

Data Path : Z:\pestpcbsrv\HPCHEM1\ECD_Q\Data\PQ091421\
 Data File : PQ054512.D
 Signal(s) : Signal #1: ECD1A.ch Signal #2: ECD2B.ch
 Acq On : 15 Sep 2021 20:54
 Operator : AJ\MA
 Sample : AR1248CCC500
 Misc :
 ALS Vial : 4 Sample Multiplier: 1

Instrument :
 ECD_Q
 ClientSampleId :
 AR1248CCC500

Integration File signal 1: autoint1.e
 Integration File signal 2: autoint2.e
 Quant Time: Sep 16 01:27:35 2021
 Quant Method : Z:\pestpcbsrv\HPCHEM1\ECD_Q\Method\PQ091421.M
 Quant Title : GC EXTRACTABLES
 QLast Update : Wed Sep 15 05:25:53 2021
 Response via : Initial Calibration
 Integrator: ChemStation

Volume Inj. : 2 µl
 Signal #1 Phase : ZB-MR1 Signal #2 Phase: ZB-MR2
 Signal #1 Info : 30Mx0.32mmx 0.50µ Signal #2 Info : 30M x 0.32mm x 0.25µm

Compound	RT#1	RT#2	Resp#1	Resp#2	ng/ml	ng/ml

System Monitoring Compounds						
1) SA Tetrachlo...	5.201	4.208	1245.3E6	698.7E6	52.145	52.851
2) SA Decachlor...	11.369	9.536	785.6E6	619.1E6	46.543	45.685
Target Compounds						
21) L5 AR-1248-1	6.525	5.467	225.7E6	133.8E6	450.963	511.469
22) L5 AR-1248-2	6.817	5.730	311.8E6	183.7E6	479.884	515.651
23) L5 AR-1248-3	7.036	5.775	346.5E6	186.1E6	484.562	523.218
24) L5 AR-1248-4	7.464	5.961	387.0E6	190.8E6	489.202	444.268
25) L5 AR-1248-5	7.505	6.383	390.5E6	235.9E6	486.663	550.605

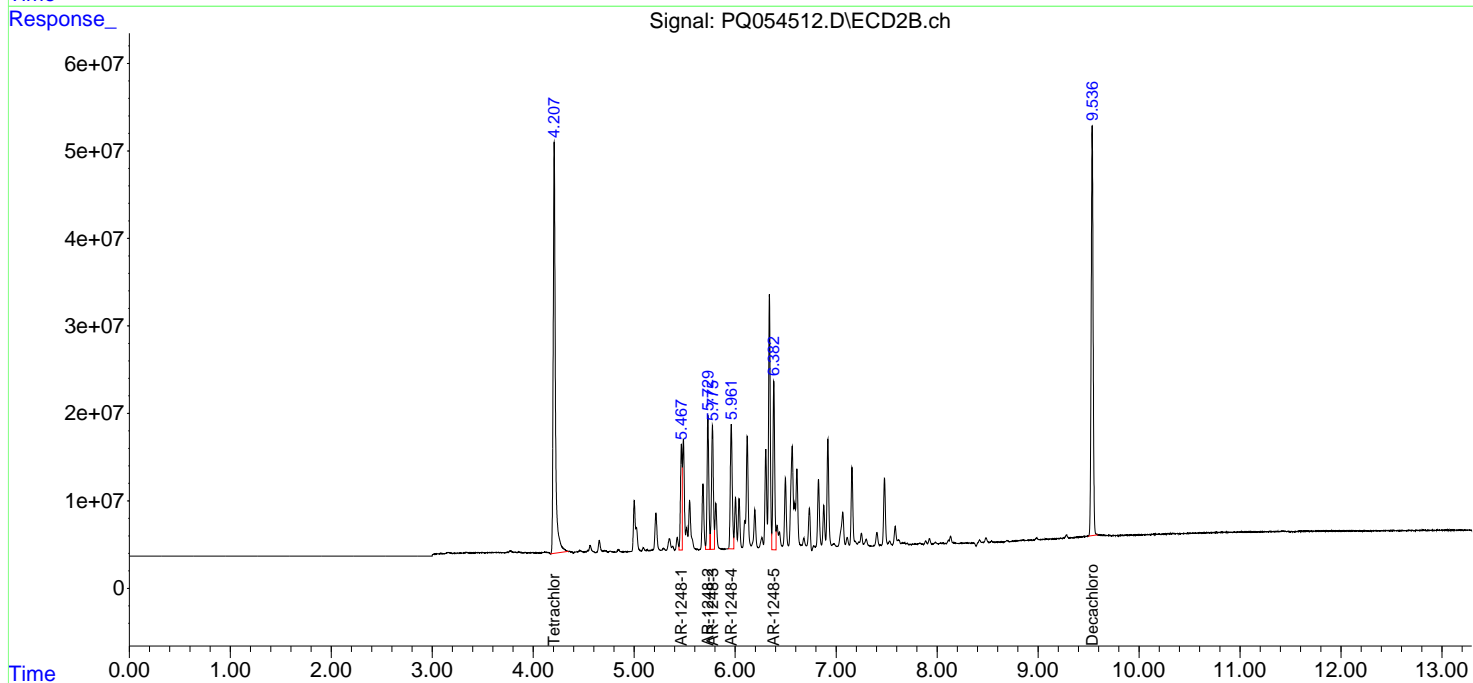
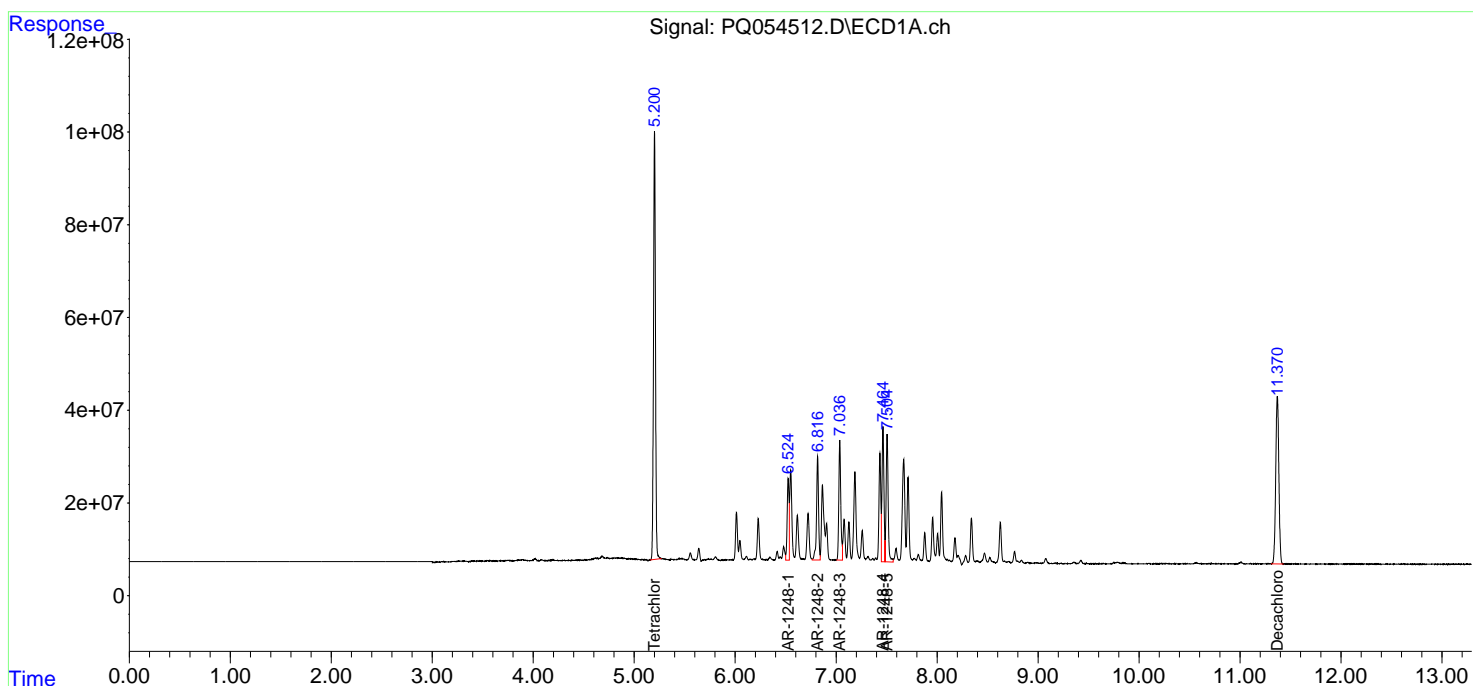
(f)=RT Delta > 1/2 Window (#)=Amounts differ by > 25% (m)=manual int.

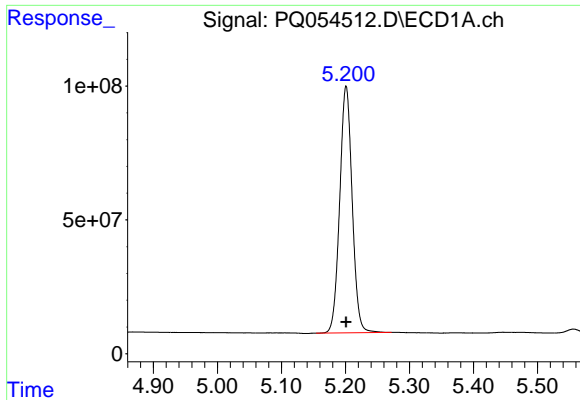
Data Path : Z:\pestpcbsrv\HPCHEM1\ECD_Q\Data\PQ091421\
 Data File : PQ054512.D
 Signal(s) : Signal #1: ECD1A.ch Signal #2: ECD2B.ch
 Acq On : 15 Sep 2021 20:54
 Operator : AJ\MA
 Sample : AR1248CCC500
 Misc :
 ALS Vial : 4 Sample Multiplier: 1

Instrument :
 ECD_Q
 ClientSampled :
 AR1248CCC500

Integration File signal 1: autoint1.e
 Integration File signal 2: autoint2.e
 Quant Time: Sep 16 01:27:35 2021
 Quant Method : Z:\pestpcbsrv\HPCHEM1\ECD_Q\Method\PQ091421.M
 Quant Title : GC EXTRACTABLES
 QLast Update : Wed Sep 15 05:25:53 2021
 Response via : Initial Calibration
 Integrator: ChemStation

Volume Inj. : 2 µl
 Signal #1 Phase : ZB-MR1 Signal #2 Phase: ZB-MR2
 Signal #1 Info : 30Mx0.32mmx 0.50µm Signal #2 Info : 30M x 0.32mm x 0.25µm

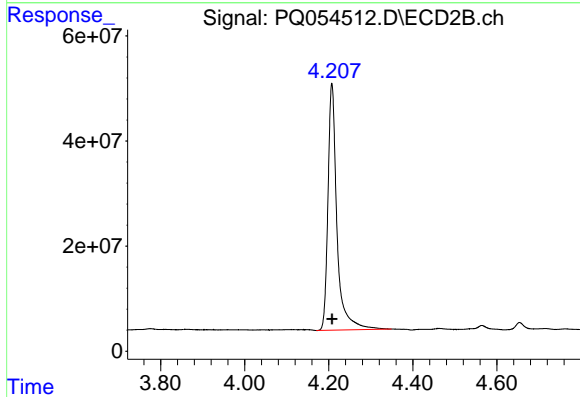




#1 Tetrachloro-m-xylene

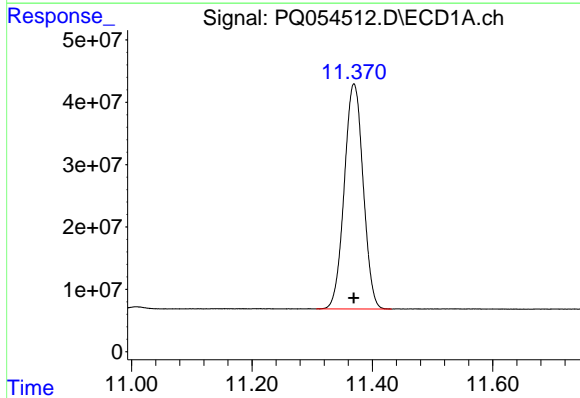
R.T.: 5.201 min
 Delta R.T.: 0.000 min
 Response: 1245294314
 Conc: 52.14 ng/ml

Instrument :
 ECD_Q
 ClientSampleId :
 AR1248CCC500



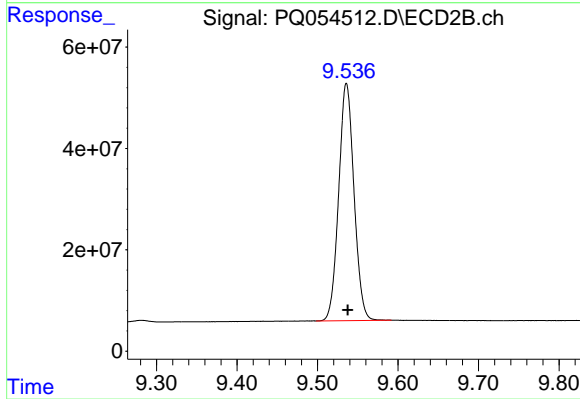
#1 Tetrachloro-m-xylene

R.T.: 4.208 min
 Delta R.T.: 0.000 min
 Response: 698672906
 Conc: 52.85 ng/ml



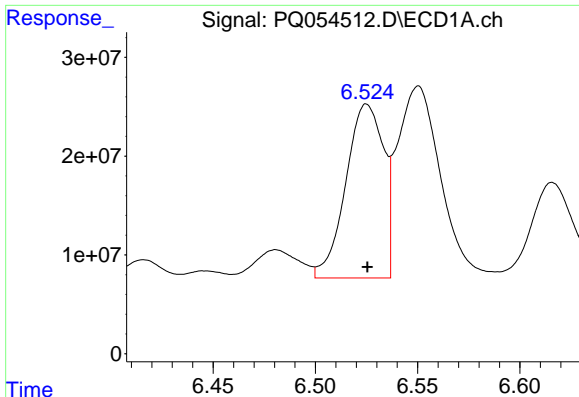
#2 Decachlorobiphenyl

R.T.: 11.369 min
 Delta R.T.: 0.000 min
 Response: 785561252
 Conc: 46.54 ng/ml



#2 Decachlorobiphenyl

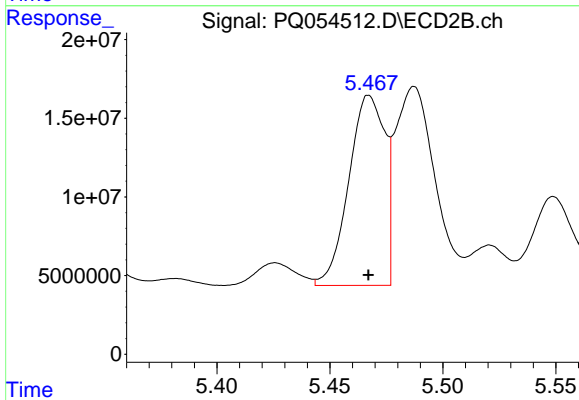
R.T.: 9.536 min
 Delta R.T.: -0.002 min
 Response: 619127894
 Conc: 45.69 ng/ml



#21 AR-1248-1

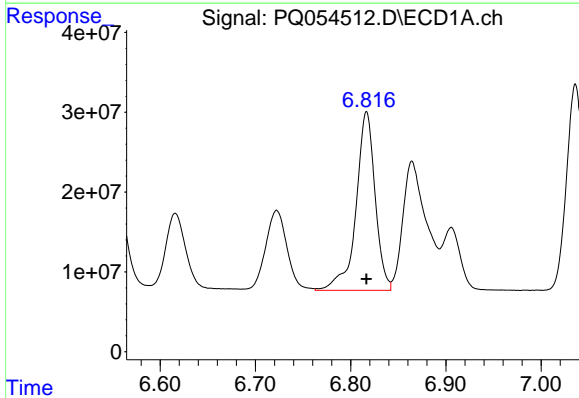
R.T.: 6.525 min
Delta R.T.: 0.000 min
Response: 225707809
Conc: 450.96 ng/ml

Instrument :
ECD_Q
ClientSampleId :
AR1248CCC500



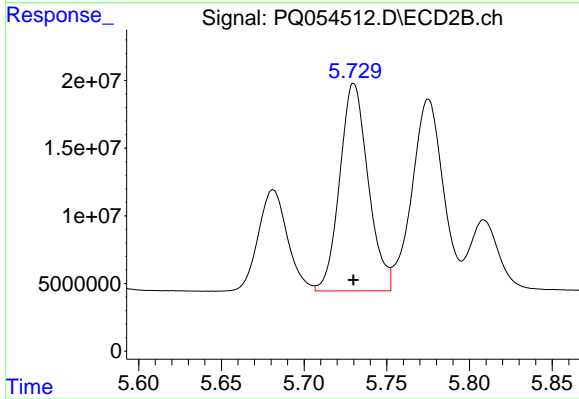
#21 AR-1248-1

R.T.: 5.467 min
Delta R.T.: 0.000 min
Response: 133822235
Conc: 511.47 ng/ml



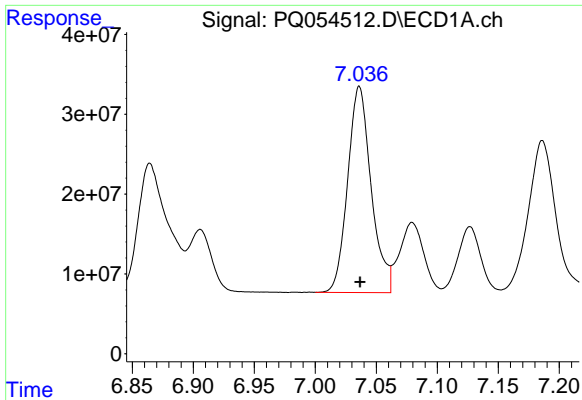
#22 AR-1248-2

R.T.: 6.817 min
Delta R.T.: 0.000 min
Response: 311775907
Conc: 479.88 ng/ml



#22 AR-1248-2

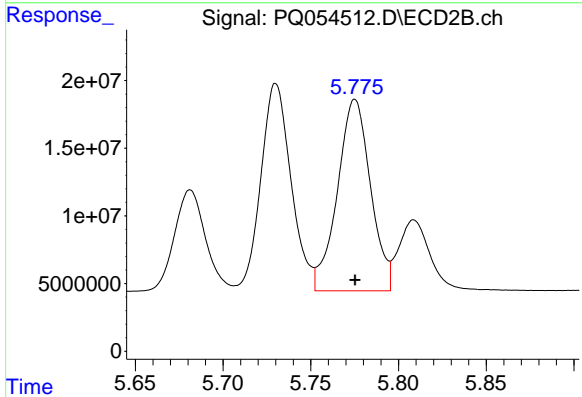
R.T.: 5.730 min
Delta R.T.: 0.000 min
Response: 183662808
Conc: 515.65 ng/ml



#23 AR-1248-3

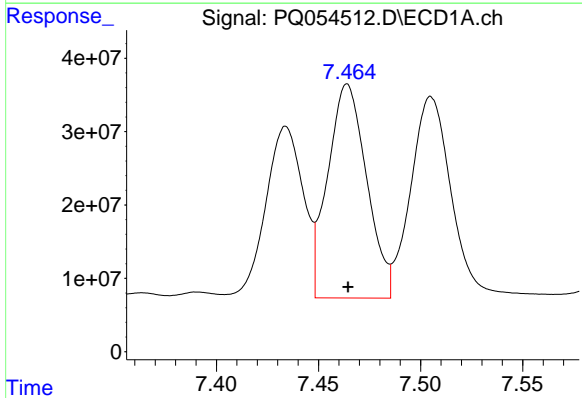
R.T.: 7.036 min
 Delta R.T.: 0.000 min
 Response: 346525433
 Conc: 484.56 ng/ml

Instrument :
 ECD_Q
ClientSampleId :
 AR1248CCC500



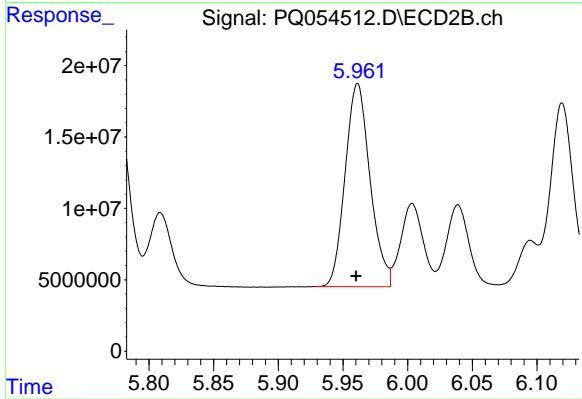
#23 AR-1248-3

R.T.: 5.775 min
 Delta R.T.: 0.000 min
 Response: 186059168
 Conc: 523.22 ng/ml



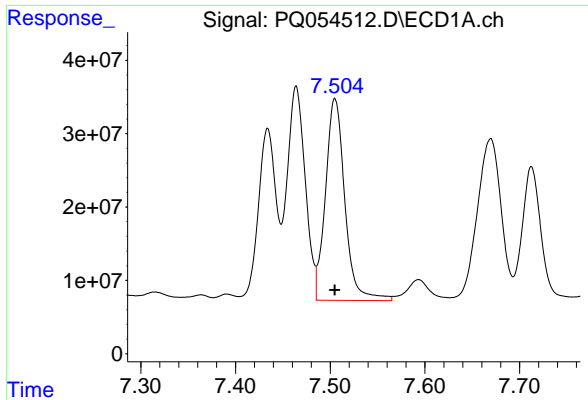
#24 AR-1248-4

R.T.: 7.464 min
 Delta R.T.: 0.000 min
 Response: 387008109
 Conc: 489.20 ng/ml



#24 AR-1248-4

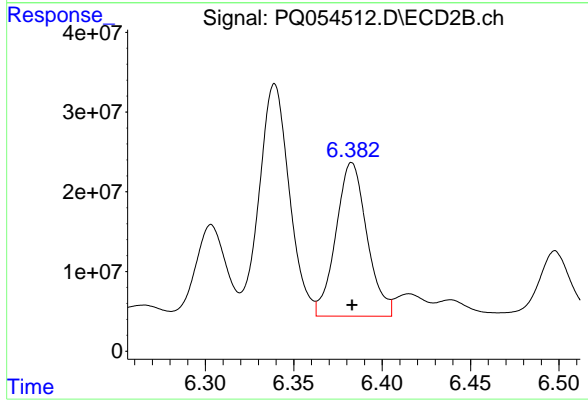
R.T.: 5.961 min
 Delta R.T.: 0.001 min
 Response: 190839432
 Conc: 444.27 ng/ml



#25 AR-1248-5

R.T.: 7.505 min
Delta R.T.: 0.000 min
Response: 390528841
Conc: 486.66 ng/ml

Instrument :
ECD_Q
ClientSampled :
AR1248CCC500



#25 AR-1248-5

R.T.: 6.383 min
Delta R.T.: 0.000 min
Response: 235892495
Conc: 550.60 ng/ml