

Data Path : Z:\pestpcbsrv\HPCHEM1\ECD_Q\Data\PQ091619\
 Data File : PQ043595.D
 Signal(s) : Signal #1: ECD1A.ch Signal #2: ECD2B.ch
 Acq On : 16 Sep 2019 18:37
 Operator : SM\AJ
 Sample : K3591-09
 Misc : AR1660 MDL 25 PPB
 ALS Vial : 5 Sample Multiplier: 1

Instrument :
 ECD_Q
Client Sampled :
 MDL-MDL-WATER-03-QT3-2019

Manual Integrations
APPROVED
 Ankita
 9/18/2019 3:28:14 PM

Integration File signal 1: autoint1.e
 Integration File signal 2: autoint2.e
 Quant Time: Sep 17 04:48:48 2019
 Quant Method : Z:\pestpcbsrv\HPCHEM1\ECD_Q\Method\PQ091219.M
 Quant Title : GC EXTRACTABLES
 QLast Update : Fri Sep 13 03:48:31 2019
 Response via : Initial Calibration
 Integrator: ChemStation

Volume Inj. : 2 µl
 Signal #1 Phase : ZB-MR1 Signal #2 Phase: ZB-MR2
 Signal #1 Info : 30Mx0.32mmx 0.50µ Signal #2 Info : 30M x 0.32mm x 0.25µm

Compound	RT#1	RT#2	Resp#1	Resp#2	ng/ml	ng/ml

System Monitoring Compounds						
1) SA Tetrachlo...	5.702	4.787	28540690	12521113	11.268	12.169
2) SA Decachlor...	12.095	10.561	128.9E6	49750742	15.564	13.228
Target Compounds						
3) L1 AR-1016-1	7.145	6.243	2013987	716535	19.502	15.869
4) L1 AR-1016-2	7.168	6.263	3378818	1061836	23.038	18.119
5) L1 AR-1016-3	7.240	6.474	2342171	431630	25.522	13.502m#
6) L1 AR-1016-4	7.354	6.530	2290792	893724	31.125	32.828m
7) L1 AR-1016-5	7.688	6.788	2316851	835711	29.971	23.671m
31) L7 AR-1260-1	8.936	7.951	4901056	1547111	26.439	18.980m#
32) L7 AR-1260-2	9.179	8.154	4606285	2666820	19.544m	25.134m#
33) L7 AR-1260-3	9.554	8.320	4733638	2091319	24.814	21.830m
34) L7 AR-1260-4	9.795	8.820	4383967	1450641	18.988m	16.579m
35) L7 AR-1260-5	10.143	9.069	11803816	3779894	22.317	17.244m

(f)=RT Delta > 1/2 Window (#)=Amounts differ by > 25% (m)=manual int.

Data Path : Z:\pestpcbsrv\HPCHEM1\ECD_Q\Data\PQ091619\
 Data File : PQ043595.D
 Signal(s) : Signal #1: ECD1A.ch Signal #2: ECD2B.ch
 Acq On : 16 Sep 2019 18:37
 Operator : SM\AJ
 Sample : K3591-09
 Misc : AR1660 MDL 25 PPB
 ALS Vial : 5 Sample Multiplier: 1

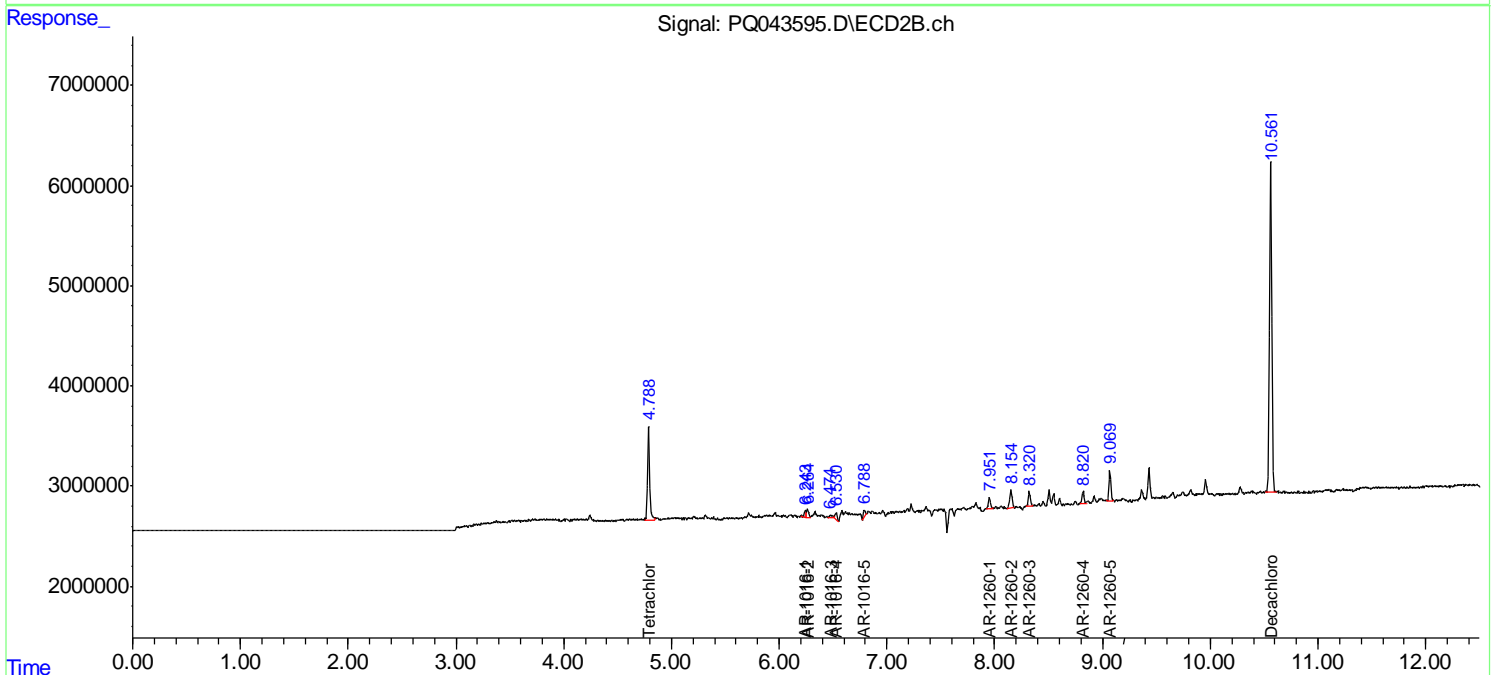
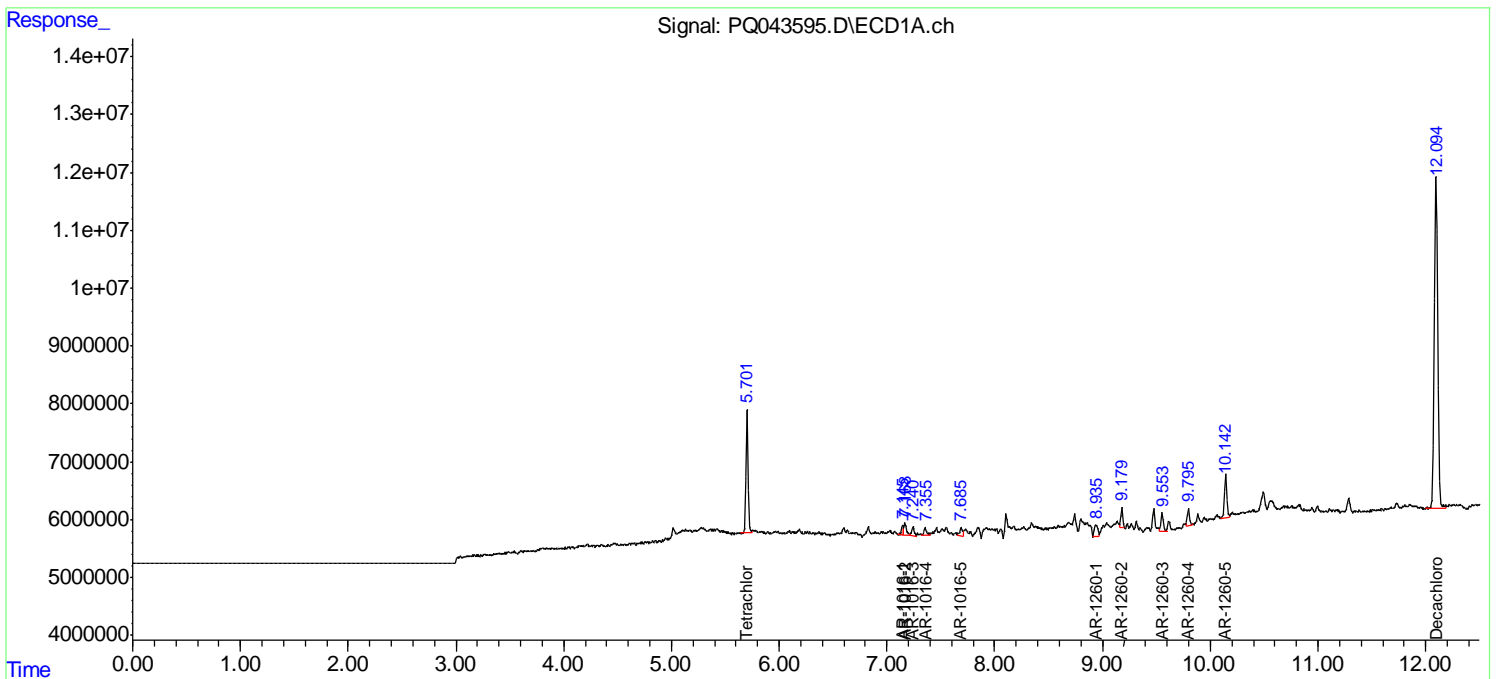
Instrument :
 ECD_Q
Client Sampled :
 MDL-MDL-WATER-03-QT3-2019

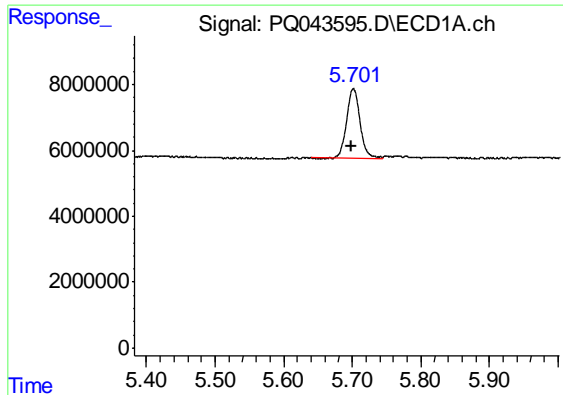
Manual Integrations
APPROVED

Ankita
 9/18/2019 3:28:14 PM

Integration File signal 1: autoint1.e
 Integration File signal 2: autoint2.e
 Quant Time: Sep 17 04:48:48 2019
 Quant Method : Z:\pestpcbsrv\HPCHEM1\ECD_Q\Method\PQ091219.M
 Quant Title : GC EXTRACTABLES
 QLast Update : Fri Sep 13 03:48:31 2019
 Response via : Initial Calibration
 Integrator: ChemStation

Volume Inj. : 2 µl
 Signal #1 Phase : ZB-MR1 Signal #2 Phase: ZB-MR2
 Signal #1 Info : 30Mx0.32mmx 0.50µ Signal #2 Info : 30M x 0.32mm x 0.25µm





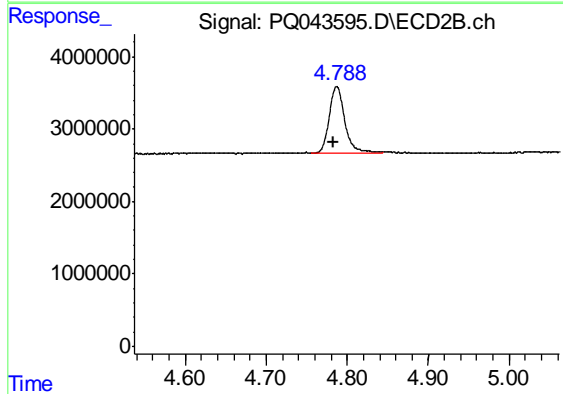
#1 Tetrachloro-m-xylene

R.T.: 5.702 min
 Delta R.T.: 0.004 min
 Response: 28540690
 Conc: 11.27 ng/ml

Instrument :
 ECD_Q
 ClientSampleId :
 MDL-MDL-WATER-03-QT3-2019

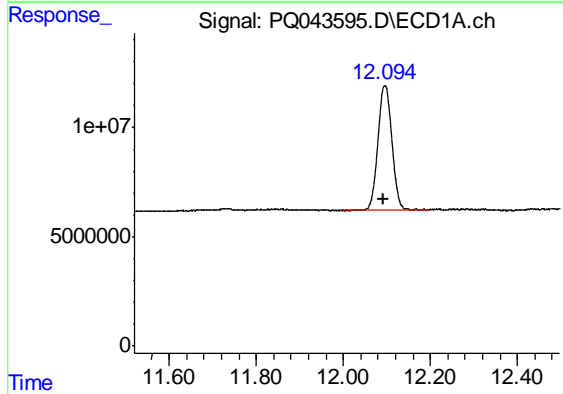
Manual Integrations
 APPROVED

Ankita
 9/18/2019 3:28:14 PM



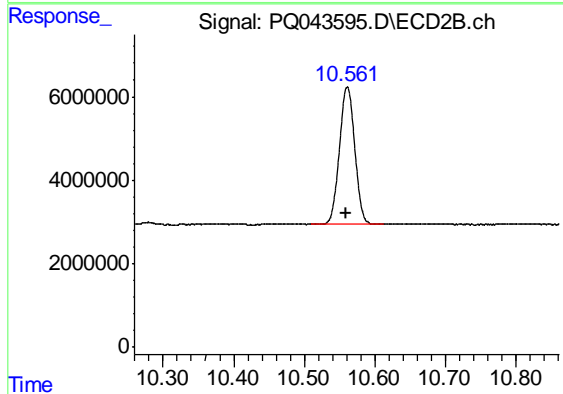
#1 Tetrachloro-m-xylene

R.T.: 4.787 min
 Delta R.T.: 0.003 min
 Response: 12521113
 Conc: 12.17 ng/ml



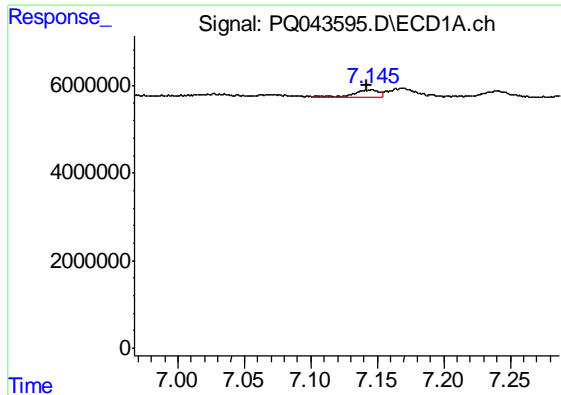
#2 Decachlorobiphenyl

R.T.: 12.095 min
 Delta R.T.: 0.003 min
 Response: 128862452
 Conc: 15.56 ng/ml



#2 Decachlorobiphenyl

R.T.: 10.561 min
 Delta R.T.: 0.001 min
 Response: 49750742
 Conc: 13.23 ng/ml



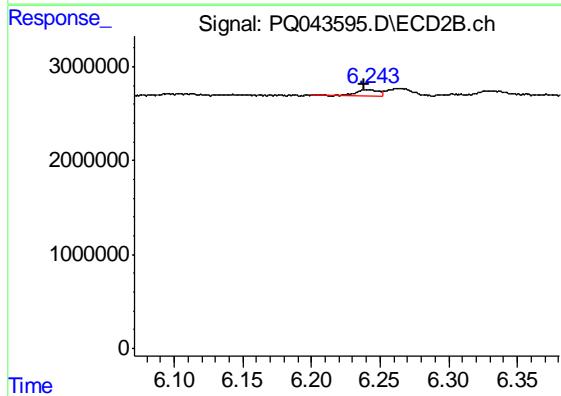
#3 AR-1016-1

R.T.: 7.145 min
 Delta R.T.: 0.003 min
 Response: 2013987
 Conc: 19.50 ng/ml

Instrument :
 ECD_Q
 ClientSampleId :
 MDL-MDL-WATER-03-QT3-2019

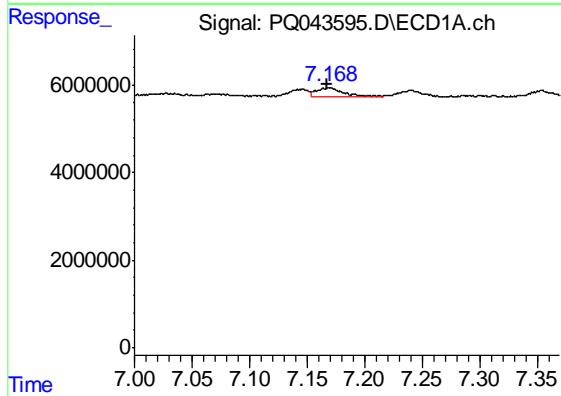
Manual Integrations
 APPROVED

Ankita
 9/18/2019 3:28:14 PM



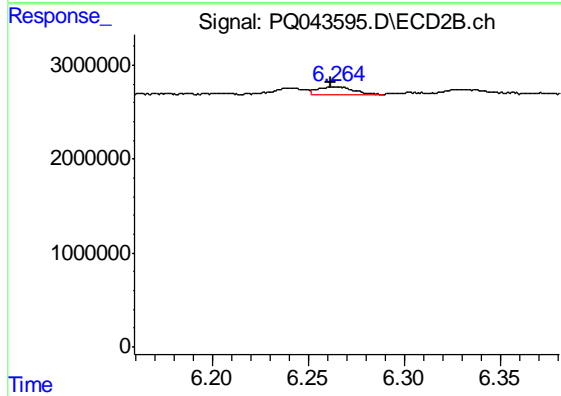
#3 AR-1016-1

R.T.: 6.243 min
 Delta R.T.: 0.004 min
 Response: 716535
 Conc: 15.87 ng/ml



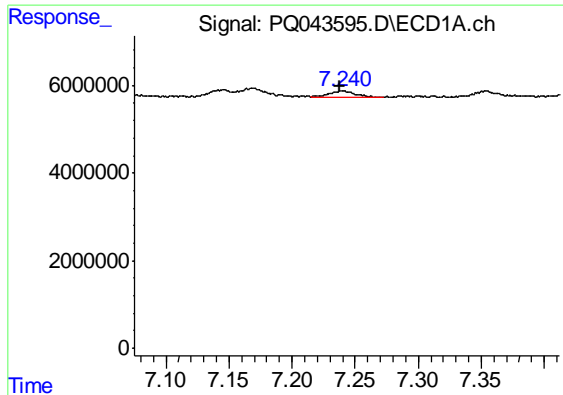
#4 AR-1016-2

R.T.: 7.168 min
 Delta R.T.: 0.000 min
 Response: 3378818
 Conc: 23.04 ng/ml



#4 AR-1016-2

R.T.: 6.263 min
 Delta R.T.: 0.001 min
 Response: 1061836
 Conc: 18.12 ng/ml



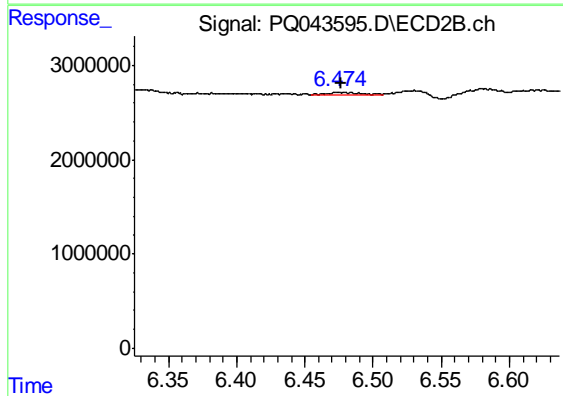
#5 AR-1016-3

R.T.: 7.240 min
 Delta R.T.: 0.002 min
 Response: 2342171
 Conc: 25.52 ng/ml

Instrument :
 ECD_Q
 ClientSampleId :
 MDL-MDL-WATER-03-QT3-2019

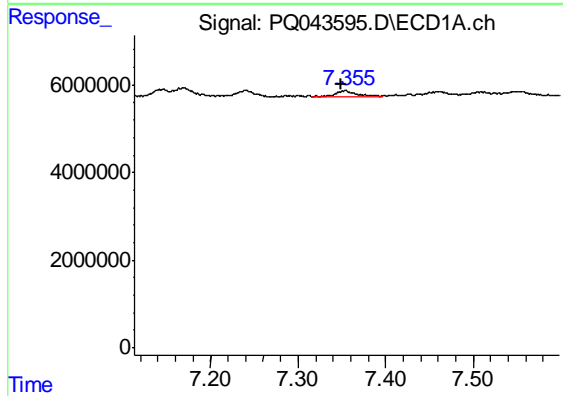
Manual Integrations
 APPROVED

Ankita
 9/18/2019 3:28:14 PM



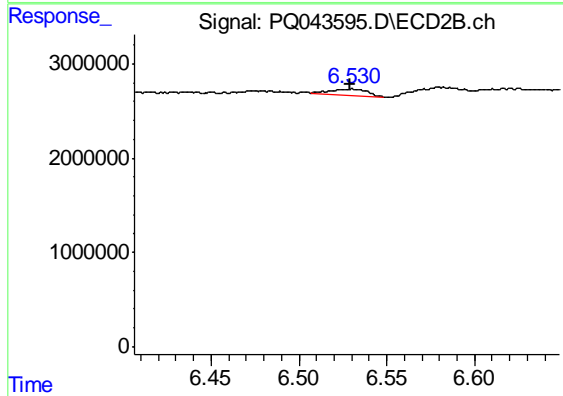
#5 AR-1016-3

R.T.: 6.474 min
 Delta R.T.: -0.003 min
 Response: 431630
 Conc: 13.50 ng/ml m



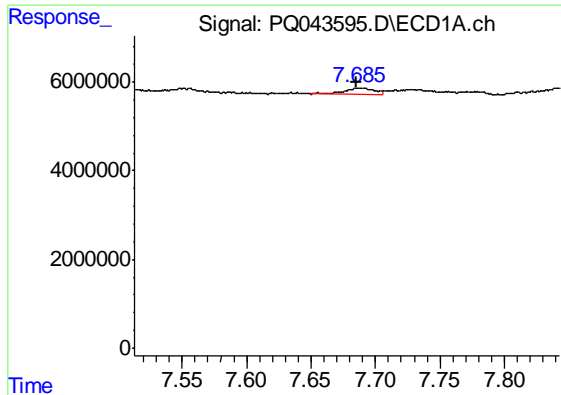
#6 AR-1016-4

R.T.: 7.354 min
 Delta R.T.: 0.004 min
 Response: 2290792
 Conc: 31.13 ng/ml



#6 AR-1016-4

R.T.: 6.530 min
 Delta R.T.: 0.000 min
 Response: 893724
 Conc: 32.83 ng/ml m



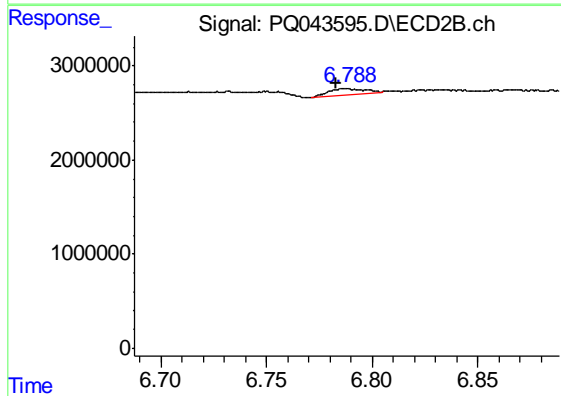
#7 AR-1016-5

R.T.: 7.688 min
 Delta R.T.: 0.003 min
 Response: 2316851
 Conc: 29.97 ng/ml

Instrument :
 ECD_Q
 ClientSampleId :
 MDL-MDL-WATER-03-QT3-2019

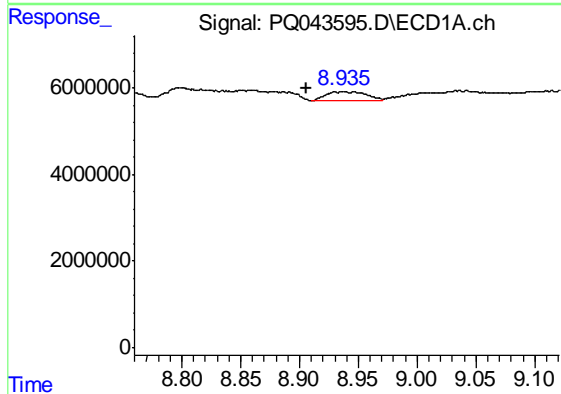
Manual Integrations
 APPROVED

Ankita
 9/18/2019 3:28:14 PM



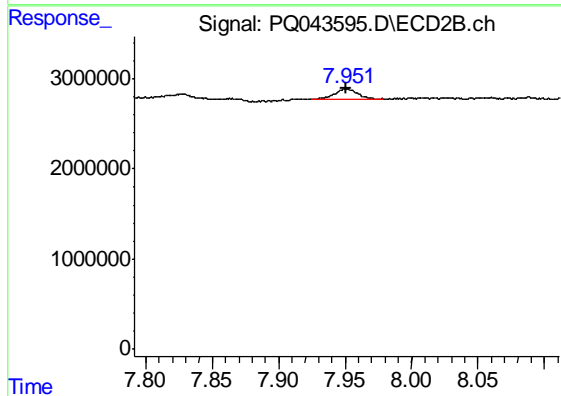
#7 AR-1016-5

R.T.: 6.788 min
 Delta R.T.: 0.005 min
 Response: 835711
 Conc: 23.67 ng/ml m



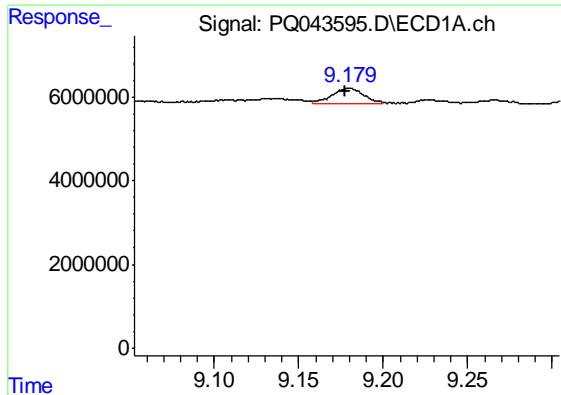
#31 AR-1260-1

R.T.: 8.936 min
 Delta R.T.: 0.029 min
 Response: 4901056
 Conc: 26.44 ng/ml



#31 AR-1260-1

R.T.: 7.951 min
 Delta R.T.: 0.000 min
 Response: 1547111
 Conc: 18.98 ng/ml m



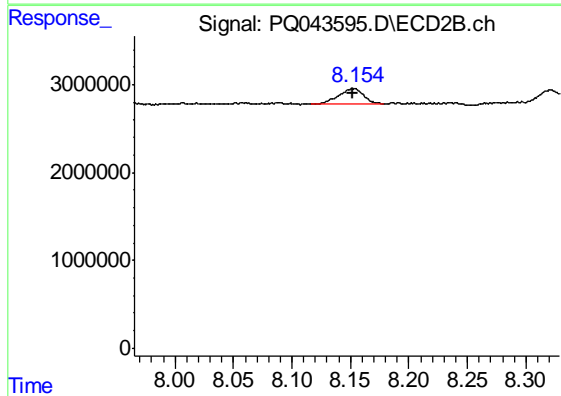
#32 AR-1260-2

R.T.: 9.179 min
 Delta R.T.: 0.001 min
 Response: 4606285
 Conc: 19.54 ng/ml m

Instrument :
 ECD_Q
 ClientSampleId :
 MDL-MDL-WATER-03-QT3-2019

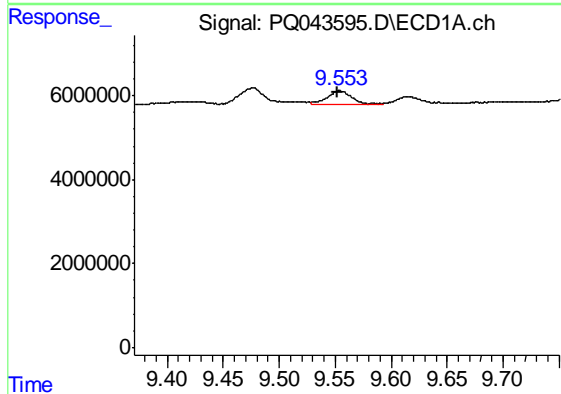
Manual Integrations
 APPROVED

Ankita
 9/18/2019 3:28:14 PM



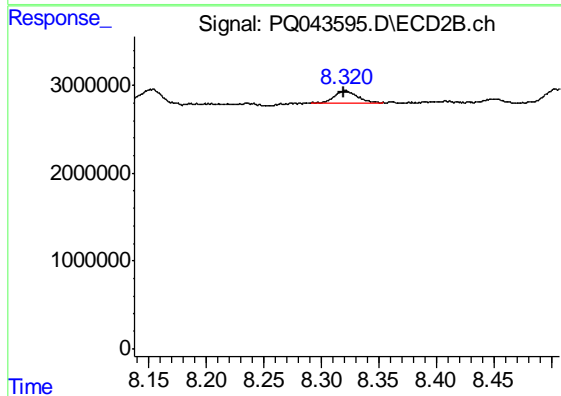
#32 AR-1260-2

R.T.: 8.154 min
 Delta R.T.: 0.002 min
 Response: 2666820
 Conc: 25.13 ng/ml m



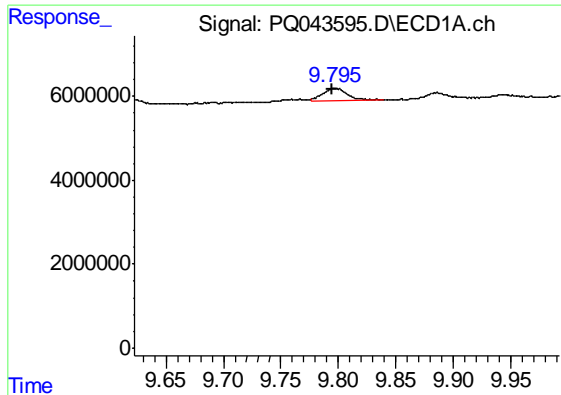
#33 AR-1260-3

R.T.: 9.554 min
 Delta R.T.: 0.002 min
 Response: 4733638
 Conc: 24.81 ng/ml



#33 AR-1260-3

R.T.: 8.320 min
 Delta R.T.: 0.000 min
 Response: 2091319
 Conc: 21.83 ng/ml m



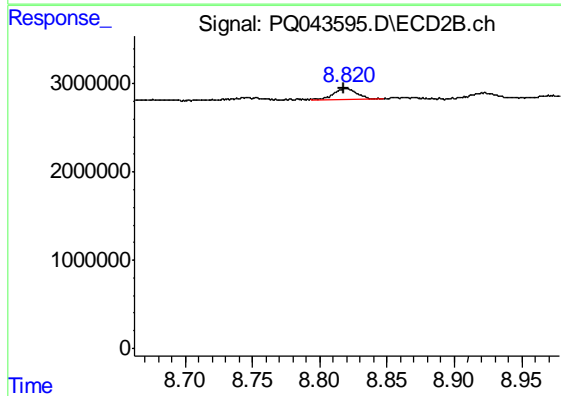
#34 AR-1260-4

R.T.: 9.795 min
 Delta R.T.: 0.000 min
 Response: 4383967
 Conc: 18.99 ng/ml m

Instrument :
 ECD_Q
 ClientSampled :
 MDL-MDL-WATER-03-QT3-2019

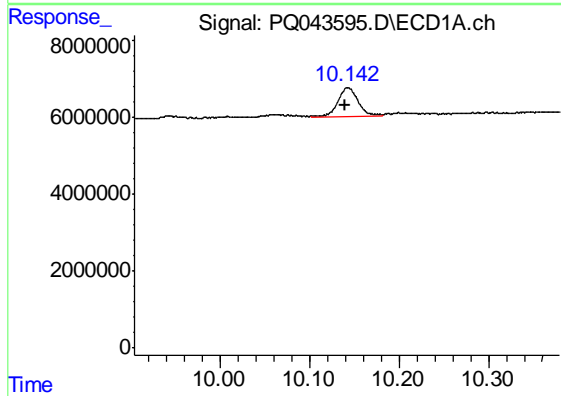
Manual Integrations
 APPROVED

Ankita
 9/18/2019 3:28:14 PM



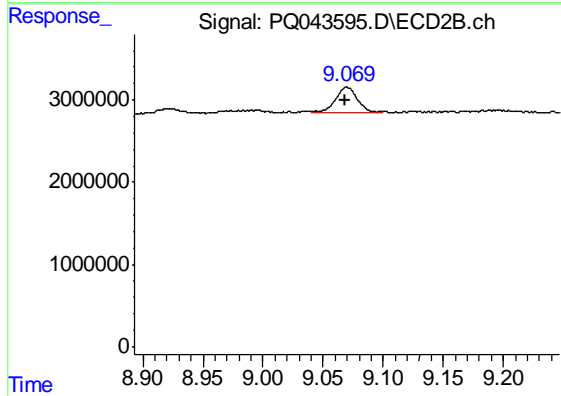
#34 AR-1260-4

R.T.: 8.820 min
 Delta R.T.: 0.002 min
 Response: 1450641
 Conc: 16.58 ng/ml m



#35 AR-1260-5

R.T.: 10.143 min
 Delta R.T.: 0.004 min
 Response: 11803816
 Conc: 22.32 ng/ml



#35 AR-1260-5

R.T.: 9.069 min
 Delta R.T.: 0.000 min
 Response: 3779894
 Conc: 17.24 ng/ml m