

Data Path : Z:\pestpcbsrv\HPCHEM1\ECD\_Q\Data\PQ091621\  
 Data File : PQ054518.D  
 Signal(s) : Signal #1: ECD1A.ch Signal #2: ECD2B.ch  
 Acq On : 16 Sep 2021 11:12  
 Operator : AJ\MA  
 Sample : I.BLK  
 Misc :  
 ALS Vial : 2 Sample Multiplier: 1

Instrument :  
 ECD\_Q  
 ClientSampled :

Integration File signal 1: autoint1.e  
 Integration File signal 2: autoint2.e  
 Quant Time: Sep 16 15:28:43 2021  
 Quant Method : Z:\pestpcbsrv\HPCHEM1\ECD\_Q\Method\PQ091421.M  
 Quant Title : GC EXTRACTABLES  
 QLast Update : Wed Sep 15 05:25:53 2021  
 Response via : Initial Calibration  
 Integrator: ChemStation

Volume Inj. : 2 µl  
 Signal #1 Phase : ZB-MR2 Signal #2 Phase: ZB-MR2  
 Signal #1 Info : 30Mx0.32mmx 0.50µ Signal #2 Info : 30M x 0.32mm x 0.25µm

Compound	RT#1	RT#2	Resp#1	Resp#2	ng/ml	ng/ml
-----						
System Monitoring Compounds						
1) SA Tetrachlo...	5.202	4.208	564.9E6	295.0E6	23.653	22.316
2) SA Decachlor...	11.369	9.537	385.9E6	292.5E6	22.861	21.581
Target Compounds						
6) L1 AR-1016-4	0.000	5.749f	0	3611544	N.D.	13.003 #
8) L2 AR-1221-1	5.480f	0.000	3893528	0	15.114	N.D. #
9) L2 AR-1221-2	5.558	0.000	10751103	0	56.243	N.D. #
14) L3 AR-1232-4	0.000	5.749f	0	3611544	N.D.	28.590 #
19) L4 AR-1242-4	0.000	5.749f	0	3611544	N.D.	14.270 #
20) L4 AR-1242-5	7.506	0.000	7807686	0	16.675	N.D. #
22) L5 AR-1248-2	0.000	5.749f	0	3611544	N.D.	10.140 #
23) L5 AR-1248-3	0.000	5.749f	0	3611544	N.D.	10.156 #
24) L5 AR-1248-4	7.445f	0.000	106.6E6	0	134.766	N.D. #
25) L5 AR-1248-5	7.506	0.000	7807686	0	9.730	N.D. #
26) L6 AR-1254-1	7.445	0.000	106.6E6	0	122.391	N.D. #
28) L6 AR-1254-3	8.075f	6.936f	66205762	78419107	47.536	71.134 #
29) L6 AR-1254-4	8.327	7.158	41326383	42478149	38.793	56.179 #
30) L6 AR-1254-5	8.752f	0.000	5489290	0	4.776	N.D. #
31) L7 AR-1260-1	0.000	7.058	0	91629648	N.D.	122.014 #
32) L7 AR-1260-2	8.486	7.225f	56263012	95836148	47.814	92.604 #
33) L7 AR-1260-3	0.000	7.397	0	7562754	N.D.	8.554 #
43) L9 AR-1268-3	0.000	8.690	0	19673071	N.D.	9.762 #

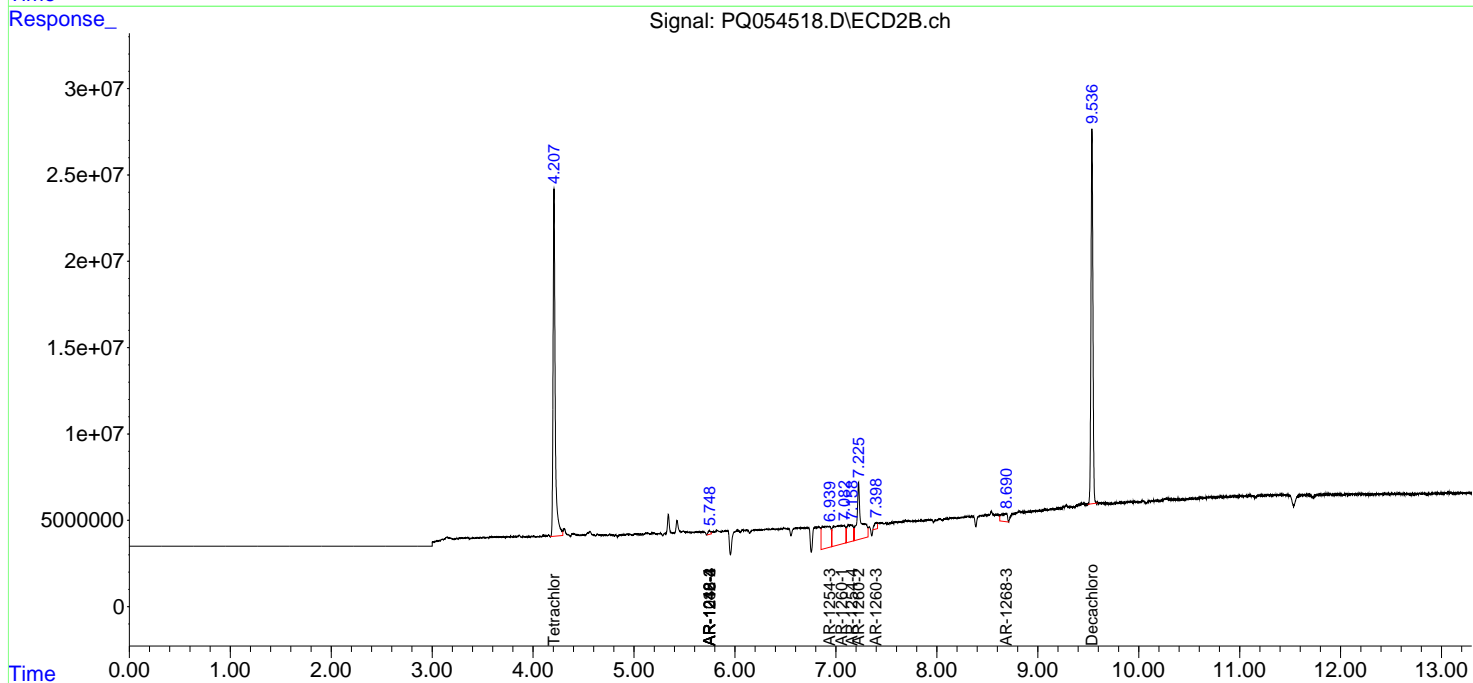
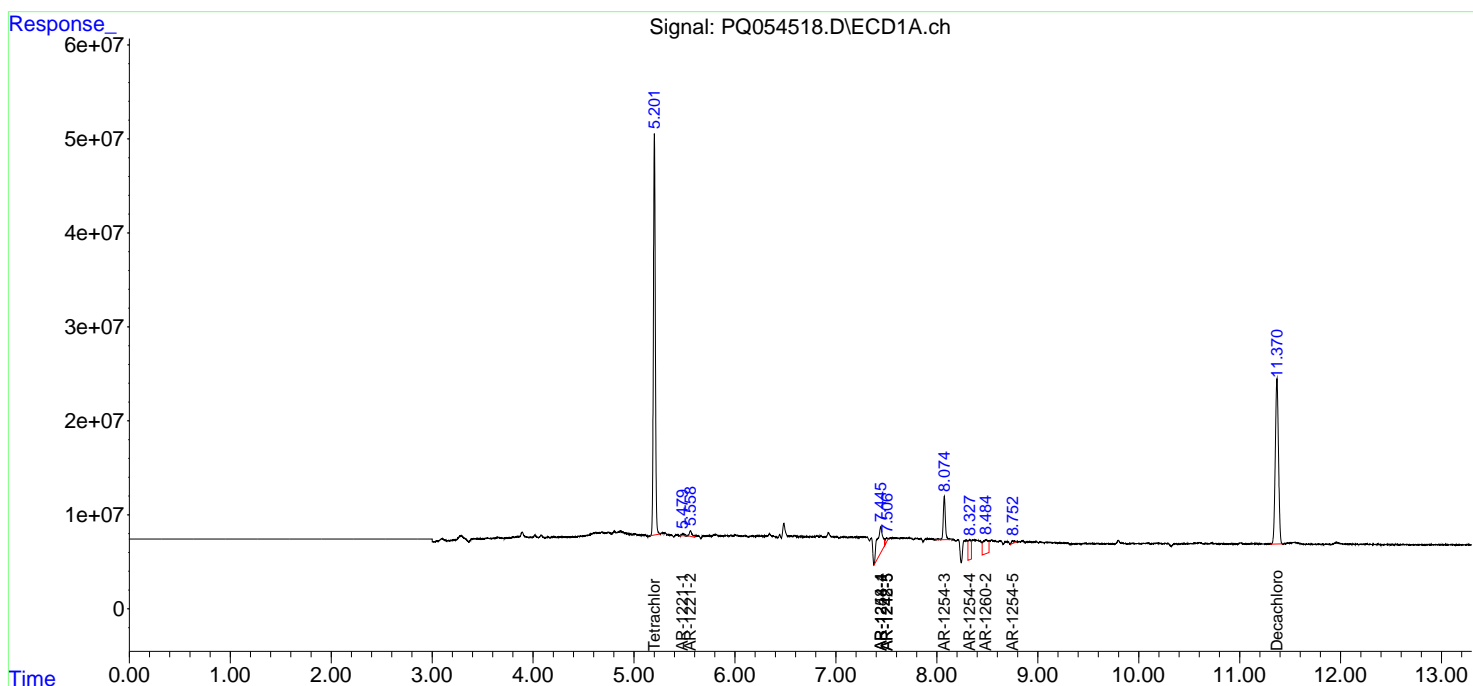
(f)=RT Delta > 1/2 Window (#)=Amounts differ by > 25% (m)=manual int.

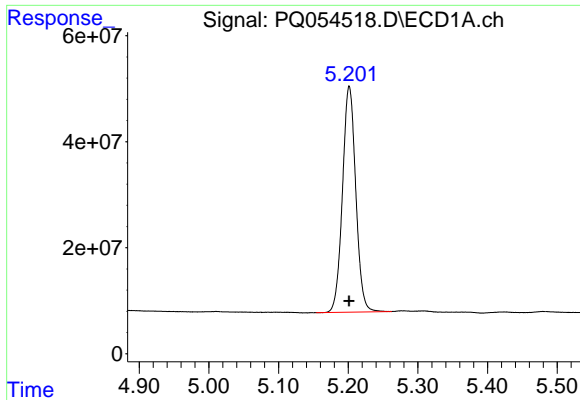
Data Path : Z:\pestpcbsrv\HPCHEM1\ECD\_Q\Data\PQ091621\  
 Data File : PQ054518.D  
 Signal(s) : Signal #1: ECD1A.ch Signal #2: ECD2B.ch  
 Acq On : 16 Sep 2021 11:12  
 Operator : AJ\MA  
 Sample : I.BLK  
 Misc :  
 ALS Vial : 2 Sample Multiplier: 1

Instrument :  
 ECD\_Q  
 ClientSampled :

Integration File signal 1: autoint1.e  
 Integration File signal 2: autoint2.e  
 Quant Time: Sep 16 15:28:43 2021  
 Quant Method : Z:\pestpcbsrv\HPCHEM1\ECD\_Q\Method\PQ091421.M  
 Quant Title : GC EXTRACTABLES  
 QLast Update : Wed Sep 15 05:25:53 2021  
 Response via : Initial Calibration  
 Integrator: ChemStation

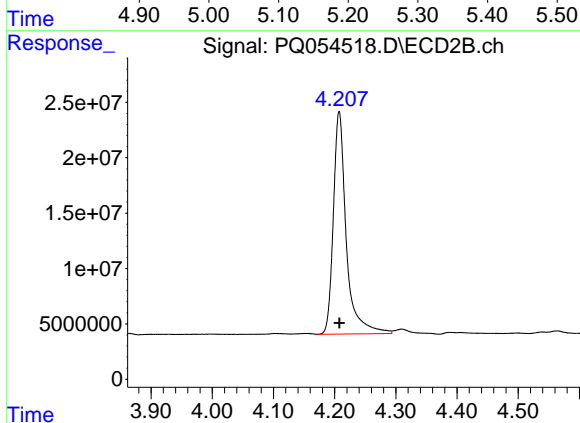
Volume Inj. : 2 µl  
 Signal #1 Phase : ZB-MR1 Signal #2 Phase: ZB-MR2  
 Signal #1 Info : 30Mx0.32mmx 0.50µ Signal #2 Info : 30M x 0.32mm x 0.25µm



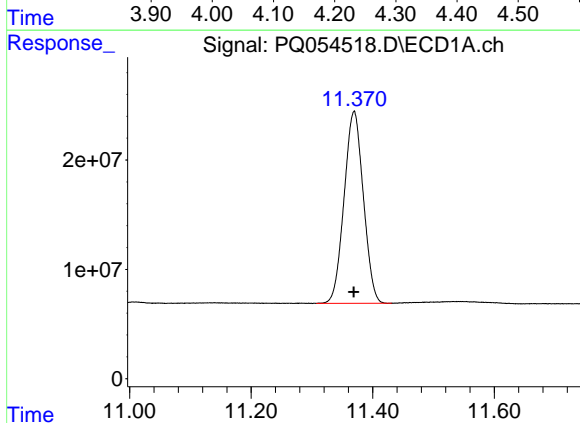


#1 Tetrachloro-m-xylene  
 R.T.: 5.202 min  
 Delta R.T.: 0.000 min  
 Response: 564864307  
 Conc: 23.65 ng/ml

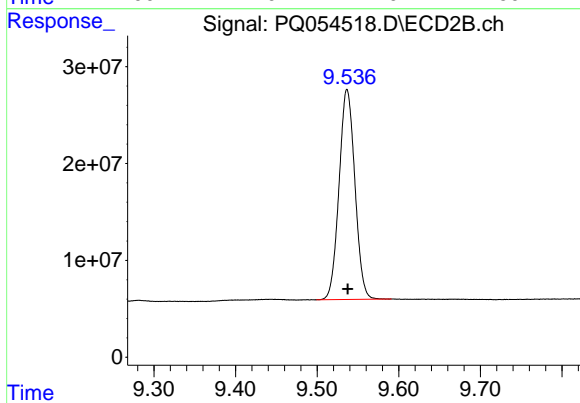
Instrument :  
 ECD\_Q  
 ClientSampleId :



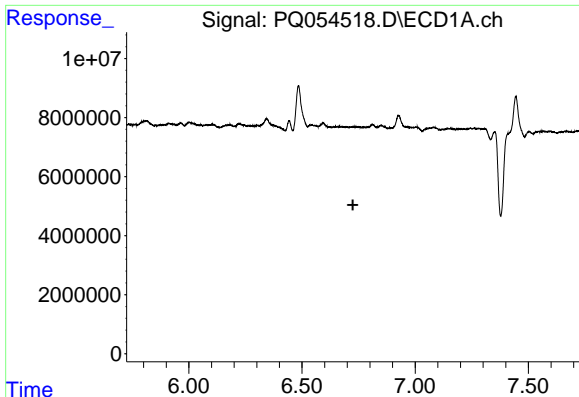
#1 Tetrachloro-m-xylene  
 R.T.: 4.208 min  
 Delta R.T.: 0.000 min  
 Response: 295011528  
 Conc: 22.32 ng/ml



#2 Decachlorobiphenyl  
 R.T.: 11.369 min  
 Delta R.T.: 0.000 min  
 Response: 385857992  
 Conc: 22.86 ng/ml



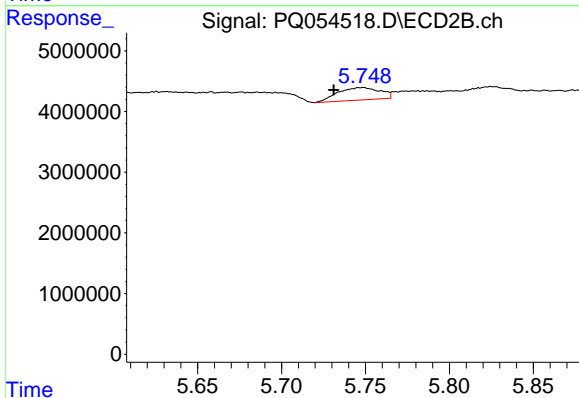
#2 Decachlorobiphenyl  
 R.T.: 9.537 min  
 Delta R.T.: 0.000 min  
 Response: 292462760  
 Conc: 21.58 ng/ml



#6 AR-1016-4

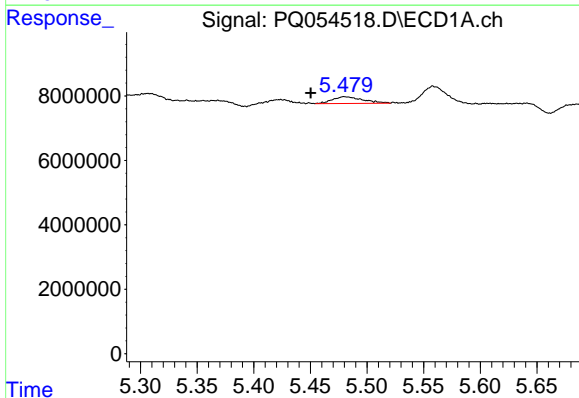
R.T.: 0.000 min  
 Exp R.T.: 6.725 min  
 Response: 0  
 Conc: N.D.

Instrument :  
 ECD\_Q  
 ClientSampled :



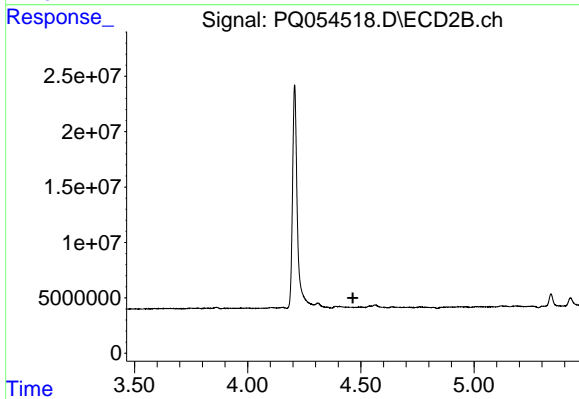
#6 AR-1016-4

R.T.: 5.749 min  
 Delta R.T.: 0.018 min  
 Response: 3611544  
 Conc: 13.00 ng/ml



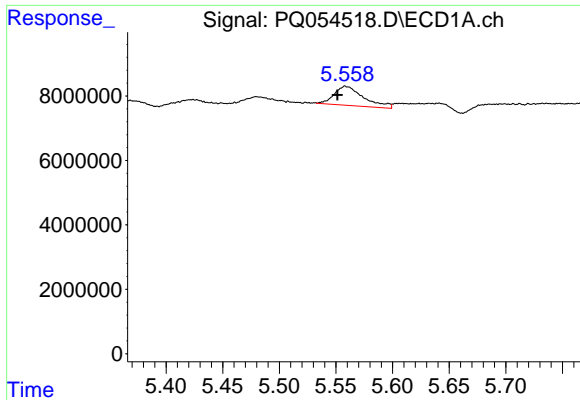
#8 AR-1221-1

R.T.: 5.480 min  
 Delta R.T.: 0.030 min  
 Response: 3893528  
 Conc: 15.11 ng/ml



#8 AR-1221-1

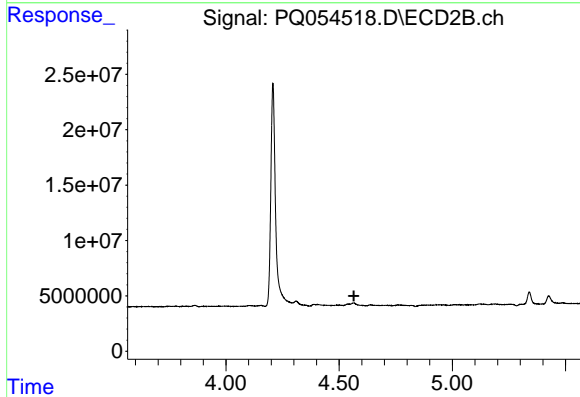
R.T.: 0.000 min  
 Exp R.T.: 4.465 min  
 Response: 0  
 Conc: N.D.



#9 AR-1221-2

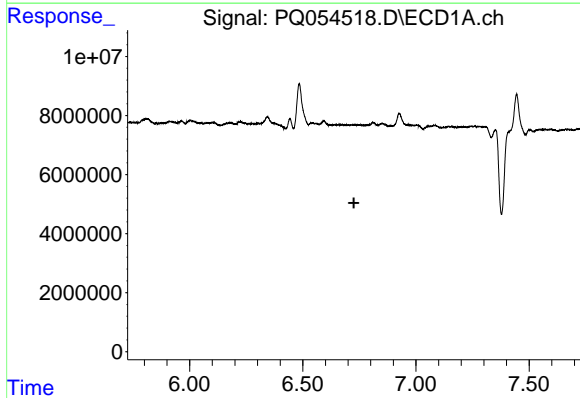
R.T.: 5.558 min  
 Delta R.T.: 0.007 min  
 Response: 10751103  
 Conc: 56.24 ng/ml

Instrument :  
 ECD\_Q  
 ClientSampled :



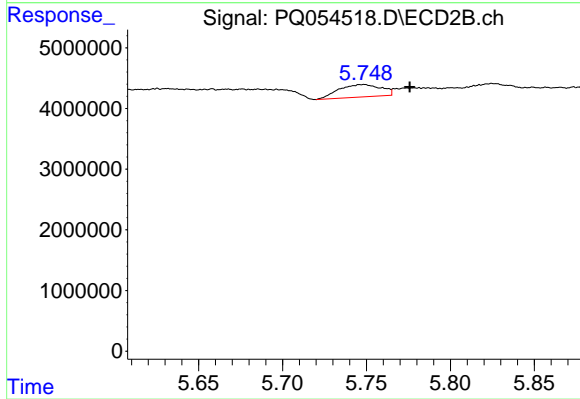
#9 AR-1221-2

R.T.: 0.000 min  
 Exp R.T. : 4.565 min  
 Response: 0  
 Conc: N.D.



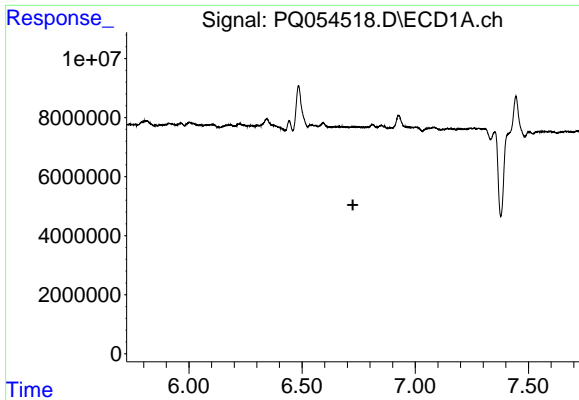
#14 AR-1232-4

R.T.: 0.000 min  
 Exp R.T. : 6.726 min  
 Response: 0  
 Conc: N.D.



#14 AR-1232-4

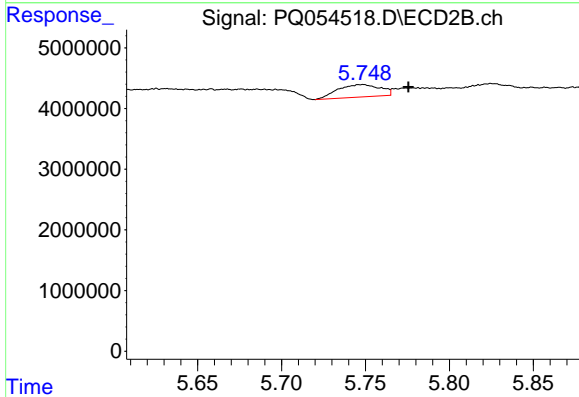
R.T.: 5.749 min  
 Delta R.T.: -0.027 min  
 Response: 3611544  
 Conc: 28.59 ng/ml



#19 AR-1242-4

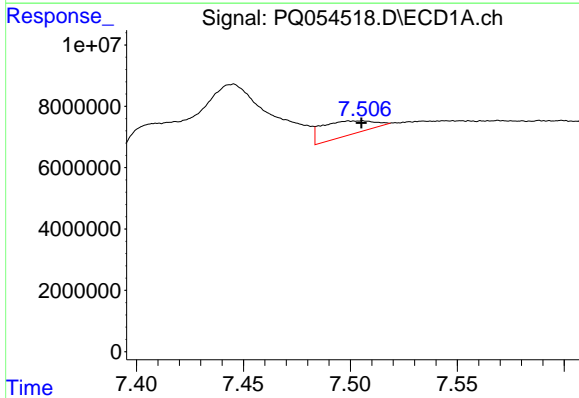
R.T.: 0.000 min  
 Exp R.T.: 6.724 min  
 Response: 0  
 Conc: N.D.

Instrument :  
 ECD\_Q  
 ClientSampleId :



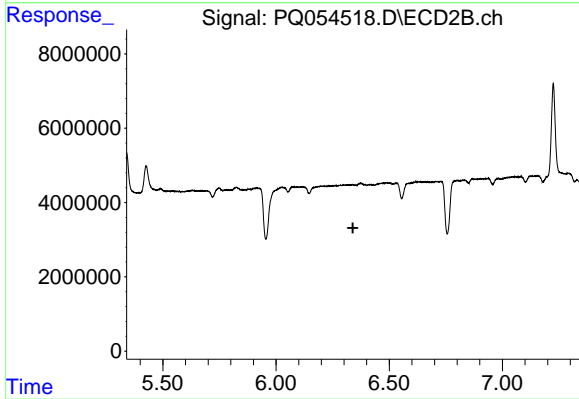
#19 AR-1242-4

R.T.: 5.749 min  
 Delta R.T.: -0.027 min  
 Response: 3611544  
 Conc: 14.27 ng/ml



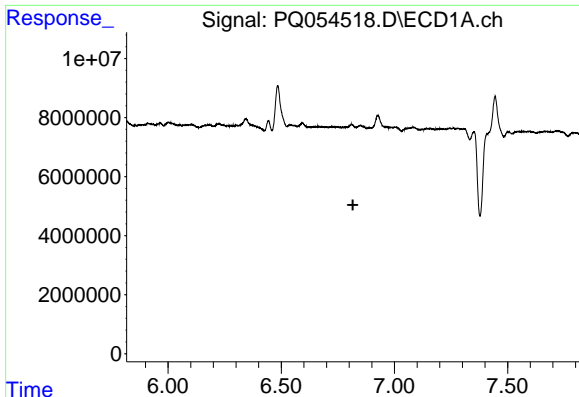
#20 AR-1242-5

R.T.: 7.506 min  
 Delta R.T.: 0.000 min  
 Response: 7807686  
 Conc: 16.67 ng/ml



#20 AR-1242-5

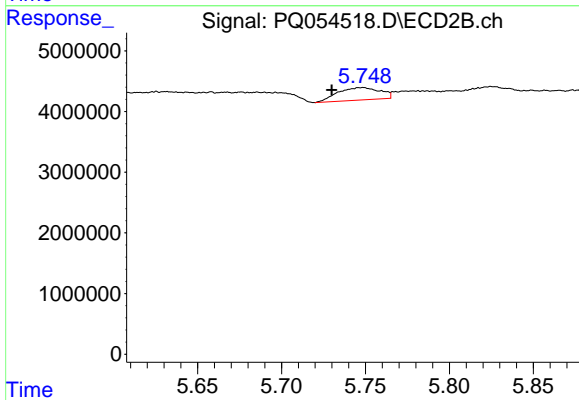
R.T.: 0.000 min  
 Exp R.T.: 6.339 min  
 Response: 0  
 Conc: N.D.



#22 AR-1248-2

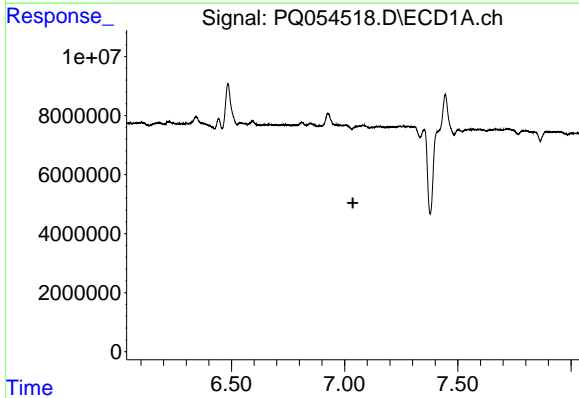
R.T.: 0.000 min  
 Exp R.T. : 6.817 min  
 Response: 0  
 Conc: N.D.

Instrument :  
 ECD\_Q  
 ClientSampled :



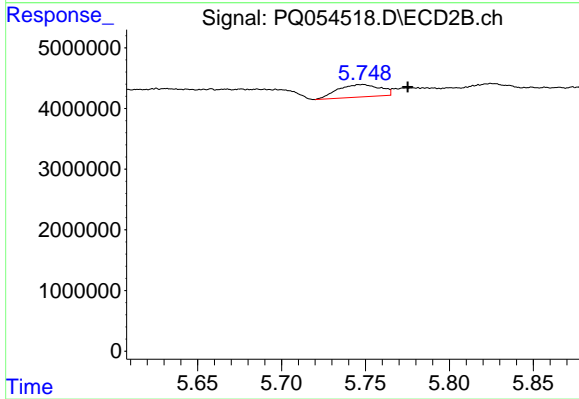
#22 AR-1248-2

R.T.: 5.749 min  
 Delta R.T.: 0.019 min  
 Response: 3611544  
 Conc: 10.14 ng/ml



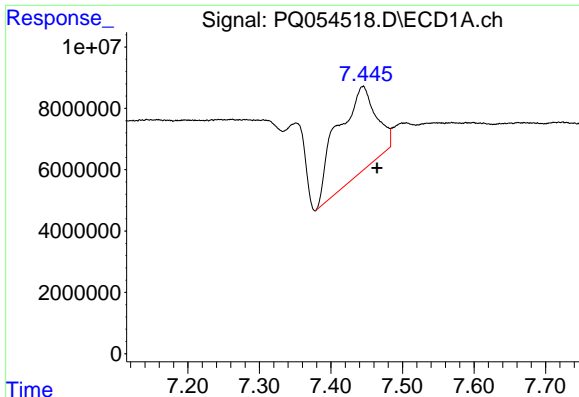
#23 AR-1248-3

R.T.: 0.000 min  
 Exp R.T. : 7.037 min  
 Response: 0  
 Conc: N.D.



#23 AR-1248-3

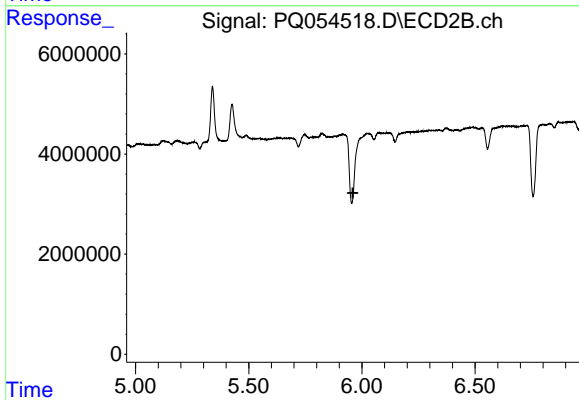
R.T.: 5.749 min  
 Delta R.T.: -0.026 min  
 Response: 3611544  
 Conc: 10.16 ng/ml



#24 AR-1248-4

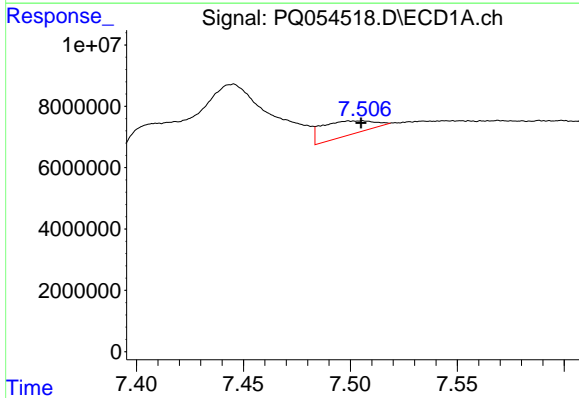
R.T.: 7.445 min  
 Delta R.T.: -0.020 min  
 Response: 106613242  
 Conc: 134.77 ng/ml

Instrument :  
 ECD\_Q  
 ClientSampleId :



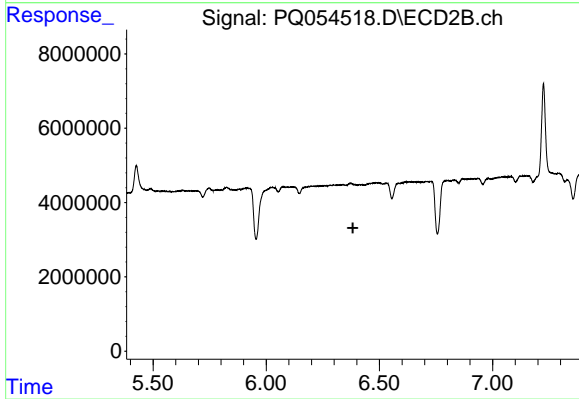
#24 AR-1248-4

R.T.: 0.000 min  
 Exp R.T. : 5.960 min  
 Response: 0  
 Conc: N.D.



#25 AR-1248-5

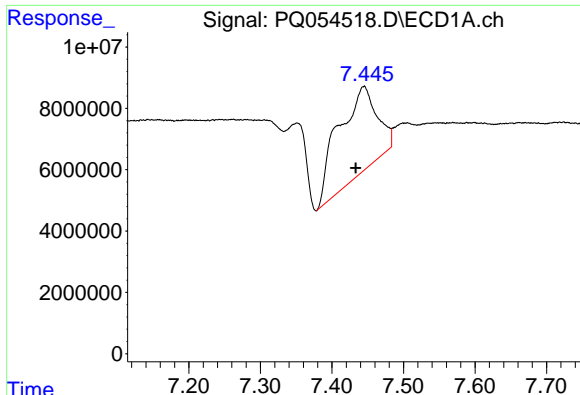
R.T.: 7.506 min  
 Delta R.T.: 0.000 min  
 Response: 7807686  
 Conc: 9.73 ng/ml



#25 AR-1248-5

R.T.: 0.000 min  
 Exp R.T. : 6.383 min  
 Response: 0  
 Conc: N.D.

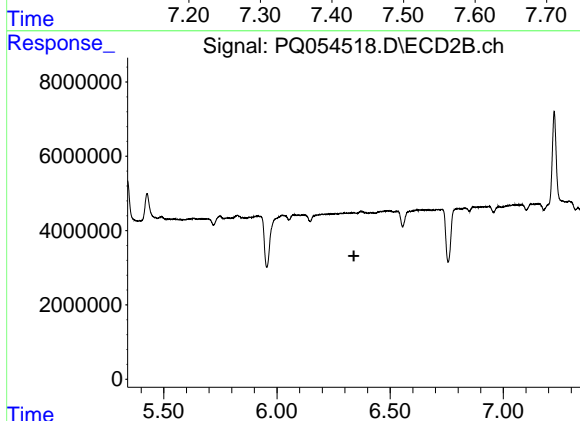




#26 AR-1254-1

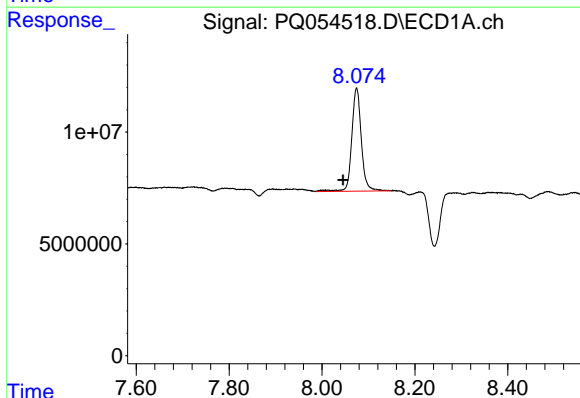
R.T.: 7.445 min  
 Delta R.T.: 0.012 min  
 Response: 106613242  
 Conc: 122.39 ng/ml

Instrument :  
 ECD\_Q  
 ClientSampled :



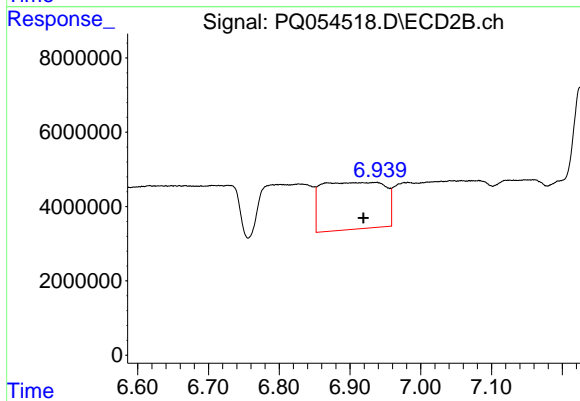
#26 AR-1254-1

R.T.: 0.000 min  
 Exp R.T. : 6.340 min  
 Response: 0  
 Conc: N.D.



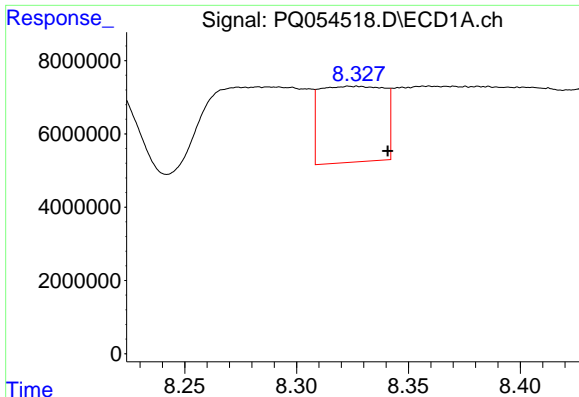
#28 AR-1254-3

R.T.: 8.075 min  
 Delta R.T.: 0.029 min  
 Response: 66205762  
 Conc: 47.54 ng/ml



#28 AR-1254-3

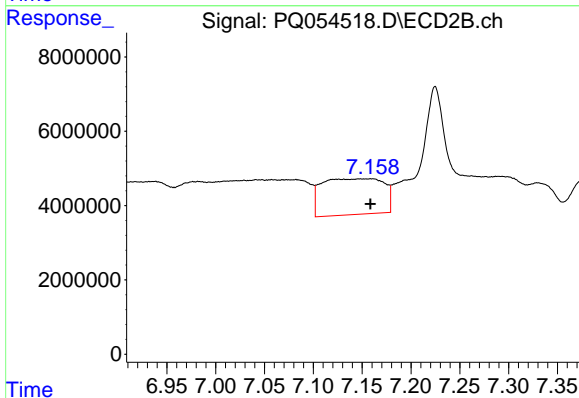
R.T.: 6.936 min  
 Delta R.T.: 0.017 min  
 Response: 78419107  
 Conc: 71.13 ng/ml



#29 AR-1254-4

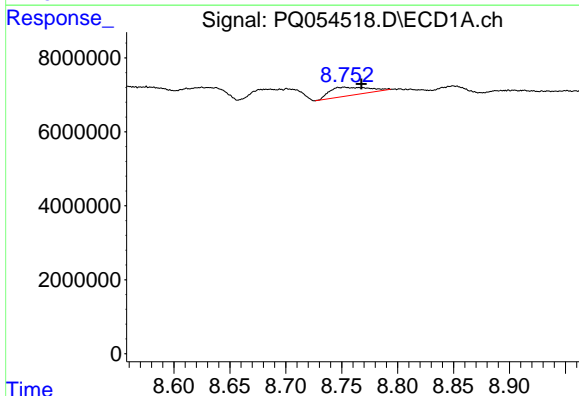
R.T.: 8.327 min  
 Delta R.T.: -0.014 min  
 Response: 41326383  
 Conc: 38.79 ng/ml

Instrument :  
 ECD\_Q  
 ClientSampled :



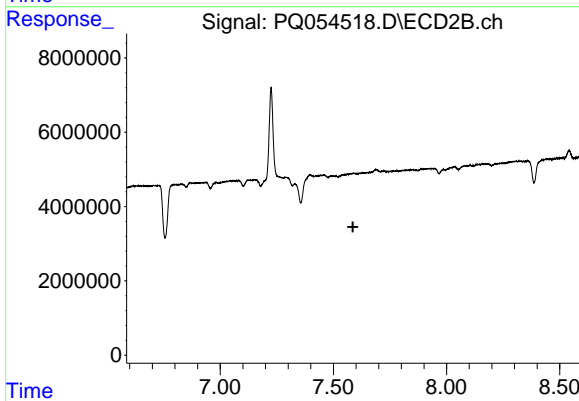
#29 AR-1254-4

R.T.: 7.158 min  
 Delta R.T.: 0.000 min  
 Response: 42478149  
 Conc: 56.18 ng/ml



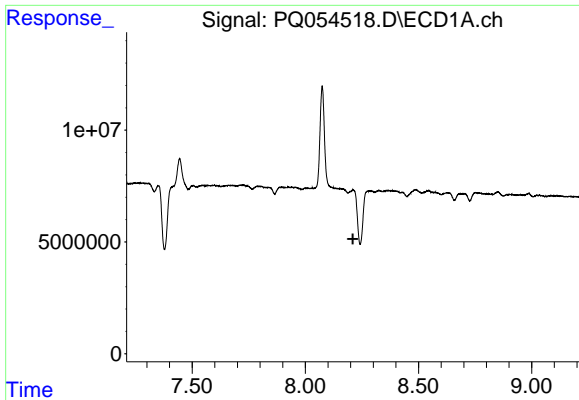
#30 AR-1254-5

R.T.: 8.752 min  
 Delta R.T.: -0.015 min  
 Response: 5489290  
 Conc: 4.78 ng/ml



#30 AR-1254-5

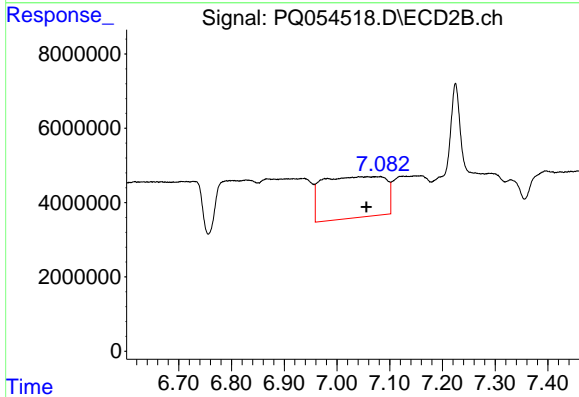
R.T.: 0.000 min  
 Exp R.T.: 7.586 min  
 Response: 0  
 Conc: N.D.



#31 AR-1260-1

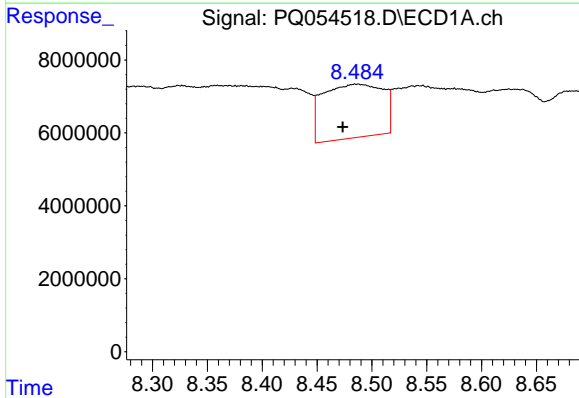
R.T.: 0.000 min  
 Exp R.T.: 8.210 min  
 Response: 0  
 Conc: N.D.

Instrument :  
 ECD\_Q  
 ClientSampled :



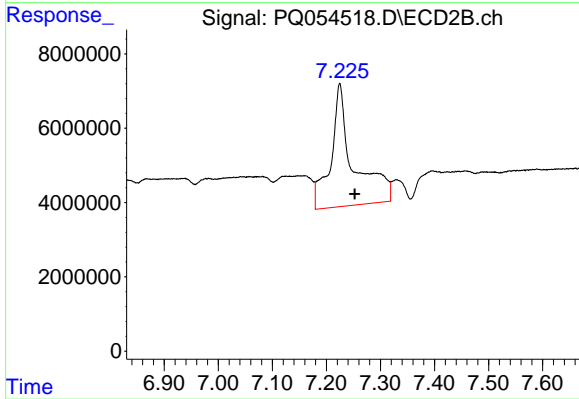
#31 AR-1260-1

R.T.: 7.058 min  
 Delta R.T.: 0.002 min  
 Response: 91629648  
 Conc: 122.01 ng/ml



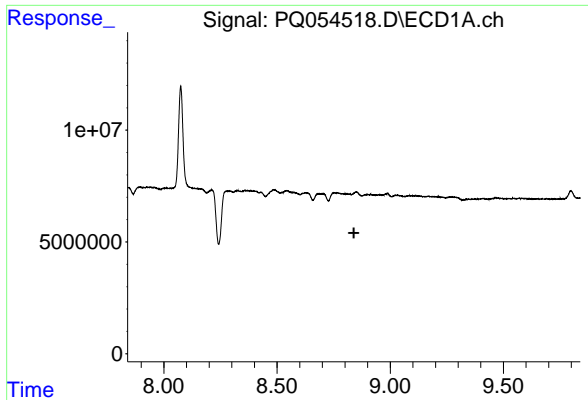
#32 AR-1260-2

R.T.: 8.486 min  
 Delta R.T.: 0.013 min  
 Response: 56263012  
 Conc: 47.81 ng/ml



#32 AR-1260-2

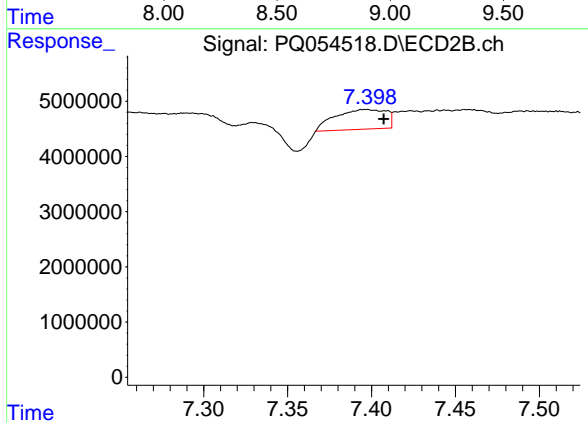
R.T.: 7.225 min  
 Delta R.T.: -0.027 min  
 Response: 95836148  
 Conc: 92.60 ng/ml



#33 AR-1260-3

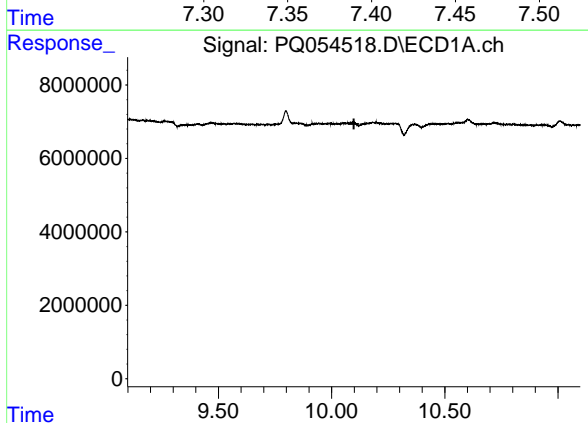
R.T.: 0.000 min  
 Exp R.T. : 8.839 min  
 Response: 0  
 Conc: N.D.

Instrument :  
 ECD\_Q  
 ClientSampled :



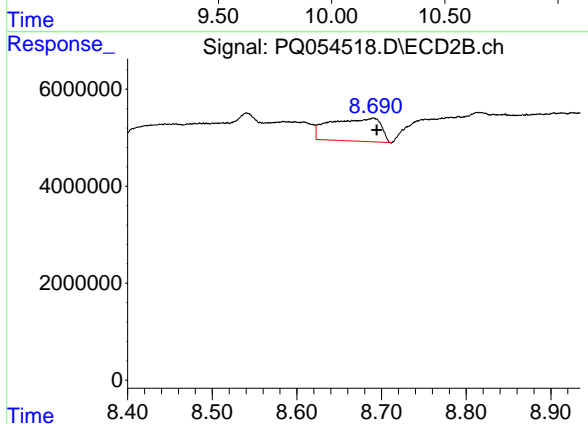
#33 AR-1260-3

R.T.: 7.397 min  
 Delta R.T.: -0.010 min  
 Response: 7562754  
 Conc: 8.55 ng/ml



#43 AR-1268-3

R.T.: 0.000 min  
 Exp R.T. : 10.099 min  
 Response: 0  
 Conc: N.D.



#43 AR-1268-3

R.T.: 8.690 min  
 Delta R.T.: -0.004 min  
 Response: 19673071  
 Conc: 9.76 ng/ml