

Data Path : Z:\pestpcbsrv\HPCHEM1\ECD_Q\Data\PQ091721\
 Data File : PQ054534.D
 Signal(s) : Signal #1: ECD1A.ch Signal #2: ECD2B.ch
 Acq On : 17 Sep 2021 11:58
 Operator : AJ\MA
 Sample : M3759-17RE
 Misc :
 ALS Vial : 6 Sample Multiplier: 1

Instrument :
 ECD_Q
 ClientSampled :

Integration File signal 1: autoint1.e
 Integration File signal 2: autoint2.e
 Quant Time: Sep 17 18:14:56 2021
 Quant Method : Z:\pestpcbsrv\HPCHEM1\ECD_Q\Method\PQ091421.M
 Quant Title : GC EXTRACTABLES
 QLast Update : Wed Sep 15 05:25:53 2021
 Response via : Initial Calibration
 Integrator: ChemStation

Volume Inj. : 2 µl
 Signal #1 Phase : ZB-MR1 Signal #2 Phase: ZB-MR2
 Signal #1 Info : 30Mx0.32mmx 0.50µ Signal #2 Info : 30M x 0.32mm x 0.25µm

Compound	RT#1	RT#2	Resp#1	Resp#2	ng/ml	ng/ml
System Monitoring Compounds						
1) SA Tetrachlo...	5.202	4.209	222.8E6	111.8E6	9.328	8.460
2) SA Decachlor...	11.377	9.545	78078462	62563249	4.626	4.617
Target Compounds						
3) L1 AR-1016-1	6.526	5.463	22479034	15288101	27.252	33.686
4) L1 AR-1016-2	6.526f	5.463f	22479034	15288101	18.428	21.542
6) L1 AR-1016-4	6.714	5.752f	23091406	7962512	37.346	28.668
7) L1 AR-1016-5	0.000	5.963	0	2602839	N.D.	7.541 #
8) L2 AR-1221-1	5.462	4.465	50082422	4908600	194.408	37.762 #
9) L2 AR-1221-2	5.553	4.537f	7484380	42356966	39.154	444.565 #
10) L2 AR-1221-3	5.639	4.657	20483156	11649990	34.176	36.469
11) L3 AR-1232-1	5.639	4.657	20483156	11649990	44.266	48.699
12) L3 AR-1232-2	6.231	5.463f	22720251	15288101	80.268	49.245 #
13) L3 AR-1232-3	6.526f	0.000	22479034	0	42.751	N.D. #
14) L3 AR-1232-4	6.714	5.752f	23091406	7962512	86.431	63.034 #
15) L3 AR-1232-5	0.000	5.963	0	2602839	N.D.	17.947 #
16) L4 AR-1242-1	6.526	5.463	22479034	15288101	38.162	47.392
17) L4 AR-1242-2	6.526f	5.463f	22479034	15288101	25.054	29.999
19) L4 AR-1242-4	6.714	5.752f	23091406	7962512	50.475	31.461 #
20) L4 AR-1242-5	7.511	6.337	41114173	11809926	87.808	33.241 #
21) L5 AR-1248-1	6.526	5.463	22479034	15288101	44.913	58.431 #
22) L5 AR-1248-2	0.000	5.752f	0	7962512	N.D.	22.355 #
23) L5 AR-1248-3	0.000	5.752f	0	7962512	N.D.	22.391 #
24) L5 AR-1248-4	7.444f	5.963	12096293	2602839	15.290	6.059 #
25) L5 AR-1248-5	7.511	6.368f	41114173	29293539	51.235	68.375 #
26) L6 AR-1254-1	7.444	6.337	12096293	11809926	13.886	15.503
27) L6 AR-1254-2	0.000	6.507	0	3237766	N.D.	4.627 #
28) L6 AR-1254-3	8.039	0.000	21681173	0	15.567	N.D. #
29) L6 AR-1254-4	8.320f	7.130f	89324999	16447048	83.848	21.752 #
30) L6 AR-1254-5	0.000	7.597	0	51849226	N.D.	46.849 #
31) L7 AR-1260-1	8.235f	0.000	38815959	0	39.113	N.D. #
32) L7 AR-1260-2	8.472	7.266	51047555	9812806	43.382	9.482 #
33) L7 AR-1260-3	8.857f	0.000	92370434	0	120.606	N.D. #
34) L7 AR-1260-4	9.065f	7.908f	25497229	14864746	27.296	21.482
35) L7 AR-1260-5	9.437	8.148	32958760	25343161	17.878	13.259 #
36) L8 AR-1262-1	8.857f	7.597	92370434	51849226	78.613	100.351 #
37) L8 AR-1262-2	9.437	8.148	32958760	25343161	15.196	11.442
38) L8 AR-1262-3	9.754	0.000	23280358	0	26.137	N.D. #
39) L8 AR-1262-4	9.851	8.501f	33378532	7621907	59.169	5.012 #
40) L8 AR-1262-5	0.000	8.983	0	11401429	N.D.	16.601 #
41) L9 AR-1268-1	9.754	0.000	23280358	0	9.283	N.D. #
42) L9 AR-1268-2	9.851	8.501	33378532	7621907	14.594	3.308 #
43) L9 AR-1268-3	10.107	8.707	6842316	13506778	3.562	6.702 #

Data Path : Z:\pestpcbsrv\HPCHEM1\ECD_Q\Data\PQ091721\
 Data File : PQ054534.D
 Signal(s) : Signal #1: ECD1A.ch Signal #2: ECD2B.ch
 Acq On : 17 Sep 2021 11:58
 Operator : AJ\MA
 Sample : M3759-17RE
 Misc :
 ALS Vial : 6 Sample Multiplier: 1

Instrument :
 ECD_Q
 ClientSampleId :

Integration File signal 1: autoint1.e
 Integration File signal 2: autoint2.e
 Quant Time: Sep 17 18:14:56 2021
 Quant Method : Z:\pestpcbsrv\HPCHEM1\ECD_Q\Method\PQ091421.M
 Quant Title : GC EXTRACTABLES
 QLast Update : Wed Sep 15 05:25:53 2021
 Response via : Initial Calibration
 Integrator: ChemStation

Volume Inj. : 2 µl
 Signal #1 Phase : ZB-MR1 Signal #2 Phase: ZB-MR2
 Signal #1 Info : 30Mx0.32mmx 0.50µ Signal #2 Info : 30M x 0.32mm x 0.25µm

	Compound	RT#1	RT#2	Resp#1	Resp#2	ng/ml	ng/ml
44)	L9 AR-1268-4	0.000	8.983	0	11401429	N.D.	14.666 #
45)	L9 AR-1268-5	11.029f	9.293	14909299	14847280	2.365	2.582

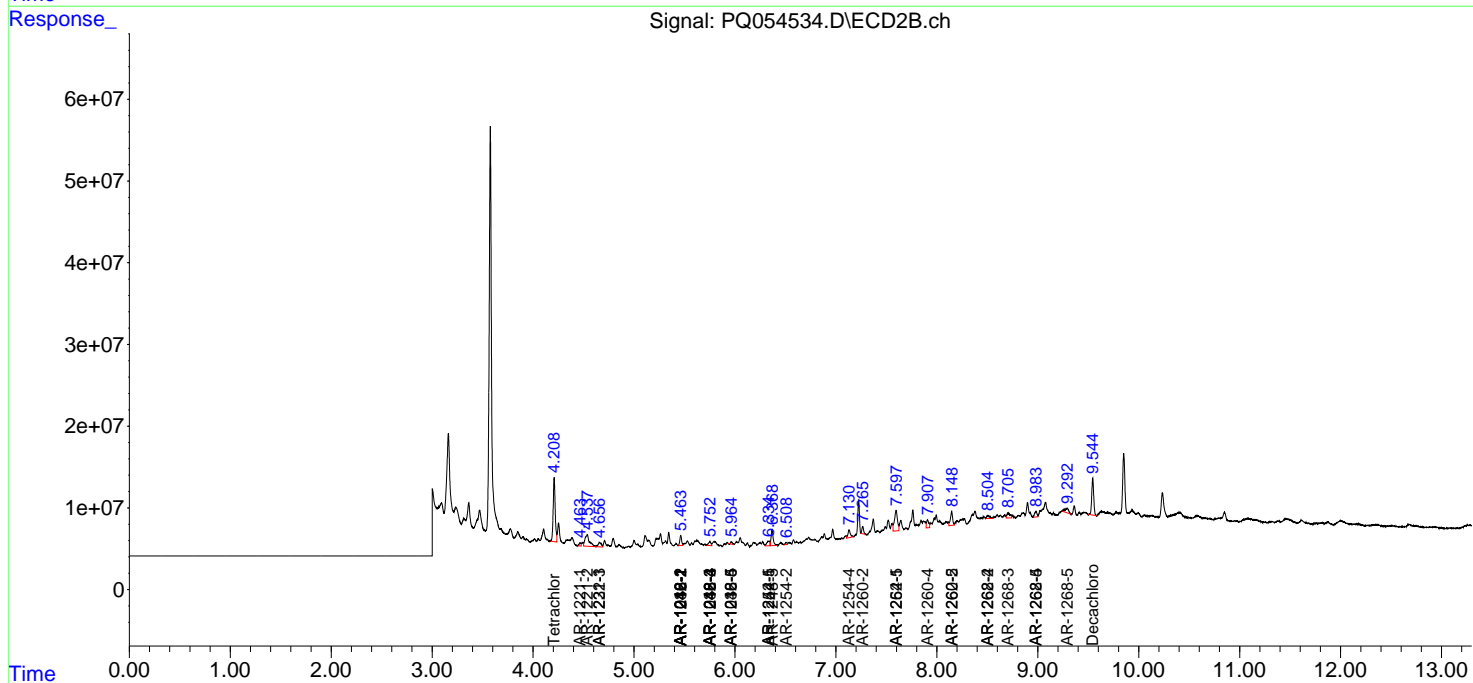
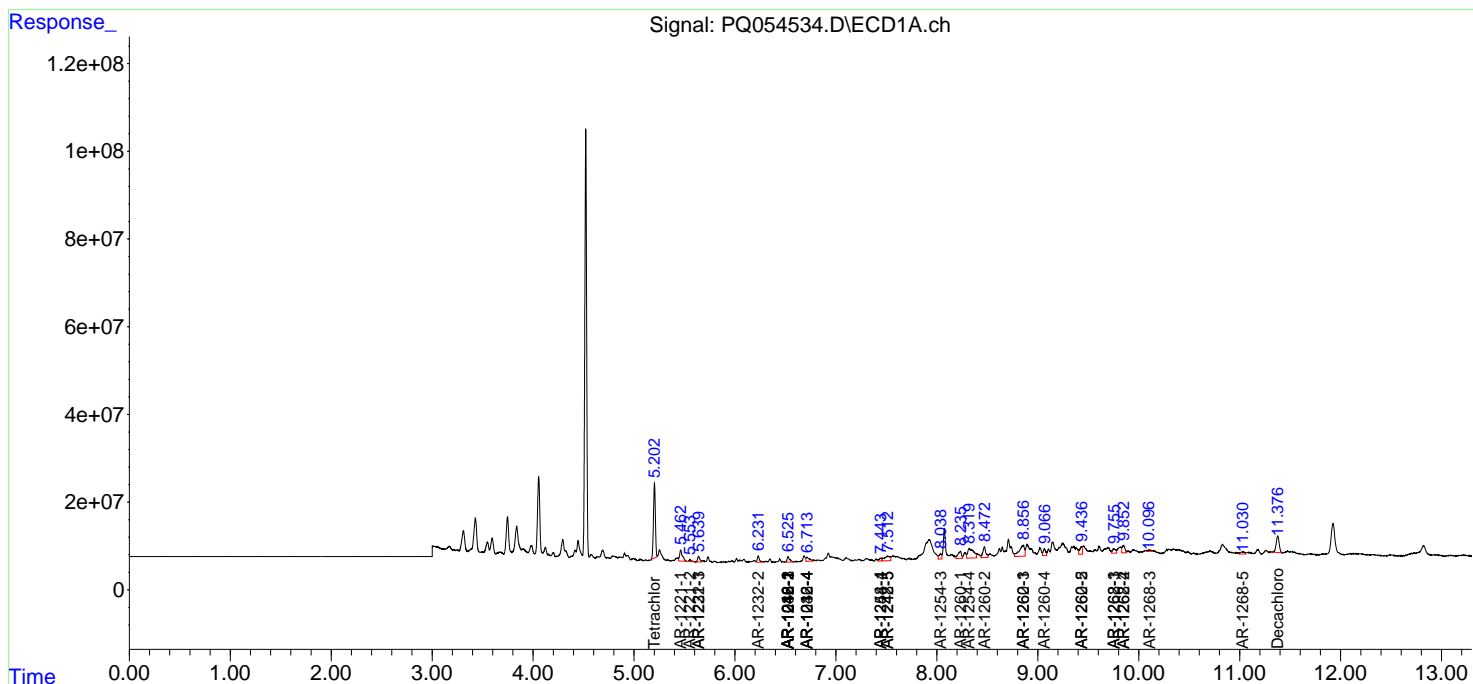
(f)=RT Delta > 1/2 Window (#)=Amounts differ by > 25% (m)=manual int.

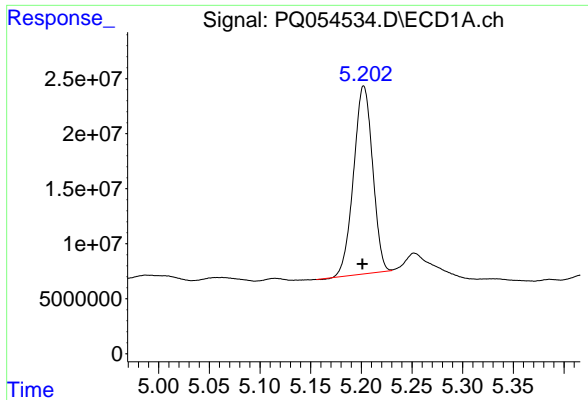
Data Path : Z:\pestpcbsrv\HPCHEM1\ECD_Q\Data\PQ091721\
 Data File : PQ054534.D
 Signal(s) : Signal #1: ECD1A.ch Signal #2: ECD2B.ch
 Acq On : 17 Sep 2021 11:58
 Operator : AJ\MA
 Sample : M3759-17RE
 Misc :
 ALS Vial : 6 Sample Multiplier: 1

Instrument :
 ECD_Q
 ClientSampled :

Integration File signal 1: autoint1.e
 Integration File signal 2: autoint2.e
 Quant Time: Sep 17 18:14:56 2021
 Quant Method : Z:\pestpcbsrv\HPCHEM1\ECD_Q\Method\PQ091421.M
 Quant Title : GC EXTRACTABLES
 QLast Update : Wed Sep 15 05:25:53 2021
 Response via : Initial Calibration
 Integrator: ChemStation

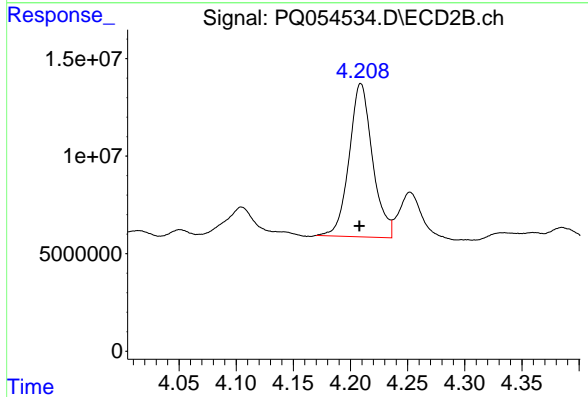
Volume Inj. : 2 µl
 Signal #1 Phase : ZB-MR1 Signal #2 Phase: ZB-MR2
 Signal #1 Info : 30Mx0.32mmx 0.50µ Signal #2 Info : 30M x 0.32mm x 0.25µm



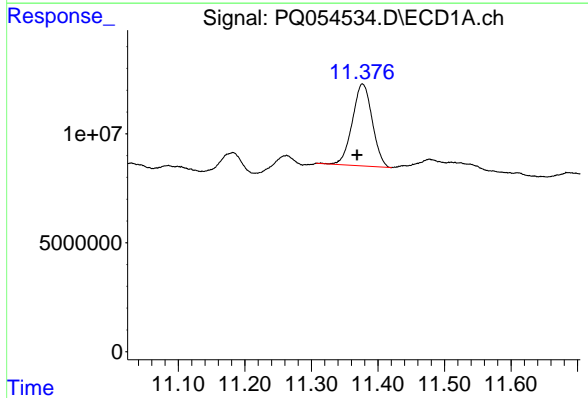


#1 Tetrachloro-m-xylene
 R.T.: 5.202 min
 Delta R.T.: 0.001 min
 Response: 222760124
 Conc: 9.33 ng/ml

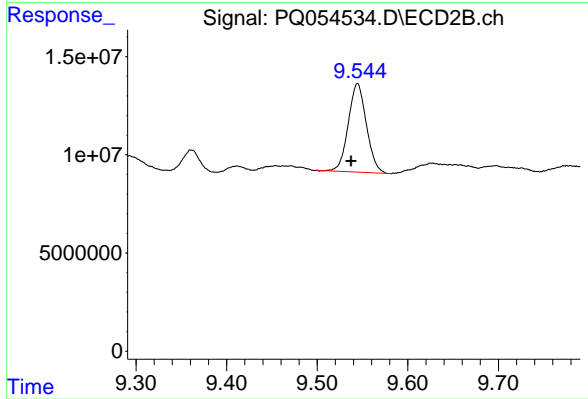
Instrument :
 ECD_Q
 ClientSampleId :



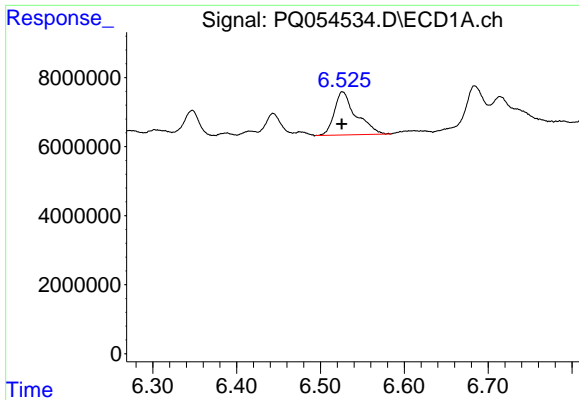
#1 Tetrachloro-m-xylene
 R.T.: 4.209 min
 Delta R.T.: 0.001 min
 Response: 111835598
 Conc: 8.46 ng/ml



#2 Decachlorobiphenyl
 R.T.: 11.377 min
 Delta R.T.: 0.008 min
 Response: 78078462
 Conc: 4.63 ng/ml



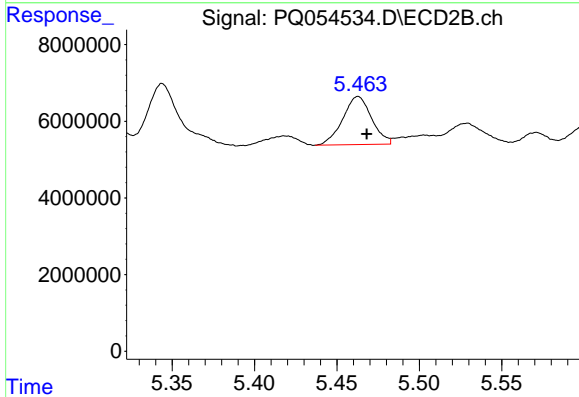
#2 Decachlorobiphenyl
 R.T.: 9.545 min
 Delta R.T.: 0.007 min
 Response: 62563249
 Conc: 4.62 ng/ml



#3 AR-1016-1

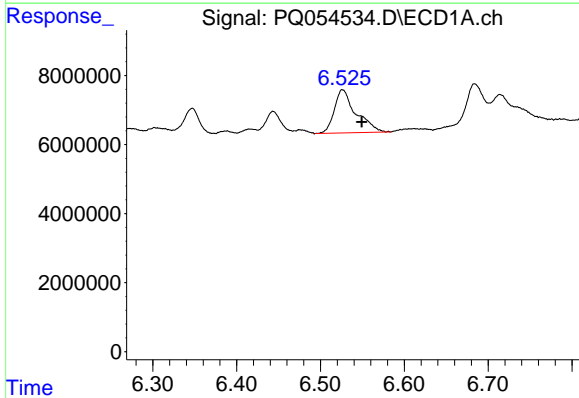
R.T.: 6.526 min
 Delta R.T.: 0.001 min
 Response: 22479034
 Conc: 27.25 ng/ml

Instrument :
 ECD_Q
 ClientSampleId :



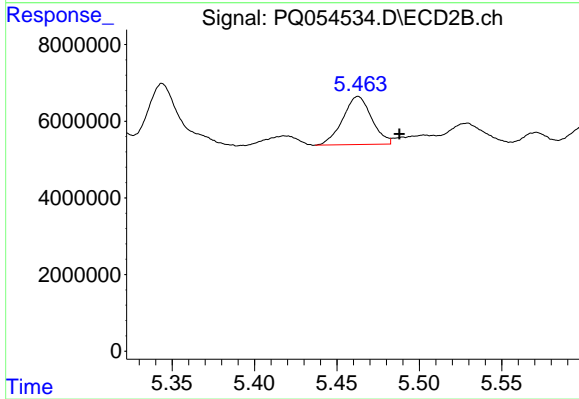
#3 AR-1016-1

R.T.: 5.463 min
 Delta R.T.: -0.005 min
 Response: 15288101
 Conc: 33.69 ng/ml



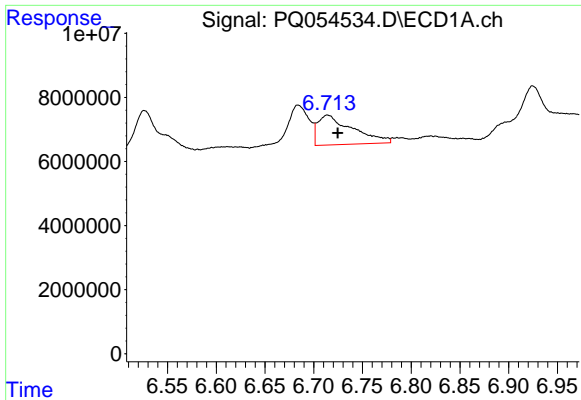
#4 AR-1016-2

R.T.: 6.526 min
 Delta R.T.: -0.023 min
 Response: 22479034
 Conc: 18.43 ng/ml



#4 AR-1016-2

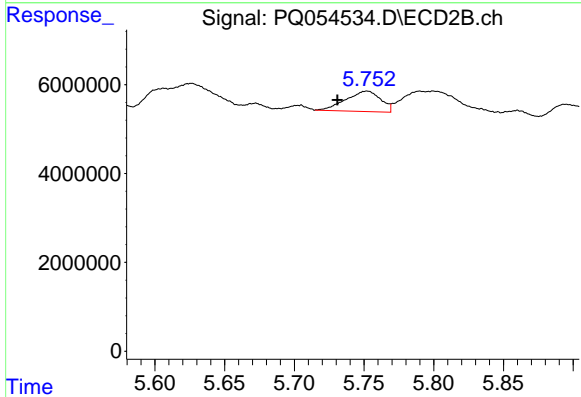
R.T.: 5.463 min
 Delta R.T.: -0.025 min
 Response: 15288101
 Conc: 21.54 ng/ml



#6 AR-1016-4

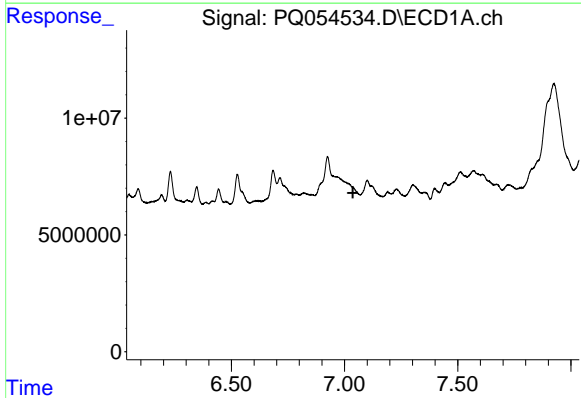
R.T.: 6.714 min
 Delta R.T.: -0.010 min
 Response: 23091406
 Conc: 37.35 ng/ml

Instrument :
 ECD_Q
 ClientSampled :



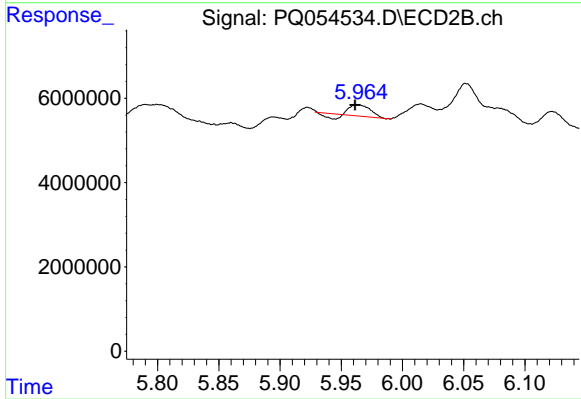
#6 AR-1016-4

R.T.: 5.752 min
 Delta R.T.: 0.021 min
 Response: 7962512
 Conc: 28.67 ng/ml



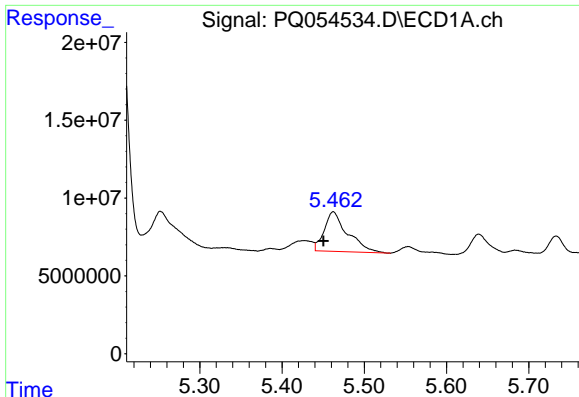
#7 AR-1016-5

R.T.: 0.000 min
 Exp R.T. : 7.037 min
 Response: 0
 Conc: N.D.



#7 AR-1016-5

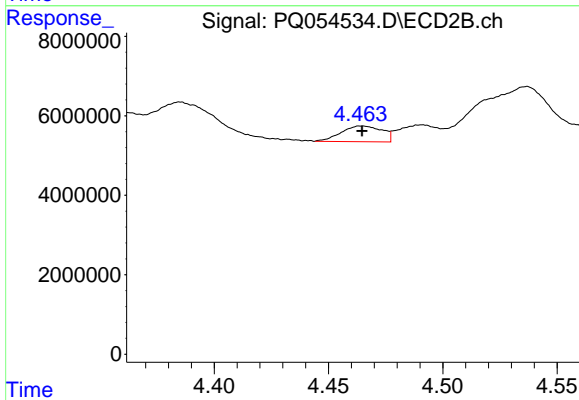
R.T.: 5.963 min
 Delta R.T.: 0.002 min
 Response: 2602839
 Conc: 7.54 ng/ml



#8 AR-1221-1

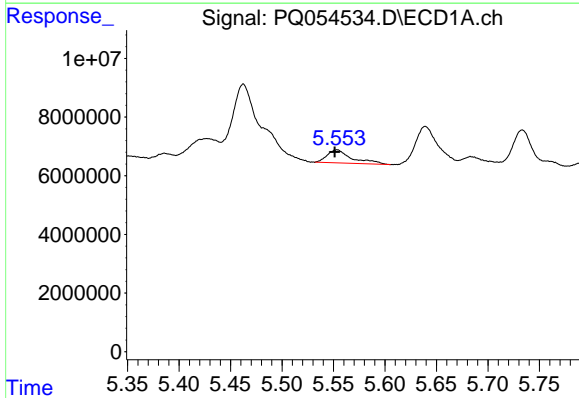
R.T.: 5.462 min
 Delta R.T.: 0.012 min
 Response: 50082422
 Conc: 194.41 ng/ml

Instrument :
 ECD_Q
 ClientSampleId :



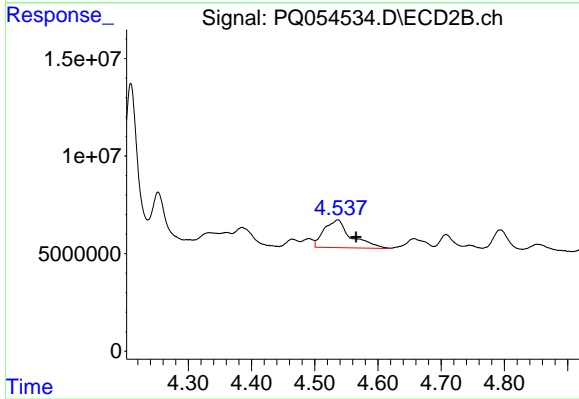
#8 AR-1221-1

R.T.: 4.465 min
 Delta R.T.: 0.000 min
 Response: 4908600
 Conc: 37.76 ng/ml



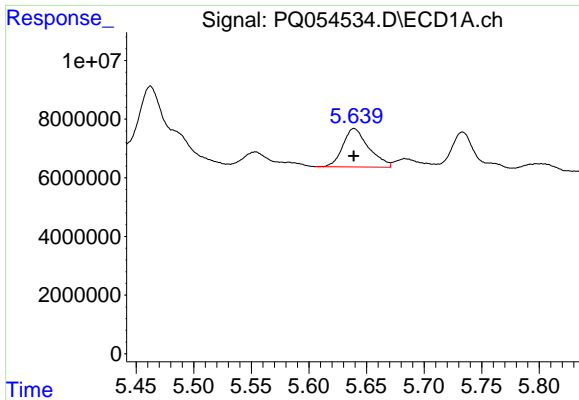
#9 AR-1221-2

R.T.: 5.553 min
 Delta R.T.: 0.002 min
 Response: 7484380
 Conc: 39.15 ng/ml



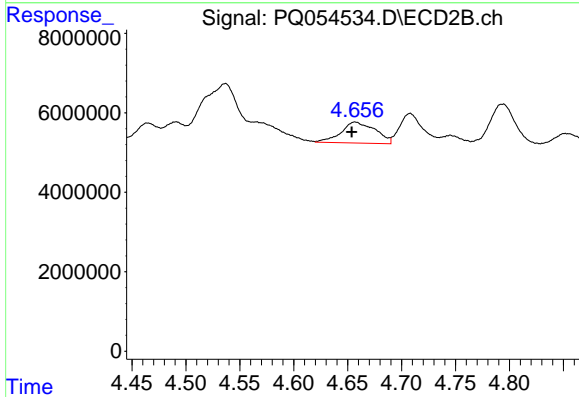
#9 AR-1221-2

R.T.: 4.537 min
 Delta R.T.: -0.029 min
 Response: 42356966
 Conc: 444.57 ng/ml

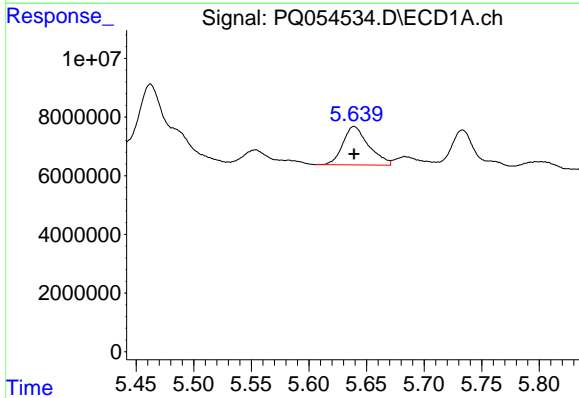


#10 AR-1221-3
 R.T.: 5.639 min
 Delta R.T.: 0.000 min
 Response: 20483156
 Conc: 34.18 ng/ml

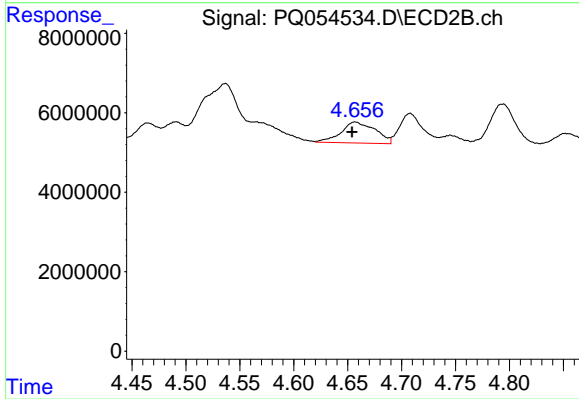
Instrument :
 ECD_Q
 ClientSampleId :



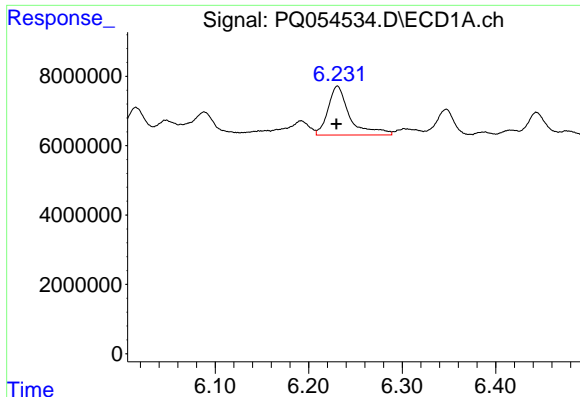
#10 AR-1221-3
 R.T.: 4.657 min
 Delta R.T.: 0.003 min
 Response: 11649990
 Conc: 36.47 ng/ml



#11 AR-1232-1
 R.T.: 5.639 min
 Delta R.T.: 0.000 min
 Response: 20483156
 Conc: 44.27 ng/ml



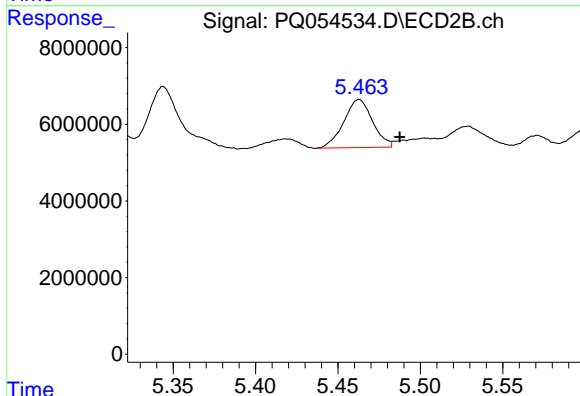
#11 AR-1232-1
 R.T.: 4.657 min
 Delta R.T.: 0.003 min
 Response: 11649990
 Conc: 48.70 ng/ml



#12 AR-1232-2

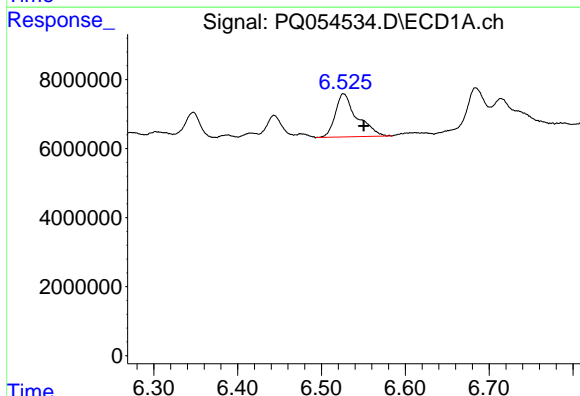
R.T.: 6.231 min
 Delta R.T.: 0.000 min
 Response: 22720251
 Conc: 80.27 ng/ml

Instrument :
 ECD_Q
 ClientSampleId :



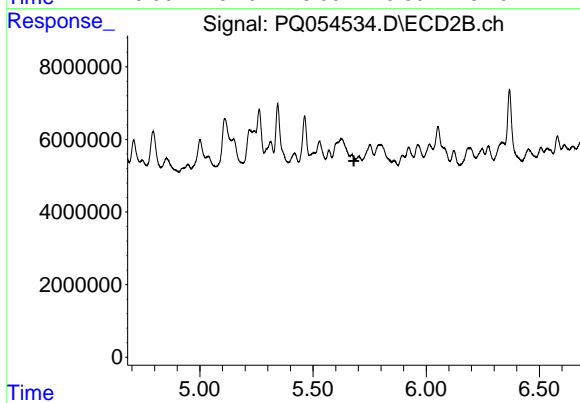
#12 AR-1232-2

R.T.: 5.463 min
 Delta R.T.: -0.025 min
 Response: 15288101
 Conc: 49.24 ng/ml



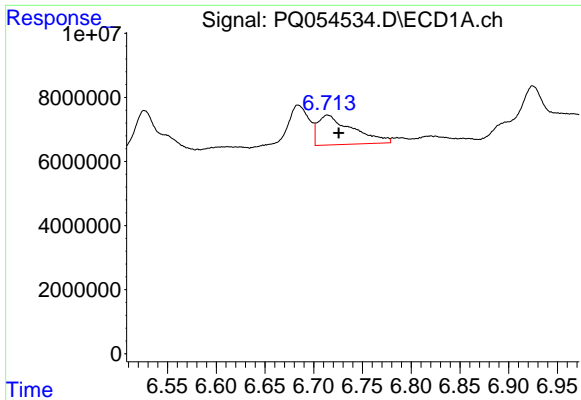
#13 AR-1232-3

R.T.: 6.526 min
 Delta R.T.: -0.024 min
 Response: 22479034
 Conc: 42.75 ng/ml



#13 AR-1232-3

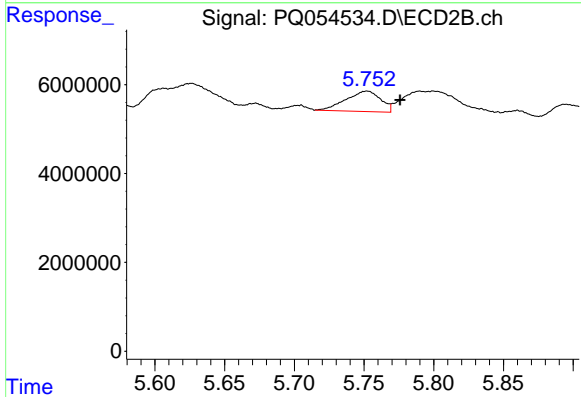
R.T.: 0.000 min
 Exp R.T. : 5.681 min
 Response: 0
 Conc: N.D.



#14 AR-1232-4

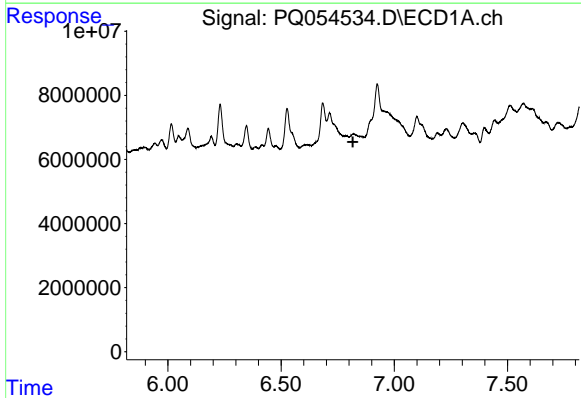
R.T.: 6.714 min
 Delta R.T.: -0.012 min
 Response: 23091406
 Conc: 86.43 ng/ml

Instrument :
 ECD_Q
 ClientSampleId :



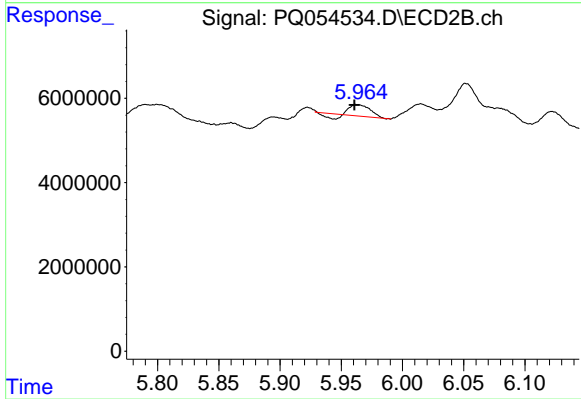
#14 AR-1232-4

R.T.: 5.752 min
 Delta R.T.: -0.024 min
 Response: 7962512
 Conc: 63.03 ng/ml



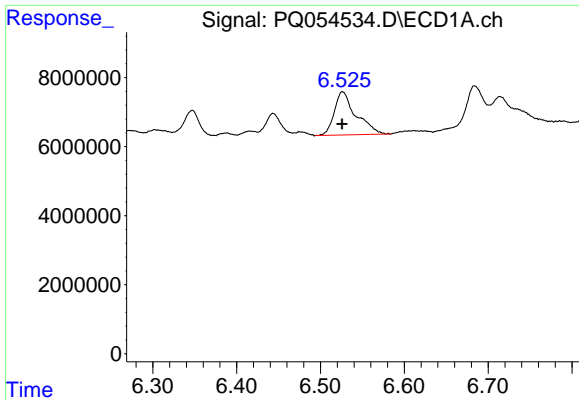
#15 AR-1232-5

R.T.: 0.000 min
 Exp R.T. : 6.817 min
 Response: 0
 Conc: N.D.



#15 AR-1232-5

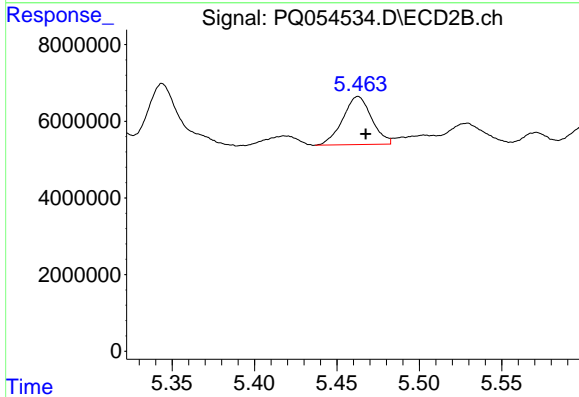
R.T.: 5.963 min
 Delta R.T.: 0.002 min
 Response: 2602839
 Conc: 17.95 ng/ml



#16 AR-1242-1

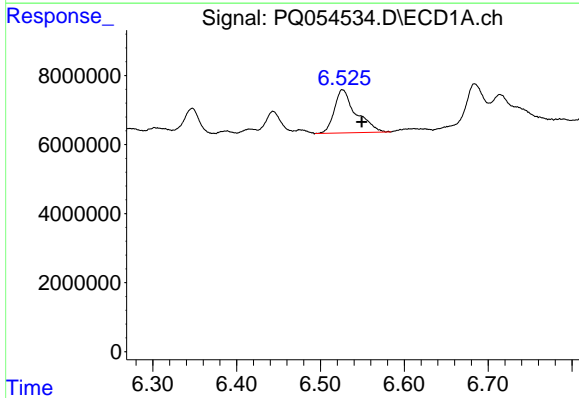
R.T.: 6.526 min
 Delta R.T.: 0.000 min
 Response: 22479034
 Conc: 38.16 ng/ml

Instrument :
 ECD_Q
 ClientSampleId :



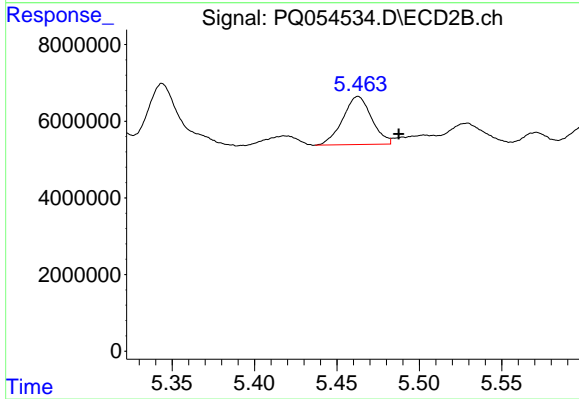
#16 AR-1242-1

R.T.: 5.463 min
 Delta R.T.: -0.005 min
 Response: 15288101
 Conc: 47.39 ng/ml



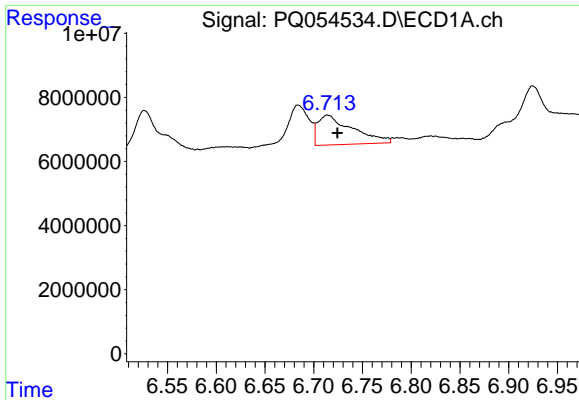
#17 AR-1242-2

R.T.: 6.526 min
 Delta R.T.: -0.023 min
 Response: 22479034
 Conc: 25.05 ng/ml



#17 AR-1242-2

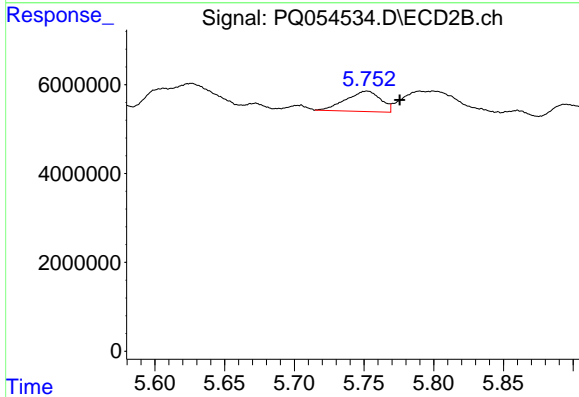
R.T.: 5.463 min
 Delta R.T.: -0.025 min
 Response: 15288101
 Conc: 30.00 ng/ml



#19 AR-1242-4

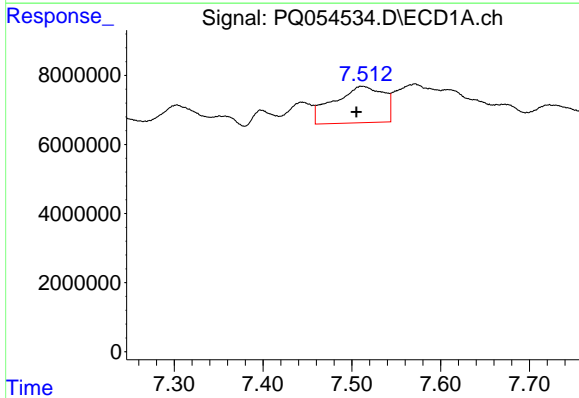
R.T.: 6.714 min
 Delta R.T.: -0.010 min
 Response: 23091406
 Conc: 50.47 ng/ml

Instrument :
 ECD_Q
 ClientSampleId :



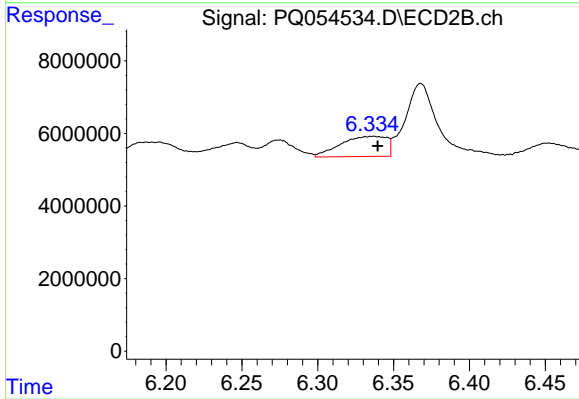
#19 AR-1242-4

R.T.: 5.752 min
 Delta R.T.: -0.023 min
 Response: 7962512
 Conc: 31.46 ng/ml



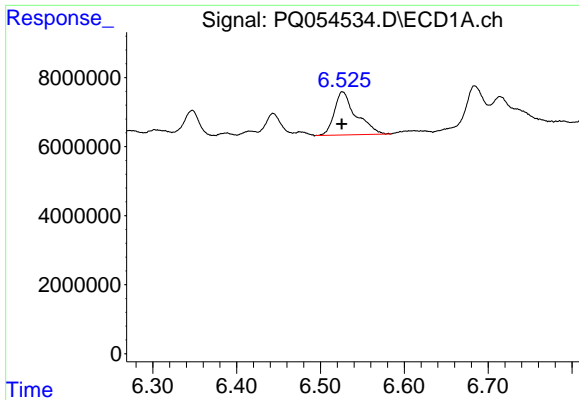
#20 AR-1242-5

R.T.: 7.511 min
 Delta R.T.: 0.006 min
 Response: 41114173
 Conc: 87.81 ng/ml



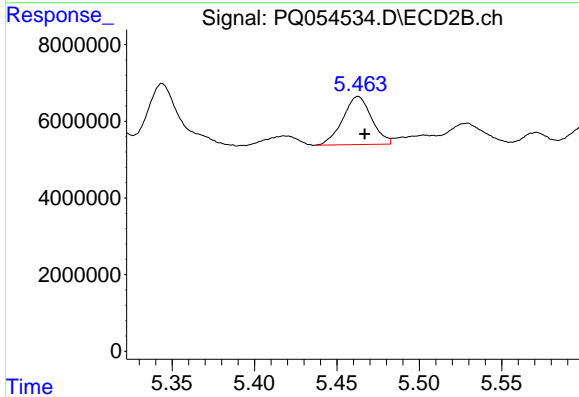
#20 AR-1242-5

R.T.: 6.337 min
 Delta R.T.: -0.003 min
 Response: 11809926
 Conc: 33.24 ng/ml

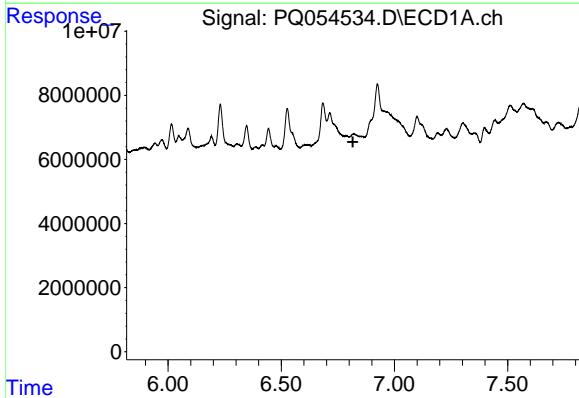


#21 AR-1248-1
 R.T.: 6.526 min
 Delta R.T.: 0.001 min
 Response: 22479034
 Conc: 44.91 ng/ml

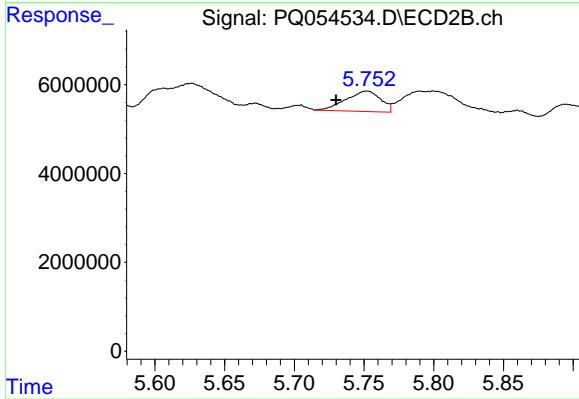
Instrument :
 ECD_Q
 ClientSampled :



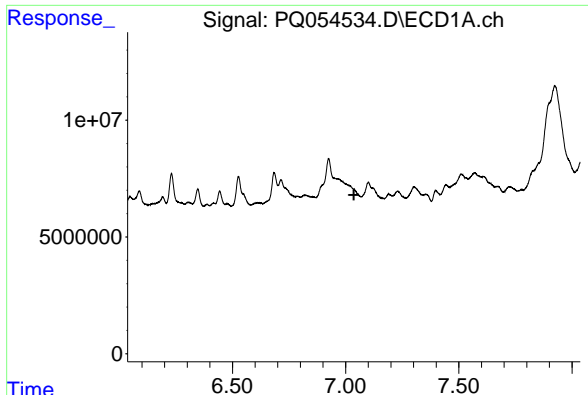
#21 AR-1248-1
 R.T.: 5.463 min
 Delta R.T.: -0.004 min
 Response: 15288101
 Conc: 58.43 ng/ml



#22 AR-1248-2
 R.T.: 0.000 min
 Exp R.T. : 6.817 min
 Response: 0
 Conc: N.D.



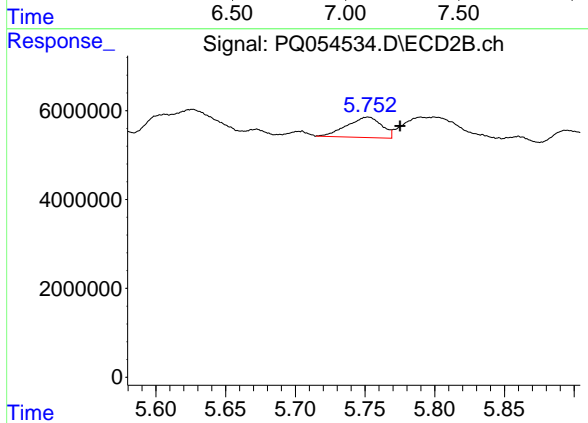
#22 AR-1248-2
 R.T.: 5.752 min
 Delta R.T.: 0.022 min
 Response: 7962512
 Conc: 22.36 ng/ml



#23 AR-1248-3

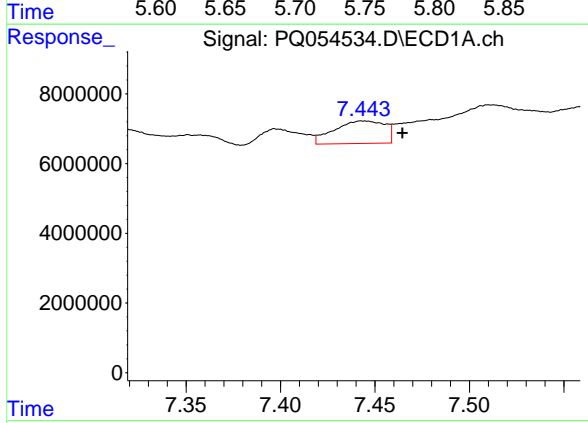
R.T.: 0.000 min
 Exp R.T.: 7.037 min
 Response: 0
 Conc: N.D.

Instrument :
 ECD_Q
 ClientSampled :



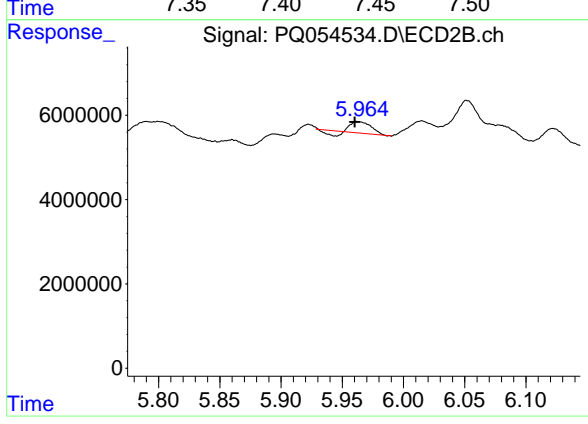
#23 AR-1248-3

R.T.: 5.752 min
 Delta R.T.: -0.023 min
 Response: 7962512
 Conc: 22.39 ng/ml



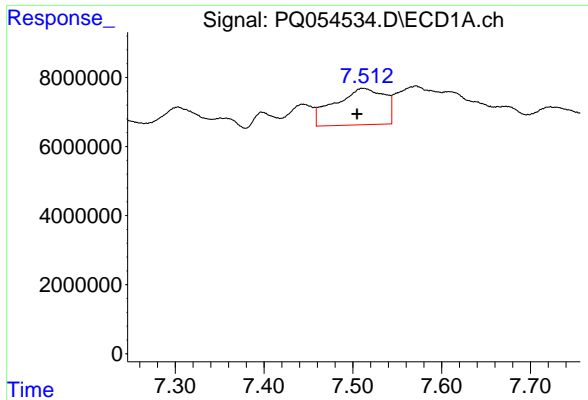
#24 AR-1248-4

R.T.: 7.444 min
 Delta R.T.: -0.021 min
 Response: 12096293
 Conc: 15.29 ng/ml



#24 AR-1248-4

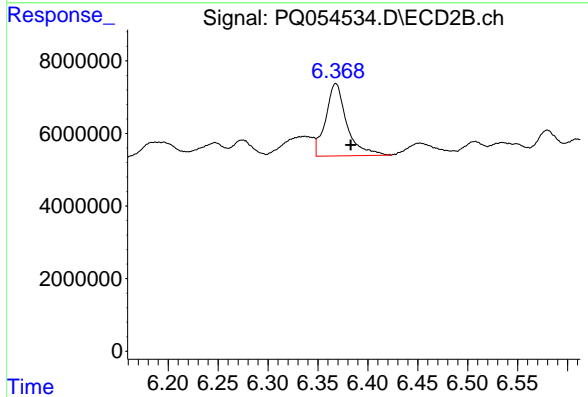
R.T.: 5.963 min
 Delta R.T.: 0.003 min
 Response: 2602839
 Conc: 6.06 ng/ml



#25 AR-1248-5

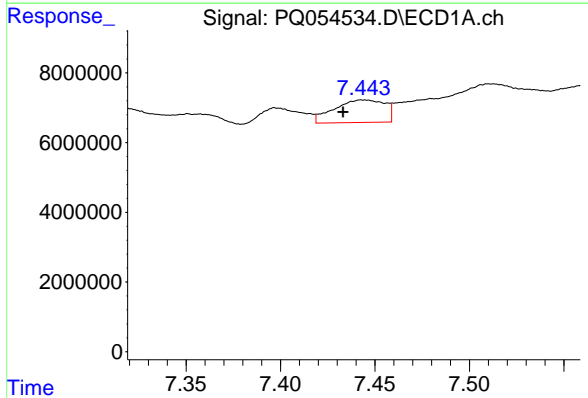
R.T.: 7.511 min
 Delta R.T.: 0.006 min
 Response: 41114173
 Conc: 51.24 ng/ml

Instrument :
 ECD_Q
 ClientSampleId :



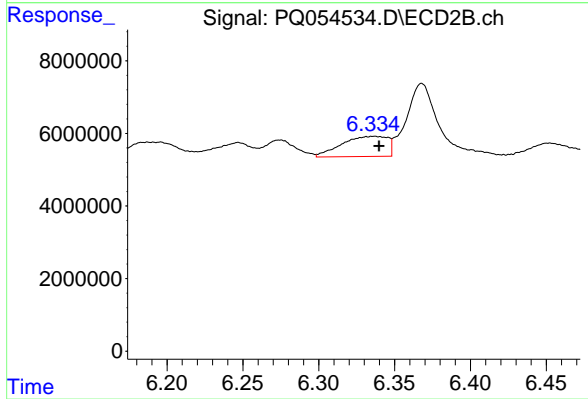
#25 AR-1248-5

R.T.: 6.368 min
 Delta R.T.: -0.015 min
 Response: 29293539
 Conc: 68.38 ng/ml



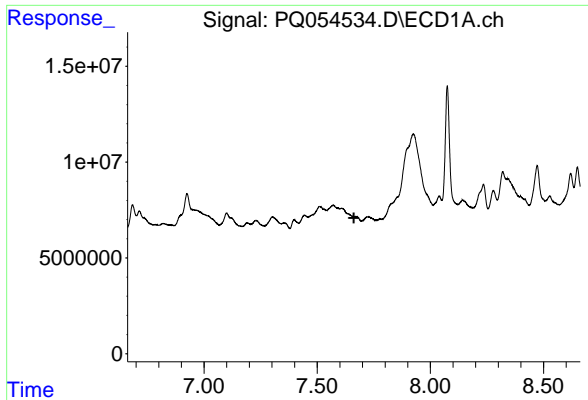
#26 AR-1254-1

R.T.: 7.444 min
 Delta R.T.: 0.011 min
 Response: 12096293
 Conc: 13.89 ng/ml



#26 AR-1254-1

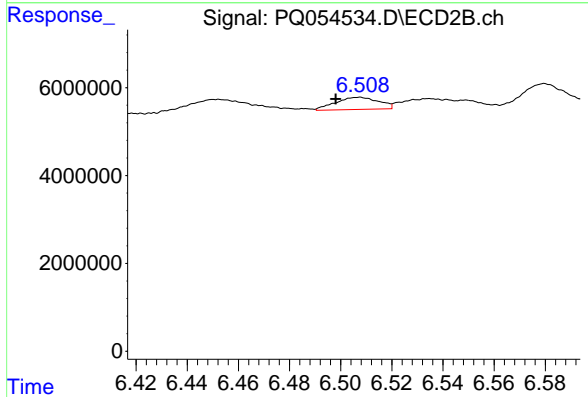
R.T.: 6.337 min
 Delta R.T.: -0.003 min
 Response: 11809926
 Conc: 15.50 ng/ml



#27 AR-1254-2

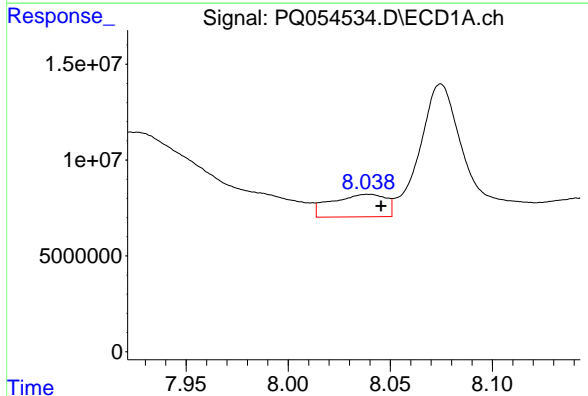
R.T.: 0.000 min
 Exp R.T.: 7.662 min
 Response: 0
 Conc: N.D.

Instrument :
 ECD_Q
 ClientSampleId :



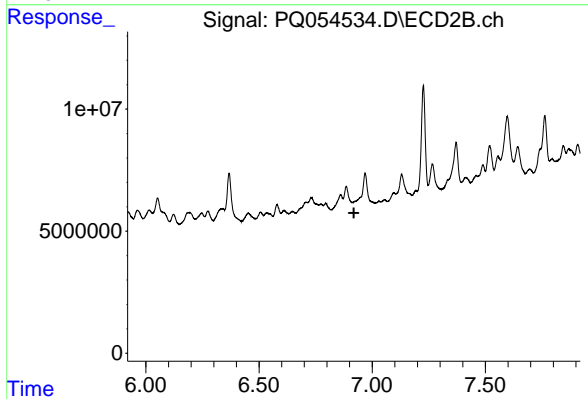
#27 AR-1254-2

R.T.: 6.507 min
 Delta R.T.: 0.009 min
 Response: 3237766
 Conc: 4.63 ng/ml



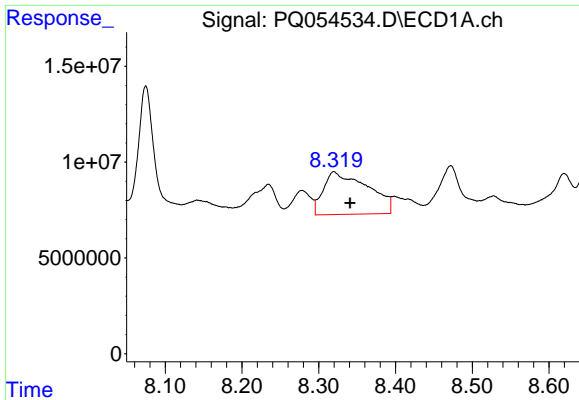
#28 AR-1254-3

R.T.: 8.039 min
 Delta R.T.: -0.006 min
 Response: 21681173
 Conc: 15.57 ng/ml



#28 AR-1254-3

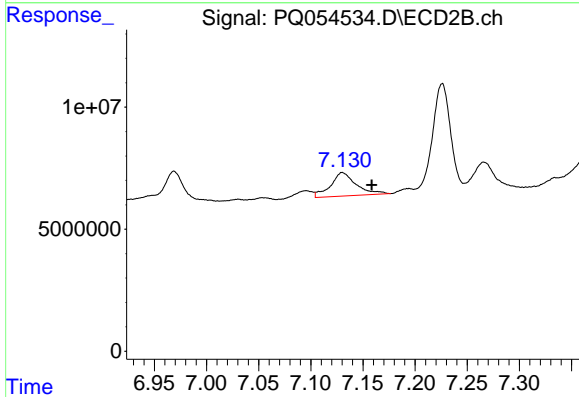
R.T.: 0.000 min
 Exp R.T.: 6.919 min
 Response: 0
 Conc: N.D.



#29 AR-1254-4

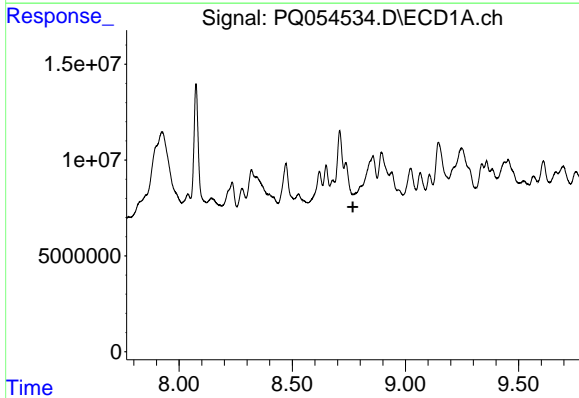
R.T.: 8.320 min
 Delta R.T.: -0.021 min
 Response: 89324999
 Conc: 83.85 ng/ml

Instrument :
 ECD_Q
 ClientSampleId :



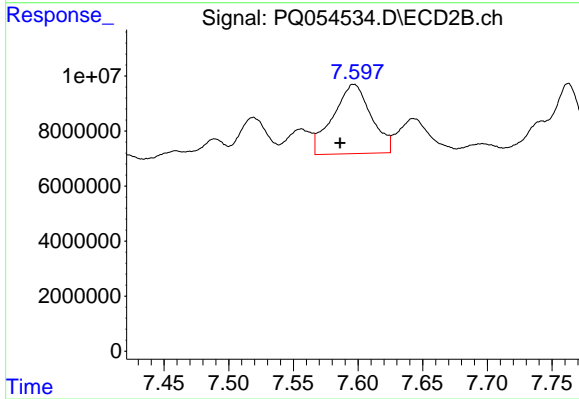
#29 AR-1254-4

R.T.: 7.130 min
 Delta R.T.: -0.028 min
 Response: 16447048
 Conc: 21.75 ng/ml



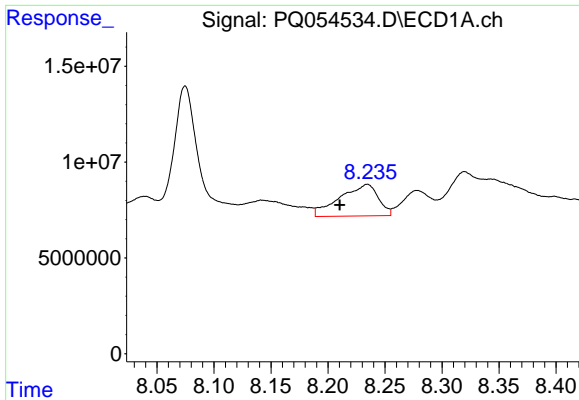
#30 AR-1254-5

R.T.: 0.000 min
 Exp R.T. : 8.768 min
 Response: 0
 Conc: N.D.



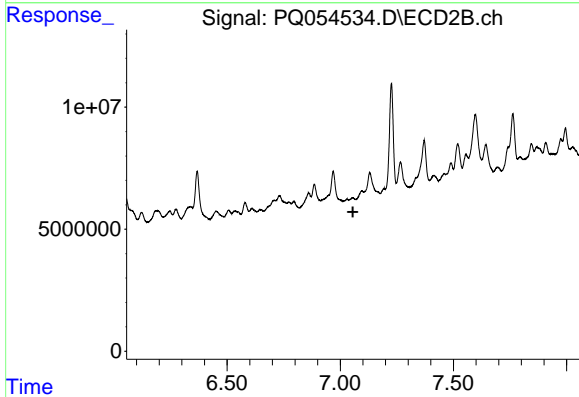
#30 AR-1254-5

R.T.: 7.597 min
 Delta R.T.: 0.011 min
 Response: 51849226
 Conc: 46.85 ng/ml

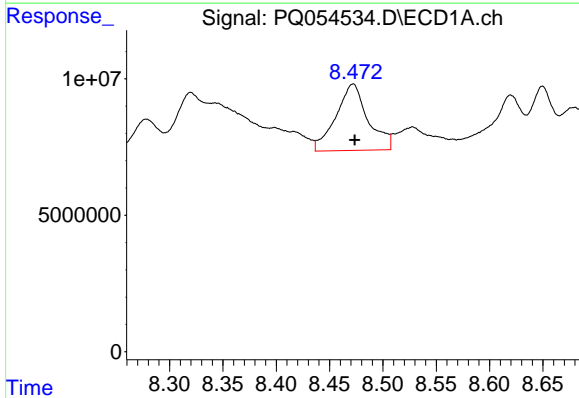


#31 AR-1260-1
 R.T.: 8.235 min
 Delta R.T.: 0.024 min
 Response: 38815959
 Conc: 39.11 ng/ml

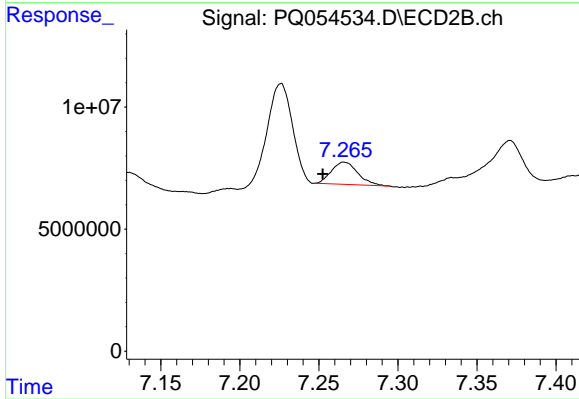
Instrument :
 ECD_Q
 ClientSampleId :



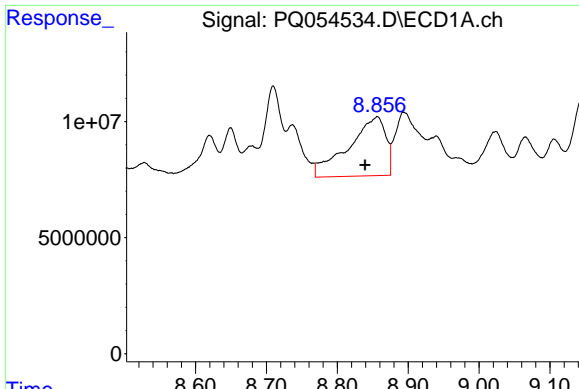
#31 AR-1260-1
 R.T.: 0.000 min
 Exp R.T. : 7.056 min
 Response: 0
 Conc: N.D.



#32 AR-1260-2
 R.T.: 8.472 min
 Delta R.T.: -0.001 min
 Response: 51047555
 Conc: 43.38 ng/ml

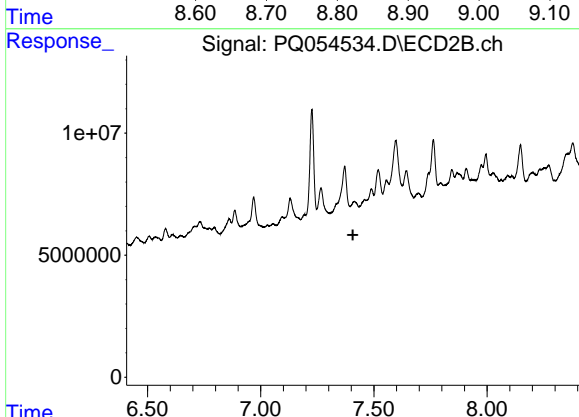


#32 AR-1260-2
 R.T.: 7.266 min
 Delta R.T.: 0.014 min
 Response: 9812806
 Conc: 9.48 ng/ml

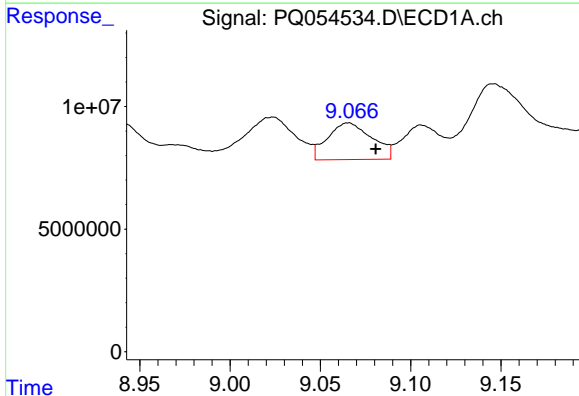


#33 AR-1260-3
 R.T.: 8.857 min
 Delta R.T.: 0.017 min
 Response: 92370434
 Conc: 120.61 ng/ml

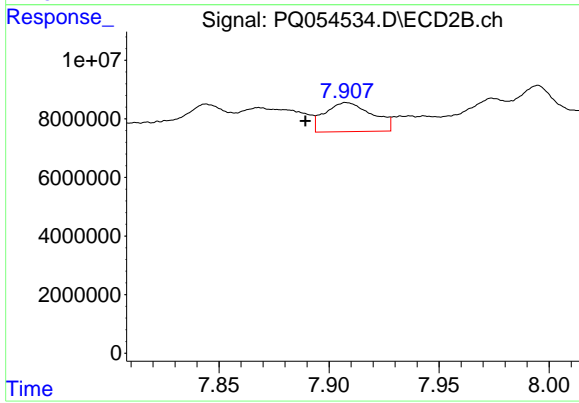
Instrument :
 ECD_Q
 ClientSampleId :



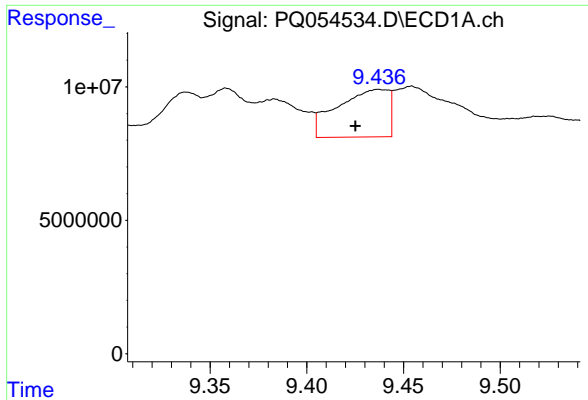
#33 AR-1260-3
 R.T.: 0.000 min
 Exp R.T. : 7.407 min
 Response: 0
 Conc: N.D.



#34 AR-1260-4
 R.T.: 9.065 min
 Delta R.T.: -0.015 min
 Response: 25497229
 Conc: 27.30 ng/ml



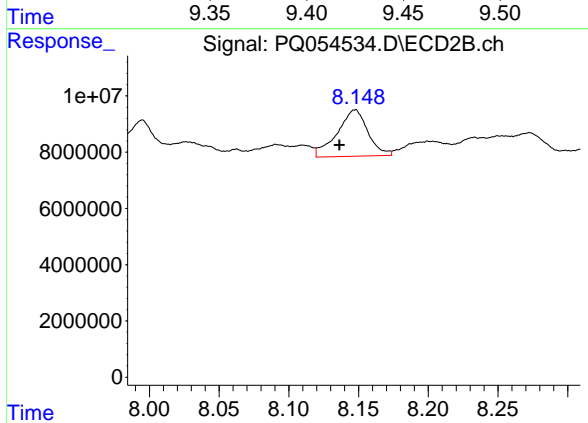
#34 AR-1260-4
 R.T.: 7.908 min
 Delta R.T.: 0.019 min
 Response: 14864746
 Conc: 21.48 ng/ml



#35 AR-1260-5

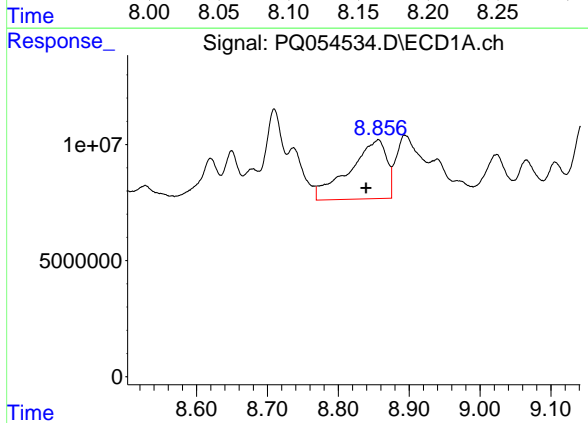
R.T.: 9.437 min
 Delta R.T.: 0.012 min
 Response: 32958760
 Conc: 17.88 ng/ml

Instrument :
 ECD_Q
 ClientSampleId :



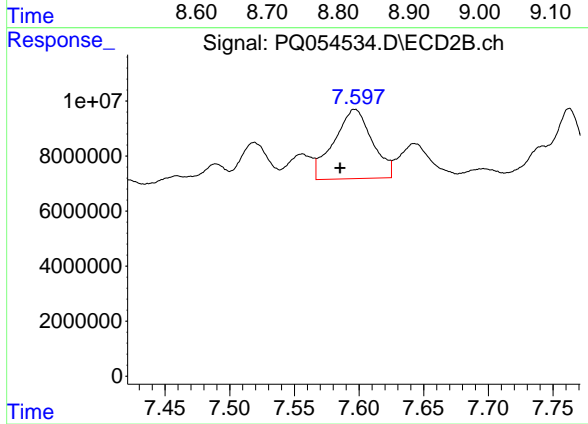
#35 AR-1260-5

R.T.: 8.148 min
 Delta R.T.: 0.011 min
 Response: 25343161
 Conc: 13.26 ng/ml



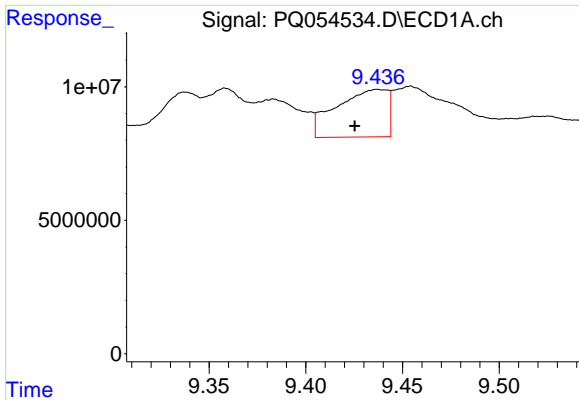
#36 AR-1262-1

R.T.: 8.857 min
 Delta R.T.: 0.017 min
 Response: 92370434
 Conc: 78.61 ng/ml



#36 AR-1262-1

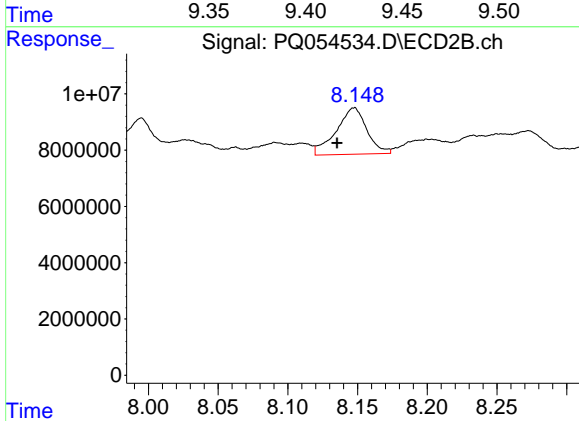
R.T.: 7.597 min
 Delta R.T.: 0.012 min
 Response: 51849226
 Conc: 100.35 ng/ml



#37 AR-1262-2

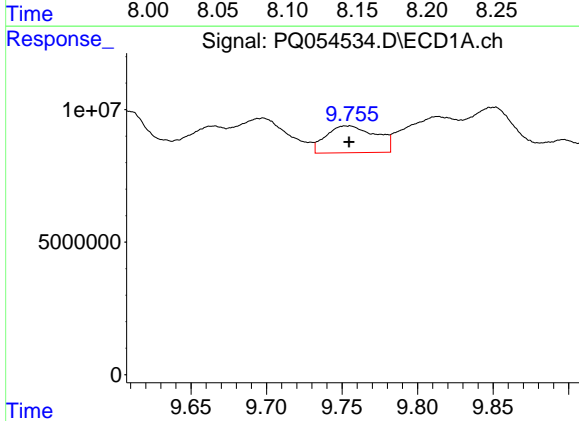
R.T.: 9.437 min
 Delta R.T.: 0.012 min
 Response: 32958760
 Conc: 15.20 ng/ml

Instrument :
 ECD_Q
 ClientSampleId :



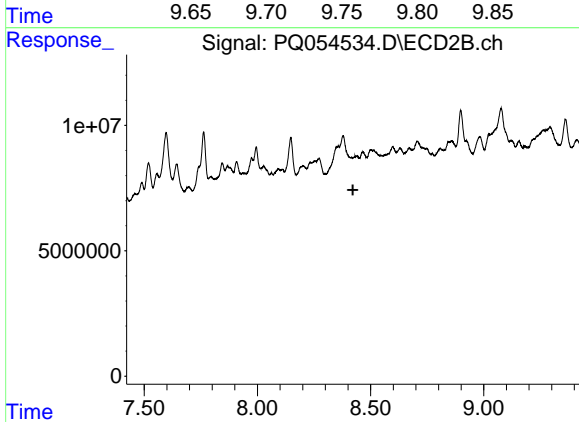
#37 AR-1262-2

R.T.: 8.148 min
 Delta R.T.: 0.012 min
 Response: 25343161
 Conc: 11.44 ng/ml



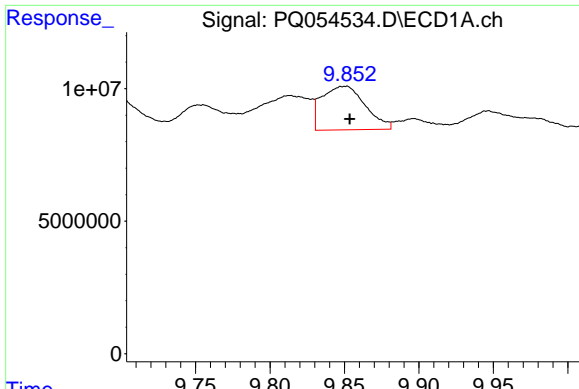
#38 AR-1262-3

R.T.: 9.754 min
 Delta R.T.: 0.000 min
 Response: 23280358
 Conc: 26.14 ng/ml



#38 AR-1262-3

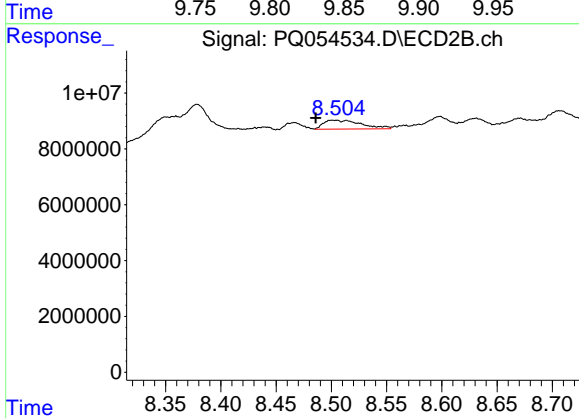
R.T.: 0.000 min
 Exp R.T.: 8.422 min
 Response: 0
 Conc: N.D.



#39 AR-1262-4

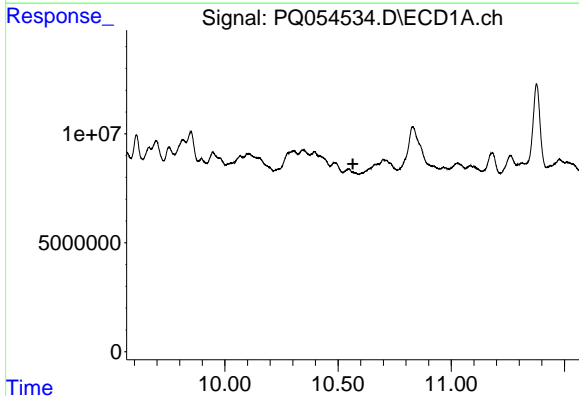
R.T.: 9.851 min
 Delta R.T.: -0.003 min
 Response: 33378532
 Conc: 59.17 ng/ml

Instrument :
 ECD_Q
 ClientSampleId :



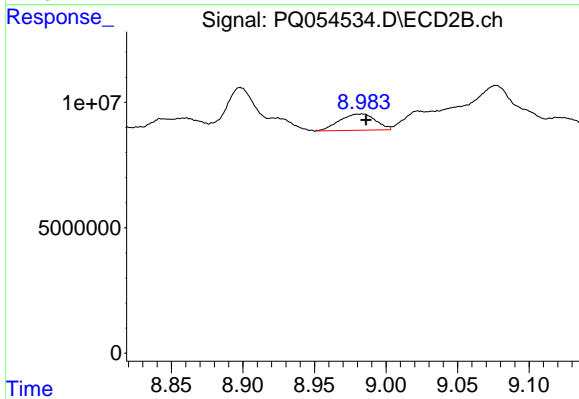
#39 AR-1262-4

R.T.: 8.501 min
 Delta R.T.: 0.015 min
 Response: 7621907
 Conc: 5.01 ng/ml



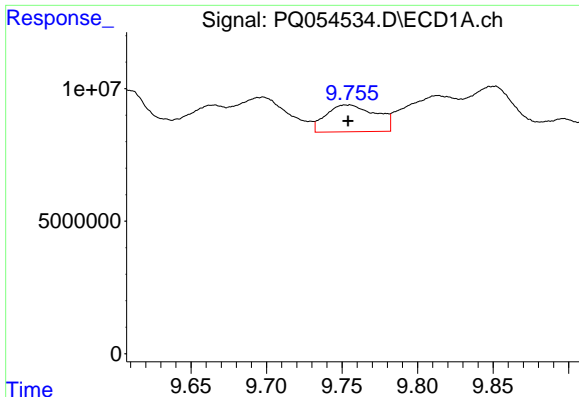
#40 AR-1262-5

R.T.: 0.000 min
 Exp R.T. : 10.565 min
 Response: 0
 Conc: N.D.



#40 AR-1262-5

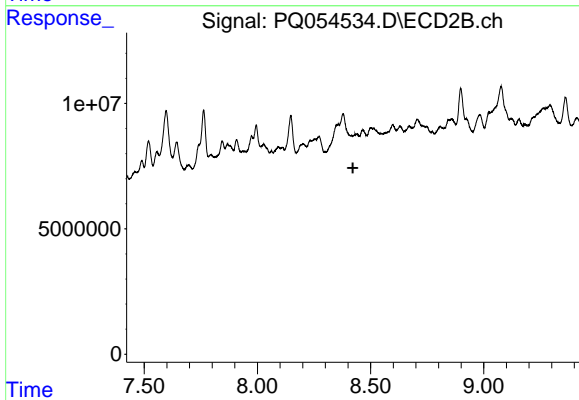
R.T.: 8.983 min
 Delta R.T.: -0.003 min
 Response: 11401429
 Conc: 16.60 ng/ml



#41 AR-1268-1

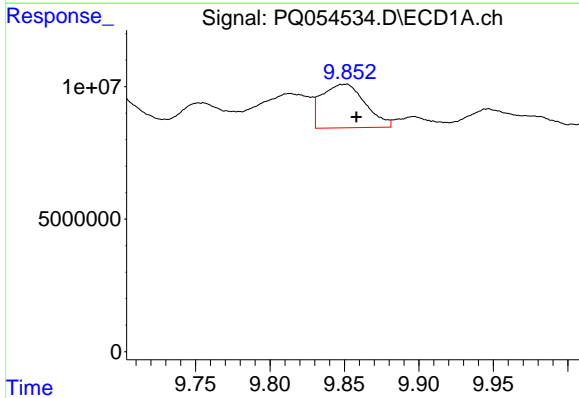
R.T.: 9.754 min
 Delta R.T.: 0.000 min
 Response: 23280358
 Conc: 9.28 ng/ml

Instrument :
 ECD_Q
 ClientSampleId :



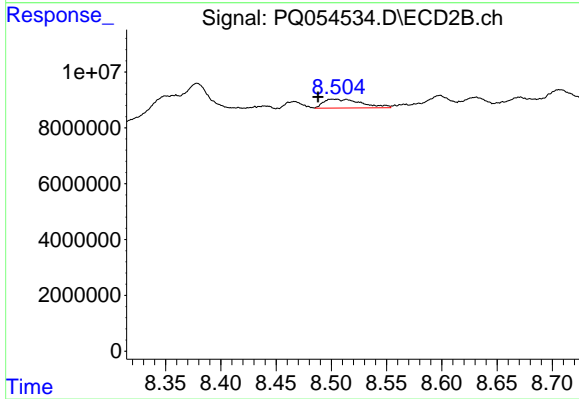
#41 AR-1268-1

R.T.: 0.000 min
 Exp R.T. : 8.422 min
 Response: 0
 Conc: N.D.



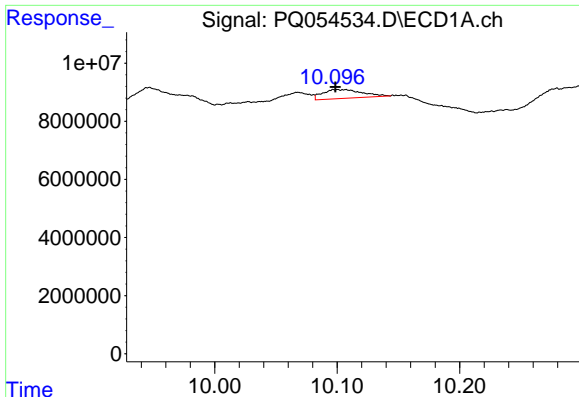
#42 AR-1268-2

R.T.: 9.851 min
 Delta R.T.: -0.007 min
 Response: 33378532
 Conc: 14.59 ng/ml



#42 AR-1268-2

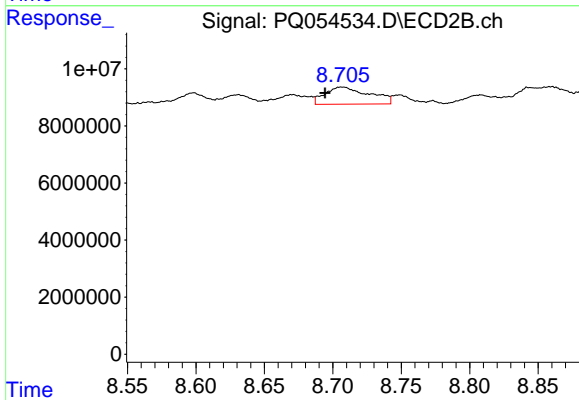
R.T.: 8.501 min
 Delta R.T.: 0.013 min
 Response: 7621907
 Conc: 3.31 ng/ml



#43 AR-1268-3

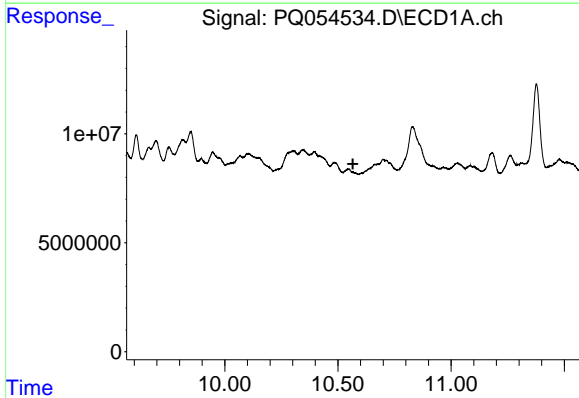
R.T.: 10.107 min
 Delta R.T.: 0.008 min
 Response: 6842316
 Conc: 3.56 ng/ml

Instrument :
 ECD_Q
 ClientSampleId :



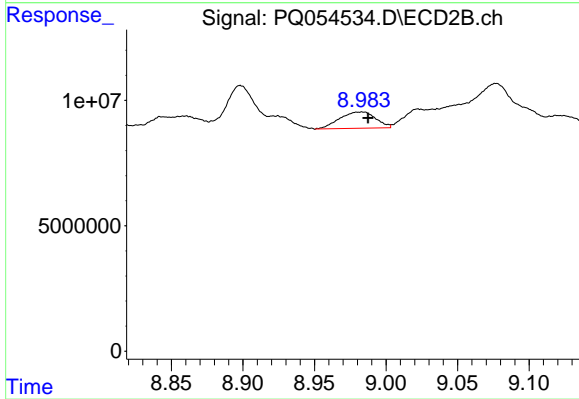
#43 AR-1268-3

R.T.: 8.707 min
 Delta R.T.: 0.012 min
 Response: 13506778
 Conc: 6.70 ng/ml



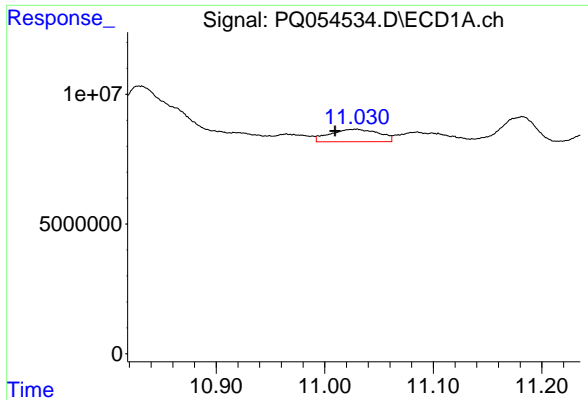
#44 AR-1268-4

R.T.: 0.000 min
 Exp R.T. : 10.566 min
 Response: 0
 Conc: N.D.



#44 AR-1268-4

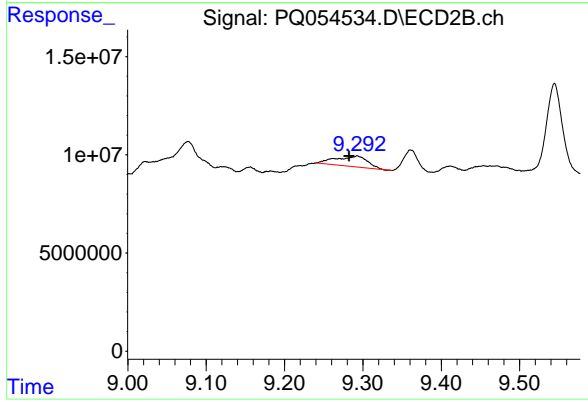
R.T.: 8.983 min
 Delta R.T.: -0.004 min
 Response: 11401429
 Conc: 14.67 ng/ml



#45 AR-1268-5

R.T.: 11.029 min
Delta R.T.: 0.020 min
Response: 14909299
Conc: 2.37 ng/ml

Instrument :
ECD_Q
ClientSampleId :



#45 AR-1268-5

R.T.: 9.293 min
Delta R.T.: 0.010 min
Response: 14847280
Conc: 2.58 ng/ml