

Data Path : Z:\pestpcbsrv\HPCHEM1\ECD\_Q\Data\PQ091721\  
 Data File : PQ054543.D  
 Signal(s) : Signal #1: ECD1A.ch Signal #2: ECD2B.ch  
 Acq On : 17 Sep 2021 16:19  
 Operator : AJ\MA  
 Sample : AR1660CCC500  
 Misc :  
 ALS Vial : 3 Sample Multiplier: 1

Instrument :  
 ECD\_Q  
 ClientSampleId :  
 AR1660CCC500

Integration File signal 1: autoint1.e  
 Integration File signal 2: autoint2.e  
 Quant Time: Sep 17 18:18:12 2021  
 Quant Method : Z:\pestpcbsrv\HPCHEM1\ECD\_Q\Method\PQ091421.M  
 Quant Title : GC EXTRACTABLES  
 QLast Update : Wed Sep 15 05:25:53 2021  
 Response via : Initial Calibration  
 Integrator: ChemStation

Volume Inj. : 2 µl  
 Signal #1 Phase : ZB-MR2 Signal #2 Phase: ZB-MR2  
 Signal #1 Info : 30Mx0.32mmx 0.50µ Signal #2 Info : 30M x 0.32mm x 0.25µm

Compound	RT#1	RT#2	Resp#1	Resp#2	ng/ml	ng/ml
-----						
System Monitoring Compounds						
1) SA Tetrachlo...	5.204	4.209	1414.5E6	775.8E6	59.230	58.686
2) SA Decachlor...	11.371	9.537	901.0E6	730.7E6	53.384	53.922
Target Compounds						
3) L1 AR-1016-1	6.528	5.468	439.2E6	256.0E6	532.414	563.968
4) L1 AR-1016-2	6.551	5.487	695.8E6	404.6E6	570.436	570.167
5) L1 AR-1016-3	6.618	5.681	429.6E6	201.1E6	567.397	587.089
6) L1 AR-1016-4	6.727	5.730	349.7E6	155.4E6	565.553	559.405
7) L1 AR-1016-5	7.038	5.962	320.7E6	143.4E6	564.491	415.541 #
31) L7 AR-1260-1	8.211	7.054	564.5E6	428.6E6	568.848	570.712
32) L7 AR-1260-2	8.475	7.250	659.5E6	604.3E6	560.492	583.956
33) L7 AR-1260-3	8.840	7.406	401.5E6	510.6E6	524.203	577.491
34) L7 AR-1260-4	9.083	7.887	479.5E6	386.6E6	513.361	558.721
35) L7 AR-1260-5	9.427	8.135	954.5E6	1102.6E6	517.748	576.848
-----						

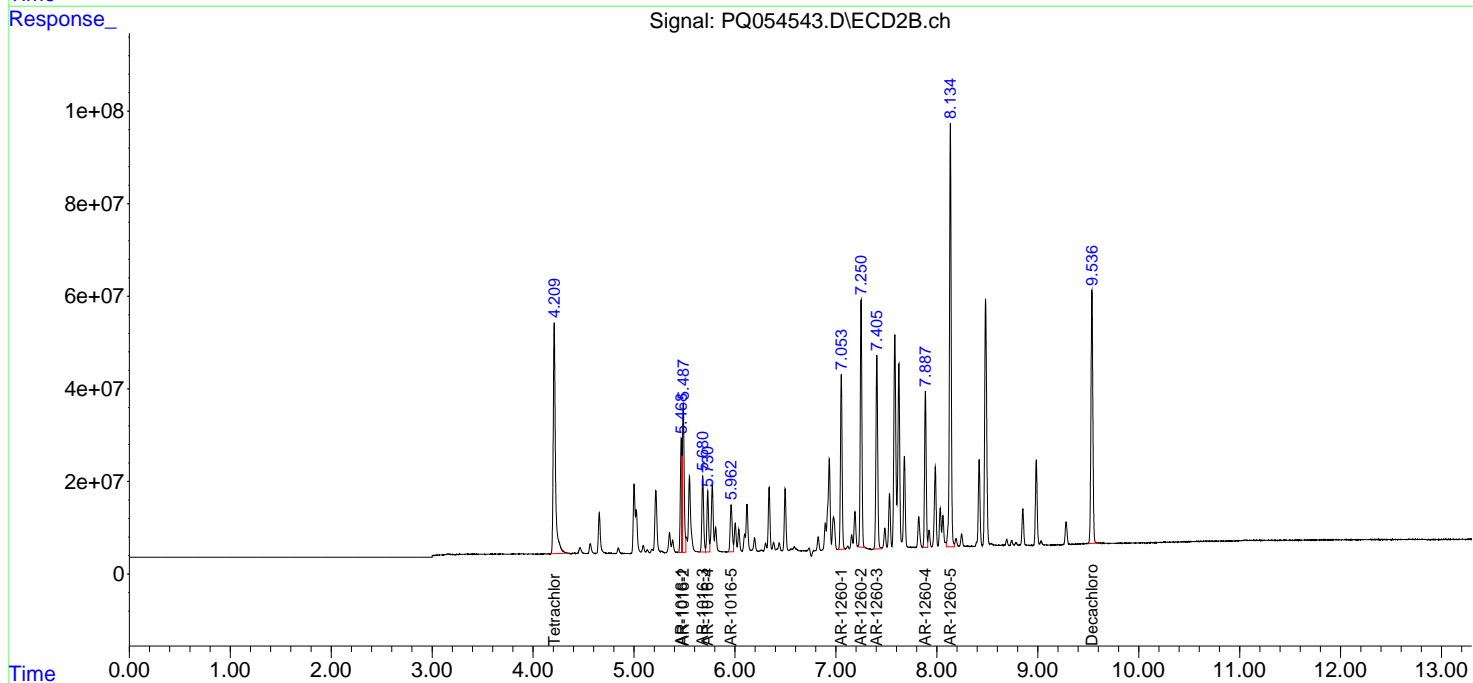
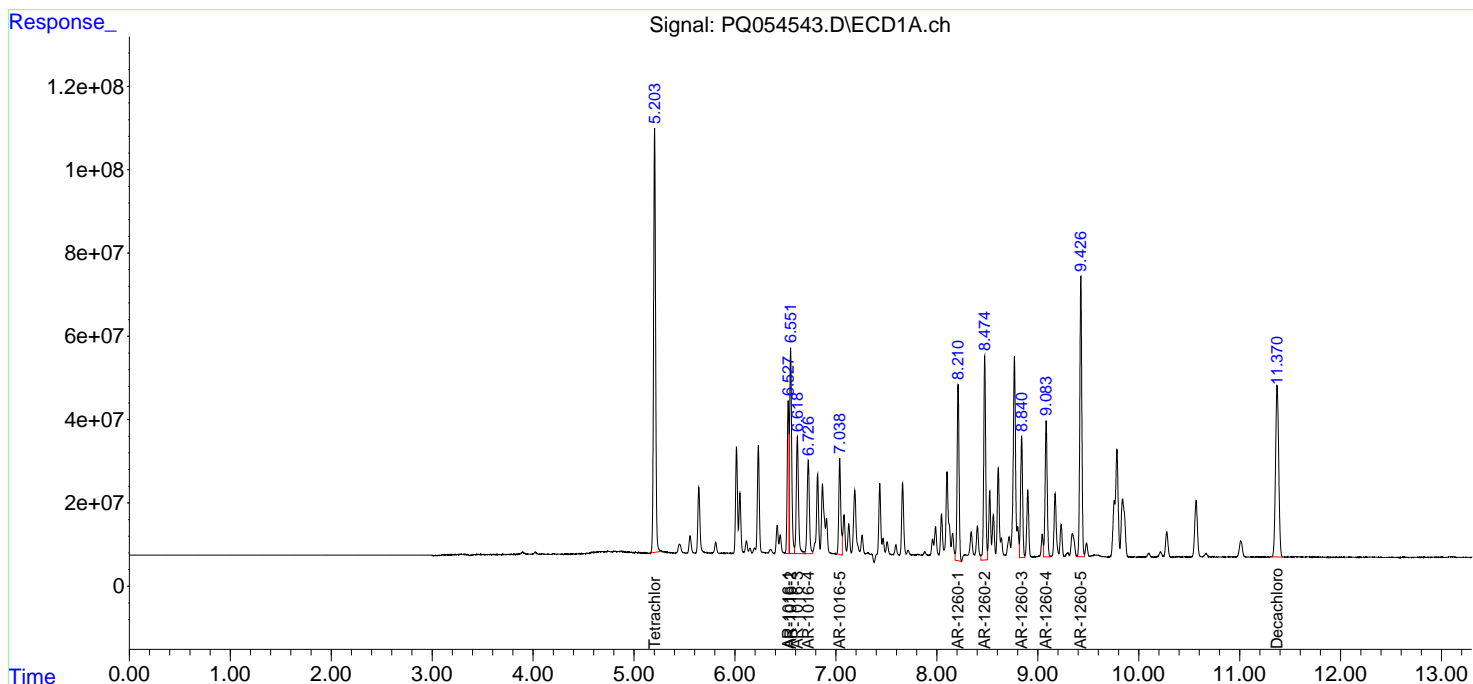
(f)=RT Delta > 1/2 Window (#)=Amounts differ by > 25% (m)=manual int.

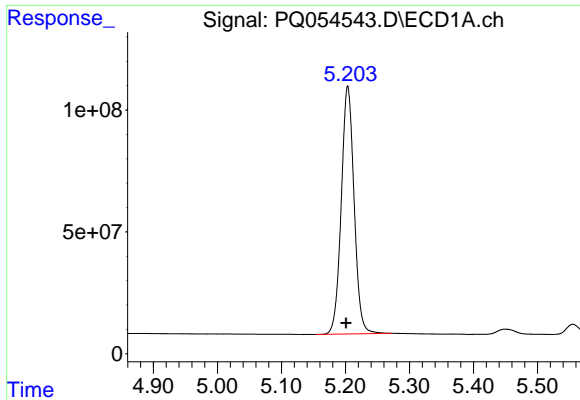
Data Path : Z:\pestpcbsrv\HPCHEM1\ECD\_Q\Data\PQ091721\  
 Data File : PQ054543.D  
 Signal(s) : Signal #1: ECD1A.ch Signal #2: ECD2B.ch  
 Acq On : 17 Sep 2021 16:19  
 Operator : AJ\MA  
 Sample : AR1660CCC500  
 Misc :  
 ALS Vial : 3 Sample Multiplier: 1

Instrument :  
 ECD\_Q  
 ClientSampled :  
 AR1660CCC500

Integration File signal 1: autoint1.e  
 Integration File signal 2: autoint2.e  
 Quant Time: Sep 17 18:18:12 2021  
 Quant Method : Z:\pestpcbsrv\HPCHEM1\ECD\_Q\Method\PQ091421.M  
 Quant Title : GC EXTRACTABLES  
 QLast Update : Wed Sep 15 05:25:53 2021  
 Response via : Initial Calibration  
 Integrator: ChemStation

Volume Inj. : 2 µl  
 Signal #1 Phase : ZB-MR1 Signal #2 Phase: ZB-MR2  
 Signal #1 Info : 30Mx0.32mmx 0.50µ Signal #2 Info : 30M x 0.32mm x 0.25µm

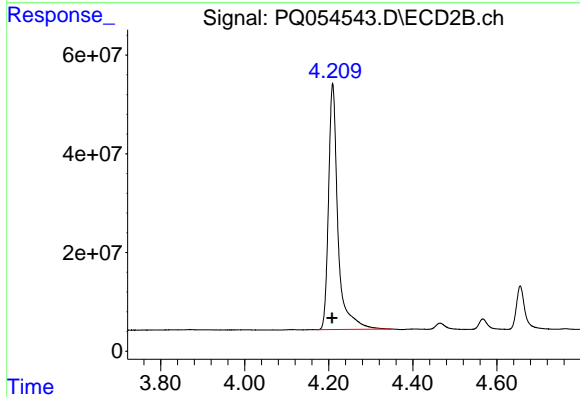




#1 Tetrachloro-m-xylene

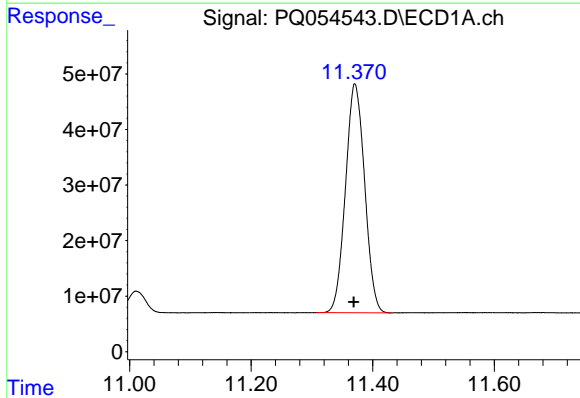
R.T.: 5.204 min  
 Delta R.T.: 0.003 min  
 Response: 1414489669  
 Conc: 59.23 ng/ml

Instrument :  
 ECD\_Q  
 ClientSampleId :  
 AR1660CCC500



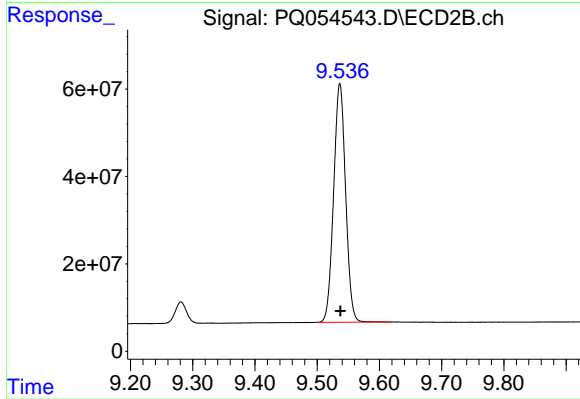
#1 Tetrachloro-m-xylene

R.T.: 4.209 min  
 Delta R.T.: 0.001 min  
 Response: 775813171  
 Conc: 58.69 ng/ml



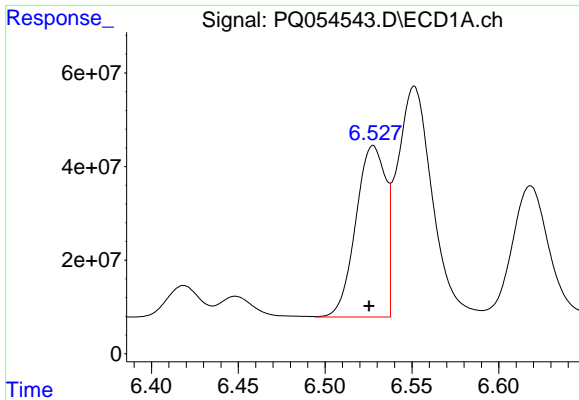
#2 Decachlorobiphenyl

R.T.: 11.371 min  
 Delta R.T.: 0.002 min  
 Response: 901026577  
 Conc: 53.38 ng/ml



#2 Decachlorobiphenyl

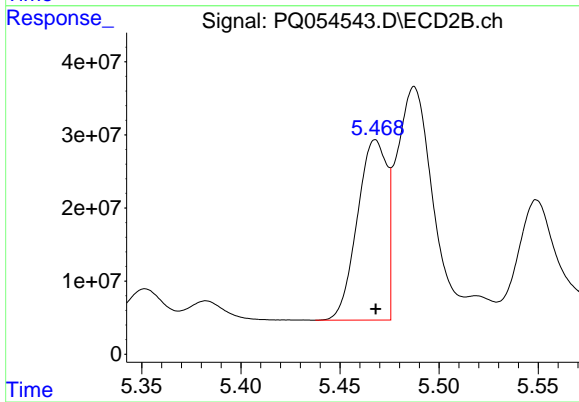
R.T.: 9.537 min  
 Delta R.T.: -0.001 min  
 Response: 730748925  
 Conc: 53.92 ng/ml



#3 AR-1016-1

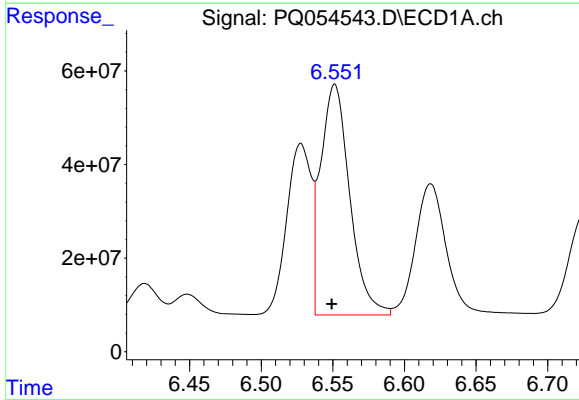
R.T.: 6.528 min  
Delta R.T.: 0.002 min  
Response: 439169561  
Conc: 532.41 ng/ml

Instrument :  
ECD\_Q  
ClientSampleId :  
AR1660CCC500



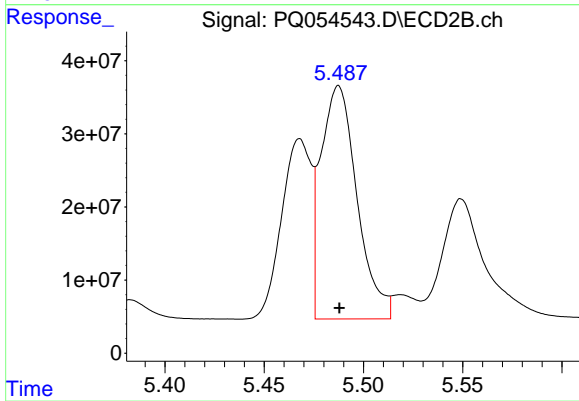
#3 AR-1016-1

R.T.: 5.468 min  
Delta R.T.: 0.000 min  
Response: 255952803  
Conc: 563.97 ng/ml



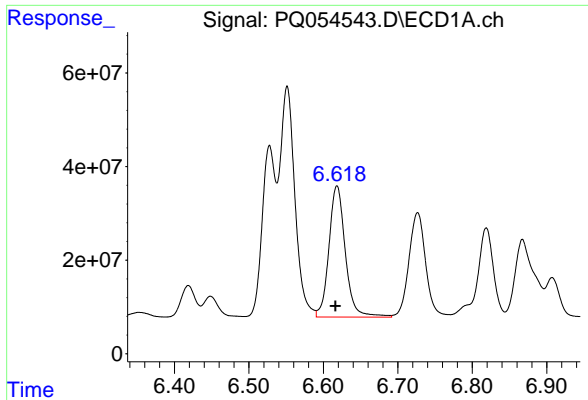
#4 AR-1016-2

R.T.: 6.551 min  
Delta R.T.: 0.002 min  
Response: 695837375  
Conc: 570.44 ng/ml



#4 AR-1016-2

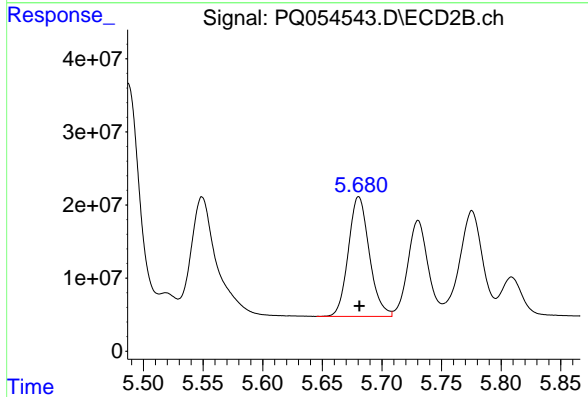
R.T.: 5.487 min  
Delta R.T.: 0.000 min  
Response: 404635314  
Conc: 570.17 ng/ml



#5 AR-1016-3

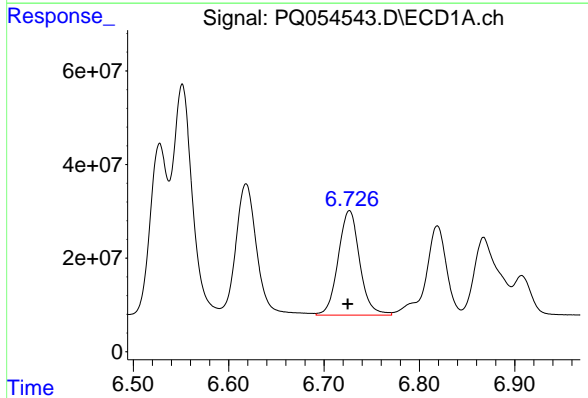
R.T.: 6.618 min  
 Delta R.T.: 0.002 min  
 Response: 429559542  
 Conc: 567.40 ng/ml

Instrument :  
 ECD\_Q  
 ClientSampleId :  
 AR1660CCC500



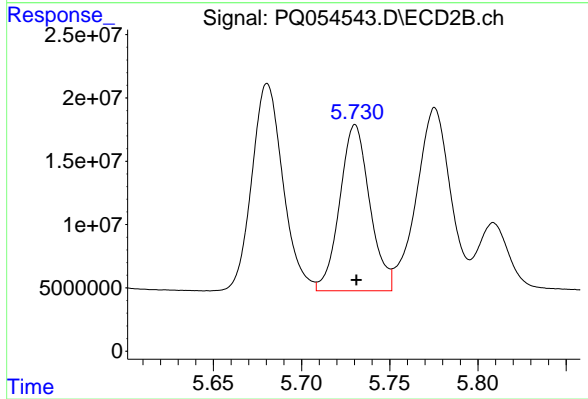
#5 AR-1016-3

R.T.: 5.681 min  
 Delta R.T.: 0.000 min  
 Response: 201063019  
 Conc: 587.09 ng/ml



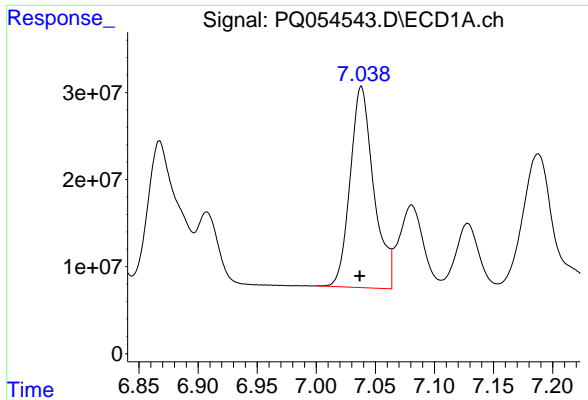
#6 AR-1016-4

R.T.: 6.727 min  
 Delta R.T.: 0.002 min  
 Response: 349687025  
 Conc: 565.55 ng/ml



#6 AR-1016-4

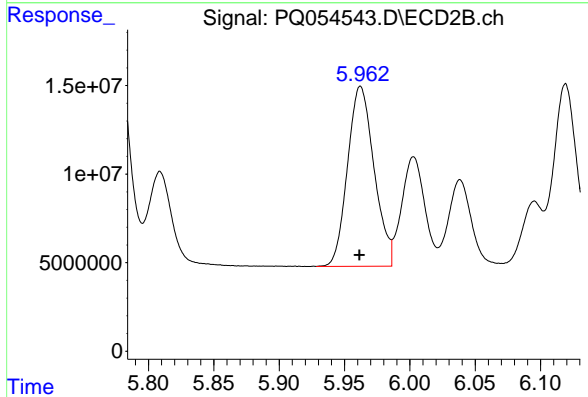
R.T.: 5.730 min  
 Delta R.T.: 0.000 min  
 Response: 155374183  
 Conc: 559.41 ng/ml



#7 AR-1016-5

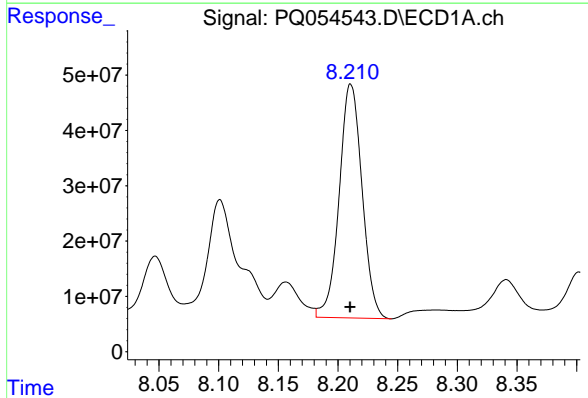
R.T.: 7.038 min  
 Delta R.T.: 0.001 min  
 Response: 320708698  
 Conc: 564.49 ng/ml

Instrument :  
 ECD\_Q  
 ClientSampled :  
 AR1660CCC500



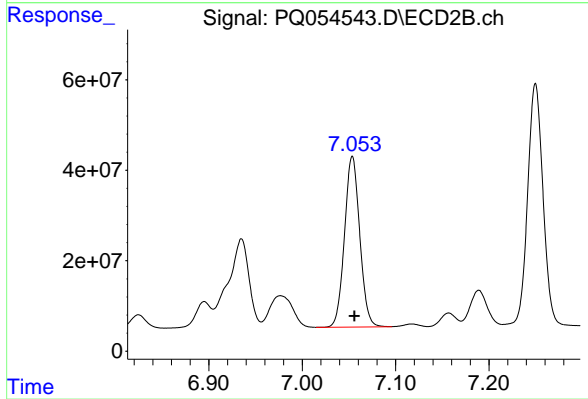
#7 AR-1016-5

R.T.: 5.962 min  
 Delta R.T.: 0.000 min  
 Response: 143434747  
 Conc: 415.54 ng/ml



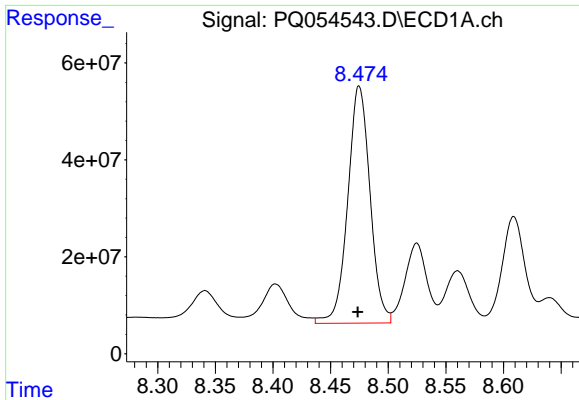
#31 AR-1260-1

R.T.: 8.211 min  
 Delta R.T.: 0.000 min  
 Response: 564520788  
 Conc: 568.85 ng/ml



#31 AR-1260-1

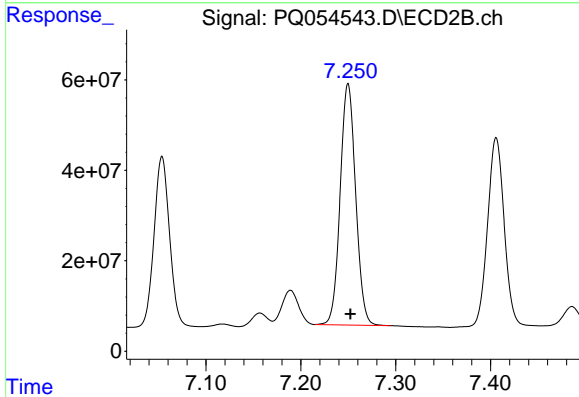
R.T.: 7.054 min  
 Delta R.T.: -0.002 min  
 Response: 428590762  
 Conc: 570.71 ng/ml



#32 AR-1260-2

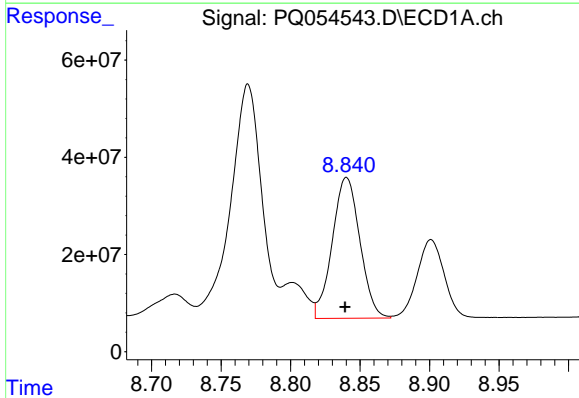
R.T.: 8.475 min  
 Delta R.T.: 0.001 min  
 Response: 659536258  
 Conc: 560.49 ng/ml

Instrument :  
 ECD\_Q  
 ClientSampleId :  
 AR1660CCC500



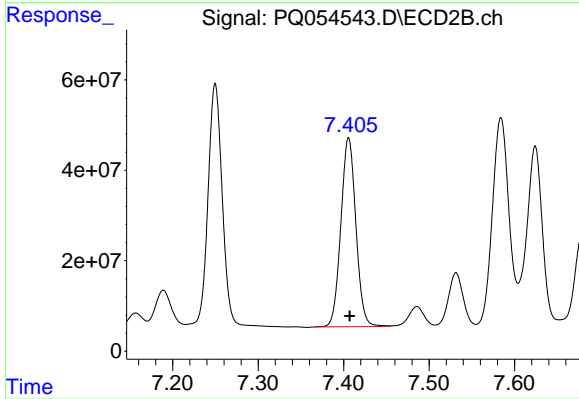
#32 AR-1260-2

R.T.: 7.250 min  
 Delta R.T.: -0.003 min  
 Response: 604336626  
 Conc: 583.96 ng/ml



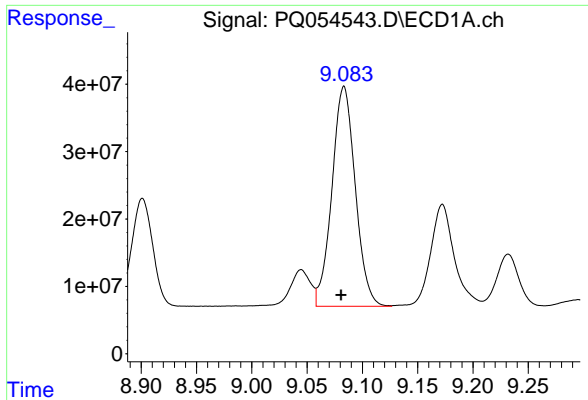
#33 AR-1260-3

R.T.: 8.840 min  
 Delta R.T.: 0.000 min  
 Response: 401480406  
 Conc: 524.20 ng/ml



#33 AR-1260-3

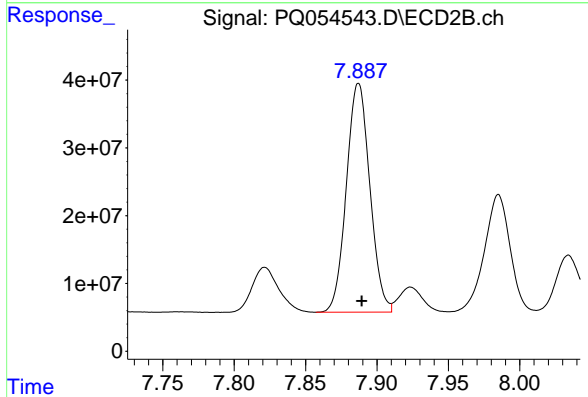
R.T.: 7.406 min  
 Delta R.T.: -0.001 min  
 Response: 510588353  
 Conc: 577.49 ng/ml



#34 AR-1260-4

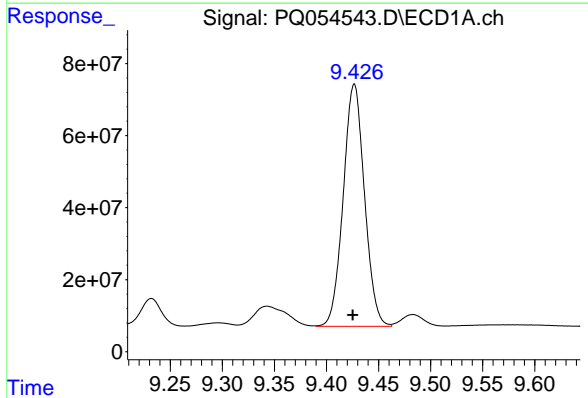
R.T.: 9.083 min  
 Delta R.T.: 0.003 min  
 Response: 479525438  
 Conc: 513.36 ng/ml

Instrument :  
 ECD\_Q  
 ClientSampleId :  
 AR1660CCC500



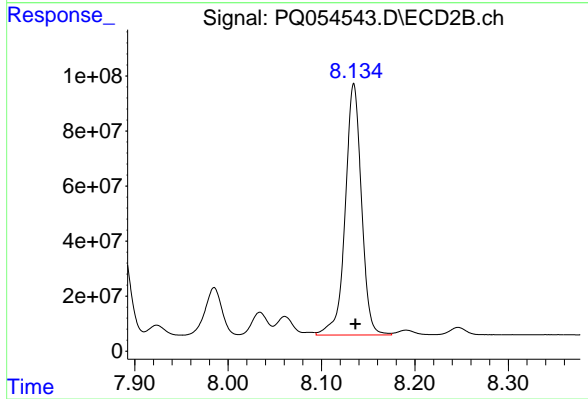
#34 AR-1260-4

R.T.: 7.887 min  
 Delta R.T.: -0.002 min  
 Response: 386617559  
 Conc: 558.72 ng/ml



#35 AR-1260-5

R.T.: 9.427 min  
 Delta R.T.: 0.002 min  
 Response: 954482589  
 Conc: 517.75 ng/ml



#35 AR-1260-5

R.T.: 8.135 min  
 Delta R.T.: -0.002 min  
 Response: 1102558141  
 Conc: 576.85 ng/ml