

Data Path : Z:\pestpcbsrv\HPCHEM1\ECD_Q\Data\PQ091724\
 Data File : PQ068664.D
 Signal(s) : Signal #1: ECD1A.ch Signal #2: ECD2B.ch
 Acq On : 17 Sep 2024 12:20
 Operator : YP\AJ
 Sample : P3997-11
 Misc :
 ALS Vial : 42 Sample Multiplier: 1

Instrument :
 ECD_Q
 ClientSampleId :
 COAS3

Integration File signal 1: autoint1.e
 Integration File signal 2: autoint2.e
 Quant Time: Sep 18 01:26:50 2024
 Quant Method : Z:\pestpcbsrv\HPCHEM1\ECD_Q\Method\PQ082724CLP.M
 Quant Title : GC EXTRACTABLES
 QLast Update : Wed Aug 28 02:08:25 2024
 Response via : Initial Calibration
 Integrator: ChemStation

Volume Inj. : 1 µl
 Signal #1 Phase : ZB MR2 Signal #2 Phase: ZB MR2
 Signal #1 Info : 30Mx0.32mmx 0.5µm Signal #2 Info : 30M x 0.32mm x 0.25µm

Compound	RT#1	RT#2	Resp#1	Resp#2	ng/ml	ng/ml

System Monitoring Compounds						
1) SA Tetrachlo...	3.438	2.820	151.6E6	152.8E6	19.188	21.577
2) SA Decachlor...	8.612	7.596	80323409	126.3E6	35.316	37.330
Target Compounds						
3) L1 AR-1016-1	4.504	0.000	7108684	0	31.452	N.D. #
4) L1 AR-1016-2	4.598f	0.000	2201120	0	6.254	N.D. #
5) L1 AR-1016-3	4.628	0.000	1135668	0	5.218	N.D. #
6) L1 AR-1016-4	4.714	0.000	350447	0	1.937	N.D. #
7) L1 AR-1016-5	5.015	4.202f	2360077	2003718	13.580	10.880
8) L2 AR-1221-1	3.571f	3.090f	848498	1641196	9.241	19.208 #
9) L2 AR-1221-2	3.717	3.090	3754056	1641196	58.803	27.533 #
10) L2 AR-1221-3	3.773	0.000	1785074	0	8.643	N.D. #
11) L3 AR-1232-1	3.773	0.000	1785074	0	10.814	N.D. #
12) L3 AR-1232-2	4.268	0.000	887944	0	9.776	N.D. #
13) L3 AR-1232-3	4.598f	0.000	2201120	0	13.016	N.D. #
14) L3 AR-1232-4	4.714	0.000	350447	0	4.056	N.D. #
15) L3 AR-1232-5	4.767f	4.202f	1889284	2003718	33.456	25.491
16) L4 AR-1242-1	4.504	0.000	7108684	0	34.778	N.D. #
17) L4 AR-1242-2	4.598f	0.000	2201120	0	7.035	N.D. #
18) L4 AR-1242-3	4.628	0.000	1135668	0	5.804	N.D. #
19) L4 AR-1242-4	4.714	0.000	350447	0	2.168	N.D. #
21) L5 AR-1248-1	4.504	0.000	7108684	0	46.173	N.D. #
22) L5 AR-1248-2	4.767f	0.000	1889284	0	8.990	N.D. #
23) L5 AR-1248-3	5.015	0.000	2360077	0	9.354	N.D. #
24) L5 AR-1248-4	0.000	4.202f	0	2003718	N.D.	7.587 #
31) L7 AR-1260-1	0.000	5.245	0	2432923	N.D.	6.689 #
35) L7 AR-1260-5	7.193f	0.000	3892602	0	6.670	N.D. #
37) L8 AR-1262-2	7.193f	0.000	3892602	0	5.699	N.D. #
38) L8 AR-1262-3	7.536	0.000	1274025	0	2.878	N.D. #
39) L8 AR-1262-4	7.536f	0.000	1274025	0	3.719	N.D. #
41) L9 AR-1268-1	7.536	0.000	1274025	0	1.658	N.D. #
42) L9 AR-1268-2	7.536f	0.000	1274025	0	1.775	N.D. #
43) L9 AR-1268-3	7.766	0.000	257336	0	0.445	N.D. #
45) L9 AR-1268-5	8.380	0.000	969524	0	0.596	N.D. #

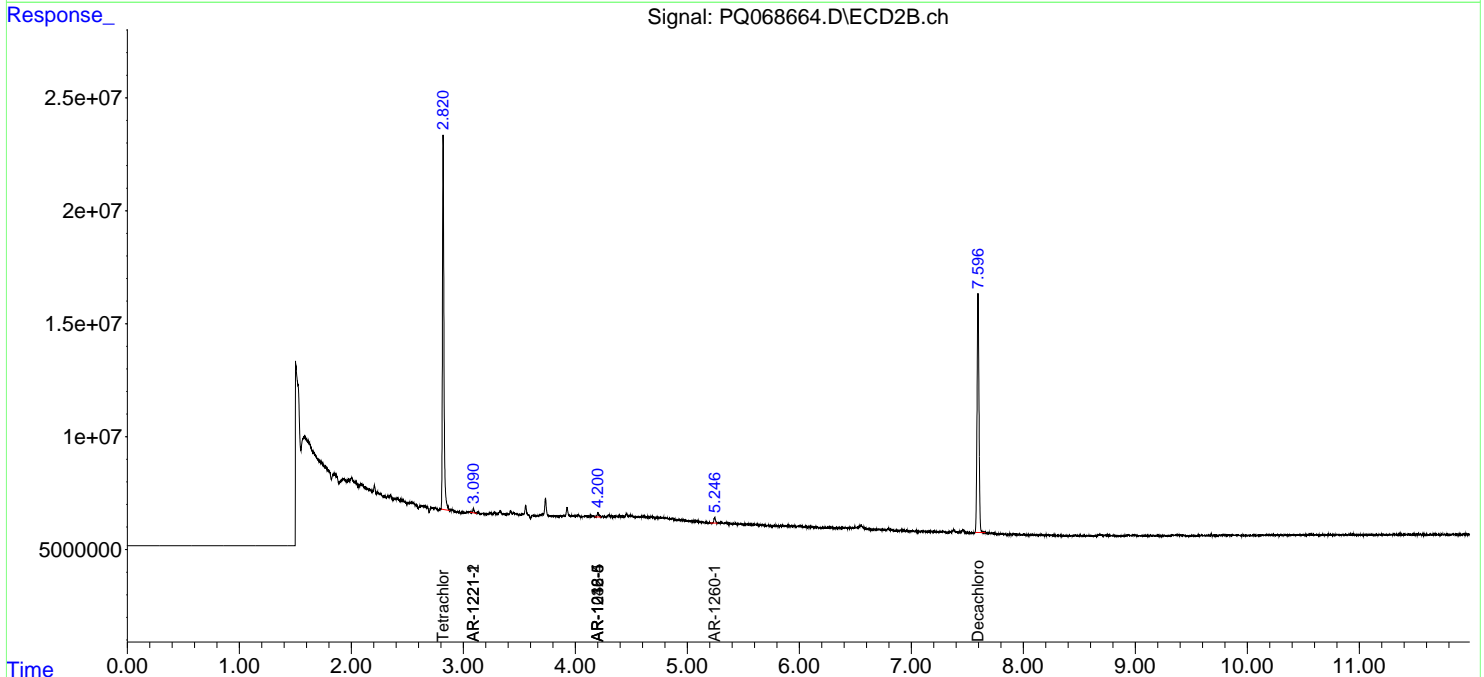
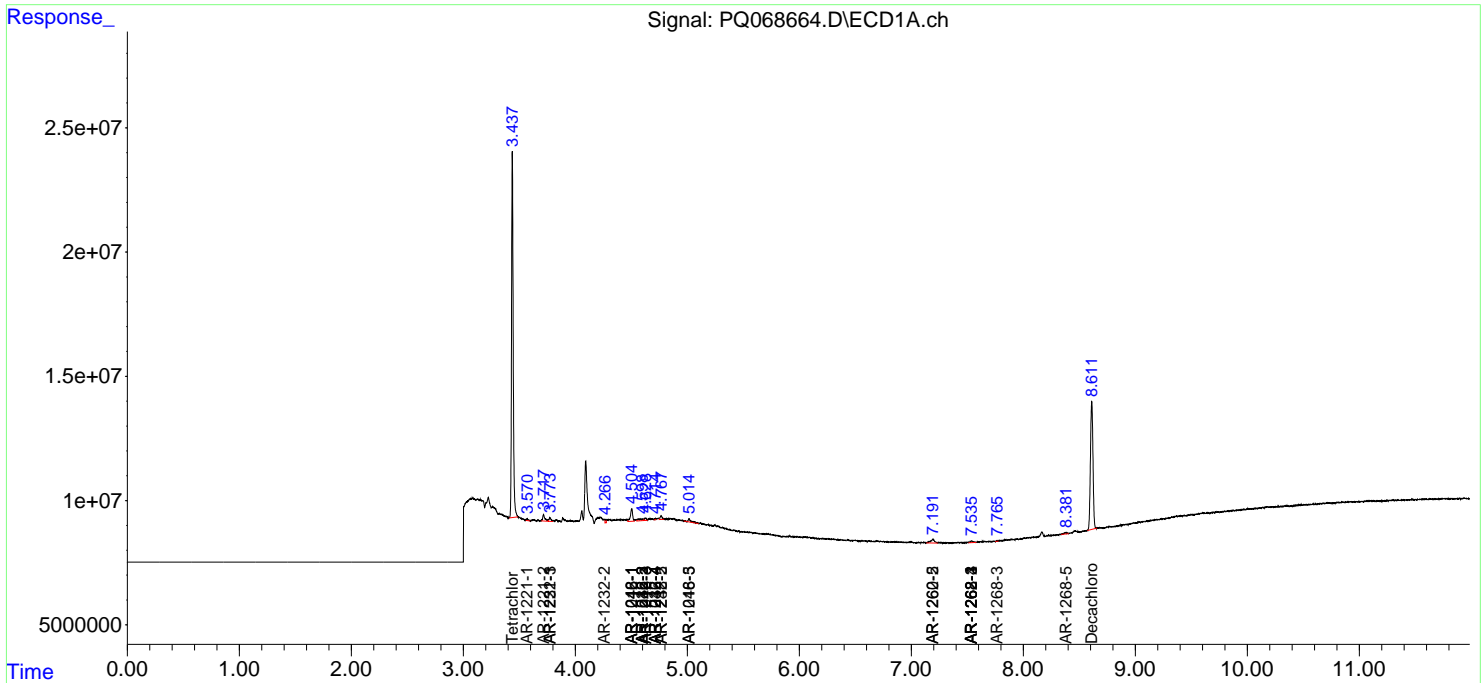
(f)=RT Delta > 1/2 Window (#)=Amounts differ by > 25% (m)=manual int.

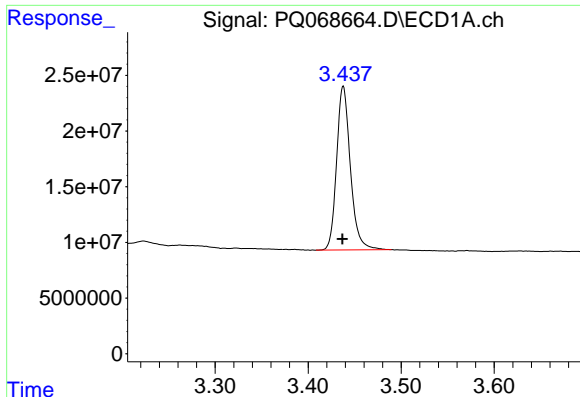
Data Path : Z:\pestpcbsrv\HPCHEM1\ECD_Q\Data\PQ091724\
 Data File : PQ068664.D
 Signal(s) : Signal #1: ECD1A.ch Signal #2: ECD2B.ch
 Acq On : 17 Sep 2024 12:20
 Operator : YP\AJ
 Sample : P3997-11
 Misc :
 ALS Vial : 42 Sample Multiplier: 1

Instrument :
 ECD_Q
 ClientSampleId :
 C0AS3

Integration File signal 1: autoint1.e
 Integration File signal 2: autoint2.e
 Quant Time: Sep 18 01:26:50 2024
 Quant Method : Z:\pestpcbsrv\HPCHEM1\ECD_Q\Method\PQ082724CLP.M
 Quant Title : GC EXTRACTABLES
 QLast Update : Wed Aug 28 02:08:25 2024
 Response via : Initial Calibration
 Integrator: ChemStation

Volume Inj. : 1 µl
 Signal #1 Phase : ZB MR1 Signal #2 Phase: ZB MR2
 Signal #1 Info : 30Mx0.32mmx 0.5µm Signal #2 Info : 30M x 0.32mm x 0.25µm

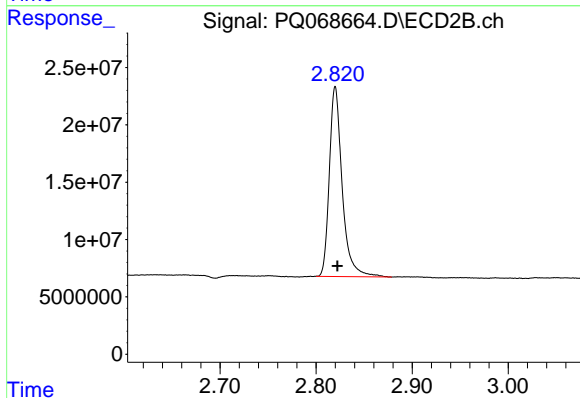




#1 Tetrachloro-m-xylene

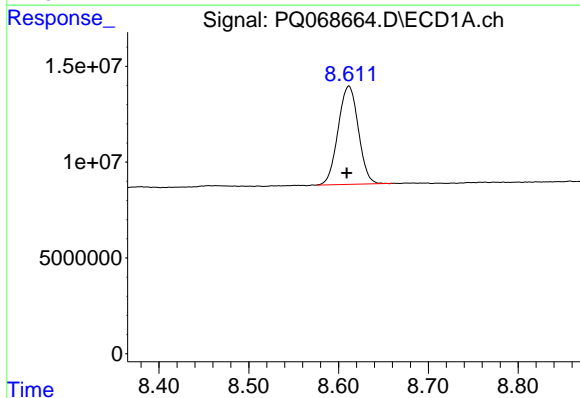
R.T.: 3.438 min
 Delta R.T.: 0.000 min
 Response: 151594974
 Conc: 19.19 ng/ml

Instrument :
 ECD_Q
 ClientSampleId :
 C0AS3



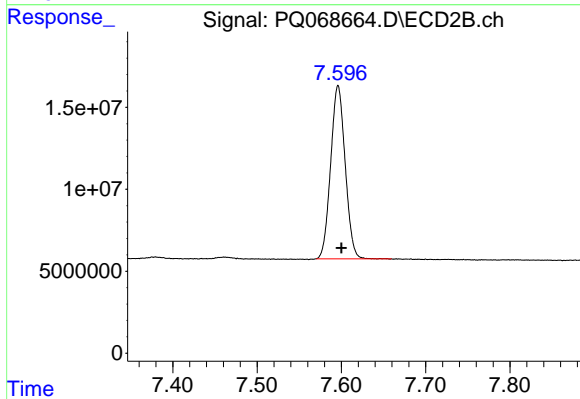
#1 Tetrachloro-m-xylene

R.T.: 2.820 min
 Delta R.T.: -0.002 min
 Response: 152821597
 Conc: 21.58 ng/ml



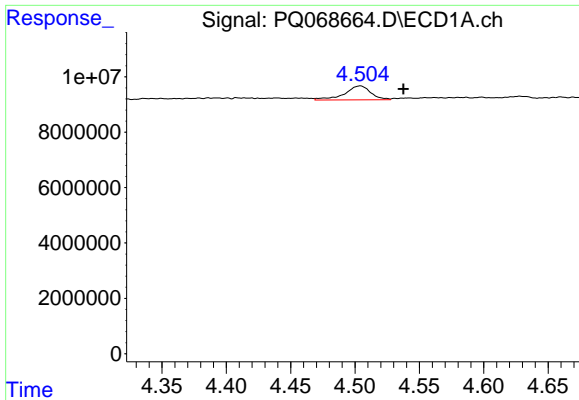
#2 Decachlorobiphenyl

R.T.: 8.612 min
 Delta R.T.: 0.003 min
 Response: 80323409
 Conc: 35.32 ng/ml



#2 Decachlorobiphenyl

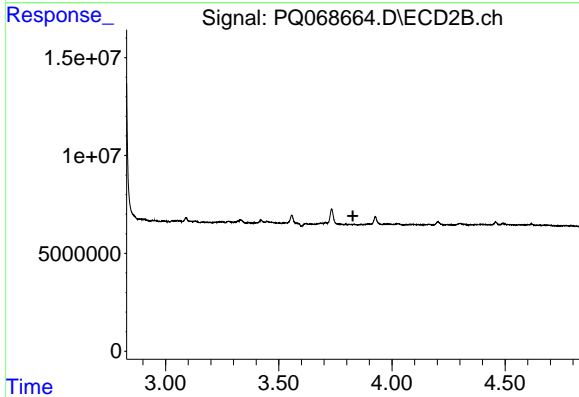
R.T.: 7.596 min
 Delta R.T.: -0.004 min
 Response: 126253123
 Conc: 37.33 ng/ml



#3 AR-1016-1

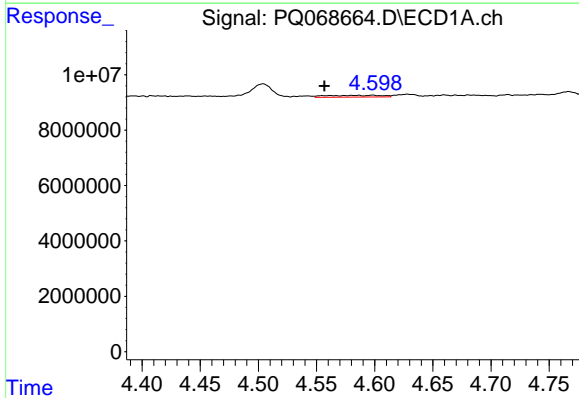
R.T.: 4.504 min
 Delta R.T.: -0.034 min
 Response: 7108684
 Conc: 31.45 ng/ml

Instrument :
 ECD_Q
 ClientSampleId :
 C0AS3



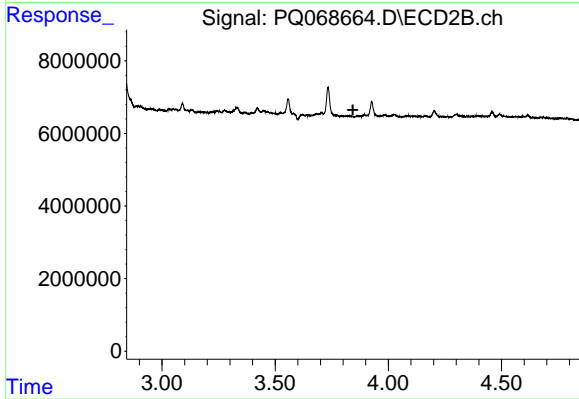
#3 AR-1016-1

R.T.: 0.000 min
 Exp R.T. : 3.828 min
 Response: 0
 Conc: N.D.



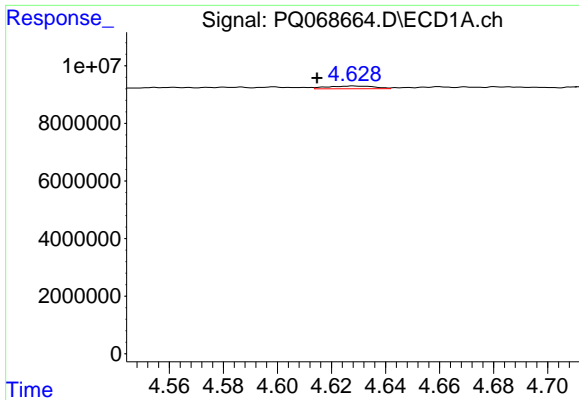
#4 AR-1016-2

R.T.: 4.598 min
 Delta R.T.: 0.042 min
 Response: 2201120
 Conc: 6.25 ng/ml



#4 AR-1016-2

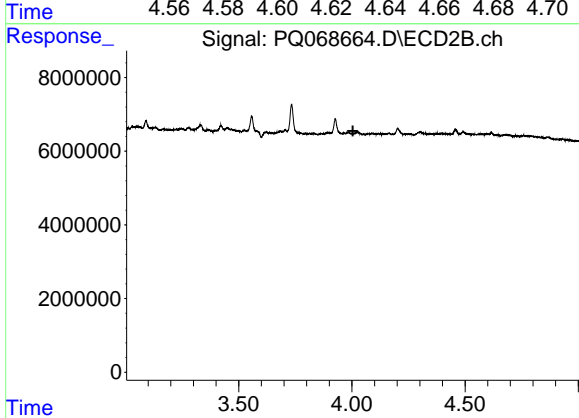
R.T.: 0.000 min
 Exp R.T. : 3.844 min
 Response: 0
 Conc: N.D.



#5 AR-1016-3

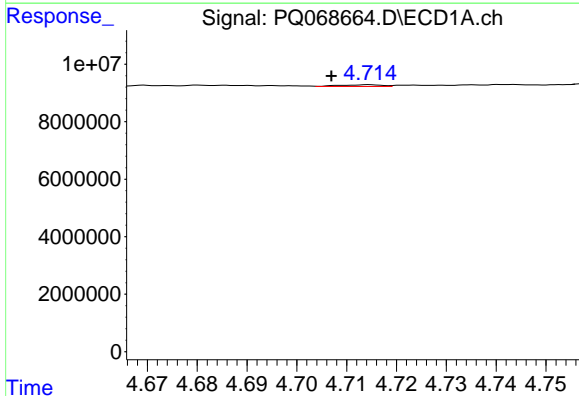
R.T.: 4.628 min
Delta R.T.: 0.014 min
Response: 1135668
Conc: 5.22 ng/ml

Instrument :
ECD_Q
ClientSampleId :
C0AS3



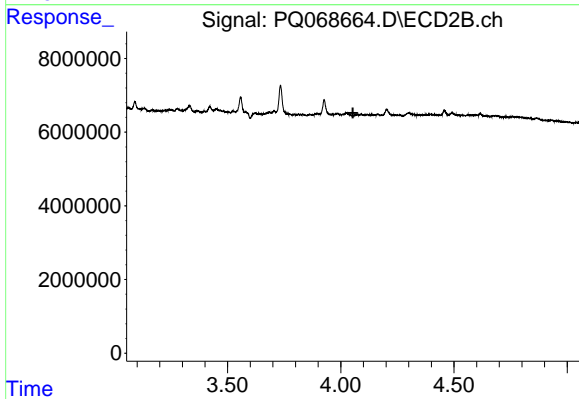
#5 AR-1016-3

R.T.: 0.000 min
Exp R.T. : 4.005 min
Response: 0
Conc: N.D.



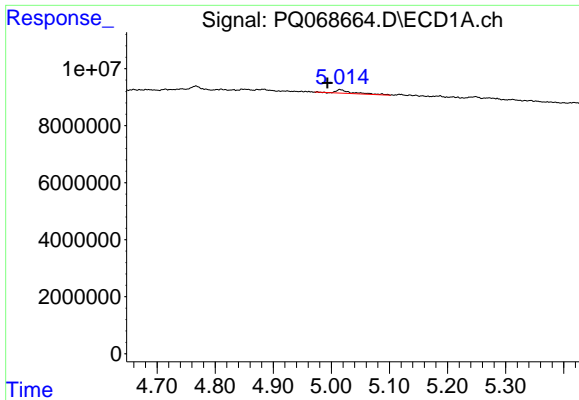
#6 AR-1016-4

R.T.: 4.714 min
Delta R.T.: 0.008 min
Response: 350447
Conc: 1.94 ng/ml



#6 AR-1016-4

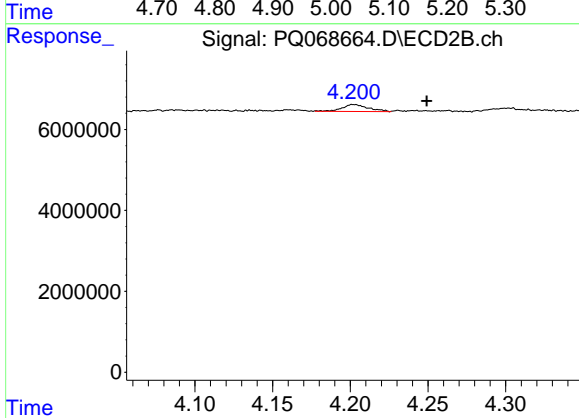
R.T.: 0.000 min
Exp R.T. : 4.053 min
Response: 0
Conc: N.D.



#7 AR-1016-5

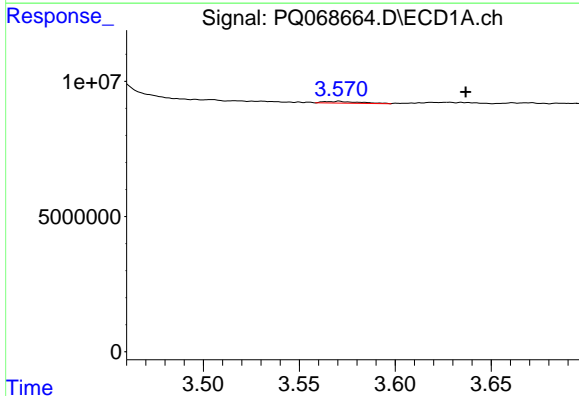
R.T.: 5.015 min
 Delta R.T.: 0.021 min
 Response: 2360077
 Conc: 13.58 ng/ml

Instrument :
 ECD_Q
 ClientSampleId :
 C0AS3



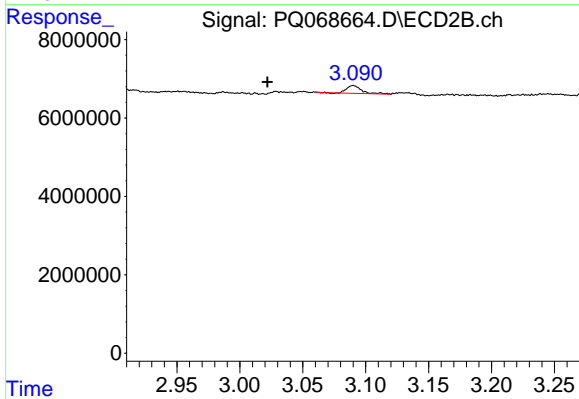
#7 AR-1016-5

R.T.: 4.202 min
 Delta R.T.: -0.047 min
 Response: 2003718
 Conc: 10.88 ng/ml



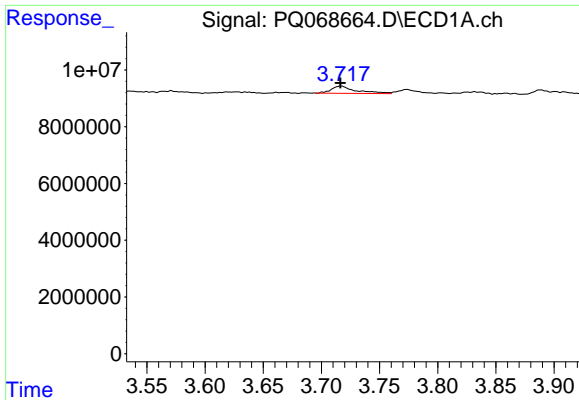
#8 AR-1221-1

R.T.: 3.571 min
 Delta R.T.: -0.066 min
 Response: 848498
 Conc: 9.24 ng/ml



#8 AR-1221-1

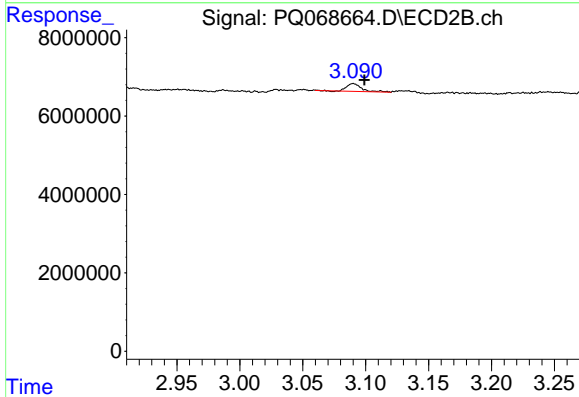
R.T.: 3.090 min
 Delta R.T.: 0.068 min
 Response: 1641196
 Conc: 19.21 ng/ml



#9 AR-1221-2

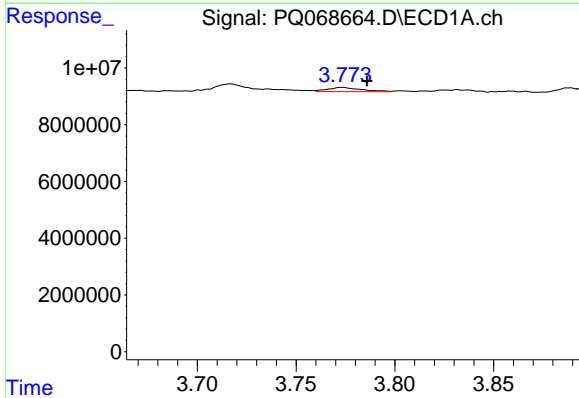
R.T.: 3.717 min
 Delta R.T.: 0.000 min
 Response: 3754056
 Conc: 58.80 ng/ml

Instrument :
 ECD_Q
 ClientSampleId :
 C0AS3



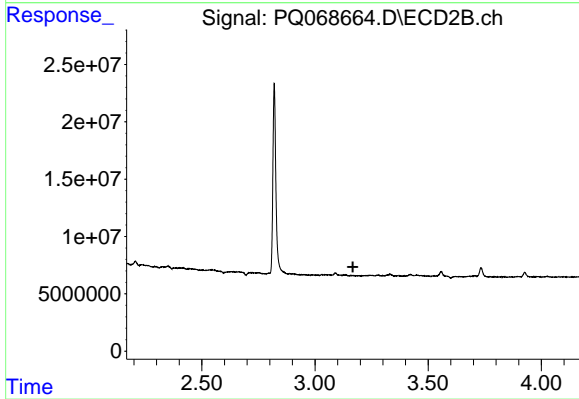
#9 AR-1221-2

R.T.: 3.090 min
 Delta R.T.: -0.009 min
 Response: 1641196
 Conc: 27.53 ng/ml



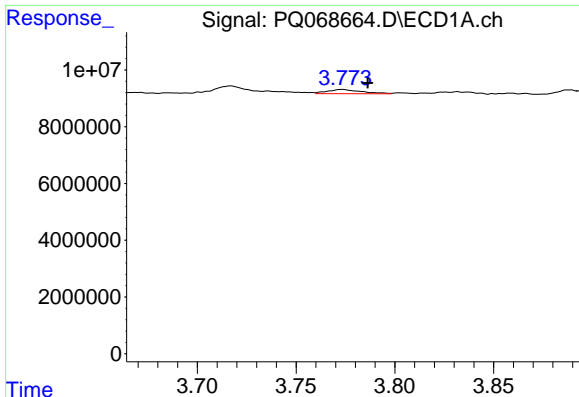
#10 AR-1221-3

R.T.: 3.773 min
 Delta R.T.: -0.013 min
 Response: 1785074
 Conc: 8.64 ng/ml



#10 AR-1221-3

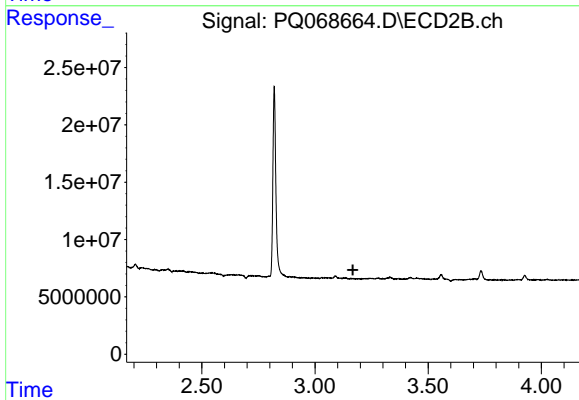
R.T.: 0.000 min
 Exp R.T. : 3.168 min
 Response: 0
 Conc: N.D.



#11 AR-1232-1

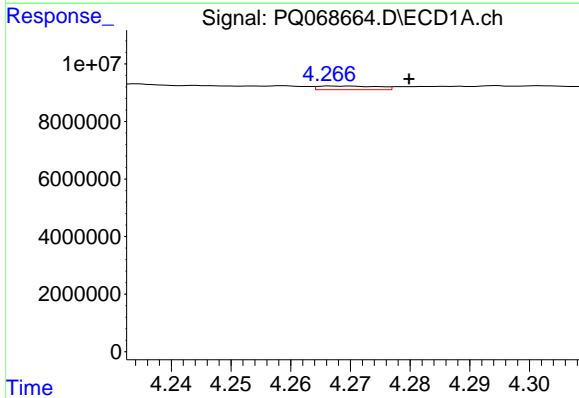
R.T.: 3.773 min
 Delta R.T.: -0.013 min
 Response: 1785074
 Conc: 10.81 ng/ml

Instrument :
 ECD_Q
 ClientSampleId :
 C0AS3



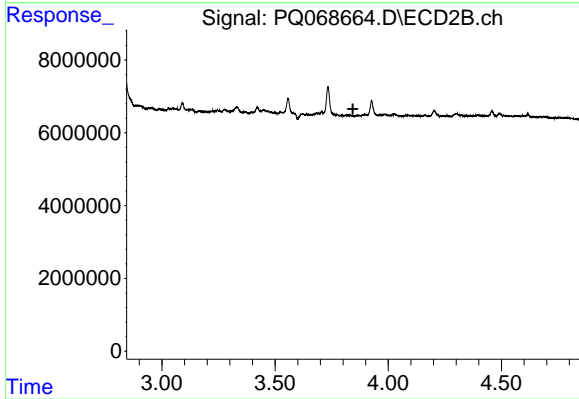
#11 AR-1232-1

R.T.: 0.000 min
 Exp R.T. : 3.168 min
 Response: 0
 Conc: N.D.



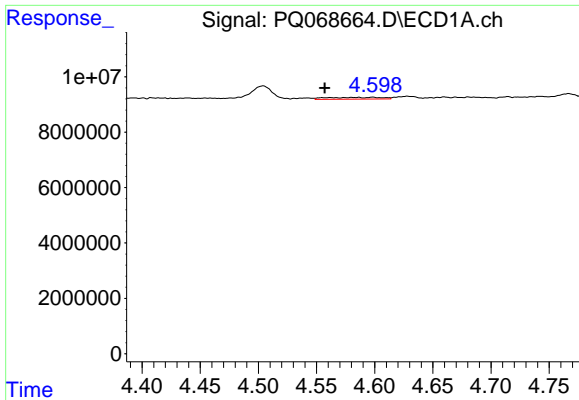
#12 AR-1232-2

R.T.: 4.268 min
 Delta R.T.: -0.012 min
 Response: 887944
 Conc: 9.78 ng/ml



#12 AR-1232-2

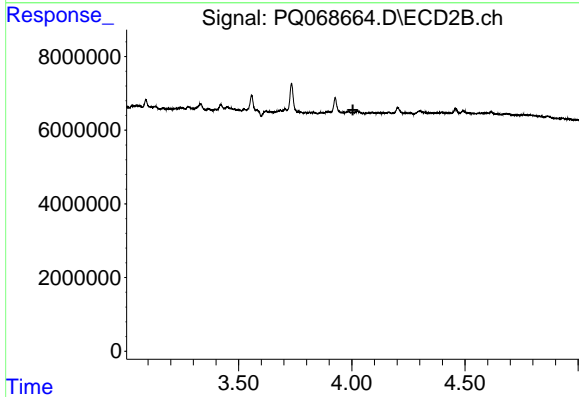
R.T.: 0.000 min
 Exp R.T. : 3.844 min
 Response: 0
 Conc: N.D.



#13 AR-1232-3

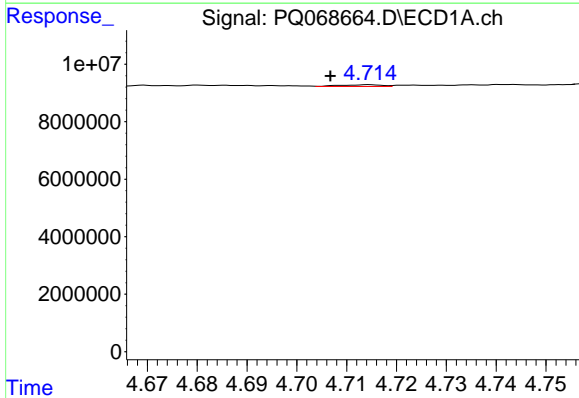
R.T.: 4.598 min
Delta R.T.: 0.041 min
Response: 2201120
Conc: 13.02 ng/ml

Instrument :
ECD_Q
ClientSampleId :
C0AS3



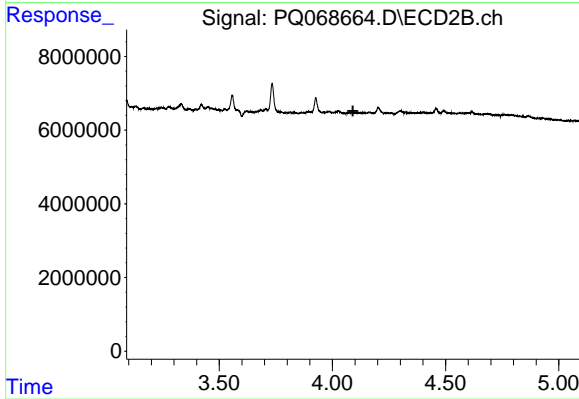
#13 AR-1232-3

R.T.: 0.000 min
Exp R.T. : 4.005 min
Response: 0
Conc: N.D.



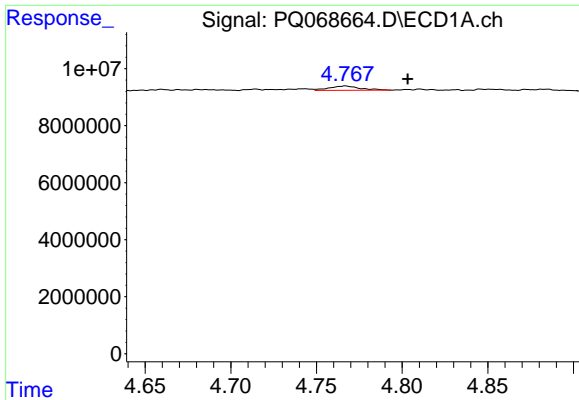
#14 AR-1232-4

R.T.: 4.714 min
Delta R.T.: 0.008 min
Response: 350447
Conc: 4.06 ng/ml



#14 AR-1232-4

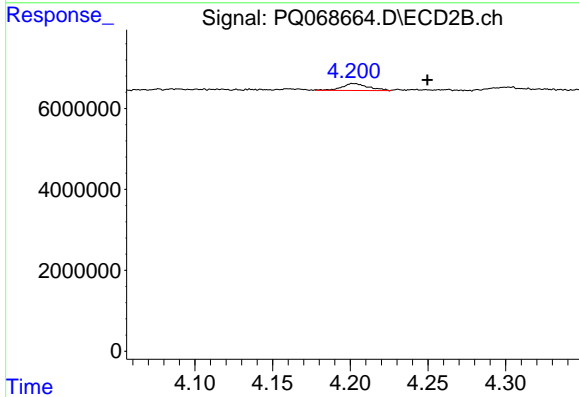
R.T.: 0.000 min
Exp R.T. : 4.091 min
Response: 0
Conc: N.D.



#15 AR-1232-5

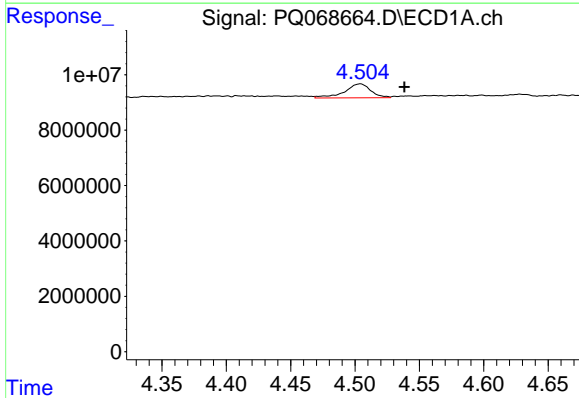
R.T.: 4.767 min
Delta R.T.: -0.036 min
Response: 1889284
Conc: 33.46 ng/ml

Instrument :
ECD_Q
ClientSampleId :
C0AS3



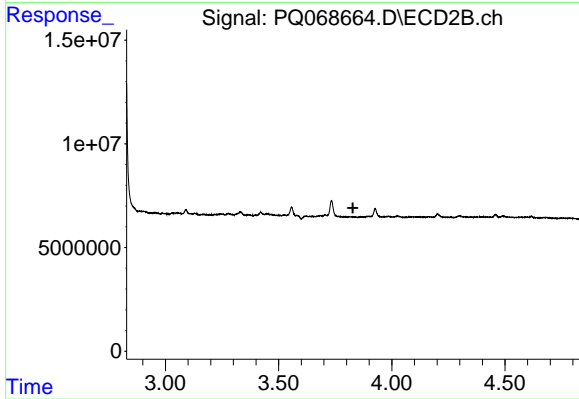
#15 AR-1232-5

R.T.: 4.202 min
Delta R.T.: -0.047 min
Response: 2003718
Conc: 25.49 ng/ml



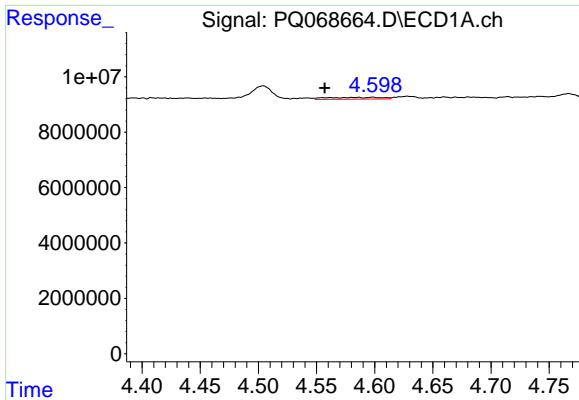
#16 AR-1242-1

R.T.: 4.504 min
Delta R.T.: -0.034 min
Response: 7108684
Conc: 34.78 ng/ml



#16 AR-1242-1

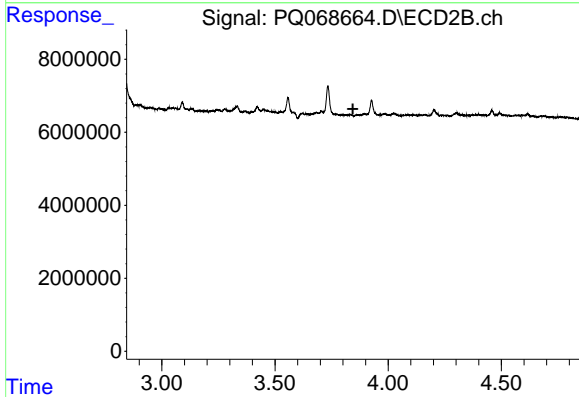
R.T.: 0.000 min
Exp R.T.: 3.828 min
Response: 0
Conc: N.D.



#17 AR-1242-2

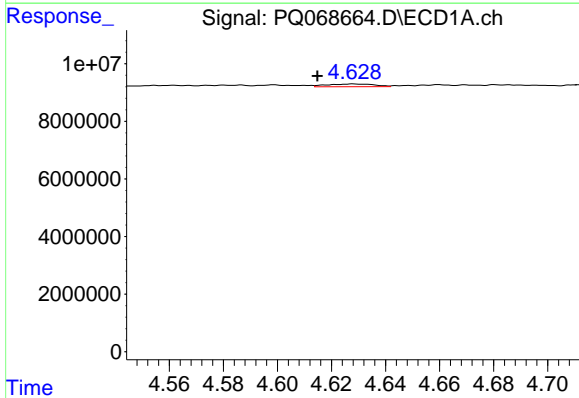
R.T.: 4.598 min
 Delta R.T.: 0.041 min
 Response: 2201120
 Conc: 7.03 ng/ml

Instrument :
 ECD_Q
 ClientSampleId :
 C0AS3



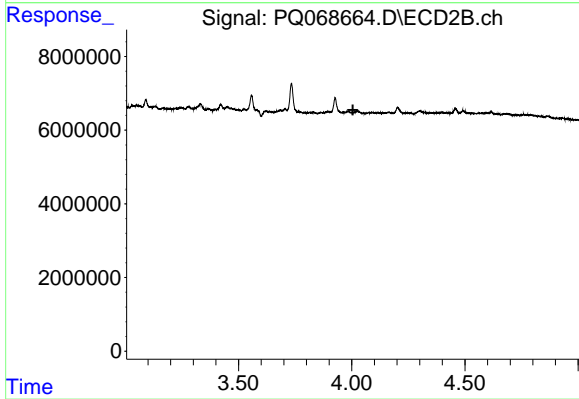
#17 AR-1242-2

R.T.: 0.000 min
 Exp R.T. : 3.844 min
 Response: 0
 Conc: N.D.



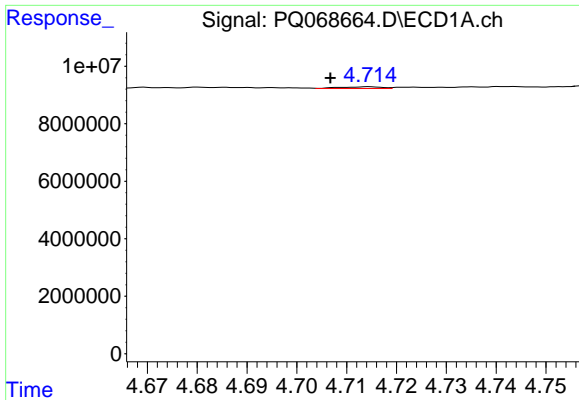
#18 AR-1242-3

R.T.: 4.628 min
 Delta R.T.: 0.013 min
 Response: 1135668
 Conc: 5.80 ng/ml



#18 AR-1242-3

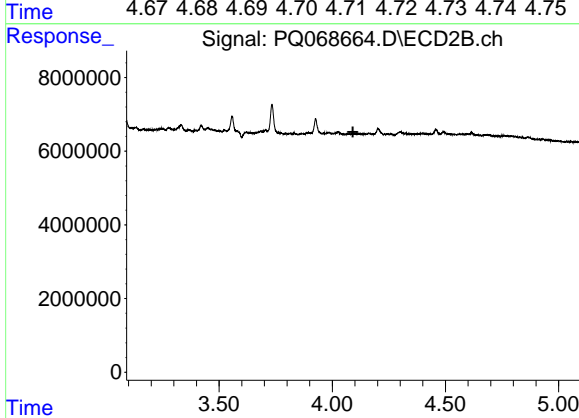
R.T.: 0.000 min
 Exp R.T. : 4.005 min
 Response: 0
 Conc: N.D.



#19 AR-1242-4

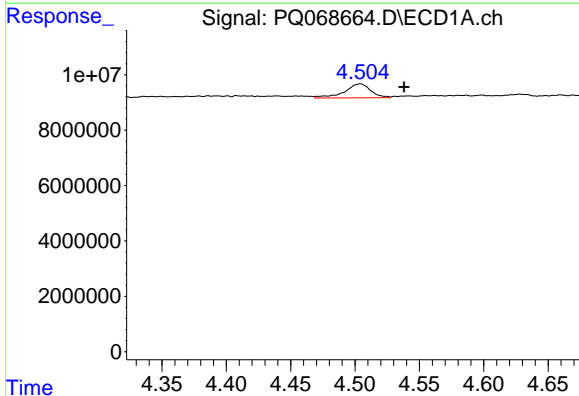
R.T.: 4.714 min
 Delta R.T.: 0.008 min
 Response: 350447
 Conc: 2.17 ng/ml

Instrument :
 ECD_Q
 ClientSampleId :
 C0AS3



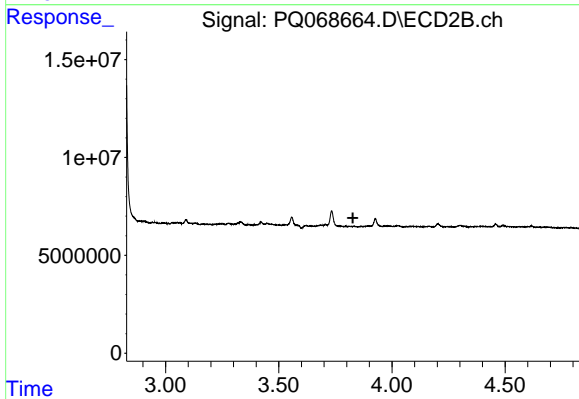
#19 AR-1242-4

R.T.: 0.000 min
 Exp R.T. : 4.091 min
 Response: 0
 Conc: N.D.



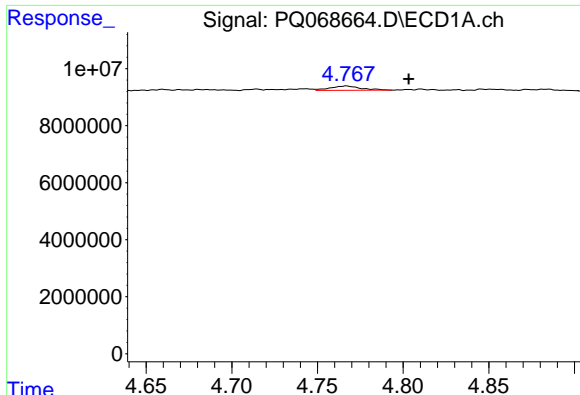
#21 AR-1248-1

R.T.: 4.504 min
 Delta R.T.: -0.034 min
 Response: 7108684
 Conc: 46.17 ng/ml



#21 AR-1248-1

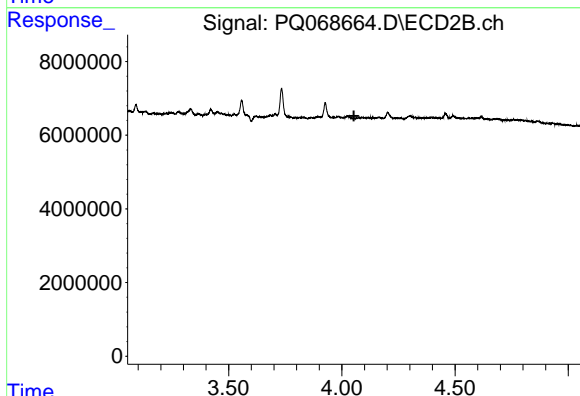
R.T.: 0.000 min
 Exp R.T. : 3.828 min
 Response: 0
 Conc: N.D.



#22 AR-1248-2

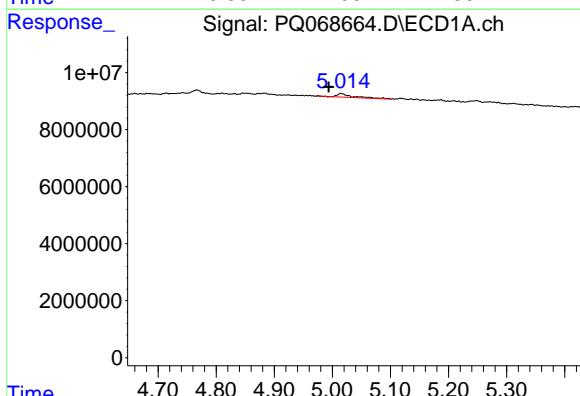
R.T.: 4.767 min
 Delta R.T.: -0.036 min
 Response: 1889284
 Conc: 8.99 ng/ml

Instrument :
 ECD_Q
 ClientSampleId :
 C0AS3



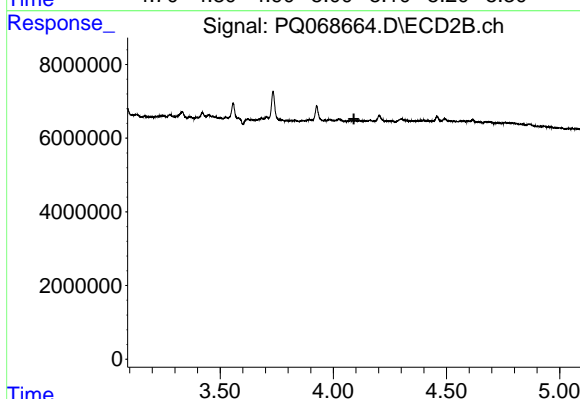
#22 AR-1248-2

R.T.: 0.000 min
 Exp R.T. : 4.053 min
 Response: 0
 Conc: N.D.



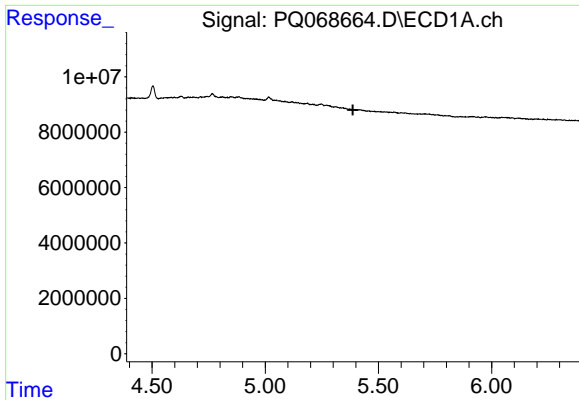
#23 AR-1248-3

R.T.: 5.015 min
 Delta R.T.: 0.021 min
 Response: 2360077
 Conc: 9.35 ng/ml



#23 AR-1248-3

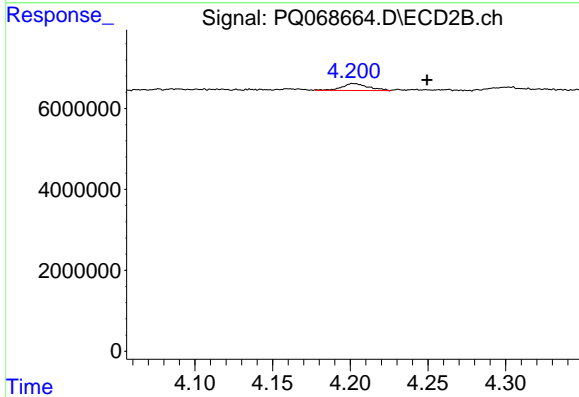
R.T.: 0.000 min
 Exp R.T. : 4.091 min
 Response: 0
 Conc: N.D.



#24 AR-1248-4

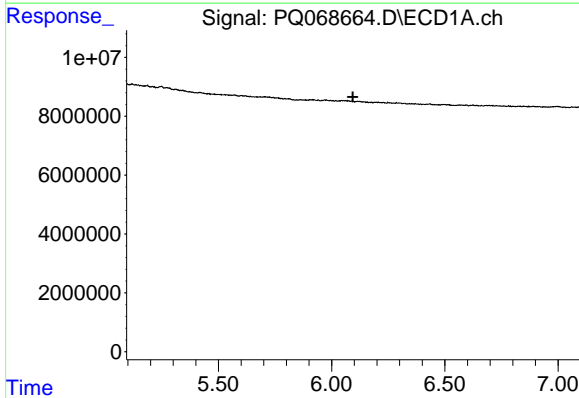
R.T.: 0.000 min
 Exp R.T.: 5.387 min
 Response: 0
 Conc: N.D.

Instrument :
 ECD_Q
 ClientSampleId :
 C0AS3



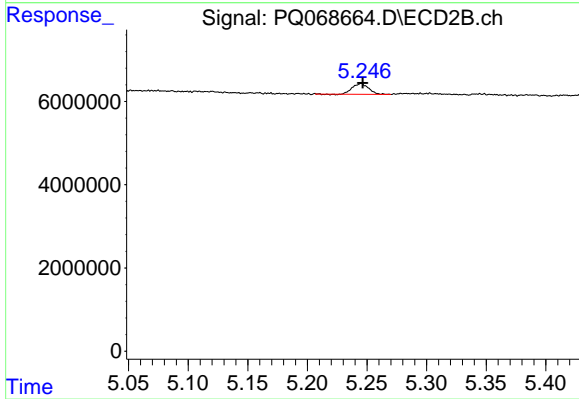
#24 AR-1248-4

R.T.: 4.202 min
 Delta R.T.: -0.047 min
 Response: 2003718
 Conc: 7.59 ng/ml



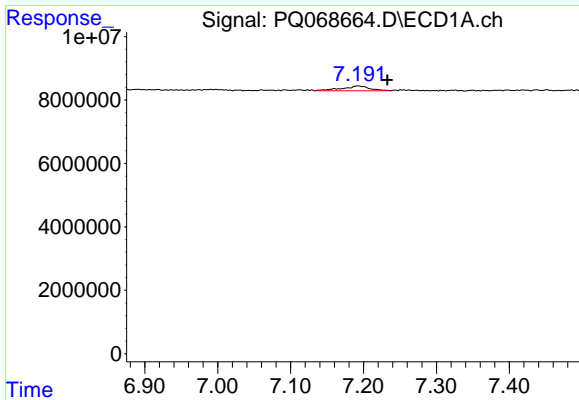
#31 AR-1260-1

R.T.: 0.000 min
 Exp R.T.: 6.093 min
 Response: 0
 Conc: N.D.



#31 AR-1260-1

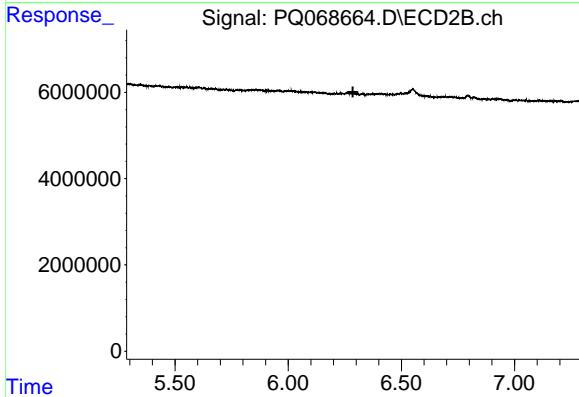
R.T.: 5.245 min
 Delta R.T.: -0.001 min
 Response: 2432923
 Conc: 6.69 ng/ml



#35 AR-1260-5

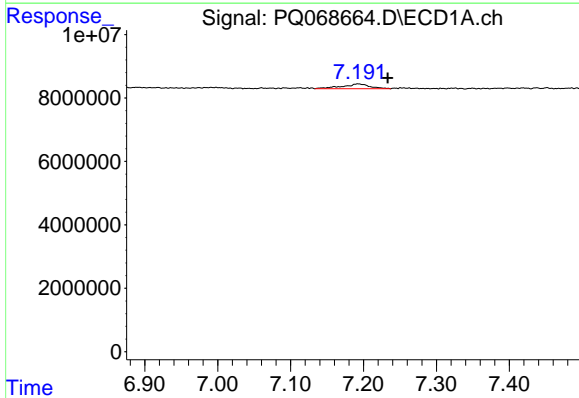
R.T.: 7.193 min
 Delta R.T.: -0.040 min
 Response: 3892602
 Conc: 6.67 ng/ml

Instrument :
 ECD_Q
 ClientSampleId :
 C0AS3



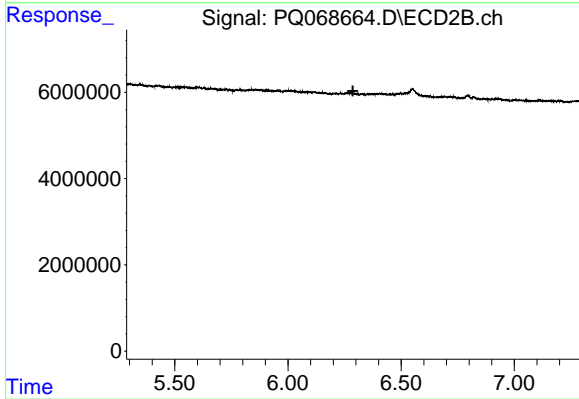
#35 AR-1260-5

R.T.: 0.000 min
 Exp R.T. : 6.286 min
 Response: 0
 Conc: N.D.



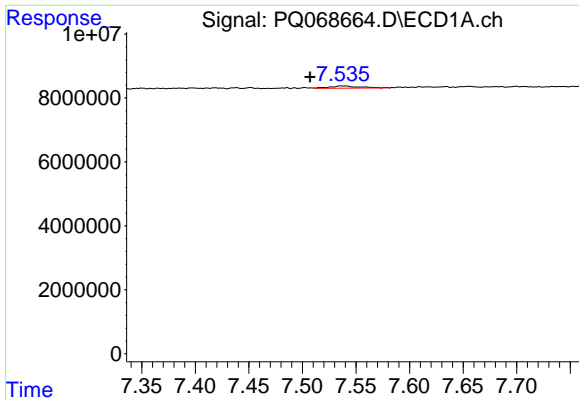
#37 AR-1262-2

R.T.: 7.193 min
 Delta R.T.: -0.040 min
 Response: 3892602
 Conc: 5.70 ng/ml



#37 AR-1262-2

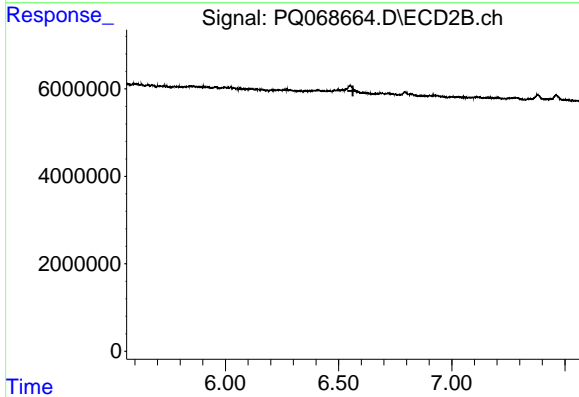
R.T.: 0.000 min
 Exp R.T. : 6.287 min
 Response: 0
 Conc: N.D.



#38 AR-1262-3

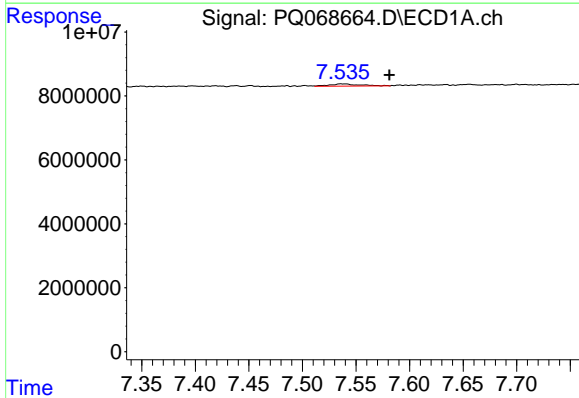
R.T.: 7.536 min
 Delta R.T.: 0.029 min
 Response: 1274025
 Conc: 2.88 ng/ml

Instrument :
 ECD_Q
 ClientSampleId :
 C0AS3



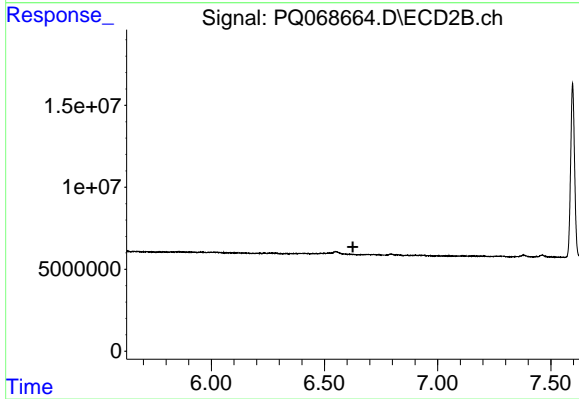
#38 AR-1262-3

R.T.: 0.000 min
 Exp R.T. : 6.563 min
 Response: 0
 Conc: N.D.



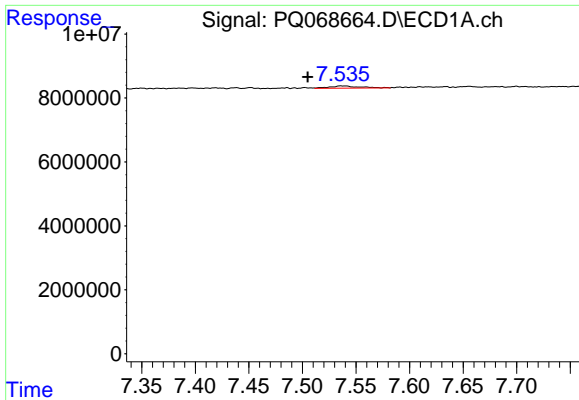
#39 AR-1262-4

R.T.: 7.536 min
 Delta R.T.: -0.045 min
 Response: 1274025
 Conc: 3.72 ng/ml



#39 AR-1262-4

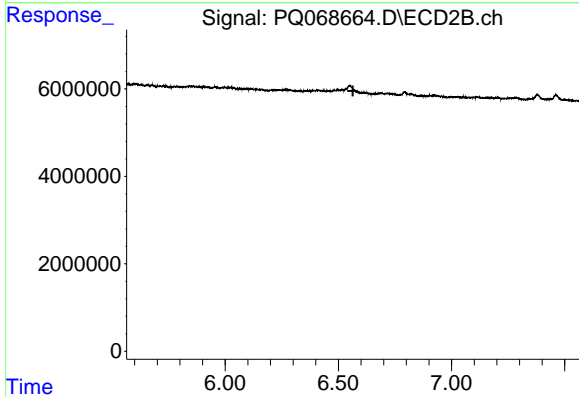
R.T.: 0.000 min
 Exp R.T. : 6.625 min
 Response: 0
 Conc: N.D.



#41 AR-1268-1

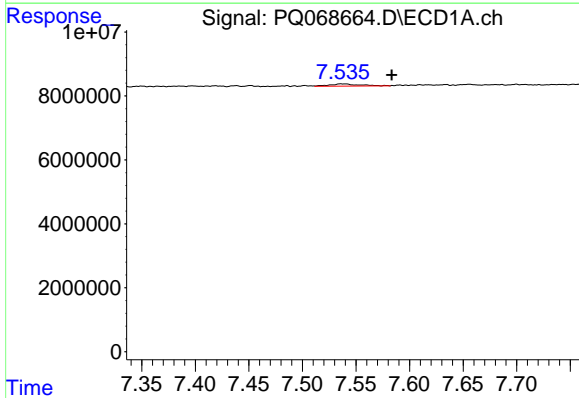
R.T.: 7.536 min
 Delta R.T.: 0.031 min
 Response: 1274025
 Conc: 1.66 ng/ml

Instrument :
 ECD_Q
 ClientSampleId :
 C0AS3



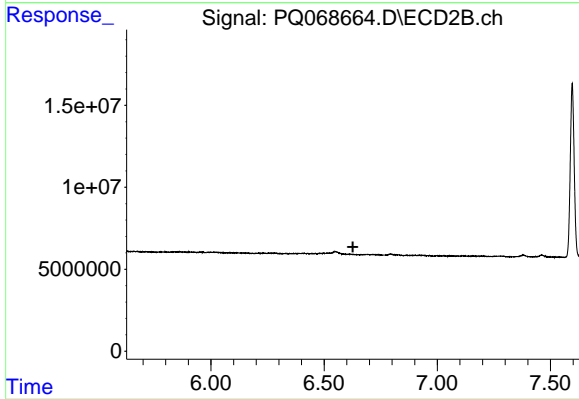
#41 AR-1268-1

R.T.: 0.000 min
 Exp R.T. : 6.564 min
 Response: 0
 Conc: N.D.



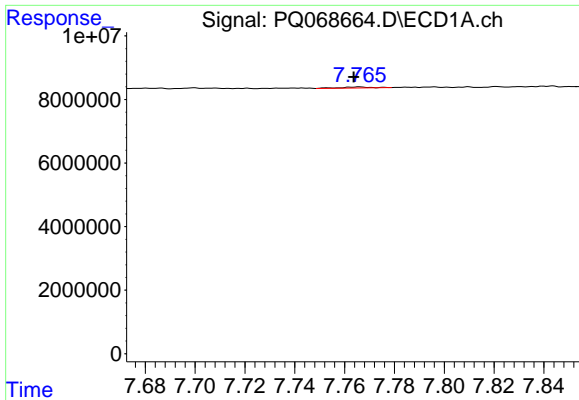
#42 AR-1268-2

R.T.: 7.536 min
 Delta R.T.: -0.047 min
 Response: 1274025
 Conc: 1.78 ng/ml



#42 AR-1268-2

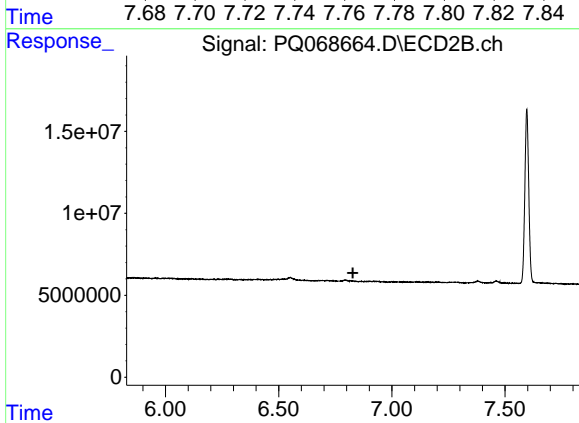
R.T.: 0.000 min
 Exp R.T. : 6.627 min
 Response: 0
 Conc: N.D.



#43 AR-1268-3

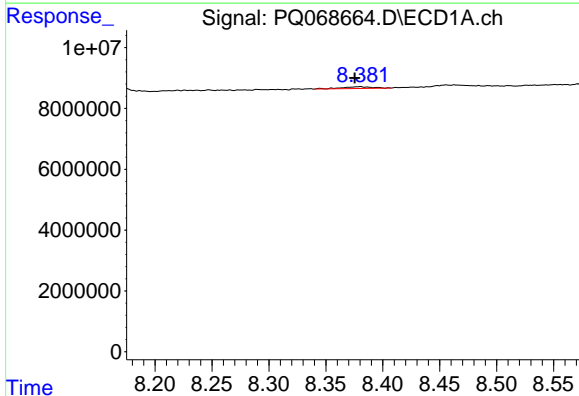
R.T.: 7.766 min
 Delta R.T.: 0.002 min
 Response: 257336
 Conc: 0.45 ng/ml

Instrument :
 ECD_Q
 ClientSampleId :
 C0AS3



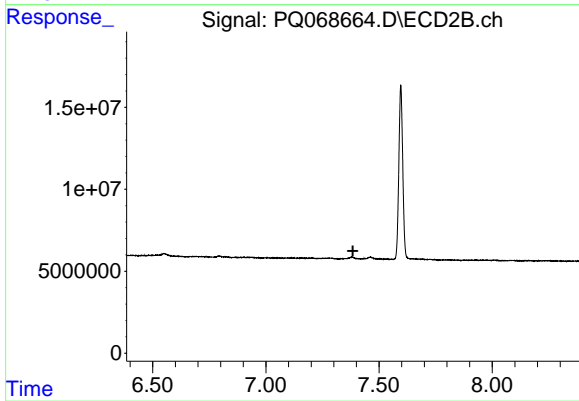
#43 AR-1268-3

R.T.: 0.000 min
 Exp R.T. : 6.828 min
 Response: 0
 Conc: N.D.



#45 AR-1268-5

R.T.: 8.380 min
 Delta R.T.: 0.004 min
 Response: 969524
 Conc: 0.60 ng/ml



#45 AR-1268-5

R.T.: 0.000 min
 Exp R.T. : 7.384 min
 Response: 0
 Conc: N.D.