

Data Path : Z:\pestpcbsrv\HPCHEM1\ECD_Q\Data\PQ091724\
 Data File : PQ068665.D
 Signal(s) : Signal #1: ECD1A.ch Signal #2: ECD2B.ch
 Acq On : 17 Sep 2024 12:34
 Operator : YP\AJ
 Sample : P3997-12
 Misc :
 ALS Vial : 43 Sample Multiplier: 1

Instrument :
 ECD_Q
 ClientSampleId :
 COAT1

Integration File signal 1: autoint1.e
 Integration File signal 2: autoint2.e
 Quant Time: Sep 18 01:27:55 2024
 Quant Method : Z:\pestpcbsrv\HPCHEM1\ECD_Q\Method\PQ082724CLP.M
 Quant Title : GC EXTRACTABLES
 QLast Update : Wed Aug 28 02:08:25 2024
 Response via : Initial Calibration
 Integrator: ChemStation

Volume Inj. : 1 µl
 Signal #1 Phase : ZB MR2 Signal #2 Phase: ZB MR2
 Signal #1 Info : 30Mx0.32mmx 0.5µm Signal #2 Info : 30M x 0.32mm x 0.25µm

Compound	RT#1	RT#2	Resp#1	Resp#2	ng/ml	ng/ml

System Monitoring Compounds						
1) SA Tetrachlo...	3.438	2.821	147.4E6	149.1E6	18.660	21.059
2) SA Decachlor...	8.611	7.597	62913263	91324423	27.661	27.003
Target Compounds						
3) L1 AR-1016-1	4.499f	0.000	6088107	0	26.937	N.D. #
4) L1 AR-1016-2	4.499f	0.000	6088107	0	17.298	N.D. #
6) L1 AR-1016-4	4.720	0.000	556690	0	3.078	N.D. #
7) L1 AR-1016-5	4.945f	0.000	850126	0	4.892	N.D. #
8) L2 AR-1221-1	0.000	3.090f	0	2138533	N.D.	25.029 #
9) L2 AR-1221-2	3.717	3.090	2402664	2138533	37.635	35.876
10) L2 AR-1221-3	3.717f	0.000	2402664	0	11.634	N.D. #
11) L3 AR-1232-1	3.717f	0.000	2402664	0	14.555	N.D. #
13) L3 AR-1232-3	4.499f	0.000	6088107	0	36.000	N.D. #
14) L3 AR-1232-4	4.720	0.000	556690	0	6.443	N.D. #
16) L4 AR-1242-1	4.499f	0.000	6088107	0	29.785	N.D. #
17) L4 AR-1242-2	4.499f	0.000	6088107	0	19.457	N.D. #
19) L4 AR-1242-4	4.720	0.000	556690	0	3.444	N.D. #
21) L5 AR-1248-1	4.499f	0.000	6088107	0	39.544	N.D. #
23) L5 AR-1248-3	4.945f	0.000	850126	0	3.369	N.D. #
28) L6 AR-1254-3	0.000	5.115	0	1651151	N.D.	3.050 #
35) L7 AR-1260-5	7.193f	0.000	3873907	0	6.638	N.D. #
37) L8 AR-1262-2	7.193f	0.000	3873907	0	5.672	N.D. #
43) L9 AR-1268-3	7.803f	0.000	395610	0	0.685	N.D. #
45) L9 AR-1268-5	8.381	0.000	983949	0	0.605	N.D. #

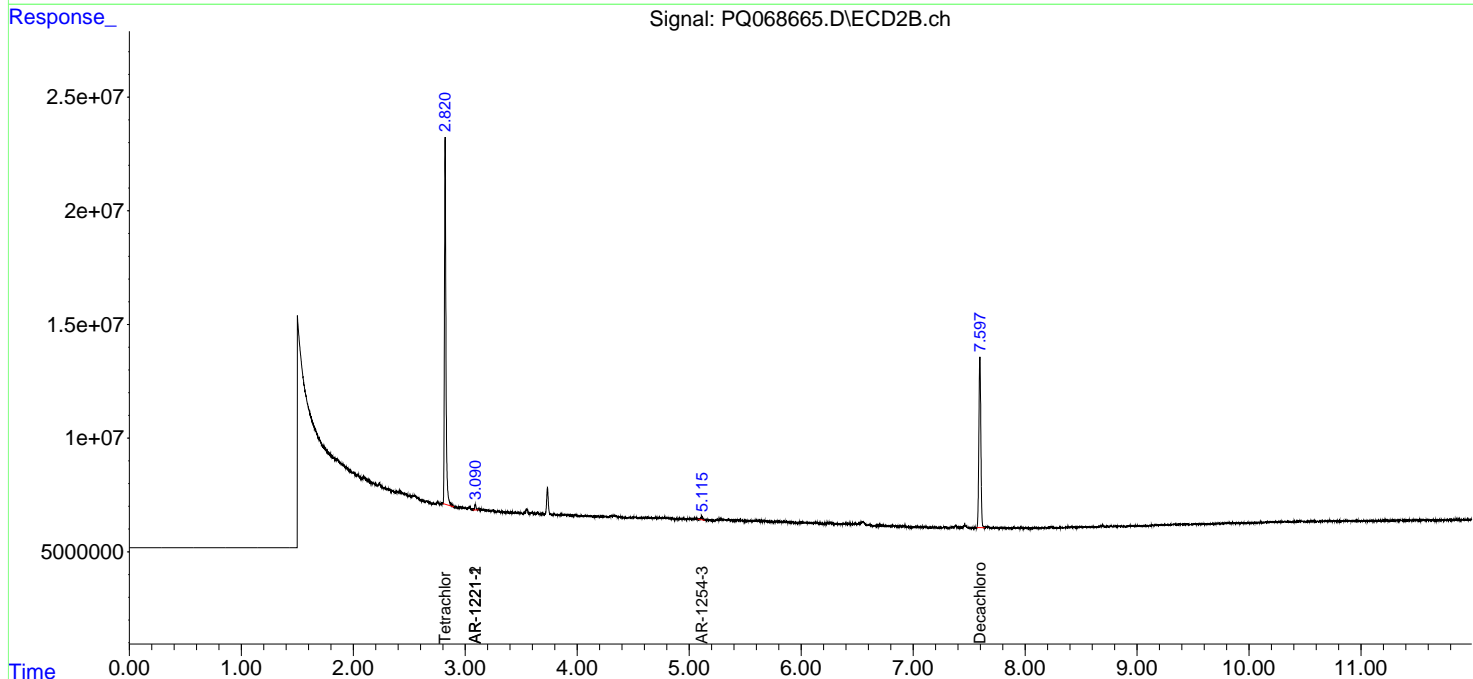
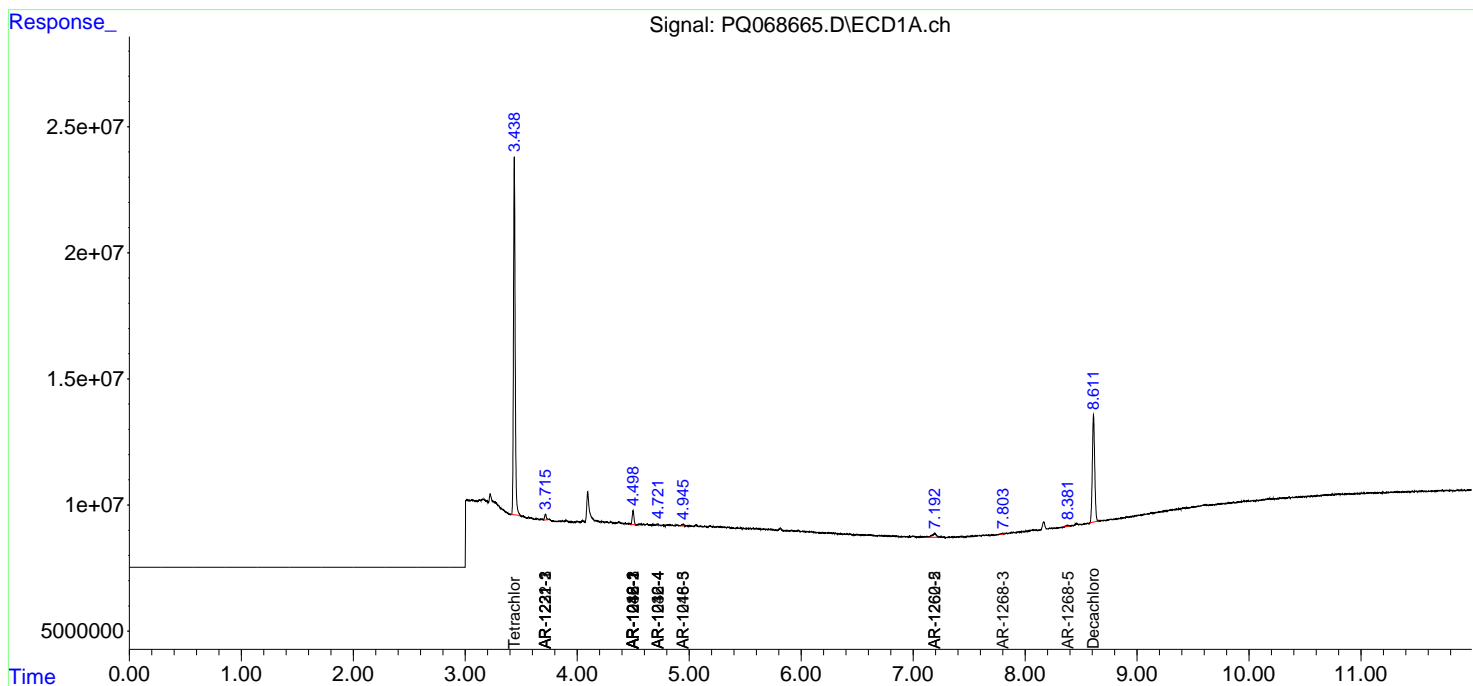
(f)=RT Delta > 1/2 Window (#)=Amounts differ by > 25% (m)=manual int.

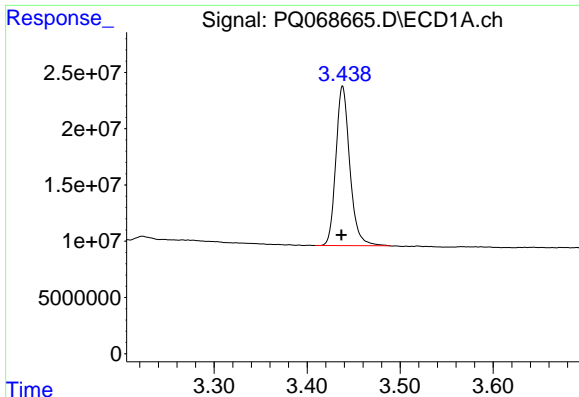
Data Path : Z:\pestpcbsrv\HPCHEM1\ECD_Q\Data\PQ091724\
 Data File : PQ068665.D
 Signal(s) : Signal #1: ECD1A.ch Signal #2: ECD2B.ch
 Acq On : 17 Sep 2024 12:34
 Operator : YP\AJ
 Sample : P3997-12
 Misc :
 ALS Vial : 43 Sample Multiplier: 1

Instrument :
 ECD_Q
 ClientSampleId :
 COAT1

Integration File signal 1: autoint1.e
 Integration File signal 2: autoint2.e
 Quant Time: Sep 18 01:27:55 2024
 Quant Method : Z:\pestpcbsrv\HPCHEM1\ECD_Q\Method\PQ082724CLP.M
 Quant Title : GC EXTRACTABLES
 QLast Update : Wed Aug 28 02:08:25 2024
 Response via : Initial Calibration
 Integrator: ChemStation

Volume Inj. : 1 µl
 Signal #1 Phase : ZB MR1 Signal #2 Phase: ZB MR2
 Signal #1 Info : 30Mx0.32mmx 0.5µm Signal #2 Info : 30M x 0.32mm x 0.25µm

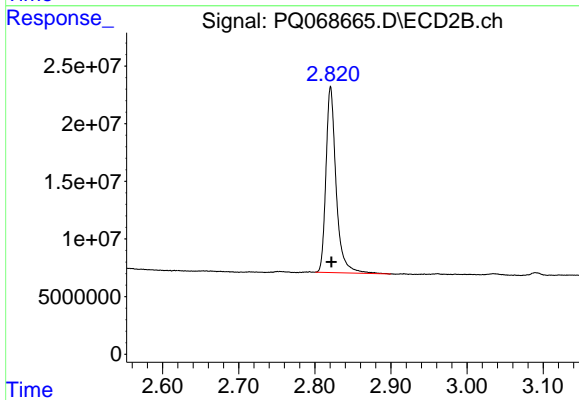




#1 Tetrachloro-m-xylene

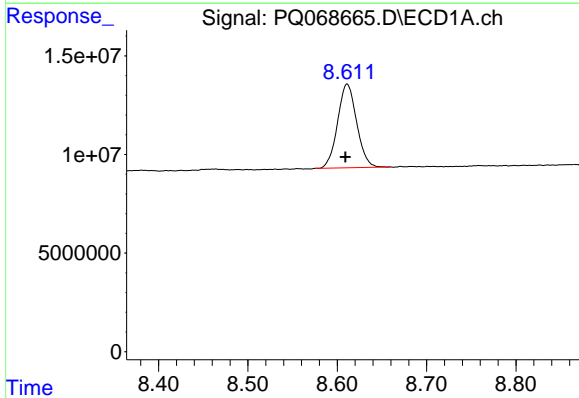
R.T.: 3.438 min
 Delta R.T.: 0.001 min
 Response: 147426743
 Conc: 18.66 ng/ml

Instrument :
 ECD_Q
 ClientSampleId :
 COAT1



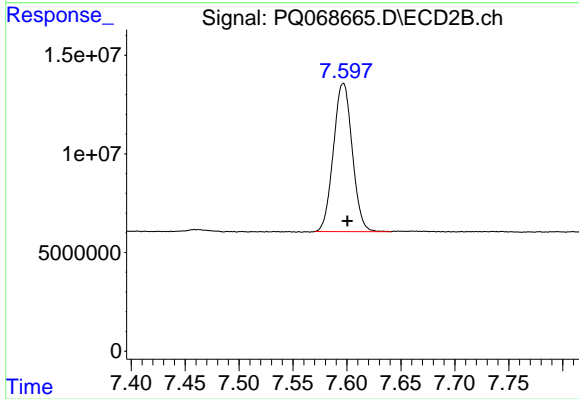
#1 Tetrachloro-m-xylene

R.T.: 2.821 min
 Delta R.T.: -0.001 min
 Response: 149148199
 Conc: 21.06 ng/ml



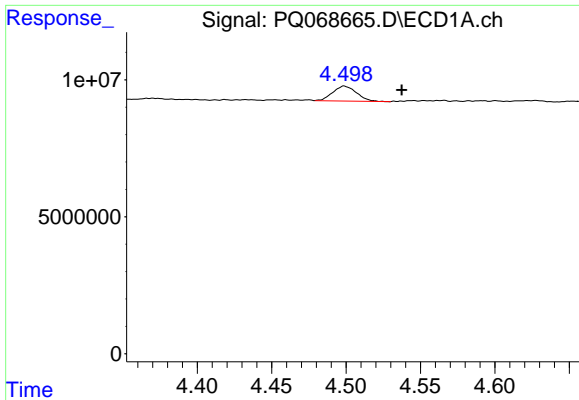
#2 Decachlorobiphenyl

R.T.: 8.611 min
 Delta R.T.: 0.002 min
 Response: 62913263
 Conc: 27.66 ng/ml



#2 Decachlorobiphenyl

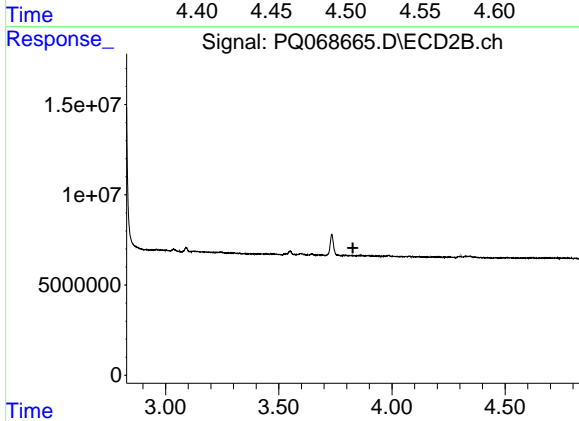
R.T.: 7.597 min
 Delta R.T.: -0.004 min
 Response: 91324423
 Conc: 27.00 ng/ml



#3 AR-1016-1

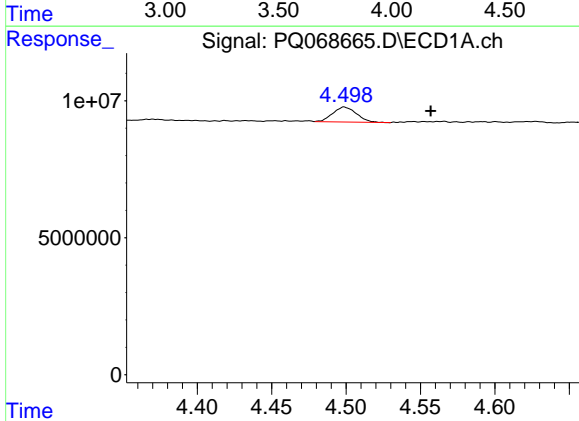
R.T.: 4.499 min
 Delta R.T.: -0.039 min
 Response: 6088107
 Conc: 26.94 ng/ml

Instrument :
 ECD_Q
 ClientSampleId :
 C0AT1



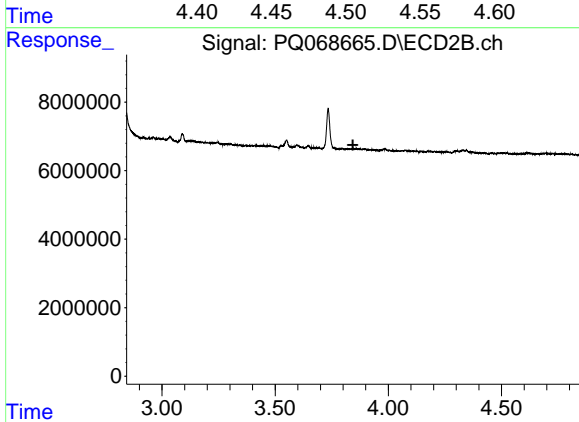
#3 AR-1016-1

R.T.: 0.000 min
 Exp R.T. : 3.828 min
 Response: 0
 Conc: N.D.



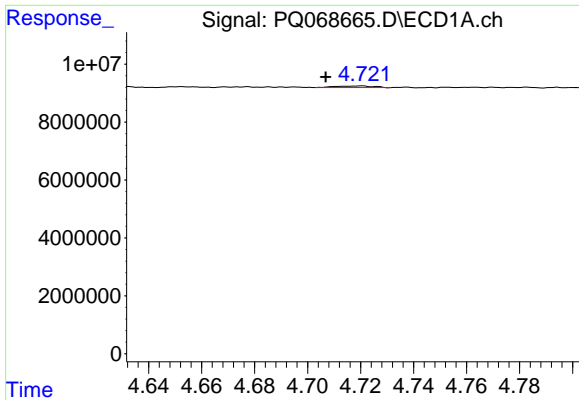
#4 AR-1016-2

R.T.: 4.499 min
 Delta R.T.: -0.058 min
 Response: 6088107
 Conc: 17.30 ng/ml



#4 AR-1016-2

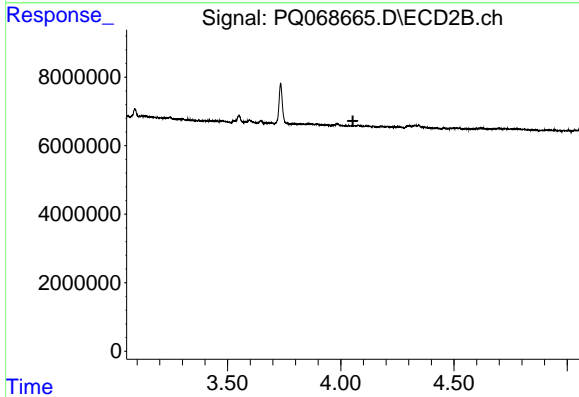
R.T.: 0.000 min
 Exp R.T. : 3.844 min
 Response: 0
 Conc: N.D.



#6 AR-1016-4

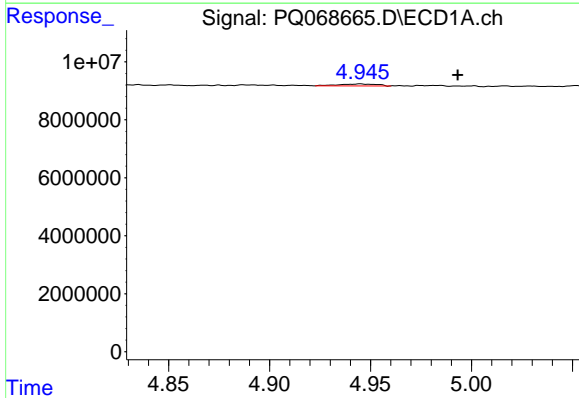
R.T.: 4.720 min
Delta R.T.: 0.013 min
Response: 556690
Conc: 3.08 ng/ml

Instrument :
ECD_Q
ClientSampleId :
C0AT1



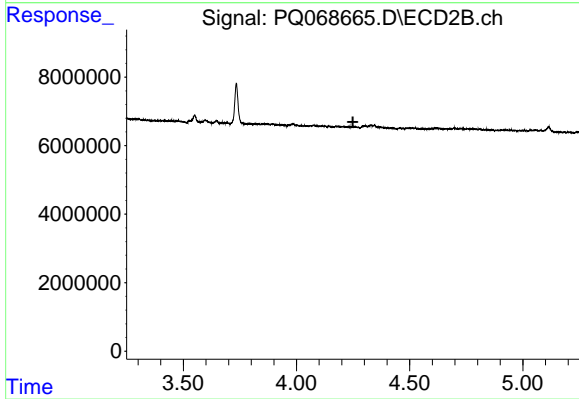
#6 AR-1016-4

R.T.: 0.000 min
Exp R.T. : 4.053 min
Response: 0
Conc: N.D.



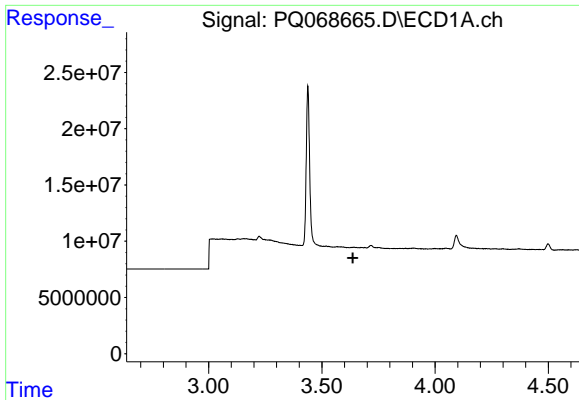
#7 AR-1016-5

R.T.: 4.945 min
Delta R.T.: -0.048 min
Response: 850126
Conc: 4.89 ng/ml



#7 AR-1016-5

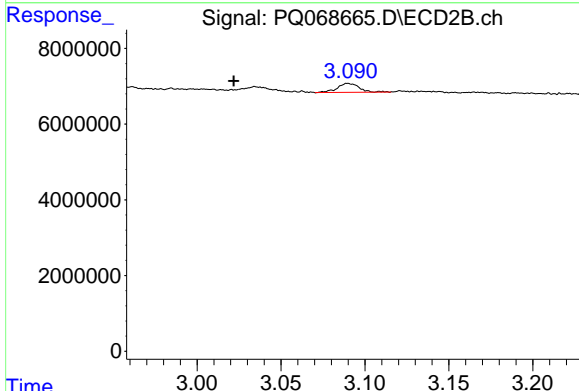
R.T.: 0.000 min
Exp R.T. : 4.249 min
Response: 0
Conc: N.D.



#8 AR-1221-1

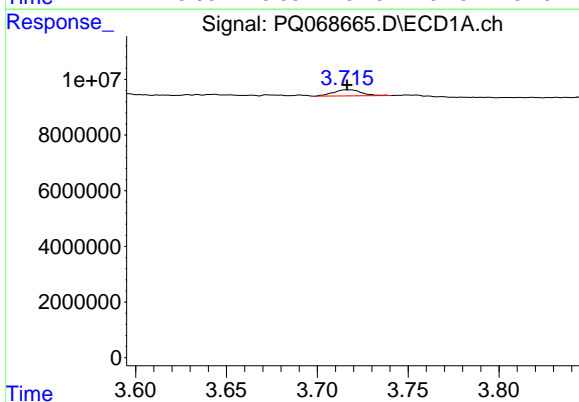
R.T.: 0.000 min
 Exp R.T.: 3.637 min
 Response: 0
 Conc: N.D.

Instrument :
 ECD_Q
 ClientSampleId :
 C0AT1



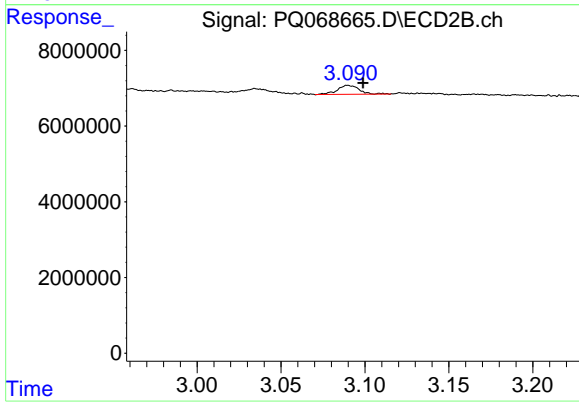
#8 AR-1221-1

R.T.: 3.090 min
 Delta R.T.: 0.068 min
 Response: 2138533
 Conc: 25.03 ng/ml



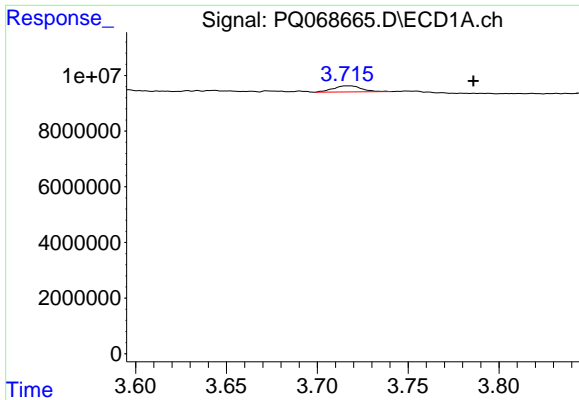
#9 AR-1221-2

R.T.: 3.717 min
 Delta R.T.: 0.000 min
 Response: 2402664
 Conc: 37.63 ng/ml



#9 AR-1221-2

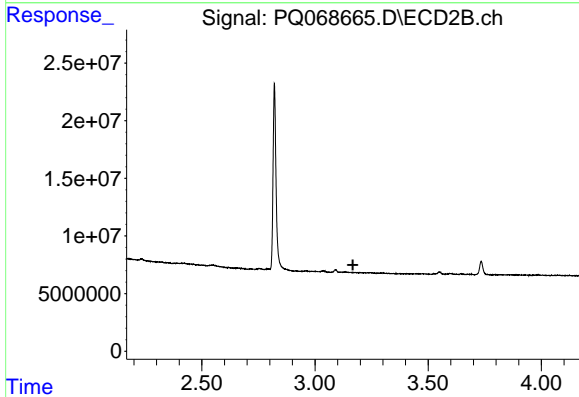
R.T.: 3.090 min
 Delta R.T.: -0.009 min
 Response: 2138533
 Conc: 35.88 ng/ml



#10 AR-1221-3

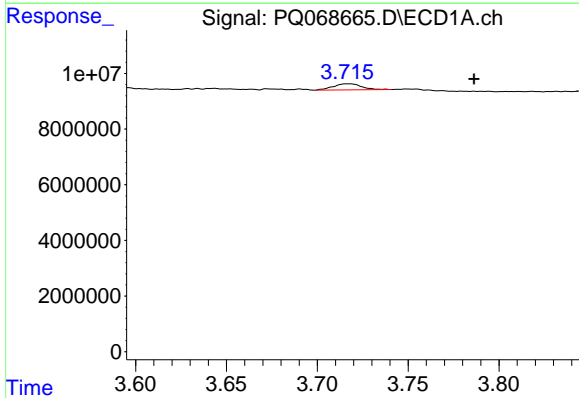
R.T.: 3.717 min
Delta R.T.: -0.069 min
Response: 2402664
Conc: 11.63 ng/ml

Instrument :
ECD_Q
ClientSampleId :
C0AT1



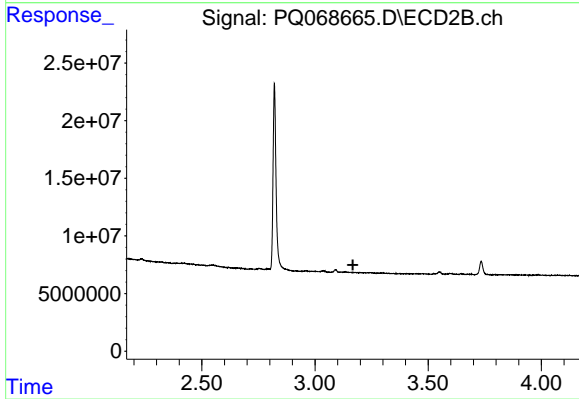
#10 AR-1221-3

R.T.: 0.000 min
Exp R.T. : 3.168 min
Response: 0
Conc: N.D.



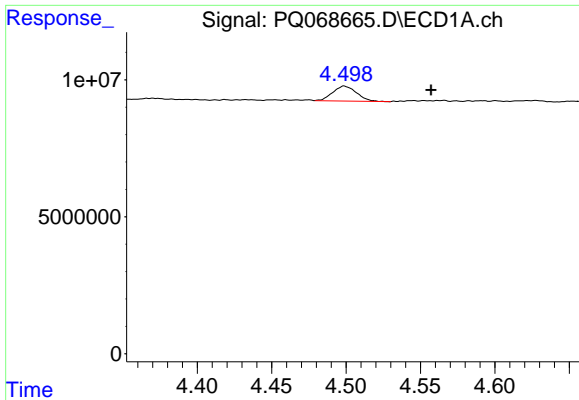
#11 AR-1232-1

R.T.: 3.717 min
Delta R.T.: -0.069 min
Response: 2402664
Conc: 14.56 ng/ml



#11 AR-1232-1

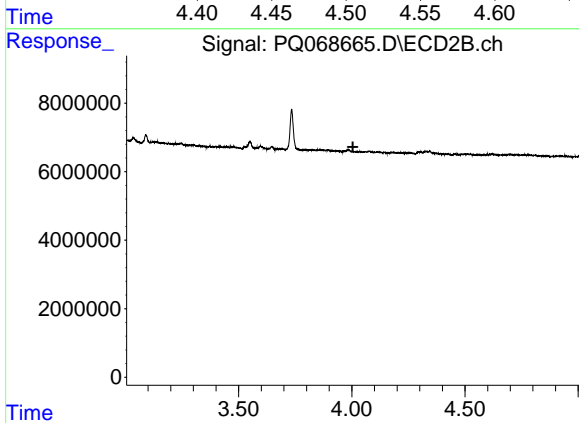
R.T.: 0.000 min
Exp R.T. : 3.168 min
Response: 0
Conc: N.D.



#13 AR-1232-3

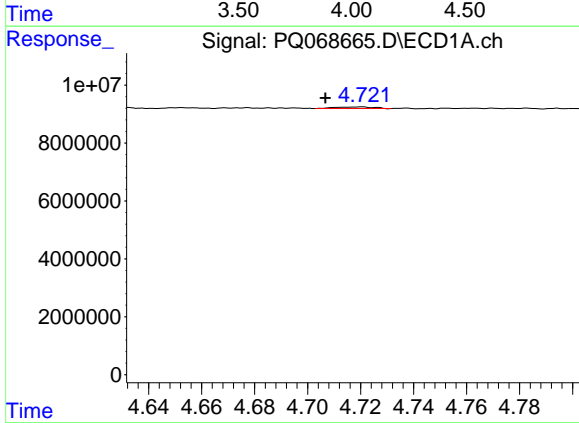
R.T.: 4.499 min
 Delta R.T.: -0.058 min
 Response: 6088107
 Conc: 36.00 ng/ml

Instrument :
 ECD_Q
 ClientSampleId :
 C0AT1



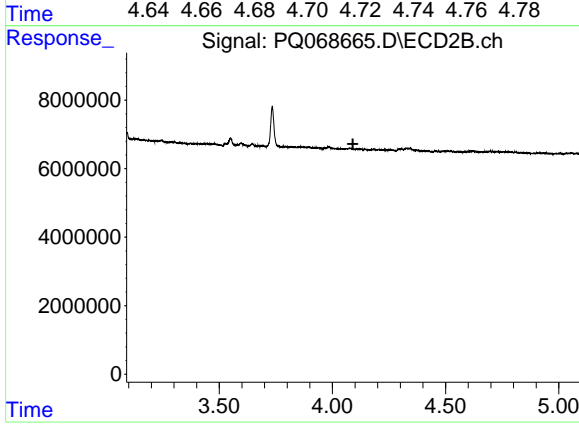
#13 AR-1232-3

R.T.: 0.000 min
 Exp R.T. : 4.005 min
 Response: 0
 Conc: N.D.



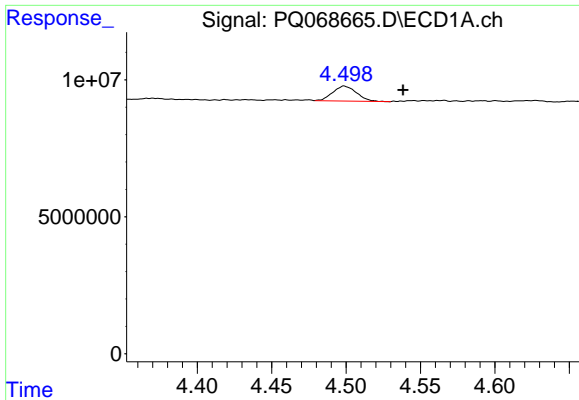
#14 AR-1232-4

R.T.: 4.720 min
 Delta R.T.: 0.013 min
 Response: 556690
 Conc: 6.44 ng/ml



#14 AR-1232-4

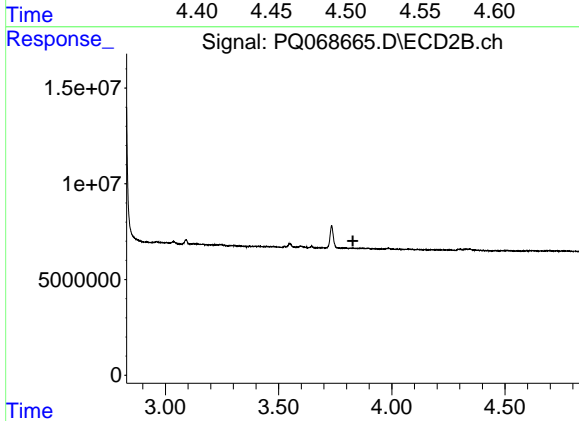
R.T.: 0.000 min
 Exp R.T. : 4.091 min
 Response: 0
 Conc: N.D.



#16 AR-1242-1

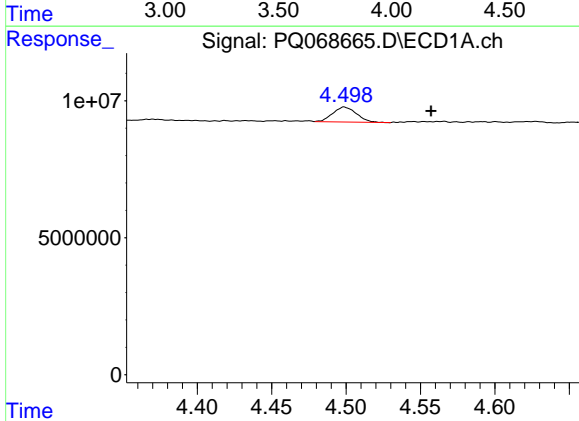
R.T.: 4.499 min
 Delta R.T.: -0.039 min
 Response: 6088107
 Conc: 29.78 ng/ml

Instrument :
 ECD_Q
 ClientSampleId :
 C0AT1



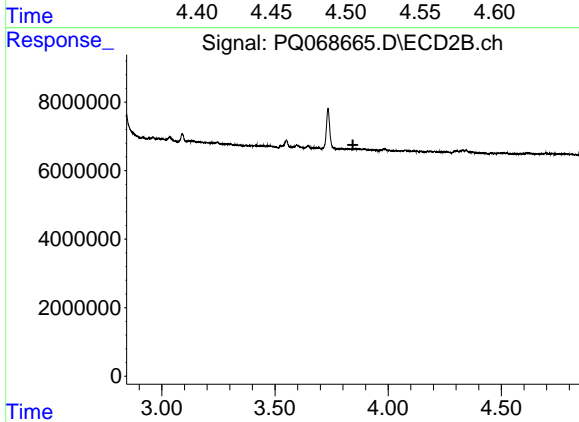
#16 AR-1242-1

R.T.: 0.000 min
 Exp R.T. : 3.828 min
 Response: 0
 Conc: N.D.



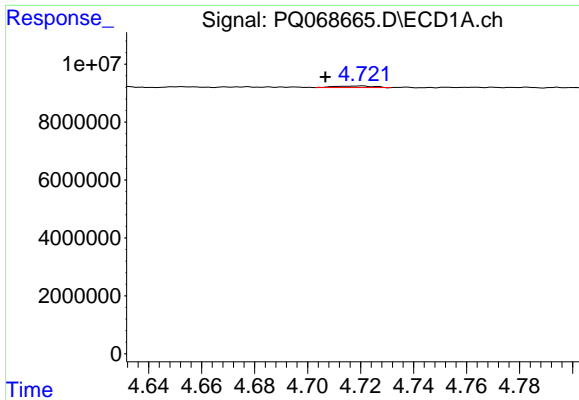
#17 AR-1242-2

R.T.: 4.499 min
 Delta R.T.: -0.058 min
 Response: 6088107
 Conc: 19.46 ng/ml



#17 AR-1242-2

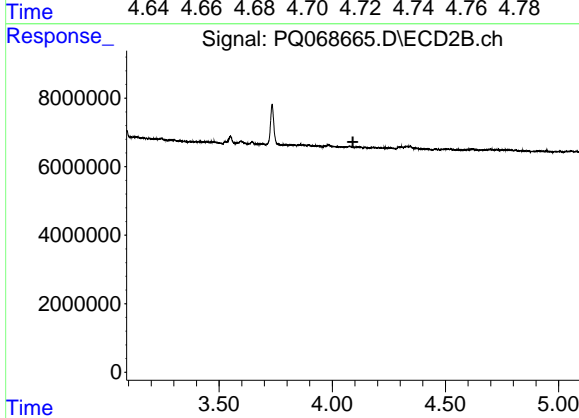
R.T.: 0.000 min
 Exp R.T. : 3.844 min
 Response: 0
 Conc: N.D.



#19 AR-1242-4

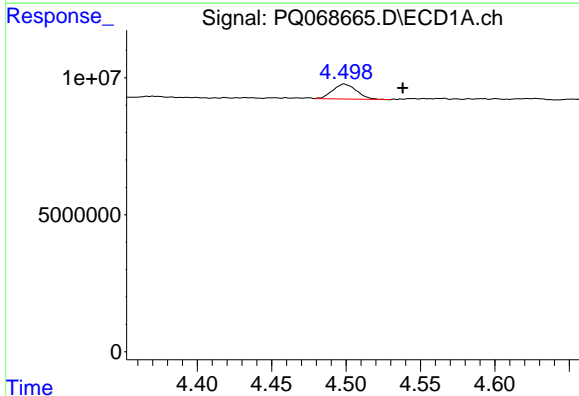
R.T.: 4.720 min
Delta R.T.: 0.013 min
Response: 556690
Conc: 3.44 ng/ml

Instrument :
ECD_Q
ClientSampleId :
C0AT1



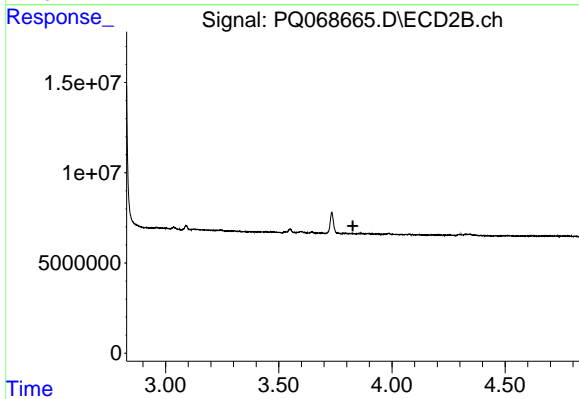
#19 AR-1242-4

R.T.: 0.000 min
Exp R.T. : 4.091 min
Response: 0
Conc: N.D.



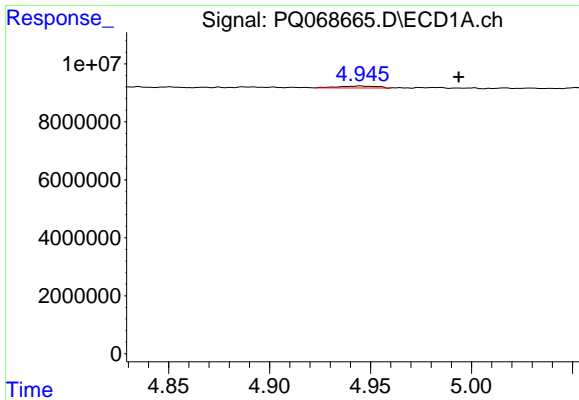
#21 AR-1248-1

R.T.: 4.499 min
Delta R.T.: -0.039 min
Response: 6088107
Conc: 39.54 ng/ml



#21 AR-1248-1

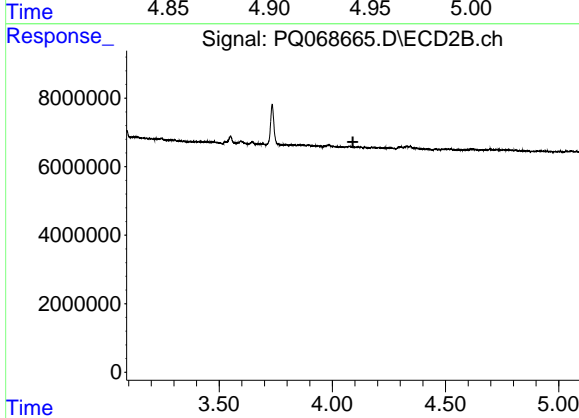
R.T.: 0.000 min
Exp R.T. : 3.828 min
Response: 0
Conc: N.D.



#23 AR-1248-3

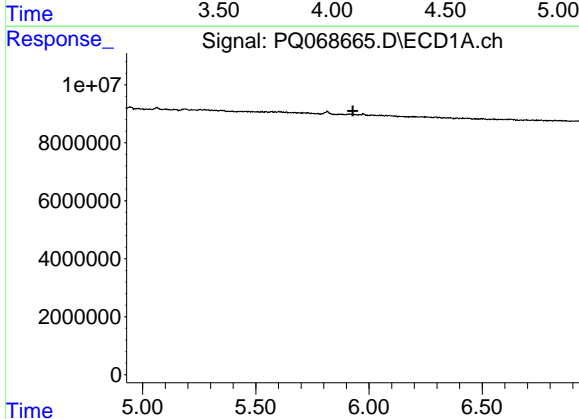
R.T.: 4.945 min
Delta R.T.: -0.049 min
Response: 850126
Conc: 3.37 ng/ml

Instrument :
ECD_Q
ClientSampleId :
C0AT1



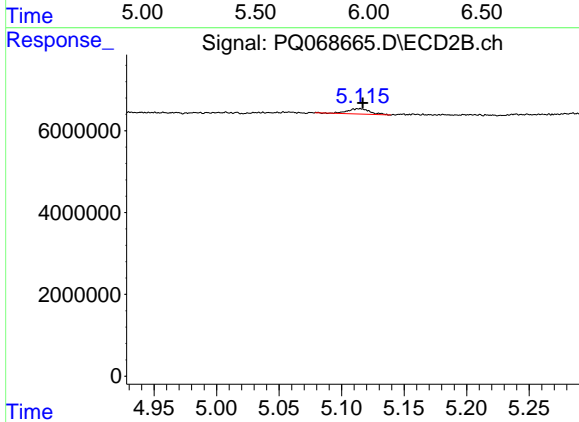
#23 AR-1248-3

R.T.: 0.000 min
Exp R.T. : 4.091 min
Response: 0
Conc: N.D.



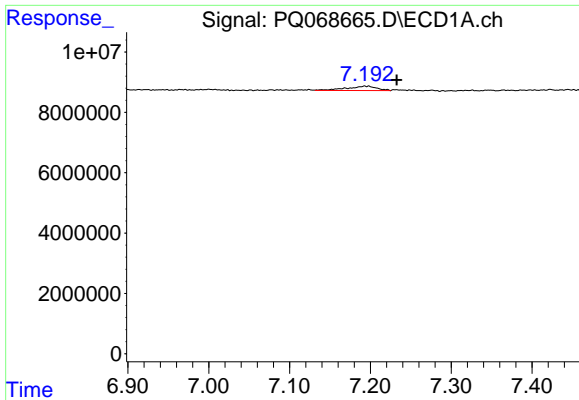
#28 AR-1254-3

R.T.: 0.000 min
Exp R.T. : 5.929 min
Response: 0
Conc: N.D.



#28 AR-1254-3

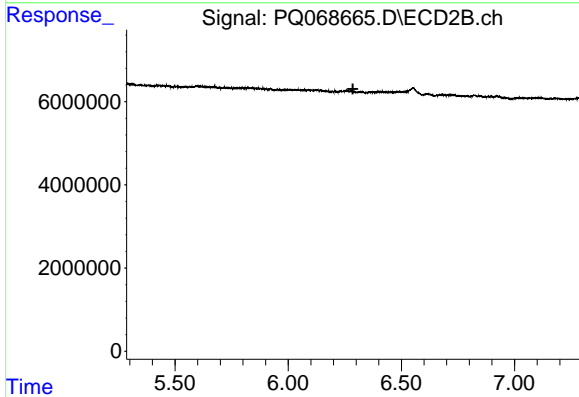
R.T.: 5.115 min
Delta R.T.: -0.002 min
Response: 1651151
Conc: 3.05 ng/ml



#35 AR-1260-5

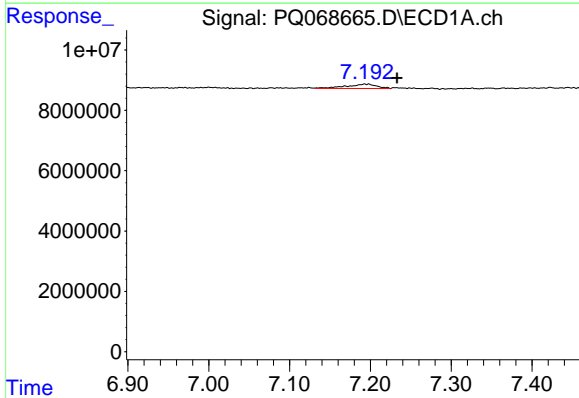
R.T.: 7.193 min
 Delta R.T.: -0.040 min
 Response: 3873907
 Conc: 6.64 ng/ml

Instrument :
 ECD_Q
 ClientSampleId :
 C0AT1



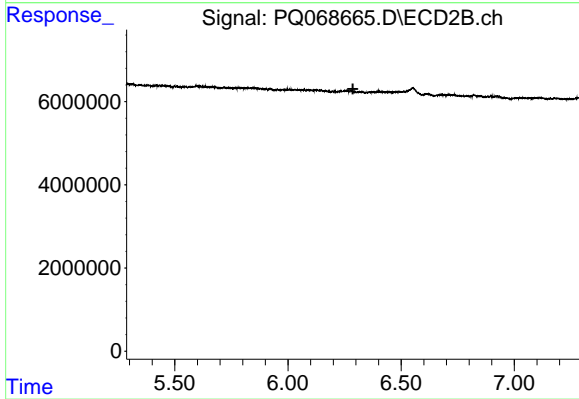
#35 AR-1260-5

R.T.: 0.000 min
 Exp R.T. : 6.286 min
 Response: 0
 Conc: N.D.



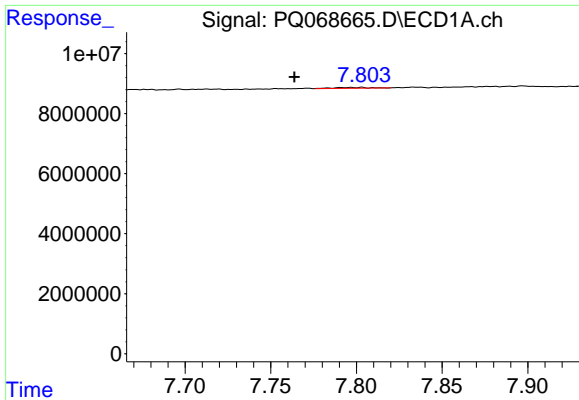
#37 AR-1262-2

R.T.: 7.193 min
 Delta R.T.: -0.040 min
 Response: 3873907
 Conc: 5.67 ng/ml



#37 AR-1262-2

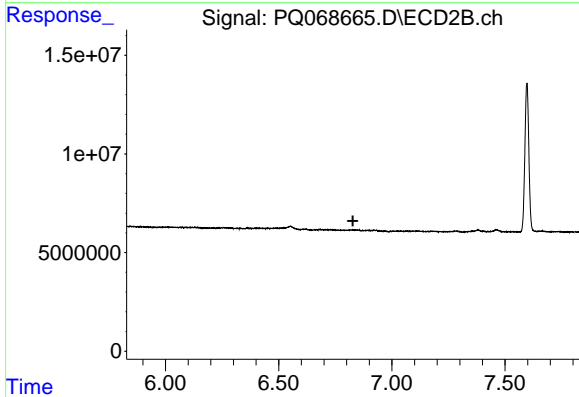
R.T.: 0.000 min
 Exp R.T. : 6.287 min
 Response: 0
 Conc: N.D.



#43 AR-1268-3

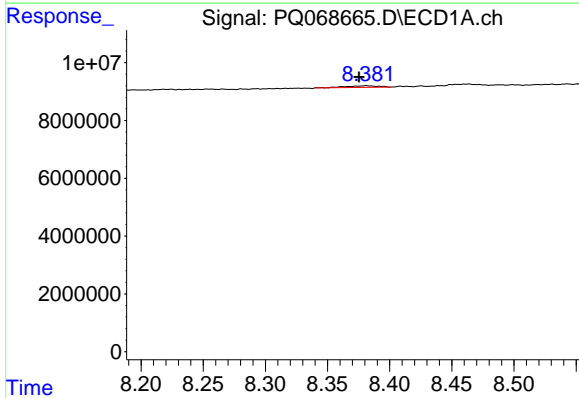
R.T.: 7.803 min
 Delta R.T.: 0.040 min
 Response: 395610
 Conc: 0.68 ng/ml

Instrument :
 ECD_Q
 ClientSampleId :
 C0AT1



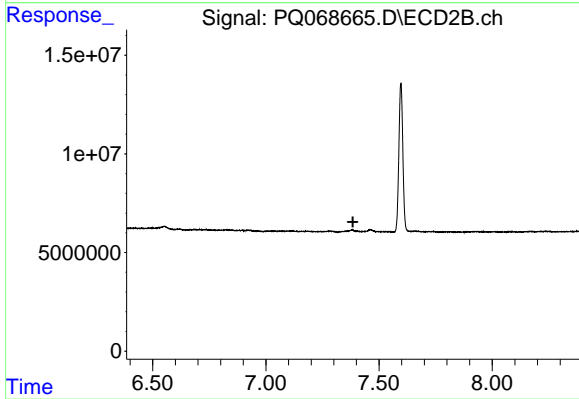
#43 AR-1268-3

R.T.: 0.000 min
 Exp R.T. : 6.828 min
 Response: 0
 Conc: N.D.



#45 AR-1268-5

R.T.: 8.381 min
 Delta R.T.: 0.006 min
 Response: 983949
 Conc: 0.61 ng/ml



#45 AR-1268-5

R.T.: 0.000 min
 Exp R.T. : 7.384 min
 Response: 0
 Conc: N.D.