

Data Path : Z:\pestpcbsrv\HPCHEM1\ECD_Q\Data\PQ091818\
 Data File : PQ031977.D
 Signal(s) : Signal #1: ECD1A.ch Signal #2: ECD2B.ch
 Acq On : 18 Sep 2018 14:12
 Operator : SM\SJ
 Sample : AR1254ICC500
 Misc :
 ALS Vial : 12 Sample Multiplier: 1

Instrument :
 ECD_Q
 ClientSampleId :

Integration File signal 1: autoint1.e
 Integration File signal 2: autoint2.e
 Quant Time: Sep 19 01:50:38 2018
 Quant Method : Z:\pestpcbsrv\HPCHEM1\ECD_Q\Method\PQ091818.M
 Quant Title : GC EXTRACTABLES
 QLast Update : Wed Sep 19 01:50:30 2018
 Response via : Initial Calibration
 Integrator: ChemStation

Volume Inj. : 2 µl
 Signal #1 Phase : ZB-MR2 Signal #2 Phase: ZB-MR2
 Signal #1 Info : 30Mx0.32mmx 0.50µ Signal #2 Info : 30M x 0.32mm x 0.25µm

Compound	RT#1	RT#2	Resp#1	Resp#2	ng/ml	ng/ml
System Monitoring Compounds						
1) SA Tetrachlo...	4.594	3.873	132.9E6	119.8E6	55.696	57.664
2) SA Decachlor...	10.451	8.952	114.6E6	105.0E6	53.493	52.930
Target Compounds						
4) L1 AR-1016-2	0.000	4.972	0	237383	N.D.	3.518 #
5) L1 AR-1016-3	5.772	4.972	610328	237383	8.275	2.541 #
7) L1 AR-1016-5	6.252	5.425	17013325	16550072	312.420	316.675
26) L6 AR-1254-1	6.847	5.924	82907696	60117836	500.000	500.000
27) L6 AR-1254-2	7.131	6.242	50858766	49414990	500.000	500.000
28) L6 AR-1254-3	7.217	6.559	90931953	62703597	500.000	500.000
29) L6 AR-1254-4	7.503	6.878	66624391	43980775	500.000	500.000
30) L6 AR-1254-5	7.779	6.979	51122944	86851892	500.000	500.000
31) L7 AR-1260-1	7.379	6.461	34758563	45889217	297.997	428.297 #
32) L7 AR-1260-2	7.635	6.647	39457301	36324456	294.032	280.835
33) L7 AR-1260-3	7.923	6.804	73181747	37698270	472.294	312.397 #
34) L7 AR-1260-4	8.220	7.277	29360790	3939145	257.018	40.215 #
35) L7 AR-1260-5	8.560	7.514	9887511	8932365	43.406	37.405
36) L8 AR-1262-1	7.273	6.332	8209487	100.7E6	138.865	1911.830 #
37) L8 AR-1262-2	8.054	7.050	3568253	8853076	70.789	175.471 #
38) L8 AR-1262-3	8.314	7.375	4484124	2701962	78.874	49.464 #
39) L8 AR-1262-4	8.956	7.864	2563467	9425429	22.366	105.456 #
41) L9 AR-1268-1	7.986	7.050	10246673	8853076	195.033	175.692
42) L9 AR-1268-2	8.220	7.864	29360790	9425429	431.126	35.507 #
43) L9 AR-1268-3	8.905	0.000	8829523	0	30.334	N.D. #

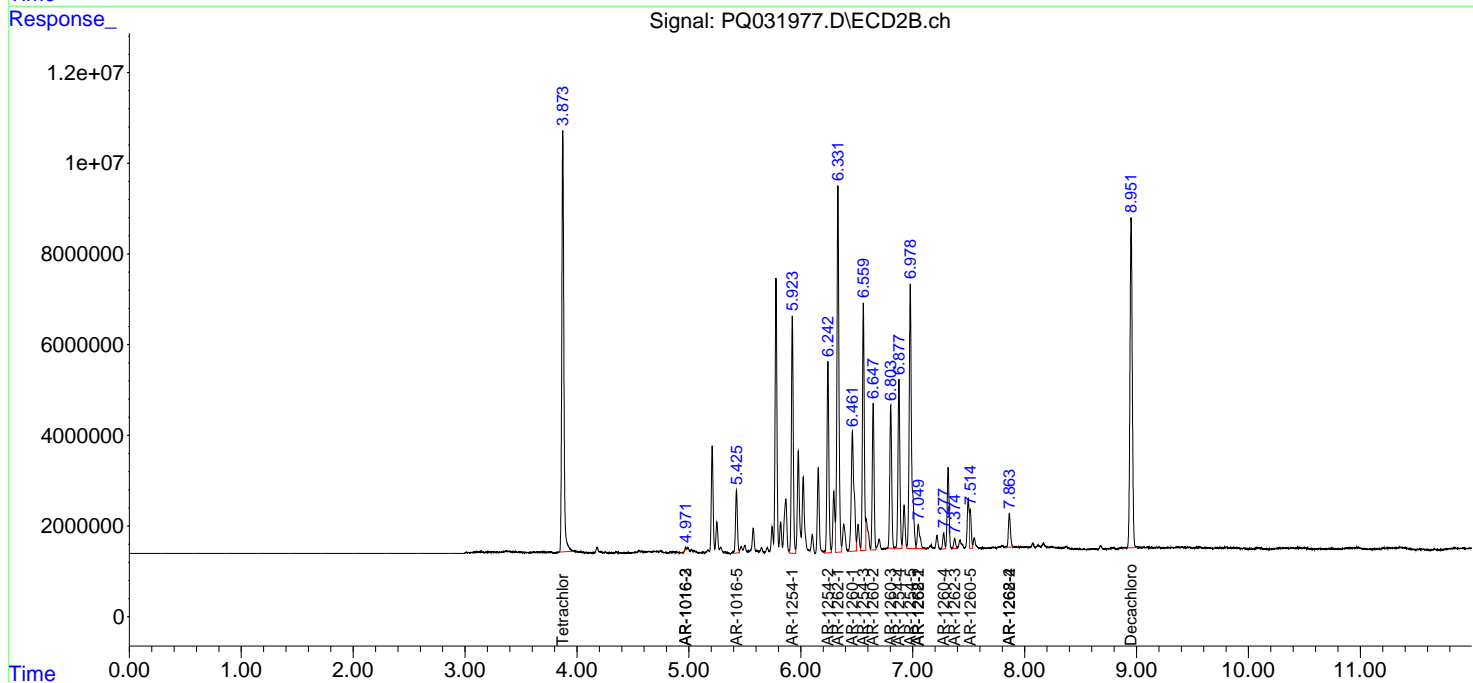
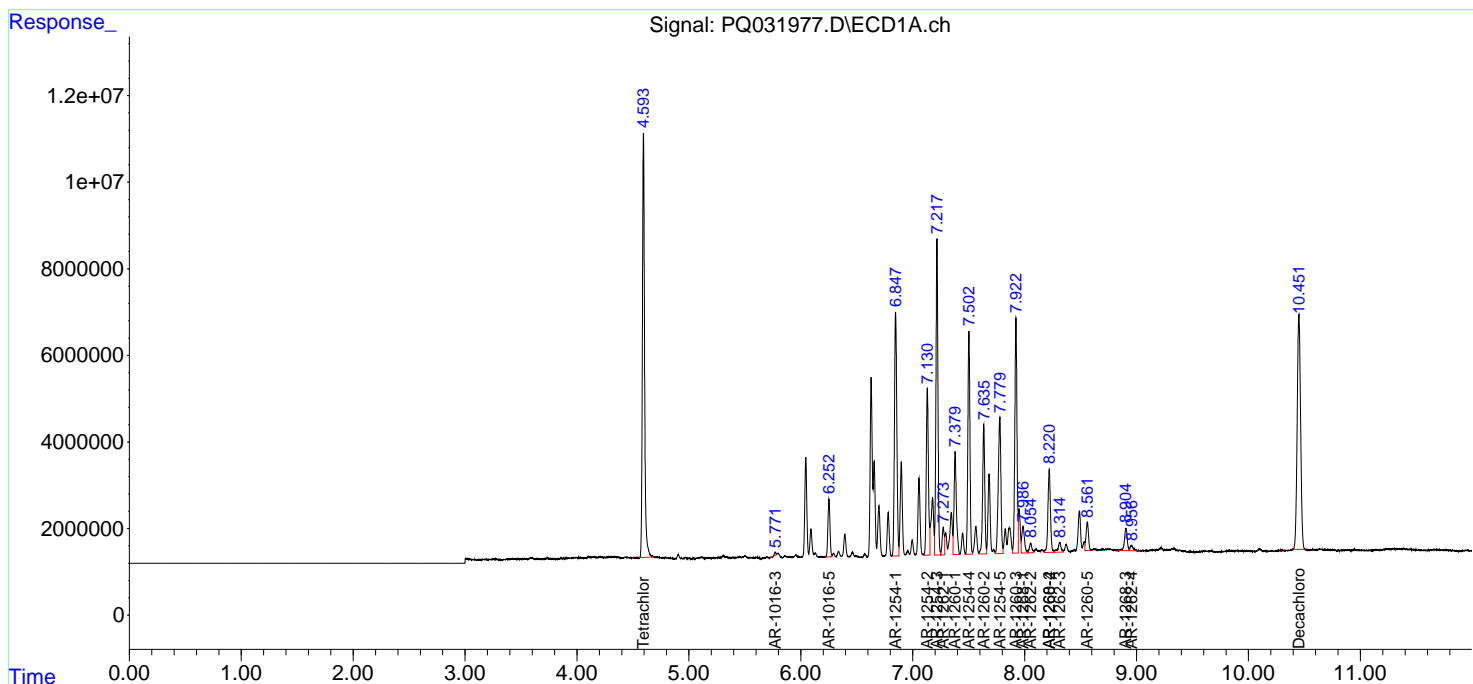
(f)=RT Delta > 1/2 Window (#)=Amounts differ by > 25% (m)=manual int.

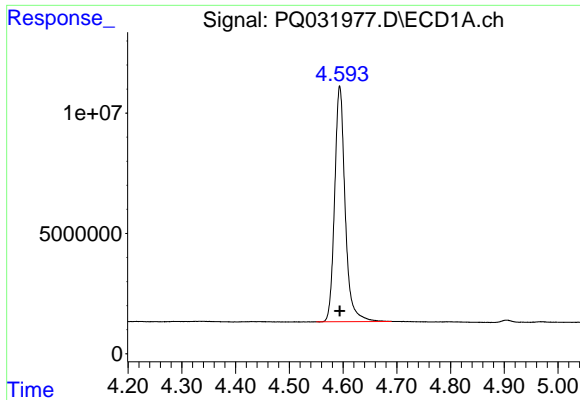
Data Path : Z:\pestpcbsrv\HPCHEM1\ECD_Q\Data\PQ091818\
 Data File : PQ031977.D
 Signal(s) : Signal #1: ECD1A.ch Signal #2: ECD2B.ch
 Acq On : 18 Sep 2018 14:12
 Operator : SM\SJ
 Sample : AR1254ICC500
 Misc :
 ALS Vial : 12 Sample Multiplier: 1

Instrument :
 ECD_Q
 ClientSampled :

Integration File signal 1: autoint1.e
 Integration File signal 2: autoint2.e
 Quant Time: Sep 19 01:50:38 2018
 Quant Method : Z:\pestpcbsrv\HPCHEM1\ECD_Q\Method\PQ091818.M
 Quant Title : GC EXTRACTABLES
 QLast Update : Wed Sep 19 01:50:30 2018
 Response via : Initial Calibration
 Integrator: ChemStation

Volume Inj. : 2 µl
 Signal #1 Phase : ZB-MR1 Signal #2 Phase: ZB-MR2
 Signal #1 Info : 30Mx0.32mmx 0.50µ Signal #2 Info : 30M x 0.32mm x 0.25µm

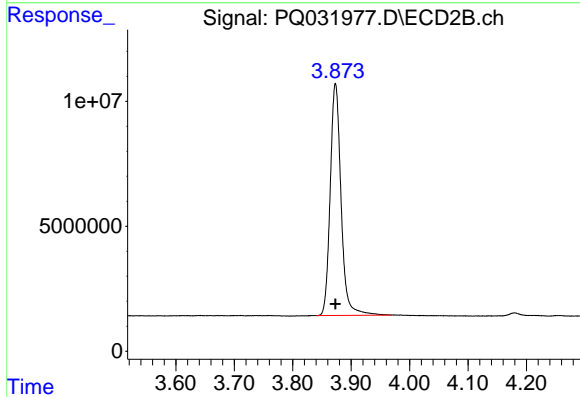




#1 Tetrachloro-m-xylene

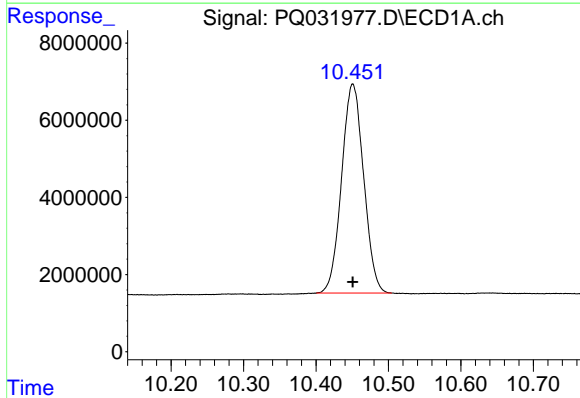
R.T.: 4.594 min
 Delta R.T.: 0.000 min
 Response: 132940112
 Conc: 55.70 ng/ml

Instrument :
 ECD_Q
 ClientSampleId :



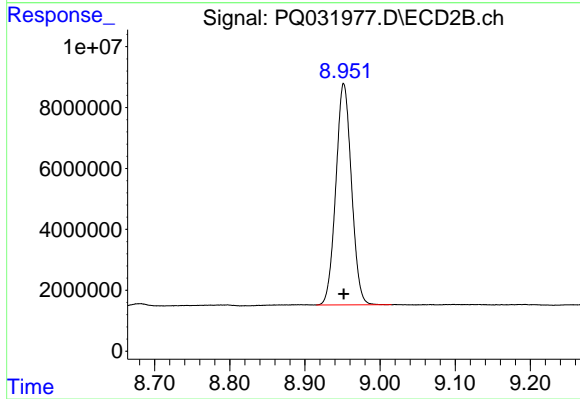
#1 Tetrachloro-m-xylene

R.T.: 3.873 min
 Delta R.T.: 0.000 min
 Response: 119803357
 Conc: 57.66 ng/ml



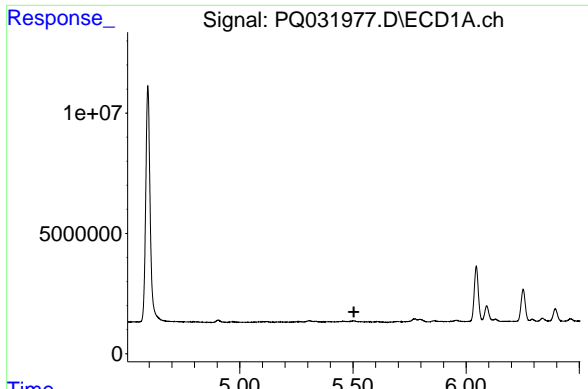
#2 Decachlorobiphenyl

R.T.: 10.451 min
 Delta R.T.: 0.000 min
 Response: 114561910
 Conc: 53.49 ng/ml



#2 Decachlorobiphenyl

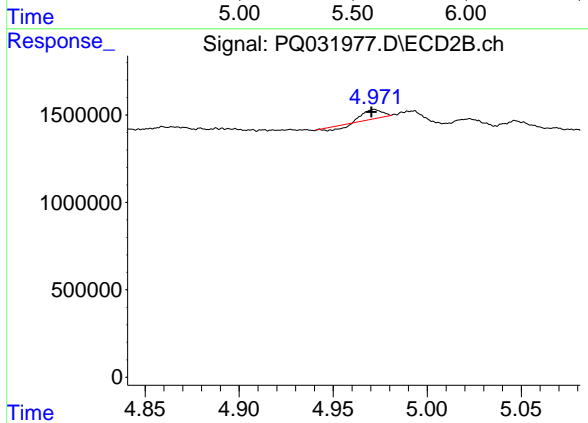
R.T.: 8.952 min
 Delta R.T.: 0.000 min
 Response: 105014683
 Conc: 52.93 ng/ml



#4 AR-1016-2

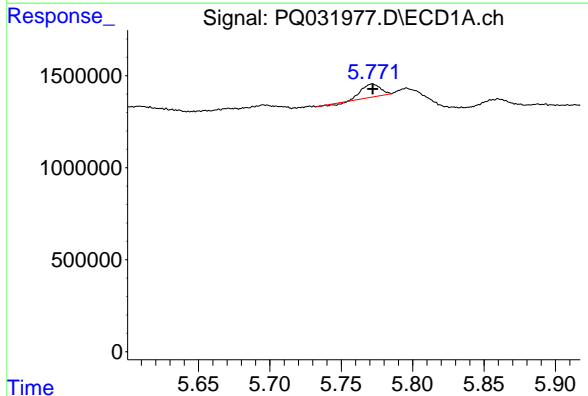
R.T.: 0.000 min
 Exp R.T.: 5.504 min
 Response: 0
 Conc: N.D.

Instrument :
 ECD_Q
 ClientSampled :



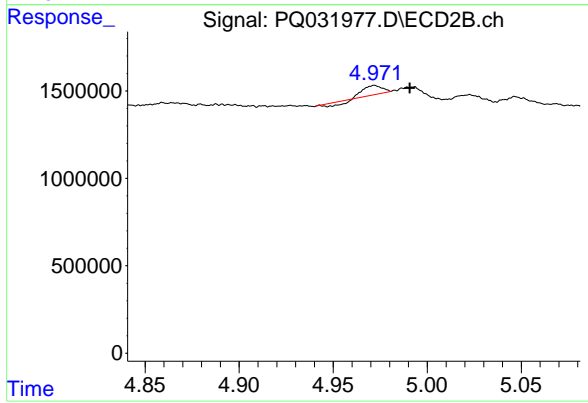
#4 AR-1016-2

R.T.: 4.972 min
 Delta R.T.: 0.002 min
 Response: 237383
 Conc: 3.52 ng/ml



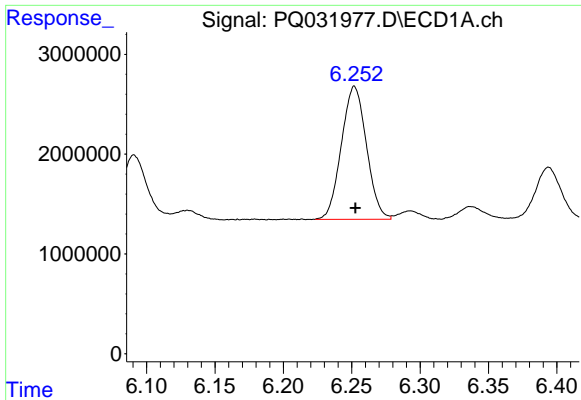
#5 AR-1016-3

R.T.: 5.772 min
 Delta R.T.: 0.000 min
 Response: 610328
 Conc: 8.28 ng/ml



#5 AR-1016-3

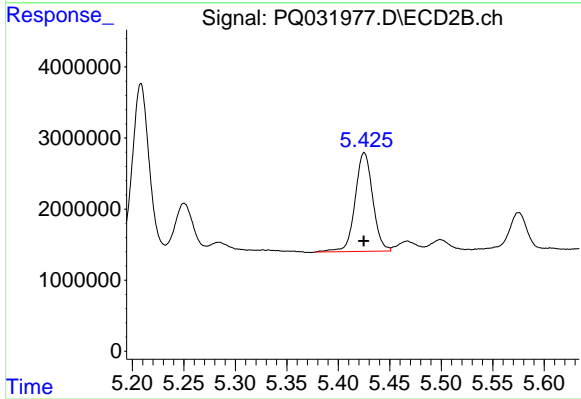
R.T.: 4.972 min
 Delta R.T.: -0.019 min
 Response: 237383
 Conc: 2.54 ng/ml



#7 AR-1016-5

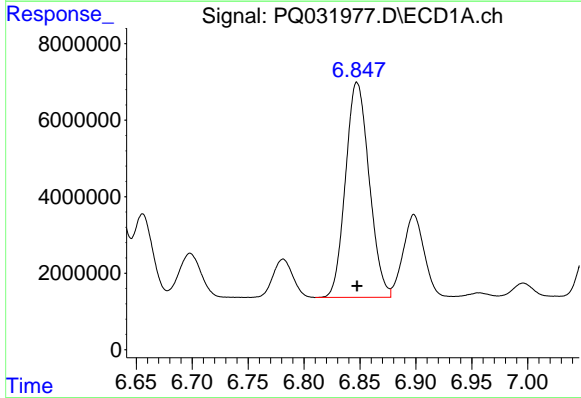
R.T.: 6.252 min
Delta R.T.: 0.000 min
Response: 17013325
Conc: 312.42 ng/ml

Instrument :
ECD_Q
ClientSampled :



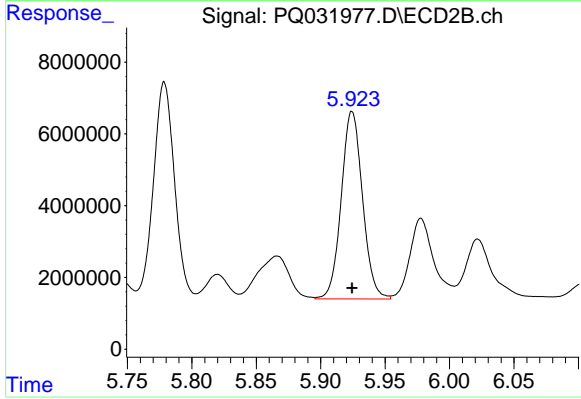
#7 AR-1016-5

R.T.: 5.425 min
Delta R.T.: 0.000 min
Response: 16550072
Conc: 316.67 ng/ml



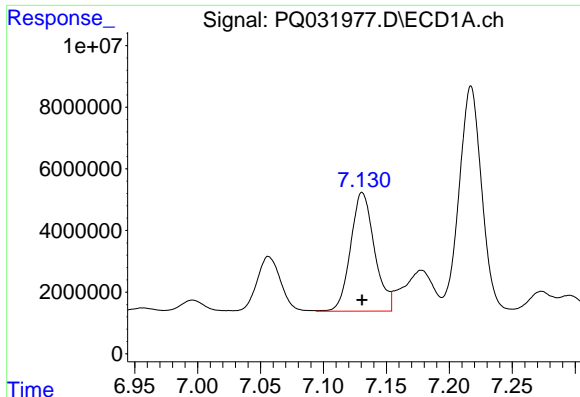
#26 AR-1254-1

R.T.: 6.847 min
Delta R.T.: 0.000 min
Response: 82907696
Conc: 500.00 ng/ml



#26 AR-1254-1

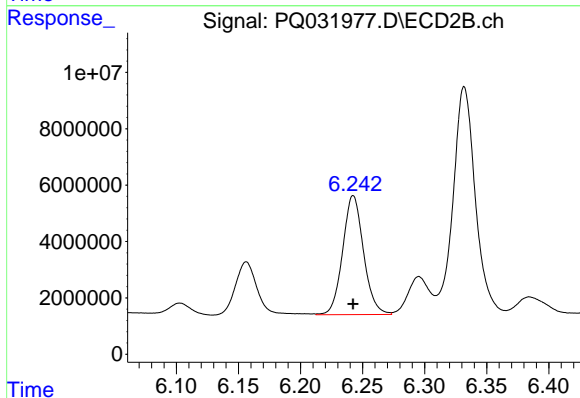
R.T.: 5.924 min
Delta R.T.: 0.000 min
Response: 60117836
Conc: 500.00 ng/ml



#27 AR-1254-2

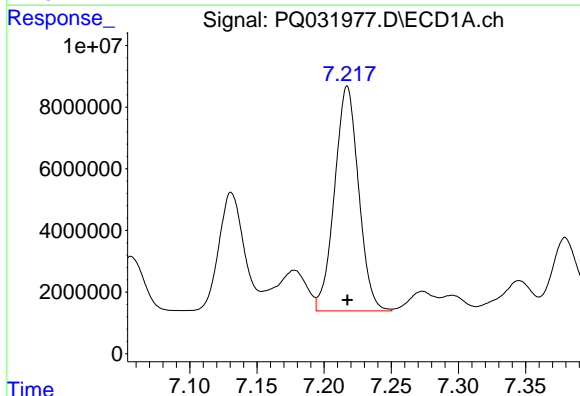
R.T.: 7.131 min
 Delta R.T.: 0.000 min
 Response: 50858766
 Conc: 500.00 ng/ml

Instrument :
 ECD_Q
 ClientSampled :



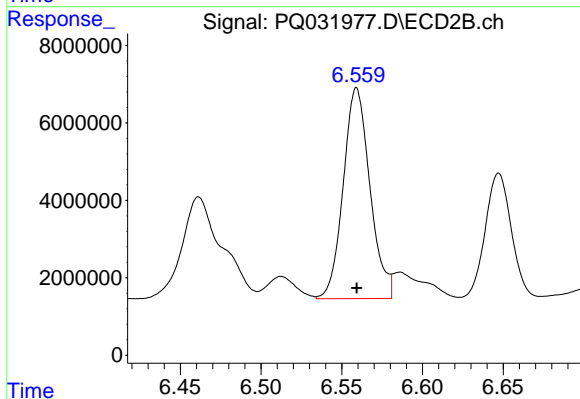
#27 AR-1254-2

R.T.: 6.242 min
 Delta R.T.: 0.000 min
 Response: 49414990
 Conc: 500.00 ng/ml



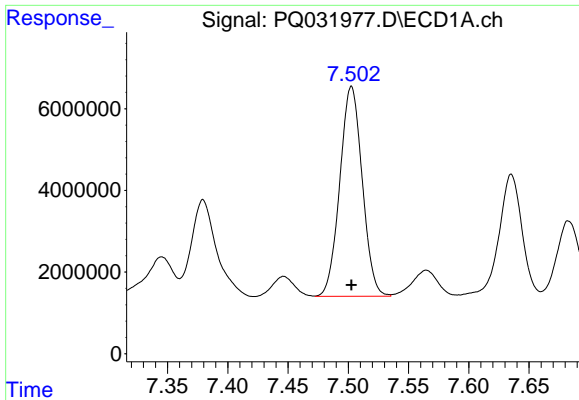
#28 AR-1254-3

R.T.: 7.217 min
 Delta R.T.: 0.000 min
 Response: 90931953
 Conc: 500.00 ng/ml



#28 AR-1254-3

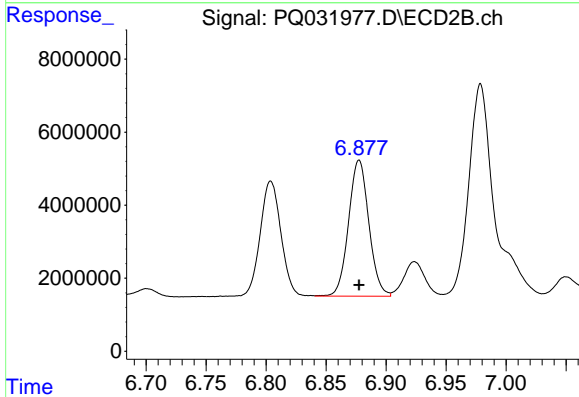
R.T.: 6.559 min
 Delta R.T.: 0.000 min
 Response: 62703597
 Conc: 500.00 ng/ml



#29 AR-1254-4

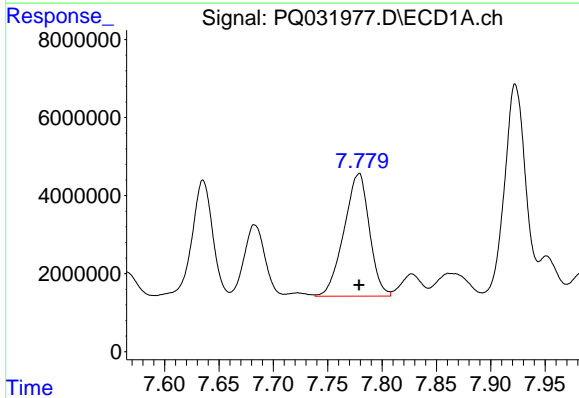
R.T.: 7.503 min
Delta R.T.: 0.000 min
Response: 66624391
Conc: 500.00 ng/ml

Instrument :
ECD_Q
ClientSampleId :



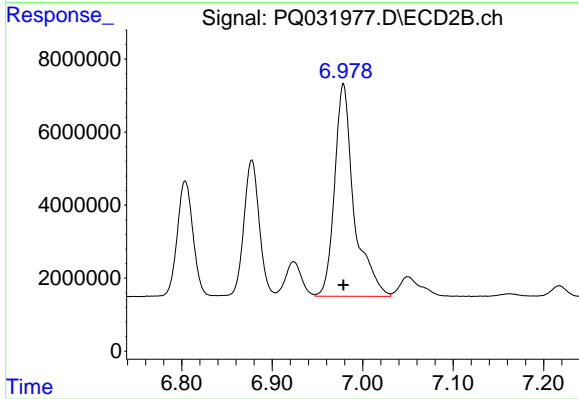
#29 AR-1254-4

R.T.: 6.878 min
Delta R.T.: 0.000 min
Response: 43980775
Conc: 500.00 ng/ml



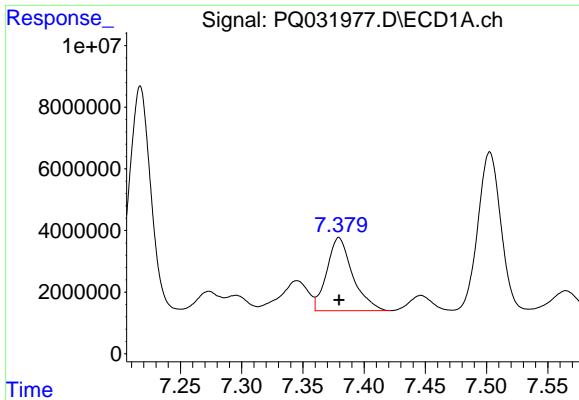
#30 AR-1254-5

R.T.: 7.779 min
Delta R.T.: 0.000 min
Response: 51122944
Conc: 500.00 ng/ml



#30 AR-1254-5

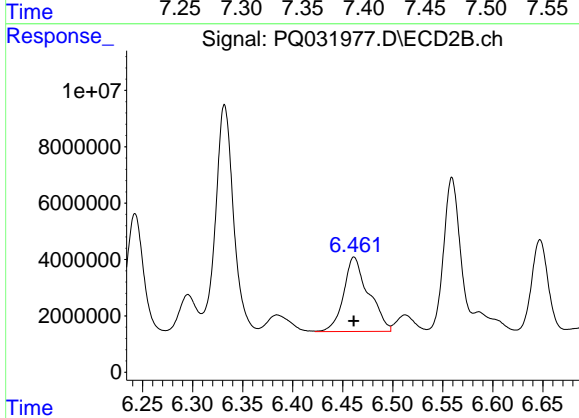
R.T.: 6.979 min
Delta R.T.: 0.000 min
Response: 86851892
Conc: 500.00 ng/ml



#31 AR-1260-1

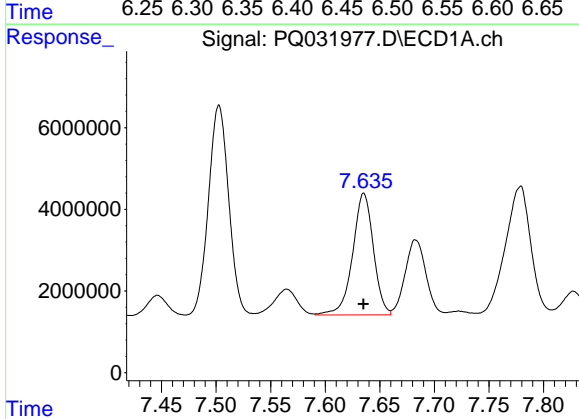
R.T.: 7.379 min
 Delta R.T.: 0.000 min
 Response: 34758563
 Conc: 298.00 ng/ml

Instrument :
 ECD_Q
 ClientSampleId :



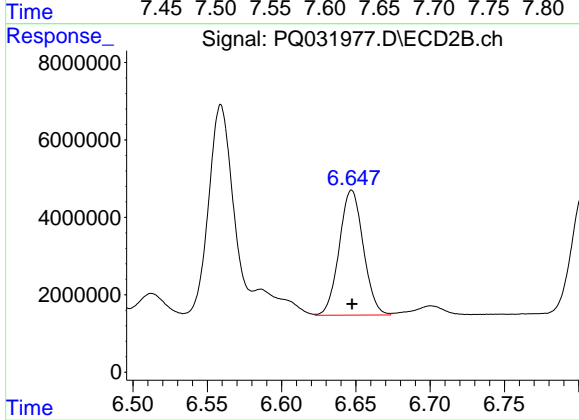
#31 AR-1260-1

R.T.: 6.461 min
 Delta R.T.: 0.000 min
 Response: 45889217
 Conc: 428.30 ng/ml



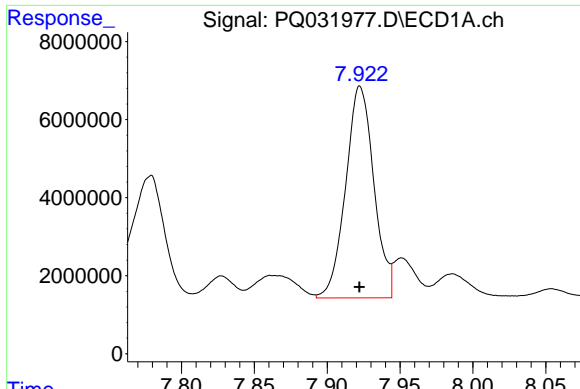
#32 AR-1260-2

R.T.: 7.635 min
 Delta R.T.: 0.000 min
 Response: 39457301
 Conc: 294.03 ng/ml



#32 AR-1260-2

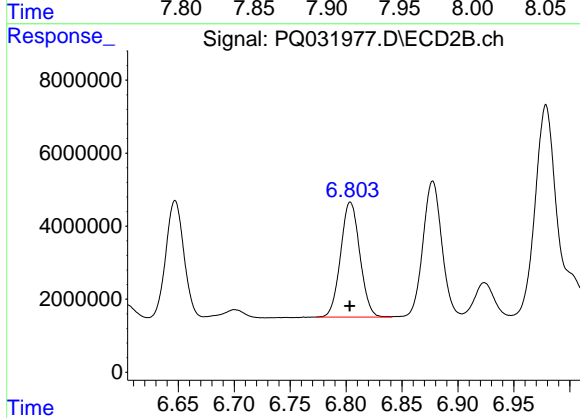
R.T.: 6.647 min
 Delta R.T.: 0.000 min
 Response: 36324456
 Conc: 280.83 ng/ml



#33 AR-1260-3

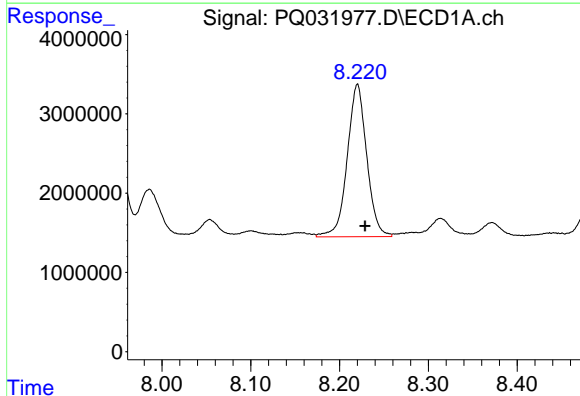
R.T.: 7.923 min
 Delta R.T.: 0.000 min
 Response: 73181747
 Conc: 472.29 ng/ml

Instrument :
 ECD_Q
 ClientSampled :



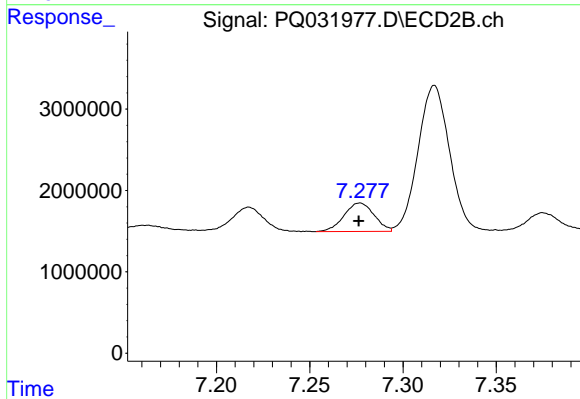
#33 AR-1260-3

R.T.: 6.804 min
 Delta R.T.: 0.000 min
 Response: 37698270
 Conc: 312.40 ng/ml



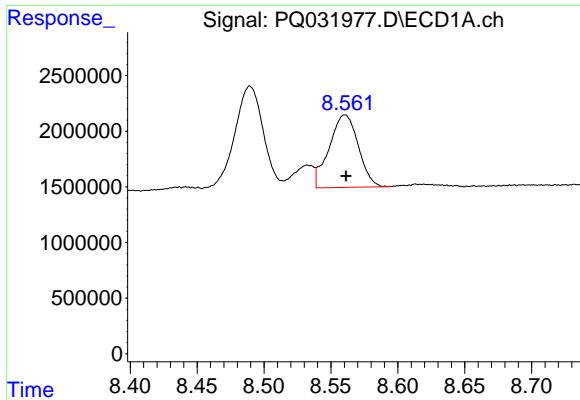
#34 AR-1260-4

R.T.: 8.220 min
 Delta R.T.: -0.009 min
 Response: 29360790
 Conc: 257.02 ng/ml



#34 AR-1260-4

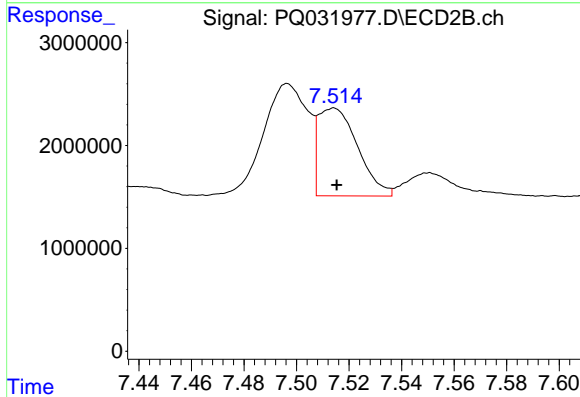
R.T.: 7.277 min
 Delta R.T.: 0.000 min
 Response: 3939145
 Conc: 40.22 ng/ml



#35 AR-1260-5

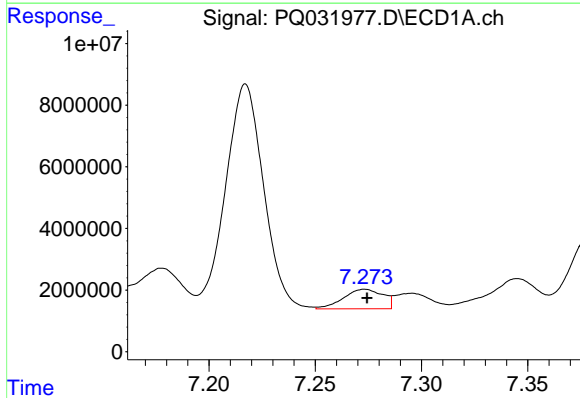
R.T.: 8.560 min
 Delta R.T.: 0.000 min
 Response: 9887511
 Conc: 43.41 ng/ml

Instrument :
 ECD_Q
 ClientSampled :



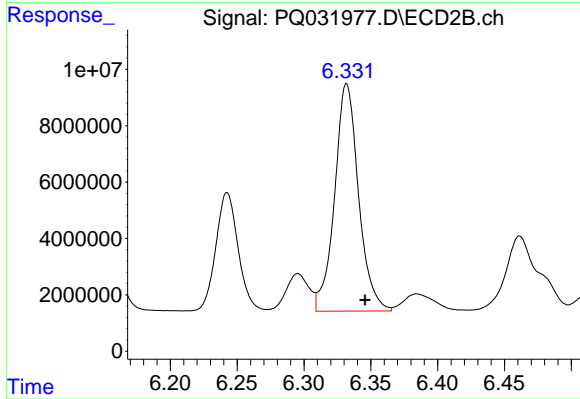
#35 AR-1260-5

R.T.: 7.514 min
 Delta R.T.: -0.001 min
 Response: 8932365
 Conc: 37.41 ng/ml



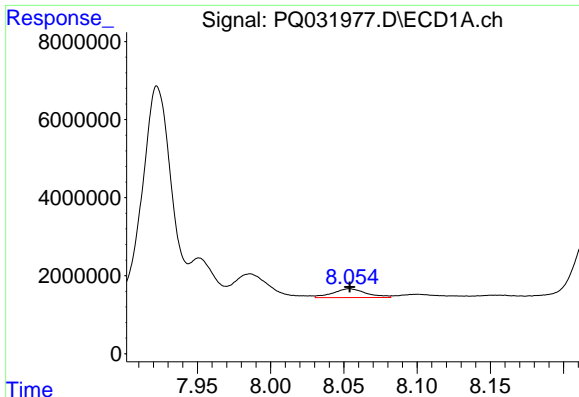
#36 AR-1262-1

R.T.: 7.273 min
 Delta R.T.: -0.001 min
 Response: 8209487
 Conc: 138.87 ng/ml



#36 AR-1262-1

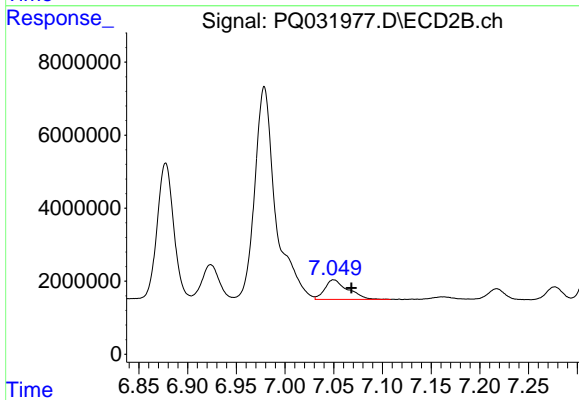
R.T.: 6.332 min
 Delta R.T.: -0.014 min
 Response: 100680304
 Conc: 1911.83 ng/ml



#37 AR-1262-2

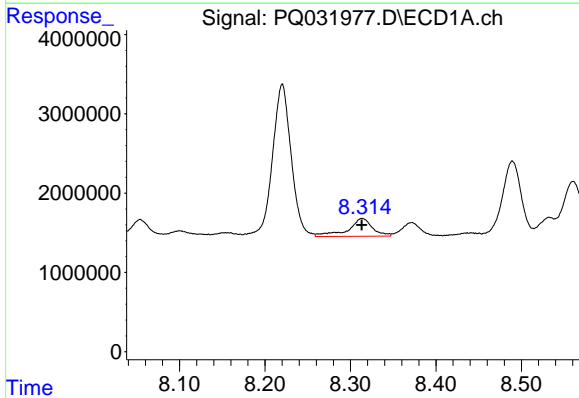
R.T.: 8.054 min
 Delta R.T.: 0.000 min
 Response: 3568253
 Conc: 70.79 ng/ml

Instrument :
 ECD_Q
 ClientSampled :



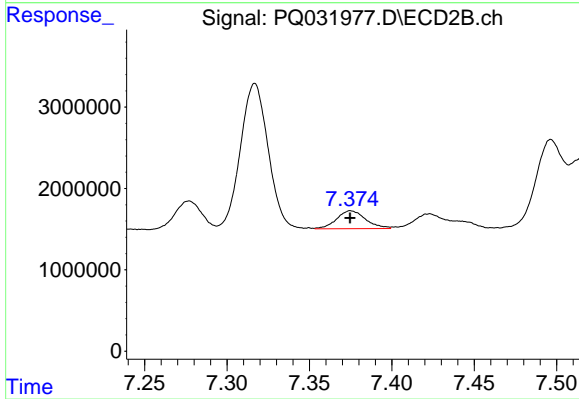
#37 AR-1262-2

R.T.: 7.050 min
 Delta R.T.: -0.018 min
 Response: 8853076
 Conc: 175.47 ng/ml



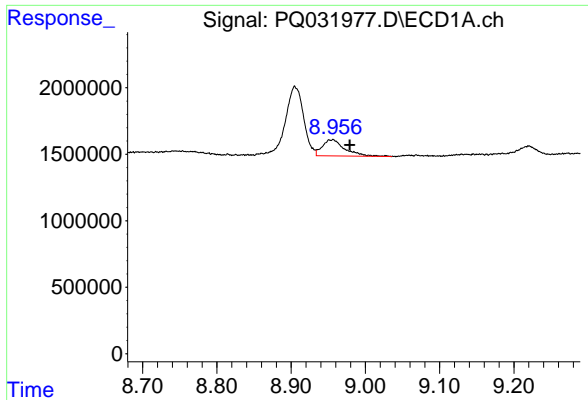
#38 AR-1262-3

R.T.: 8.314 min
 Delta R.T.: 0.000 min
 Response: 4484124
 Conc: 78.87 ng/ml



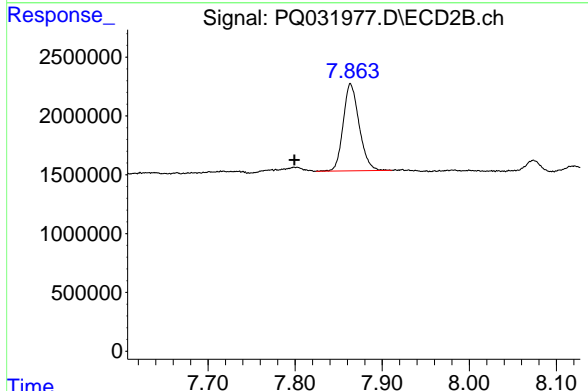
#38 AR-1262-3

R.T.: 7.375 min
 Delta R.T.: 0.000 min
 Response: 2701962
 Conc: 49.46 ng/ml

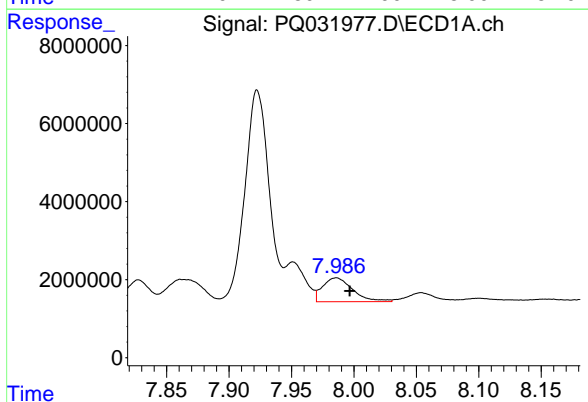


#39 AR-1262-4
 R.T.: 8.956 min
 Delta R.T.: -0.022 min
 Response: 2563467
 Conc: 22.37 ng/ml

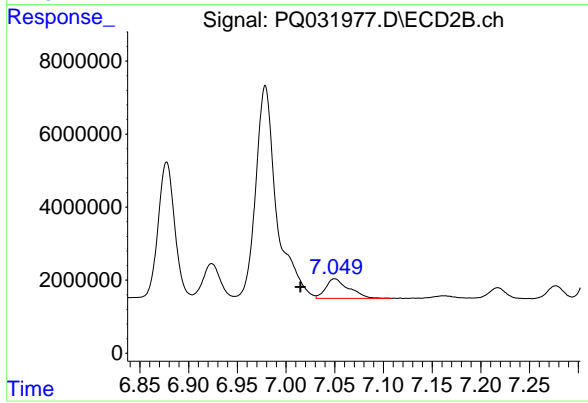
Instrument :
 ECD_Q
 ClientSampleId :



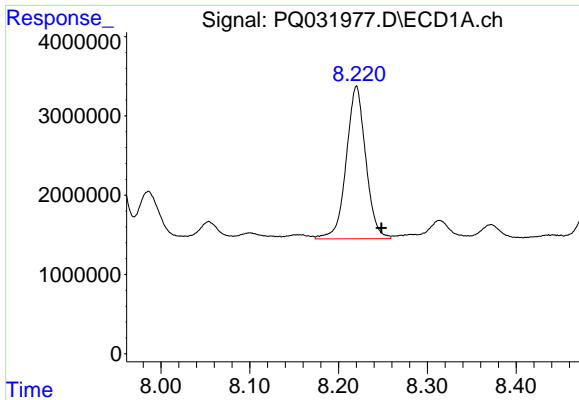
#39 AR-1262-4
 R.T.: 7.864 min
 Delta R.T.: 0.064 min
 Response: 9425429
 Conc: 105.46 ng/ml



#41 AR-1268-1
 R.T.: 7.986 min
 Delta R.T.: -0.011 min
 Response: 10246673
 Conc: 195.03 ng/ml



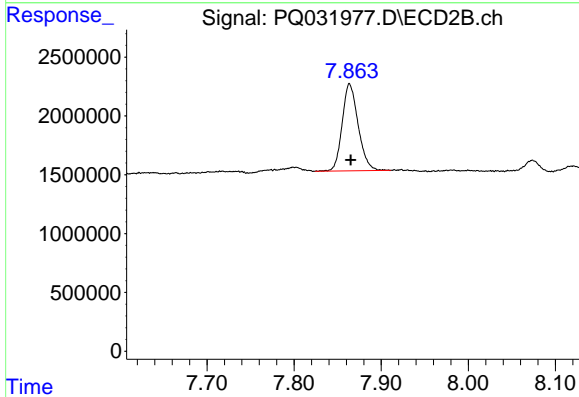
#41 AR-1268-1
 R.T.: 7.050 min
 Delta R.T.: 0.035 min
 Response: 8853076
 Conc: 175.69 ng/ml



#42 AR-1268-2

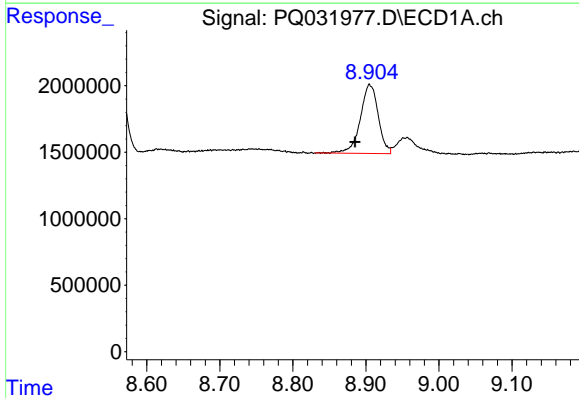
R.T.: 8.220 min
 Delta R.T.: -0.028 min
 Response: 29360790
 Conc: 431.13 ng/ml

Instrument :
 ECD_Q
 ClientSampleId :



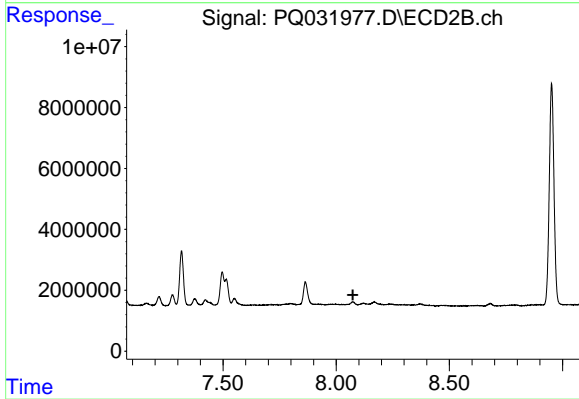
#42 AR-1268-2

R.T.: 7.864 min
 Delta R.T.: -0.001 min
 Response: 9425429
 Conc: 35.51 ng/ml



#43 AR-1268-3

R.T.: 8.905 min
 Delta R.T.: 0.020 min
 Response: 8829523
 Conc: 30.33 ng/ml



#43 AR-1268-3

R.T.: 0.000 min
 Exp R.T. : 8.074 min
 Response: 0
 Conc: N.D.