

Data Path : Z:\pestpcbsrv\HPCHEM1\ECD_Q\Data\PQ091819\
 Data File : PQ043650.D
 Signal(s) : Signal #1: ECD1A.ch Signal #2: ECD2B.ch
 Acq On : 18 Sep 2019 09:09
 Operator : SM\AJ
 Sample : AR1660CCC400
 Misc :
 ALS Vial : 3 Sample Multiplier: 1

Instrument :
 ECD_Q
 ClientSampled :

Integration File signal 1: autoint1.e
 Integration File signal 2: autoint2.e
 Quant Time: Sep 18 10:29:05 2019
 Quant Method : Z:\pestpcbsrv\HPCHEM1\ECD_Q\Method\PQ091719CLP.M
 Quant Title : GC EXTRACTABLES
 QLast Update : Wed Sep 18 08:09:29 2019
 Response via : Initial Calibration
 Integrator: ChemStation

Volume Inj. : 1 µl
 Signal #1 Phase : ZB MR1 Signal #2 Phase: ZB MR2
 Signal #1 Info : 30Mx0.32mmx 0.5µm Signal #2 Info : 30M x 0.32mm x 0.25µm

Compound	RT#1	RT#2	Resp#1	Resp#2	ng/ml	ng/ml
System Monitoring Compounds						
1) SA Tetrachlo...	5.241	4.417	31702282	14646746	14.821	15.978
2) SA Decachlor...	11.416	9.873	378.2E6	142.2E6	48.256	46.531
Target Compounds						
3) L1 AR-1016-1	6.556	5.698	34498492	13739672	352.824	362.111
4) L1 AR-1016-2	6.580	5.719	50086723	19650317	352.450	376.309
5) L1 AR-1016-3	6.647	5.916	30164008	10721134	350.329	381.207
6) L1 AR-1016-4	6.754	5.963	27279924	8974828	372.815	382.491
7) L1 AR-1016-5	7.070	6.199	28553186	11770464	368.428	367.809
8) L2 AR-1221-1	5.481	4.678	1735342	1614747	75.821	147.857 #
9) L2 AR-1221-2	5.585	4.782	2194786	1582142	126.888	198.969 #
10) L2 AR-1221-3	5.671	4.873	12250675	6293554	203.291	229.846
11) L3 AR-1232-1	5.671	4.873	12250675	6293554	240.508	265.046
12) L3 AR-1232-2	6.262	5.719	20885798	19650317	738.227	805.003
13) L3 AR-1232-3	6.580	5.916	50086723	10721134	793.225	845.390
14) L3 AR-1232-4	6.754	6.009	27279924	10880173	834.998	973.492
15) L3 AR-1232-5	6.851	6.199	24078827	11770464	965.659	872.407
16) L4 AR-1242-1	6.556	5.698	34498492	13739672	412.343	419.377
17) L4 AR-1242-2	6.580	5.719	50086723	19650317	412.275	431.684
18) L4 AR-1242-3	6.647	5.916	30164008	10721134	410.326	442.329
19) L4 AR-1242-4	6.754	6.009	27279924	10880173	433.128	446.990
20) L4 AR-1242-5	7.538	6.582	5253267	9632480	57.394	274.562 #
21) L5 AR-1248-1	6.556	5.698	34498492	13739672	489.492	497.944
22) L5 AR-1248-2	6.851	5.963	24078827	8974828	237.019	238.423
23) L5 AR-1248-3	7.070	6.009	28553186	10880173	237.050	282.833
24) L5 AR-1248-4	7.468	6.199	28052484	11770464	175.365	250.078 #
25) L5 AR-1248-5	7.538	6.626	5253267	1913457	33.652	36.342
26) L6 AR-1254-1	7.468	6.582	28052484	9632480	199.547	132.714 #
27) L6 AR-1254-2	7.696	6.739	27283164	9404238	115.023	143.108
28) L6 AR-1254-3	8.080	7.183	18244095	24043942	63.649	202.588 #
29) L6 AR-1254-4	8.374	7.407	14598593	3465155	60.710	40.409 #
30) L6 AR-1254-5	8.805	7.840	149.9E6	47627276	473.482	387.094
31) L7 AR-1260-1	8.248	7.304	75894125	29159561	398.806	416.959
32) L7 AR-1260-2	8.512	7.498	101.6E6	38378661	415.750	425.831
33) L7 AR-1260-3	8.881	7.661	86943006	36422059	436.062	421.925
34) L7 AR-1260-4	9.122	8.148	112.9E6	34681358	449.384	445.365
35) L7 AR-1260-5	9.465	8.393	258.6E6	95344308	456.740	451.686
36) L8 AR-1262-1	8.881	7.934	86943006	18443413	266.387	370.214 #
37) L8 AR-1262-2	9.465	8.393	258.6E6	95344308	354.044	363.722
38) L8 AR-1262-3	9.817	8.684	191.8E6	27651240	358.879	223.707 #
39) L8 AR-1262-4	9.878	8.749	121.1E6	91318950	296.200	377.907 #
40) L8 AR-1262-5	10.604	9.271	108.4E6	44658012	306.945	296.966
41) L9 AR-1268-1	9.817	8.684	191.8E6	27651240	222.690	83.051 #

Data Path : Z:\pestpcbsrv\HPCHEM1\ECD_Q\Data\PQ091819\
 Data File : PQ043650.D
 Signal(s) : Signal #1: ECD1A.ch Signal #2: ECD2B.ch
 Acq On : 18 Sep 2019 09:09
 Operator : SM\AJ
 Sample : AR1660CCC400
 Misc :
 ALS Vial : 3 Sample Multiplier: 1

Instrument :
 ECD_Q
 ClientSampleId :

Integration File signal 1: autoint1.e
 Integration File signal 2: autoint2.e
 Quant Time: Sep 18 10:29:05 2019
 Quant Method : Z:\pestpcbsrv\HPCHEM1\ECD_Q\Method\PQ091719CLP.M
 Quant Title : GC EXTRACTABLES
 QLast Update : Wed Sep 18 08:09:29 2019
 Response via : Initial Calibration
 Integrator: ChemStation

Volume Inj. : 1 µl
 Signal #1 Phase : ZB MR1 Signal #2 Phase: ZB MR2
 Signal #1 Info : 30Mx0.32mmx 0.5µm Signal #2 Info : 30M x 0.32mm x 0.25µm

	Compound	RT#1	RT#2	Resp#1	Resp#2	ng/ml	ng/ml
42)	L9 AR-1268-2	9.878	8.749	121.1E6	91318950	145.681	282.798 #
43)	L9 AR-1268-3	10.144	8.965	7064970	3290549	10.036	11.514
44)	L9 AR-1268-4	10.604	9.271	108.4E6	44658012	281.429	277.092
45)	L9 AR-1268-5	11.049	9.591	32860409	13194371	10.630	10.751

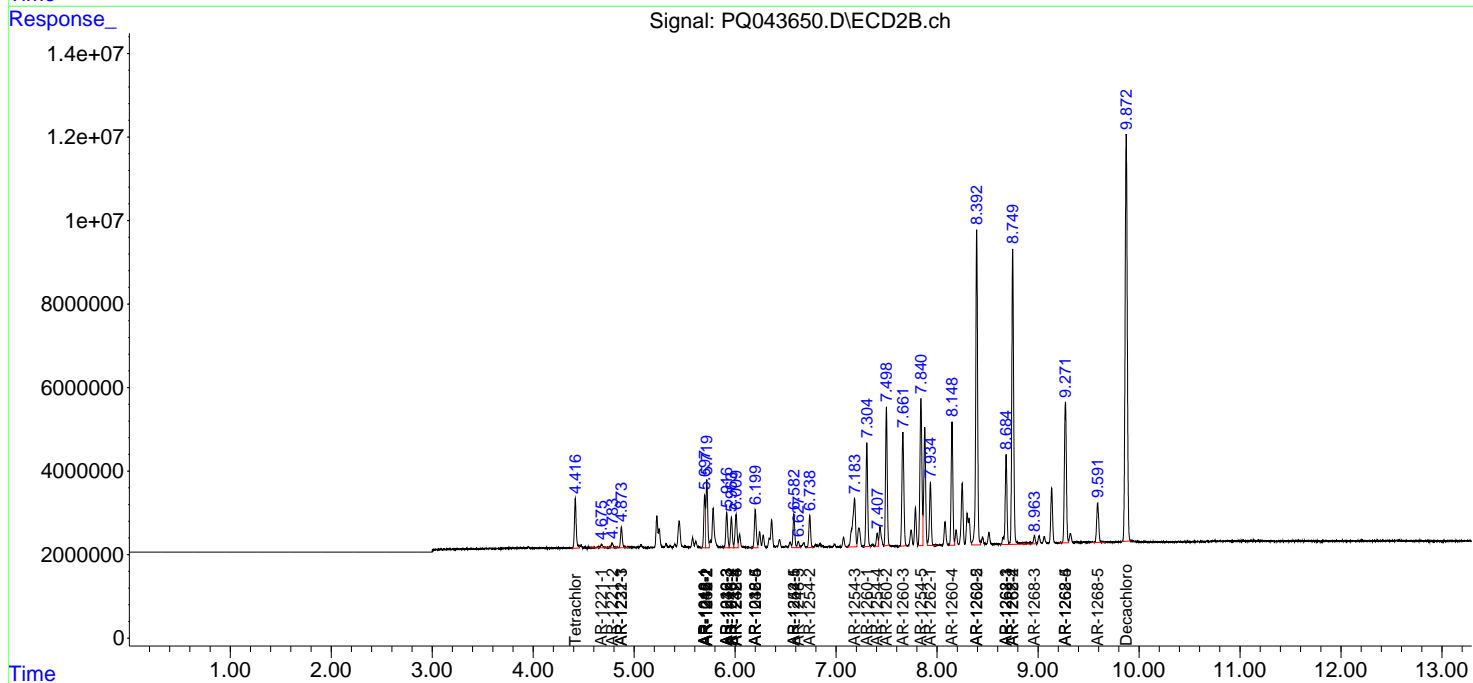
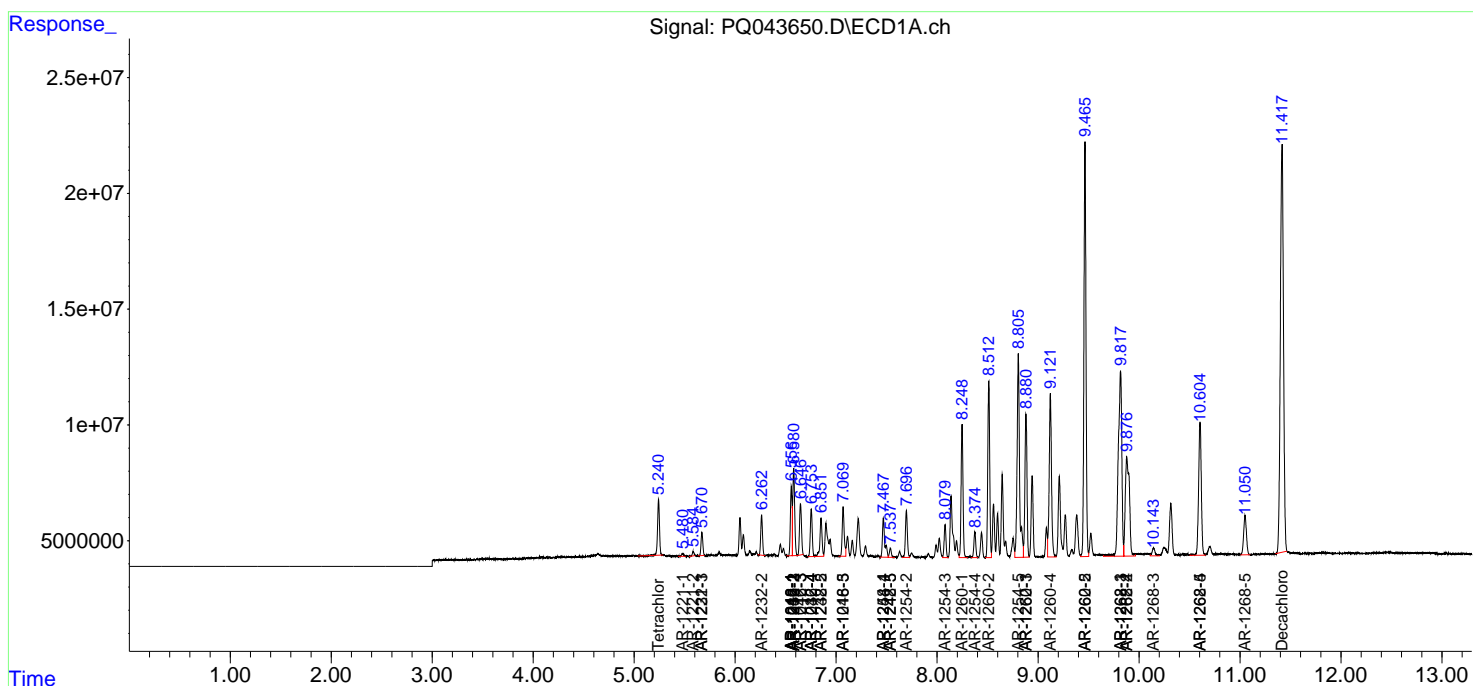
(f)=RT Delta > 1/2 Window (#)=Amounts differ by > 25% (m)=manual int.

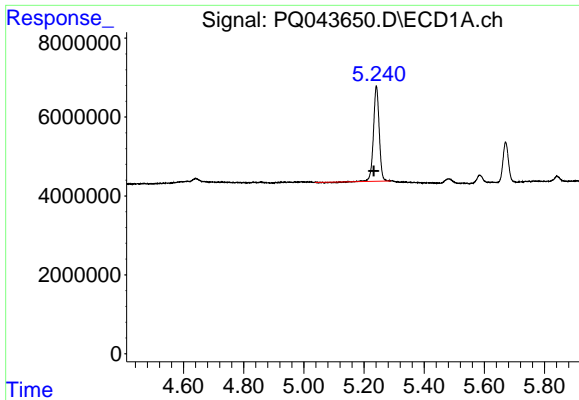
Data Path : Z:\pestpcbsrv\HPCHEM1\ECD_Q\Data\PQ091819\
 Data File : PQ043650.D
 Signal(s) : Signal #1: ECD1A.ch Signal #2: ECD2B.ch
 Acq On : 18 Sep 2019 09:09
 Operator : SM\AJ
 Sample : AR1660CCC400
 Misc :
 ALS Vial : 3 Sample Multiplier: 1

Instrument :
 ECD_Q
 ClientSampled :

Integration File signal 1: autoint1.e
 Integration File signal 2: autoint2.e
 Quant Time: Sep 18 10:29:05 2019
 Quant Method : Z:\pestpcbsrv\HPCHEM1\ECD_Q\Method\PQ091719CLP.M
 Quant Title : GC EXTRACTABLES
 QLast Update : Wed Sep 18 08:09:29 2019
 Response via : Initial Calibration
 Integrator: ChemStation

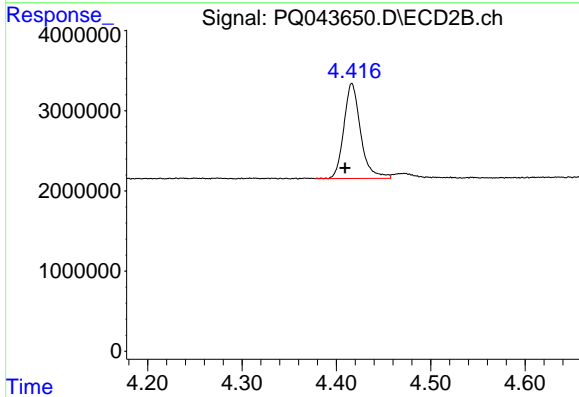
Volume Inj. : 1 µl
 Signal #1 Phase : ZB MR1 Signal #2 Phase: ZB MR2
 Signal #1 Info : 30Mx0.32mmx 0.5µm Signal #2 Info : 30M x 0.32mm x 0.25µm



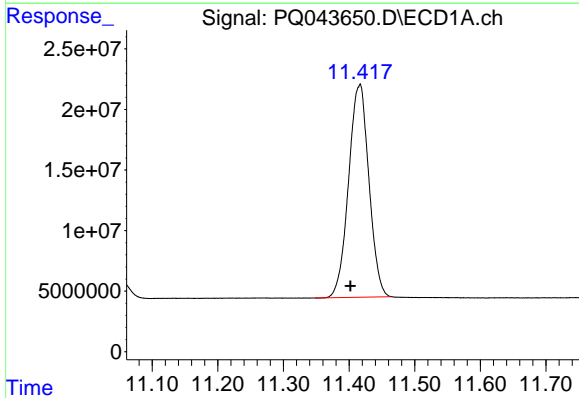


#1 Tetrachloro-m-xylene
R.T.: 5.241 min
Delta R.T.: 0.009 min
Response: 31702282
Conc: 14.82 ng/ml

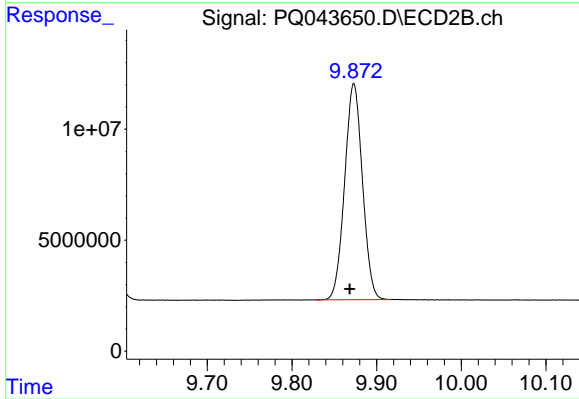
Instrument :
ECD_Q
ClientSampleId :



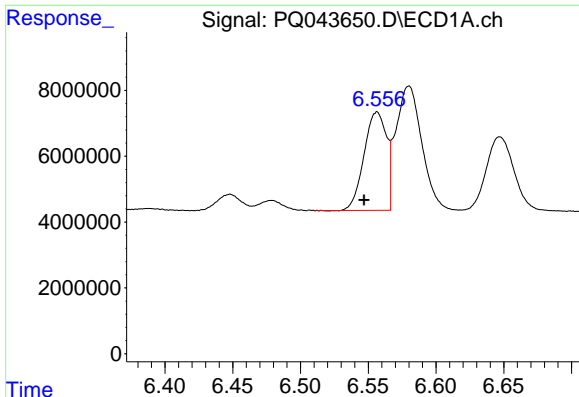
#1 Tetrachloro-m-xylene
R.T.: 4.417 min
Delta R.T.: 0.007 min
Response: 14646746
Conc: 15.98 ng/ml



#2 Decachlorobiphenyl
R.T.: 11.416 min
Delta R.T.: 0.014 min
Response: 378190226
Conc: 48.26 ng/ml



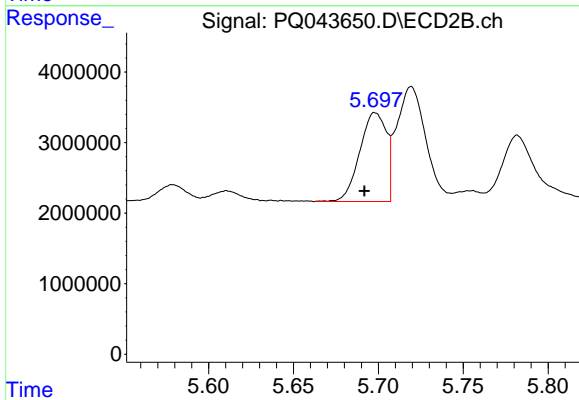
#2 Decachlorobiphenyl
R.T.: 9.873 min
Delta R.T.: 0.005 min
Response: 142168292
Conc: 46.53 ng/ml



#3 AR-1016-1

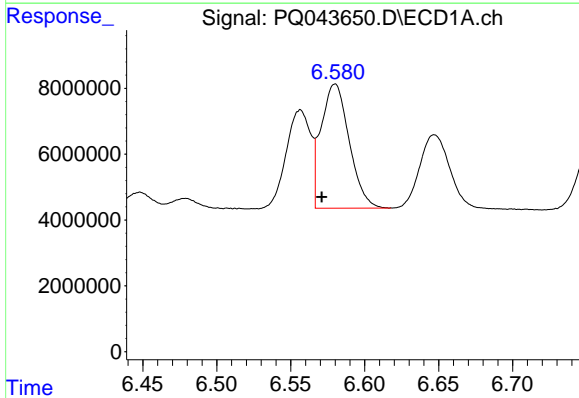
R.T.: 6.556 min
 Delta R.T.: 0.009 min
 Response: 34498492
 Conc: 352.82 ng/ml

Instrument :
 ECD_Q
 ClientSampleId :



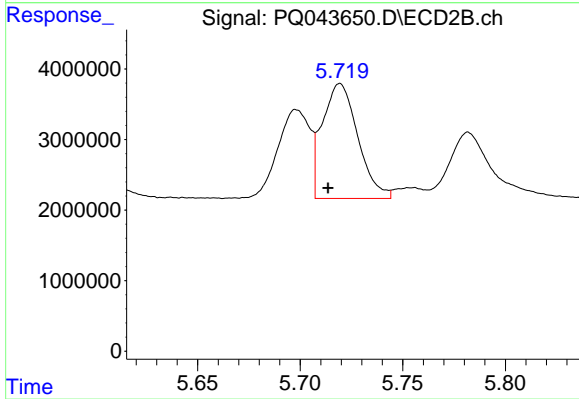
#3 AR-1016-1

R.T.: 5.698 min
 Delta R.T.: 0.007 min
 Response: 13739672
 Conc: 362.11 ng/ml



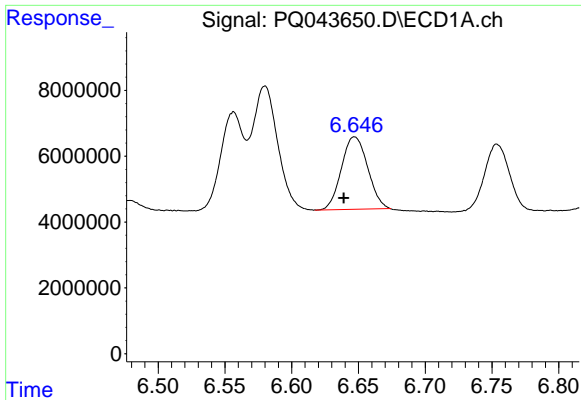
#4 AR-1016-2

R.T.: 6.580 min
 Delta R.T.: 0.009 min
 Response: 50086723
 Conc: 352.45 ng/ml



#4 AR-1016-2

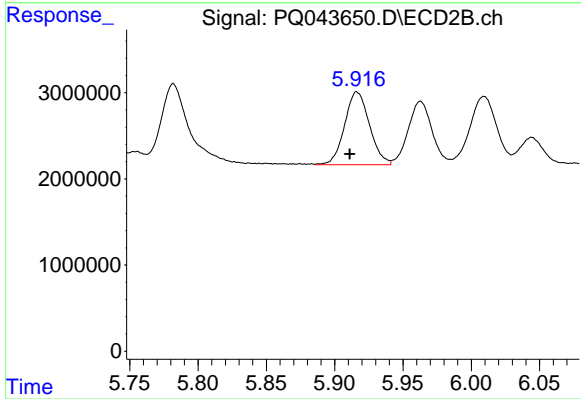
R.T.: 5.719 min
 Delta R.T.: 0.006 min
 Response: 19650317
 Conc: 376.31 ng/ml



#5 AR-1016-3

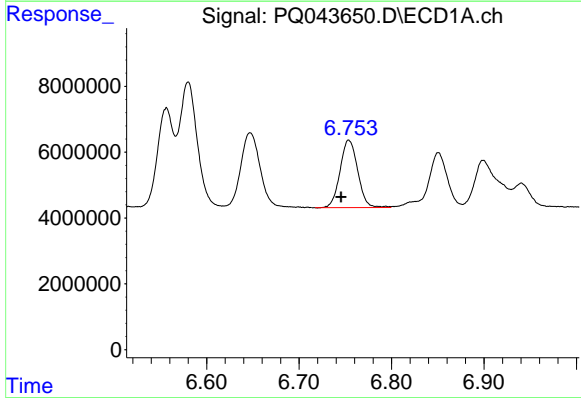
R.T.: 6.647 min
 Delta R.T.: 0.008 min
 Response: 30164008
 Conc: 350.33 ng/ml

Instrument :
 ECD_Q
 ClientSampleId :



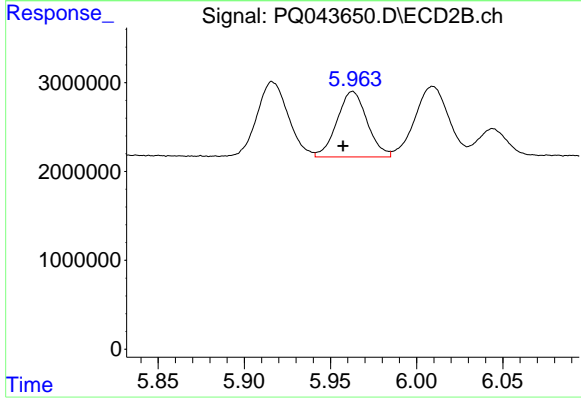
#5 AR-1016-3

R.T.: 5.916 min
 Delta R.T.: 0.005 min
 Response: 10721134
 Conc: 381.21 ng/ml



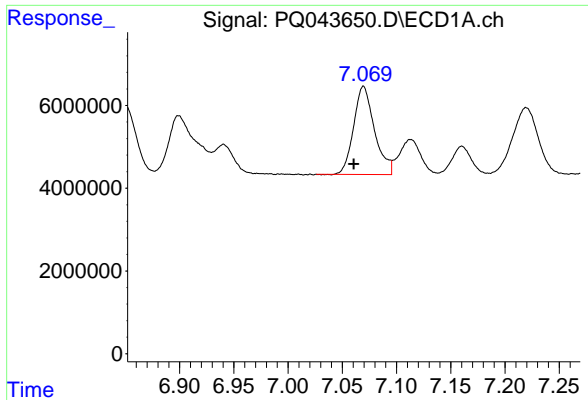
#6 AR-1016-4

R.T.: 6.754 min
 Delta R.T.: 0.008 min
 Response: 27279924
 Conc: 372.81 ng/ml



#6 AR-1016-4

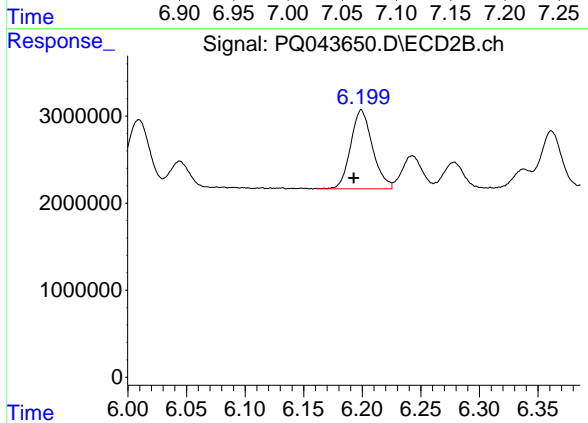
R.T.: 5.963 min
 Delta R.T.: 0.006 min
 Response: 8974828
 Conc: 382.49 ng/ml



#7 AR-1016-5

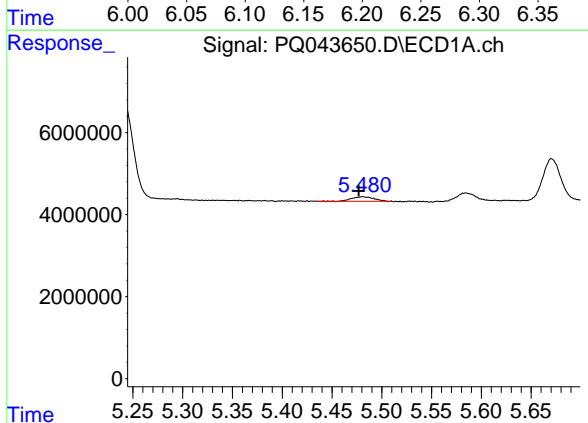
R.T.: 7.070 min
Delta R.T.: 0.009 min
Response: 28553186
Conc: 368.43 ng/ml

Instrument :
ECD_Q
ClientSampled :



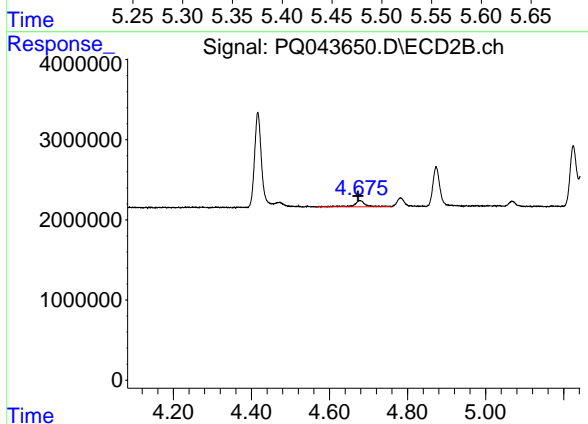
#7 AR-1016-5

R.T.: 6.199 min
Delta R.T.: 0.006 min
Response: 11770464
Conc: 367.81 ng/ml



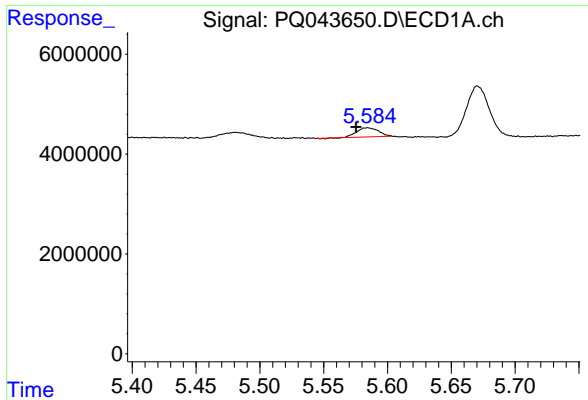
#8 AR-1221-1

R.T.: 5.481 min
Delta R.T.: 0.005 min
Response: 1735342
Conc: 75.82 ng/ml



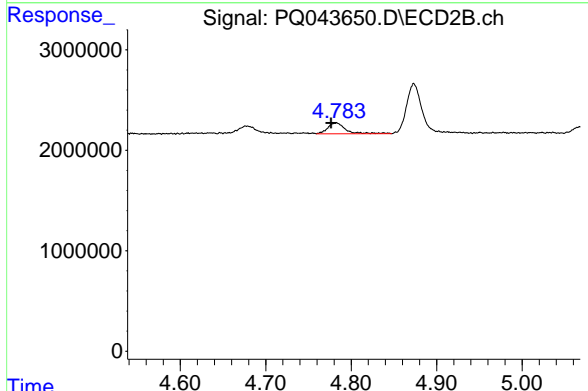
#8 AR-1221-1

R.T.: 4.678 min
Delta R.T.: 0.005 min
Response: 1614747
Conc: 147.86 ng/ml

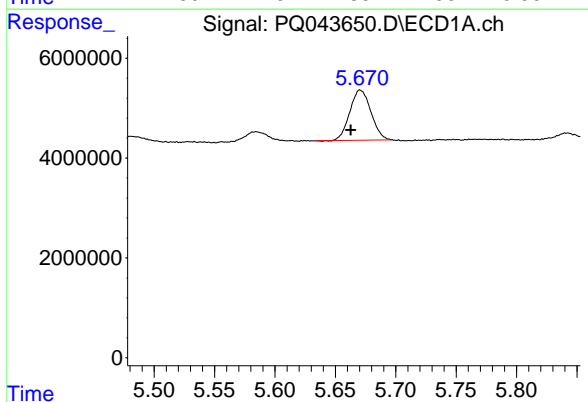


#9 AR-1221-2
 R.T.: 5.585 min
 Delta R.T.: 0.009 min
 Response: 2194786
 Conc: 126.89 ng/ml

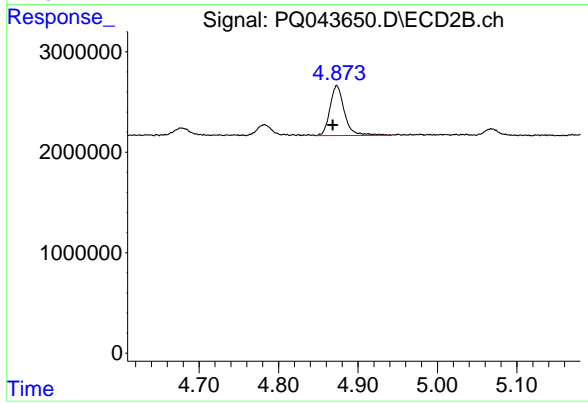
Instrument :
 ECD_Q
 ClientSampleId :



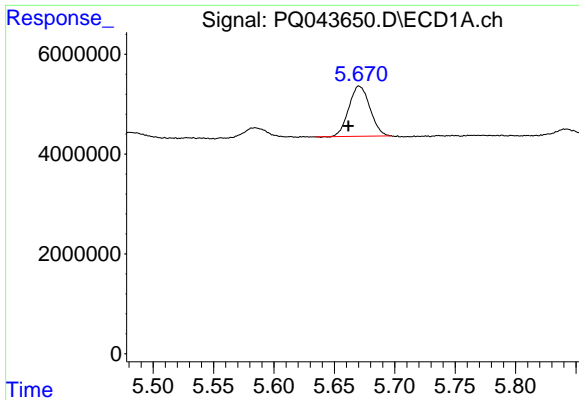
#9 AR-1221-2
 R.T.: 4.782 min
 Delta R.T.: 0.006 min
 Response: 1582142
 Conc: 198.97 ng/ml



#10 AR-1221-3
 R.T.: 5.671 min
 Delta R.T.: 0.008 min
 Response: 12250675
 Conc: 203.29 ng/ml



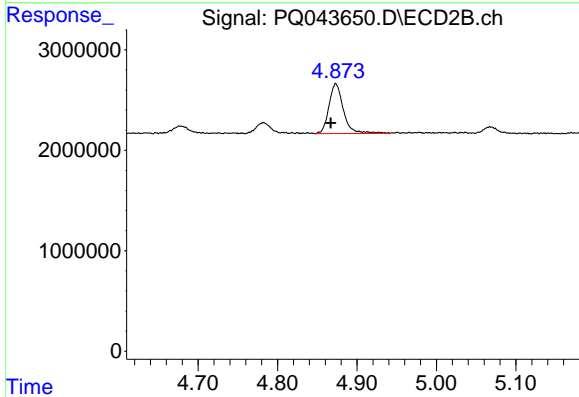
#10 AR-1221-3
 R.T.: 4.873 min
 Delta R.T.: 0.005 min
 Response: 6293554
 Conc: 229.85 ng/ml



#11 AR-1232-1

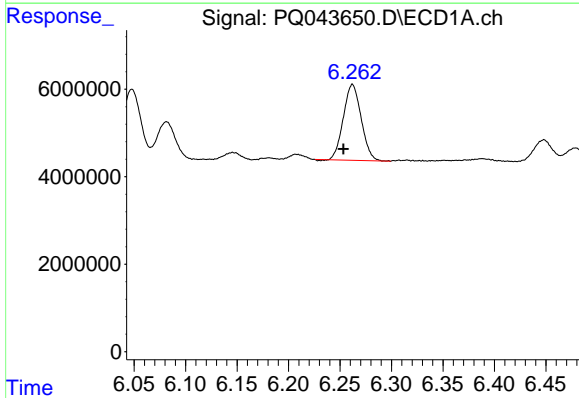
R.T.: 5.671 min
 Delta R.T.: 0.009 min
 Response: 12250675
 Conc: 240.51 ng/ml

Instrument :
 ECD_Q
 ClientSampleId :



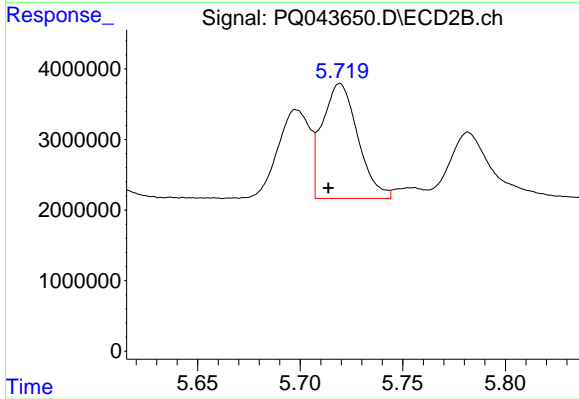
#11 AR-1232-1

R.T.: 4.873 min
 Delta R.T.: 0.006 min
 Response: 6293554
 Conc: 265.05 ng/ml



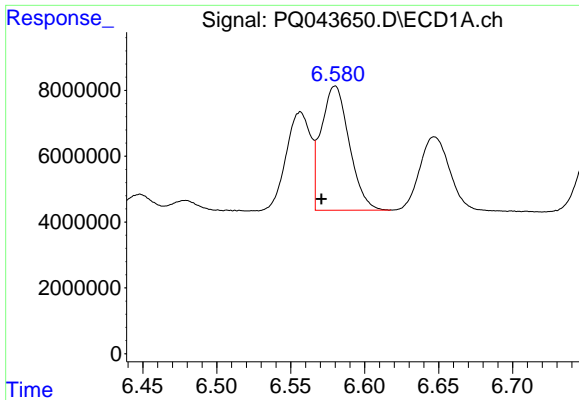
#12 AR-1232-2

R.T.: 6.262 min
 Delta R.T.: 0.009 min
 Response: 20885798
 Conc: 738.23 ng/ml



#12 AR-1232-2

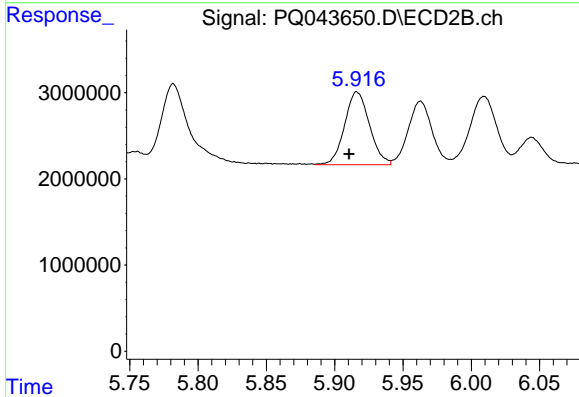
R.T.: 5.719 min
 Delta R.T.: 0.006 min
 Response: 19650317
 Conc: 805.00 ng/ml



#13 AR-1232-3

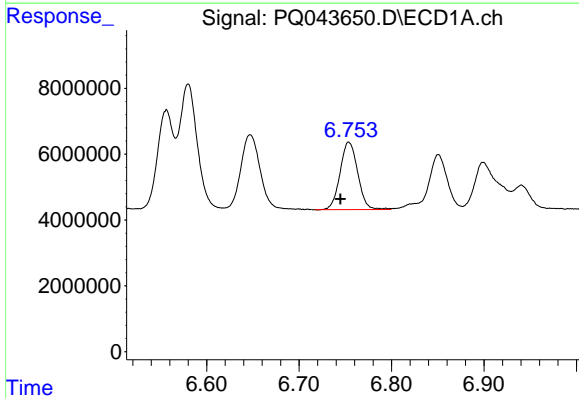
R.T.: 6.580 min
 Delta R.T.: 0.009 min
 Response: 50086723
 Conc: 793.22 ng/ml

Instrument :
 ECD_Q
 ClientSampled :



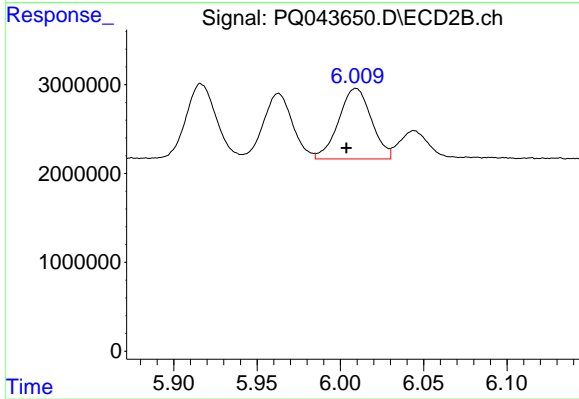
#13 AR-1232-3

R.T.: 5.916 min
 Delta R.T.: 0.006 min
 Response: 10721134
 Conc: 845.39 ng/ml



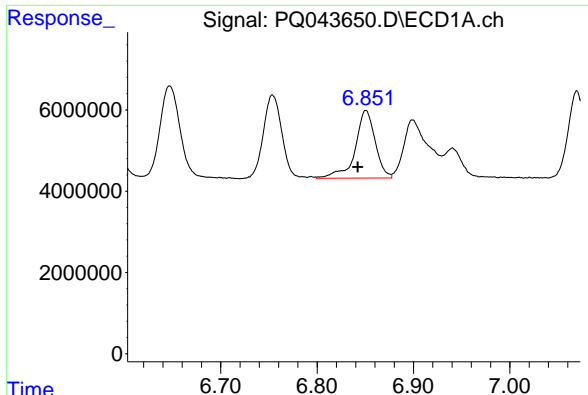
#14 AR-1232-4

R.T.: 6.754 min
 Delta R.T.: 0.009 min
 Response: 27279924
 Conc: 835.00 ng/ml



#14 AR-1232-4

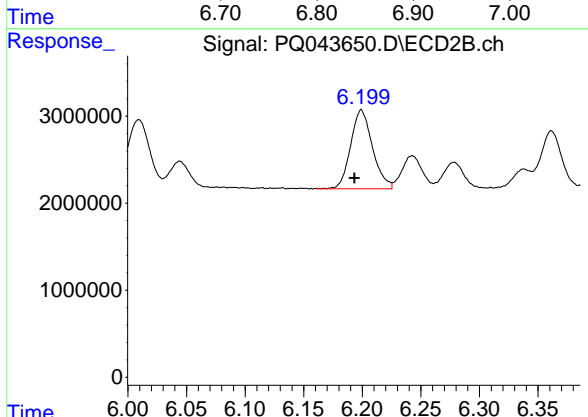
R.T.: 6.009 min
 Delta R.T.: 0.006 min
 Response: 10880173
 Conc: 973.49 ng/ml



#15 AR-1232-5

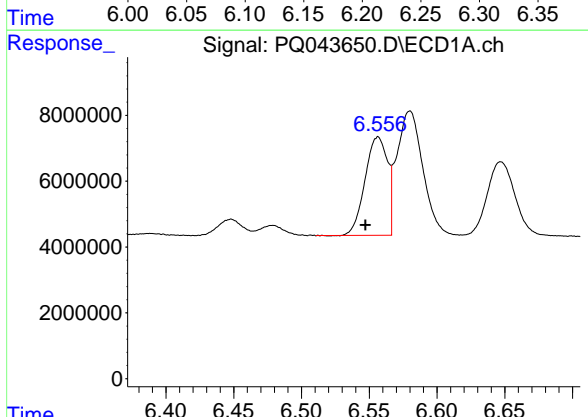
R.T.: 6.851 min
 Delta R.T.: 0.009 min
 Response: 24078827
 Conc: 965.66 ng/ml

Instrument :
 ECD_Q
 ClientSampleId :



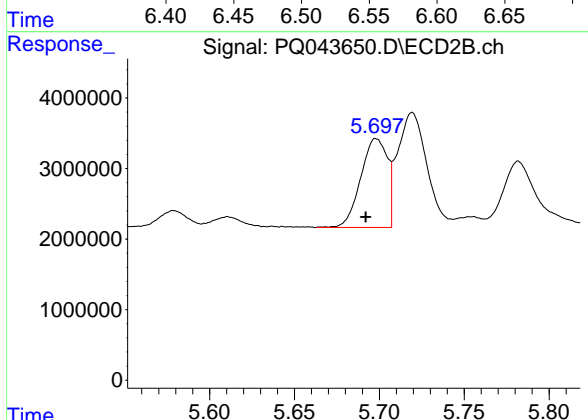
#15 AR-1232-5

R.T.: 6.199 min
 Delta R.T.: 0.006 min
 Response: 11770464
 Conc: 872.41 ng/ml



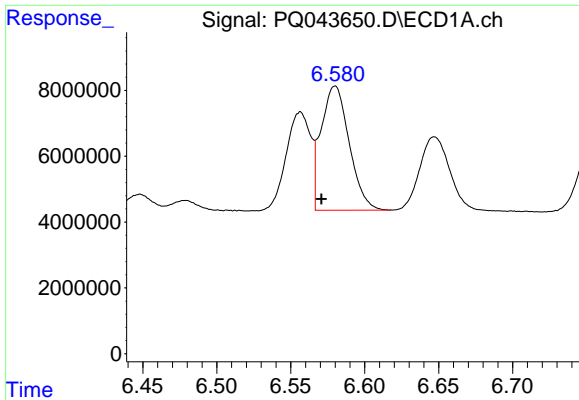
#16 AR-1242-1

R.T.: 6.556 min
 Delta R.T.: 0.009 min
 Response: 34498492
 Conc: 412.34 ng/ml



#16 AR-1242-1

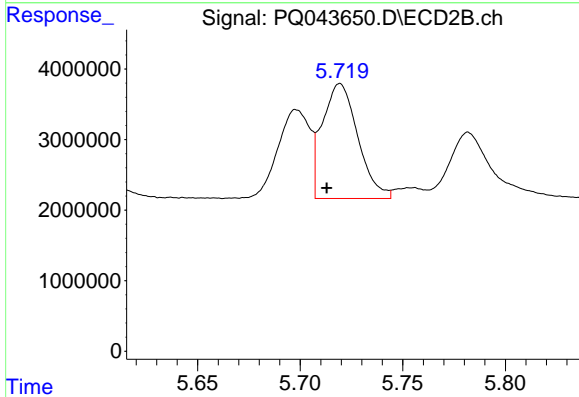
R.T.: 5.698 min
 Delta R.T.: 0.006 min
 Response: 13739672
 Conc: 419.38 ng/ml



#17 AR-1242-2

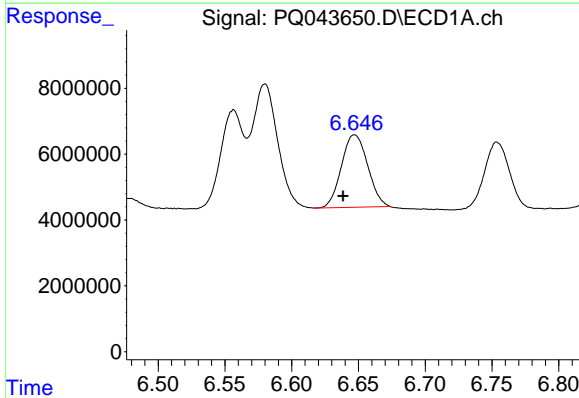
R.T.: 6.580 min
Delta R.T.: 0.009 min
Response: 50086723
Conc: 412.27 ng/ml

Instrument :
ECD_Q
ClientSampleId :



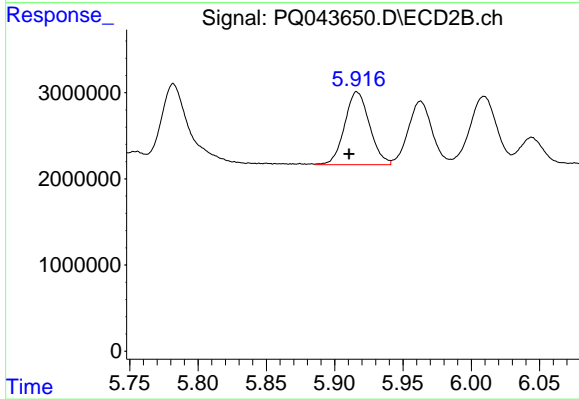
#17 AR-1242-2

R.T.: 5.719 min
Delta R.T.: 0.006 min
Response: 19650317
Conc: 431.68 ng/ml



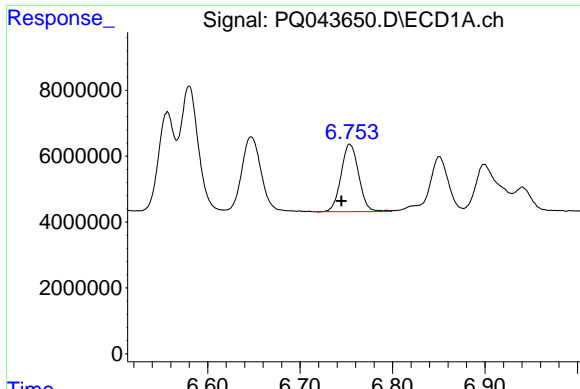
#18 AR-1242-3

R.T.: 6.647 min
Delta R.T.: 0.009 min
Response: 30164008
Conc: 410.33 ng/ml



#18 AR-1242-3

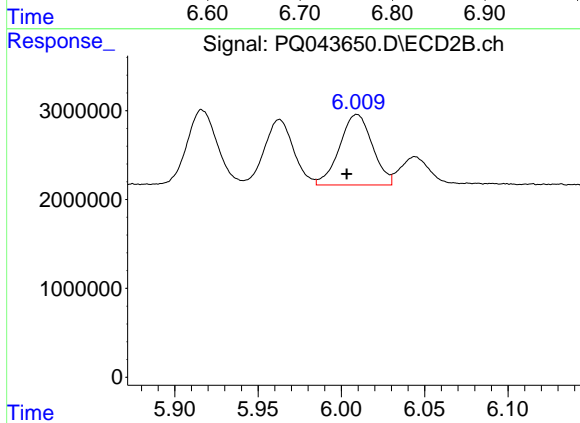
R.T.: 5.916 min
Delta R.T.: 0.006 min
Response: 10721134
Conc: 442.33 ng/ml



#19 AR-1242-4

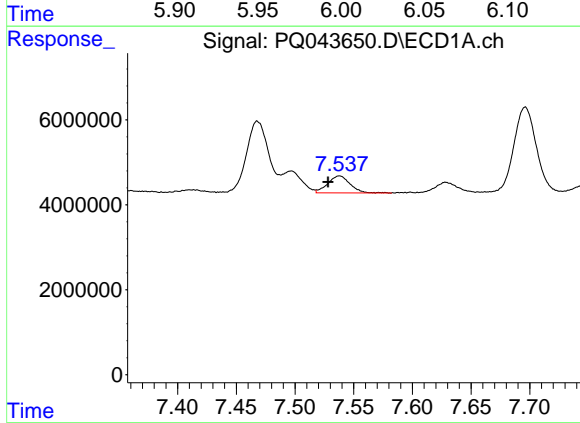
R.T.: 6.754 min
 Delta R.T.: 0.009 min
 Response: 27279924
 Conc: 433.13 ng/ml

Instrument :
 ECD_Q
 ClientSampled :



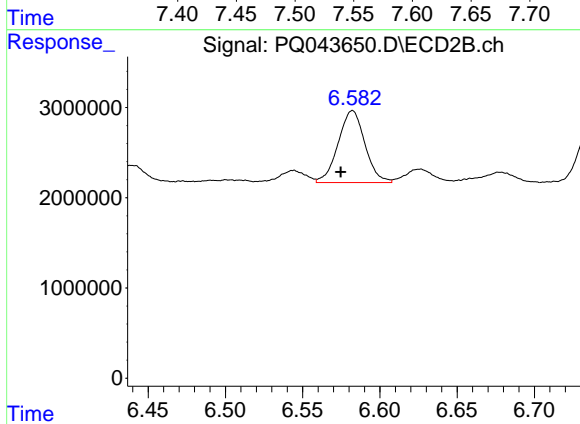
#19 AR-1242-4

R.T.: 6.009 min
 Delta R.T.: 0.006 min
 Response: 10880173
 Conc: 446.99 ng/ml



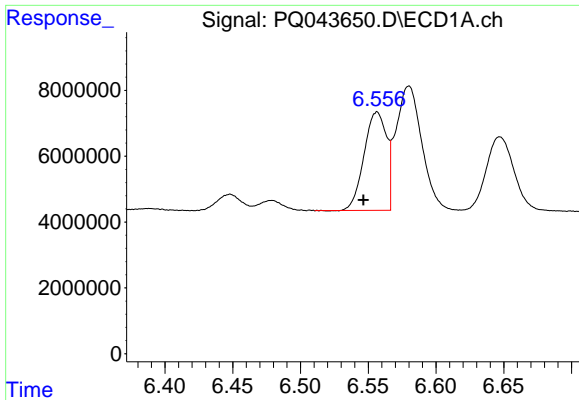
#20 AR-1242-5

R.T.: 7.538 min
 Delta R.T.: 0.010 min
 Response: 5253267
 Conc: 57.39 ng/ml



#20 AR-1242-5

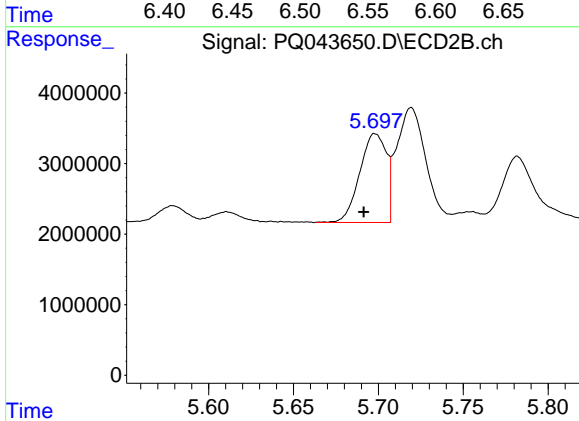
R.T.: 6.582 min
 Delta R.T.: 0.008 min
 Response: 9632480
 Conc: 274.56 ng/ml



#21 AR-1248-1

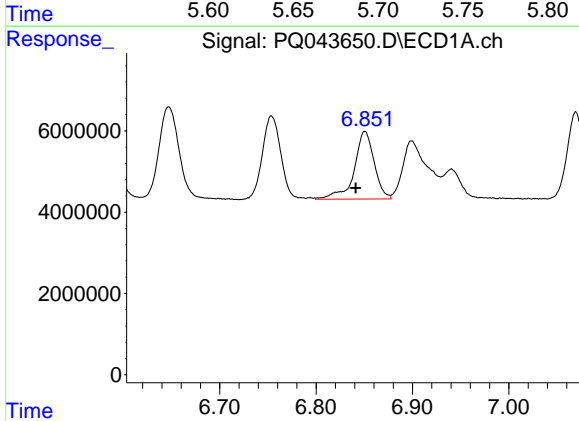
R.T.: 6.556 min
 Delta R.T.: 0.010 min
 Response: 34498492
 Conc: 489.49 ng/ml

Instrument :
 ECD_Q
 ClientSampled :



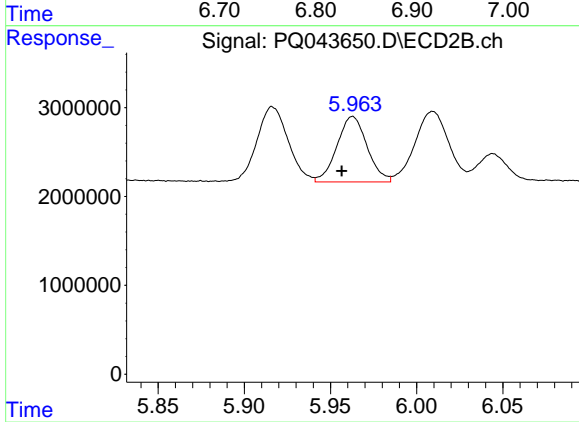
#21 AR-1248-1

R.T.: 5.698 min
 Delta R.T.: 0.007 min
 Response: 13739672
 Conc: 497.94 ng/ml



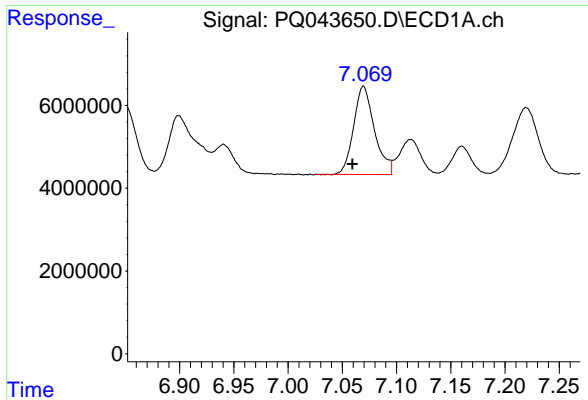
#22 AR-1248-2

R.T.: 6.851 min
 Delta R.T.: 0.010 min
 Response: 24078827
 Conc: 237.02 ng/ml



#22 AR-1248-2

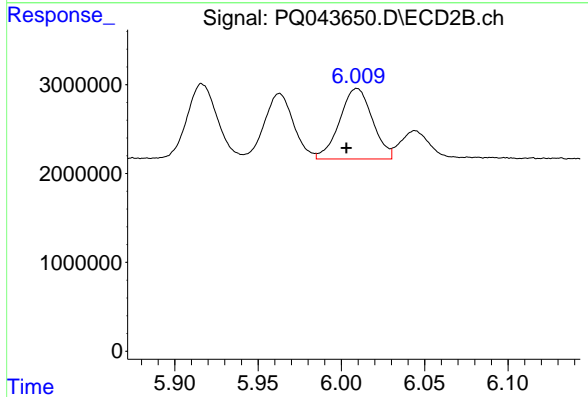
R.T.: 5.963 min
 Delta R.T.: 0.006 min
 Response: 8974828
 Conc: 238.42 ng/ml



#23 AR-1248-3

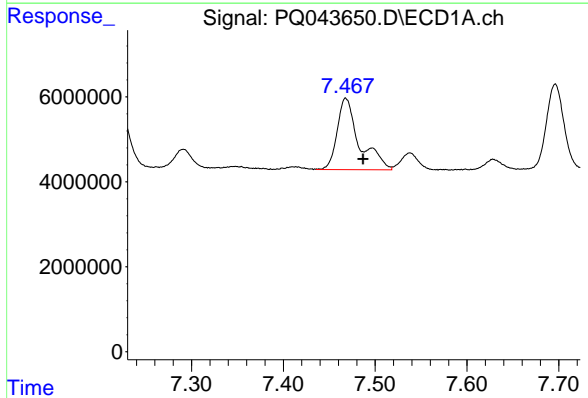
R.T.: 7.070 min
 Delta R.T.: 0.010 min
 Response: 28553186
 Conc: 237.05 ng/ml

Instrument :
 ECD_Q
 ClientSampled :



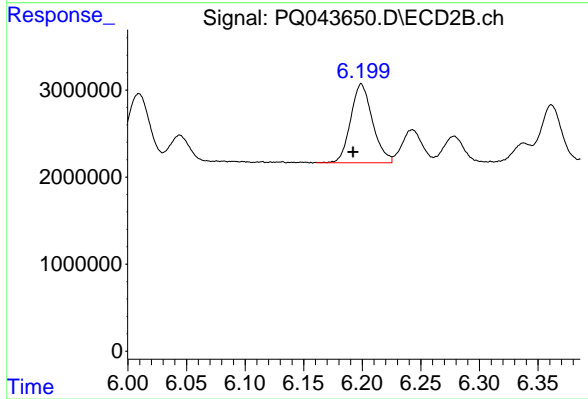
#23 AR-1248-3

R.T.: 6.009 min
 Delta R.T.: 0.006 min
 Response: 10880173
 Conc: 282.83 ng/ml



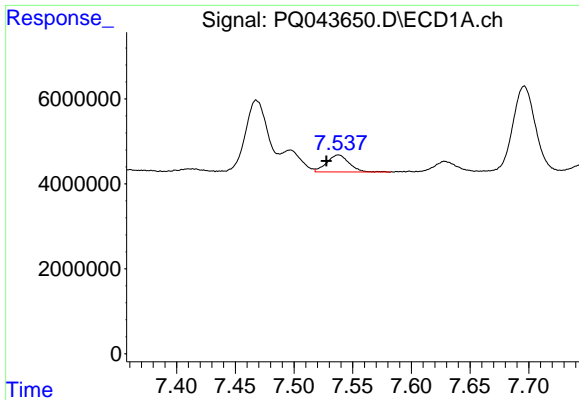
#24 AR-1248-4

R.T.: 7.468 min
 Delta R.T.: -0.019 min
 Response: 28052484
 Conc: 175.36 ng/ml



#24 AR-1248-4

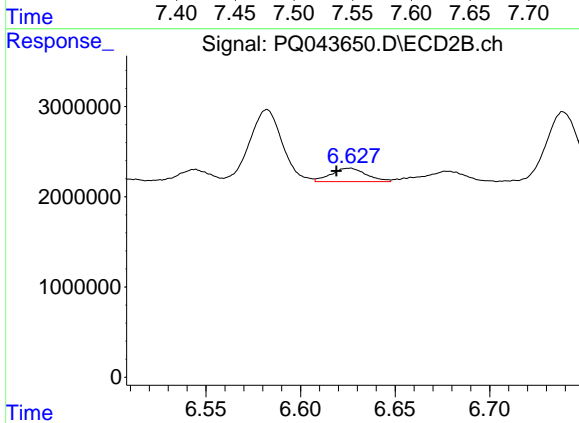
R.T.: 6.199 min
 Delta R.T.: 0.007 min
 Response: 11770464
 Conc: 250.08 ng/ml



#25 AR-1248-5

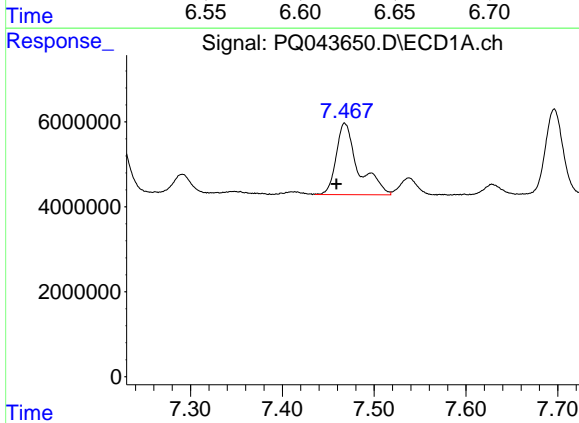
R.T.: 7.538 min
 Delta R.T.: 0.010 min
 Response: 5253267
 Conc: 33.65 ng/ml

Instrument :
 ECD_Q
 ClientSampled :



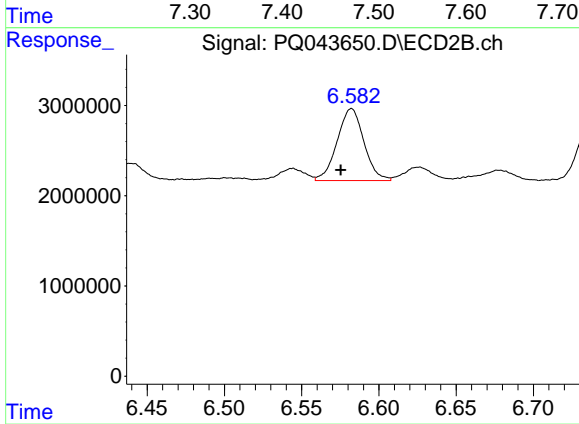
#25 AR-1248-5

R.T.: 6.626 min
 Delta R.T.: 0.007 min
 Response: 1913457
 Conc: 36.34 ng/ml



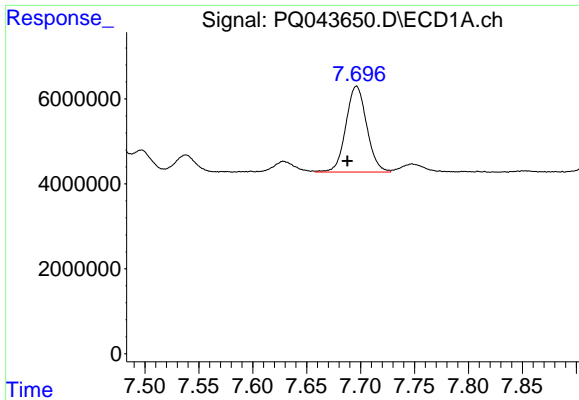
#26 AR-1254-1

R.T.: 7.468 min
 Delta R.T.: 0.009 min
 Response: 28052484
 Conc: 199.55 ng/ml



#26 AR-1254-1

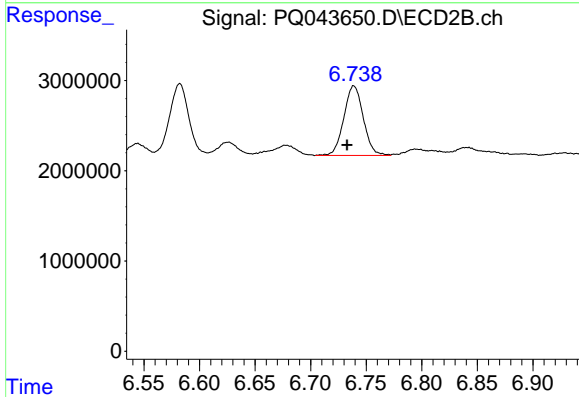
R.T.: 6.582 min
 Delta R.T.: 0.007 min
 Response: 9632480
 Conc: 132.71 ng/ml



#27 AR-1254-2

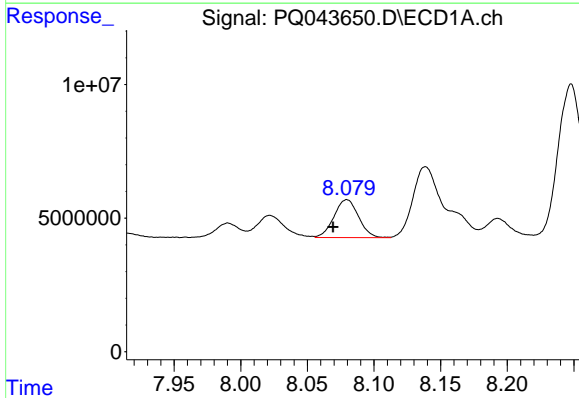
R.T.: 7.696 min
 Delta R.T.: 0.008 min
 Response: 27283164
 Conc: 115.02 ng/ml

Instrument :
 ECD_Q
 ClientSampleId :



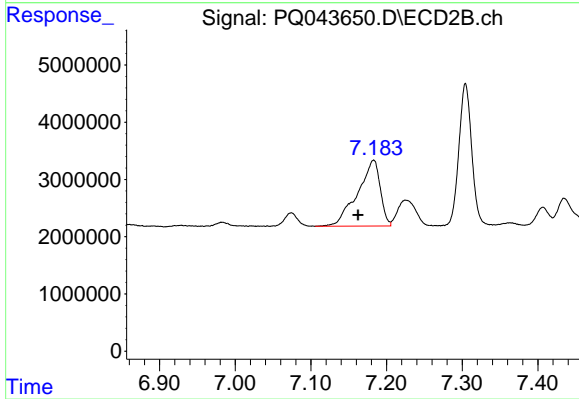
#27 AR-1254-2

R.T.: 6.739 min
 Delta R.T.: 0.006 min
 Response: 9404238
 Conc: 143.11 ng/ml



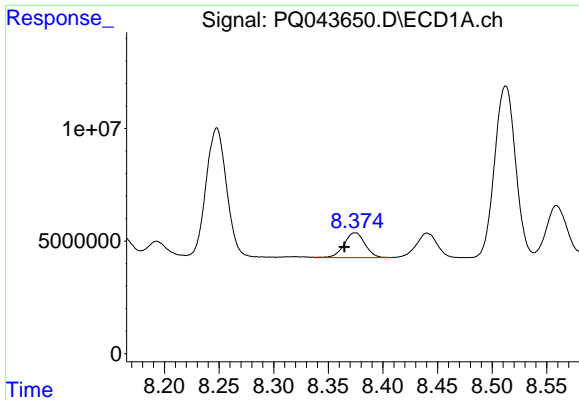
#28 AR-1254-3

R.T.: 8.080 min
 Delta R.T.: 0.010 min
 Response: 18244095
 Conc: 63.65 ng/ml



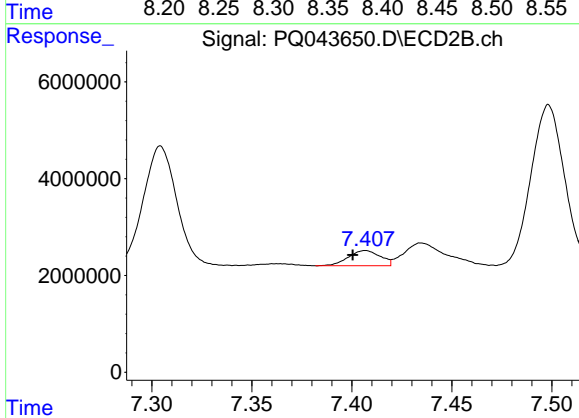
#28 AR-1254-3

R.T.: 7.183 min
 Delta R.T.: 0.020 min
 Response: 24043942
 Conc: 202.59 ng/ml

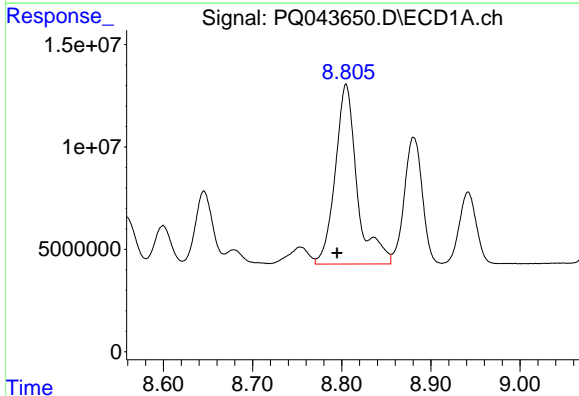


#29 AR-1254-4
 R.T.: 8.374 min
 Delta R.T.: 0.010 min
 Response: 14598593
 Conc: 60.71 ng/ml

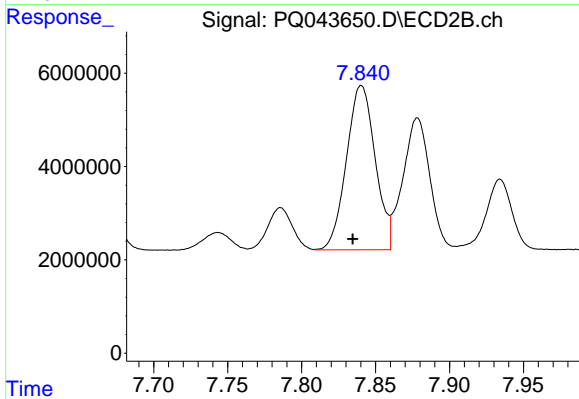
Instrument :
 ECD_Q
 ClientSampleId :



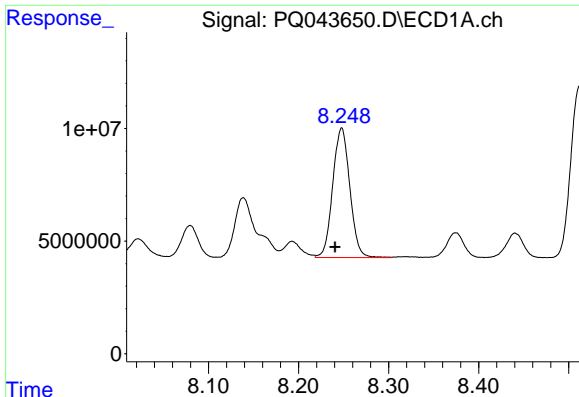
#29 AR-1254-4
 R.T.: 7.407 min
 Delta R.T.: 0.006 min
 Response: 3465155
 Conc: 40.41 ng/ml



#30 AR-1254-5
 R.T.: 8.805 min
 Delta R.T.: 0.010 min
 Response: 149919614
 Conc: 473.48 ng/ml



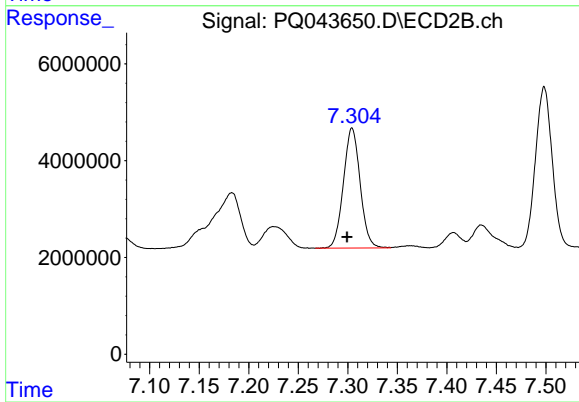
#30 AR-1254-5
 R.T.: 7.840 min
 Delta R.T.: 0.006 min
 Response: 47627276
 Conc: 387.09 ng/ml



#31 AR-1260-1

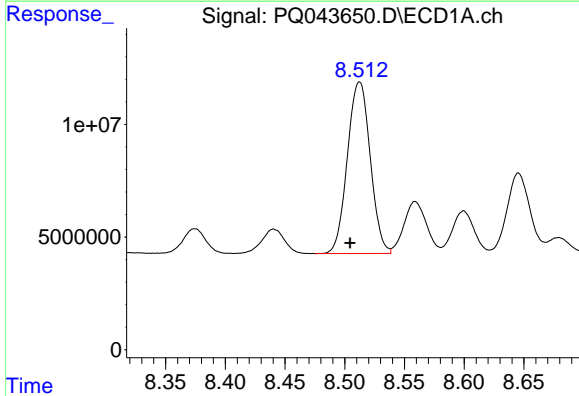
R.T.: 8.248 min
 Delta R.T.: 0.007 min
 Response: 75894125
 Conc: 398.81 ng/ml

Instrument :
 ECD_Q
 ClientSampleId :



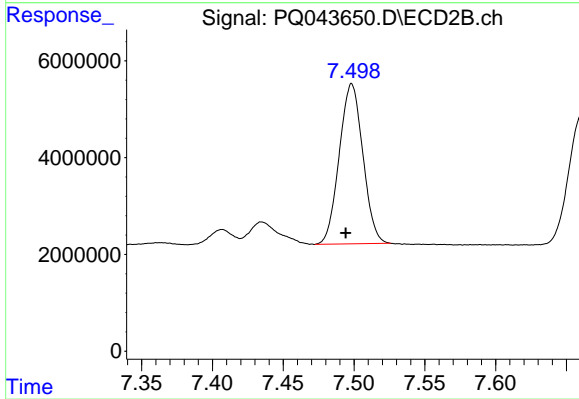
#31 AR-1260-1

R.T.: 7.304 min
 Delta R.T.: 0.005 min
 Response: 29159561
 Conc: 416.96 ng/ml



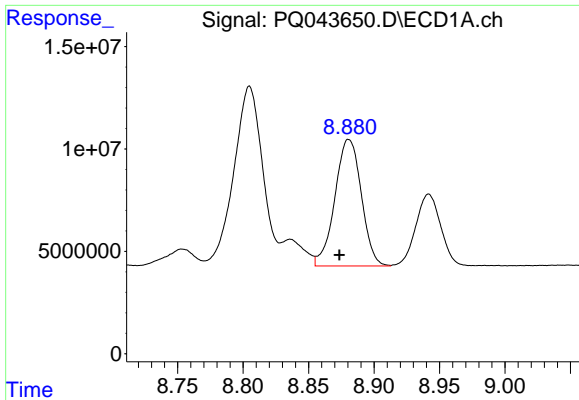
#32 AR-1260-2

R.T.: 8.512 min
 Delta R.T.: 0.008 min
 Response: 101615756
 Conc: 415.75 ng/ml



#32 AR-1260-2

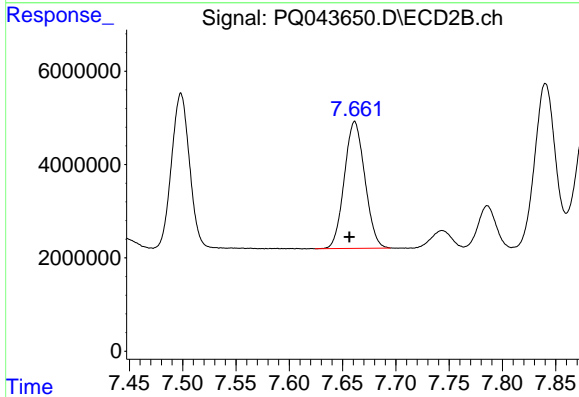
R.T.: 7.498 min
 Delta R.T.: 0.004 min
 Response: 38378661
 Conc: 425.83 ng/ml



#33 AR-1260-3

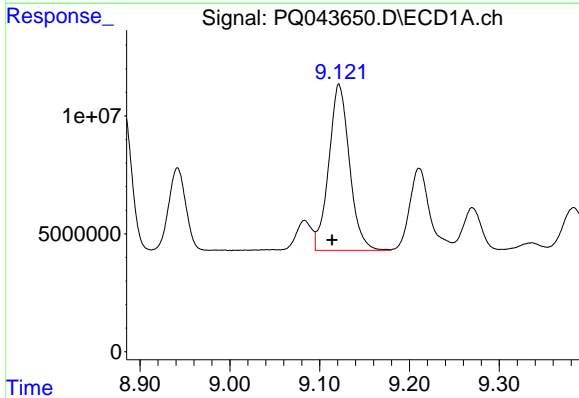
R.T.: 8.881 min
 Delta R.T.: 0.007 min
 Response: 86943006
 Conc: 436.06 ng/ml

Instrument :
 ECD_Q
 ClientSampled :



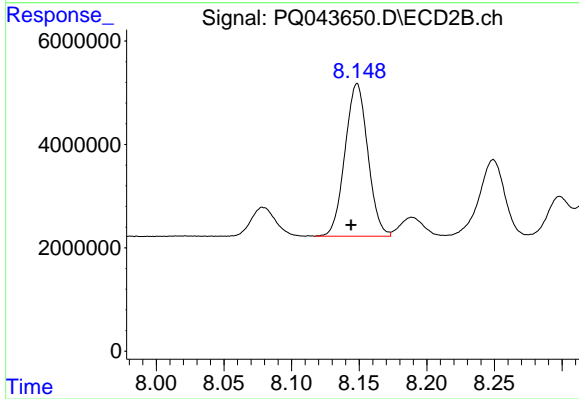
#33 AR-1260-3

R.T.: 7.661 min
 Delta R.T.: 0.005 min
 Response: 36422059
 Conc: 421.93 ng/ml



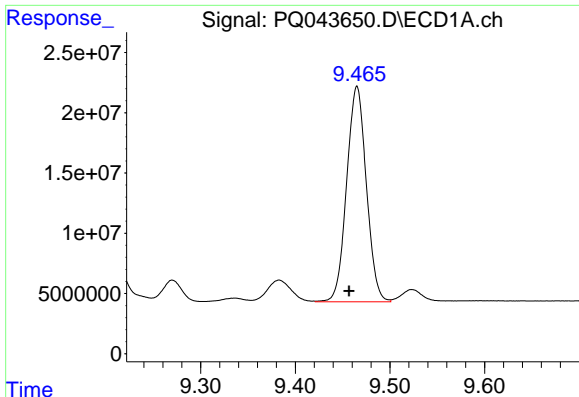
#34 AR-1260-4

R.T.: 9.122 min
 Delta R.T.: 0.008 min
 Response: 112881083
 Conc: 449.38 ng/ml



#34 AR-1260-4

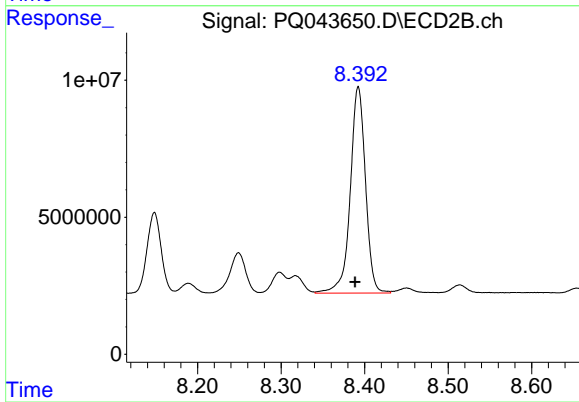
R.T.: 8.148 min
 Delta R.T.: 0.004 min
 Response: 34681358
 Conc: 445.36 ng/ml



#35 AR-1260-5

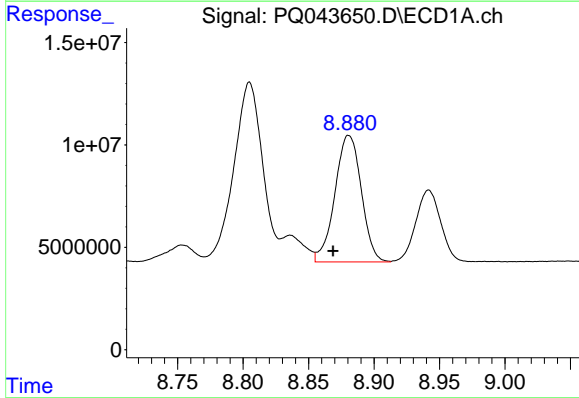
R.T.: 9.465 min
Delta R.T.: 0.008 min
Response: 258580961
Conc: 456.74 ng/ml

Instrument :
ECD_Q
ClientSampleId :



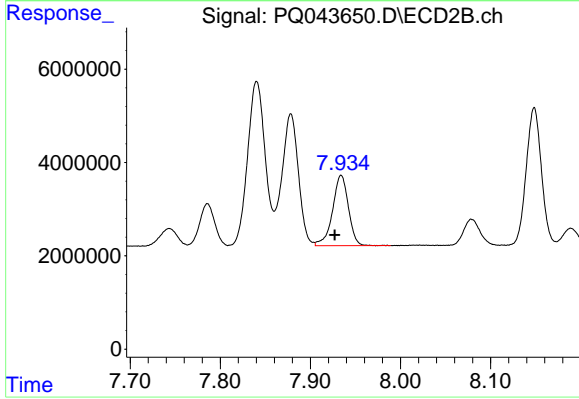
#35 AR-1260-5

R.T.: 8.393 min
Delta R.T.: 0.004 min
Response: 95344308
Conc: 451.69 ng/ml



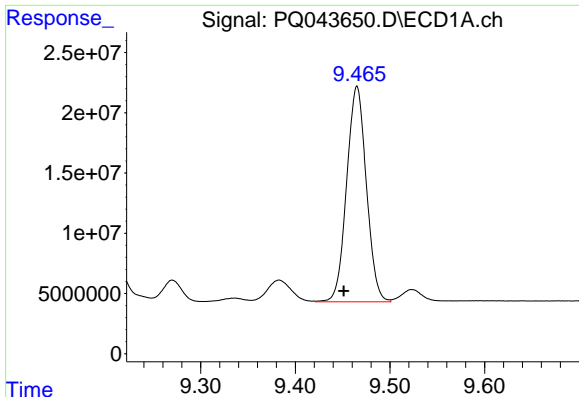
#36 AR-1262-1

R.T.: 8.881 min
Delta R.T.: 0.012 min
Response: 86943006
Conc: 266.39 ng/ml



#36 AR-1262-1

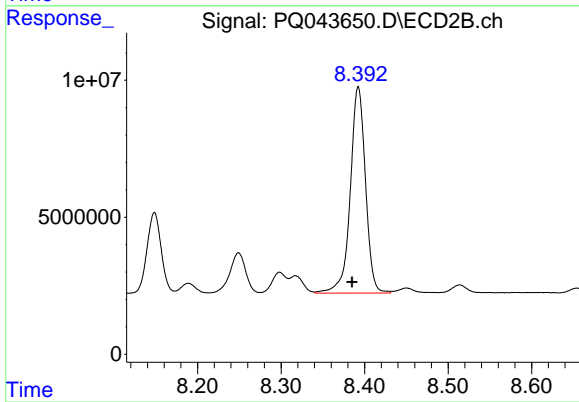
R.T.: 7.934 min
Delta R.T.: 0.007 min
Response: 18443413
Conc: 370.21 ng/ml



#37 AR-1262-2

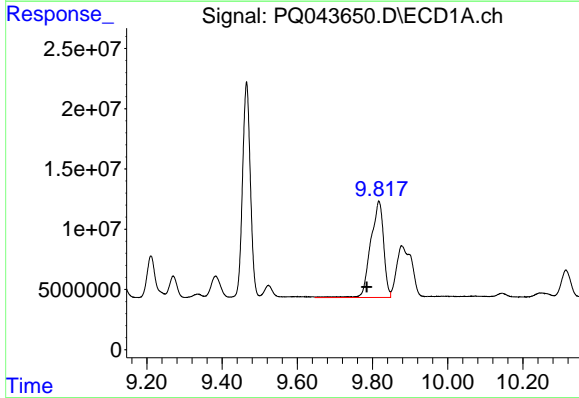
R.T.: 9.465 min
 Delta R.T.: 0.014 min
 Response: 258580961
 Conc: 354.04 ng/ml

Instrument :
 ECD_Q
 ClientSampleId :



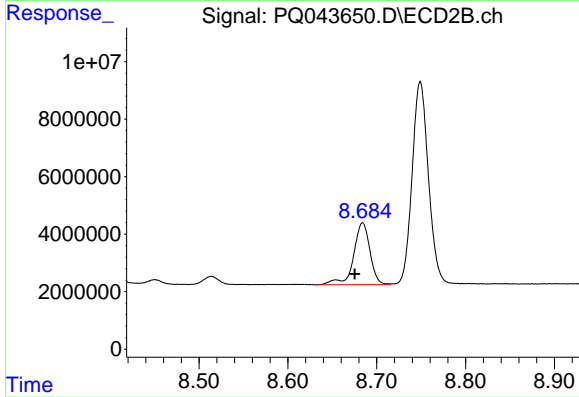
#37 AR-1262-2

R.T.: 8.393 min
 Delta R.T.: 0.007 min
 Response: 95344308
 Conc: 363.72 ng/ml



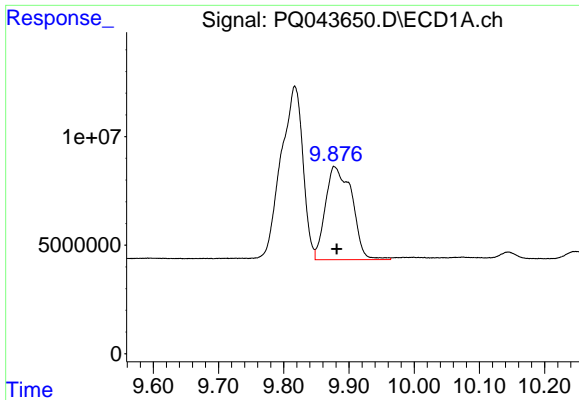
#38 AR-1262-3

R.T.: 9.817 min
 Delta R.T.: 0.032 min
 Response: 191773142
 Conc: 358.88 ng/ml



#38 AR-1262-3

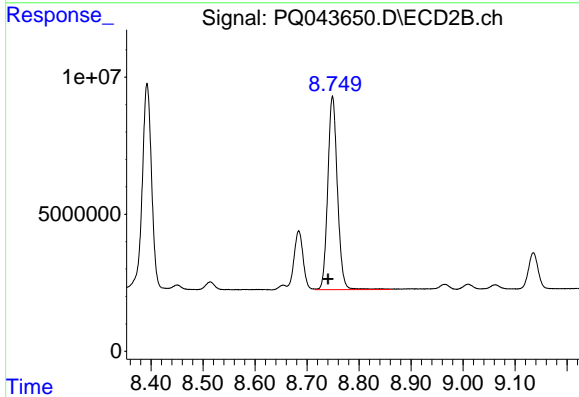
R.T.: 8.684 min
 Delta R.T.: 0.009 min
 Response: 27651240
 Conc: 223.71 ng/ml



#39 AR-1262-4

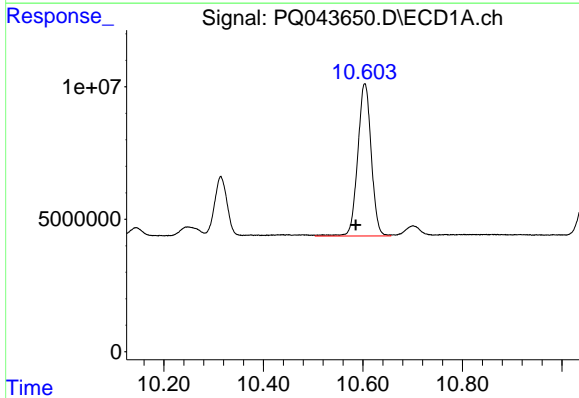
R.T.: 9.878 min
 Delta R.T.: -0.003 min
 Response: 121050125
 Conc: 296.20 ng/ml

Instrument :
 ECD_Q
 ClientSampled :



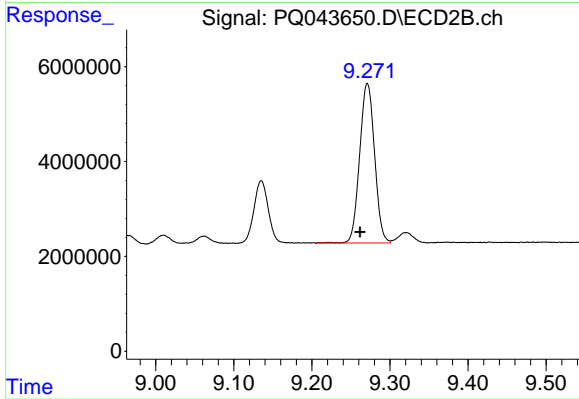
#39 AR-1262-4

R.T.: 8.749 min
 Delta R.T.: 0.008 min
 Response: 91318950
 Conc: 377.91 ng/ml



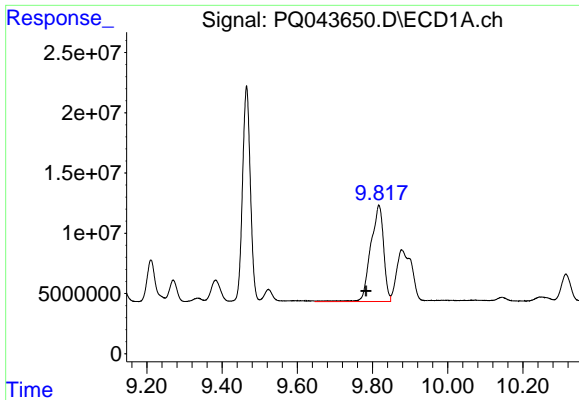
#40 AR-1262-5

R.T.: 10.604 min
 Delta R.T.: 0.018 min
 Response: 108398972
 Conc: 306.94 ng/ml



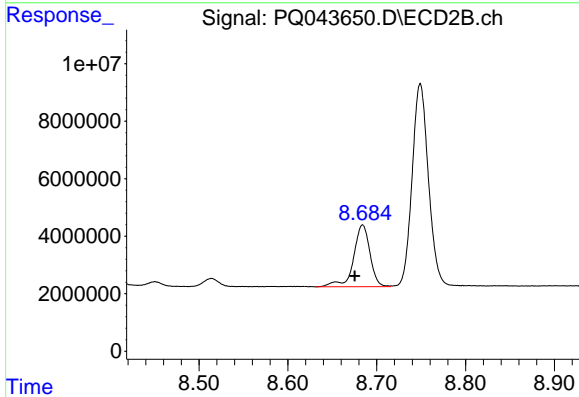
#40 AR-1262-5

R.T.: 9.271 min
 Delta R.T.: 0.009 min
 Response: 44658012
 Conc: 296.97 ng/ml

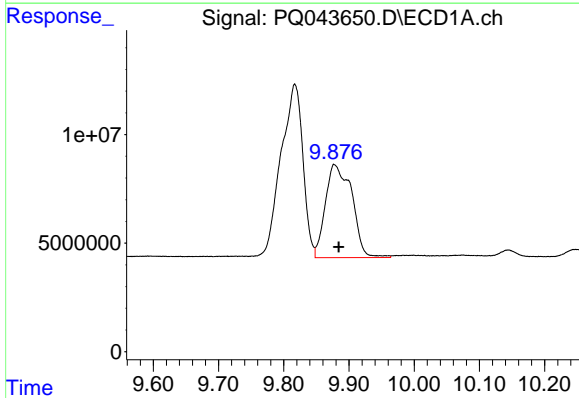


#41 AR-1268-1
 R.T.: 9.817 min
 Delta R.T.: 0.035 min
 Response: 191773142
 Conc: 222.69 ng/ml

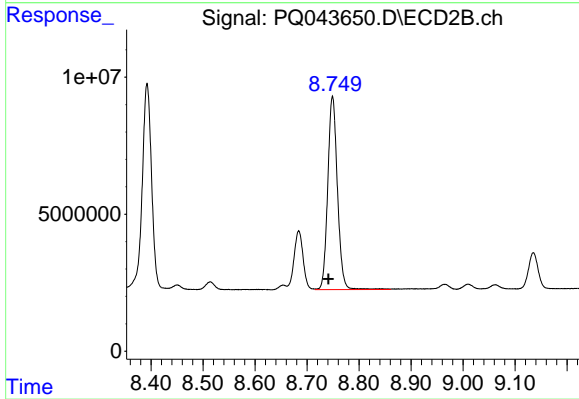
Instrument :
 ECD_Q
 ClientSampleId :



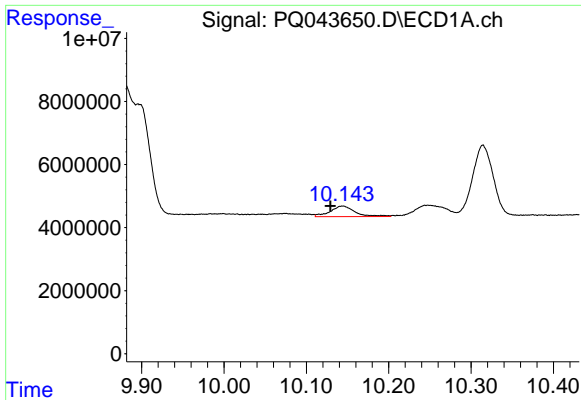
#41 AR-1268-1
 R.T.: 8.684 min
 Delta R.T.: 0.009 min
 Response: 27651240
 Conc: 83.05 ng/ml



#42 AR-1268-2
 R.T.: 9.878 min
 Delta R.T.: -0.006 min
 Response: 121050125
 Conc: 145.68 ng/ml



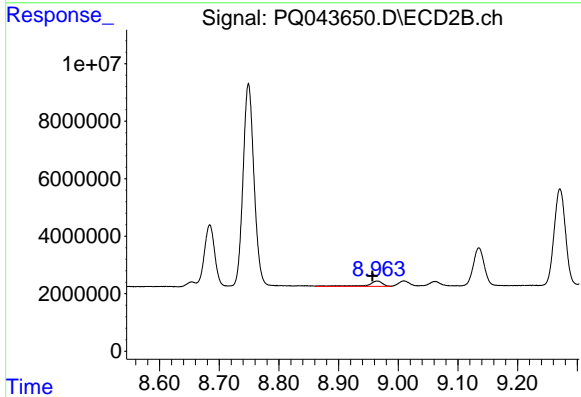
#42 AR-1268-2
 R.T.: 8.749 min
 Delta R.T.: 0.008 min
 Response: 91318950
 Conc: 282.80 ng/ml



#43 AR-1268-3

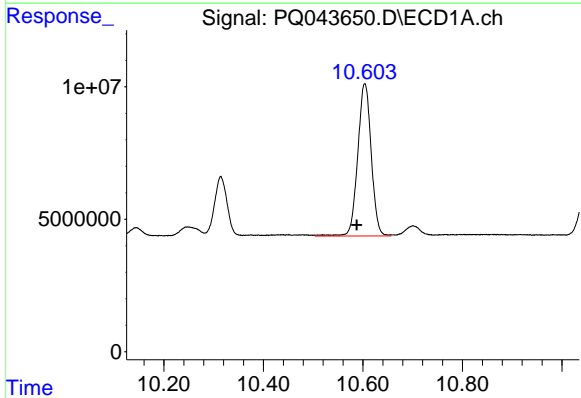
R.T.: 10.144 min
 Delta R.T.: 0.015 min
 Response: 7064970
 Conc: 10.04 ng/ml

Instrument :
 ECD_Q
 ClientSampled :



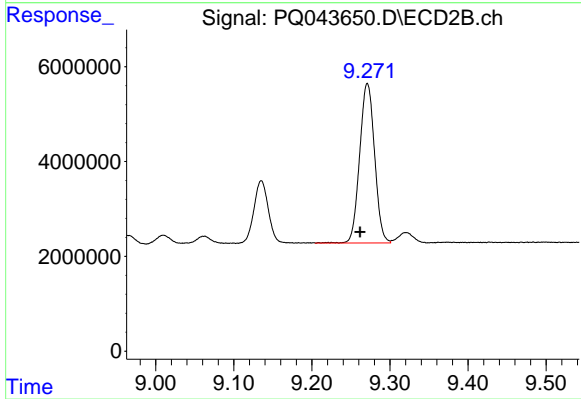
#43 AR-1268-3

R.T.: 8.965 min
 Delta R.T.: 0.008 min
 Response: 3290549
 Conc: 11.51 ng/ml



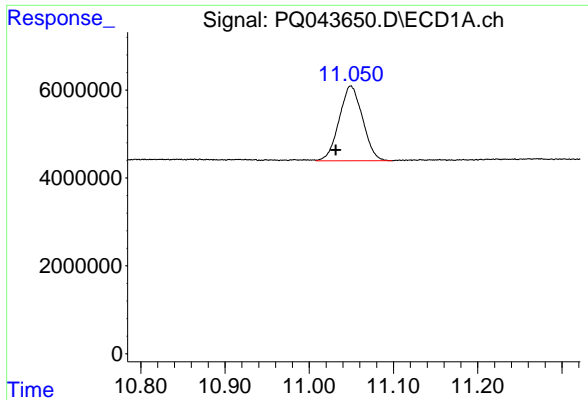
#44 AR-1268-4

R.T.: 10.604 min
 Delta R.T.: 0.016 min
 Response: 108398972
 Conc: 281.43 ng/ml



#44 AR-1268-4

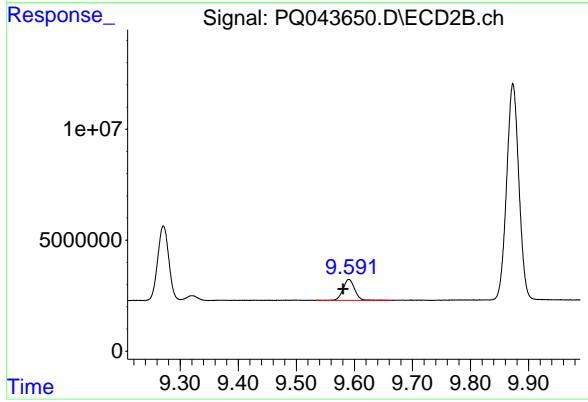
R.T.: 9.271 min
 Delta R.T.: 0.010 min
 Response: 44658012
 Conc: 277.09 ng/ml



#45 AR-1268-5

R.T.: 11.049 min
Delta R.T.: 0.018 min
Response: 32860409
Conc: 10.63 ng/ml

Instrument :
ECD_Q
ClientSampleId :



#45 AR-1268-5

R.T.: 9.591 min
Delta R.T.: 0.010 min
Response: 13194371
Conc: 10.75 ng/ml