

Data Path : Z:\pestpcbsrv\HPCHEM1\ECD_Q\Data\PQ092023\
 Data File : PQ063309.D
 Signal(s) : Signal #1: ECD1A.ch Signal #2: ECD2B.ch
 Acq On : 20 Sep 2023 10:57
 Operator : YP\AJ
 Sample : AR1660CCC500
 Misc :
 ALS Vial : 3 Sample Multiplier: 1

Instrument :
 ECD_Q
ClientSampleId :
 AR1660CCC500

Integration File signal 1: autoint1.e
 Integration File signal 2: autoint2.e
 Quant Time: Sep 20 11:38:31 2023
 Quant Method : Z:\pestpcbsrv\HPCHEM1\ECD_Q\Method\PQ091923.M
 Quant Title : GC EXTRACTABLES
 QLast Update : Wed Sep 20 05:26:41 2023
 Response via : Initial Calibration
 Integrator: ChemStation

Volume Inj. : 2 µl
 Signal #1 Phase : ZB-MR1 Signal #2 Phase: ZB-MR2
 Signal #1 Info : 30Mx0.32mmx 0.50µ Signal #2 Info : 30M x 0.32mm x 0.25µm

Compound	RT#1	RT#2	Resp#1	Resp#2	ng/ml	ng/ml

System Monitoring Compounds						
1) SA Tetrachlo...	3.463	2.781	256.8E6	165.3E6	54.834	47.831
2) SA Decachlor...	8.699	7.583	196.5E6	172.8E6	56.217	48.071
Target Compounds						
3) L1 AR-1016-1	4.579	3.793	78930796	58781194	542.869	471.901
4) L1 AR-1016-2	4.598	3.809	126.2E6	86240998	540.135	485.157
5) L1 AR-1016-3	4.656	3.970	77052041	46050469	536.214	477.247
6) L1 AR-1016-4	4.749	4.019	62240677	38636609	545.648	476.627
7) L1 AR-1016-5	5.039	4.215	63049007	48221425	536.549	479.031
31) L7 AR-1260-1	6.149	5.216	132.2E6	96286795	549.755	476.849
32) L7 AR-1260-2	6.410	5.406	151.0E6	116.6E6	532.866	476.484
33) L7 AR-1260-3	6.766	5.548	110.8E6	109.7E6	545.019	463.999
34) L7 AR-1260-4	6.984	6.012	124.8E6	91898556	523.602	481.338
35) L7 AR-1260-5	7.298	6.259	242.2E6	206.4E6	541.090	471.370

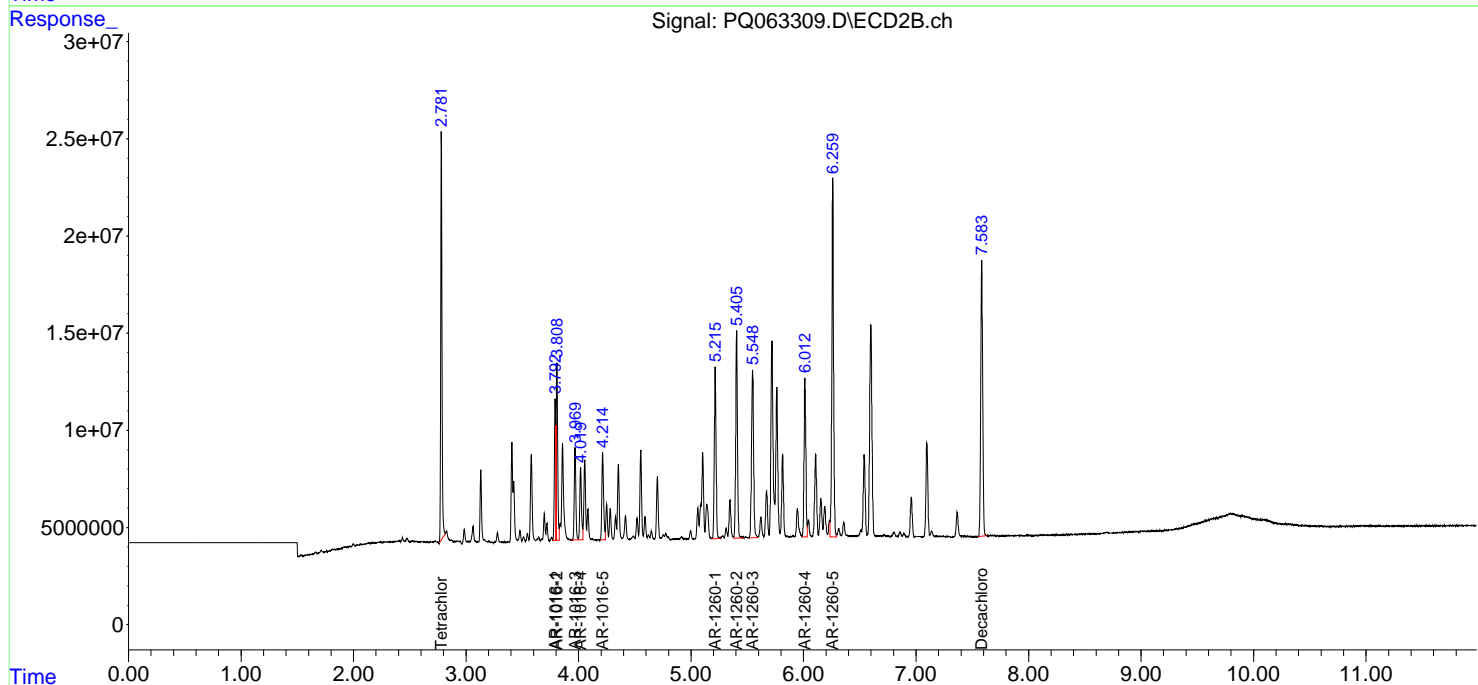
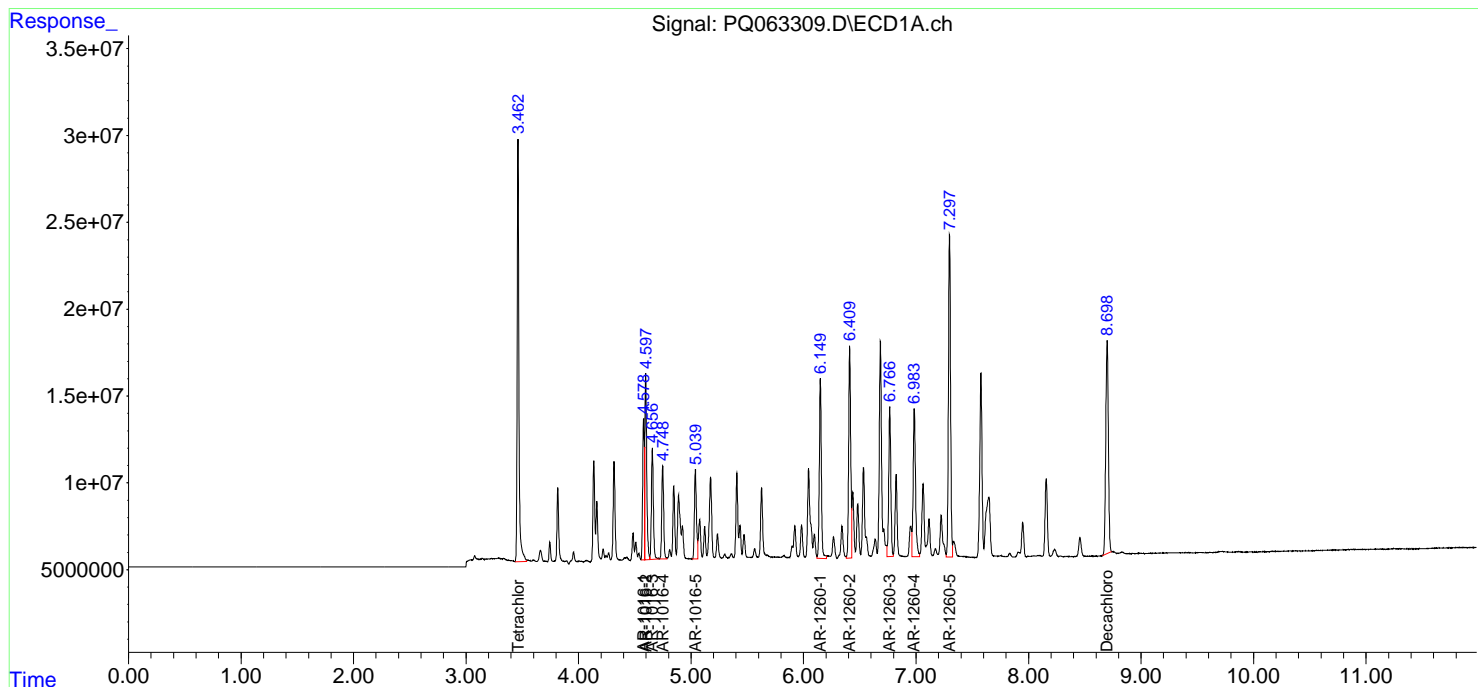
(f)=RT Delta > 1/2 Window (#)=Amounts differ by > 25% (m)=manual int.

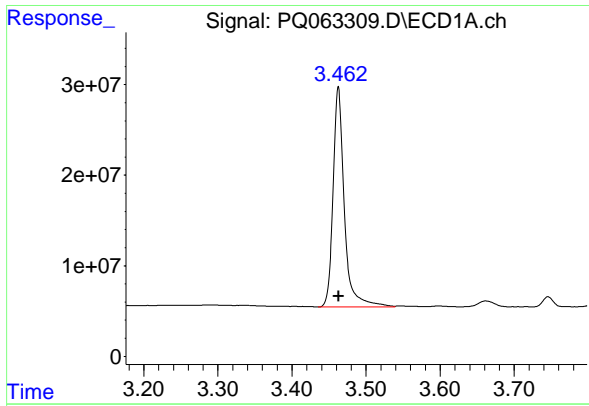
Data Path : Z:\pestpcbsrv\HPCHEM1\ECD_Q\Data\PQ092023\
 Data File : PQ063309.D
 Signal(s) : Signal #1: ECD1A.ch Signal #2: ECD2B.ch
 Acq On : 20 Sep 2023 10:57
 Operator : YP\AJ
 Sample : AR1660CCC500
 Misc :
 ALS Vial : 3 Sample Multiplier: 1

Instrument :
 ECD_Q
 ClientSampleId :
 AR1660CCC500

Integration File signal 1: autoint1.e
 Integration File signal 2: autoint2.e
 Quant Time: Sep 20 11:38:31 2023
 Quant Method : Z:\pestpcbsrv\HPCHEM1\ECD_Q\Method\PQ091923.M
 Quant Title : GC EXTRACTABLES
 QLast Update : Wed Sep 20 05:26:41 2023
 Response via : Initial Calibration
 Integrator: ChemStation

Volume Inj. : 2 µl
 Signal #1 Phase : ZB-MR1 Signal #2 Phase: ZB-MR2
 Signal #1 Info : 30Mx0.32mmx 0.50µ Signal #2 Info : 30M x 0.32mm x 0.25µm

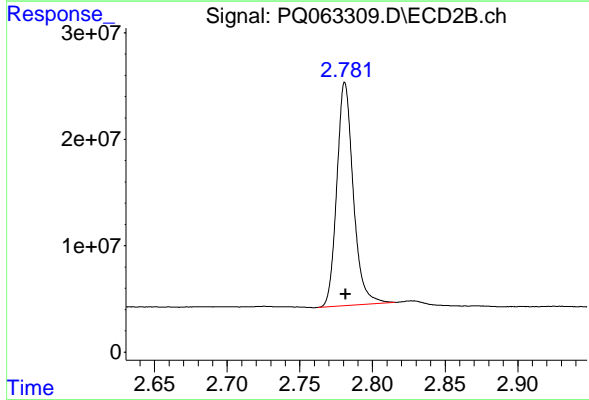




#1 Tetrachloro-m-xylene

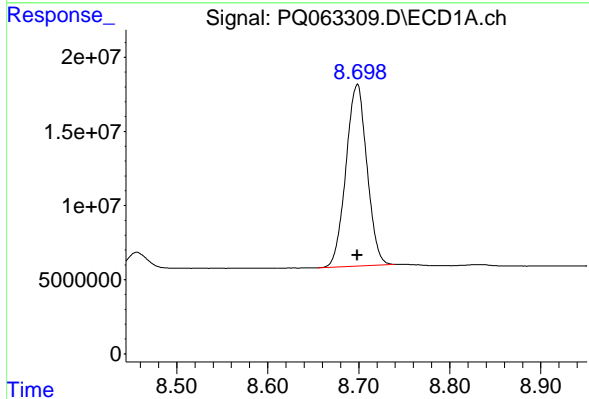
R.T.: 3.463 min
 Delta R.T.: 0.000 min
 Response: 256816871
 Conc: 54.83 ng/ml

Instrument :
 ECD_Q
 ClientSampleId :
 AR1660CCC500



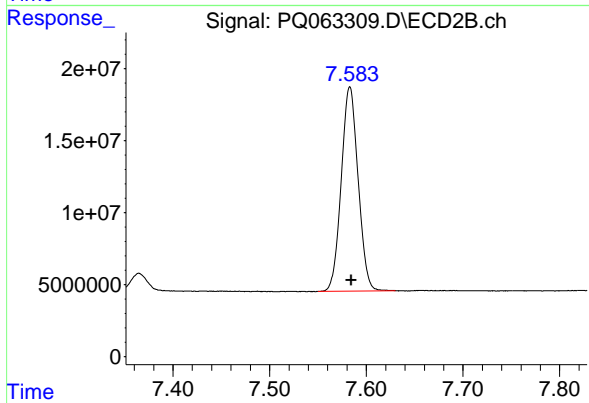
#1 Tetrachloro-m-xylene

R.T.: 2.781 min
 Delta R.T.: 0.000 min
 Response: 165303258
 Conc: 47.83 ng/ml



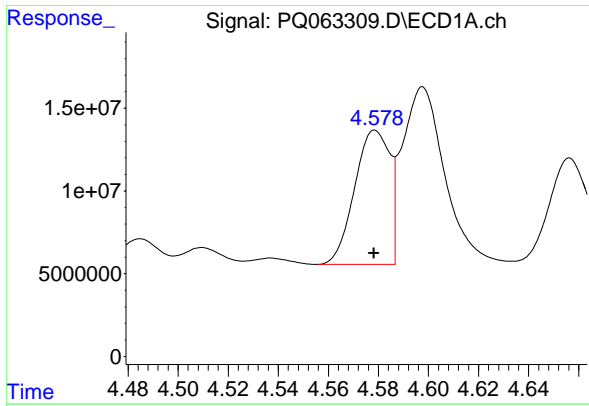
#2 Decachlorobiphenyl

R.T.: 8.699 min
 Delta R.T.: 0.000 min
 Response: 196452314
 Conc: 56.22 ng/ml



#2 Decachlorobiphenyl

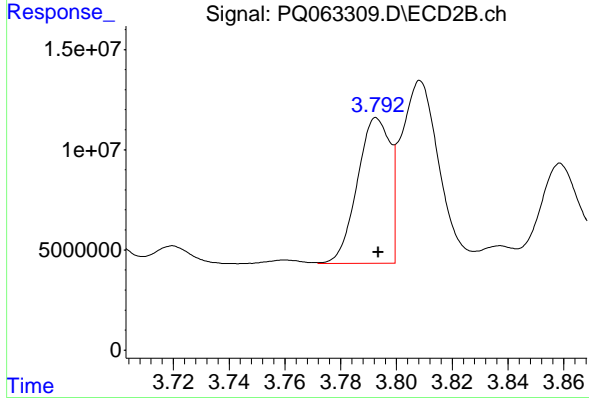
R.T.: 7.583 min
 Delta R.T.: -0.002 min
 Response: 172803146
 Conc: 48.07 ng/ml



#3 AR-1016-1

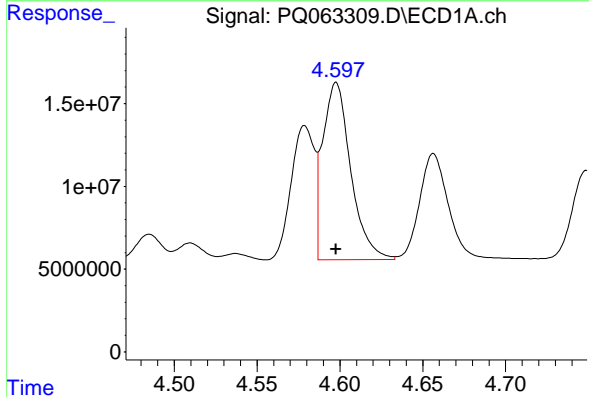
R.T.: 4.579 min
 Delta R.T.: 0.000 min
 Response: 78930796
 Conc: 542.87 ng/ml

Instrument :
 ECD_Q
 ClientSampleId :
 AR1660CCC500



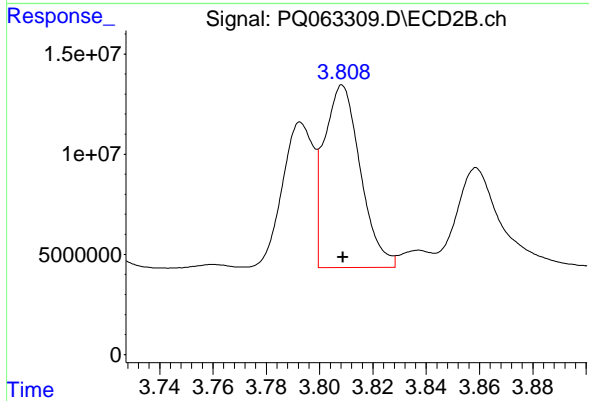
#3 AR-1016-1

R.T.: 3.793 min
 Delta R.T.: 0.000 min
 Response: 58781194
 Conc: 471.90 ng/ml



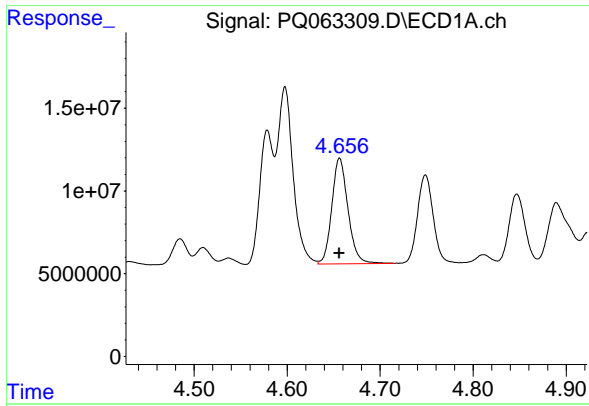
#4 AR-1016-2

R.T.: 4.598 min
 Delta R.T.: 0.000 min
 Response: 126197371
 Conc: 540.14 ng/ml



#4 AR-1016-2

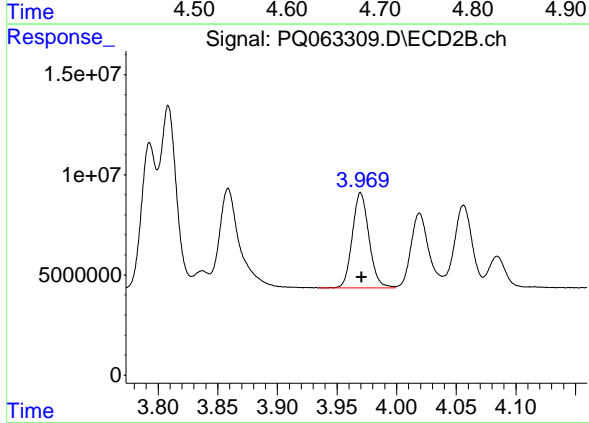
R.T.: 3.809 min
 Delta R.T.: 0.000 min
 Response: 86240998
 Conc: 485.16 ng/ml



#5 AR-1016-3

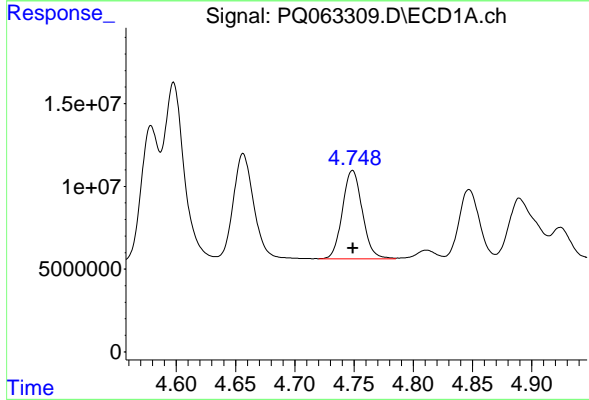
R.T.: 4.656 min
 Delta R.T.: 0.000 min
 Response: 77052041
 Conc: 536.21 ng/ml

Instrument :
 ECD_Q
 ClientSampleId :
 AR1660CCC500



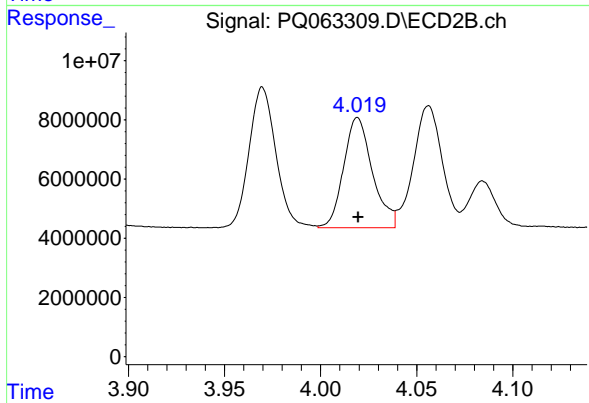
#5 AR-1016-3

R.T.: 3.970 min
 Delta R.T.: 0.000 min
 Response: 46050469
 Conc: 477.25 ng/ml



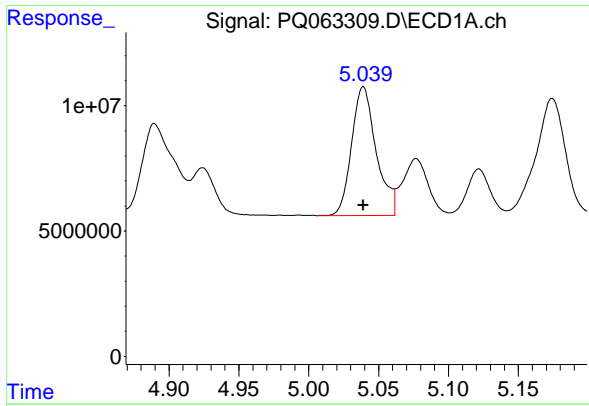
#6 AR-1016-4

R.T.: 4.749 min
 Delta R.T.: 0.000 min
 Response: 62240677
 Conc: 545.65 ng/ml



#6 AR-1016-4

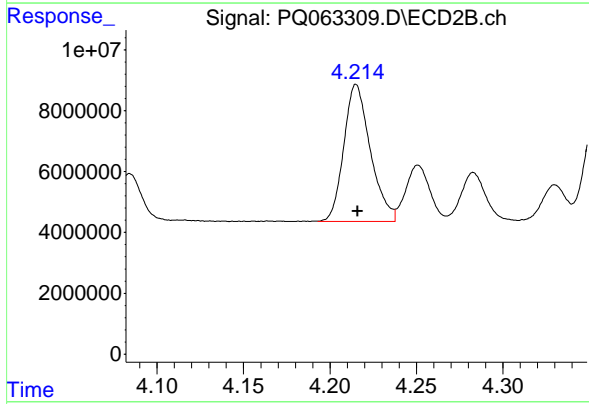
R.T.: 4.019 min
 Delta R.T.: 0.000 min
 Response: 38636609
 Conc: 476.63 ng/ml



#7 AR-1016-5

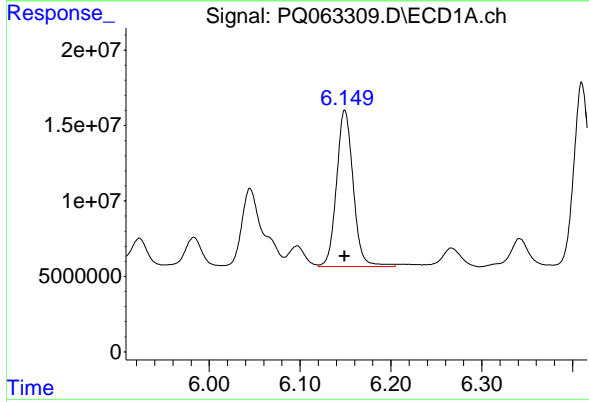
R.T.: 5.039 min
 Delta R.T.: 0.000 min
 Response: 63049007
 Conc: 536.55 ng/ml

Instrument :
 ECD_Q
 ClientSampleId :
 AR1660CCC500



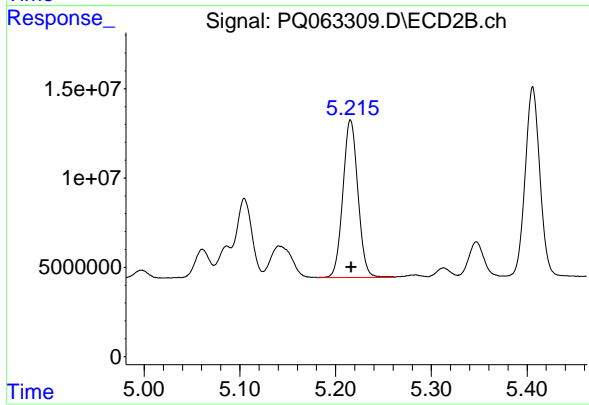
#7 AR-1016-5

R.T.: 4.215 min
 Delta R.T.: 0.000 min
 Response: 48221425
 Conc: 479.03 ng/ml



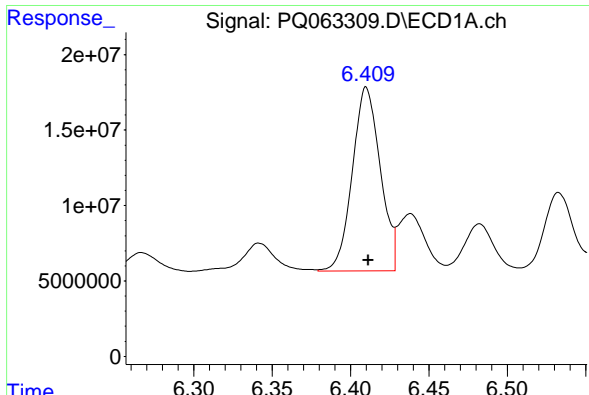
#31 AR-1260-1

R.T.: 6.149 min
 Delta R.T.: 0.000 min
 Response: 132237952
 Conc: 549.75 ng/ml



#31 AR-1260-1

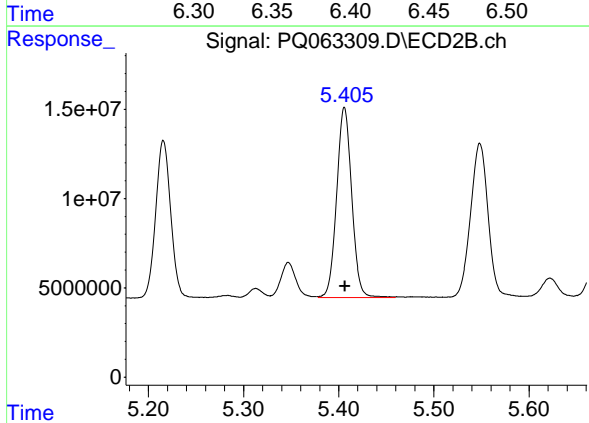
R.T.: 5.216 min
 Delta R.T.: 0.000 min
 Response: 96286795
 Conc: 476.85 ng/ml



#32 AR-1260-2

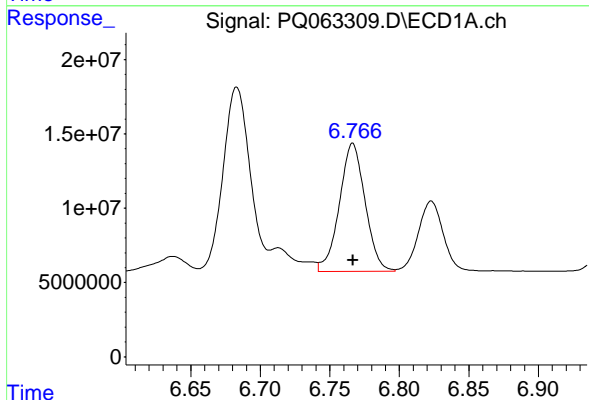
R.T.: 6.410 min
 Delta R.T.: -0.001 min
 Response: 150975258
 Conc: 532.87 ng/ml

Instrument :
 ECD_Q
 ClientSampleId :
 AR1660CCC500



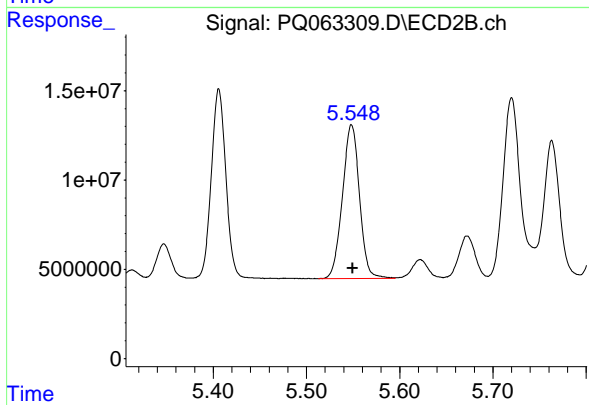
#32 AR-1260-2

R.T.: 5.406 min
 Delta R.T.: 0.000 min
 Response: 116593406
 Conc: 476.48 ng/ml



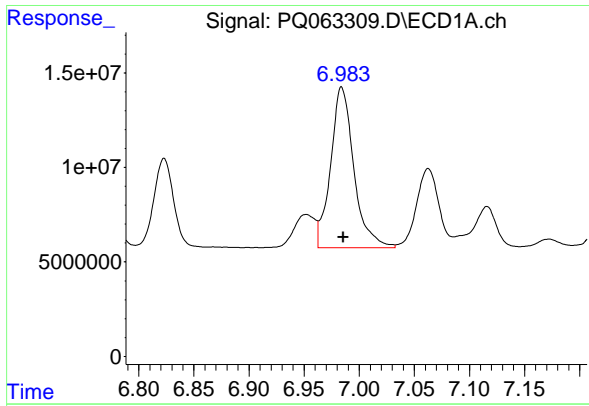
#33 AR-1260-3

R.T.: 6.766 min
 Delta R.T.: 0.000 min
 Response: 110790924
 Conc: 545.02 ng/ml



#33 AR-1260-3

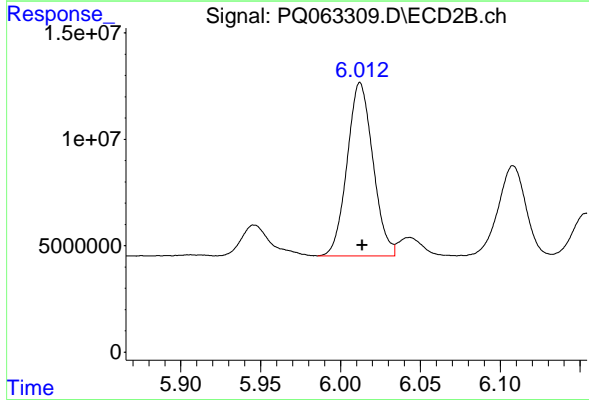
R.T.: 5.548 min
 Delta R.T.: -0.001 min
 Response: 109723791
 Conc: 464.00 ng/ml



#34 AR-1260-4

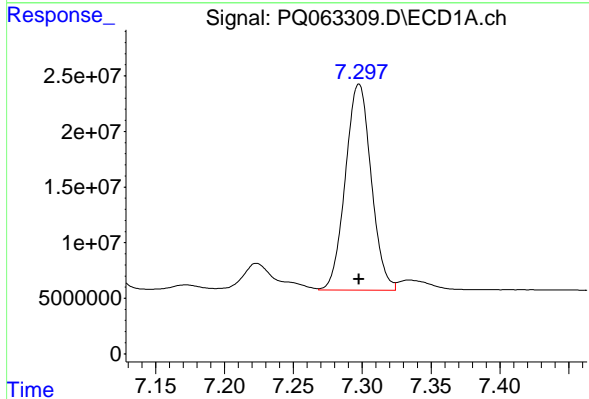
R.T.: 6.984 min
 Delta R.T.: -0.002 min
 Response: 124816121
 Conc: 523.60 ng/ml

Instrument :
 ECD_Q
 ClientSampleId :
 AR1660CCC500



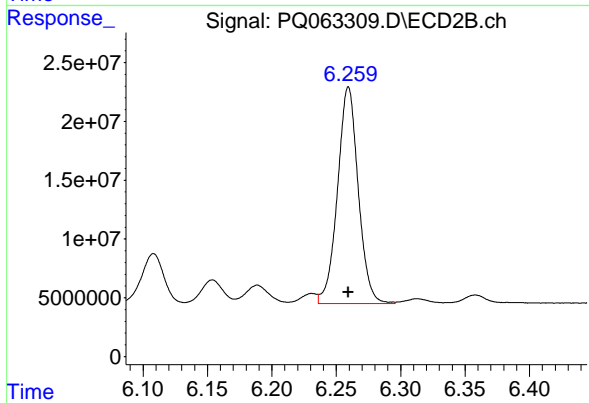
#34 AR-1260-4

R.T.: 6.012 min
 Delta R.T.: -0.001 min
 Response: 91898556
 Conc: 481.34 ng/ml



#35 AR-1260-5

R.T.: 7.298 min
 Delta R.T.: 0.000 min
 Response: 242241715
 Conc: 541.09 ng/ml



#35 AR-1260-5

R.T.: 6.259 min
 Delta R.T.: 0.000 min
 Response: 206427474
 Conc: 471.37 ng/ml