

Data Path : Z:\pestpcbsrv\HPCHEM1\ECD_Q\Data\PQ092220\
 Data File : PQ049920.D
 Signal(s) : Signal #1: ECD1A.ch Signal #2: ECD2B.ch
 Acq On : 22 Sep 2020 15:33
 Operator : DD\AJ
 Sample : AR1660CCC500
 Misc :
 ALS Vial : 3 Sample Multiplier: 1

Instrument :
 ECD_Q
 ClientSampled :

Integration File signal 1: autoint1.e
 Integration File signal 2: autoint2.e
 Quant Time: Sep 22 15:55:46 2020
 Quant Method : Z:\pestpcbsrv\HPCHEM1\ECD_Q\Method\PQ092120.M
 Quant Title : GC EXTRACTABLES
 QLast Update : Tue Sep 22 04:20:45 2020
 Response via : Initial Calibration
 Integrator: ChemStation

Volume Inj. : 2 µl
 Signal #1 Phase : ZB-MR1 Signal #2 Phase: ZB-MR2
 Signal #1 Info : 30Mx0.32mmx 0.50µ Signal #2 Info : 30M x 0.32mm x 0.25µm

Compound	RT#1	RT#2	Resp#1	Resp#2	ng/ml	ng/ml
System Monitoring Compounds						
1) SA Tetrachlo...	5.216	4.270	655.5E6	256.5E6	42.330	43.759
2) SA Decachlor...	11.418	9.625	336.0E6	254.3E6	47.659	53.074
Target Compounds						
3) L1 AR-1016-1	6.549	5.532	189.2E6	101.0E6	517.557	449.326
4) L1 AR-1016-2	6.573	5.552	266.4E6	138.7E6	469.365	454.663
5) L1 AR-1016-3	6.639	5.745	165.3E6	73408884	436.965	473.655
6) L1 AR-1016-4	6.749	5.795	136.3E6	57409642	460.919	468.624
7) L1 AR-1016-5	7.062	6.026	123.9E6	72155773	489.617	452.167
8) L2 AR-1221-1	5.466	4.525	22489710	7923244	128.095	134.062
9) L2 AR-1221-2	5.572	4.627	32562948	11562257	248.796	255.825
10) L2 AR-1221-3	5.660	4.716	113.8E6	45271272	315.060	314.796
11) L3 AR-1232-1	5.660	4.716	113.8E6	45271272	369.081	378.472
12) L3 AR-1232-2	6.252	5.552	138.8E6	138.7E6	895.095	1102.631
13) L3 AR-1232-3	6.573	5.745	266.4E6	73408884	914.278	1154.682 #
14) L3 AR-1232-4	6.749	5.841	136.3E6	69618805	729.069	1159.065 #
15) L3 AR-1232-5	6.842	6.026	117.7E6	72155773	838.226	1166.905 #
16) L4 AR-1242-1	6.549	5.532	189.2E6	101.0E6	643.573	622.419
17) L4 AR-1242-2	6.573	5.552	266.4E6	138.7E6	603.207	630.223
18) L4 AR-1242-3	6.639	5.745	165.3E6	73408884	555.723	646.100
19) L4 AR-1242-4	6.749	5.841	136.3E6	69618805	591.519	616.936
20) L4 AR-1242-5	7.532	6.406	18911810	57123117	89.245	366.623 #
21) L5 AR-1248-1	6.549	5.532	189.2E6	101.0E6	816.147	818.504
22) L5 AR-1248-2	6.842	5.795	117.7E6	57409642	344.668	369.253
23) L5 AR-1248-3	7.062	5.841	123.9E6	69618805	369.836	420.959
24) L5 AR-1248-4	7.492	6.026	23493894	72155773	64.999	362.936 #
25) L5 AR-1248-5	7.532	6.449	18911810	10303452	55.012	48.148
26) L6 AR-1254-1	7.461	6.406	79018965	57123117	222.599	180.964
27) L6 AR-1254-2	7.688	6.564	81058119	52329530	173.197	202.059
28) L6 AR-1254-3	8.075	7.004f	45715885	104.9E6	83.774	247.455 #
29) L6 AR-1254-4	8.371	7.224	33128417	17078864	78.639	57.579 #
30) L6 AR-1254-5	8.802	7.653	224.1E6	193.0E6	602.465	535.644
31) L7 AR-1260-1	8.241	7.122	167.1E6	134.6E6	451.619	523.072
32) L7 AR-1260-2	8.505	7.318	195.9E6	188.3E6	462.075	506.535
33) L7 AR-1260-3	8.872	7.475	151.3E6	158.7E6	469.699	462.742
34) L7 AR-1260-4	9.117	7.958	164.9E6	137.7E6	486.865	504.174
35) L7 AR-1260-5	9.465	8.204	337.9E6	386.7E6	489.190	545.742
36) L8 AR-1262-1	8.872	7.653	151.3E6	193.0E6	370.686	1033.825 #
37) L8 AR-1262-2	9.465	8.204	337.9E6	386.7E6	488.822	536.773
38) L8 AR-1262-3	9.794	8.492	91591402	86388424	283.308	303.323
39) L8 AR-1262-4	9.880f	8.555	151.7E6	256.6E6	387.568	525.380 #
40) L8 AR-1262-5	10.616	9.061	115.9E6	95601758	392.470	394.553
41) L9 AR-1268-1	9.794	8.492	91591402	86388424	103.558	95.262

Data Path : Z:\pestpcbsrv\HPCHEM1\ECD_Q\Data\PQ092220\
 Data File : PQ049920.D
 Signal(s) : Signal #1: ECD1A.ch Signal #2: ECD2B.ch
 Acq On : 22 Sep 2020 15:33
 Operator : DD\AJ
 Sample : AR1660CCC500
 Misc :
 ALS Vial : 3 Sample Multiplier: 1

Instrument :
 ECD_Q
 ClientSampleId :

Integration File signal 1: autoint1.e
 Integration File signal 2: autoint2.e
 Quant Time: Sep 22 15:55:46 2020
 Quant Method : Z:\pestpcbsrv\HPCHEM1\ECD_Q\Method\PQ092120.M
 Quant Title : GC EXTRACTABLES
 QLast Update : Tue Sep 22 04:20:45 2020
 Response via : Initial Calibration
 Integrator: ChemStation

Volume Inj. : 2 µl
 Signal #1 Phase : ZB-MR1 Signal #2 Phase: ZB-MR2
 Signal #1 Info : 30Mx0.32mmx 0.50µ Signal #2 Info : 30M x 0.32mm x 0.25µm

	Compound	RT#1	RT#2	Resp#1	Resp#2	ng/ml	ng/ml
42)	L9 AR-1268-2	9.794	8.555	91591402	256.6E6	103.558	334.832 #
43)	L9 AR-1268-3	0.000	8.767	0	6322942	N.D.	9.309 #
44)	L9 AR-1268-4	10.616	9.061	115.9E6	95601758	345.379	345.654
45)	L9 AR-1268-5	11.060	9.362	35829232	25305088	16.598	14.120

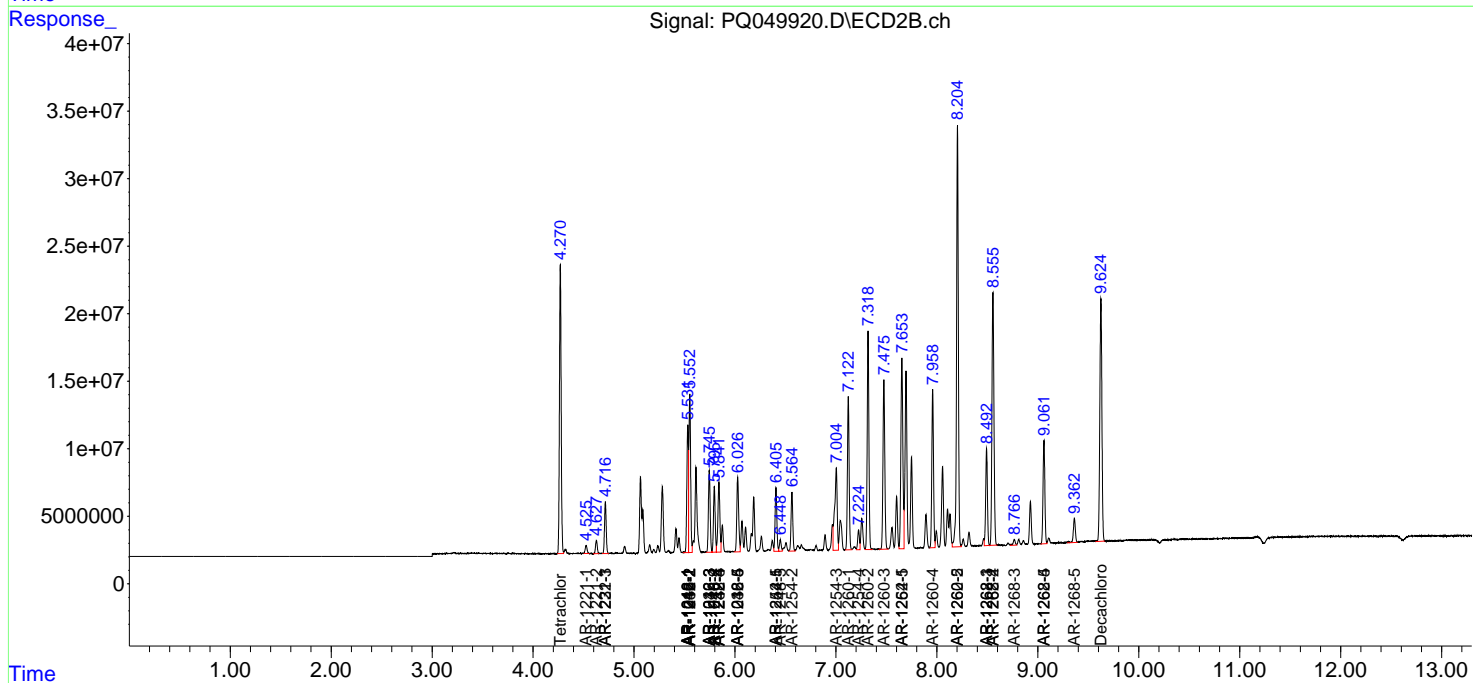
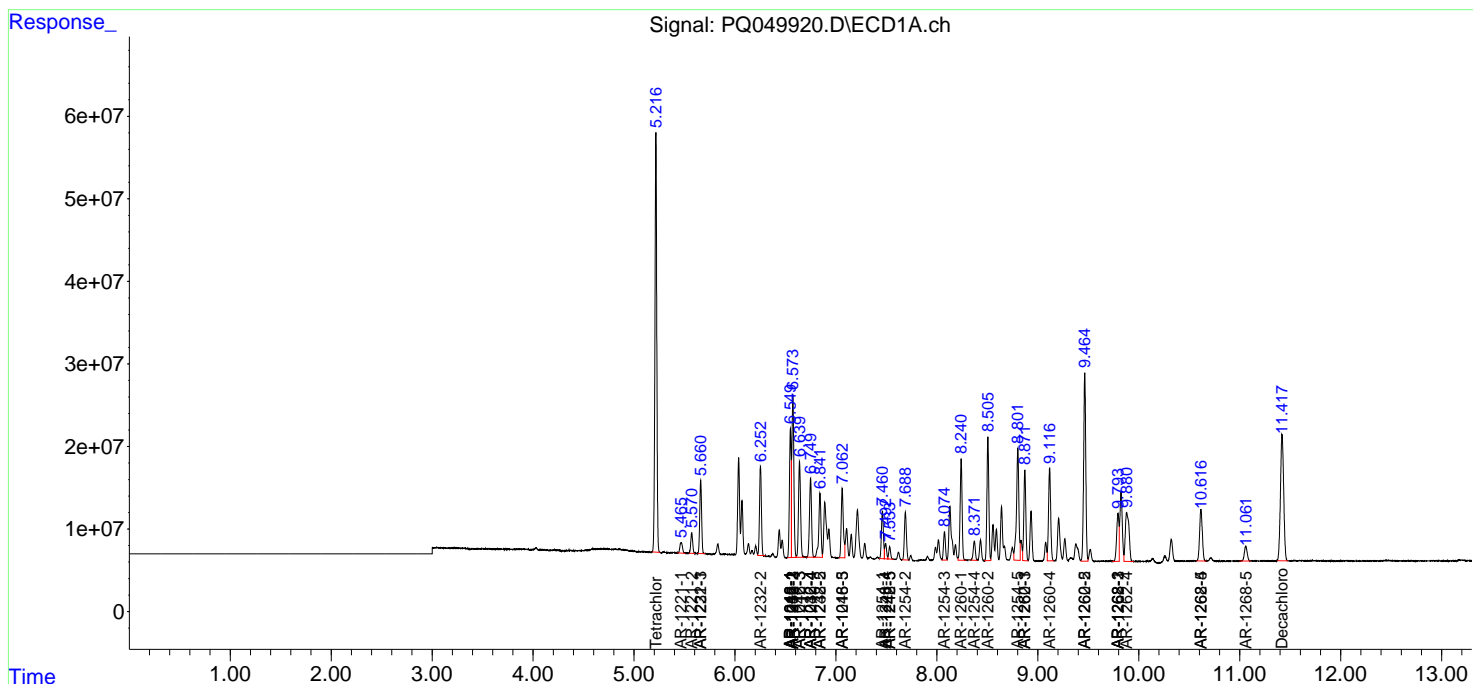
(f)=RT Delta > 1/2 Window (#)=Amounts differ by > 25% (m)=manual int.

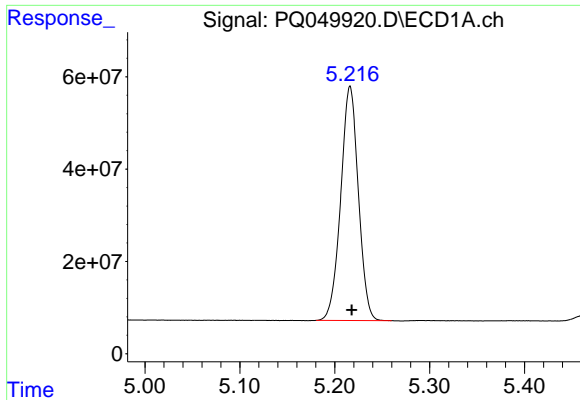
Data Path : Z:\pestpcbsrv\HPCHEM1\ECD_Q\Data\PQ092220\
 Data File : PQ049920.D
 Signal(s) : Signal #1: ECD1A.ch Signal #2: ECD2B.ch
 Acq On : 22 Sep 2020 15:33
 Operator : DD\AJ
 Sample : AR1660CCC500
 Misc :
 ALS Vial : 3 Sample Multiplier: 1

Instrument :
 ECD_Q
 ClientSampled :

Integration File signal 1: autoint1.e
 Integration File signal 2: autoint2.e
 Quant Time: Sep 22 15:55:46 2020
 Quant Method : Z:\pestpcbsrv\HPCHEM1\ECD_Q\Method\PQ092120.M
 Quant Title : GC EXTRACTABLES
 QLast Update : Tue Sep 22 04:20:45 2020
 Response via : Initial Calibration
 Integrator: ChemStation

Volume Inj. : 2 µl
 Signal #1 Phase : ZB-MR1 Signal #2 Phase: ZB-MR2
 Signal #1 Info : 30Mx0.32mmx 0.50µ Signal #2 Info : 30M x 0.32mm x 0.25µm

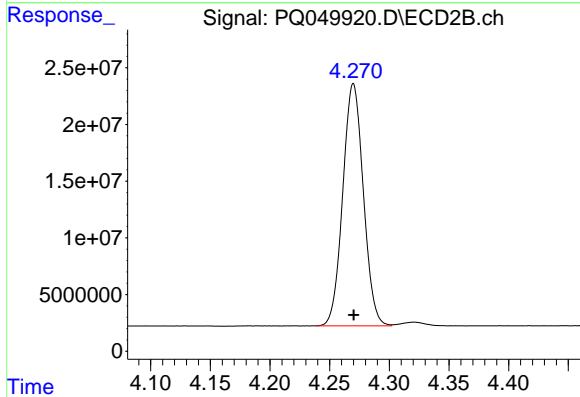




#1 Tetrachloro-m-xylene

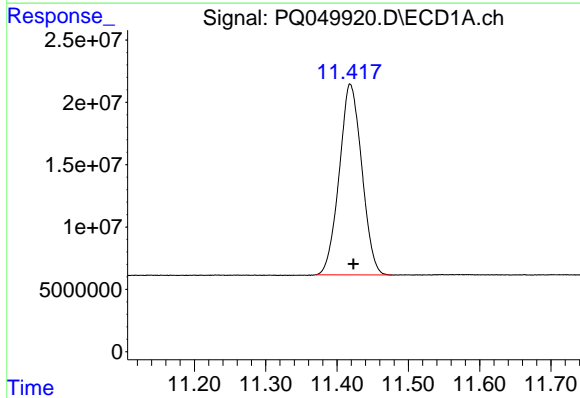
R.T.: 5.216 min
 Delta R.T.: -0.002 min
 Response: 655509283
 Conc: 42.33 ng/ml

Instrument :
 ECD_Q
 ClientSampleId :



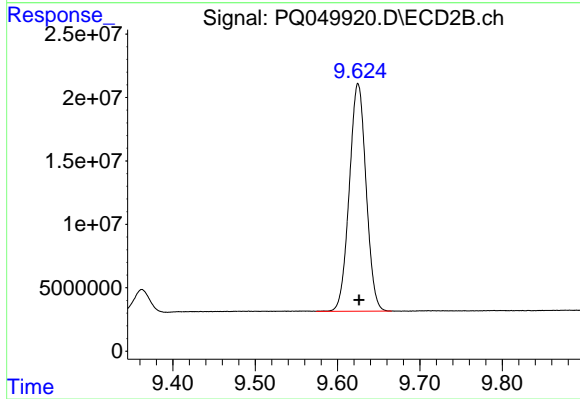
#1 Tetrachloro-m-xylene

R.T.: 4.270 min
 Delta R.T.: 0.000 min
 Response: 256499445
 Conc: 43.76 ng/ml



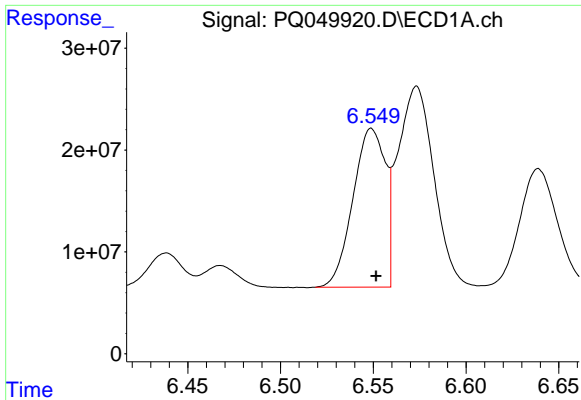
#2 Decachlorobiphenyl

R.T.: 11.418 min
 Delta R.T.: -0.004 min
 Response: 335992460
 Conc: 47.66 ng/ml



#2 Decachlorobiphenyl

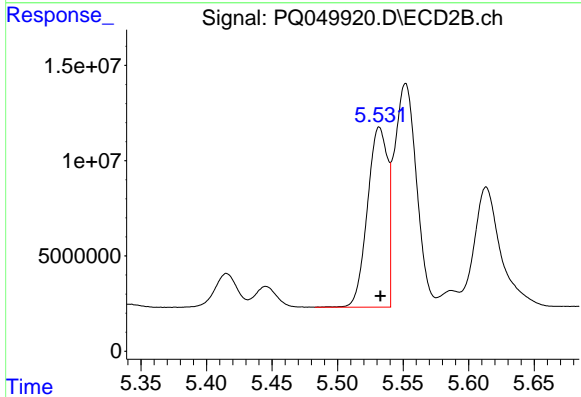
R.T.: 9.625 min
 Delta R.T.: -0.001 min
 Response: 254338035
 Conc: 53.07 ng/ml



#3 AR-1016-1

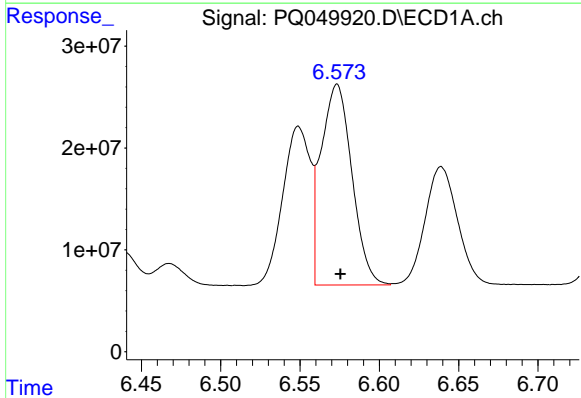
R.T.: 6.549 min
 Delta R.T.: -0.002 min
 Response: 189195490
 Conc: 517.56 ng/ml

Instrument :
 ECD_Q
 ClientSampleId :



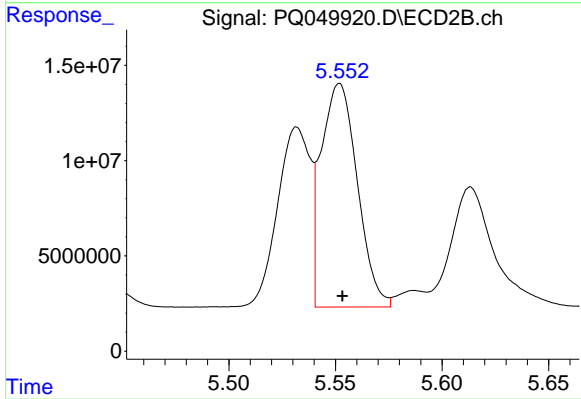
#3 AR-1016-1

R.T.: 5.532 min
 Delta R.T.: 0.000 min
 Response: 101026086
 Conc: 449.33 ng/ml



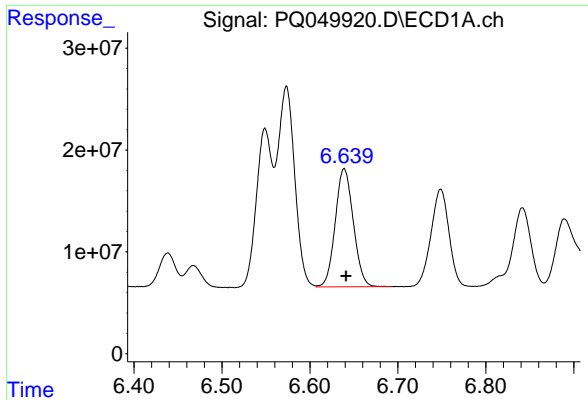
#4 AR-1016-2

R.T.: 6.573 min
 Delta R.T.: -0.002 min
 Response: 266437729
 Conc: 469.36 ng/ml



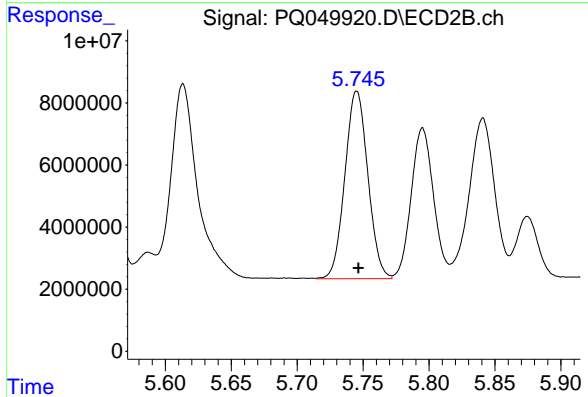
#4 AR-1016-2

R.T.: 5.552 min
 Delta R.T.: -0.001 min
 Response: 138672579
 Conc: 454.66 ng/ml

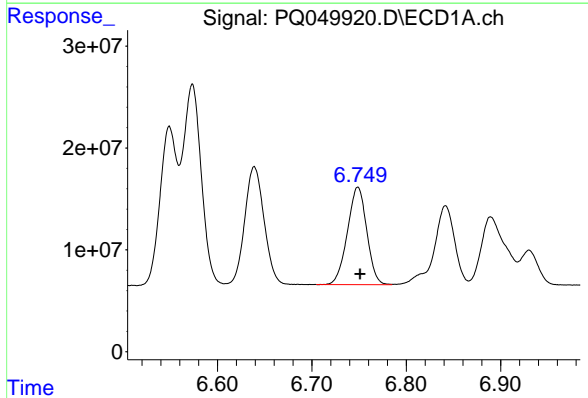


#5 AR-1016-3
R.T.: 6.639 min
Delta R.T.: -0.002 min
Response: 165256231
Conc: 436.96 ng/ml

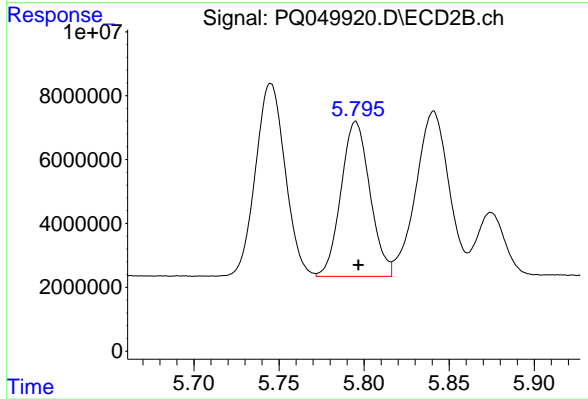
Instrument :
ECD_Q
ClientSampled :



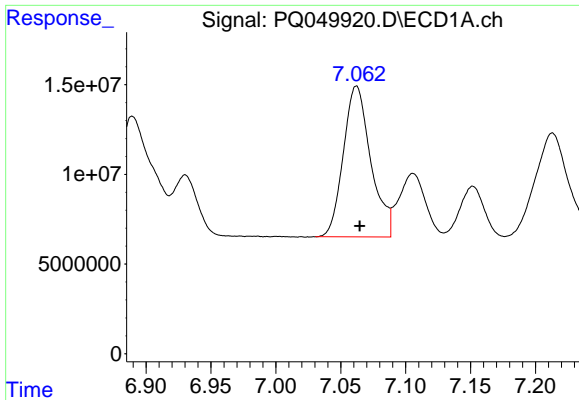
#5 AR-1016-3
R.T.: 5.745 min
Delta R.T.: -0.001 min
Response: 73408884
Conc: 473.65 ng/ml



#6 AR-1016-4
R.T.: 6.749 min
Delta R.T.: -0.002 min
Response: 136320923
Conc: 460.92 ng/ml



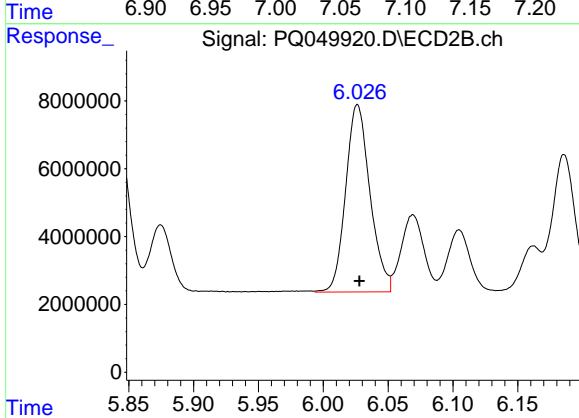
#6 AR-1016-4
R.T.: 5.795 min
Delta R.T.: -0.002 min
Response: 57409642
Conc: 468.62 ng/ml



#7 AR-1016-5

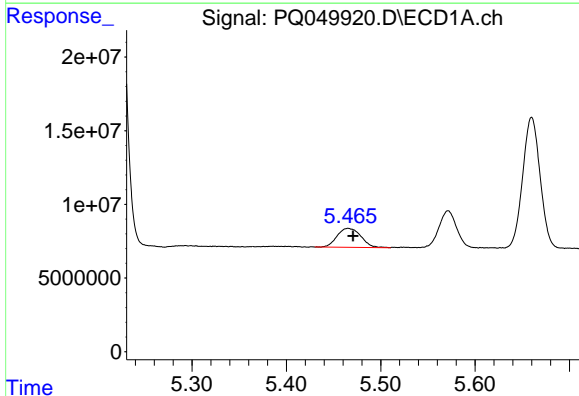
R.T.: 7.062 min
 Delta R.T.: -0.003 min
 Response: 123878858
 Conc: 489.62 ng/ml

Instrument :
 ECD_Q
 ClientSampled :



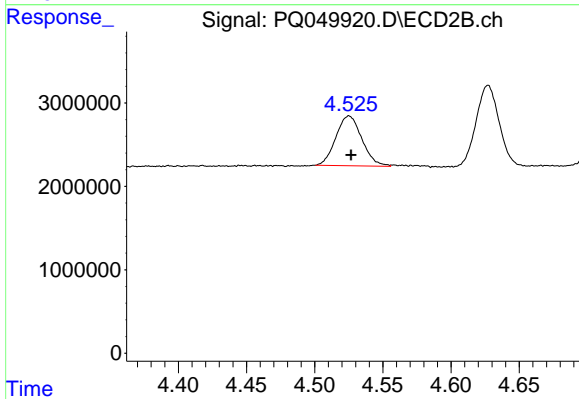
#7 AR-1016-5

R.T.: 6.026 min
 Delta R.T.: -0.001 min
 Response: 72155773
 Conc: 452.17 ng/ml



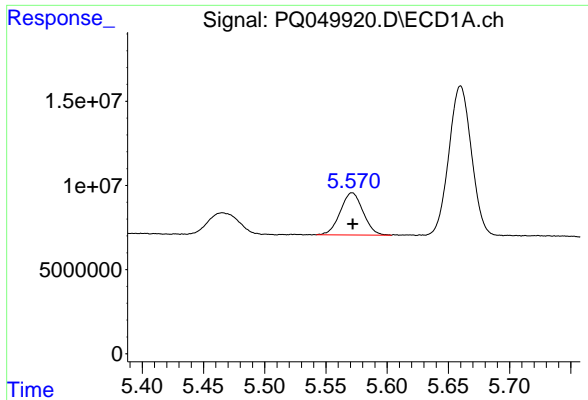
#8 AR-1221-1

R.T.: 5.466 min
 Delta R.T.: -0.005 min
 Response: 22489710
 Conc: 128.10 ng/ml



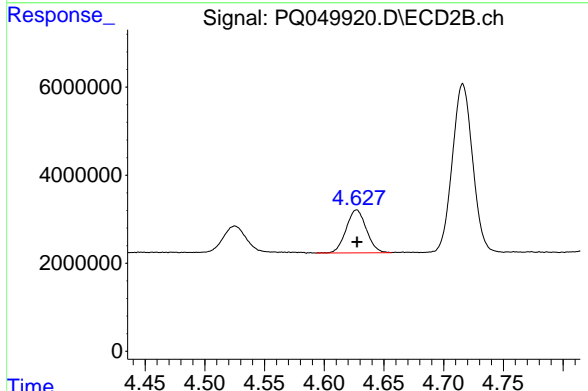
#8 AR-1221-1

R.T.: 4.525 min
 Delta R.T.: -0.001 min
 Response: 7923244
 Conc: 134.06 ng/ml

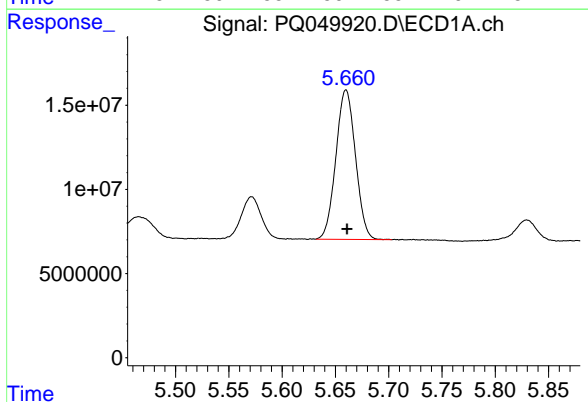


#9 AR-1221-2
 R.T.: 5.572 min
 Delta R.T.: 0.000 min
 Response: 32562948
 Conc: 248.80 ng/ml

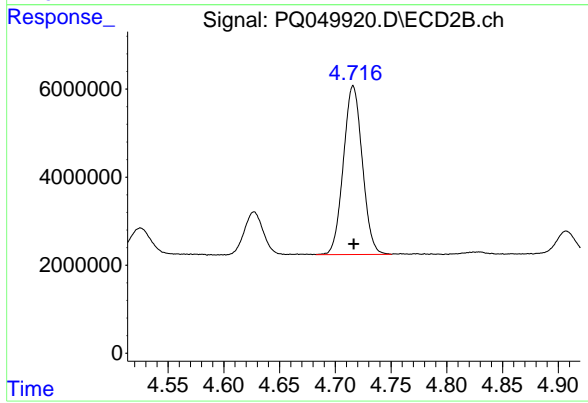
Instrument :
 ECD_Q
 ClientSampled :



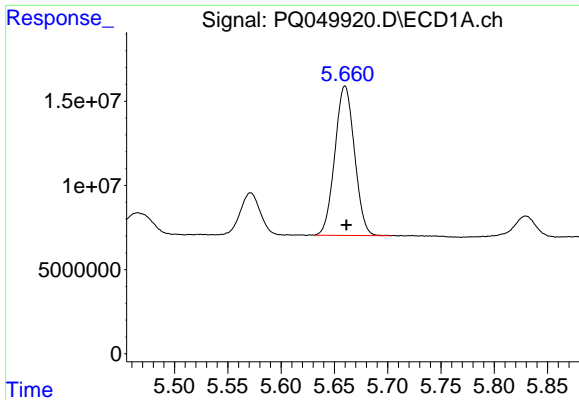
#9 AR-1221-2
 R.T.: 4.627 min
 Delta R.T.: 0.000 min
 Response: 11562257
 Conc: 255.82 ng/ml



#10 AR-1221-3
 R.T.: 5.660 min
 Delta R.T.: 0.000 min
 Response: 113778368
 Conc: 315.06 ng/ml



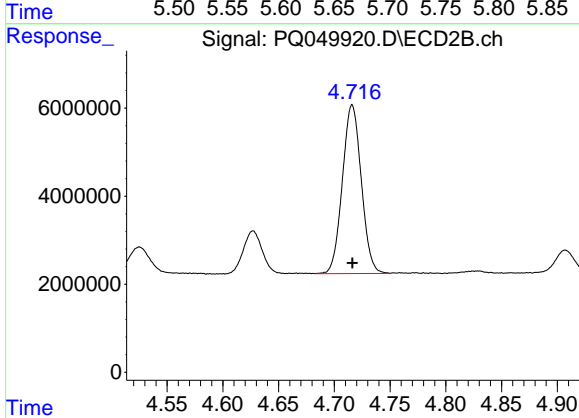
#10 AR-1221-3
 R.T.: 4.716 min
 Delta R.T.: 0.000 min
 Response: 45271272
 Conc: 314.80 ng/ml



#11 AR-1232-1

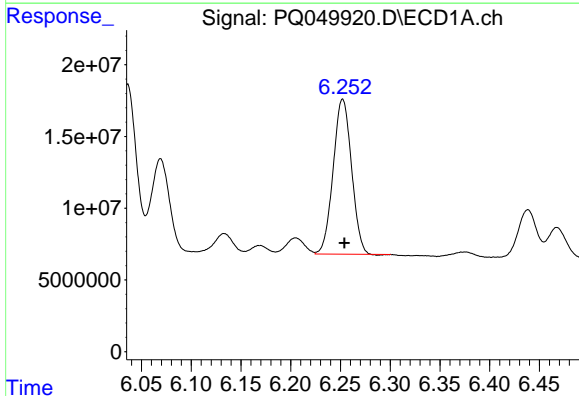
R.T.: 5.660 min
 Delta R.T.: -0.001 min
 Response: 113778368
 Conc: 369.08 ng/ml

Instrument :
 ECD_Q
 ClientSampleId :



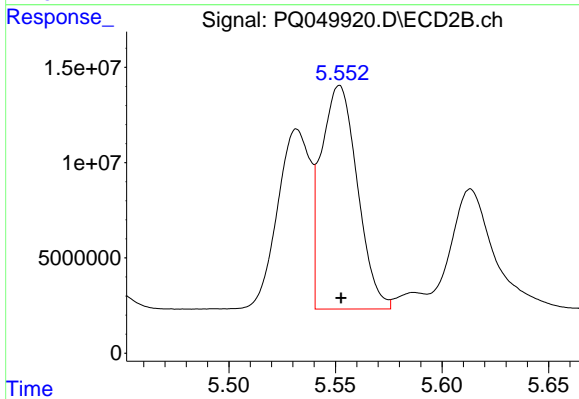
#11 AR-1232-1

R.T.: 4.716 min
 Delta R.T.: 0.000 min
 Response: 45271272
 Conc: 378.47 ng/ml



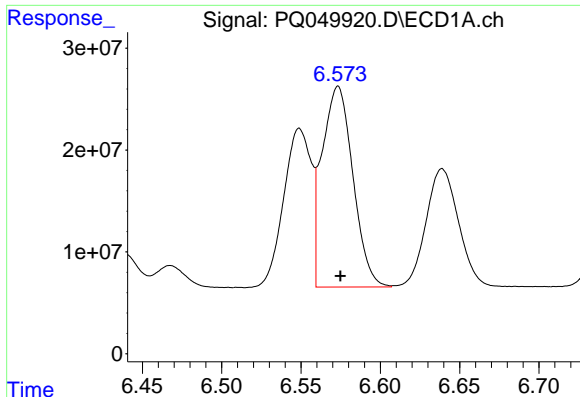
#12 AR-1232-2

R.T.: 6.252 min
 Delta R.T.: -0.002 min
 Response: 138769684
 Conc: 895.09 ng/ml



#12 AR-1232-2

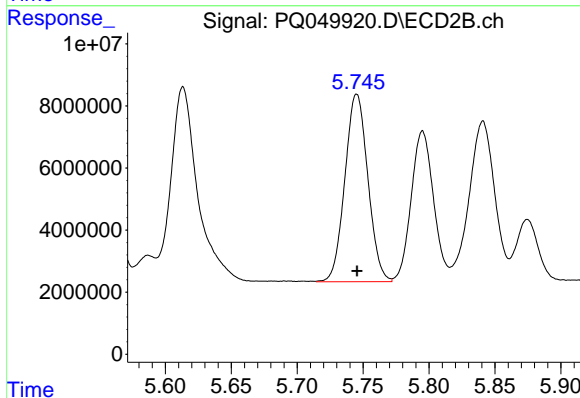
R.T.: 5.552 min
 Delta R.T.: 0.000 min
 Response: 138672579
 Conc: 1102.63 ng/ml



#13 AR-1232-3

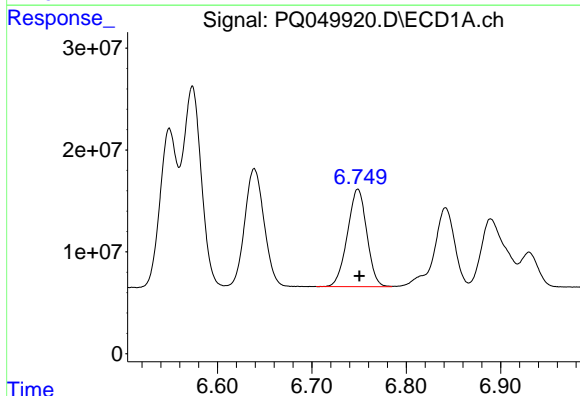
R.T.: 6.573 min
Delta R.T.: -0.001 min
Response: 266437729
Conc: 914.28 ng/ml

Instrument :
ECD_Q
ClientSampled :



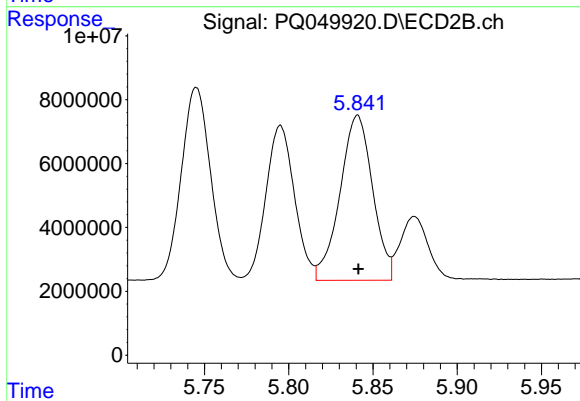
#13 AR-1232-3

R.T.: 5.745 min
Delta R.T.: 0.000 min
Response: 73408884
Conc: 1154.68 ng/ml



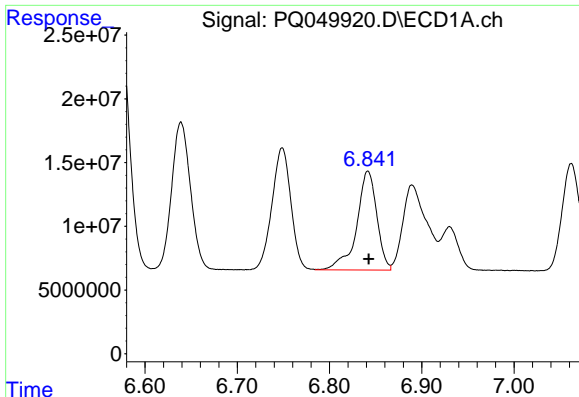
#14 AR-1232-4

R.T.: 6.749 min
Delta R.T.: -0.002 min
Response: 136320923
Conc: 729.07 ng/ml



#14 AR-1232-4

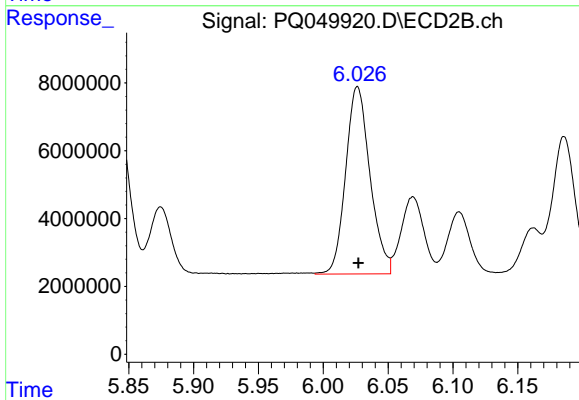
R.T.: 5.841 min
Delta R.T.: 0.000 min
Response: 69618805
Conc: 1159.06 ng/ml



#15 AR-1232-5

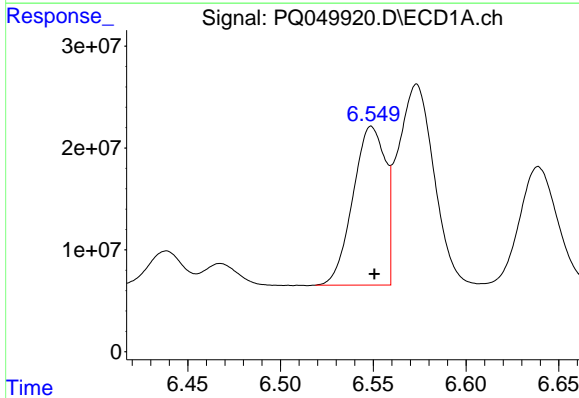
R.T.: 6.842 min
 Delta R.T.: 0.000 min
 Response: 117706101
 Conc: 838.23 ng/ml

Instrument :
 ECD_Q
 ClientSampled :



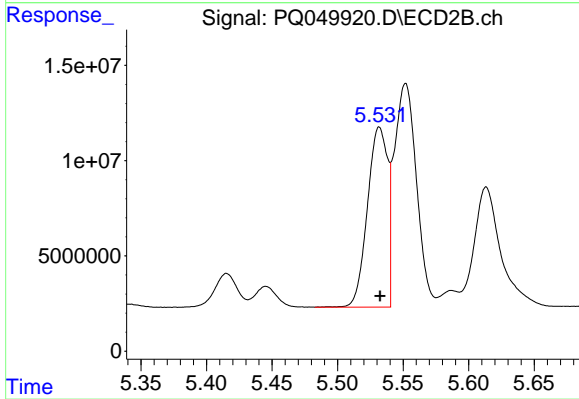
#15 AR-1232-5

R.T.: 6.026 min
 Delta R.T.: 0.000 min
 Response: 72155773
 Conc: 1166.90 ng/ml



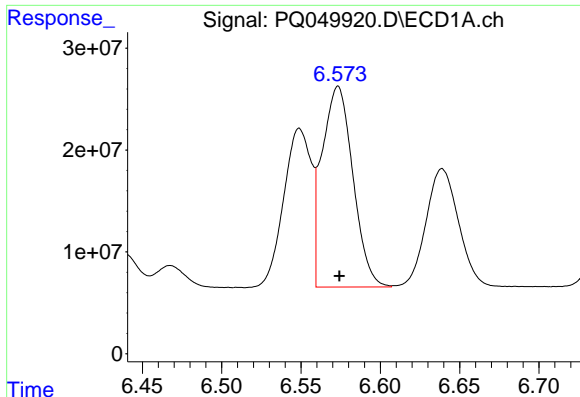
#16 AR-1242-1

R.T.: 6.549 min
 Delta R.T.: -0.002 min
 Response: 189195490
 Conc: 643.57 ng/ml



#16 AR-1242-1

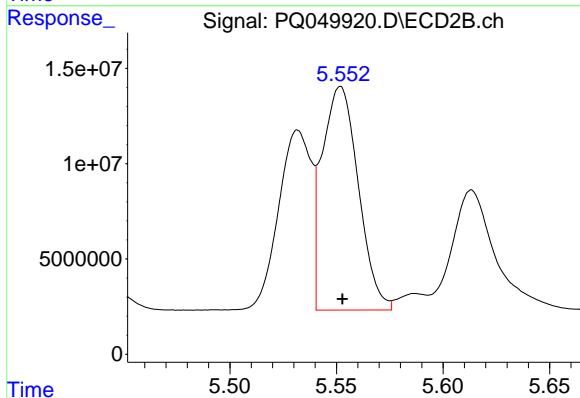
R.T.: 5.532 min
 Delta R.T.: 0.000 min
 Response: 101026086
 Conc: 622.42 ng/ml



#17 AR-1242-2

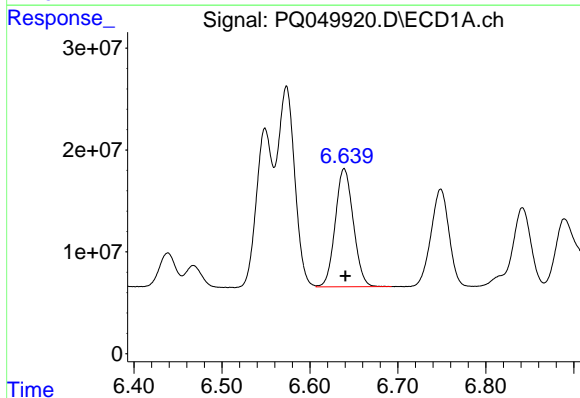
R.T.: 6.573 min
 Delta R.T.: 0.000 min
 Response: 266437729
 Conc: 603.21 ng/ml

Instrument :
 ECD_Q
 ClientSampled :



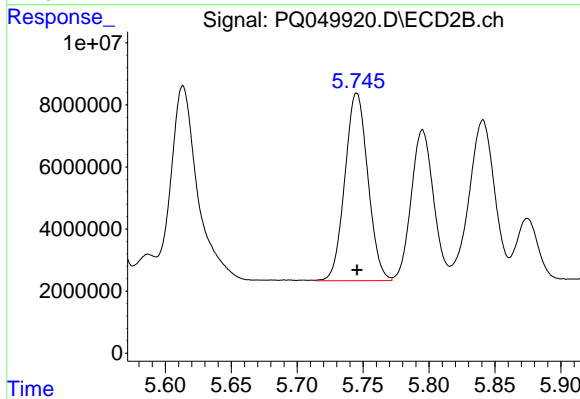
#17 AR-1242-2

R.T.: 5.552 min
 Delta R.T.: 0.000 min
 Response: 138672579
 Conc: 630.22 ng/ml



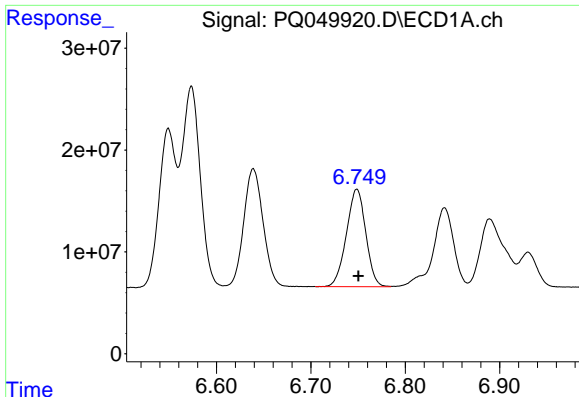
#18 AR-1242-3

R.T.: 6.639 min
 Delta R.T.: -0.002 min
 Response: 165256231
 Conc: 555.72 ng/ml



#18 AR-1242-3

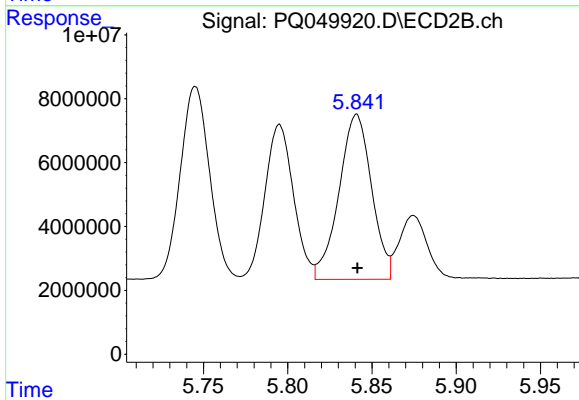
R.T.: 5.745 min
 Delta R.T.: 0.000 min
 Response: 73408884
 Conc: 646.10 ng/ml



#19 AR-1242-4

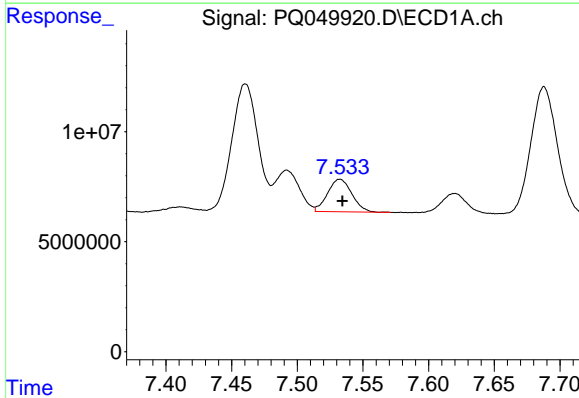
R.T.: 6.749 min
 Delta R.T.: -0.002 min
 Response: 136320923
 Conc: 591.52 ng/ml

Instrument :
 ECD_Q
 ClientSampled :



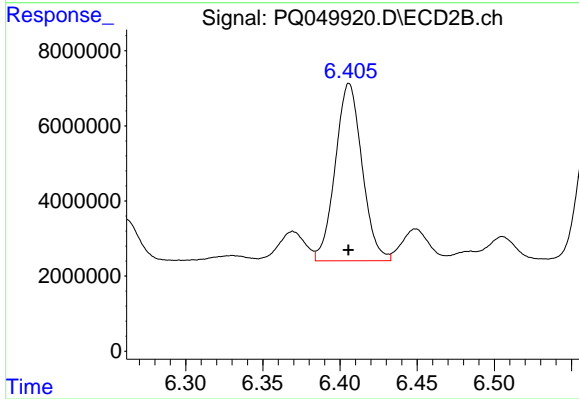
#19 AR-1242-4

R.T.: 5.841 min
 Delta R.T.: 0.000 min
 Response: 69618805
 Conc: 616.94 ng/ml



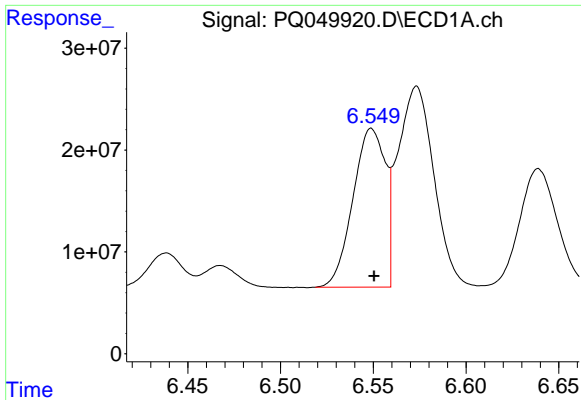
#20 AR-1242-5

R.T.: 7.532 min
 Delta R.T.: -0.002 min
 Response: 18911810
 Conc: 89.25 ng/ml



#20 AR-1242-5

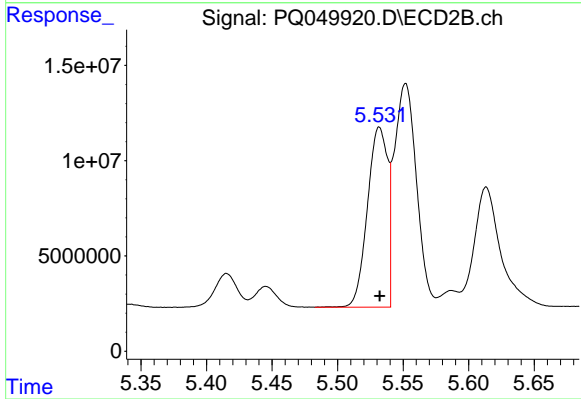
R.T.: 6.406 min
 Delta R.T.: 0.000 min
 Response: 57123117
 Conc: 366.62 ng/ml



#21 AR-1248-1

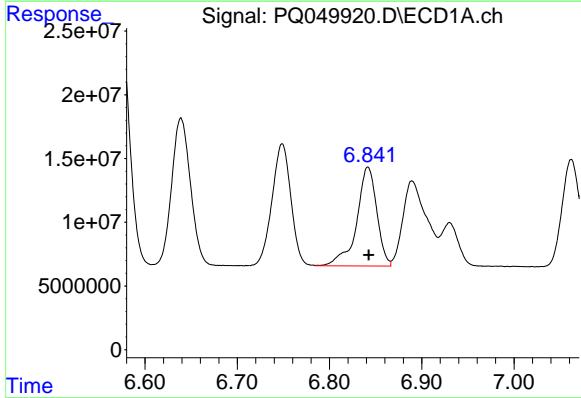
R.T.: 6.549 min
 Delta R.T.: -0.002 min
 Response: 189195490
 Conc: 816.15 ng/ml

Instrument :
 ECD_Q
 ClientSampled :



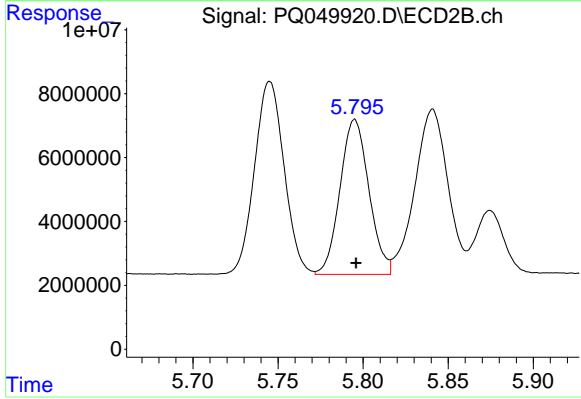
#21 AR-1248-1

R.T.: 5.532 min
 Delta R.T.: 0.000 min
 Response: 101026086
 Conc: 818.50 ng/ml



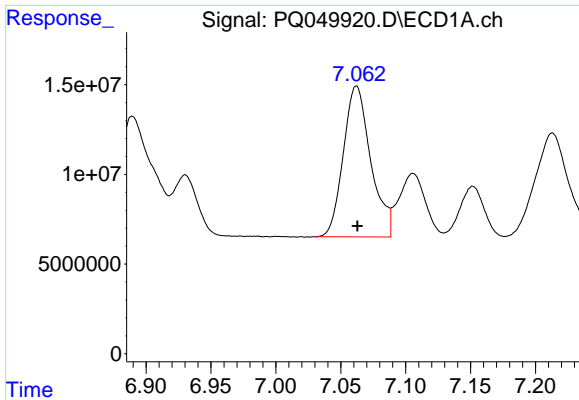
#22 AR-1248-2

R.T.: 6.842 min
 Delta R.T.: 0.000 min
 Response: 117706101
 Conc: 344.67 ng/ml



#22 AR-1248-2

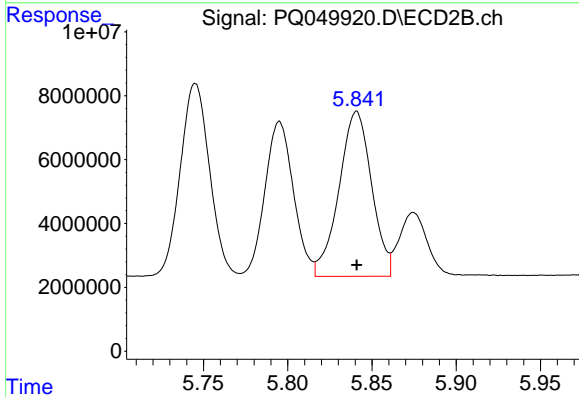
R.T.: 5.795 min
 Delta R.T.: 0.000 min
 Response: 57409642
 Conc: 369.25 ng/ml



#23 AR-1248-3

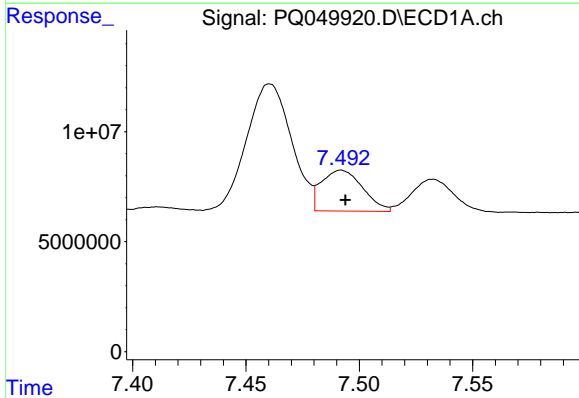
R.T.: 7.062 min
 Delta R.T.: 0.000 min
 Response: 123878858
 Conc: 369.84 ng/ml

Instrument :
 ECD_Q
 ClientSampled :



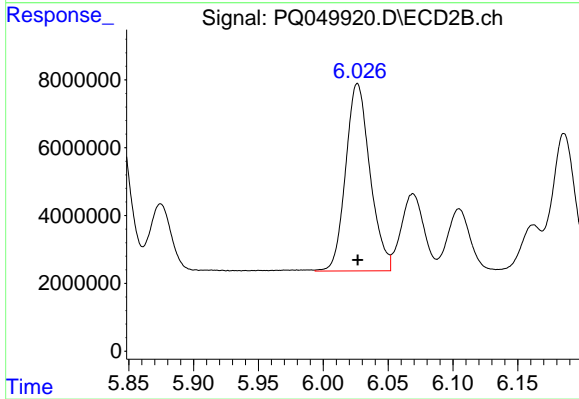
#23 AR-1248-3

R.T.: 5.841 min
 Delta R.T.: 0.000 min
 Response: 69618805
 Conc: 420.96 ng/ml



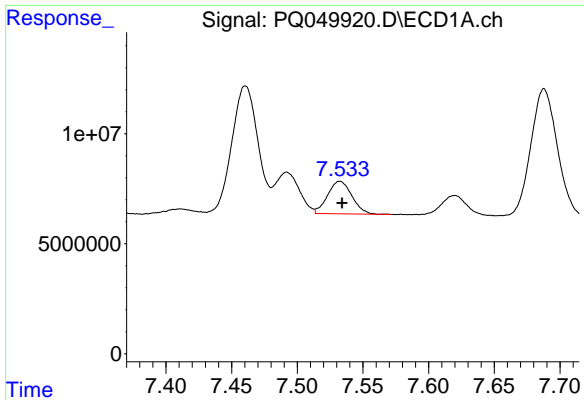
#24 AR-1248-4

R.T.: 7.492 min
 Delta R.T.: -0.002 min
 Response: 23493894
 Conc: 65.00 ng/ml



#24 AR-1248-4

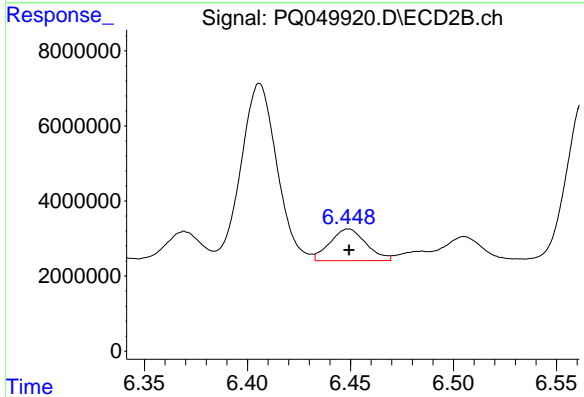
R.T.: 6.026 min
 Delta R.T.: 0.000 min
 Response: 72155773
 Conc: 362.94 ng/ml



#25 AR-1248-5

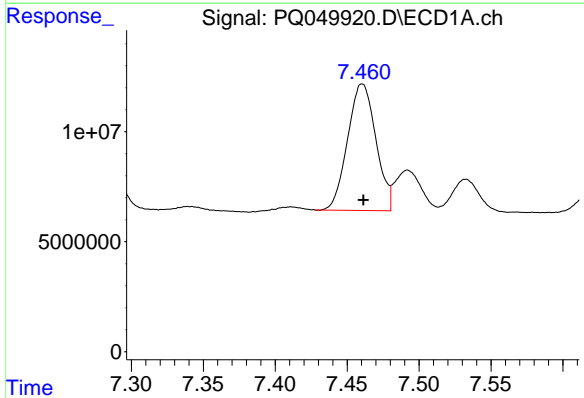
R.T.: 7.532 min
 Delta R.T.: -0.002 min
 Response: 18911810
 Conc: 55.01 ng/ml

Instrument :
 ECD_Q
 ClientSampled :



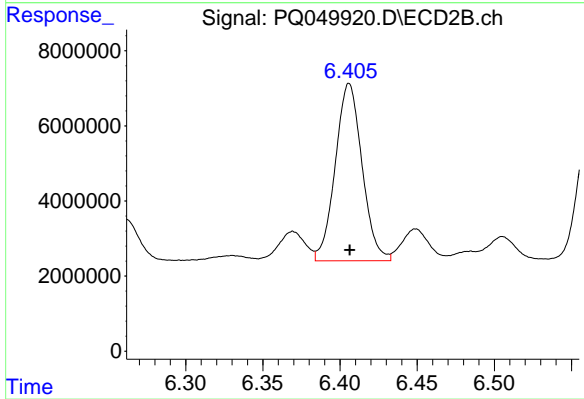
#25 AR-1248-5

R.T.: 6.449 min
 Delta R.T.: 0.000 min
 Response: 10303452
 Conc: 48.15 ng/ml



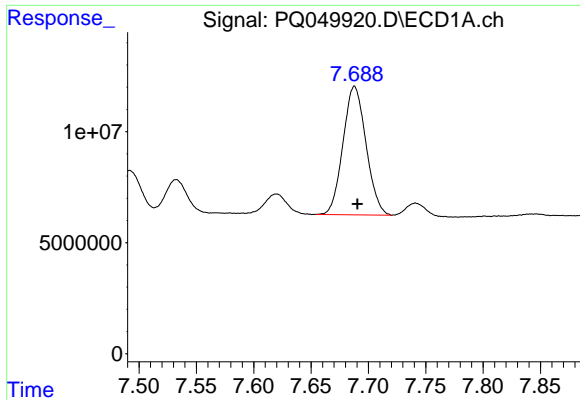
#26 AR-1254-1

R.T.: 7.461 min
 Delta R.T.: 0.000 min
 Response: 79018965
 Conc: 222.60 ng/ml



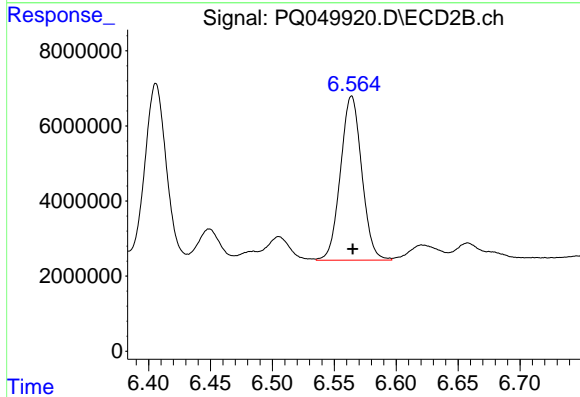
#26 AR-1254-1

R.T.: 6.406 min
 Delta R.T.: 0.000 min
 Response: 57123117
 Conc: 180.96 ng/ml

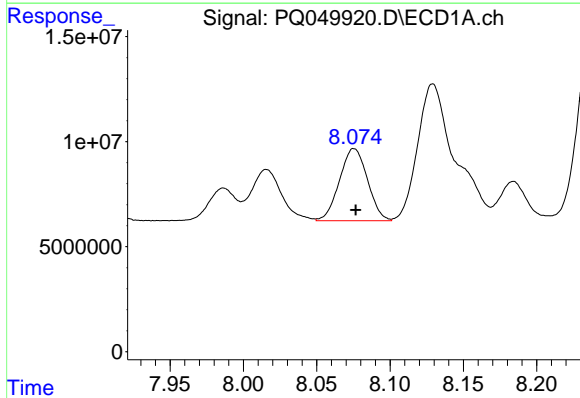


#27 AR-1254-2
 R.T.: 7.688 min
 Delta R.T.: -0.002 min
 Response: 81058119
 Conc: 173.20 ng/ml

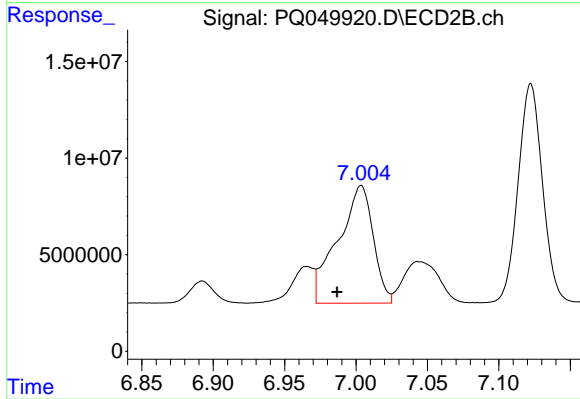
Instrument :
 ECD_Q
 ClientSampled :



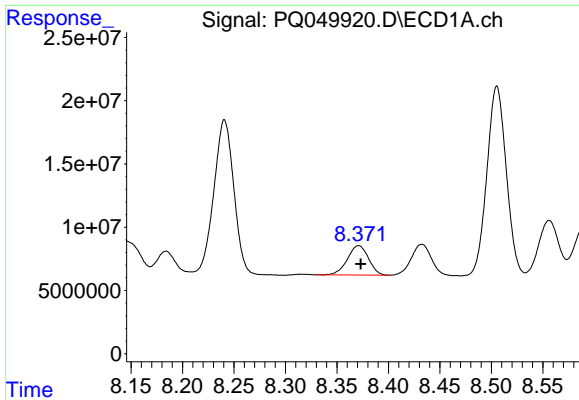
#27 AR-1254-2
 R.T.: 6.564 min
 Delta R.T.: 0.000 min
 Response: 52329530
 Conc: 202.06 ng/ml



#28 AR-1254-3
 R.T.: 8.075 min
 Delta R.T.: -0.001 min
 Response: 45715885
 Conc: 83.77 ng/ml

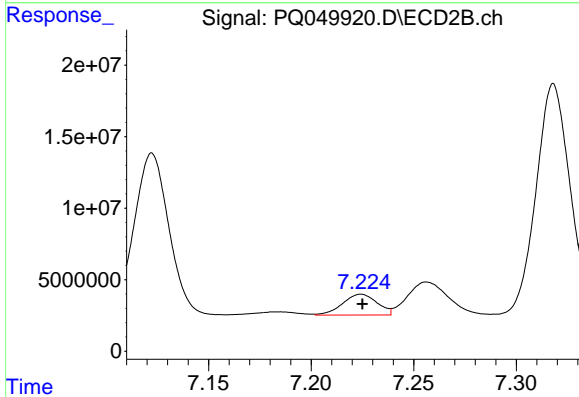


#28 AR-1254-3
 R.T.: 7.004 min
 Delta R.T.: 0.017 min
 Response: 104884665
 Conc: 247.46 ng/ml

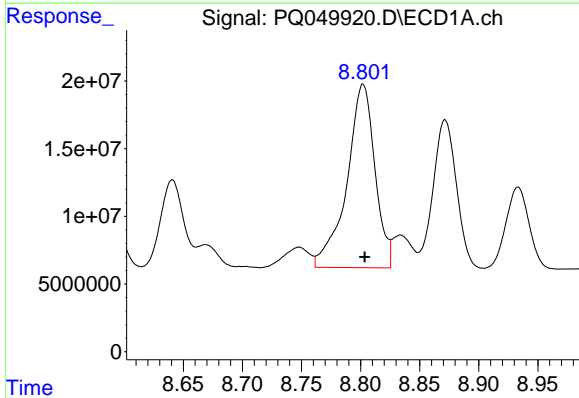


#29 AR-1254-4
 R.T.: 8.371 min
 Delta R.T.: -0.002 min
 Response: 33128417
 Conc: 78.64 ng/ml

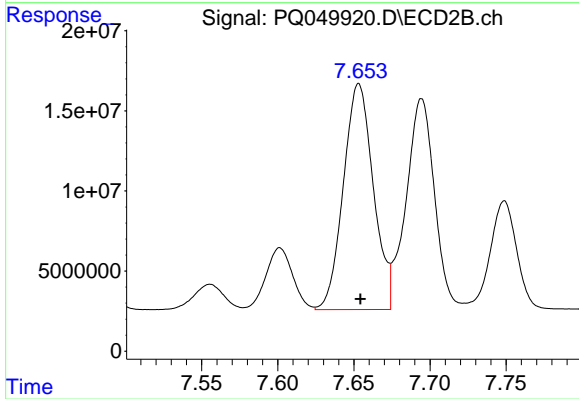
Instrument :
 ECD_Q
 ClientSampled :



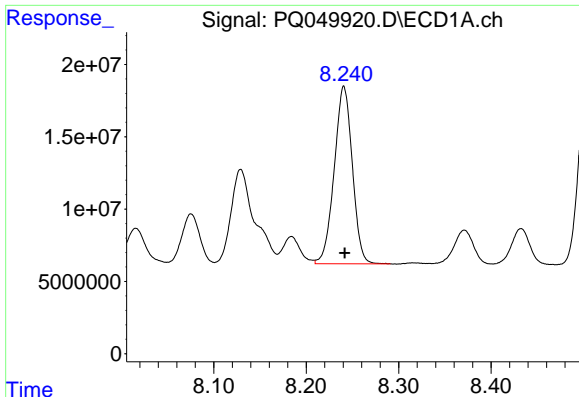
#29 AR-1254-4
 R.T.: 7.224 min
 Delta R.T.: 0.000 min
 Response: 17078864
 Conc: 57.58 ng/ml



#30 AR-1254-5
 R.T.: 8.802 min
 Delta R.T.: -0.002 min
 Response: 224070310
 Conc: 602.46 ng/ml



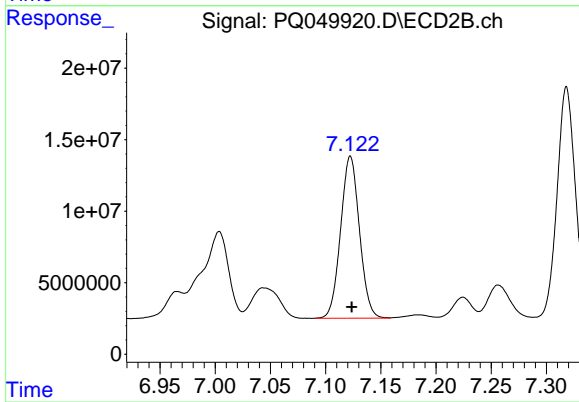
#30 AR-1254-5
 R.T.: 7.653 min
 Delta R.T.: -0.001 min
 Response: 192992955
 Conc: 535.64 ng/ml



#31 AR-1260-1

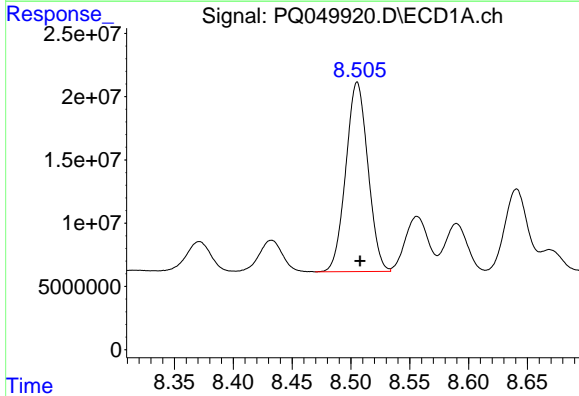
R.T.: 8.241 min
 Delta R.T.: -0.001 min
 Response: 167085038
 Conc: 451.62 ng/ml

Instrument :
 ECD_Q
 ClientSampled :



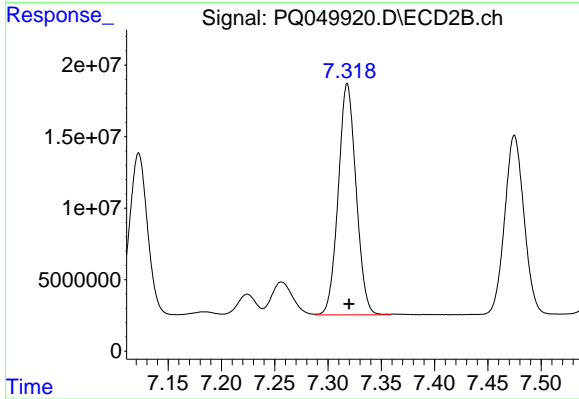
#31 AR-1260-1

R.T.: 7.122 min
 Delta R.T.: -0.001 min
 Response: 134566433
 Conc: 523.07 ng/ml



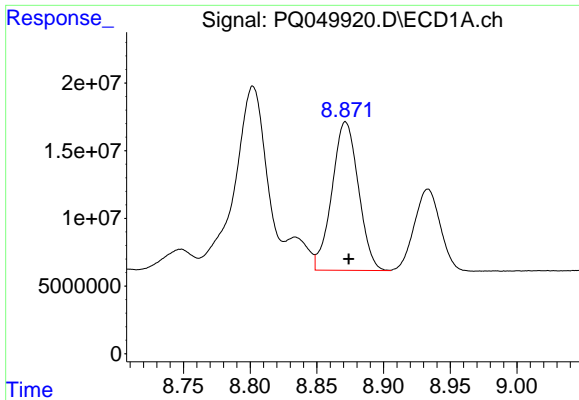
#32 AR-1260-2

R.T.: 8.505 min
 Delta R.T.: -0.002 min
 Response: 195851560
 Conc: 462.07 ng/ml



#32 AR-1260-2

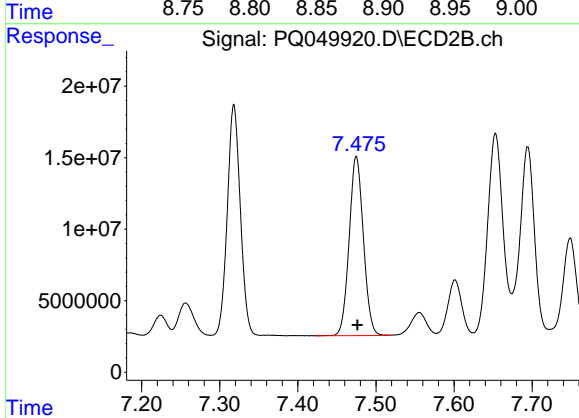
R.T.: 7.318 min
 Delta R.T.: -0.002 min
 Response: 188279259
 Conc: 506.54 ng/ml



#33 AR-1260-3

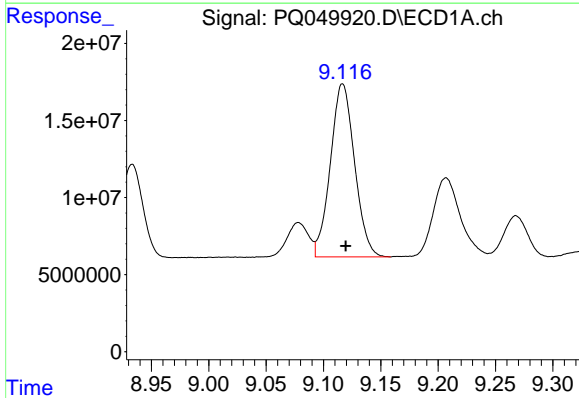
R.T.: 8.872 min
 Delta R.T.: -0.002 min
 Response: 151349581
 Conc: 469.70 ng/ml

Instrument :
 ECD_Q
 ClientSampled :



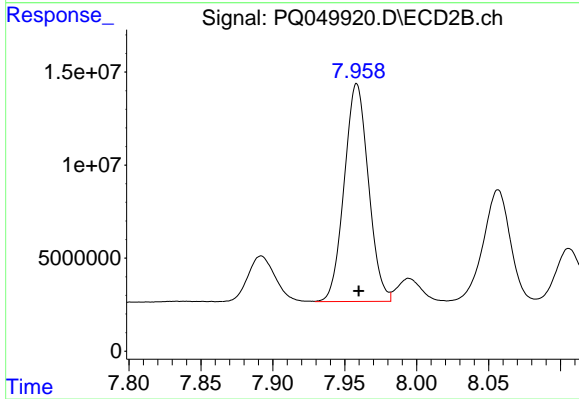
#33 AR-1260-3

R.T.: 7.475 min
 Delta R.T.: -0.001 min
 Response: 158662597
 Conc: 462.74 ng/ml



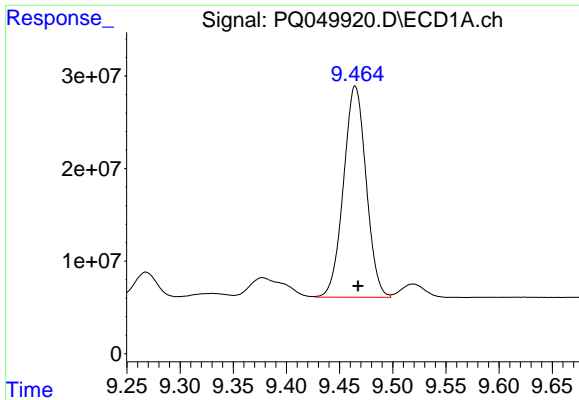
#34 AR-1260-4

R.T.: 9.117 min
 Delta R.T.: -0.003 min
 Response: 164940867
 Conc: 486.86 ng/ml



#34 AR-1260-4

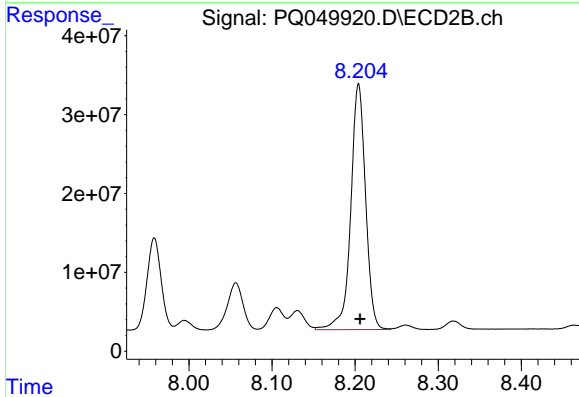
R.T.: 7.958 min
 Delta R.T.: -0.001 min
 Response: 137669383
 Conc: 504.17 ng/ml



#35 AR-1260-5

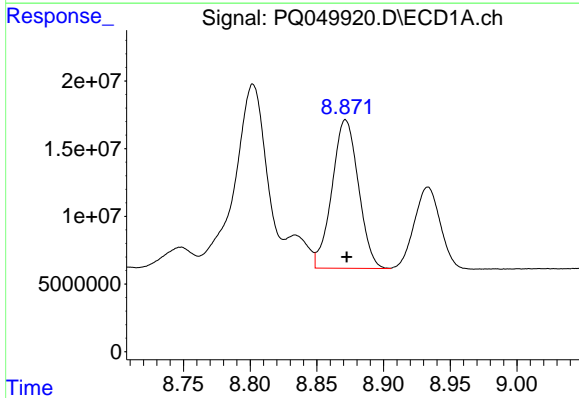
R.T.: 9.465 min
 Delta R.T.: -0.003 min
 Response: 337924695
 Conc: 489.19 ng/ml

Instrument :
 ECD_Q
 ClientSampled :



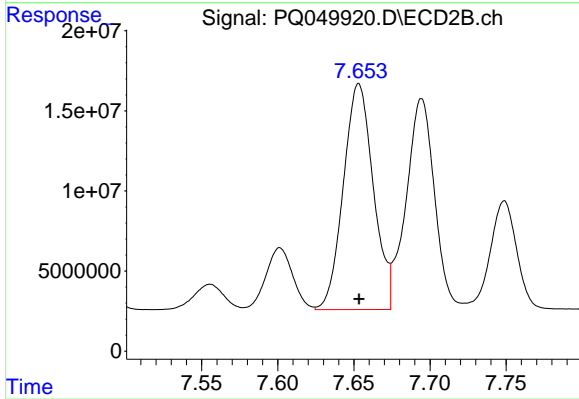
#35 AR-1260-5

R.T.: 8.204 min
 Delta R.T.: -0.002 min
 Response: 386694425
 Conc: 545.74 ng/ml



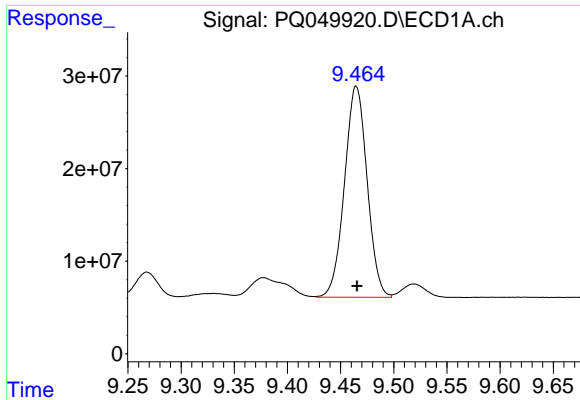
#36 AR-1262-1

R.T.: 8.872 min
 Delta R.T.: 0.000 min
 Response: 151349581
 Conc: 370.69 ng/ml



#36 AR-1262-1

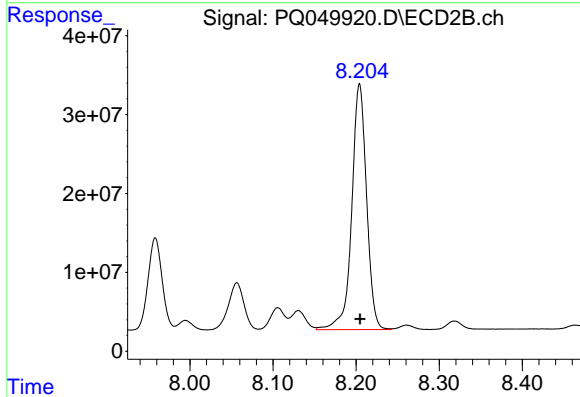
R.T.: 7.653 min
 Delta R.T.: 0.000 min
 Response: 192992955
 Conc: 1033.83 ng/ml



#37 AR-1262-2

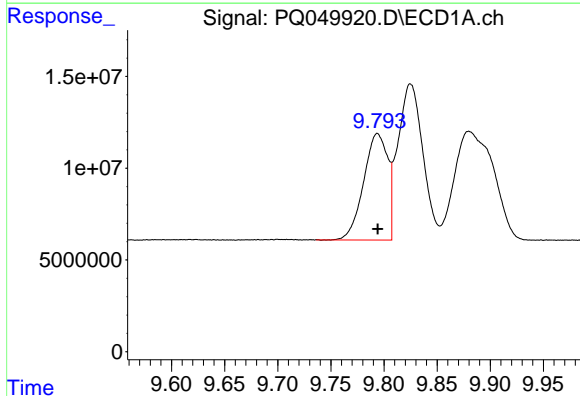
R.T.: 9.465 min
 Delta R.T.: 0.000 min
 Response: 337924695
 Conc: 488.82 ng/ml

Instrument :
 ECD_Q
 ClientSampleId :



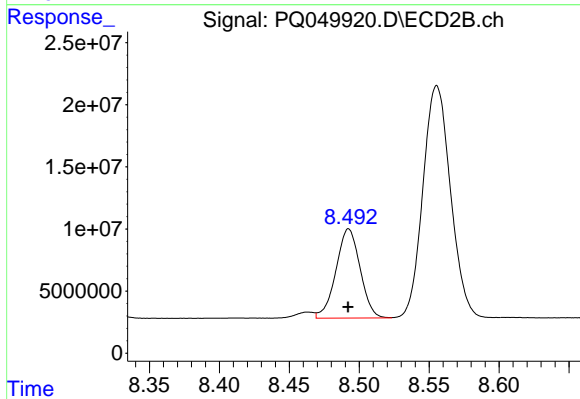
#37 AR-1262-2

R.T.: 8.204 min
 Delta R.T.: 0.000 min
 Response: 386694425
 Conc: 536.77 ng/ml



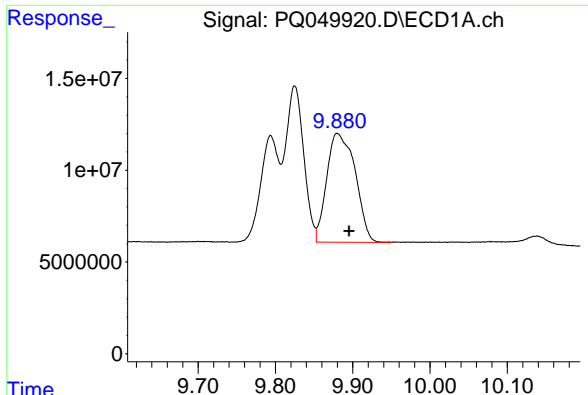
#38 AR-1262-3

R.T.: 9.794 min
 Delta R.T.: 0.000 min
 Response: 91591402
 Conc: 283.31 ng/ml



#38 AR-1262-3

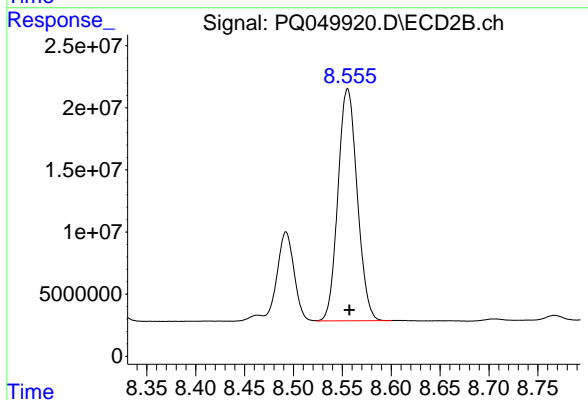
R.T.: 8.492 min
 Delta R.T.: 0.000 min
 Response: 86388424
 Conc: 303.32 ng/ml



#39 AR-1262-4

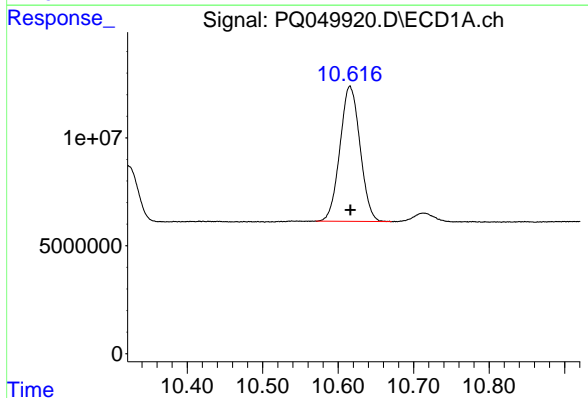
R.T.: 9.880 min
 Delta R.T.: -0.016 min
 Response: 151742564
 Conc: 387.57 ng/ml

Instrument :
 ECD_Q
 ClientSampleId :



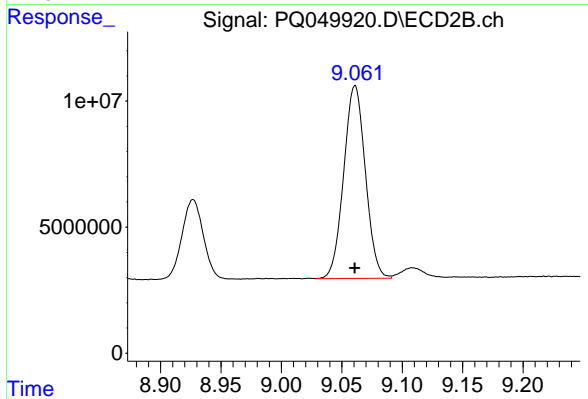
#39 AR-1262-4

R.T.: 8.555 min
 Delta R.T.: -0.002 min
 Response: 256593761
 Conc: 525.38 ng/ml



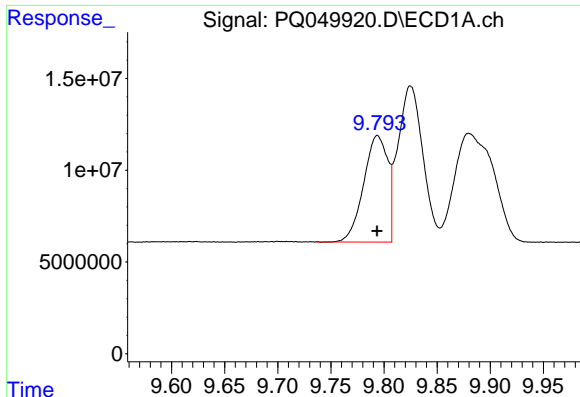
#40 AR-1262-5

R.T.: 10.616 min
 Delta R.T.: 0.000 min
 Response: 115877588
 Conc: 392.47 ng/ml



#40 AR-1262-5

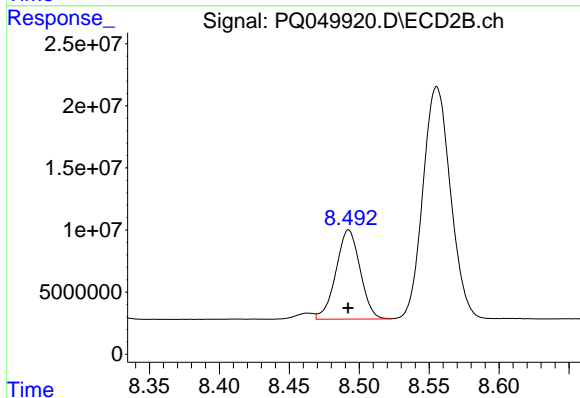
R.T.: 9.061 min
 Delta R.T.: 0.000 min
 Response: 95601758
 Conc: 394.55 ng/ml



#41 AR-1268-1

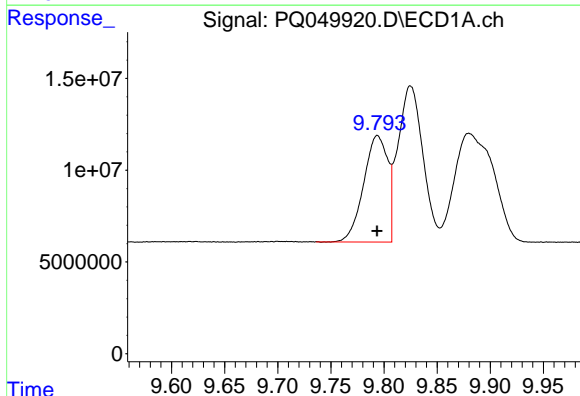
R.T.: 9.794 min
Delta R.T.: 0.000 min
Response: 91591402
Conc: 103.56 ng/ml

Instrument :
ECD_Q
ClientSampled :



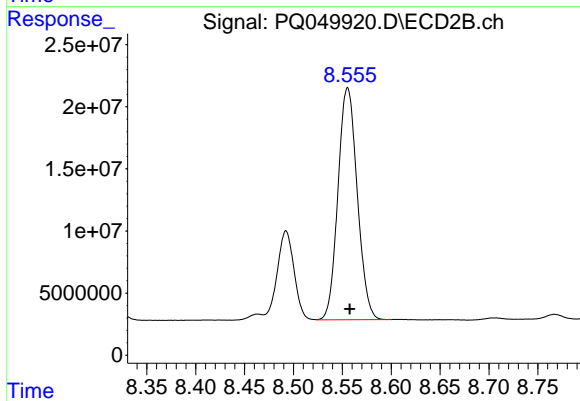
#41 AR-1268-1

R.T.: 8.492 min
Delta R.T.: 0.000 min
Response: 86388424
Conc: 95.26 ng/ml



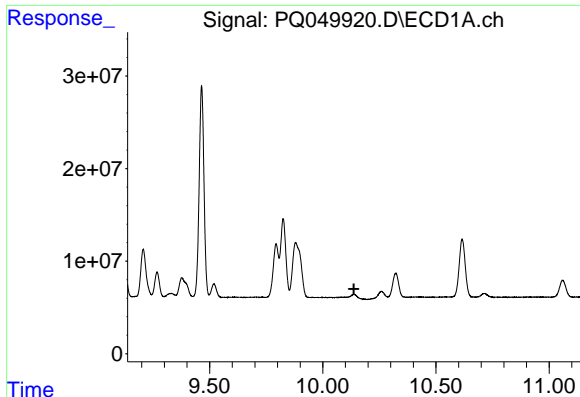
#42 AR-1268-2

R.T.: 9.794 min
Delta R.T.: 0.000 min
Response: 91591402
Conc: 103.56 ng/ml



#42 AR-1268-2

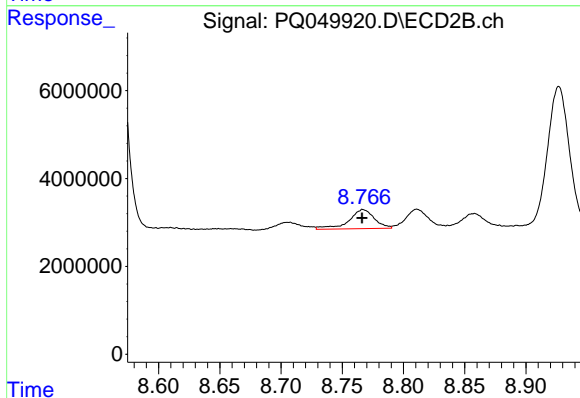
R.T.: 8.555 min
Delta R.T.: -0.002 min
Response: 256593761
Conc: 334.83 ng/ml



#43 AR-1268-3

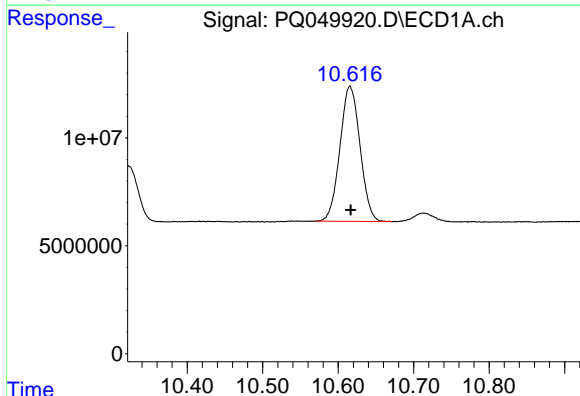
R.T.: 0.000 min
 Exp R.T.: 10.138 min
 Response: 0
 Conc: N.D.

Instrument :
 ECD_Q
 ClientSampled :



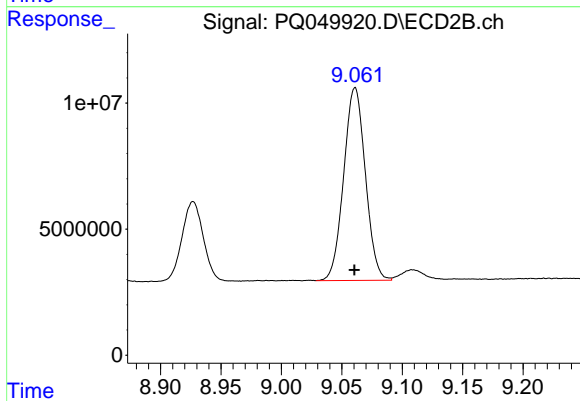
#43 AR-1268-3

R.T.: 8.767 min
 Delta R.T.: 0.000 min
 Response: 6322942
 Conc: 9.31 ng/ml



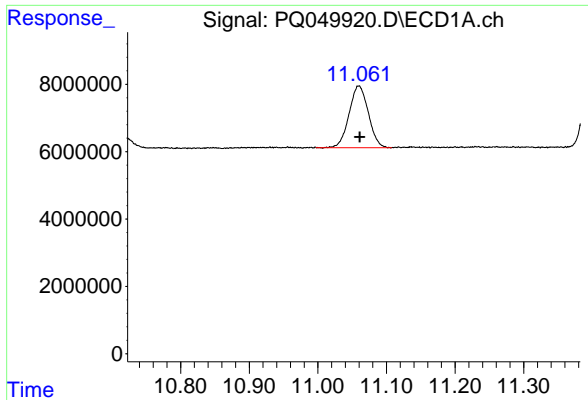
#44 AR-1268-4

R.T.: 10.616 min
 Delta R.T.: -0.001 min
 Response: 115877588
 Conc: 345.38 ng/ml



#44 AR-1268-4

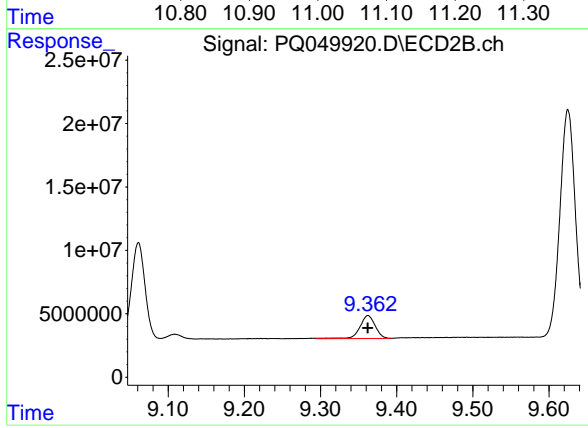
R.T.: 9.061 min
 Delta R.T.: 0.000 min
 Response: 95601758
 Conc: 345.65 ng/ml



#45 AR-1268-5

R.T.: 11.060 min
Delta R.T.: -0.001 min
Response: 35829232
Conc: 16.60 ng/ml

Instrument :
ECD_Q
ClientSampleId :



#45 AR-1268-5

R.T.: 9.362 min
Delta R.T.: 0.000 min
Response: 25305088
Conc: 14.12 ng/ml