

Data Path : Z:\pestpcbsrv\HPCHEM1\ECD_Q\Data\PQ092220\
 Data File : PQ049909.D
 Signal(s) : Signal #1: ECD1A.ch Signal #2: ECD2B.ch
 Acq On : 22 Sep 2020 12:34
 Operator : DD\AJ
 Sample : L3864-08
 Misc :
 ALS Vial : 6 Sample Multiplier: 1

Instrument :
 ECD_Q
ClientSampleId :
 CL-02-092120

Manual Integrations
APPROVED
 Ankita
 9/23/2020 11:26:38 AM

Integration File signal 1: autoint1.e
 Integration File signal 2: autoint2.e
 Quant Time: Sep 22 15:40:07 2020
 Quant Method : Z:\pestpcbsrv\HPCHEM1\ECD_Q\Method\PQ092120.M
 Quant Title : GC EXTRACTABLES
 QLast Update : Tue Sep 22 04:20:45 2020
 Response via : Initial Calibration
 Integrator: ChemStation

Volume Inj. : 2 µl
 Signal #1 Phase : ZB-MR1 Signal #2 Phase: ZB-MR2
 Signal #1 Info : 30Mx0.32mmx 0.50µ Signal #2 Info : 30M x 0.32mm x 0.25µm

Compound	RT#1	RT#2	Resp#1	Resp#2	ng/ml	ng/ml

System Monitoring Compounds						
1) SA Tetrachlo...	5.217	4.270	322.9E6	122.7E6	20.851m	20.940m
2) SA Decachlor...	11.423	9.627	147.0E6	87837094	20.845	18.329

Target Compounds

(f)=RT Delta > 1/2 Window (#)=Amounts differ by > 25% (m)=manual int.

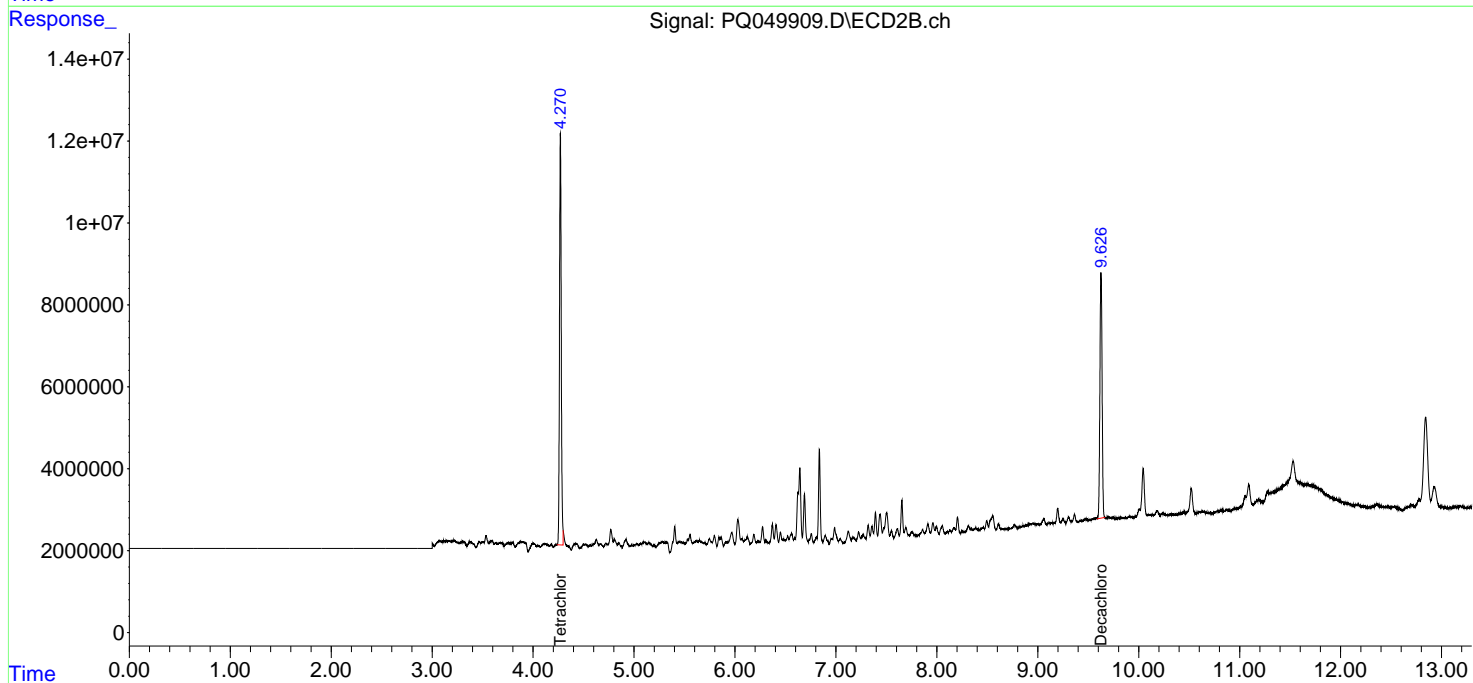
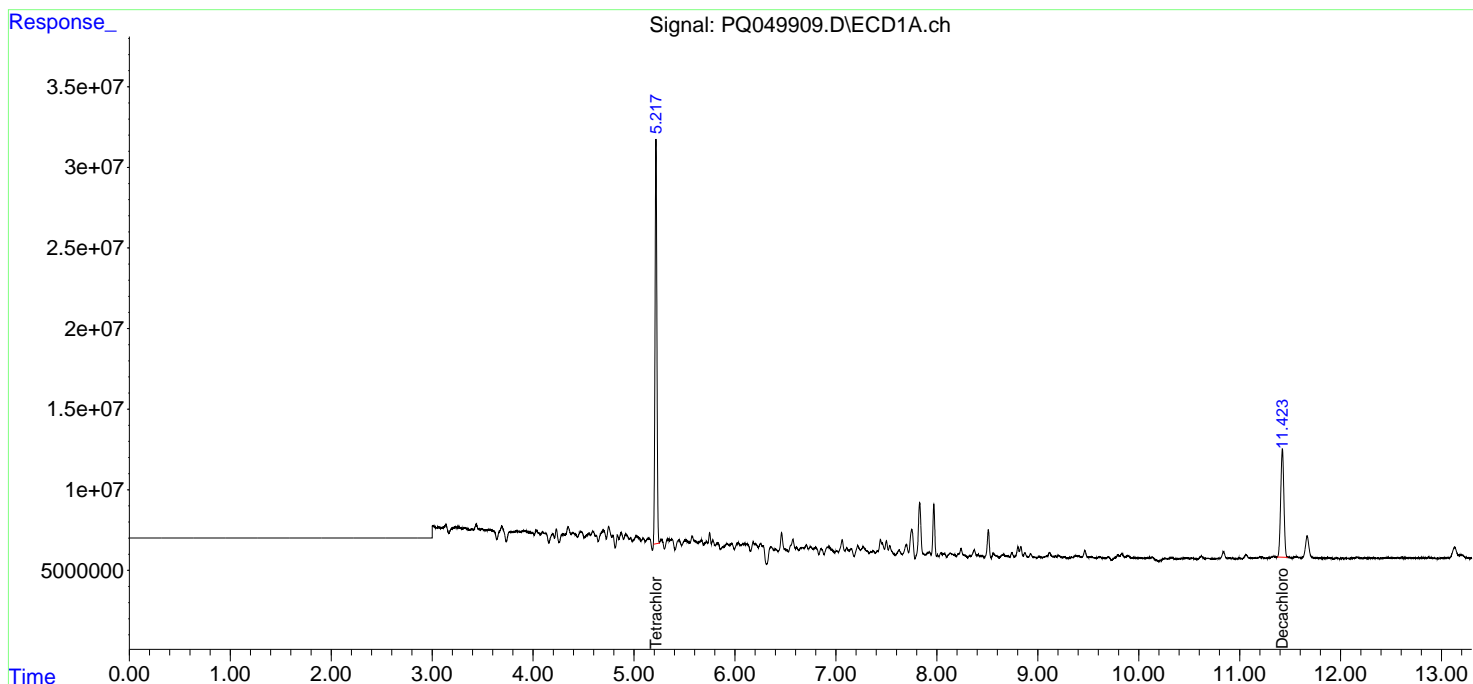
Data Path : Z:\pestpcbsrv\HPCHEM1\ECD_Q\Data\PQ092220\
 Data File : PQ049909.D
 Signal(s) : Signal #1: ECD1A.ch Signal #2: ECD2B.ch
 Acq On : 22 Sep 2020 12:34
 Operator : DD\AJ
 Sample : L3864-08
 Misc :
 ALS Vial : 6 Sample Multiplier: 1

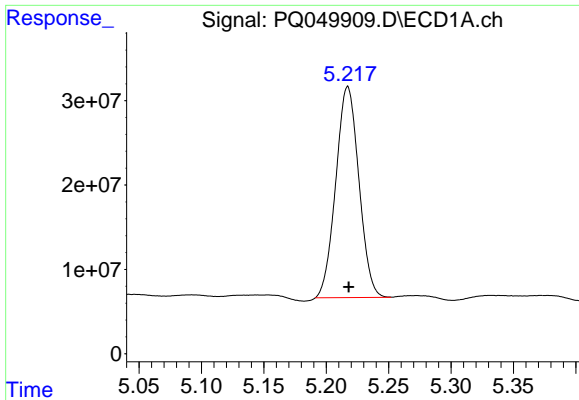
Instrument :
 ECD_Q
ClientSampled :
 CL-02-092120

Manual Integrations
APPROVED
 Ankita
 9/23/2020 11:26:38 AM

Integration File signal 1: autoint1.e
 Integration File signal 2: autoint2.e
 Quant Time: Sep 22 15:40:07 2020
 Quant Method : Z:\pestpcbsrv\HPCHEM1\ECD_Q\Method\PQ092120.M
 Quant Title : GC EXTRACTABLES
 QLast Update : Tue Sep 22 04:20:45 2020
 Response via : Initial Calibration
 Integrator: ChemStation

Volume Inj. : 2 µl
 Signal #1 Phase : ZB-MR1 Signal #2 Phase: ZB-MR2
 Signal #1 Info : 30Mx0.32mmx 0.50µ Signal #2 Info : 30M x 0.32mm x 0.25µm

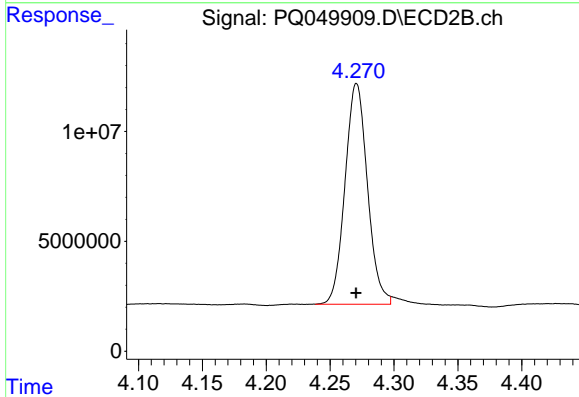




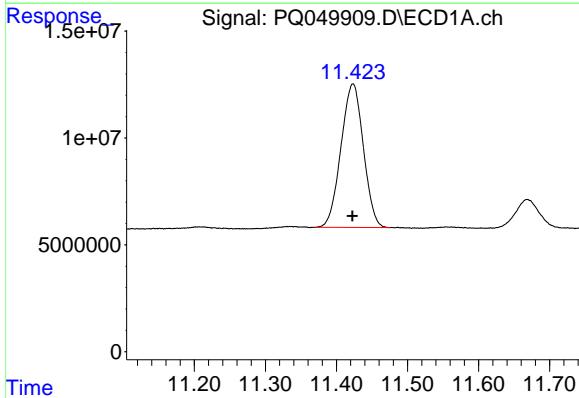
#1 Tetrachloro-m-xylene
 R.T.: 5.217 min
 Delta R.T.: 0.000 min
 Response: 322890314
 Conc: 20.85 ng/ml m

Instrument :
 ECD_Q
 ClientSampled :
 CL-02-092120

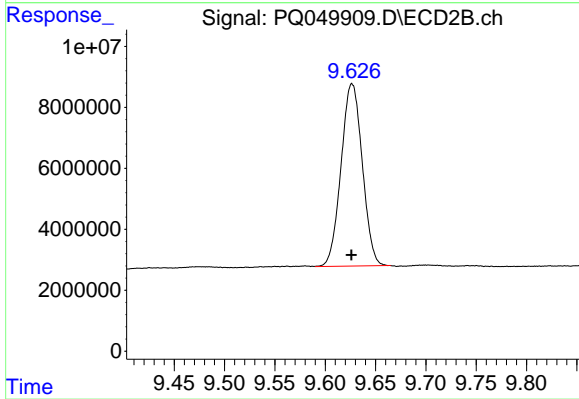
Manual Integrations
 APPROVED
 Ankita
 9/23/2020 11:26:38 AM



#1 Tetrachloro-m-xylene
 R.T.: 4.270 min
 Delta R.T.: 0.000 min
 Response: 122740295
 Conc: 20.94 ng/ml m



#2 Decachlorobiphenyl
 R.T.: 11.423 min
 Delta R.T.: 0.000 min
 Response: 146958647
 Conc: 20.85 ng/ml



#2 Decachlorobiphenyl
 R.T.: 9.627 min
 Delta R.T.: 0.000 min
 Response: 87837094
 Conc: 18.33 ng/ml