

Data Path : Z:\pestpcbsrv\HPCHEM1\ECD\_Q\Data\PQ092220\  
 Data File : PQ049913.D  
 Signal(s) : Signal #1: ECD1A.ch Signal #2: ECD2B.ch  
 Acq On : 22 Sep 2020 13:39  
 Operator : DD\AJ  
 Sample : L4099-02  
 Misc :  
 ALS Vial : 10 Sample Multiplier: 1

Instrument :  
 ECD\_Q  
 ClientSampleId :  
 029

Integration File signal 1: autoint1.e  
 Integration File signal 2: autoint2.e  
 Quant Time: Sep 22 15:42:37 2020  
 Quant Method : Z:\pestpcbsrv\HPCHEM1\ECD\_Q\Method\PQ092120.M  
 Quant Title : GC EXTRACTABLES  
 QLast Update : Tue Sep 22 04:20:45 2020  
 Response via : Initial Calibration  
 Integrator: ChemStation

Volume Inj. : 2 µl  
 Signal #1 Phase : ZB-MR1 Signal #2 Phase: ZB-MR2  
 Signal #1 Info : 30Mx0.32mmx 0.50µ Signal #2 Info : 30M x 0.32mm x 0.25µm

| Compound                    | RT#1   | RT#2  | Resp#1   | Resp#2   | ng/ml | ng/ml |
|-----------------------------|--------|-------|----------|----------|-------|-------|
| -----                       |        |       |          |          |       |       |
| System Monitoring Compounds |        |       |          |          |       |       |
| 1) SA Tetrachlo...          | 5.216  | 4.271 | 127.9E6  | 51042669 | 8.261 | 8.708 |
| 2) SA Decachlor...          | 11.421 | 9.625 | 39721448 | 23807804 | 5.634 | 4.968 |

Target Compounds

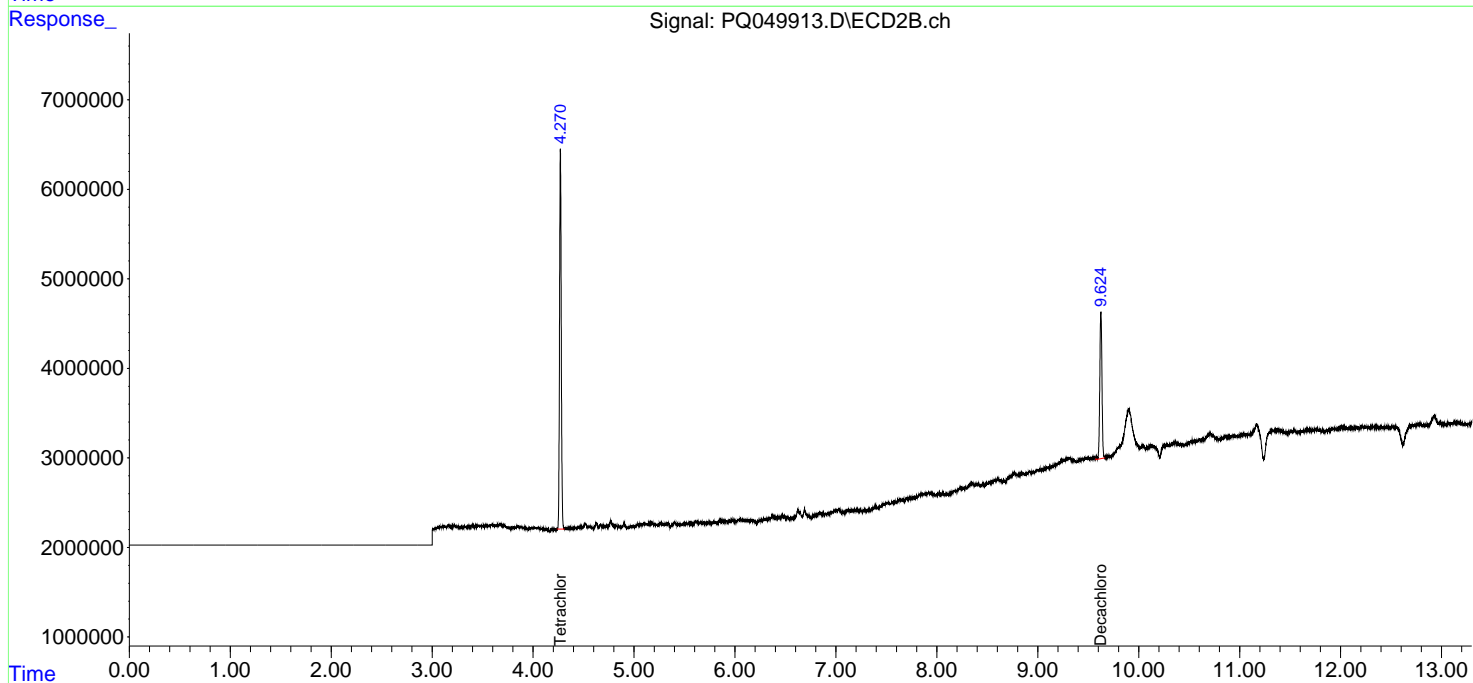
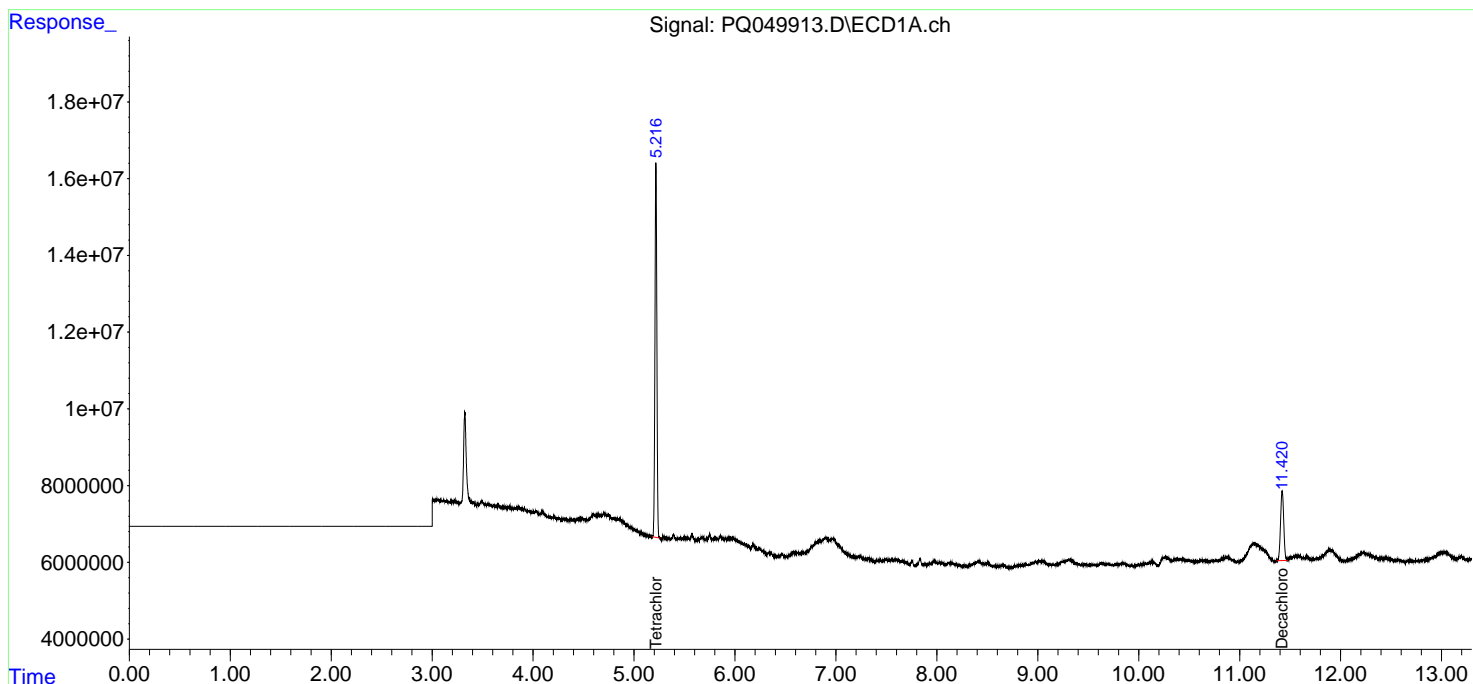
(f)=RT Delta > 1/2 Window (#)=Amounts differ by > 25% (m)=manual int.

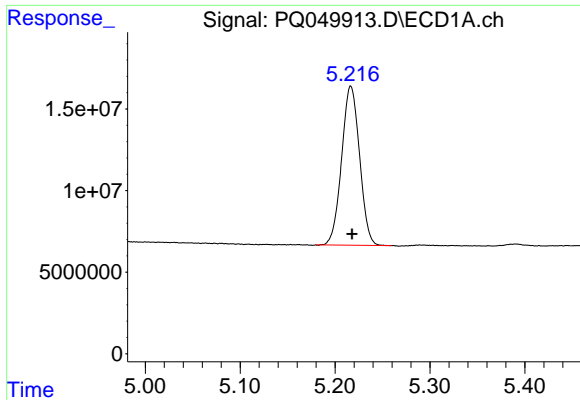
Data Path : Z:\pestpcbsrv\HPCHEM1\ECD\_Q\Data\PQ092220\  
 Data File : PQ049913.D  
 Signal(s) : Signal #1: ECD1A.ch Signal #2: ECD2B.ch  
 Acq On : 22 Sep 2020 13:39  
 Operator : DD\AJ  
 Sample : L4099-02  
 Misc :  
 ALS Vial : 10 Sample Multiplier: 1

Instrument :  
 ECD\_Q  
 ClientSampleId :  
 029

Integration File signal 1: autoint1.e  
 Integration File signal 2: autoint2.e  
 Quant Time: Sep 22 15:42:37 2020  
 Quant Method : Z:\pestpcbsrv\HPCHEM1\ECD\_Q\Method\PQ092120.M  
 Quant Title : GC EXTRACTABLES  
 QLast Update : Tue Sep 22 04:20:45 2020  
 Response via : Initial Calibration  
 Integrator: ChemStation

Volume Inj. : 2 µl  
 Signal #1 Phase : ZB-MR1 Signal #2 Phase: ZB-MR2  
 Signal #1 Info : 30Mx0.32mmx 0.50µ Signal #2 Info : 30M x 0.32mm x 0.25µm

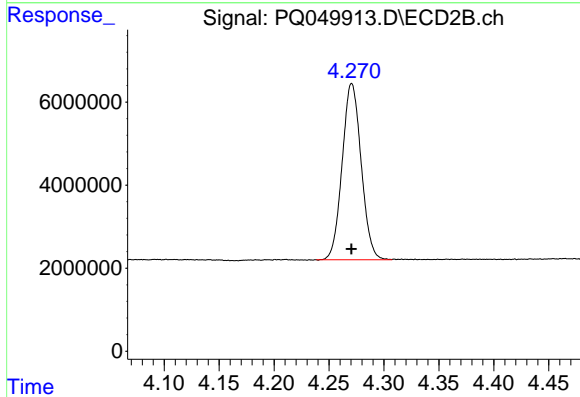




#1 Tetrachloro-m-xylene

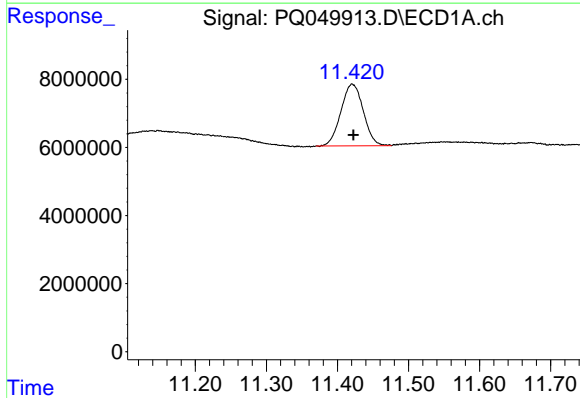
R.T.: 5.216 min  
 Delta R.T.: -0.002 min  
 Response: 127930116  
 Conc: 8.26 ng/ml

Instrument :  
 ECD\_Q  
 ClientSampleId :  
 029



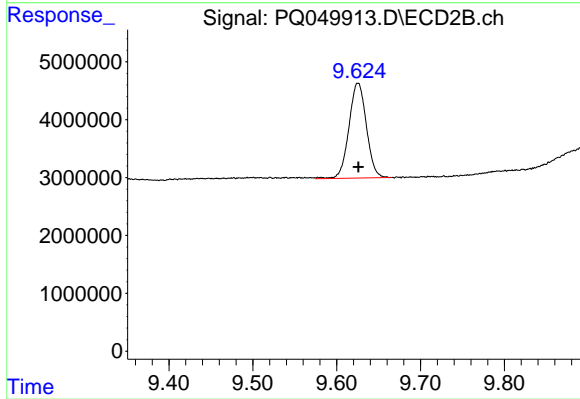
#1 Tetrachloro-m-xylene

R.T.: 4.271 min  
 Delta R.T.: 0.000 min  
 Response: 51042669  
 Conc: 8.71 ng/ml



#2 Decachlorobiphenyl

R.T.: 11.421 min  
 Delta R.T.: -0.002 min  
 Response: 39721448  
 Conc: 5.63 ng/ml



#2 Decachlorobiphenyl

R.T.: 9.625 min  
 Delta R.T.: 0.000 min  
 Response: 23807804  
 Conc: 4.97 ng/ml