

Data Path : Z:\pestpcbsrv\HPCHEM1\ECD_Q\Data\PQ092220\
 Data File : PQ049918.D
 Signal(s) : Signal #1: ECD1A.ch Signal #2: ECD2B.ch
 Acq On : 22 Sep 2020 15:00
 Operator : DD\AJ
 Sample : L4102-04
 Misc :
 ALS Vial : 15 Sample Multiplier: 1

Instrument :
 ECD_Q
ClientSampled :
 T-1

Manual Integrations
APPROVED
 Ankita
 9/23/2020 11:26:44 AM

Integration File signal 1: autoint1.e
 Integration File signal 2: autoint2.e
 Quant Time: Sep 22 15:45:22 2020
 Quant Method : Z:\pestpcbsrv\HPCHEM1\ECD_Q\Method\PQ092120.M
 Quant Title : GC EXTRACTABLES
 QLast Update : Tue Sep 22 04:20:45 2020
 Response via : Initial Calibration
 Integrator: ChemStation

Volume Inj. : 2 µl
 Signal #1 Phase : ZB-MR1 Signal #2 Phase: ZB-MR2
 Signal #1 Info : 30Mx0.32mmx 0.50µ Signal #2 Info : 30M x 0.32mm x 0.25µm

Compound	RT#1	RT#2	Resp#1	Resp#2	ng/ml	ng/ml

System Monitoring Compounds						
1) SA Tetrachlo...	5.243f	4.314f	218.9E6	91410426	14.135m	15.595m
2) SA Decachlor...	11.423	9.628	149.9E6	93716373	21.265	19.556

Target Compounds

(f)=RT Delta > 1/2 Window (#)=Amounts differ by > 25% (m)=manual int.

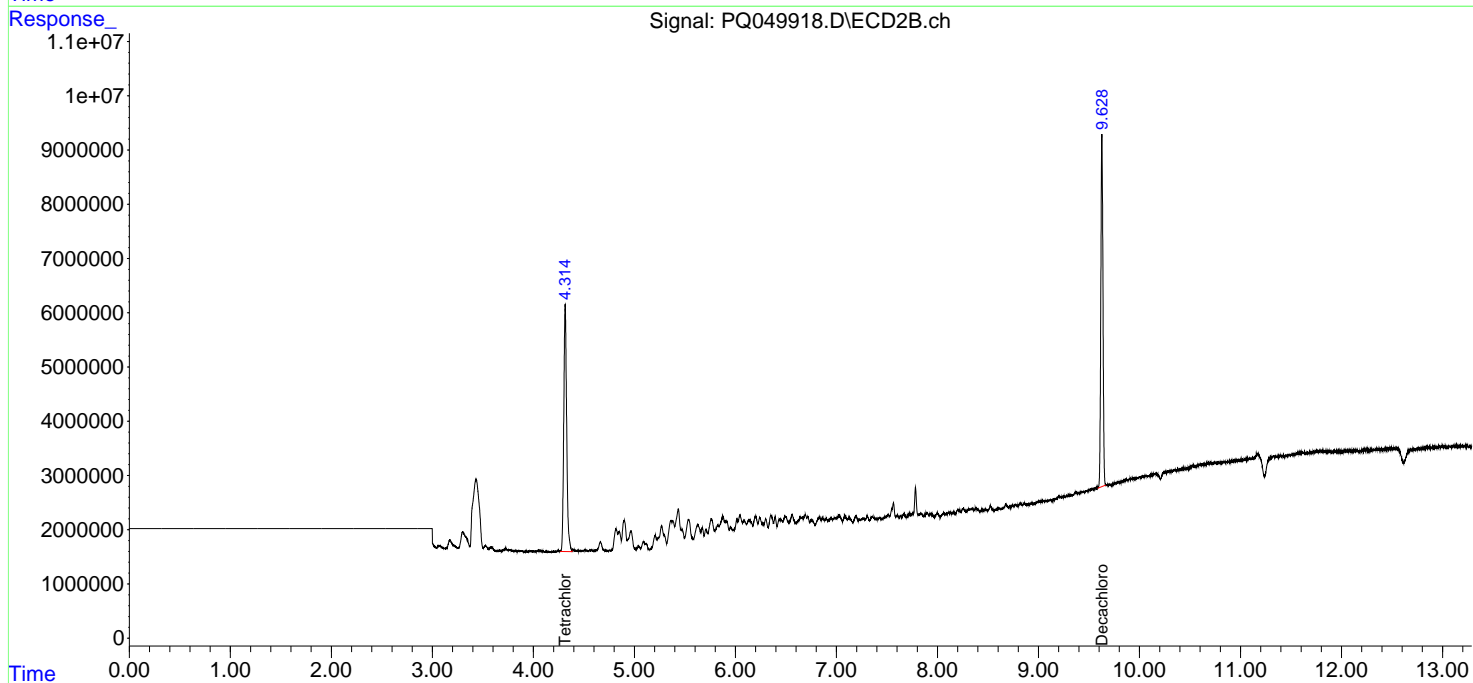
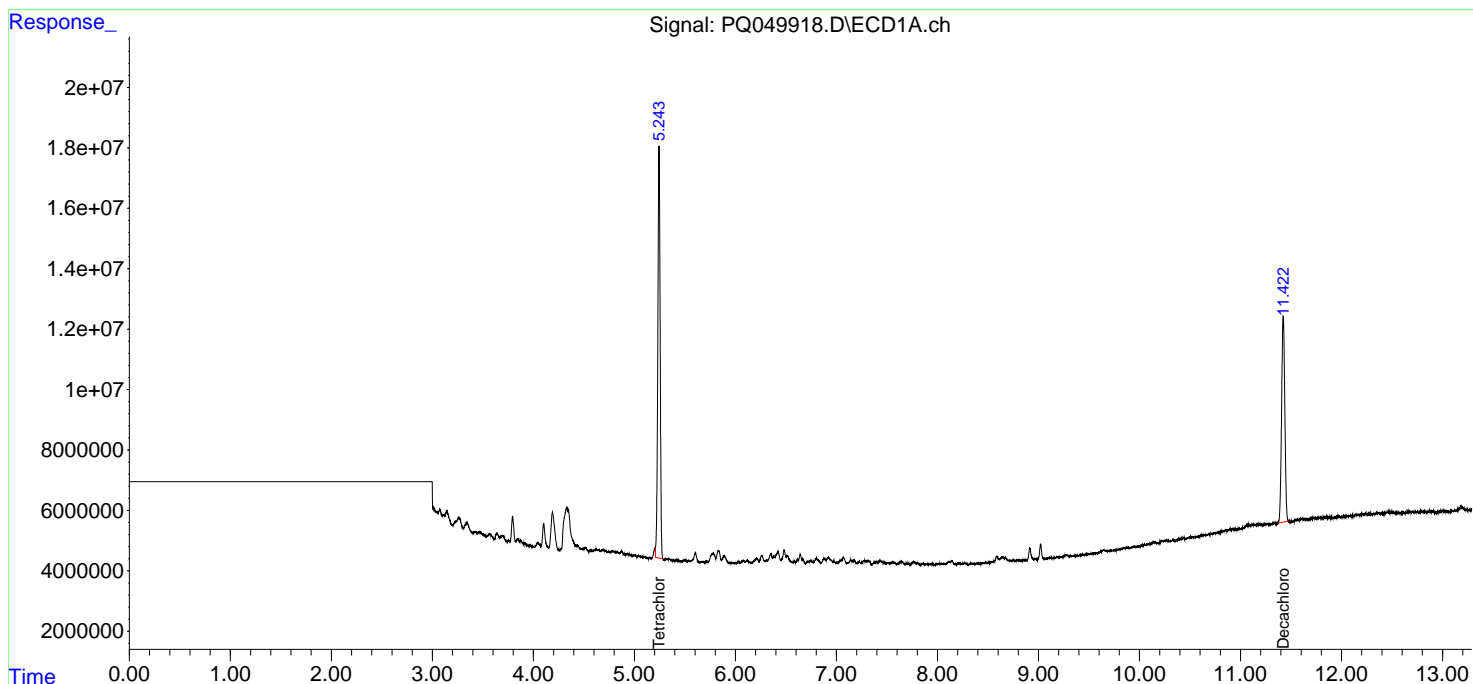
Data Path : Z:\pestpcbsrv\HPCHEM1\ECD_Q\Data\PQ092220\
 Data File : PQ049918.D
 Signal(s) : Signal #1: ECD1A.ch Signal #2: ECD2B.ch
 Acq On : 22 Sep 2020 15:00
 Operator : DD\AJ
 Sample : L4102-04
 Misc :
 ALS Vial : 15 Sample Multiplier: 1

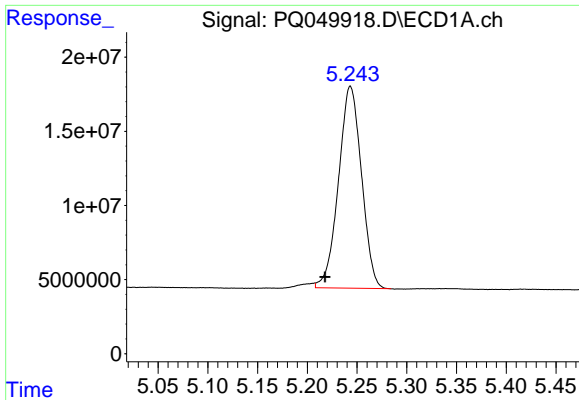
Instrument :
 ECD_Q
 ClientSampled :
 T-1

Manual Integrations
APPROVED
 Ankita
 9/23/2020 11:26:44 AM

Integration File signal 1: autoint1.e
 Integration File signal 2: autoint2.e
 Quant Time: Sep 22 15:45:22 2020
 Quant Method : Z:\pestpcbsrv\HPCHEM1\ECD_Q\Method\PQ092120.M
 Quant Title : GC EXTRACTABLES
 QLast Update : Tue Sep 22 04:20:45 2020
 Response via : Initial Calibration
 Integrator: ChemStation

Volume Inj. : 2 µl
 Signal #1 Phase : ZB-MR1 Signal #2 Phase: ZB-MR2
 Signal #1 Info : 30Mx0.32mmx 0.50µ Signal #2 Info : 30M x 0.32mm x 0.25µm





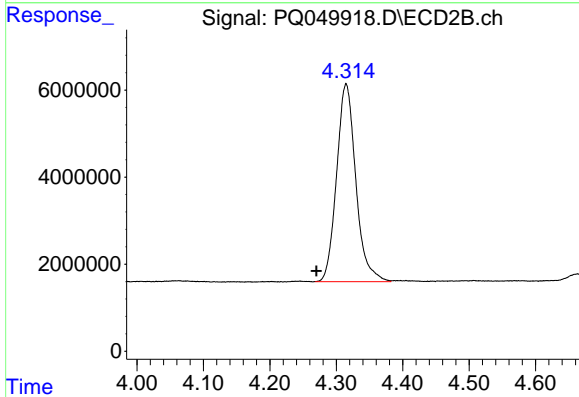
#1 Tetrachloro-m-xylene

R.T.: 5.243 min
 Delta R.T.: 0.025 min
 Response: 218892556
 Conc: 14.13 ng/ml m

Instrument :
 ECD_Q
 ClientSampled :
 T-1

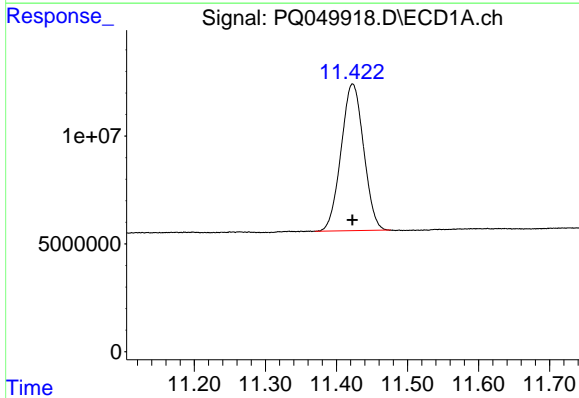
Manual Integrations
 APPROVED

Ankita
 9/23/2020 11:26:44 AM



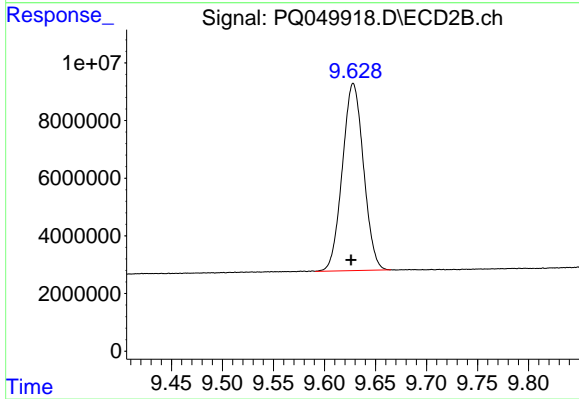
#1 Tetrachloro-m-xylene

R.T.: 4.314 min
 Delta R.T.: 0.044 min
 Response: 91410426
 Conc: 15.59 ng/ml m



#2 Decachlorobiphenyl

R.T.: 11.423 min
 Delta R.T.: 0.000 min
 Response: 149918227
 Conc: 21.27 ng/ml



#2 Decachlorobiphenyl

R.T.: 9.628 min
 Delta R.T.: 0.002 min
 Response: 93716373
 Conc: 19.56 ng/ml