

Data Path : Z:\pestpcbsrv\HPCHEM1\ECD_Q\Data\PQ092320\
 Data File : PQ049964.D
 Signal(s) : Signal #1: ECD1A.ch Signal #2: ECD2B.ch
 Acq On : 23 Sep 2020 11:35
 Operator : DD\AJ
 Sample : L4102-04
 Misc :
 ALS Vial : 7 Sample Multiplier: 1

Instrument :
 ECD_Q
ClientSampled :
 T-1

Manual Integrations
APPROVED
 Ankita
 9/25/2020 8:18:05 AM

Integration File signal 1: autoint1.e
 Integration File signal 2: autoint2.e
 Quant Time: Sep 23 14:44:03 2020
 Quant Method : Z:\pestpcbsrv\HPCHEM1\ECD_Q\Method\PQ092120.M
 Quant Title : GC EXTRACTABLES
 QLast Update : Tue Sep 22 04:20:45 2020
 Response via : Initial Calibration
 Integrator: ChemStation

Volume Inj. : 2 µl
 Signal #1 Phase : ZB-MR1 Signal #2 Phase: ZB-MR2
 Signal #1 Info : 30Mx0.32mmx 0.50µ Signal #2 Info : 30M x 0.32mm x 0.25µm

Compound	RT#1	RT#2	Resp#1	Resp#2	ng/ml	ng/ml

System Monitoring Compounds						
1) SA Tetrachlo...	5.240f	4.313f	224.4E6	89489443	14.490m	15.267m
2) SA Decachlor...	11.422	9.628	164.2E6	102.6E6	23.287	21.409

Target Compounds

(f)=RT Delta > 1/2 Window (#)=Amounts differ by > 25% (m)=manual int.

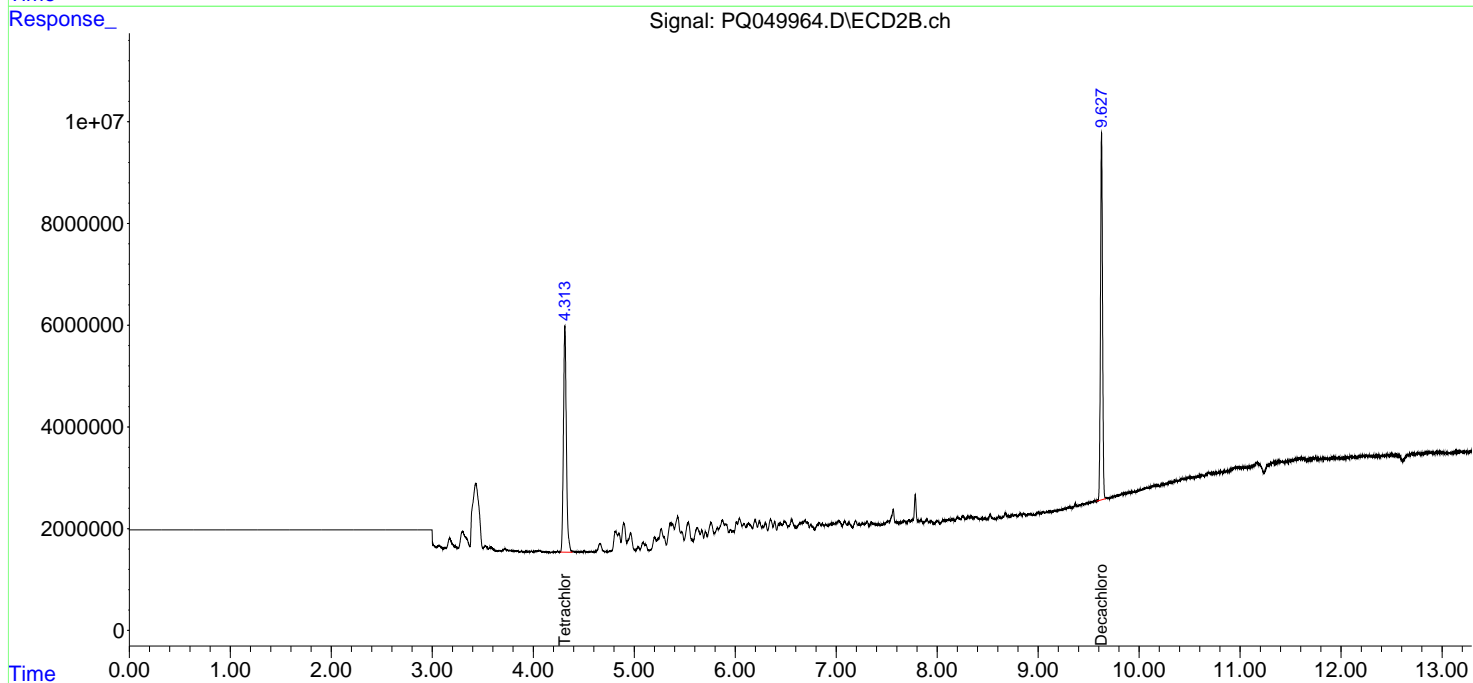
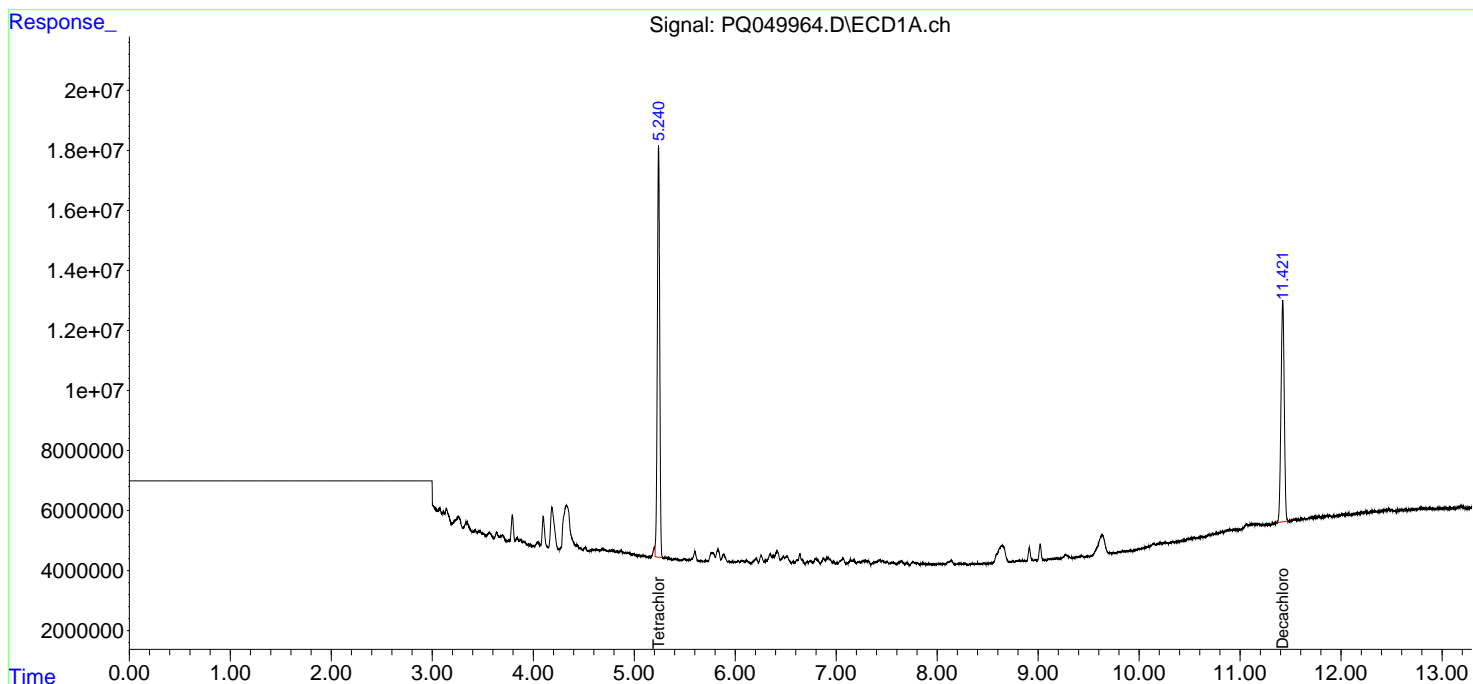
Data Path : Z:\pestpcbsrv\HPCHEM1\ECD_Q\Data\PQ092320\
 Data File : PQ049964.D
 Signal(s) : Signal #1: ECD1A.ch Signal #2: ECD2B.ch
 Acq On : 23 Sep 2020 11:35
 Operator : DD\AJ
 Sample : L4102-04
 Misc :
 ALS Vial : 7 Sample Multiplier: 1

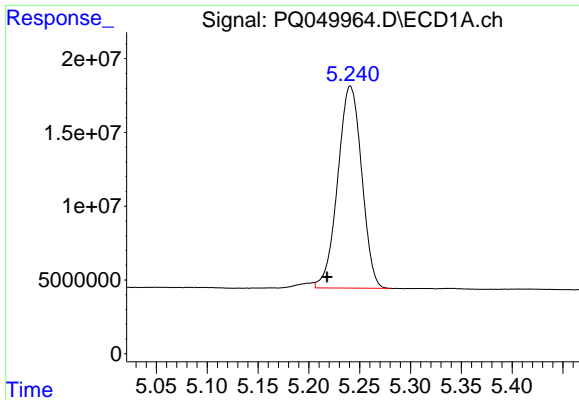
Instrument :
 ECD_Q
 ClientSampled :
 T-1

Manual Integrations
APPROVED
 Ankita
 9/25/2020 8:18:05 AM

Integration File signal 1: autoint1.e
 Integration File signal 2: autoint2.e
 Quant Time: Sep 23 14:44:03 2020
 Quant Method : Z:\pestpcbsrv\HPCHEM1\ECD_Q\Method\PQ092120.M
 Quant Title : GC EXTRACTABLES
 QLast Update : Tue Sep 22 04:20:45 2020
 Response via : Initial Calibration
 Integrator: ChemStation

Volume Inj. : 2 µl
 Signal #1 Phase : ZB-MR1 Signal #2 Phase: ZB-MR2
 Signal #1 Info : 30Mx0.32mmx 0.50µ Signal #2 Info : 30M x 0.32mm x 0.25µm





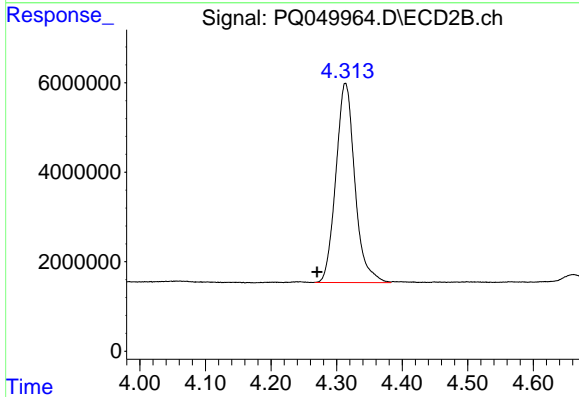
#1 Tetrachloro-m-xylene

R.T.: 5.240 min
 Delta R.T.: 0.022 min
 Response: 224395348
 Conc: 14.49 ng/ml m

Instrument :
 ECD_Q
 ClientSampled :
 T-1

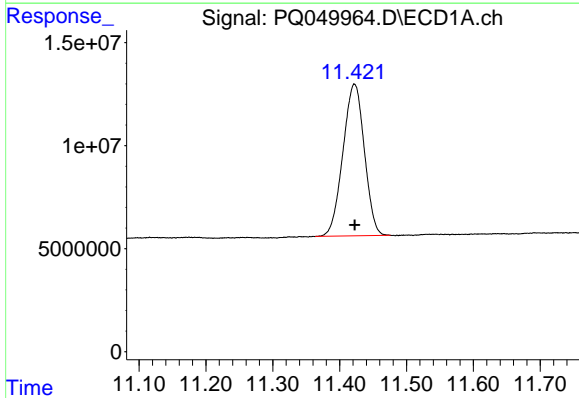
Manual Integrations
 APPROVED

Ankita
 9/25/2020 8:18:05 AM



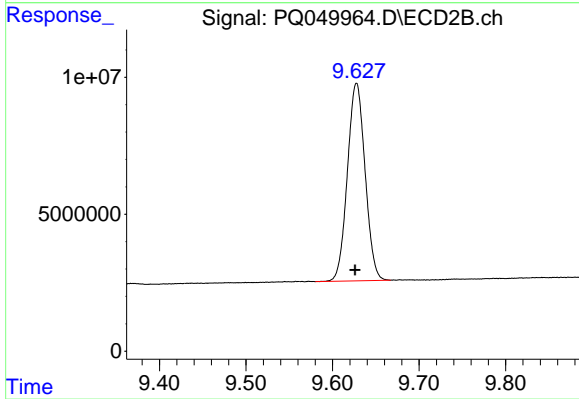
#1 Tetrachloro-m-xylene

R.T.: 4.313 min
 Delta R.T.: 0.042 min
 Response: 89489443
 Conc: 15.27 ng/ml m



#2 Decachlorobiphenyl

R.T.: 11.422 min
 Delta R.T.: 0.000 min
 Response: 164173040
 Conc: 23.29 ng/ml



#2 Decachlorobiphenyl

R.T.: 9.628 min
 Delta R.T.: 0.002 min
 Response: 102593104
 Conc: 21.41 ng/ml