

Data Path : Z:\pestpcbsrv\HPCHEM1\ECD_Q\Data\PQ092424\
 Data File : PQ068752.D
 Signal(s) : Signal #1: ECD1A.ch Signal #2: ECD2B.ch
 Acq On : 25 Sep 2024 00:11
 Operator : YP\AJ
 Sample : AR1660CCC500
 Misc :
 ALS Vial : 3 Sample Multiplier: 1

Instrument :
 ECD_Q
 ClientSampleId :
 AR1660CCC500

Integration File signal 1: autoint1.e
 Integration File signal 2: autoint2.e
 Quant Time: Sep 25 04:49:48 2024
 Quant Method : Z:\pestpcbsrv\HPCHEM1\ECD_Q\Method\PQ090624.M
 Quant Title : GC EXTRACTABLES
 QLast Update : Tue Sep 10 13:06:53 2024
 Response via : Initial Calibration
 Integrator: ChemStation

Volume Inj. : 2 µl
 Signal #1 Phase : ZB-MR1 Signal #2 Phase: ZB-MR2
 Signal #1 Info : 30Mx0.32mmx 0.50µ Signal #2 Info : 30M x 0.32mm x 0.25µm

Compound	RT#1	RT#2	Resp#1	Resp#2	ng/ml	ng/ml
System Monitoring Compounds						
1) SA Tetrachlo...	3.436	2.818	341.7E6	360.7E6	47.856	50.643
2) SA Decachlor...	8.609	7.593	195.1E6	310.8E6	44.765	47.070
Target Compounds						
3) L1 AR-1016-1	4.536	3.822	111.1E6	118.6E6	475.408	499.229
4) L1 AR-1016-2	4.556	3.838	169.0E6	181.2E6	460.373	501.339
5) L1 AR-1016-3	4.613	3.999	105.6E6	97810082	467.062	503.571
6) L1 AR-1016-4	4.706	4.048	87573906	83337465	459.962	516.031
7) L1 AR-1016-5	4.992	4.244	82388190	97183524	465.980	503.150
8) L2 AR-1221-1	3.633	3.017	12562355	12828622	155.725	144.385
9) L2 AR-1221-2	3.715	3.094	18464014	18840397	306.417	274.836
10) L2 AR-1221-3	3.785	3.163	63622510	68615210	350.676	347.159
11) L3 AR-1232-1	3.785	3.163	63622510	68615210	396.380	421.906
12) L3 AR-1232-2	4.278	3.838	87023595	181.2E6	986.540	1151.371
13) L3 AR-1232-3	4.556	3.999	169.0E6	97810082	1049.511	1175.877
14) L3 AR-1232-4	4.706	4.085	87573906	90854152	1094.233	1286.996
15) L3 AR-1232-5	4.802	4.244	66434859	97183524	1232.653	1229.740
16) L4 AR-1242-1	4.536	3.822	111.1E6	118.6E6	614.836	649.022
17) L4 AR-1242-2	4.556	3.838	169.0E6	181.2E6	607.203	669.878
18) L4 AR-1242-3	4.613	3.999	105.6E6	97810082	614.101	664.619
19) L4 AR-1242-4	4.706	4.085	87573906	90854152	617.157	651.270
20) L4 AR-1242-5	5.421	4.581	11338511	80870762	78.674	430.396 #
21) L5 AR-1248-1	4.536	3.822	111.1E6	118.6E6	792.651	829.958
22) L5 AR-1248-2	4.802	4.048	66434859	83337465	341.130	387.044
23) L5 AR-1248-3	4.992	4.085	82388190	90854152	351.106	437.677
24) L5 AR-1248-4	5.385	4.244	13448318	97183524	52.084	380.272 #
25) L5 AR-1248-5	5.421	4.620	11338511	13258468	44.772	51.921
26) L6 AR-1254-1	5.358	4.581	63135394	80870762	246.448	217.249
27) L6 AR-1254-2	5.575	4.728	68746420	78156560	175.704	234.369 #
28) L6 AR-1254-3	5.928	5.111	37327411	39854615	91.788	77.575
29) L6 AR-1254-4	6.210	5.337	22105621	15332598	76.748	48.797 #
30) L6 AR-1254-5	6.624	5.742	198.3E6	280.6E6	606.620	587.593
31) L7 AR-1260-1	6.093	5.239	144.7E6	191.2E6	435.158	498.034
32) L7 AR-1260-2	6.352	5.429	165.9E6	230.3E6	442.661	505.320
33) L7 AR-1260-3	6.705	5.571	105.2E6	220.0E6	447.433	504.708
34) L7 AR-1260-4	6.922	6.033	125.4E6	161.6E6	452.381	503.100
35) L7 AR-1260-5	7.233	6.279	230.0E6	358.8E6	430.260	492.341
36) L8 AR-1262-1	6.922	5.785	125.4E6	165.8E6	354.516	341.671
37) L8 AR-1262-2	7.233	6.033	230.0E6	161.6E6	352.139	362.933
38) L8 AR-1262-3	7.511	6.556	146.0E6	75784143	339.659	213.975 #
39) L8 AR-1262-4	7.580	6.614	35224651	269.1E6	105.626	406.368 #
40) L8 AR-1262-5	8.085	7.109	50555883	85329050	240.001	278.883
41) L9 AR-1268-1	7.511	6.556	146.0E6	75784143	202.302	74.483 #

Data Path : Z:\pestpcbsrv\HPCHEM1\ECD_Q\Data\PQ092424\
 Data File : PQ068752.D
 Signal(s) : Signal #1: ECD1A.ch Signal #2: ECD2B.ch
 Acq On : 25 Sep 2024 00:11
 Operator : YP\AJ
 Sample : AR1660CCC500
 Misc :
 ALS Vial : 3 Sample Multiplier: 1

Instrument :
 ECD_Q
ClientSampleId :
 AR1660CCC500

Integration File signal 1: autoint1.e
 Integration File signal 2: autoint2.e
 Quant Time: Sep 25 04:49:48 2024
 Quant Method : Z:\pestpcbsrv\HPCHEM1\ECD_Q\Method\PQ090624.M
 Quant Title : GC EXTRACTABLES
 QLast Update : Tue Sep 10 13:06:53 2024
 Response via : Initial Calibration
 Integrator: ChemStation

Volume Inj. : 2 µl
 Signal #1 Phase : ZB-MR1 Signal #2 Phase: ZB-MR2
 Signal #1 Info : 30Mx0.32mmx 0.50µ Signal #2 Info : 30M x 0.32mm x 0.25µm

	Compound	RT#1	RT#2	Resp#1	Resp#2	ng/ml	ng/ml
42)	L9 AR-1268-2	7.580	6.614	35224651	269.1E6	53.373	296.549 #
43)	L9 AR-1268-3	7.763	6.819	4088804	7624624	7.546	9.598 #
44)	L9 AR-1268-4	8.085	7.109	50555883	85329050	234.549	269.681
45)	L9 AR-1268-5	8.377	7.377	17304400	30398506	10.939	12.856

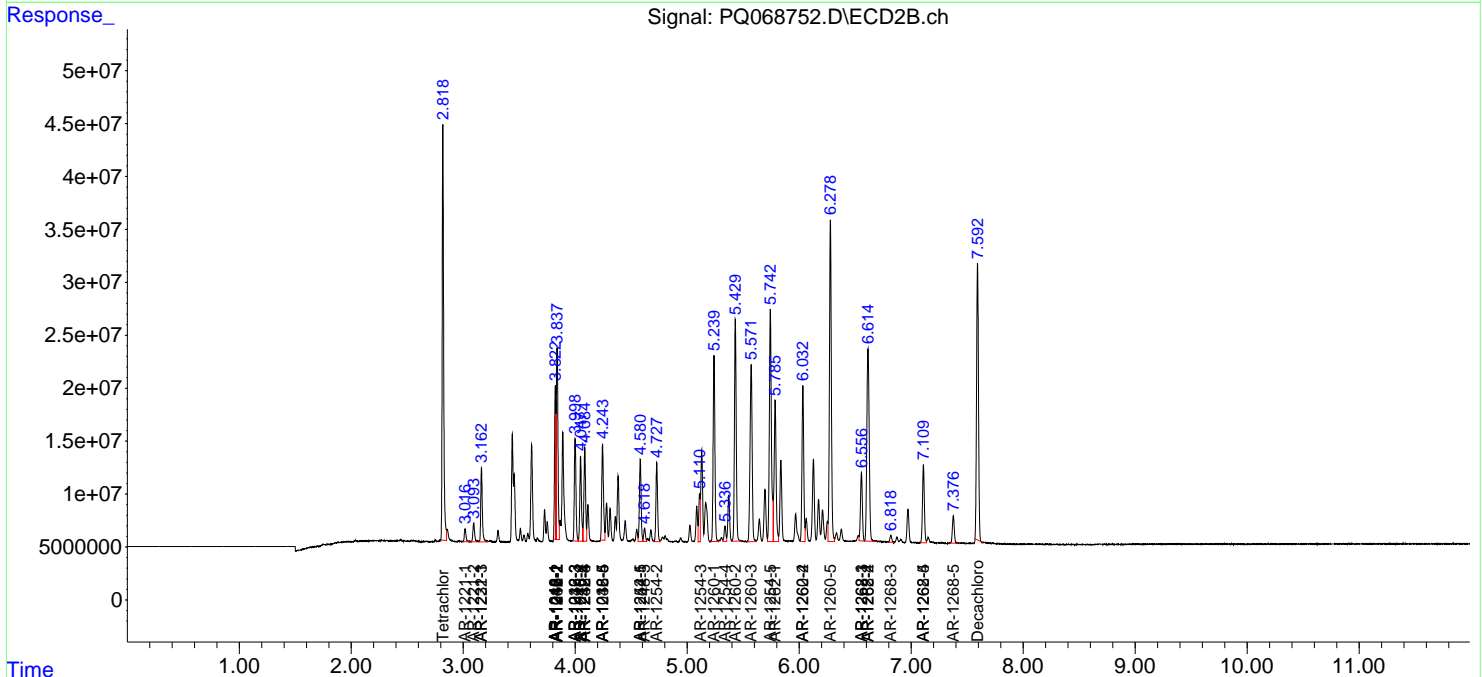
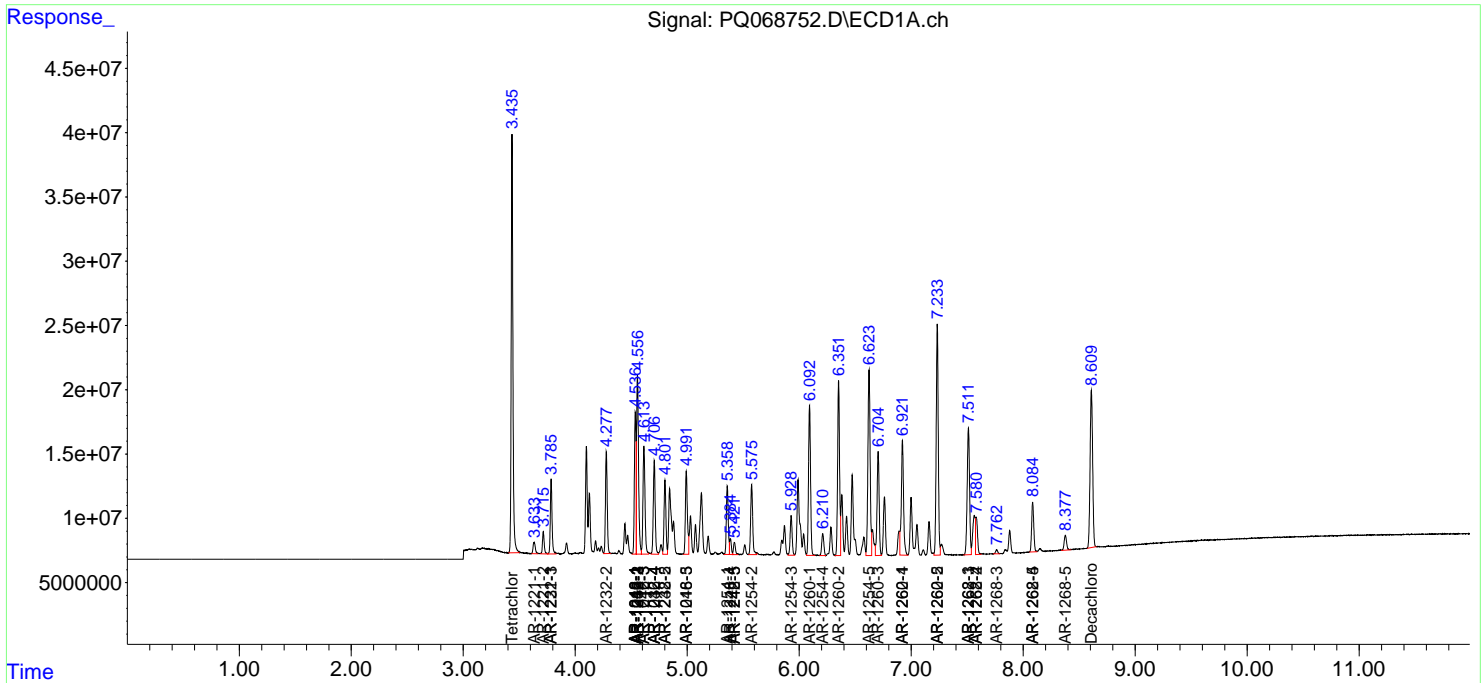
(f)=RT Delta > 1/2 Window (#)=Amounts differ by > 25% (m)=manual int.

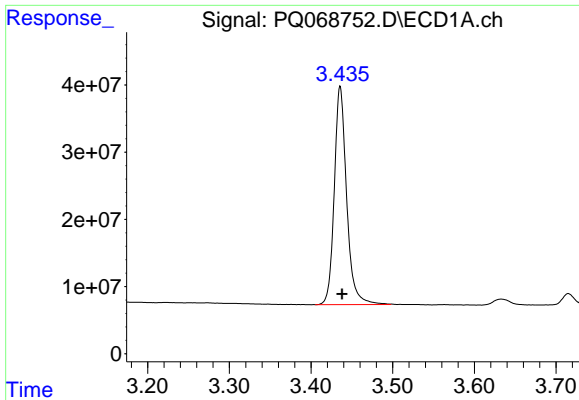
Data Path : Z:\pestpcbsrv\HPCHEM1\ECD_Q\Data\PQ092424\
 Data File : PQ068752.D
 Signal(s) : Signal #1: ECD1A.ch Signal #2: ECD2B.ch
 Acq On : 25 Sep 2024 00:11
 Operator : YP\AJ
 Sample : AR1660CCC500
 Misc :
 ALS Vial : 3 Sample Multiplier: 1

Instrument :
 ECD_Q
ClientSampleId :
 AR1660CCC500

Integration File signal 1: autoint1.e
 Integration File signal 2: autoint2.e
 Quant Time: Sep 25 04:49:48 2024
 Quant Method : Z:\pestpcbsrv\HPCHEM1\ECD_Q\Method\PQ090624.M
 Quant Title : GC EXTRACTABLES
 QLast Update : Tue Sep 10 13:06:53 2024
 Response via : Initial Calibration
 Integrator: ChemStation

Volume Inj. : 2 µl
 Signal #1 Phase : ZB-MR1 Signal #2 Phase: ZB-MR2
 Signal #1 Info : 30Mx0.32mmx 0.50µ Signal #2 Info : 30M x 0.32mm x 0.25µm

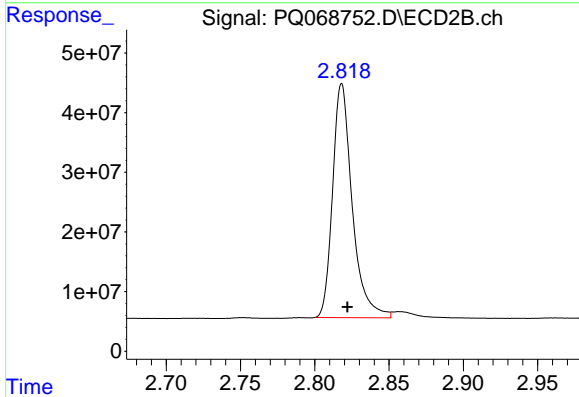




#1 Tetrachloro-m-xylene

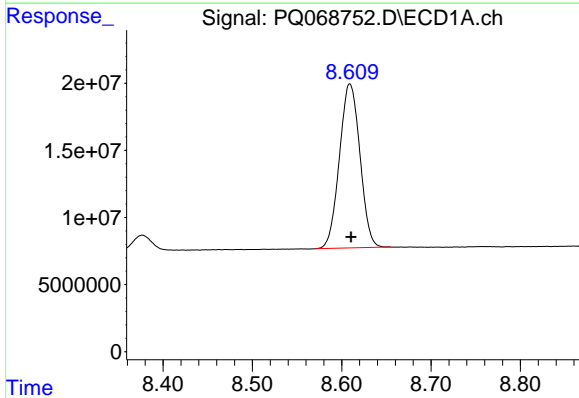
R.T.: 3.436 min
 Delta R.T.: -0.002 min
 Response: 341723569
 Conc: 47.86 ng/ml

Instrument :
 ECD_Q
 ClientSampleId :
 AR1660CCC500



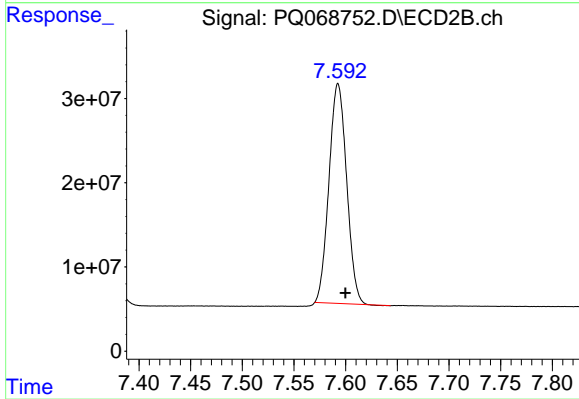
#1 Tetrachloro-m-xylene

R.T.: 2.818 min
 Delta R.T.: -0.004 min
 Response: 360698125
 Conc: 50.64 ng/ml



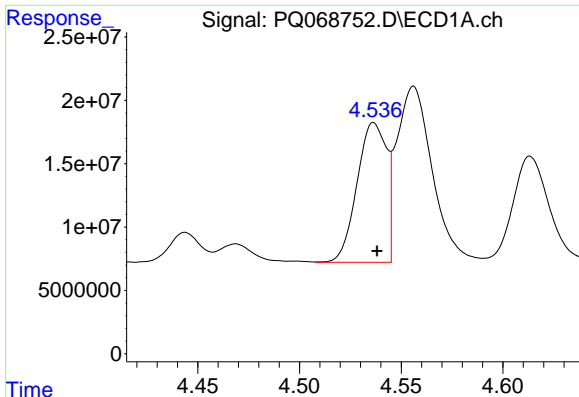
#2 Decachlorobiphenyl

R.T.: 8.609 min
 Delta R.T.: -0.001 min
 Response: 195095692
 Conc: 44.76 ng/ml



#2 Decachlorobiphenyl

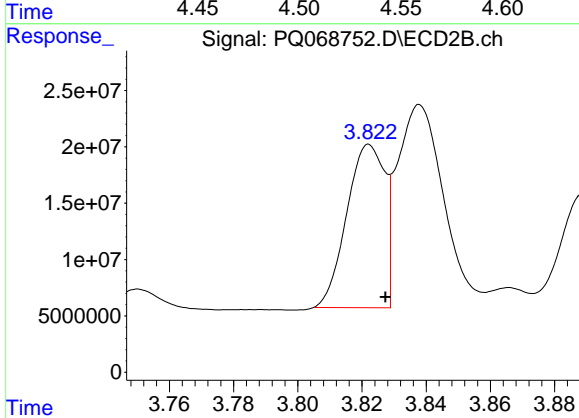
R.T.: 7.593 min
 Delta R.T.: -0.007 min
 Response: 310842567
 Conc: 47.07 ng/ml



#3 AR-1016-1

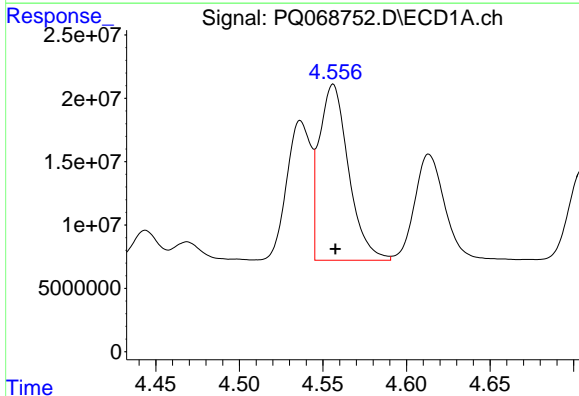
R.T.: 4.536 min
 Delta R.T.: -0.002 min
 Response: 111086181
 Conc: 475.41 ng/ml

Instrument :
 ECD_Q
 ClientSampleId :
 AR1660CCC500



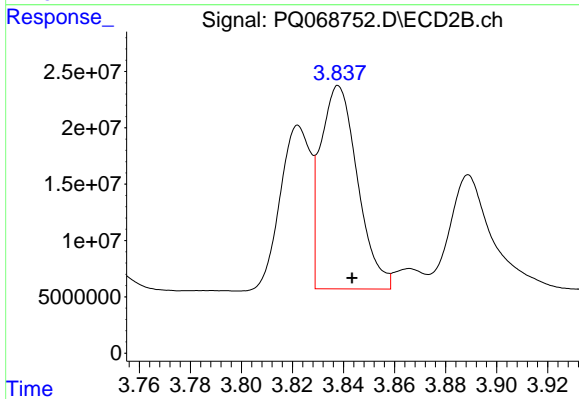
#3 AR-1016-1

R.T.: 3.822 min
 Delta R.T.: -0.005 min
 Response: 118551889
 Conc: 499.23 ng/ml



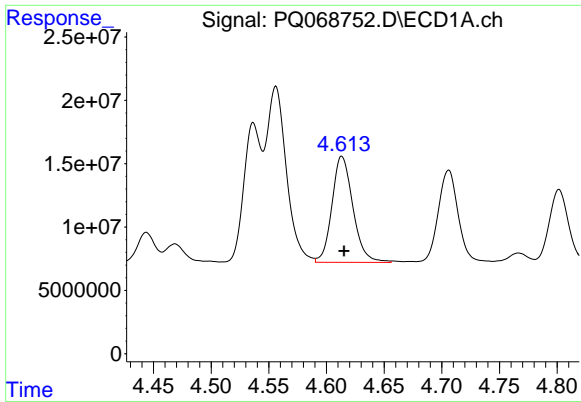
#4 AR-1016-2

R.T.: 4.556 min
 Delta R.T.: -0.001 min
 Response: 169029102
 Conc: 460.37 ng/ml



#4 AR-1016-2

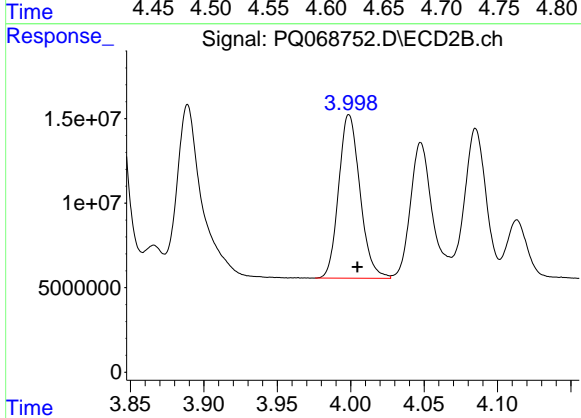
R.T.: 3.838 min
 Delta R.T.: -0.005 min
 Response: 181160125
 Conc: 501.34 ng/ml



#5 AR-1016-3

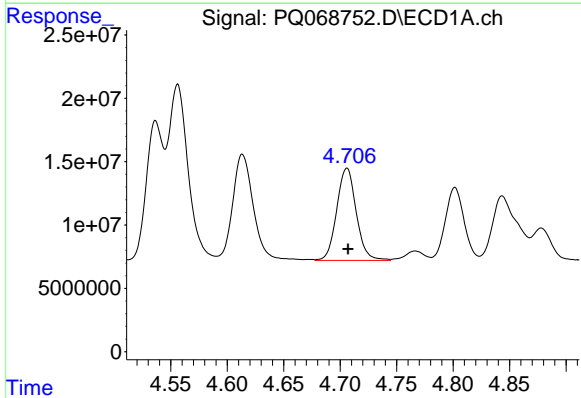
R.T.: 4.613 min
 Delta R.T.: -0.002 min
 Response: 105572100
 Conc: 467.06 ng/ml

Instrument :
 ECD_Q
 ClientSampleId :
 AR1660CCC500



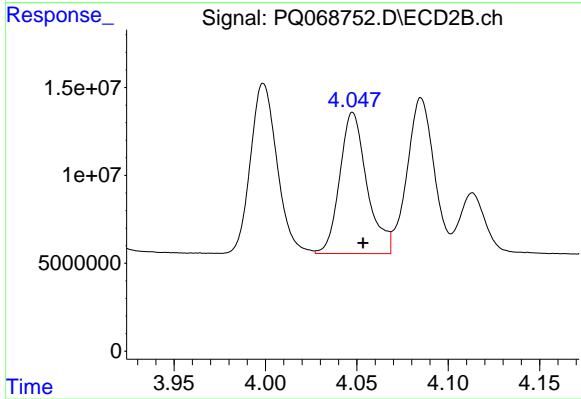
#5 AR-1016-3

R.T.: 3.999 min
 Delta R.T.: -0.006 min
 Response: 97810082
 Conc: 503.57 ng/ml



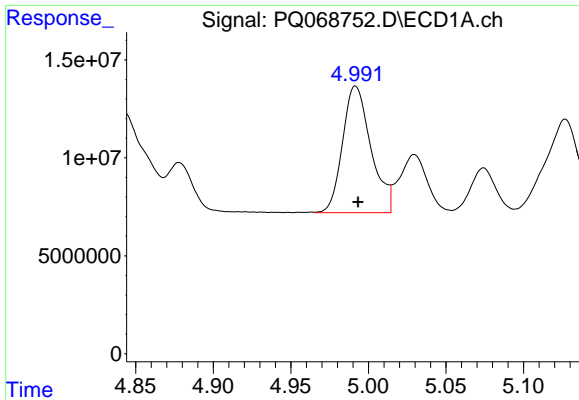
#6 AR-1016-4

R.T.: 4.706 min
 Delta R.T.: 0.000 min
 Response: 87573906
 Conc: 459.96 ng/ml



#6 AR-1016-4

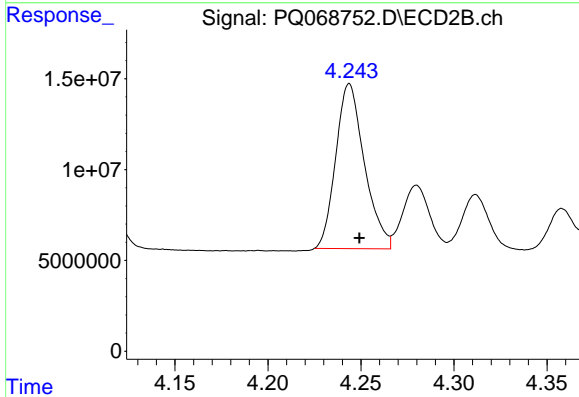
R.T.: 4.048 min
 Delta R.T.: -0.006 min
 Response: 83337465
 Conc: 516.03 ng/ml



#7 AR-1016-5

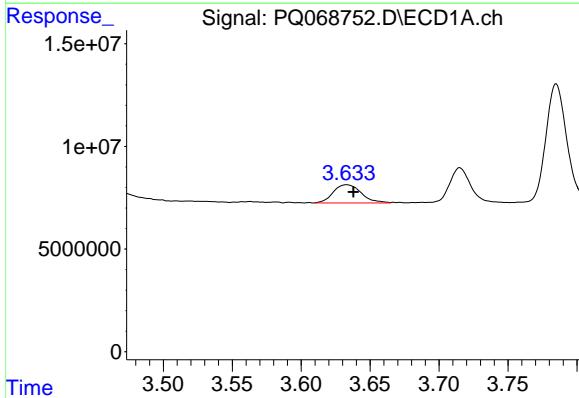
R.T.: 4.992 min
 Delta R.T.: -0.002 min
 Response: 82388190
 Conc: 465.98 ng/ml

Instrument :
 ECD_Q
 ClientSampleId :
 AR1660CCC500



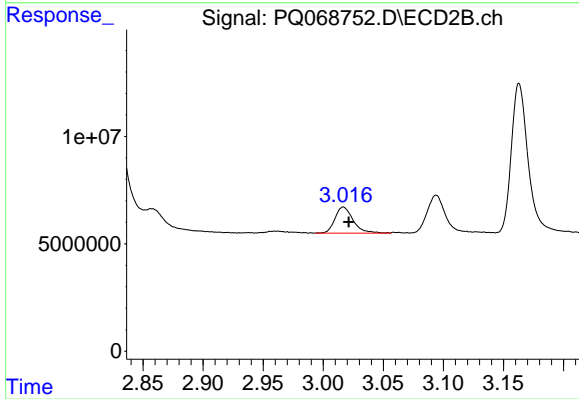
#7 AR-1016-5

R.T.: 4.244 min
 Delta R.T.: -0.005 min
 Response: 97183524
 Conc: 503.15 ng/ml



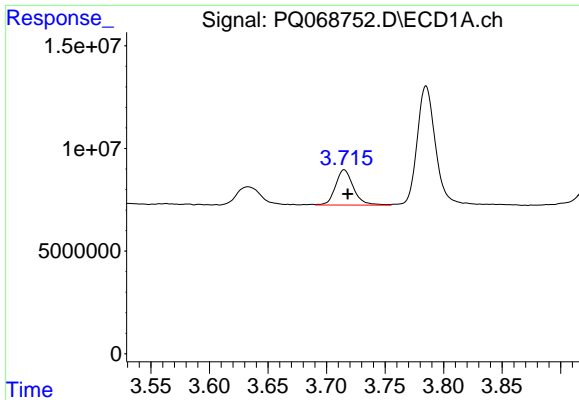
#8 AR-1221-1

R.T.: 3.633 min
 Delta R.T.: -0.005 min
 Response: 12562355
 Conc: 155.73 ng/ml



#8 AR-1221-1

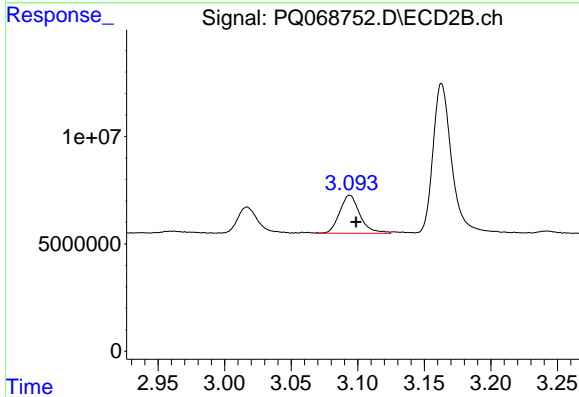
R.T.: 3.017 min
 Delta R.T.: -0.004 min
 Response: 12828622
 Conc: 144.39 ng/ml



#9 AR-1221-2

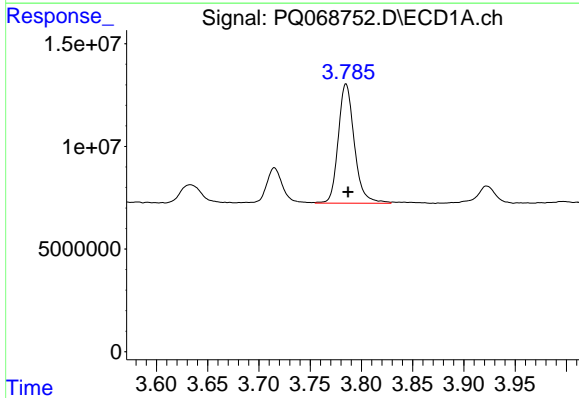
R.T.: 3.715 min
 Delta R.T.: -0.003 min
 Response: 18464014
 Conc: 306.42 ng/ml

Instrument :
 ECD_Q
 ClientSampleId :
 AR1660CCC500



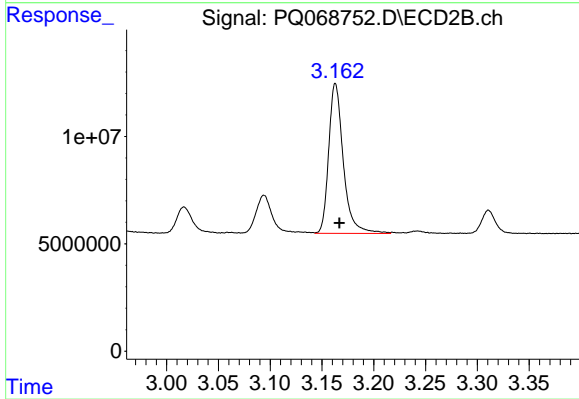
#9 AR-1221-2

R.T.: 3.094 min
 Delta R.T.: -0.005 min
 Response: 18840397
 Conc: 274.84 ng/ml



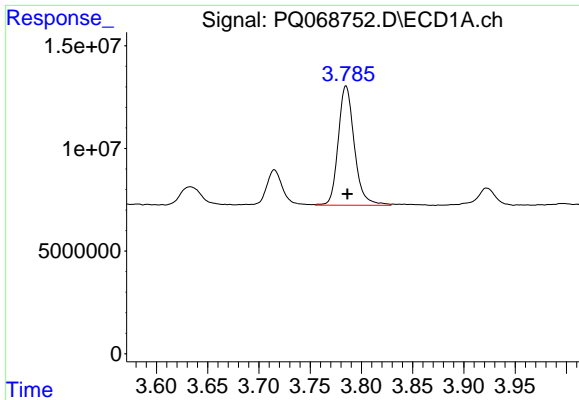
#10 AR-1221-3

R.T.: 3.785 min
 Delta R.T.: -0.002 min
 Response: 63622510
 Conc: 350.68 ng/ml



#10 AR-1221-3

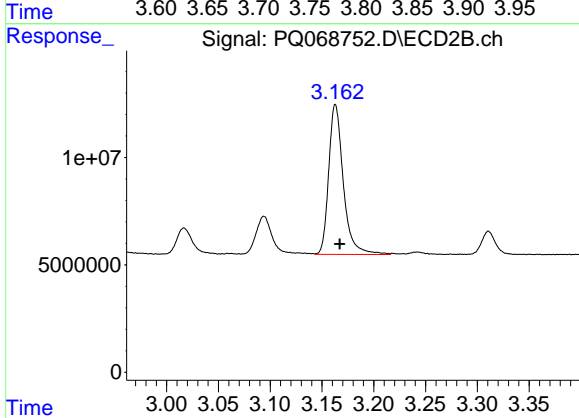
R.T.: 3.163 min
 Delta R.T.: -0.004 min
 Response: 68615210
 Conc: 347.16 ng/ml



#11 AR-1232-1

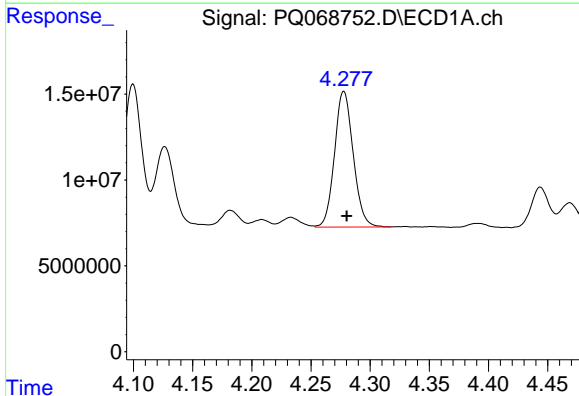
R.T.: 3.785 min
 Delta R.T.: -0.001 min
 Response: 63622510
 Conc: 396.38 ng/ml

Instrument :
 ECD_Q
 ClientSampleId :
 AR1660CCC500



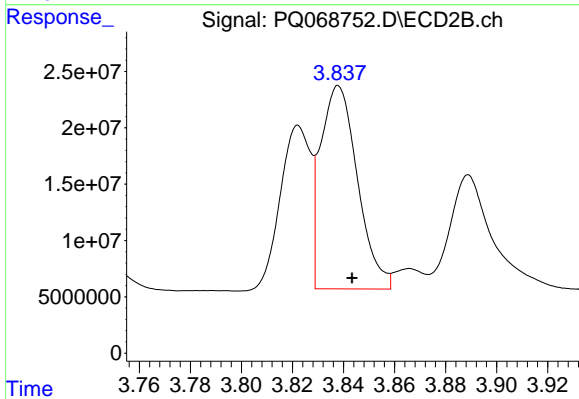
#11 AR-1232-1

R.T.: 3.163 min
 Delta R.T.: -0.004 min
 Response: 68615210
 Conc: 421.91 ng/ml



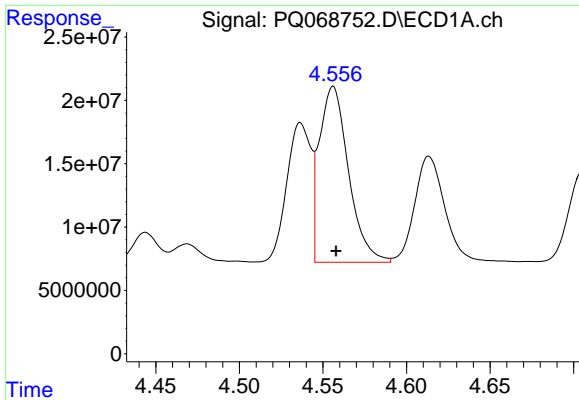
#12 AR-1232-2

R.T.: 4.278 min
 Delta R.T.: -0.002 min
 Response: 87023595
 Conc: 986.54 ng/ml



#12 AR-1232-2

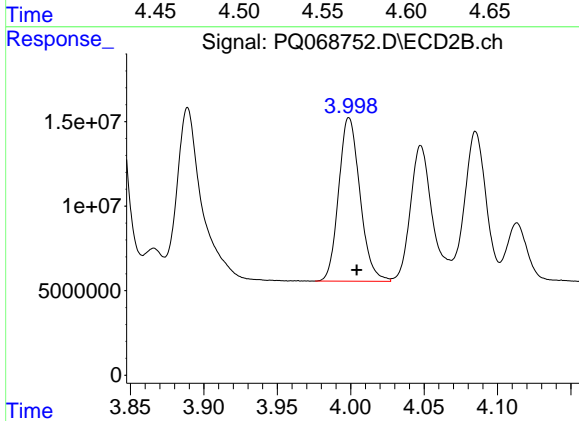
R.T.: 3.838 min
 Delta R.T.: -0.005 min
 Response: 181160125
 Conc: 1151.37 ng/ml



#13 AR-1232-3

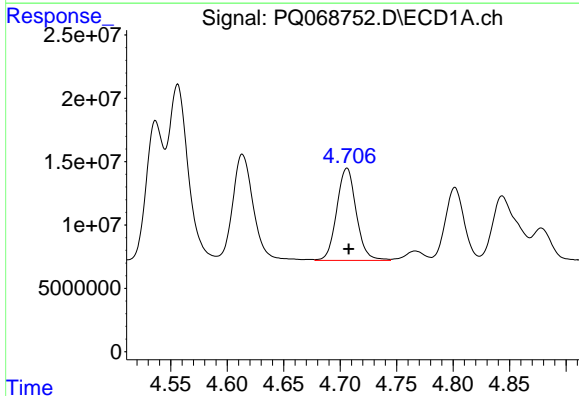
R.T.: 4.556 min
 Delta R.T.: -0.002 min
 Response: 169029102
 Conc: 1049.51 ng/ml

Instrument :
 ECD_Q
 ClientSampleId :
 AR1660CCC500



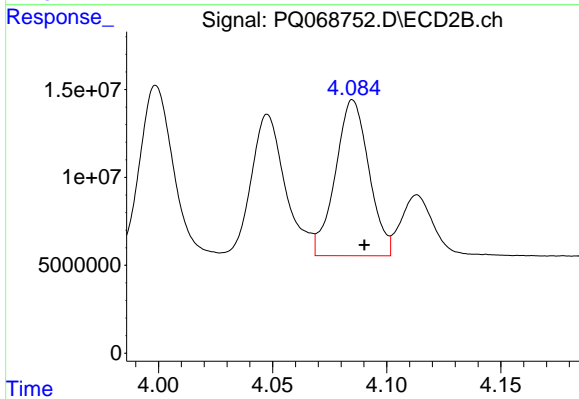
#13 AR-1232-3

R.T.: 3.999 min
 Delta R.T.: -0.005 min
 Response: 97810082
 Conc: 1175.88 ng/ml



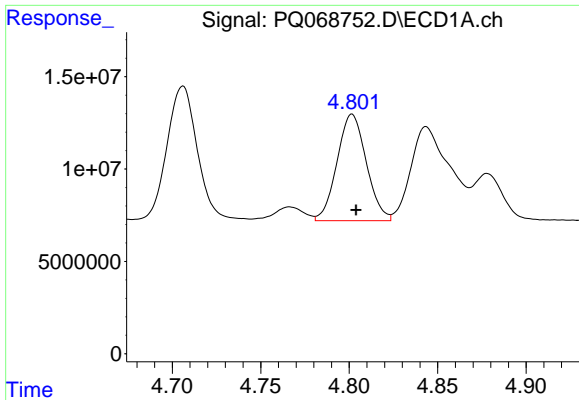
#14 AR-1232-4

R.T.: 4.706 min
 Delta R.T.: -0.001 min
 Response: 87573906
 Conc: 1094.23 ng/ml



#14 AR-1232-4

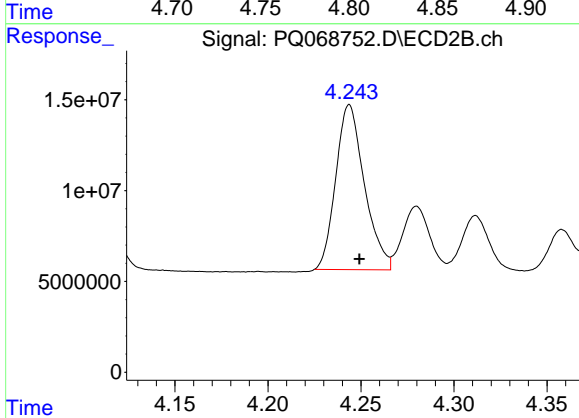
R.T.: 4.085 min
 Delta R.T.: -0.005 min
 Response: 90854152
 Conc: 1287.00 ng/ml



#15 AR-1232-5

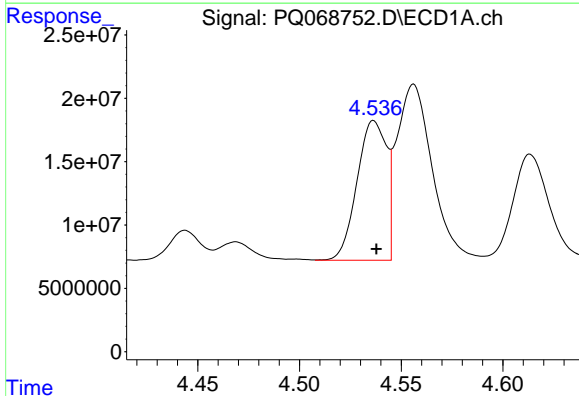
R.T.: 4.802 min
 Delta R.T.: -0.002 min
 Response: 66434859
 Conc: 1232.65 ng/ml

Instrument :
 ECD_Q
 ClientSampleId :
 AR1660CCC500



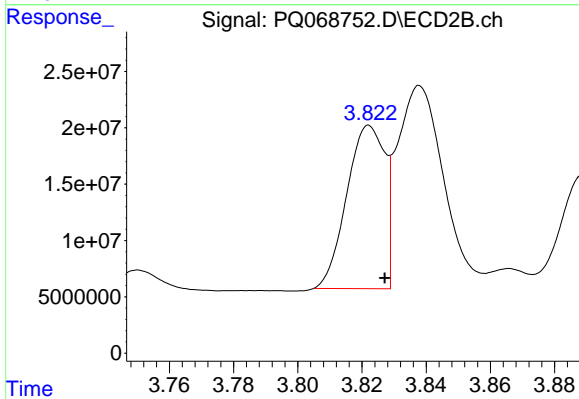
#15 AR-1232-5

R.T.: 4.244 min
 Delta R.T.: -0.005 min
 Response: 97183524
 Conc: 1229.74 ng/ml



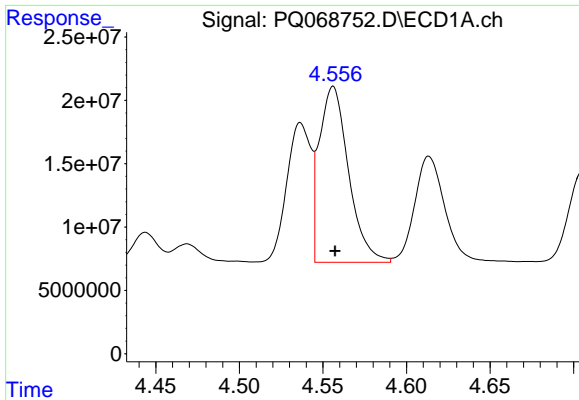
#16 AR-1242-1

R.T.: 4.536 min
 Delta R.T.: -0.001 min
 Response: 111086181
 Conc: 614.84 ng/ml



#16 AR-1242-1

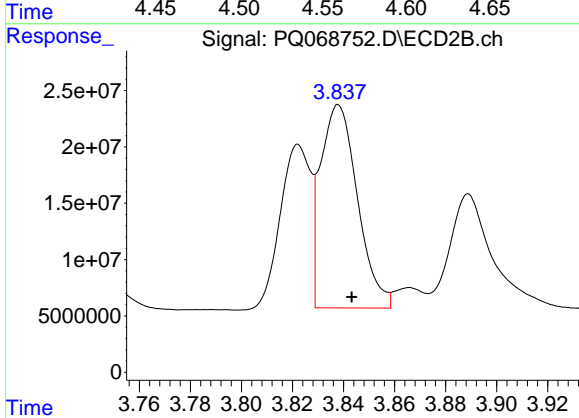
R.T.: 3.822 min
 Delta R.T.: -0.005 min
 Response: 118551889
 Conc: 649.02 ng/ml



#17 AR-1242-2

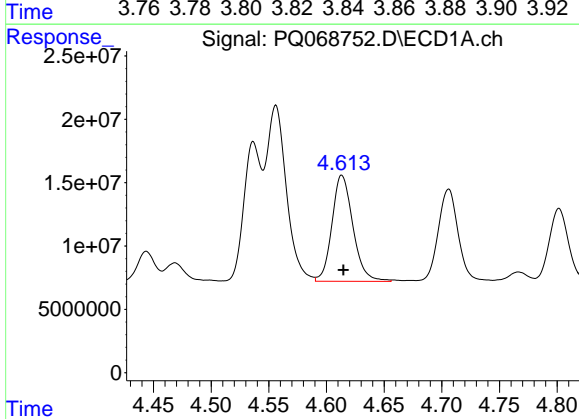
R.T.: 4.556 min
 Delta R.T.: -0.001 min
 Response: 169029102
 Conc: 607.20 ng/ml

Instrument :
 ECD_Q
 ClientSampleId :
 AR1660CCC500



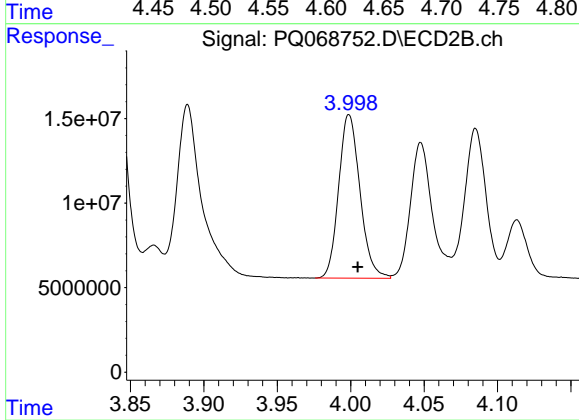
#17 AR-1242-2

R.T.: 3.838 min
 Delta R.T.: -0.005 min
 Response: 181160125
 Conc: 669.88 ng/ml



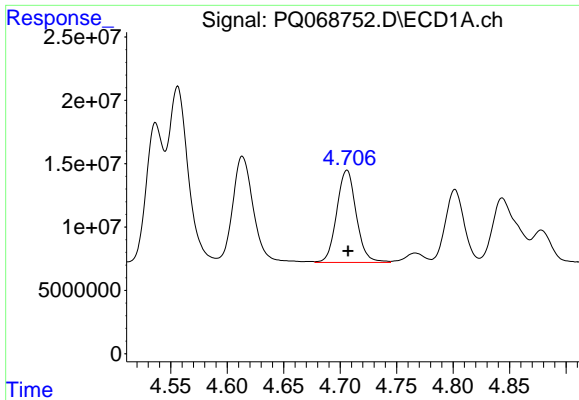
#18 AR-1242-3

R.T.: 4.613 min
 Delta R.T.: -0.001 min
 Response: 105572100
 Conc: 614.10 ng/ml



#18 AR-1242-3

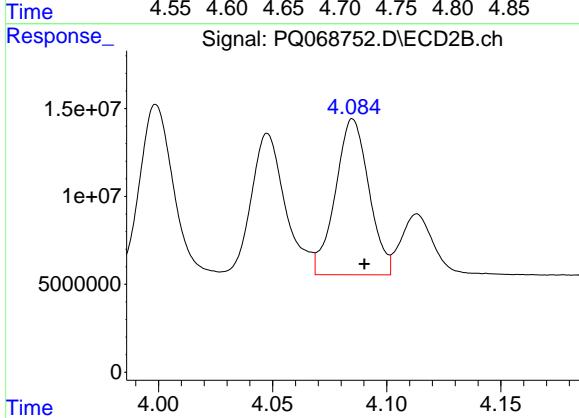
R.T.: 3.999 min
 Delta R.T.: -0.006 min
 Response: 97810082
 Conc: 664.62 ng/ml



#19 AR-1242-4

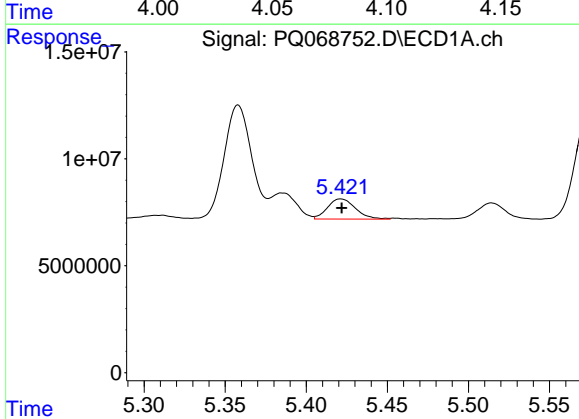
R.T.: 4.706 min
 Delta R.T.: 0.000 min
 Response: 87573906
 Conc: 617.16 ng/ml

Instrument :
 ECD_Q
 ClientSampleId :
 AR1660CCC500



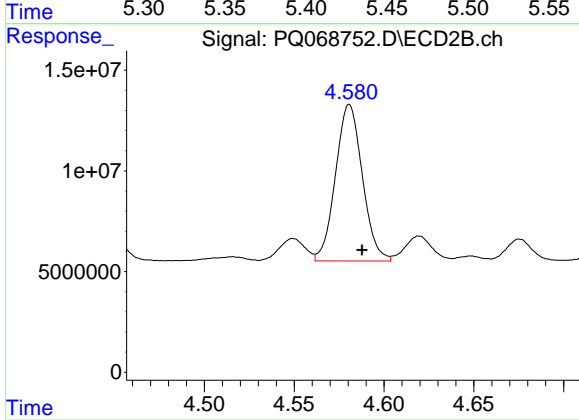
#19 AR-1242-4

R.T.: 4.085 min
 Delta R.T.: -0.005 min
 Response: 90854152
 Conc: 651.27 ng/ml



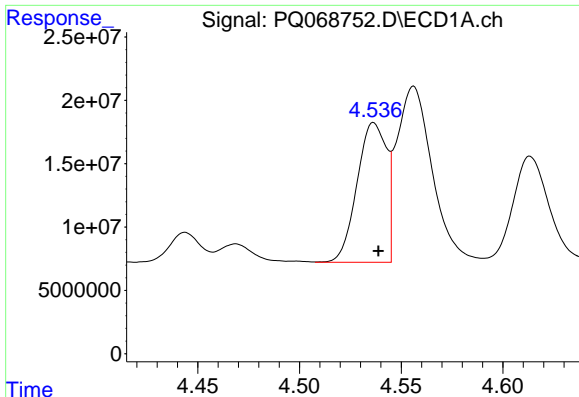
#20 AR-1242-5

R.T.: 5.421 min
 Delta R.T.: 0.000 min
 Response: 11338511
 Conc: 78.67 ng/ml



#20 AR-1242-5

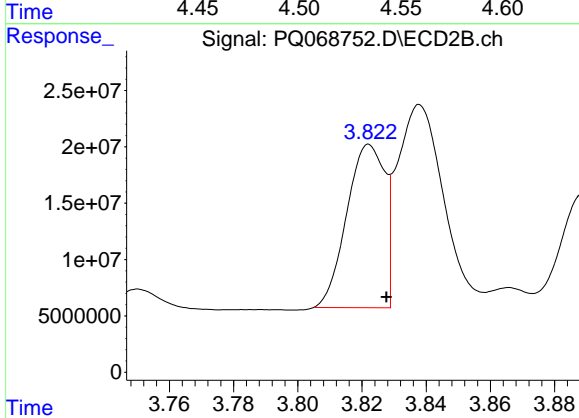
R.T.: 4.581 min
 Delta R.T.: -0.007 min
 Response: 80870762
 Conc: 430.40 ng/ml



#21 AR-1248-1

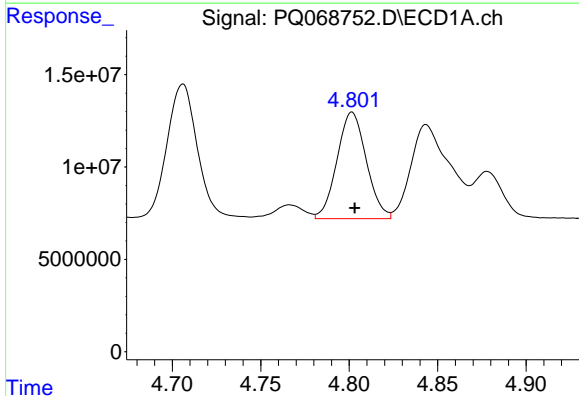
R.T.: 4.536 min
 Delta R.T.: -0.002 min
 Response: 111086181
 Conc: 792.65 ng/ml

Instrument :
 ECD_Q
 ClientSampleId :
 AR1660CCC500



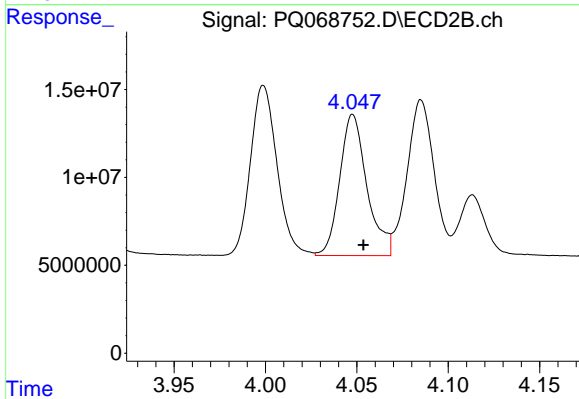
#21 AR-1248-1

R.T.: 3.822 min
 Delta R.T.: -0.005 min
 Response: 118551889
 Conc: 829.96 ng/ml



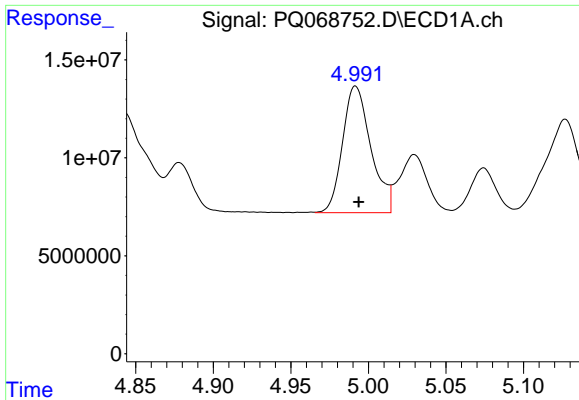
#22 AR-1248-2

R.T.: 4.802 min
 Delta R.T.: -0.001 min
 Response: 66434859
 Conc: 341.13 ng/ml



#22 AR-1248-2

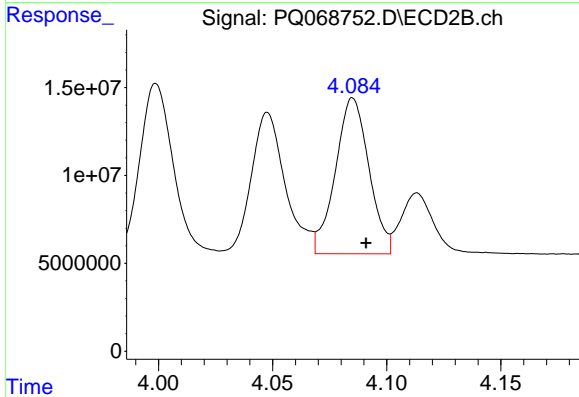
R.T.: 4.048 min
 Delta R.T.: -0.006 min
 Response: 83337465
 Conc: 387.04 ng/ml



#23 AR-1248-3

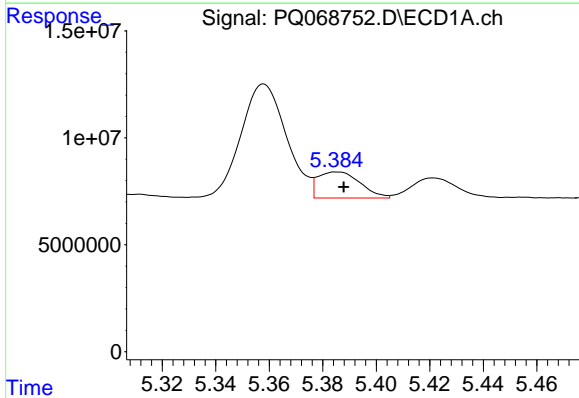
R.T.: 4.992 min
 Delta R.T.: -0.002 min
 Response: 82388190
 Conc: 351.11 ng/ml

Instrument :
 ECD_Q
 ClientSampleId :
 AR1660CCC500



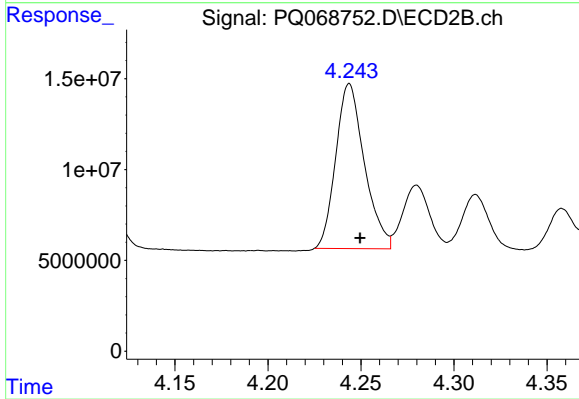
#23 AR-1248-3

R.T.: 4.085 min
 Delta R.T.: -0.006 min
 Response: 90854152
 Conc: 437.68 ng/ml



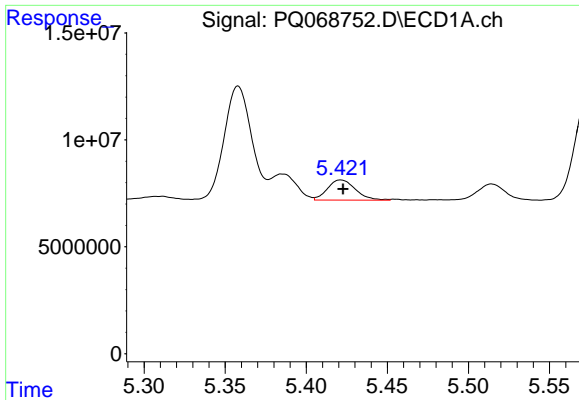
#24 AR-1248-4

R.T.: 5.385 min
 Delta R.T.: -0.002 min
 Response: 13448318
 Conc: 52.08 ng/ml



#24 AR-1248-4

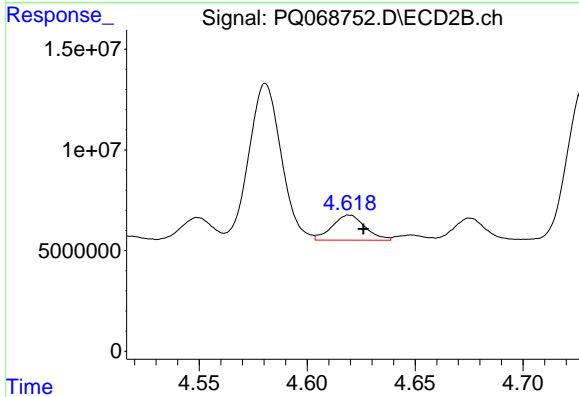
R.T.: 4.244 min
 Delta R.T.: -0.006 min
 Response: 97183524
 Conc: 380.27 ng/ml



#25 AR-1248-5

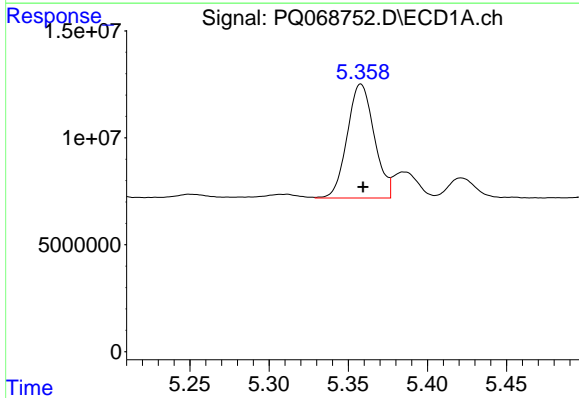
R.T.: 5.421 min
 Delta R.T.: -0.001 min
 Response: 11338511
 Conc: 44.77 ng/ml

Instrument :
 ECD_Q
 ClientSampleId :
 AR1660CCC500



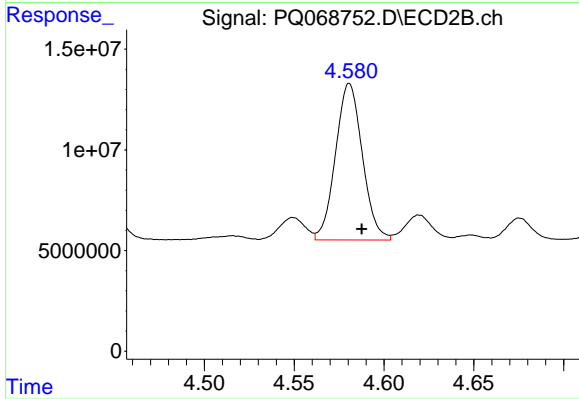
#25 AR-1248-5

R.T.: 4.620 min
 Delta R.T.: -0.006 min
 Response: 13258468
 Conc: 51.92 ng/ml



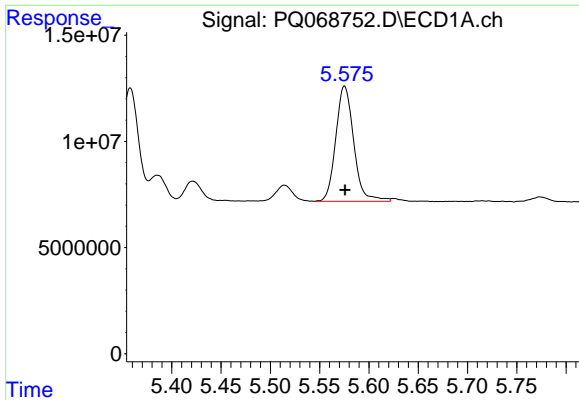
#26 AR-1254-1

R.T.: 5.358 min
 Delta R.T.: -0.001 min
 Response: 63135394
 Conc: 246.45 ng/ml



#26 AR-1254-1

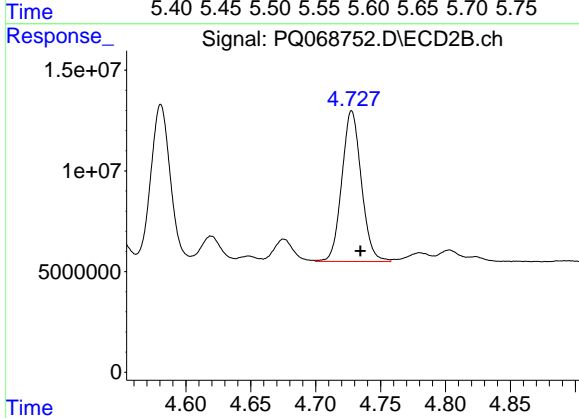
R.T.: 4.581 min
 Delta R.T.: -0.007 min
 Response: 80870762
 Conc: 217.25 ng/ml



#27 AR-1254-2

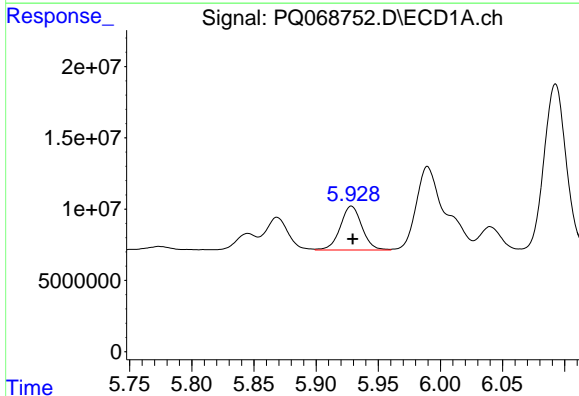
R.T.: 5.575 min
 Delta R.T.: 0.000 min
 Response: 68746420
 Conc: 175.70 ng/ml

Instrument :
 ECD_Q
 ClientSampleId :
 AR1660CCC500



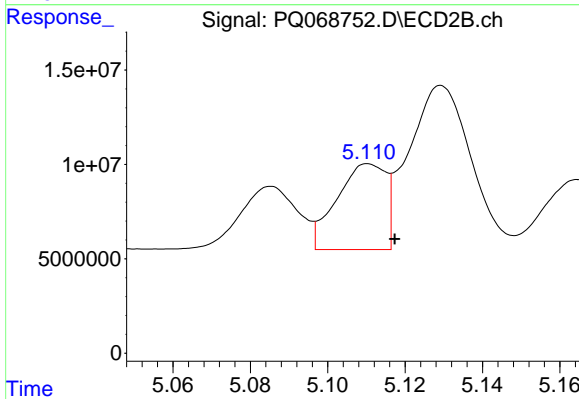
#27 AR-1254-2

R.T.: 4.728 min
 Delta R.T.: -0.007 min
 Response: 78156560
 Conc: 234.37 ng/ml



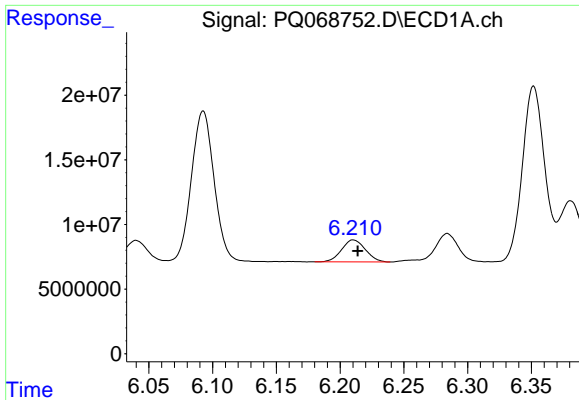
#28 AR-1254-3

R.T.: 5.928 min
 Delta R.T.: -0.001 min
 Response: 37327411
 Conc: 91.79 ng/ml



#28 AR-1254-3

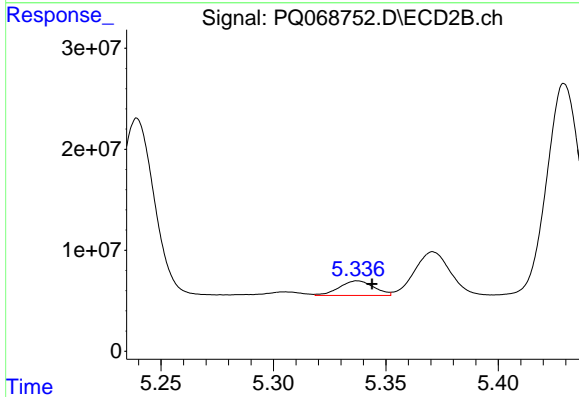
R.T.: 5.111 min
 Delta R.T.: -0.007 min
 Response: 39854615
 Conc: 77.57 ng/ml



#29 AR-1254-4

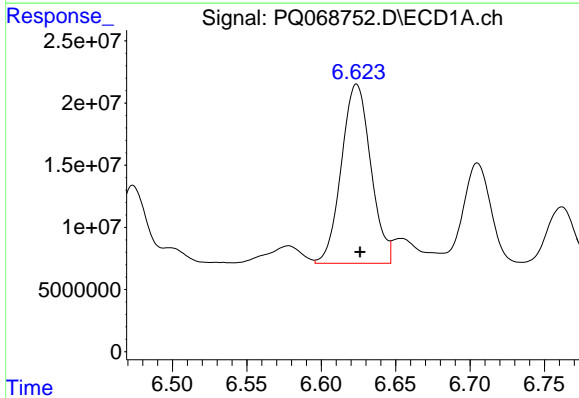
R.T.: 6.210 min
 Delta R.T.: -0.004 min
 Response: 22105621
 Conc: 76.75 ng/ml

Instrument :
 ECD_Q
 ClientSampleId :
 AR1660CCC500



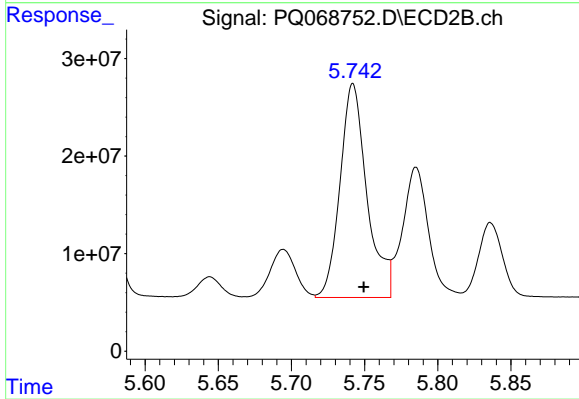
#29 AR-1254-4

R.T.: 5.337 min
 Delta R.T.: -0.006 min
 Response: 15332598
 Conc: 48.80 ng/ml



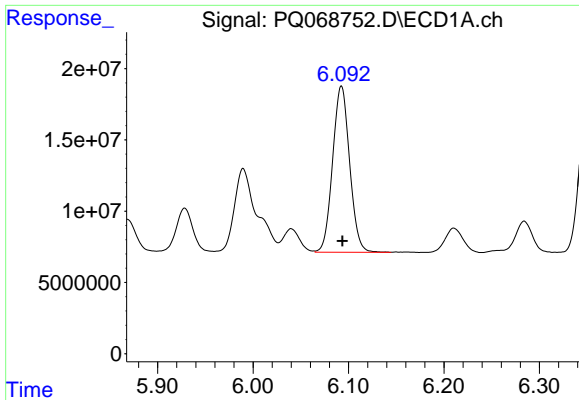
#30 AR-1254-5

R.T.: 6.624 min
 Delta R.T.: -0.002 min
 Response: 198342044
 Conc: 606.62 ng/ml



#30 AR-1254-5

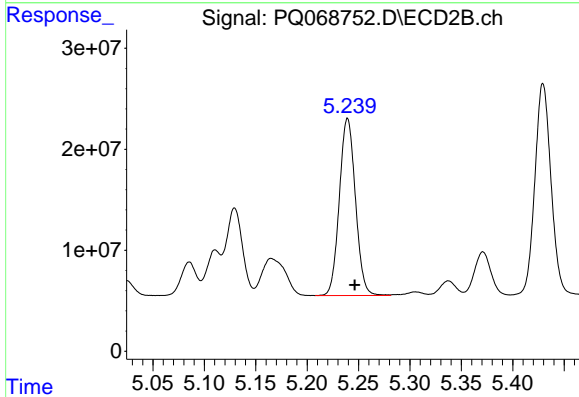
R.T.: 5.742 min
 Delta R.T.: -0.007 min
 Response: 280602143
 Conc: 587.59 ng/ml



#31 AR-1260-1

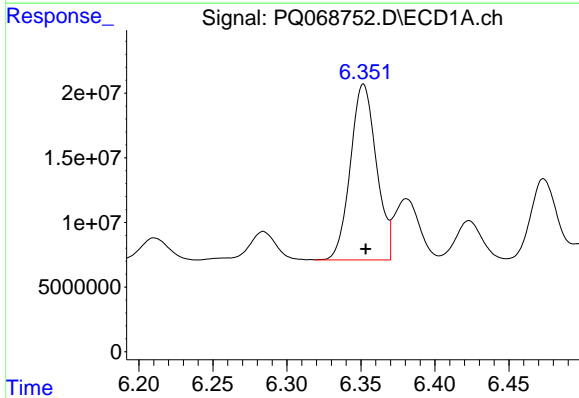
R.T.: 6.093 min
 Delta R.T.: -0.001 min
 Response: 144711913
 Conc: 435.16 ng/ml

Instrument :
 ECD_Q
 ClientSampleId :
 AR1660CCC500



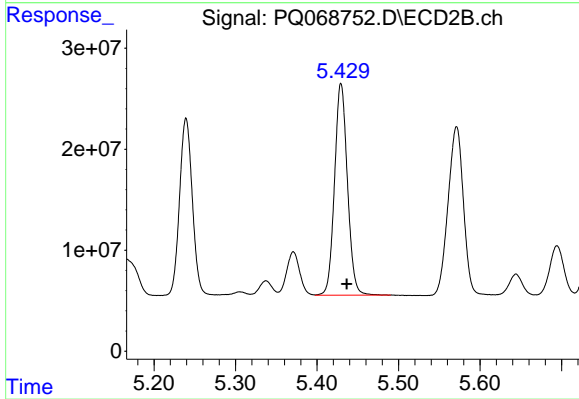
#31 AR-1260-1

R.T.: 5.239 min
 Delta R.T.: -0.007 min
 Response: 191237568
 Conc: 498.03 ng/ml



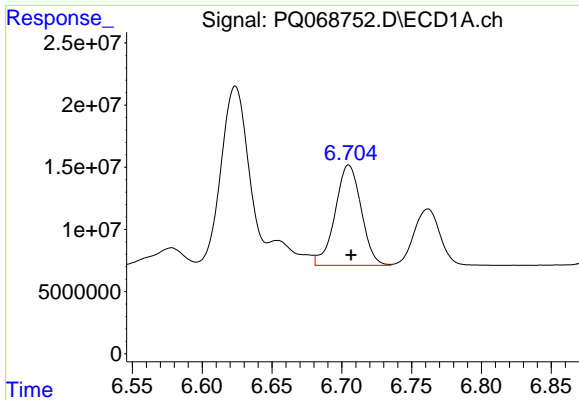
#32 AR-1260-2

R.T.: 6.352 min
 Delta R.T.: -0.002 min
 Response: 165921225
 Conc: 442.66 ng/ml



#32 AR-1260-2

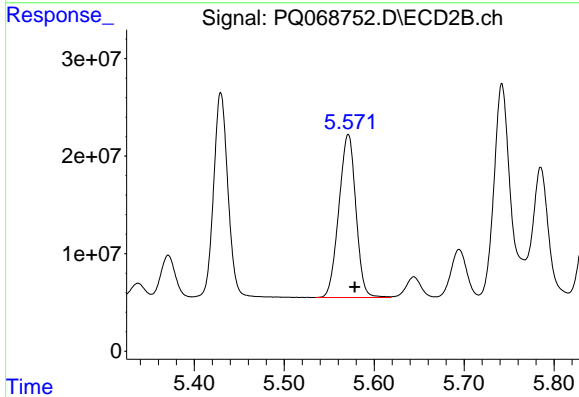
R.T.: 5.429 min
 Delta R.T.: -0.007 min
 Response: 230323849
 Conc: 505.32 ng/ml



#33 AR-1260-3

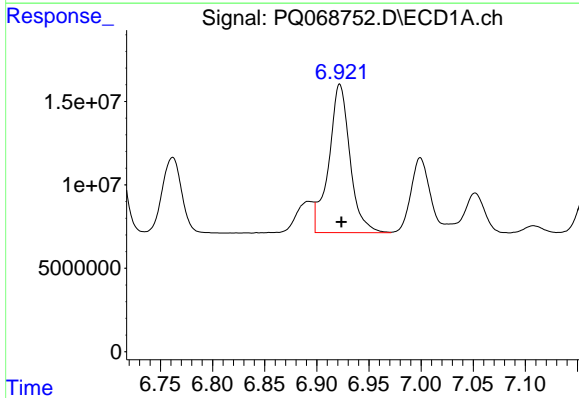
R.T.: 6.705 min
 Delta R.T.: -0.002 min
 Response: 105151580
 Conc: 447.43 ng/ml

Instrument :
 ECD_Q
 ClientSampleId :
 AR1660CCC500



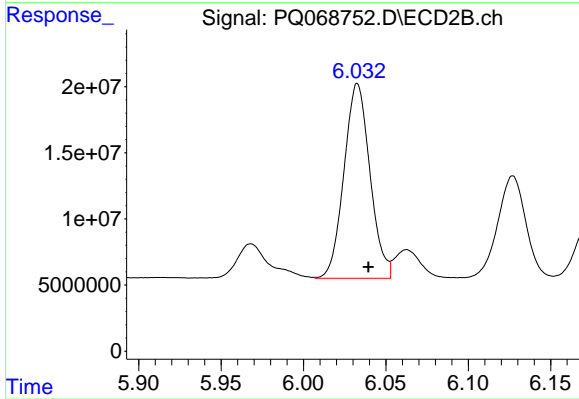
#33 AR-1260-3

R.T.: 5.571 min
 Delta R.T.: -0.007 min
 Response: 219959425
 Conc: 504.71 ng/ml



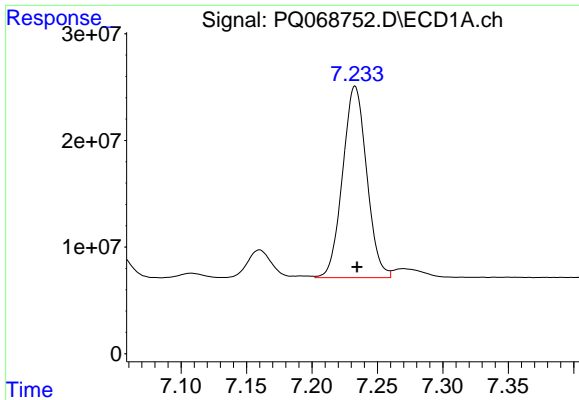
#34 AR-1260-4

R.T.: 6.922 min
 Delta R.T.: -0.002 min
 Response: 125358050
 Conc: 452.38 ng/ml



#34 AR-1260-4

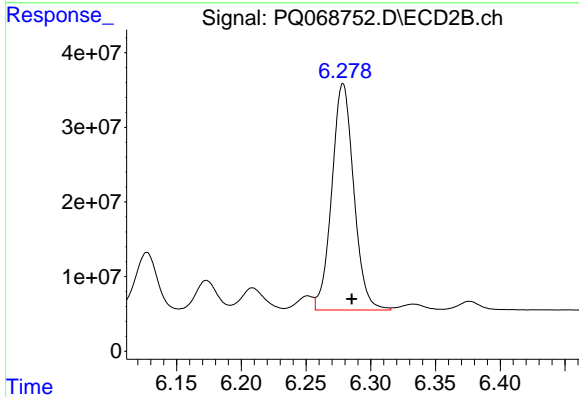
R.T.: 6.033 min
 Delta R.T.: -0.007 min
 Response: 161643572
 Conc: 503.10 ng/ml



#35 AR-1260-5

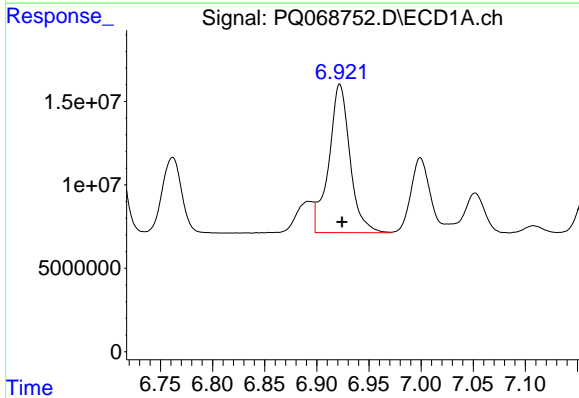
R.T.: 7.233 min
 Delta R.T.: -0.001 min
 Response: 229956533
 Conc: 430.26 ng/ml

Instrument :
 ECD_Q
 ClientSampleId :
 AR1660CCC500



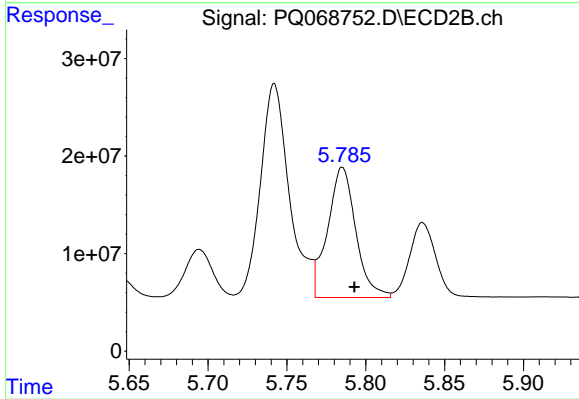
#35 AR-1260-5

R.T.: 6.279 min
 Delta R.T.: -0.007 min
 Response: 358783276
 Conc: 492.34 ng/ml



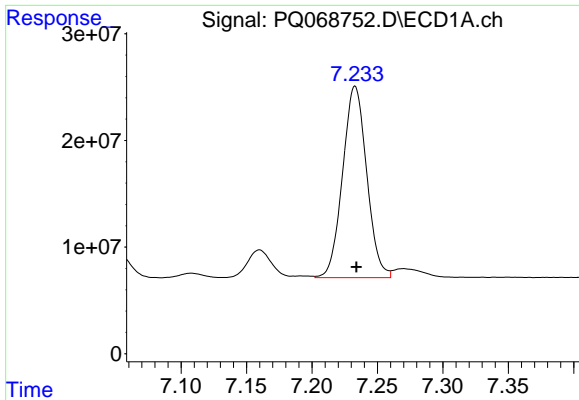
#36 AR-1262-1

R.T.: 6.922 min
 Delta R.T.: -0.002 min
 Response: 125358050
 Conc: 354.52 ng/ml



#36 AR-1262-1

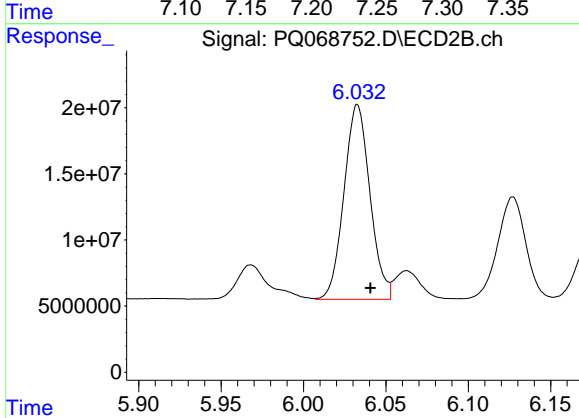
R.T.: 5.785 min
 Delta R.T.: -0.008 min
 Response: 165800466
 Conc: 341.67 ng/ml



#37 AR-1262-2

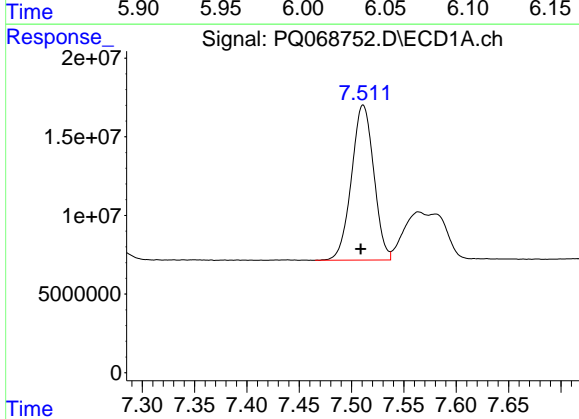
R.T.: 7.233 min
 Delta R.T.: 0.000 min
 Response: 229956533
 Conc: 352.14 ng/ml

Instrument :
 ECD_Q
 ClientSampleId :
 AR1660CCC500



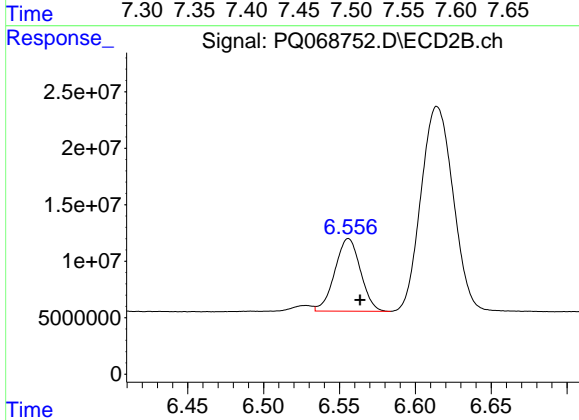
#37 AR-1262-2

R.T.: 6.033 min
 Delta R.T.: -0.008 min
 Response: 161643572
 Conc: 362.93 ng/ml



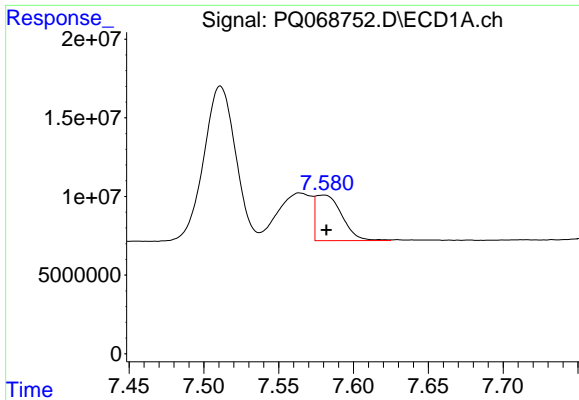
#38 AR-1262-3

R.T.: 7.511 min
 Delta R.T.: 0.002 min
 Response: 145950124
 Conc: 339.66 ng/ml



#38 AR-1262-3

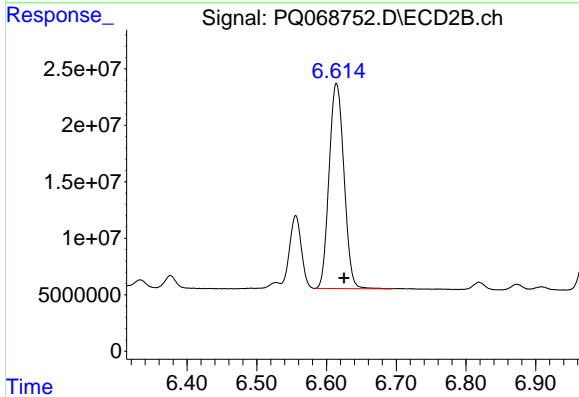
R.T.: 6.556 min
 Delta R.T.: -0.008 min
 Response: 75784143
 Conc: 213.97 ng/ml



#39 AR-1262-4

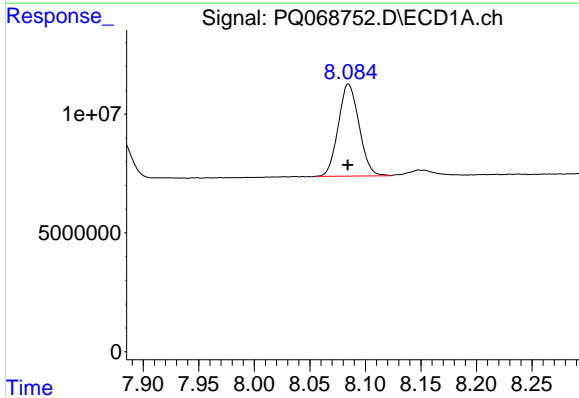
R.T.: 7.580 min
 Delta R.T.: -0.002 min
 Response: 35224651
 Conc: 105.63 ng/ml

Instrument :
 ECD_Q
 ClientSampleId :
 AR1660CCC500



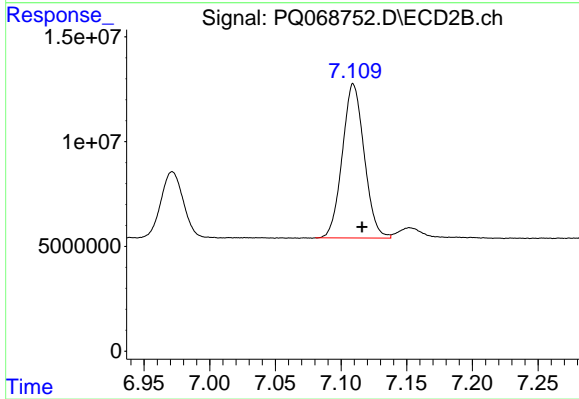
#39 AR-1262-4

R.T.: 6.614 min
 Delta R.T.: -0.011 min
 Response: 269148513
 Conc: 406.37 ng/ml



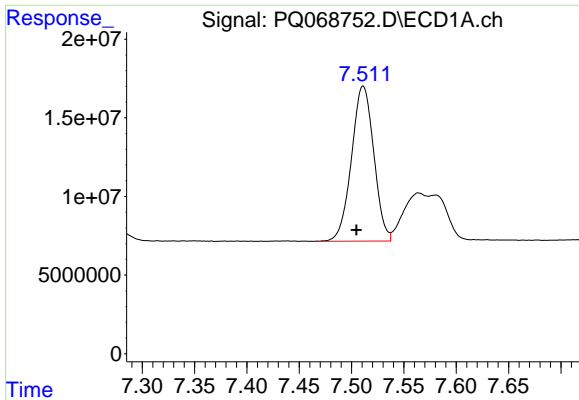
#40 AR-1262-5

R.T.: 8.085 min
 Delta R.T.: 0.000 min
 Response: 50555883
 Conc: 240.00 ng/ml



#40 AR-1262-5

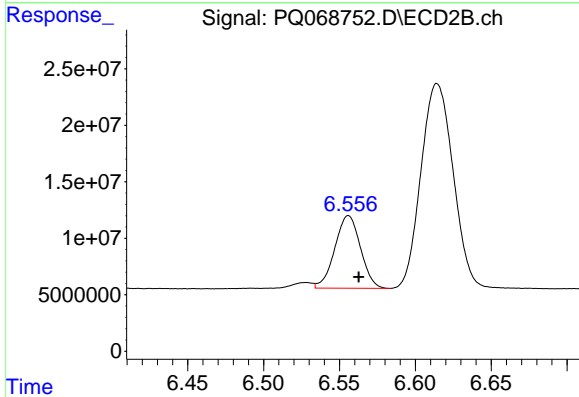
R.T.: 7.109 min
 Delta R.T.: -0.007 min
 Response: 85329050
 Conc: 278.88 ng/ml



#41 AR-1268-1

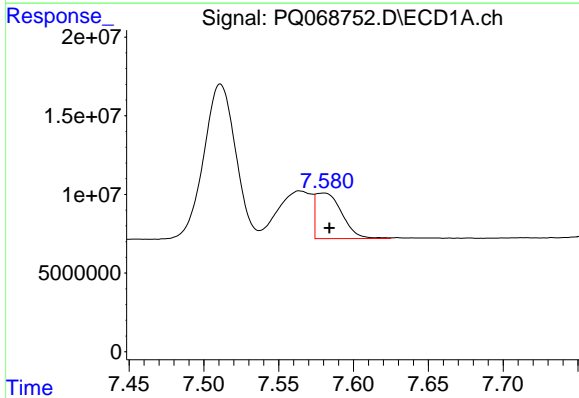
R.T.: 7.511 min
 Delta R.T.: 0.007 min
 Response: 145950124
 Conc: 202.30 ng/ml

Instrument :
 ECD_Q
 ClientSampleId :
 AR1660CCC500



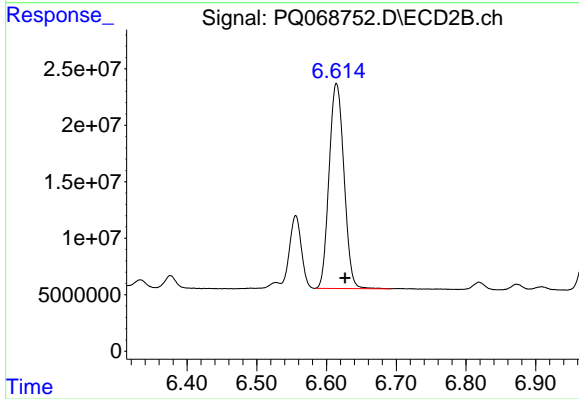
#41 AR-1268-1

R.T.: 6.556 min
 Delta R.T.: -0.007 min
 Response: 75784143
 Conc: 74.48 ng/ml



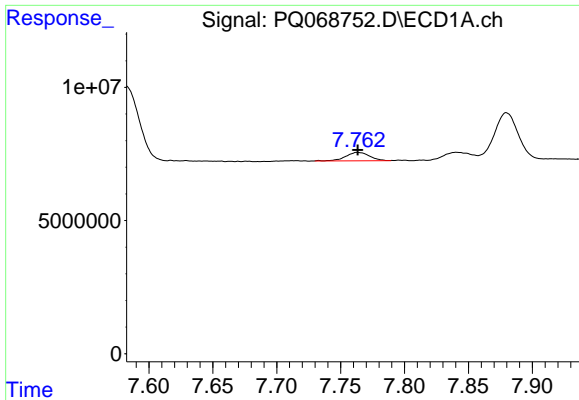
#42 AR-1268-2

R.T.: 7.580 min
 Delta R.T.: -0.004 min
 Response: 35224651
 Conc: 53.37 ng/ml



#42 AR-1268-2

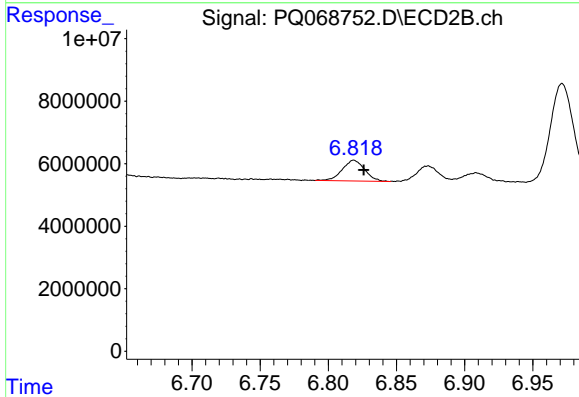
R.T.: 6.614 min
 Delta R.T.: -0.012 min
 Response: 269148513
 Conc: 296.55 ng/ml



#43 AR-1268-3

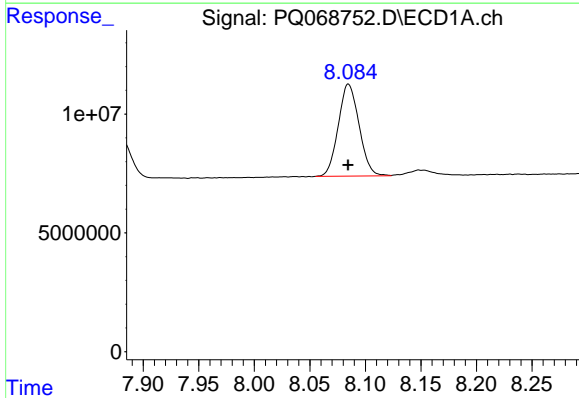
R.T.: 7.763 min
 Delta R.T.: 0.000 min
 Response: 4088804
 Conc: 7.55 ng/ml

Instrument :
 ECD_Q
 ClientSampleId :
 AR1660CCC500



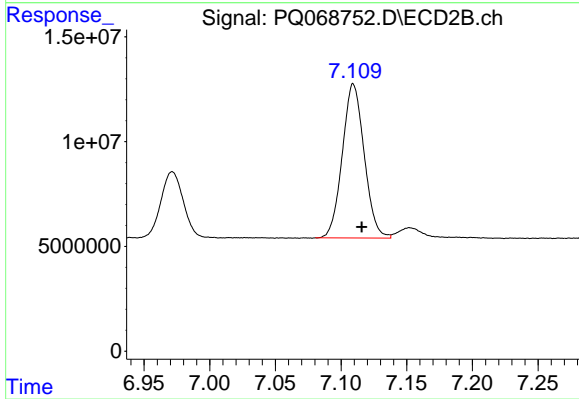
#43 AR-1268-3

R.T.: 6.819 min
 Delta R.T.: -0.007 min
 Response: 7624624
 Conc: 9.60 ng/ml



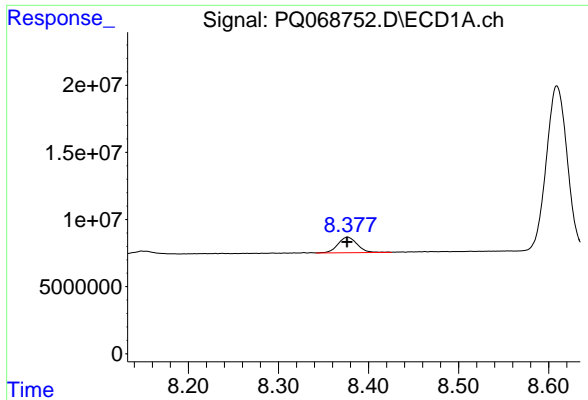
#44 AR-1268-4

R.T.: 8.085 min
 Delta R.T.: 0.000 min
 Response: 50555883
 Conc: 234.55 ng/ml



#44 AR-1268-4

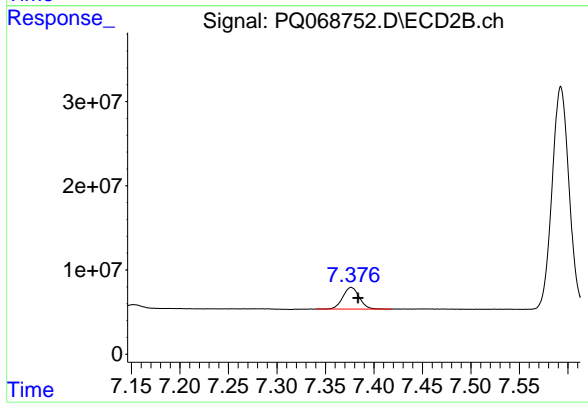
R.T.: 7.109 min
 Delta R.T.: -0.006 min
 Response: 85329050
 Conc: 269.68 ng/ml



#45 AR-1268-5

R.T.: 8.377 min
Delta R.T.: 0.000 min
Response: 17304400
Conc: 10.94 ng/ml

Instrument :
ECD_Q
ClientSampleId :
AR1660CCC500



#45 AR-1268-5

R.T.: 7.377 min
Delta R.T.: -0.007 min
Response: 30398506
Conc: 12.86 ng/ml