

Data Path : Z:\pestpcbsrv\HPCHEM1\ECD\_Q\Data\PQ092424\  
 Data File : PQ068768.D  
 Signal(s) : Signal #1: ECD1A.ch Signal #2: ECD2B.ch  
 Acq On : 25 Sep 2024 04:32  
 Operator : YP\AJ  
 Sample : AR1242CCC500  
 Misc :  
 ALS Vial : 4 Sample Multiplier: 1

**Instrument :**  
 ECD\_Q  
**ClientSampleId :**  
 AR1242CCC500

**Manual Integrations**  
**APPROVED**

Reviewed By :Yogesh Patel 09/25/2024  
 Supervised By :Ankita Jodhani 09/25/2024

Integration File signal 1: autoint1.e  
 Integration File signal 2: autoint2.e  
 Quant Time: Sep 25 07:10:13 2024  
 Quant Method : Z:\pestpcbsrv\HPCHEM1\ECD\_Q\Method\PQ090624.M  
 Quant Title : GC EXTRACTABLES  
 QLast Update : Tue Sep 10 13:06:53 2024  
 Response via : Initial Calibration  
 Integrator: ChemStation

Volume Inj. : 2 µl  
 Signal #1 Phase : ZB-MR1 Signal #2 Phase: ZB-MR2  
 Signal #1 Info : 30Mx0.32mmx 0.50µ Signal #2 Info : 30M x 0.32mm x 0.25µm

Compound	RT#1	RT#2	Resp#1	Resp#2	ng/ml	ng/ml
-----						
System Monitoring Compounds						
1) SA Tetrachlo...	3.436	2.819	327.5E6	339.5E6	45.861	47.672
2) SA Decachlor...	8.607	7.591	186.7E6	304.1E6	42.840	46.043m
Target Compounds						
16) L4 AR-1242-1	4.537	3.822	78802578	87316926	436.154	478.024
17) L4 AR-1242-2	4.555	3.838	122.2E6	129.5E6	438.834	478.834
18) L4 AR-1242-3	4.613	3.999	77179931	71073365	448.947	482.943
19) L4 AR-1242-4	4.705	4.085	63994326	66981091	450.985	480.141
20) L4 AR-1242-5	5.421	4.582	60115567	91696036	417.120	488.008
-----						

(f)=RT Delta > 1/2 Window (#)=Amounts differ by > 25% (m)=manual int.

Data Path : Z:\pestpcbsrv\HPCHEM1\ECD\_Q\Data\PQ092424\  
 Data File : PQ068768.D  
 Signal(s) : Signal #1: ECD1A.ch Signal #2: ECD2B.ch  
 Acq On : 25 Sep 2024 04:32  
 Operator : YP\AJ  
 Sample : AR1242CCC500  
 Misc :  
 ALS Vial : 4 Sample Multiplier: 1

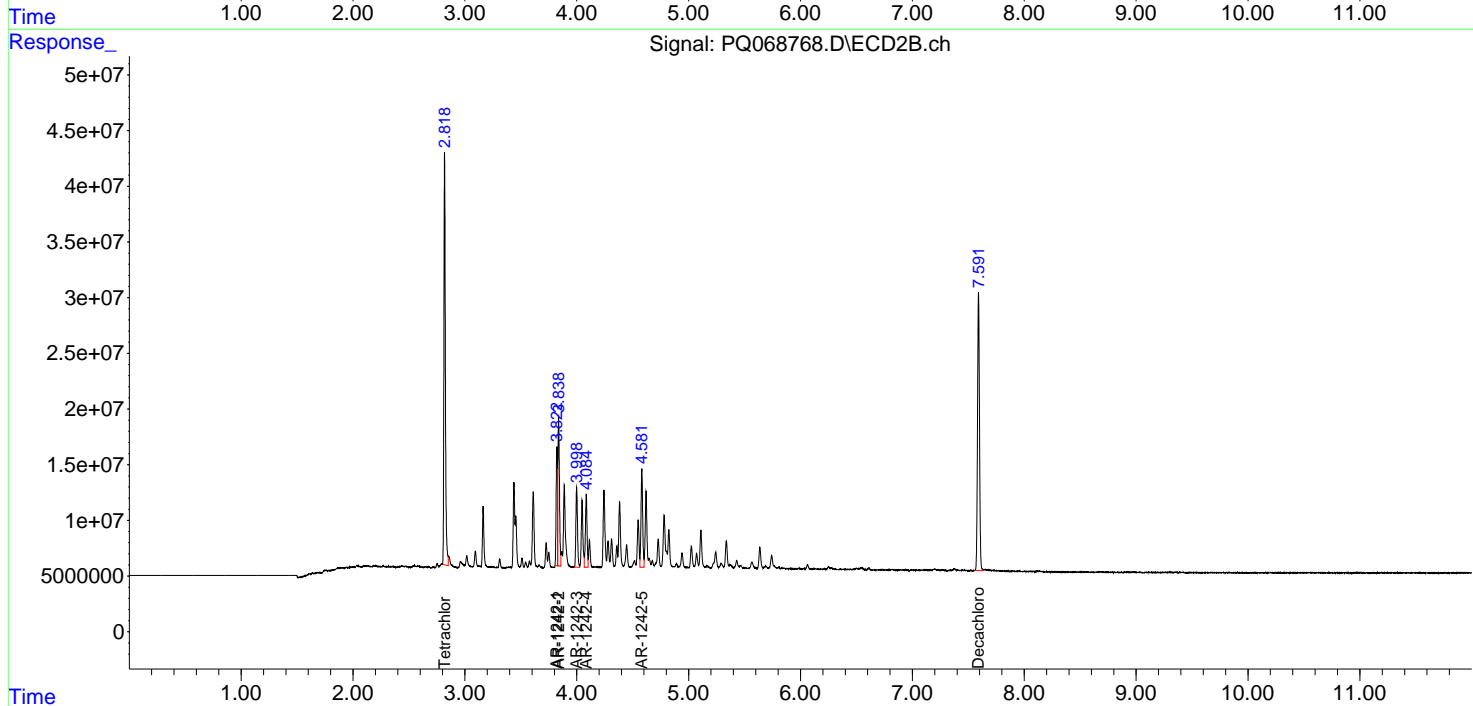
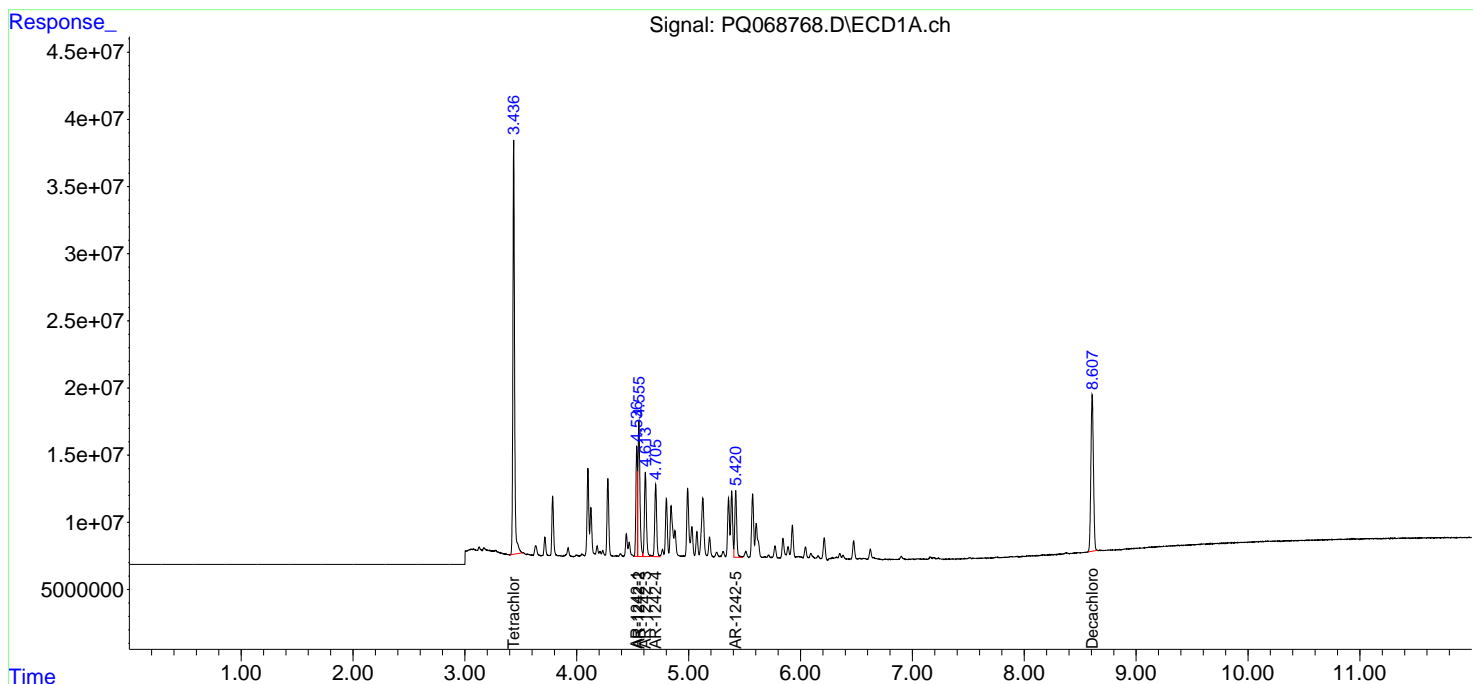
Instrument :  
 ECD\_Q  
 ClientSampleId :  
 AR1242CCC500

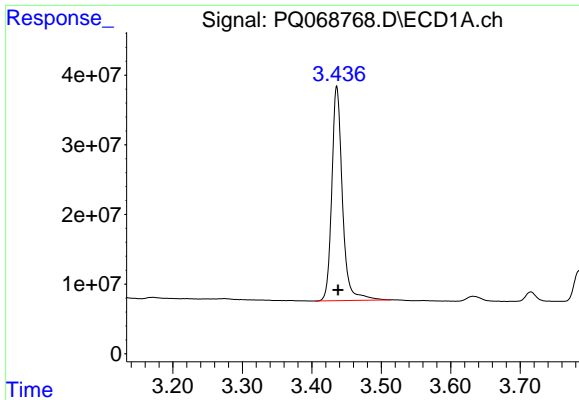
Manual Integrations  
 APPROVED

Reviewed By :Yogesh Patel 09/25/2024  
 Supervised By :Ankita Jodhani 09/25/2024

Integration File signal 1: autoint1.e  
 Integration File signal 2: autoint2.e  
 Quant Time: Sep 25 07:10:13 2024  
 Quant Method : Z:\pestpcbsrv\HPCHEM1\ECD\_Q\Method\PQ090624.M  
 Quant Title : GC EXTRACTABLES  
 QLast Update : Tue Sep 10 13:06:53 2024  
 Response via : Initial Calibration  
 Integrator: ChemStation

Volume Inj. : 2 µl  
 Signal #1 Phase : ZB-MR1 Signal #2 Phase: ZB-MR2  
 Signal #1 Info : 30Mx0.32mmx 0.50µ Signal #2 Info : 30M x 0.32mm x 0.25µm





#1 Tetrachloro-m-xylene

R.T.: 3.436 min  
 Delta R.T.: -0.002 min  
 Response: 327473988  
 Conc: 45.86 ng/ml

Instrument :

ECD\_Q

ClientSampleId :

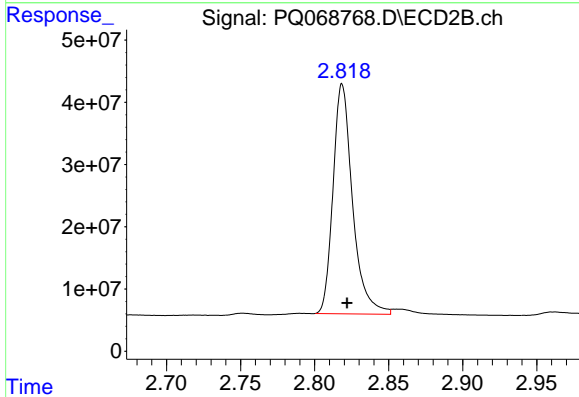
AR1242CCC500

Manual Integrations

APPROVED

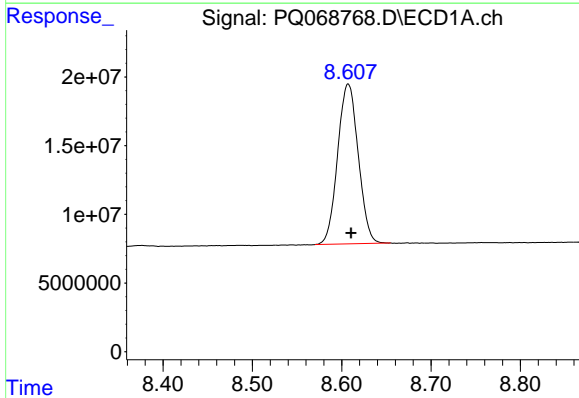
Reviewed By :Yogesh Patel 09/25/2024

Supervised By :Ankita Jodhani 09/25/2024



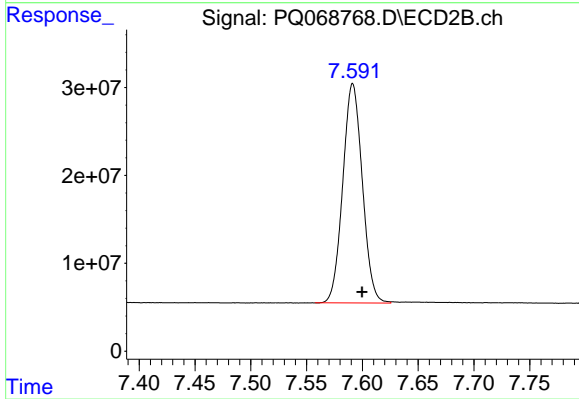
#1 Tetrachloro-m-xylene

R.T.: 2.819 min  
 Delta R.T.: -0.003 min  
 Response: 339532052  
 Conc: 47.67 ng/ml



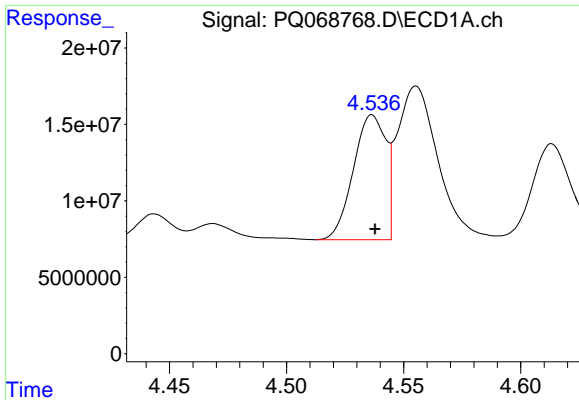
#2 Decachlorobiphenyl

R.T.: 8.607 min  
 Delta R.T.: -0.003 min  
 Response: 186708299  
 Conc: 42.84 ng/ml



#2 Decachlorobiphenyl

R.T.: 7.591 min  
 Delta R.T.: -0.009 min  
 Response: 304062881  
 Conc: 46.04 ng/ml m



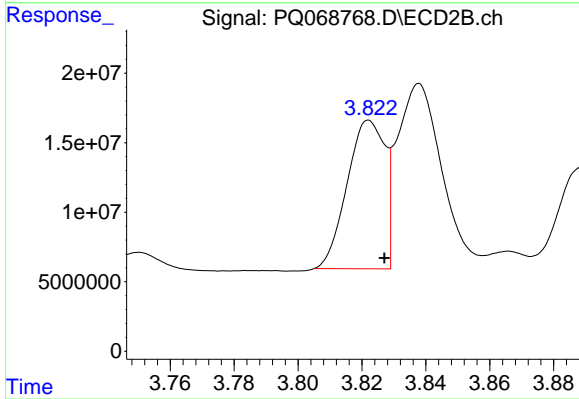
#16 AR-1242-1

R.T.: 4.537 min  
 Delta R.T.: -0.001 min  
 Response: 78802578  
 Conc: 436.15 ng/ml

Instrument :  
 ECD\_Q  
 ClientSampleId :  
 AR1242CCC500

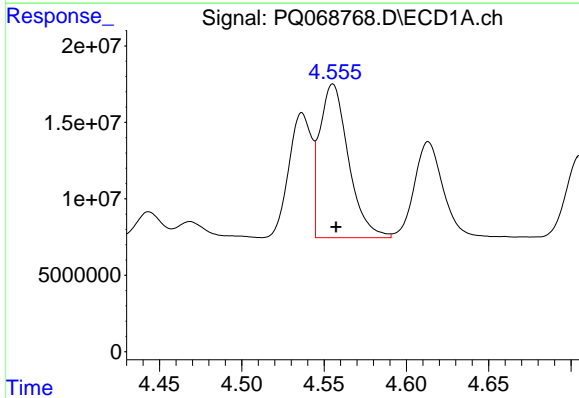
Manual Integrations  
 APPROVED

Reviewed By :Yogesh Patel 09/25/2024  
 Supervised By :Ankita Jodhani 09/25/2024



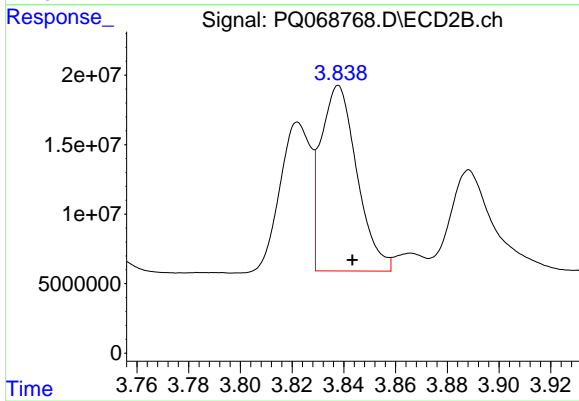
#16 AR-1242-1

R.T.: 3.822 min  
 Delta R.T.: -0.005 min  
 Response: 87316926  
 Conc: 478.02 ng/ml



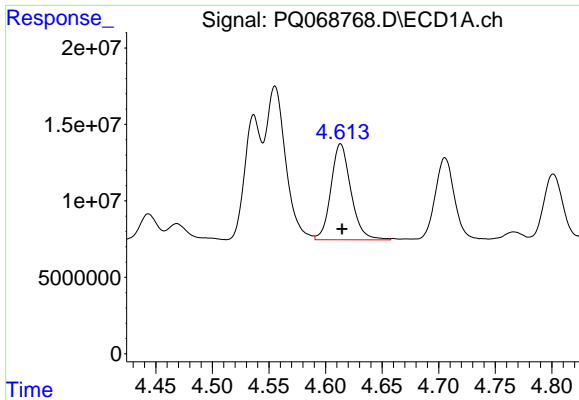
#17 AR-1242-2

R.T.: 4.555 min  
 Delta R.T.: -0.002 min  
 Response: 122159623  
 Conc: 438.83 ng/ml



#17 AR-1242-2

R.T.: 3.838 min  
 Delta R.T.: -0.005 min  
 Response: 129494581  
 Conc: 478.83 ng/ml



#18 AR-1242-3

R.T.: 4.613 min  
 Delta R.T.: -0.001 min  
 Response: 77179931  
 Conc: 448.95 ng/ml

Instrument :

ECD\_Q

ClientSampleId :

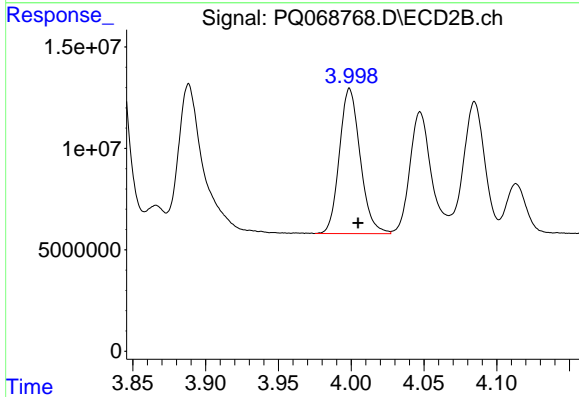
AR1242CCC500

Manual Integrations

APPROVED

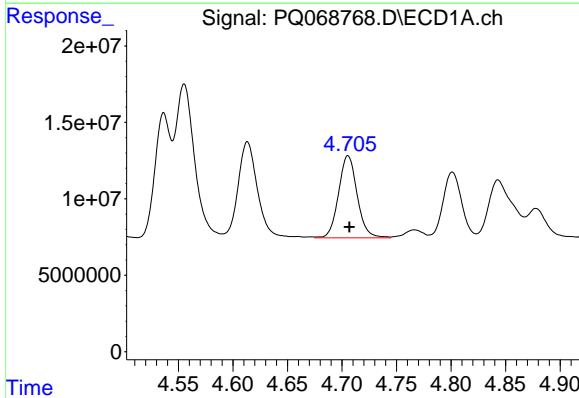
Reviewed By :Yogesh Patel 09/25/2024

Supervised By :Ankita Jodhani 09/25/2024



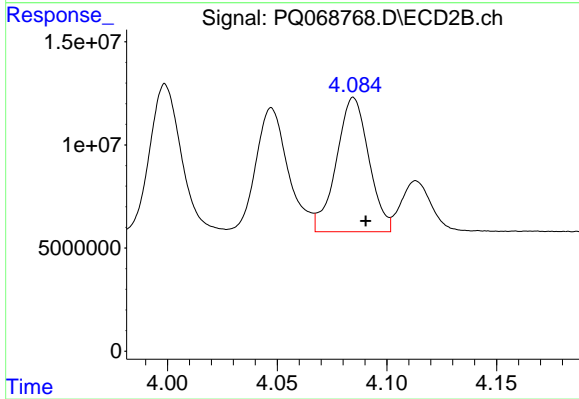
#18 AR-1242-3

R.T.: 3.999 min  
 Delta R.T.: -0.006 min  
 Response: 71073365  
 Conc: 482.94 ng/ml



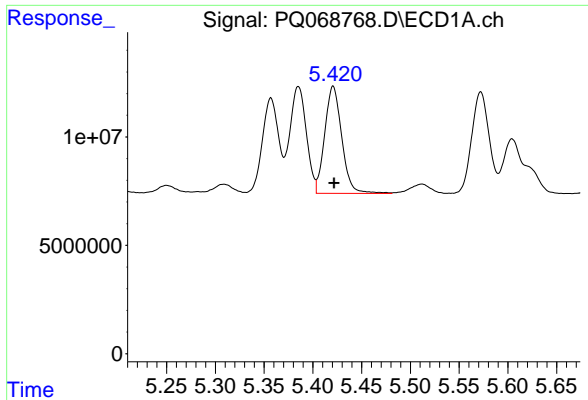
#19 AR-1242-4

R.T.: 4.705 min  
 Delta R.T.: -0.002 min  
 Response: 63994326  
 Conc: 450.99 ng/ml



#19 AR-1242-4

R.T.: 4.085 min  
 Delta R.T.: -0.005 min  
 Response: 66981091  
 Conc: 480.14 ng/ml



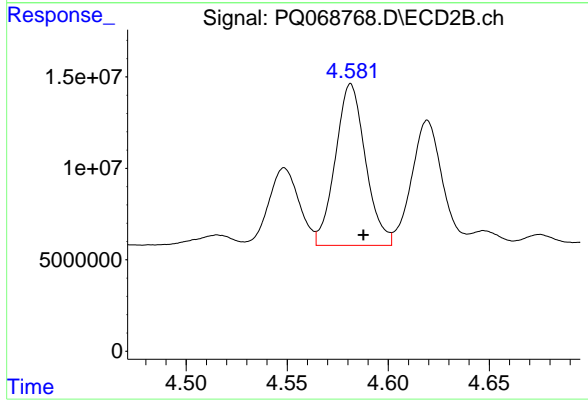
#20 AR-1242-5

R.T.: 5.421 min  
 Delta R.T.: -0.001 min  
 Response: 60115567  
 Conc: 417.12 ng/ml

Instrument :  
 ECD\_Q  
 ClientSampleId :  
 AR1242CCC500

Manual Integrations  
 APPROVED

Reviewed By :Yogesh Patel 09/25/2024  
 Supervised By :Ankita Jodhani 09/25/2024



#20 AR-1242-5

R.T.: 4.582 min  
 Delta R.T.: -0.006 min  
 Response: 91696036  
 Conc: 488.01 ng/ml