

Data Path : Z:\pestpcbsrv\HPCHEM1\ECD\_Q\Data\PQ092424\  
 Data File : PQ068770.D  
 Signal(s) : Signal #1: ECD1A.ch Signal #2: ECD2B.ch  
 Acq On : 25 Sep 2024 05:01  
 Operator : YP\AJ  
 Sample : AR1254CCC500  
 Misc :  
 ALS Vial : 6 Sample Multiplier: 1

**Instrument :**  
 ECD\_Q  
**ClientSampleId :**  
 AR1254CCC500

**Manual Integrations**  
**APPROVED**

Reviewed By :Yogesh Patel 09/25/2024  
 Supervised By :Ankita Jodhani 09/25/2024

Integration File signal 1: autoint1.e  
 Integration File signal 2: autoint2.e  
 Quant Time: Sep 25 07:10:50 2024  
 Quant Method : Z:\pestpcbsrv\HPCHEM1\ECD\_Q\Method\PQ090624.M  
 Quant Title : GC EXTRACTABLES  
 QLast Update : Tue Sep 10 13:06:53 2024  
 Response via : Initial Calibration  
 Integrator: ChemStation

Volume Inj. : 2 µl  
 Signal #1 Phase : ZB-MR1 Signal #2 Phase: ZB-MR2  
 Signal #1 Info : 30Mx0.32mmx 0.50µ Signal #2 Info : 30M x 0.32mm x 0.25µm

Compound	RT#1	RT#2	Resp#1	Resp#2	ng/ml	ng/ml
-----						
System Monitoring Compounds						
1) SA Tetrachlo...	3.436	2.818	333.4E6	355.7E6	46.684	49.942
2) SA Decachlor...	8.608	7.592	190.7E6	310.9E6	43.751	47.072m
Target Compounds						
26) L6 AR-1254-1	5.358	4.580	120.3E6	193.8E6	469.712	520.732
27) L6 AR-1254-2	5.574	4.728	175.0E6	174.0E6	447.353	521.872
28) L6 AR-1254-3	5.928	5.111	180.7E6	259.7E6	444.342	505.539
29) L6 AR-1254-4	6.212	5.337	127.7E6	161.5E6	443.501	513.928
30) L6 AR-1254-5	6.625	5.742	144.7E6	244.6E6	442.580	512.214
-----						

(f)=RT Delta > 1/2 Window (#)=Amounts differ by > 25% (m)=manual int.

Data Path : Z:\pestpcbsrv\HPCHEM1\ECD\_Q\Data\PQ092424\  
 Data File : PQ068770.D  
 Signal(s) : Signal #1: ECD1A.ch Signal #2: ECD2B.ch  
 Acq On : 25 Sep 2024 05:01  
 Operator : YP\AJ  
 Sample : AR1254CCC500  
 Misc :  
 ALS Vial : 6 Sample Multiplier: 1

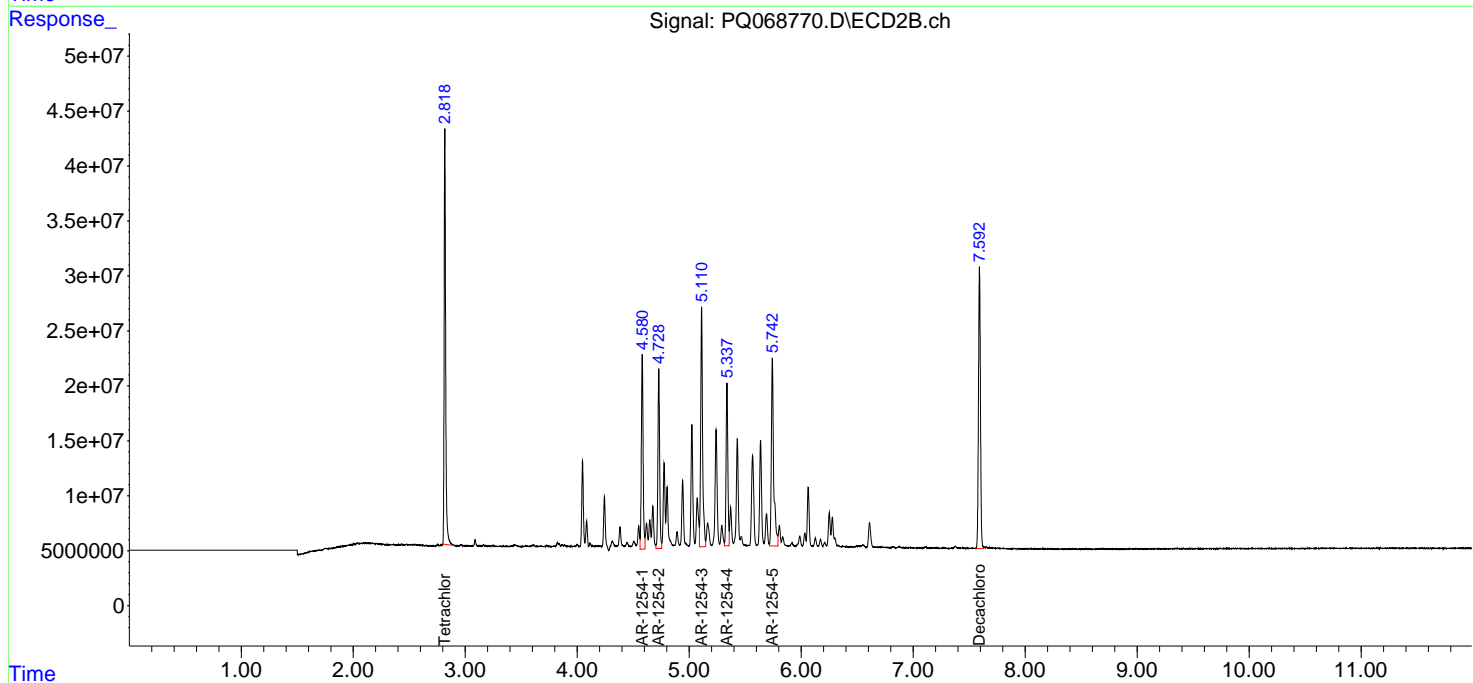
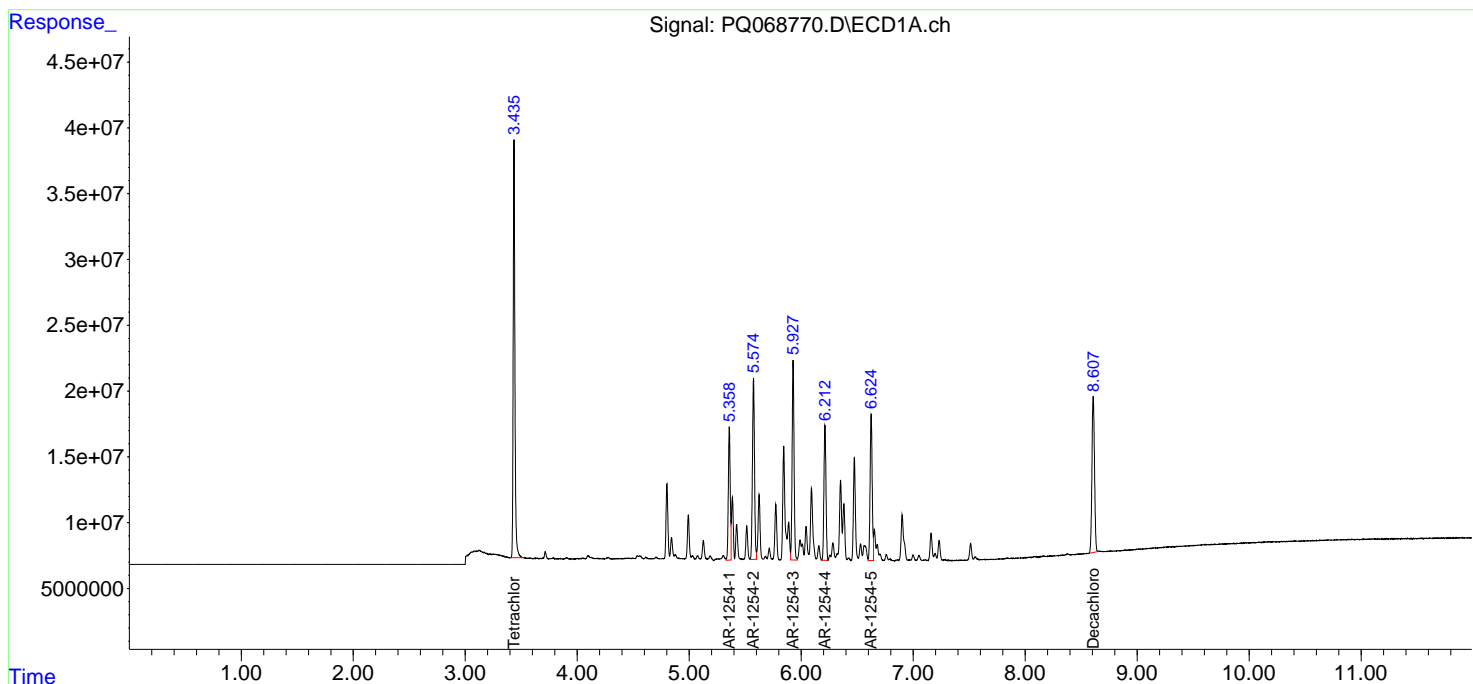
**Instrument :**  
 ECD\_Q  
**ClientSampleId :**  
 AR1254CCC500

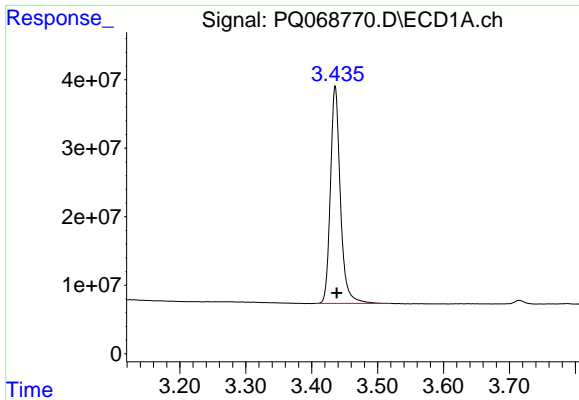
**Manual Integrations**  
**APPROVED**

Reviewed By :Yogesh Patel 09/25/2024  
 Supervised By :Ankita Jodhani 09/25/2024

Integration File signal 1: autoint1.e  
 Integration File signal 2: autoint2.e  
 Quant Time: Sep 25 07:10:50 2024  
 Quant Method : Z:\pestpcbsrv\HPCHEM1\ECD\_Q\Method\PQ090624.M  
 Quant Title : GC EXTRACTABLES  
 QLast Update : Tue Sep 10 13:06:53 2024  
 Response via : Initial Calibration  
 Integrator: ChemStation

Volume Inj. : 2 µl  
 Signal #1 Phase : ZB-MR1 Signal #2 Phase: ZB-MR2  
 Signal #1 Info : 30Mx0.32mmx 0.50µ Signal #2 Info : 30M x 0.32mm x 0.25µm

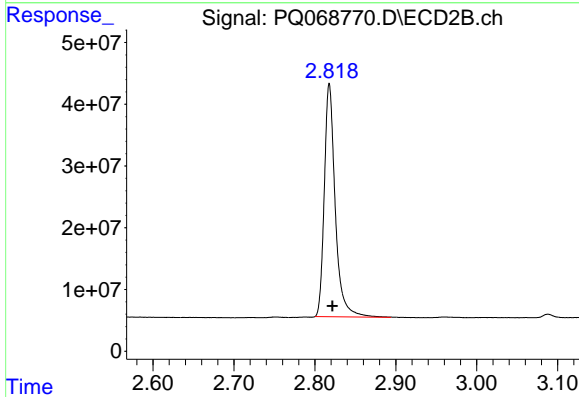




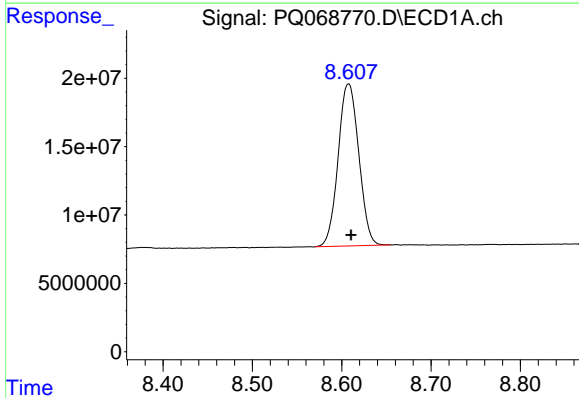
#1 Tetrachloro-m-xylene  
 R.T.: 3.436 min  
 Delta R.T.: -0.002 min  
 Response: 333356121  
 Conc: 46.68 ng/ml

Instrument : ECD\_Q  
 Client Sample Id : AR1254CCC500

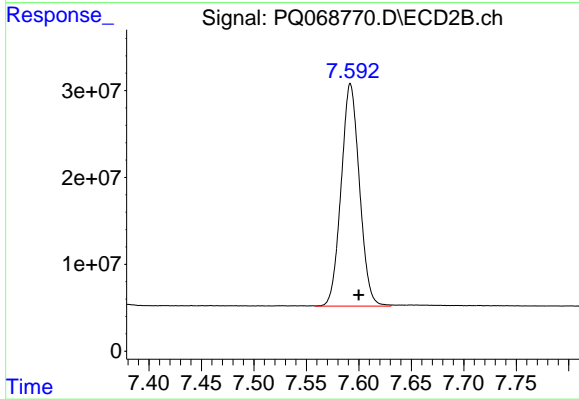
**Manual Integrations**  
**APPROVED**  
 Reviewed By :Yogesh Patel 09/25/2024  
 Supervised By :Ankita Jodhani 09/25/2024



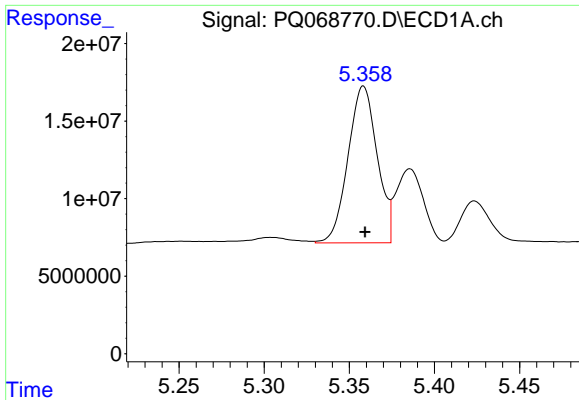
#1 Tetrachloro-m-xylene  
 R.T.: 2.818 min  
 Delta R.T.: -0.004 min  
 Response: 355698674  
 Conc: 49.94 ng/ml



#2 Decachlorobiphenyl  
 R.T.: 8.608 min  
 Delta R.T.: -0.003 min  
 Response: 190678849  
 Conc: 43.75 ng/ml



#2 Decachlorobiphenyl  
 R.T.: 7.592 min  
 Delta R.T.: -0.008 min  
 Response: 310856633  
 Conc: 47.07 ng/ml m



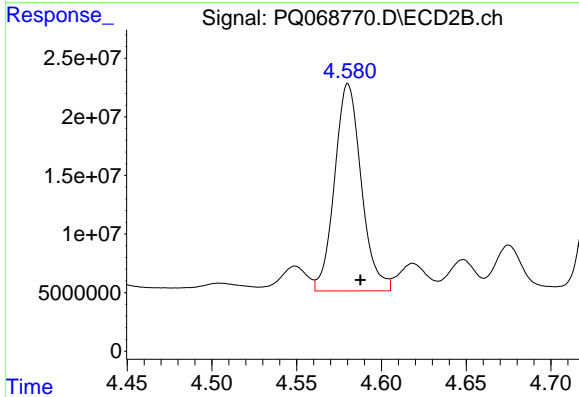
#26 AR-1254-1

R.T.: 5.358 min  
 Delta R.T.: -0.001 min  
 Response: 120331380  
 Conc: 469.71 ng/ml

Instrument :  
 ECD\_Q  
 ClientSampleId :  
 AR1254CCC500

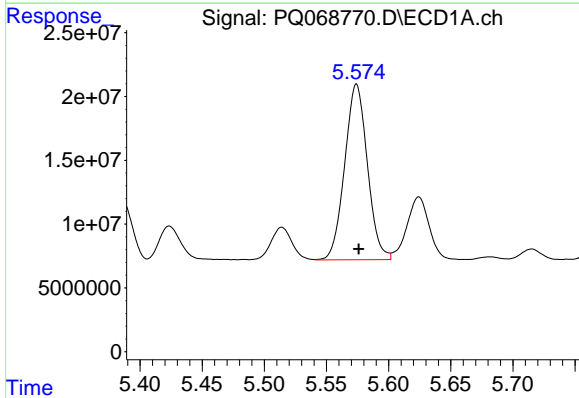
Manual Integrations  
 APPROVED

Reviewed By :Yogesh Patel 09/25/2024  
 Supervised By :Ankita Jodhani 09/25/2024



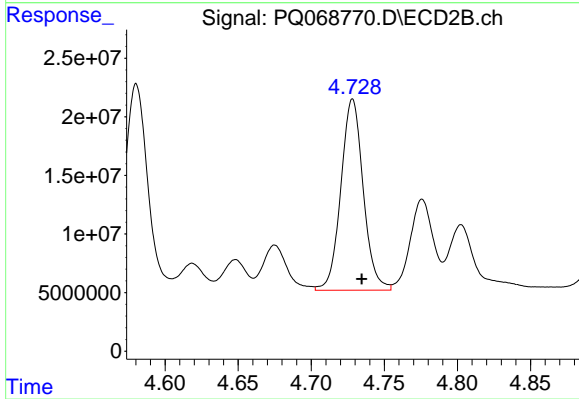
#26 AR-1254-1

R.T.: 4.580 min  
 Delta R.T.: -0.007 min  
 Response: 193842437  
 Conc: 520.73 ng/ml



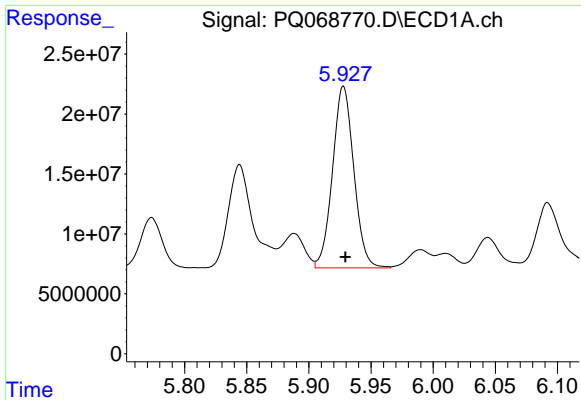
#27 AR-1254-2

R.T.: 5.574 min  
 Delta R.T.: -0.002 min  
 Response: 175032460  
 Conc: 447.35 ng/ml



#27 AR-1254-2

R.T.: 4.728 min  
 Delta R.T.: -0.006 min  
 Response: 174032051  
 Conc: 521.87 ng/ml



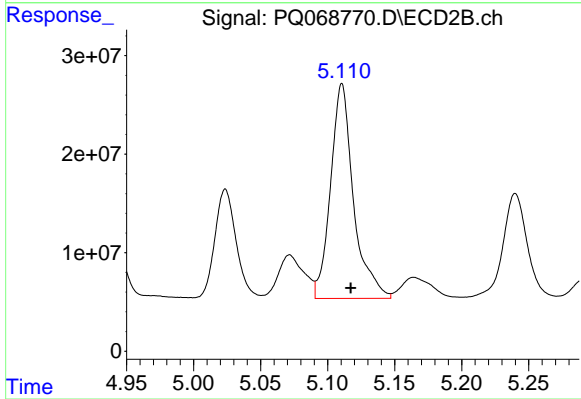
#28 AR-1254-3

R.T.: 5.928 min  
 Delta R.T.: -0.002 min  
 Response: 180701553  
 Conc: 444.34 ng/ml

Instrument :  
 ECD\_Q  
 ClientSampleId :  
 AR1254CCC500

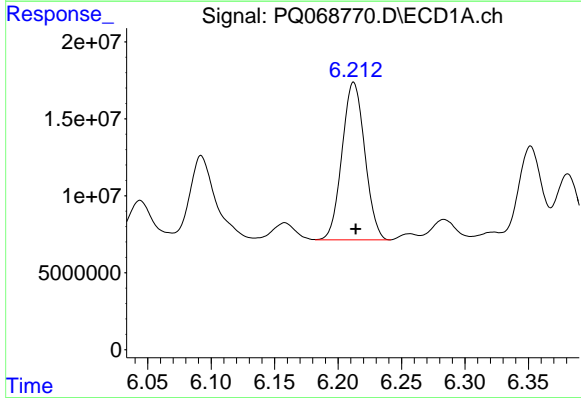
Manual Integrations  
 APPROVED

Reviewed By :Yogesh Patel 09/25/2024  
 Supervised By :Ankita Jodhani 09/25/2024



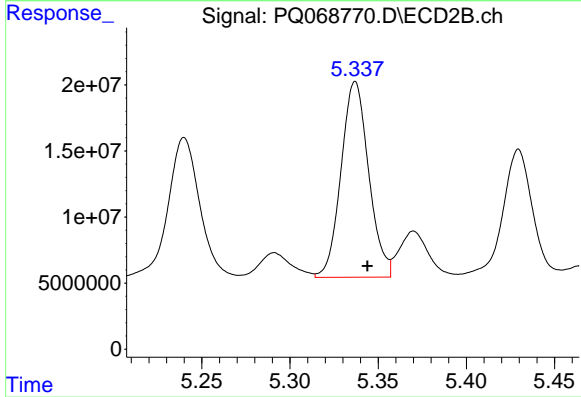
#28 AR-1254-3

R.T.: 5.111 min  
 Delta R.T.: -0.007 min  
 Response: 259723980  
 Conc: 505.54 ng/ml



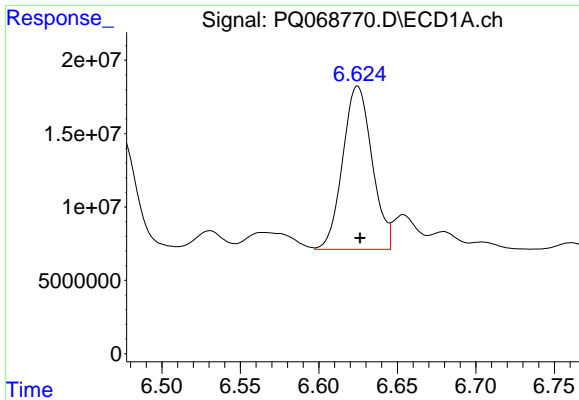
#29 AR-1254-4

R.T.: 6.212 min  
 Delta R.T.: -0.002 min  
 Response: 127741752  
 Conc: 443.50 ng/ml



#29 AR-1254-4

R.T.: 5.337 min  
 Delta R.T.: -0.007 min  
 Response: 161482120  
 Conc: 513.93 ng/ml



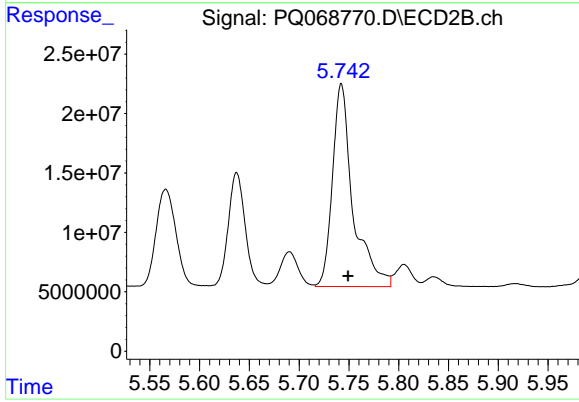
#30 AR-1254-5

R.T.: 6.625 min  
 Delta R.T.: -0.001 min  
 Response: 144707056  
 Conc: 442.58 ng/ml

Instrument :  
 ECD\_Q  
 ClientSampleId :  
 AR1254CCC500

Manual Integrations  
 APPROVED

Reviewed By :Yogesh Patel 09/25/2024  
 Supervised By :Ankita Jodhani 09/25/2024



#30 AR-1254-5

R.T.: 5.742 min  
 Delta R.T.: -0.007 min  
 Response: 244605482  
 Conc: 512.21 ng/ml