

Data Path : Z:\pestpcbsrv\HPCHEM1\ECD\_Q\Data\PQ092424\  
 Data File : PQ068778.D  
 Signal(s) : Signal #1: ECD1A.ch Signal #2: ECD2B.ch  
 Acq On : 25 Sep 2024 07:56  
 Operator : YP\AJ  
 Sample : AR1660CCC500  
 Misc :  
 ALS Vial : 3 Sample Multiplier: 1

**Instrument :**  
 ECD\_Q  
**ClientSampleId :**  
 AR1660CCC500

**Manual Integrations**  
**APPROVED**

Reviewed By :Yogesh Patel 09/25/2024  
 Supervised By :Ankita Jodhani 09/25/2024

Integration File signal 1: autoint1.e  
 Integration File signal 2: autoint2.e  
 Quant Time: Sep 25 08:20:28 2024  
 Quant Method : Z:\pestpcbsrv\HPCHEM1\ECD\_Q\Method\PQ090624.M  
 Quant Title : GC EXTRACTABLES  
 QLast Update : Tue Sep 10 13:06:53 2024  
 Response via : Initial Calibration  
 Integrator: ChemStation

Volume Inj. : 2 µl  
 Signal #1 Phase : ZB-MR1 Signal #2 Phase: ZB-MR2  
 Signal #1 Info : 30Mx0.32mmx 0.50µ Signal #2 Info : 30M x 0.32mm x 0.25µm

Compound	RT#1	RT#2	Resp#1	Resp#2	ng/ml	ng/ml
-----						
System Monitoring Compounds						
1) SA Tetrachlo...	3.436	2.818	341.1E6	365.5E6	47.769	51.312
2) SA Decachlor...	8.608	7.592	191.0E6	306.5E6	43.836	46.410m
Target Compounds						
3) L1 AR-1016-1	4.536	3.822	110.2E6	125.1E6	471.513	526.836m
4) L1 AR-1016-2	4.555	3.837	168.2E6	184.7E6	458.131	511.164m
5) L1 AR-1016-3	4.613	3.999	105.0E6	100.1E6	464.372	515.362
6) L1 AR-1016-4	4.706	4.047	87105629	84953428	457.503	526.037
7) L1 AR-1016-5	4.991	4.243	82493822	98666976	466.577	510.830
31) L7 AR-1260-1	6.092	5.239	145.2E6	195.4E6	436.718	508.951
32) L7 AR-1260-2	6.351	5.429	166.0E6	235.0E6	442.849	515.616
33) L7 AR-1260-3	6.705	5.570	102.6E6	222.6E6	436.729	510.794
34) L7 AR-1260-4	6.921	6.032	122.5E6	160.7E6	442.139	500.136
35) L7 AR-1260-5	7.233	6.278	226.8E6	355.3E6	424.423	487.537
-----						

(f)=RT Delta > 1/2 Window (#)=Amounts differ by > 25% (m)=manual int.

Data Path : Z:\pestpcbsrv\HPCHEM1\ECD\_Q\Data\PQ092424\  
 Data File : PQ068778.D  
 Signal(s) : Signal #1: ECD1A.ch Signal #2: ECD2B.ch  
 Acq On : 25 Sep 2024 07:56  
 Operator : YP\AJ  
 Sample : AR1660CCC500  
 Misc :  
 ALS Vial : 3 Sample Multiplier: 1

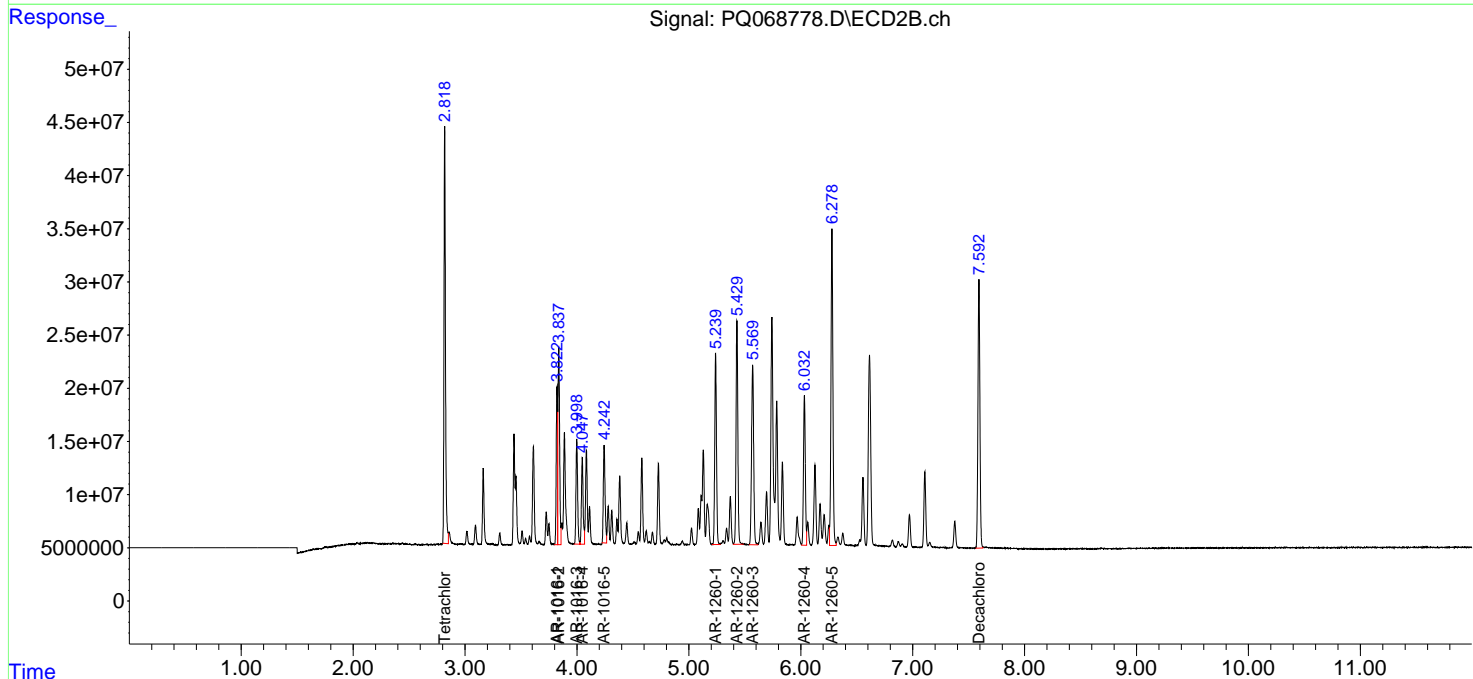
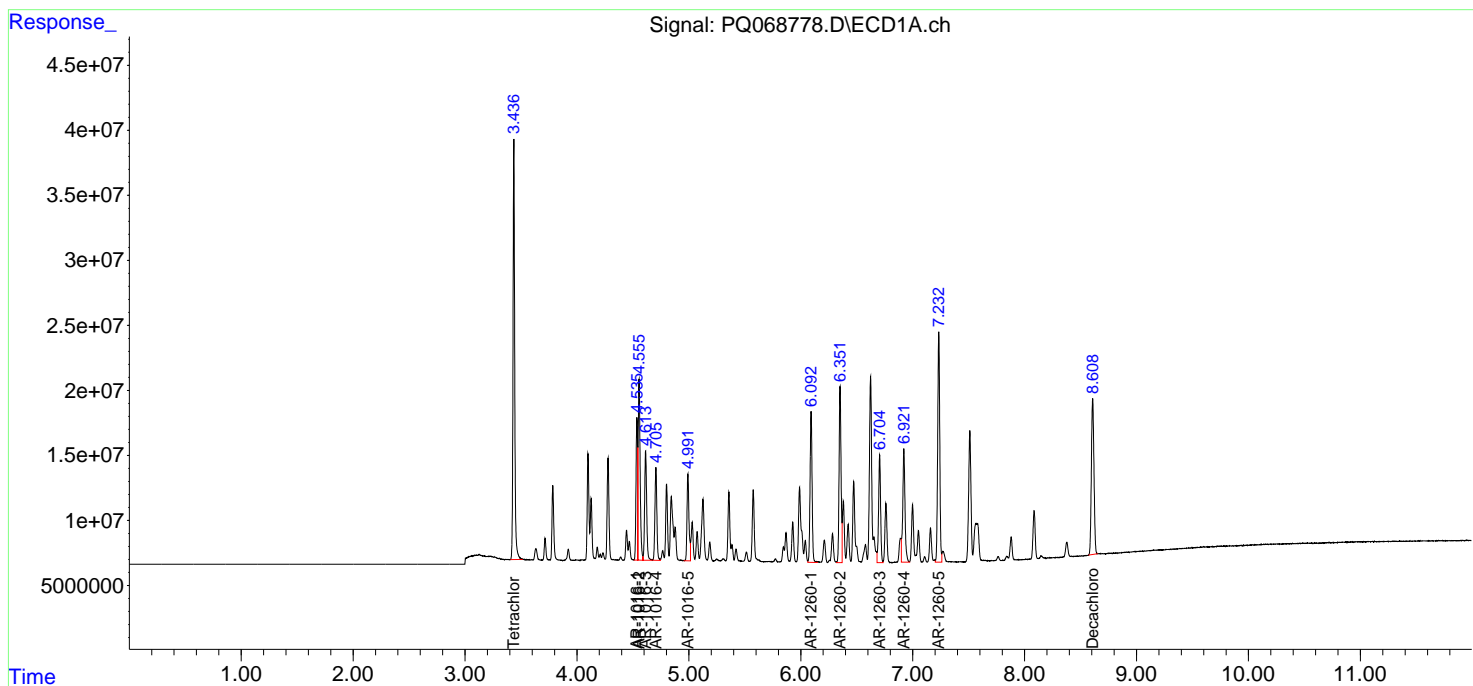
Instrument :  
 ECD\_Q  
 ClientSampleId :  
 AR1660CCC500

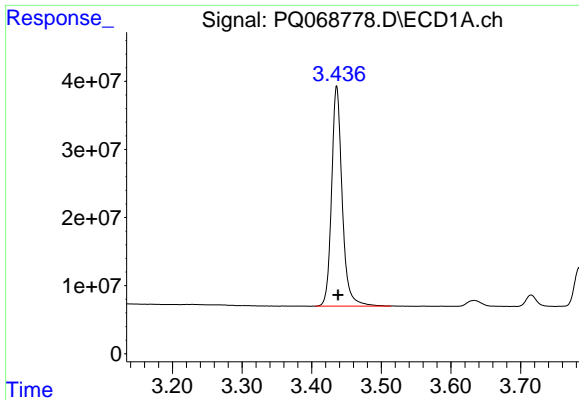
Manual Integrations  
 APPROVED

Reviewed By :Yogesh Patel 09/25/2024  
 Supervised By :Ankita Jodhani 09/25/2024

Integration File signal 1: autoint1.e  
 Integration File signal 2: autoint2.e  
 Quant Time: Sep 25 08:20:28 2024  
 Quant Method : Z:\pestpcbsrv\HPCHEM1\ECD\_Q\Method\PQ090624.M  
 Quant Title : GC EXTRACTABLES  
 QLast Update : Tue Sep 10 13:06:53 2024  
 Response via : Initial Calibration  
 Integrator: ChemStation

Volume Inj. : 2 µl  
 Signal #1 Phase : ZB-MR1 Signal #2 Phase: ZB-MR2  
 Signal #1 Info : 30Mx0.32mmx 0.50µ Signal #2 Info : 30M x 0.32mm x 0.25µm





#1 Tetrachloro-m-xylene

R.T.: 3.436 min  
 Delta R.T.: -0.002 min  
 Response: 341099069  
 Conc: 47.77 ng/ml

Instrument :

ECD\_Q

ClientSampleId :

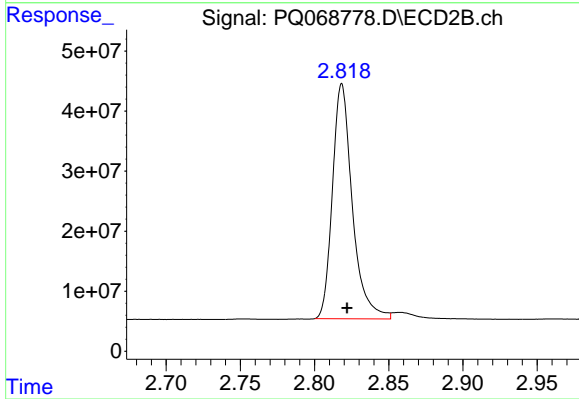
AR1660CCC500

Manual Integrations

APPROVED

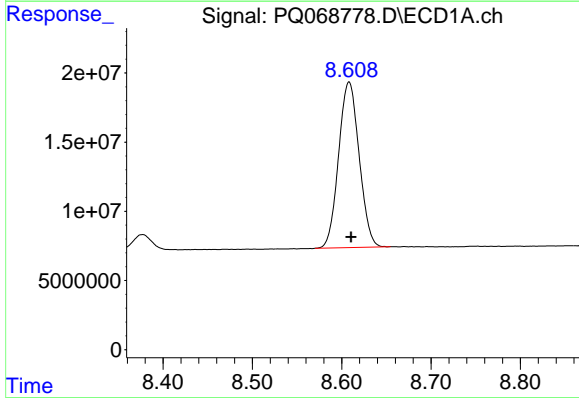
Reviewed By :Yogesh Patel 09/25/2024

Supervised By :Ankita Jodhani 09/25/2024



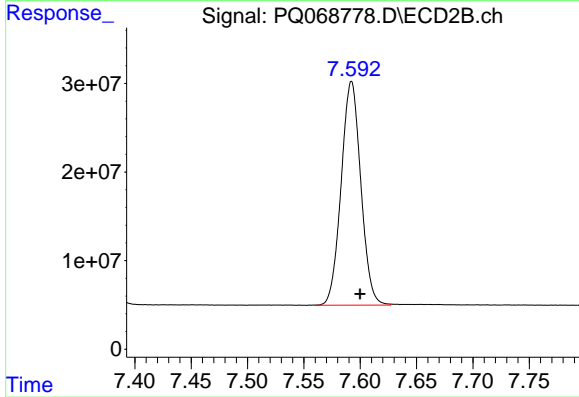
#1 Tetrachloro-m-xylene

R.T.: 2.818 min  
 Delta R.T.: -0.003 min  
 Response: 365458565  
 Conc: 51.31 ng/ml



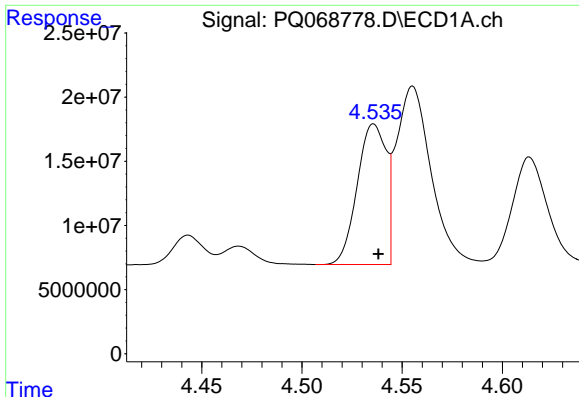
#2 Decachlorobiphenyl

R.T.: 8.608 min  
 Delta R.T.: -0.002 min  
 Response: 191049286  
 Conc: 43.84 ng/ml



#2 Decachlorobiphenyl

R.T.: 7.592 min  
 Delta R.T.: -0.008 min  
 Response: 306482432  
 Conc: 46.41 ng/ml m



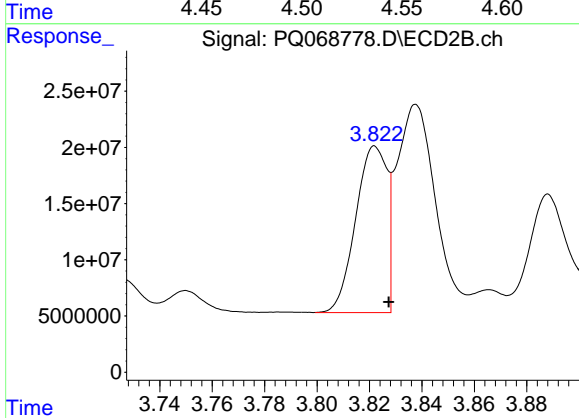
#3 AR-1016-1

R.T.: 4.536 min  
 Delta R.T.: -0.002 min  
 Response: 110176051  
 Conc: 471.51 ng/ml

Instrument :  
 ECD\_Q  
 ClientSampleId :  
 AR1660CCC500

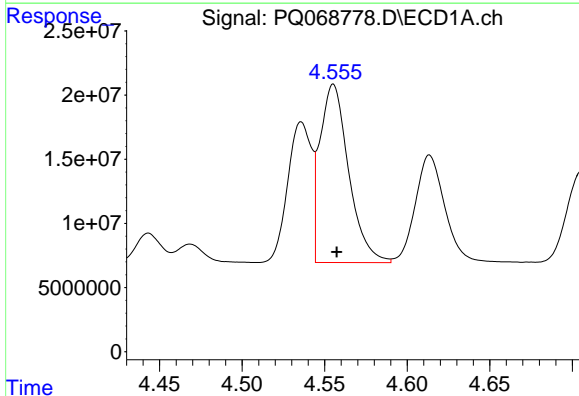
Manual Integrations  
 APPROVED

Reviewed By :Yogesh Patel 09/25/2024  
 Supervised By :Ankita Jodhani 09/25/2024



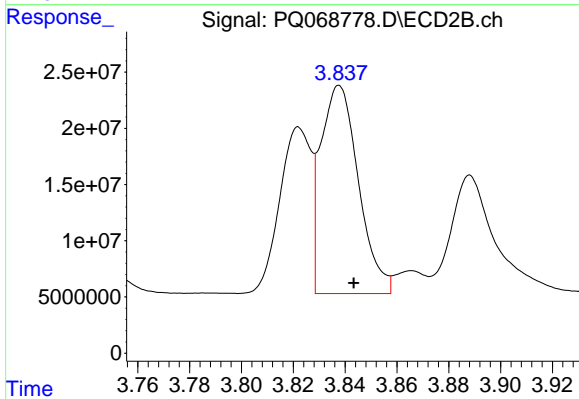
#3 AR-1016-1

R.T.: 3.822 min  
 Delta R.T.: -0.006 min  
 Response: 125107636  
 Conc: 526.84 ng/ml m



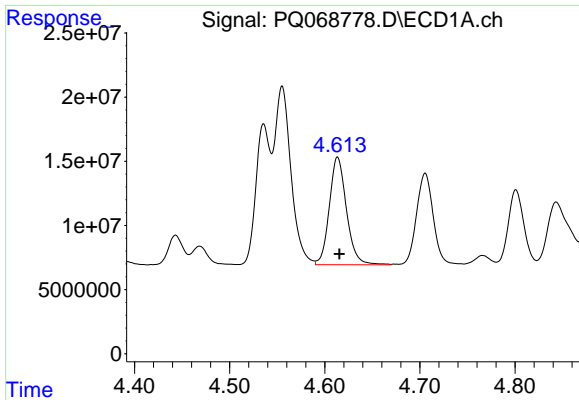
#4 AR-1016-2

R.T.: 4.555 min  
 Delta R.T.: -0.002 min  
 Response: 168205732  
 Conc: 458.13 ng/ml



#4 AR-1016-2

R.T.: 3.837 min  
 Delta R.T.: -0.006 min  
 Response: 184710376  
 Conc: 511.16 ng/ml m



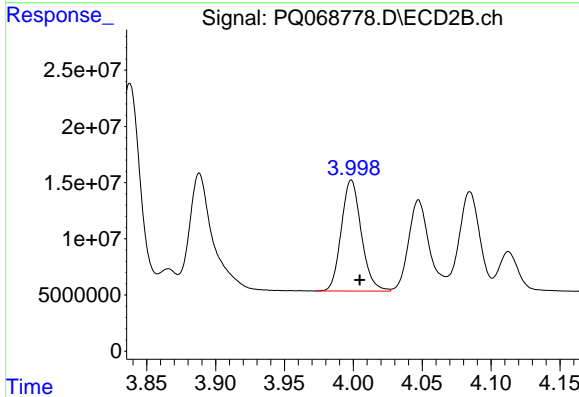
#5 AR-1016-3

R.T.: 4.613 min  
 Delta R.T.: -0.002 min  
 Response: 104963944  
 Conc: 464.37 ng/ml

Instrument :  
 ECD\_Q  
 ClientSampleId :  
 AR1660CCC500

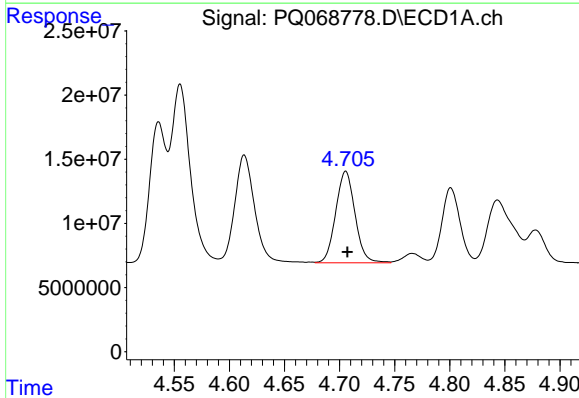
Manual Integrations  
 APPROVED

Reviewed By :Yogesh Patel 09/25/2024  
 Supervised By :Ankita Jodhani 09/25/2024



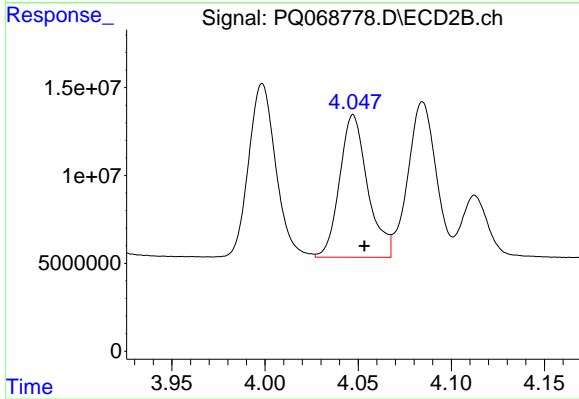
#5 AR-1016-3

R.T.: 3.999 min  
 Delta R.T.: -0.006 min  
 Response: 100100129  
 Conc: 515.36 ng/ml



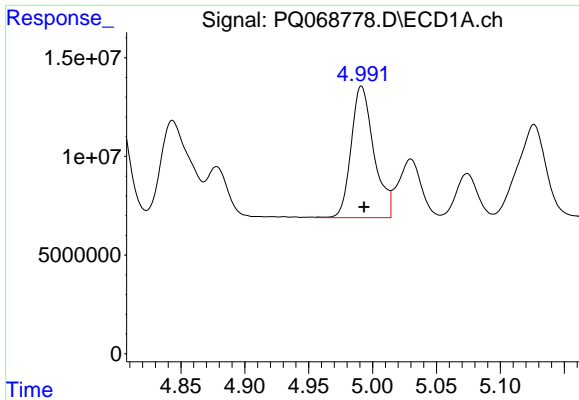
#6 AR-1016-4

R.T.: 4.706 min  
 Delta R.T.: -0.001 min  
 Response: 87105629  
 Conc: 457.50 ng/ml



#6 AR-1016-4

R.T.: 4.047 min  
 Delta R.T.: -0.006 min  
 Response: 84953428  
 Conc: 526.04 ng/ml



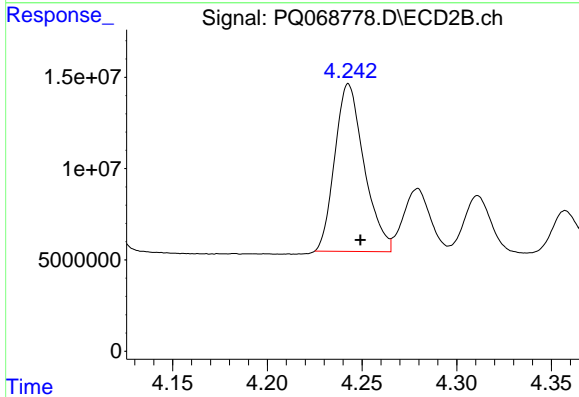
#7 AR-1016-5

R.T.: 4.991 min  
 Delta R.T.: -0.002 min  
 Response: 82493822  
 Conc: 466.58 ng/ml

Instrument :  
 ECD\_Q  
 ClientSampleId :  
 AR1660CCC500

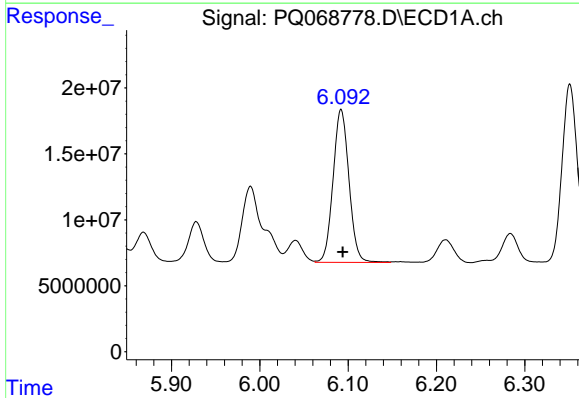
Manual Integrations  
 APPROVED

Reviewed By :Yogesh Patel 09/25/2024  
 Supervised By :Ankita Jodhani 09/25/2024



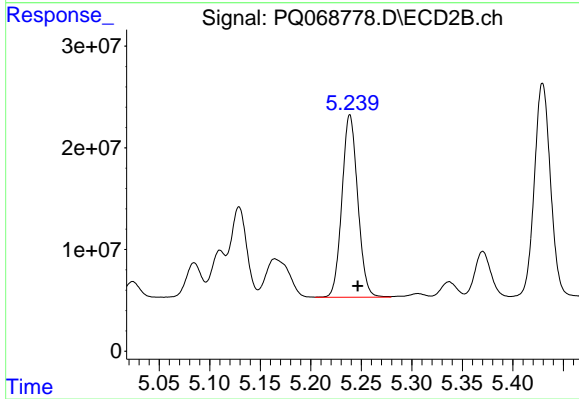
#7 AR-1016-5

R.T.: 4.243 min  
 Delta R.T.: -0.006 min  
 Response: 98666976  
 Conc: 510.83 ng/ml



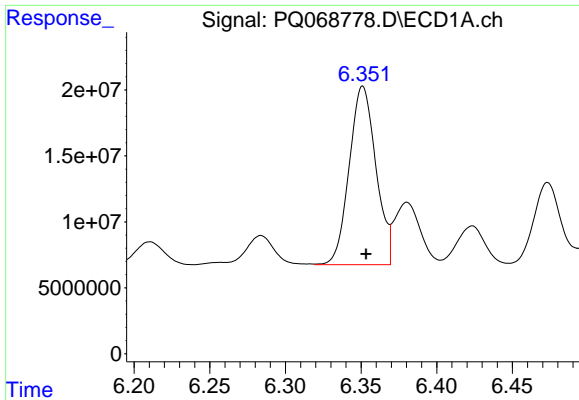
#31 AR-1260-1

R.T.: 6.092 min  
 Delta R.T.: -0.002 min  
 Response: 145230837  
 Conc: 436.72 ng/ml



#31 AR-1260-1

R.T.: 5.239 min  
 Delta R.T.: -0.008 min  
 Response: 195429371  
 Conc: 508.95 ng/ml



#32 AR-1260-2

R.T.: 6.351 min  
 Delta R.T.: -0.002 min  
 Response: 165991865  
 Conc: 442.85 ng/ml

Instrument :

ECD\_Q

Client Sample Id :

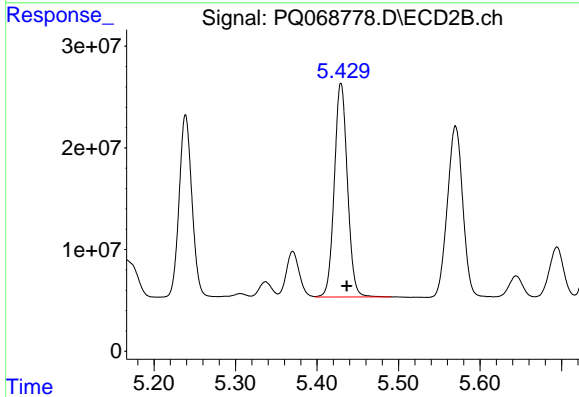
AR1660CCC500

Manual Integrations

APPROVED

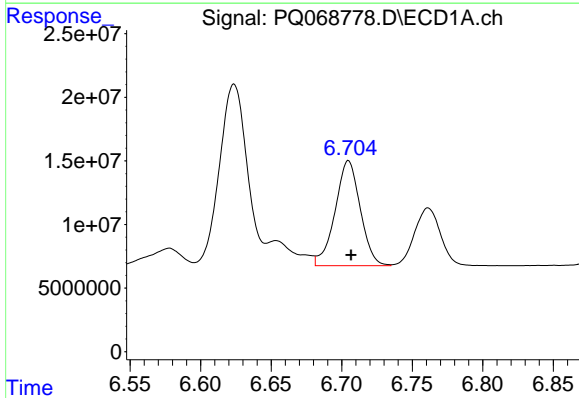
Reviewed By :Yogesh Patel 09/25/2024

Supervised By :Ankita Jodhani 09/25/2024



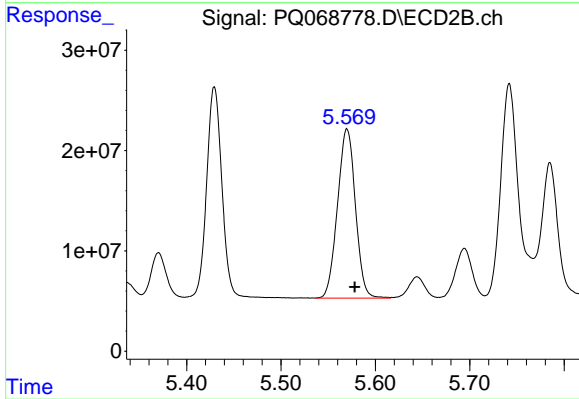
#32 AR-1260-2

R.T.: 5.429 min  
 Delta R.T.: -0.007 min  
 Response: 235016501  
 Conc: 515.62 ng/ml



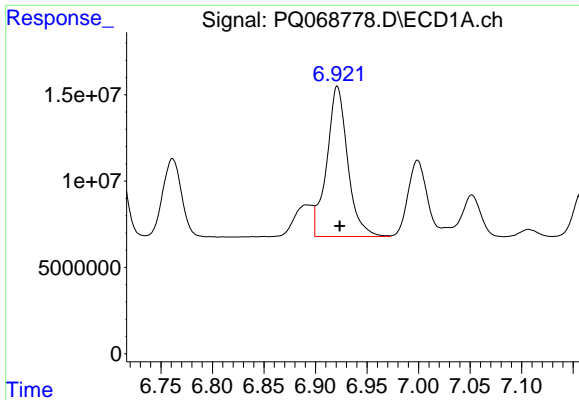
#33 AR-1260-3

R.T.: 6.705 min  
 Delta R.T.: -0.002 min  
 Response: 102636024  
 Conc: 436.73 ng/ml



#33 AR-1260-3

R.T.: 5.570 min  
 Delta R.T.: -0.008 min  
 Response: 222611686  
 Conc: 510.79 ng/ml



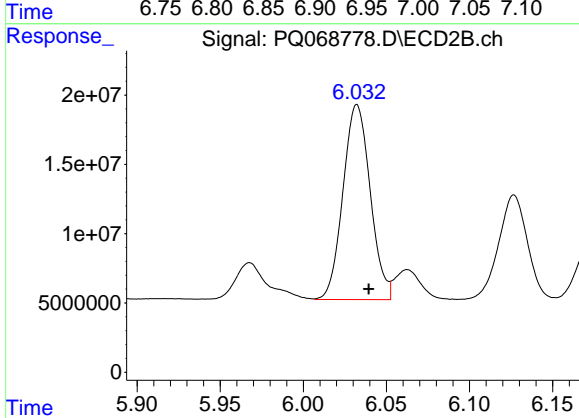
#34 AR-1260-4

R.T.: 6.921 min  
 Delta R.T.: -0.002 min  
 Response: 122519745  
 Conc: 442.14 ng/ml

Instrument :  
 ECD\_Q  
 ClientSampleId :  
 AR1660CCC500

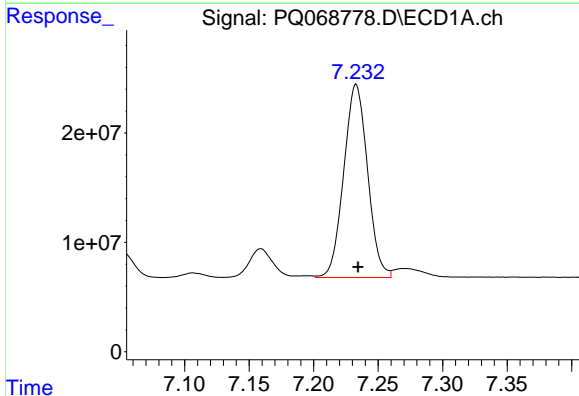
Manual Integrations  
 APPROVED

Reviewed By :Yogesh Patel 09/25/2024  
 Supervised By :Ankita Jodhani 09/25/2024



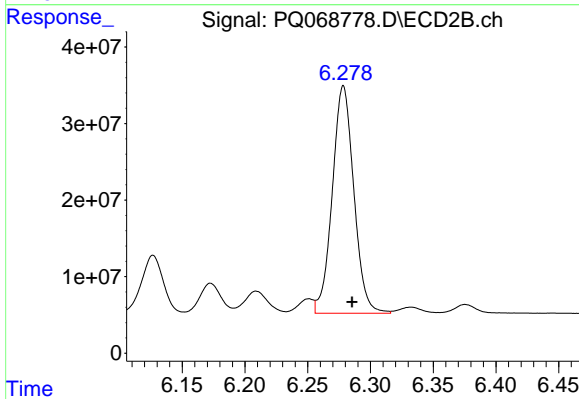
#34 AR-1260-4

R.T.: 6.032 min  
 Delta R.T.: -0.007 min  
 Response: 160691055  
 Conc: 500.14 ng/ml



#35 AR-1260-5

R.T.: 7.233 min  
 Delta R.T.: -0.002 min  
 Response: 226836629  
 Conc: 424.42 ng/ml



#35 AR-1260-5

R.T.: 6.278 min  
 Delta R.T.: -0.007 min  
 Response: 355282628  
 Conc: 487.54 ng/ml