

Data Path : Z:\pestpcbsrv\HPCHEM1\ECD_Q\Data\PQ092520\
 Data File : PQ050020.D
 Signal(s) : Signal #1: ECD1A.ch Signal #2: ECD2B.ch
 Acq On : 24 Sep 2020 11:29
 Operator : DD\AJ
 Sample : L1955-07
 Misc :
 ALS Vial : 10 Sample Multiplier: 1

Instrument :
 ECD_Q
 ClientSampleId :
 MDL-WATER-01

Integration File signal 1: autoint1.e
 Integration File signal 2: autoint2.e
 Quant Time: Sep 25 05:48:34 2020
 Quant Method : Z:\pestpcbsrv\HPCHEM1\ECD_Q\Method\PQ092420CLP.M
 Quant Title : GC EXTRACTABLES
 QLast Update : Thu Sep 24 08:00:48 2020
 Response via : Initial Calibration
 Integrator: ChemStation

Volume Inj. : 1 µl
 Signal #1 Phase : ZB MR1 Signal #2 Phase: ZB MR2
 Signal #1 Info : 30Mx0.32mmx 0.5µm Signal #2 Info : 30M x 0.32mm x 0.25µm

Compound	RT#1	RT#2	Resp#1	Resp#2	ng/ml	ng/ml
----------	------	------	--------	--------	-------	-------

System Monitoring Compounds

1) SA Tetrachlo...	5.214	4.271	170.2E6	59853040	17.194	16.979
2) SA Decachlor...	11.410	9.621	275.0E6	240.9E6	40.512	44.790

Target Compounds

3) L1 AR-1016-1	6.544	5.531	10484511	4205512	32.448	25.302
4) L1 AR-1016-2	6.568	5.551	14562408	5291084	30.978	23.684
5) L1 AR-1016-3	6.635	5.744	9139426	3131287	30.106	26.428
6) L1 AR-1016-4	6.744	5.795	7724979	2726902	31.773	28.894
7) L1 AR-1016-5	7.058	6.027	7133562	2467098	32.312	19.956 #
9) L2 AR-1221-2	5.568	4.627	2679617	876360	31.831	28.796
10) L2 AR-1221-3	5.657	4.718	4743709	1649071	17.532	15.732
11) L3 AR-1232-1	5.657	4.718	4743709	1649071	22.664	20.484
12) L3 AR-1232-2	6.248	5.551	6814730	5291084	64.121	55.768
13) L3 AR-1232-3	6.568	5.744	14562408	3131287	67.319	63.222
14) L3 AR-1232-4	6.744	5.840	7724979	3280752	73.300	73.615
15) L3 AR-1232-5	6.837	6.027	6865574	2467098	91.138	48.550 #
16) L4 AR-1242-1	6.544	5.531	10484511	4205512	38.873	33.090
17) L4 AR-1242-2	6.568	5.551	14562408	5291084	38.565	30.465
18) L4 AR-1242-3	6.635	5.744	9139426	3131287	38.363	33.887
19) L4 AR-1242-4	6.744	5.840	7724979	3280752	39.866	36.661
20) L4 AR-1242-5	7.486f	6.403	1270395	3950807	6.595	29.637 #
21) L5 AR-1248-1	6.544	5.531	10484511	4205512	48.221	41.073
22) L5 AR-1248-2	6.837	5.795	6865574	2726902	24.790	20.918
23) L5 AR-1248-3	7.058	5.840	7133562	3280752	23.736	24.732
24) L5 AR-1248-4	7.486	6.027	1270395	2467098	3.798	14.942 #
25) L5 AR-1248-5	7.486f	6.429	1270395	3854532	4.036	21.266 #
26) L6 AR-1254-1	7.460	6.403	13559430	3950807	41.107	14.257 #
27) L6 AR-1254-2	7.682	6.562	4905792	5020529	10.081	20.299 #
28) L6 AR-1254-3	8.070	7.003	2230976	7153186	4.589	17.440 #
29) L6 AR-1254-4	8.365	7.219	597039	836901	1.574	2.767 #
30) L6 AR-1254-5	8.797	7.650	13631587	10497170	36.477	26.175 #
31) L7 AR-1260-1	8.235	7.121	11721334	7507342	35.991	30.636
32) L7 AR-1260-2	8.501	7.316	12532147	10352091	32.380	29.353
33) L7 AR-1260-3	8.867	7.473	9720776	9722337	32.374	32.265
34) L7 AR-1260-4	9.111	7.955	9827123	7472093	30.483	27.405
35) L7 AR-1260-5	9.459	8.202	21069590	19886170	31.398	25.798
36) L8 AR-1262-1	8.867	7.650	9720776	10497170	22.287	50.551 #
37) L8 AR-1262-2	9.459	8.202	21069590	19886170	27.336	22.414
38) L8 AR-1262-3	9.784	8.490	2624759	7318747	7.172	19.844 #
39) L8 AR-1262-4	9.876	8.554	5651042	17223305	12.774	26.970 #
40) L8 AR-1262-5	10.608	9.058	7449429	7142512	21.667	21.407
41) L9 AR-1268-1	9.784	8.490	2624759	7318747	2.731	6.526 #
42) L9 AR-1268-2	9.876	8.554	5651042	17223305	6.142	17.743 #
43) L9 AR-1268-3	0.000	8.763	0	1121351	N.D.	1.351 #

Data Path : Z:\pestpcbsrv\HPCHEM1\ECD_Q\Data\PQ092520\
 Data File : PQ050020.D
 Signal(s) : Signal #1: ECD1A.ch Signal #2: ECD2B.ch
 Acq On : 24 Sep 2020 11:29
 Operator : DD\AJ
 Sample : L1955-07
 Misc :
 ALS Vial : 10 Sample Multiplier: 1

Instrument :
 ECD_Q
 ClientSampleId :
 MDL-WATER-01

Integration File signal 1: autoint1.e
 Integration File signal 2: autoint2.e
 Quant Time: Sep 25 05:48:34 2020
 Quant Method : Z:\pestpcbsrv\HPCHEM1\ECD_Q\Method\PQ092420CLP.M
 Quant Title : GC EXTRACTABLES
 QLast Update : Thu Sep 24 08:00:48 2020
 Response via : Initial Calibration
 Integrator: ChemStation

Volume Inj. : 1 µl
 Signal #1 Phase : ZB MR1 Signal #2 Phase: ZB MR2
 Signal #1 Info : 30Mx0.32mmx 0.5µm Signal #2 Info : 30M x 0.32mm x 0.25µm

	Compound	RT#1	RT#2	Resp#1	Resp#2	ng/ml	ng/ml
44)	L9 AR-1268-4	10.608	9.058	7449429	7142512	19.265	18.758
45)	L9 AR-1268-5	11.052	9.360	2529720	2985827	0.985	1.163

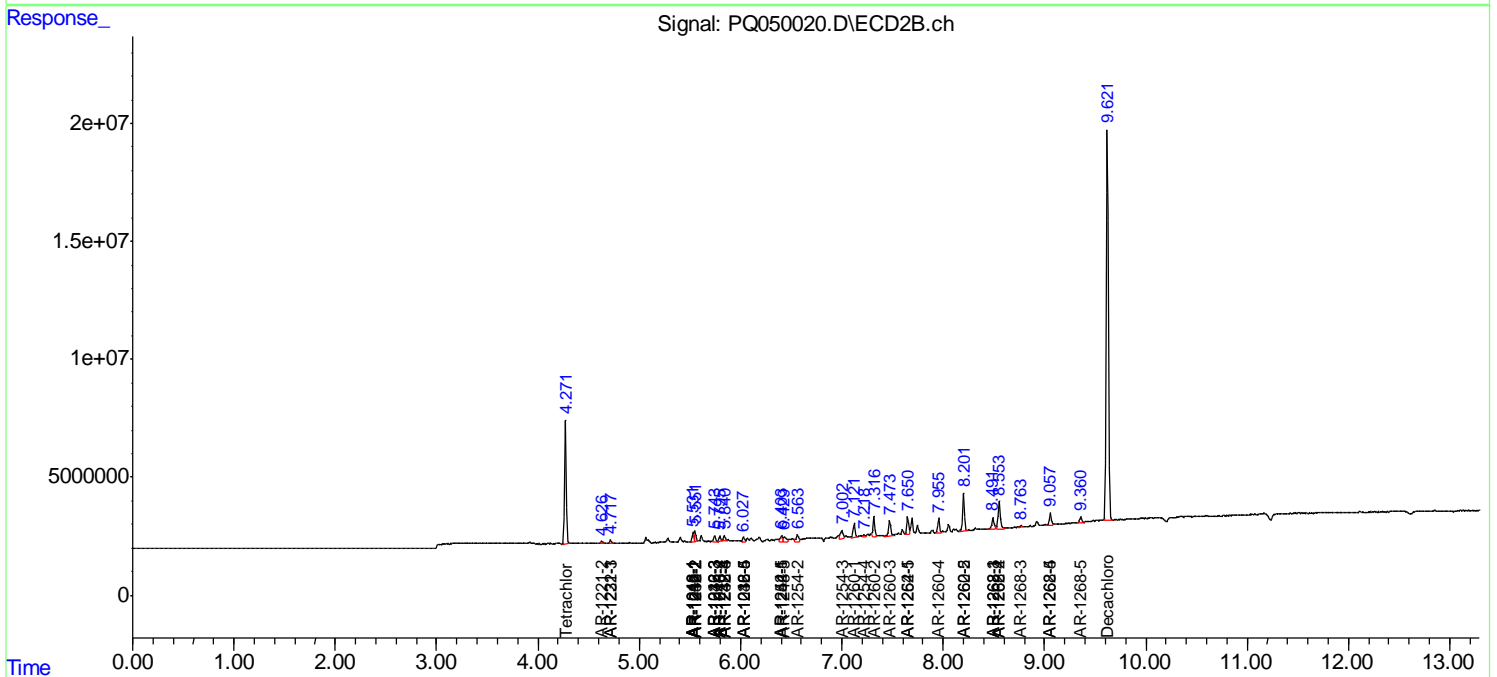
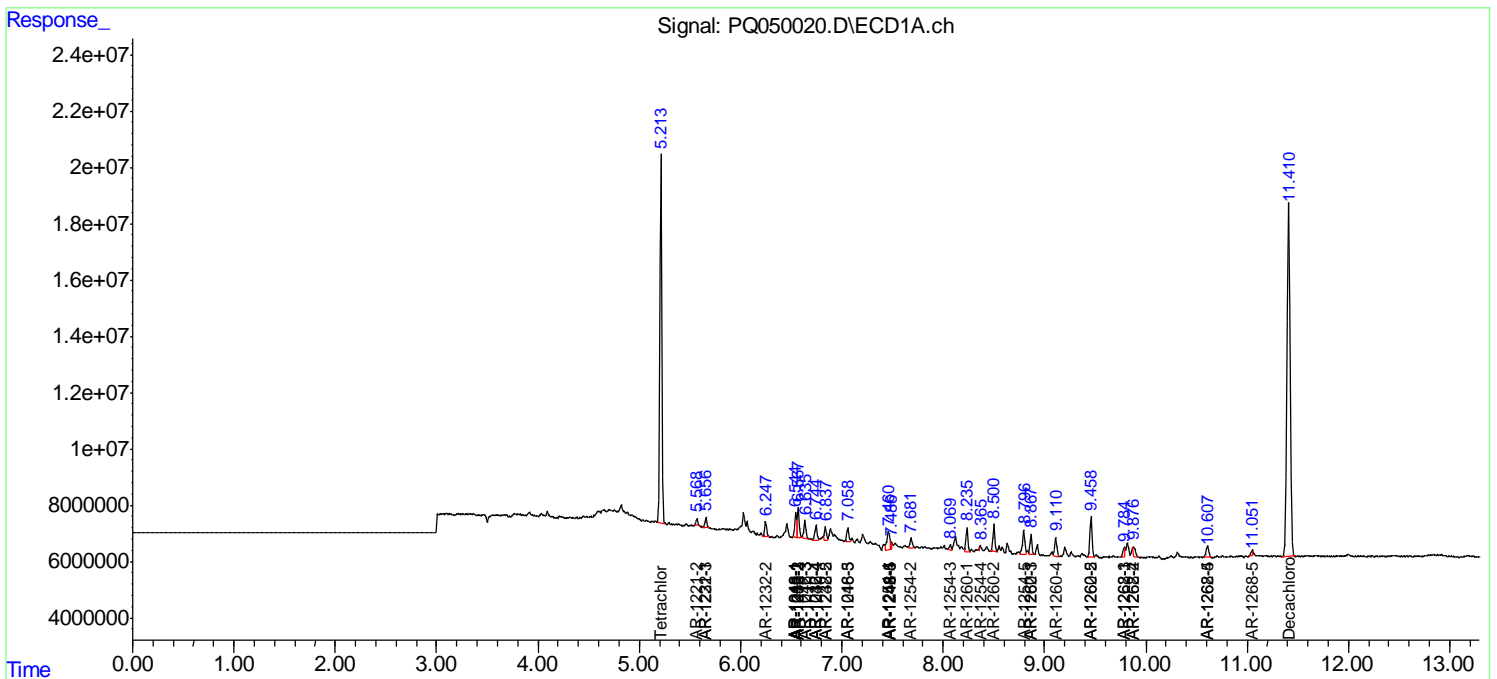
(f)=RT Delta > 1/2 Window (#)=Amounts differ by > 25% (m)=manual int.

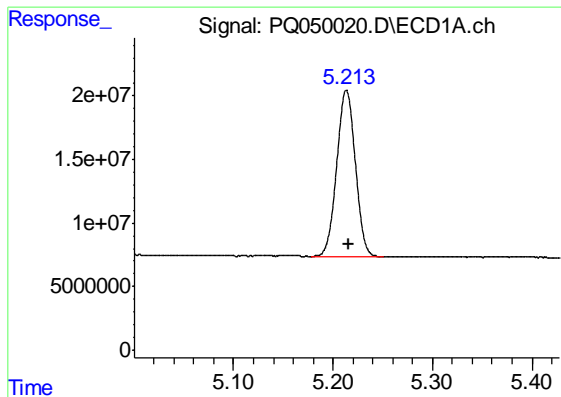
Data Path : Z:\pestpcbsrv\HPCHEM1\ECD_Q\Data\PQ092520\
 Data File : PQ050020.D
 Signal(s) : Signal #1: ECD1A.ch Signal #2: ECD2B.ch
 Acq On : 24 Sep 2020 11:29
 Operator : DD\AJ
 Sample : L1955-07
 Misc :
 ALS Vial : 10 Sample Multiplier: 1

Instrument :
 ECD_Q
Client Sampled :
 MDL-WATER-01

Integration File signal 1: autoint1.e
 Integration File signal 2: autoint2.e
 Quant Time: Sep 25 05:48:34 2020
 Quant Method : Z:\pestpcbsrv\HPCHEM1\ECD_Q\Method\PQ092420CLP.M
 Quant Title : GC EXTRACTABLES
 QLast Update : Thu Sep 24 08:00:48 2020
 Response via : Initial Calibration
 Integrator: ChemStation

Volume Inj. : 1 µl
 Signal #1 Phase : ZB MR1 Signal #2 Phase: ZB MR2
 Signal #1 Info : 30Mx0.32mmx 0.5µm Signal #2 Info : 30M x 0.32mm x 0.25µm

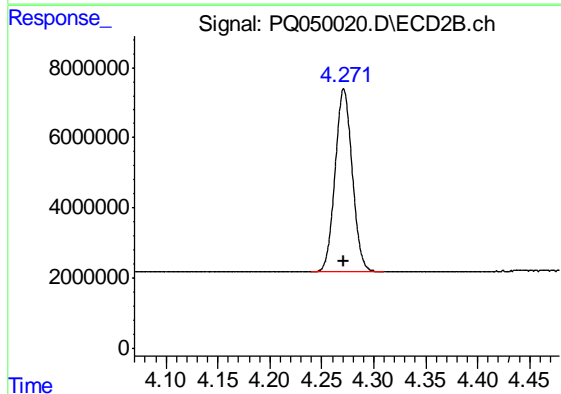




#1 Tetrachloro-m-xylene

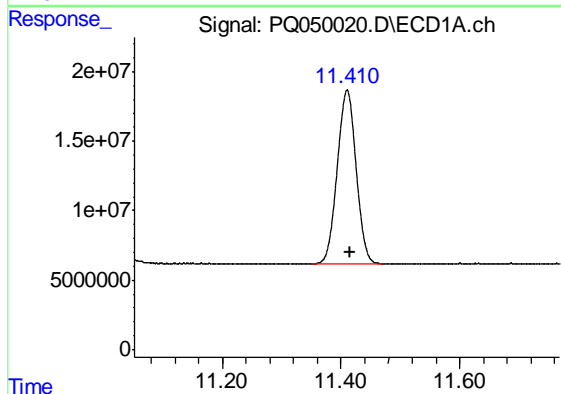
R.T.: 5.214 min
 Delta R.T.: -0.002 min
 Response: 170211929
 Conc: 17.19 ng/ml

Instrument :
 ECD_Q
 ClientSampleId :
 MDL-WATER-01



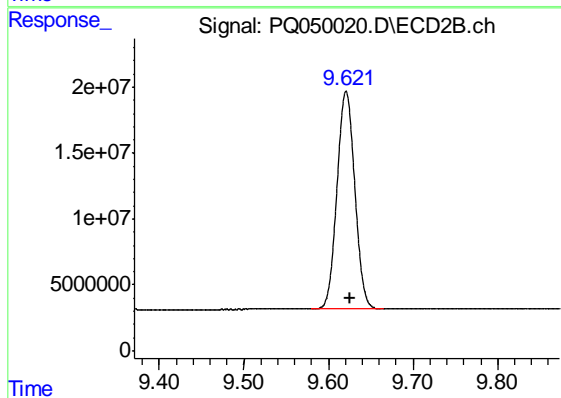
#1 Tetrachloro-m-xylene

R.T.: 4.271 min
 Delta R.T.: 0.000 min
 Response: 59853040
 Conc: 16.98 ng/ml



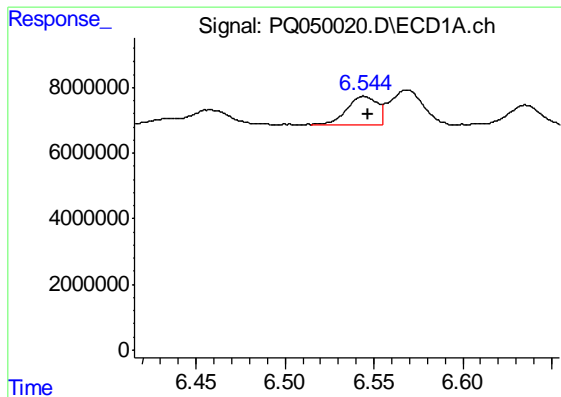
#2 Decachlorobiphenyl

R.T.: 11.410 min
 Delta R.T.: -0.006 min
 Response: 275031834
 Conc: 40.51 ng/ml



#2 Decachlorobiphenyl

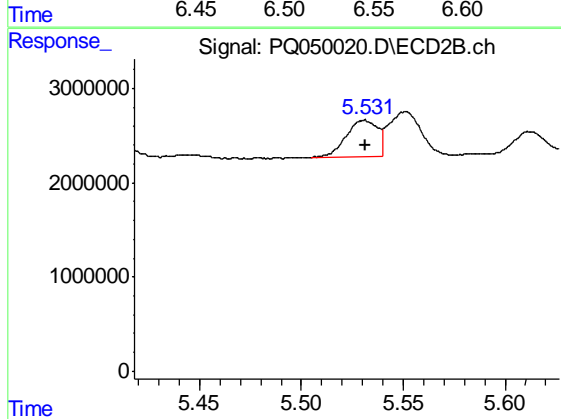
R.T.: 9.621 min
 Delta R.T.: -0.005 min
 Response: 240923182
 Conc: 44.79 ng/ml



#3 AR-1016-1

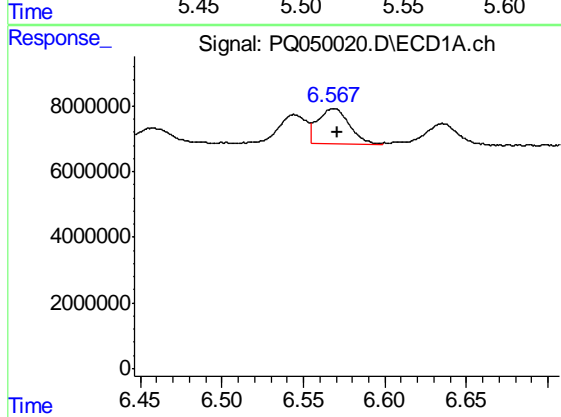
R.T.: 6.544 min
 Delta R.T.: -0.002 min
 Response: 10484511
 Conc: 32.45 ng/ml

Instrument :
 ECD_Q
 ClientSampleId :
 MDL-WATER-01



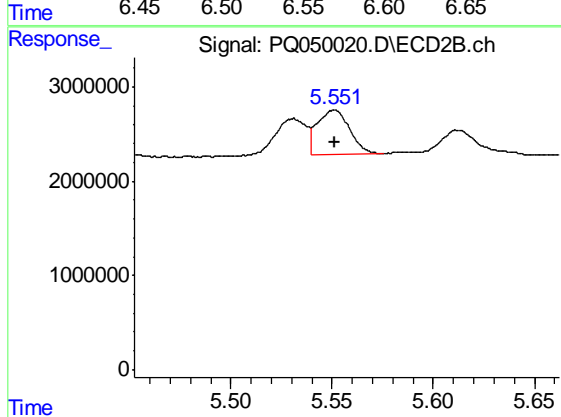
#3 AR-1016-1

R.T.: 5.531 min
 Delta R.T.: 0.000 min
 Response: 4205512
 Conc: 25.30 ng/ml



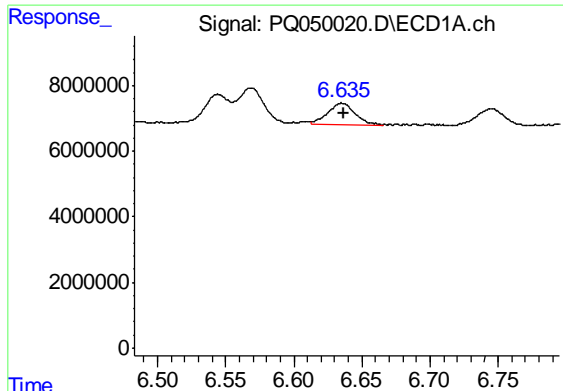
#4 AR-1016-2

R.T.: 6.568 min
 Delta R.T.: -0.003 min
 Response: 14562408
 Conc: 30.98 ng/ml



#4 AR-1016-2

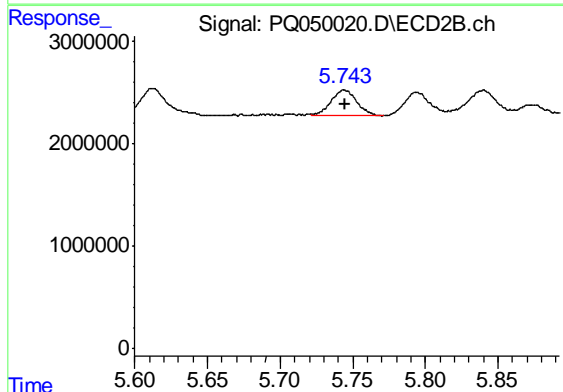
R.T.: 5.551 min
 Delta R.T.: 0.000 min
 Response: 5291084
 Conc: 23.68 ng/ml



#5 AR-1016-3

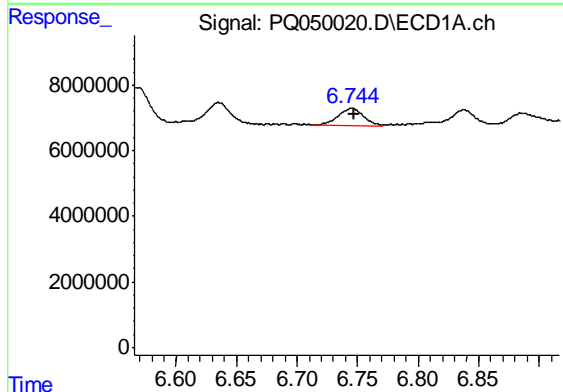
R.T.: 6.635 min
 Delta R.T.: -0.002 min
 Response: 9139426
 Conc: 30.11 ng/ml

Instrument :
 ECD_Q
 ClientSampleId :
 MDL-WATER-01



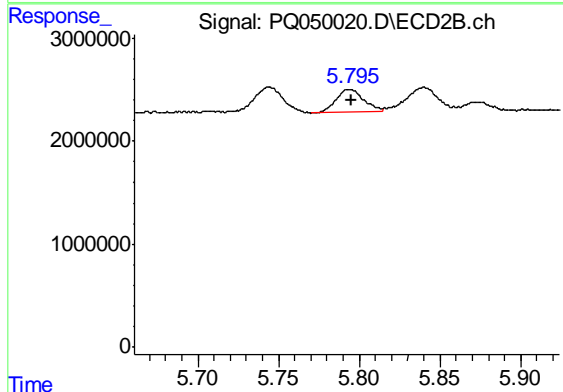
#5 AR-1016-3

R.T.: 5.744 min
 Delta R.T.: -0.001 min
 Response: 3131287
 Conc: 26.43 ng/ml



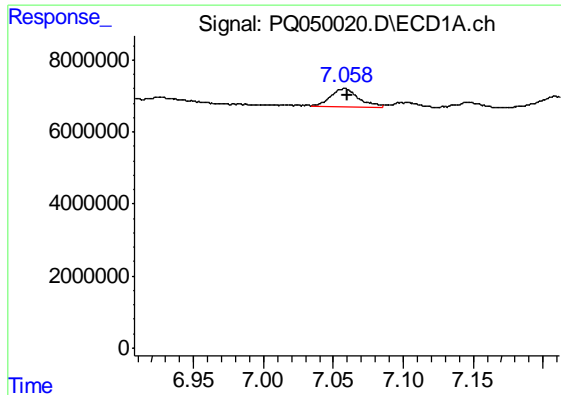
#6 AR-1016-4

R.T.: 6.744 min
 Delta R.T.: -0.002 min
 Response: 7724979
 Conc: 31.77 ng/ml



#6 AR-1016-4

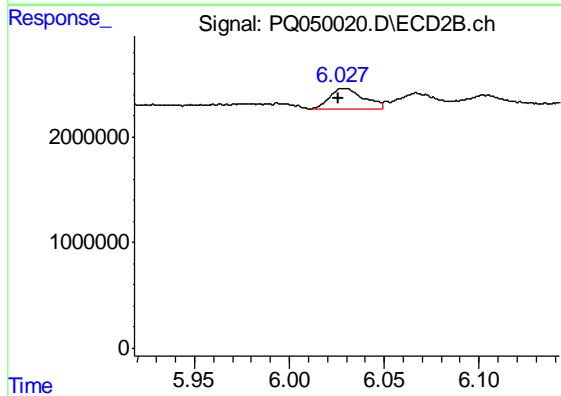
R.T.: 5.795 min
 Delta R.T.: 0.000 min
 Response: 2726902
 Conc: 28.89 ng/ml



#7 AR-1016-5

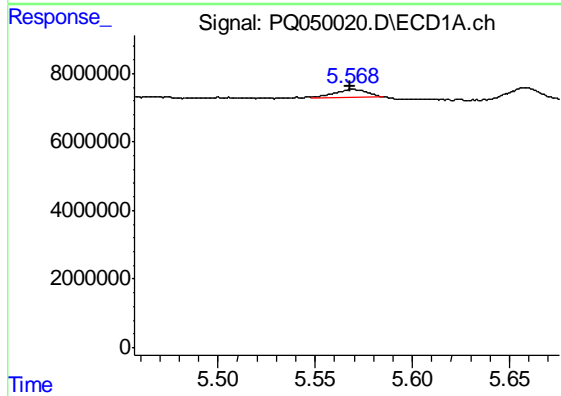
R.T.: 7.058 min
 Delta R.T.: -0.002 min
 Response: 7133562
 Conc: 32.31 ng/ml

Instrument :
 ECD_Q
 ClientSampleId :
 MDL-WATER-01



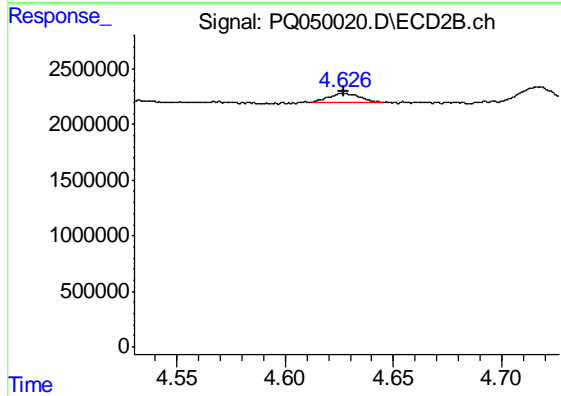
#7 AR-1016-5

R.T.: 6.027 min
 Delta R.T.: 0.001 min
 Response: 2467098
 Conc: 19.96 ng/ml



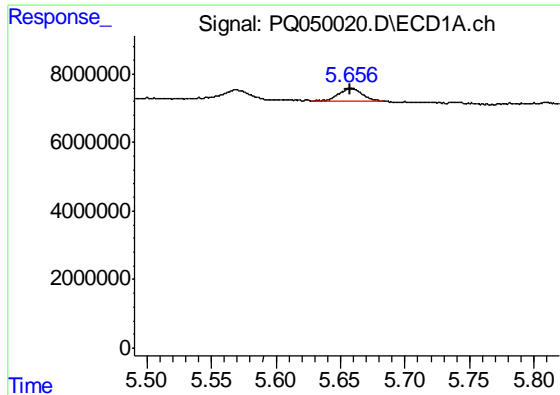
#9 AR-1221-2

R.T.: 5.568 min
 Delta R.T.: 0.000 min
 Response: 2679617
 Conc: 31.83 ng/ml



#9 AR-1221-2

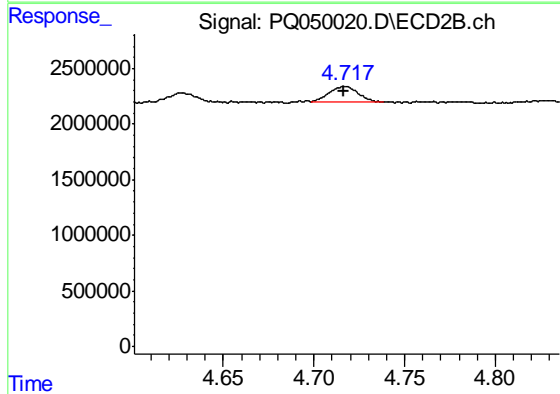
R.T.: 4.627 min
 Delta R.T.: 0.000 min
 Response: 876360
 Conc: 28.80 ng/ml



#10 AR-1221-3

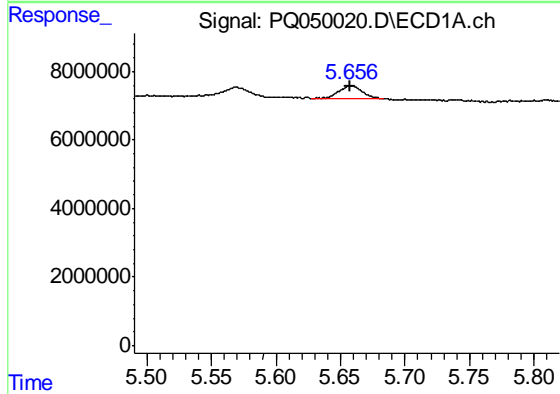
R.T.: 5.657 min
 Delta R.T.: 0.000 min
 Response: 4743709
 Conc: 17.53 ng/ml

Instrument :
 ECD_Q
 ClientSampleId :
 MDL-WATER-01



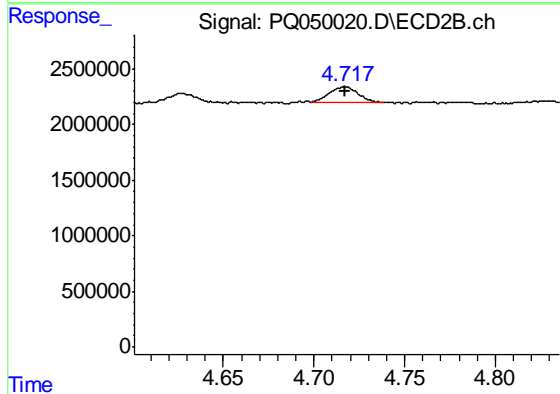
#10 AR-1221-3

R.T.: 4.718 min
 Delta R.T.: 0.001 min
 Response: 1649071
 Conc: 15.73 ng/ml



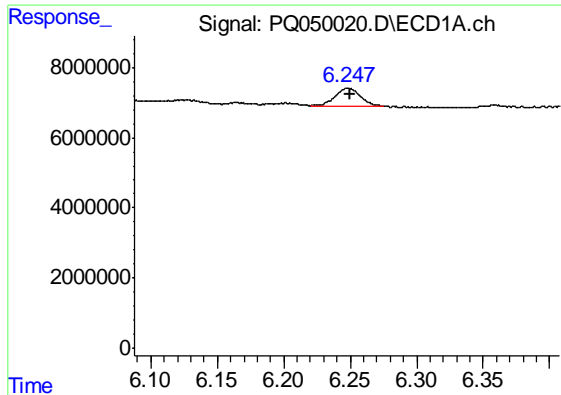
#11 AR-1232-1

R.T.: 5.657 min
 Delta R.T.: 0.000 min
 Response: 4743709
 Conc: 22.66 ng/ml



#11 AR-1232-1

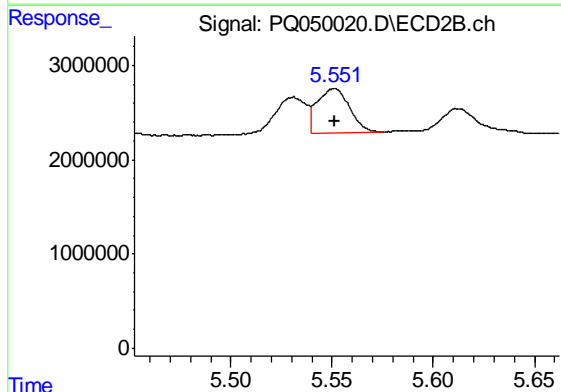
R.T.: 4.718 min
 Delta R.T.: 0.000 min
 Response: 1649071
 Conc: 20.48 ng/ml



#12 AR-1232-2

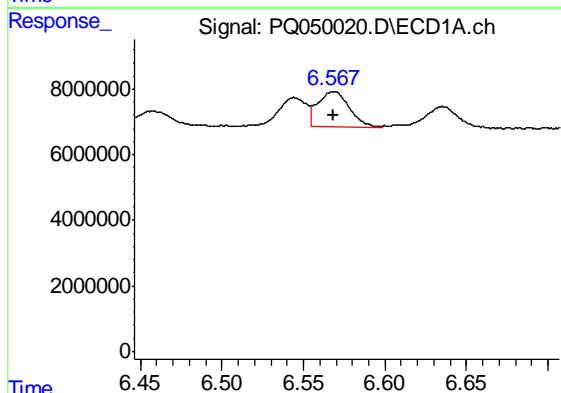
R.T.: 6.248 min
 Delta R.T.: -0.003 min
 Response: 6814730
 Conc: 64.12 ng/ml

Instrument :
 ECD_Q
 ClientSampleId :
 MDL-WATER-01



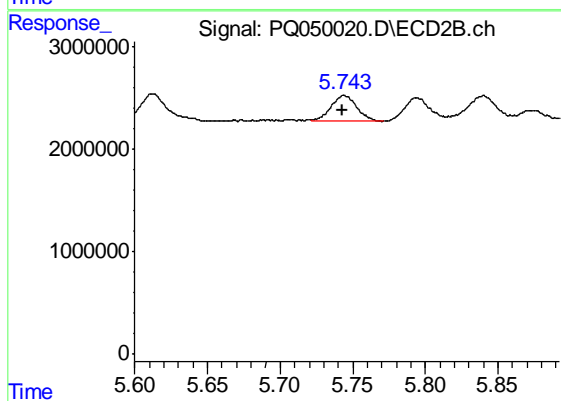
#12 AR-1232-2

R.T.: 5.551 min
 Delta R.T.: 0.000 min
 Response: 5291084
 Conc: 55.77 ng/ml



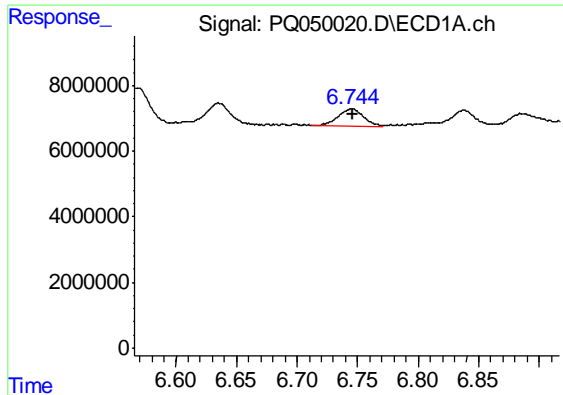
#13 AR-1232-3

R.T.: 6.568 min
 Delta R.T.: 0.000 min
 Response: 14562408
 Conc: 67.32 ng/ml



#13 AR-1232-3

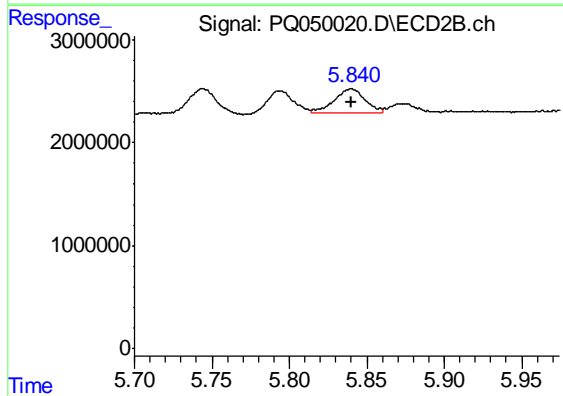
R.T.: 5.744 min
 Delta R.T.: 0.000 min
 Response: 3131287
 Conc: 63.22 ng/ml



#14 AR-1232-4

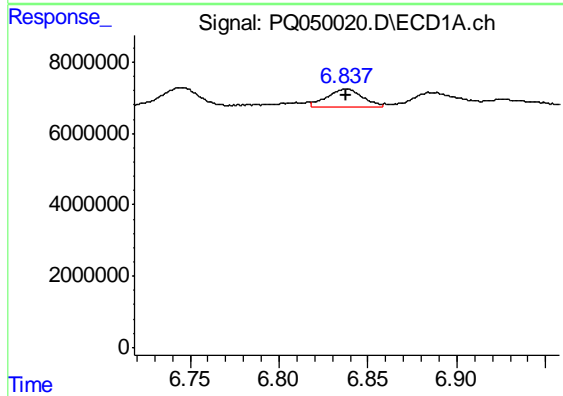
R.T.: 6.744 min
 Delta R.T.: -0.001 min
 Response: 7724979
 Conc: 73.30 ng/ml

Instrument :
 ECD_Q
 ClientSampleId :
 MDL-WATER-01



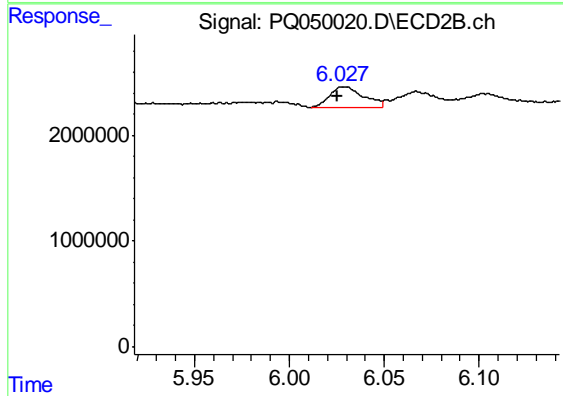
#14 AR-1232-4

R.T.: 5.840 min
 Delta R.T.: 0.000 min
 Response: 3280752
 Conc: 73.61 ng/ml



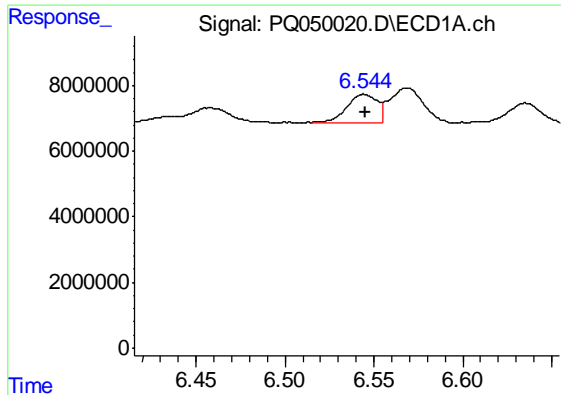
#15 AR-1232-5

R.T.: 6.837 min
 Delta R.T.: 0.000 min
 Response: 6865574
 Conc: 91.14 ng/ml



#15 AR-1232-5

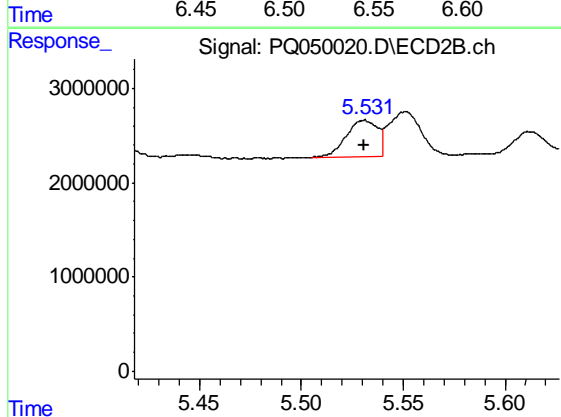
R.T.: 6.027 min
 Delta R.T.: 0.002 min
 Response: 2467098
 Conc: 48.55 ng/ml



#16 AR-1242-1

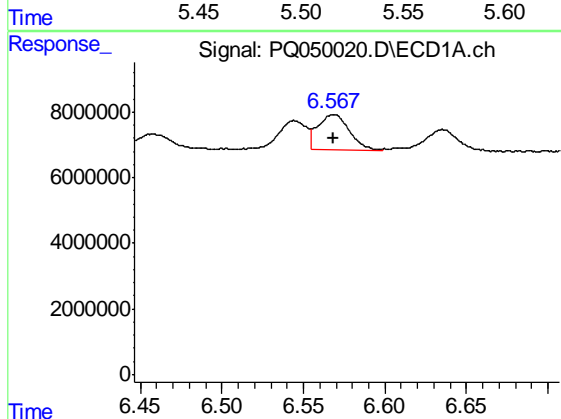
R.T.: 6.544 min
 Delta R.T.: -0.001 min
 Response: 10484511
 Conc: 38.87 ng/ml

Instrument :
 ECD_Q
 ClientSampleId :
 MDL-WATER-01



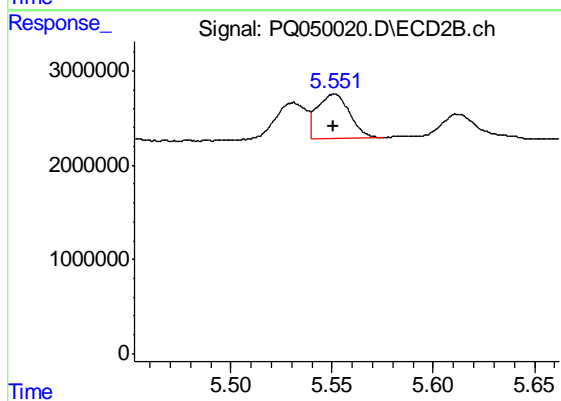
#16 AR-1242-1

R.T.: 5.531 min
 Delta R.T.: 0.000 min
 Response: 4205512
 Conc: 33.09 ng/ml



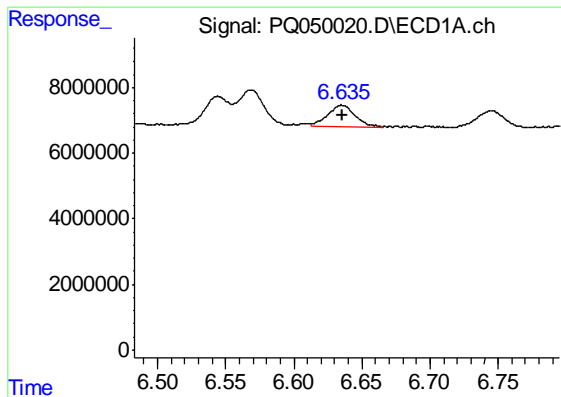
#17 AR-1242-2

R.T.: 6.568 min
 Delta R.T.: 0.000 min
 Response: 14562408
 Conc: 38.56 ng/ml



#17 AR-1242-2

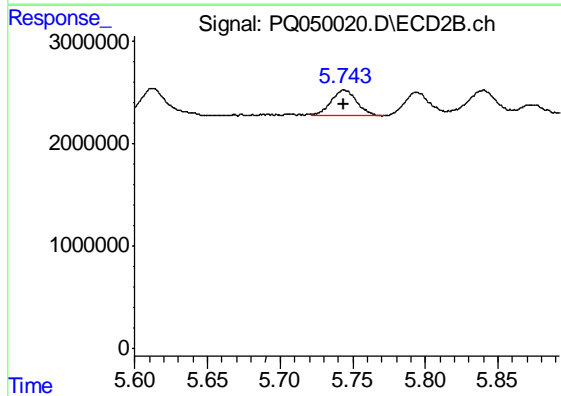
R.T.: 5.551 min
 Delta R.T.: 0.000 min
 Response: 5291084
 Conc: 30.46 ng/ml



#18 AR-1242-3

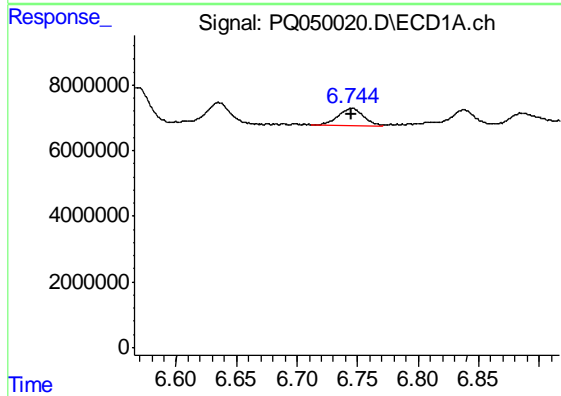
R.T.: 6.635 min
 Delta R.T.: 0.000 min
 Response: 9139426
 Conc: 38.36 ng/ml

Instrument :
 ECD_Q
 ClientSampleId :
 MDL-WATER-01



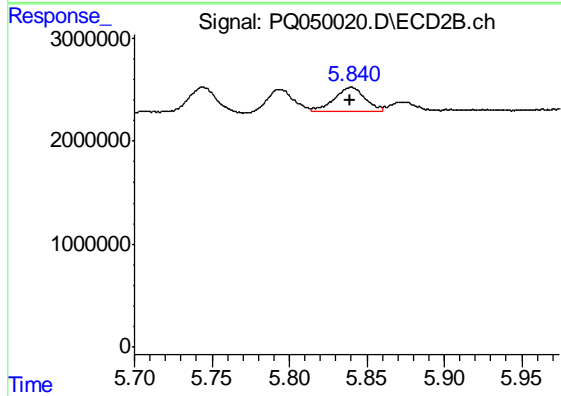
#18 AR-1242-3

R.T.: 5.744 min
 Delta R.T.: 0.000 min
 Response: 3131287
 Conc: 33.89 ng/ml



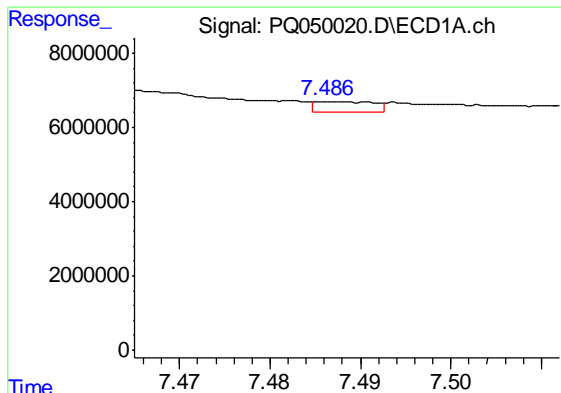
#19 AR-1242-4

R.T.: 6.744 min
 Delta R.T.: 0.000 min
 Response: 7724979
 Conc: 39.87 ng/ml



#19 AR-1242-4

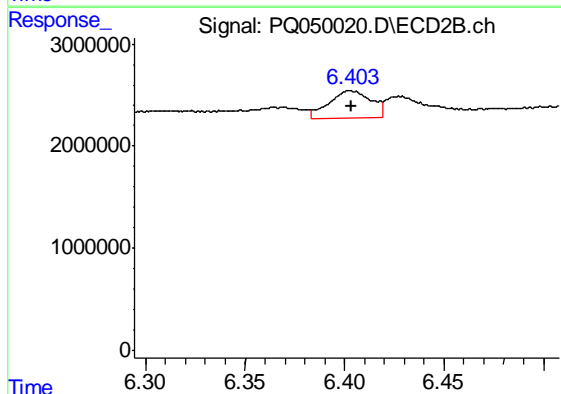
R.T.: 5.840 min
 Delta R.T.: 0.000 min
 Response: 3280752
 Conc: 36.66 ng/ml



#20 AR-1242-5

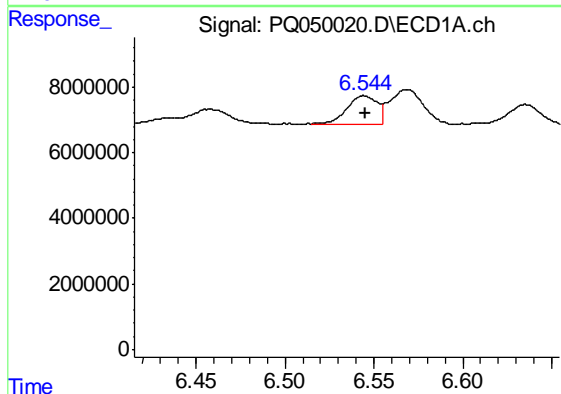
R.T.: 7.486 min
 Delta R.T.: -0.042 min
 Response: 1270395
 Conc: 6.59 ng/ml

Instrument :
 ECD_Q
 ClientSampleId :
 MDL-WATER-01



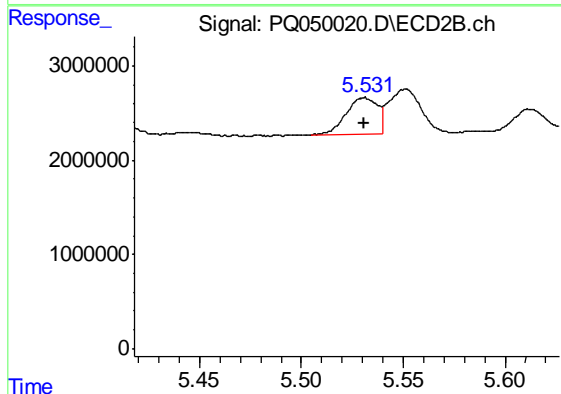
#20 AR-1242-5

R.T.: 6.403 min
 Delta R.T.: 0.000 min
 Response: 3950807
 Conc: 29.64 ng/ml



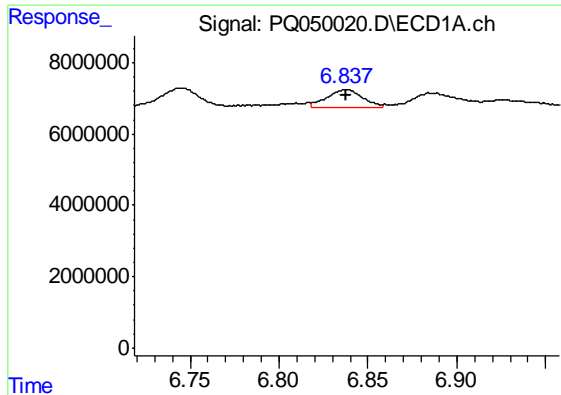
#21 AR-1248-1

R.T.: 6.544 min
 Delta R.T.: 0.000 min
 Response: 10484511
 Conc: 48.22 ng/ml



#21 AR-1248-1

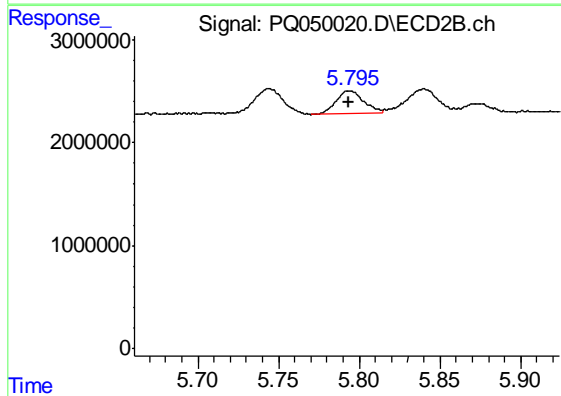
R.T.: 5.531 min
 Delta R.T.: 0.000 min
 Response: 4205512
 Conc: 41.07 ng/ml



#22 AR-1248-2

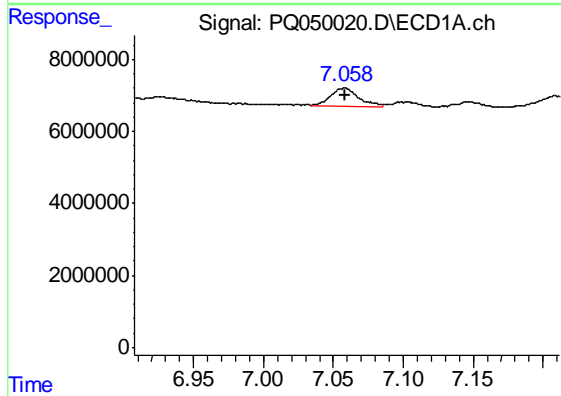
R.T.: 6.837 min
 Delta R.T.: 0.000 min
 Response: 6865574
 Conc: 24.79 ng/ml

Instrument :
 ECD_Q
 ClientSampleId :
 MDL-WATER-01



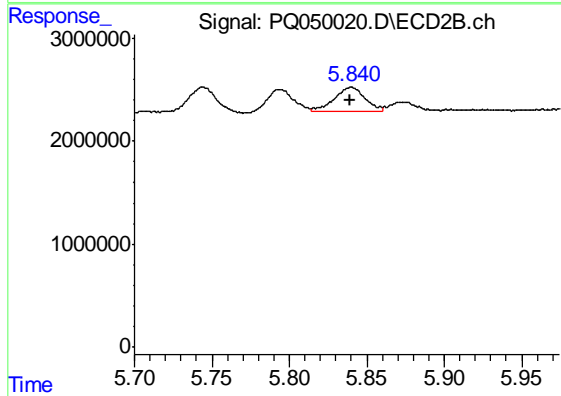
#22 AR-1248-2

R.T.: 5.795 min
 Delta R.T.: 0.001 min
 Response: 2726902
 Conc: 20.92 ng/ml



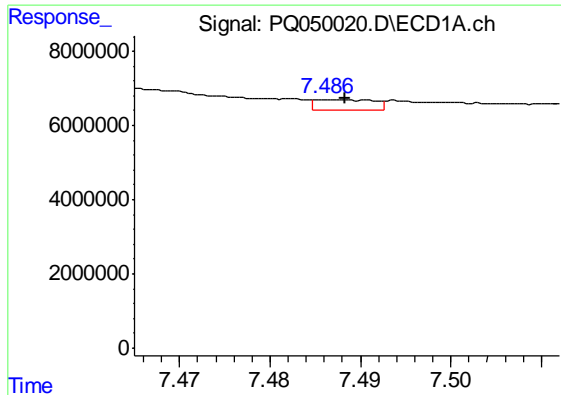
#23 AR-1248-3

R.T.: 7.058 min
 Delta R.T.: 0.000 min
 Response: 7133562
 Conc: 23.74 ng/ml



#23 AR-1248-3

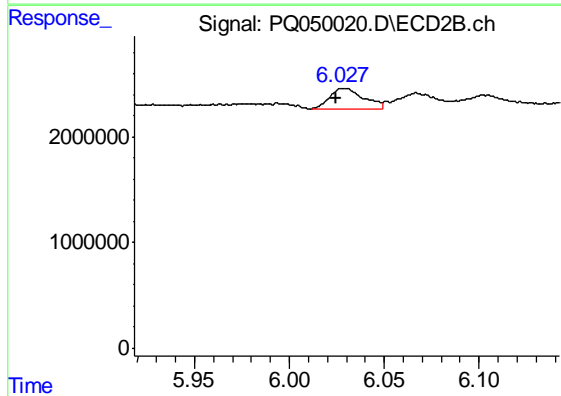
R.T.: 5.840 min
 Delta R.T.: 0.000 min
 Response: 3280752
 Conc: 24.73 ng/ml



#24 AR-1248-4

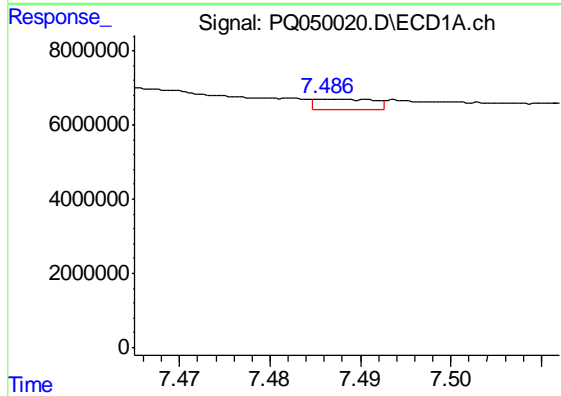
R.T.: 7.486 min
 Delta R.T.: -0.002 min
 Response: 1270395
 Conc: 3.80 ng/ml

Instrument :
 ECD_Q
 ClientSampleId :
 MDL-WATER-01



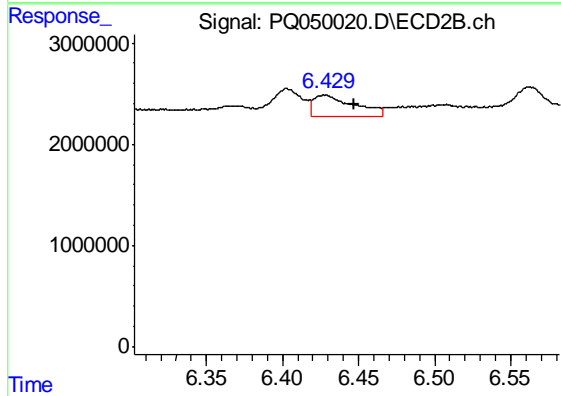
#24 AR-1248-4

R.T.: 6.027 min
 Delta R.T.: 0.002 min
 Response: 2467098
 Conc: 14.94 ng/ml



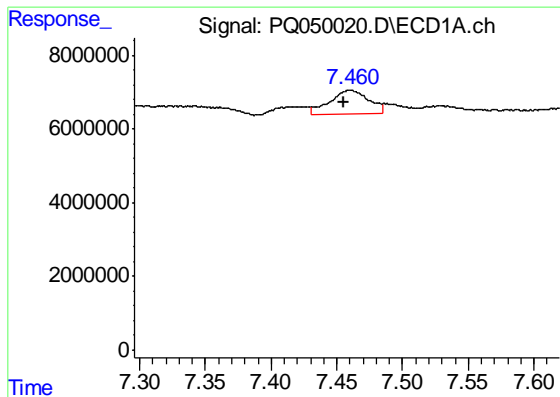
#25 AR-1248-5

R.T.: 7.486 min
 Delta R.T.: -0.042 min
 Response: 1270395
 Conc: 4.04 ng/ml



#25 AR-1248-5

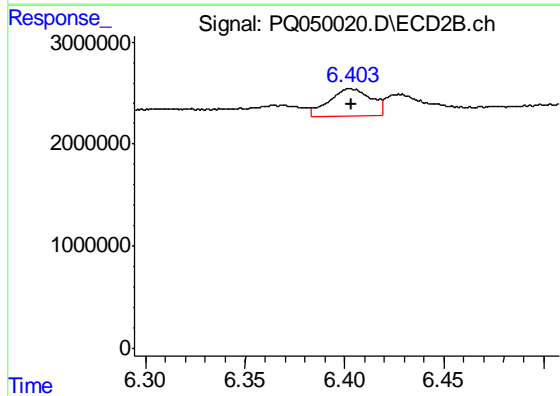
R.T.: 6.429 min
 Delta R.T.: -0.018 min
 Response: 3854532
 Conc: 21.27 ng/ml



#26 AR-1254-1

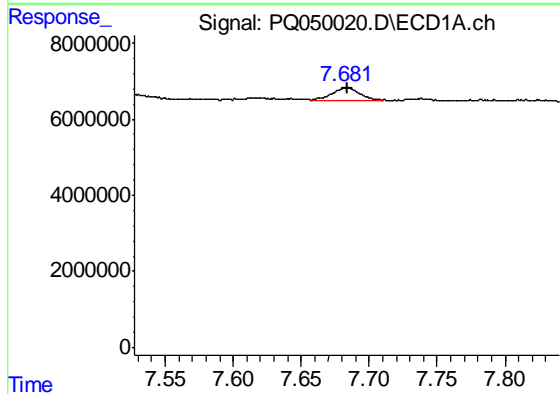
R.T.: 7.460 min
Delta R.T.: 0.004 min
Response: 13559430
Conc: 41.11 ng/ml

Instrument :
ECD_Q
ClientSampleId :
MDL-WATER-01



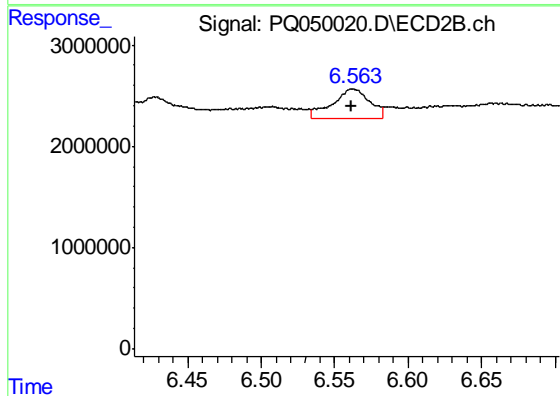
#26 AR-1254-1

R.T.: 6.403 min
Delta R.T.: 0.000 min
Response: 3950807
Conc: 14.26 ng/ml



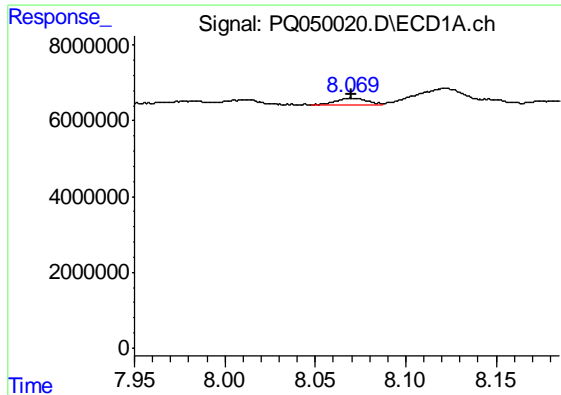
#27 AR-1254-2

R.T.: 7.682 min
Delta R.T.: -0.002 min
Response: 4905792
Conc: 10.08 ng/ml



#27 AR-1254-2

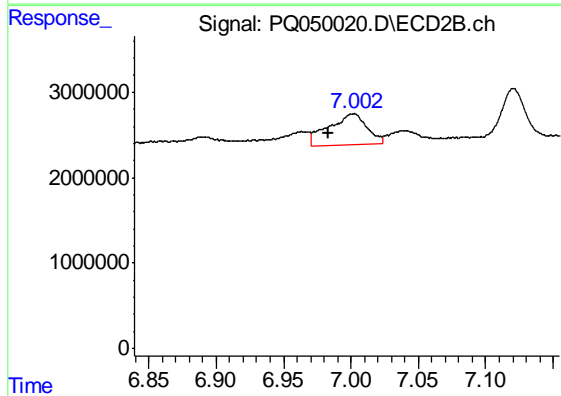
R.T.: 6.562 min
Delta R.T.: 0.000 min
Response: 5020529
Conc: 20.30 ng/ml



#28 AR-1254-3

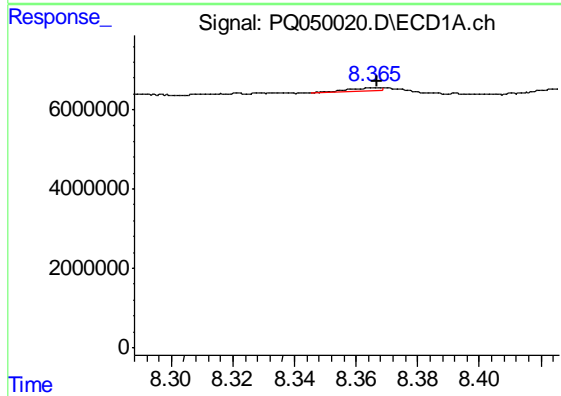
R.T.: 8.070 min
 Delta R.T.: 0.000 min
 Response: 2230976
 Conc: 4.59 ng/ml

Instrument :
 ECD_Q
 ClientSampleId :
 MDL-WATER-01



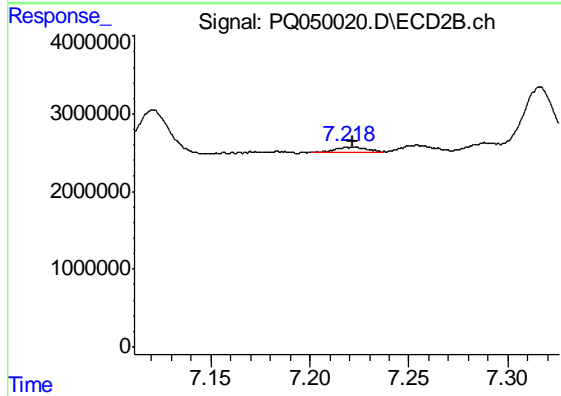
#28 AR-1254-3

R.T.: 7.003 min
 Delta R.T.: 0.019 min
 Response: 7153186
 Conc: 17.44 ng/ml



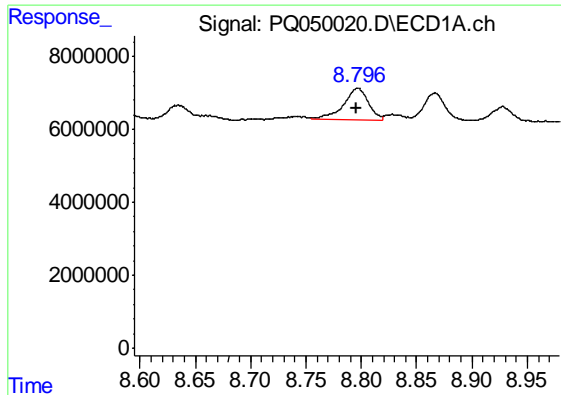
#29 AR-1254-4

R.T.: 8.365 min
 Delta R.T.: -0.002 min
 Response: 597039
 Conc: 1.57 ng/ml



#29 AR-1254-4

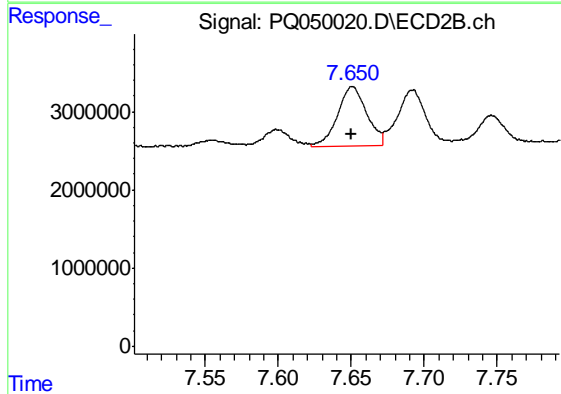
R.T.: 7.219 min
 Delta R.T.: -0.003 min
 Response: 836901
 Conc: 2.77 ng/ml



#30 AR-1254-5

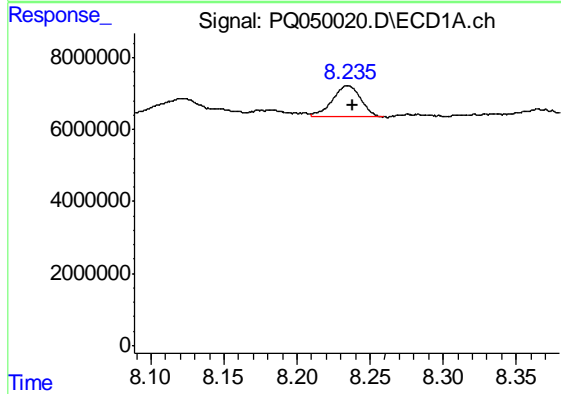
R.T.: 8.797 min
 Delta R.T.: 0.000 min
 Response: 13631587
 Conc: 36.48 ng/ml

Instrument :
 ECD_Q
 ClientSampleId :
 MDL-WATER-01



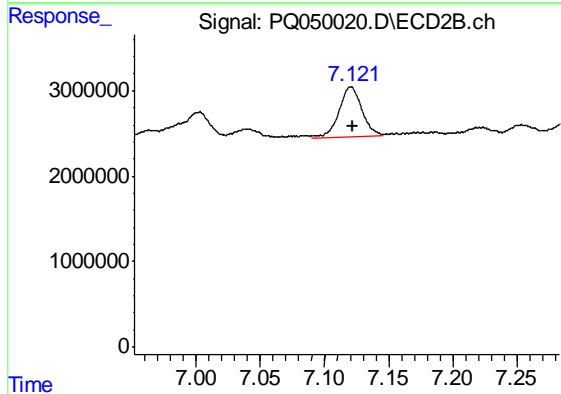
#30 AR-1254-5

R.T.: 7.650 min
 Delta R.T.: 0.000 min
 Response: 10497170
 Conc: 26.18 ng/ml



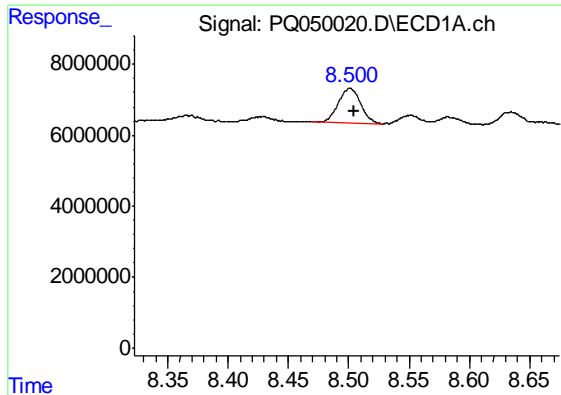
#31 AR-1260-1

R.T.: 8.235 min
 Delta R.T.: -0.003 min
 Response: 11721334
 Conc: 35.99 ng/ml



#31 AR-1260-1

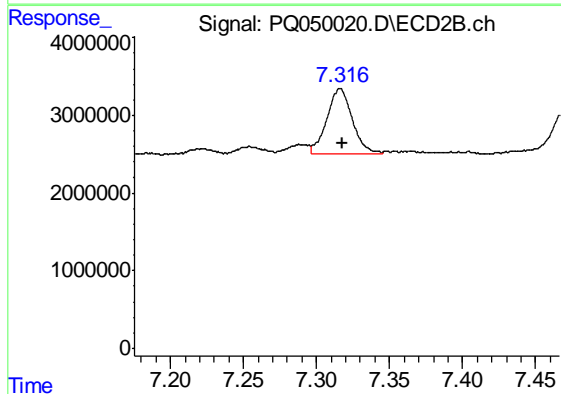
R.T.: 7.121 min
 Delta R.T.: 0.000 min
 Response: 7507342
 Conc: 30.64 ng/ml



#32 AR-1260-2

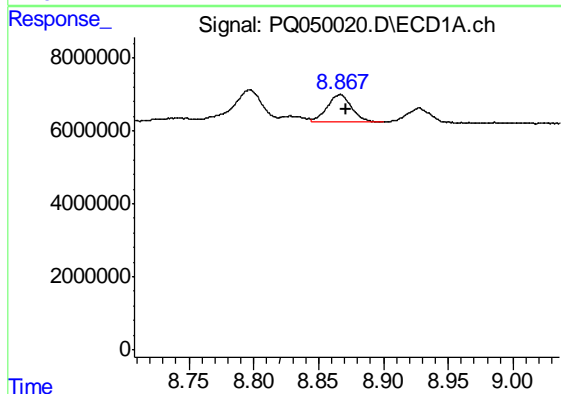
R.T.: 8.501 min
 Delta R.T.: -0.004 min
 Response: 12532147
 Conc: 32.38 ng/ml

Instrument :
 ECD_Q
 ClientSampleId :
 MDL-WATER-01



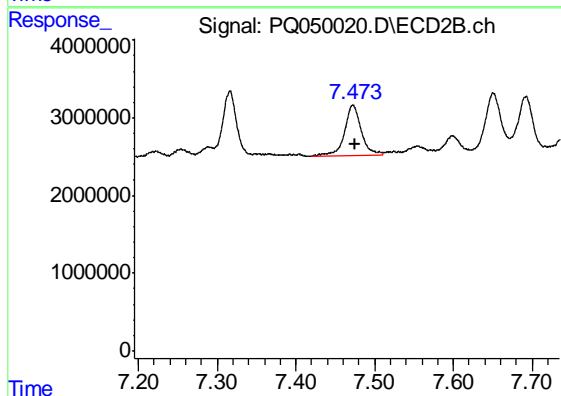
#32 AR-1260-2

R.T.: 7.316 min
 Delta R.T.: -0.001 min
 Response: 10352091
 Conc: 29.35 ng/ml



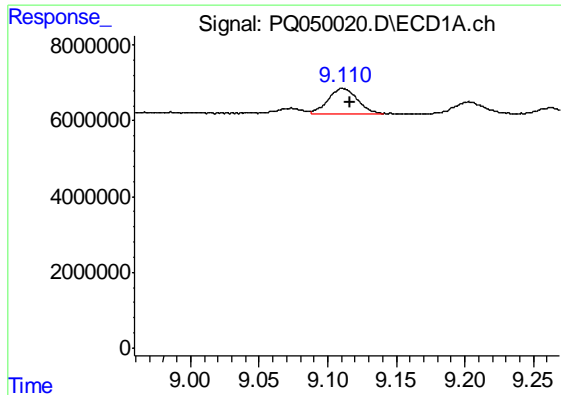
#33 AR-1260-3

R.T.: 8.867 min
 Delta R.T.: -0.004 min
 Response: 9720776
 Conc: 32.37 ng/ml



#33 AR-1260-3

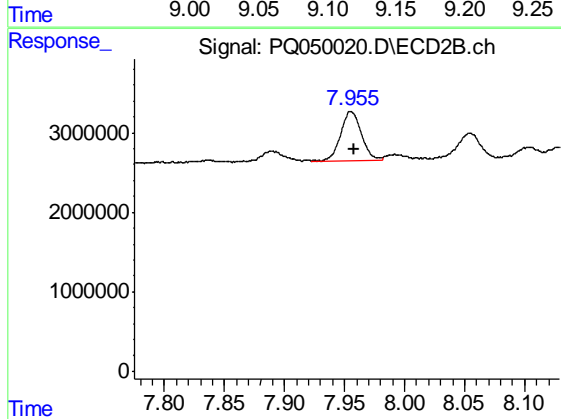
R.T.: 7.473 min
 Delta R.T.: -0.002 min
 Response: 9722337
 Conc: 32.26 ng/ml



#34 AR-1260-4

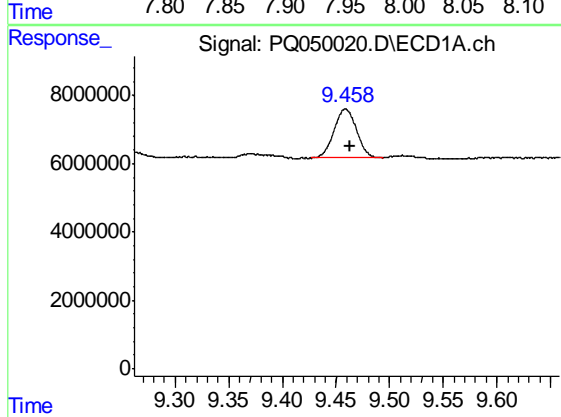
R.T.: 9.111 min
 Delta R.T.: -0.006 min
 Response: 9827123
 Conc: 30.48 ng/ml

Instrument :
 ECD_Q
 ClientSampleId :
 MDL-WATER-01



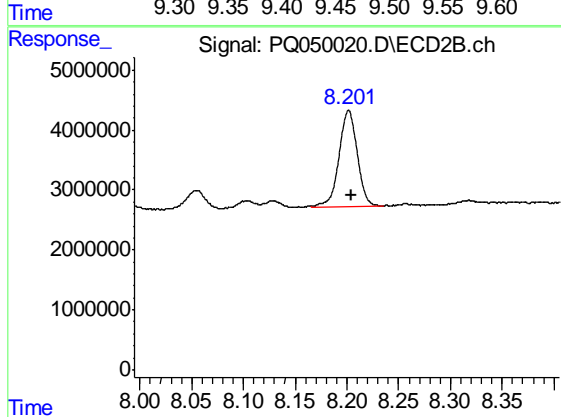
#34 AR-1260-4

R.T.: 7.955 min
 Delta R.T.: -0.003 min
 Response: 7472093
 Conc: 27.40 ng/ml



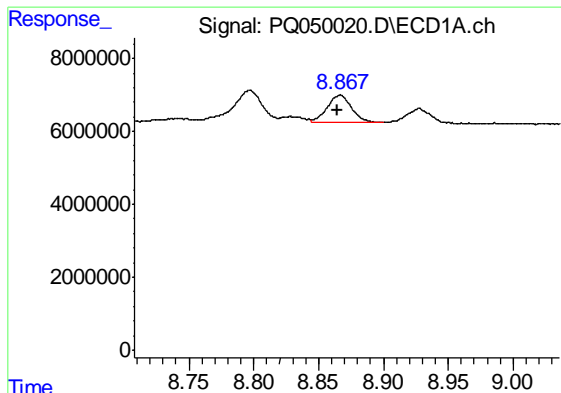
#35 AR-1260-5

R.T.: 9.459 min
 Delta R.T.: -0.005 min
 Response: 21069590
 Conc: 31.40 ng/ml



#35 AR-1260-5

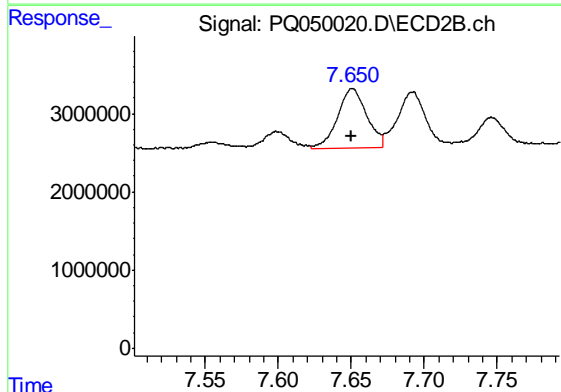
R.T.: 8.202 min
 Delta R.T.: -0.003 min
 Response: 19886170
 Conc: 25.80 ng/ml



#36 AR-1262-1

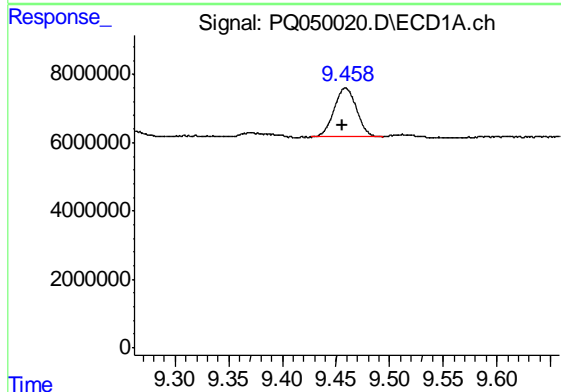
R.T.: 8.867 min
 Delta R.T.: 0.003 min
 Response: 9720776
 Conc: 22.29 ng/ml

Instrument :
 ECD_Q
 ClientSampled :
 MDL-WATER-01



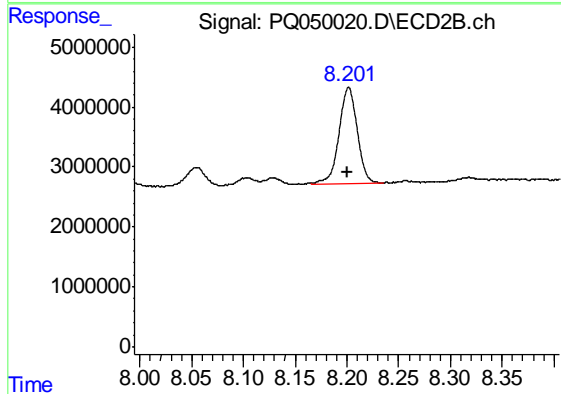
#36 AR-1262-1

R.T.: 7.650 min
 Delta R.T.: 0.000 min
 Response: 10497170
 Conc: 50.55 ng/ml



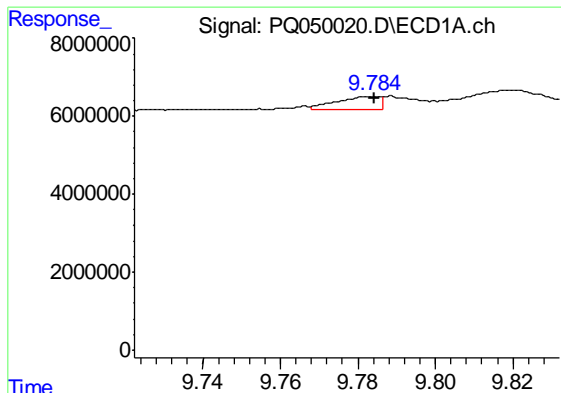
#37 AR-1262-2

R.T.: 9.459 min
 Delta R.T.: 0.002 min
 Response: 21069590
 Conc: 27.34 ng/ml



#37 AR-1262-2

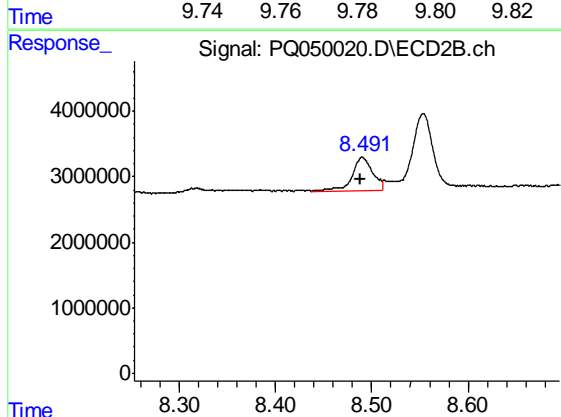
R.T.: 8.202 min
 Delta R.T.: 0.000 min
 Response: 19886170
 Conc: 22.41 ng/ml



#38 AR-1262-3

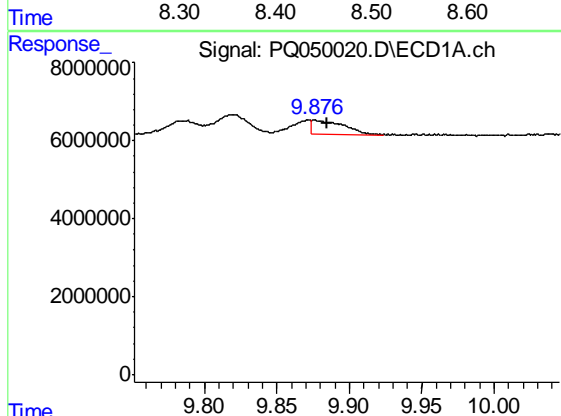
R.T.: 9.784 min
 Delta R.T.: 0.000 min
 Response: 2624759
 Conc: 7.17 ng/ml

Instrument :
 ECD_Q
 ClientSampleId :
 MDL-WATER-01



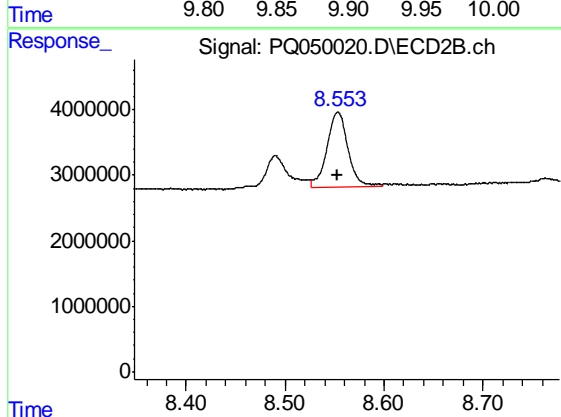
#38 AR-1262-3

R.T.: 8.490 min
 Delta R.T.: 0.003 min
 Response: 7318747
 Conc: 19.84 ng/ml



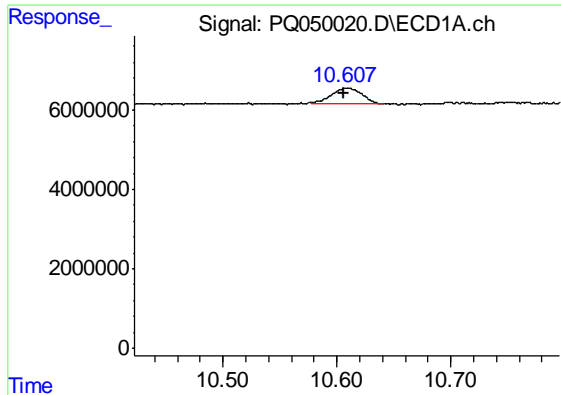
#39 AR-1262-4

R.T.: 9.876 min
 Delta R.T.: -0.008 min
 Response: 5651042
 Conc: 12.77 ng/ml



#39 AR-1262-4

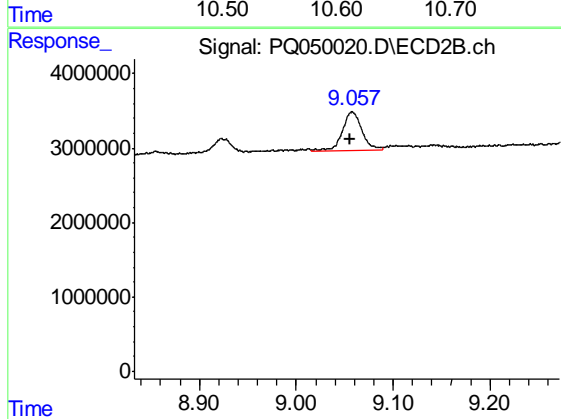
R.T.: 8.554 min
 Delta R.T.: 0.001 min
 Response: 17223305
 Conc: 26.97 ng/ml



#40 AR-1262-5

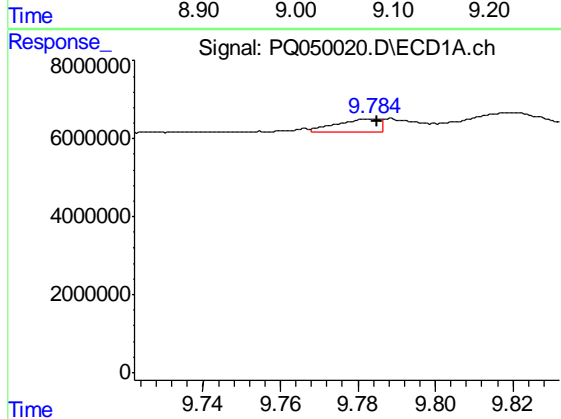
R.T.: 10.608 min
 Delta R.T.: 0.002 min
 Response: 7449429
 Conc: 21.67 ng/ml

Instrument :
 ECD_Q
 ClientSampled :
 MDL-WATER-01



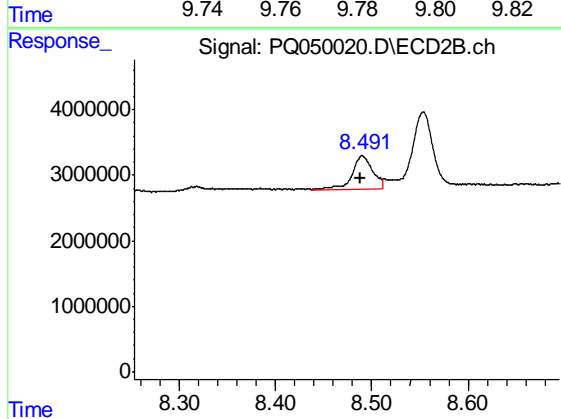
#40 AR-1262-5

R.T.: 9.058 min
 Delta R.T.: 0.002 min
 Response: 7142512
 Conc: 21.41 ng/ml



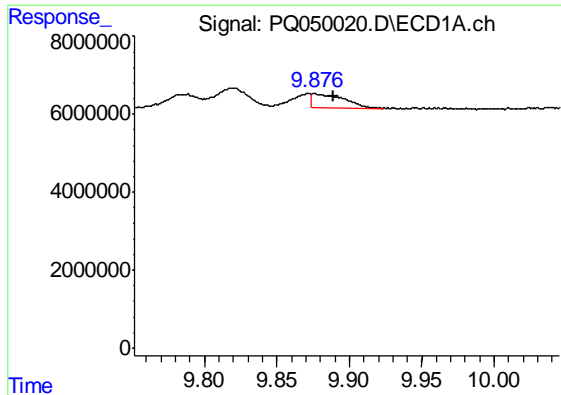
#41 AR-1268-1

R.T.: 9.784 min
 Delta R.T.: 0.000 min
 Response: 2624759
 Conc: 2.73 ng/ml



#41 AR-1268-1

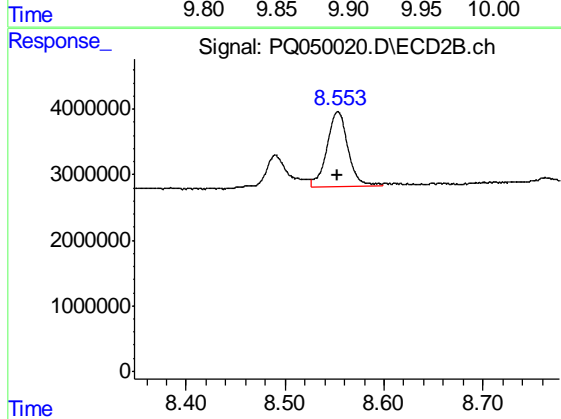
R.T.: 8.490 min
 Delta R.T.: 0.003 min
 Response: 7318747
 Conc: 6.53 ng/ml



#42 AR-1268-2

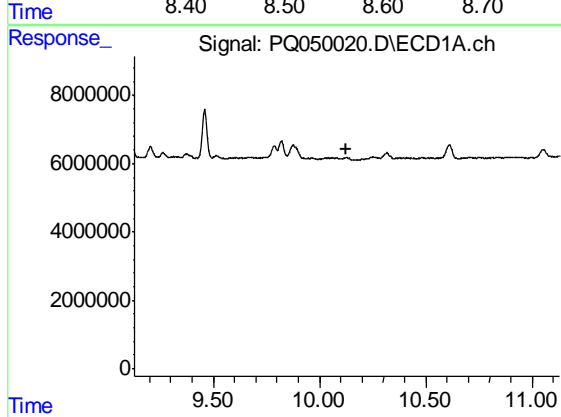
R.T.: 9.876 min
 Delta R.T.: -0.013 min
 Response: 5651042
 Conc: 6.14 ng/ml

Instrument :
 ECD_Q
 ClientSampleId :
 MDL-WATER-01



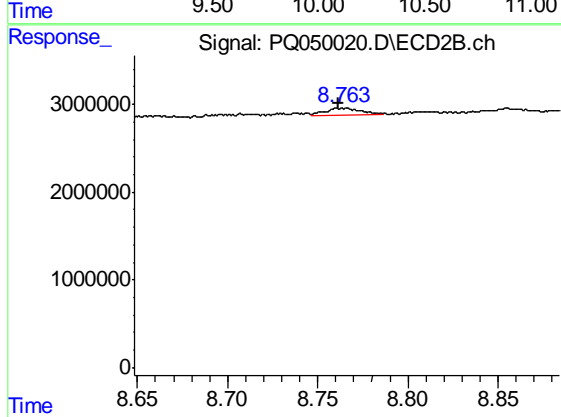
#42 AR-1268-2

R.T.: 8.554 min
 Delta R.T.: 0.000 min
 Response: 17223305
 Conc: 17.74 ng/ml



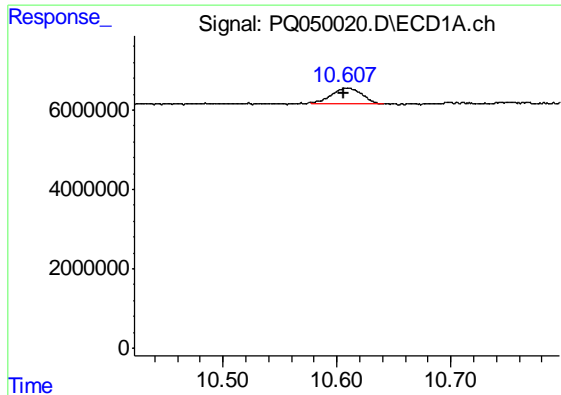
#43 AR-1268-3

R.T.: 0.000 min
 Exp R.T. : 10.128 min
 Response: 0
 Conc: N.D.



#43 AR-1268-3

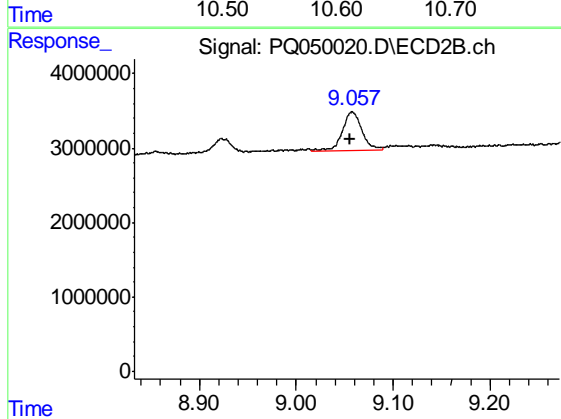
R.T.: 8.763 min
 Delta R.T.: 0.002 min
 Response: 1121351
 Conc: 1.35 ng/ml



#44 AR-1268-4

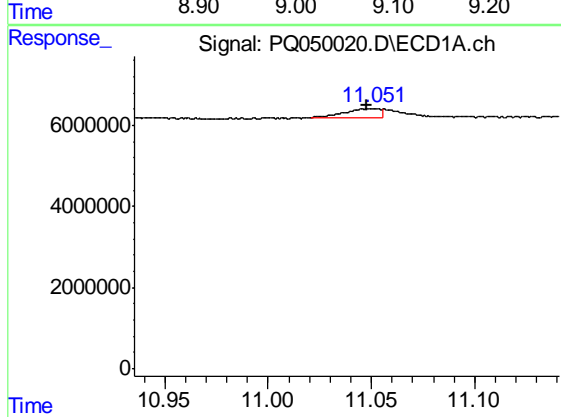
R.T.: 10.608 min
 Delta R.T.: 0.002 min
 Response: 7449429
 Conc: 19.26 ng/ml

Instrument :
 ECD_Q
 ClientSampleId :
 MDL-WATER-01



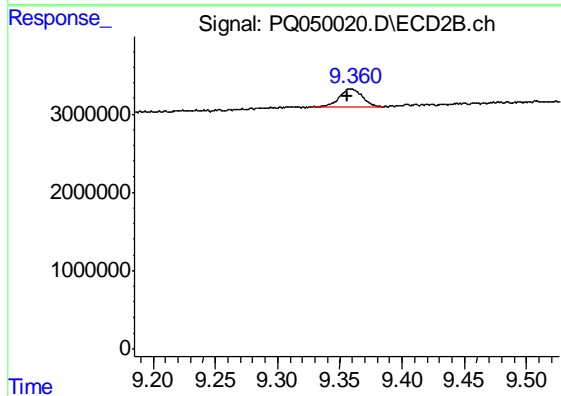
#44 AR-1268-4

R.T.: 9.058 min
 Delta R.T.: 0.002 min
 Response: 7142512
 Conc: 18.76 ng/ml



#45 AR-1268-5

R.T.: 11.052 min
 Delta R.T.: 0.004 min
 Response: 2529720
 Conc: 0.98 ng/ml



#45 AR-1268-5

R.T.: 9.360 min
 Delta R.T.: 0.003 min
 Response: 2985827
 Conc: 1.16 ng/ml