

Data Path : Z:\pestpcbsrv\HPCHEM1\ECD_Q\Data\PQ092620\
 Data File : PQ050028.D
 Signal(s) : Signal #1: ECD1A.ch Signal #2: ECD2B.ch
 Acq On : 25 Sep 2020 08:24
 Operator : DD\AJ
 Sample : HEXANE
 Misc :
 ALS Vial : 1 Sample Multiplier: 1

Instrument :
 ECD_Q
 ClientSampled :

Integration File signal 1: autoint1.e
 Integration File signal 2: autoint2.e
 Quant Time: Sep 26 02:31:05 2020
 Quant Method : Z:\pestpcbsrv\HPCHEM1\ECD_Q\Method\PQ092420CLP.M
 Quant Title : GC EXTRACTABLES
 QLast Update : Thu Sep 24 08:00:48 2020
 Response via : Initial Calibration
 Integrator: ChemStation

Volume Inj. : 1 µl
 Signal #1 Phase : ZB MR1 Signal #2 Phase: ZB MR2
 Signal #1 Info : 30Mx0.32mmx 0.5µm Signal #2 Info : 30M x 0.32mm x 0.25µm

Compound	RT#1	RT#2	Resp#1	Resp#2	ng/ml	ng/ml
System Monitoring Compounds						
2) SA Decachlor...	0.000	9.633	0	452382	N.D.	0.084 #
Target Compounds						
7) L1 AR-1016-5	0.000	6.047	0	1737085	N.D.	14.051 #
15) L3 AR-1232-5	0.000	6.047	0	1737085	N.D.	34.184 #
20) L4 AR-1242-5	7.487f	6.430	6738432	2091343	34.981	15.688 #
24) L5 AR-1248-4	7.487	6.047	6738432	1737085	20.145	10.521 #
25) L5 AR-1248-5	7.487f	6.430	6738432	2091343	21.406	11.538 #
26) L6 AR-1254-1	7.453	6.430	672925	2091343	2.040	7.547 #
29) L6 AR-1254-4	8.310f	7.166f	755887	349769	1.993	1.156 #
30) L6 AR-1254-5	0.000	7.654	0	224607	N.D.	0.560 #
31) L7 AR-1260-1	8.294f	7.129	430403	1314579	1.322	5.364 #
32) L7 AR-1260-2	0.000	7.316	0	245389	N.D.	0.696 #
33) L7 AR-1260-3	0.000	7.463	0	1077947	N.D.	3.577 #
35) L7 AR-1260-5	0.000	8.198	0	339150	N.D.	0.440 #
36) L8 AR-1262-1	0.000	7.654	0	224607	N.D.	1.082 #
37) L8 AR-1262-2	0.000	8.198	0	339150	N.D.	0.382 #
38) L8 AR-1262-3	0.000	8.489	0	110172	N.D.	0.299 #
39) L8 AR-1262-4	0.000	8.558	0	364526	N.D.	0.571 #
40) L8 AR-1262-5	0.000	9.054	0	279887	N.D.	0.839 #
41) L9 AR-1268-1	0.000	8.489	0	110172	N.D.	0.098 #
42) L9 AR-1268-2	0.000	8.558	0	364526	N.D.	0.376 #
43) L9 AR-1268-3	0.000	8.780	0	936573	N.D.	1.128 #
44) L9 AR-1268-4	0.000	9.054	0	279887	N.D.	0.735 #
45) L9 AR-1268-5	0.000	9.308f	0	150080	N.D.	0.058 #

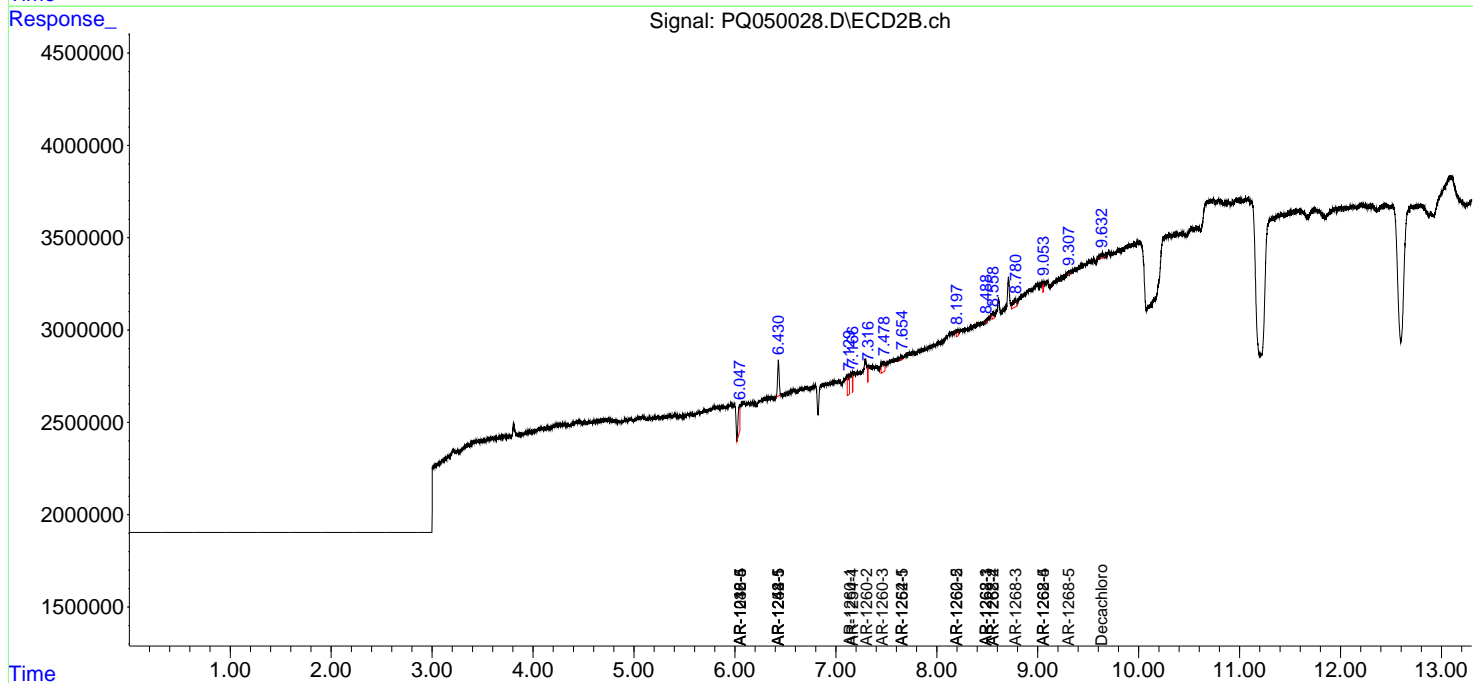
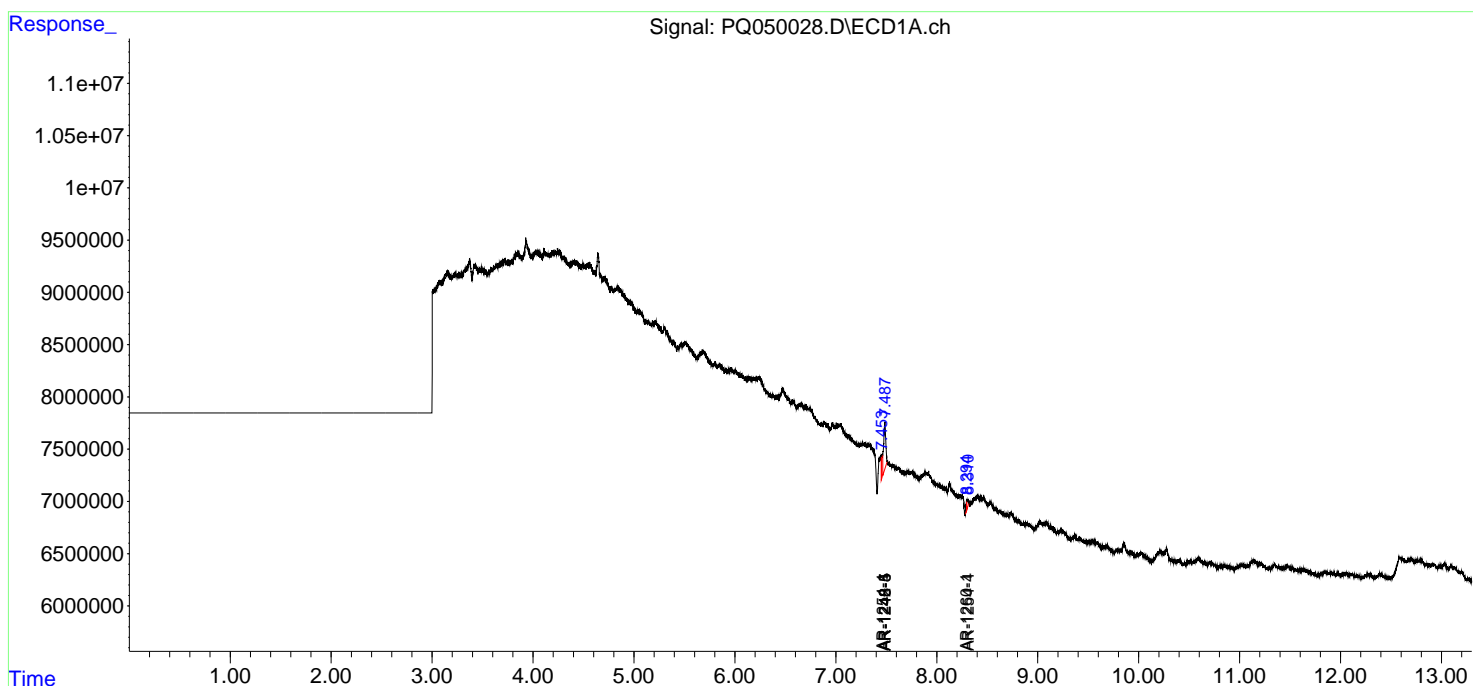
(f)=RT Delta > 1/2 Window (#)=Amounts differ by > 25% (m)=manual int.

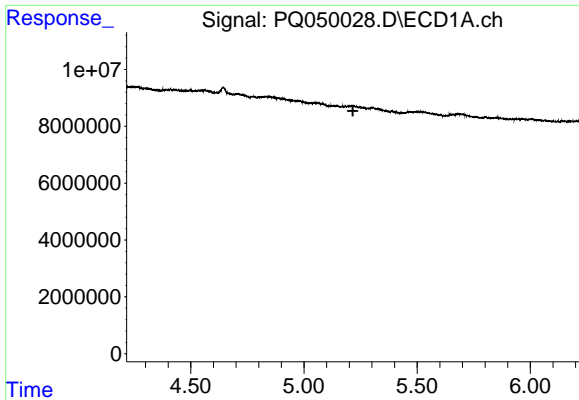
Data Path : Z:\pestpcbsrv\HPCHEM1\ECD_Q\Data\PQ092620\
 Data File : PQ050028.D
 Signal(s) : Signal #1: ECD1A.ch Signal #2: ECD2B.ch
 Acq On : 25 Sep 2020 08:24
 Operator : DD\AJ
 Sample : HEXANE
 Misc :
 ALS Vial : 1 Sample Multiplier: 1

Instrument :
 ECD_Q
 ClientSampled :

Integration File signal 1: autoint1.e
 Integration File signal 2: autoint2.e
 Quant Time: Sep 26 02:31:05 2020
 Quant Method : Z:\pestpcbsrv\HPCHEM1\ECD_Q\Method\PQ092420CLP.M
 Quant Title : GC EXTRACTABLES
 QLast Update : Thu Sep 24 08:00:48 2020
 Response via : Initial Calibration
 Integrator: ChemStation

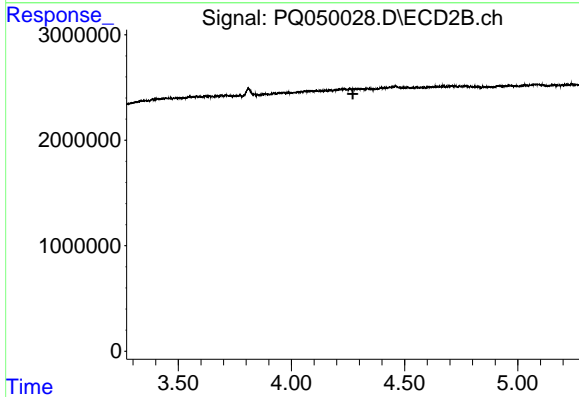
Volume Inj. : 1 µl
 Signal #1 Phase : ZB MR1 Signal #2 Phase: ZB MR2
 Signal #1 Info : 30Mx0.32mmx 0.5µm Signal #2 Info : 30M x 0.32mm x 0.25µm



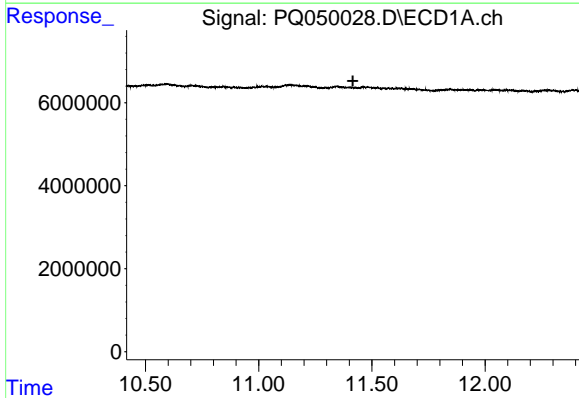


#1 Tetrachloro-m-xylene
 R.T.: 0.000 min
 Exp R.T. : 5.216 min
 Response: 0
 Conc: N.D.

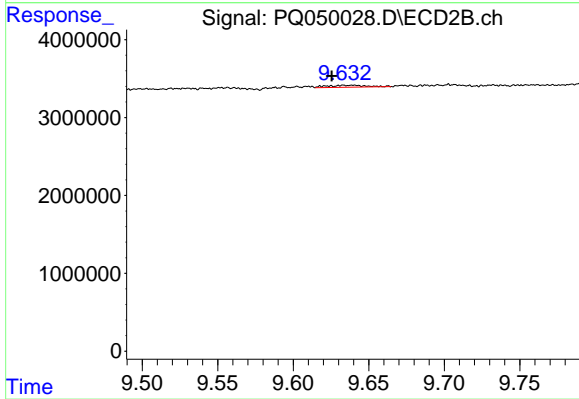
Instrument :
 ECD_Q
 ClientSampleId :



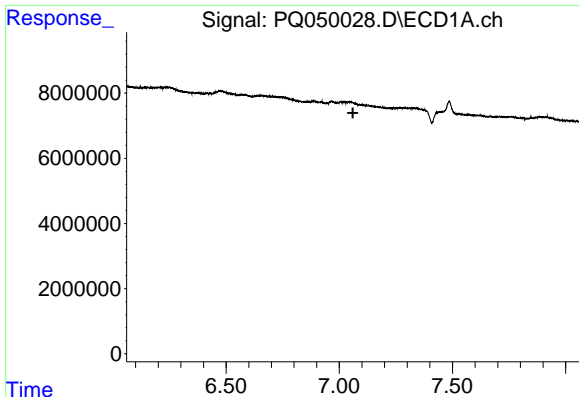
#1 Tetrachloro-m-xylene
 R.T.: 0.000 min
 Exp R.T. : 4.271 min
 Response: 0
 Conc: N.D.



#2 Decachlorobiphenyl
 R.T.: 0.000 min
 Exp R.T. : 11.416 min
 Response: 0
 Conc: N.D.



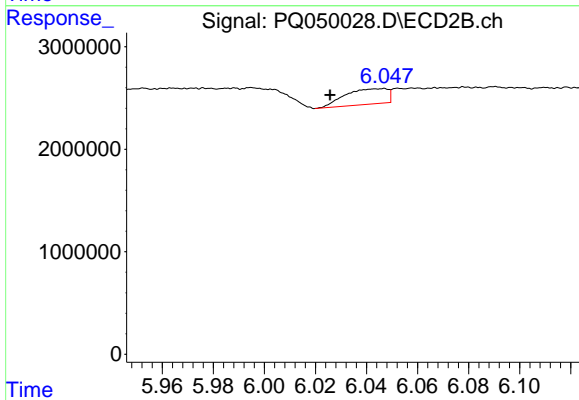
#2 Decachlorobiphenyl
 R.T.: 9.633 min
 Delta R.T.: 0.008 min
 Response: 452382
 Conc: 0.08 ng/ml



#7 AR-1016-5

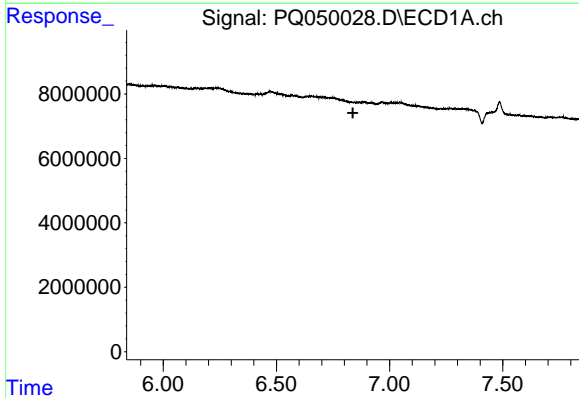
R.T.: 0.000 min
 Exp R.T. : 7.060 min
 Response: 0
 Conc: N.D.

Instrument :
 ECD_Q
 ClientSampled :



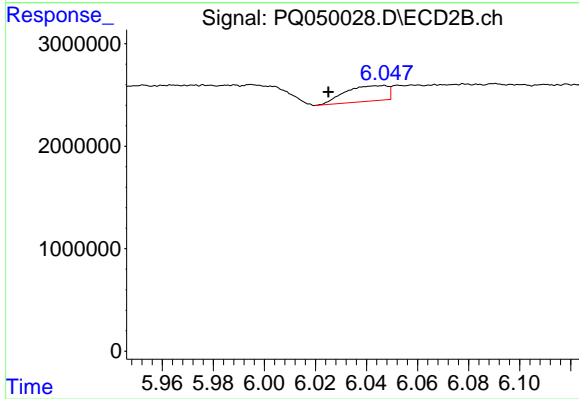
#7 AR-1016-5

R.T.: 6.047 min
 Delta R.T.: 0.021 min
 Response: 1737085
 Conc: 14.05 ng/ml



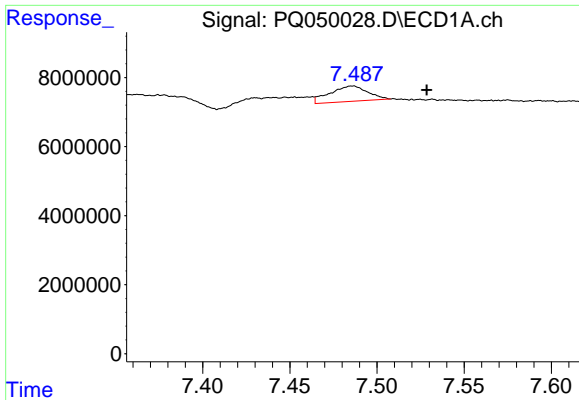
#15 AR-1232-5

R.T.: 0.000 min
 Exp R.T. : 6.838 min
 Response: 0
 Conc: N.D.



#15 AR-1232-5

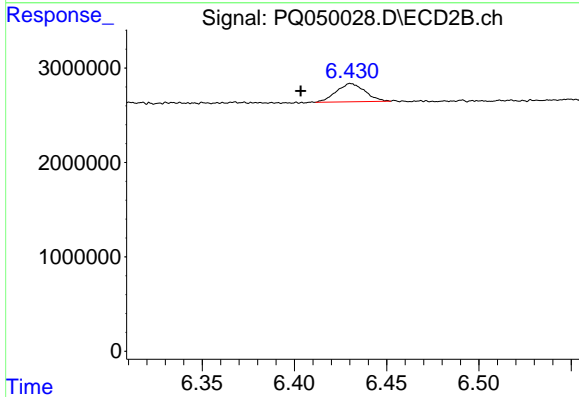
R.T.: 6.047 min
 Delta R.T.: 0.022 min
 Response: 1737085
 Conc: 34.18 ng/ml



#20 AR-1242-5

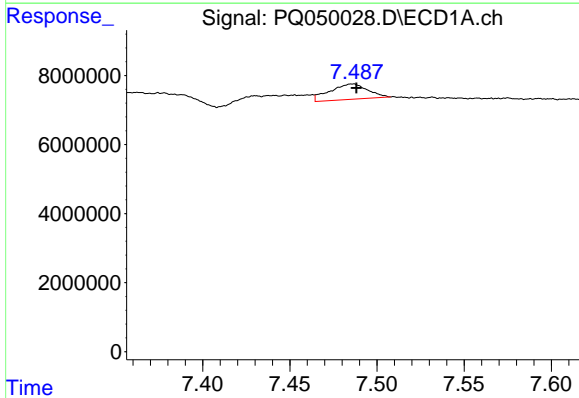
R.T.: 7.487 min
 Delta R.T.: -0.042 min
 Response: 6738432
 Conc: 34.98 ng/ml

Instrument :
 ECD_Q
 ClientSampleId :



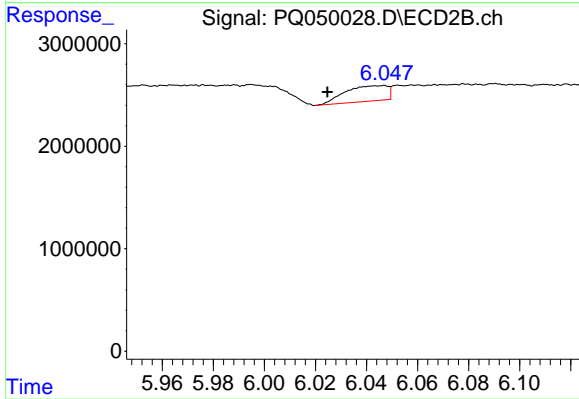
#20 AR-1242-5

R.T.: 6.430 min
 Delta R.T.: 0.027 min
 Response: 2091343
 Conc: 15.69 ng/ml



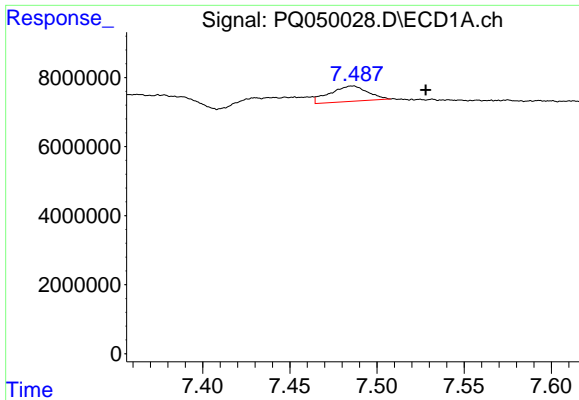
#24 AR-1248-4

R.T.: 7.487 min
 Delta R.T.: -0.001 min
 Response: 6738432
 Conc: 20.15 ng/ml



#24 AR-1248-4

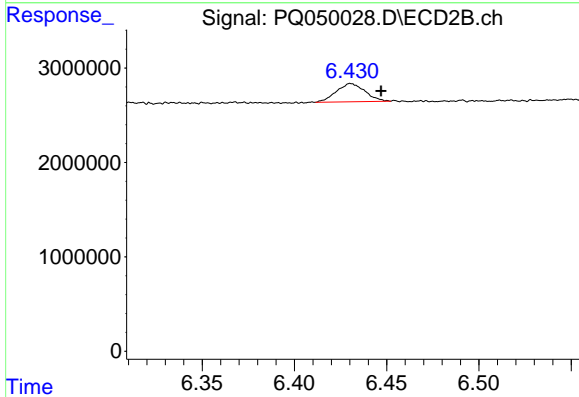
R.T.: 6.047 min
 Delta R.T.: 0.022 min
 Response: 1737085
 Conc: 10.52 ng/ml



#25 AR-1248-5

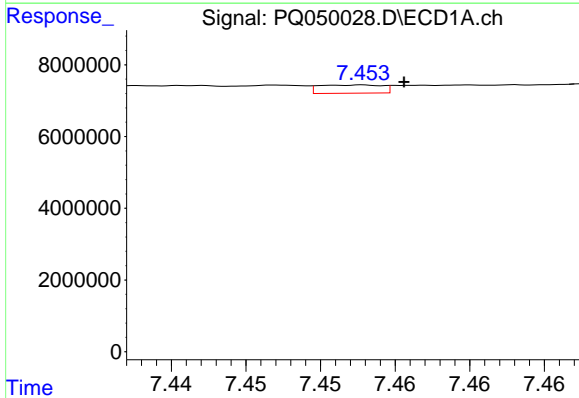
R.T.: 7.487 min
 Delta R.T.: -0.041 min
 Response: 6738432
 Conc: 21.41 ng/ml

Instrument :
 ECD_Q
 ClientSampleId :



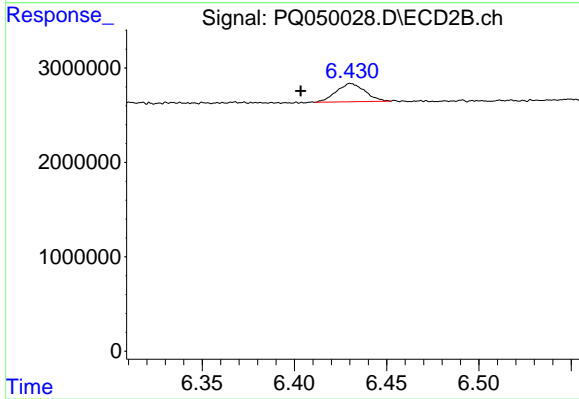
#25 AR-1248-5

R.T.: 6.430 min
 Delta R.T.: -0.017 min
 Response: 2091343
 Conc: 11.54 ng/ml



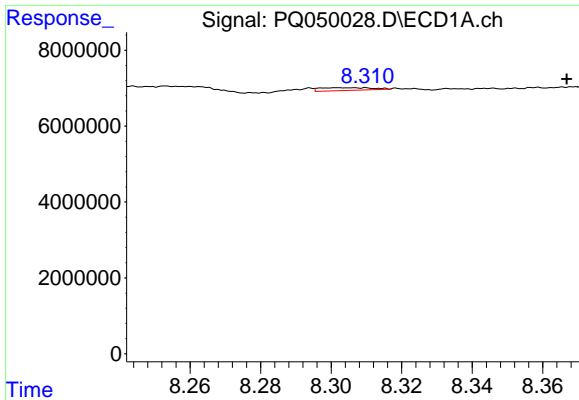
#26 AR-1254-1

R.T.: 7.453 min
 Delta R.T.: -0.003 min
 Response: 672925
 Conc: 2.04 ng/ml



#26 AR-1254-1

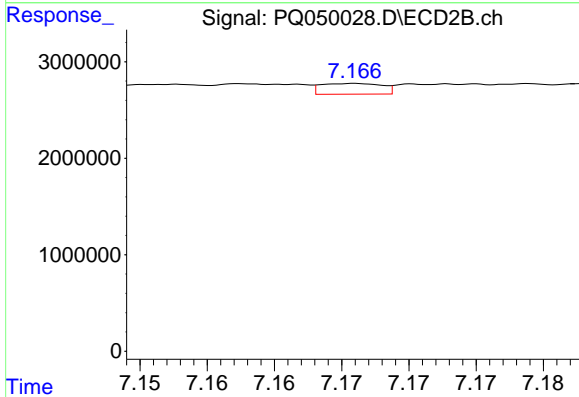
R.T.: 6.430 min
 Delta R.T.: 0.027 min
 Response: 2091343
 Conc: 7.55 ng/ml



#29 AR-1254-4

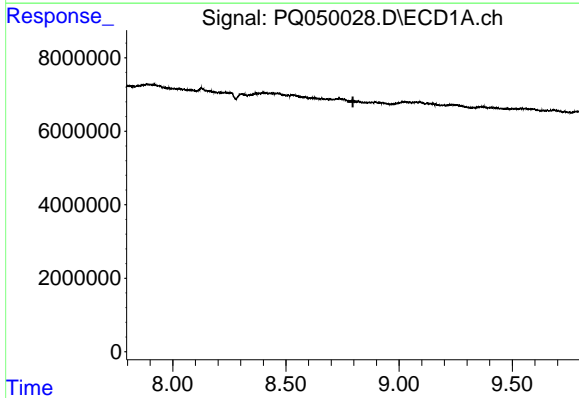
R.T.: 8.310 min
 Delta R.T.: -0.057 min
 Response: 755887
 Conc: 1.99 ng/ml

Instrument :
 ECD_Q
 ClientSampleId :



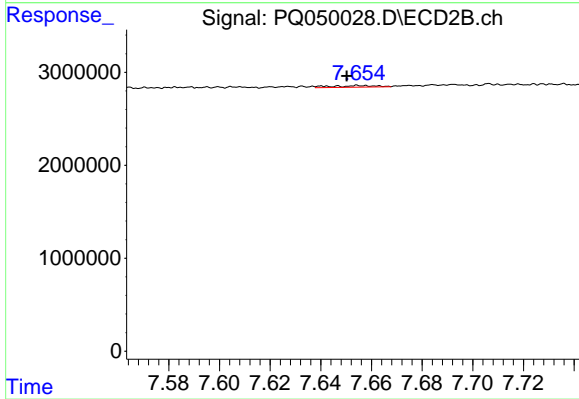
#29 AR-1254-4

R.T.: 7.166 min
 Delta R.T.: -0.055 min
 Response: 349769
 Conc: 1.16 ng/ml



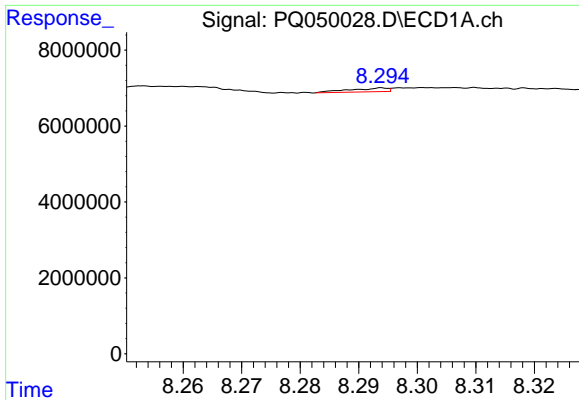
#30 AR-1254-5

R.T.: 0.000 min
 Exp R.T. : 8.796 min
 Response: 0
 Conc: N.D.



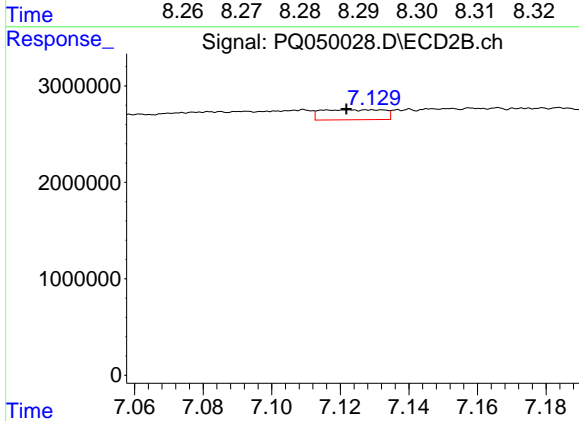
#30 AR-1254-5

R.T.: 7.654 min
 Delta R.T.: 0.004 min
 Response: 224607
 Conc: 0.56 ng/ml

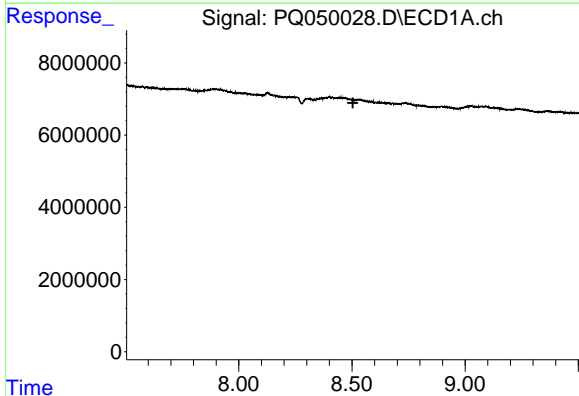


#31 AR-1260-1
 R.T.: 8.294 min
 Delta R.T.: 0.056 min
 Response: 430403
 Conc: 1.32 ng/ml

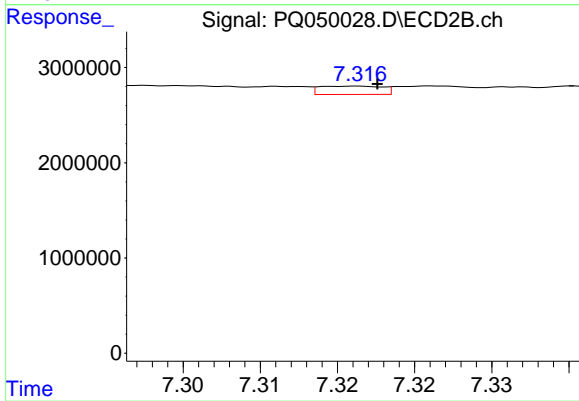
Instrument :
 ECD_Q
 ClientSampleId :



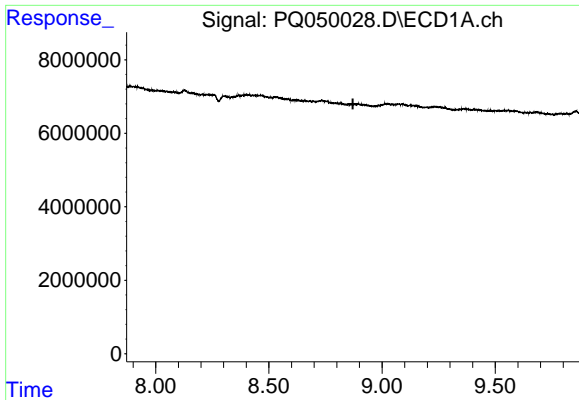
#31 AR-1260-1
 R.T.: 7.129 min
 Delta R.T.: 0.008 min
 Response: 1314579
 Conc: 5.36 ng/ml



#32 AR-1260-2
 R.T.: 0.000 min
 Exp R.T. : 8.504 min
 Response: 0
 Conc: N.D.



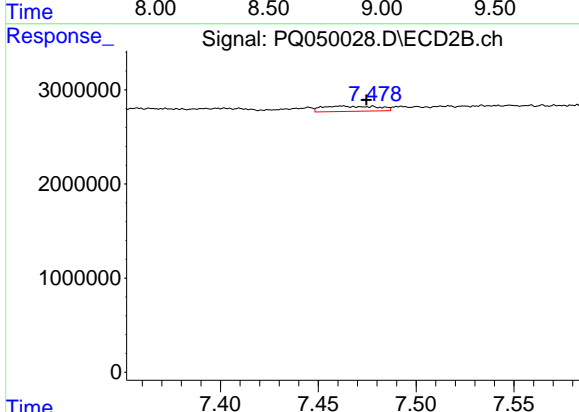
#32 AR-1260-2
 R.T.: 7.316 min
 Delta R.T.: -0.001 min
 Response: 245389
 Conc: 0.70 ng/ml



#33 AR-1260-3

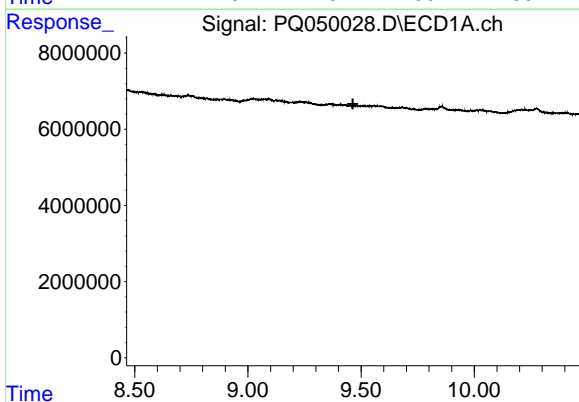
R.T.: 0.000 min
 Exp R.T. : 8.871 min
 Response: 0
 Conc: N.D.

Instrument :
 ECD_Q
 ClientSampleId :



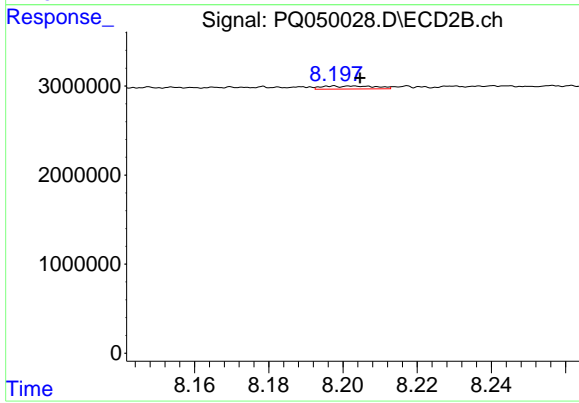
#33 AR-1260-3

R.T.: 7.463 min
 Delta R.T.: -0.012 min
 Response: 1077947
 Conc: 3.58 ng/ml



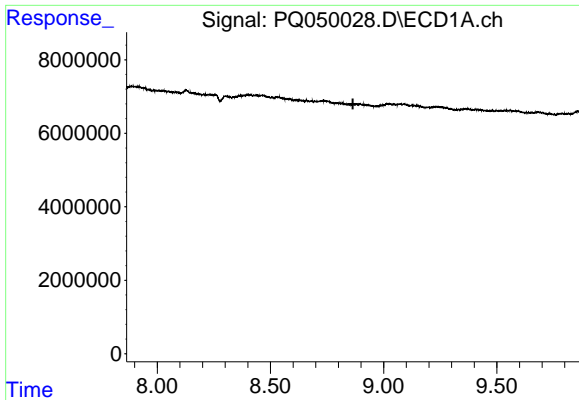
#35 AR-1260-5

R.T.: 0.000 min
 Exp R.T. : 9.464 min
 Response: 0
 Conc: N.D.



#35 AR-1260-5

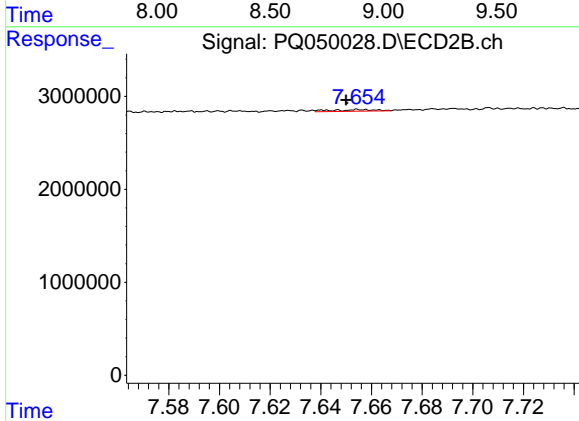
R.T.: 8.198 min
 Delta R.T.: -0.007 min
 Response: 339150
 Conc: 0.44 ng/ml



#36 AR-1262-1

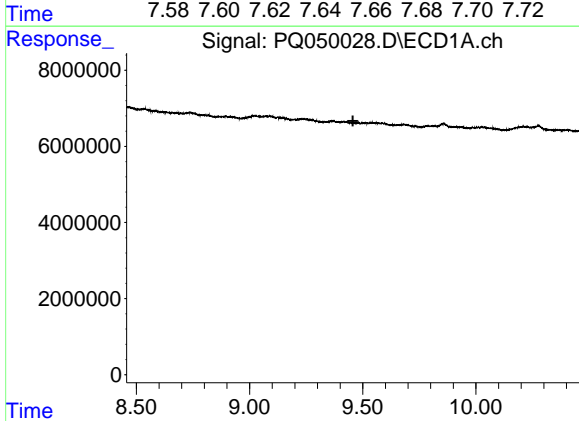
R.T.: 0.000 min
 Exp R.T. : 8.864 min
 Response: 0
 Conc: N.D.

Instrument :
 ECD_Q
 ClientSampled :



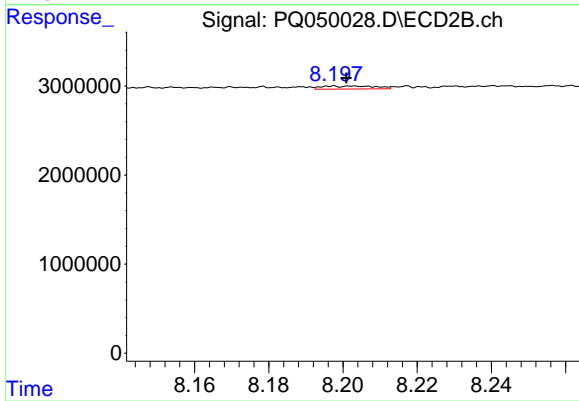
#36 AR-1262-1

R.T.: 7.654 min
 Delta R.T.: 0.004 min
 Response: 224607
 Conc: 1.08 ng/ml



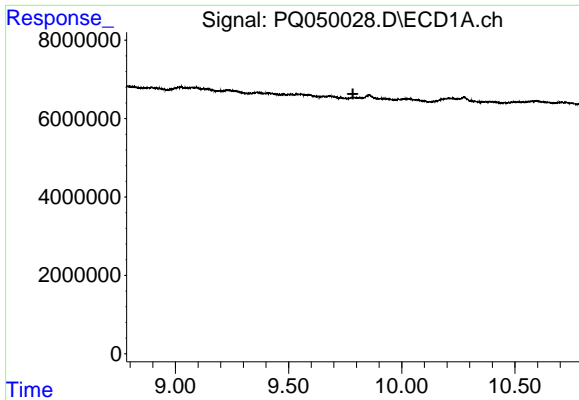
#37 AR-1262-2

R.T.: 0.000 min
 Exp R.T. : 9.457 min
 Response: 0
 Conc: N.D.



#37 AR-1262-2

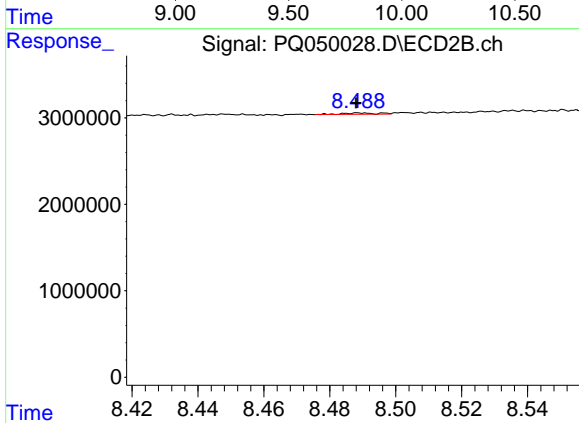
R.T.: 8.198 min
 Delta R.T.: -0.003 min
 Response: 339150
 Conc: 0.38 ng/ml



#38 AR-1262-3

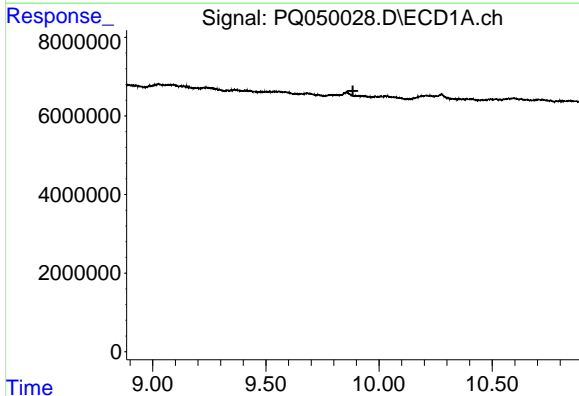
R.T.: 0.000 min
 Exp R.T.: 9.784 min
 Response: 0
 Conc: N.D.

Instrument :
 ECD_Q
 ClientSampleId :



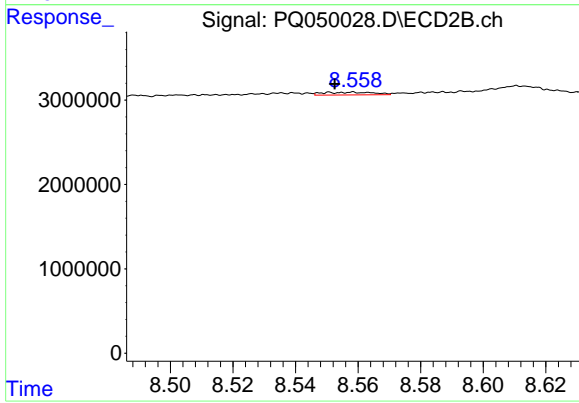
#38 AR-1262-3

R.T.: 8.489 min
 Delta R.T.: 0.000 min
 Response: 110172
 Conc: 0.30 ng/ml



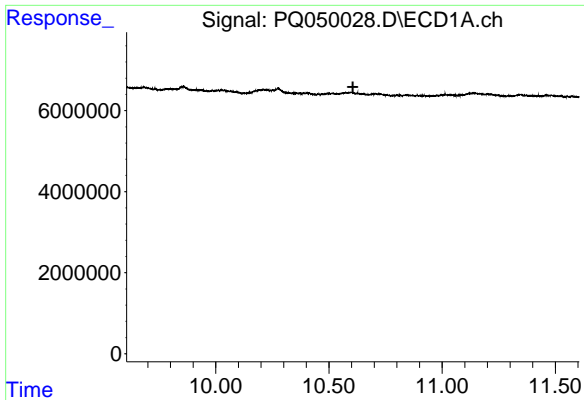
#39 AR-1262-4

R.T.: 0.000 min
 Exp R.T.: 9.885 min
 Response: 0
 Conc: N.D.



#39 AR-1262-4

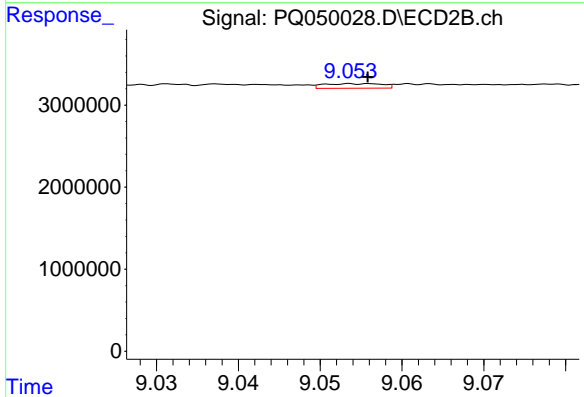
R.T.: 8.558 min
 Delta R.T.: 0.006 min
 Response: 364526
 Conc: 0.57 ng/ml



#40 AR-1262-5

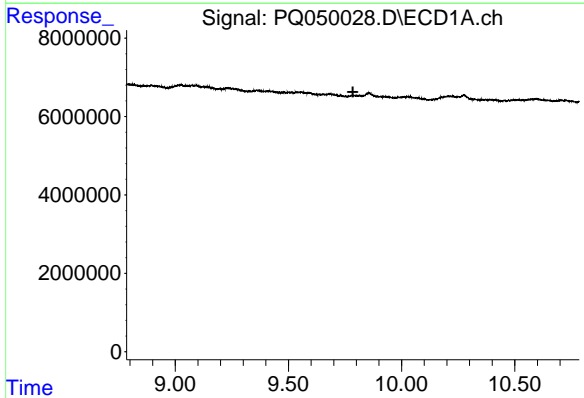
R.T.: 0.000 min
 Exp R.T. : 10.606 min
 Response: 0
 Conc: N.D.

Instrument :
 ECD_Q
 ClientSampleId :



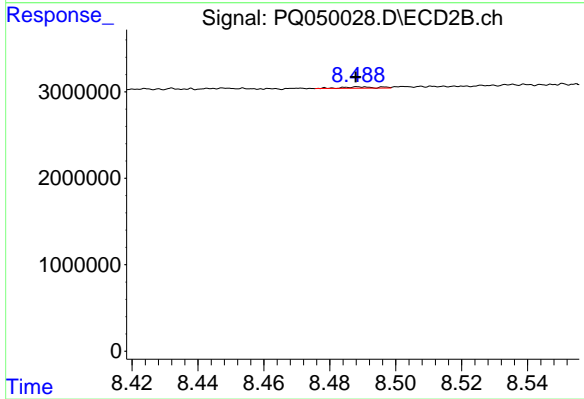
#40 AR-1262-5

R.T.: 9.054 min
 Delta R.T.: -0.002 min
 Response: 279887
 Conc: 0.84 ng/ml



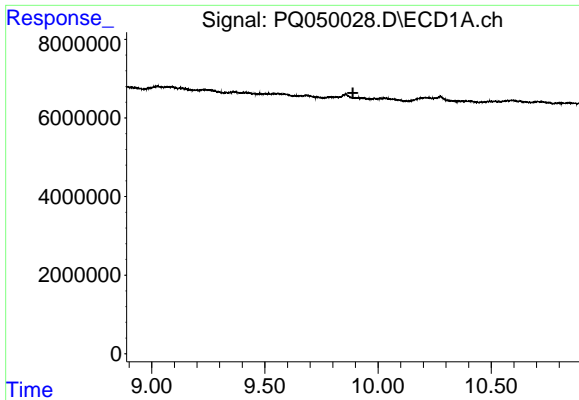
#41 AR-1268-1

R.T.: 0.000 min
 Exp R.T. : 9.785 min
 Response: 0
 Conc: N.D.



#41 AR-1268-1

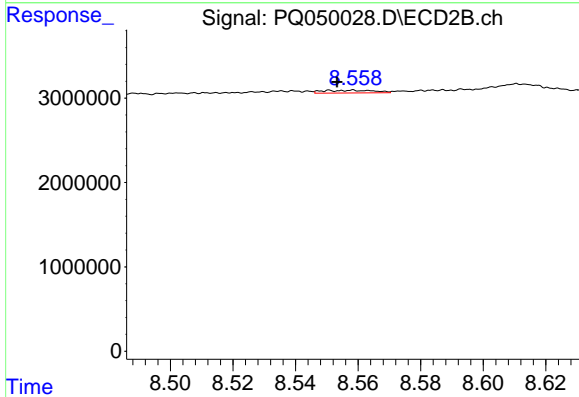
R.T.: 8.489 min
 Delta R.T.: 0.000 min
 Response: 110172
 Conc: 0.10 ng/ml



#42 AR-1268-2

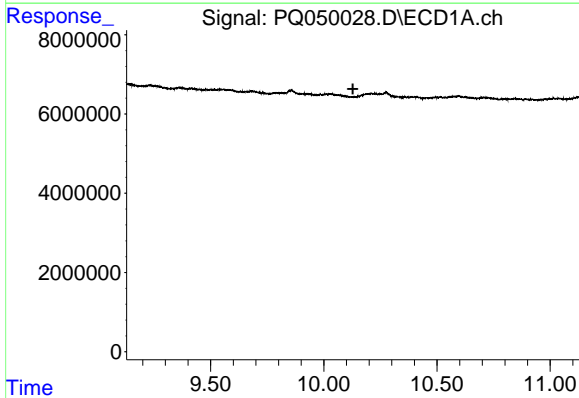
R.T.: 0.000 min
 Exp R.T.: 9.889 min
 Response: 0
 Conc: N.D.

Instrument :
 ECD_Q
 ClientSampleId :



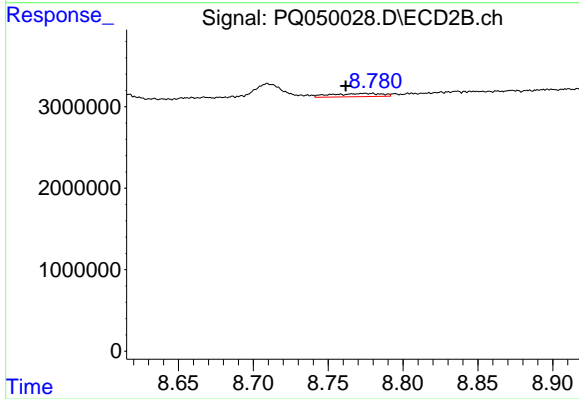
#42 AR-1268-2

R.T.: 8.558 min
 Delta R.T.: 0.005 min
 Response: 364526
 Conc: 0.38 ng/ml



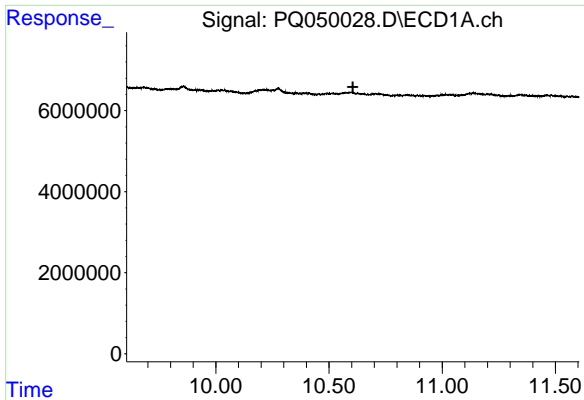
#43 AR-1268-3

R.T.: 0.000 min
 Exp R.T.: 10.128 min
 Response: 0
 Conc: N.D.



#43 AR-1268-3

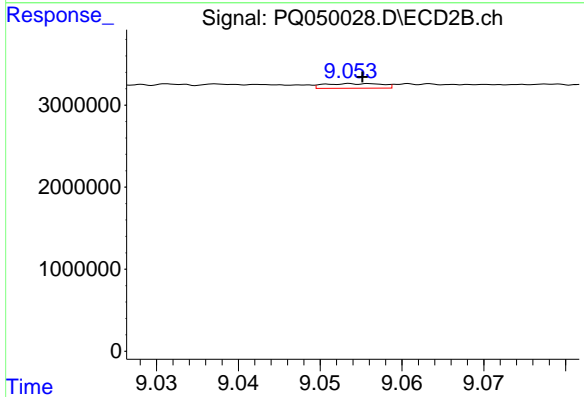
R.T.: 8.780 min
 Delta R.T.: 0.018 min
 Response: 936573
 Conc: 1.13 ng/ml



#44 AR-1268-4

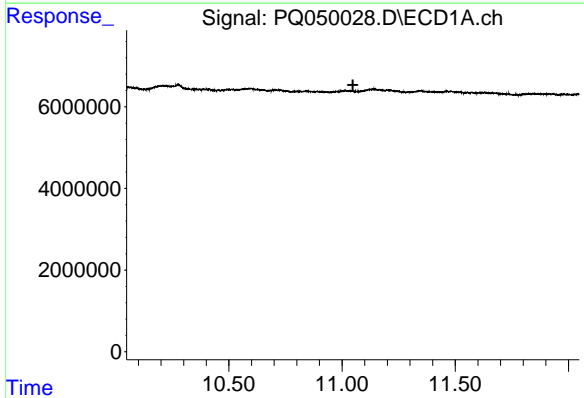
R.T.: 0.000 min
 Exp R.T. : 10.605 min
 Response: 0
 Conc: N.D.

Instrument :
 ECD_Q
 ClientSampled :



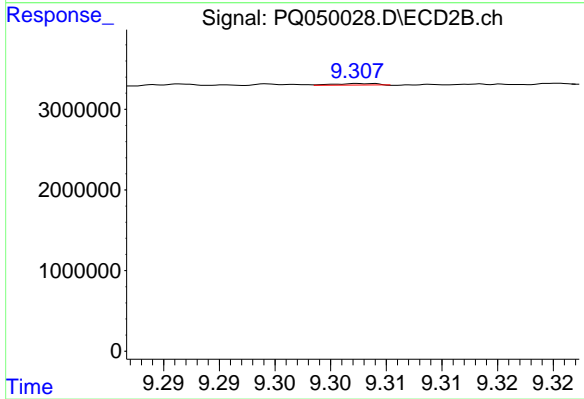
#44 AR-1268-4

R.T.: 9.054 min
 Delta R.T.: -0.001 min
 Response: 279887
 Conc: 0.74 ng/ml



#45 AR-1268-5

R.T.: 0.000 min
 Exp R.T. : 11.048 min
 Response: 0
 Conc: N.D.



#45 AR-1268-5

R.T.: 9.308 min
 Delta R.T.: -0.048 min
 Response: 150080
 Conc: 0.06 ng/ml