

Data Path : Z:\pestpcbsrv\HPCHEM1\ECD_Q\Data\PQ092622\
 Data File : PQ059298.D
 Signal(s) : Signal #1: ECD1A.ch Signal #2: ECD2B.ch
 Acq On : 27 Sep 2022 01:36
 Operator : YP\AJ
 Sample : AR1262ICC400
 Misc :
 ALS Vial : 35 Sample Multiplier: 1

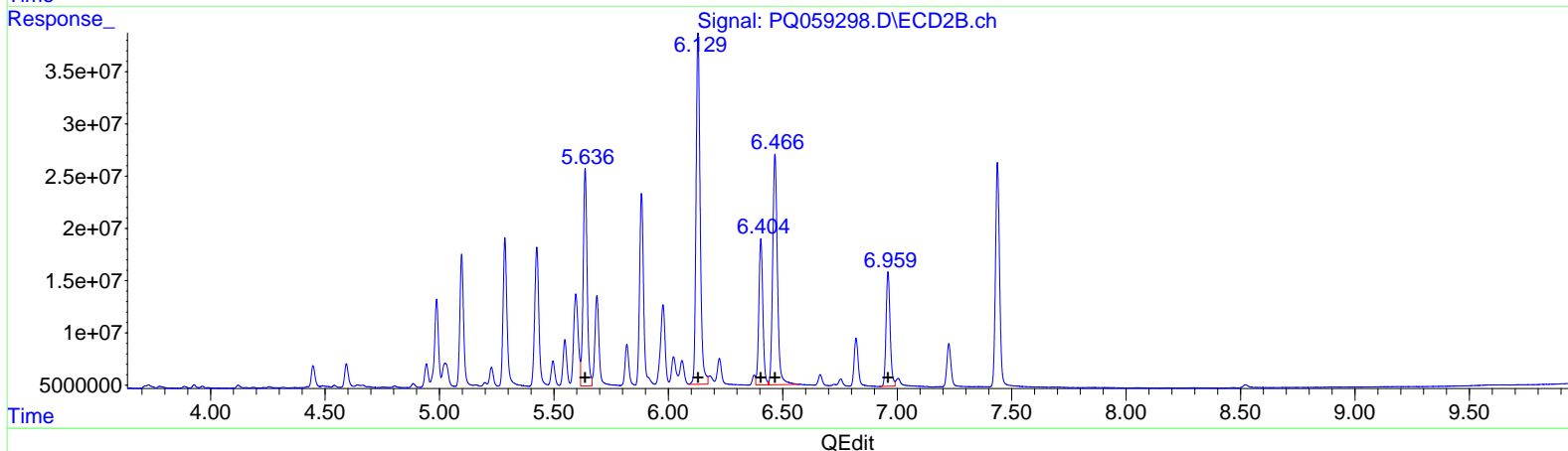
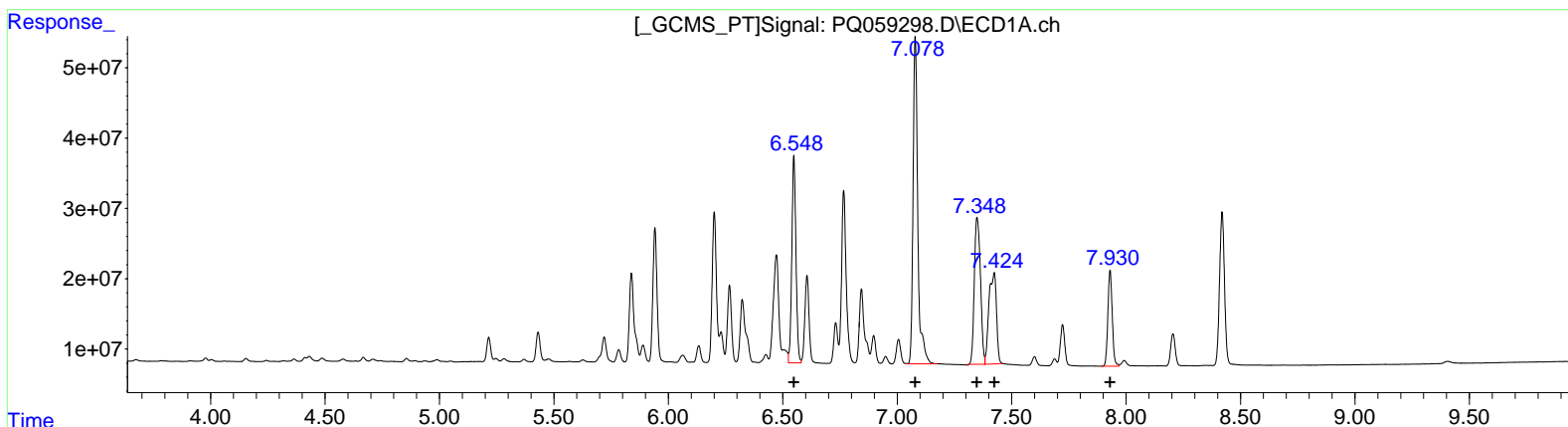
Instrument :
 ECD_Q
 LabSampleId :
 AR1262ICC400

Manual Integrations APPROVED

Reviewed By : Yogesh Patel 09/27/2022
 Supervised By : Ankita Jodhani 09/27/2022

Integration File signal 1: autoint1.e
 Integration File signal 2: autoint2.e
 Quant Time: Sep 27 04:49:01 2022
 Quant Method : Z:\pestpcbsrv\HPCHEM1\ECD_Q\Method\PQ092622CLP.M
 Quant Title : GC EXTRACTABLES
 QLast Update : Tue Sep 27 04:47:21 2022
 Response via : Initial Calibration
 Integrator: ChemStation

Volume Inj. : 1 µl
 Signal #1 Phase : ZB MR1 Signal #2 Phase: ZB MR2
 Signal #1 Info : 30Mx0.32mmx 0.5µm Signal #2 Info : 30M x 0.32mm x 0.25µm



(36) AR-1262-1 (L8)

R.T.	Response	Conc
6.55	370107324	400.00
7.08	669859081	400.00
7.35	392256186	400.00
7.42	294845292	697.39
7.93	181433087	400.00

(36) AR-1262-1 #2 (L8)

R.T.	Response	Conc
5.64	250810185	400.00
6.13	420064893	400.00
6.40	171768206	400.00
6.47	316989534	400.00
6.96	135095488	400.00

Data Path : Z:\pestpcbsrv\HPCHEM1\ECD_Q\Data\PQ092622\
 Data File : PQ059298.D
 Signal(s) : Signal #1: ECD1A.ch Signal #2: ECD2B.ch
 Acq On : 27 Sep 2022 01:36
 Operator : YP\AJ
 Sample : AR1262ICC400
 Misc :
 ALS Vial : 35 Sample Multiplier: 1

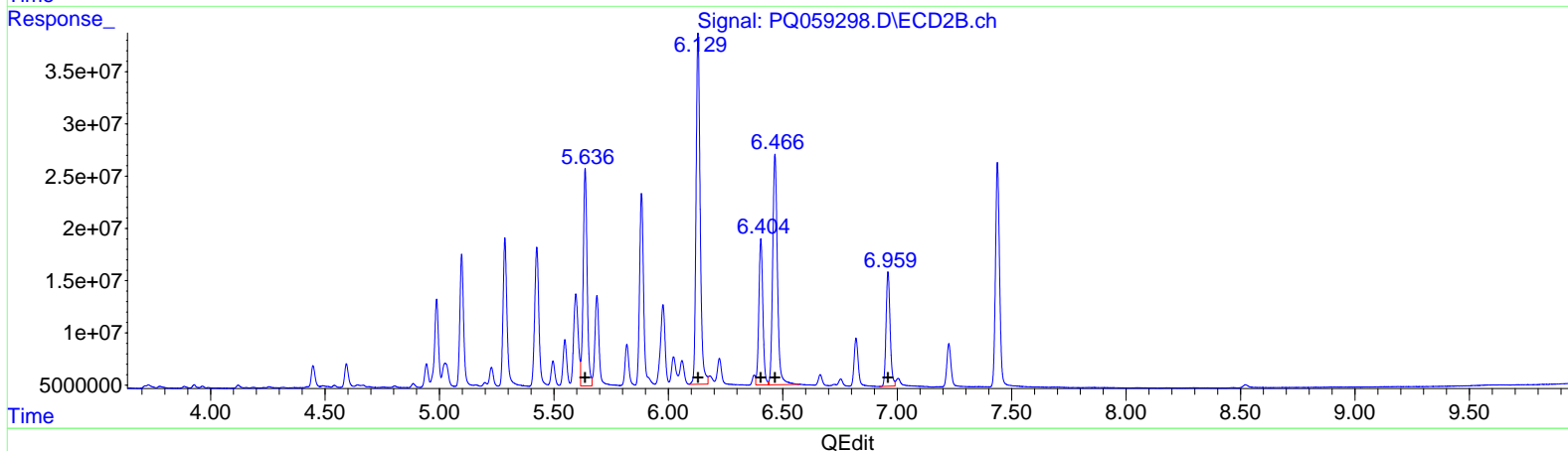
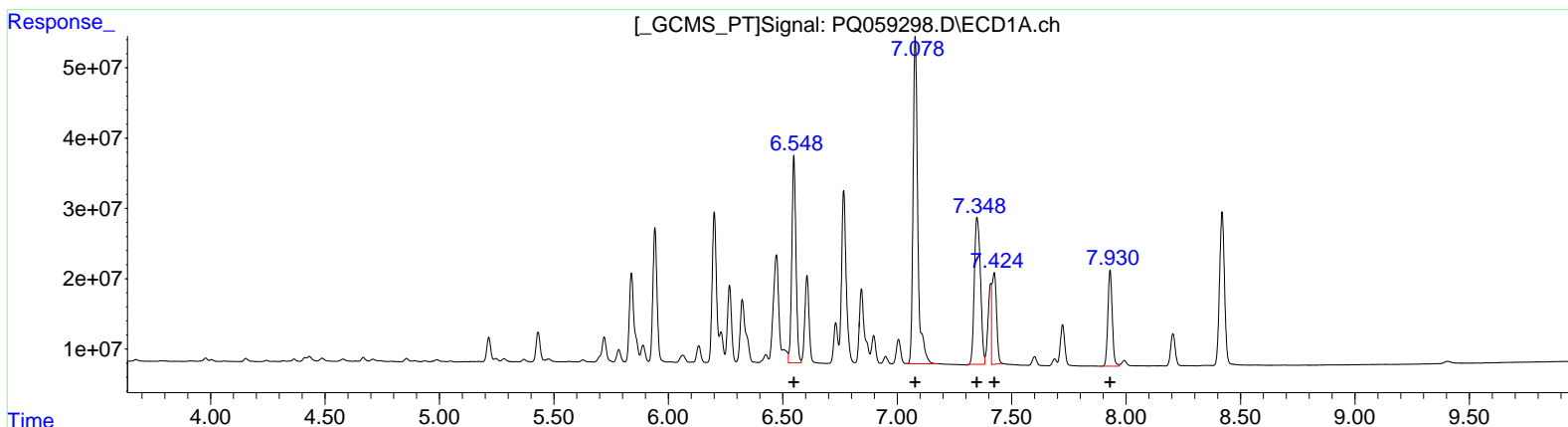
Instrument :
 ECD_Q
 LabSampleId :
 AR1262ICC400

Manual Integrations APPROVED

Reviewed By :Yogesh Patel 09/27/2022
 Supervised By :Ankita Jodhani 09/27/2022

Integration File signal 1: autoint1.e
 Integration File signal 2: autoint2.e
 Quant Time: Sep 27 04:49:01 2022
 Quant Method : Z:\pestpcbsrv\HPCHEM1\ECD_Q\Method\PQ092622CLP.M
 Quant Title : GC EXTRACTABLES
 QLast Update : Tue Sep 27 04:47:21 2022
 Response via : Initial Calibration
 Integrator: ChemStation

Volume Inj. : 1 µl
 Signal #1 Phase : ZB MR1 Signal #2 Phase: ZB MR2
 Signal #1 Info : 30Mx0.32mmx 0.5µm Signal #2 Info : 30M x 0.32mm x 0.25µm



QEdit

(36) AR-1262-1 #2 (L8)		
R.T.	Response	Conc
6.55	370107324	400.00
7.08	669859081	400.00
7.35	392256186	400.00
7.42	180766106	427.56
7.93	181433087	400.00
(36) AR-1262-1 #2 (L8)		
R.T.	Response	Conc
5.64	250810185	400.00
6.13	420064893	400.00
6.40	171768206	400.00
6.47	316989534	400.00
6.96	135095488	400.00