

Data Path : Z:\pestpcbsrv\HPCHEM1\ECD\_Q\Data\PQ092623\  
 Data File : PQ063379.D  
 Signal(s) : Signal #1: ECD1A.ch Signal #2: ECD2B.ch  
 Acq On : 26 Sep 2023 19:06  
 Operator : YP\AJ  
 Sample : 04600-02  
 Misc :  
 ALS Vial : 21 Sample Multiplier: 1

Instrument :  
 ECD\_Q  
 ClientSampleId :  
 COMP-2

Integration File signal 1: autoint1.e  
 Integration File signal 2: autoint2.e  
 Quant Time: Sep 27 01:39:28 2023  
 Quant Method : Z:\pestpcbsrv\HPCHEM1\ECD\_Q\Method\PQ091923.M  
 Quant Title : GC EXTRACTABLES  
 QLast Update : Wed Sep 20 05:26:41 2023  
 Response via : Initial Calibration  
 Integrator: ChemStation

Volume Inj. : 2 µl  
 Signal #1 Phase : ZB-MR1 Signal #2 Phase: ZB-MR2  
 Signal #1 Info : 30Mx0.32mmx 0.50µ Signal #2 Info : 30M x 0.32mm x 0.25µm

Compound	RT#1	RT#2	Resp#1	Resp#2	ng/ml	ng/ml
-----						
System Monitoring Compounds						
1) SA Tetrachlo...	3.471	2.796	49948368	33490073	10.665	9.690
2) SA Decachlor...	8.700	7.583	67867031	45424665	19.421	12.636 #
Target Compounds						
31) L7 AR-1260-1	6.159	5.228	99098023	65569470	411.982	324.725
32) L7 AR-1260-2	6.418	5.417	119.3E6	80569845	421.228	329.266
33) L7 AR-1260-3	6.772	5.557	95804486	73024356	471.296	308.805 #
34) L7 AR-1260-4	6.990	6.018	109.8E6	63780105	460.579	334.061 #
35) L7 AR-1260-5	7.301	6.263	238.9E6	150.6E6	533.533	343.876 #
-----						

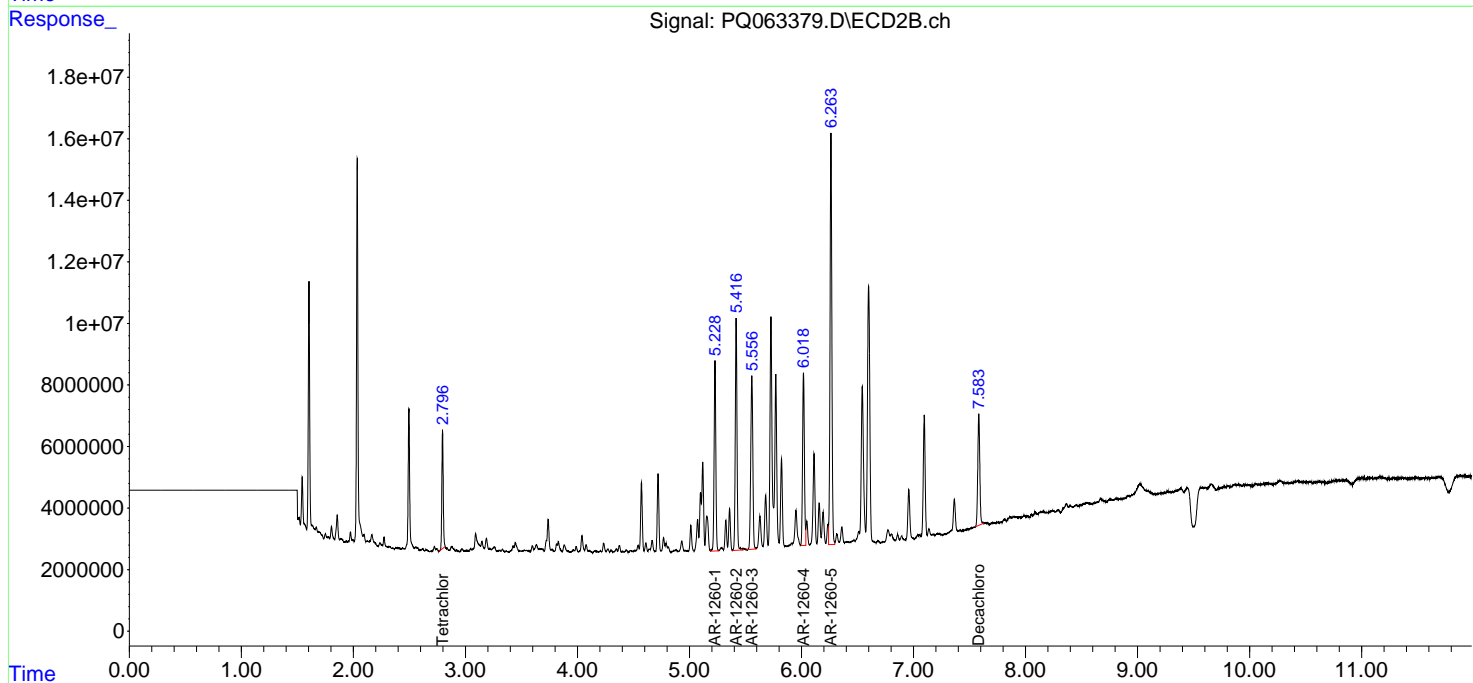
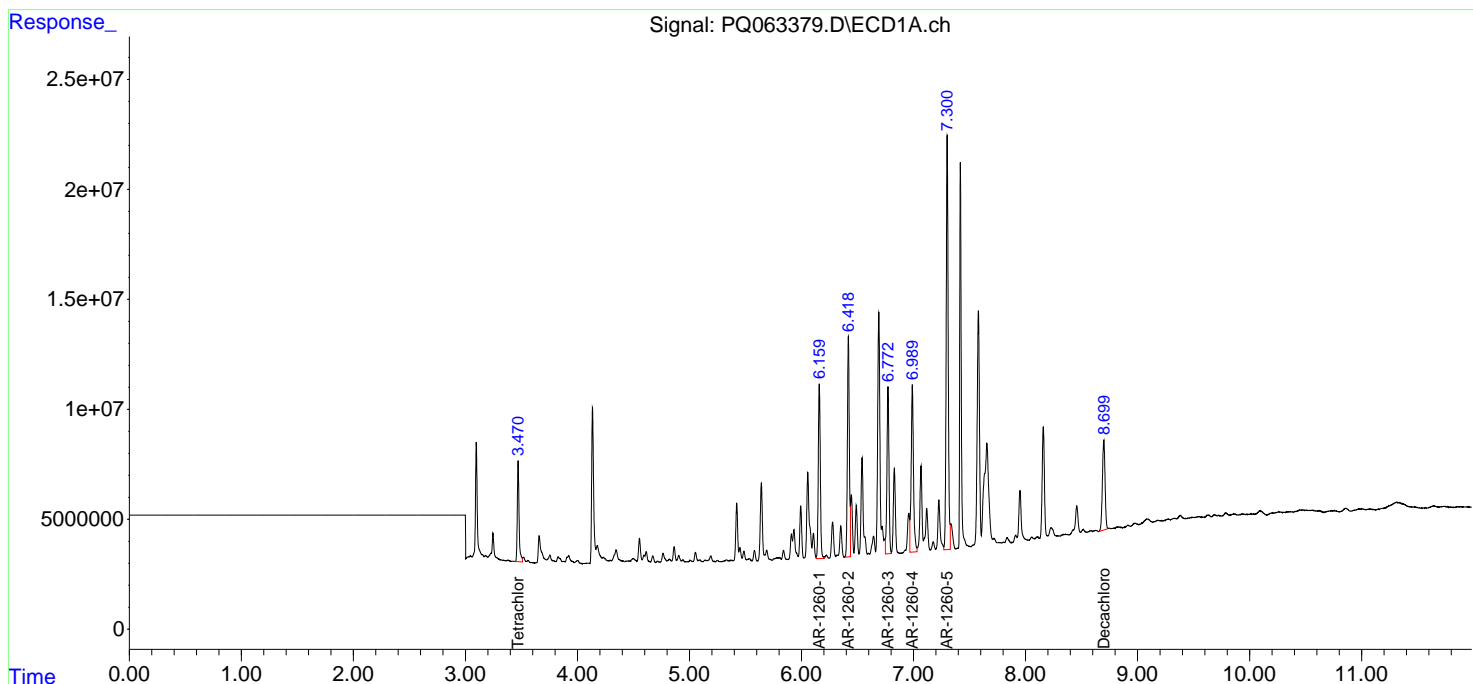
(f)=RT Delta > 1/2 Window (#)=Amounts differ by > 25% (m)=manual int.

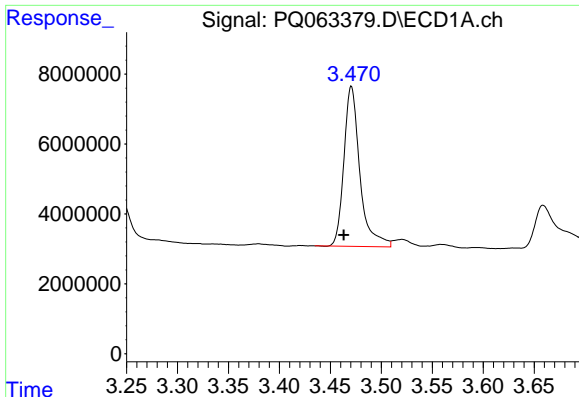
Data Path : Z:\pestpcbsrv\HPCHEM1\ECD\_Q\Data\PQ092623\  
 Data File : PQ063379.D  
 Signal(s) : Signal #1: ECD1A.ch Signal #2: ECD2B.ch  
 Acq On : 26 Sep 2023 19:06  
 Operator : YP\AJ  
 Sample : 04600-02  
 Misc :  
 ALS Vial : 21 Sample Multiplier: 1

Instrument :  
 ECD\_Q  
 ClientSampleId :  
 COMP-2

Integration File signal 1: autoint1.e  
 Integration File signal 2: autoint2.e  
 Quant Time: Sep 27 01:39:28 2023  
 Quant Method : Z:\pestpcbsrv\HPCHEM1\ECD\_Q\Method\PQ091923.M  
 Quant Title : GC EXTRACTABLES  
 QLast Update : Wed Sep 20 05:26:41 2023  
 Response via : Initial Calibration  
 Integrator: ChemStation

Volume Inj. : 2 µl  
 Signal #1 Phase : ZB-MR1 Signal #2 Phase: ZB-MR2  
 Signal #1 Info : 30Mx0.32mmx 0.50µ Signal #2 Info : 30M x 0.32mm x 0.25µm

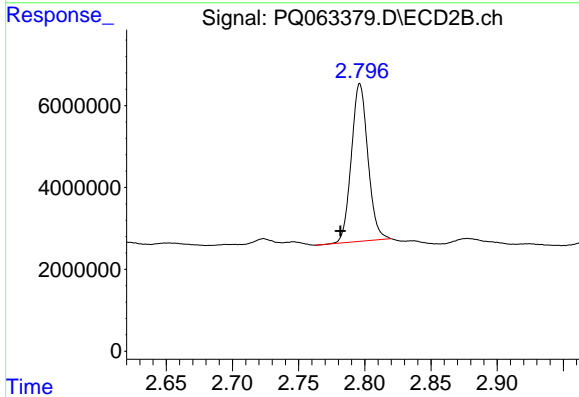




#1 Tetrachloro-m-xylene

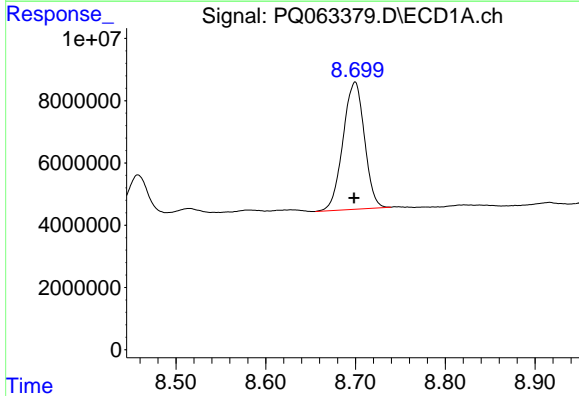
R.T.: 3.471 min  
 Delta R.T.: 0.008 min  
 Response: 49948368  
 Conc: 10.66 ng/ml

Instrument :  
 ECD\_Q  
 ClientSampleId :  
 COMP-2



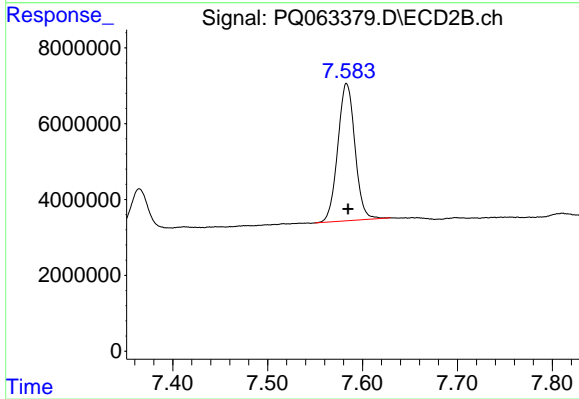
#1 Tetrachloro-m-xylene

R.T.: 2.796 min  
 Delta R.T.: 0.015 min  
 Response: 33490073  
 Conc: 9.69 ng/ml



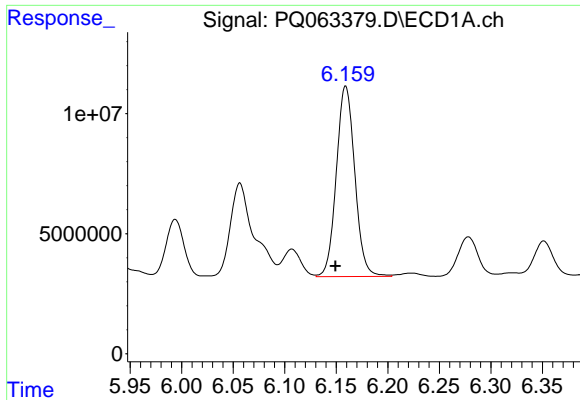
#2 Decachlorobiphenyl

R.T.: 8.700 min  
 Delta R.T.: 0.001 min  
 Response: 67867031  
 Conc: 19.42 ng/ml



#2 Decachlorobiphenyl

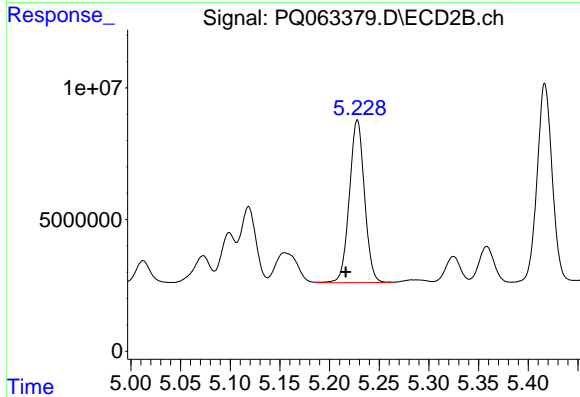
R.T.: 7.583 min  
 Delta R.T.: -0.001 min  
 Response: 45424665  
 Conc: 12.64 ng/ml



#31 AR-1260-1

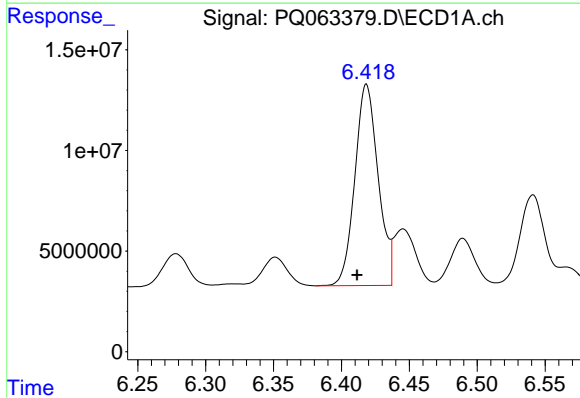
R.T.: 6.159 min  
 Delta R.T.: 0.010 min  
 Response: 99098023  
 Conc: 411.98 ng/ml

Instrument :  
 ECD\_Q  
 ClientSampleId :  
 COMP-2



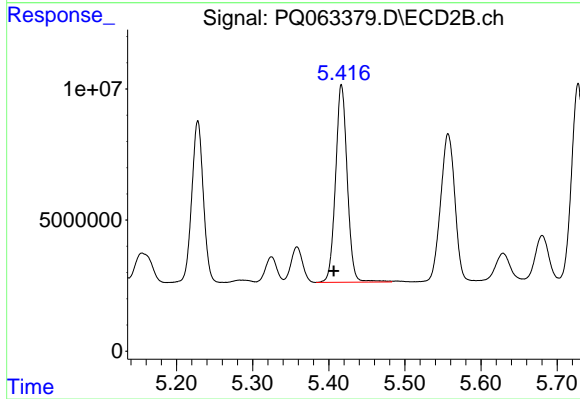
#31 AR-1260-1

R.T.: 5.228 min  
 Delta R.T.: 0.012 min  
 Response: 65569470  
 Conc: 324.72 ng/ml



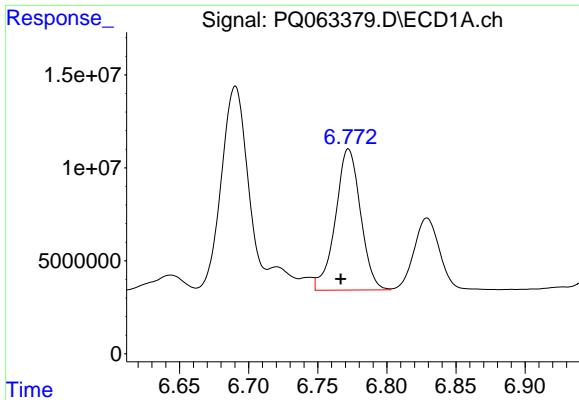
#32 AR-1260-2

R.T.: 6.418 min  
 Delta R.T.: 0.007 min  
 Response: 119345324  
 Conc: 421.23 ng/ml



#32 AR-1260-2

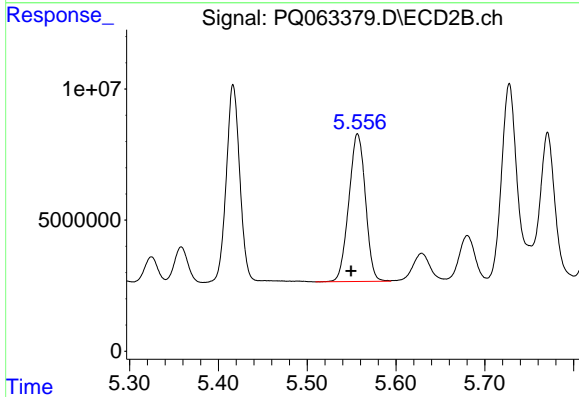
R.T.: 5.417 min  
 Delta R.T.: 0.010 min  
 Response: 80569845  
 Conc: 329.27 ng/ml



#33 AR-1260-3

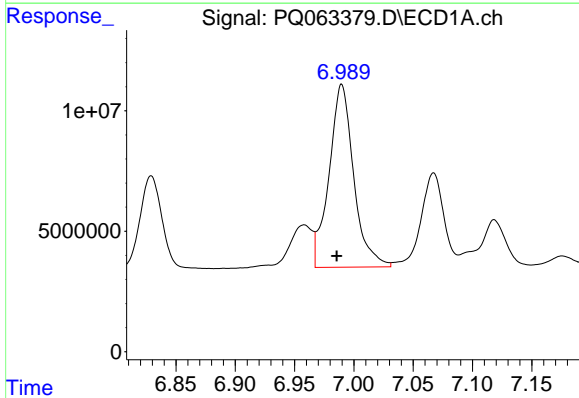
R.T.: 6.772 min  
 Delta R.T.: 0.006 min  
 Response: 95804486  
 Conc: 471.30 ng/ml

Instrument :  
 ECD\_Q  
 ClientSampleId :  
 COMP-2



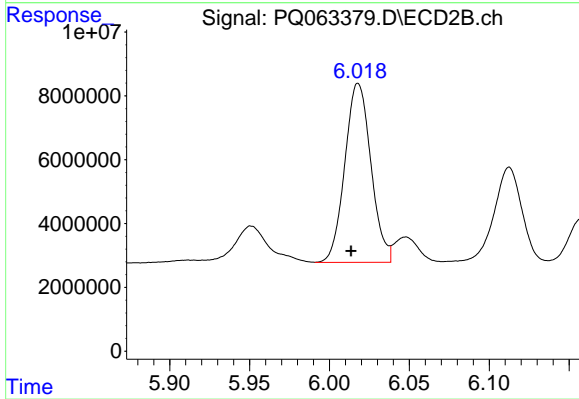
#33 AR-1260-3

R.T.: 5.557 min  
 Delta R.T.: 0.007 min  
 Response: 73024356  
 Conc: 308.80 ng/ml



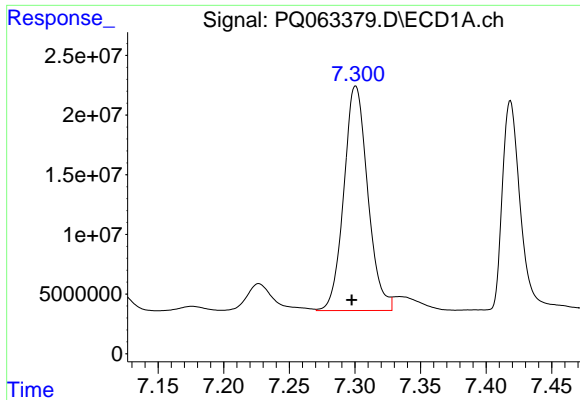
#34 AR-1260-4

R.T.: 6.990 min  
 Delta R.T.: 0.004 min  
 Response: 109792663  
 Conc: 460.58 ng/ml



#34 AR-1260-4

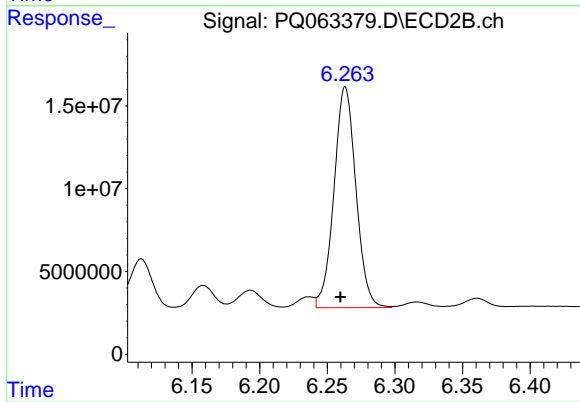
R.T.: 6.018 min  
 Delta R.T.: 0.004 min  
 Response: 63780105  
 Conc: 334.06 ng/ml



#35 AR-1260-5

R.T.: 7.301 min  
Delta R.T.: 0.003 min  
Response: 238858509  
Conc: 533.53 ng/ml

Instrument :  
ECD\_Q  
ClientSampleId :  
COMP-2



#35 AR-1260-5

R.T.: 6.263 min  
Delta R.T.: 0.004 min  
Response: 150594146  
Conc: 343.88 ng/ml