

Data Path : Z:\pestpcbsrv\HPCHEM1\ECD_Q\Data\PQ092719\
 Data File : PQ043867.D
 Signal(s) : Signal #1: ECD1A.ch Signal #2: ECD2B.ch
 Acq On : 27 Sep 2019 13:25
 Operator : SM\AJ
 Sample : K5050-14
 Misc :
 ALS Vial : 20 Sample Multiplier: 1

Instrument :
 ECD_Q
 ClientSampleId :
 JLMD2

Integration File signal 1: autoint1.e
 Integration File signal 2: autoint2.e
 Quant Time: Sep 28 00:15:40 2019
 Quant Method : Z:\pestpcbsrv\HPCHEM1\ECD_Q\Method\PQ092419CLP.M
 Quant Title : GC EXTRACTABLES
 QLast Update : Tue Sep 24 07:41:41 2019
 Response via : Initial Calibration
 Integrator: ChemStation

Volume Inj. : 1 µl
 Signal #1 Phase : ZB MR2 Signal #2 Phase: ZB MR2
 Signal #1 Info : 30Mx0.32mmx 0.5µm Signal #2 Info : 30M x 0.32mm x 0.25µm

Compound	RT#1	RT#2	Resp#1	Resp#2	ng/ml	ng/ml

System Monitoring Compounds						
1) SA Tetrachlo...	5.224	4.400	76989562	45702276	41.040	45.914
2) SA Decachlor...	11.393	9.856	284.4E6	100.9E6	45.005	47.933
Target Compounds						
9) L2 AR-1221-2	0.000	4.764	0	960455	N.D.	99.112 #
10) L2 AR-1221-3	0.000	4.910	0	592706	N.D.	18.682 #
11) L3 AR-1232-1	0.000	4.910	0	592706	N.D.	21.517 #
20) L4 AR-1242-5	0.000	6.506	0	910335	N.D.	26.225 #
26) L6 AR-1254-1	0.000	6.506	0	910335	N.D.	12.039 #
29) L6 AR-1254-4	0.000	7.378	0	607490	N.D.	7.610 #
31) L7 AR-1260-1	0.000	7.303	0	3029713	N.D.	51.912 #
32) L7 AR-1260-2	0.000	7.483	0	985408	N.D.	13.062 #
35) L7 AR-1260-5	0.000	8.407	0	1467730	N.D.	9.581 #
37) L8 AR-1262-2	0.000	8.407	0	1467730	N.D.	7.003 #
38) L8 AR-1262-3	0.000	8.667	0	319292	N.D.	3.594 #
41) L9 AR-1268-1	0.000	8.667	0	319292	N.D.	1.233 #
43) L9 AR-1268-3	0.000	8.951	0	1495703	N.D.	7.029 #
45) L9 AR-1268-5	11.031	9.574	2015403	1030244	0.791	1.159 #

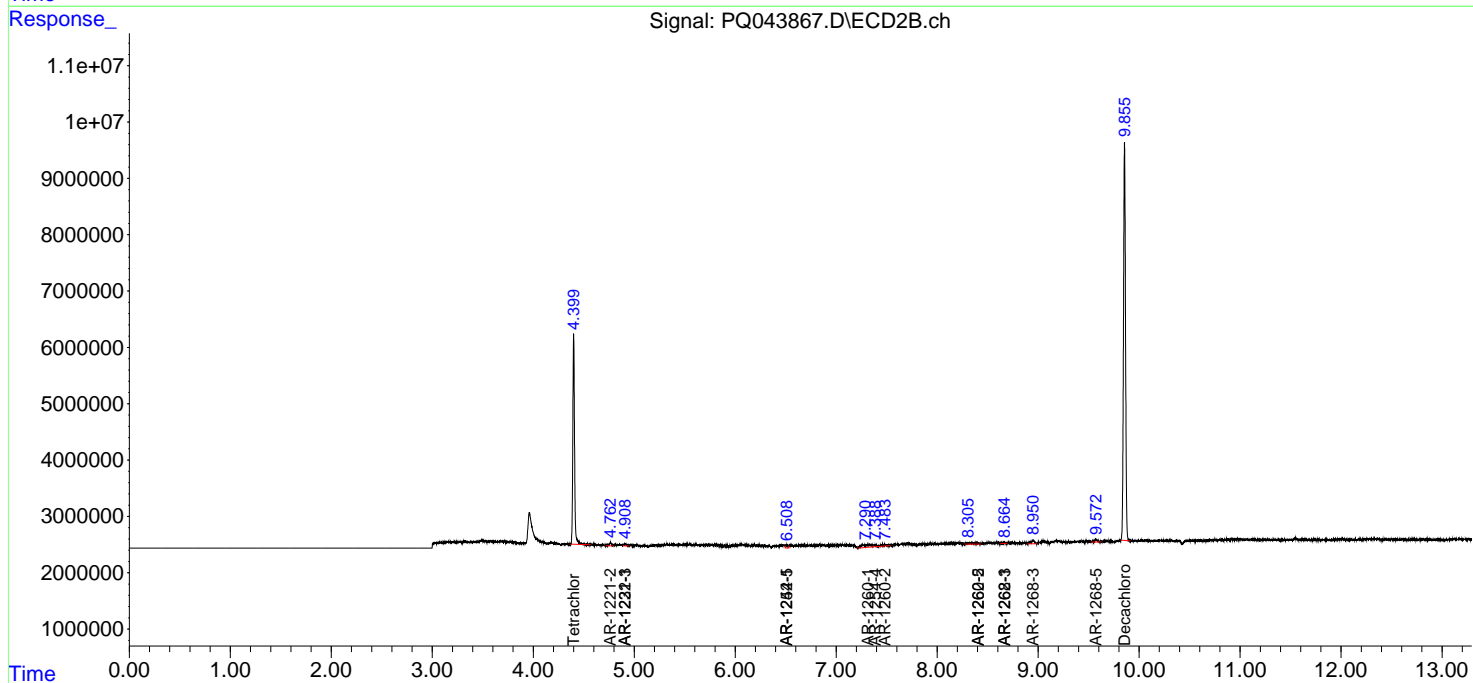
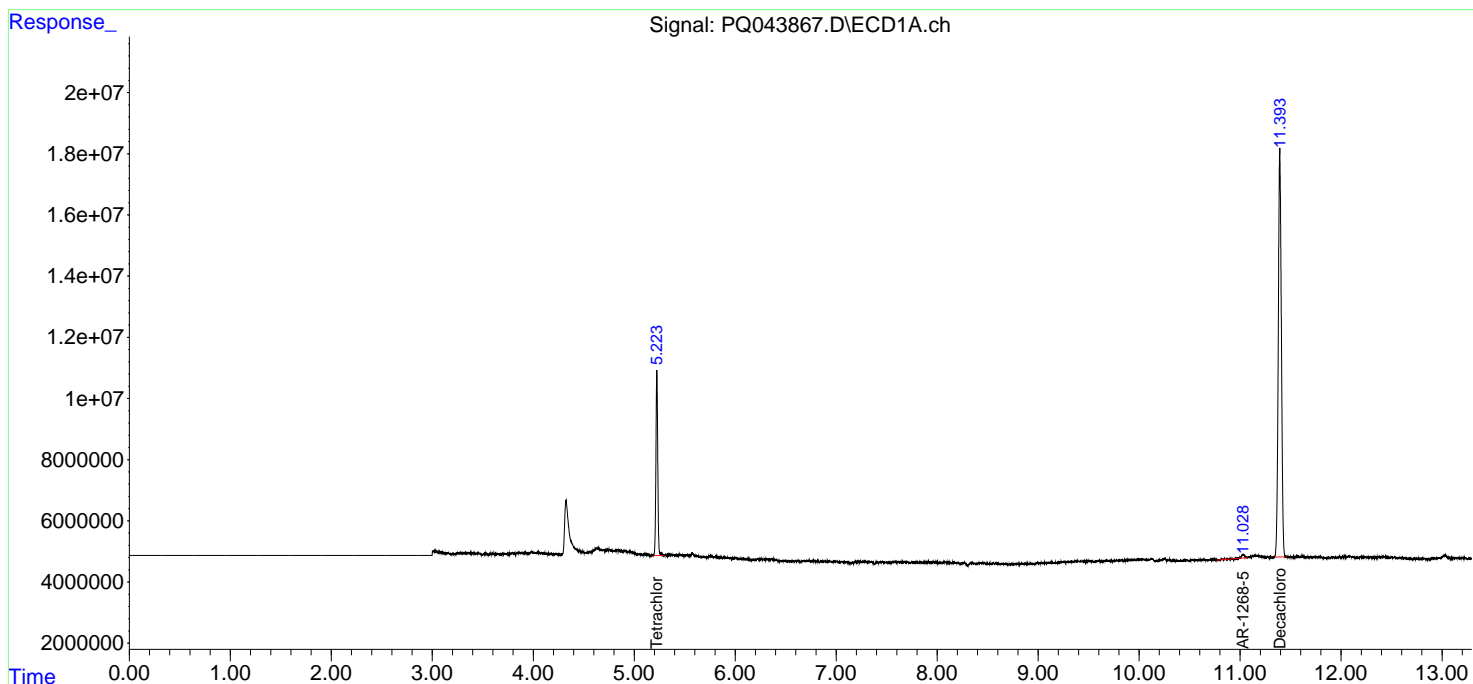
(f)=RT Delta > 1/2 Window (#)=Amounts differ by > 25% (m)=manual int.

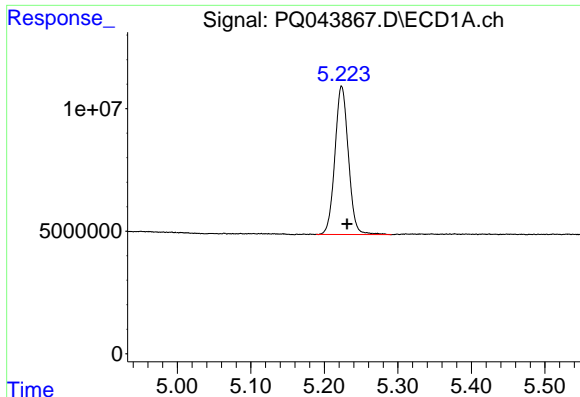
Data Path : Z:\pestpcbsrv\HPCHEM1\ECD_Q\Data\PQ092719\
 Data File : PQ043867.D
 Signal(s) : Signal #1: ECD1A.ch Signal #2: ECD2B.ch
 Acq On : 27 Sep 2019 13:25
 Operator : SM\AJ
 Sample : K5050-14
 Misc :
 ALS Vial : 20 Sample Multiplier: 1

Instrument :
 ECD_Q
 ClientSampled :
 JLMD2

Integration File signal 1: autoint1.e
 Integration File signal 2: autoint2.e
 Quant Time: Sep 28 00:15:40 2019
 Quant Method : Z:\pestpcbsrv\HPCHEM1\ECD_Q\Method\PQ092419CLP.M
 Quant Title : GC EXTRACTABLES
 QLast Update : Tue Sep 24 07:41:41 2019
 Response via : Initial Calibration
 Integrator: ChemStation

Volume Inj. : 1 µl
 Signal #1 Phase : ZB MR1 Signal #2 Phase: ZB MR2
 Signal #1 Info : 30Mx0.32mmx 0.5µm Signal #2 Info : 30M x 0.32mm x 0.25µm

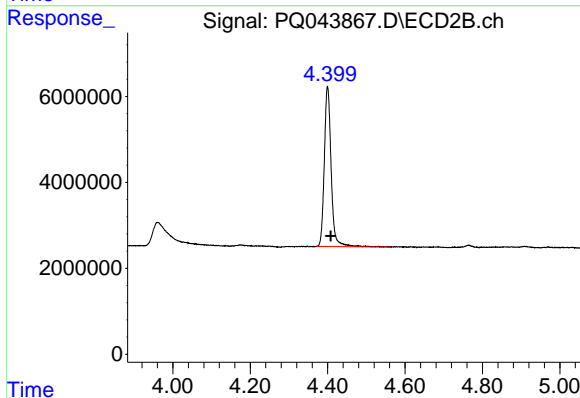




#1 Tetrachloro-m-xylene

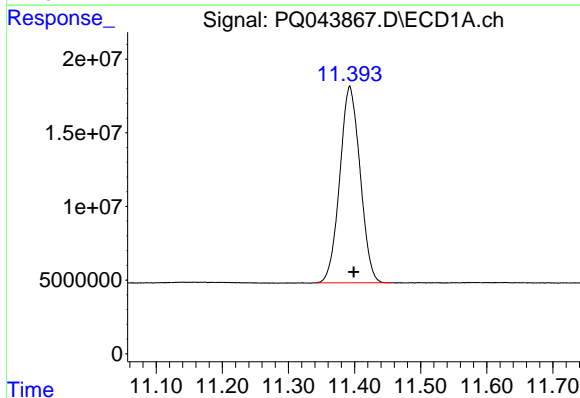
R.T.: 5.224 min
 Delta R.T.: -0.007 min
 Response: 76989562
 Conc: 41.04 ng/ml

Instrument :
 ECD_Q
 ClientSampleId :
 JLMD2



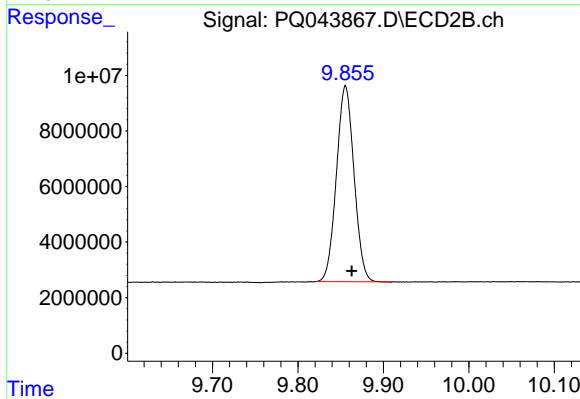
#1 Tetrachloro-m-xylene

R.T.: 4.400 min
 Delta R.T.: -0.008 min
 Response: 45702276
 Conc: 45.91 ng/ml



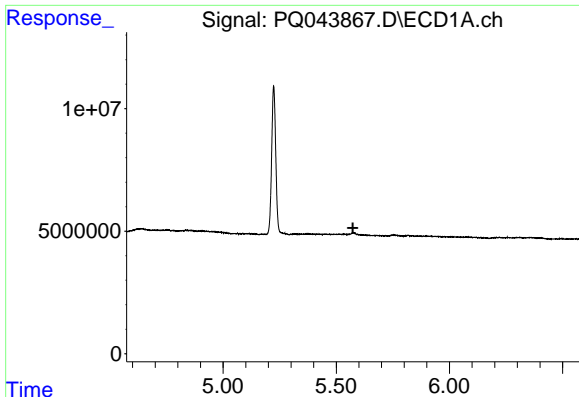
#2 Decachlorobiphenyl

R.T.: 11.393 min
 Delta R.T.: -0.006 min
 Response: 284425317
 Conc: 45.01 ng/ml



#2 Decachlorobiphenyl

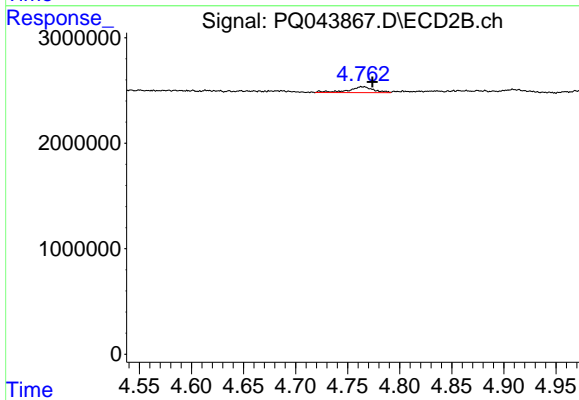
R.T.: 9.856 min
 Delta R.T.: -0.007 min
 Response: 100926407
 Conc: 47.93 ng/ml



#9 AR-1221-2

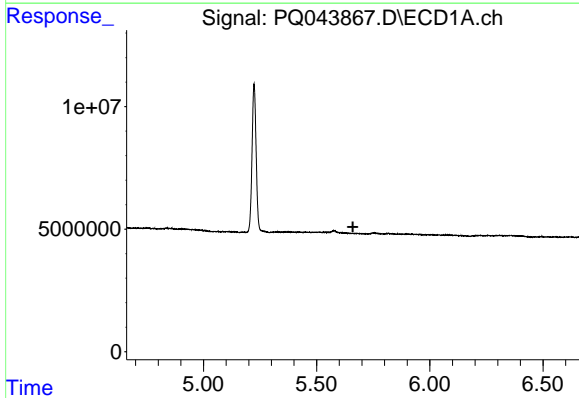
R.T.: 0.000 min
 Exp R.T. : 5.573 min
 Response: 0
 Conc: N.D.

Instrument :
 ECD_Q
 ClientSampleId :
 JLMD2



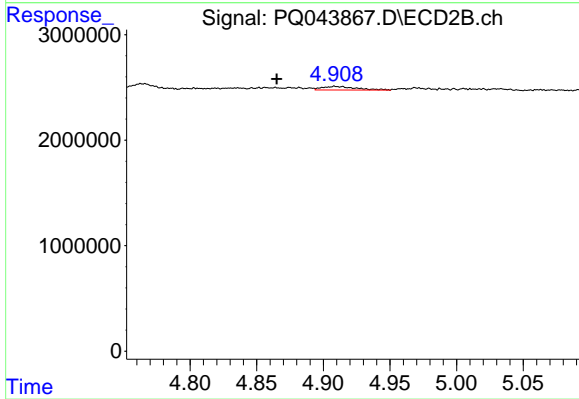
#9 AR-1221-2

R.T.: 4.764 min
 Delta R.T.: -0.009 min
 Response: 960455
 Conc: 99.11 ng/ml



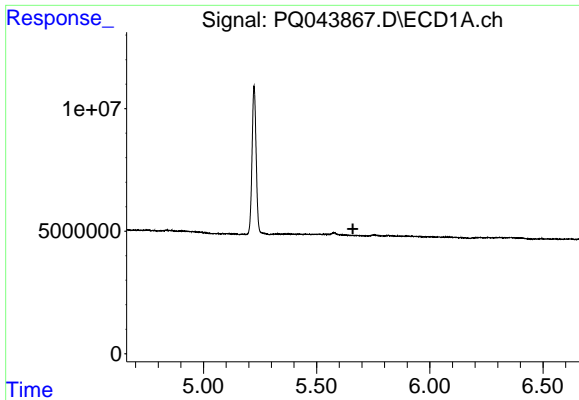
#10 AR-1221-3

R.T.: 0.000 min
 Exp R.T. : 5.660 min
 Response: 0
 Conc: N.D.



#10 AR-1221-3

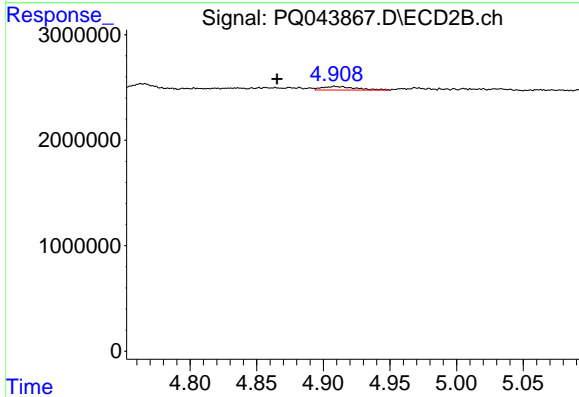
R.T.: 4.910 min
 Delta R.T.: 0.044 min
 Response: 592706
 Conc: 18.68 ng/ml



#11 AR-1232-1

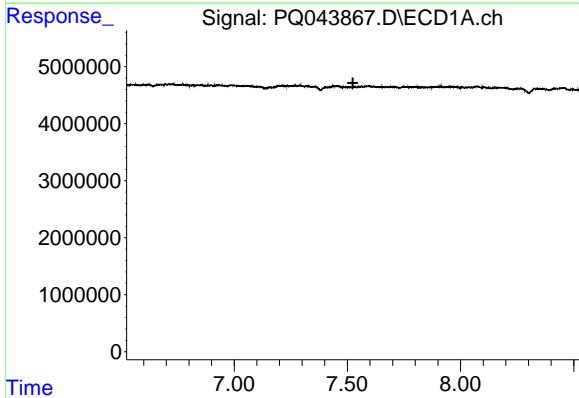
R.T.: 0.000 min
 Exp R.T. : 5.660 min
 Response: 0
 Conc: N.D.

Instrument :
 ECD_Q
 ClientSampled :
 JLMD2



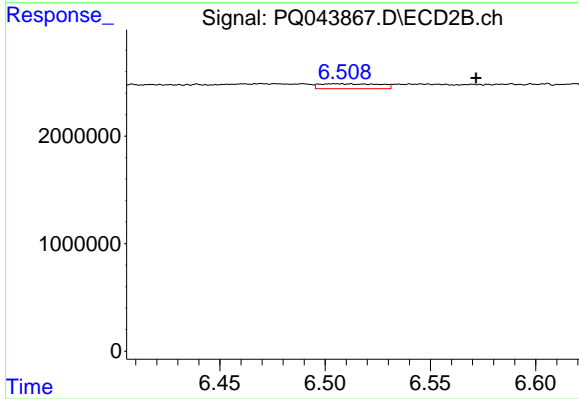
#11 AR-1232-1

R.T.: 4.910 min
 Delta R.T.: 0.044 min
 Response: 592706
 Conc: 21.52 ng/ml



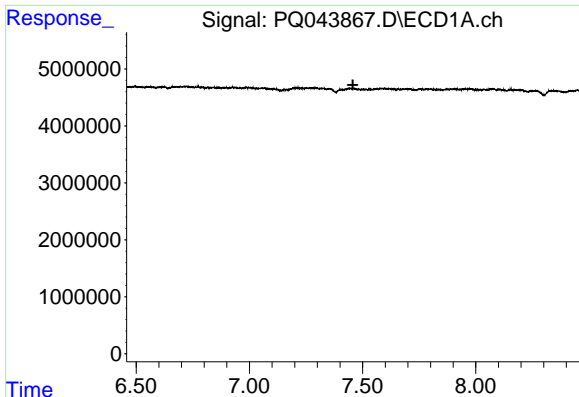
#20 AR-1242-5

R.T.: 0.000 min
 Exp R.T. : 7.525 min
 Response: 0
 Conc: N.D.



#20 AR-1242-5

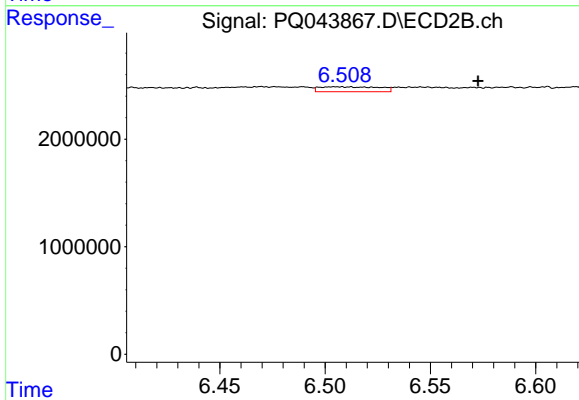
R.T.: 6.506 min
 Delta R.T.: -0.066 min
 Response: 910335
 Conc: 26.22 ng/ml



#26 AR-1254-1

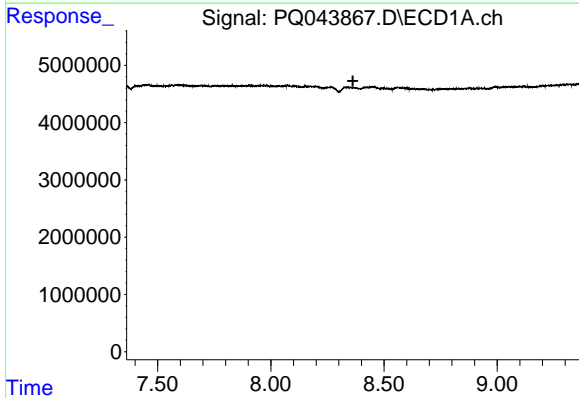
R.T.: 0.000 min
 Exp R.T. : 7.457 min
 Response: 0
 Conc: N.D.

Instrument :
 ECD_Q
 ClientSampleId :
 JLMD2



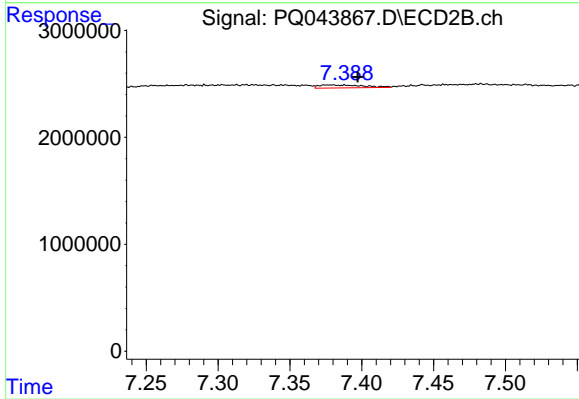
#26 AR-1254-1

R.T.: 6.506 min
 Delta R.T.: -0.067 min
 Response: 910335
 Conc: 12.04 ng/ml



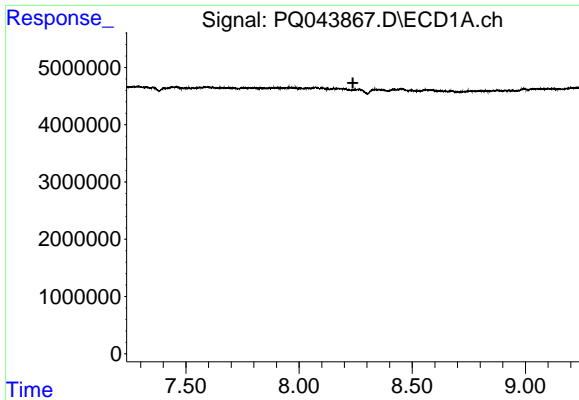
#29 AR-1254-4

R.T.: 0.000 min
 Exp R.T. : 8.363 min
 Response: 0
 Conc: N.D.



#29 AR-1254-4

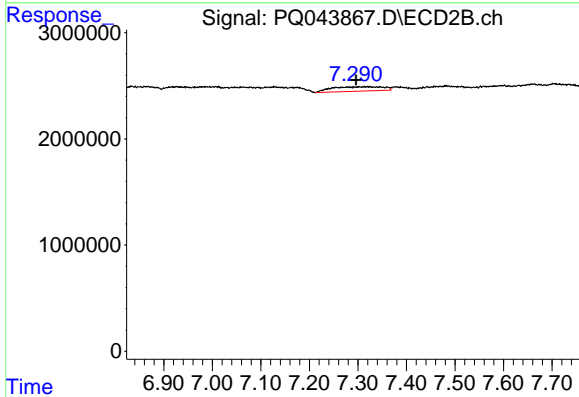
R.T.: 7.378 min
 Delta R.T.: -0.019 min
 Response: 607490
 Conc: 7.61 ng/ml



#31 AR-1260-1

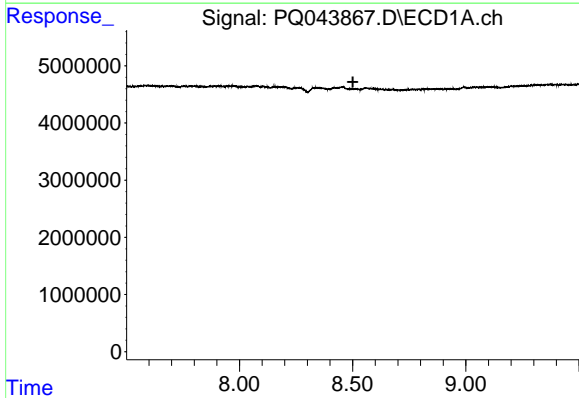
R.T.: 0.000 min
 Exp R.T.: 8.238 min
 Response: 0
 Conc: N.D.

Instrument :
 ECD_Q
ClientSampled :
 JLMD2



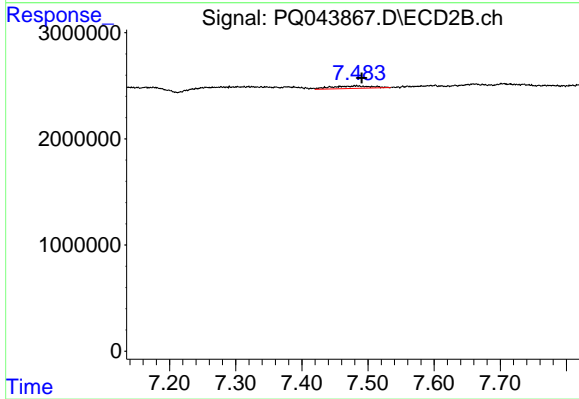
#31 AR-1260-1

R.T.: 7.303 min
 Delta R.T.: 0.007 min
 Response: 3029713
 Conc: 51.91 ng/ml



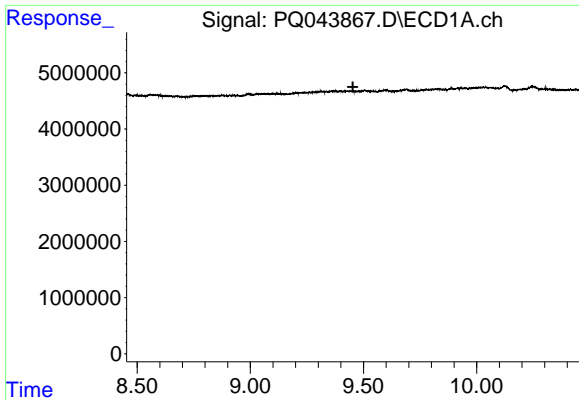
#32 AR-1260-2

R.T.: 0.000 min
 Exp R.T.: 8.501 min
 Response: 0
 Conc: N.D.



#32 AR-1260-2

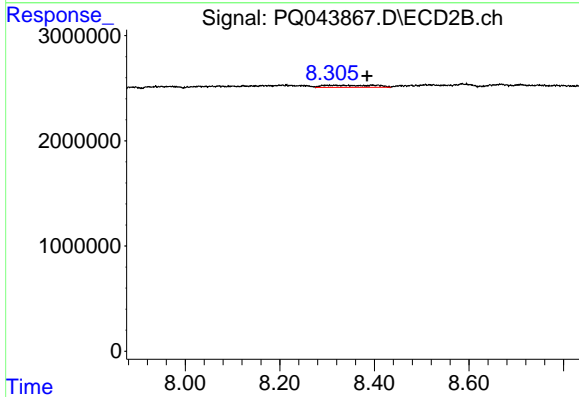
R.T.: 7.483 min
 Delta R.T.: -0.008 min
 Response: 985408
 Conc: 13.06 ng/ml



#35 AR-1260-5

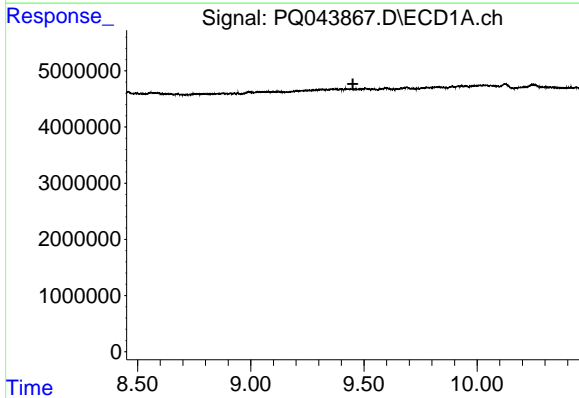
R.T.: 0.000 min
 Exp R.T. : 9.453 min
 Response: 0
 Conc: N.D.

Instrument :
 ECD_Q
 ClientSampleId :
 JLMD2



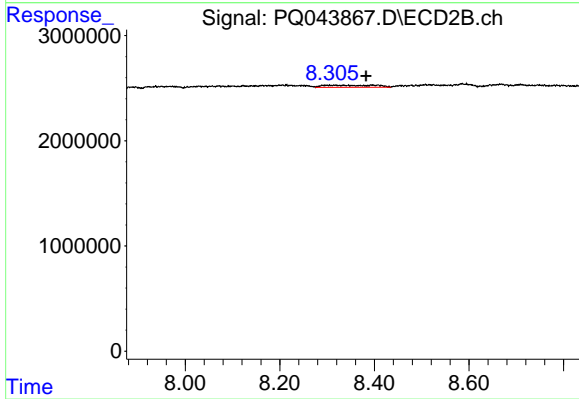
#35 AR-1260-5

R.T.: 8.407 min
 Delta R.T.: 0.022 min
 Response: 1467730
 Conc: 9.58 ng/ml



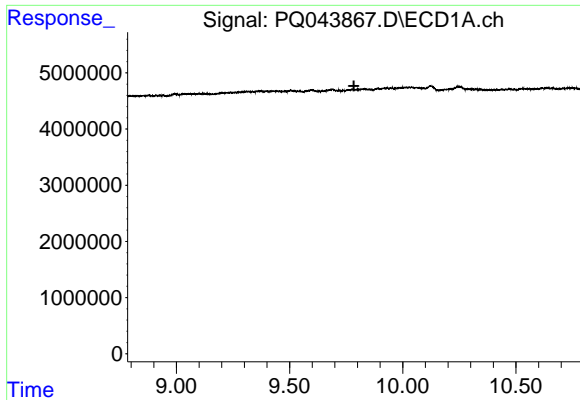
#37 AR-1262-2

R.T.: 0.000 min
 Exp R.T. : 9.451 min
 Response: 0
 Conc: N.D.



#37 AR-1262-2

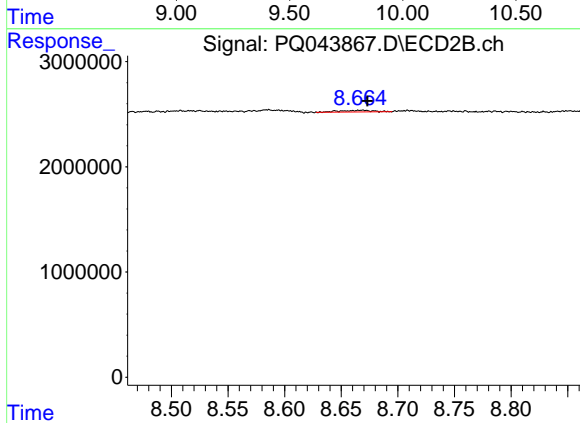
R.T.: 8.407 min
 Delta R.T.: 0.024 min
 Response: 1467730
 Conc: 7.00 ng/ml



#38 AR-1262-3

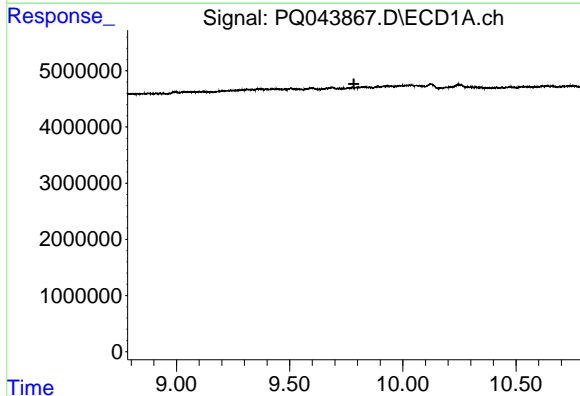
R.T.: 0.000 min
 Exp R.T.: 9.784 min
 Response: 0
 Conc: N.D.

Instrument :
 ECD_Q
 ClientSampleId :
 JLMD2



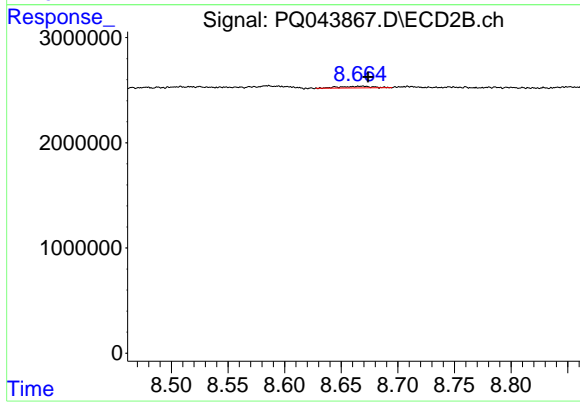
#38 AR-1262-3

R.T.: 8.667 min
 Delta R.T.: -0.006 min
 Response: 319292
 Conc: 3.59 ng/ml



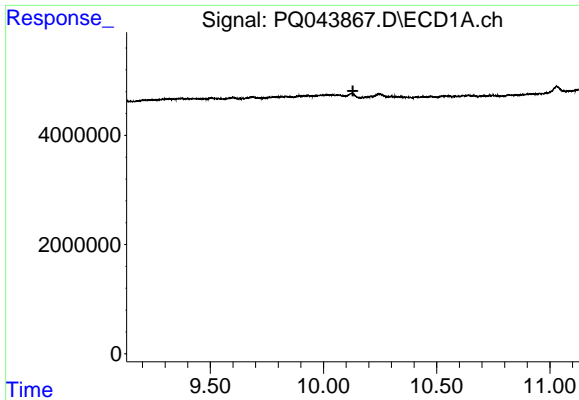
#41 AR-1268-1

R.T.: 0.000 min
 Exp R.T.: 9.784 min
 Response: 0
 Conc: N.D.



#41 AR-1268-1

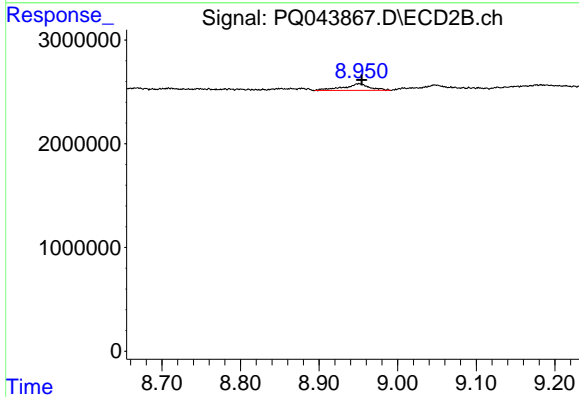
R.T.: 8.667 min
 Delta R.T.: -0.007 min
 Response: 319292
 Conc: 1.23 ng/ml



#43 AR-1268-3

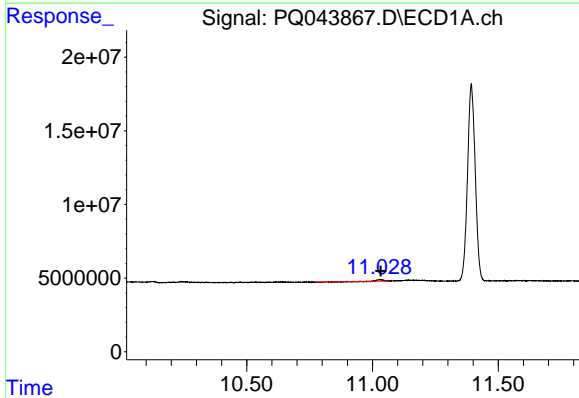
R.T.: 0.000 min
 Exp R.T.: 10.130 min
 Response: 0
 Conc: N.D.

Instrument :
 ECD_Q
 ClientSampleId :
 JLMD2



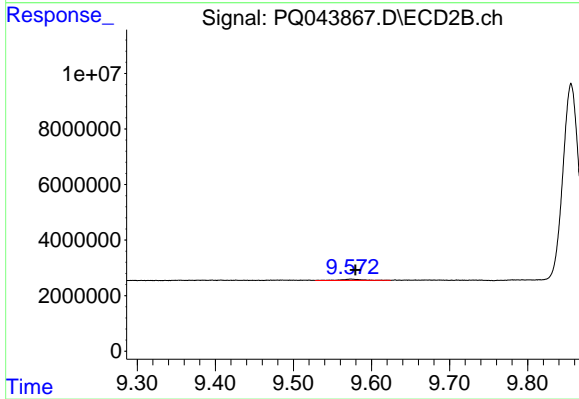
#43 AR-1268-3

R.T.: 8.951 min
 Delta R.T.: -0.004 min
 Response: 1495703
 Conc: 7.03 ng/ml



#45 AR-1268-5

R.T.: 11.031 min
 Delta R.T.: -0.003 min
 Response: 2015403
 Conc: 0.79 ng/ml



#45 AR-1268-5

R.T.: 9.574 min
 Delta R.T.: -0.005 min
 Response: 1030244
 Conc: 1.16 ng/ml