

Data Path : Z:\pestpcbsrv\HPCHEM1\ECD_Q\Data\PQ092721\
 Data File : PQ054778.D
 Signal(s) : Signal #1: ECD1A.ch Signal #2: ECD2B.ch
 Acq On : 27 Sep 2021 14:37
 Operator : AJ\MA
 Sample : M3913-01
 Misc :
 ALS Vial : 20 Sample Multiplier: 1

Instrument :
 ECD_Q
 ClientSampleId :
 TR-05-092321

Integration File signal 1: autoint1.e
 Integration File signal 2: autoint2.e
 Quant Time: Sep 28 02:01:16 2021
 Quant Method : Z:\pestpcbsrv\HPCHEM1\ECD_Q\Method\PQ091421.M
 Quant Title : GC EXTRACTABLES
 QLast Update : Wed Sep 15 05:25:53 2021
 Response via : Initial Calibration
 Integrator: ChemStation

Volume Inj. : 2 µl
 Signal #1 Phase : ZB-MR1 Signal #2 Phase: ZB-MR2
 Signal #1 Info : 30Mx0.32mmx 0.50µ Signal #2 Info : 30M x 0.32mm x 0.25µm

| Compound | RT#1 | RT#2 | Resp#1 | Resp#2 | ng/ml | ng/ml |
|-----------------------------|--------|--------|----------|----------|---------|-----------|
| System Monitoring Compounds | | | | | | |
| 1) SA Tetrachlo... | 5.199 | 4.205 | 471.4E6 | 249.1E6 | 19.740 | 18.845 |
| 2) SA Decachlor... | 11.367 | 9.535 | 292.1E6 | 200.0E6 | 17.308 | 14.758 |
| Target Compounds | | | | | | |
| 3) L1 AR-1016-1 | 6.543f | 0.000 | 43294664 | 0 | 52.487 | N.D. # |
| 4) L1 AR-1016-2 | 6.543 | 0.000 | 43294664 | 0 | 35.492 | N.D. # |
| 7) L1 AR-1016-5 | 7.033 | 5.961 | 12298316 | 6280924 | 21.647 | 18.196 |
| 8) L2 AR-1221-1 | 0.000 | 4.454 | 0 | 60337605 | N.D. | 464.183 # |
| 9) L2 AR-1221-2 | 5.556 | 4.541f | 25049207 | 14476875 | 131.042 | 151.945 |
| 10) L2 AR-1221-3 | 5.648 | 0.000 | 11803102 | 0 | 19.693 | N.D. # |
| 11) L3 AR-1232-1 | 5.648 | 0.000 | 11803102 | 0 | 25.508 | N.D. # |
| 12) L3 AR-1232-2 | 6.255f | 0.000 | 47718298 | 0 | 168.584 | N.D. # |
| 13) L3 AR-1232-3 | 6.543 | 0.000 | 43294664 | 0 | 82.339 | N.D. # |
| 14) L3 AR-1232-4 | 0.000 | 5.788 | 0 | 5394409 | N.D. | 42.704 # |
| 15) L3 AR-1232-5 | 6.830 | 5.961 | 16250885 | 6280924 | 80.372 | 43.307 # |
| 16) L4 AR-1242-1 | 6.543f | 0.000 | 43294664 | 0 | 73.499 | N.D. # |
| 17) L4 AR-1242-2 | 6.543 | 0.000 | 43294664 | 0 | 48.253 | N.D. # |
| 19) L4 AR-1242-4 | 0.000 | 5.788 | 0 | 5394409 | N.D. | 21.314 # |
| 20) L4 AR-1242-5 | 7.503 | 6.344 | 19347018 | 7273435 | 41.320 | 20.473 # |
| 21) L5 AR-1248-1 | 6.543f | 0.000 | 43294664 | 0 | 86.503 | N.D. # |
| 22) L5 AR-1248-2 | 6.830 | 0.000 | 16250885 | 0 | 25.013 | N.D. # |
| 23) L5 AR-1248-3 | 7.033 | 5.788 | 12298316 | 5394409 | 17.197 | 15.170 |
| 24) L5 AR-1248-4 | 7.479 | 5.961 | 15307288 | 6280924 | 19.349 | 14.622 |
| 25) L5 AR-1248-5 | 7.503 | 6.387 | 19347018 | 11983492 | 24.110 | 27.971 |
| 26) L6 AR-1254-1 | 7.434 | 6.344 | 27911060 | 7273435 | 32.042 | 9.548 # |
| 27) L6 AR-1254-2 | 7.662 | 6.485 | 38387991 | 14541705 | 28.699 | 20.780 # |
| 28) L6 AR-1254-3 | 8.074f | 6.913 | 17669862 | 12582802 | 12.687 | 11.414 |
| 29) L6 AR-1254-4 | 8.339 | 7.149 | 47338244 | 5457204 | 44.436 | 7.217 # |
| 30) L6 AR-1254-5 | 8.766 | 7.581 | 25775679 | 3436958 | 22.428 | 3.106 # |
| 31) L7 AR-1260-1 | 8.207 | 7.051 | 35061879 | 12342373 | 35.331 | 16.435 # |
| 32) L7 AR-1260-2 | 8.472 | 7.248 | 32166520 | 14633638 | 27.336 | 14.140 # |
| 33) L7 AR-1260-3 | 8.836 | 7.402 | 21847648 | 3856588 | 28.526 | 4.362 # |
| 34) L7 AR-1260-4 | 9.079 | 7.886 | 15242723 | 2944241 | 16.318 | 4.255 # |
| 35) L7 AR-1260-5 | 9.423 | 8.132 | 12760099 | 6268311 | 6.922 | 3.280 # |
| 36) L8 AR-1262-1 | 8.836 | 7.581 | 21847648 | 3436958 | 18.594 | 6.652 # |
| 37) L8 AR-1262-2 | 9.423 | 8.132 | 12760099 | 6268311 | 5.883 | 2.830 # |
| 38) L8 AR-1262-3 | 9.782f | 8.420 | 13066743 | 4449500 | 14.670 | 5.015 # |
| 39) L8 AR-1262-4 | 9.835f | 8.482 | 2281510 | 5491148 | 4.044 | 3.611 |
| 41) L9 AR-1268-1 | 9.782f | 8.420 | 13066743 | 4449500 | 5.210 | 1.639 # |
| 42) L9 AR-1268-2 | 9.835f | 8.482 | 2281510 | 5491148 | 0.998 | 2.383 # |
| 43) L9 AR-1268-3 | 0.000 | 8.696 | 0 | 2946394 | N.D. | 1.462 # |

Data Path : Z:\pestpcbsrv\HPCHEM1\ECD_Q\Data\PQ092721\
Data File : PQ054778.D
Signal(s) : Signal #1: ECD1A.ch Signal #2: ECD2B.ch
Acq On : 27 Sep 2021 14:37
Operator : AJ\MA
Sample : M3913-01
Misc :
ALS Vial : 20 Sample Multiplier: 1

Instrument :
ECD_Q
ClientSampleId :
TR-05-092321

Integration File signal 1: autoint1.e
Integration File signal 2: autoint2.e
Quant Time: Sep 28 02:01:16 2021
Quant Method : Z:\pestpcbsrv\HPCHEM1\ECD_Q\Method\PQ091421.M
Quant Title : GC EXTRACTABLES
QLast Update : Wed Sep 15 05:25:53 2021
Response via : Initial Calibration
Integrator: ChemStation

Volume Inj. : 2 µl
Signal #1 Phase : ZB-MR1 Signal #2 Phase: ZB-MR2
Signal #1 Info : 30Mx0.32mmx 0.50µ Signal #2 Info : 30M x 0.32mm x 0.25µm

| Compound | RT#1 | RT#2 | Resp#1 | Resp#2 | ng/ml | ng/ml |
|----------|------|------|--------|--------|-------|-------|
|----------|------|------|--------|--------|-------|-------|

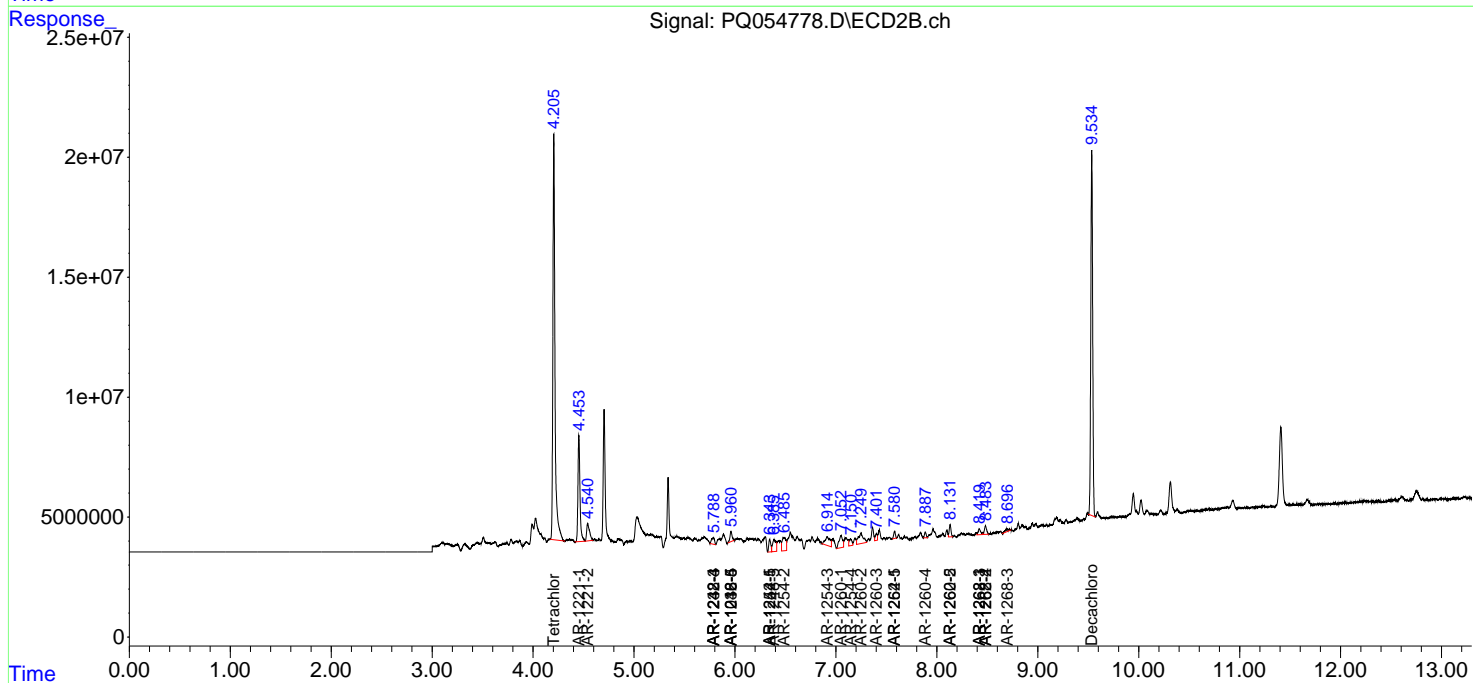
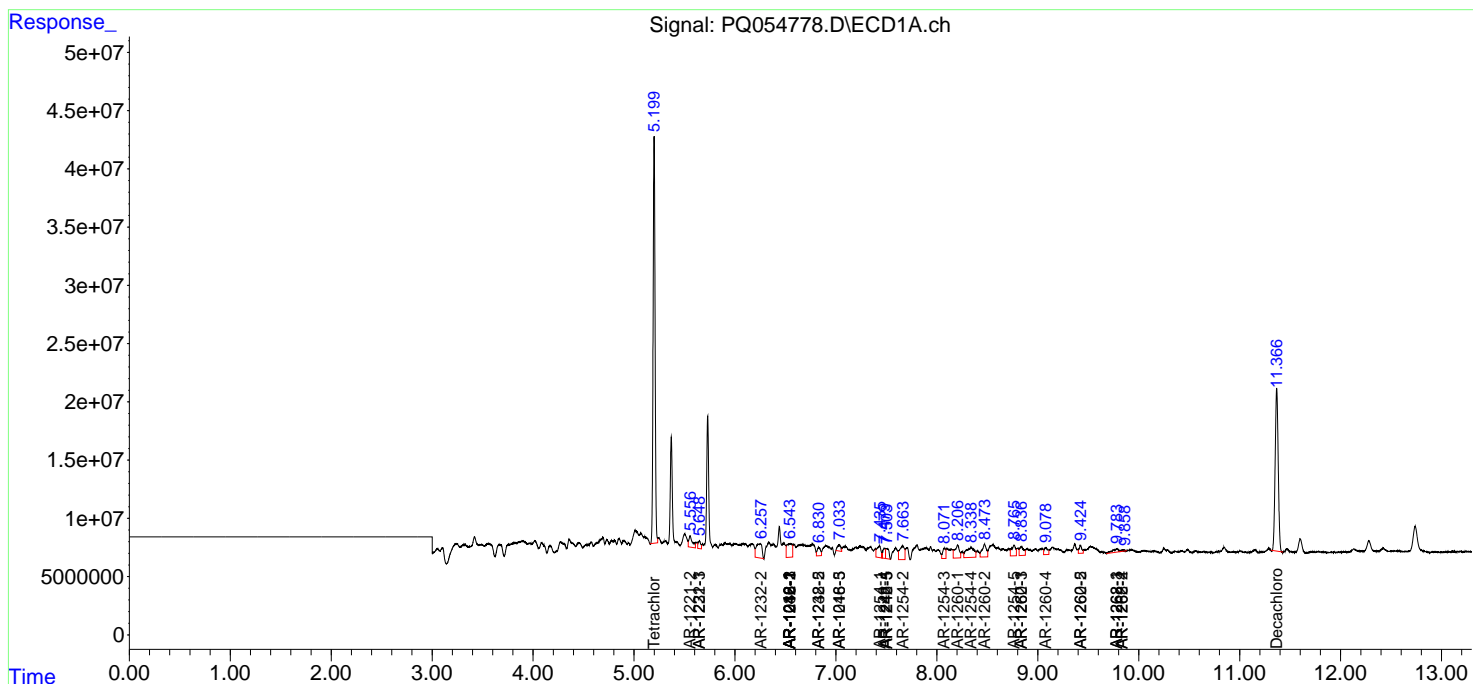
(f)=RT Delta > 1/2 Window (#)=Amounts differ by > 25% (m)=manual int.

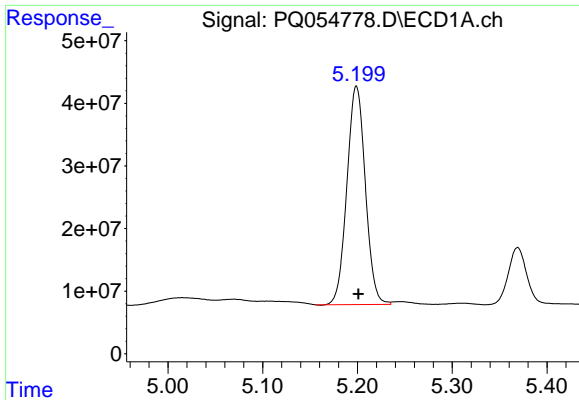
Data Path : Z:\pestpcbsrv\HPCHEM1\ECD_Q\Data\PQ092721\
 Data File : PQ054778.D
 Signal(s) : Signal #1: ECD1A.ch Signal #2: ECD2B.ch
 Acq On : 27 Sep 2021 14:37
 Operator : AJ\MA
 Sample : M3913-01
 Misc :
 ALS Vial : 20 Sample Multiplier: 1

Instrument :
 ECD_Q
 Client Sampled :
 TR-05-092321

Integration File signal 1: autoint1.e
 Integration File signal 2: autoint2.e
 Quant Time: Sep 28 02:01:16 2021
 Quant Method : Z:\pestpcbsrv\HPCHEM1\ECD_Q\Method\PQ091421.M
 Quant Title : GC EXTRACTABLES
 QLast Update : Wed Sep 15 05:25:53 2021
 Response via : Initial Calibration
 Integrator: ChemStation

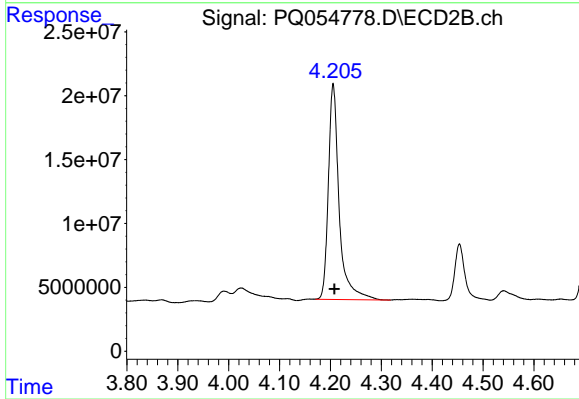
Volume Inj. : 2 µl
 Signal #1 Phase : ZB-MR1 Signal #2 Phase: ZB-MR2
 Signal #1 Info : 30Mx0.32mmx 0.50µ Signal #2 Info : 30M x 0.32mm x 0.25µm



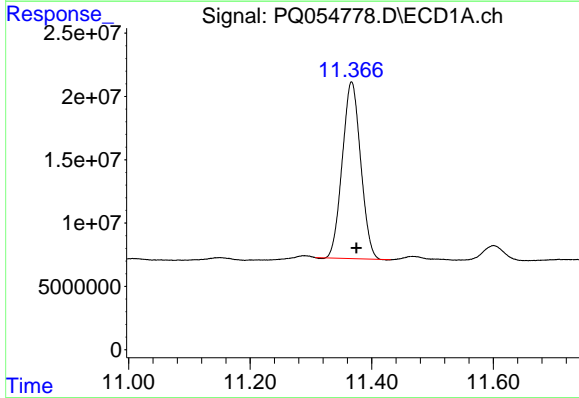


#1 Tetrachloro-m-xylene
 R.T.: 5.199 min
 Delta R.T.: -0.002 min
 Response: 471420787
 Conc: 19.74 ng/ml

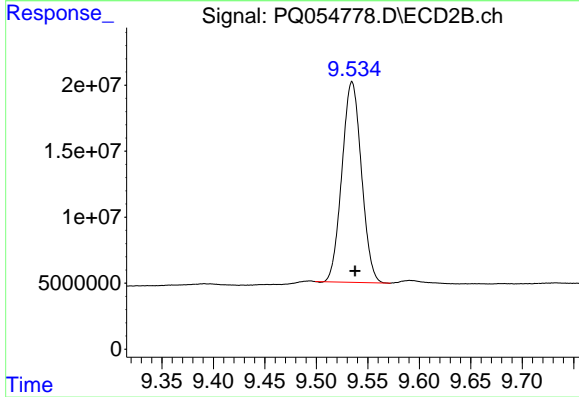
Instrument :
 ECD_Q
 ClientSampleId :
 TR-05-092321



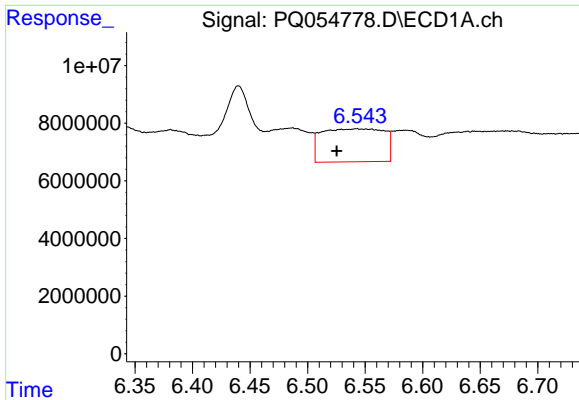
#1 Tetrachloro-m-xylene
 R.T.: 4.205 min
 Delta R.T.: -0.003 min
 Response: 249132345
 Conc: 18.85 ng/ml



#2 Decachlorobiphenyl
 R.T.: 11.367 min
 Delta R.T.: -0.008 min
 Response: 292119408
 Conc: 17.31 ng/ml



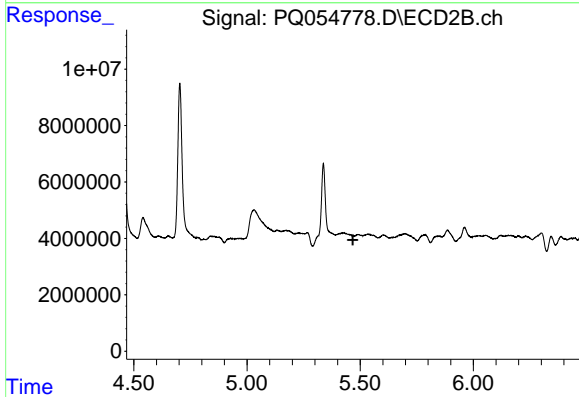
#2 Decachlorobiphenyl
 R.T.: 9.535 min
 Delta R.T.: -0.003 min
 Response: 200002675
 Conc: 14.76 ng/ml



#3 AR-1016-1

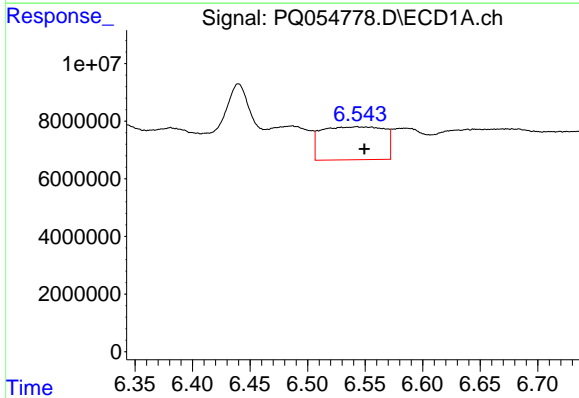
R.T.: 6.543 min
Delta R.T.: 0.017 min
Response: 43294664
Conc: 52.49 ng/ml

Instrument :
ECD_Q
ClientSampled :
TR-05-092321



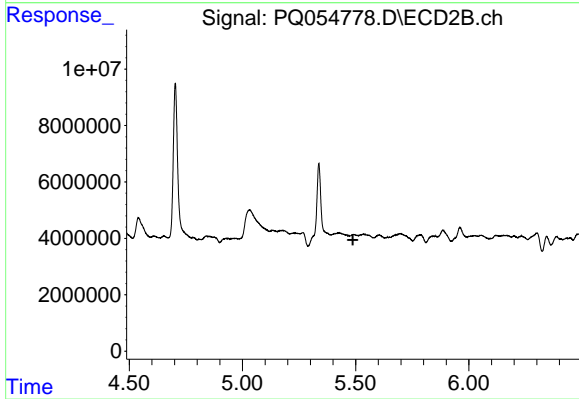
#3 AR-1016-1

R.T.: 0.000 min
Exp R.T. : 5.468 min
Response: 0
Conc: N.D.



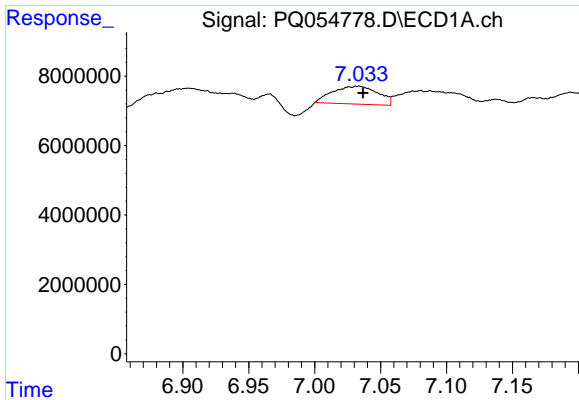
#4 AR-1016-2

R.T.: 6.543 min
Delta R.T.: -0.007 min
Response: 43294664
Conc: 35.49 ng/ml



#4 AR-1016-2

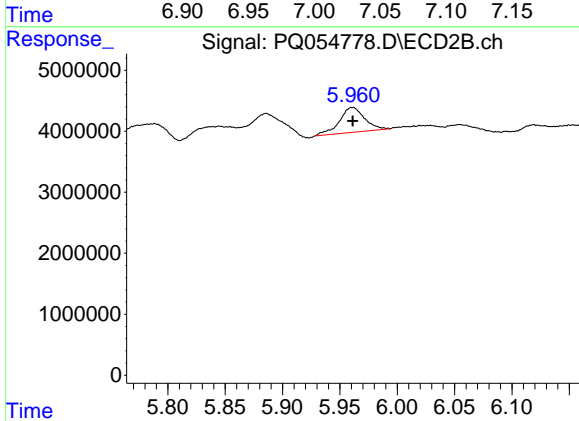
R.T.: 0.000 min
Exp R.T. : 5.488 min
Response: 0
Conc: N.D.



#7 AR-1016-5

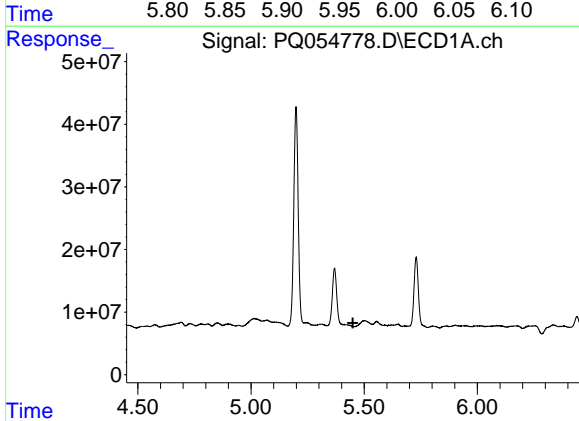
R.T.: 7.033 min
 Delta R.T.: -0.003 min
 Response: 12298316
 Conc: 21.65 ng/ml

Instrument :
 ECD_Q
 ClientSampleId :
 TR-05-092321



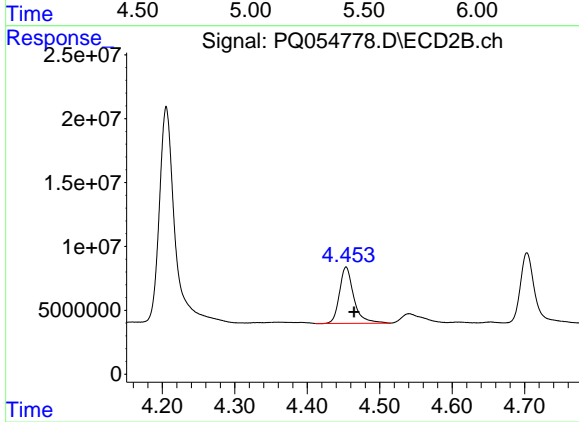
#7 AR-1016-5

R.T.: 5.961 min
 Delta R.T.: 0.000 min
 Response: 6280924
 Conc: 18.20 ng/ml



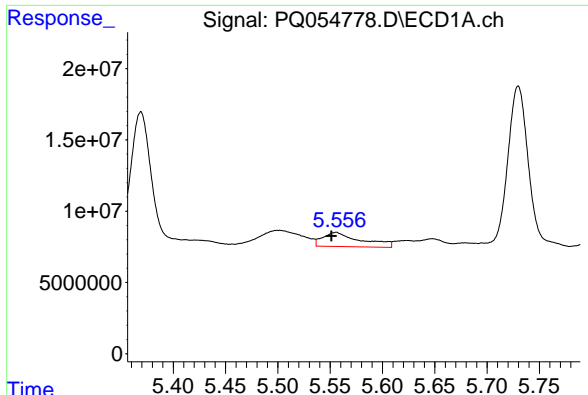
#8 AR-1221-1

R.T.: 0.000 min
 Exp R.T. : 5.450 min
 Response: 0
 Conc: N.D.



#8 AR-1221-1

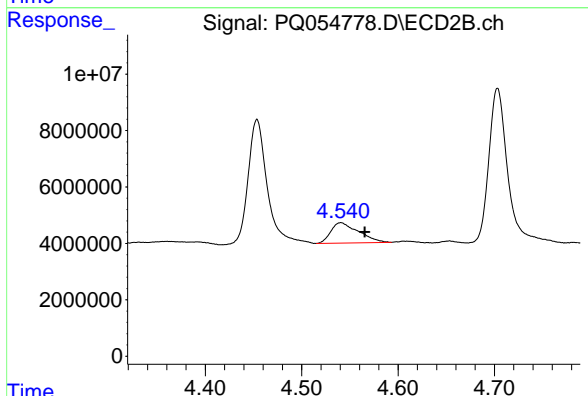
R.T.: 4.454 min
 Delta R.T.: -0.011 min
 Response: 60337605
 Conc: 464.18 ng/ml



#9 AR-1221-2

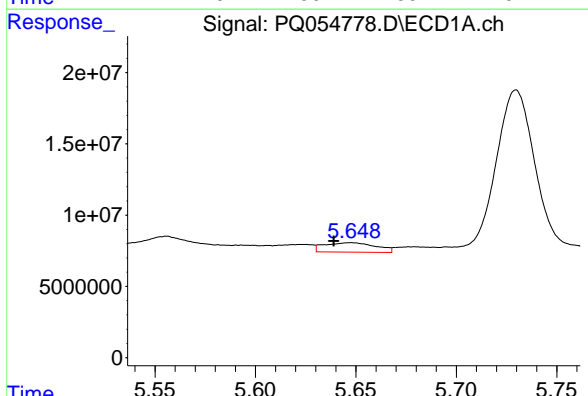
R.T.: 5.556 min
 Delta R.T.: 0.004 min
 Response: 25049207
 Conc: 131.04 ng/ml

Instrument :
 ECD_Q
 ClientSampleId :
 TR-05-092321



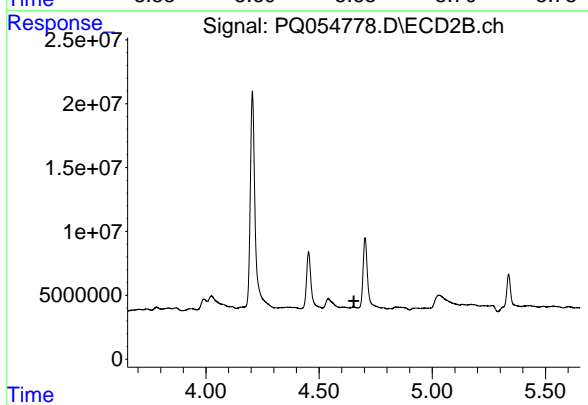
#9 AR-1221-2

R.T.: 4.541 min
 Delta R.T.: -0.024 min
 Response: 14476875
 Conc: 151.94 ng/ml



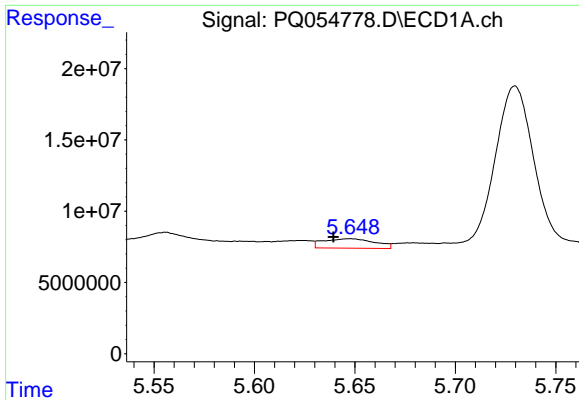
#10 AR-1221-3

R.T.: 5.648 min
 Delta R.T.: 0.009 min
 Response: 11803102
 Conc: 19.69 ng/ml



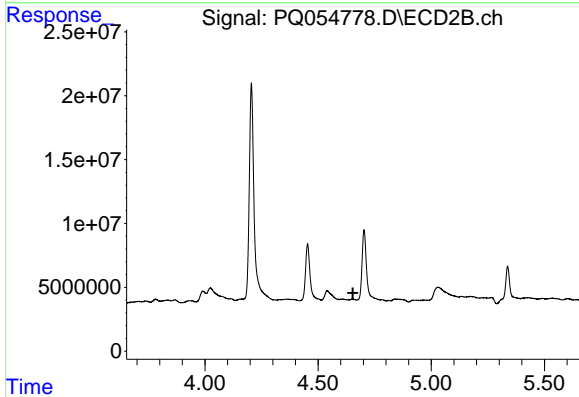
#10 AR-1221-3

R.T.: 0.000 min
 Exp R.T. : 4.654 min
 Response: 0
 Conc: N.D.

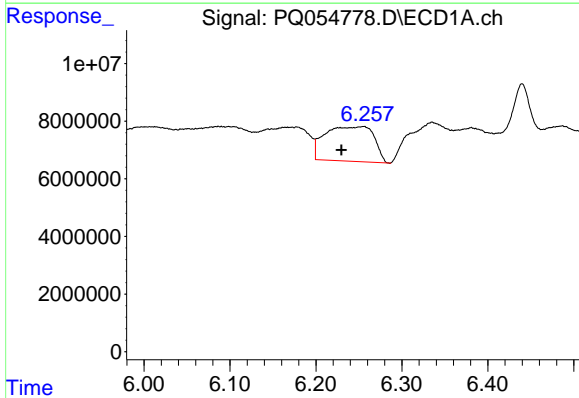


#11 AR-1232-1
 R.T.: 5.648 min
 Delta R.T.: 0.008 min
 Response: 11803102
 Conc: 25.51 ng/ml

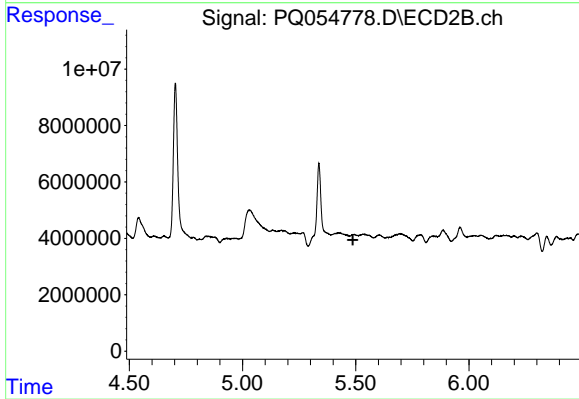
Instrument :
 ECD_Q
ClientSampled :
 TR-05-092321



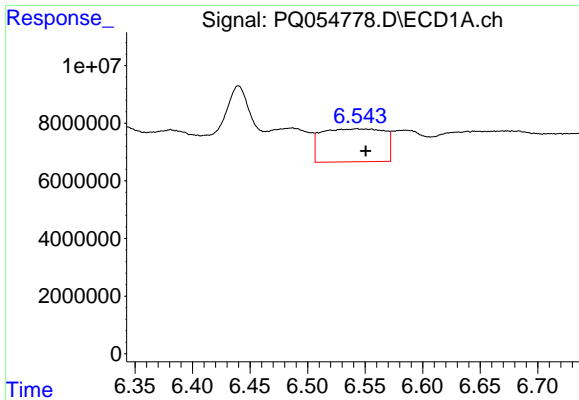
#11 AR-1232-1
 R.T.: 0.000 min
 Exp R.T. : 4.654 min
 Response: 0
 Conc: N.D.



#12 AR-1232-2
 R.T.: 6.255 min
 Delta R.T.: 0.026 min
 Response: 47718298
 Conc: 168.58 ng/ml



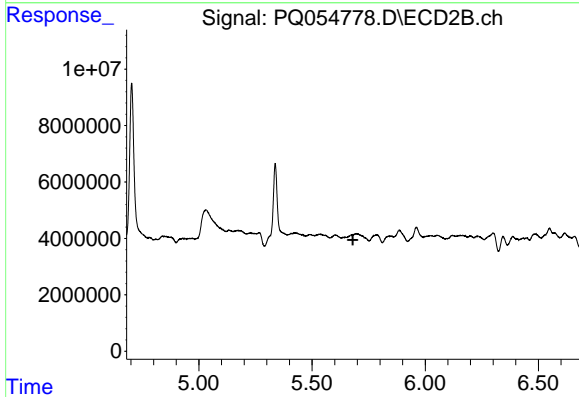
#12 AR-1232-2
 R.T.: 0.000 min
 Exp R.T. : 5.487 min
 Response: 0
 Conc: N.D.



#13 AR-1232-3

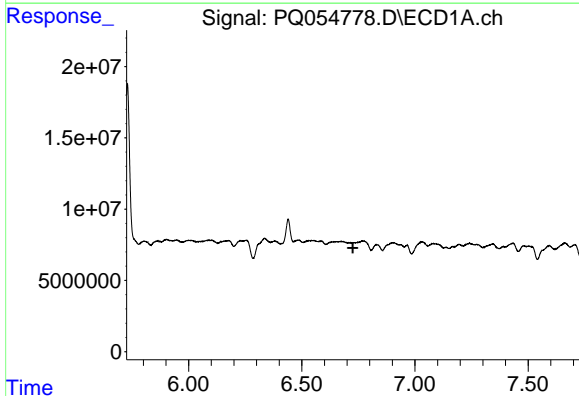
R.T.: 6.543 min
Delta R.T.: -0.008 min
Response: 43294664
Conc: 82.34 ng/ml

Instrument :
ECD_Q
ClientSampleId :
TR-05-092321



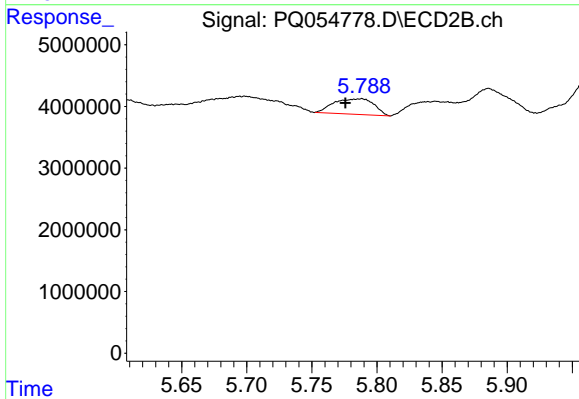
#13 AR-1232-3

R.T.: 0.000 min
Exp R.T. : 5.681 min
Response: 0
Conc: N.D.



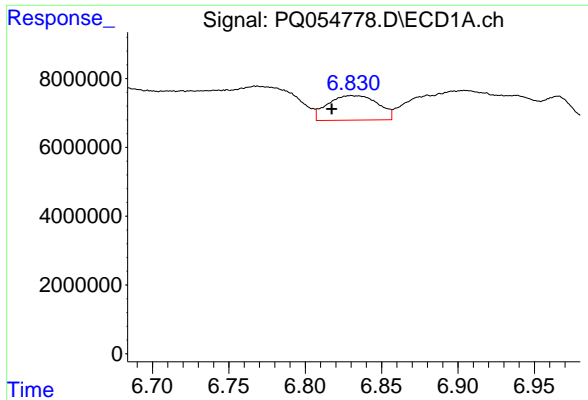
#14 AR-1232-4

R.T.: 0.000 min
Exp R.T. : 6.726 min
Response: 0
Conc: N.D.



#14 AR-1232-4

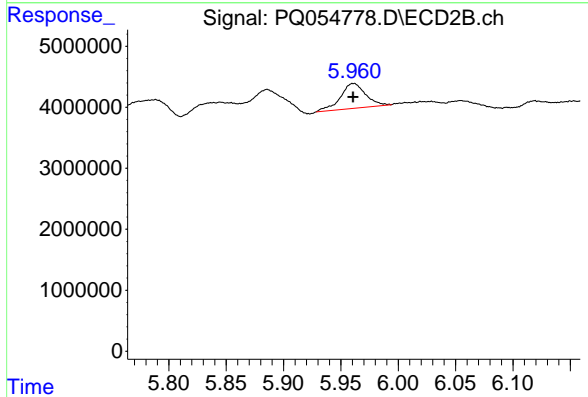
R.T.: 5.788 min
Delta R.T.: 0.012 min
Response: 5394409
Conc: 42.70 ng/ml



#15 AR-1232-5

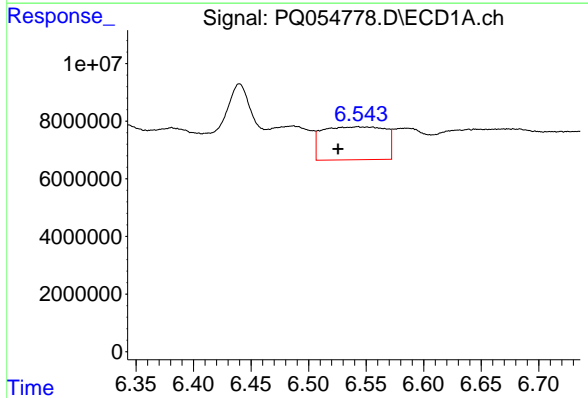
R.T.: 6.830 min
 Delta R.T.: 0.013 min
 Response: 16250885
 Conc: 80.37 ng/ml

Instrument :
 ECD_Q
 ClientSampleId :
 TR-05-092321



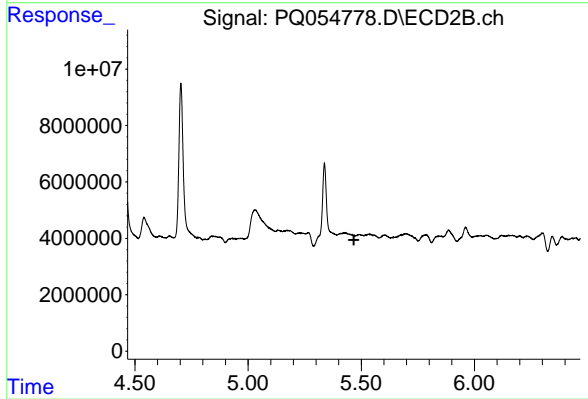
#15 AR-1232-5

R.T.: 5.961 min
 Delta R.T.: 0.000 min
 Response: 6280924
 Conc: 43.31 ng/ml



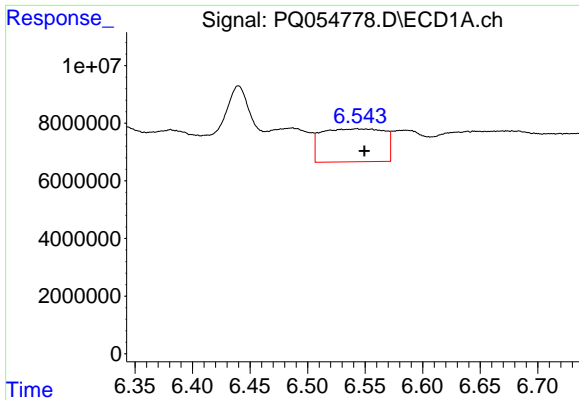
#16 AR-1242-1

R.T.: 6.543 min
 Delta R.T.: 0.017 min
 Response: 43294664
 Conc: 73.50 ng/ml



#16 AR-1242-1

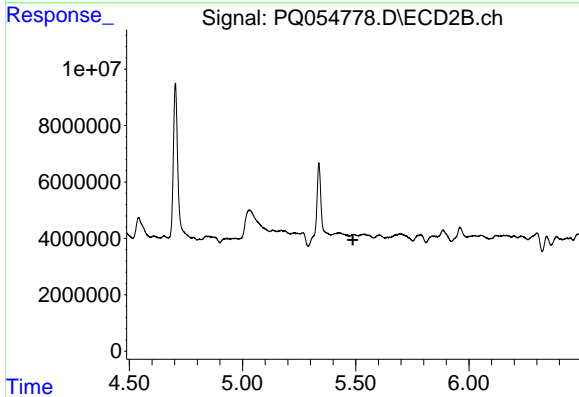
R.T.: 0.000 min
 Exp R.T. : 5.467 min
 Response: 0
 Conc: N.D.



#17 AR-1242-2

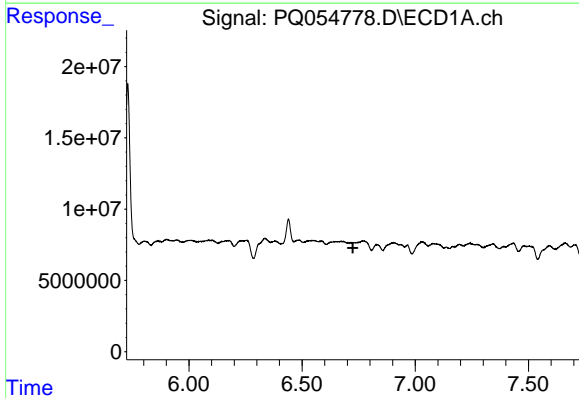
R.T.: 6.543 min
Delta R.T.: -0.007 min
Response: 43294664
Conc: 48.25 ng/ml

Instrument :
ECD_Q
ClientSampleId :
TR-05-092321



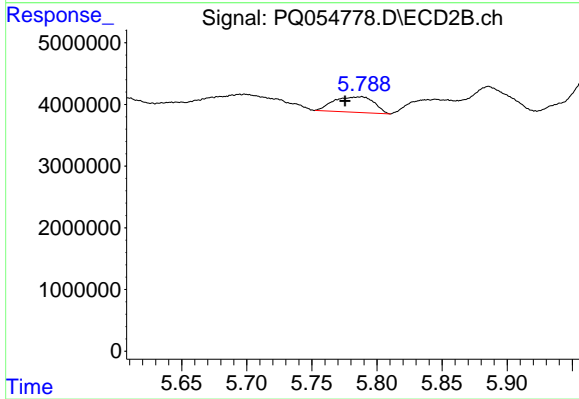
#17 AR-1242-2

R.T.: 0.000 min
Exp R.T. : 5.488 min
Response: 0
Conc: N.D.



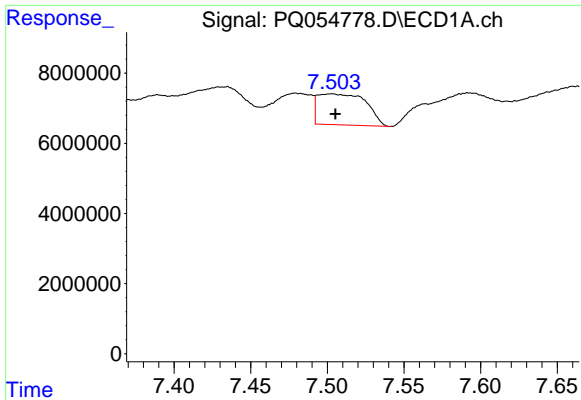
#19 AR-1242-4

R.T.: 0.000 min
Exp R.T. : 6.724 min
Response: 0
Conc: N.D.



#19 AR-1242-4

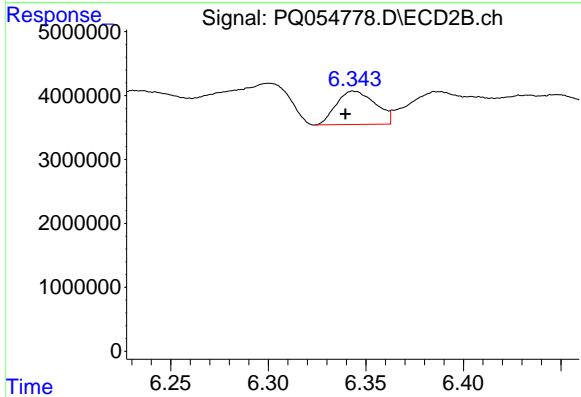
R.T.: 5.788 min
Delta R.T.: 0.013 min
Response: 5394409
Conc: 21.31 ng/ml



#20 AR-1242-5

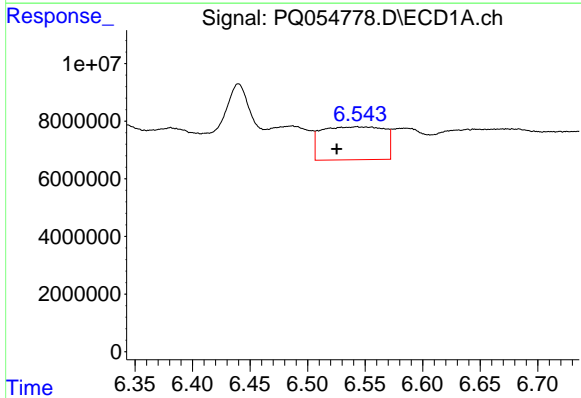
R.T.: 7.503 min
 Delta R.T.: -0.002 min
 Response: 19347018
 Conc: 41.32 ng/ml

Instrument :
 ECD_Q
 ClientSampleId :
 TR-05-092321



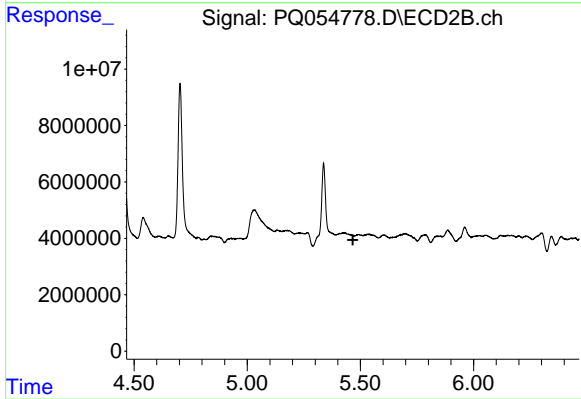
#20 AR-1242-5

R.T.: 6.344 min
 Delta R.T.: 0.004 min
 Response: 7273435
 Conc: 20.47 ng/ml



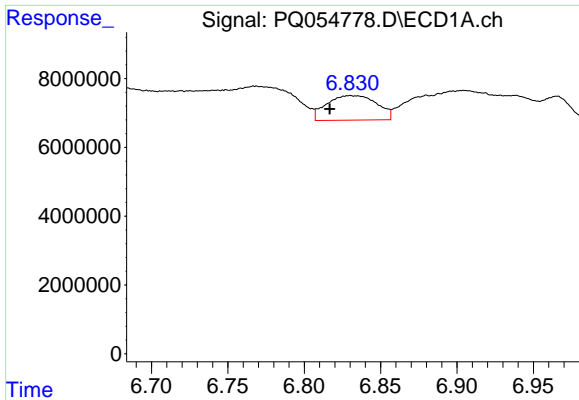
#21 AR-1248-1

R.T.: 6.543 min
 Delta R.T.: 0.017 min
 Response: 43294664
 Conc: 86.50 ng/ml



#21 AR-1248-1

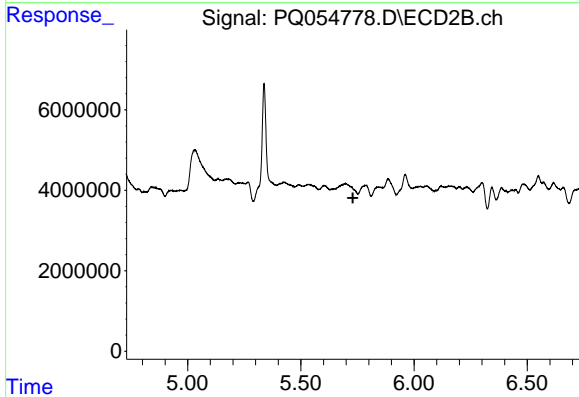
R.T.: 0.000 min
 Exp R.T. : 5.467 min
 Response: 0
 Conc: N.D.



#22 AR-1248-2

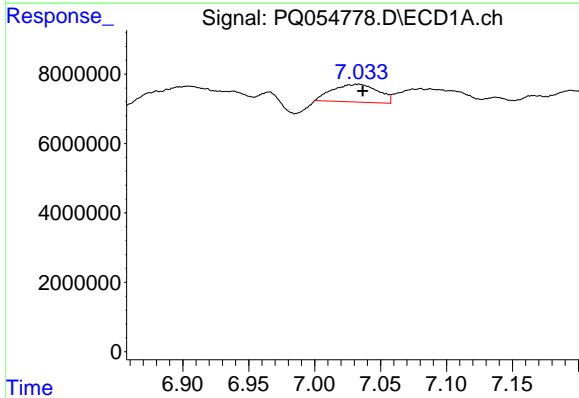
R.T.: 6.830 min
 Delta R.T.: 0.014 min
 Response: 16250885
 Conc: 25.01 ng/ml

Instrument :
 ECD_Q
 ClientSampleId :
 TR-05-092321



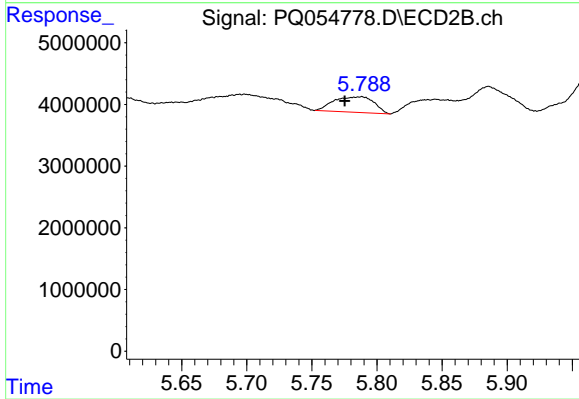
#22 AR-1248-2

R.T.: 0.000 min
 Exp R.T. : 5.730 min
 Response: 0
 Conc: N.D.



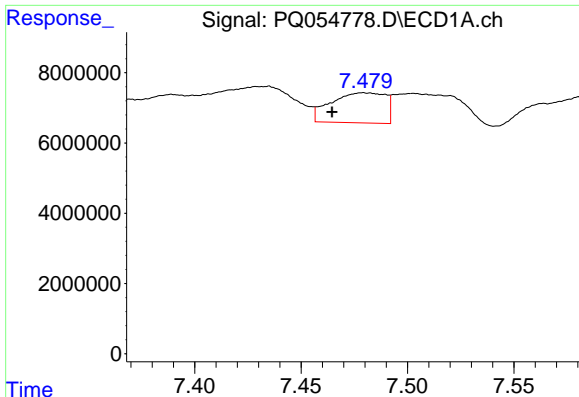
#23 AR-1248-3

R.T.: 7.033 min
 Delta R.T.: -0.003 min
 Response: 12298316
 Conc: 17.20 ng/ml



#23 AR-1248-3

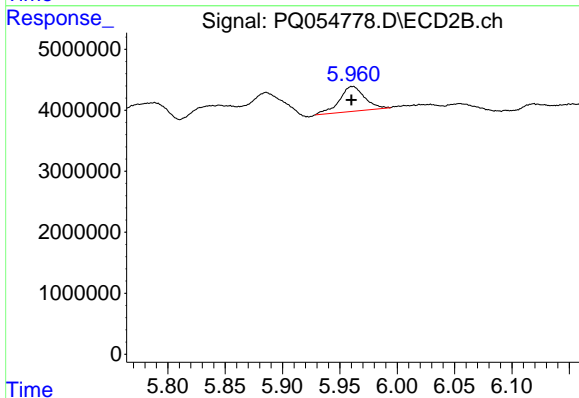
R.T.: 5.788 min
 Delta R.T.: 0.013 min
 Response: 5394409
 Conc: 15.17 ng/ml



#24 AR-1248-4

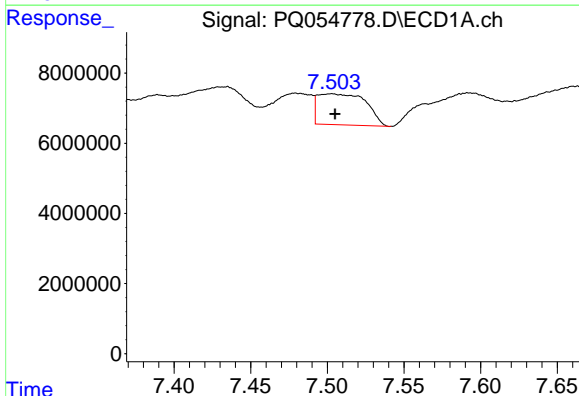
R.T.: 7.479 min
 Delta R.T.: 0.015 min
 Response: 15307288
 Conc: 19.35 ng/ml

Instrument :
 ECD_Q
 ClientSampleId :
 TR-05-092321



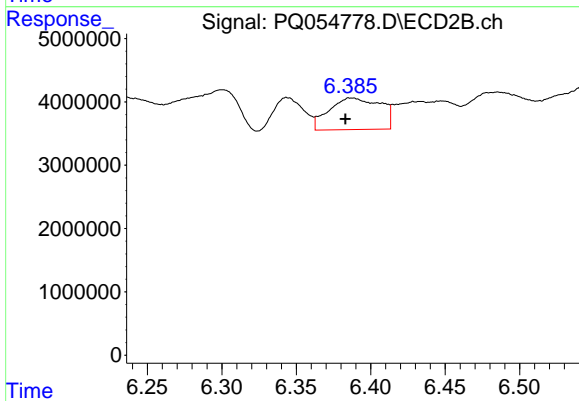
#24 AR-1248-4

R.T.: 5.961 min
 Delta R.T.: 0.000 min
 Response: 6280924
 Conc: 14.62 ng/ml



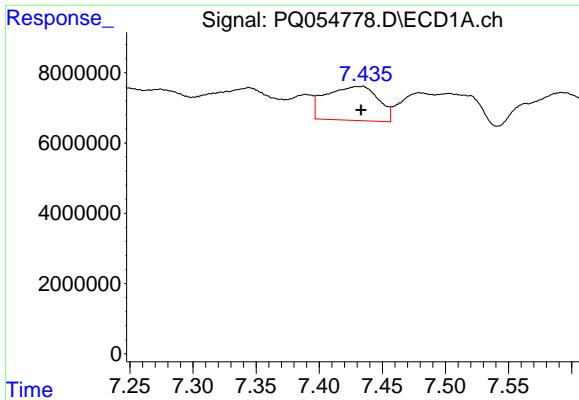
#25 AR-1248-5

R.T.: 7.503 min
 Delta R.T.: -0.002 min
 Response: 19347018
 Conc: 24.11 ng/ml



#25 AR-1248-5

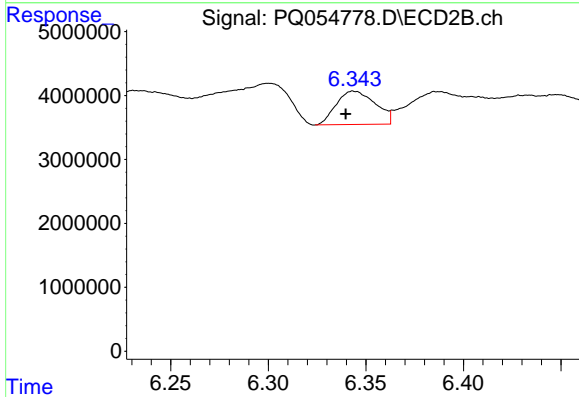
R.T.: 6.387 min
 Delta R.T.: 0.004 min
 Response: 11983492
 Conc: 27.97 ng/ml



#26 AR-1254-1

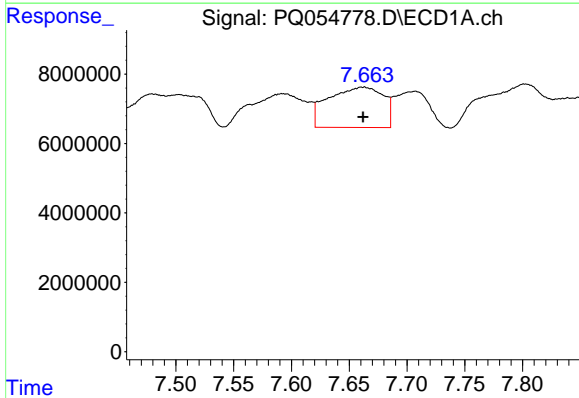
R.T.: 7.434 min
 Delta R.T.: 0.000 min
 Response: 27911060
 Conc: 32.04 ng/ml

Instrument :
 ECD_Q
 ClientSampleId :
 TR-05-092321



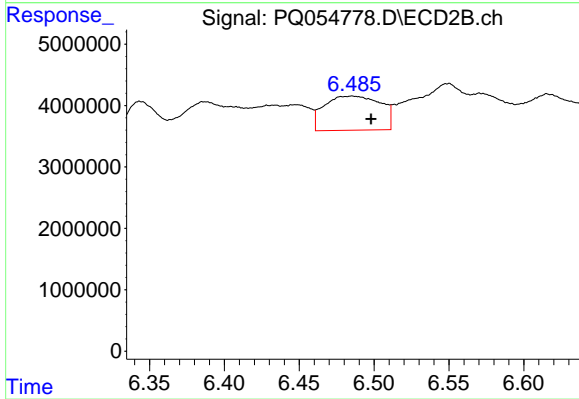
#26 AR-1254-1

R.T.: 6.344 min
 Delta R.T.: 0.004 min
 Response: 7273435
 Conc: 9.55 ng/ml



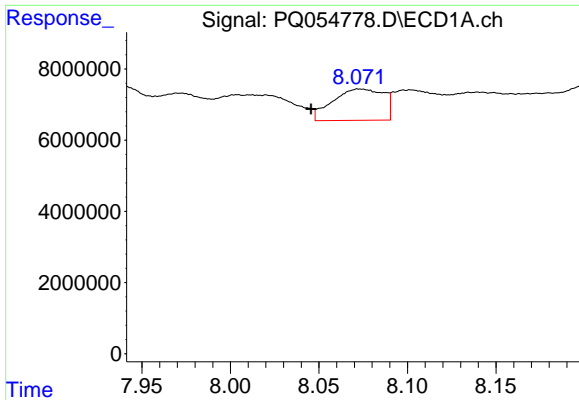
#27 AR-1254-2

R.T.: 7.662 min
 Delta R.T.: 0.000 min
 Response: 38387991
 Conc: 28.70 ng/ml



#27 AR-1254-2

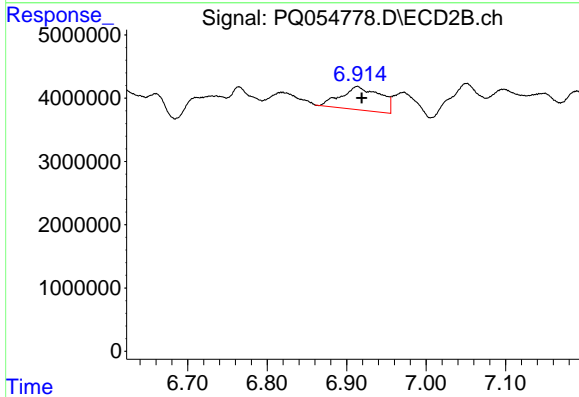
R.T.: 6.485 min
 Delta R.T.: -0.013 min
 Response: 14541705
 Conc: 20.78 ng/ml



#28 AR-1254-3

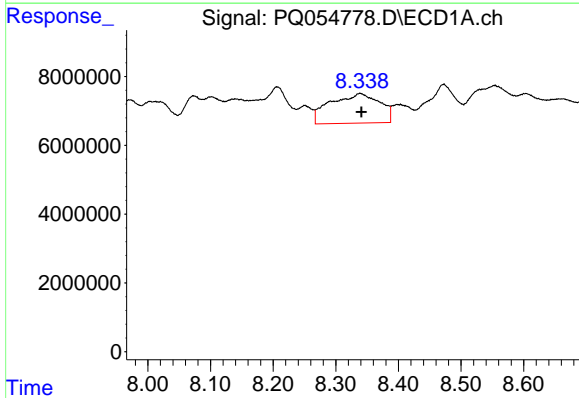
R.T.: 8.074 min
 Delta R.T.: 0.028 min
 Response: 17669862
 Conc: 12.69 ng/ml

Instrument :
 ECD_Q
 ClientSampleId :
 TR-05-092321



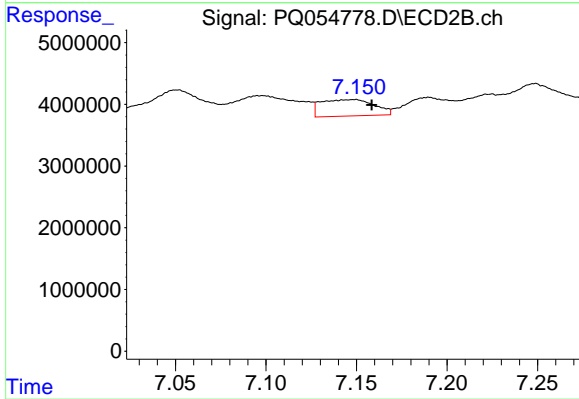
#28 AR-1254-3

R.T.: 6.913 min
 Delta R.T.: -0.006 min
 Response: 12582802
 Conc: 11.41 ng/ml



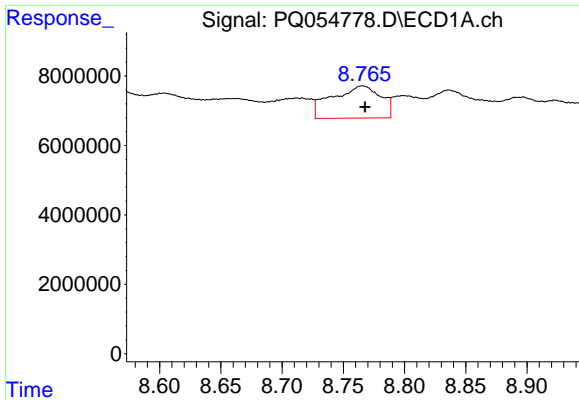
#29 AR-1254-4

R.T.: 8.339 min
 Delta R.T.: -0.002 min
 Response: 47338244
 Conc: 44.44 ng/ml



#29 AR-1254-4

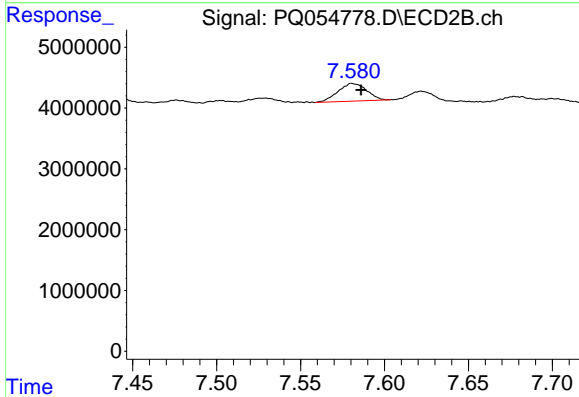
R.T.: 7.149 min
 Delta R.T.: -0.010 min
 Response: 5457204
 Conc: 7.22 ng/ml



#30 AR-1254-5

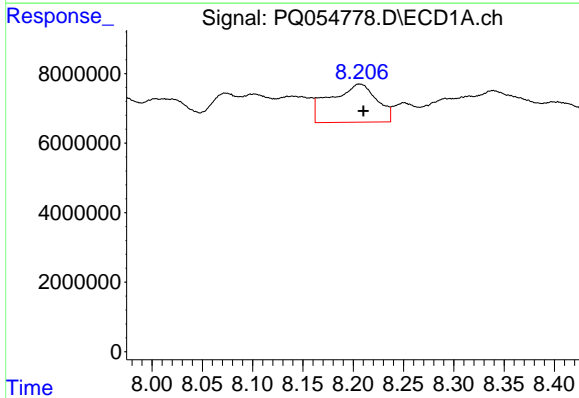
R.T.: 8.766 min
 Delta R.T.: -0.002 min
 Response: 25775679
 Conc: 22.43 ng/ml

Instrument :
 ECD_Q
ClientSampleId :
 TR-05-092321



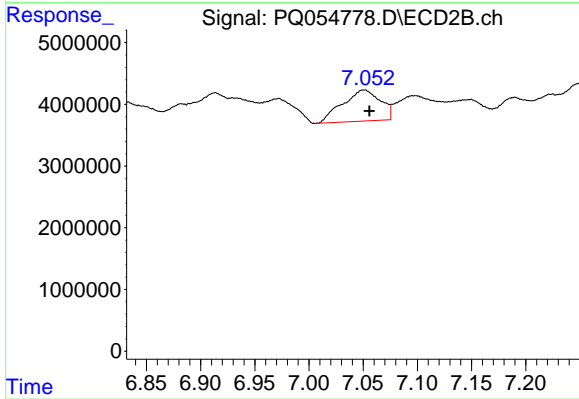
#30 AR-1254-5

R.T.: 7.581 min
 Delta R.T.: -0.005 min
 Response: 3436958
 Conc: 3.11 ng/ml



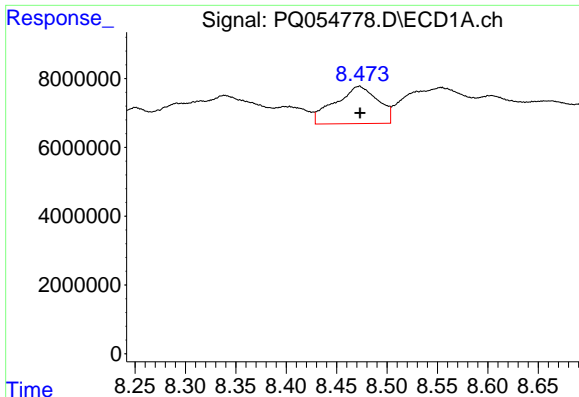
#31 AR-1260-1

R.T.: 8.207 min
 Delta R.T.: -0.004 min
 Response: 35061879
 Conc: 35.33 ng/ml



#31 AR-1260-1

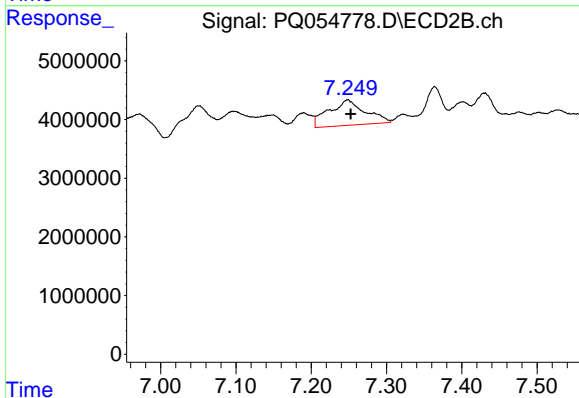
R.T.: 7.051 min
 Delta R.T.: -0.005 min
 Response: 12342373
 Conc: 16.44 ng/ml



#32 AR-1260-2

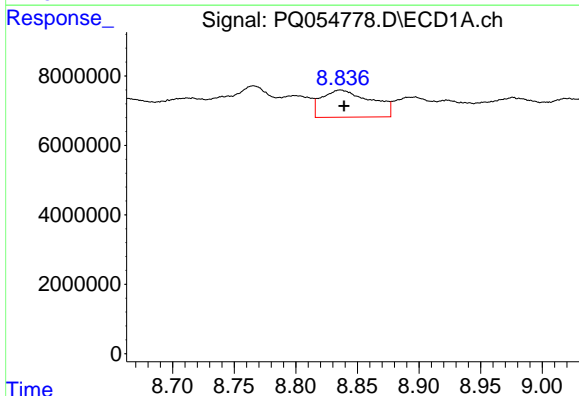
R.T.: 8.472 min
 Delta R.T.: -0.001 min
 Response: 32166520
 Conc: 27.34 ng/ml

Instrument :
 ECD_Q
 ClientSampleId :
 TR-05-092321



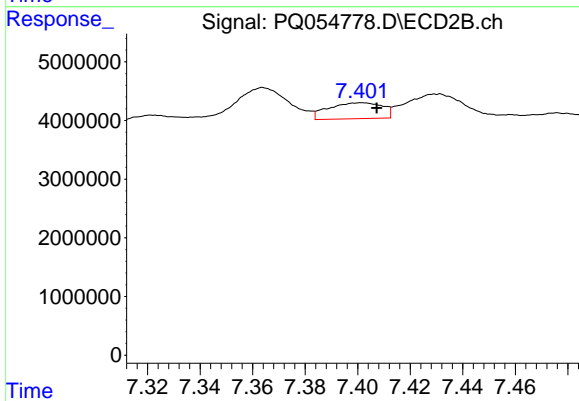
#32 AR-1260-2

R.T.: 7.248 min
 Delta R.T.: -0.004 min
 Response: 14633638
 Conc: 14.14 ng/ml



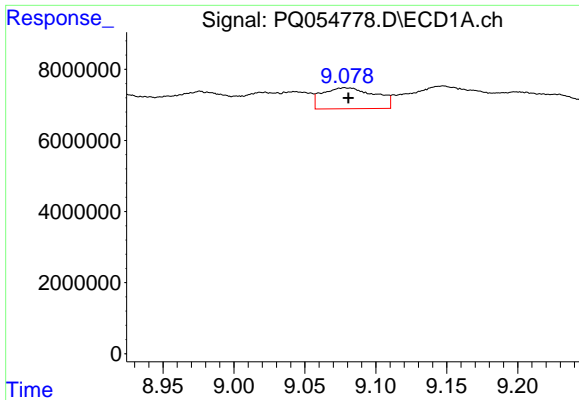
#33 AR-1260-3

R.T.: 8.836 min
 Delta R.T.: -0.003 min
 Response: 21847648
 Conc: 28.53 ng/ml



#33 AR-1260-3

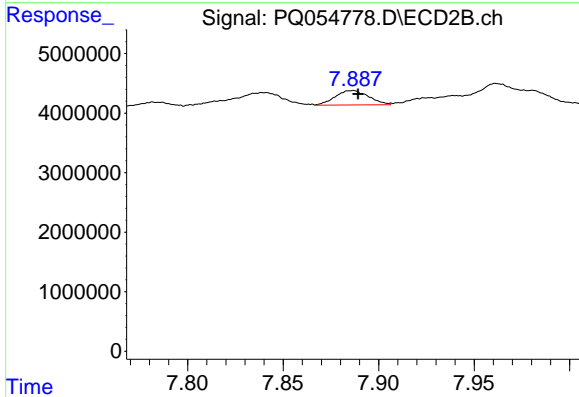
R.T.: 7.402 min
 Delta R.T.: -0.006 min
 Response: 3856588
 Conc: 4.36 ng/ml



#34 AR-1260-4

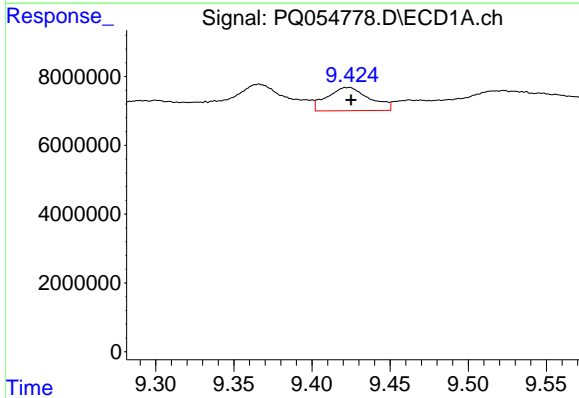
R.T.: 9.079 min
 Delta R.T.: -0.002 min
 Response: 15242723
 Conc: 16.32 ng/ml

Instrument :
 ECD_Q
 ClientSampleId :
 TR-05-092321



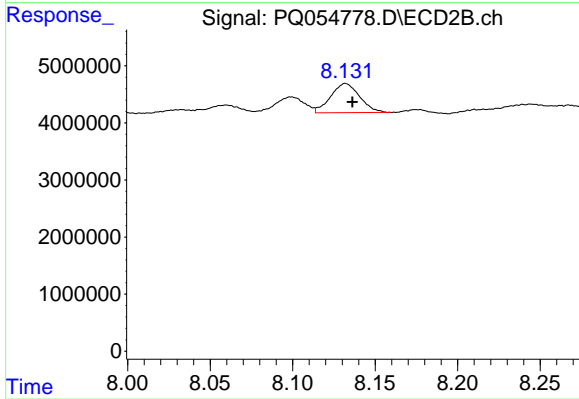
#34 AR-1260-4

R.T.: 7.886 min
 Delta R.T.: -0.003 min
 Response: 2944241
 Conc: 4.25 ng/ml



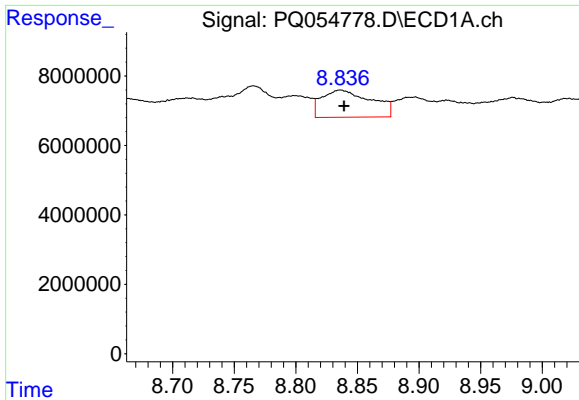
#35 AR-1260-5

R.T.: 9.423 min
 Delta R.T.: -0.002 min
 Response: 12760099
 Conc: 6.92 ng/ml



#35 AR-1260-5

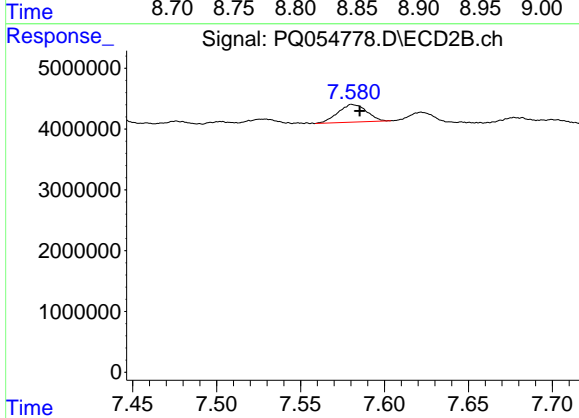
R.T.: 8.132 min
 Delta R.T.: -0.004 min
 Response: 6268311
 Conc: 3.28 ng/ml



#36 AR-1262-1

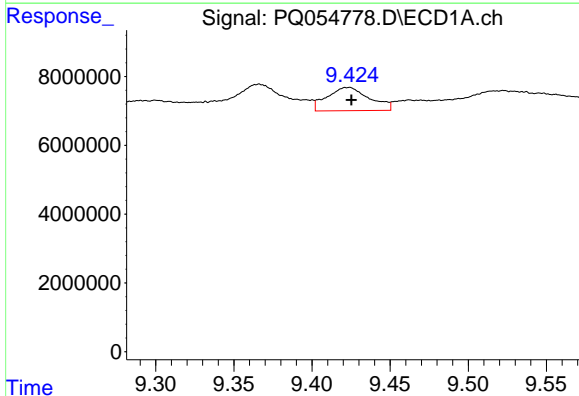
R.T.: 8.836 min
 Delta R.T.: -0.003 min
 Response: 21847648
 Conc: 18.59 ng/ml

Instrument :
 ECD_Q
 ClientSampleId :
 TR-05-092321



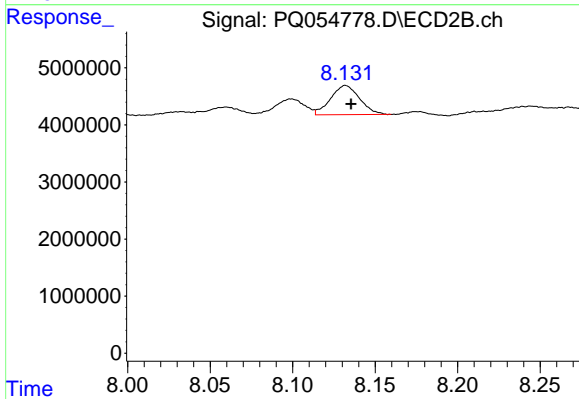
#36 AR-1262-1

R.T.: 7.581 min
 Delta R.T.: -0.004 min
 Response: 3436958
 Conc: 6.65 ng/ml



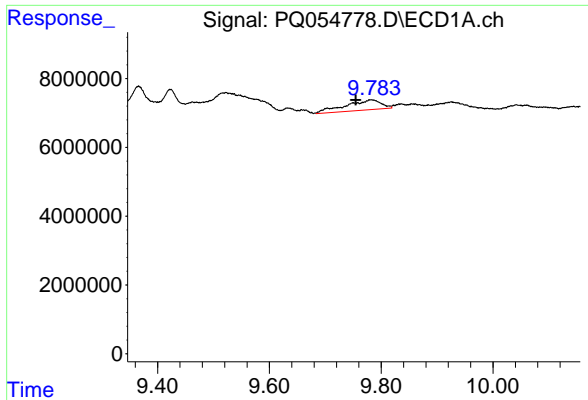
#37 AR-1262-2

R.T.: 9.423 min
 Delta R.T.: -0.002 min
 Response: 12760099
 Conc: 5.88 ng/ml



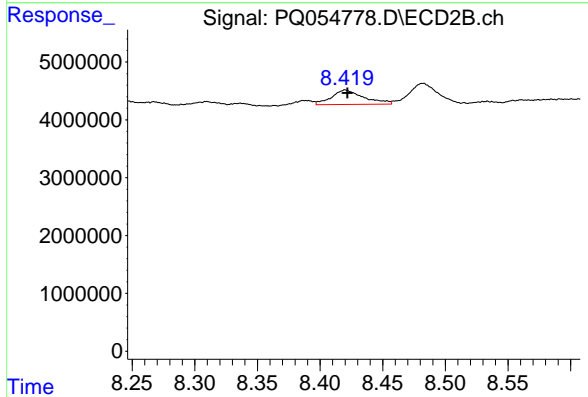
#37 AR-1262-2

R.T.: 8.132 min
 Delta R.T.: -0.003 min
 Response: 6268311
 Conc: 2.83 ng/ml

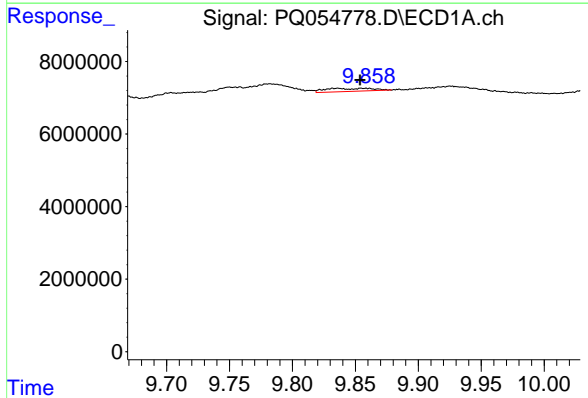


#38 AR-1262-3
 R.T.: 9.782 min
 Delta R.T.: 0.028 min
 Response: 13066743
 Conc: 14.67 ng/ml

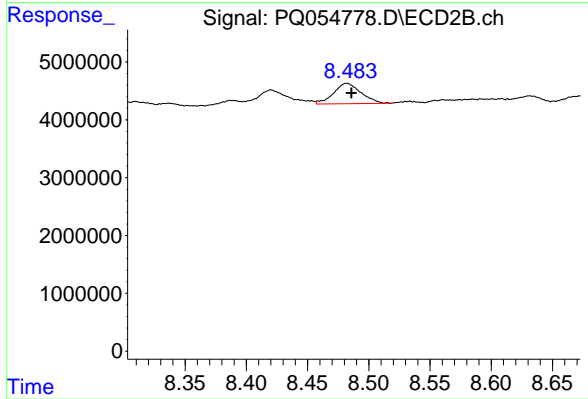
Instrument :
 ECD_Q
 ClientSampleId :
 TR-05-092321



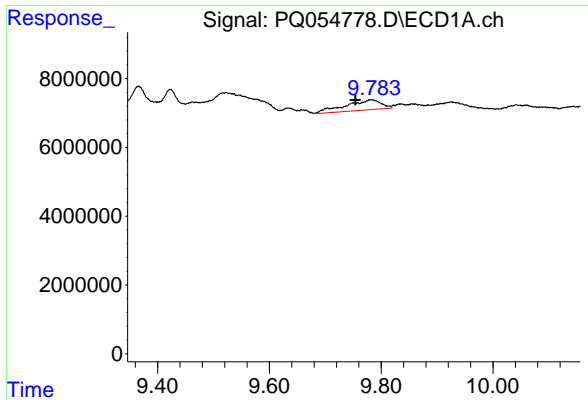
#38 AR-1262-3
 R.T.: 8.420 min
 Delta R.T.: -0.001 min
 Response: 4449500
 Conc: 5.01 ng/ml



#39 AR-1262-4
 R.T.: 9.835 min
 Delta R.T.: -0.018 min
 Response: 2281510
 Conc: 4.04 ng/ml

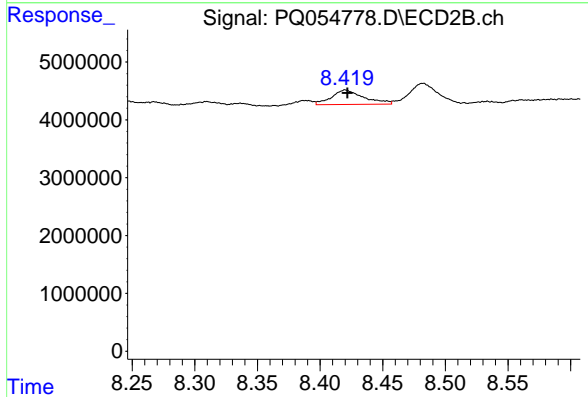


#39 AR-1262-4
 R.T.: 8.482 min
 Delta R.T.: -0.004 min
 Response: 5491148
 Conc: 3.61 ng/ml

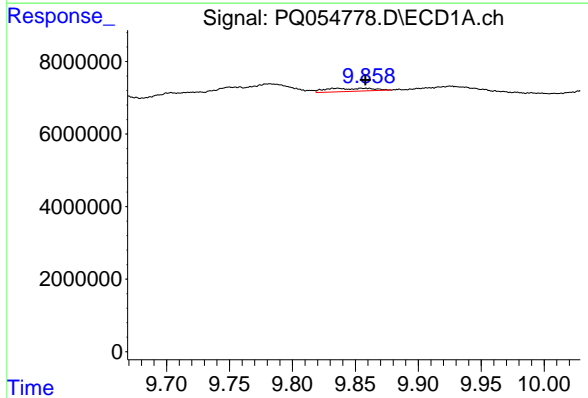


#41 AR-1268-1
 R.T.: 9.782 min
 Delta R.T.: 0.028 min
 Response: 13066743
 Conc: 5.21 ng/ml

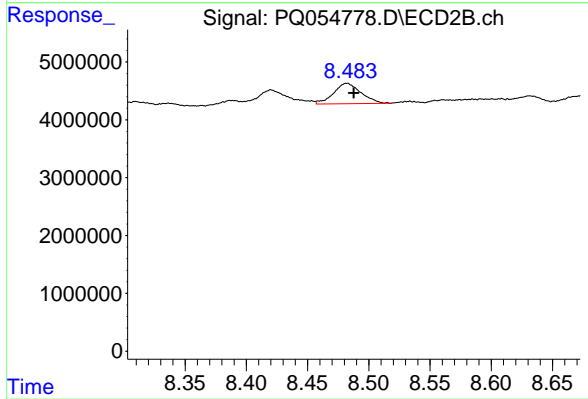
Instrument :
 ECD_Q
 ClientSampleId :
 TR-05-092321



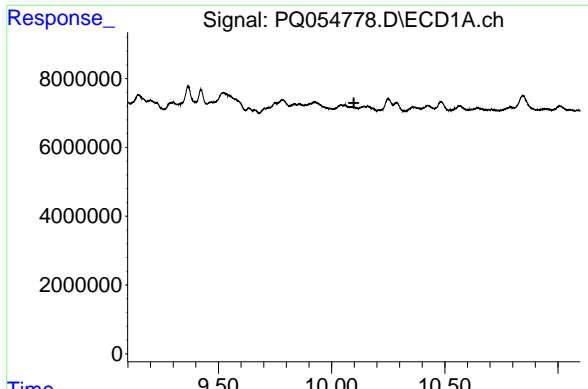
#41 AR-1268-1
 R.T.: 8.420 min
 Delta R.T.: -0.002 min
 Response: 4449500
 Conc: 1.64 ng/ml



#42 AR-1268-2
 R.T.: 9.835 min
 Delta R.T.: -0.023 min
 Response: 2281510
 Conc: 1.00 ng/ml



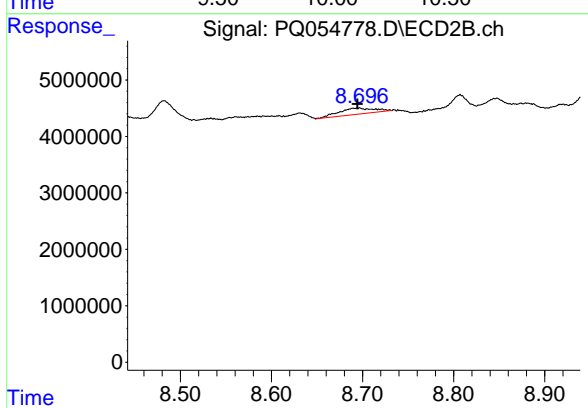
#42 AR-1268-2
 R.T.: 8.482 min
 Delta R.T.: -0.006 min
 Response: 5491148
 Conc: 2.38 ng/ml



#43 AR-1268-3

R.T.: 0.000 min
 Exp R.T.: 10.099 min
 Response: 0
 Conc: N.D.

Instrument :
 ECD_Q
ClientSampled :
 TR-05-092321



#43 AR-1268-3

R.T.: 8.696 min
 Delta R.T.: 0.002 min
 Response: 2946394
 Conc: 1.46 ng/ml