

Data Path : Z:\pestpcbsrv\HPCHEM1\ECD_Q\Data\PQ092721\
 Data File : PQ054761.D
 Signal(s) : Signal #1: ECD1A.ch Signal #2: ECD2B.ch
 Acq On : 27 Sep 2021 09:57
 Operator : AJ\MA
 Sample : I.BLK
 Misc :
 ALS Vial : 2 Sample Multiplier: 1

Instrument :
 ECD_Q
 ClientSampleId :
 I.BLK

Integration File signal 1: autoint1.e
 Integration File signal 2: autoint2.e
 Quant Time: Sep 28 01:54:08 2021
 Quant Method : Z:\pestpcbsrv\HPCHEM1\ECD_Q\Method\PQ091421.M
 Quant Title : GC EXTRACTABLES
 QLast Update : Wed Sep 15 05:25:53 2021
 Response via : Initial Calibration
 Integrator: ChemStation

Volume Inj. : 2 µl
 Signal #1 Phase : ZB-MR1 Signal #2 Phase: ZB-MR2
 Signal #1 Info : 30Mx0.32mmx 0.50µ Signal #2 Info : 30M x 0.32mm x 0.25µm

Compound	RT#1	RT#2	Resp#1	Resp#2	ng/ml	ng/ml

System Monitoring Compounds						
1) SA Tetrachlo...	5.201	4.207	544.8E6	274.6E6	22.812	20.771
2) SA Decachlor...	11.369	9.534	355.0E6	290.8E6	21.036	21.455

Target Compounds

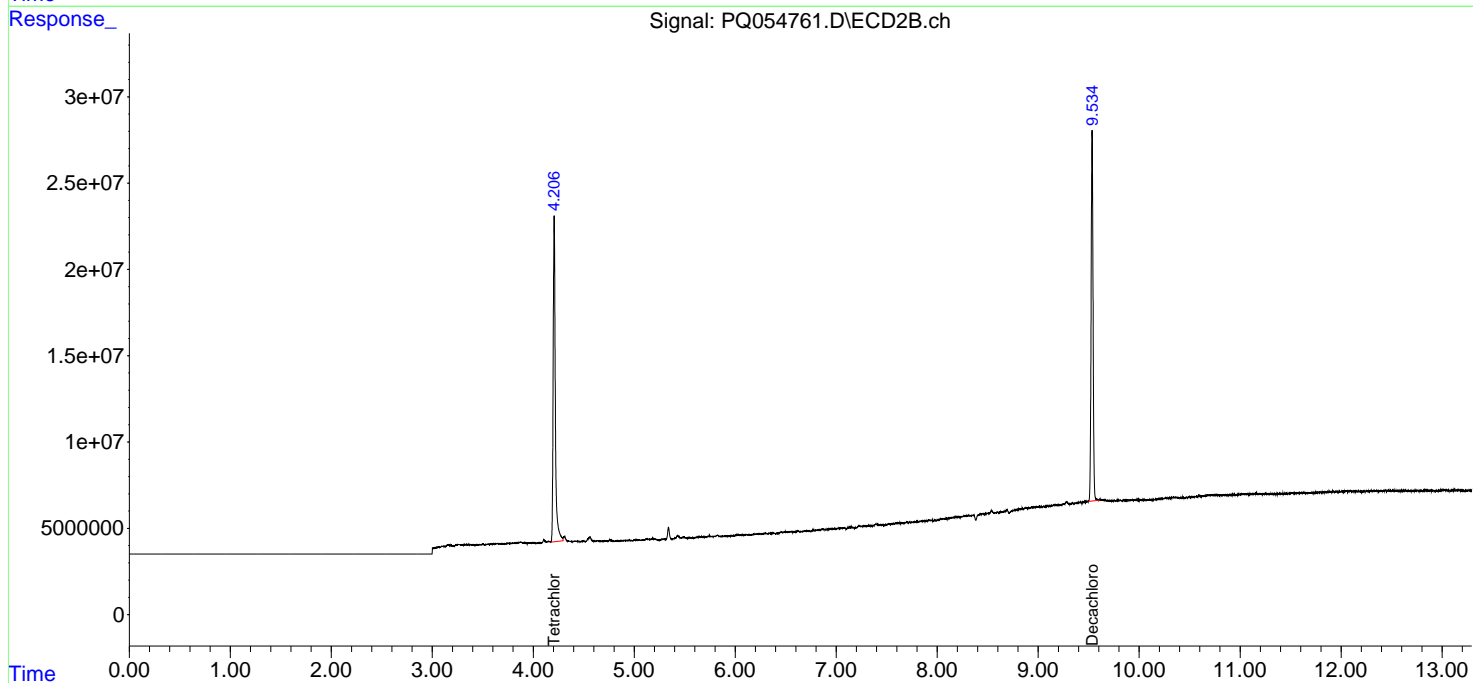
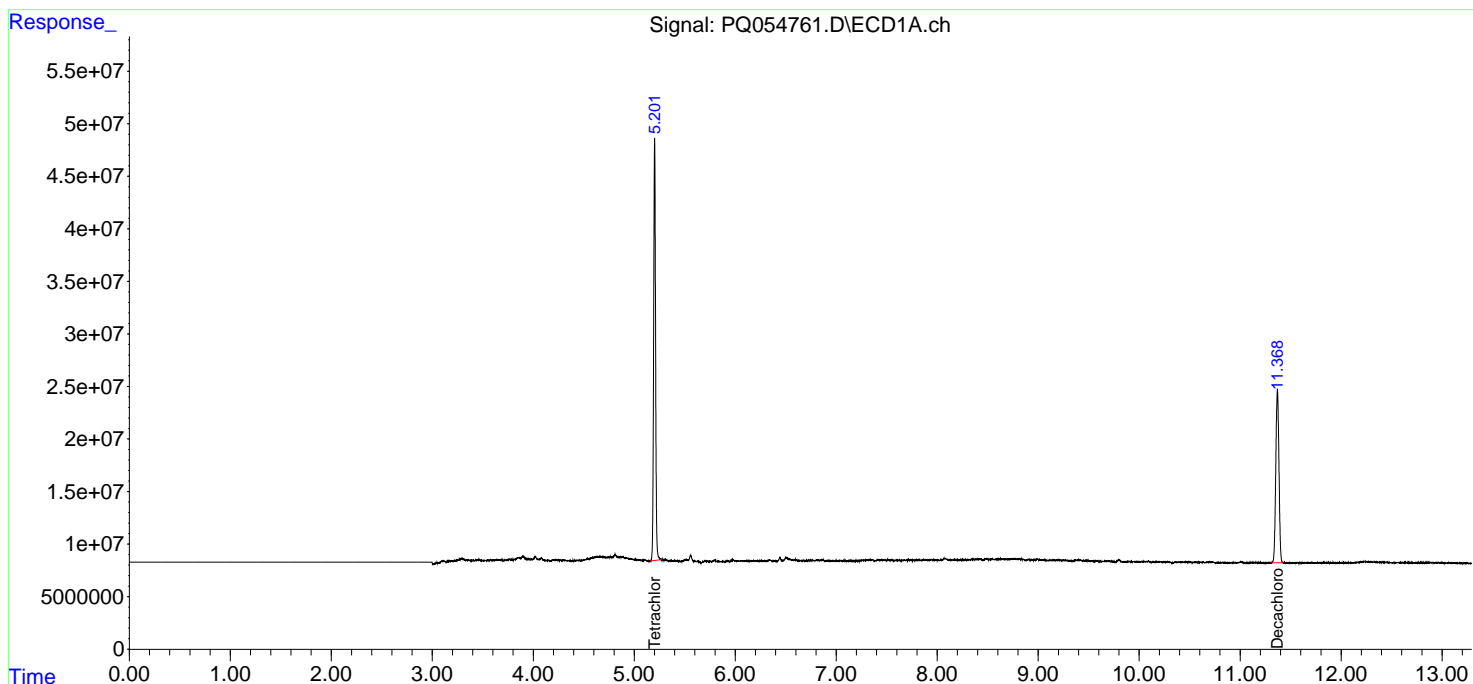
(f)=RT Delta > 1/2 Window (#)=Amounts differ by > 25% (m)=manual int.

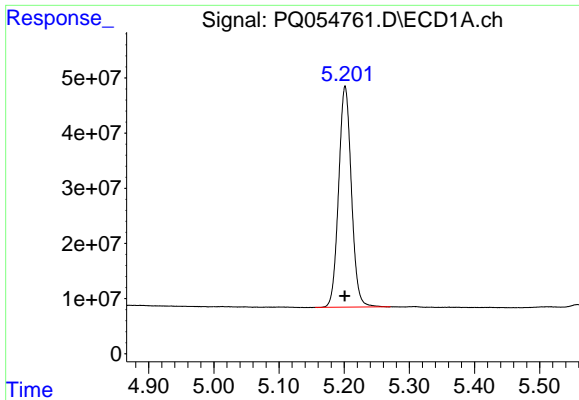
Data Path : Z:\pestpcbsrv\HPCHEM1\ECD_Q\Data\PQ092721\
Data File : PQ054761.D
Signal(s) : Signal #1: ECD1A.ch Signal #2: ECD2B.ch
Acq On : 27 Sep 2021 09:57
Operator : AJ\MA
Sample : I.BLK
Misc :
ALS Vial : 2 Sample Multiplier: 1

Instrument :
ECD_Q
ClientSampled :
I.BLK

Integration File signal 1: autoint1.e
Integration File signal 2: autoint2.e
Quant Time: Sep 28 01:54:08 2021
Quant Method : Z:\pestpcbsrv\HPCHEM1\ECD_Q\Method\PQ091421.M
Quant Title : GC EXTRACTABLES
QLast Update : Wed Sep 15 05:25:53 2021
Response via : Initial Calibration
Integrator: ChemStation

Volume Inj. : 2 µl
Signal #1 Phase : ZB-MR1 Signal #2 Phase: ZB-MR2
Signal #1 Info : 30Mx0.32mmx 0.50µ Signal #2 Info : 30M x 0.32mm x 0.25µm

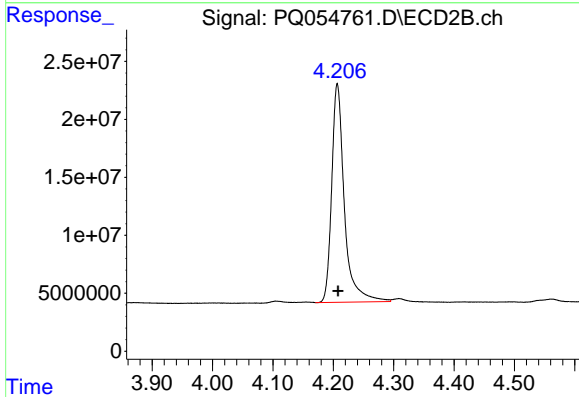




#1 Tetrachloro-m-xylene

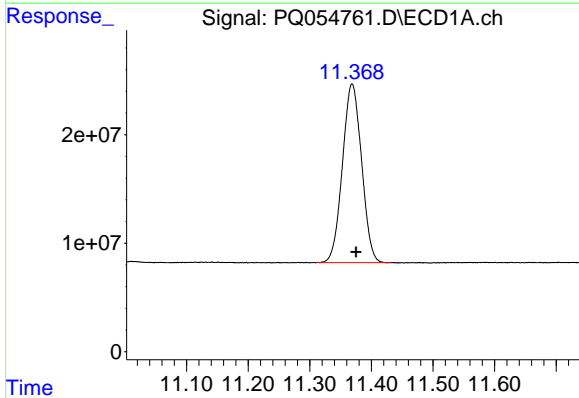
R.T.: 5.201 min
 Delta R.T.: 0.000 min
 Response: 544779438
 Conc: 22.81 ng/ml

Instrument :
 ECD_Q
 ClientSampleId :
 I.BLK



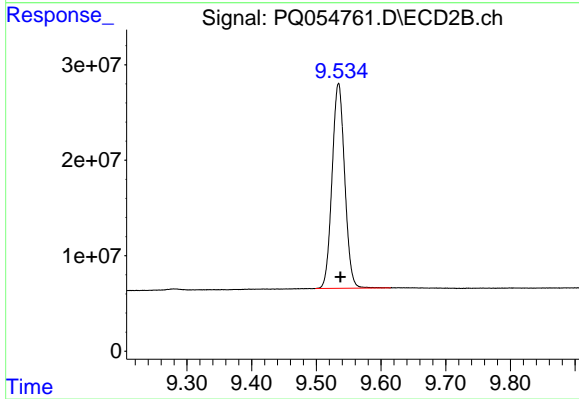
#1 Tetrachloro-m-xylene

R.T.: 4.207 min
 Delta R.T.: -0.001 min
 Response: 274587039
 Conc: 20.77 ng/ml



#2 Decachlorobiphenyl

R.T.: 11.369 min
 Delta R.T.: -0.006 min
 Response: 355039640
 Conc: 21.04 ng/ml



#2 Decachlorobiphenyl

R.T.: 9.534 min
 Delta R.T.: -0.003 min
 Response: 290758663
 Conc: 21.46 ng/ml