

Data Path : Z:\pestpcbsrv\HPCHEM1\ECD_Q\Data\PQ092723\
 Data File : PQ063416.D
 Signal(s) : Signal #1: ECD1A.ch Signal #2: ECD2B.ch
 Acq On : 27 Sep 2023 16:29
 Operator : YP\AJ
 Sample : AR1254CCC500
 Misc :
 ALS Vial : 6 Sample Multiplier: 1

Instrument :
 ECD_Q
 ClientSampleId :
 AR1254CCC500

Integration File signal 1: autoint1.e
 Integration File signal 2: autoint2.e
 Quant Time: Sep 28 01:22:57 2023
 Quant Method : Z:\pestpcbsrv\HPCHEM1\ECD_Q\Method\PQ091923.M
 Quant Title : GC EXTRACTABLES
 QLast Update : Wed Sep 20 05:26:41 2023
 Response via : Initial Calibration
 Integrator: ChemStation

Volume Inj. : 2 µl
 Signal #1 Phase : ZB-MR1 Signal #2 Phase: ZB-MR2
 Signal #1 Info : 30Mx0.32mmx 0.50µ Signal #2 Info : 30M x 0.32mm x 0.25µm

Compound	RT#1	RT#2	Resp#1	Resp#2	ng/ml	ng/ml

System Monitoring Compounds						
1) SA Tetrachlo...	3.463	2.781	243.4E6	178.2E6	51.964	51.563
2) SA Decachlor...	8.697	7.581	178.3E6	167.1E6	51.035	46.481
Target Compounds						
26) L6 AR-1254-1	5.407	4.553	92204521	98313216	458.481	466.268
27) L6 AR-1254-2	5.626	4.700	141.8E6	86313272	465.191	466.351
28) L6 AR-1254-3	5.982	5.084	150.3E6	134.8E6	458.251	471.239
29) L6 AR-1254-4	6.268	5.311	107.0E6	84564128	441.587	456.776
30) L6 AR-1254-5	6.683	5.719	115.4E6	118.5E6	449.550	458.800

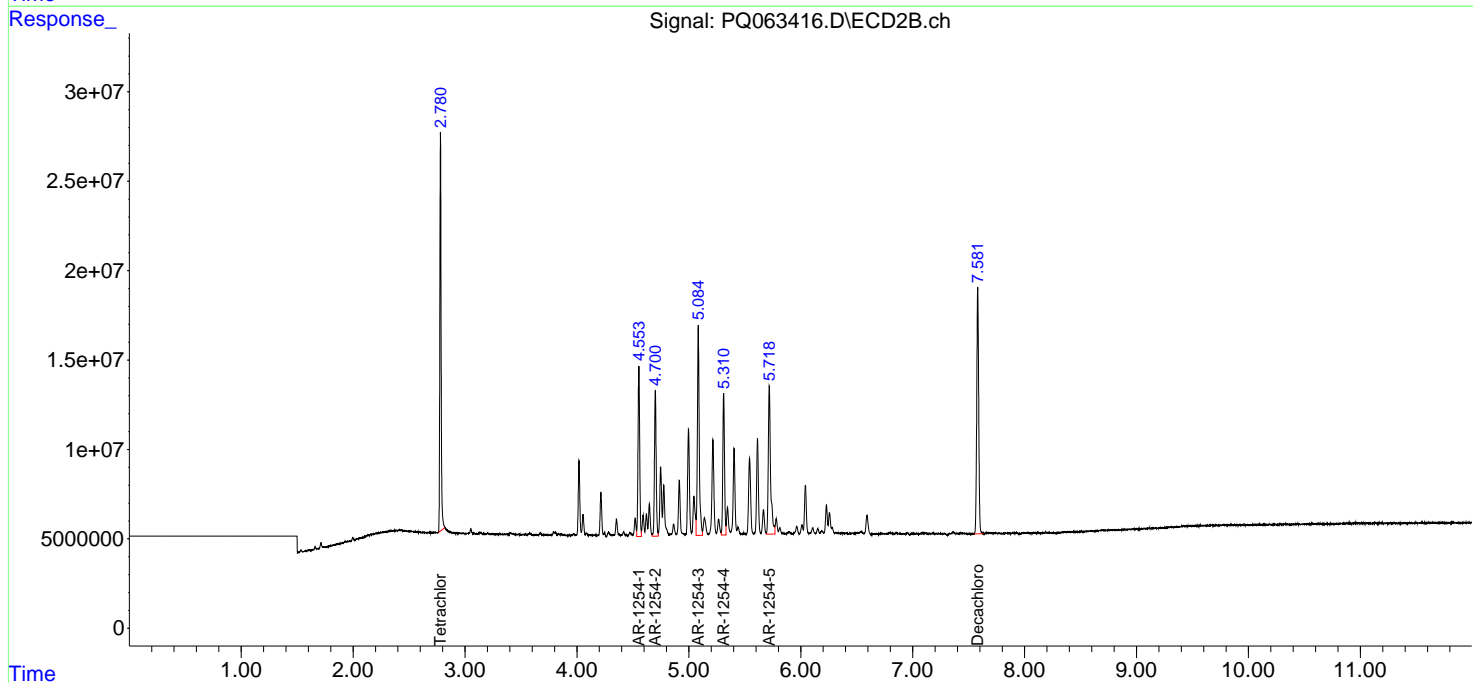
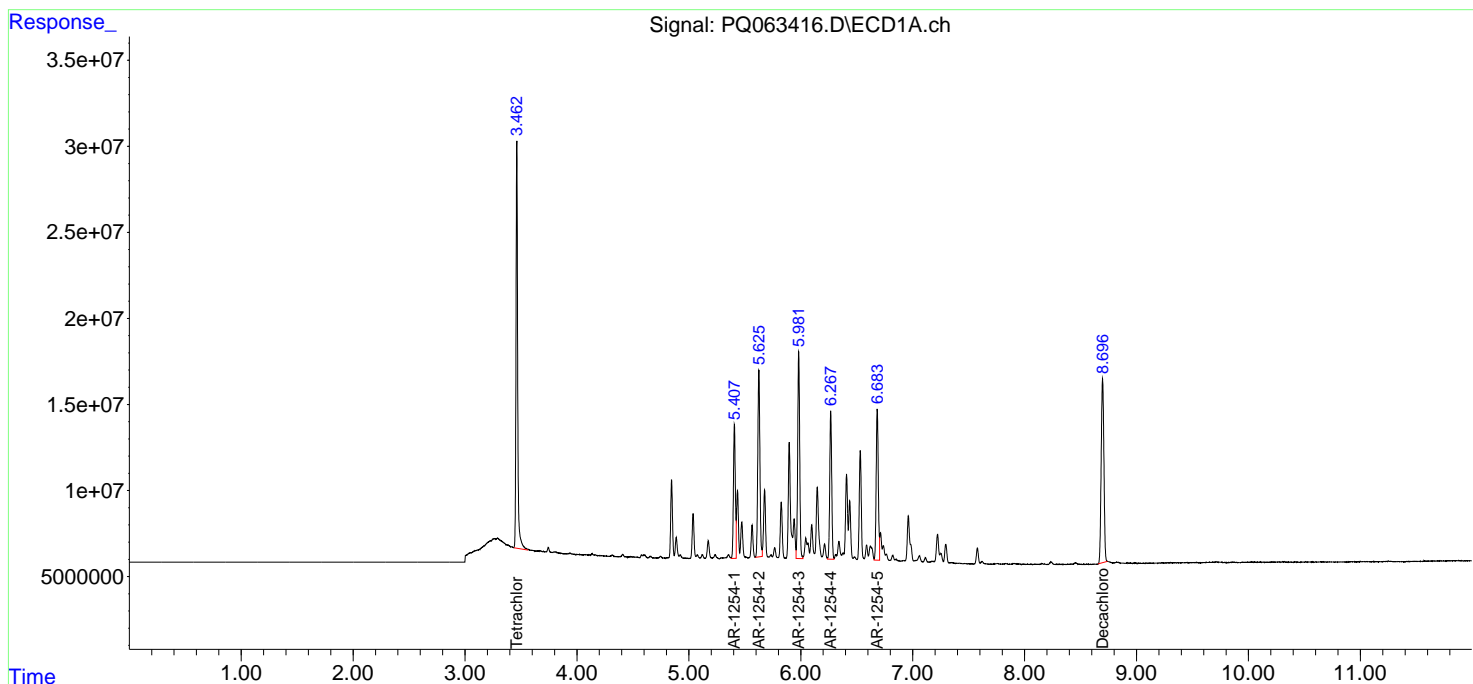
(f)=RT Delta > 1/2 Window (#)=Amounts differ by > 25% (m)=manual int.

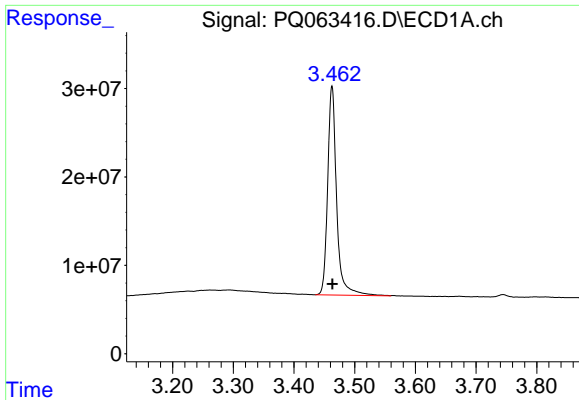
Data Path : Z:\pestpcbsrv\HPCHEM1\ECD_Q\Data\PQ092723\
 Data File : PQ063416.D
 Signal(s) : Signal #1: ECD1A.ch Signal #2: ECD2B.ch
 Acq On : 27 Sep 2023 16:29
 Operator : YP\AJ
 Sample : AR1254CCC500
 Misc :
 ALS Vial : 6 Sample Multiplier: 1

Instrument :
 ECD_Q
 ClientSampleId :
 AR1254CCC500

Integration File signal 1: autoint1.e
 Integration File signal 2: autoint2.e
 Quant Time: Sep 28 01:22:57 2023
 Quant Method : Z:\pestpcbsrv\HPCHEM1\ECD_Q\Method\PQ091923.M
 Quant Title : GC EXTRACTABLES
 QLast Update : Wed Sep 20 05:26:41 2023
 Response via : Initial Calibration
 Integrator: ChemStation

Volume Inj. : 2 µl
 Signal #1 Phase : ZB-MR1 Signal #2 Phase: ZB-MR2
 Signal #1 Info : 30Mx0.32mmx 0.50µ Signal #2 Info : 30M x 0.32mm x 0.25µm

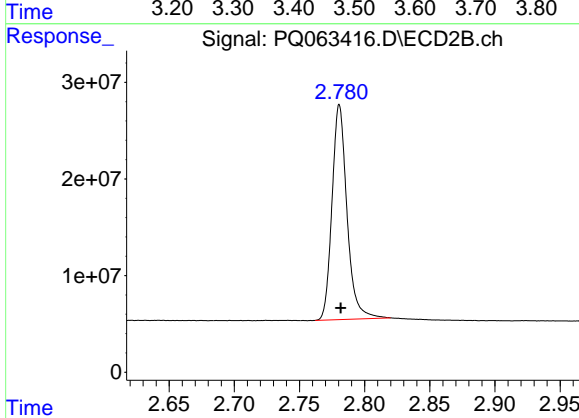




#1 Tetrachloro-m-xylene

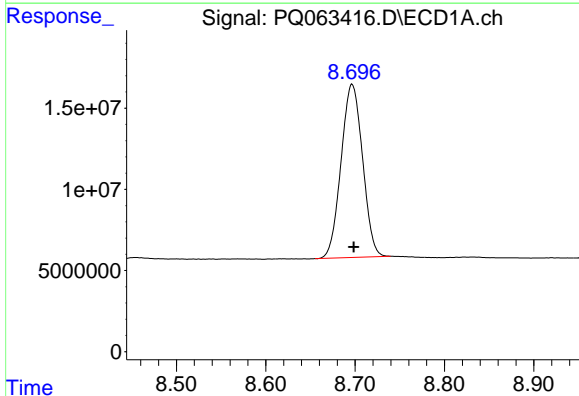
R.T.: 3.463 min
 Delta R.T.: 0.000 min
 Response: 243375485
 Conc: 51.96 ng/ml

Instrument :
 ECD_Q
 ClientSampleId :
 AR1254CCC500



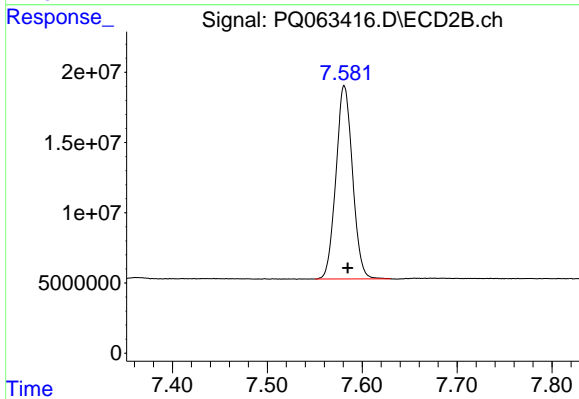
#1 Tetrachloro-m-xylene

R.T.: 2.781 min
 Delta R.T.: 0.000 min
 Response: 178201348
 Conc: 51.56 ng/ml



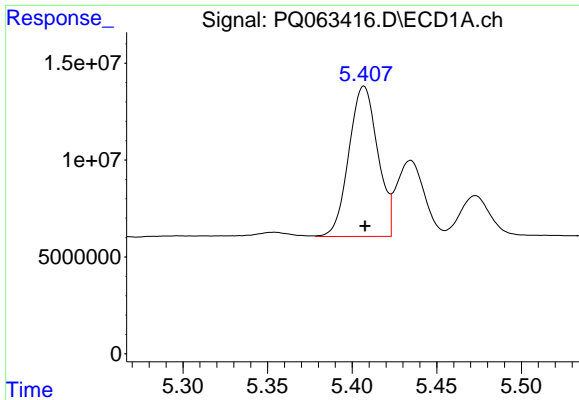
#2 Decachlorobiphenyl

R.T.: 8.697 min
 Delta R.T.: -0.002 min
 Response: 178343106
 Conc: 51.04 ng/ml



#2 Decachlorobiphenyl

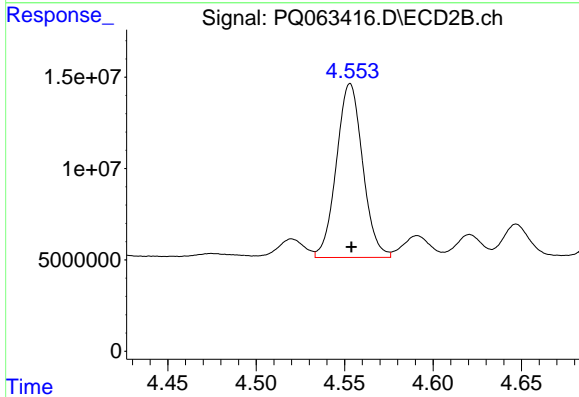
R.T.: 7.581 min
 Delta R.T.: -0.003 min
 Response: 167087591
 Conc: 46.48 ng/ml



#26 AR-1254-1

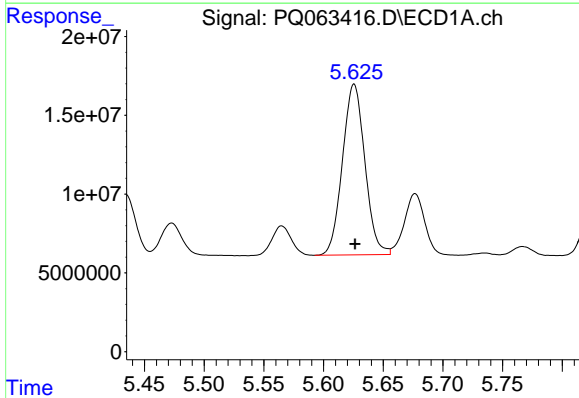
R.T.: 5.407 min
 Delta R.T.: 0.000 min
 Response: 92204521
 Conc: 458.48 ng/ml

Instrument :
 ECD_Q
 ClientSampleId :
 AR1254CCC500



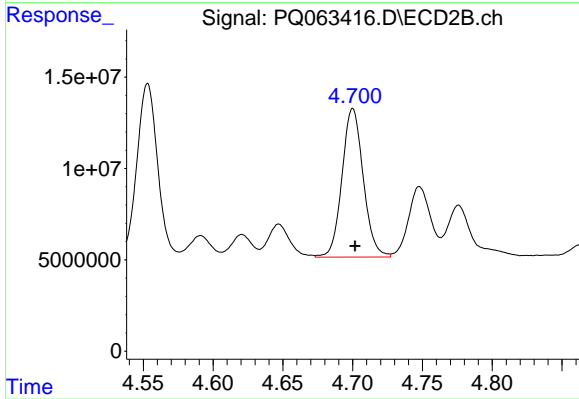
#26 AR-1254-1

R.T.: 4.553 min
 Delta R.T.: 0.000 min
 Response: 98313216
 Conc: 466.27 ng/ml



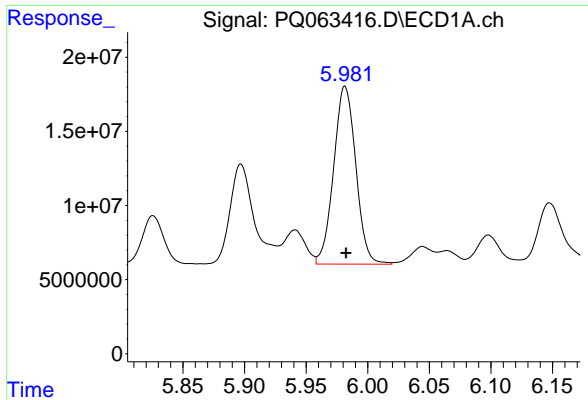
#27 AR-1254-2

R.T.: 5.626 min
 Delta R.T.: 0.000 min
 Response: 141837385
 Conc: 465.19 ng/ml



#27 AR-1254-2

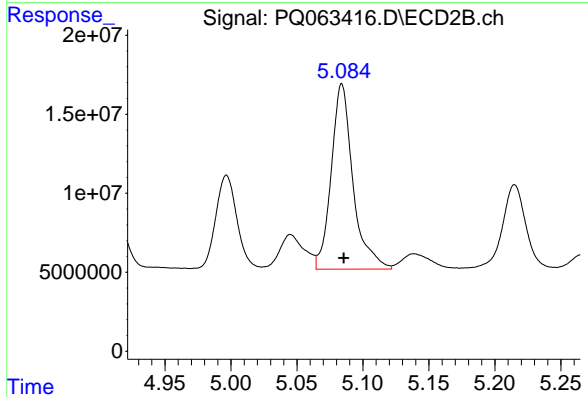
R.T.: 4.700 min
 Delta R.T.: -0.001 min
 Response: 86313272
 Conc: 466.35 ng/ml



#28 AR-1254-3

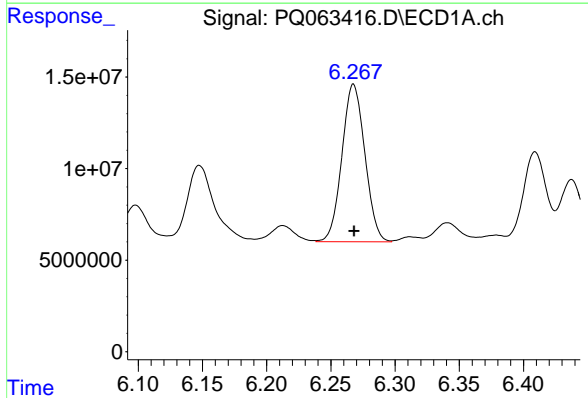
R.T.: 5.982 min
 Delta R.T.: 0.000 min
 Response: 150325424
 Conc: 458.25 ng/ml

Instrument :
 ECD_Q
 ClientSampleId :
 AR1254CCC500



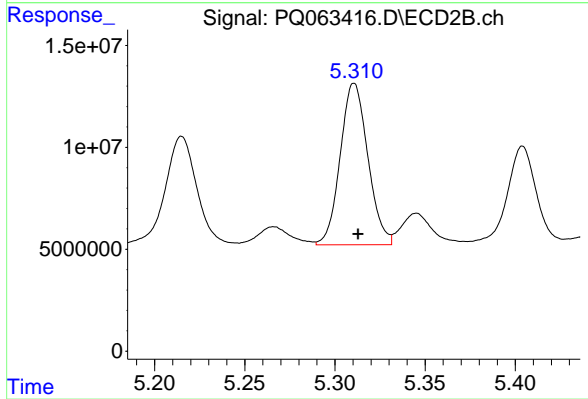
#28 AR-1254-3

R.T.: 5.084 min
 Delta R.T.: -0.001 min
 Response: 134834334
 Conc: 471.24 ng/ml



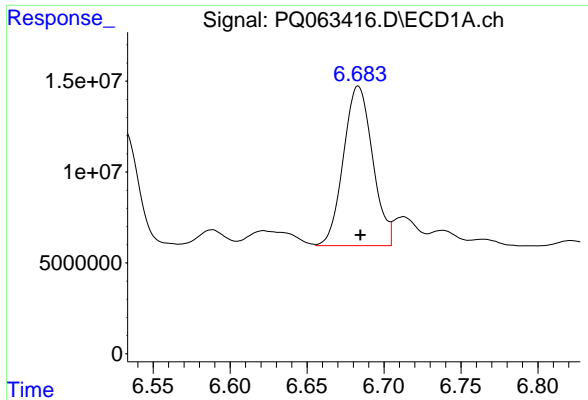
#29 AR-1254-4

R.T.: 6.268 min
 Delta R.T.: 0.000 min
 Response: 106955668
 Conc: 441.59 ng/ml



#29 AR-1254-4

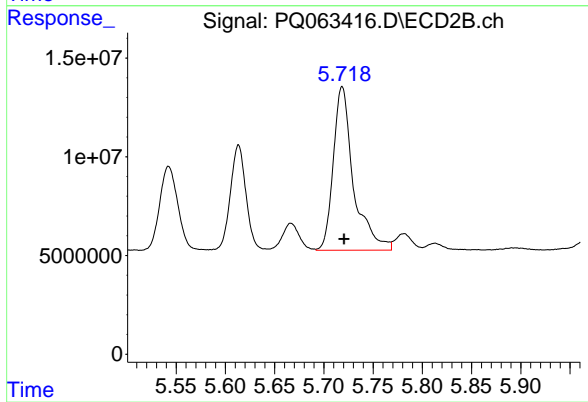
R.T.: 5.311 min
 Delta R.T.: -0.002 min
 Response: 84564128
 Conc: 456.78 ng/ml



#30 AR-1254-5

R.T.: 6.683 min
Delta R.T.: -0.001 min
Response: 115449736
Conc: 449.55 ng/ml

Instrument :
ECD_Q
ClientSampleId :
AR1254CCC500



#30 AR-1254-5

R.T.: 5.719 min
Delta R.T.: -0.002 min
Response: 118538618
Conc: 458.80 ng/ml