

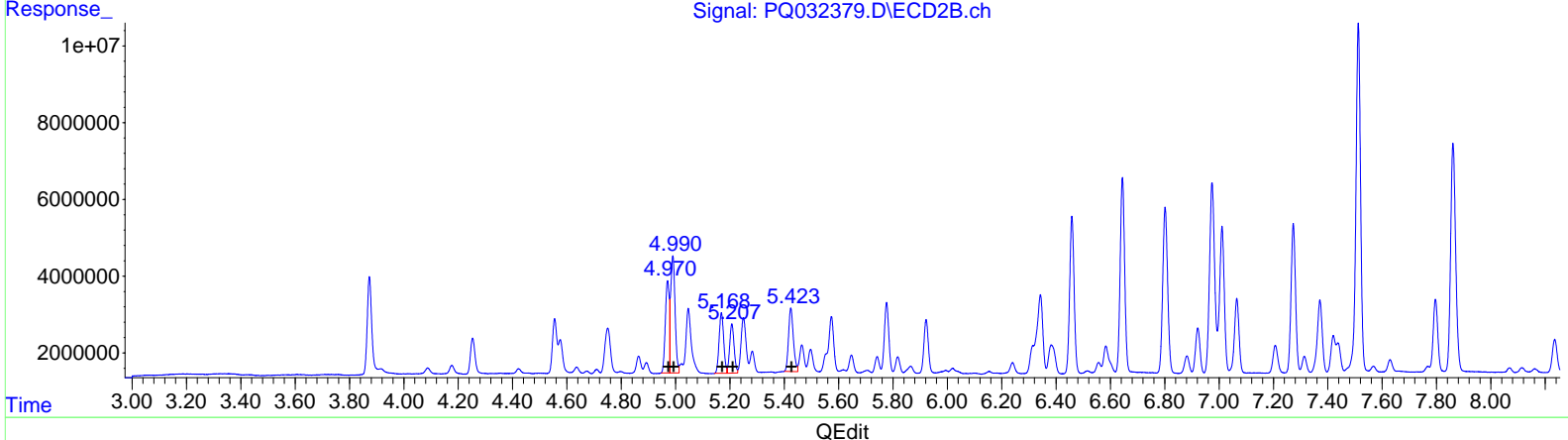
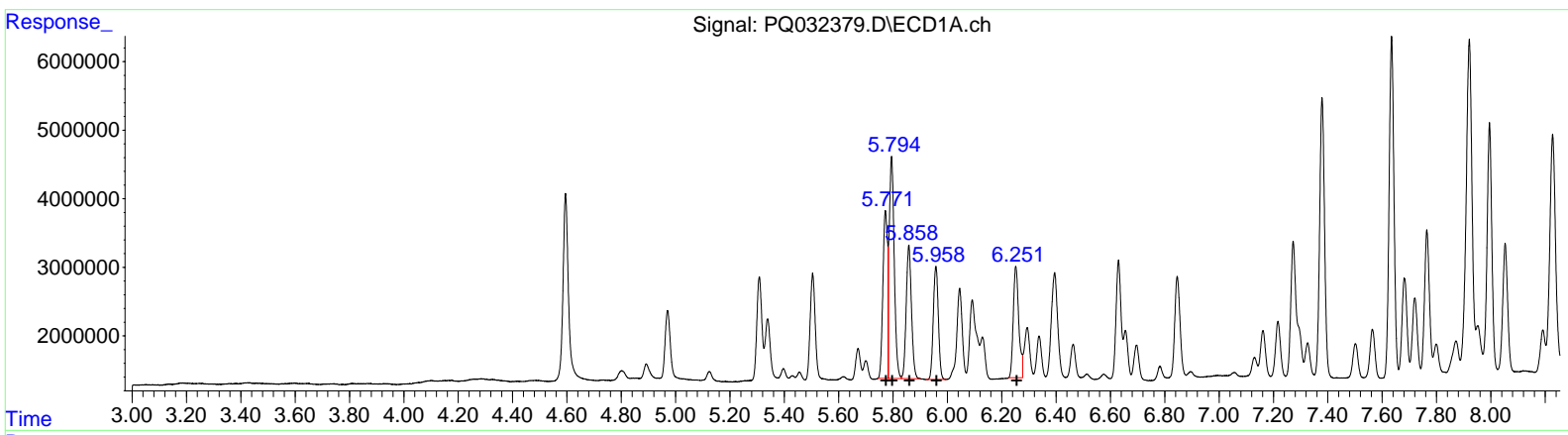
Data Path : Z:\pestpcbsrv\HPCHEM1\ECD_Q\Data\PQ092818\
 Data File : PQ032379.D
 Signal(s) : Signal #1: ECD1A.ch Signal #2: ECD2B.ch
 Acq On : 29 Sep 2018 01:42
 Operator : SM\SJ
 Sample : AR1660CCC400
 Misc :
 ALS Vial : 3 Sample Multiplier: 1

Instrument :
 ECD_Q
LabSampleId :
 AR1660341

Manual Integrations
APPROVED
 Sohil
 10/2/2018 6:33:30 AM

Integration File signal 1: autoint1.e
 Integration File signal 2: autoint2.e
 Quant Time: Oct 01 05:43:09 2018
 Quant Method : Z:\pestpcbsrv\HPCHEM1\ECD_Q\Method\PQ092618CLP.M
 Quant Title : GC EXTRACTABLES
 QLast Update : Thu Sep 27 08:45:59 2018
 Response via : Initial Calibration
 Integrator: ChemStation

Volume Inj. : 1 µl
 Signal #1 Phase : ZB MR1 Signal #2 Phase: ZB MR2
 Signal #1 Info : 30Mx0.32mmx 0.5µm Signal #2 Info : 30M x 0.32mm x 0.25µm



QEdit

(3) AR-1016-1 (L1)		
R.T.	Response	Conc
5.77	28700147	471.14
5.79	41660309	453.97
5.86	26011124	454.78
5.96	21311075	455.37
6.25	22792542	454.47
(3) AR-1016-1 #2 (L1)		
R.T.	Response	Conc
4.97	24078134	468.23
4.99	34613660	471.76
5.17	18615603	519.89
5.21	14568832	448.93
5.42	20435238	468.77

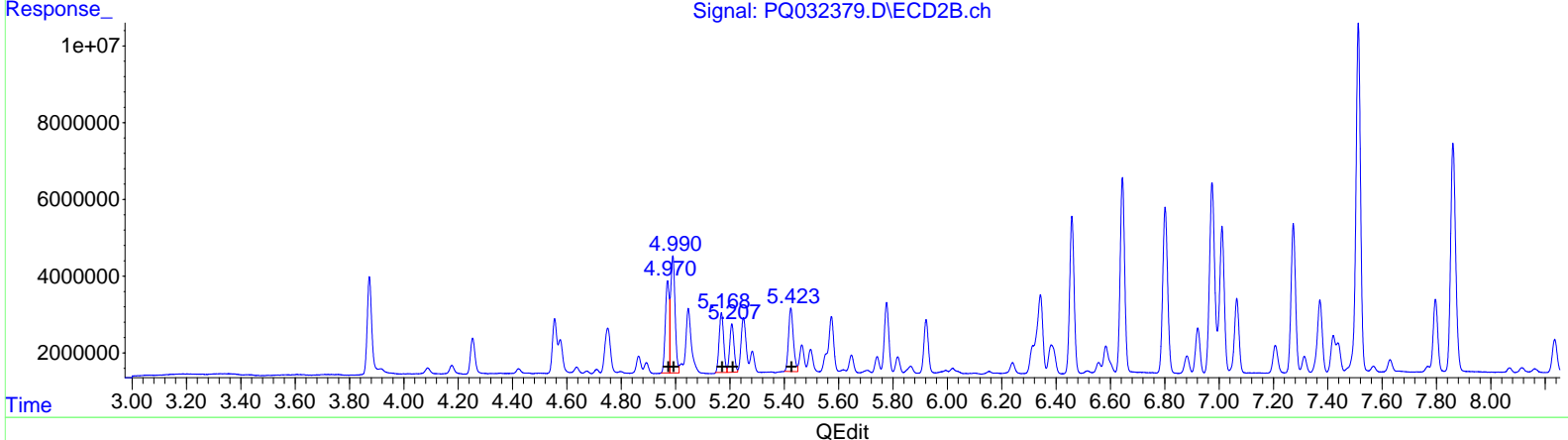
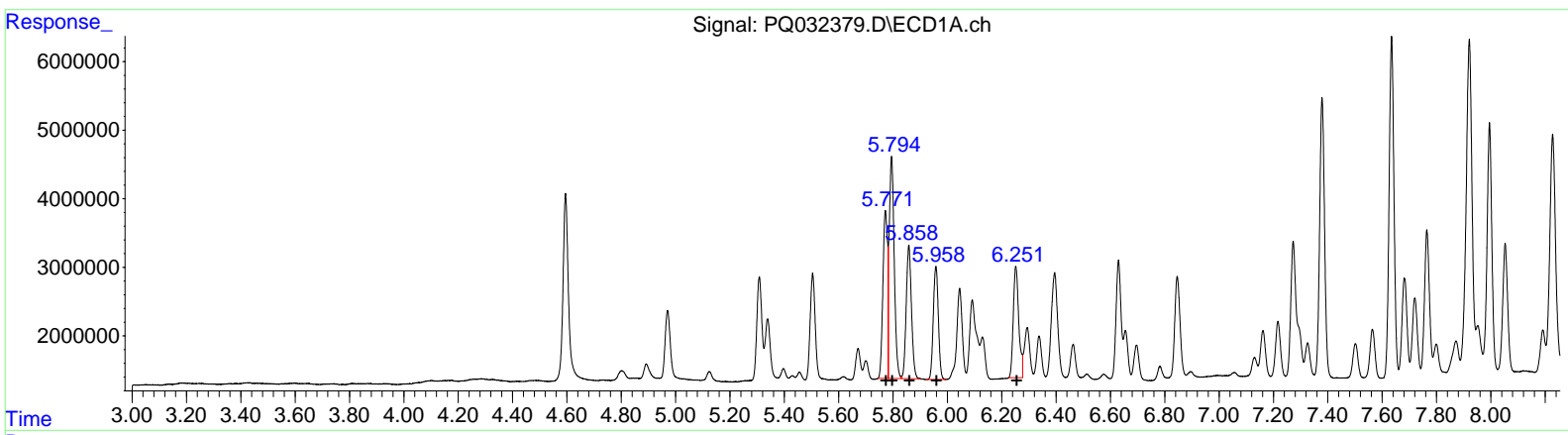
Data Path : Z:\pestpcbsrv\HPCHEM1\ECD_Q\Data\PQ092818\
 Data File : PQ032379.D
 Signal(s) : Signal #1: ECD1A.ch Signal #2: ECD2B.ch
 Acq On : 29 Sep 2018 01:42
 Operator : SM\SJ
 Sample : AR1660CCC400
 Misc :
 ALS Vial : 3 Sample Multiplier: 1

Instrument :
 ECD_Q
LabSampleId :
 AR1660341

Manual Integrations
APPROVED
 Sohil
 10/2/2018 6:33:30 AM

Integration File signal 1: autoint1.e
 Integration File signal 2: autoint2.e
 Quant Time: Sep 29 05:24:34 2018
 Quant Method : Z:\pestpcbsrv\HPCHEM1\ECD_Q\Method\PQ092618CLP.M
 Quant Title : GC EXTRACTABLES
 QLast Update : Thu Sep 27 08:45:59 2018
 Response via : Initial Calibration
 Integrator: ChemStation

Volume Inj. : 1 µl
 Signal #1 Phase : ZB MR1 Signal #2 Phase: ZB MR2
 Signal #1 Info : 30Mx0.32mmx 0.5µm Signal #2 Info : 30M x 0.32mm x 0.25µm



QEdit

(3) AR-1016-1 (L1)

R.T.	Response	Conc
5.77	28700147	471.14
5.79	41660309	453.97
5.86	26011124	454.78
5.96	21311075	455.37
6.25	22792542	454.47

(3) AR-1016-1 #2 (L1)

R.T.	Response	Conc
4.97	24078134	468.23
4.99	34613660	471.76
5.17	17861146	498.82
5.21	13939504	429.54
5.42	20435238	468.77

Quantitation Report (QT Reviewed)

Data Path : Z:\pestpcbsrv\HPCHEM1\ECD_Q\Data\PQ092818\
 Data File : PQ032379.D
 Signal(s) : Signal #1: ECD1A.ch Signal #2: ECD2B.ch
 Acq On : 29 Sep 2018 01:42
 Operator : SM\SJ
 Sample : AR1660CCC400
 Misc :
 ALS Vial : 3 Sample Multiplier: 1

Instrument :
 ECD_Q
 LabSampleId :
 AR1660341

Manual Integrations
 APPROVED

Sohil
 10/2/2018 6:33:30 AM

Integration File signal 1: autoint1.e
 Integration File signal 2: autoint2.e
 Quant Time: Sep 29 05:24:34 2018
 Quant Method : Z:\pestpcbsrv\HPCHEM1\ECD_Q\Method\PQ092618CLP.M
 Quant Title : GC EXTRACTABLES
 QLast Update : Thu Sep 27 08:45:59 2018
 Response via : Initial Calibration
 Integrator: ChemStation

Volume Inj. : 1 µl
 Signal #1 Phase : ZB MR1 Signal #2 Phase: ZB MR2
 Signal #1 Info : 30Mx0.32mmx 0.5µm Signal #2 Info : 30M x 0.32mm x 0.25µm

Compound	RT#1	RT#2	Resp#1	Resp#2	ng/ml	ng/ml

System Monitoring Compounds						
1) SA Tetrachlo...	4.595	3.873	36915529	27358498	24.005	23.709
2) SA Decachlor...	10.448	8.945	88545962	79232754	38.288	39.596
Target Compounds						
3) L1 AR-1016-1	5.772	4.971	28700147	24078134	471.139	468.230
4) L1 AR-1016-2	5.795	4.990	41660309	34613660	453.968	471.761
5) L1 AR-1016-3	5.858	5.168	26011124	17861146	454.776	498.818m
6) L1 AR-1016-4	5.958	5.207	21311075	13939504	455.372	429.541m
7) L1 AR-1016-5	6.252	5.424	22792542	20435238	454.467	468.774
31) L7 AR-1260-1	7.379	6.458	51804764	46940512	437.914	429.956
32) L7 AR-1260-2	7.635	6.644	61710575	58614918	428.912	432.718
33) L7 AR-1260-3	7.995	6.801	45310332	54449225	433.794	431.952
34) L7 AR-1260-4	8.227	7.273	52343494	45053402	418.088	423.503
35) L7 AR-1260-5	8.560	7.512	104.7E6	109.7E6	405.032	413.040

} } SJ 10/02/18

(f)=RT Delta > 1/2 Window (#)=Amounts differ by > 25% (m)=manual int.