

Data Path : Z:\pestpcbsrv\HPCHEM1\ECD\_Q\Data\PQ092823\  
 Data File : PQ063442.D  
 Signal(s) : Signal #1: ECD1A.ch Signal #2: ECD2B.ch  
 Acq On : 28 Sep 2023 09:59  
 Operator : YP\AJ  
 Sample : 04613-05RE  
 Misc :  
 ALS Vial : 8 Sample Multiplier: 1

**Instrument :**  
 ECD\_Q  
**ClientSampleId :**  
 1034RE

**Manual Integrations**  
**APPROVED**

Reviewed By :Yogesh Patel 09/29/2023  
 Supervised By :Ankita Jodhani 09/29/2023

Integration File signal 1: autoint1.e  
 Integration File signal 2: autoint2.e  
 Quant Time: Sep 28 15:32:39 2023  
 Quant Method : Z:\pestpcbsrv\HPCHEM1\ECD\_Q\Method\PQ091923.M  
 Quant Title : GC EXTRACTABLES  
 QLast Update : Wed Sep 20 05:26:41 2023  
 Response via : Initial Calibration  
 Integrator: ChemStation

Volume Inj. : 2 µl  
 Signal #1 Phase : ZB-MR1 Signal #2 Phase: ZB-MR2  
 Signal #1 Info : 30Mx0.32mmx 0.50µ Signal #2 Info : 30M x 0.32mm x 0.25µm

Compound	RT#1	RT#2	Resp#1	Resp#2	ng/ml	ng/ml
----------	------	------	--------	--------	-------	-------

-----  
 System Monitoring Compounds

1) SA Tetrachlo...	3.480	2.766	1965.7E6	366.9E6	419.709m	106.178m#
2) SA Decachlor...	8.722	7.589	72575194	68667260	20.768m	19.102

Target Compounds  
 -----

(f)=RT Delta > 1/2 Window (#)=Amounts differ by > 25% (m)=manual int.

Data Path : Z:\pestpcbsrv\HPCHEM1\ECD\_Q\Data\PQ092823\  
Data File : PQ063442.D  
Signal(s) : Signal #1: ECD1A.ch Signal #2: ECD2B.ch  
Acq On : 28 Sep 2023 09:59  
Operator : YP\AJ  
Sample : 04613-05RE  
Misc :  
ALS Vial : 8 Sample Multiplier: 1

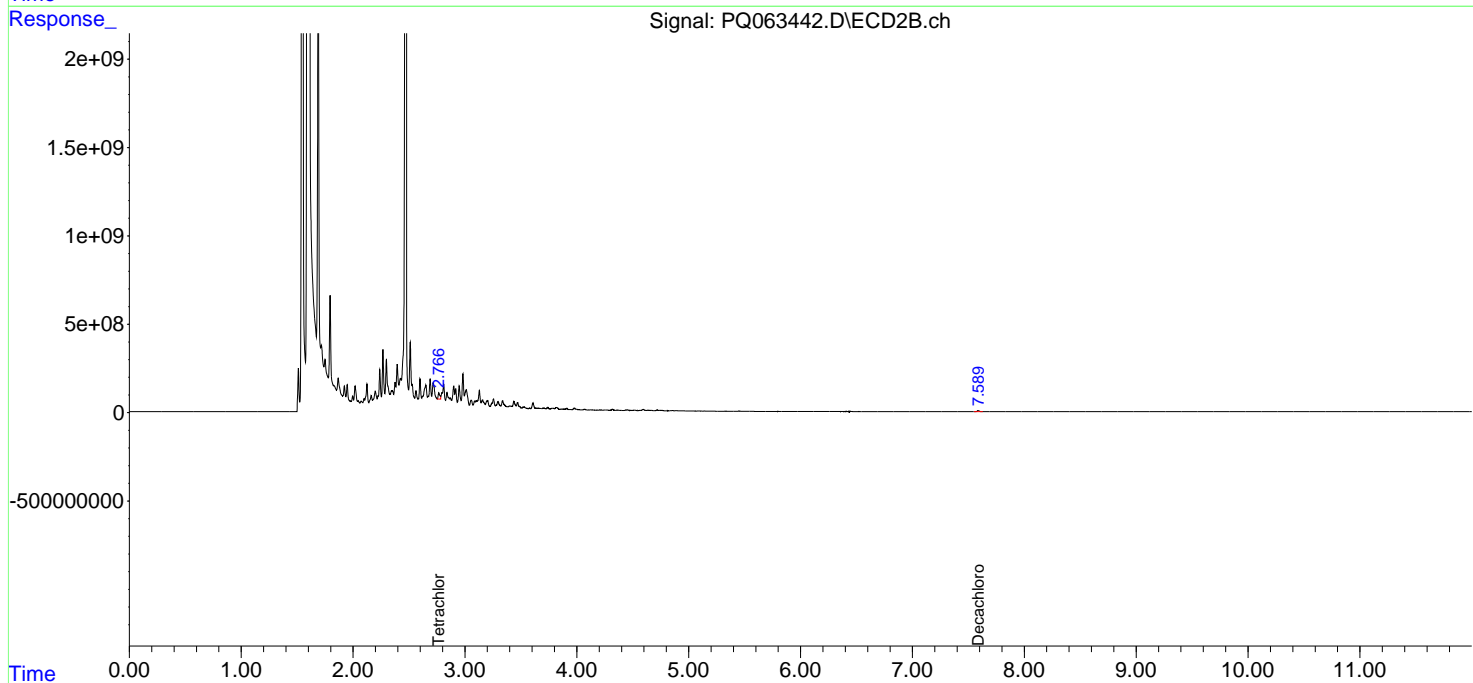
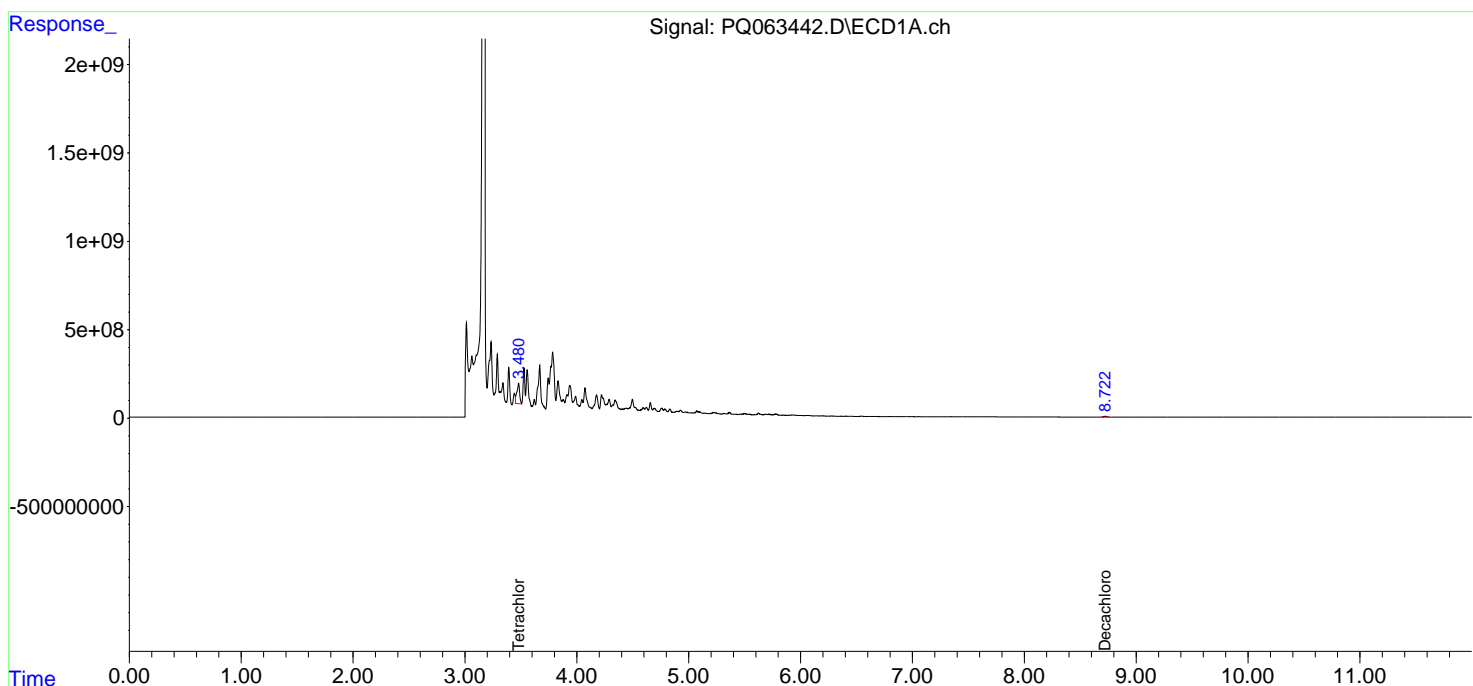
Instrument :  
ECD\_Q  
ClientSampleId :  
1034RE

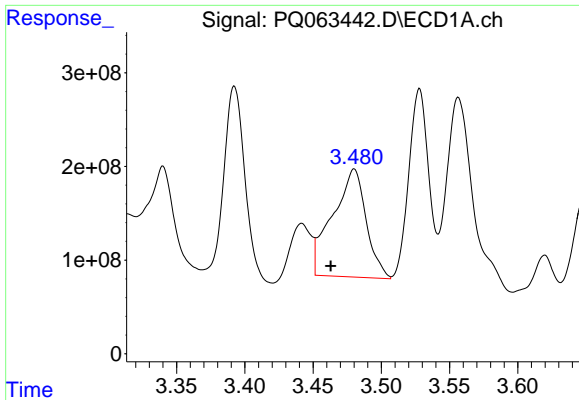
Manual Integrations  
APPROVED

Reviewed By :Yogesh Patel 09/29/2023  
Supervised By :Ankita Jodhani 09/29/2023

Integration File signal 1: autoint1.e  
Integration File signal 2: autoint2.e  
Quant Time: Sep 28 15:32:39 2023  
Quant Method : Z:\pestpcbsrv\HPCHEM1\ECD\_Q\Method\PQ091923.M  
Quant Title : GC EXTRACTABLES  
QLast Update : Wed Sep 20 05:26:41 2023  
Response via : Initial Calibration  
Integrator: ChemStation

Volume Inj. : 2 µl  
Signal #1 Phase : ZB-MR1 Signal #2 Phase: ZB-MR2  
Signal #1 Info : 30Mx0.32mmx 0.50µ Signal #2 Info : 30M x 0.32mm x 0.25µm

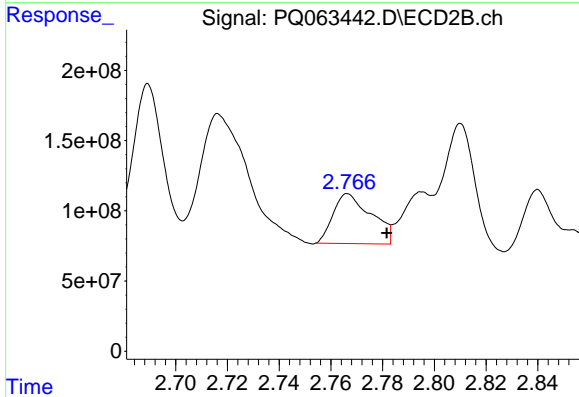




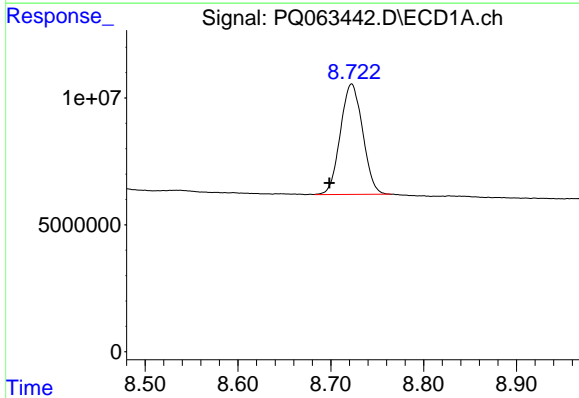
#1 Tetrachloro-m-xylene  
 R.T.: 3.480 min  
 Delta R.T.: 0.017 min  
 Response: 1965721183  
 Conc: 419.71 ng/ml

Instrument :  
 ECD\_Q  
 ClientSampleId :  
 1034RE

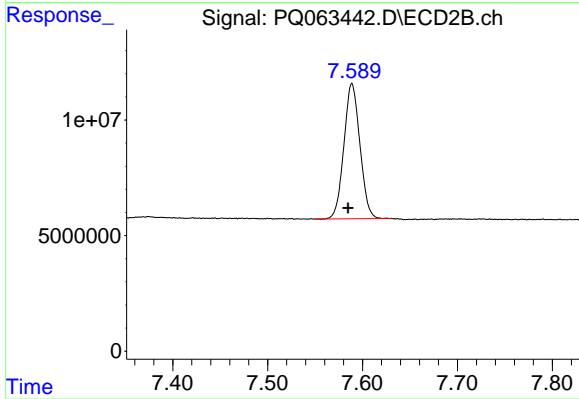
Manual Integrations  
**APPROVED**  
 Reviewed By :Yogesh Patel 09/29/2023  
 Supervised By :Ankita Jodhani 09/29/2023



#1 Tetrachloro-m-xylene  
 R.T.: 2.766 min  
 Delta R.T.: -0.016 min  
 Response: 366949734  
 Conc: 106.18 ng/ml m



#2 Decachlorobiphenyl  
 R.T.: 8.722 min  
 Delta R.T.: 0.024 min  
 Response: 72575194  
 Conc: 20.77 ng/ml m



#2 Decachlorobiphenyl  
 R.T.: 7.589 min  
 Delta R.T.: 0.004 min  
 Response: 68667260  
 Conc: 19.10 ng/ml