

Data Path : Z:\pestpcbsrv\HPCHEM1\ECD_Q\Data\PQ100218\
 Data File : PQ032518.D
 Signal(s) : Signal #1: ECD1A.ch Signal #2: ECD2B.ch
 Acq On : 02 Oct 2018 19:22
 Operator : SM\SJ
 Sample : J5187-02
 Misc :
 ALS Vial : 13 Sample Multiplier: 1

Instrument :
 ECD_Q
 ClientSampled :

Integration File signal 1: autoint1.e
 Integration File signal 2: autoint2.e
 Quant Time: Oct 03 01:56:37 2018
 Quant Method : Z:\pestpcbsrv\HPCHEM1\ECD_Q\Method\PQ091818.M
 Quant Title : GC EXTRACTABLES
 QLast Update : Wed Sep 19 02:07:33 2018
 Response via : Initial Calibration
 Integrator: ChemStation

Volume Inj. : 2 µl
 Signal #1 Phase : ZB-MR1 Signal #2 Phase: ZB-MR2
 Signal #1 Info : 30Mx0.32mmx 0.50µ Signal #2 Info : 30M x 0.32mm x 0.25µm

Compound	RT#1	RT#2	Resp#1	Resp#2	ng/ml	ng/ml
System Monitoring Compounds						
1) SA Tetrachlo...	4.590	3.868	43838688	34210438	18.907	17.082
2) SA Decachlor...	10.443	8.939	29909109	24966379	14.347	12.893
Target Compounds						
3) L1 AR-1016-1	0.000	4.610	0	2183563	N.D.	45.255 #
4) L1 AR-1016-2	5.537	4.968	1443721	227456	27.531	3.371 #
5) L1 AR-1016-3	0.000	4.985	0	433343	N.D.	4.638 #
6) L1 AR-1016-4	0.000	4.985	0	433343	N.D.	7.299 #
7) L1 AR-1016-5	0.000	5.419	0	411217	N.D.	7.868 #
8) L2 AR-1221-1	4.869	4.105	2706809	874779	114.796	43.150 #
9) L2 AR-1221-2	4.869	4.172	2706809	1195000	154.212	76.490 #
10) L2 AR-1221-3	4.980	4.258	4052186	2804858	73.165	57.274
11) L3 AR-1232-1	0.000	4.766	0	2087257	N.D.	119.750 #
12) L3 AR-1232-2	0.000	4.867	0	2525349	N.D.	500.502 #
13) L3 AR-1232-3	6.068	5.278	4346102	1568143	754.160	99.978 #
14) L3 AR-1232-4	6.433	5.577	3398935	2795674	704.637	151.384 #
15) L3 AR-1232-5	0.000	6.165	0	1449102	N.D.	507.848 #
16) L4 AR-1242-1	0.000	4.610	0	2183563	N.D.	109.849 #
17) L4 AR-1242-2	6.068	5.223	4346102	3466851	119.709	96.635
18) L4 AR-1242-3	0.000	5.278	0	1568143	N.D.	133.195 #
19) L4 AR-1242-4	0.000	5.607	0	19840967	N.D.	1902.765 #
20) L4 AR-1242-5	6.433	6.042	3398935	2129451	74.803	89.714
21) L5 AR-1248-1	6.038	5.223	1210189	3466851	20.911	70.490 #
22) L5 AR-1248-2	0.000	5.769	0	2631495	N.D.	28.786 #
23) L5 AR-1248-3	0.000	5.829	0	2841283	N.D.	44.924 #
24) L5 AR-1248-4	0.000	6.042	0	2129451	N.D.	39.032 #
25) L5 AR-1248-5	6.890	0.000	65969368	0	1442.258	N.D. #
26) L6 AR-1254-1	6.890	5.888	65969368	18336072	397.848	152.501 #
27) L6 AR-1254-2	0.000	6.235	0	552500	N.D.	5.590 #
29) L6 AR-1254-4	0.000	6.845	0	2172170	N.D.	24.695 #
30) L6 AR-1254-5	0.000	6.961	0	443217	N.D.	2.552 #
32) L7 AR-1260-2	7.692	0.000	2044771	0	15.237	N.D. #
33) L7 AR-1260-3	0.000	6.768	0	301523	N.D.	2.499 #
34) L7 AR-1260-4	8.205	0.000	1608084	0	14.077	N.D. #
35) L7 AR-1260-5	0.000	7.502	0	2236049	N.D.	9.364 #
37) L8 AR-1262-2	0.000	7.055	0	767466	N.D.	15.211 #
38) L8 AR-1262-3	0.000	7.439	0	2760087	N.D.	50.528 #
39) L8 AR-1262-4	0.000	7.817	0	765723	N.D.	8.567 #
41) L9 AR-1268-1	0.000	7.055	0	767466	N.D.	15.231 #
42) L9 AR-1268-2	8.205	7.817	1608084	765723	23.613	2.885 #
43) L9 AR-1268-3	0.000	8.108	0	1699940	N.D.	7.781 #
44) L9 AR-1268-4	0.000	8.108	0	1699940	N.D.	29.591 #
45) L9 AR-1268-5	0.000	8.668	0	763793	N.D.	1.074 #

Data Path : Z:\pestpcbsrv\HPCHEM1\ECD_Q\Data\PQ100218\
 Data File : PQ032518.D
 Signal(s) : Signal #1: ECD1A.ch Signal #2: ECD2B.ch
 Acq On : 02 Oct 2018 19:22
 Operator : SM\SJ
 Sample : J5187-02
 Misc :
 ALS Vial : 13 Sample Multiplier: 1

Instrument :
 ECD_Q
 ClientSampleId :

Integration File signal 1: autoint1.e
 Integration File signal 2: autoint2.e
 Quant Time: Oct 03 01:56:37 2018
 Quant Method : Z:\pestpcbsrv\HPCHEM1\ECD_Q\Method\PQ091818.M
 Quant Title : GC EXTRACTABLES
 QLast Update : Wed Sep 19 02:07:33 2018
 Response via : Initial Calibration
 Integrator: ChemStation

Volume Inj. : 2 µl
 Signal #1 Phase : ZB-MR1 Signal #2 Phase: ZB-MR2
 Signal #1 Info : 30Mx0.32mmx 0.50µ Signal #2 Info : 30M x 0.32mm x 0.25µm

Compound	RT#1	RT#2	Resp#1	Resp#2	ng/ml	ng/ml

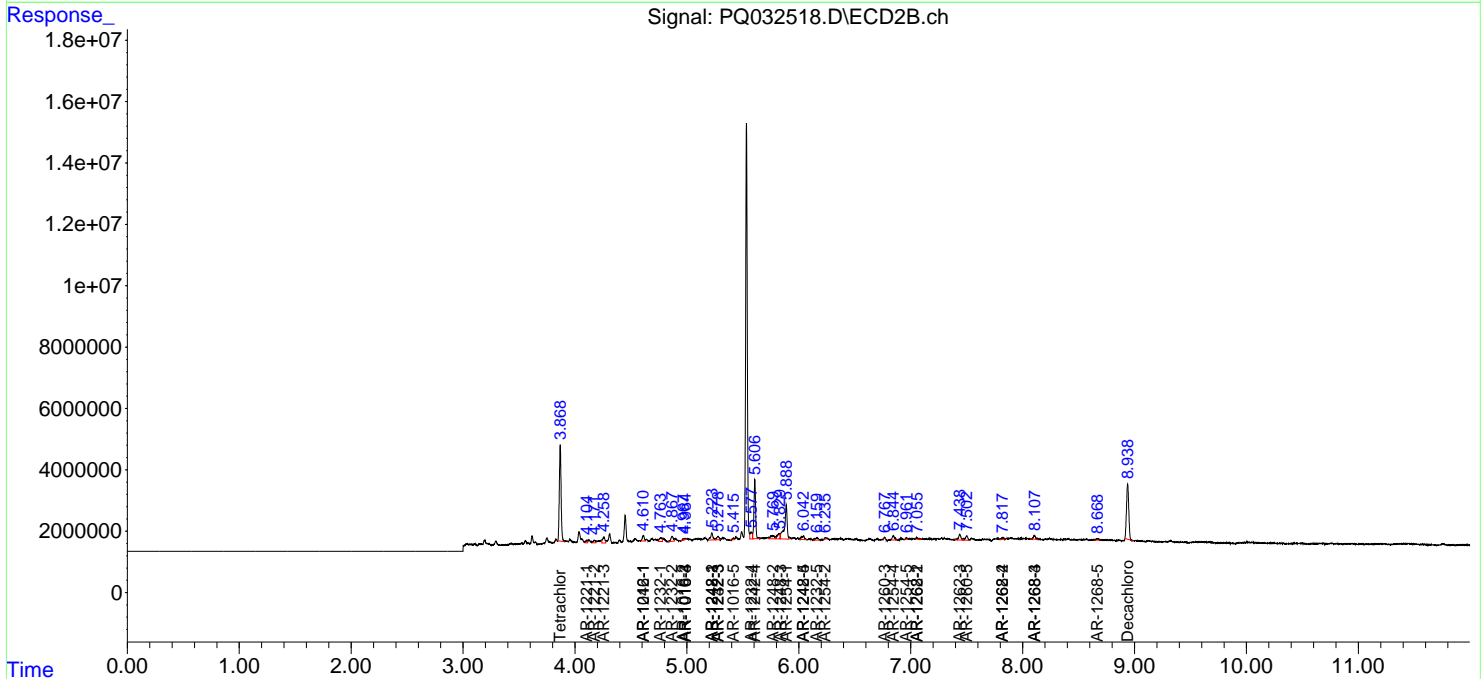
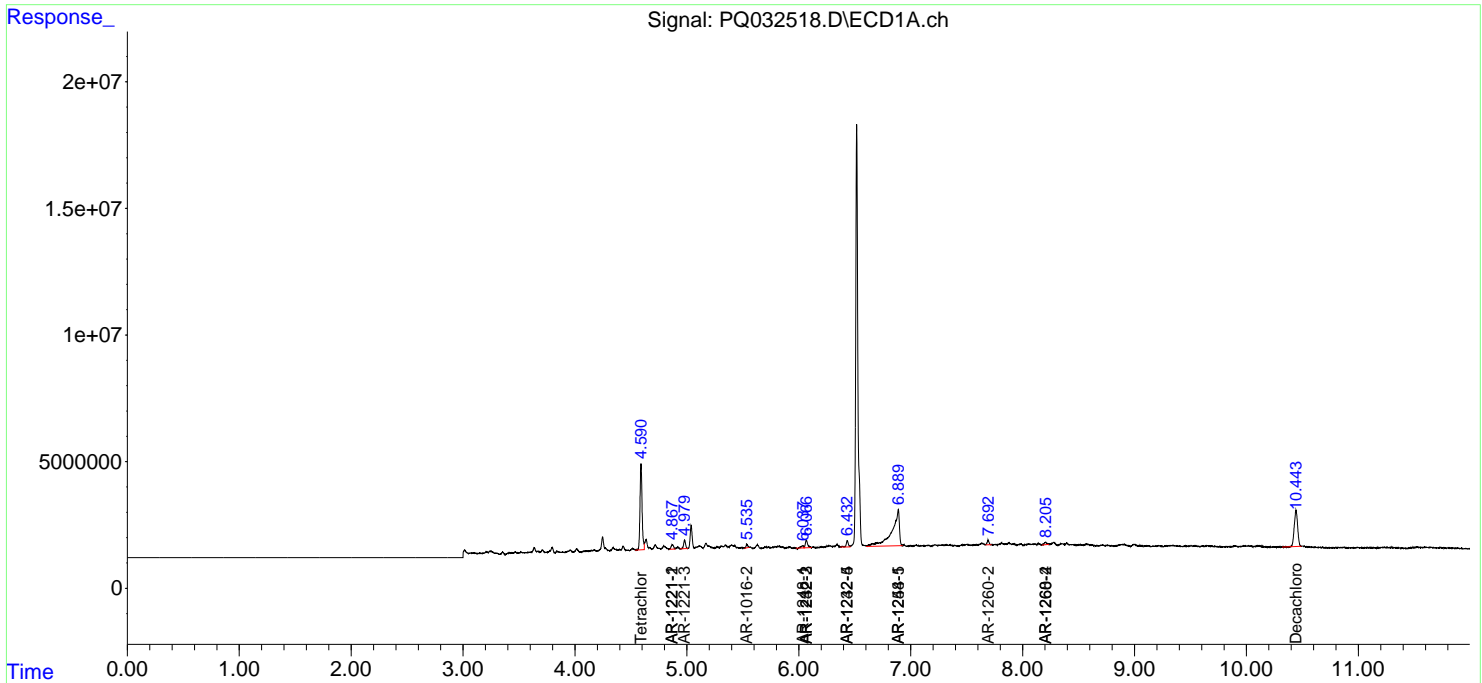
(f)=RT Delta > 1/2 Window (#)=Amounts differ by > 25% (m)=manual int.

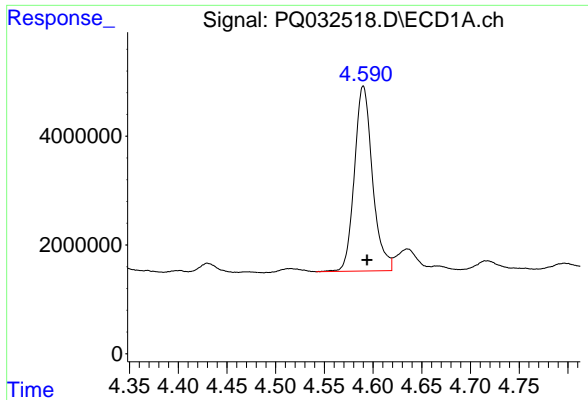
Data Path : Z:\pestpcbsrv\HPCHEM1\ECD_Q\Data\PQ100218\
 Data File : PQ032518.D
 Signal(s) : Signal #1: ECD1A.ch Signal #2: ECD2B.ch
 Acq On : 02 Oct 2018 19:22
 Operator : SM\SJ
 Sample : J5187-02
 Misc :
 ALS Vial : 13 Sample Multiplier: 1

Instrument :
 ECD_Q
 ClientSampled :

Integration File signal 1: autoint1.e
 Integration File signal 2: autoint2.e
 Quant Time: Oct 03 01:56:37 2018
 Quant Method : Z:\pestpcbsrv\HPCHEM1\ECD_Q\Method\PQ091818.M
 Quant Title : GC EXTRACTABLES
 QLast Update : Wed Sep 19 02:07:33 2018
 Response via : Initial Calibration
 Integrator: ChemStation

Volume Inj. : 2 µl
 Signal #1 Phase : ZB-MR1 Signal #2 Phase: ZB-MR2
 Signal #1 Info : 30Mx0.32mmx 0.50µ Signal #2 Info : 30M x 0.32mm x 0.25µm

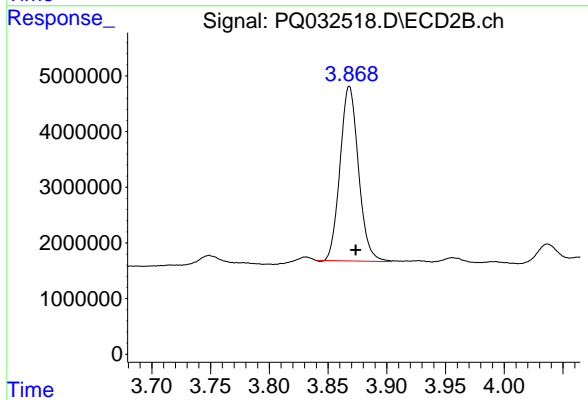




#1 Tetrachloro-m-xylene

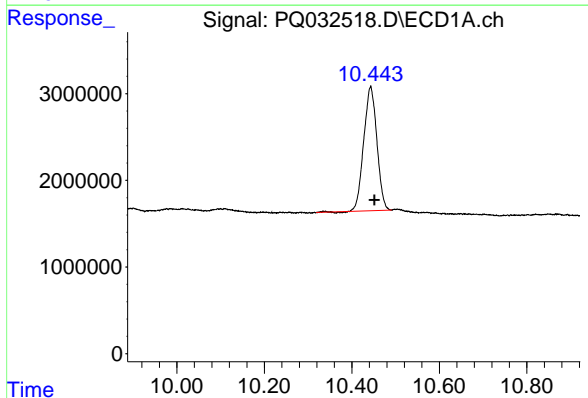
R.T.: 4.590 min
 Delta R.T.: -0.004 min
 Response: 43838688
 Conc: 18.91 ng/ml

Instrument :
 ECD_Q
 ClientSampleId :



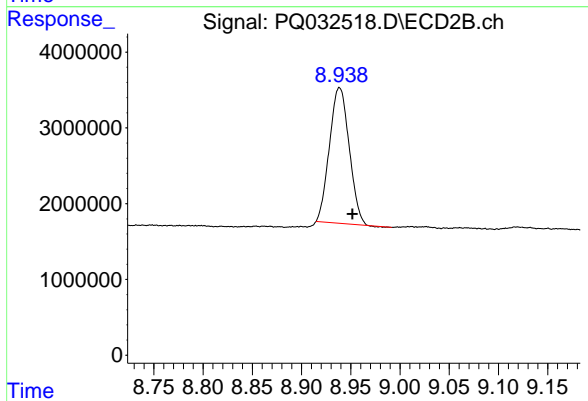
#1 Tetrachloro-m-xylene

R.T.: 3.868 min
 Delta R.T.: -0.005 min
 Response: 34210438
 Conc: 17.08 ng/ml



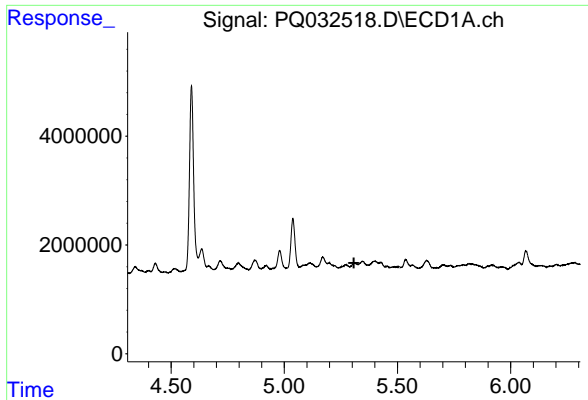
#2 Decachlorobiphenyl

R.T.: 10.443 min
 Delta R.T.: -0.008 min
 Response: 29909109
 Conc: 14.35 ng/ml



#2 Decachlorobiphenyl

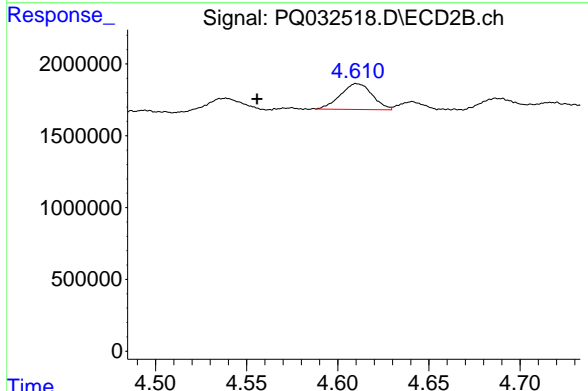
R.T.: 8.939 min
 Delta R.T.: -0.013 min
 Response: 24966379
 Conc: 12.89 ng/ml



#3 AR-1016-1

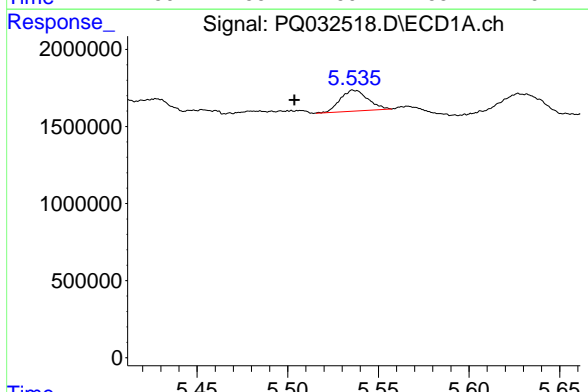
R.T.: 0.000 min
 Exp R.T.: 5.307 min
 Response: 0
 Conc: N.D.

Instrument :
 ECD_Q
 ClientSampled :



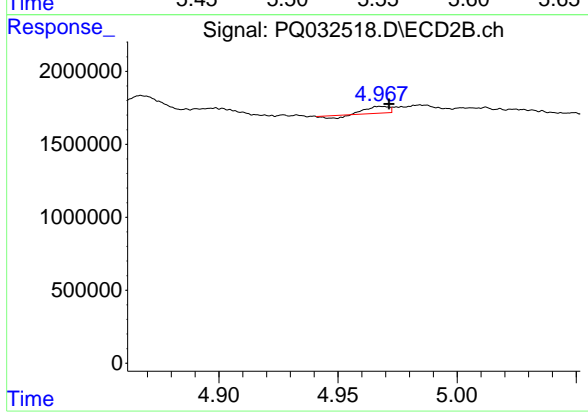
#3 AR-1016-1

R.T.: 4.610 min
 Delta R.T.: 0.055 min
 Response: 2183563
 Conc: 45.26 ng/ml



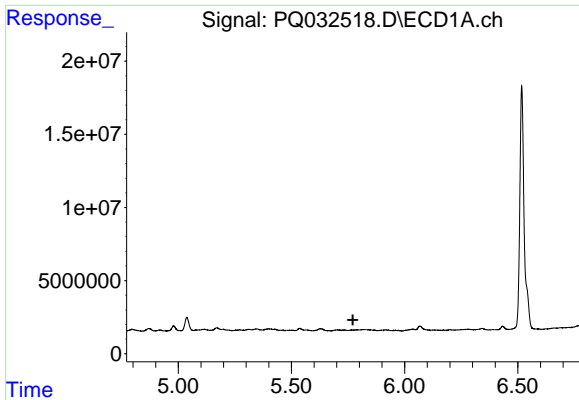
#4 AR-1016-2

R.T.: 5.537 min
 Delta R.T.: 0.033 min
 Response: 1443721
 Conc: 27.53 ng/ml



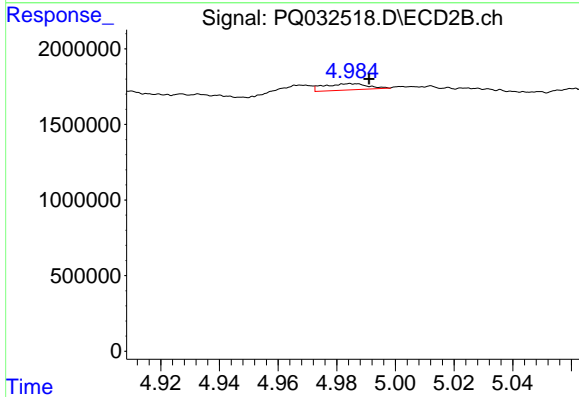
#4 AR-1016-2

R.T.: 4.968 min
 Delta R.T.: -0.003 min
 Response: 227456
 Conc: 3.37 ng/ml

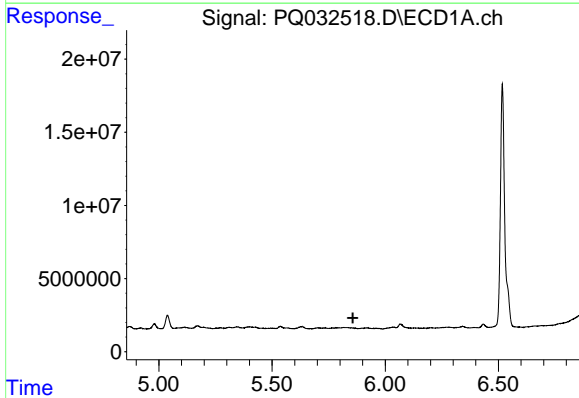


#5 AR-1016-3
 R.T.: 0.000 min
 Exp R.T. : 5.772 min
 Response: 0
 Conc: N.D.

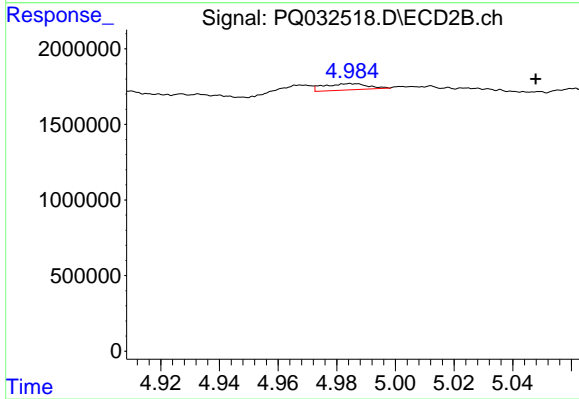
Instrument :
 ECD_Q
 ClientSampled :



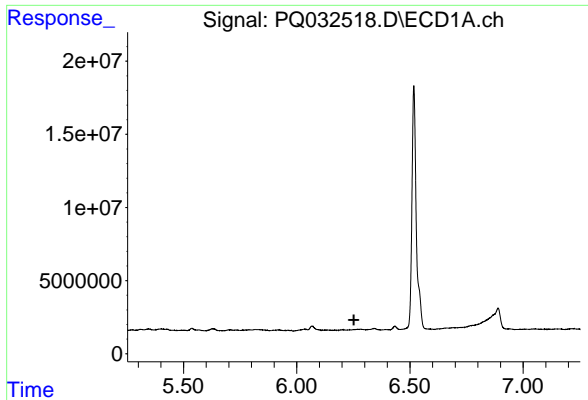
#5 AR-1016-3
 R.T.: 4.985 min
 Delta R.T.: -0.006 min
 Response: 433343
 Conc: 4.64 ng/ml



#6 AR-1016-4
 R.T.: 0.000 min
 Exp R.T. : 5.857 min
 Response: 0
 Conc: N.D.

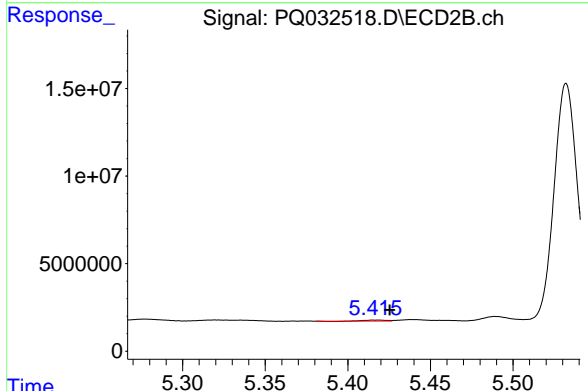


#6 AR-1016-4
 R.T.: 4.985 min
 Delta R.T.: -0.063 min
 Response: 433343
 Conc: 7.30 ng/ml

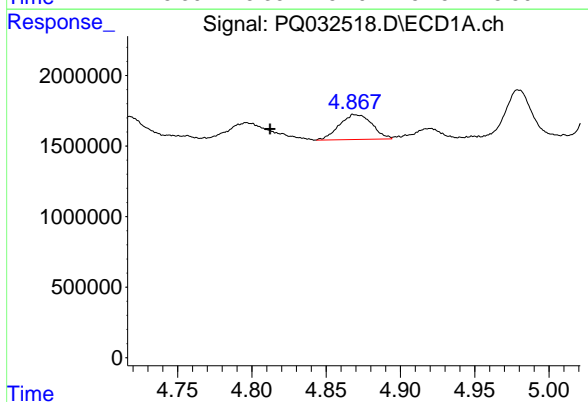


#7 AR-1016-5
 R.T.: 0.000 min
 Exp R.T.: 6.252 min
 Response: 0
 Conc: N.D.

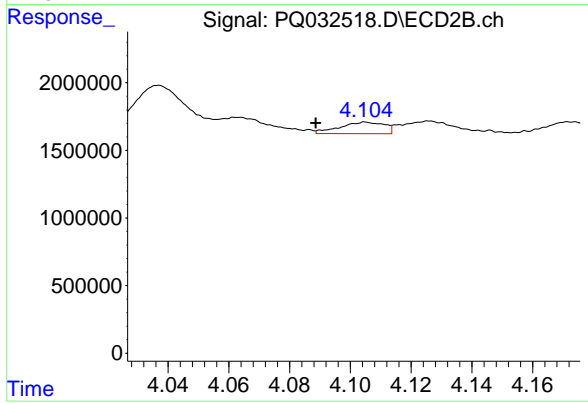
Instrument :
 ECD_Q
 ClientSampled :



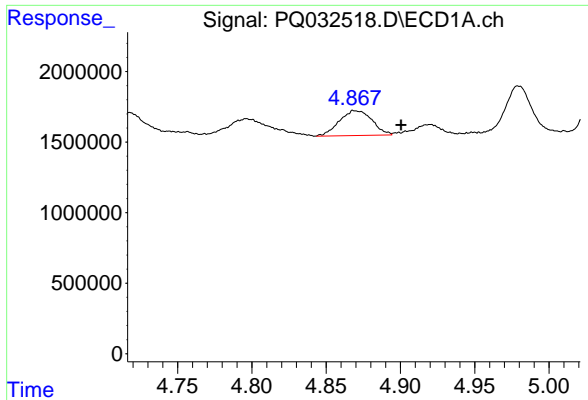
#7 AR-1016-5
 R.T.: 5.419 min
 Delta R.T.: -0.006 min
 Response: 411217
 Conc: 7.87 ng/ml



#8 AR-1221-1
 R.T.: 4.869 min
 Delta R.T.: 0.057 min
 Response: 2706809
 Conc: 114.80 ng/ml

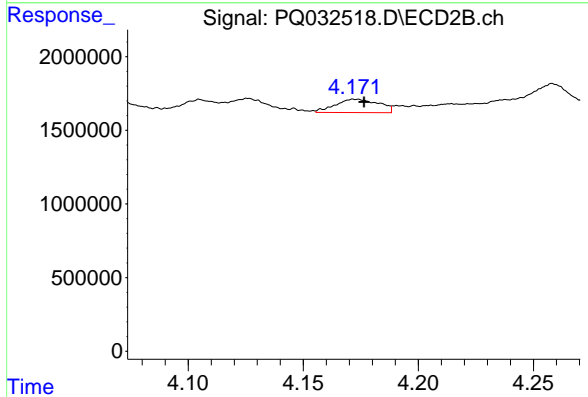


#8 AR-1221-1
 R.T.: 4.105 min
 Delta R.T.: 0.016 min
 Response: 874779
 Conc: 43.15 ng/ml

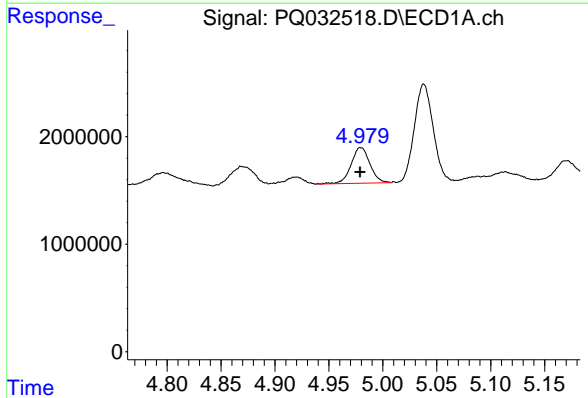


#9 AR-1221-2
R.T.: 4.869 min
Delta R.T.: -0.031 min
Response: 2706809
Conc: 154.21 ng/ml

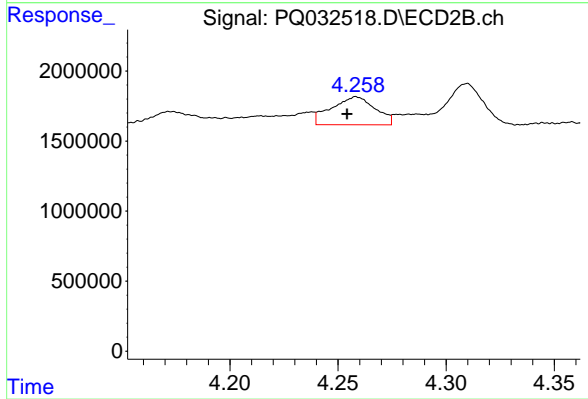
Instrument :
ECD_Q
ClientSampleId :



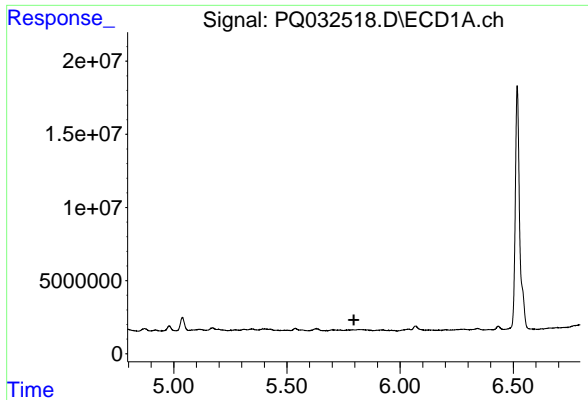
#9 AR-1221-2
R.T.: 4.172 min
Delta R.T.: -0.005 min
Response: 1195000
Conc: 76.49 ng/ml



#10 AR-1221-3
R.T.: 4.980 min
Delta R.T.: 0.000 min
Response: 4052186
Conc: 73.16 ng/ml



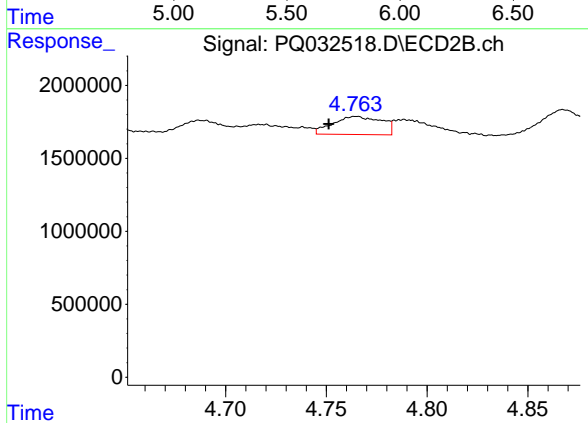
#10 AR-1221-3
R.T.: 4.258 min
Delta R.T.: 0.004 min
Response: 2804858
Conc: 57.27 ng/ml



#11 AR-1232-1

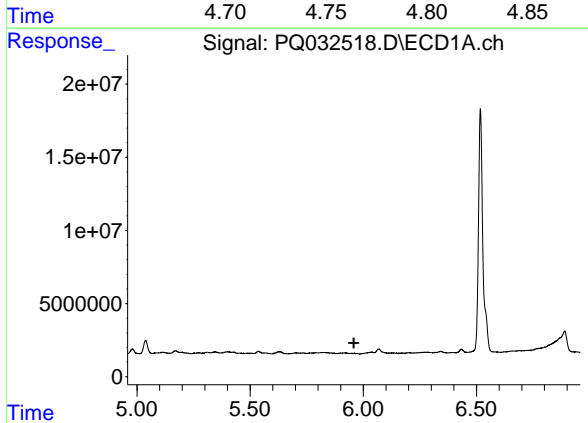
R.T.: 0.000 min
 Exp R.T. : 5.796 min
 Response: 0
 Conc: N.D.

Instrument :
 ECD_Q
 ClientSampled :



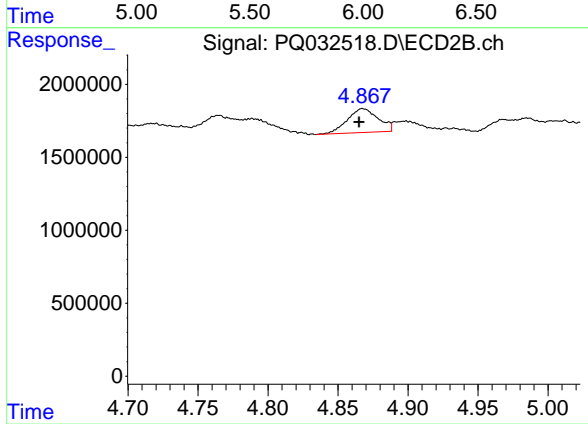
#11 AR-1232-1

R.T.: 4.766 min
 Delta R.T.: 0.014 min
 Response: 2087257
 Conc: 119.75 ng/ml



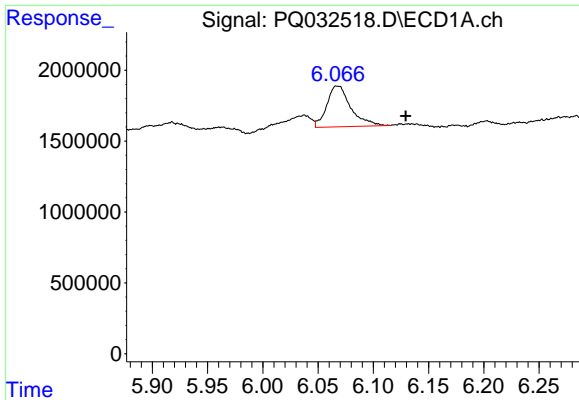
#12 AR-1232-2

R.T.: 0.000 min
 Exp R.T. : 5.959 min
 Response: 0
 Conc: N.D.



#12 AR-1232-2

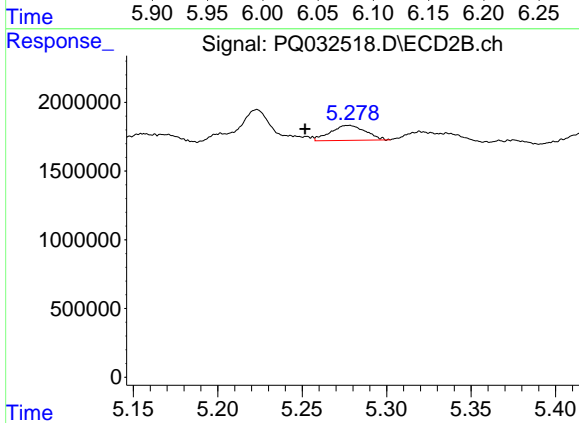
R.T.: 4.867 min
 Delta R.T.: 0.002 min
 Response: 2525349
 Conc: 500.50 ng/ml



#13 AR-1232-3

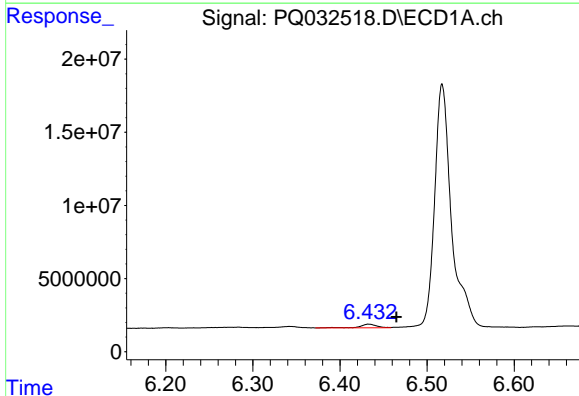
R.T.: 6.068 min
 Delta R.T.: -0.062 min
 Response: 4346102
 Conc: 754.16 ng/ml

Instrument :
 ECD_Q
 ClientSampleId :



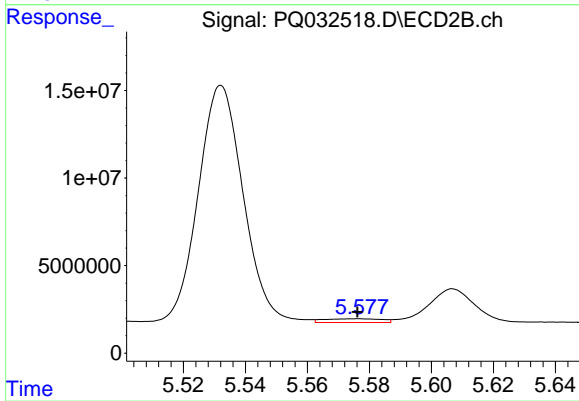
#13 AR-1232-3

R.T.: 5.278 min
 Delta R.T.: 0.026 min
 Response: 1568143
 Conc: 99.98 ng/ml



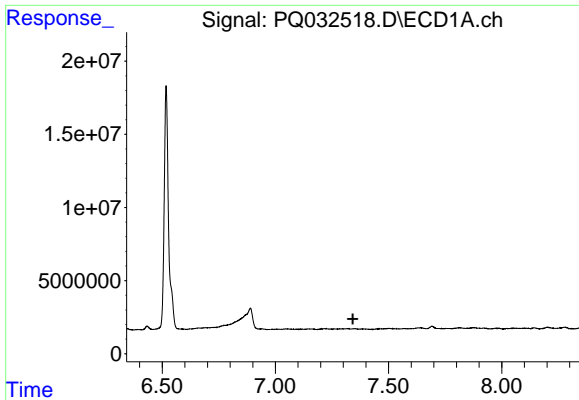
#14 AR-1232-4

R.T.: 6.433 min
 Delta R.T.: -0.032 min
 Response: 3398935
 Conc: 704.64 ng/ml



#14 AR-1232-4

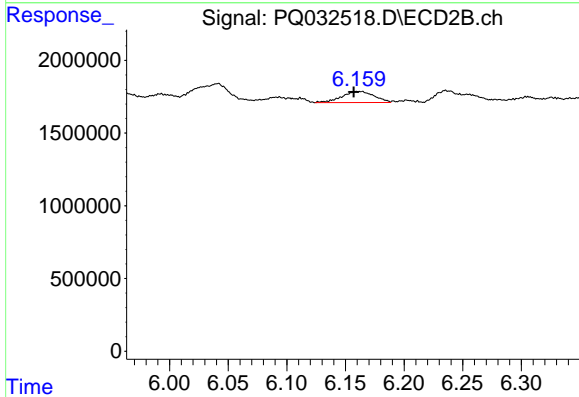
R.T.: 5.577 min
 Delta R.T.: 0.000 min
 Response: 2795674
 Conc: 151.38 ng/ml



#15 AR-1232-5

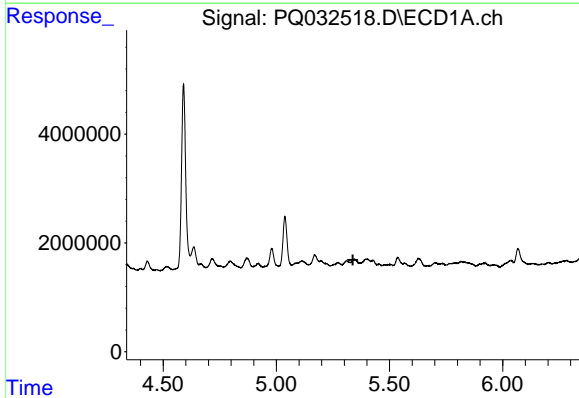
R.T.: 0.000 min
 Exp R.T. : 7.343 min
 Response: 0
 Conc: N.D.

Instrument :
 ECD_Q
 ClientSampleId :



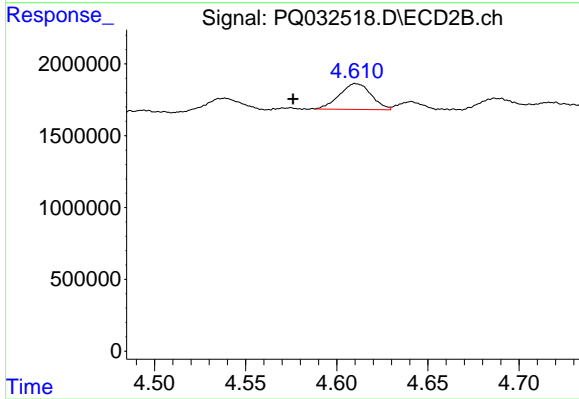
#15 AR-1232-5

R.T.: 6.165 min
 Delta R.T.: 0.008 min
 Response: 1449102
 Conc: 507.85 ng/ml



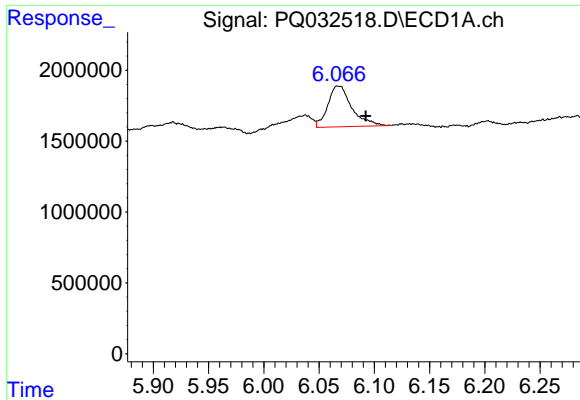
#16 AR-1242-1

R.T.: 0.000 min
 Exp R.T. : 5.338 min
 Response: 0
 Conc: N.D.



#16 AR-1242-1

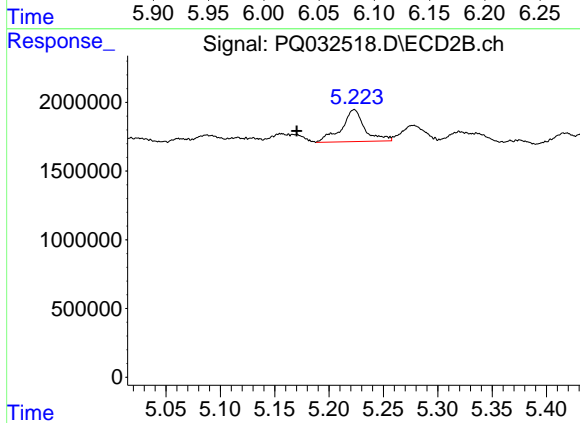
R.T.: 4.610 min
 Delta R.T.: 0.034 min
 Response: 2183563
 Conc: 109.85 ng/ml



#17 AR-1242-2

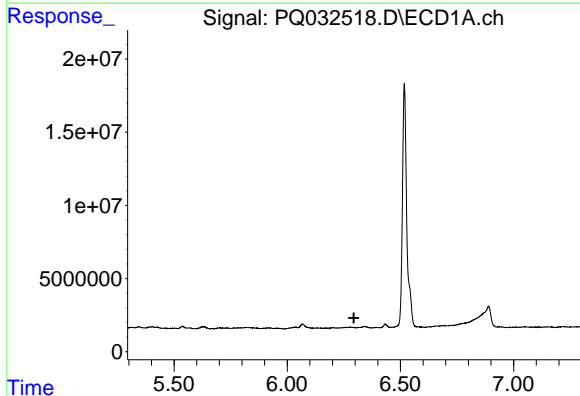
R.T.: 6.068 min
 Delta R.T.: -0.025 min
 Response: 4346102
 Conc: 119.71 ng/ml

Instrument :
 ECD_Q
 ClientSampled :



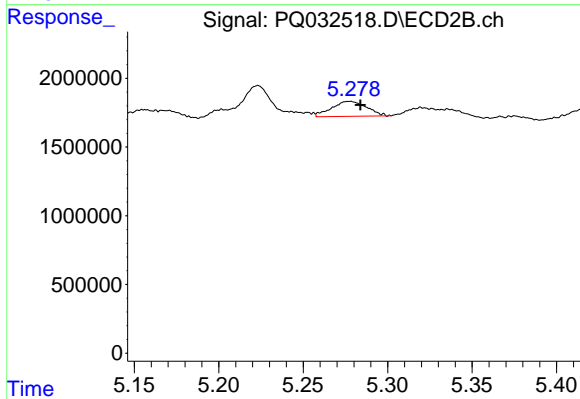
#17 AR-1242-2

R.T.: 5.223 min
 Delta R.T.: 0.053 min
 Response: 3466851
 Conc: 96.64 ng/ml



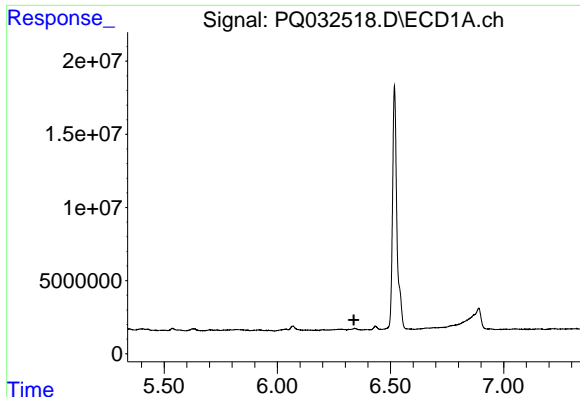
#18 AR-1242-3

R.T.: 0.000 min
 Exp R.T. : 6.294 min
 Response: 0
 Conc: N.D.



#18 AR-1242-3

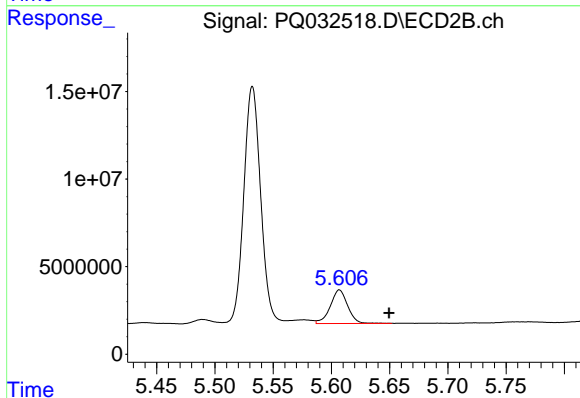
R.T.: 5.278 min
 Delta R.T.: -0.006 min
 Response: 1568143
 Conc: 133.19 ng/ml



#19 AR-1242-4

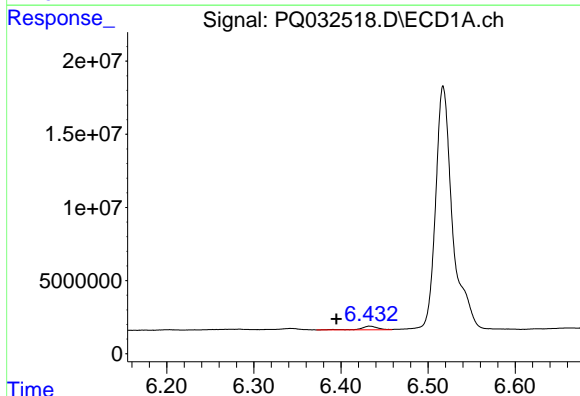
R.T.: 0.000 min
 Exp R.T.: 6.338 min
 Response: 0
 Conc: N.D.

Instrument :
 ECD_Q
 ClientSampled :



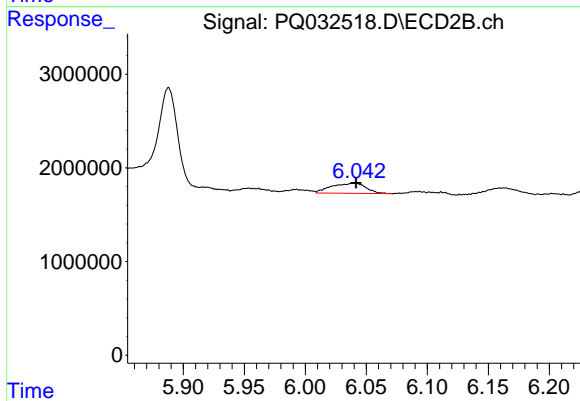
#19 AR-1242-4

R.T.: 5.607 min
 Delta R.T.: -0.043 min
 Response: 19840967
 Conc: 1902.76 ng/ml



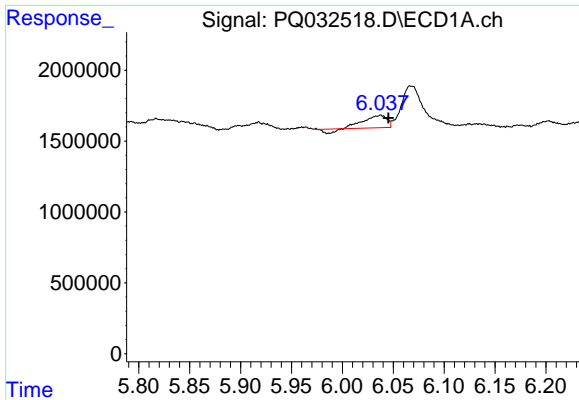
#20 AR-1242-5

R.T.: 6.433 min
 Delta R.T.: 0.038 min
 Response: 3398935
 Conc: 74.80 ng/ml



#20 AR-1242-5

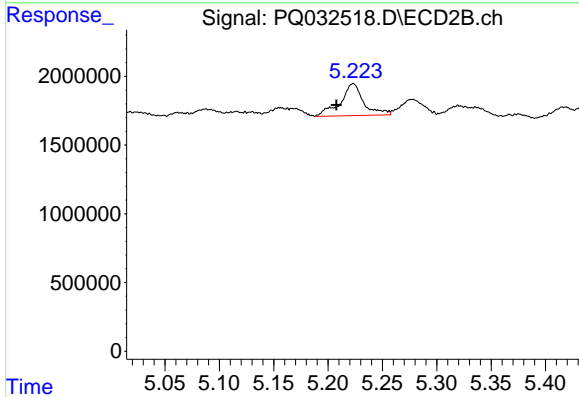
R.T.: 6.042 min
 Delta R.T.: 0.000 min
 Response: 2129451
 Conc: 89.71 ng/ml



#21 AR-1248-1

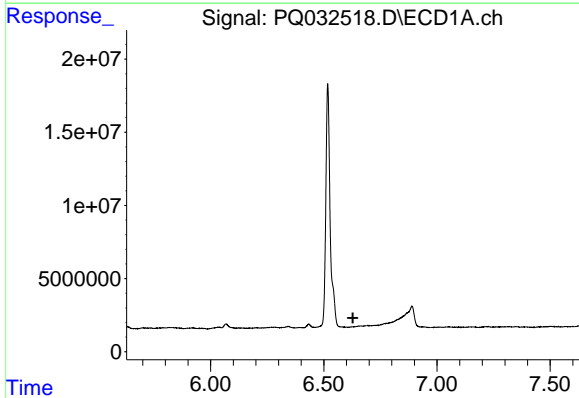
R.T.: 6.038 min
 Delta R.T.: -0.008 min
 Response: 1210189
 Conc: 20.91 ng/ml

Instrument :
 ECD_Q
 ClientSampleId :



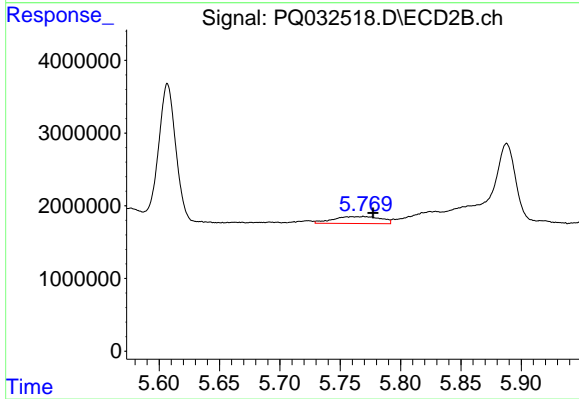
#21 AR-1248-1

R.T.: 5.223 min
 Delta R.T.: 0.016 min
 Response: 3466851
 Conc: 70.49 ng/ml



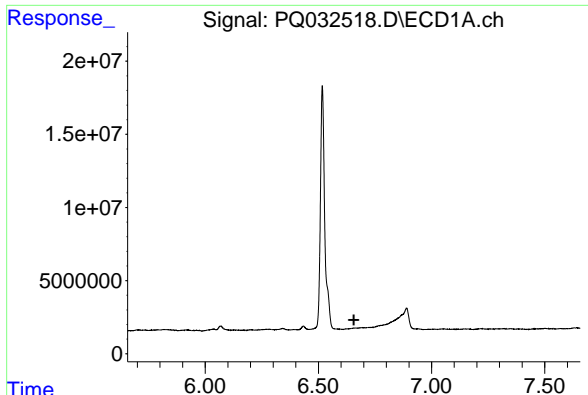
#22 AR-1248-2

R.T.: 0.000 min
 Exp R.T. : 6.629 min
 Response: 0
 Conc: N.D.



#22 AR-1248-2

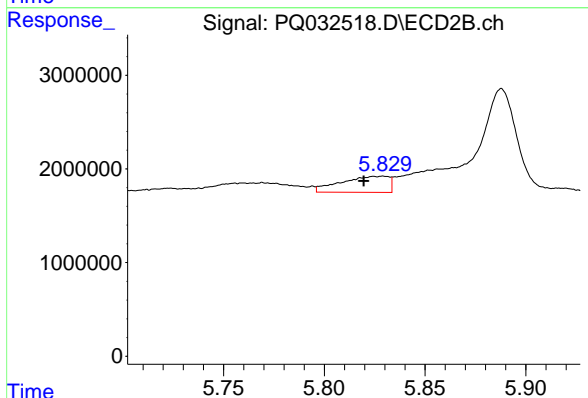
R.T.: 5.769 min
 Delta R.T.: -0.008 min
 Response: 2631495
 Conc: 28.79 ng/ml



#23 AR-1248-3

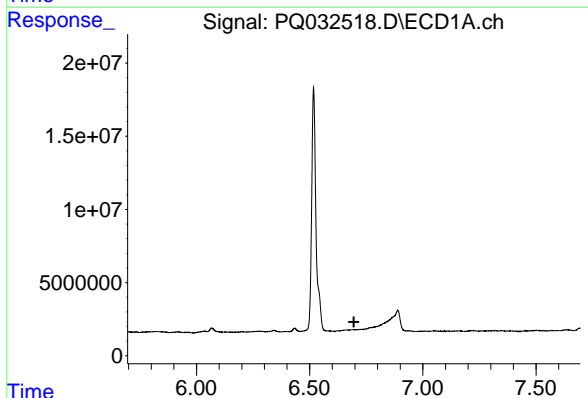
R.T.: 0.000 min
 Exp R.T. : 6.657 min
 Response: 0
 Conc: N.D.

Instrument :
 ECD_Q
 ClientSampleId :



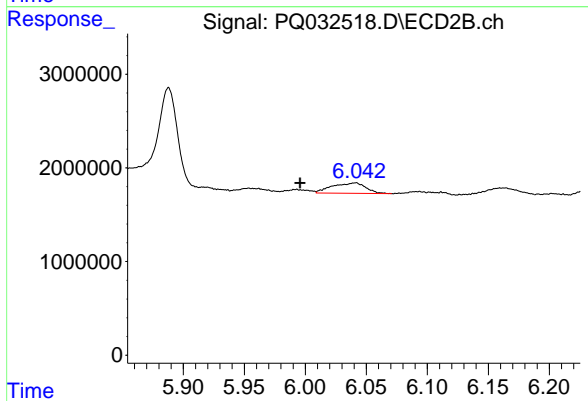
#23 AR-1248-3

R.T.: 5.829 min
 Delta R.T.: 0.010 min
 Response: 2841283
 Conc: 44.92 ng/ml



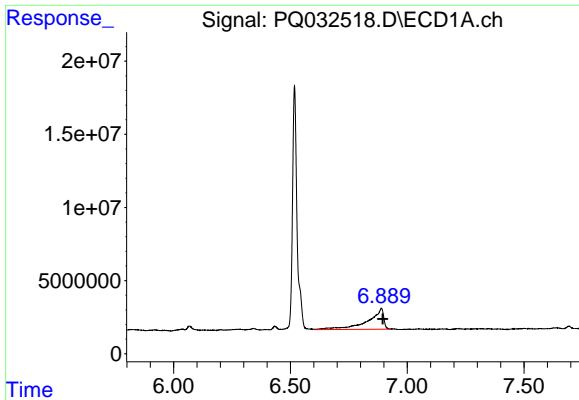
#24 AR-1248-4

R.T.: 0.000 min
 Exp R.T. : 6.696 min
 Response: 0
 Conc: N.D.



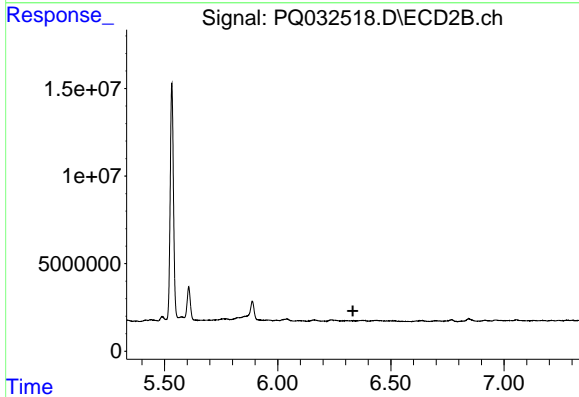
#24 AR-1248-4

R.T.: 6.042 min
 Delta R.T.: 0.046 min
 Response: 2129451
 Conc: 39.03 ng/ml

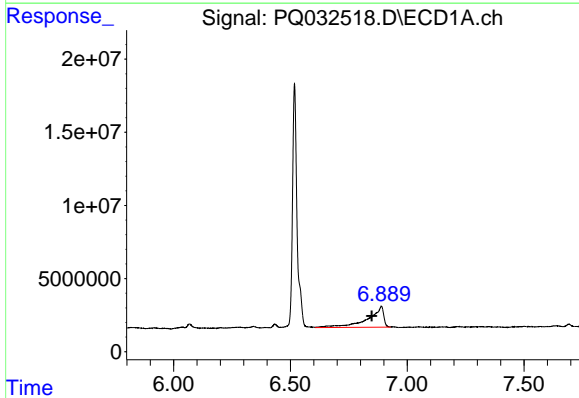


#25 AR-1248-5
 R.T.: 6.890 min
 Delta R.T.: -0.006 min
 Response: 65969368
 Conc: 1442.26 ng/ml

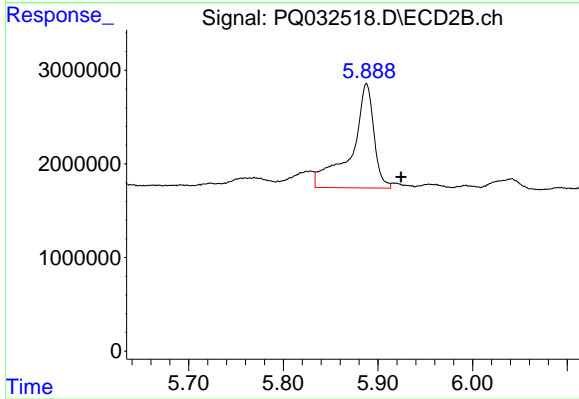
Instrument :
 ECD_Q
 ClientSampleId :



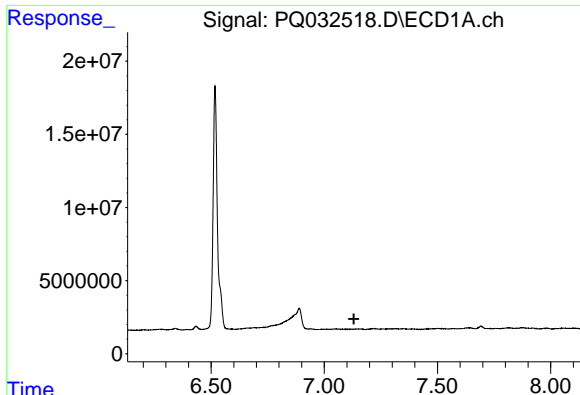
#25 AR-1248-5
 R.T.: 0.000 min
 Exp R.T. : 6.332 min
 Response: 0
 Conc: N.D.



#26 AR-1254-1
 R.T.: 6.890 min
 Delta R.T.: 0.042 min
 Response: 65969368
 Conc: 397.85 ng/ml



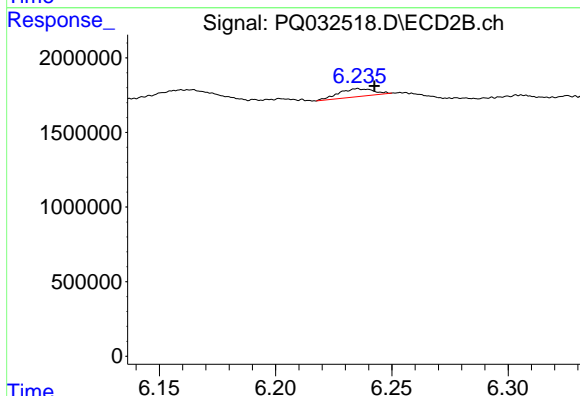
#26 AR-1254-1
 R.T.: 5.888 min
 Delta R.T.: -0.036 min
 Response: 18336072
 Conc: 152.50 ng/ml



#27 AR-1254-2

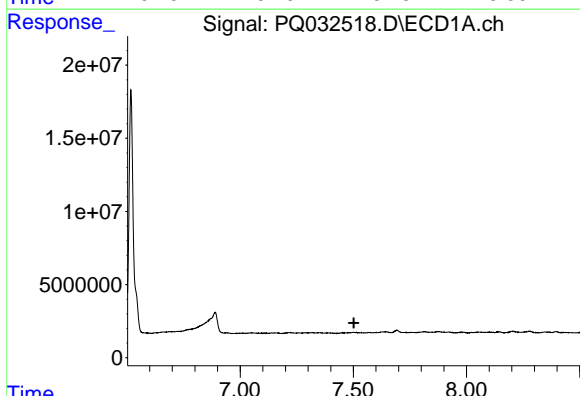
R.T.: 0.000 min
 Exp R.T. : 7.131 min
 Response: 0
 Conc: N.D.

Instrument :
 ECD_Q
 ClientSampled :



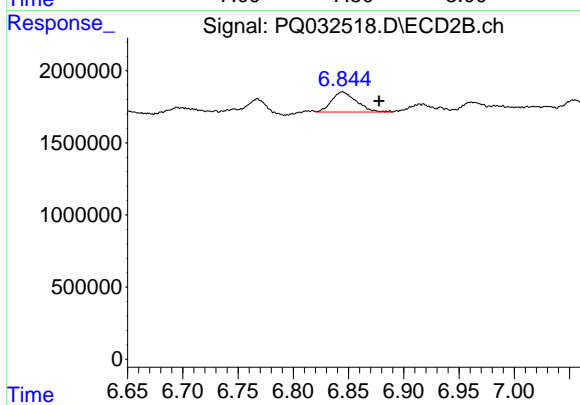
#27 AR-1254-2

R.T.: 6.235 min
 Delta R.T.: -0.007 min
 Response: 552500
 Conc: 5.59 ng/ml



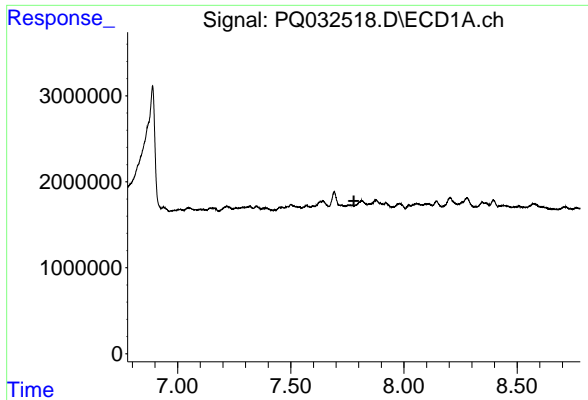
#29 AR-1254-4

R.T.: 0.000 min
 Exp R.T. : 7.503 min
 Response: 0
 Conc: N.D.



#29 AR-1254-4

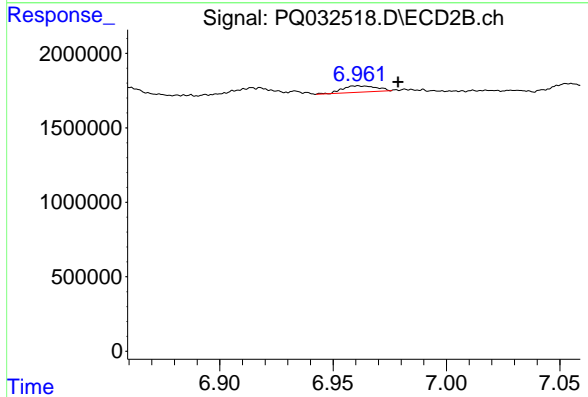
R.T.: 6.845 min
 Delta R.T.: -0.033 min
 Response: 2172170
 Conc: 24.69 ng/ml



#30 AR-1254-5

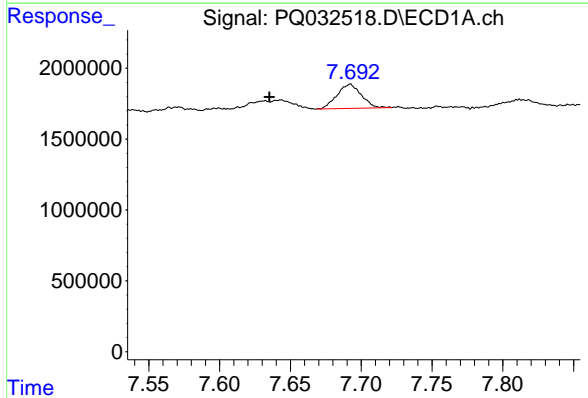
R.T.: 0.000 min
 Exp R.T.: 7.779 min
 Response: 0
 Conc: N.D.

Instrument :
 ECD_Q
 ClientSampleId :



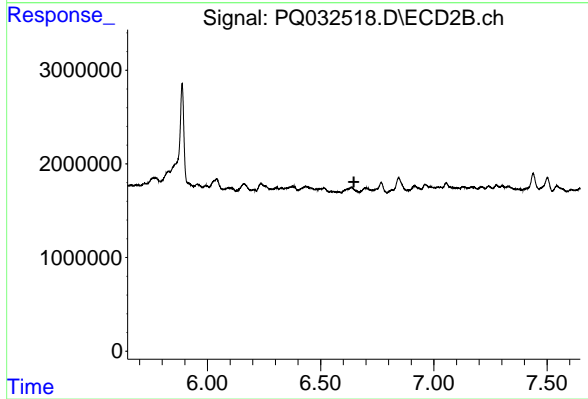
#30 AR-1254-5

R.T.: 6.961 min
 Delta R.T.: -0.018 min
 Response: 443217
 Conc: 2.55 ng/ml



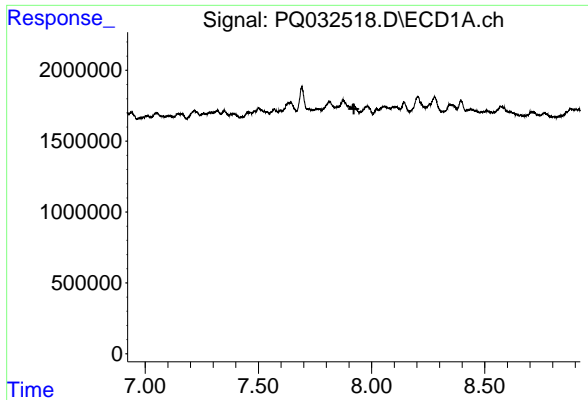
#32 AR-1260-2

R.T.: 7.692 min
 Delta R.T.: 0.057 min
 Response: 2044771
 Conc: 15.24 ng/ml



#32 AR-1260-2

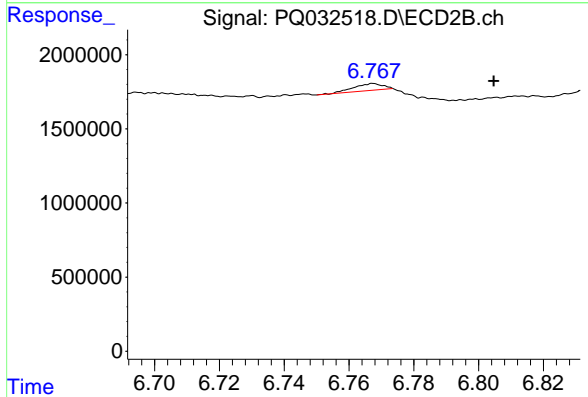
R.T.: 0.000 min
 Exp R.T.: 6.647 min
 Response: 0
 Conc: N.D.



#33 AR-1260-3

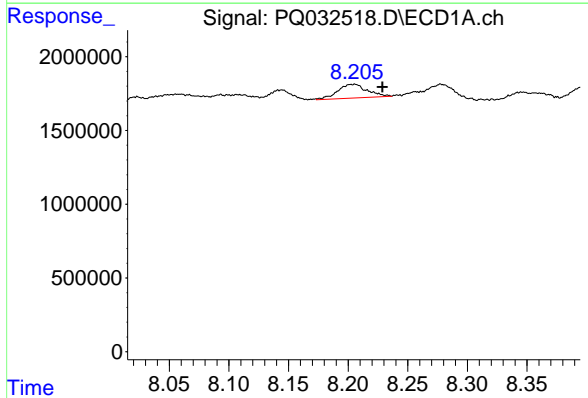
R.T.: 0.000 min
 Exp R.T.: 7.922 min
 Response: 0
 Conc: N.D.

Instrument :
 ECD_Q
 ClientSampleId :



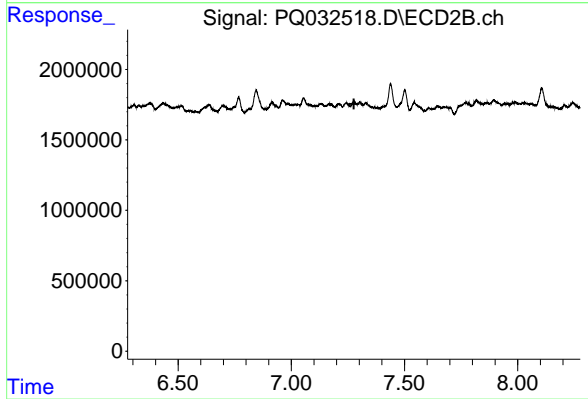
#33 AR-1260-3

R.T.: 6.768 min
 Delta R.T.: -0.037 min
 Response: 301523
 Conc: 2.50 ng/ml



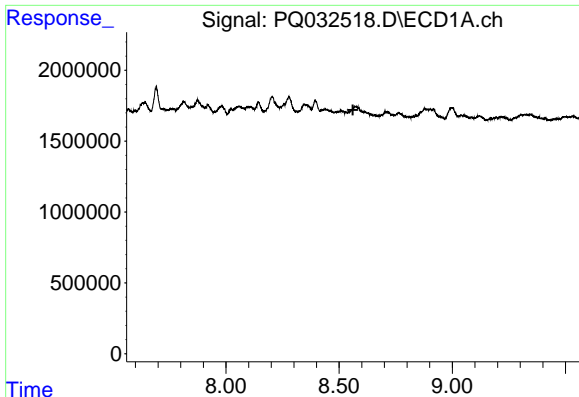
#34 AR-1260-4

R.T.: 8.205 min
 Delta R.T.: -0.023 min
 Response: 1608084
 Conc: 14.08 ng/ml



#34 AR-1260-4

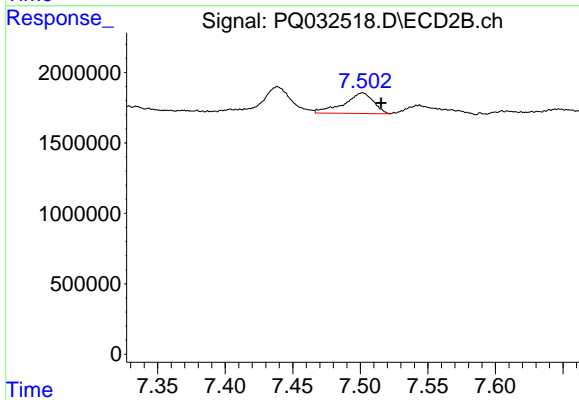
R.T.: 0.000 min
 Exp R.T.: 7.276 min
 Response: 0
 Conc: N.D.



#35 AR-1260-5

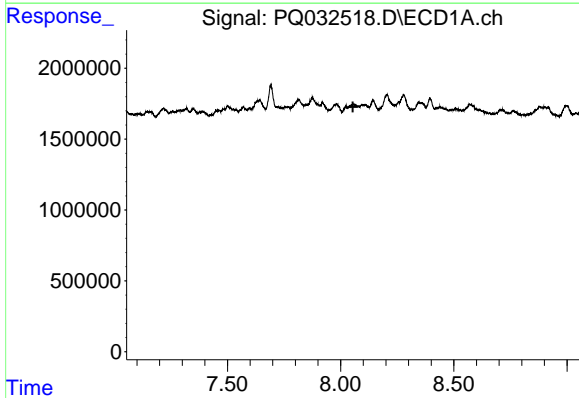
R.T.: 0.000 min
 Exp R.T. : 8.561 min
 Response: 0
 Conc: N.D.

Instrument :
 ECD_Q
 ClientSampled :



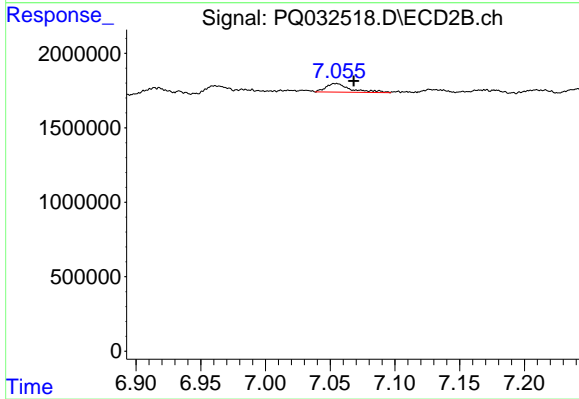
#35 AR-1260-5

R.T.: 7.502 min
 Delta R.T.: -0.014 min
 Response: 2236049
 Conc: 9.36 ng/ml



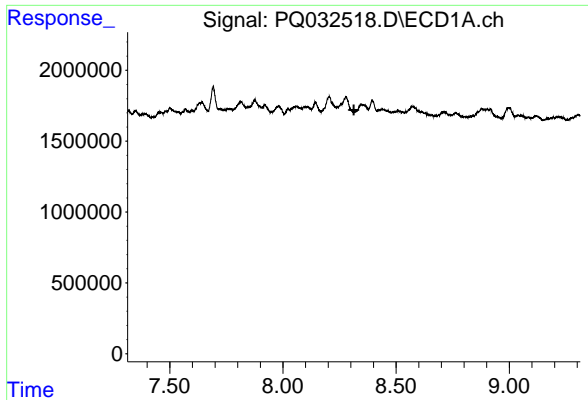
#37 AR-1262-2

R.T.: 0.000 min
 Exp R.T. : 8.054 min
 Response: 0
 Conc: N.D.



#37 AR-1262-2

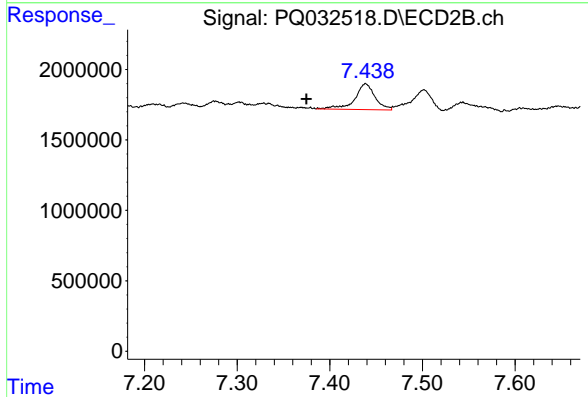
R.T.: 7.055 min
 Delta R.T.: -0.013 min
 Response: 767466
 Conc: 15.21 ng/ml



#38 AR-1262-3

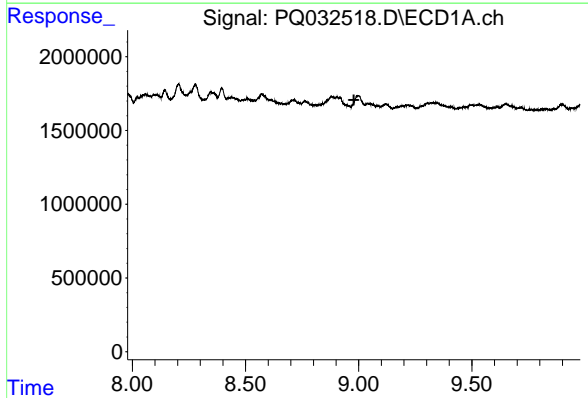
R.T.: 0.000 min
 Exp R.T. : 8.313 min
 Response: 0
 Conc: N.D.

Instrument :
 ECD_Q
 ClientSampleId :



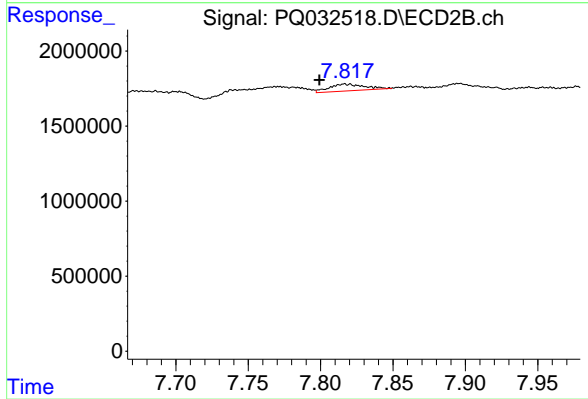
#38 AR-1262-3

R.T.: 7.439 min
 Delta R.T.: 0.064 min
 Response: 2760087
 Conc: 50.53 ng/ml



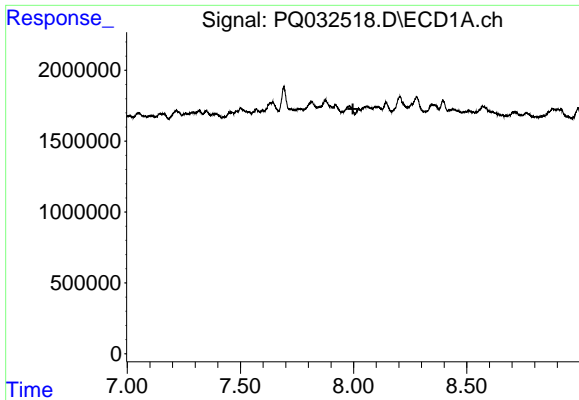
#39 AR-1262-4

R.T.: 0.000 min
 Exp R.T. : 8.979 min
 Response: 0
 Conc: N.D.



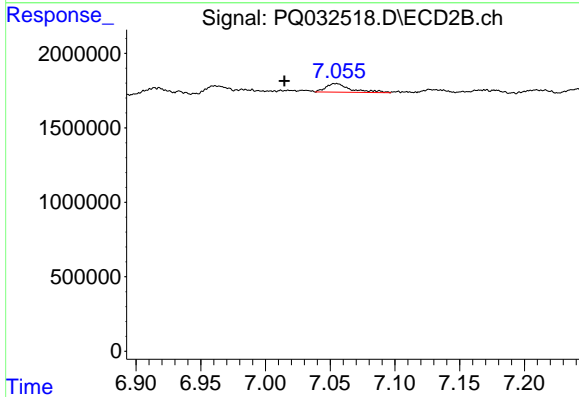
#39 AR-1262-4

R.T.: 7.817 min
 Delta R.T.: 0.017 min
 Response: 765723
 Conc: 8.57 ng/ml

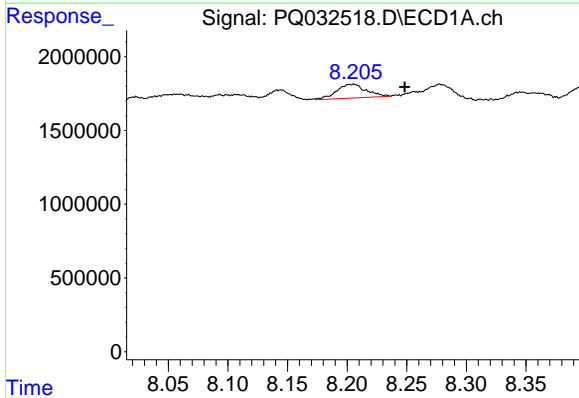


#41 AR-1268-1
 R.T.: 0.000 min
 Exp R.T.: 7.997 min
 Response: 0
 Conc: N.D.

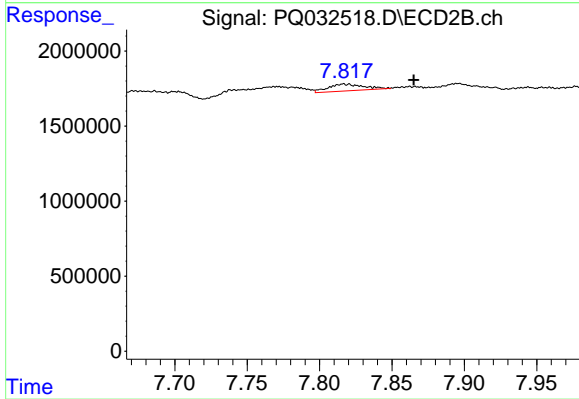
Instrument :
 ECD_Q
 ClientSampled :



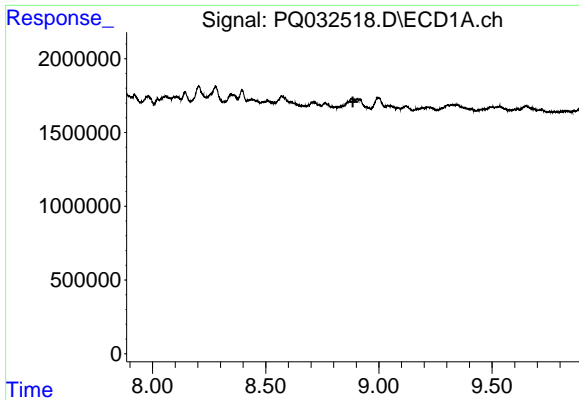
#41 AR-1268-1
 R.T.: 7.055 min
 Delta R.T.: 0.040 min
 Response: 767466
 Conc: 15.23 ng/ml



#42 AR-1268-2
 R.T.: 8.205 min
 Delta R.T.: -0.043 min
 Response: 1608084
 Conc: 23.61 ng/ml



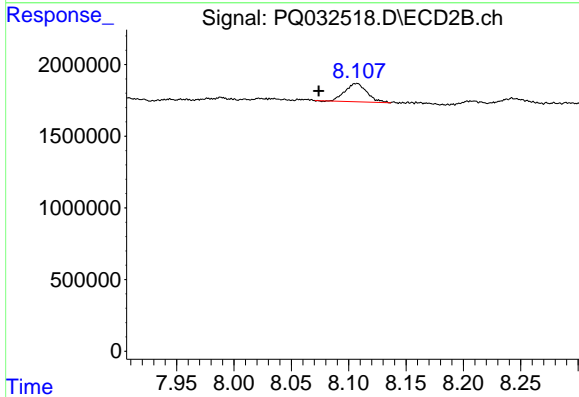
#42 AR-1268-2
 R.T.: 7.817 min
 Delta R.T.: -0.049 min
 Response: 765723
 Conc: 2.88 ng/ml



#43 AR-1268-3

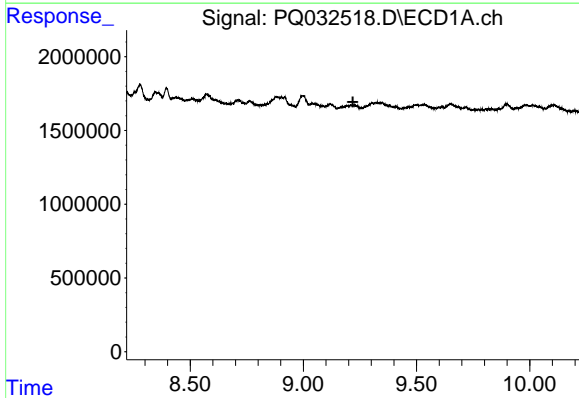
R.T.: 0.000 min
 Exp R.T.: 8.885 min
 Response: 0
 Conc: N.D.

Instrument :
 ECD_Q
 ClientSampled :



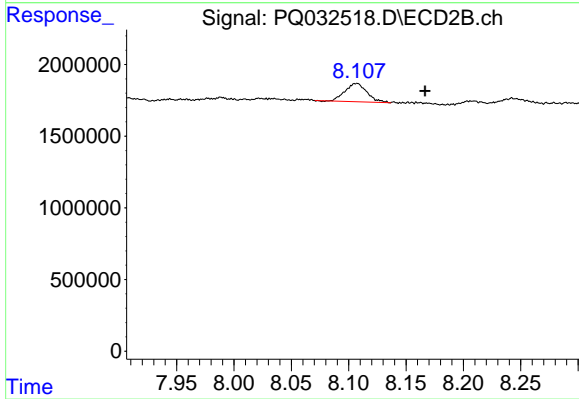
#43 AR-1268-3

R.T.: 8.108 min
 Delta R.T.: 0.034 min
 Response: 1699940
 Conc: 7.78 ng/ml



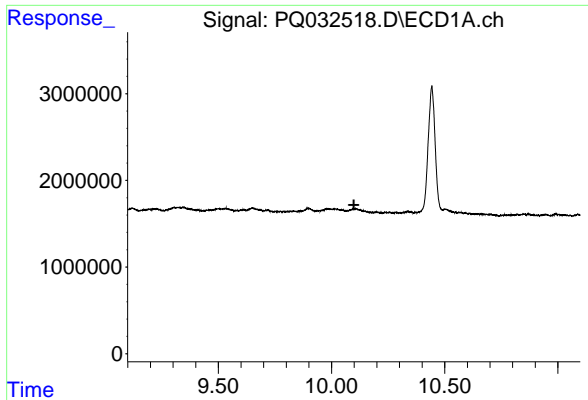
#44 AR-1268-4

R.T.: 0.000 min
 Exp R.T.: 9.219 min
 Response: 0
 Conc: N.D.



#44 AR-1268-4

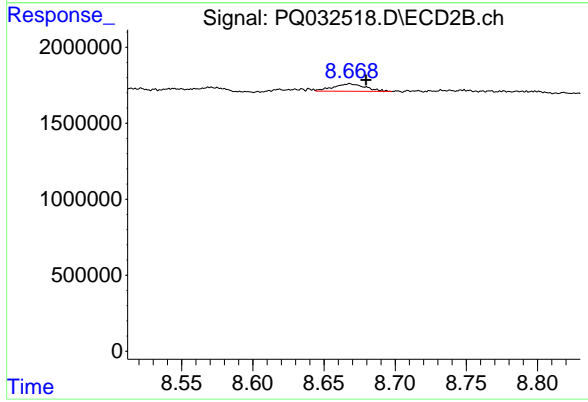
R.T.: 8.108 min
 Delta R.T.: -0.059 min
 Response: 1699940
 Conc: 29.59 ng/ml



#45 AR-1268-5

R.T.: 0.000 min
 Exp R.T.: 10.099 min
 Response: 0
 Conc: N.D.

Instrument :
 ECD_Q
 ClientSampleId :



#45 AR-1268-5

R.T.: 8.668 min
 Delta R.T.: -0.011 min
 Response: 763793
 Conc: 1.07 ng/ml