

Data Path : Z:\pestpcbsrv\HPCHEM1\ECD\_Q\Data\PQ100218\  
 Data File : PQ032534.D  
 Signal(s) : Signal #1: ECD1A.ch Signal #2: ECD2B.ch  
 Acq On : 02 Oct 2018 23:14  
 Operator : SM\SJ  
 Sample : J5187-16  
 Misc :  
 ALS Vial : 27 Sample Multiplier: 1

Instrument :  
 ECD\_Q  
 ClientSampled :

Integration File signal 1: autoint1.e  
 Integration File signal 2: autoint2.e  
 Quant Time: Oct 03 02:15:05 2018  
 Quant Method : Z:\pestpcbsrv\HPCHEM1\ECD\_Q\Method\PQ091818.M  
 Quant Title : GC EXTRACTABLES  
 QLast Update : Wed Sep 19 02:07:33 2018  
 Response via : Initial Calibration  
 Integrator: ChemStation

Volume Inj. : 2 µl  
 Signal #1 Phase : ZB-MR1 Signal #2 Phase: ZB-MR2  
 Signal #1 Info : 30Mx0.32mmx 0.50µ Signal #2 Info : 30M x 0.32mm x 0.25µm

Compound	RT#1	RT#2	Resp#1	Resp#2	ng/ml	ng/ml
System Monitoring Compounds						
1) SA Tetrachlo...	4.589	3.868	38139656	28590894	16.449	14.276
2) SA Decachlor...	10.440	8.937	33587337	26047660	16.112	13.452
Target Compounds						
3) L1 AR-1016-1	0.000	4.610	0	2639317	N.D.	54.701 #
4) L1 AR-1016-2	5.536	4.967	707777	596932	13.497	8.846 #
5) L1 AR-1016-3	0.000	4.967	0	596932	N.D.	6.389 #
6) L1 AR-1016-4	0.000	5.088	0	224796	N.D.	3.786 #
7) L1 AR-1016-5	0.000	5.418	0	720294	N.D.	13.782 #
8) L2 AR-1221-1	4.797	4.106	2680504	552089	113.680	27.233 #
9) L2 AR-1221-2	4.870	4.172	2964143	601368	168.873	38.493 #
10) L2 AR-1221-3	4.979	4.258	5155095	2628013	93.079	53.663 #
11) L3 AR-1232-1	0.000	4.762	0	1331004	N.D.	76.362 #
12) L3 AR-1232-2	0.000	4.864	0	2461407	N.D.	487.829 #
13) L3 AR-1232-3	6.066	5.277	3859512	1425354	669.724	90.875 #
14) L3 AR-1232-4	6.432	5.575	3454137	1118831	716.080	60.584 #
15) L3 AR-1232-5	0.000	6.162	0	1710768	N.D.	599.550 #
16) L4 AR-1242-1	5.403	4.610	1144214	2639317	51.714	132.777 #
17) L4 AR-1242-2	6.066	5.201	3859512	579705	106.307	16.159 #
18) L4 AR-1242-3	0.000	5.277	0	1425354	N.D.	121.067 #
20) L4 AR-1242-5	6.432	6.025	3454137	1975389	76.018	83.223
21) L5 AR-1248-1	6.031	5.201	2202641	579705	38.060	11.787 #
22) L5 AR-1248-2	0.000	5.760	0	1208662	N.D.	13.222 #
23) L5 AR-1248-3	0.000	5.820	0	1032243	N.D.	16.321 #
24) L5 AR-1248-4	0.000	6.025	0	1975389	N.D.	36.208 #
25) L5 AR-1248-5	6.865	6.376	2733750	161017	59.767	3.956 #
26) L6 AR-1254-1	6.865	0.000	2733750	0	16.487	N.D. #
27) L6 AR-1254-2	0.000	6.234	0	2020920	N.D.	20.448 #
28) L6 AR-1254-3	0.000	6.613	0	796346	N.D.	6.350 #
29) L6 AR-1254-4	0.000	6.848	0	2054715	N.D.	23.359 #
30) L6 AR-1254-5	0.000	6.961	0	1128317	N.D.	6.496 #
31) L7 AR-1260-1	0.000	6.393	0	254250	N.D.	2.373 #
32) L7 AR-1260-2	0.000	6.636	0	672779	N.D.	5.201 #
33) L7 AR-1260-3	0.000	6.848	0	2054715	N.D.	17.027 #
34) L7 AR-1260-4	8.201	0.000	1845029	0	16.151	N.D. #
35) L7 AR-1260-5	0.000	7.545	0	1525637	N.D.	6.389 #
36) L8 AR-1262-1	0.000	6.376	0	161017	N.D.	3.058 #
38) L8 AR-1262-3	0.000	7.437	0	2612268	N.D.	47.822 #
39) L8 AR-1262-4	0.000	7.787	0	471054	N.D.	5.270 #
41) L9 AR-1268-1	0.000	6.961	0	1128317	N.D.	22.392 #
42) L9 AR-1268-2	8.201	7.817	1845029	1066683	27.092	4.018 #
43) L9 AR-1268-3	0.000	8.107	0	1994935	N.D.	9.132 #
44) L9 AR-1268-4	0.000	8.107	0	1994935	N.D.	34.726 #

Data Path : Z:\pestpcbsrv\HPCHEM1\ECD\_Q\Data\PQ100218\  
 Data File : PQ032534.D  
 Signal(s) : Signal #1: ECD1A.ch Signal #2: ECD2B.ch  
 Acq On : 02 Oct 2018 23:14  
 Operator : SM\SJ  
 Sample : J5187-16  
 Misc :  
 ALS Vial : 27 Sample Multiplier: 1

Instrument :  
 ECD\_Q  
 ClientSampleId :

Integration File signal 1: autoint1.e  
 Integration File signal 2: autoint2.e  
 Quant Time: Oct 03 02:15:05 2018  
 Quant Method : Z:\pestpcbsrv\HPCHEM1\ECD\_Q\Method\PQ091818.M  
 Quant Title : GC EXTRACTABLES  
 QLast Update : Wed Sep 19 02:07:33 2018  
 Response via : Initial Calibration  
 Integrator: ChemStation

Volume Inj. : 2 µl  
 Signal #1 Phase : ZB-MR1 Signal #2 Phase: ZB-MR2  
 Signal #1 Info : 30Mx0.32mmx 0.50µ Signal #2 Info : 30M x 0.32mm x 0.25µm

	Compound	RT#1	RT#2	Resp#1	Resp#2	ng/ml	ng/ml
45) L9	AR-1268-5	0.000	8.667	0	1337615	N.D.	1.880 #

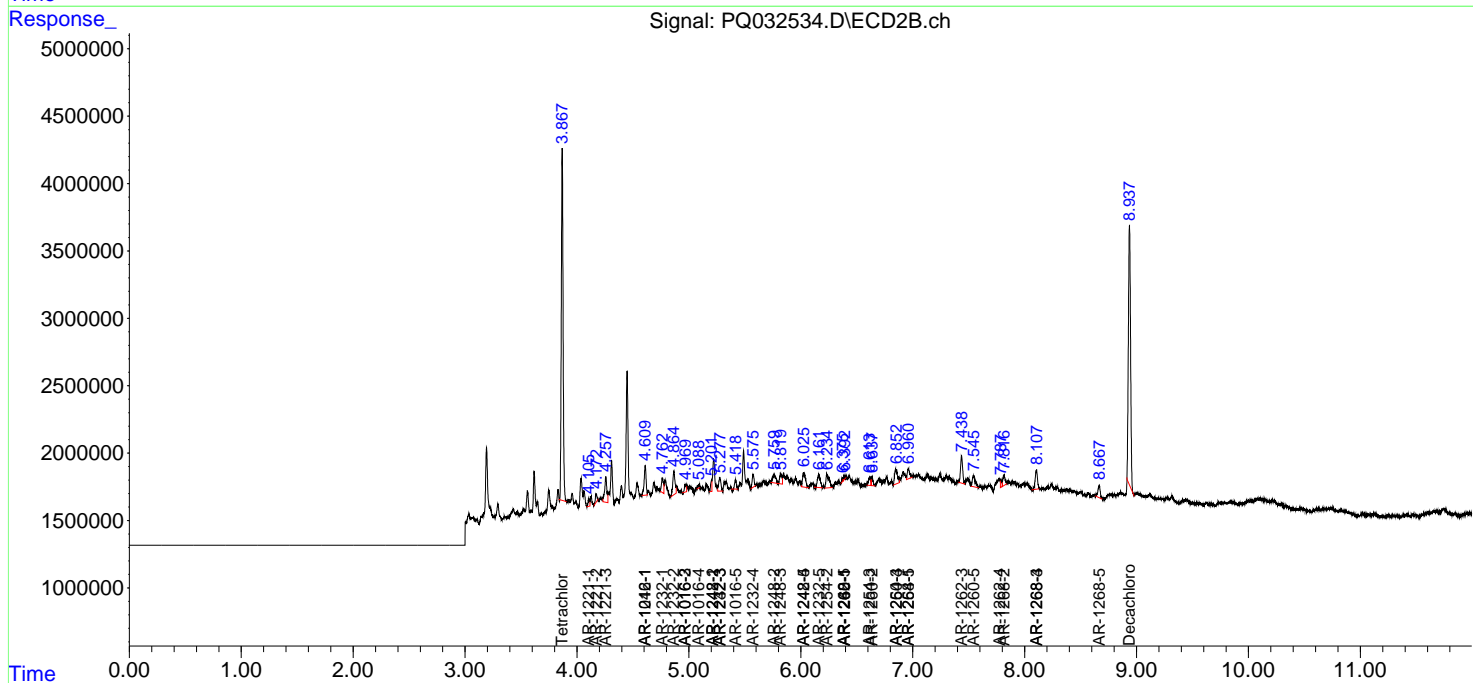
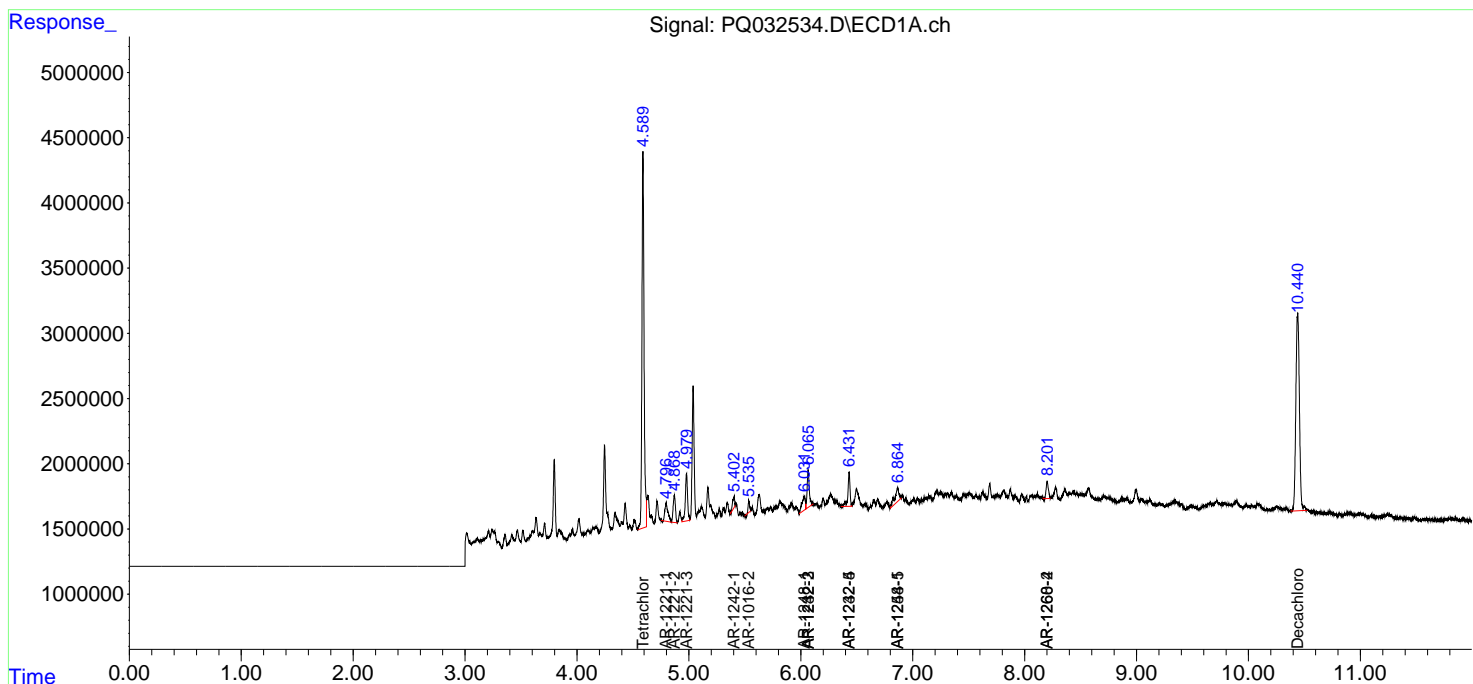
(f)=RT Delta > 1/2 Window (#)=Amounts differ by > 25% (m)=manual int.

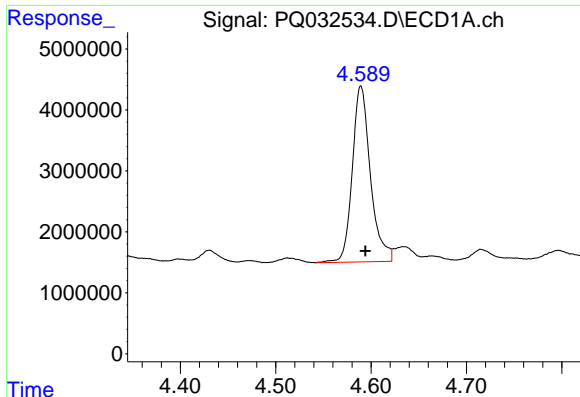
Data Path : Z:\pestpcbsrv\HPCHEM1\ECD\_Q\Data\PQ100218\  
 Data File : PQ032534.D  
 Signal(s) : Signal #1: ECD1A.ch Signal #2: ECD2B.ch  
 Acq On : 02 Oct 2018 23:14  
 Operator : SM\SJ  
 Sample : J5187-16  
 Misc :  
 ALS Vial : 27 Sample Multiplier: 1

Instrument :  
 ECD\_Q  
 ClientSampled :

Integration File signal 1: autoint1.e  
 Integration File signal 2: autoint2.e  
 Quant Time: Oct 03 02:15:05 2018  
 Quant Method : Z:\pestpcbsrv\HPCHEM1\ECD\_Q\Method\PQ091818.M  
 Quant Title : GC EXTRACTABLES  
 QLast Update : Wed Sep 19 02:07:33 2018  
 Response via : Initial Calibration  
 Integrator: ChemStation

Volume Inj. : 2 µl  
 Signal #1 Phase : ZB-MR1 Signal #2 Phase: ZB-MR2  
 Signal #1 Info : 30Mx0.32mmx 0.50µ Signal #2 Info : 30M x 0.32mm x 0.25µm

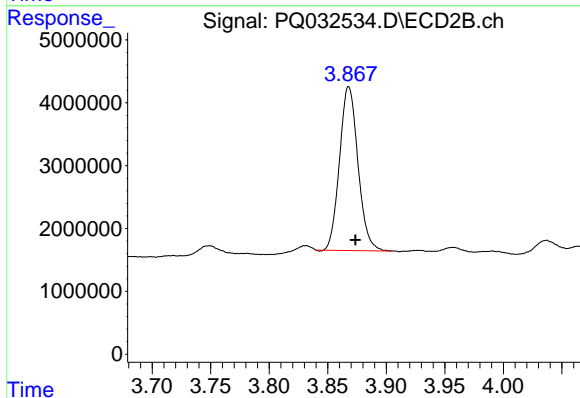




#1 Tetrachloro-m-xylene

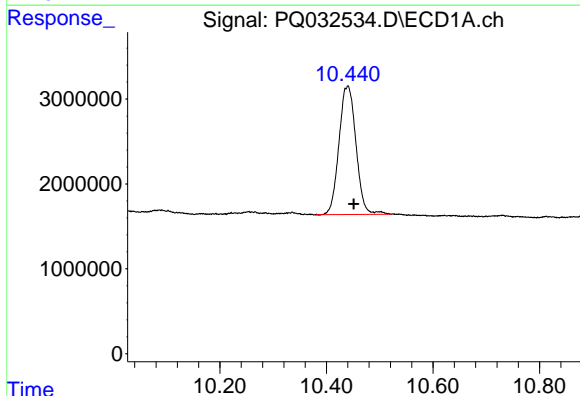
R.T.: 4.589 min  
 Delta R.T.: -0.005 min  
 Response: 38139656  
 Conc: 16.45 ng/ml

Instrument :  
 ECD\_Q  
 ClientSampleId :



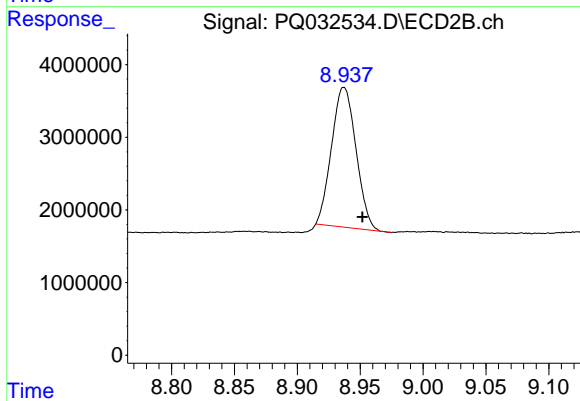
#1 Tetrachloro-m-xylene

R.T.: 3.868 min  
 Delta R.T.: -0.006 min  
 Response: 28590894  
 Conc: 14.28 ng/ml



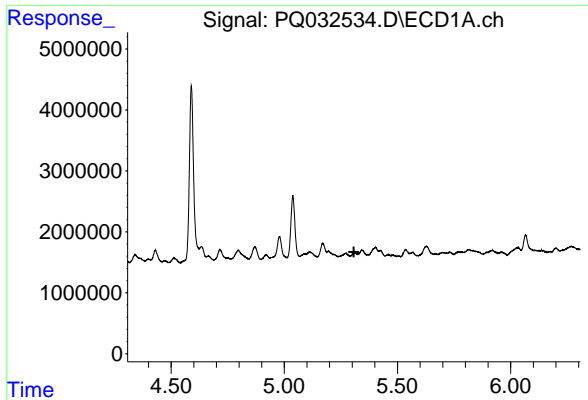
#2 Decachlorobiphenyl

R.T.: 10.440 min  
 Delta R.T.: -0.011 min  
 Response: 33587337  
 Conc: 16.11 ng/ml



#2 Decachlorobiphenyl

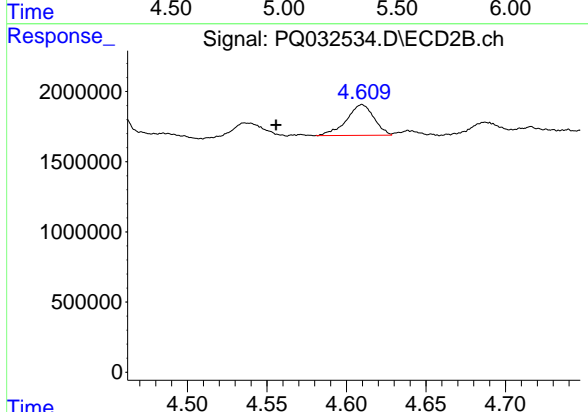
R.T.: 8.937 min  
 Delta R.T.: -0.015 min  
 Response: 26047660  
 Conc: 13.45 ng/ml



#3 AR-1016-1

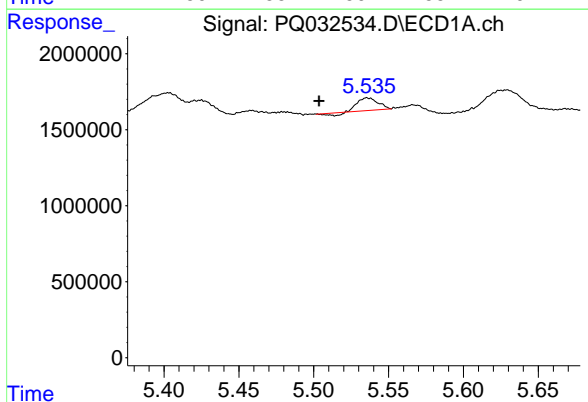
R.T.: 0.000 min  
 Exp R.T.: 5.307 min  
 Response: 0  
 Conc: N.D.

Instrument :  
 ECD\_Q  
 ClientSampleId :



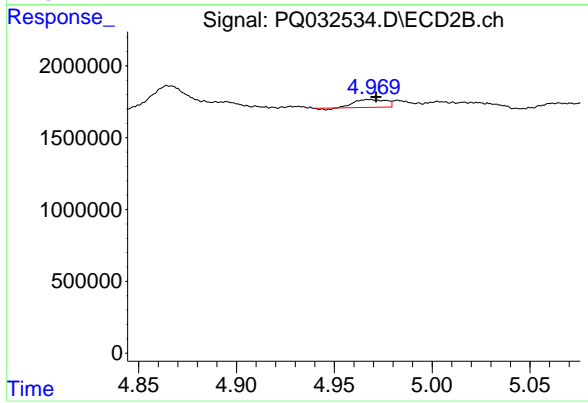
#3 AR-1016-1

R.T.: 4.610 min  
 Delta R.T.: 0.054 min  
 Response: 2639317  
 Conc: 54.70 ng/ml



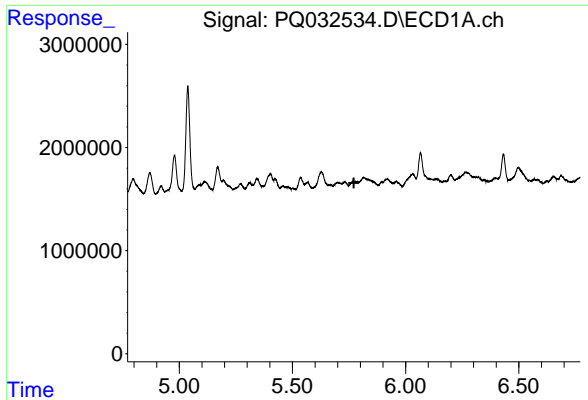
#4 AR-1016-2

R.T.: 5.536 min  
 Delta R.T.: 0.032 min  
 Response: 707777  
 Conc: 13.50 ng/ml



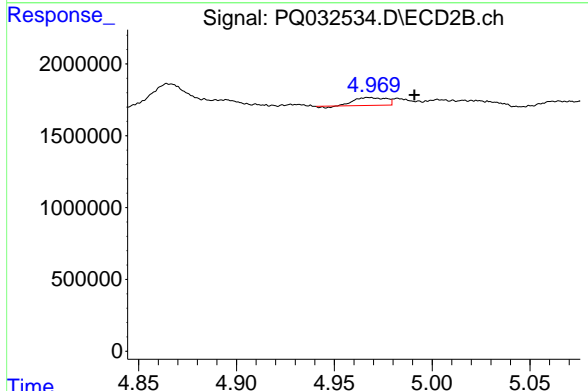
#4 AR-1016-2

R.T.: 4.967 min  
 Delta R.T.: -0.004 min  
 Response: 596932  
 Conc: 8.85 ng/ml

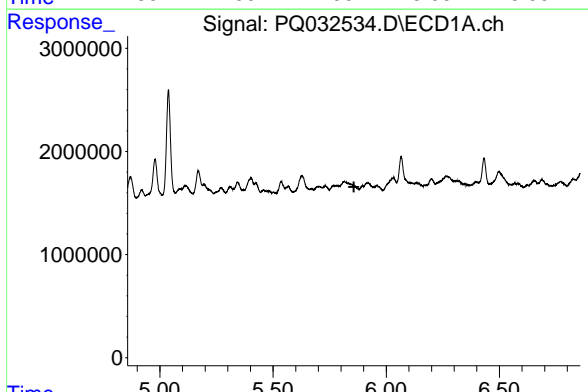


#5 AR-1016-3  
 R.T.: 0.000 min  
 Exp R.T.: 5.772 min  
 Response: 0  
 Conc: N.D.

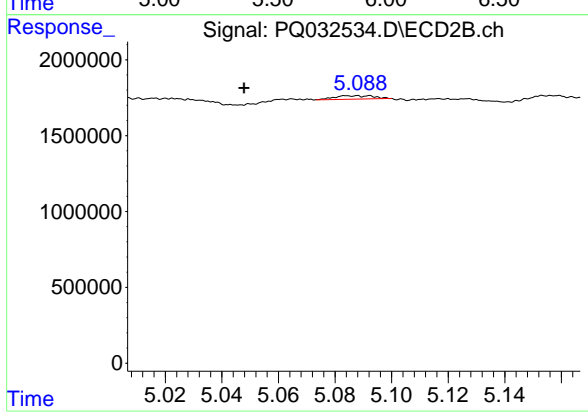
Instrument :  
 ECD\_Q  
 ClientSampled :



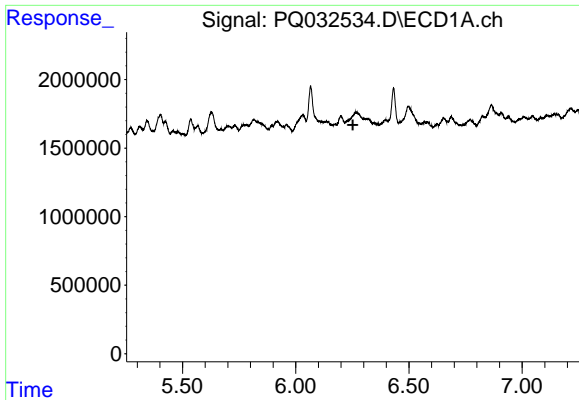
#5 AR-1016-3  
 R.T.: 4.967 min  
 Delta R.T.: -0.024 min  
 Response: 596932  
 Conc: 6.39 ng/ml



#6 AR-1016-4  
 R.T.: 0.000 min  
 Exp R.T.: 5.857 min  
 Response: 0  
 Conc: N.D.



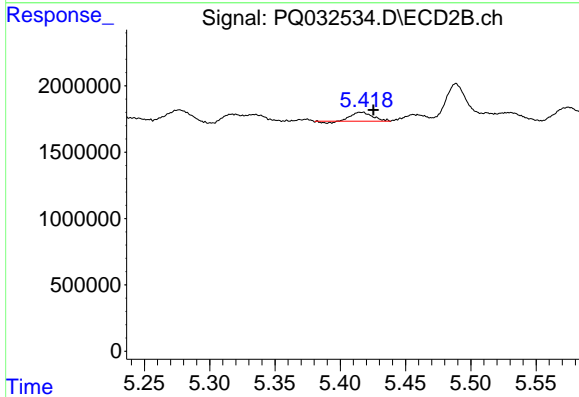
#6 AR-1016-4  
 R.T.: 5.088 min  
 Delta R.T.: 0.040 min  
 Response: 224796  
 Conc: 3.79 ng/ml



#7 AR-1016-5

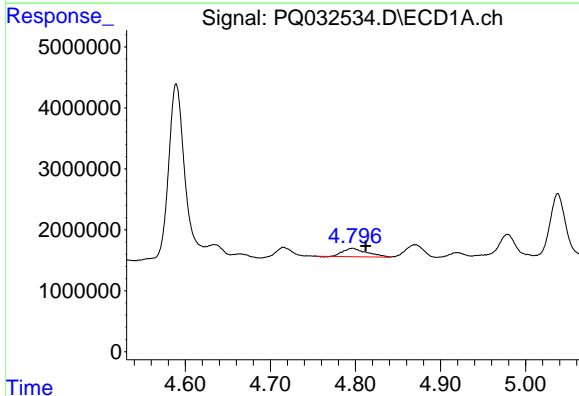
R.T.: 0.000 min  
 Exp R.T.: 6.252 min  
 Response: 0  
 Conc: N.D.

Instrument :  
 ECD\_Q  
 ClientSampled :



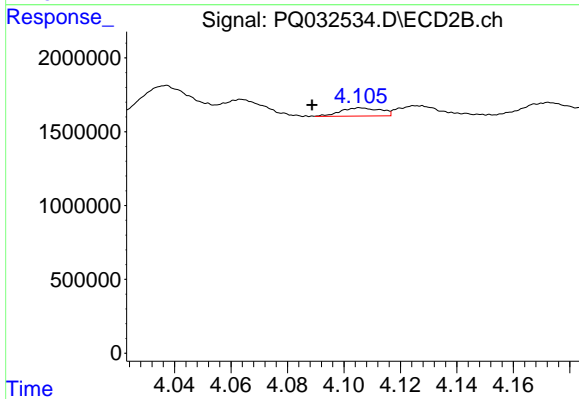
#7 AR-1016-5

R.T.: 5.418 min  
 Delta R.T.: -0.008 min  
 Response: 720294  
 Conc: 13.78 ng/ml



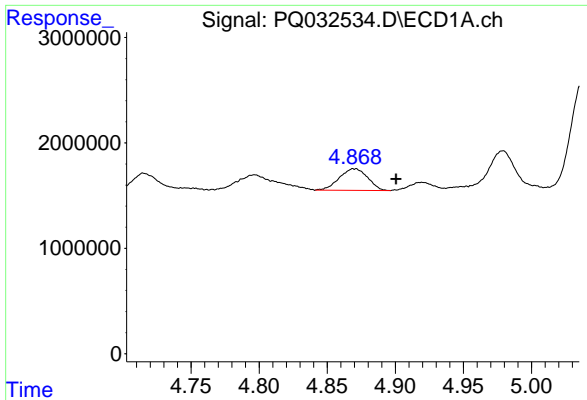
#8 AR-1221-1

R.T.: 4.797 min  
 Delta R.T.: -0.016 min  
 Response: 2680504  
 Conc: 113.68 ng/ml



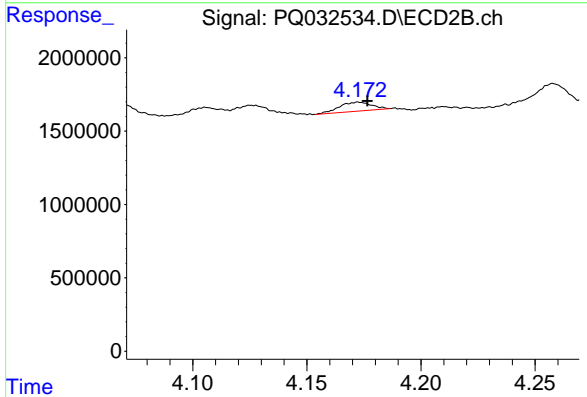
#8 AR-1221-1

R.T.: 4.106 min  
 Delta R.T.: 0.017 min  
 Response: 552089  
 Conc: 27.23 ng/ml

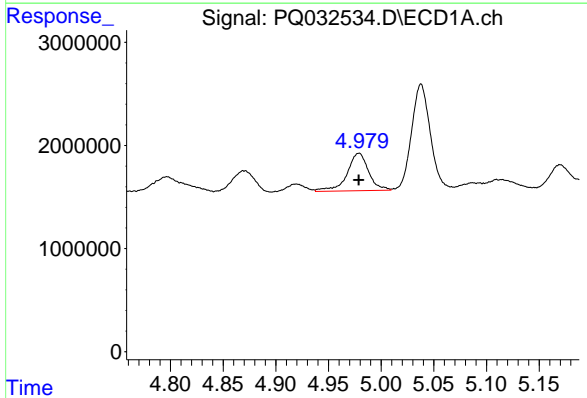


#9 AR-1221-2  
 R.T.: 4.870 min  
 Delta R.T.: -0.031 min  
 Response: 2964143  
 Conc: 168.87 ng/ml

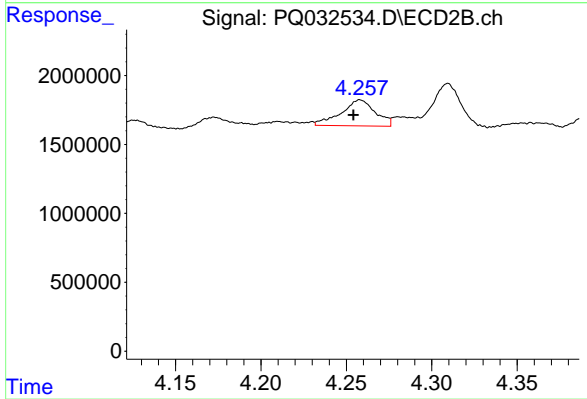
Instrument :  
 ECD\_Q  
 ClientSampleId :



#9 AR-1221-2  
 R.T.: 4.172 min  
 Delta R.T.: -0.004 min  
 Response: 601368  
 Conc: 38.49 ng/ml

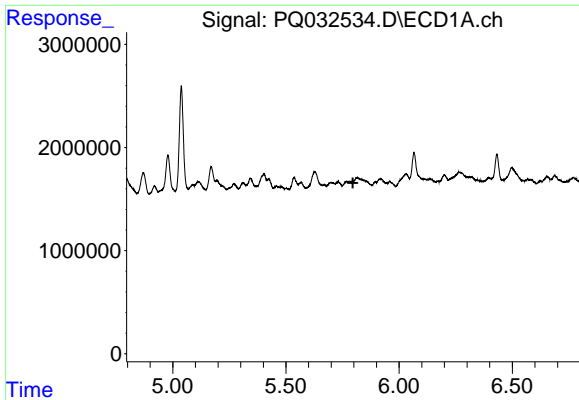


#10 AR-1221-3  
 R.T.: 4.979 min  
 Delta R.T.: 0.000 min  
 Response: 5155095  
 Conc: 93.08 ng/ml



#10 AR-1221-3  
 R.T.: 4.258 min  
 Delta R.T.: 0.004 min  
 Response: 2628013  
 Conc: 53.66 ng/ml

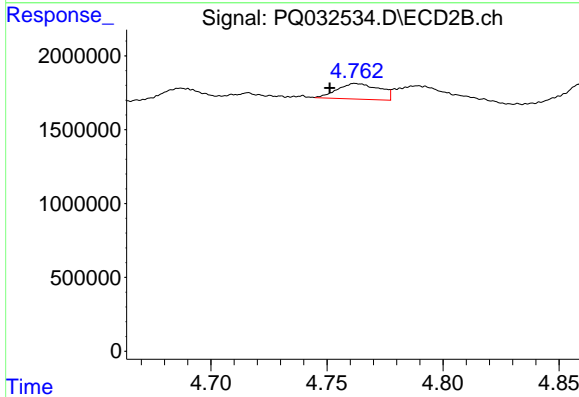




#11 AR-1232-1

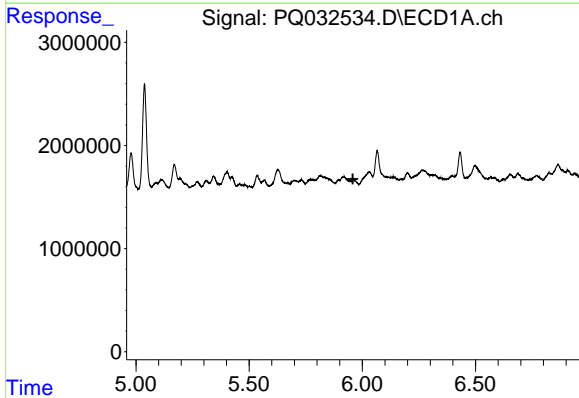
R.T.: 0.000 min  
 Exp R.T. : 5.796 min  
 Response: 0  
 Conc: N.D.

Instrument :  
 ECD\_Q  
 ClientSampled :



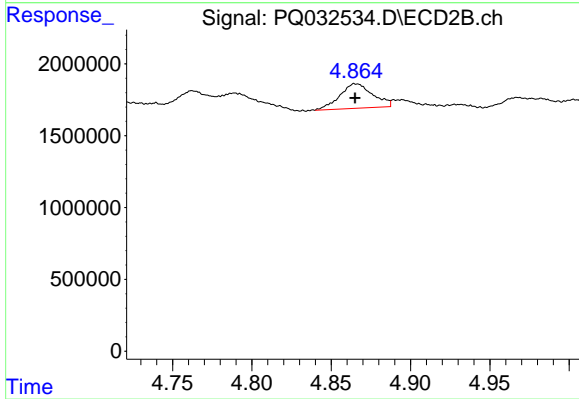
#11 AR-1232-1

R.T.: 4.762 min  
 Delta R.T.: 0.011 min  
 Response: 1331004  
 Conc: 76.36 ng/ml



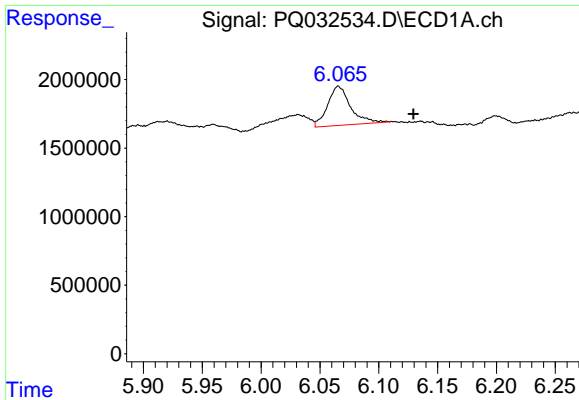
#12 AR-1232-2

R.T.: 0.000 min  
 Exp R.T. : 5.959 min  
 Response: 0  
 Conc: N.D.



#12 AR-1232-2

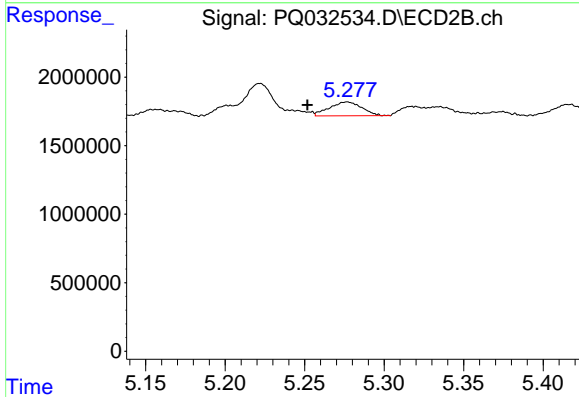
R.T.: 4.864 min  
 Delta R.T.: 0.000 min  
 Response: 2461407  
 Conc: 487.83 ng/ml



#13 AR-1232-3

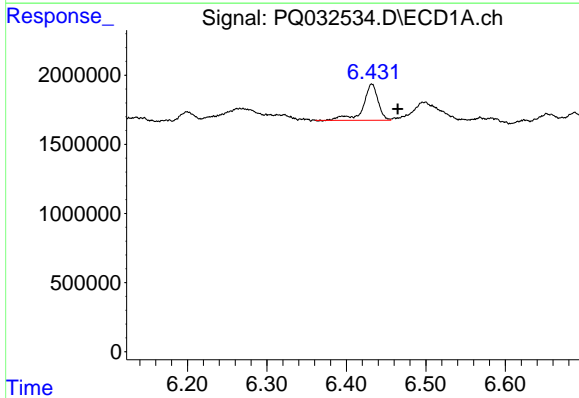
R.T.: 6.066 min  
 Delta R.T.: -0.064 min  
 Response: 3859512  
 Conc: 669.72 ng/ml

Instrument :  
 ECD\_Q  
 ClientSampleId :



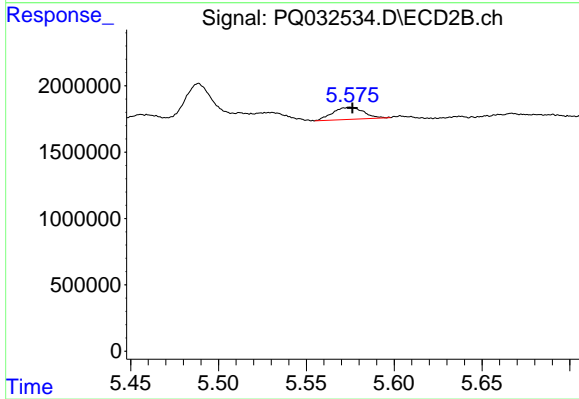
#13 AR-1232-3

R.T.: 5.277 min  
 Delta R.T.: 0.025 min  
 Response: 1425354  
 Conc: 90.87 ng/ml



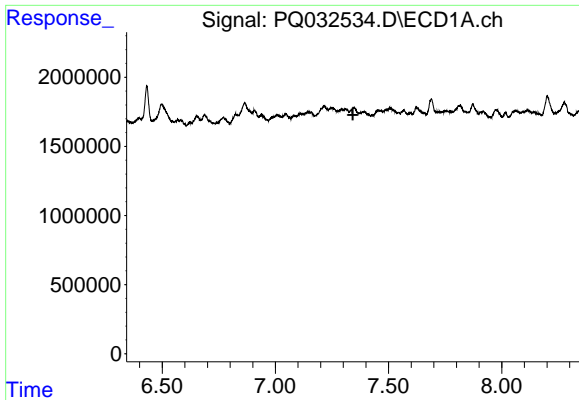
#14 AR-1232-4

R.T.: 6.432 min  
 Delta R.T.: -0.033 min  
 Response: 3454137  
 Conc: 716.08 ng/ml



#14 AR-1232-4

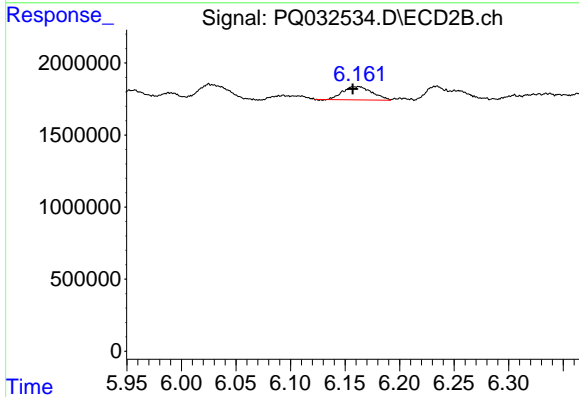
R.T.: 5.575 min  
 Delta R.T.: -0.001 min  
 Response: 1118831  
 Conc: 60.58 ng/ml



#15 AR-1232-5

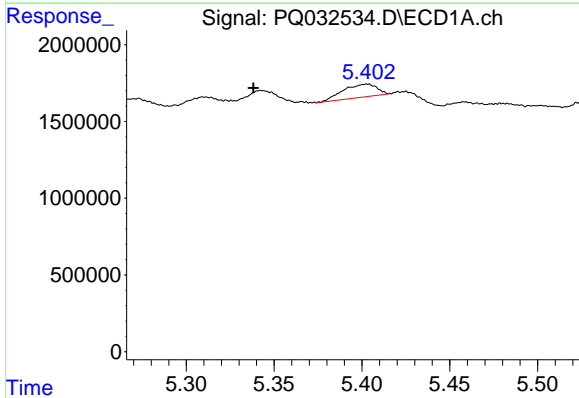
R.T.: 0.000 min  
 Exp R.T.: 7.343 min  
 Response: 0  
 Conc: N.D.

Instrument :  
 ECD\_Q  
 ClientSampled :



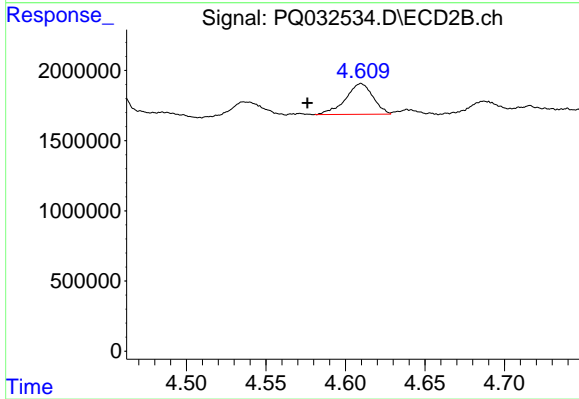
#15 AR-1232-5

R.T.: 6.162 min  
 Delta R.T.: 0.005 min  
 Response: 1710768  
 Conc: 599.55 ng/ml



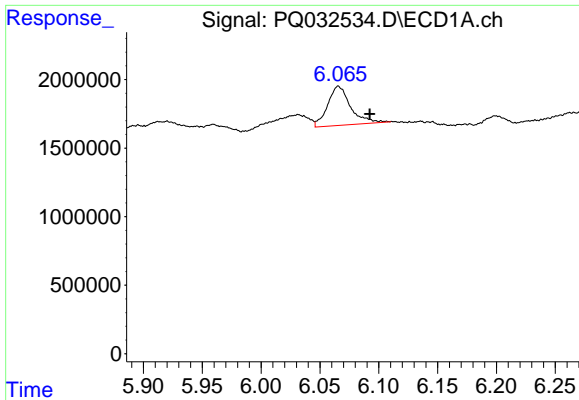
#16 AR-1242-1

R.T.: 5.403 min  
 Delta R.T.: 0.064 min  
 Response: 1144214  
 Conc: 51.71 ng/ml



#16 AR-1242-1

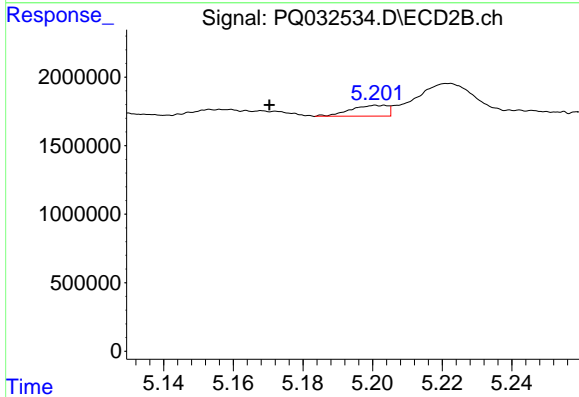
R.T.: 4.610 min  
 Delta R.T.: 0.034 min  
 Response: 2639317  
 Conc: 132.78 ng/ml



#17 AR-1242-2

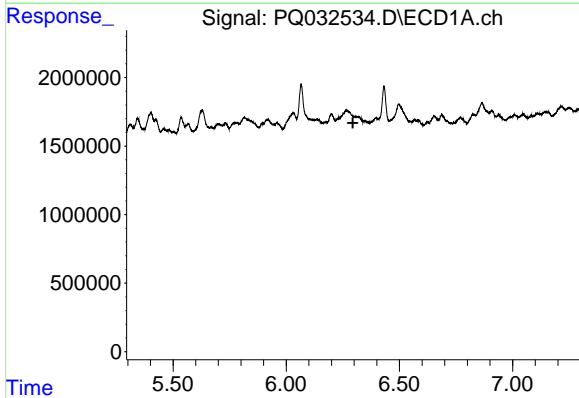
R.T.: 6.066 min  
 Delta R.T.: -0.027 min  
 Response: 3859512  
 Conc: 106.31 ng/ml

Instrument :  
 ECD\_Q  
 ClientSampleId :



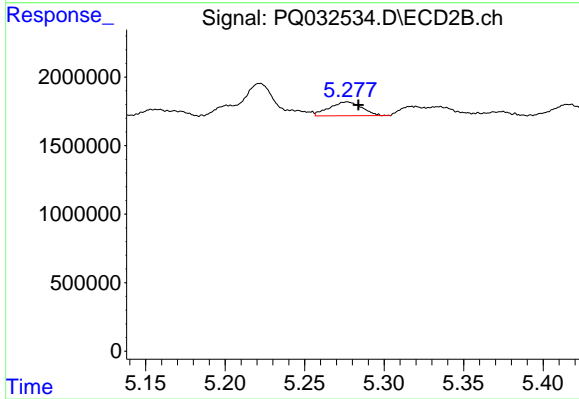
#17 AR-1242-2

R.T.: 5.201 min  
 Delta R.T.: 0.031 min  
 Response: 579705  
 Conc: 16.16 ng/ml



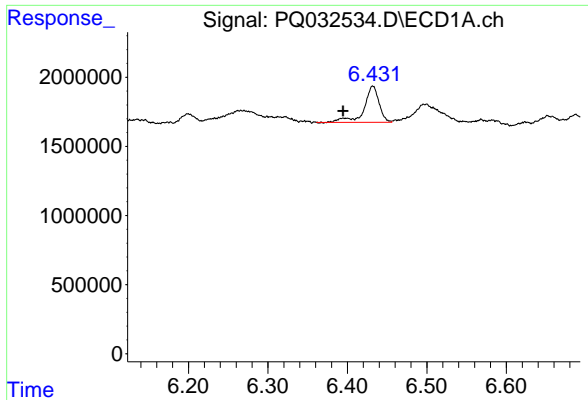
#18 AR-1242-3

R.T.: 0.000 min  
 Exp R.T. : 6.294 min  
 Response: 0  
 Conc: N.D.



#18 AR-1242-3

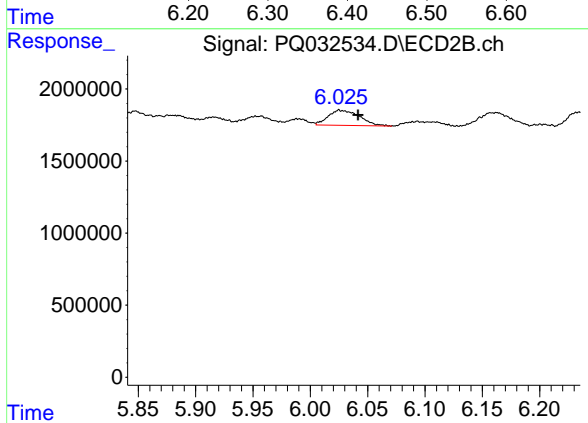
R.T.: 5.277 min  
 Delta R.T.: -0.007 min  
 Response: 1425354  
 Conc: 121.07 ng/ml



#20 AR-1242-5

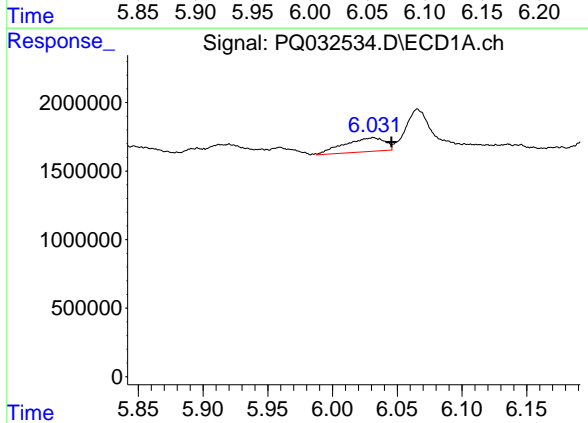
R.T.: 6.432 min  
 Delta R.T.: 0.038 min  
 Response: 3454137  
 Conc: 76.02 ng/ml

Instrument :  
 ECD\_Q  
 ClientSampled :



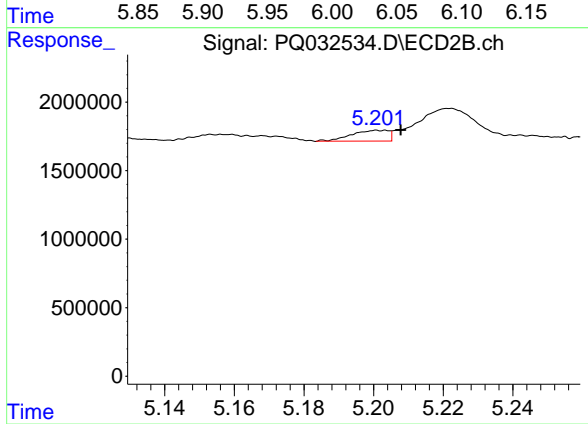
#20 AR-1242-5

R.T.: 6.025 min  
 Delta R.T.: -0.017 min  
 Response: 1975389  
 Conc: 83.22 ng/ml



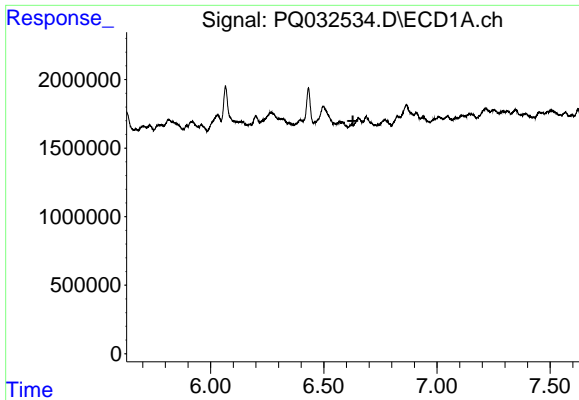
#21 AR-1248-1

R.T.: 6.031 min  
 Delta R.T.: -0.014 min  
 Response: 2202641  
 Conc: 38.06 ng/ml



#21 AR-1248-1

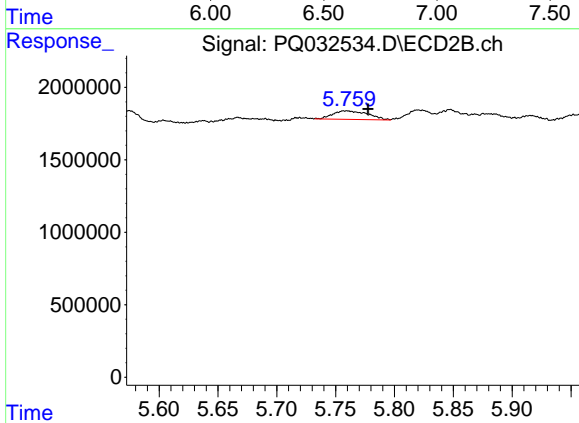
R.T.: 5.201 min  
 Delta R.T.: -0.007 min  
 Response: 579705  
 Conc: 11.79 ng/ml



#22 AR-1248-2

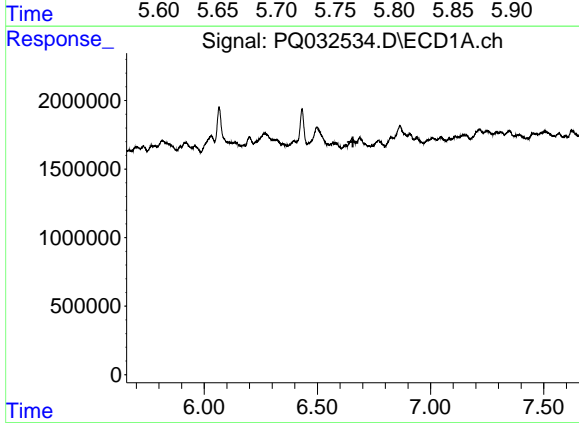
R.T.: 0.000 min  
 Exp R.T.: 6.629 min  
 Response: 0  
 Conc: N.D.

Instrument :  
 ECD\_Q  
 ClientSampleId :



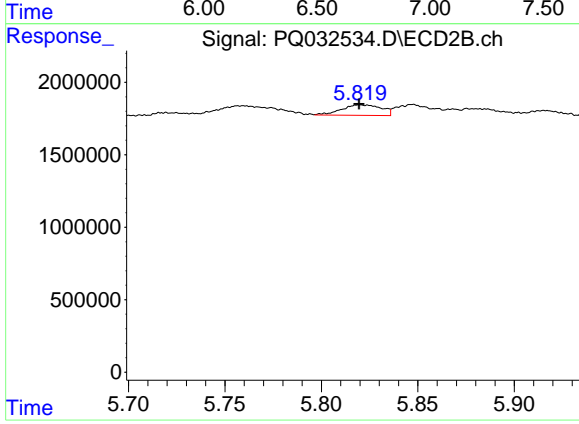
#22 AR-1248-2

R.T.: 5.760 min  
 Delta R.T.: -0.018 min  
 Response: 1208662  
 Conc: 13.22 ng/ml



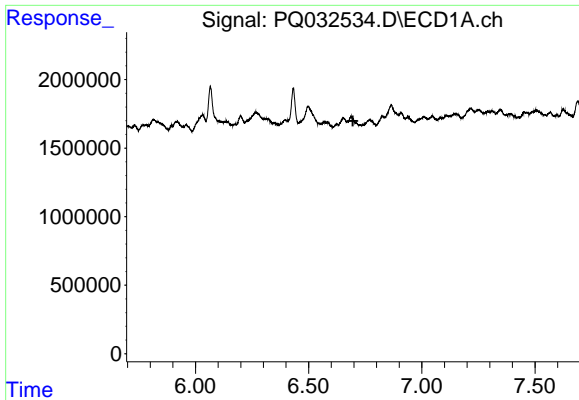
#23 AR-1248-3

R.T.: 0.000 min  
 Exp R.T.: 6.657 min  
 Response: 0  
 Conc: N.D.



#23 AR-1248-3

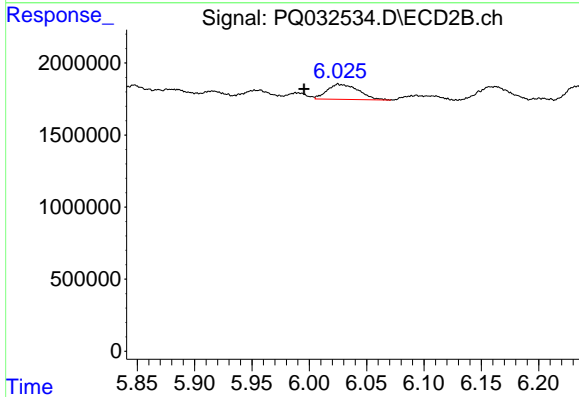
R.T.: 5.820 min  
 Delta R.T.: 0.000 min  
 Response: 1032243  
 Conc: 16.32 ng/ml



#24 AR-1248-4

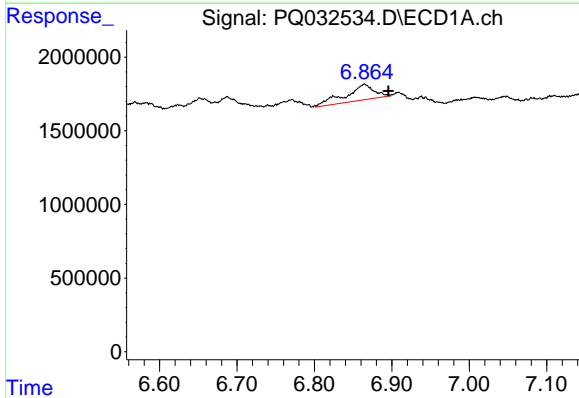
R.T.: 0.000 min  
 Exp R.T.: 6.696 min  
 Response: 0  
 Conc: N.D.

Instrument :  
 ECD\_Q  
 ClientSampled :



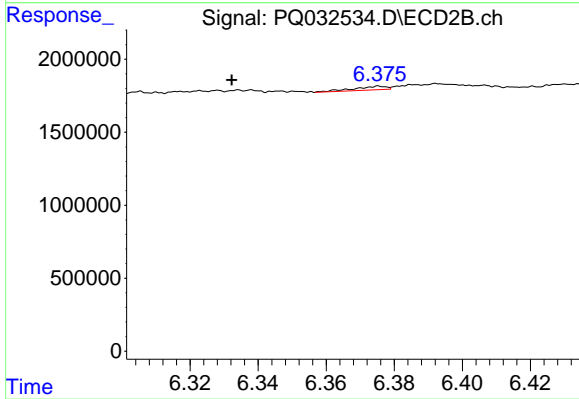
#24 AR-1248-4

R.T.: 6.025 min  
 Delta R.T.: 0.029 min  
 Response: 1975389  
 Conc: 36.21 ng/ml



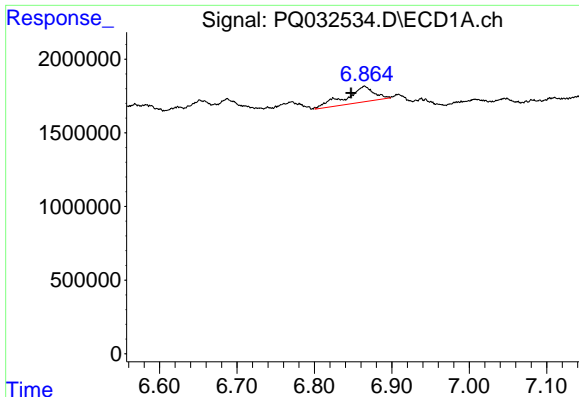
#25 AR-1248-5

R.T.: 6.865 min  
 Delta R.T.: -0.031 min  
 Response: 2733750  
 Conc: 59.77 ng/ml



#25 AR-1248-5

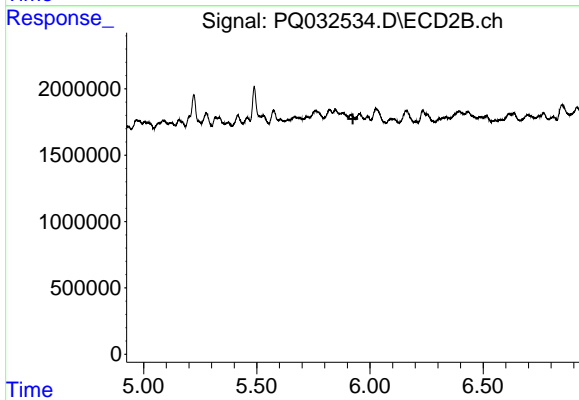
R.T.: 6.376 min  
 Delta R.T.: 0.043 min  
 Response: 161017  
 Conc: 3.96 ng/ml



#26 AR-1254-1

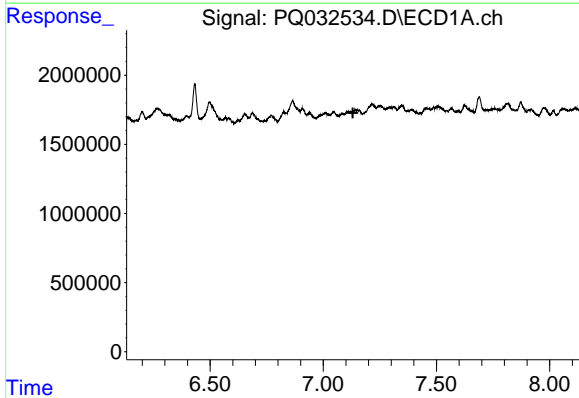
R.T.: 6.865 min  
 Delta R.T.: 0.017 min  
 Response: 2733750  
 Conc: 16.49 ng/ml

Instrument :  
 ECD\_Q  
 ClientSampleId :



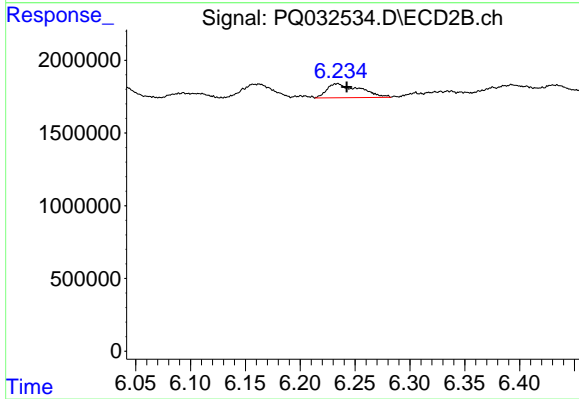
#26 AR-1254-1

R.T.: 0.000 min  
 Exp R.T. : 5.924 min  
 Response: 0  
 Conc: N.D.



#27 AR-1254-2

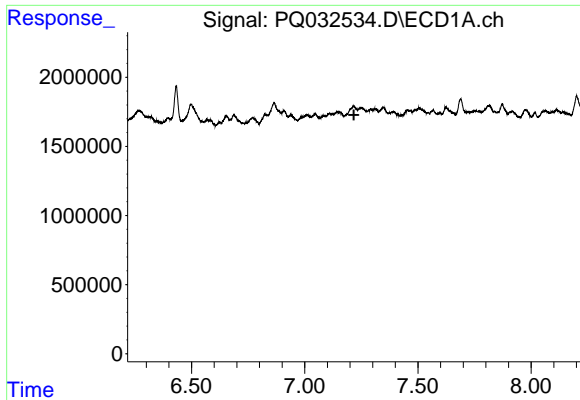
R.T.: 0.000 min  
 Exp R.T. : 7.131 min  
 Response: 0  
 Conc: N.D.



#27 AR-1254-2

R.T.: 6.234 min  
 Delta R.T.: -0.008 min  
 Response: 2020920  
 Conc: 20.45 ng/ml

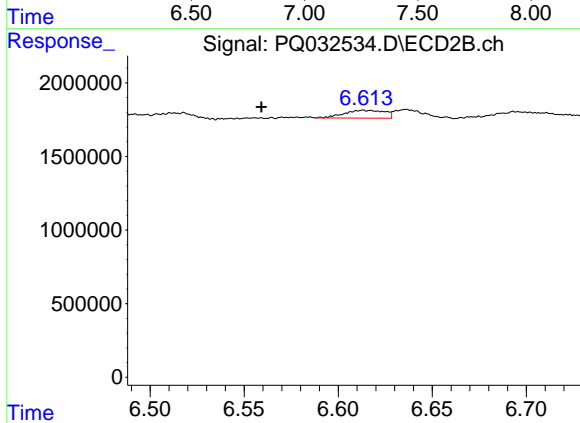




#28 AR-1254-3

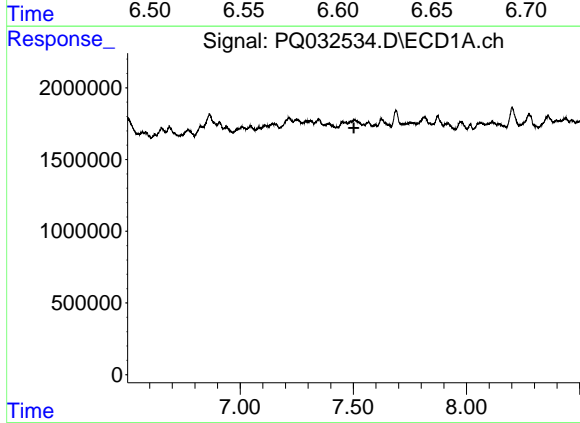
R.T.: 0.000 min  
 Exp R.T.: 7.217 min  
 Response: 0  
 Conc: N.D.

Instrument :  
 ECD\_Q  
 ClientSampled :



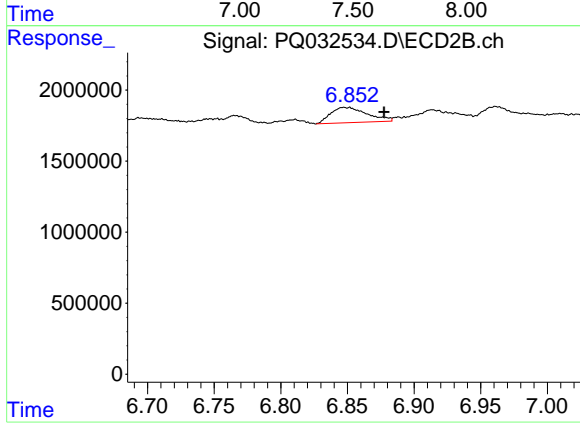
#28 AR-1254-3

R.T.: 6.613 min  
 Delta R.T.: 0.054 min  
 Response: 796346  
 Conc: 6.35 ng/ml



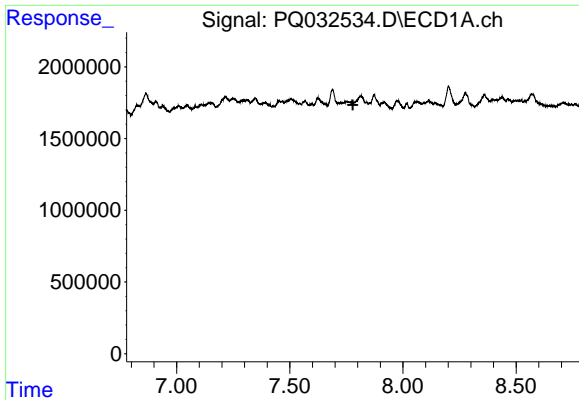
#29 AR-1254-4

R.T.: 0.000 min  
 Exp R.T.: 7.503 min  
 Response: 0  
 Conc: N.D.



#29 AR-1254-4

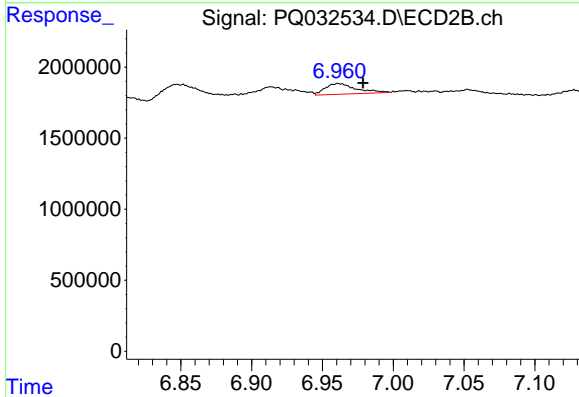
R.T.: 6.848 min  
 Delta R.T.: -0.030 min  
 Response: 2054715  
 Conc: 23.36 ng/ml



#30 AR-1254-5

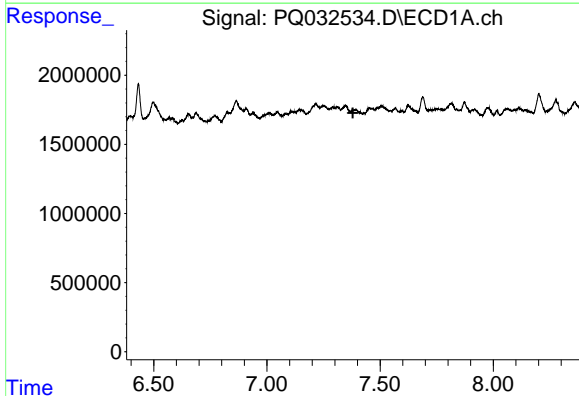
R.T.: 0.000 min  
 Exp R.T. : 7.779 min  
 Response: 0  
 Conc: N.D.

Instrument :  
 ECD\_Q  
 ClientSampled :



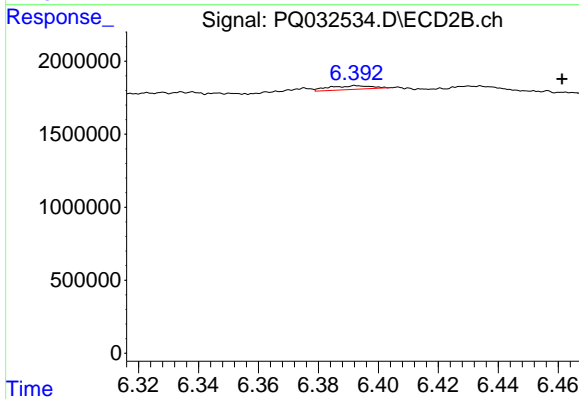
#30 AR-1254-5

R.T.: 6.961 min  
 Delta R.T.: -0.018 min  
 Response: 1128317  
 Conc: 6.50 ng/ml



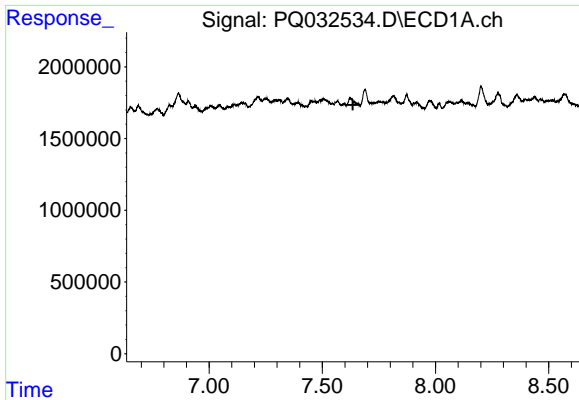
#31 AR-1260-1

R.T.: 0.000 min  
 Exp R.T. : 7.380 min  
 Response: 0  
 Conc: N.D.



#31 AR-1260-1

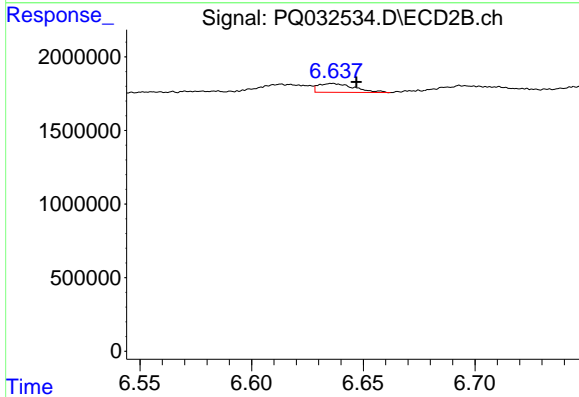
R.T.: 6.393 min  
 Delta R.T.: -0.069 min  
 Response: 254250  
 Conc: 2.37 ng/ml



#32 AR-1260-2

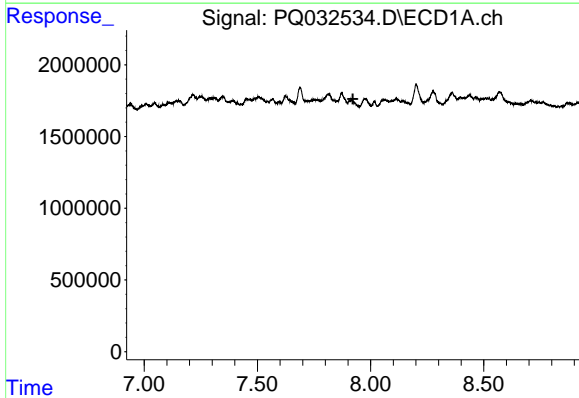
R.T.: 0.000 min  
 Exp R.T. : 7.635 min  
 Response: 0  
 Conc: N.D.

Instrument :  
 ECD\_Q  
 ClientSampled :



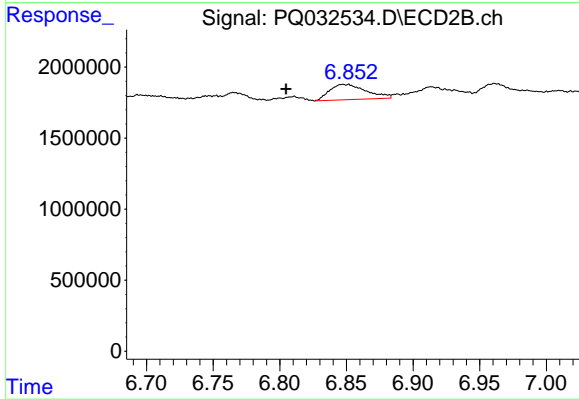
#32 AR-1260-2

R.T.: 6.636 min  
 Delta R.T.: -0.011 min  
 Response: 672779  
 Conc: 5.20 ng/ml



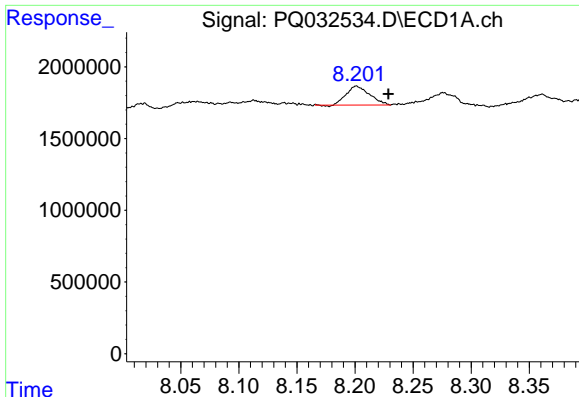
#33 AR-1260-3

R.T.: 0.000 min  
 Exp R.T. : 7.922 min  
 Response: 0  
 Conc: N.D.



#33 AR-1260-3

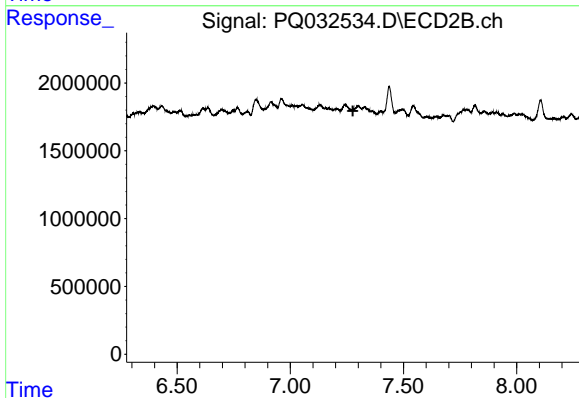
R.T.: 6.848 min  
 Delta R.T.: 0.043 min  
 Response: 2054715  
 Conc: 17.03 ng/ml



#34 AR-1260-4

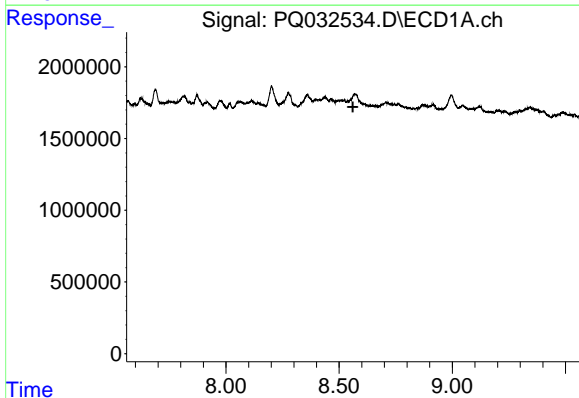
R.T.: 8.201 min  
 Delta R.T.: -0.028 min  
 Response: 1845029  
 Conc: 16.15 ng/ml

Instrument :  
 ECD\_Q  
 ClientSampled :



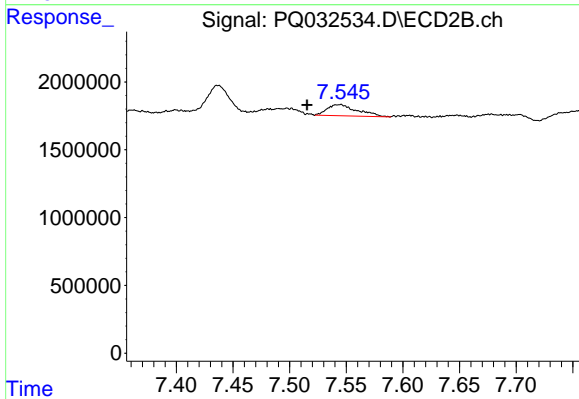
#34 AR-1260-4

R.T.: 0.000 min  
 Exp R.T. : 7.276 min  
 Response: 0  
 Conc: N.D.



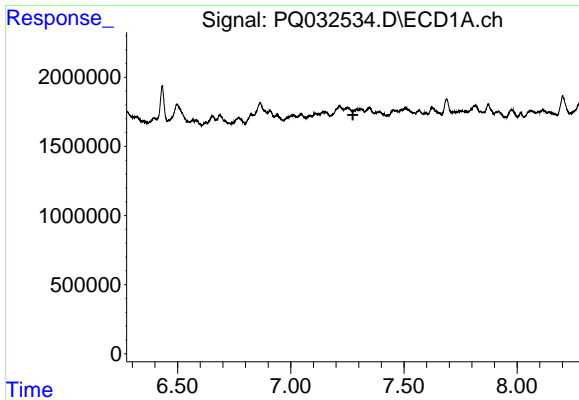
#35 AR-1260-5

R.T.: 0.000 min  
 Exp R.T. : 8.561 min  
 Response: 0  
 Conc: N.D.



#35 AR-1260-5

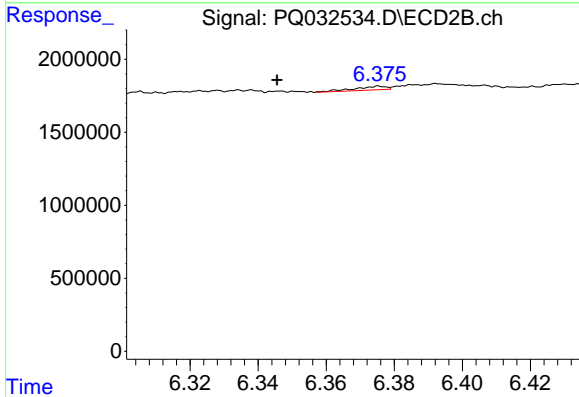
R.T.: 7.545 min  
 Delta R.T.: 0.030 min  
 Response: 1525637  
 Conc: 6.39 ng/ml



#36 AR-1262-1

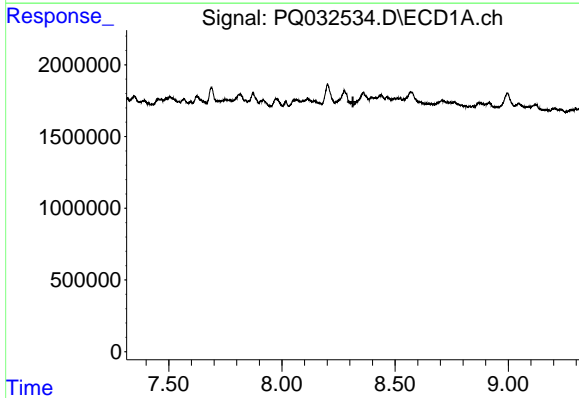
R.T.: 0.000 min  
 Exp R.T.: 7.274 min  
 Response: 0  
 Conc: N.D.

Instrument :  
 ECD\_Q  
 ClientSampleId :



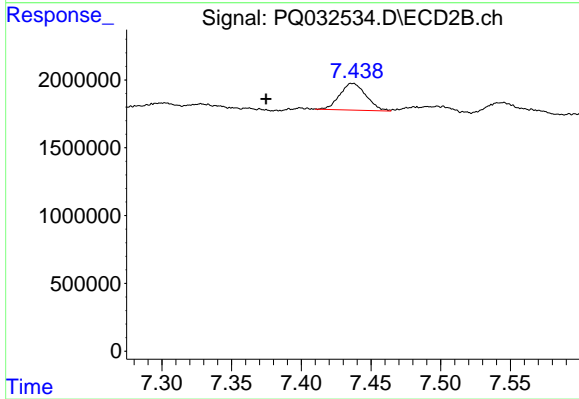
#36 AR-1262-1

R.T.: 6.376 min  
 Delta R.T.: 0.030 min  
 Response: 161017  
 Conc: 3.06 ng/ml



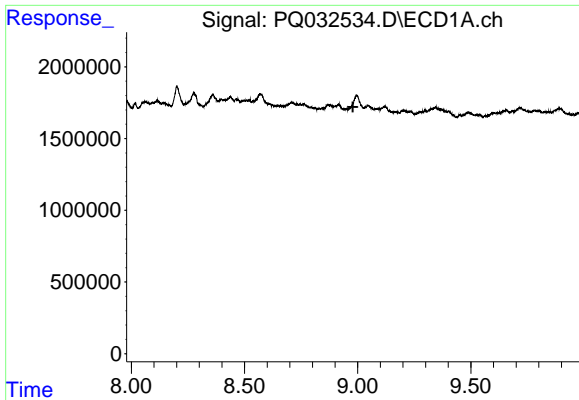
#38 AR-1262-3

R.T.: 0.000 min  
 Exp R.T.: 8.313 min  
 Response: 0  
 Conc: N.D.



#38 AR-1262-3

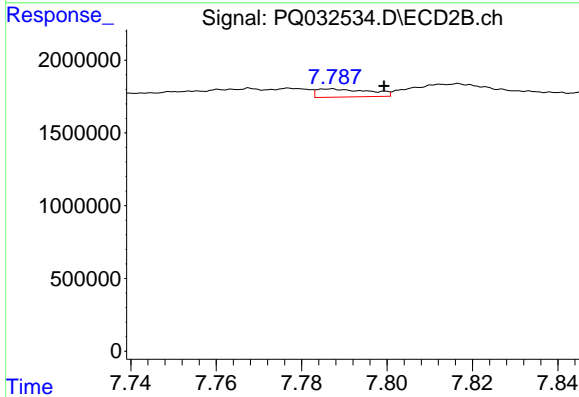
R.T.: 7.437 min  
 Delta R.T.: 0.063 min  
 Response: 2612268  
 Conc: 47.82 ng/ml



#39 AR-1262-4

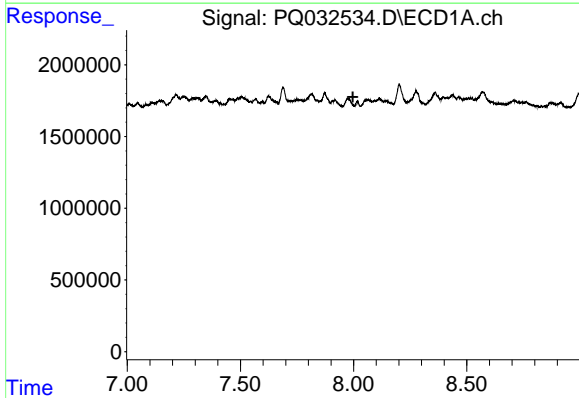
R.T.: 0.000 min  
 Exp R.T.: 8.979 min  
 Response: 0  
 Conc: N.D.

Instrument :  
 ECD\_Q  
 ClientSampled :



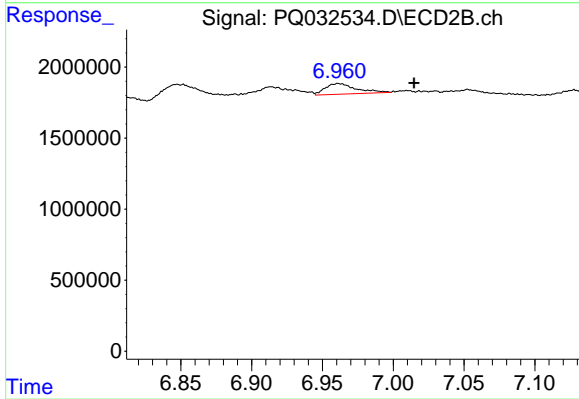
#39 AR-1262-4

R.T.: 7.787 min  
 Delta R.T.: -0.012 min  
 Response: 471054  
 Conc: 5.27 ng/ml



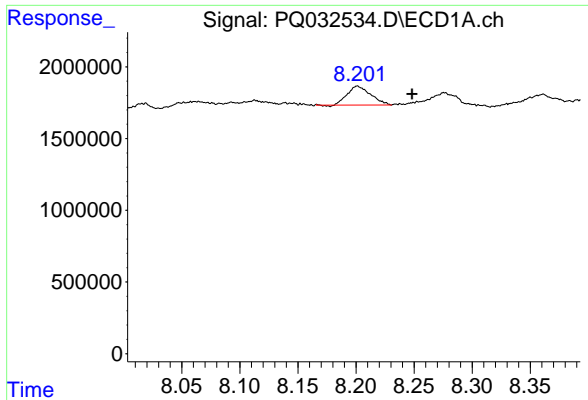
#41 AR-1268-1

R.T.: 0.000 min  
 Exp R.T.: 7.997 min  
 Response: 0  
 Conc: N.D.



#41 AR-1268-1

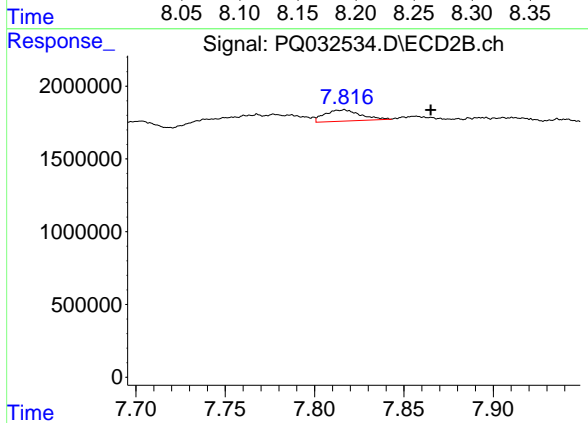
R.T.: 6.961 min  
 Delta R.T.: -0.054 min  
 Response: 1128317  
 Conc: 22.39 ng/ml



#42 AR-1268-2

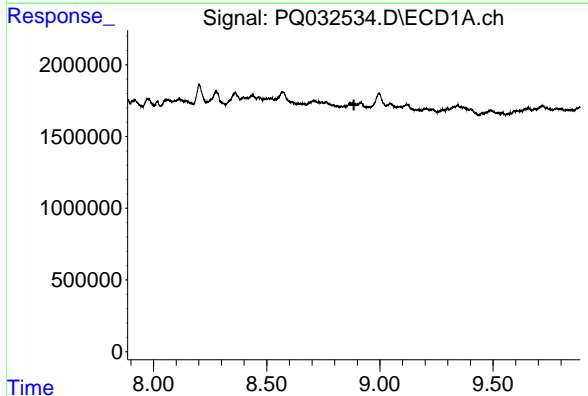
R.T.: 8.201 min  
 Delta R.T.: -0.047 min  
 Response: 1845029  
 Conc: 27.09 ng/ml

Instrument :  
 ECD\_Q  
 ClientSampled :



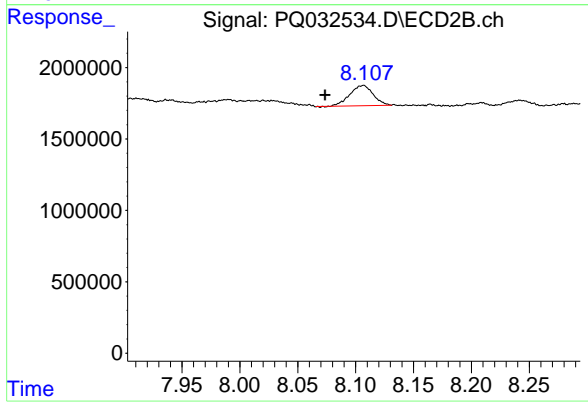
#42 AR-1268-2

R.T.: 7.817 min  
 Delta R.T.: -0.048 min  
 Response: 1066683  
 Conc: 4.02 ng/ml



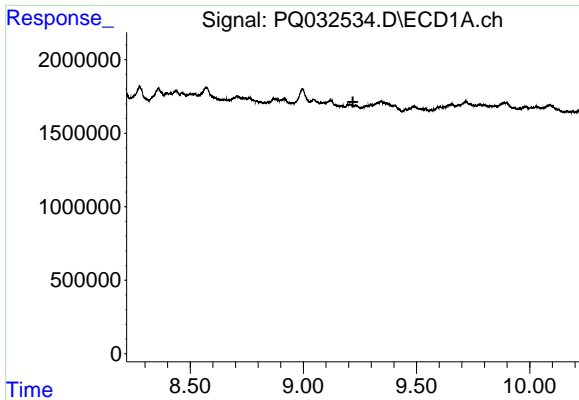
#43 AR-1268-3

R.T.: 0.000 min  
 Exp R.T. : 8.885 min  
 Response: 0  
 Conc: N.D.



#43 AR-1268-3

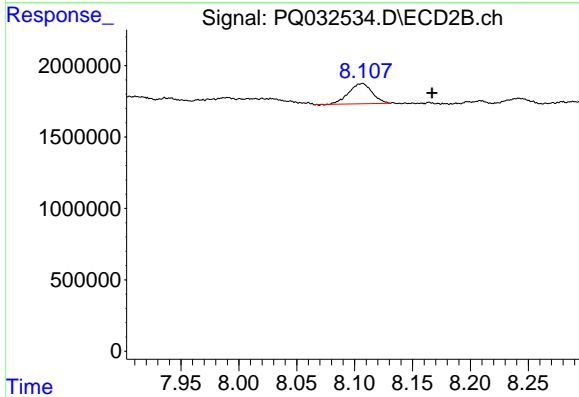
R.T.: 8.107 min  
 Delta R.T.: 0.033 min  
 Response: 1994935  
 Conc: 9.13 ng/ml



#44 AR-1268-4

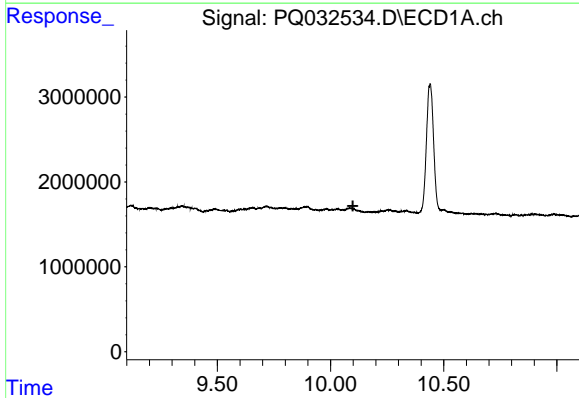
R.T.: 0.000 min  
 Exp R.T. : 9.219 min  
 Response: 0  
 Conc: N.D.

Instrument :  
 ECD\_Q  
 ClientSampled :



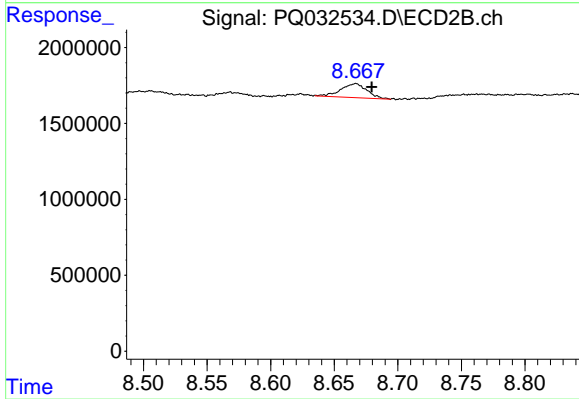
#44 AR-1268-4

R.T.: 8.107 min  
 Delta R.T.: -0.060 min  
 Response: 1994935  
 Conc: 34.73 ng/ml



#45 AR-1268-5

R.T.: 0.000 min  
 Exp R.T. : 10.099 min  
 Response: 0  
 Conc: N.D.



#45 AR-1268-5

R.T.: 8.667 min  
 Delta R.T.: -0.012 min  
 Response: 1337615  
 Conc: 1.88 ng/ml