

Data Path : Z:\pestpcbsrv\HPCHEM1\ECD_Q\Data\PQ100218\
 Data File : PQ032532.D
 Signal(s) : Signal #1: ECD1A.ch Signal #2: ECD2B.ch
 Acq On : 02 Oct 2018 22:45
 Operator : SM\SJ
 Sample : J5187-14
 Misc :
 ALS Vial : 25 Sample Multiplier: 1

Instrument :
 ECD_Q
ClientSampled :
 092818-DBRI-F-D-S

Manual Integrations
APPROVED
 Sohil
 10/3/2018 3:16:03 PM

Integration File signal 1: autoint1.e
 Integration File signal 2: autoint2.e
 Quant Time: Oct 03 02:12:49 2018
 Quant Method : Z:\pestpcbsrv\HPCHEM1\ECD_Q\Method\PQ091818.M
 Quant Title : GC EXTRACTABLES
 QLast Update : Wed Sep 19 02:07:33 2018
 Response via : Initial Calibration
 Integrator: ChemStation

Volume Inj. : 2 µl
 Signal #1 Phase : ZB-MR1 Signal #2 Phase: ZB-MR2
 Signal #1 Info : 30Mx0.32mmx 0.50µ Signal #2 Info : 30M x 0.32mm x 0.25µm

Compound	RT#1	RT#2	Resp#1	Resp#2	ng/ml	ng/ml

System Monitoring Compounds						
1) SA Tetrachlo...	4.588	3.867	38188770	33233301	16.470m	16.594m
2) SA Decachlor...	10.443	8.937	31859473	27476076	15.283m	14.189m

Target Compounds

(f)=RT Delta > 1/2 Window (#)=Amounts differ by > 25% (m)=manual int.

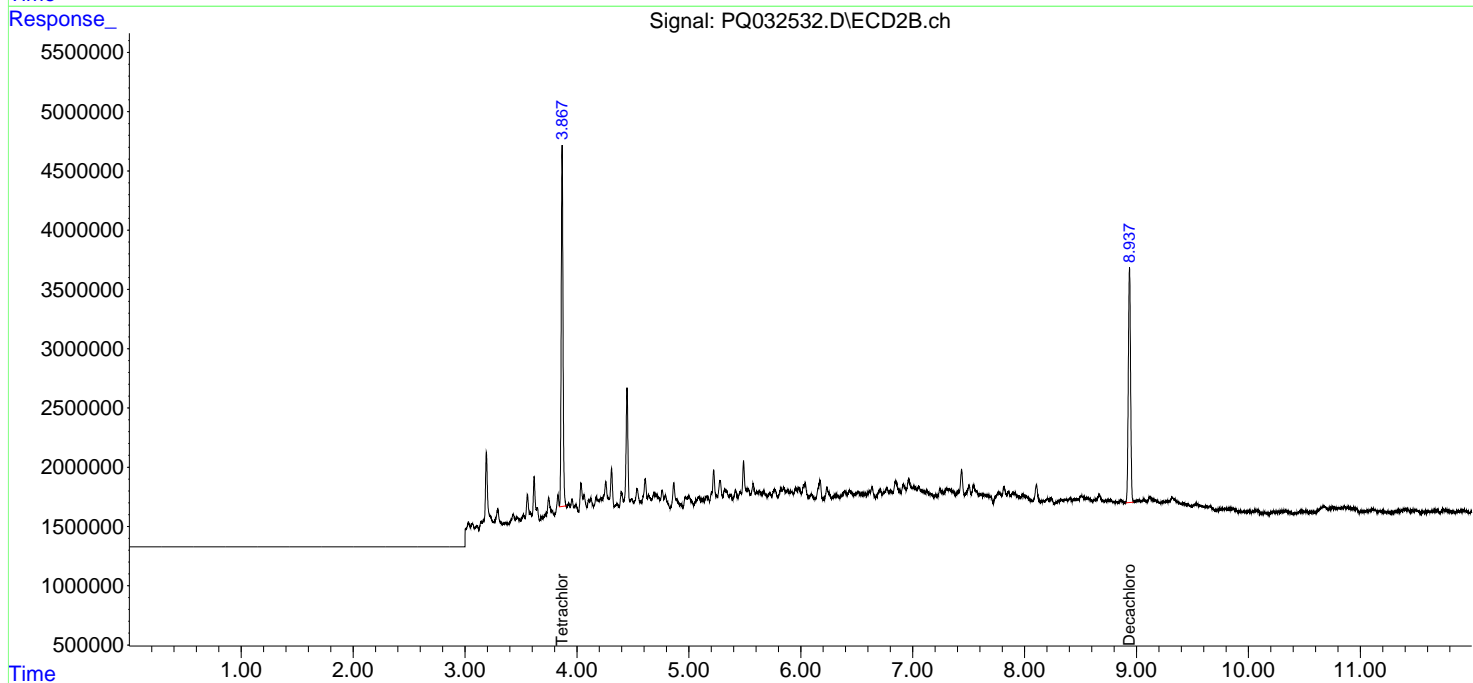
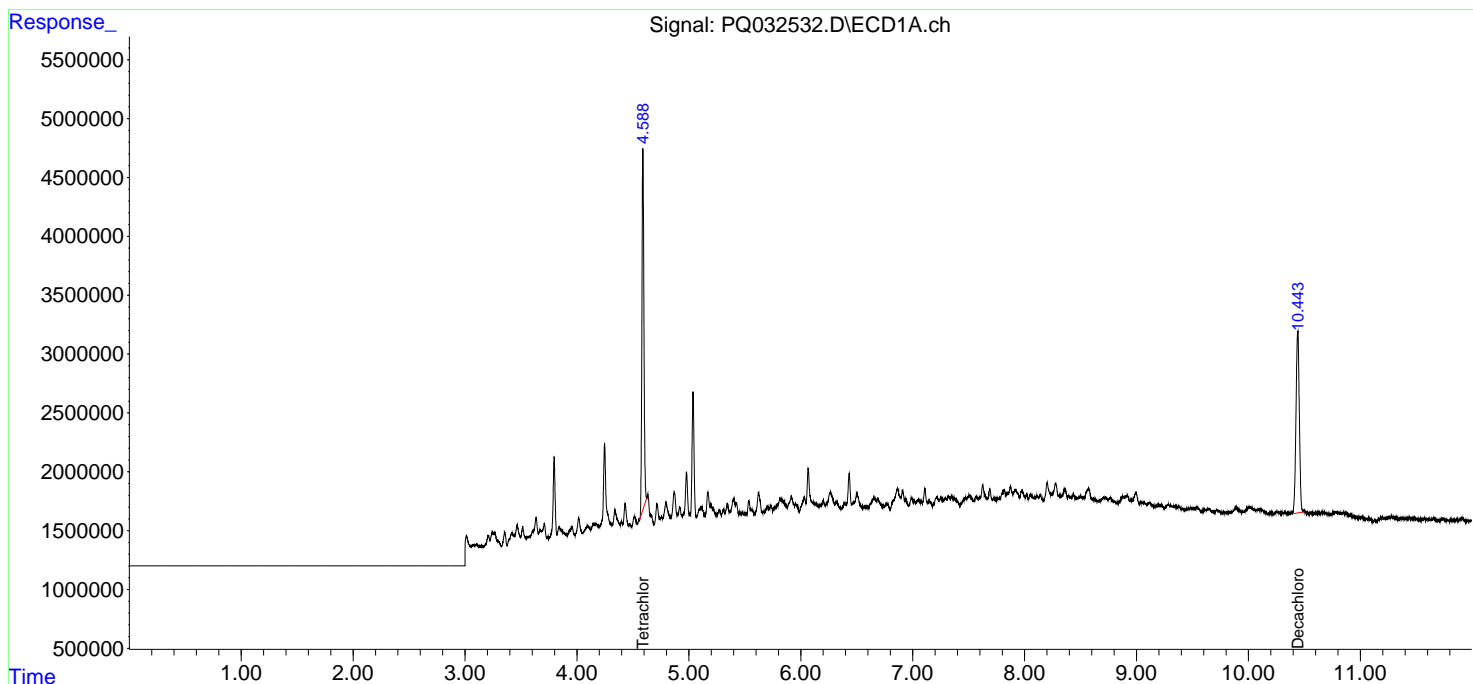
Data Path : Z:\pestpcbsrv\HPCHEM1\ECD_Q\Data\PQ100218\
 Data File : PQ032532.D
 Signal(s) : Signal #1: ECD1A.ch Signal #2: ECD2B.ch
 Acq On : 02 Oct 2018 22:45
 Operator : SM\SJ
 Sample : J5187-14
 Misc :
 ALS Vial : 25 Sample Multiplier: 1

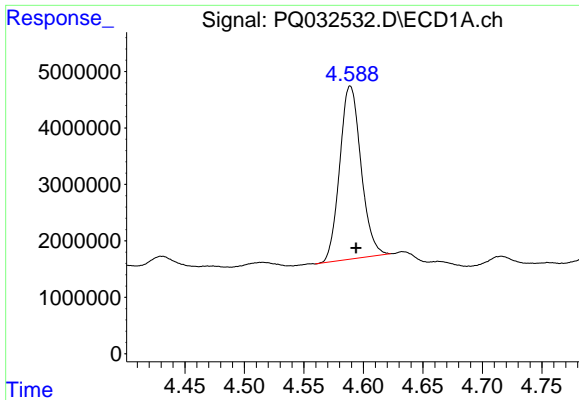
Instrument :
 ECD_Q
Client Sampled :
 092818-DBRI-F-D-S

Manual Integrations
APPROVED
 Sohil
 10/3/2018 3:16:03 PM

Integration File signal 1: autoint1.e
 Integration File signal 2: autoint2.e
 Quant Time: Oct 03 02:12:49 2018
 Quant Method : Z:\pestpcbsrv\HPCHEM1\ECD_Q\Method\PQ091818.M
 Quant Title : GC EXTRACTABLES
 QLast Update : Wed Sep 19 02:07:33 2018
 Response via : Initial Calibration
 Integrator: ChemStation

Volume Inj. : 2 µl
 Signal #1 Phase : ZB-MR1 Signal #2 Phase: ZB-MR2
 Signal #1 Info : 30Mx0.32mmx 0.50µ Signal #2 Info : 30M x 0.32mm x 0.25µm





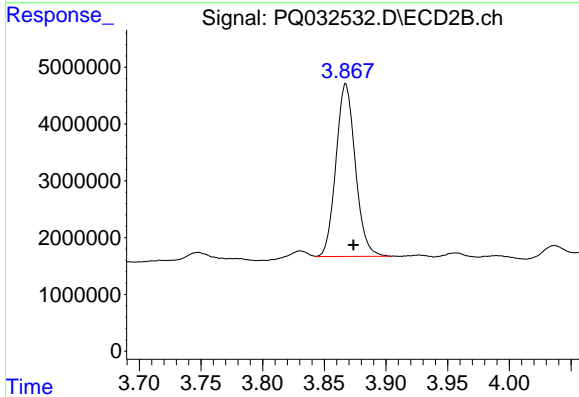
#1 Tetrachloro-m-xylene

R.T.: 4.588 min
 Delta R.T.: -0.006 min
 Response: 38188770
 Conc: 16.47 ng/ml m

Instrument :
 ECD_Q
 ClientSampleId :
 092818-DBRI-F-D-S

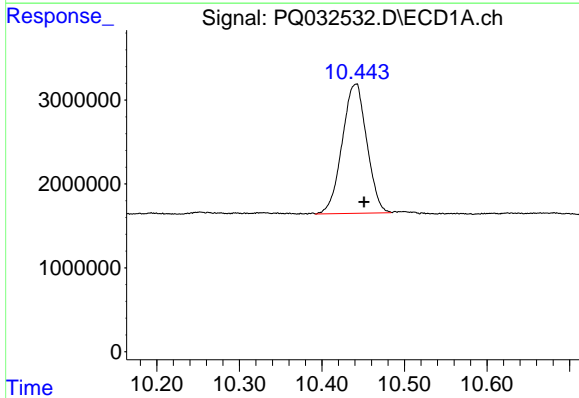
Manual Integrations
 APPROVED

Sohil
 10/3/2018 3:16:03 PM



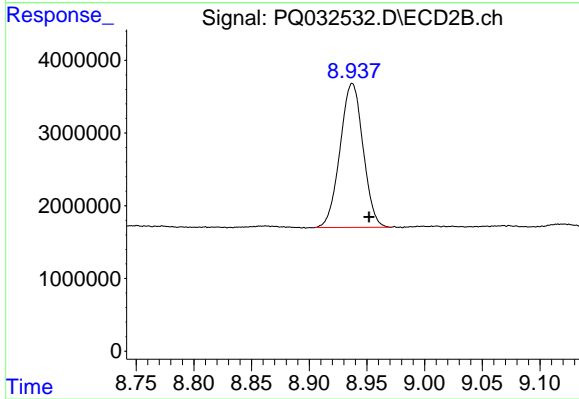
#1 Tetrachloro-m-xylene

R.T.: 3.867 min
 Delta R.T.: -0.007 min
 Response: 33233301
 Conc: 16.59 ng/ml m



#2 Decachlorobiphenyl

R.T.: 10.443 min
 Delta R.T.: -0.009 min
 Response: 31859473
 Conc: 15.28 ng/ml m



#2 Decachlorobiphenyl

R.T.: 8.937 min
 Delta R.T.: -0.015 min
 Response: 27476076
 Conc: 14.19 ng/ml m