

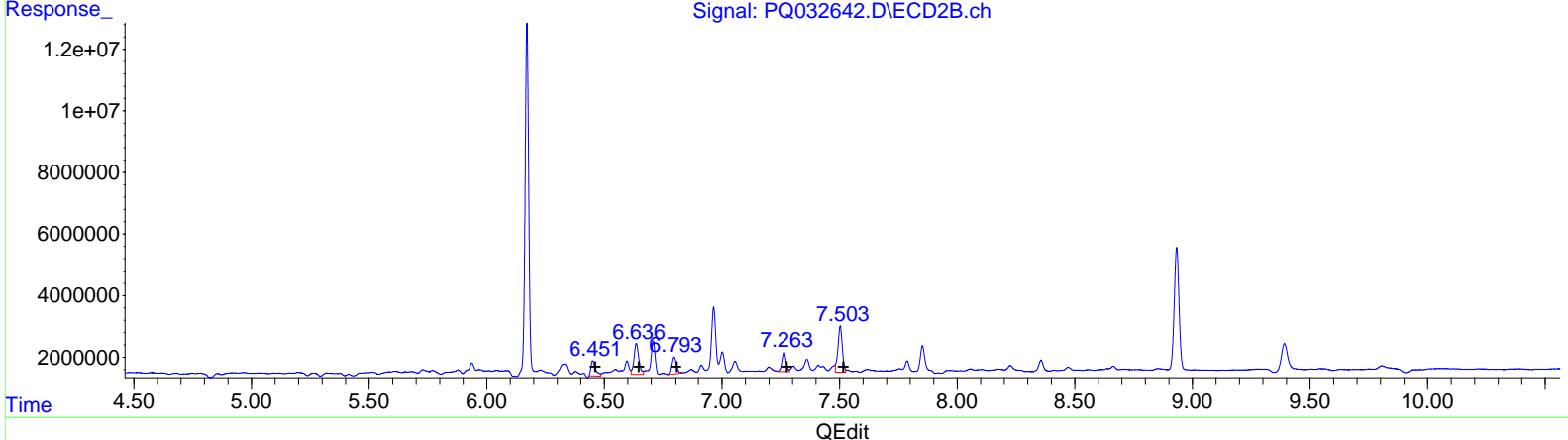
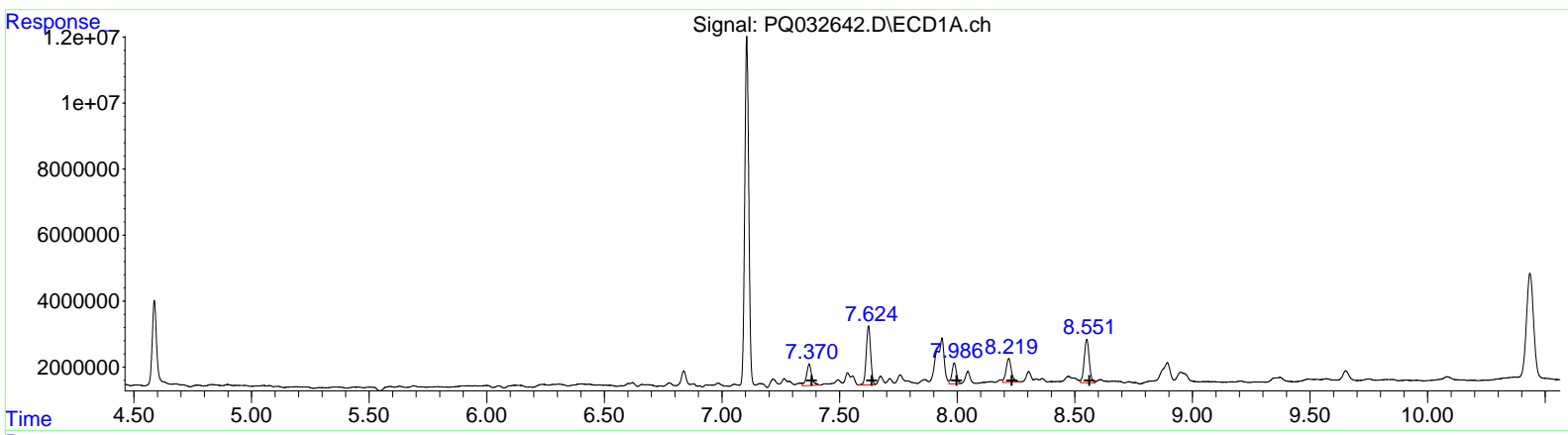
Data Path : Z:\pestpcbsrv\HPCHEM1\ECD\_Q\Data\PQ100418\  
 Data File : PQ032642.D  
 Signal(s) : Signal #1: ECD1A.ch Signal #2: ECD2B.ch  
 Acq On : 04 Oct 2018 20:44  
 Operator : SM\SJ  
 Sample : J5230-13  
 Misc :  
 ALS Vial : 21 Sample Multiplier: 1

**Instrument :**  
 ECD\_Q  
**ClientSampled :**  
 A3Z10

**Manual Integrations**  
**APPROVED**  
 Sohil  
 10/5/2018 10:26:26 AM

Integration File signal 1: autoint1.e  
 Integration File signal 2: autoint2.e  
 Quant Time: Oct 05 03:35:55 2018  
 Quant Method : Z:\pestpcbsrv\HPCHEM1\ECD\_Q\Method\PQ092618CLP.M  
 Quant Title : GC EXTRACTABLES  
 QLast Update : Thu Sep 27 08:45:59 2018  
 Response via : Initial Calibration  
 Integrator: ChemStation

Volume Inj. : 1 µl  
 Signal #1 Phase : ZB MR1 Signal #2 Phase: ZB MR2  
 Signal #1 Info : 30Mx0.32mmx 0.5µm Signal #2 Info : 30M x 0.32mm x 0.25µm



QEdit

(31) AR-1260-1 #2 (L7)	R.T.	Response	Conc
	7.37	9851522	83.28
	7.62	23292914	161.89
	7.99	8390618	80.33
	8.22	11559152	92.33
	8.55	19599766	75.85

(31) AR-1260-1 #2 (L7)	R.T.	Response	Conc
	6.45	6824259	62.51
	6.64	14431245	106.54
	6.79	7256600	57.57
	7.26	7723381	72.60
	7.50	19222444	72.35

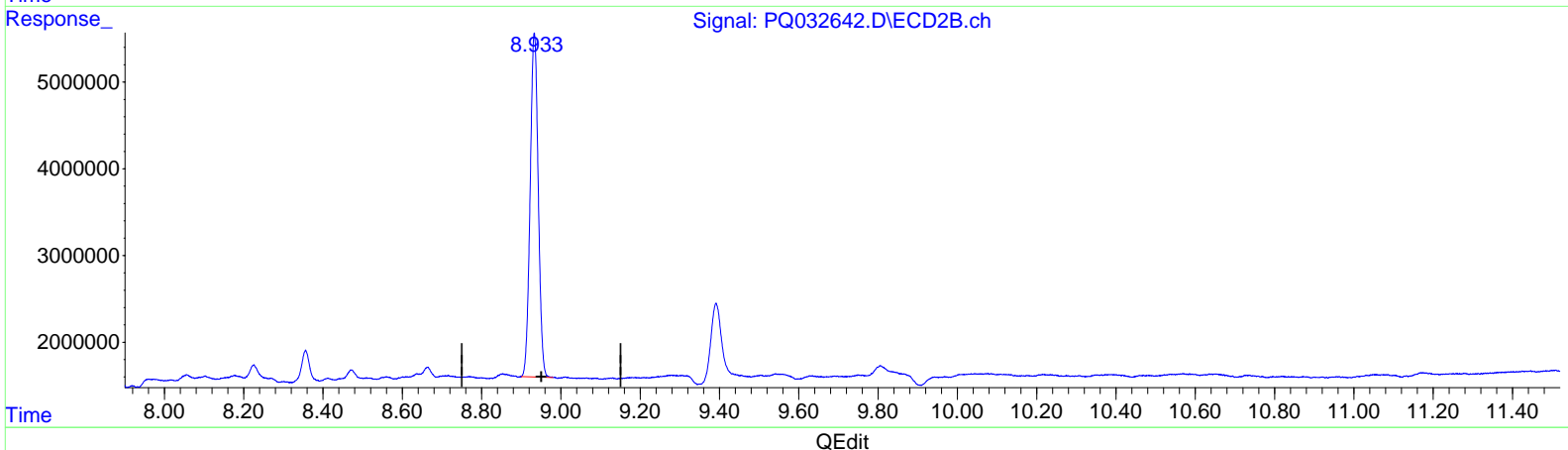
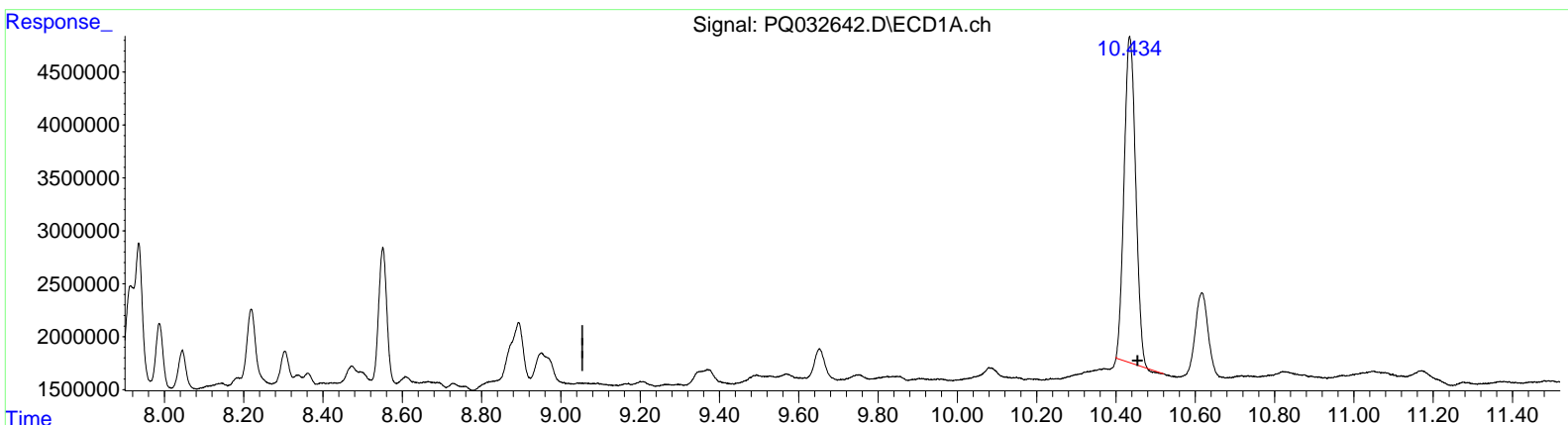
Data Path : Z:\pestpcbsrv\HPCHEM1\ECD\_Q\Data\PQ100418\  
 Data File : PQ032642.D  
 Signal(s) : Signal #1: ECD1A.ch Signal #2: ECD2B.ch  
 Acq On : 04 Oct 2018 20:44  
 Operator : SM\SJ  
 Sample : J5230-13  
 Misc :  
 ALS Vial : 21 Sample Multiplier: 1

**Instrument :**  
 ECD\_Q  
**Client Sampled :**  
 A3Z10

**Manual Integrations**  
**APPROVED**  
 Sohil  
 10/5/2018 10:26:26 AM

Integration File signal 1: autoint1.e  
 Integration File signal 2: autoint2.e  
 Quant Time: Oct 05 03:35:55 2018  
 Quant Method : Z:\pestpcbsrv\HPCHEM1\ECD\_Q\Method\PQ092618CLP.M  
 Quant Title : GC EXTRACTABLES  
 QLast Update : Thu Sep 27 08:45:59 2018  
 Response via : Initial Calibration  
 Integrator: ChemStation

Volume Inj. : 1 µl  
 Signal #1 Phase : ZB MR1 Signal #2 Phase: ZB MR2  
 Signal #1 Info : 30Mx0.32mmx 0.5µm Signal #2 Info : 30M x 0.32mm x 0.25µm



(2) Decachlorobiphenyl (SA)

10.435min 26.864 ng/ml

response 62125846

(2) Decachlorobiphenyl #2 (SA)

8.933min 27.997 ng/ml

response 56022418

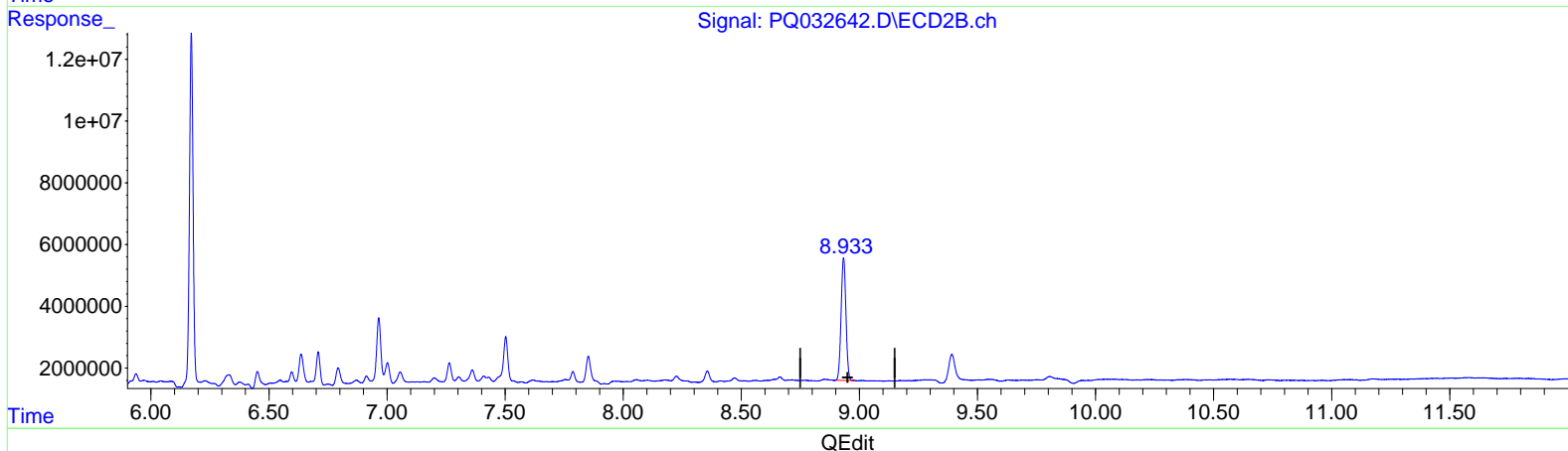
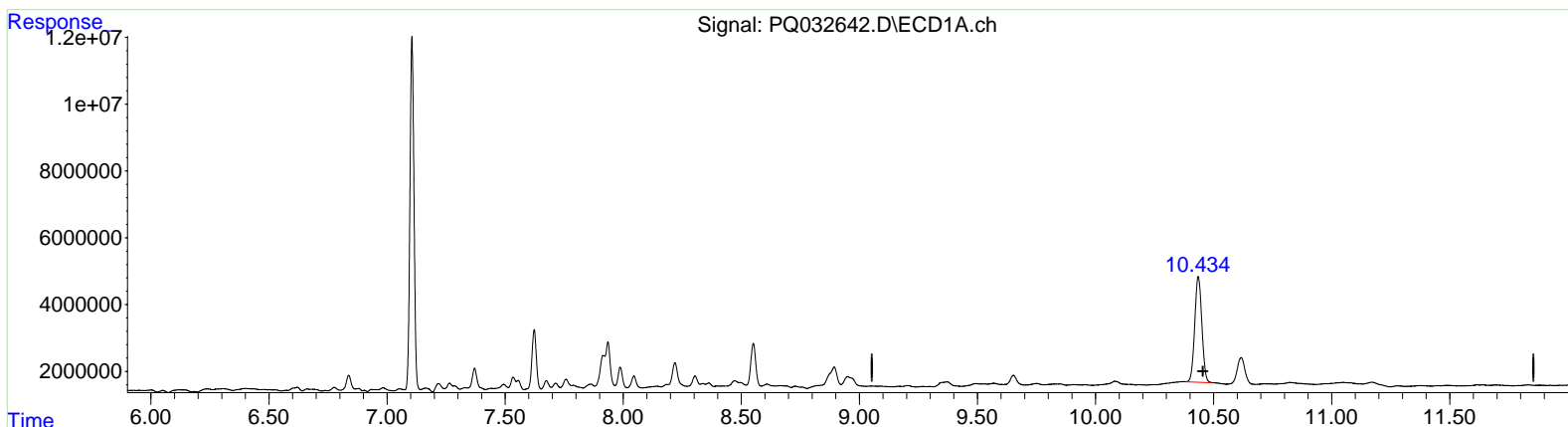
Data Path : Z:\pestpcbsrv\HPCHEM1\ECD\_Q\Data\PQ100418\  
 Data File : PQ032642.D  
 Signal(s) : Signal #1: ECD1A.ch Signal #2: ECD2B.ch  
 Acq On : 04 Oct 2018 20:44  
 Operator : SM\SJ  
 Sample : J5230-13  
 Misc :  
 ALS Vial : 21 Sample Multiplier: 1

**Instrument :**  
 ECD\_Q  
**ClientSampled :**  
 A3Z10

**Manual Integrations**  
**APPROVED**  
 Sohil  
 10/5/2018 10:26:26 AM

Integration File signal 1: autoint1.e  
 Integration File signal 2: autoint2.e  
 Quant Time: Oct 05 03:35:55 2018  
 Quant Method : Z:\pestpcbsrv\HPCHEM1\ECD\_Q\Method\PQ092618CLP.M  
 Quant Title : GC EXTRACTABLES  
 QLast Update : Thu Sep 27 08:45:59 2018  
 Response via : Initial Calibration  
 Integrator: ChemStation

Volume Inj. : 1 µl  
 Signal #1 Phase : ZB MR1 Signal #2 Phase: ZB MR2  
 Signal #1 Info : 30Mx0.32mmx 0.5µm Signal #2 Info : 30M x 0.32mm x 0.25µm



(2) Decachlorobiphenyl (SA)  
 10.434min 28.673 ng/ml m  
 response 66310492

(2) Decachlorobiphenyl #2 (SA)  
 8.933min 27.997 ng/ml  
 response 56022418

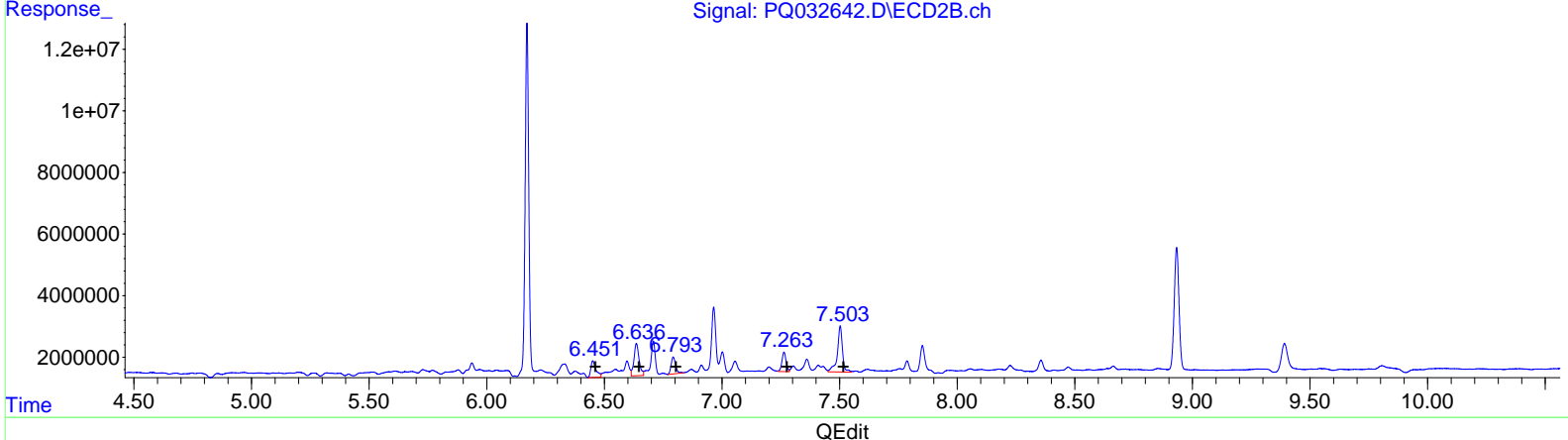
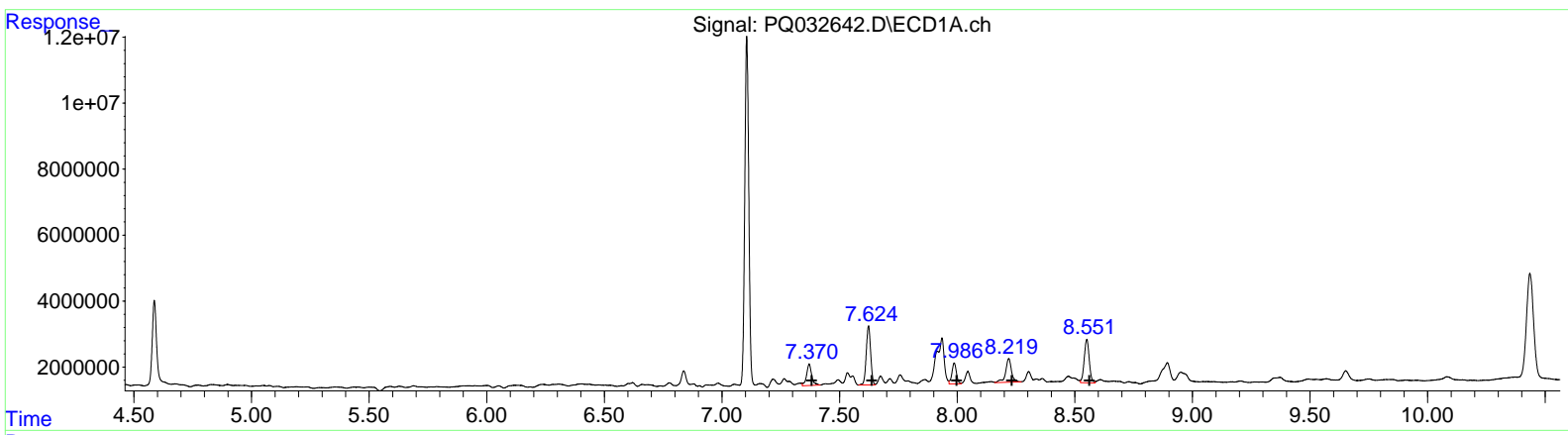
Data Path : Z:\pestpcbsrv\HPCHEM1\ECD\_Q\Data\PQ100418\  
 Data File : PQ032642.D  
 Signal(s) : Signal #1: ECD1A.ch Signal #2: ECD2B.ch  
 Acq On : 04 Oct 2018 20:44  
 Operator : SM\SJ  
 Sample : J5230-13  
 Misc :  
 ALS Vial : 21 Sample Multiplier: 1

**Instrument :**  
 ECD\_Q  
**ClientSampled :**  
 A3Z10

**Manual Integrations**  
**APPROVED**  
 Sohil  
 10/5/2018 10:26:26 AM

Integration File signal 1: autoint1.e  
 Integration File signal 2: autoint2.e  
 Quant Time: Oct 05 03:35:55 2018  
 Quant Method : Z:\pestpcbsrv\HPCHEM1\ECD\_Q\Method\PQ092618CLP.M  
 Quant Title : GC EXTRACTABLES  
 QLast Update : Thu Sep 27 08:45:59 2018  
 Response via : Initial Calibration  
 Integrator: ChemStation

Volume Inj. : 1 µl  
 Signal #1 Phase : ZB MR1 Signal #2 Phase: ZB MR2  
 Signal #1 Info : 30Mx0.32mmx 0.5µm Signal #2 Info : 30M x 0.32mm x 0.25µm



QEdit

(31) AR-1260-1 (L7)	R.T.	Response	Conc
	7.37	9851522	83.28
	7.62	23292914	161.89
	7.99	8390618	80.33
	8.22	12540151	100.16
	8.55	19599766	75.85

(31) AR-1260-1 #2 (L7)	R.T.	Response	Conc
	6.45	8242506	75.50
	6.64	15852010	117.03
	6.79	7256600	57.57
	7.26	7723381	72.60
	7.50	22641818	85.22

Quantitation Report (QT Reviewed)

Data Path : Z:\pestpcbsrv\HPCHEM1\ECD\_Q\Data\PQ100418\  
 Data File : PQ032642.D  
 Signal(s) : Signal #1: ECD1A.ch Signal #2: ECD2B.ch  
 Acq On : 04 Oct 2018 20:44  
 Operator : SM\SJ  
 Sample : J5230-13  
 Misc :  
 ALS Vial : 21 Sample Multiplier: 1

Instrument :  
 ECD\_Q  
 Client Sampled :  
 A3Z10

Manual Integrations  
 APPROVED

Sohil  
 10/5/2018 10:26:26 AM

Integration File signal 1: autoint1.e  
 Integration File signal 2: autoint2.e  
 Quant Time: Oct 05 03:35:55 2018  
 Quant Method : Z:\pestpcbsrv\HPCHEM1\ECD\_Q\Method\PQ092618CLP.M  
 Quant Title : GC EXTRACTABLES  
 QLast Update : Thu Sep 27 08:45:59 2018  
 Response via : Initial Calibration  
 Integrator: ChemStation

Volume Inj. : 1 µl  
 Signal #1 Phase : ZB MR1 Signal #2 Phase: ZB MR2  
 Signal #1 Info : 30Mx0.32mmx 0.5µm Signal #2 Info : 30M x 0.32mm x 0.25µm

Compound	RT#1	RT#2	Resp#1	Resp#2	ng/ml	ng/ml
-----						
System Monitoring Compounds						
1) SA Tetrachlo...	4.587	3.866	33602583	26178354	21.851	22.687
2) SA Decachlor...	10.434	8.933	66310492	56022418	28.673m )	27.997
Target Compounds						
31) L7 AR-1260-1	7.371	6.451	9851522	6824259	83.277	62.507m )
32) L7 AR-1260-2	7.623	6.636	23292914	14431245	161.895	106.537m# )
33) L7 AR-1260-3	7.987	6.793	8390618	7256600	80.331	57.567 # )
34) L7 AR-1260-4	8.219	7.264	11559152	7723381	92.327m )	72.600
35) L7 AR-1260-5	8.551	7.503	19599766	19222444	75.852	72.347m )
-----						

} SJ10/08/18

(f)=RT Delta > 1/2 Window (#)=Amounts differ by > 25% (m)=manual int.