

Data Path : Z:\pestpcbsrv\HPCHEM1\ECD_Q\Data\PQ100419\
 Data File : PQ044074.D
 Signal(s) : Signal #1: ECD1A.ch Signal #2: ECD2B.ch
 Acq On : 05 Oct 2019 04:12
 Operator : HP\AJ
 Sample : AR1254ICC400
 Misc :
 ALS Vial : 30 Sample Multiplier: 1

Instrument :
 ECD_Q
 ClientSampleId :
 AR1254301

Integration File signal 1: autoint1.e
 Integration File signal 2: autoint2.e
 Quant Time: Oct 05 05:12:19 2019
 Quant Method : Z:\pestpcbsrv\HPCHEM1\ECD_Q\Method\PQ100419CLP.M
 Quant Title : GC EXTRACTABLES
 QLast Update : Sat Oct 05 05:11:20 2019
 Response via : Initial Calibration
 Integrator: ChemStation

Volume Inj. : 1 µl
 Signal #1 Phase : ZB MR1 Signal #2 Phase: ZB MR2
 Signal #1 Info : 30Mx0.32mmx 0.5µm Signal #2 Info : 30M x 0.32mm x 0.25µm

Compound	RT#1	RT#2	Resp#1	Resp#2	ng/ml	ng/ml

System Monitoring Compounds						
1) SA Tetrachlo...	5.303	4.355	29346355	22746191	20.000	20.000
2) SA Decachlor...	11.577	9.797	171.8E6	137.5E6	40.000	40.000
Target Compounds						
26) L6 AR-1254-1	7.541	6.518	33798220	44408458	400.000	400.000
27) L6 AR-1254-2	7.772	6.675	56327813	40774876	400.000	400.000
28) L6 AR-1254-3	8.157	7.105	68129827	70257683	400.000	400.000
29) L6 AR-1254-4	8.454	7.344	58291813	45010329	400.000	400.000
30) L6 AR-1254-5	8.888	7.778	66534456	70057246	400.000	400.000

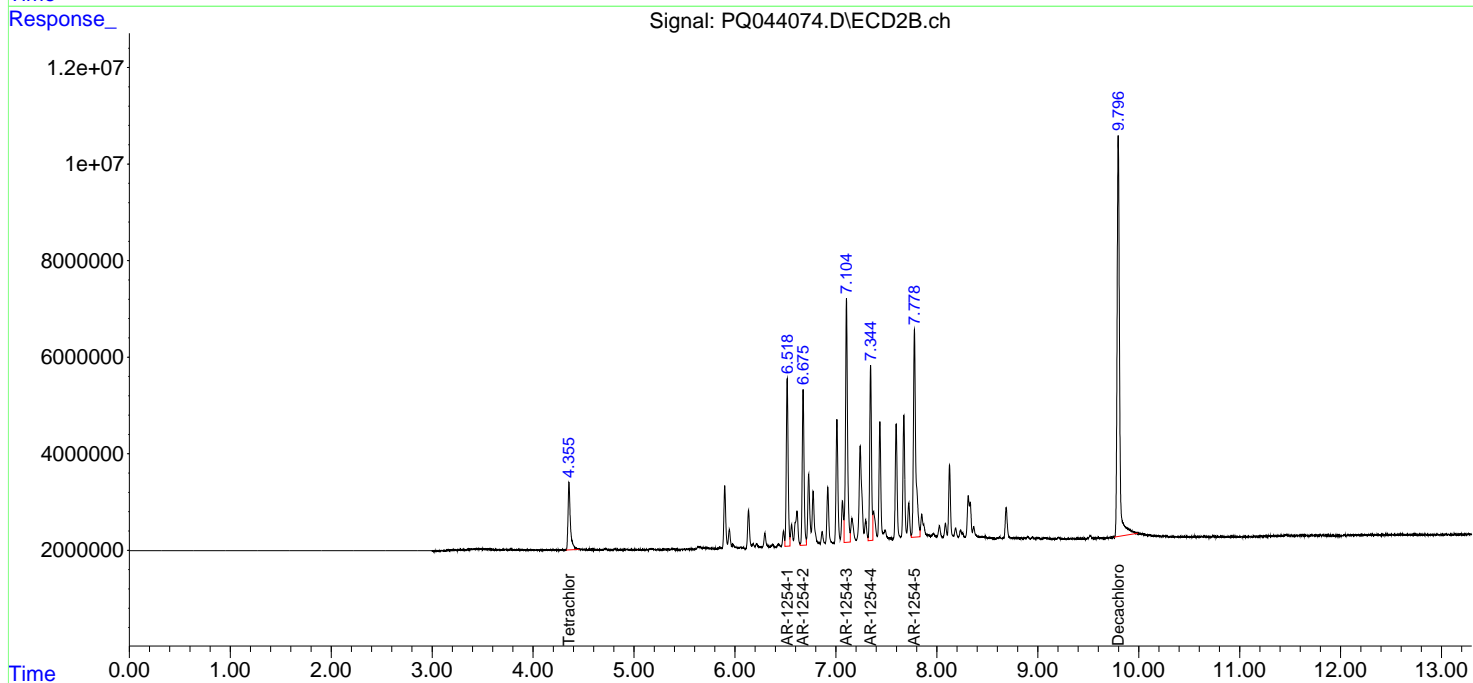
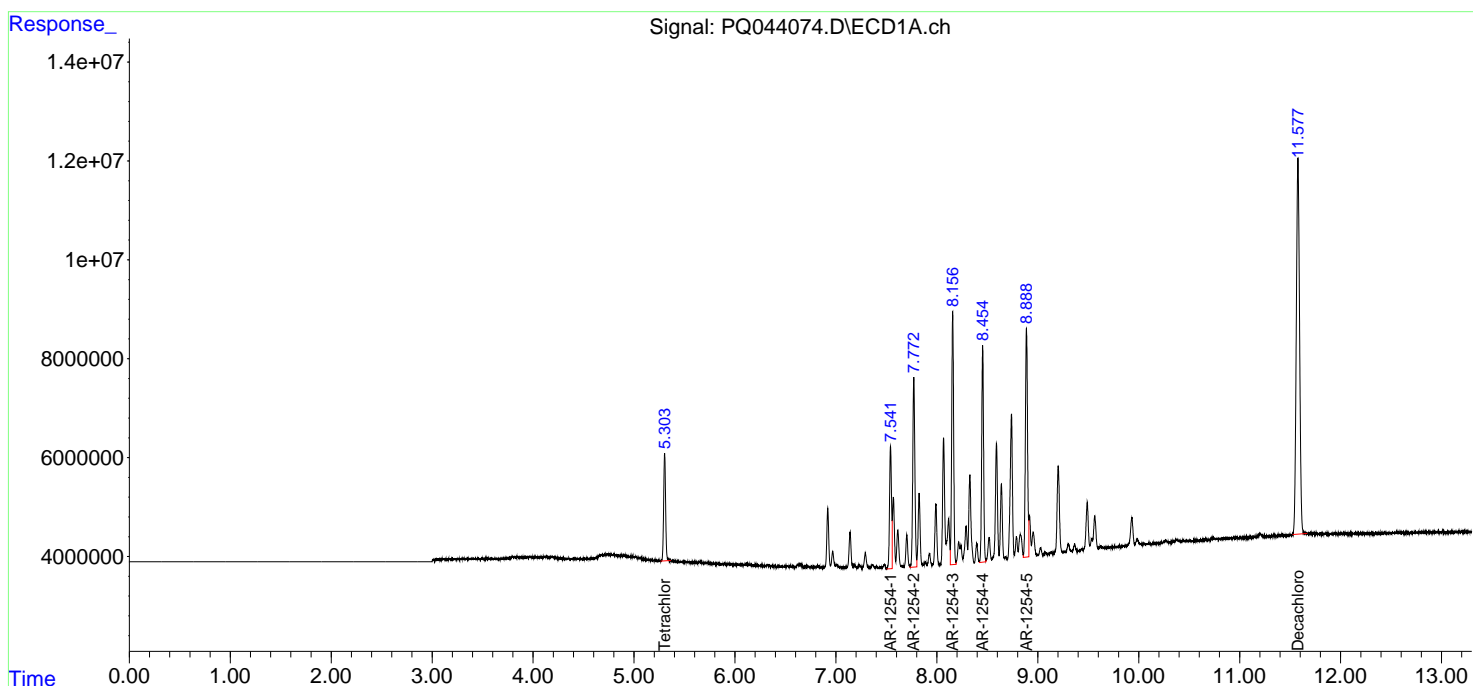
(f)=RT Delta > 1/2 Window (#)=Amounts differ by > 25% (m)=manual int.

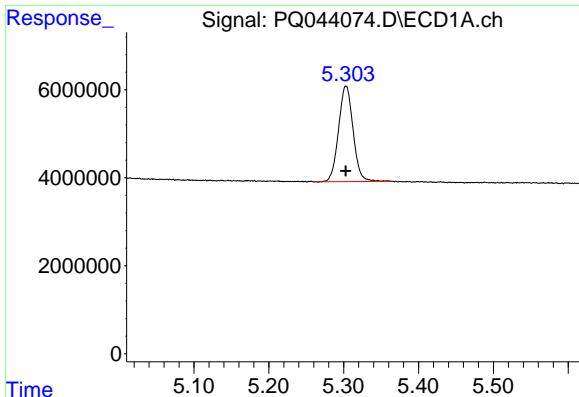
Data Path : Z:\pestpcbsrv\HPCHEM1\ECD_Q\Data\PQ100419\
 Data File : PQ044074.D
 Signal(s) : Signal #1: ECD1A.ch Signal #2: ECD2B.ch
 Acq On : 05 Oct 2019 04:12
 Operator : HP\AJ
 Sample : AR1254ICC400
 Misc :
 ALS Vial : 30 Sample Multiplier: 1

Instrument :
 ECD_Q
 ClientSampled :
 AR1254301

Integration File signal 1: autoint1.e
 Integration File signal 2: autoint2.e
 Quant Time: Oct 05 05:12:19 2019
 Quant Method : Z:\pestpcbsrv\HPCHEM1\ECD_Q\Method\PQ100419CLP.M
 Quant Title : GC EXTRACTABLES
 QLast Update : Sat Oct 05 05:11:20 2019
 Response via : Initial Calibration
 Integrator: ChemStation

Volume Inj. : 1 µl
 Signal #1 Phase : ZB MR1 Signal #2 Phase: ZB MR2
 Signal #1 Info : 30Mx0.32mmx 0.5µm Signal #2 Info : 30M x 0.32mm x 0.25µm

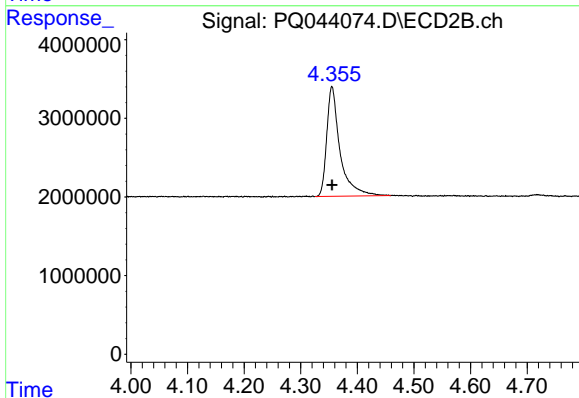




#1 Tetrachloro-m-xylene

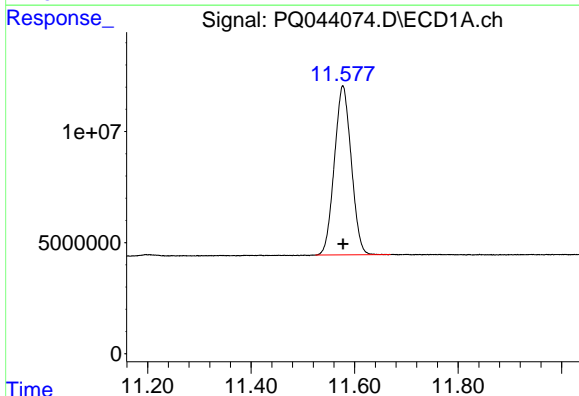
R.T.: 5.303 min
 Delta R.T.: 0.000 min
 Response: 29346355
 Conc: 20.00 ng/ml

Instrument :
 ECD_Q
 ClientSampleId :
 AR1254301



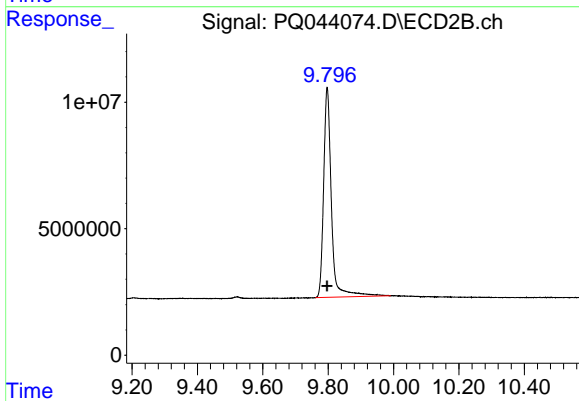
#1 Tetrachloro-m-xylene

R.T.: 4.355 min
 Delta R.T.: 0.000 min
 Response: 22746191
 Conc: 20.00 ng/ml



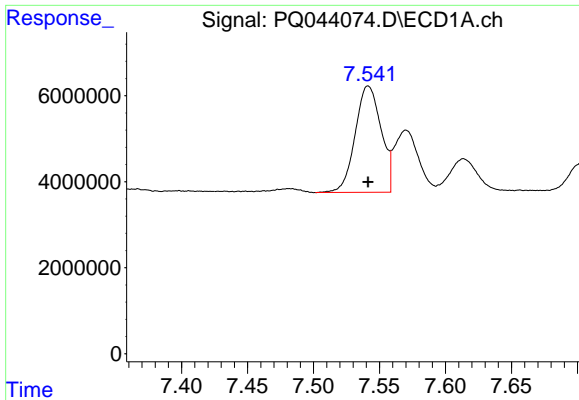
#2 Decachlorobiphenyl

R.T.: 11.577 min
 Delta R.T.: 0.000 min
 Response: 171811665
 Conc: 40.00 ng/ml



#2 Decachlorobiphenyl

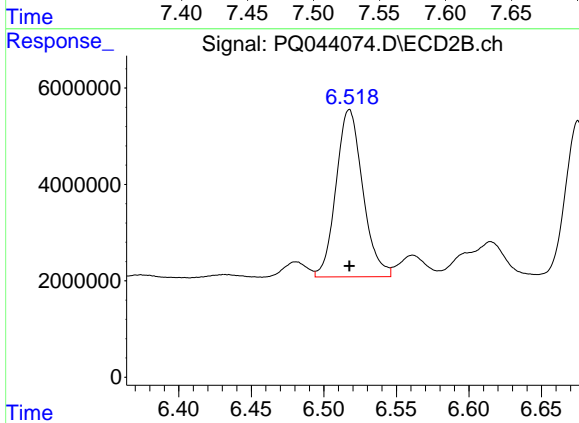
R.T.: 9.797 min
 Delta R.T.: 0.000 min
 Response: 137514873
 Conc: 40.00 ng/ml



#26 AR-1254-1

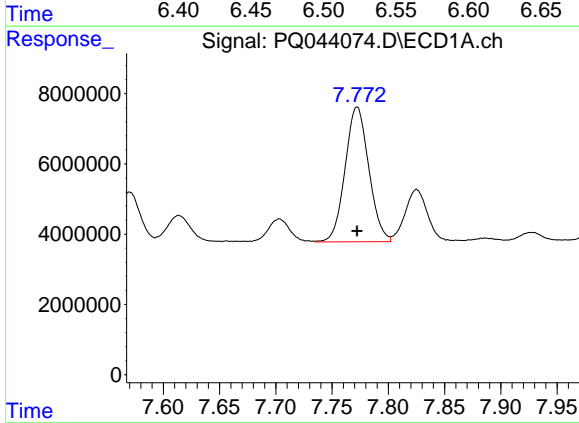
R.T.: 7.541 min
Delta R.T.: 0.000 min
Response: 33798220
Conc: 400.00 ng/ml

Instrument :
ECD_Q
ClientSampleId :
AR1254301



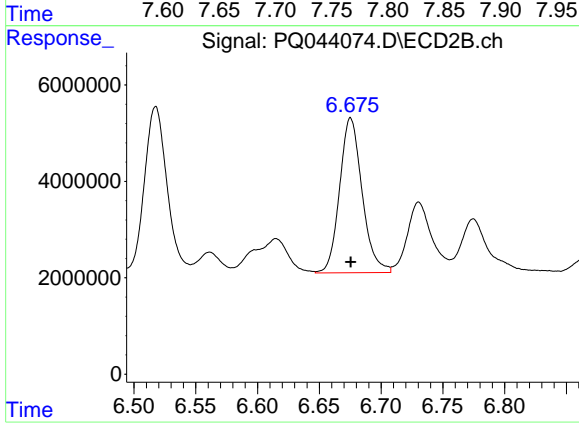
#26 AR-1254-1

R.T.: 6.518 min
Delta R.T.: 0.000 min
Response: 44408458
Conc: 400.00 ng/ml



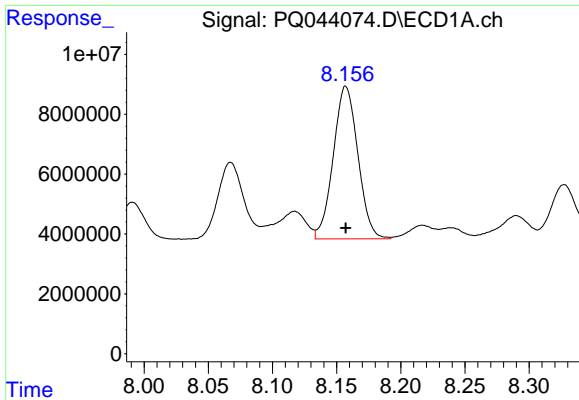
#27 AR-1254-2

R.T.: 7.772 min
Delta R.T.: 0.000 min
Response: 56327813
Conc: 400.00 ng/ml



#27 AR-1254-2

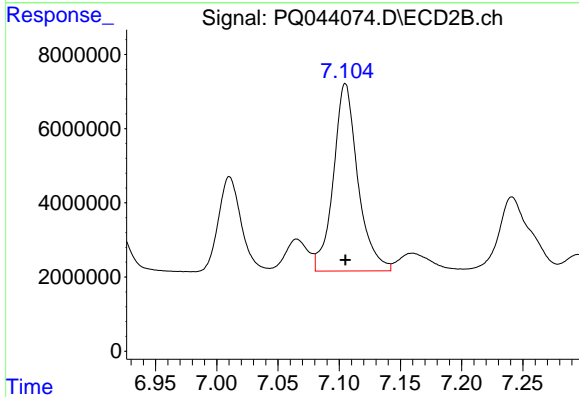
R.T.: 6.675 min
Delta R.T.: 0.000 min
Response: 40774876
Conc: 400.00 ng/ml



#28 AR-1254-3

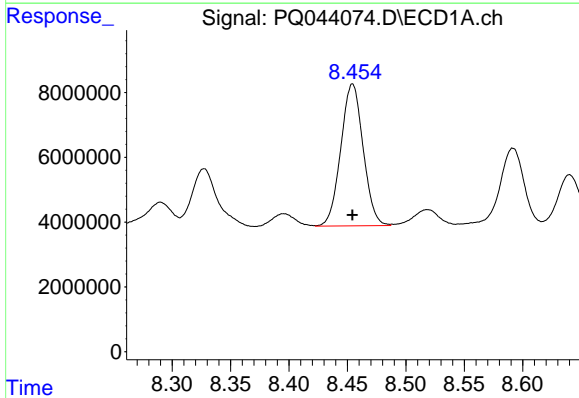
R.T.: 8.157 min
 Delta R.T.: 0.000 min
 Response: 68129827
 Conc: 400.00 ng/ml

Instrument :
 ECD_Q
 ClientSampleId :
 AR1254301



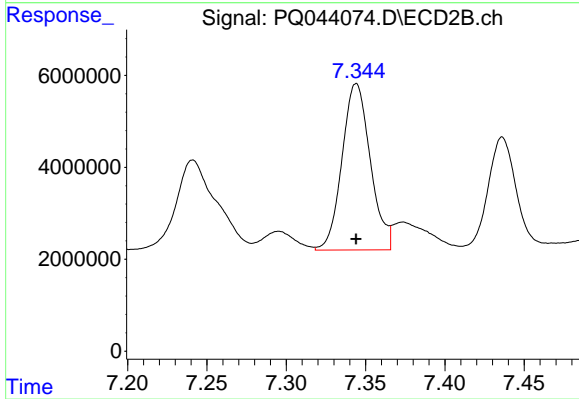
#28 AR-1254-3

R.T.: 7.105 min
 Delta R.T.: 0.000 min
 Response: 70257683
 Conc: 400.00 ng/ml



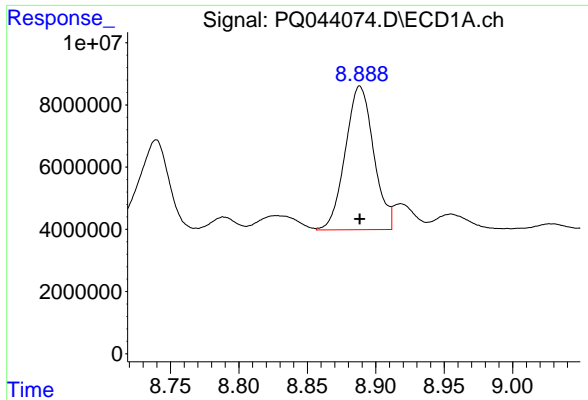
#29 AR-1254-4

R.T.: 8.454 min
 Delta R.T.: 0.000 min
 Response: 58291813
 Conc: 400.00 ng/ml



#29 AR-1254-4

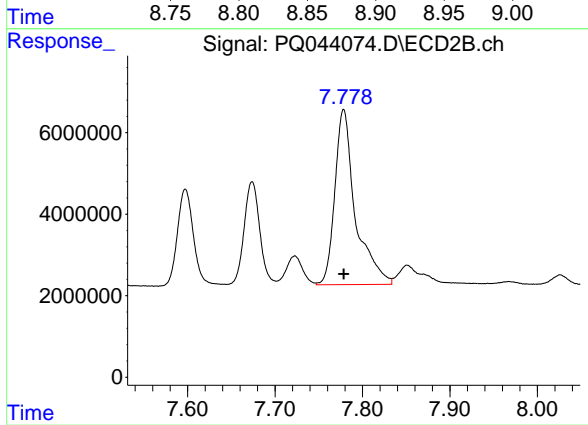
R.T.: 7.344 min
 Delta R.T.: 0.000 min
 Response: 45010329
 Conc: 400.00 ng/ml



#30 AR-1254-5

R.T.: 8.888 min
Delta R.T.: 0.000 min
Response: 66534456
Conc: 400.00 ng/ml

Instrument :
ECD_Q
ClientSampled :
AR1254301



#30 AR-1254-5

R.T.: 7.778 min
Delta R.T.: 0.000 min
Response: 70057246
Conc: 400.00 ng/ml