

Data Path : Z:\pestpcbsrv\HPCHEM1\ECD_Q\Data\PQ100520\
 Data File : PQ050160.D
 Signal(s) : Signal #1: ECD1A.ch Signal #2: ECD2B.ch
 Acq On : 05 Oct 2020 12:25
 Operator : DD\AJ
 Sample : L4185-01
 Misc :
 ALS Vial : 15 Sample Multiplier: 1

Instrument :
 ECD_Q
 ClientSampleId :

Integration File signal 1: autoint1.e
 Integration File signal 2: autoint2.e
 Quant Time: Oct 06 04:32:22 2020
 Quant Method : Z:\pestpcbsrv\HPCHEM1\ECD_Q\Method\PQ092420CLP.M
 Quant Title : GC EXTRACTABLES
 QLast Update : Thu Sep 24 08:00:48 2020
 Response via : Initial Calibration
 Integrator: ChemStation

Volume Inj. : 1 µl
 Signal #1 Phase : ZB MR2 Signal #2 Phase: ZB MR2
 Signal #1 Info : 30Mx0.32mmx 0.5µm Signal #2 Info : 30M x 0.32mm x 0.25µm

Compound	RT#1	RT#2	Resp#1	Resp#2	ng/ml	ng/ml

System Monitoring Compounds						
1) SA Tetrachlo...	5.211	4.271	197.3E6	67984395	19.930	19.286
2) SA Decachlor...	11.402	9.620	242.6E6	210.0E6	35.742	39.038
Target Compounds						
9) L2 AR-1221-2	5.568	0.000	4131843	0	49.081	N.D. #
12) L3 AR-1232-2	6.299f	0.000	4642635	0	43.684	N.D. #
20) L4 AR-1242-5	7.488f	0.000	6882472	0	35.729	N.D. #
24) L5 AR-1248-4	7.488	0.000	6882472	0	20.576	N.D. #
25) L5 AR-1248-5	7.488f	0.000	6882472	0	21.863	N.D. #
26) L6 AR-1254-1	7.488	0.000	6882472	0	20.865	N.D. #
31) L7 AR-1260-1	8.183f	0.000	4865344	0	14.939	N.D. #

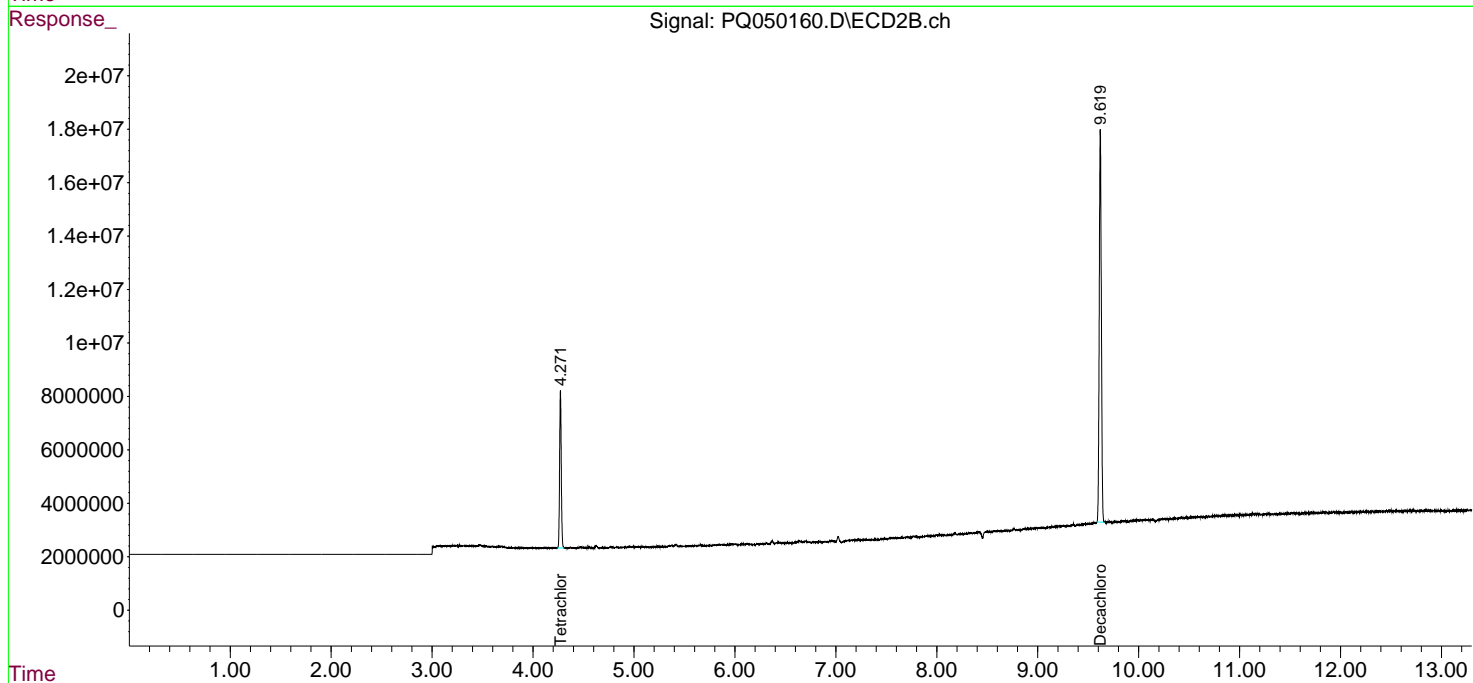
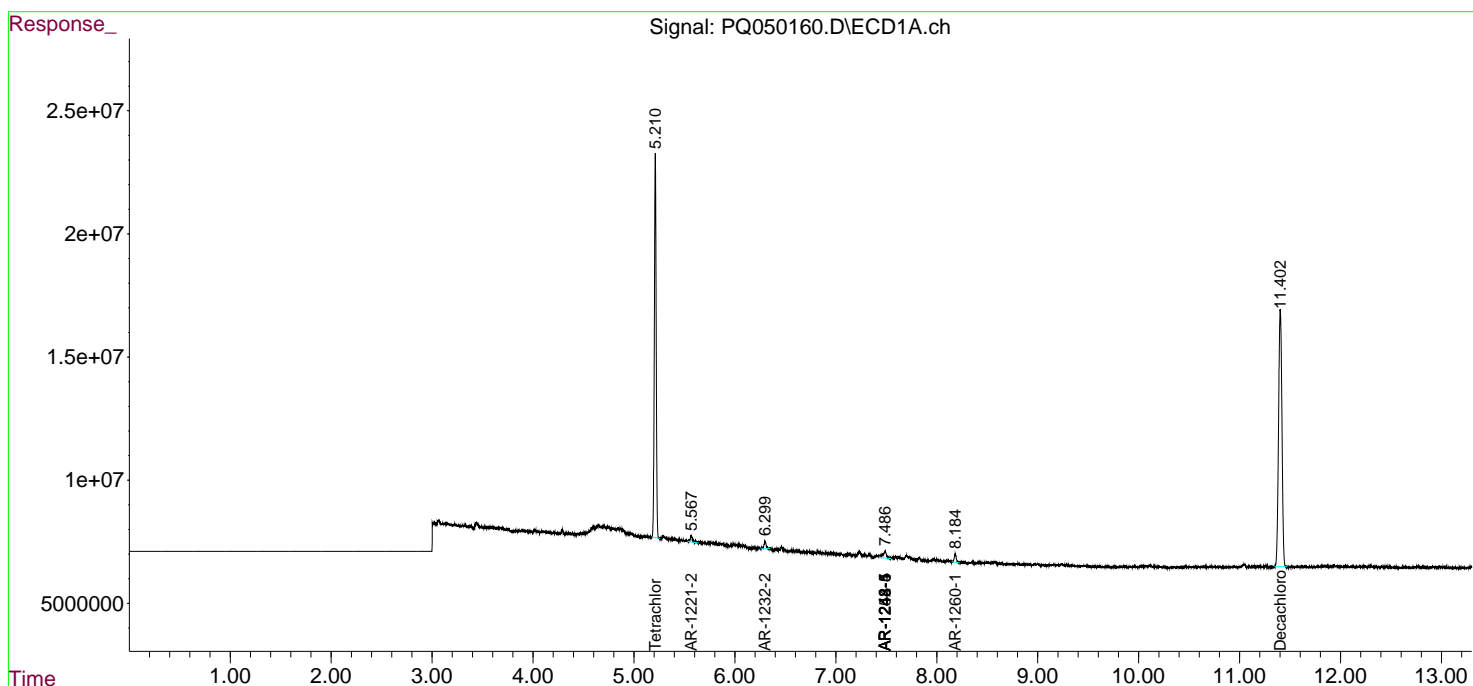
(f)=RT Delta > 1/2 Window (#)=Amounts differ by > 25% (m)=manual int.

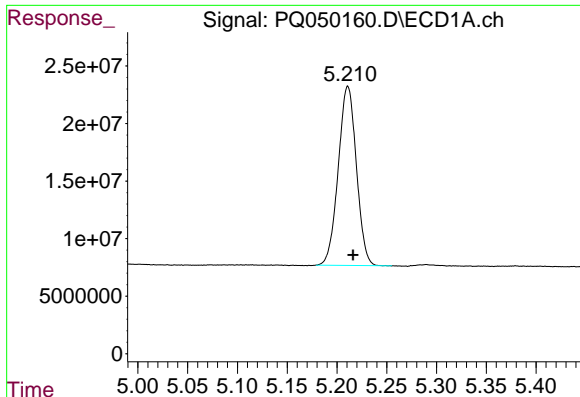
Data Path : Z:\pestpcbsrv\HPCHEM1\ECD_Q\Data\PQ100520\
 Data File : PQ050160.D
 Signal(s) : Signal #1: ECD1A.ch Signal #2: ECD2B.ch
 Acq On : 05 Oct 2020 12:25
 Operator : DD\AJ
 Sample : L4185-01
 Misc :
 ALS Vial : 15 Sample Multiplier: 1

Instrument :
 ECD_Q
 ClientSampled :

Integration File signal 1: autoint1.e
 Integration File signal 2: autoint2.e
 Quant Time: Oct 06 04:32:22 2020
 Quant Method : Z:\pestpcbsrv\HPCHEM1\ECD_Q\Method\PQ092420CLP.M
 Quant Title : GC EXTRACTABLES
 QLast Update : Thu Sep 24 08:00:48 2020
 Response via : Initial Calibration
 Integrator: ChemStation

Volume Inj. : 1 µl
 Signal #1 Phase : ZB MR1 Signal #2 Phase: ZB MR2
 Signal #1 Info : 30Mx0.32mmx 0.5µm Signal #2 Info : 30M x 0.32mm x 0.25µm

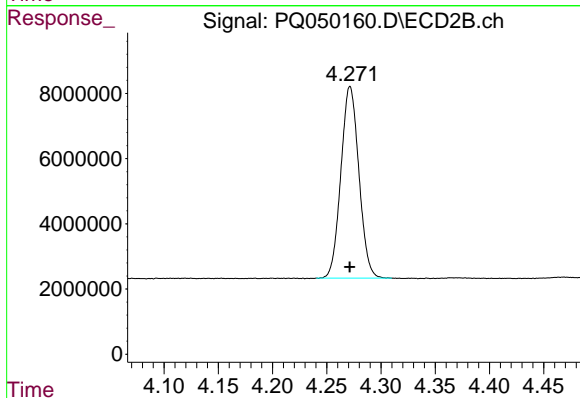




#1 Tetrachloro-m-xylene

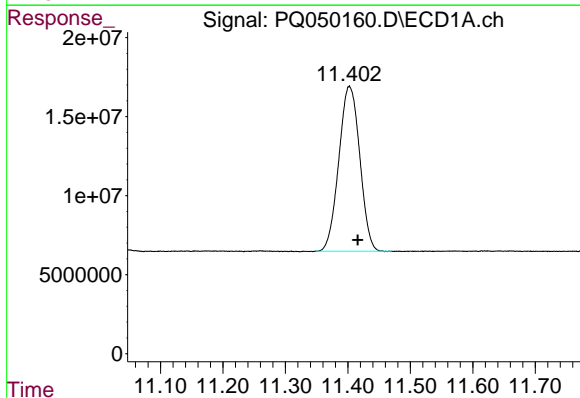
R.T.: 5.211 min
 Delta R.T.: -0.005 min
 Response: 197296497
 Conc: 19.93 ng/ml

Instrument :
 ECD_Q
 ClientSampled :



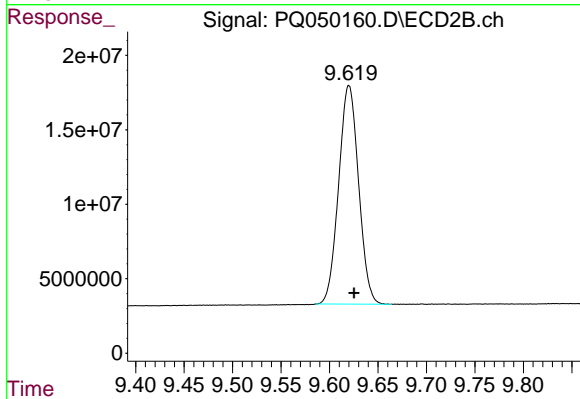
#1 Tetrachloro-m-xylene

R.T.: 4.271 min
 Delta R.T.: 0.000 min
 Response: 67984395
 Conc: 19.29 ng/ml



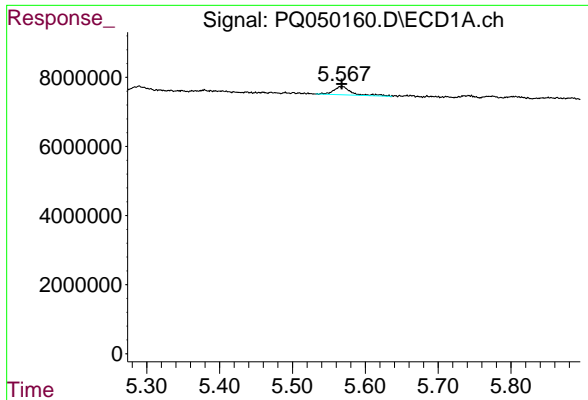
#2 Decachlorobiphenyl

R.T.: 11.402 min
 Delta R.T.: -0.014 min
 Response: 242648643
 Conc: 35.74 ng/ml



#2 Decachlorobiphenyl

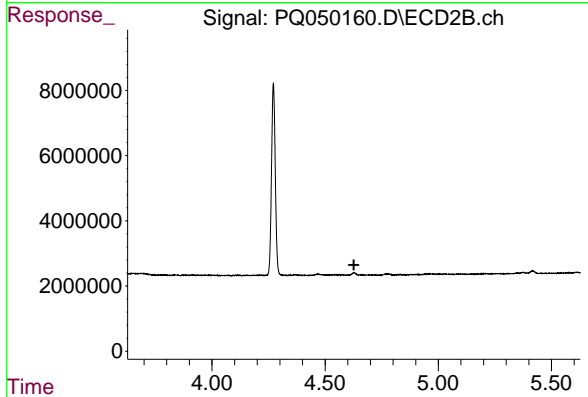
R.T.: 9.620 min
 Delta R.T.: -0.005 min
 Response: 209980751
 Conc: 39.04 ng/ml



#9 AR-1221-2

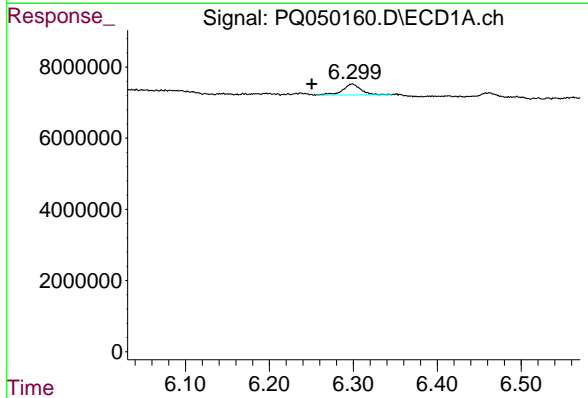
R.T.: 5.568 min
 Delta R.T.: 0.000 min
 Response: 4131843
 Conc: 49.08 ng/ml

Instrument :
 ECD_Q
 ClientSampleId :



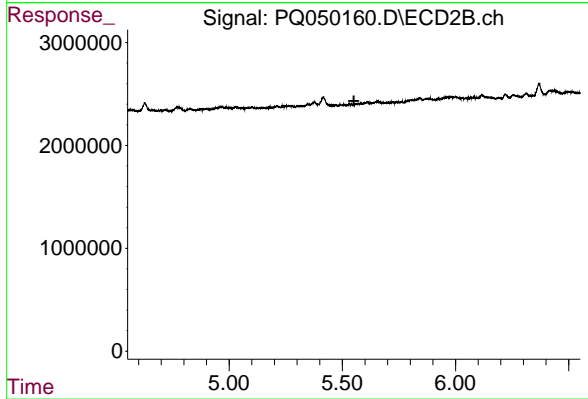
#9 AR-1221-2

R.T.: 0.000 min
 Exp R.T. : 4.627 min
 Response: 0
 Conc: N.D.



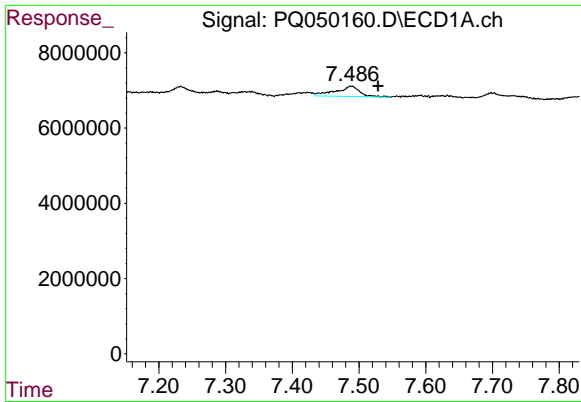
#12 AR-1232-2

R.T.: 6.299 min
 Delta R.T.: 0.048 min
 Response: 4642635
 Conc: 43.68 ng/ml



#12 AR-1232-2

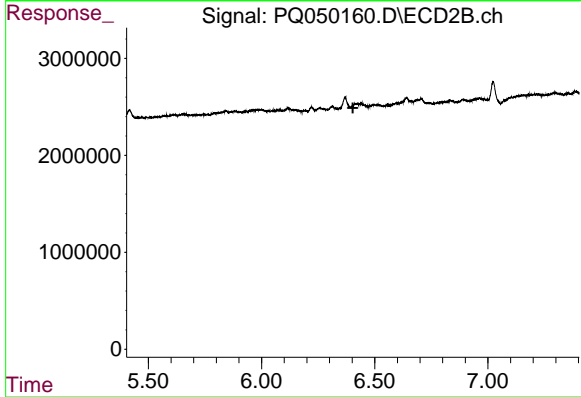
R.T.: 0.000 min
 Exp R.T. : 5.551 min
 Response: 0
 Conc: N.D.



#20 AR-1242-5

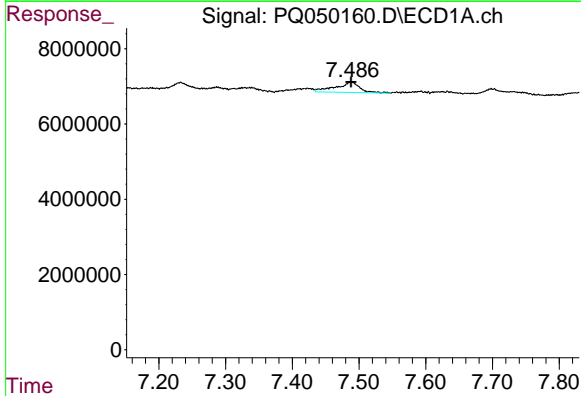
R.T.: 7.488 min
 Delta R.T.: -0.041 min
 Response: 6882472
 Conc: 35.73 ng/ml

Instrument :
 ECD_Q
 ClientSampleId :



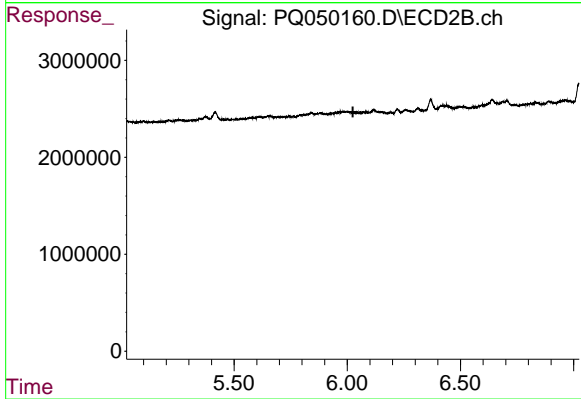
#20 AR-1242-5

R.T.: 0.000 min
 Exp R.T. : 6.403 min
 Response: 0
 Conc: N.D.



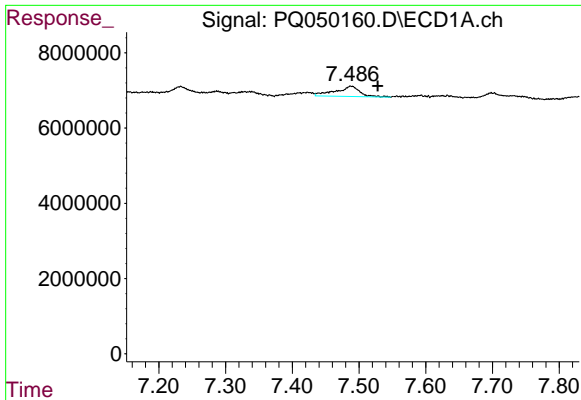
#24 AR-1248-4

R.T.: 7.488 min
 Delta R.T.: 0.000 min
 Response: 6882472
 Conc: 20.58 ng/ml



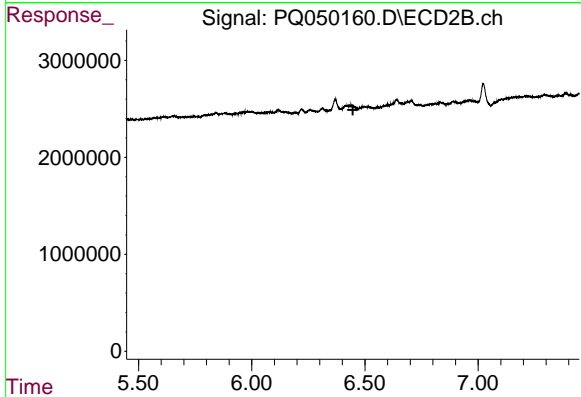
#24 AR-1248-4

R.T.: 0.000 min
 Exp R.T. : 6.025 min
 Response: 0
 Conc: N.D.

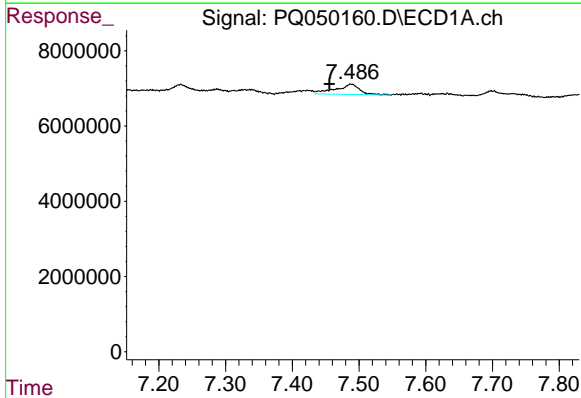


#25 AR-1248-5
 R.T.: 7.488 min
 Delta R.T.: -0.040 min
 Response: 6882472
 Conc: 21.86 ng/ml

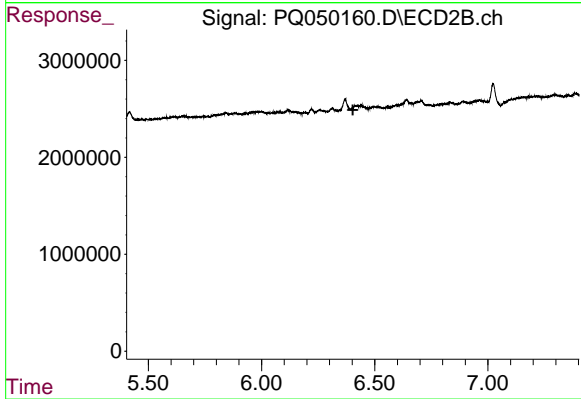
Instrument :
 ECD_Q
 ClientSampleId :



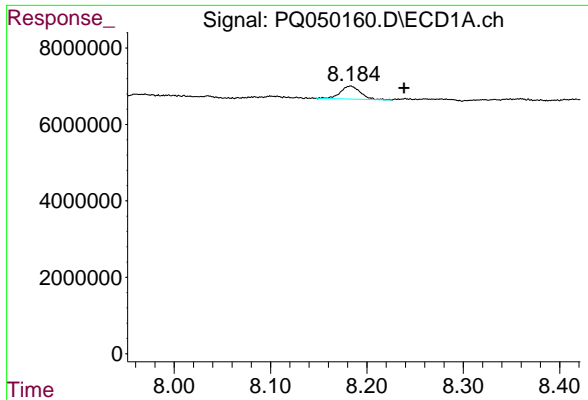
#25 AR-1248-5
 R.T.: 0.000 min
 Exp R.T. : 6.447 min
 Response: 0
 Conc: N.D.



#26 AR-1254-1
 R.T.: 7.488 min
 Delta R.T.: 0.032 min
 Response: 6882472
 Conc: 20.87 ng/ml



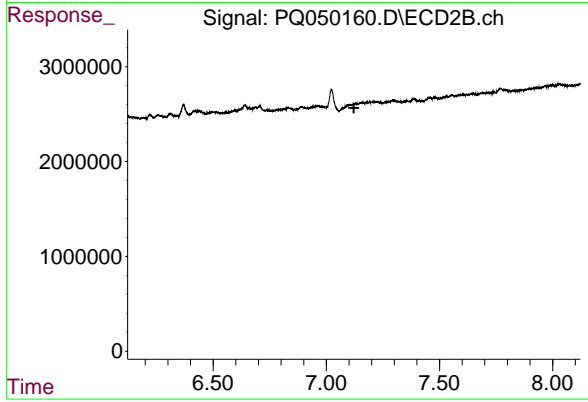
#26 AR-1254-1
 R.T.: 0.000 min
 Exp R.T. : 6.403 min
 Response: 0
 Conc: N.D.



#31 AR-1260-1

R.T.: 8.183 min
Delta R.T.: -0.055 min
Response: 4865344
Conc: 14.94 ng/ml

Instrument :
ECD_Q
ClientSampleId :



#31 AR-1260-1

R.T.: 0.000 min
Exp R.T. : 7.122 min
Response: 0
Conc: N.D.