

Data Path : Z:\pestpcbsrv\HPCHEM1\ECD_Q\Data\PQ100724\
 Data File : PQ069000.D
 Signal(s) : Signal #1: ECD1A.ch Signal #2: ECD2B.ch
 Acq On : 07 Oct 2024 23:25
 Operator : YP\AJ
 Sample : AR1254ICC100
 Misc :
 ALS Vial : 28 Sample Multiplier: 1

Instrument :
 ECD_Q
 ClientSampleId :
 AR12541009

Integration File signal 1: autoint1.e
 Integration File signal 2: autoint2.e
 Quant Time: Oct 08 07:05:36 2024
 Quant Method : Z:\pestpcbsrv\HPCHEM1\ECD_Q\Method\PQ100724CLP.M
 Quant Title : GC EXTRACTABLES
 QLast Update : Tue Oct 08 07:03:39 2024
 Response via : Initial Calibration
 Integrator: ChemStation

Volume Inj. : 1 µl
 Signal #1 Phase : ZB MR2 Signal #2 Phase: ZB MR2
 Signal #1 Info : 30Mx0.32mmx 0.5µm Signal #2 Info : 30M x 0.32mm x 0.25µm

Compound	RT#1	RT#2	Resp#1	Resp#2	ng/ml	ng/ml

System Monitoring Compounds						
1) SA Tetrachlo...	3.331	2.742	63665627	65252221	5.358	5.277
2) SA Decachlor...	8.459	7.485	48986423	79115597	11.263	12.503
Target Compounds						
26) L6 AR-1254-1	5.233	4.487	49117953	75608768	113.860	116.846
27) L6 AR-1254-2	5.450	4.633	76142945	67402582	112.861	119.567
28) L6 AR-1254-3	5.801	5.012	81166171	104.8E6	111.404	115.708
29) L6 AR-1254-4	6.085	5.238	58226944	68746214	110.131	116.583
30) L6 AR-1254-5	6.497	5.641	65659141	99080206	113.016	121.371

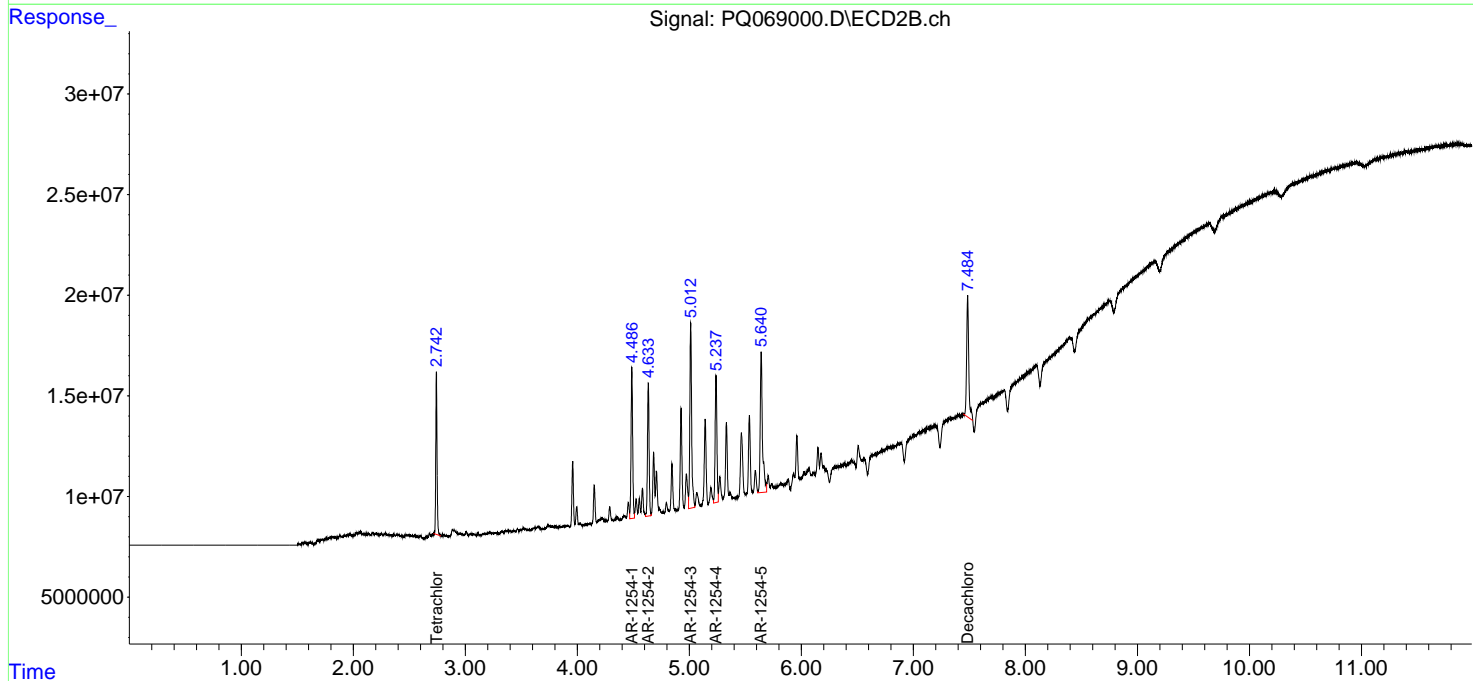
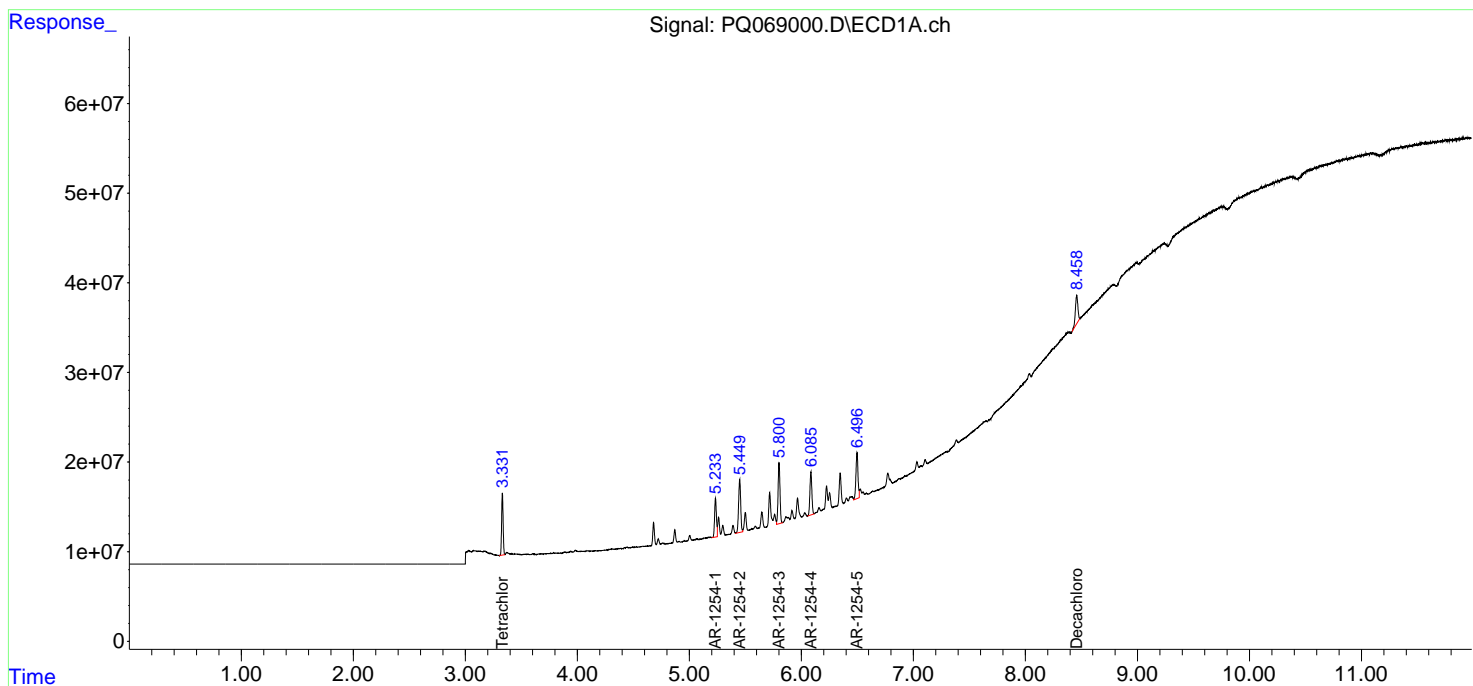
(f)=RT Delta > 1/2 Window (#)=Amounts differ by > 25% (m)=manual int.

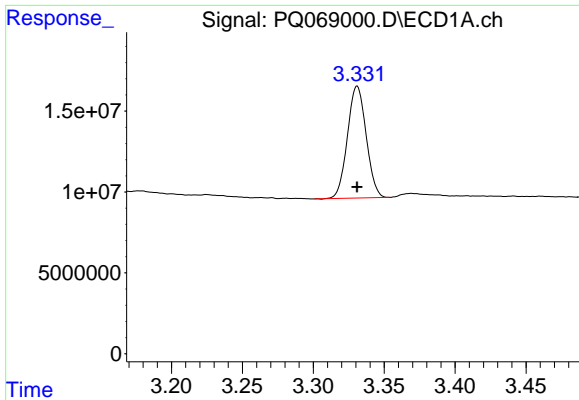
Data Path : Z:\pestpcbsrv\HPCHEM1\ECD_Q\Data\PQ100724\
 Data File : PQ069000.D
 Signal(s) : Signal #1: ECD1A.ch Signal #2: ECD2B.ch
 Acq On : 07 Oct 2024 23:25
 Operator : YP\AJ
 Sample : AR1254ICC100
 Misc :
 ALS Vial : 28 Sample Multiplier: 1

Instrument :
 ECD_Q
 ClientSampleId :
 AR12541009

Integration File signal 1: autoint1.e
 Integration File signal 2: autoint2.e
 Quant Time: Oct 08 07:05:36 2024
 Quant Method : Z:\pestpcbsrv\HPCHEM1\ECD_Q\Method\PQ100724CLP.M
 Quant Title : GC EXTRACTABLES
 QLast Update : Tue Oct 08 07:03:39 2024
 Response via : Initial Calibration
 Integrator: ChemStation

Volume Inj. : 1 µl
 Signal #1 Phase : ZB MR1 Signal #2 Phase: ZB MR2
 Signal #1 Info : 30Mx0.32mmx 0.5µm Signal #2 Info : 30M x 0.32mm x 0.25µm

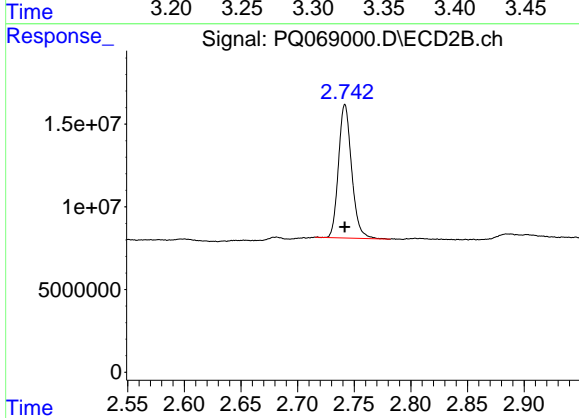




#1 Tetrachloro-m-xylene

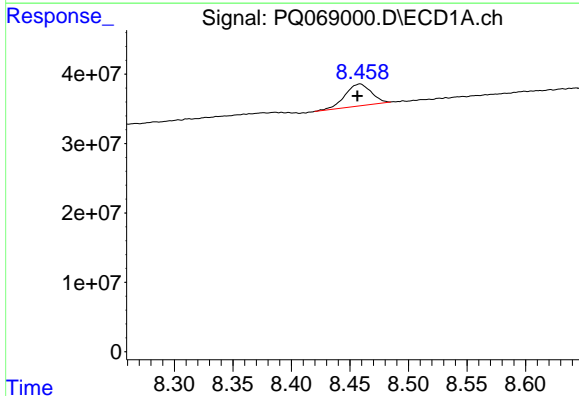
R.T.: 3.331 min
 Delta R.T.: 0.000 min
 Response: 63665627
 Conc: 5.36 ng/ml

Instrument :
 ECD_Q
 ClientSampleId :
 AR12541009



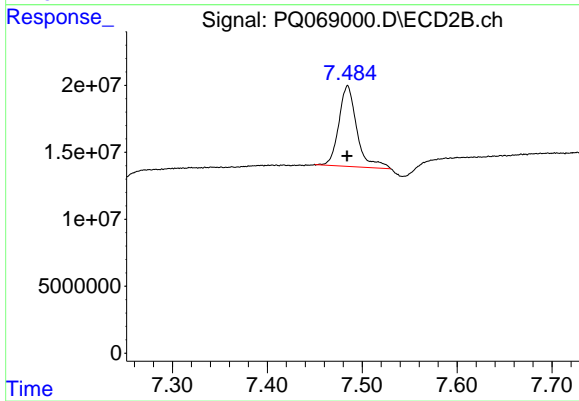
#1 Tetrachloro-m-xylene

R.T.: 2.742 min
 Delta R.T.: 0.000 min
 Response: 65252221
 Conc: 5.28 ng/ml



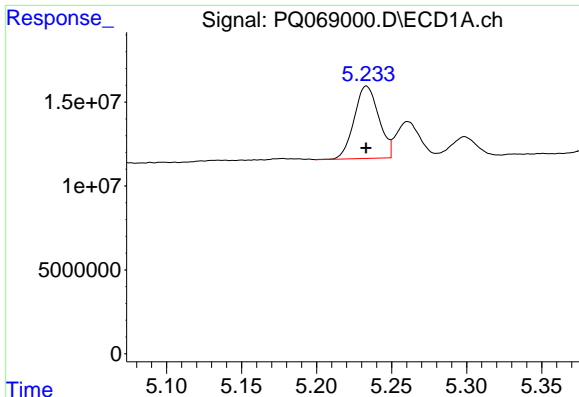
#2 Decachlorobiphenyl

R.T.: 8.459 min
 Delta R.T.: 0.002 min
 Response: 48986423
 Conc: 11.26 ng/ml



#2 Decachlorobiphenyl

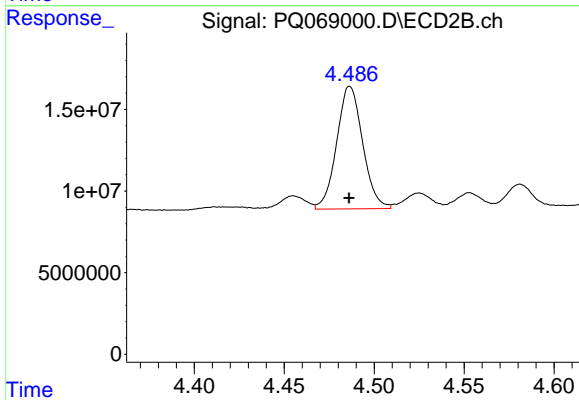
R.T.: 7.485 min
 Delta R.T.: 0.000 min
 Response: 79115597
 Conc: 12.50 ng/ml



#26 AR-1254-1

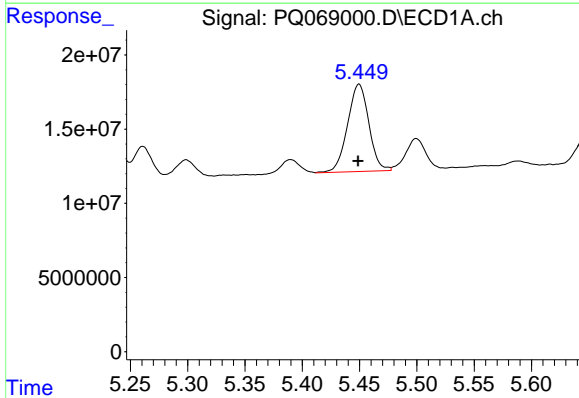
R.T.: 5.233 min
 Delta R.T.: 0.000 min
 Response: 49117953
 Conc: 113.86 ng/ml

Instrument :
 ECD_Q
 ClientSampleId :
 AR12541009



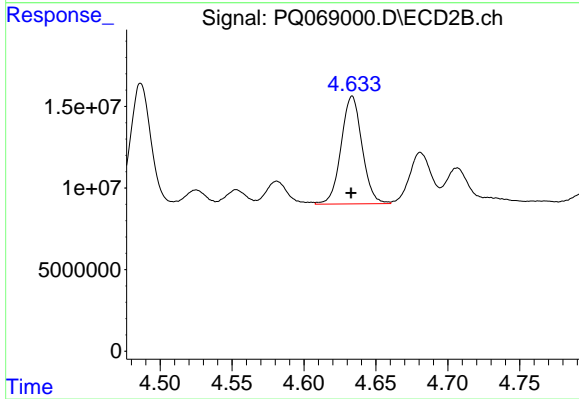
#26 AR-1254-1

R.T.: 4.487 min
 Delta R.T.: 0.000 min
 Response: 75608768
 Conc: 116.85 ng/ml



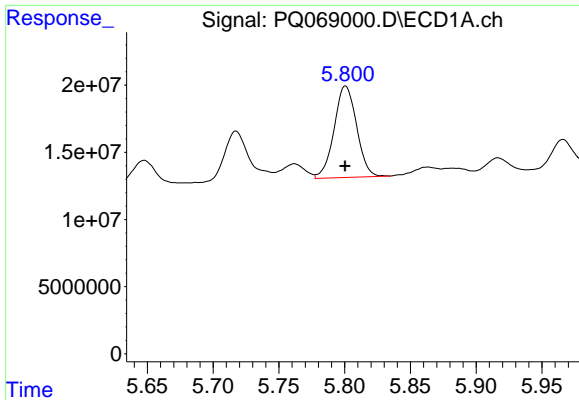
#27 AR-1254-2

R.T.: 5.450 min
 Delta R.T.: 0.000 min
 Response: 76142945
 Conc: 112.86 ng/ml



#27 AR-1254-2

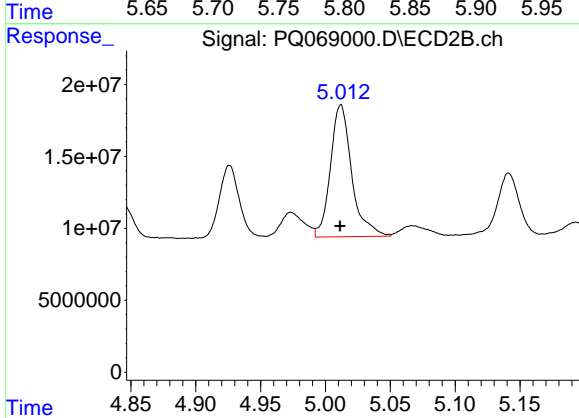
R.T.: 4.633 min
 Delta R.T.: 0.000 min
 Response: 67402582
 Conc: 119.57 ng/ml



#28 AR-1254-3

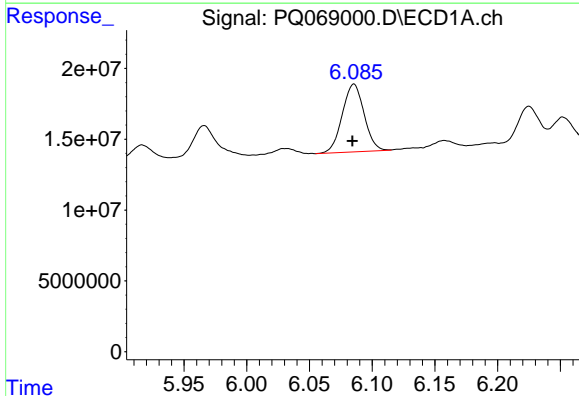
R.T.: 5.801 min
 Delta R.T.: 0.000 min
 Response: 81166171
 Conc: 111.40 ng/ml

Instrument :
 ECD_Q
 ClientSampleId :
 AR12541009



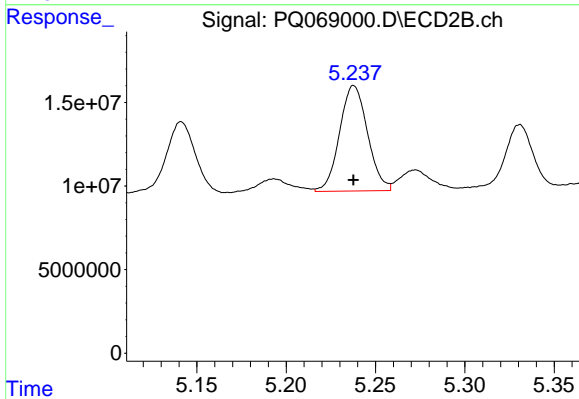
#28 AR-1254-3

R.T.: 5.012 min
 Delta R.T.: 0.000 min
 Response: 104831903
 Conc: 115.71 ng/ml



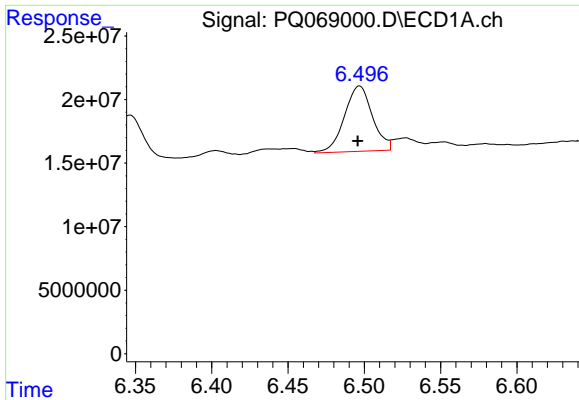
#29 AR-1254-4

R.T.: 6.085 min
 Delta R.T.: 0.001 min
 Response: 58226944
 Conc: 110.13 ng/ml



#29 AR-1254-4

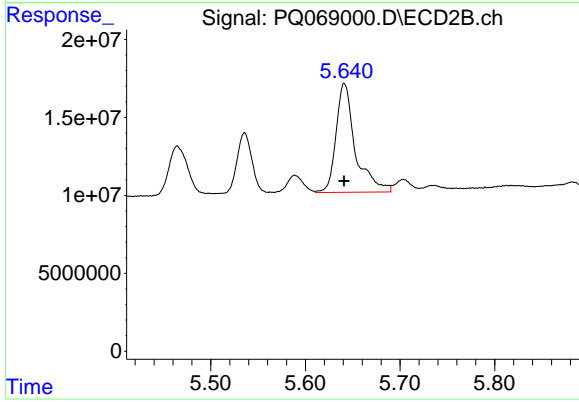
R.T.: 5.238 min
 Delta R.T.: 0.000 min
 Response: 68746214
 Conc: 116.58 ng/ml



#30 AR-1254-5

R.T.: 6.497 min
Delta R.T.: 0.001 min
Response: 65659141
Conc: 113.02 ng/ml

Instrument :
ECD_Q
ClientSampleId :
AR12541009



#30 AR-1254-5

R.T.: 5.641 min
Delta R.T.: 0.000 min
Response: 99080206
Conc: 121.37 ng/ml