

Data Path : Z:\pestpcbsrv\HPCHEM1\ECD_Q\Data\PQ100724\
 Data File : PQ068978.D
 Signal(s) : Signal #1: ECD1A.ch Signal #2: ECD2B.ch
 Acq On : 07 Oct 2024 18:05
 Operator : YP\AJ
 Sample : AR1660ICC800
 Misc :
 ALS Vial : 6 Sample Multiplier: 1

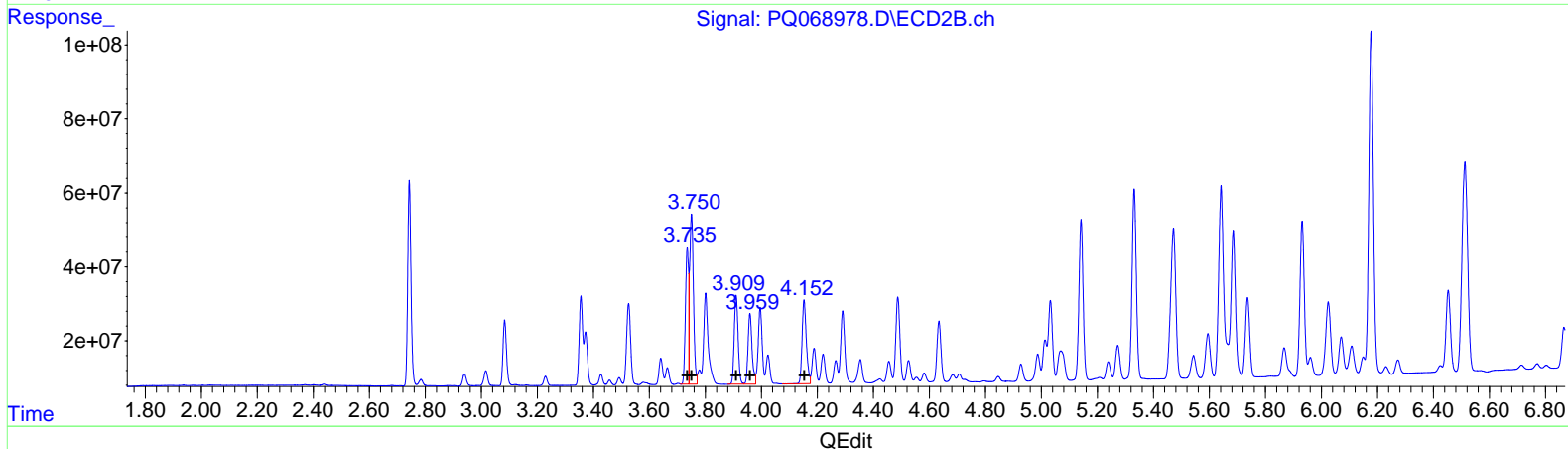
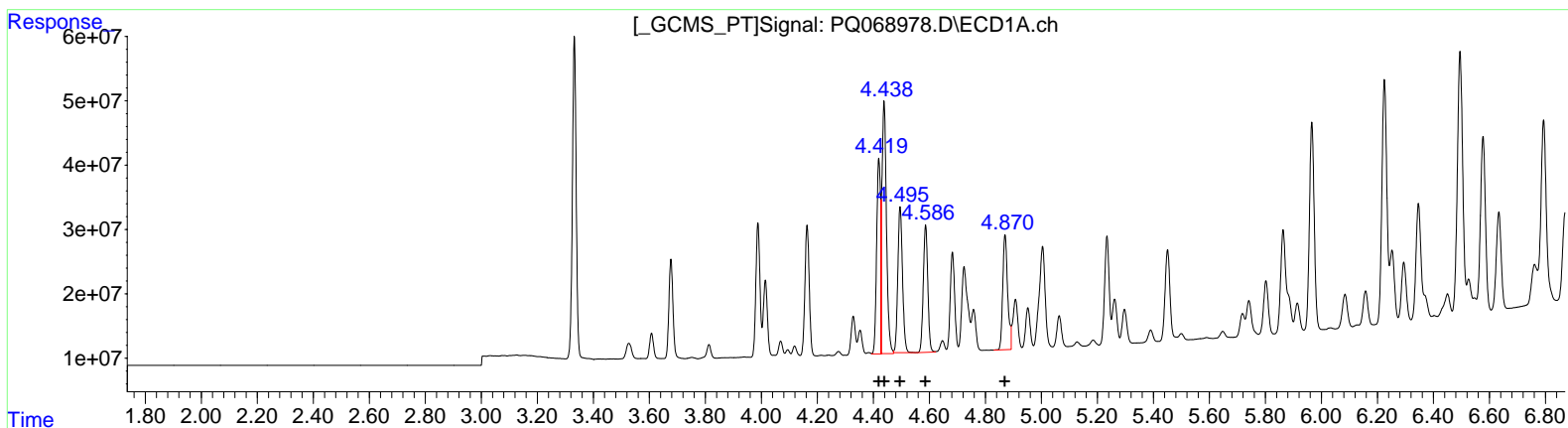
Instrument :
 ECD_Q
 LabSampleId :
 AR1660ICC800

Manual Integrations APPROVED

Reviewed By :Yogesh Patel 10/08/2024
 Supervised By :Ankita Jodhani 10/09/2024

Integration File signal 1: autoint1.e
 Integration File signal 2: autoint2.e
 Quant Time: Oct 08 04:32:57 2024
 Quant Method : Z:\pestpcbsrv\HPCHEM1\ECD_Q\Method\PQ100724CLP.M
 Quant Title : GC EXTRACTABLES
 QLast Update : Tue Oct 08 04:25:17 2024
 Response via : Initial Calibration
 Integrator: ChemStation

Volume Inj. : 1 µl
 Signal #1 Phase : ZB MR1 Signal #2 Phase: ZB MR2
 Signal #1 Info : 30Mx0.32mmx 0.5µm Signal #2 Info : 30M x 0.32mm x 0.25µm



(3) AR-1016-1 (L1)		
R.T.	Response	Conc
4.42	290891413	824.07
4.44	445634370	846.89
4.50	268110120	835.41
4.59	222478064	834.47
4.87	217558949	844.10

(3) AR-1016-1 #2 (L1)		
R.T.	Response	Conc
3.74	290375368	830.52
3.75	429509993	832.23
3.91	231041362	831.76
3.96	191080518	833.79
4.15	241193962	837.29

Data Path : Z:\pestpcbsrv\HPCHEM1\ECD_Q\Data\PQ100724\
 Data File : PQ068978.D
 Signal(s) : Signal #1: ECD1A.ch Signal #2: ECD2B.ch
 Acq On : 07 Oct 2024 18:05
 Operator : YP\AJ
 Sample : AR1660ICC800
 Misc :
 ALS Vial : 6 Sample Multiplier: 1

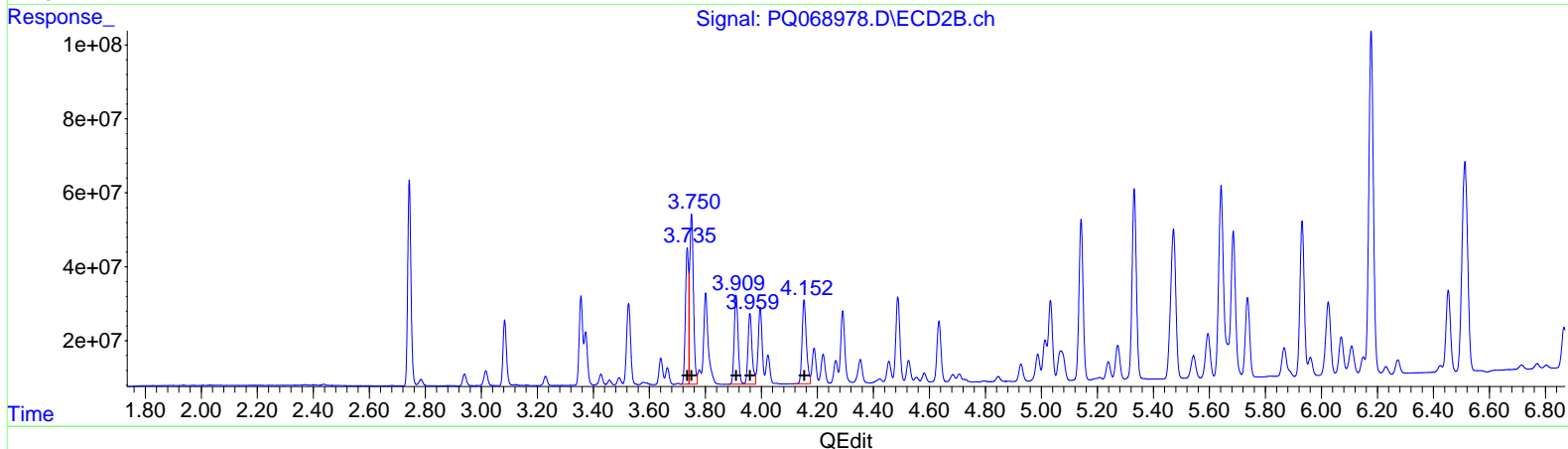
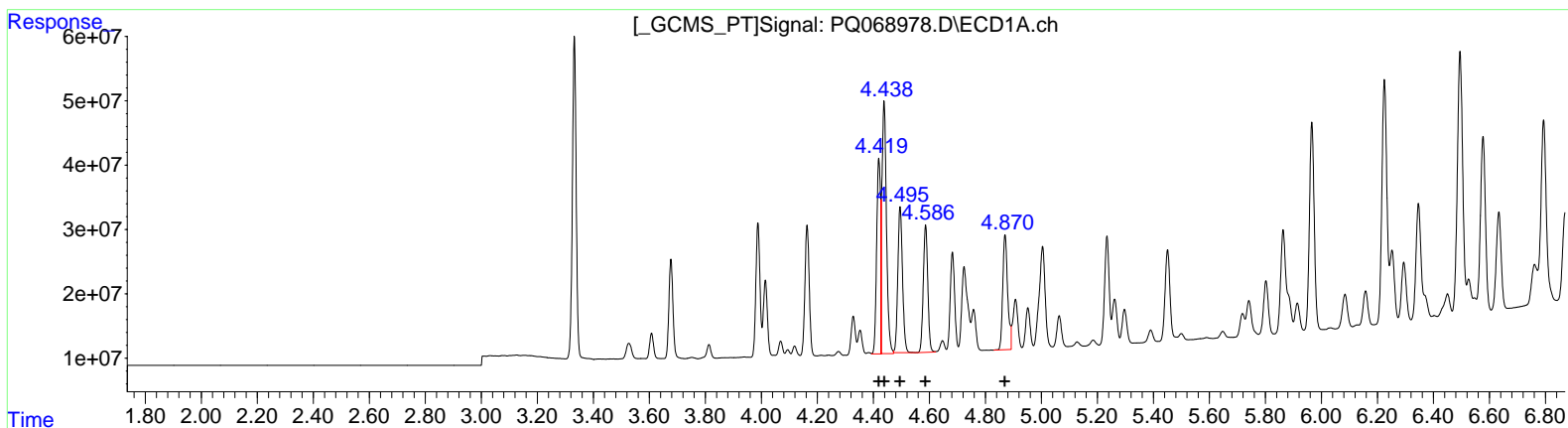
Instrument :
 ECD_Q
 LabSampleId :
 AR1660ICC800

Manual Integrations APPROVED

Reviewed By :Yogesh Patel 10/08/2024
 Supervised By :Ankita Jodhani 10/09/2024

Integration File signal 1: autoint1.e
 Integration File signal 2: autoint2.e
 Quant Time: Oct 08 04:32:57 2024
 Quant Method : Z:\pestpcbsrv\HPCHEM1\ECD_Q\Method\PQ100724CLP.M
 Quant Title : GC EXTRACTABLES
 QLast Update : Tue Oct 08 04:25:17 2024
 Response via : Initial Calibration
 Integrator: ChemStation

Volume Inj. : 1 µl
 Signal #1 Phase : ZB MR1 Signal #2 Phase: ZB MR2
 Signal #1 Info : 30Mx0.32mmx 0.5µm Signal #2 Info : 30M x 0.32mm x 0.25µm



(3) AR-1016-1 (L1)		
R.T.	Response	Conc
4.42	290891413	824.07
4.44	445634370	846.89
4.50	268110120	835.41
4.59	222478064	834.47
4.87	217558949	844.10
(3) AR-1016-1 #2 (L1)		
R.T.	Response	Conc
3.74	290375368	830.52
3.75	429509993	832.23
3.91	231041362	831.76
3.96	191080518	833.79
4.15	240536657	835.01