

Data Path : Z:\pestpcbsrv\HPCHEM1\ECD_Q\Data\PQ100724\
 Data File : PQ069013.D
 Signal(s) : Signal #1: ECD1A.ch Signal #2: ECD2B.ch
 Acq On : 08 Oct 2024 02:34
 Operator : YP\AJ
 Sample : AR1268ICC800
 Misc :
 ALS Vial : 41 Sample Multiplier: 1

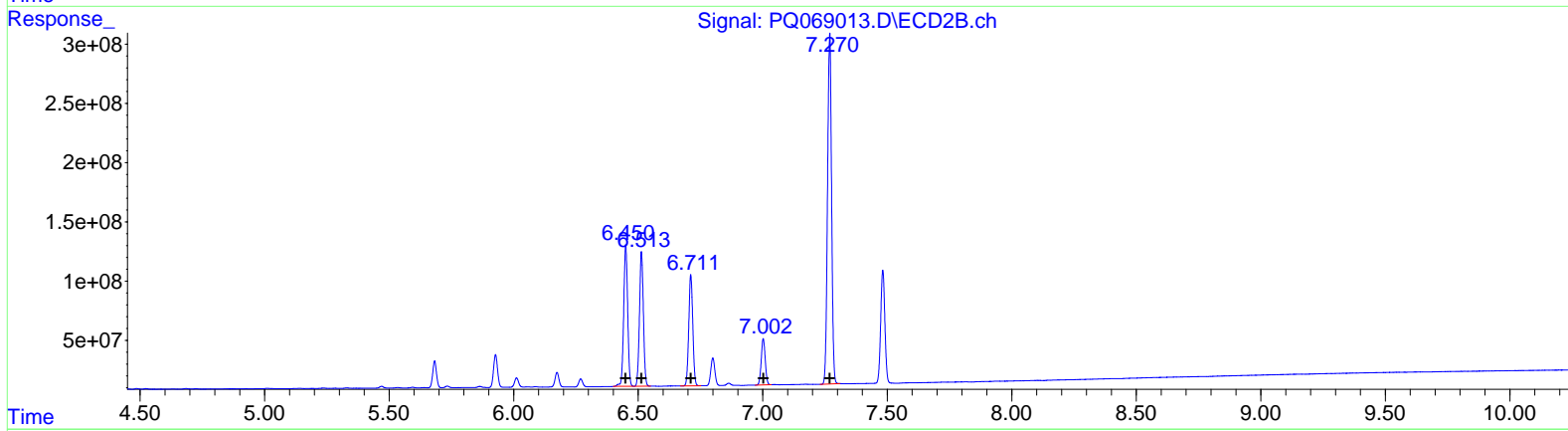
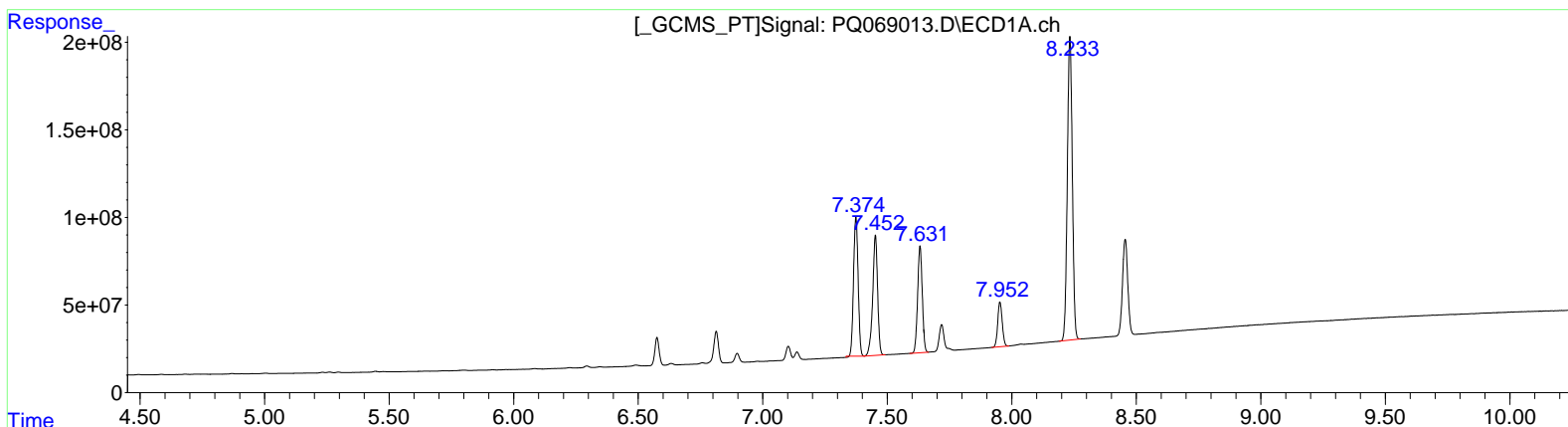
Instrument :
 ECD_Q
 LabSampleID :
 AR1268ICC800

Manual Integrations APPROVED

Reviewed By :Yogesh Patel 10/08/2024
 Supervised By :Ankita Jodhani 10/09/2024

Integration File signal 1: autoint1.e
 Integration File signal 2: autoint2.e
 Quant Time: Oct 08 07:49:51 2024
 Quant Method : Z:\pestpcbsrv\HPCHEM1\ECD_Q\Method\PQ100724CLP.M
 Quant Title : GC EXTRACTABLES
 QLast Update : Tue Oct 08 07:47:23 2024
 Response via : Initial Calibration
 Integrator: ChemStation

Volume Inj. : 1 µl
 Signal #1 Phase : ZB MR1 Signal #2 Phase: ZB MR2
 Signal #1 Info : 30Mx0.32mmx 0.5µm Signal #2 Info : 30M x 0.32mm x 0.25µm



QEdit

(41) AR-1268-1 (L9)		
R.T.	Response	Conc
7.37	1033253576	773.60
7.45	942093349	774.16
7.63	789848542	773.95
7.95	322691207	776.34
8.23	2401670899	780.72
(41) AR-1268-1 #2 (L9)		
R.T.	Response	Conc
6.45	1329352155	742.97
6.51	1238347623	749.85
6.71	1056489267	749.66
7.00	434762219	759.23
7.27	3327354134	765.77

Data Path : Z:\pestpcbsrv\HPCHEM1\ECD_Q\Data\PQ100724\
 Data File : PQ069013.D
 Signal(s) : Signal #1: ECD1A.ch Signal #2: ECD2B.ch
 Acq On : 08 Oct 2024 02:34
 Operator : YP\AJ
 Sample : AR1268ICC800
 Misc :
 ALS Vial : 41 Sample Multiplier: 1

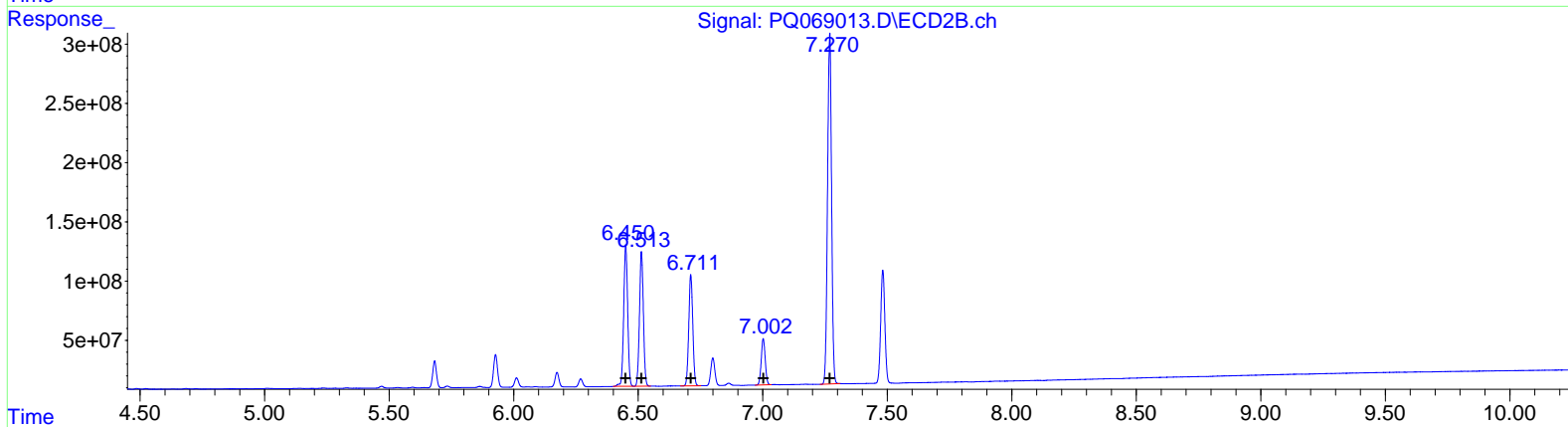
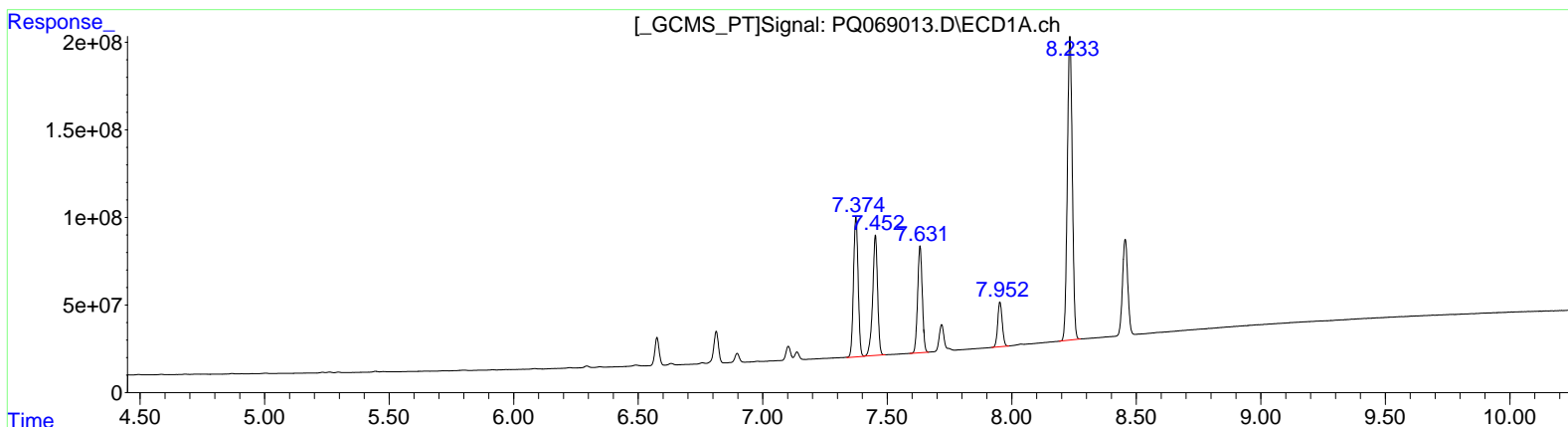
Instrument :
 ECD_Q
 LabSampleID :
 AR1268ICC800

Manual Integrations APPROVED

Reviewed By :Yogesh Patel 10/08/2024
 Supervised By :Ankita Jodhani 10/09/2024

Integration File signal 1: autoint1.e
 Integration File signal 2: autoint2.e
 Quant Time: Oct 08 07:49:51 2024
 Quant Method : Z:\pestpcbsrv\HPCHEM1\ECD_Q\Method\PQ100724CLP.M
 Quant Title : GC EXTRACTABLES
 QLast Update : Tue Oct 08 07:47:23 2024
 Response via : Initial Calibration
 Integrator: ChemStation

Volume Inj. : 1 µl
 Signal #1 Phase : ZB MR1 Signal #2 Phase: ZB MR2
 Signal #1 Info : 30Mx0.32mmx 0.5µm Signal #2 Info : 30M x 0.32mm x 0.25µm



QEdit

(41) AR-1268-1 (L9)		
R.T.	Response	Conc
7.37	1038338992	777.41
7.45	942093349	774.16
7.63	789848542	773.95
7.95	322691207	776.34
8.23	2401670899	780.72
(41) AR-1268-1 #2 (L9)		
R.T.	Response	Conc
6.45	1329352155	742.97
6.51	1238347623	749.85
6.71	1056489267	749.66
7.00	434762219	759.23
7.27	3327354134	765.77