

Data Path : Z:\pestpcbsrv\HPCHEM1\ECD_Q\Data\PQ100919\
 Data File : PQ044156.D
 Signal(s) : Signal #1: ECD1A.ch Signal #2: ECD2B.ch
 Acq On : 09 Oct 2019 13:07
 Operator : HP\AJ
 Sample : K5235-08
 Misc :
 ALS Vial : 19 Sample Multiplier: 1

Instrument :
 ECD_Q
 ClientSampleId :
 BEPK6

Integration File signal 1: autoint1.e
 Integration File signal 2: autoint2.e
 Quant Time: Oct 10 04:04:58 2019
 Quant Method : Z:\pestpcbsrv\HPCHEM1\ECD_Q\Method\PQ100819CLP.M
 Quant Title : GC EXTRACTABLES
 QLast Update : Thu Oct 10 02:55:10 2019
 Response via : Initial Calibration
 Integrator: ChemStation

Volume Inj. : 1 µl
 Signal #1 Phase : ZB MR1 Signal #2 Phase: ZB MR2
 Signal #1 Info : 30Mx0.32mmx 0.5µm Signal #2 Info : 30M x 0.32mm x 0.25µm

Compound	RT#1	RT#2	Resp#1	Resp#2	ng/ml	ng/ml

System Monitoring Compounds						
1) SA Tetrachlo...	5.318	4.356	35467686	42204402	9.123	9.455
2) SA Decachlor...	11.606	9.808	74257720	79311173	13.860	13.260
Target Compounds						
7) L1 AR-1016-5	7.157	6.140	1455927	2654558	19.249	21.709
15) L3 AR-1232-5	6.936	6.140	1407829	2654558	49.931	48.562
20) L4 AR-1242-5	0.000	6.524	0	2853129	N.D.	22.391 #
22) L5 AR-1248-2	6.936	0.000	1407829	0	14.212	N.D. #
23) L5 AR-1248-3	7.157	0.000	1455927	0	13.481	N.D. #
24) L5 AR-1248-4	0.000	6.140	0	2654558	N.D.	15.455 #
25) L5 AR-1248-5	0.000	6.524	0	2853129	N.D.	17.042 #
26) L6 AR-1254-1	0.000	6.524	0	2853129	N.D.	9.782 #
27) L6 AR-1254-2	7.791	0.000	2787857	0	13.050	N.D. #
28) L6 AR-1254-3	8.175	0.000	2188601	0	8.895	N.D. #
29) L6 AR-1254-4	8.470	0.000	1989990	0	9.922	N.D. #
30) L6 AR-1254-5	8.874	0.000	26976528	0	112.710	N.D. #
40) L8 AR-1262-5	0.000	9.233	0	3086107	N.D.	11.006 #
44) L9 AR-1268-4	0.000	9.233	0	3086107	N.D.	9.438 #

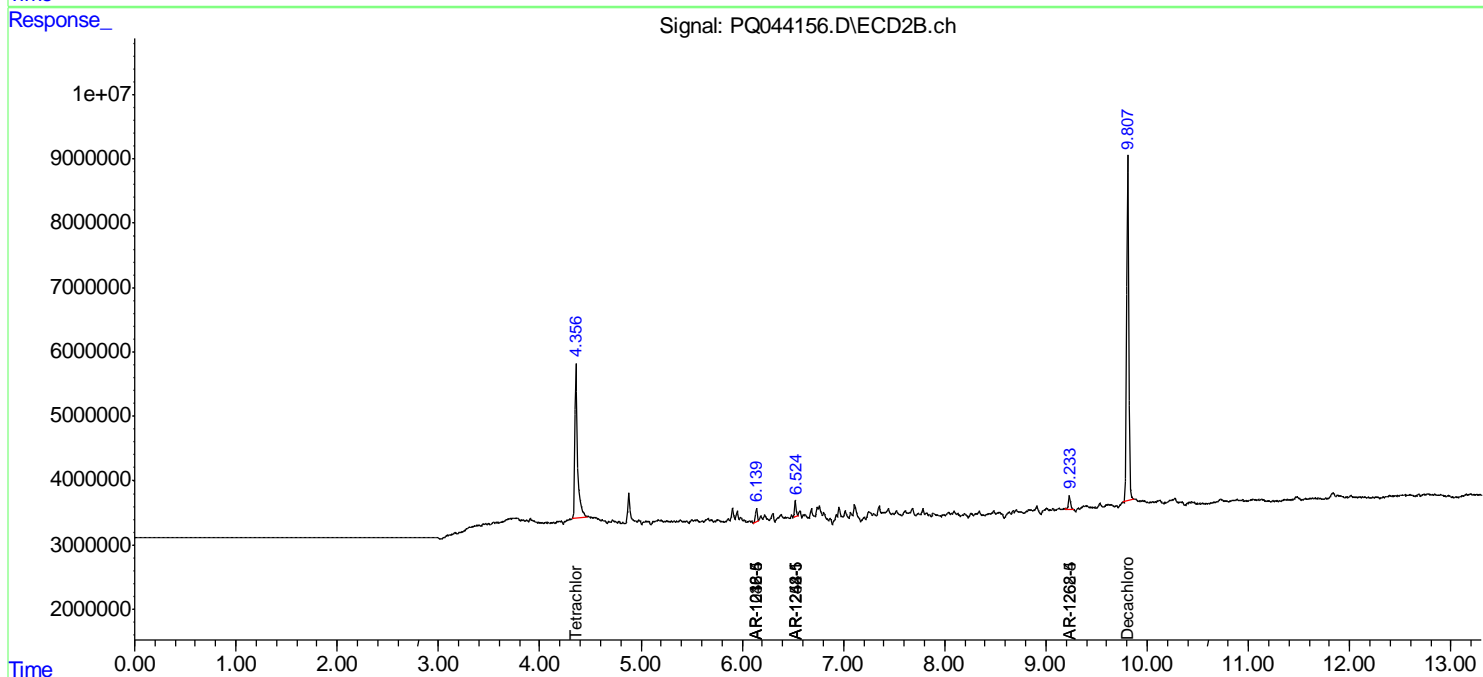
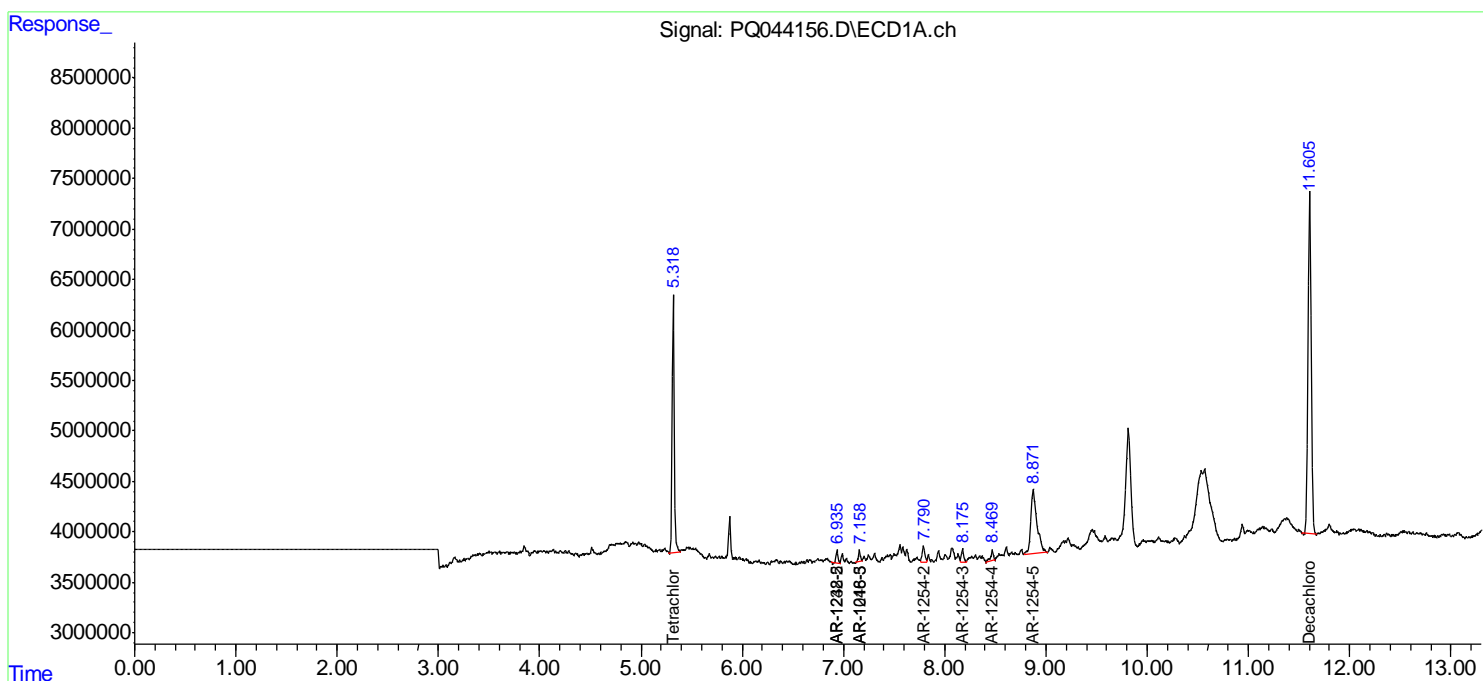
(f)=RT Delta > 1/2 Window (#)=Amounts differ by > 25% (m)=manual int.

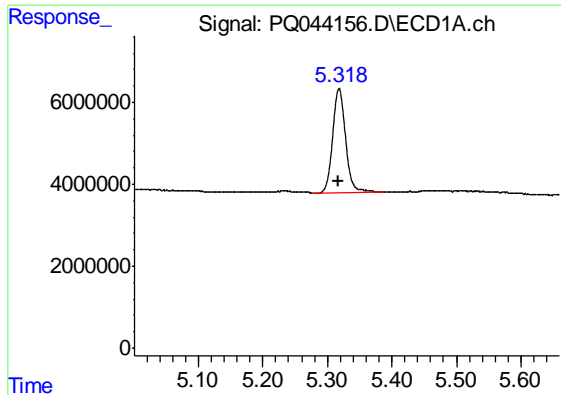
Data Path : Z:\pestpcbsrv\HPCHEM1\ECD_Q\Data\PQ100919\
 Data File : PQ044156.D
 Signal(s) : Signal #1: ECD1A.ch Signal #2: ECD2B.ch
 Acq On : 09 Oct 2019 13:07
 Operator : HP\AJ
 Sample : K5235-08
 Misc :
 ALS Vial : 19 Sample Multiplier: 1

Instrument :
 ECD_Q
 ClientSampled :
 BEPK6

Integration File signal 1: autoint1.e
 Integration File signal 2: autoint2.e
 Quant Time: Oct 10 04:04:58 2019
 Quant Method : Z:\pestpcbsrv\HPCHEM1\ECD_Q\Method\PQ100819CLP.M
 Quant Title : GC EXTRACTABLES
 QLast Update : Thu Oct 10 02:55:10 2019
 Response via : Initial Calibration
 Integrator: ChemStation

Volume Inj. : 1 µl
 Signal #1 Phase : ZB MR1 Signal #2 Phase: ZB MR2
 Signal #1 Info : 30Mx0.32mmx 0.5µm Signal #2 Info : 30M x 0.32mm x 0.25µm

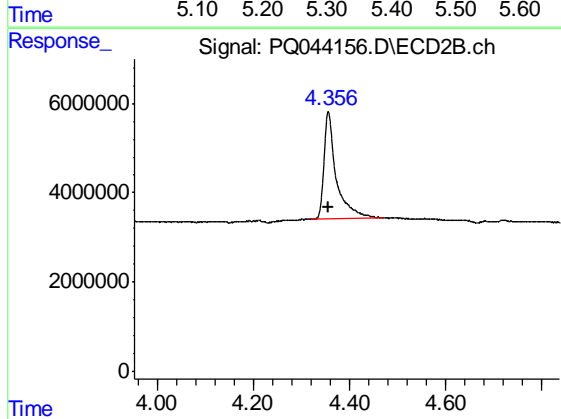




#1 Tetrachloro-m-xylene

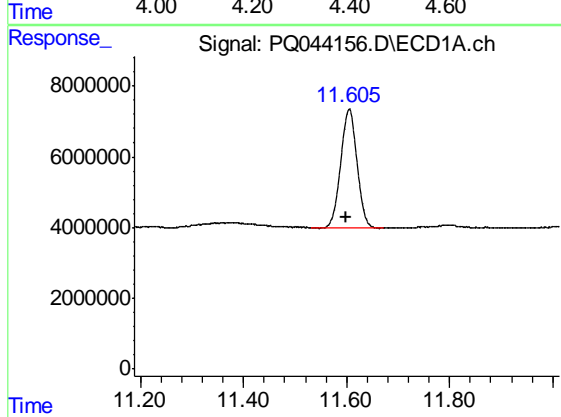
R.T.: 5.318 min
 Delta R.T.: 0.001 min
 Response: 35467686
 Conc: 9.12 ng/ml

Instrument :
 ECD_Q
 ClientSampleId :
 BEPK6



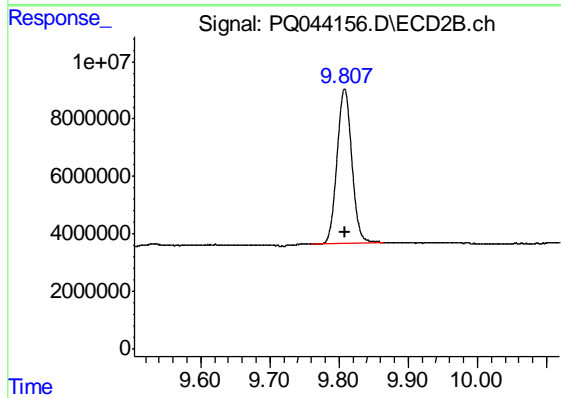
#1 Tetrachloro-m-xylene

R.T.: 4.356 min
 Delta R.T.: 0.001 min
 Response: 42204402
 Conc: 9.45 ng/ml



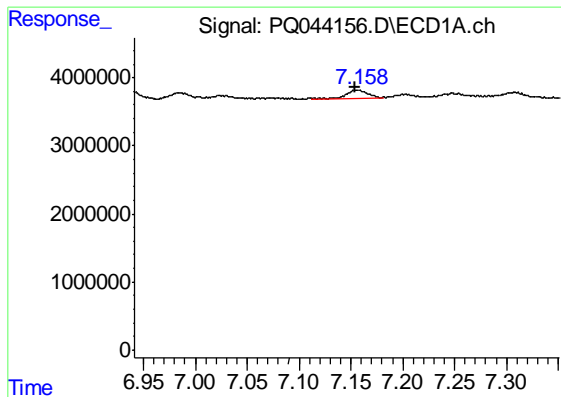
#2 Decachlorobiphenyl

R.T.: 11.606 min
 Delta R.T.: 0.007 min
 Response: 74257720
 Conc: 13.86 ng/ml



#2 Decachlorobiphenyl

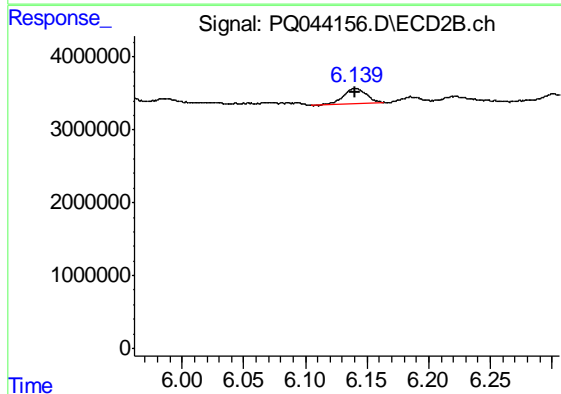
R.T.: 9.808 min
 Delta R.T.: 0.000 min
 Response: 79311173
 Conc: 13.26 ng/ml



#7 AR-1016-5

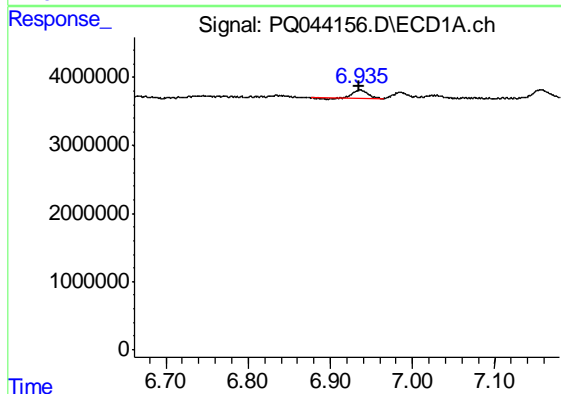
R.T.: 7.157 min
 Delta R.T.: 0.002 min
 Response: 1455927
 Conc: 19.25 ng/ml

Instrument :
 ECD_Q
 ClientSampled :
 BEPK6



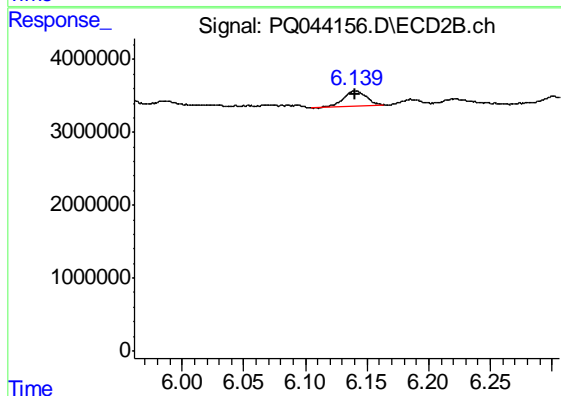
#7 AR-1016-5

R.T.: 6.140 min
 Delta R.T.: 0.000 min
 Response: 2654558
 Conc: 21.71 ng/ml



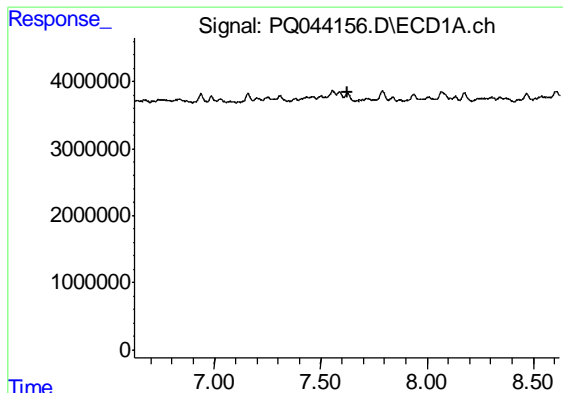
#15 AR-1232-5

R.T.: 6.936 min
 Delta R.T.: 0.000 min
 Response: 1407829
 Conc: 49.93 ng/ml



#15 AR-1232-5

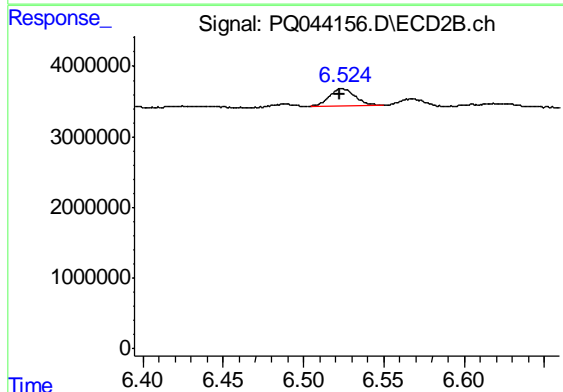
R.T.: 6.140 min
 Delta R.T.: 0.000 min
 Response: 2654558
 Conc: 48.56 ng/ml



#20 AR-1242-5

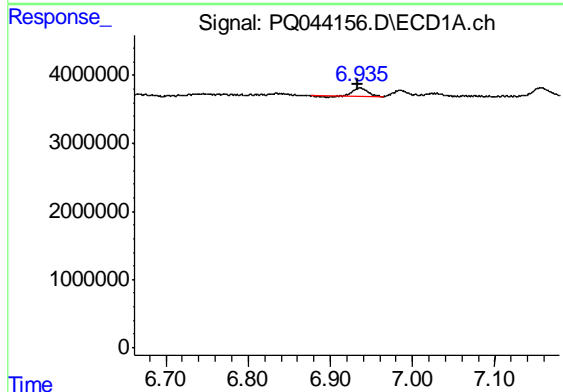
R.T.: 0.000 min
 Exp R.T. : 7.624 min
 Response: 0
 Conc: N.D.

Instrument :
 ECD_Q
 ClientSampled :
 BEPK6



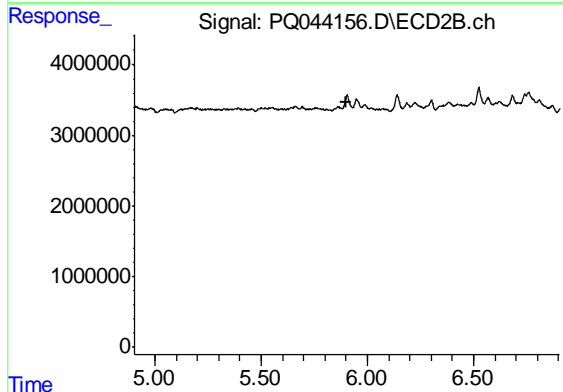
#20 AR-1242-5

R.T.: 6.524 min
 Delta R.T.: 0.002 min
 Response: 2853129
 Conc: 22.39 ng/ml



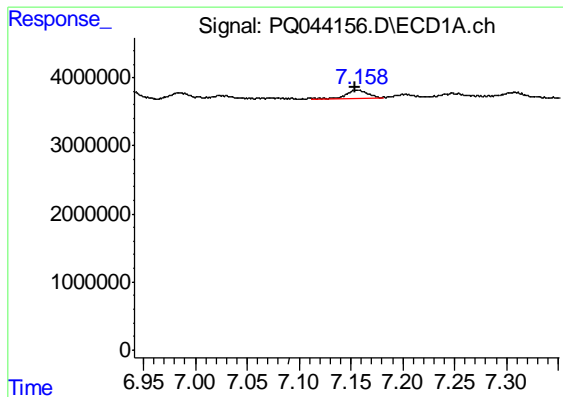
#22 AR-1248-2

R.T.: 6.936 min
 Delta R.T.: 0.002 min
 Response: 1407829
 Conc: 14.21 ng/ml



#22 AR-1248-2

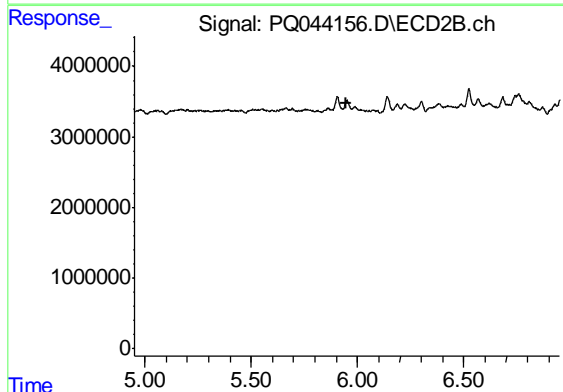
R.T.: 0.000 min
 Exp R.T. : 5.904 min
 Response: 0
 Conc: N.D.



#23 AR-1248-3

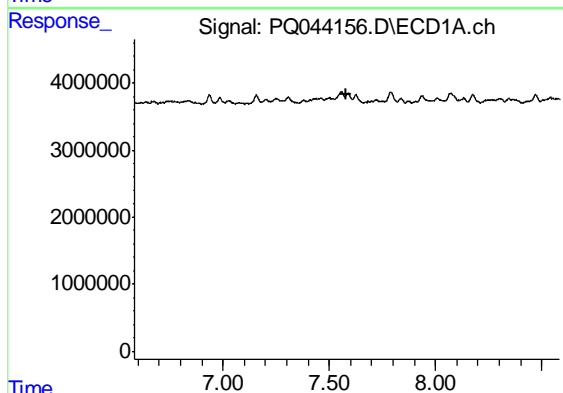
R.T.: 7.157 min
 Delta R.T.: 0.002 min
 Response: 1455927
 Conc: 13.48 ng/ml

Instrument :
 ECD_Q
 ClientSampleId :
 BEPK6



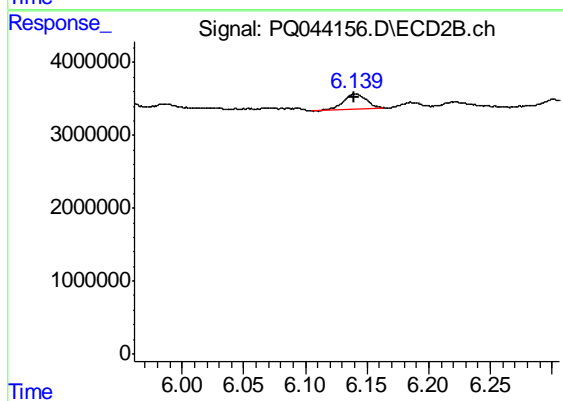
#23 AR-1248-3

R.T.: 0.000 min
 Exp R.T. : 5.950 min
 Response: 0
 Conc: N.D.



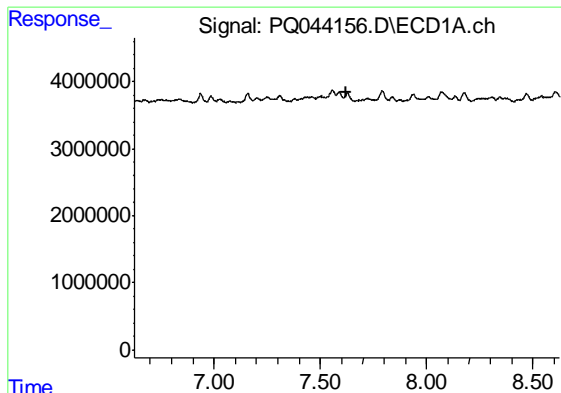
#24 AR-1248-4

R.T.: 0.000 min
 Exp R.T. : 7.583 min
 Response: 0
 Conc: N.D.



#24 AR-1248-4

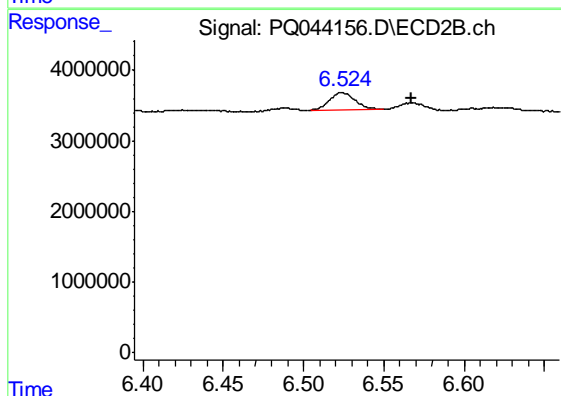
R.T.: 6.140 min
 Delta R.T.: 0.000 min
 Response: 2654558
 Conc: 15.45 ng/ml



#25 AR-1248-5

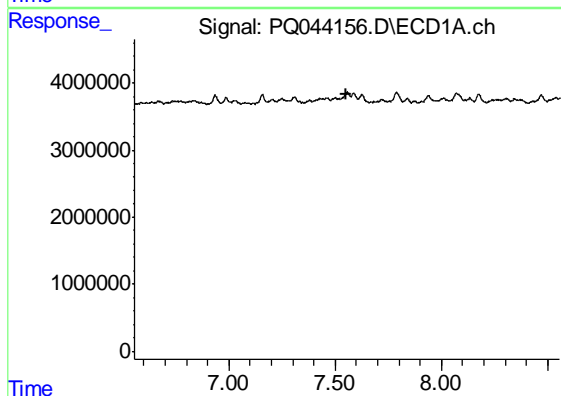
R.T.: 0.000 min
 Exp R.T. : 7.625 min
 Response: 0
 Conc: N.D.

Instrument :
 ECD_Q
 ClientSampleId :
 BEPK6



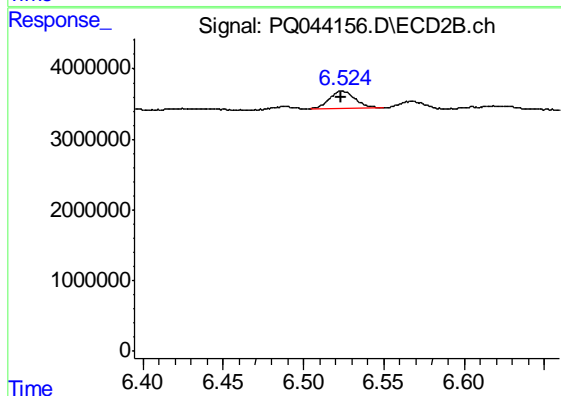
#25 AR-1248-5

R.T.: 6.524 min
 Delta R.T.: -0.043 min
 Response: 2853129
 Conc: 17.04 ng/ml



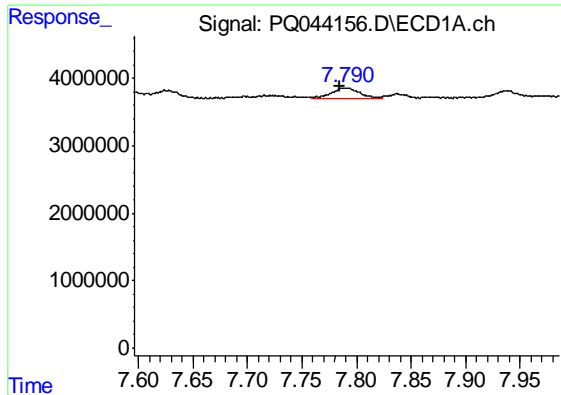
#26 AR-1254-1

R.T.: 0.000 min
 Exp R.T. : 7.555 min
 Response: 0
 Conc: N.D.



#26 AR-1254-1

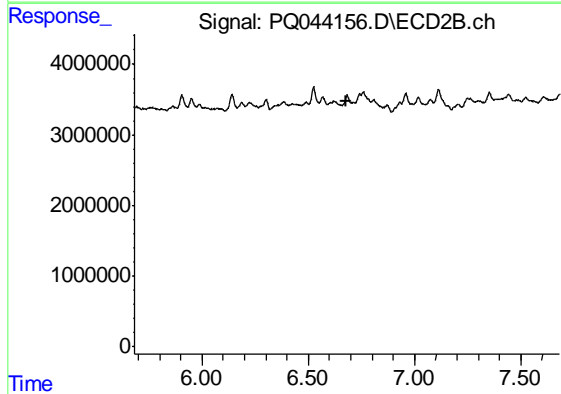
R.T.: 6.524 min
 Delta R.T.: 0.000 min
 Response: 2853129
 Conc: 9.78 ng/ml



#27 AR-1254-2

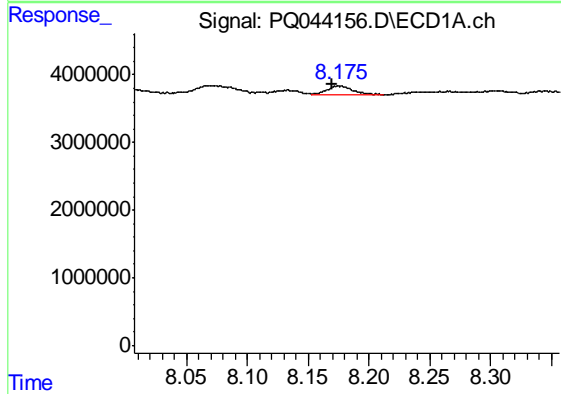
R.T.: 7.791 min
 Delta R.T.: 0.006 min
 Response: 2787857
 Conc: 13.05 ng/ml

Instrument :
 ECD_Q
 ClientSampled :
 BEPK6



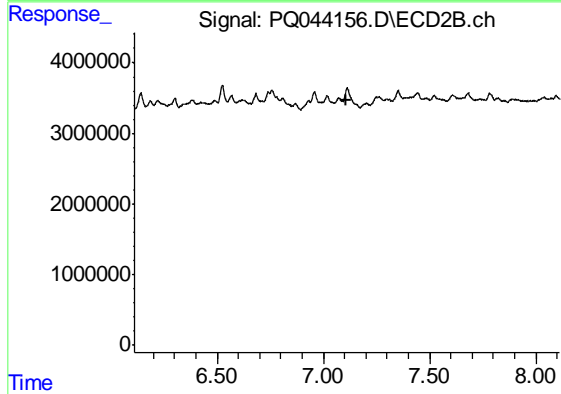
#27 AR-1254-2

R.T.: 0.000 min
 Exp R.T. : 6.681 min
 Response: 0
 Conc: N.D.



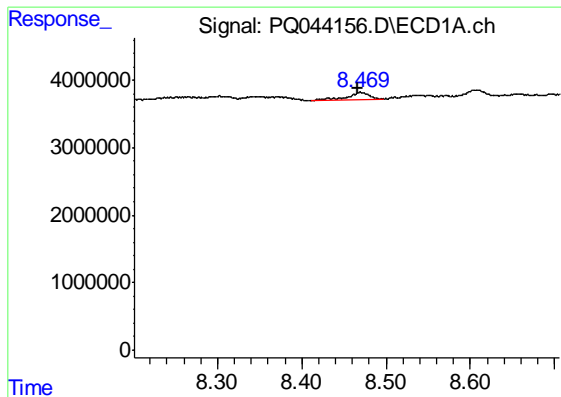
#28 AR-1254-3

R.T.: 8.175 min
 Delta R.T.: 0.005 min
 Response: 2188601
 Conc: 8.90 ng/ml



#28 AR-1254-3

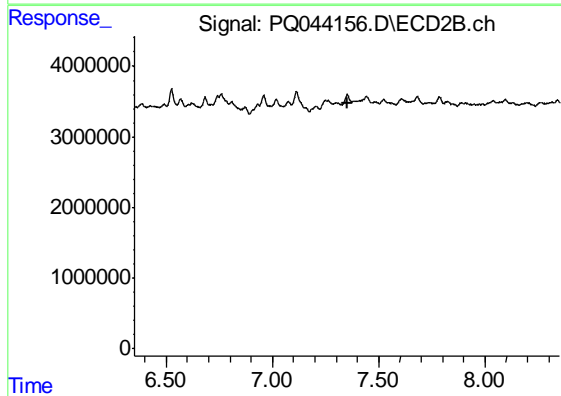
R.T.: 0.000 min
 Exp R.T. : 7.111 min
 Response: 0
 Conc: N.D.



#29 AR-1254-4

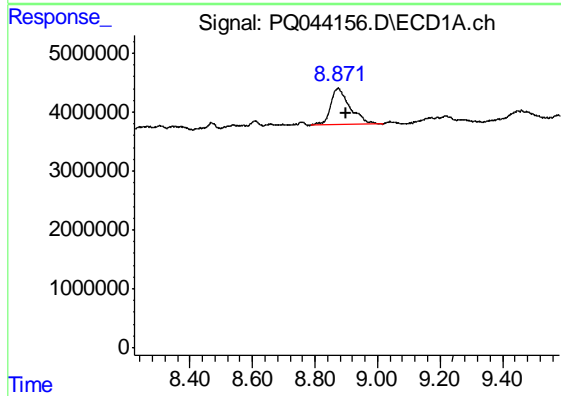
R.T.: 8.470 min
 Delta R.T.: 0.004 min
 Response: 1989990
 Conc: 9.92 ng/ml

Instrument :
 ECD_Q
 ClientSampled :
 BEPK6



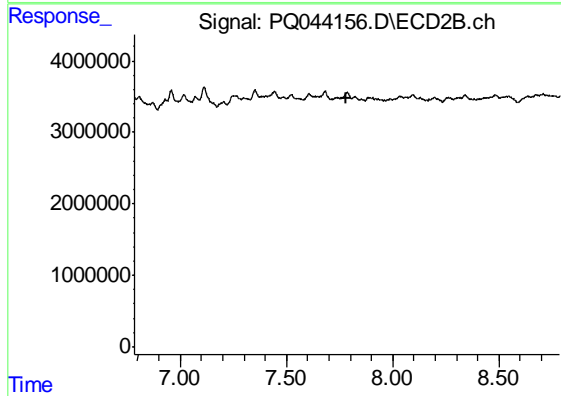
#29 AR-1254-4

R.T.: 0.000 min
 Exp R.T. : 7.350 min
 Response: 0
 Conc: N.D.



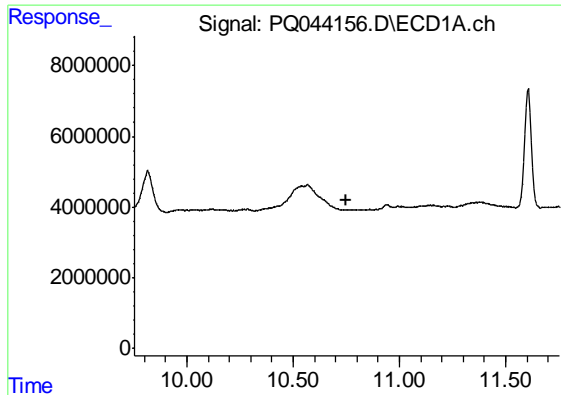
#30 AR-1254-5

R.T.: 8.874 min
 Delta R.T.: -0.027 min
 Response: 26976528
 Conc: 112.71 ng/ml



#30 AR-1254-5

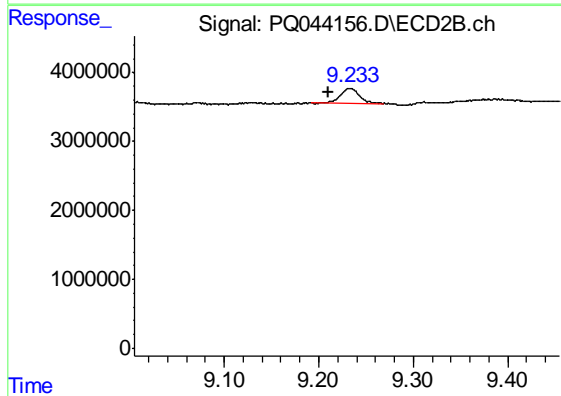
R.T.: 0.000 min
 Exp R.T. : 7.785 min
 Response: 0
 Conc: N.D.



#40 AR-1262-5

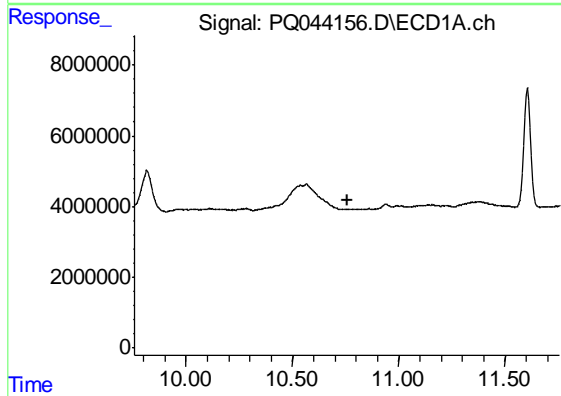
R.T.: 0.000 min
 Exp R.T. : 10.753 min
 Response: 0
 Conc: N.D.

Instrument :
 ECD_Q
 ClientSampled :
 BEPK6



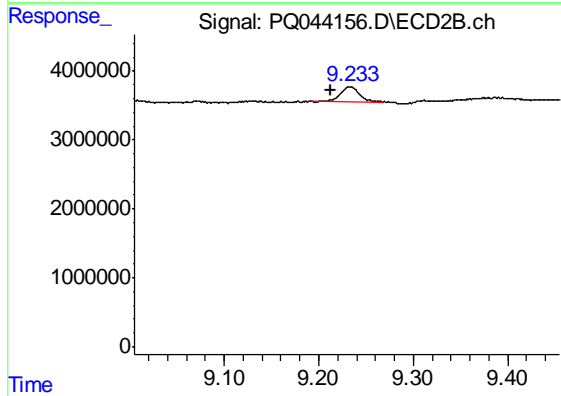
#40 AR-1262-5

R.T.: 9.233 min
 Delta R.T.: 0.022 min
 Response: 3086107
 Conc: 11.01 ng/ml



#44 AR-1268-4

R.T.: 0.000 min
 Exp R.T. : 10.756 min
 Response: 0
 Conc: N.D.



#44 AR-1268-4

R.T.: 9.233 min
 Delta R.T.: 0.021 min
 Response: 3086107
 Conc: 9.44 ng/ml