

Data Path : Z:\pestpcbsrv\HPCHEM1\ECD_Q\Data\PQ100919\
 Data File : PQ044203.D
 Signal(s) : Signal #1: ECD1A.ch Signal #2: ECD2B.ch
 Acq On : 10 Oct 2019 02:10
 Operator : HP\AJ
 Sample : AR1254CCC400
 Misc :
 ALS Vial : 6 Sample Multiplier: 1

Instrument :
 ECD_Q
 ClientSampleId :
 AR1254309

Integration File signal 1: autoint1.e
 Integration File signal 2: autoint2.e
 Quant Time: Oct 10 04:26:18 2019
 Quant Method : Z:\pestpcbsrv\HPCHEM1\ECD_Q\Method\PQ100819CLP.M
 Quant Title : GC EXTRACTABLES
 QLast Update : Thu Oct 10 02:55:10 2019
 Response via : Initial Calibration
 Integrator: ChemStation

Volume Inj. : 1 µl
 Signal #1 Phase : ZB MR1 Signal #2 Phase: ZB MR2
 Signal #1 Info : 30Mx0.32mmx 0.5µm Signal #2 Info : 30M x 0.32mm x 0.25µm

Compound	RT#1	RT#2	Resp#1	Resp#2	ng/ml	ng/ml

System Monitoring Compounds						
1) SA Tetrachlo...	5.319	4.356	97341488	112.5E6	25.038	25.201
2) SA Decachlor...	11.601	9.801	213.6E6	238.4E6	39.863	39.859
Target Compounds						
3) L1 AR-1016-1	6.642	0.000	1787181	0	15.748	N.D. #
4) L1 AR-1016-2	6.666	0.000	2227613	0	13.808	N.D. #
5) L1 AR-1016-3	6.666	5.904	2227613	50901665	21.885	487.767 #
6) L1 AR-1016-4	0.000	5.904	0	50901665	N.D.	544.670 #
7) L1 AR-1016-5	7.155	6.139	21187567	32128702	280.126	262.747
13) L3 AR-1232-3	6.666	5.904	2227613	50901665	29.037	1030.024 #
14) L3 AR-1232-4	0.000	5.949	0	13244521	N.D.	280.833 #
15) L3 AR-1232-5	6.935	6.139	35581650	32128702	1261.967	587.755 #
16) L4 AR-1242-1	6.642	0.000	1787181	0	18.306	N.D. #
17) L4 AR-1242-2	6.666	0.000	2227613	0	16.015	N.D. #
18) L4 AR-1242-3	6.666	5.904	2227613	50901665	25.065	550.356 #
19) L4 AR-1242-4	0.000	5.949	0	13244521	N.D.	134.752 #
20) L4 AR-1242-5	7.628	6.522	20009848	135.8E6	263.201	1065.455 #
21) L5 AR-1248-1	6.642	0.000	1787181	0	24.356	N.D. #
22) L5 AR-1248-2	6.935	5.904	35581650	50901665	359.193	367.242
23) L5 AR-1248-3	7.155	5.949	21187567	13244521	196.184	93.650 #
24) L5 AR-1248-4	7.584	6.139	32068148	32128702	254.708	187.050 #
25) L5 AR-1248-5	7.628	6.566	20009848	15622500	165.264	93.313 #
26) L6 AR-1254-1	7.556	6.522	63053831	135.8E6	468.601	465.482
27) L6 AR-1254-2	7.786	6.680	99400736	119.6E6	465.304	458.087
28) L6 AR-1254-3	8.171	7.109	113.0E6	199.4E6	459.402	456.444
29) L6 AR-1254-4	8.468	7.348	91648856	121.4E6	456.967	451.928
30) L6 AR-1254-5	8.902	7.783	108.0E6	178.0E6	451.137	445.269
31) L7 AR-1260-1	8.341	7.246	45994520	93979027	305.544	386.518 #
32) L7 AR-1260-2	8.605	7.441	55806399	78006472	283.553	258.423
33) L7 AR-1260-3	8.968	7.602	13765652	78579482	85.857	279.225 #
34) L7 AR-1260-4	9.218	8.090	45579798	8093022	233.438	32.170 #
35) L7 AR-1260-5	9.580	8.335	16988691	18797809	37.159	29.329
36) L8 AR-1262-1	9.042	7.783	3777104	178.0E6	34.778	912.368 #
37) L8 AR-1262-2	9.580	8.335	16988691	18797809	29.501	23.759
38) L8 AR-1262-3	9.947	8.691	14815728	19284123	35.712	60.806 #
39) L8 AR-1262-4	10.000	8.691	3799507	19284123	12.061	31.642 #
41) L9 AR-1268-1	9.947	8.691	14815728	19284123	20.720	19.994
42) L9 AR-1268-2	10.000	8.691	3799507	19284123	5.591	21.206 #
43) L9 AR-1268-3	10.282	0.000	2505898	0	4.366	N.D. #

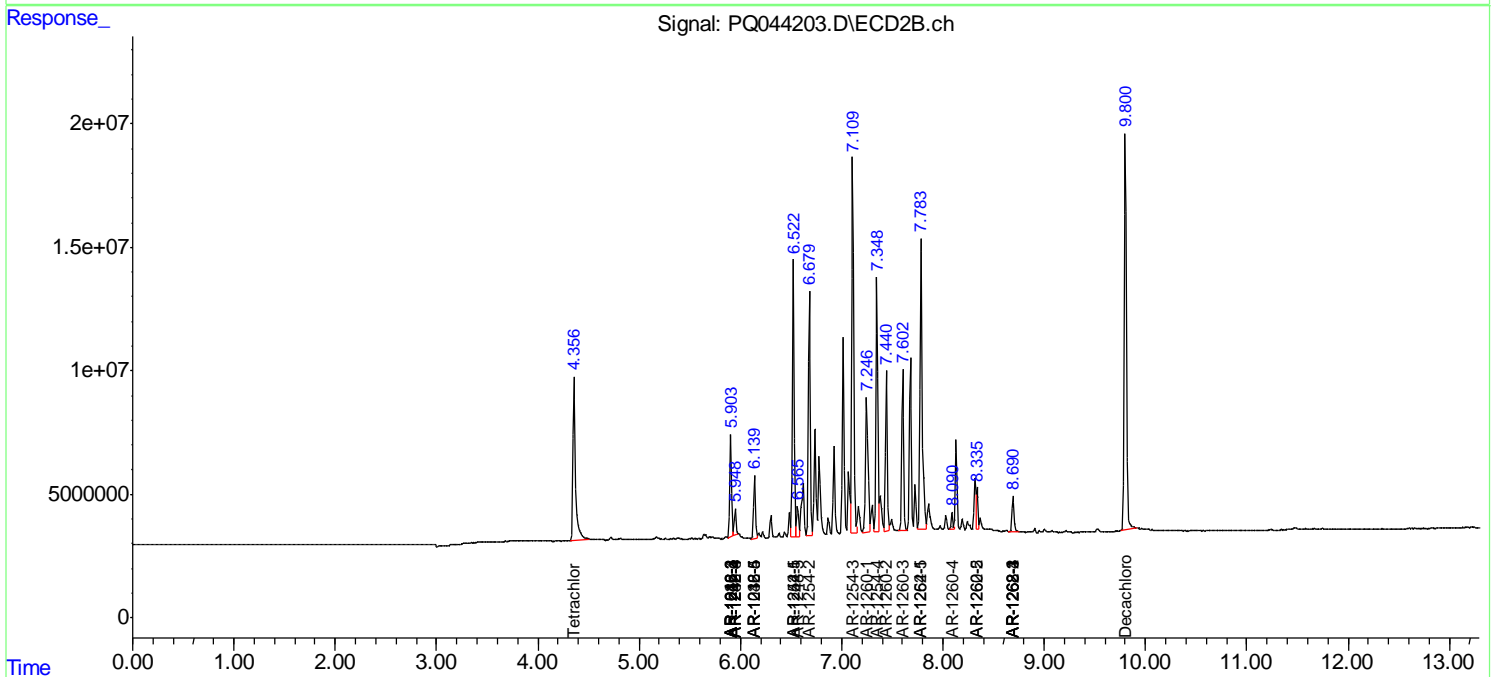
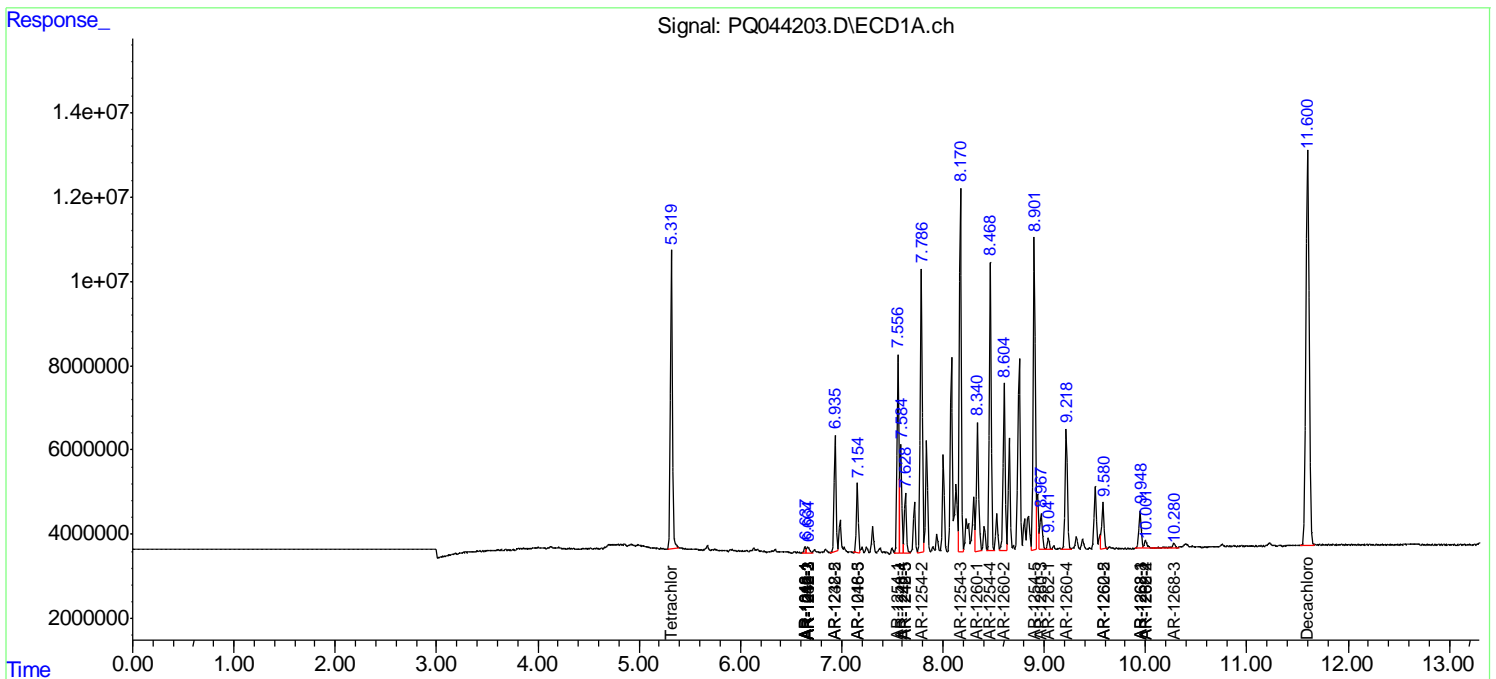
(f)=RT Delta > 1/2 Window (#)=Amounts differ by > 25% (m)=manual int.

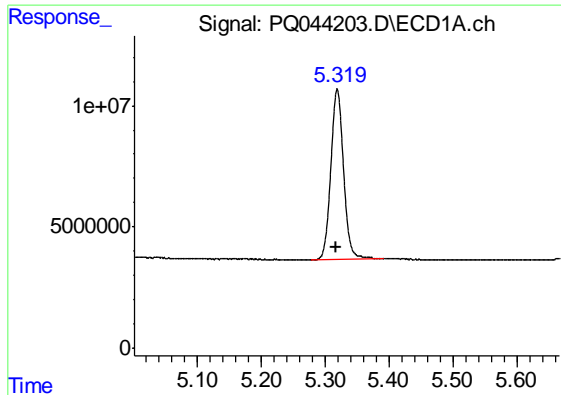
Data Path : Z:\pestpcbsrv\HPCHEM1\ECD_Q\Data\PQ100919\
 Data File : PQ044203.D
 Signal(s) : Signal #1: ECD1A.ch Signal #2: ECD2B.ch
 Acq On : 10 Oct 2019 02:10
 Operator : HP\AJ
 Sample : AR1254CCC400
 Misc :
 ALS Vial : 6 Sample Multiplier: 1

Instrument :
 ECD_Q
 ClientSampled :
 AR1254309

Integration File signal 1: autoint1.e
 Integration File signal 2: autoint2.e
 Quant Time: Oct 10 04:26:18 2019
 Quant Method : Z:\pestpcbsrv\HPCHEM1\ECD_Q\Method\PQ100819CLP.M
 Quant Title : GC EXTRACTABLES
 QLast Update : Thu Oct 10 02:55:10 2019
 Response via : Initial Calibration
 Integrator: ChemStation

Volume Inj. : 1 µl
 Signal #1 Phase : ZB MR1 Signal #2 Phase: ZB MR2
 Signal #1 Info : 30Mx0.32mmx 0.5µm Signal #2 Info : 30M x 0.32mm x 0.25µm

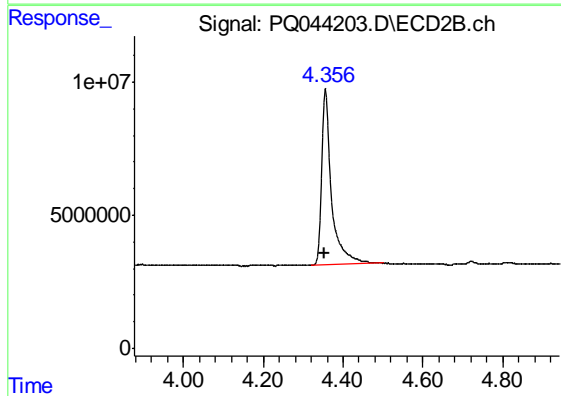




#1 Tetrachloro-m-xylene

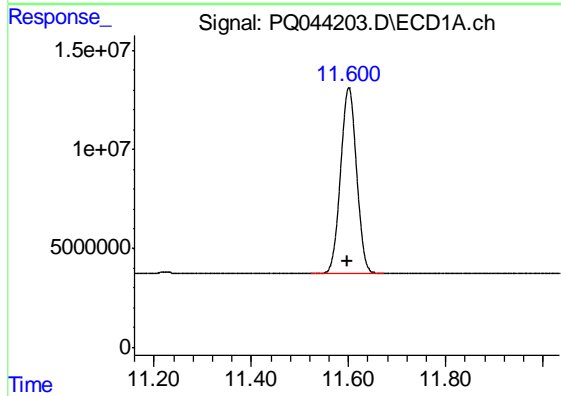
R.T.: 5.319 min
 Delta R.T.: 0.002 min
 Response: 97341488
 Conc: 25.04 ng/ml

Instrument :
 ECD_Q
 ClientSampleId :
 AR1254309



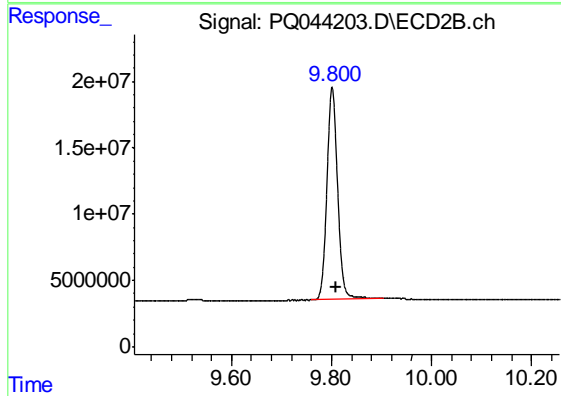
#1 Tetrachloro-m-xylene

R.T.: 4.356 min
 Delta R.T.: 0.000 min
 Response: 112492375
 Conc: 25.20 ng/ml



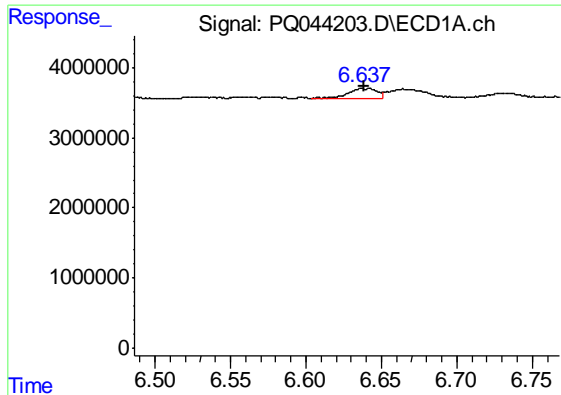
#2 Decachlorobiphenyl

R.T.: 11.601 min
 Delta R.T.: 0.002 min
 Response: 213564319
 Conc: 39.86 ng/ml



#2 Decachlorobiphenyl

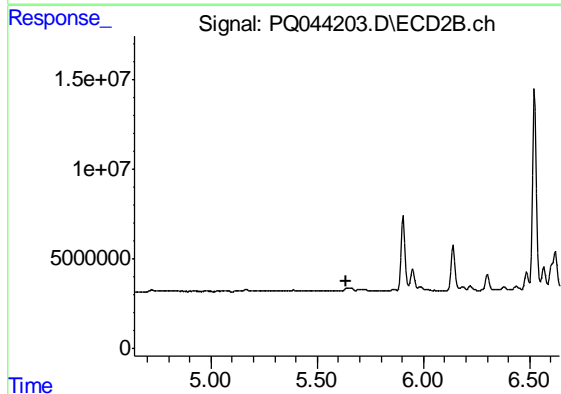
R.T.: 9.801 min
 Delta R.T.: -0.007 min
 Response: 238413078
 Conc: 39.86 ng/ml



#3 AR-1016-1

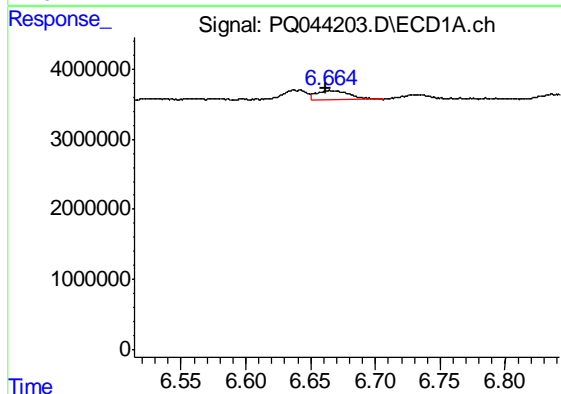
R.T.: 6.642 min
 Delta R.T.: 0.003 min
 Response: 1787181
 Conc: 15.75 ng/ml

Instrument :
 ECD_Q
 ClientSampleId :
 AR1254309



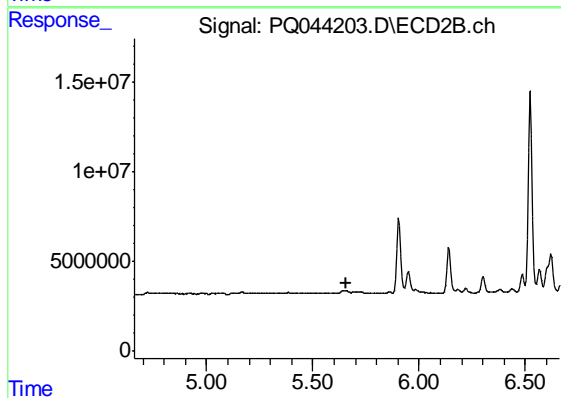
#3 AR-1016-1

R.T.: 0.000 min
 Exp R.T. : 5.640 min
 Response: 0
 Conc: N.D.



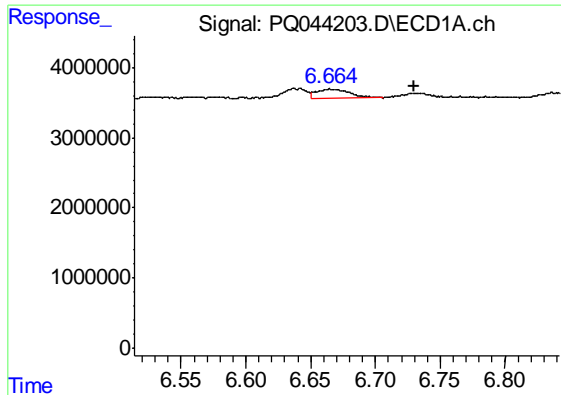
#4 AR-1016-2

R.T.: 6.666 min
 Delta R.T.: 0.004 min
 Response: 2227613
 Conc: 13.81 ng/ml



#4 AR-1016-2

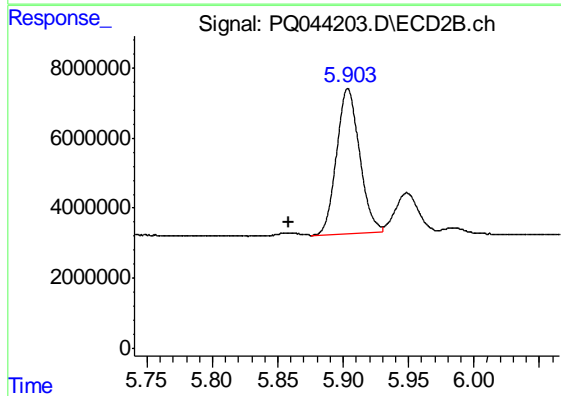
R.T.: 0.000 min
 Exp R.T. : 5.660 min
 Response: 0
 Conc: N.D.



#5 AR-1016-3

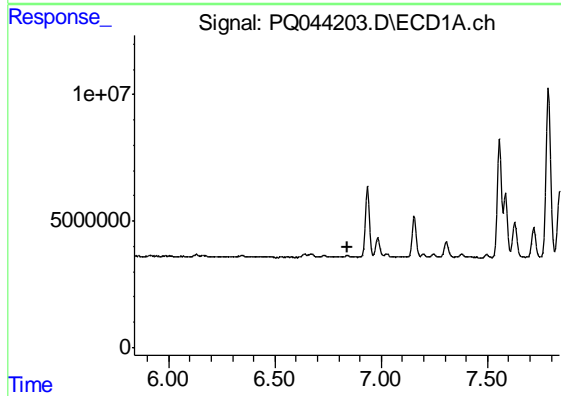
R.T.: 6.666 min
 Delta R.T.: -0.064 min
 Response: 2227613
 Conc: 21.89 ng/ml

Instrument :
 ECD_Q
 ClientSampled :
 AR1254309



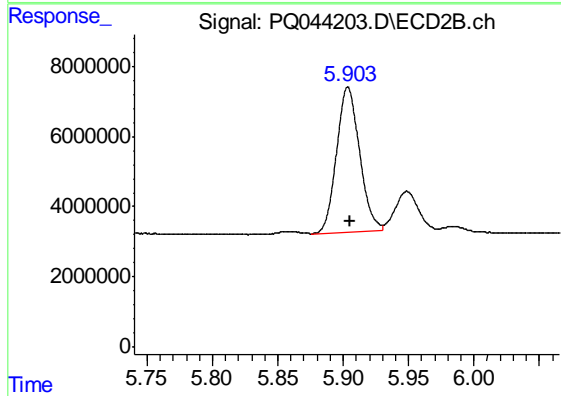
#5 AR-1016-3

R.T.: 5.904 min
 Delta R.T.: 0.046 min
 Response: 50901665
 Conc: 487.77 ng/ml



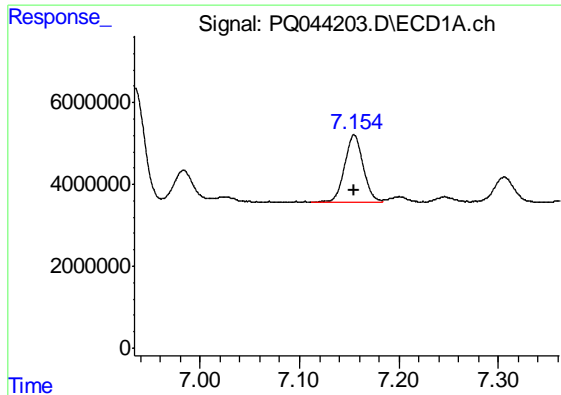
#6 AR-1016-4

R.T.: 0.000 min
 Exp R.T. : 6.839 min
 Response: 0
 Conc: N.D.



#6 AR-1016-4

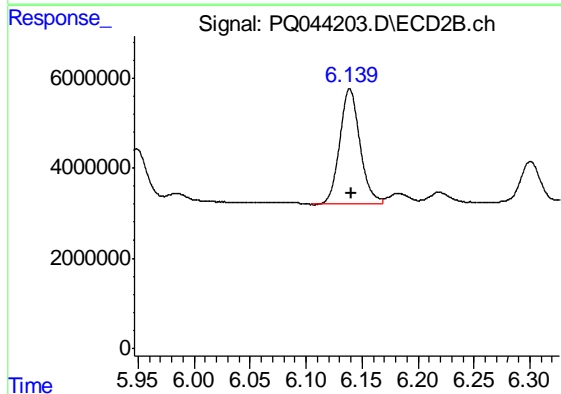
R.T.: 5.904 min
 Delta R.T.: -0.002 min
 Response: 50901665
 Conc: 544.67 ng/ml



#7 AR-1016-5

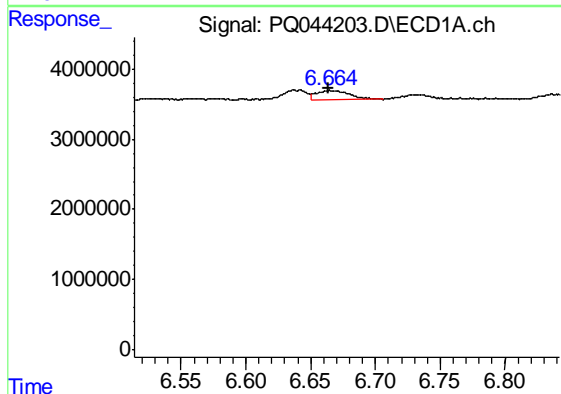
R.T.: 7.155 min
 Delta R.T.: 0.000 min
 Response: 21187567
 Conc: 280.13 ng/ml

Instrument :
 ECD_Q
 ClientSampleId :
 AR1254309



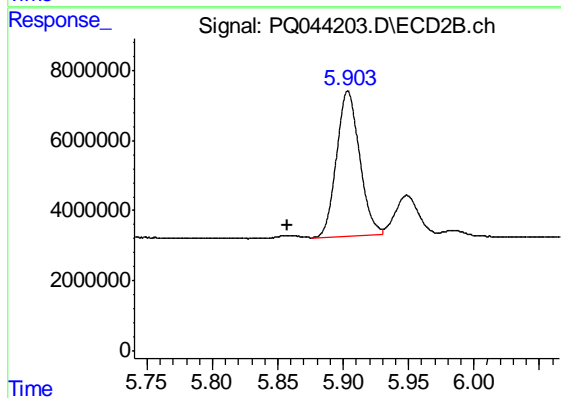
#7 AR-1016-5

R.T.: 6.139 min
 Delta R.T.: -0.002 min
 Response: 32128702
 Conc: 262.75 ng/ml



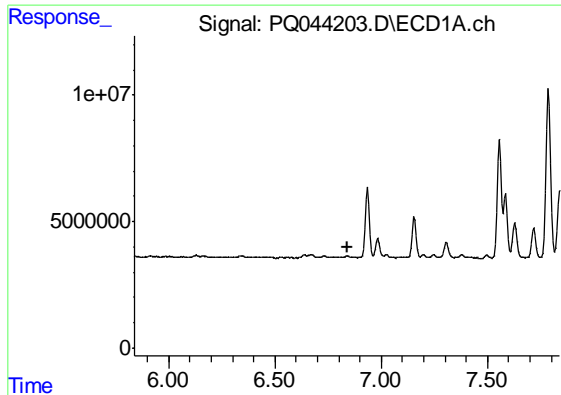
#13 AR-1232-3

R.T.: 6.666 min
 Delta R.T.: 0.003 min
 Response: 2227613
 Conc: 29.04 ng/ml



#13 AR-1232-3

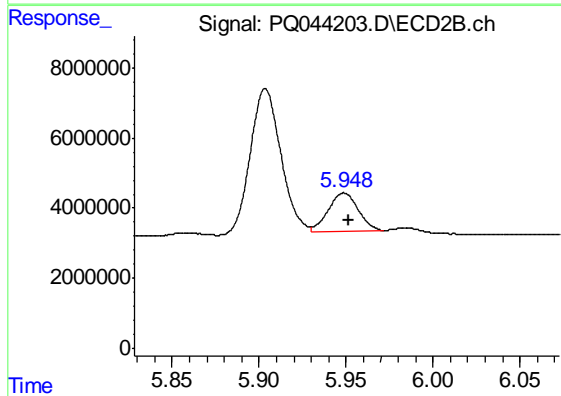
R.T.: 5.904 min
 Delta R.T.: 0.046 min
 Response: 50901665
 Conc: 1030.02 ng/ml



#14 AR-1232-4

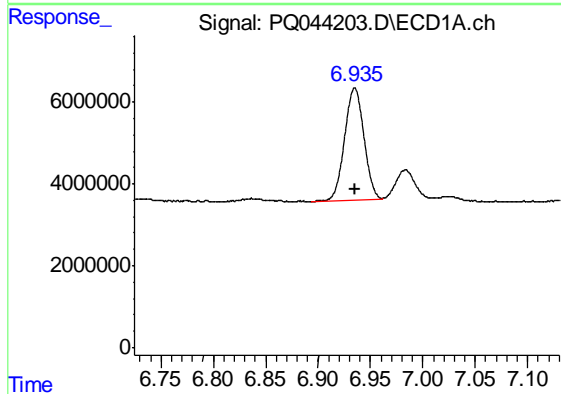
R.T.: 0.000 min
 Exp R.T. : 6.839 min
 Response: 0
 Conc: N.D.

Instrument :
 ECD_Q
 ClientSampleId :
 AR1254309



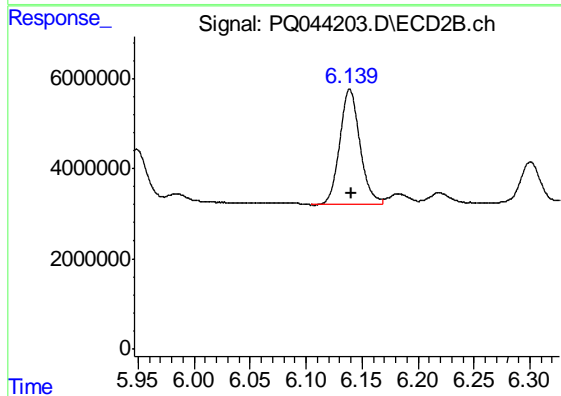
#14 AR-1232-4

R.T.: 5.949 min
 Delta R.T.: -0.003 min
 Response: 13244521
 Conc: 280.83 ng/ml



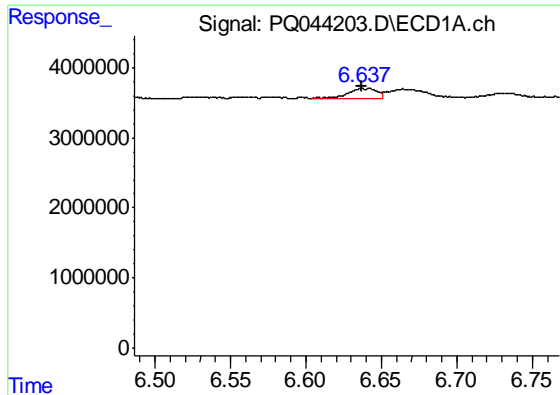
#15 AR-1232-5

R.T.: 6.935 min
 Delta R.T.: 0.000 min
 Response: 35581650
 Conc: 1261.97 ng/ml



#15 AR-1232-5

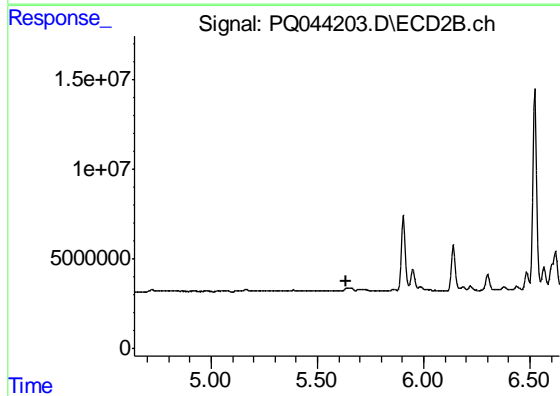
R.T.: 6.139 min
 Delta R.T.: -0.002 min
 Response: 32128702
 Conc: 587.75 ng/ml



#16 AR-1242-1

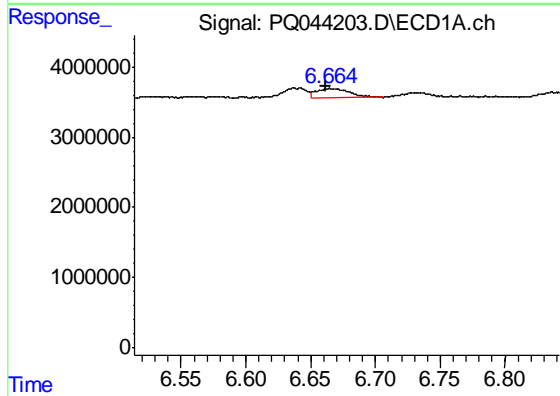
R.T.: 6.642 min
 Delta R.T.: 0.005 min
 Response: 1787181
 Conc: 18.31 ng/ml

Instrument :
 ECD_Q
 ClientSampleId :
 AR1254309



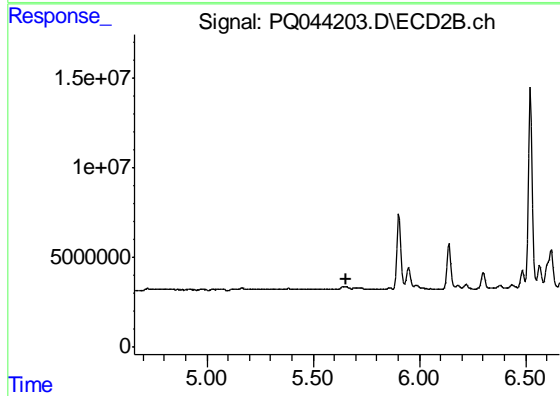
#16 AR-1242-1

R.T.: 0.000 min
 Exp R.T. : 5.639 min
 Response: 0
 Conc: N.D.



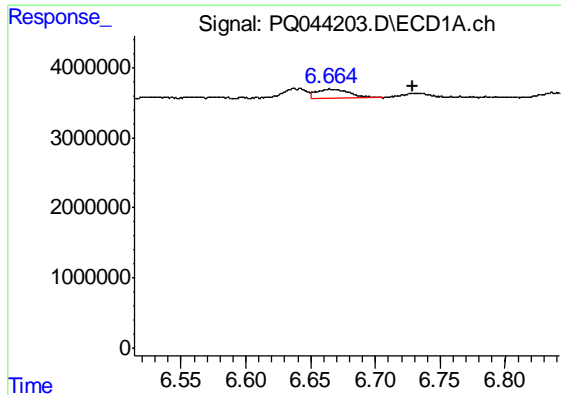
#17 AR-1242-2

R.T.: 6.666 min
 Delta R.T.: 0.004 min
 Response: 2227613
 Conc: 16.02 ng/ml



#17 AR-1242-2

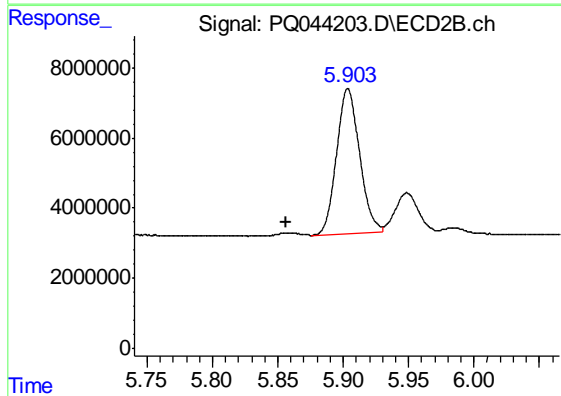
R.T.: 0.000 min
 Exp R.T. : 5.659 min
 Response: 0
 Conc: N.D.



#18 AR-1242-3

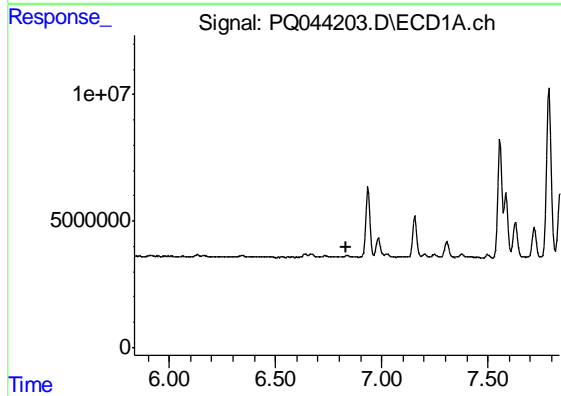
R.T.: 6.666 min
 Delta R.T.: -0.063 min
 Response: 2227613
 Conc: 25.07 ng/ml

Instrument :
 ECD_Q
 ClientSampled :
 AR1254309



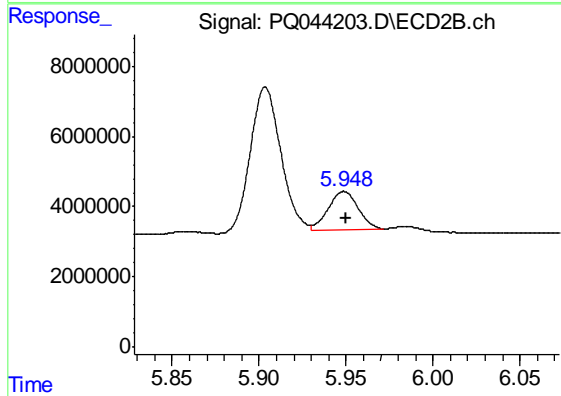
#18 AR-1242-3

R.T.: 5.904 min
 Delta R.T.: 0.047 min
 Response: 50901665
 Conc: 550.36 ng/ml



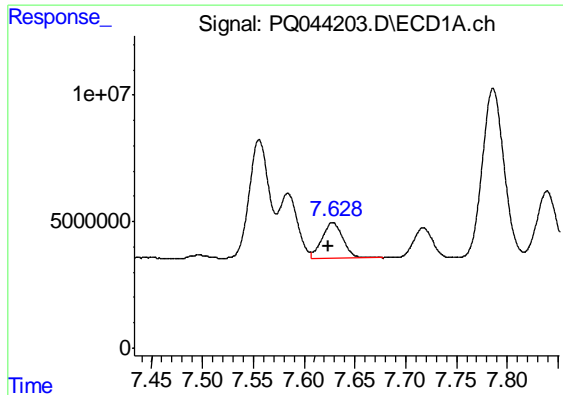
#19 AR-1242-4

R.T.: 0.000 min
 Exp R.T. : 6.836 min
 Response: 0
 Conc: N.D.



#19 AR-1242-4

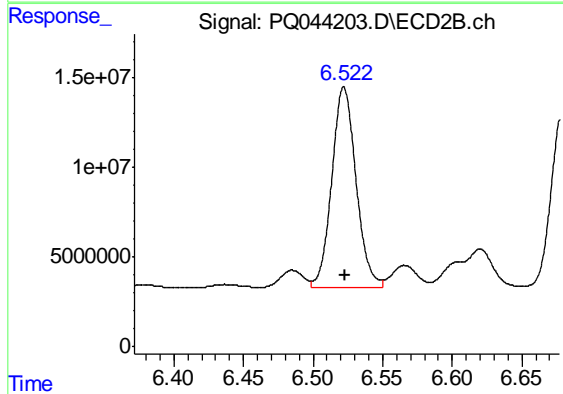
R.T.: 5.949 min
 Delta R.T.: -0.001 min
 Response: 13244521
 Conc: 134.75 ng/ml



#20 AR-1242-5

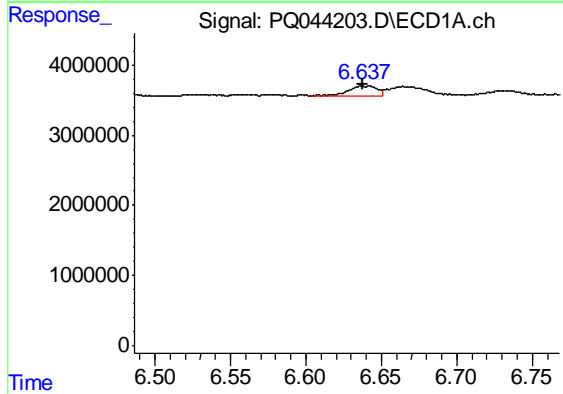
R.T.: 7.628 min
 Delta R.T.: 0.004 min
 Response: 20009848
 Conc: 263.20 ng/ml

Instrument :
 ECD_Q
 ClientSampled :
 AR1254309



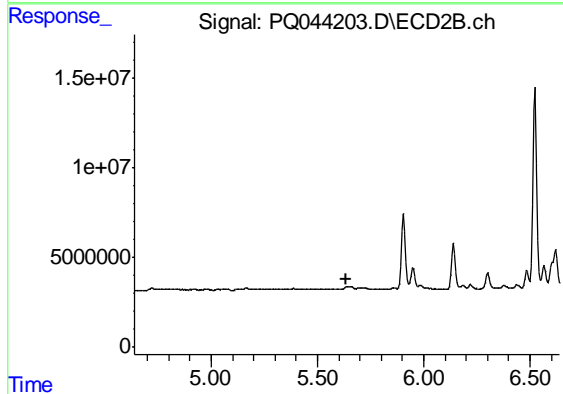
#20 AR-1242-5

R.T.: 6.522 min
 Delta R.T.: 0.000 min
 Response: 135765581
 Conc: 1065.45 ng/ml



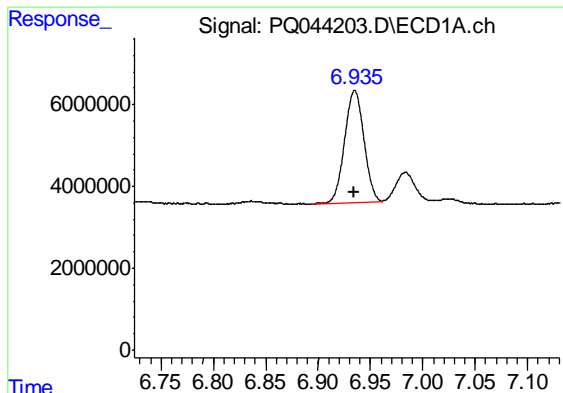
#21 AR-1248-1

R.T.: 6.642 min
 Delta R.T.: 0.004 min
 Response: 1787181
 Conc: 24.36 ng/ml



#21 AR-1248-1

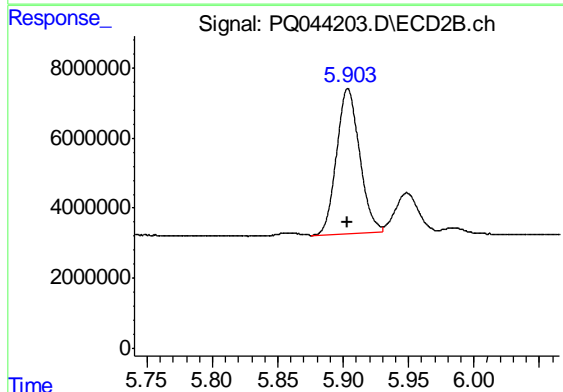
R.T.: 0.000 min
 Exp R.T. : 5.638 min
 Response: 0
 Conc: N.D.



#22 AR-1248-2

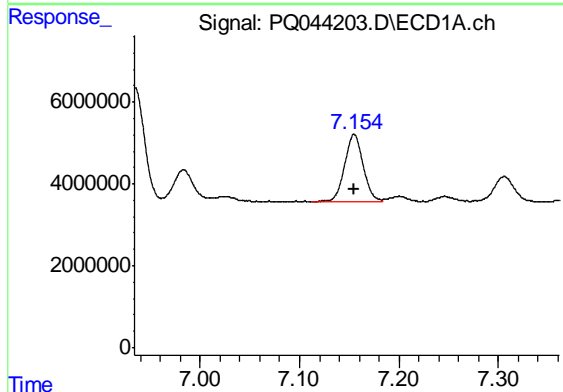
R.T.: 6.935 min
 Delta R.T.: 0.001 min
 Response: 35581650
 Conc: 359.19 ng/ml

Instrument :
 ECD_Q
 ClientSampleId :
 AR1254309



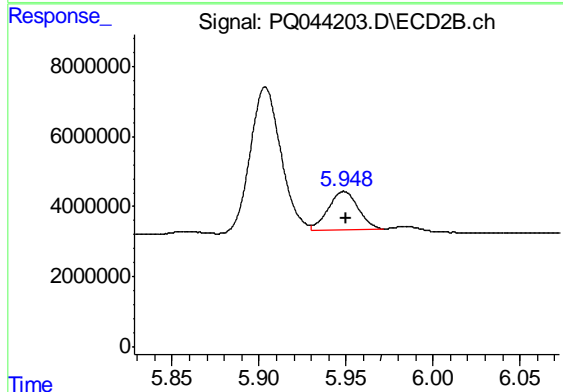
#22 AR-1248-2

R.T.: 5.904 min
 Delta R.T.: 0.000 min
 Response: 50901665
 Conc: 367.24 ng/ml



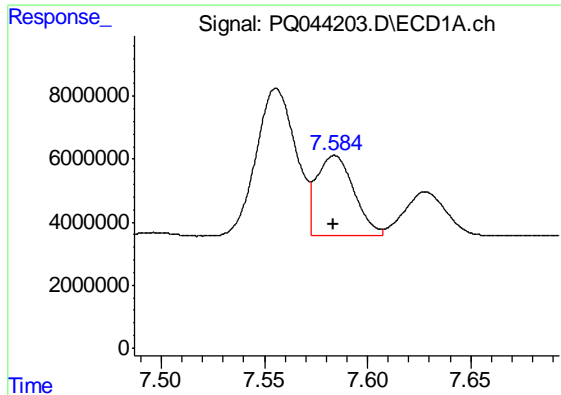
#23 AR-1248-3

R.T.: 7.155 min
 Delta R.T.: 0.000 min
 Response: 21187567
 Conc: 196.18 ng/ml



#23 AR-1248-3

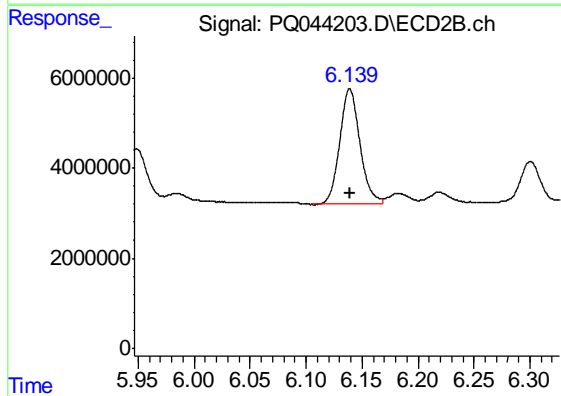
R.T.: 5.949 min
 Delta R.T.: -0.001 min
 Response: 13244521
 Conc: 93.65 ng/ml



#24 AR-1248-4

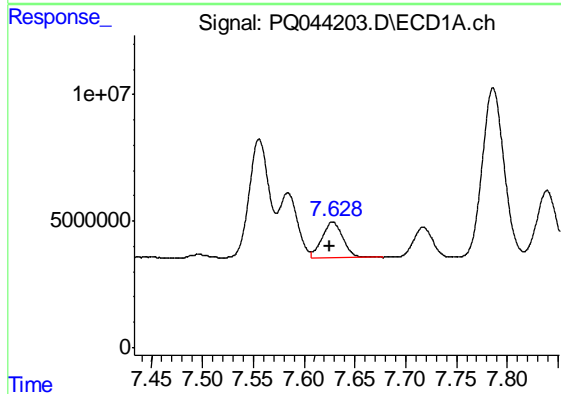
R.T.: 7.584 min
 Delta R.T.: 0.000 min
 Response: 32068148
 Conc: 254.71 ng/ml

Instrument :
 ECD_Q
 ClientSampleId :
 AR1254309



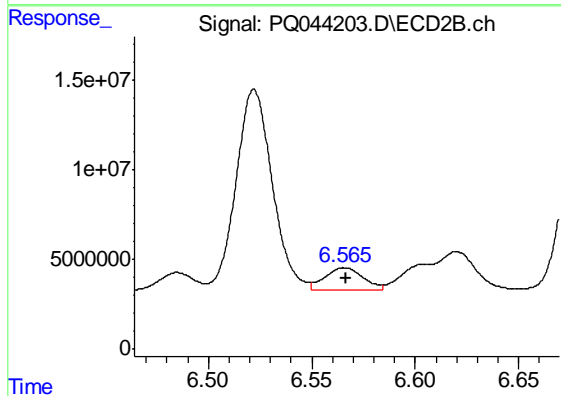
#24 AR-1248-4

R.T.: 6.139 min
 Delta R.T.: 0.000 min
 Response: 32128702
 Conc: 187.05 ng/ml



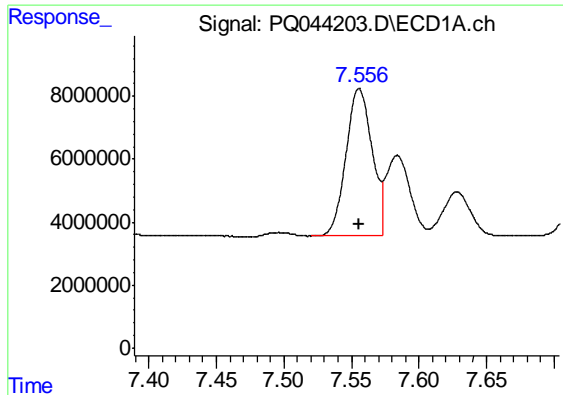
#25 AR-1248-5

R.T.: 7.628 min
 Delta R.T.: 0.003 min
 Response: 20009848
 Conc: 165.26 ng/ml



#25 AR-1248-5

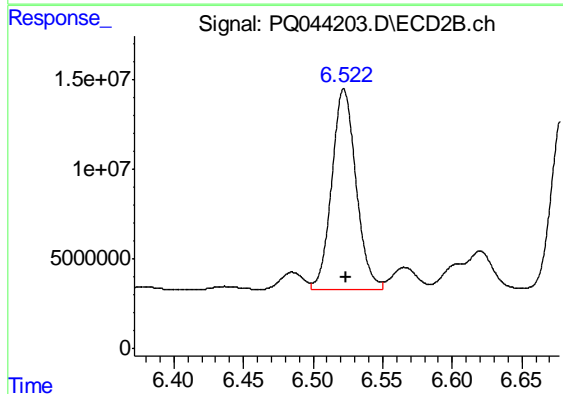
R.T.: 6.566 min
 Delta R.T.: 0.000 min
 Response: 15622500
 Conc: 93.31 ng/ml



#26 AR-1254-1

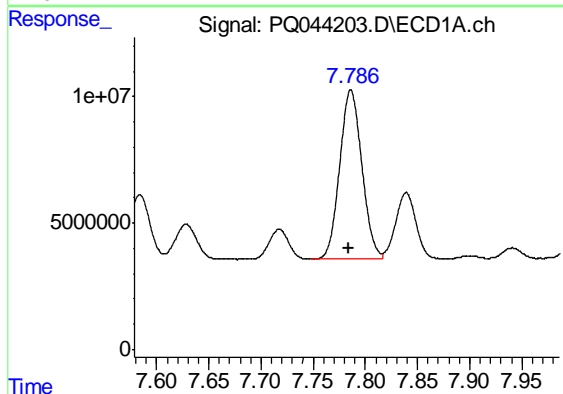
R.T.: 7.556 min
Delta R.T.: 0.000 min
Response: 63053831
Conc: 468.60 ng/ml

Instrument :
ECD_Q
ClientSampleId :
AR1254309



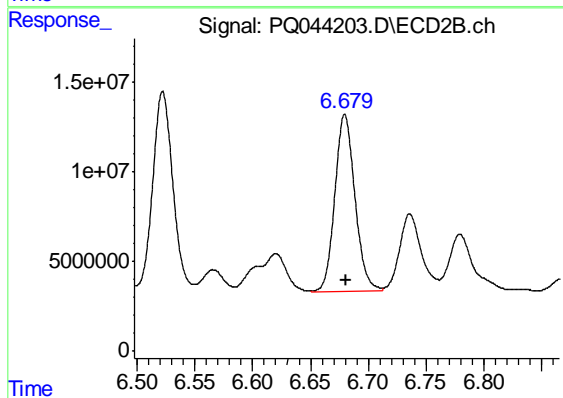
#26 AR-1254-1

R.T.: 6.522 min
Delta R.T.: -0.001 min
Response: 135765581
Conc: 465.48 ng/ml



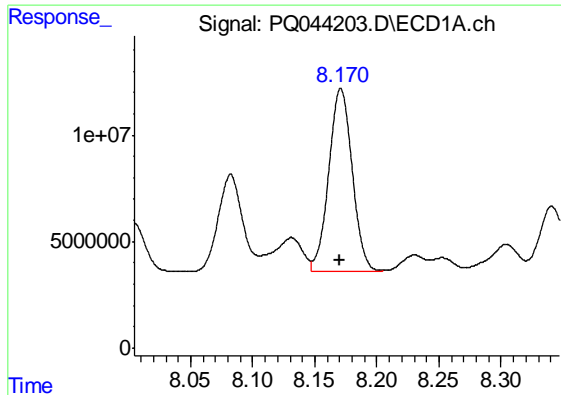
#27 AR-1254-2

R.T.: 7.786 min
Delta R.T.: 0.001 min
Response: 99400736
Conc: 465.30 ng/ml



#27 AR-1254-2

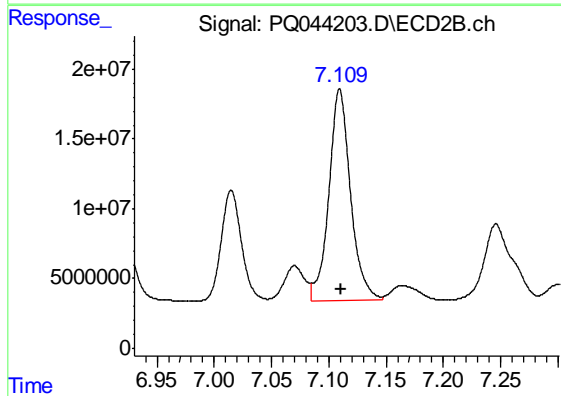
R.T.: 6.680 min
Delta R.T.: -0.002 min
Response: 119605959
Conc: 458.09 ng/ml



#28 AR-1254-3

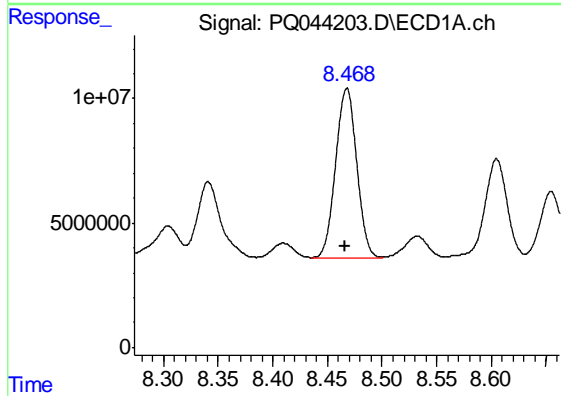
R.T.: 8.171 min
 Delta R.T.: 0.001 min
 Response: 113035019
 Conc: 459.40 ng/ml

Instrument :
 ECD_Q
 ClientSampleId :
 AR1254309



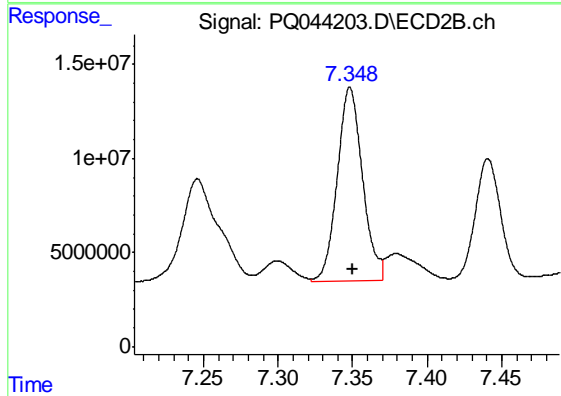
#28 AR-1254-3

R.T.: 7.109 min
 Delta R.T.: -0.002 min
 Response: 199423365
 Conc: 456.44 ng/ml



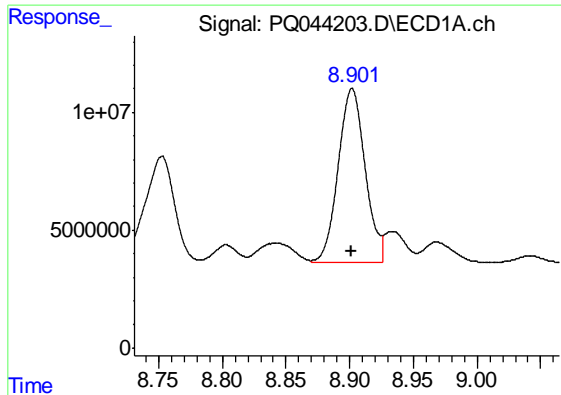
#29 AR-1254-4

R.T.: 8.468 min
 Delta R.T.: 0.001 min
 Response: 91648856
 Conc: 456.97 ng/ml



#29 AR-1254-4

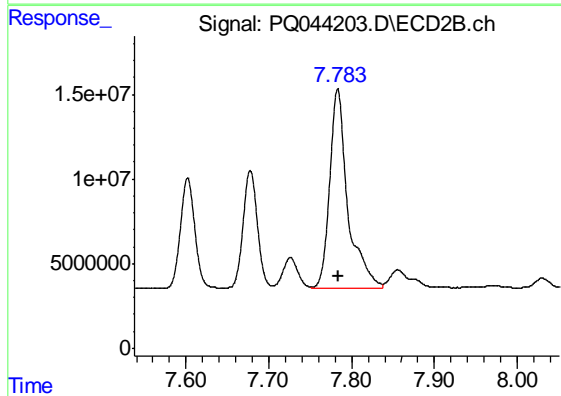
R.T.: 7.348 min
 Delta R.T.: -0.002 min
 Response: 121399555
 Conc: 451.93 ng/ml



#30 AR-1254-5

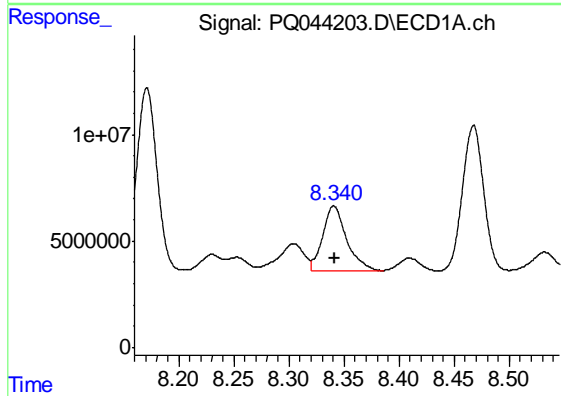
R.T.: 8.902 min
Delta R.T.: 0.001 min
Response: 107977262
Conc: 451.14 ng/ml

Instrument :
ECD_Q
ClientSampleId :
AR1254309



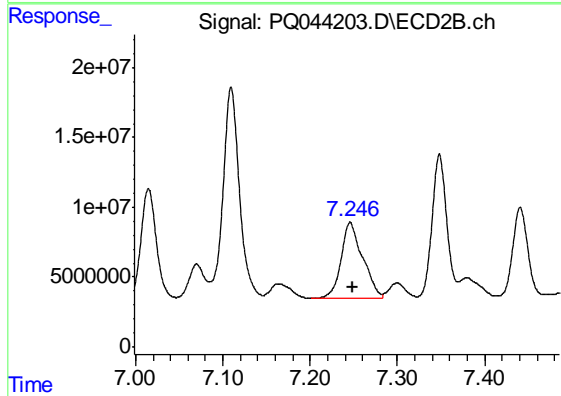
#30 AR-1254-5

R.T.: 7.783 min
Delta R.T.: -0.002 min
Response: 178046619
Conc: 445.27 ng/ml



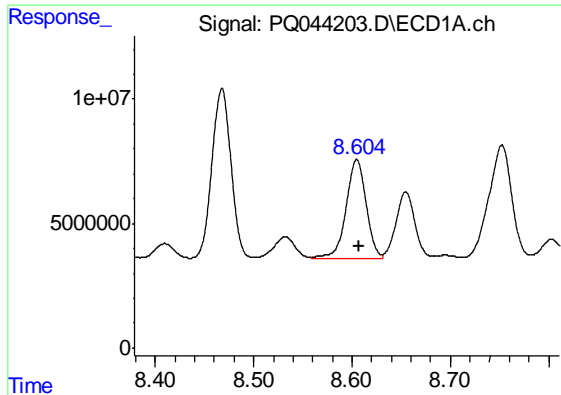
#31 AR-1260-1

R.T.: 8.341 min
Delta R.T.: 0.000 min
Response: 45994520
Conc: 305.54 ng/ml



#31 AR-1260-1

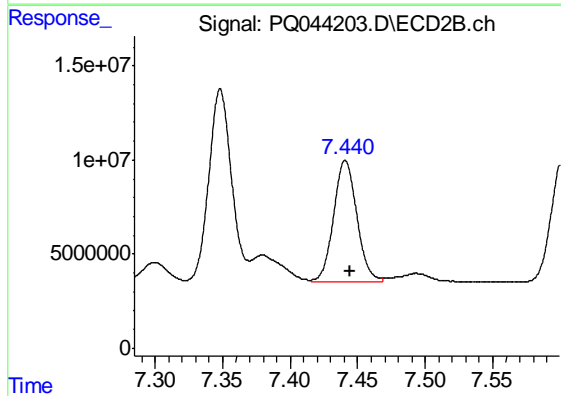
R.T.: 7.246 min
Delta R.T.: -0.003 min
Response: 93979027
Conc: 386.52 ng/ml



#32 AR-1260-2

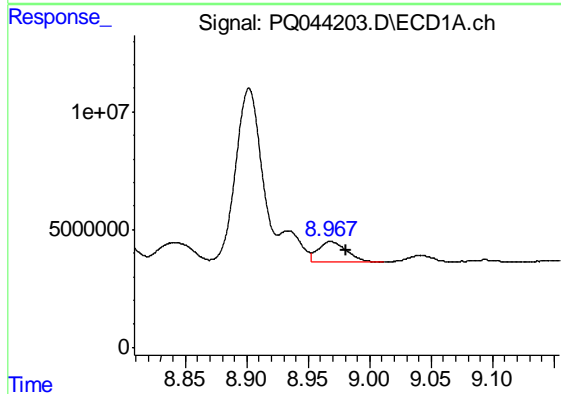
R.T.: 8.605 min
 Delta R.T.: -0.002 min
 Response: 55806399
 Conc: 283.55 ng/ml

Instrument :
 ECD_Q
 ClientSampled :
 AR1254309



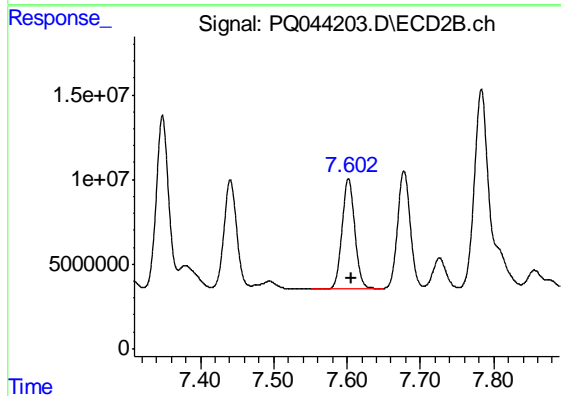
#32 AR-1260-2

R.T.: 7.441 min
 Delta R.T.: -0.003 min
 Response: 78006472
 Conc: 258.42 ng/ml



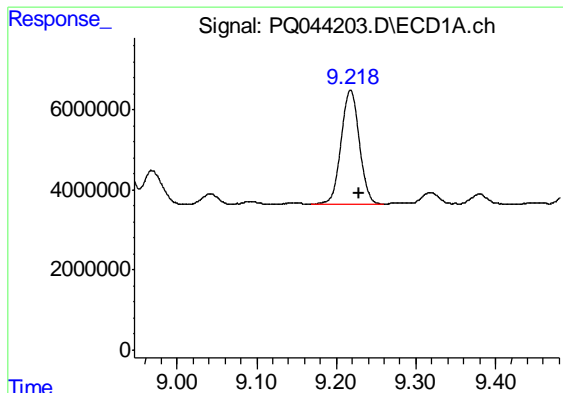
#33 AR-1260-3

R.T.: 8.968 min
 Delta R.T.: -0.012 min
 Response: 13765652
 Conc: 85.86 ng/ml



#33 AR-1260-3

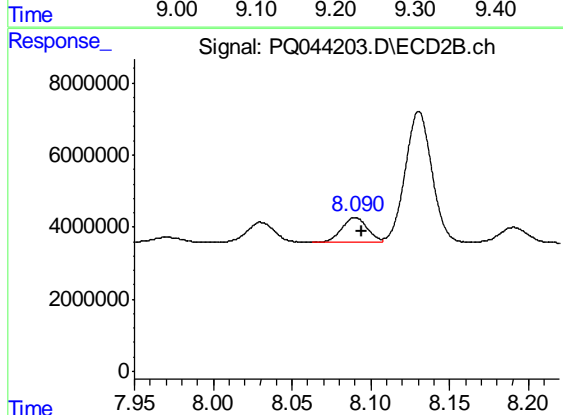
R.T.: 7.602 min
 Delta R.T.: -0.004 min
 Response: 78579482
 Conc: 279.23 ng/ml



#34 AR-1260-4

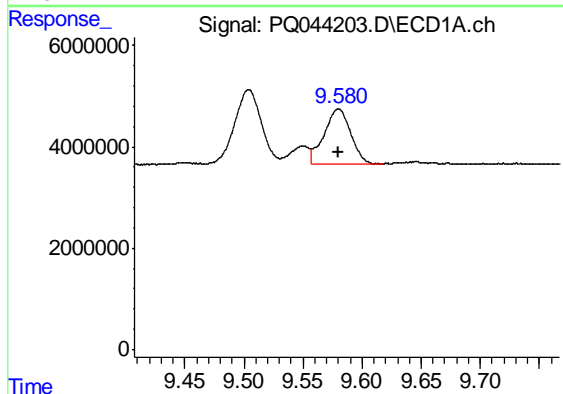
R.T.: 9.218 min
Delta R.T.: -0.010 min
Response: 45579798
Conc: 233.44 ng/ml

Instrument :
ECD_Q
ClientSampleId :
AR1254309



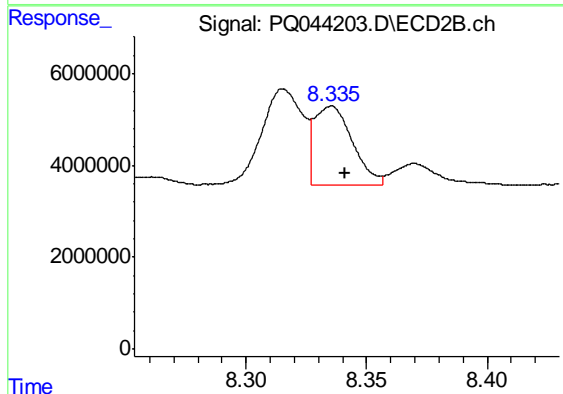
#34 AR-1260-4

R.T.: 8.090 min
Delta R.T.: -0.004 min
Response: 8093022
Conc: 32.17 ng/ml



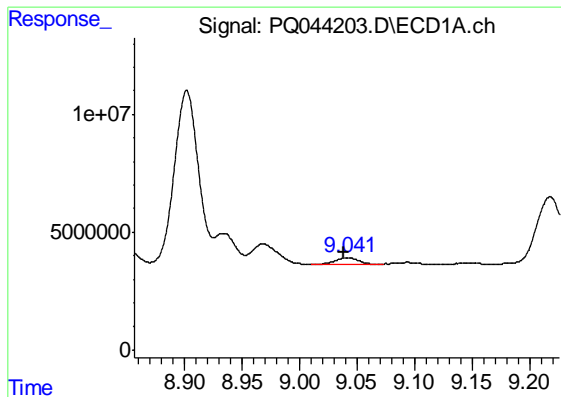
#35 AR-1260-5

R.T.: 9.580 min
Delta R.T.: 0.000 min
Response: 16988691
Conc: 37.16 ng/ml



#35 AR-1260-5

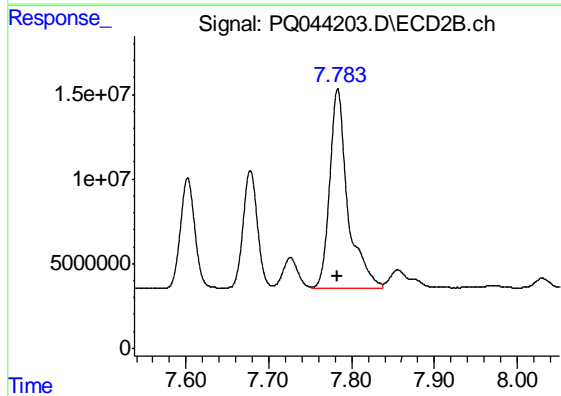
R.T.: 8.335 min
Delta R.T.: -0.006 min
Response: 18797809
Conc: 29.33 ng/ml



#36 AR-1262-1

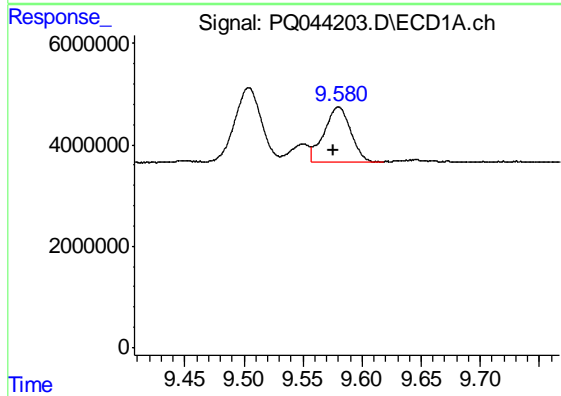
R.T.: 9.042 min
 Delta R.T.: 0.004 min
 Response: 3777104
 Conc: 34.78 ng/ml

Instrument :
 ECD_Q
 ClientSampleId :
 AR1254309



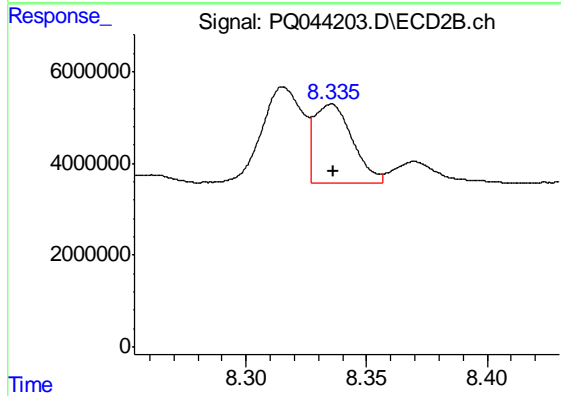
#36 AR-1262-1

R.T.: 7.783 min
 Delta R.T.: 0.001 min
 Response: 178046619
 Conc: 912.37 ng/ml



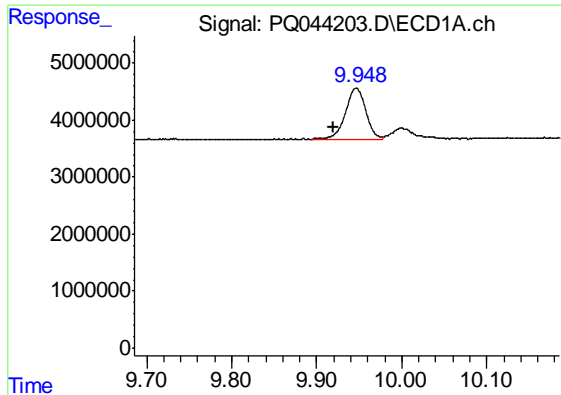
#37 AR-1262-2

R.T.: 9.580 min
 Delta R.T.: 0.004 min
 Response: 16988691
 Conc: 29.50 ng/ml



#37 AR-1262-2

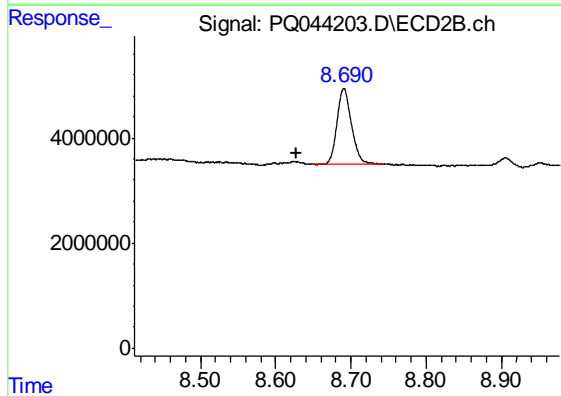
R.T.: 8.335 min
 Delta R.T.: 0.000 min
 Response: 18797809
 Conc: 23.76 ng/ml



#38 AR-1262-3

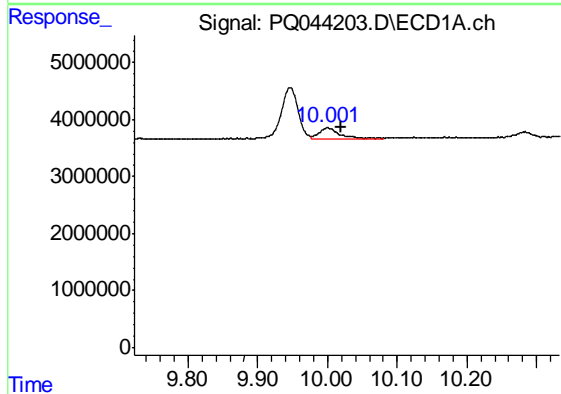
R.T.: 9.947 min
 Delta R.T.: 0.026 min
 Response: 14815728
 Conc: 35.71 ng/ml

Instrument :
 ECD_Q
 ClientSampleId :
 AR1254309



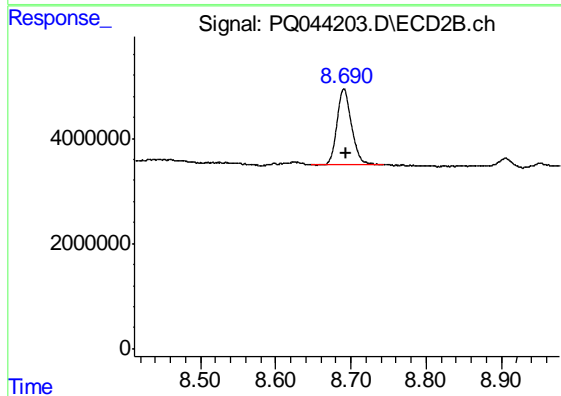
#38 AR-1262-3

R.T.: 8.691 min
 Delta R.T.: 0.064 min
 Response: 19284123
 Conc: 60.81 ng/ml



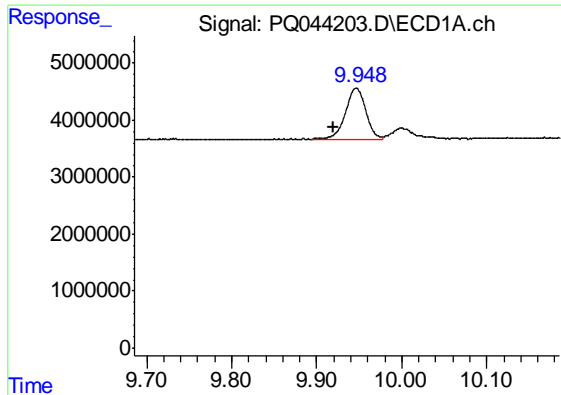
#39 AR-1262-4

R.T.: 10.000 min
 Delta R.T.: -0.020 min
 Response: 3799507
 Conc: 12.06 ng/ml



#39 AR-1262-4

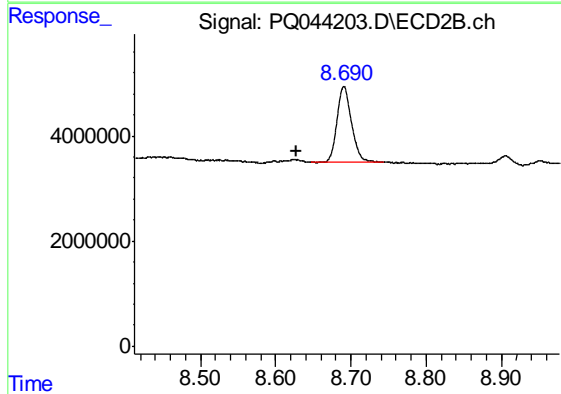
R.T.: 8.691 min
 Delta R.T.: -0.003 min
 Response: 19284123
 Conc: 31.64 ng/ml



#41 AR-1268-1

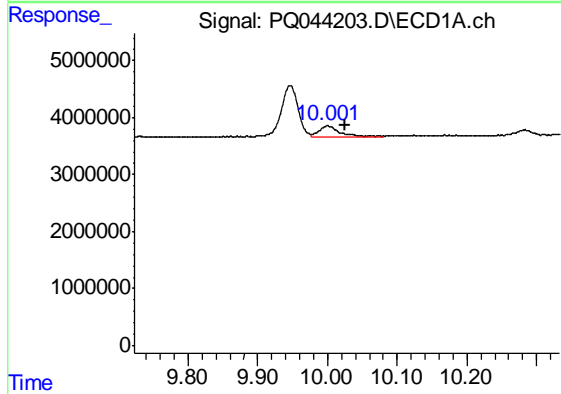
R.T.: 9.947 min
 Delta R.T.: 0.026 min
 Response: 14815728
 Conc: 20.72 ng/ml

Instrument :
 ECD_Q
 ClientSampleId :
 AR1254309



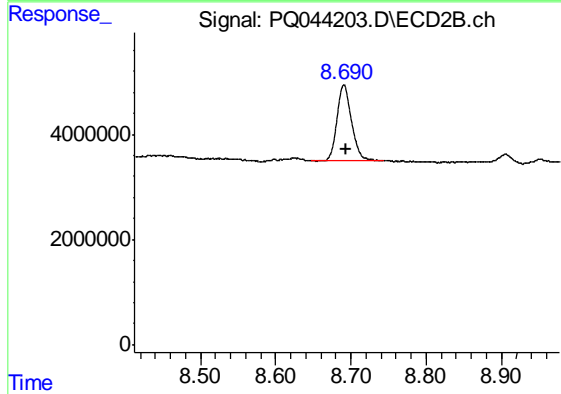
#41 AR-1268-1

R.T.: 8.691 min
 Delta R.T.: 0.063 min
 Response: 19284123
 Conc: 19.99 ng/ml



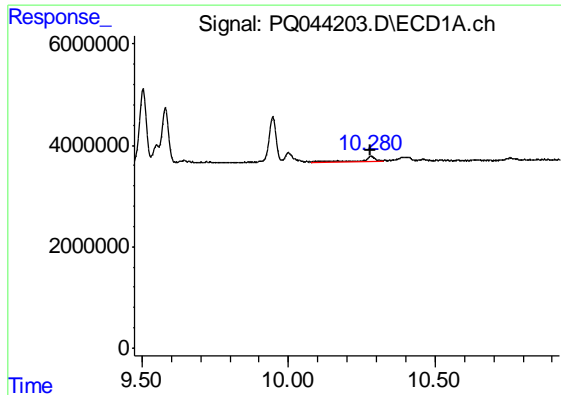
#42 AR-1268-2

R.T.: 10.000 min
 Delta R.T.: -0.025 min
 Response: 3799507
 Conc: 5.59 ng/ml



#42 AR-1268-2

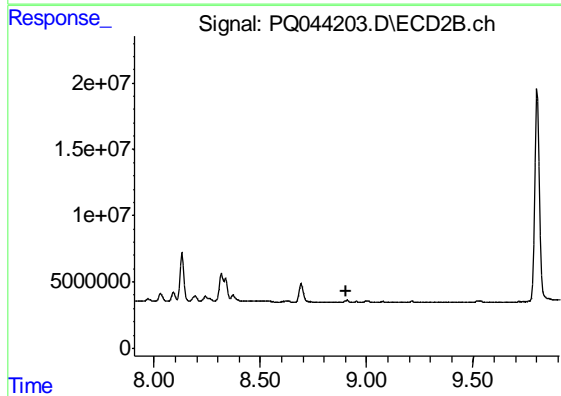
R.T.: 8.691 min
 Delta R.T.: -0.003 min
 Response: 19284123
 Conc: 21.21 ng/ml



#43 AR-1268-3

R.T.: 10.282 min
Delta R.T.: 0.003 min
Response: 2505898
Conc: 4.37 ng/ml

Instrument :
ECD_Q
ClientSampled :
AR1254309



#43 AR-1268-3

R.T.: 0.000 min
Exp R.T. : 8.907 min
Response: 0
Conc: N.D.