

Data Path : Z:\pestpcbsrv\HPCHEM1\ECD_Q\Data\PQ100920\
 Data File : PQ050321.D
 Signal(s) : Signal #1: ECD1A.ch Signal #2: ECD2B.ch
 Acq On : 09 Oct 2020 20:58
 Operator : DD\AJ
 Sample : L4286-03
 Misc :
 ALS Vial : 37 Sample Multiplier: 1

Instrument :
 ECD_Q
 ClientSampleId :
 C0AT4

Integration File signal 1: autoint1.e
 Integration File signal 2: autoint2.e
 Quant Time: Oct 10 04:43:42 2020
 Quant Method : Z:\pestpcbsrv\HPCHEM1\ECD_Q\Method\PQ092420CLP.M
 Quant Title : GC EXTRACTABLES
 QLast Update : Thu Sep 24 08:00:48 2020
 Response via : Initial Calibration
 Integrator: ChemStation

Volume Inj. : 1 µl
 Signal #1 Phase : ZB MR1 Signal #2 Phase: ZB MR2
 Signal #1 Info : 30Mx0.32mmx 0.5µm Signal #2 Info : 30M x 0.32mm x 0.25µm

| Compound | RT#1 | RT#2 | Resp#1 | Resp#2 | ng/ml | ng/ml |
|-----------------------------|--------|--------|----------|----------|--------|----------|
| ----- | | | | | | |
| System Monitoring Compounds | | | | | | |
| 1) SA Tetrachlo... | 5.206 | 4.269 | 276.6E6 | 84505611 | 27.940 | 23.973 |
| 2) SA Decachlor... | 11.392 | 9.617 | 306.7E6 | 222.9E6 | 45.183 | 41.447 |
| Target Compounds | | | | | | |
| 3) L1 AR-1016-1 | 6.532 | 5.527 | 13446299 | 2920896 | 41.615 | 17.573 # |
| 4) L1 AR-1016-2 | 6.532f | 5.527 | 13446299 | 2920896 | 28.604 | 13.074 # |
| 9) L2 AR-1221-2 | 5.563 | 0.000 | 3325525 | 0 | 39.503 | N.D. # |
| 12) L3 AR-1232-2 | 6.293f | 5.527 | 10362315 | 2920896 | 97.502 | 30.786 # |
| 13) L3 AR-1232-3 | 6.532f | 0.000 | 13446299 | 0 | 62.159 | N.D. # |
| 16) L4 AR-1242-1 | 6.532 | 5.527 | 13446299 | 2920896 | 49.854 | 22.982 # |
| 17) L4 AR-1242-2 | 6.532f | 5.527 | 13446299 | 2920896 | 35.609 | 16.818 # |
| 20) L4 AR-1242-5 | 7.486f | 6.367f | 13743577 | 4558441 | 71.347 | 34.195 # |
| 21) L5 AR-1248-1 | 6.532 | 5.527 | 13446299 | 2920896 | 61.842 | 28.527 # |
| 24) L5 AR-1248-4 | 7.486 | 0.000 | 13743577 | 0 | 41.088 | N.D. # |
| 25) L5 AR-1248-5 | 7.486f | 0.000 | 13743577 | 0 | 43.658 | N.D. # |
| 26) L6 AR-1254-1 | 7.486 | 6.367f | 13743577 | 4558441 | 41.665 | 16.450 # |
| 28) L6 AR-1254-3 | 0.000 | 7.021f | 0 | 12088370 | N.D. | 29.472 # |
| 31) L7 AR-1260-1 | 8.177f | 0.000 | 25197057 | 0 | 77.370 | N.D. # |
| 35) L7 AR-1260-5 | 0.000 | 8.177 | 0 | 3981533 | N.D. | 5.165 # |
| 37) L8 AR-1262-2 | 0.000 | 8.177 | 0 | 3981533 | N.D. | 4.488 # |

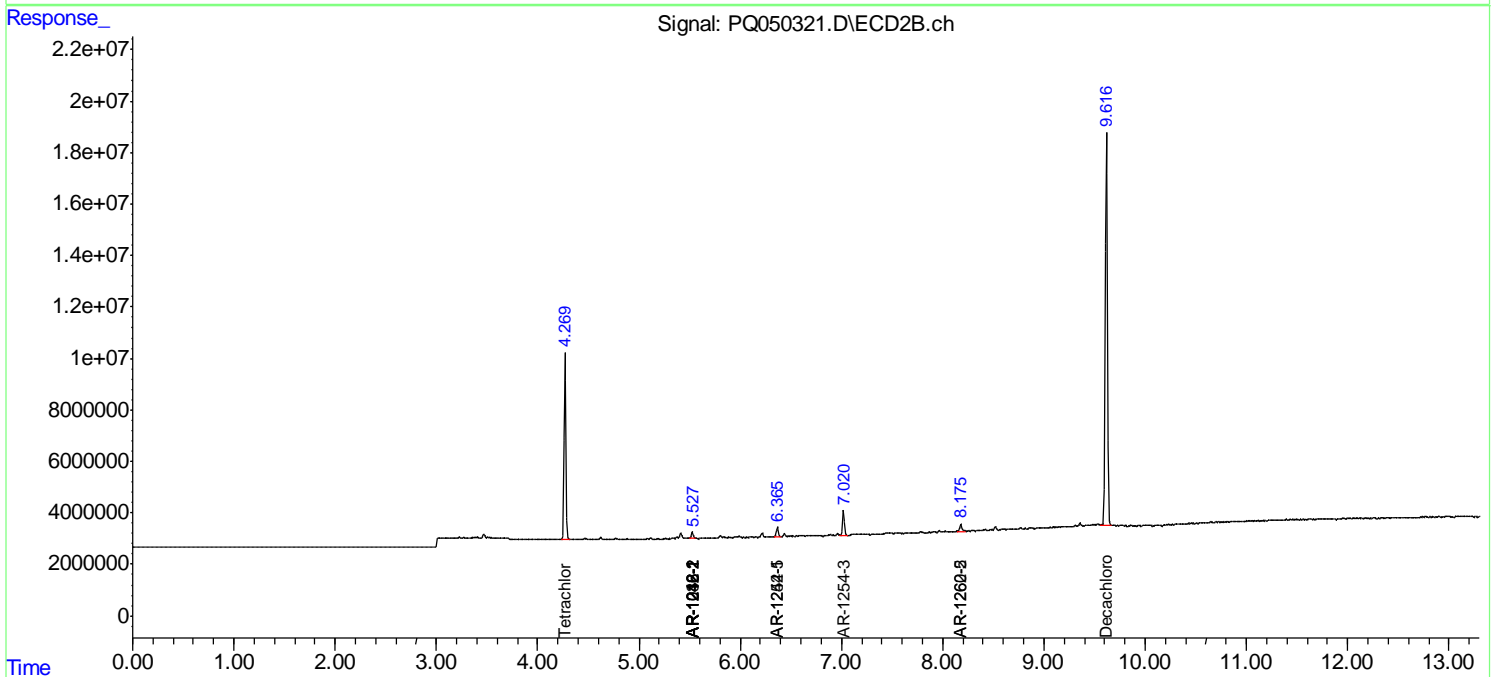
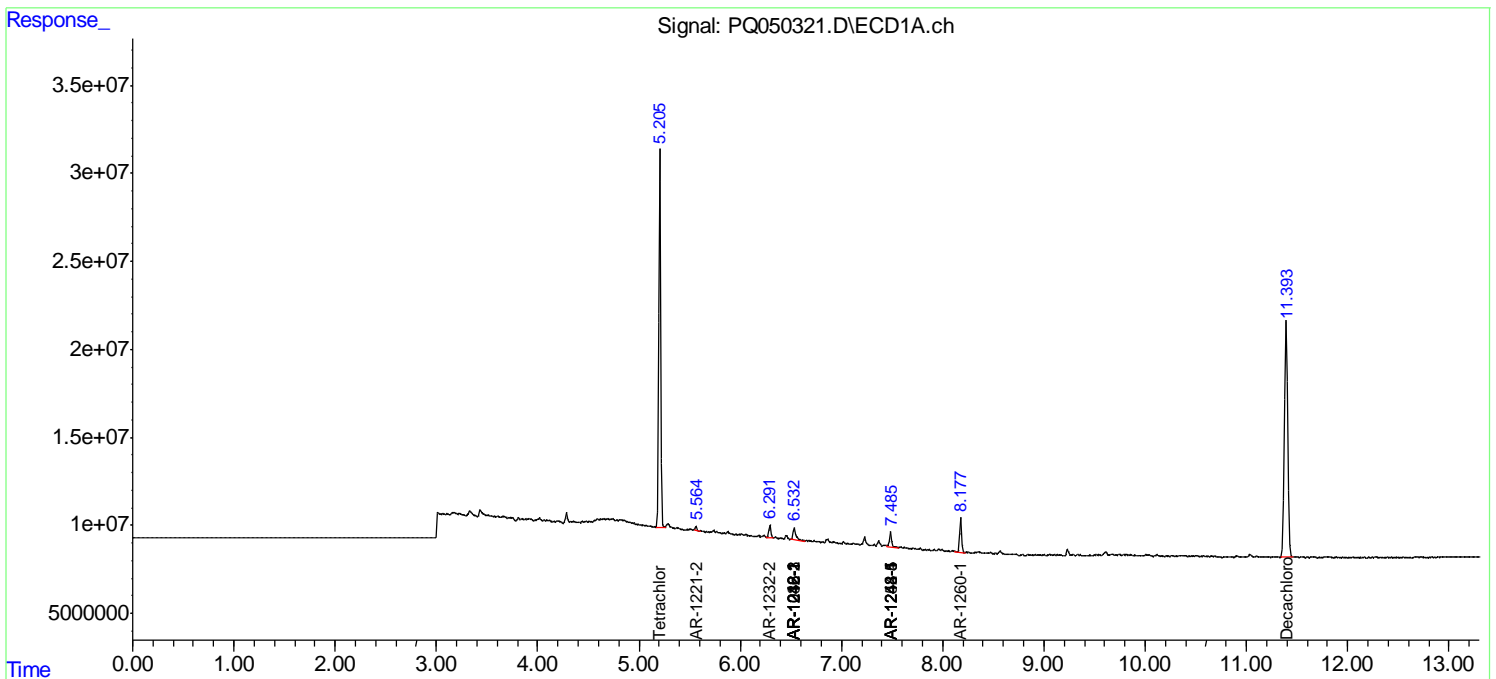
(f)=RT Delta > 1/2 Window (#)=Amounts differ by > 25% (m)=manual int.

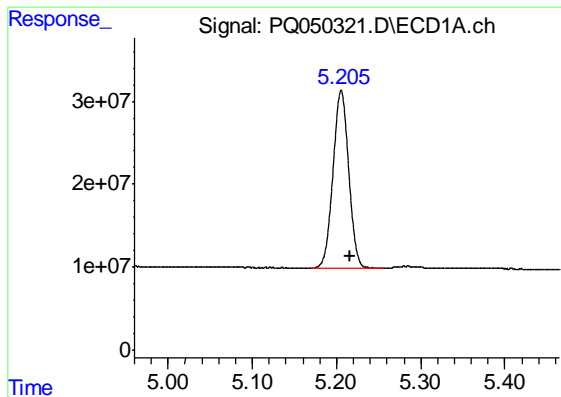
Data Path : Z:\pestpcbsrv\HPCHEM1\ECD_Q\Data\PQ100920\
 Data File : PQ050321.D
 Signal(s) : Signal #1: ECD1A.ch Signal #2: ECD2B.ch
 Acq On : 09 Oct 2020 20:58
 Operator : DD\AJ
 Sample : L4286-03
 Misc :
 ALS Vial : 37 Sample Multiplier: 1

Instrument :
 ECD_Q
 ClientSampled :
 C0AT4

Integration File signal 1: autoint1.e
 Integration File signal 2: autoint2.e
 Quant Time: Oct 10 04:43:42 2020
 Quant Method : Z:\pestpcbsrv\HPCHEM1\ECD_Q\Method\PQ092420CLP.M
 Quant Title : GC EXTRACTABLES
 QLast Update : Thu Sep 24 08:00:48 2020
 Response via : Initial Calibration
 Integrator: ChemStation

Volume Inj. : 1 µl
 Signal #1 Phase : ZB MR1 Signal #2 Phase: ZB MR2
 Signal #1 Info : 30Mx0.32mmx 0.5µm Signal #2 Info : 30M x 0.32mm x 0.25µm

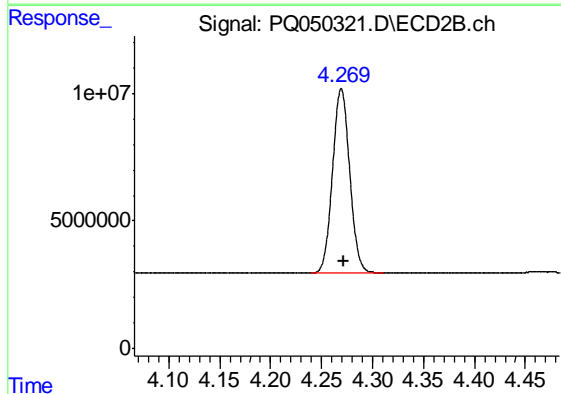




#1 Tetrachloro-m-xylene

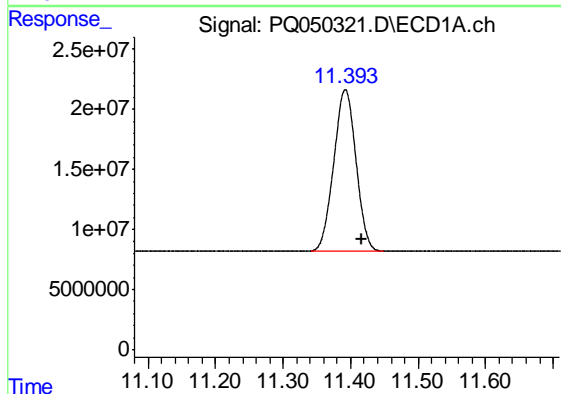
R.T.: 5.206 min
 Delta R.T.: -0.010 min
 Response: 276596224
 Conc: 27.94 ng/ml

Instrument :
 ECD_Q
 ClientSampleId :
 C0AT4



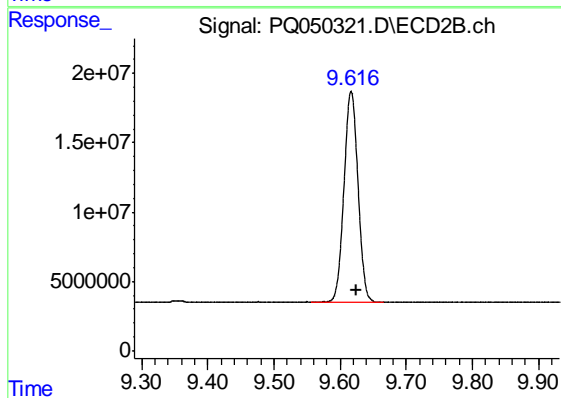
#1 Tetrachloro-m-xylene

R.T.: 4.269 min
 Delta R.T.: -0.002 min
 Response: 84505611
 Conc: 23.97 ng/ml



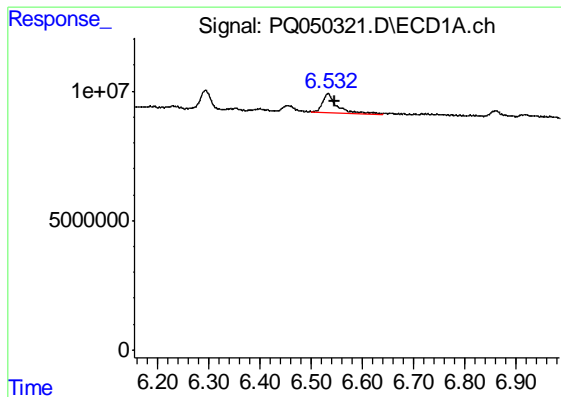
#2 Decachlorobiphenyl

R.T.: 11.392 min
 Delta R.T.: -0.024 min
 Response: 306737401
 Conc: 45.18 ng/ml



#2 Decachlorobiphenyl

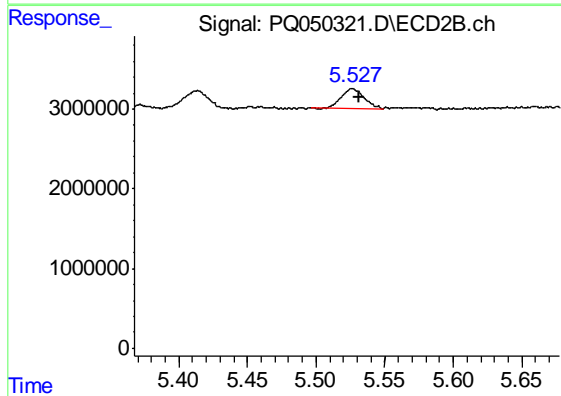
R.T.: 9.617 min
 Delta R.T.: -0.009 min
 Response: 222940226
 Conc: 41.45 ng/ml



#3 AR-1016-1

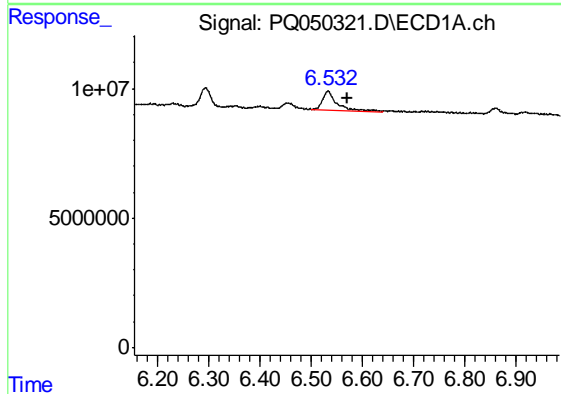
R.T.: 6.532 min
 Delta R.T.: -0.014 min
 Response: 13446299
 Conc: 41.61 ng/ml

Instrument :
 ECD_Q
 ClientSampled :
 C0AT4



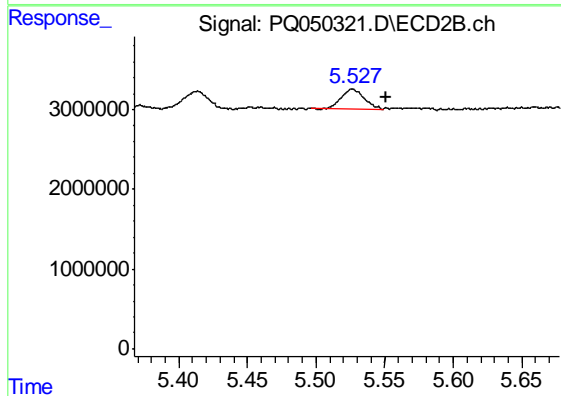
#3 AR-1016-1

R.T.: 5.527 min
 Delta R.T.: -0.004 min
 Response: 2920896
 Conc: 17.57 ng/ml



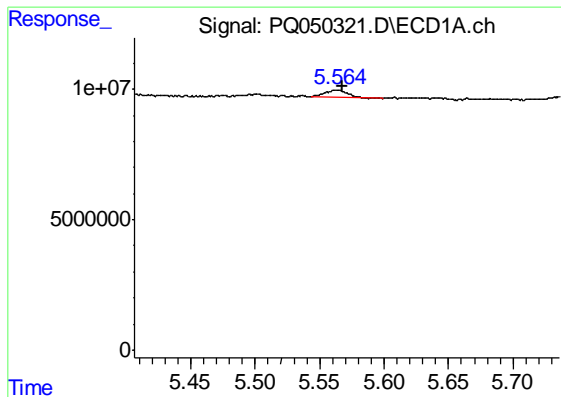
#4 AR-1016-2

R.T.: 6.532 min
 Delta R.T.: -0.038 min
 Response: 13446299
 Conc: 28.60 ng/ml



#4 AR-1016-2

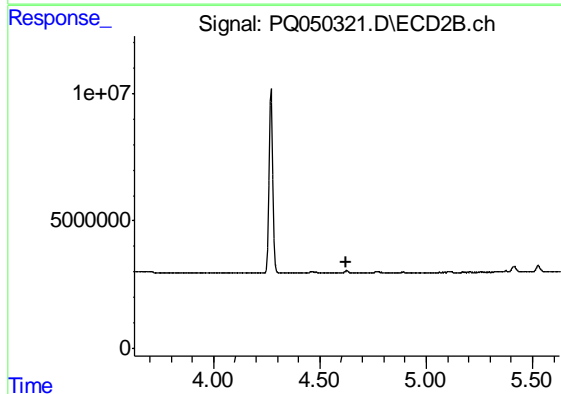
R.T.: 5.527 min
 Delta R.T.: -0.025 min
 Response: 2920896
 Conc: 13.07 ng/ml



#9 AR-1221-2

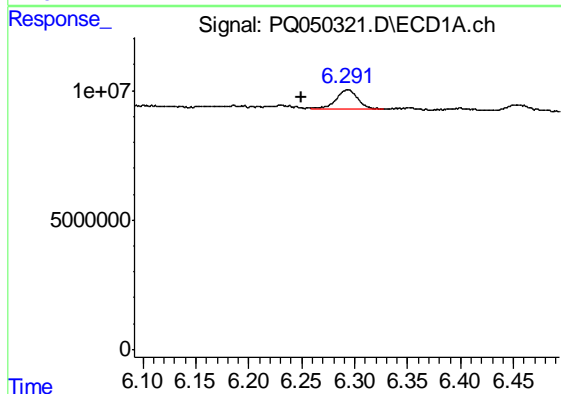
R.T.: 5.563 min
 Delta R.T.: -0.005 min
 Response: 3325525
 Conc: 39.50 ng/ml

Instrument :
 ECD_Q
 ClientSampleId :
 C0AT4



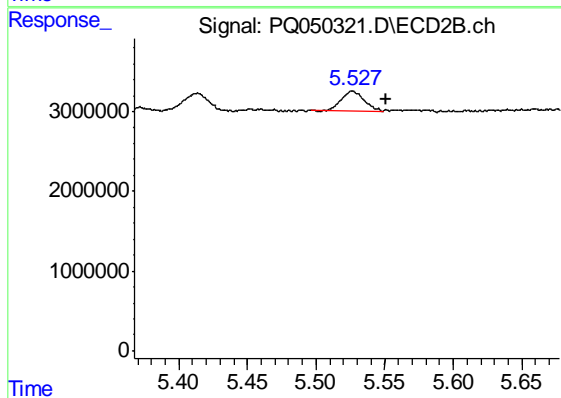
#9 AR-1221-2

R.T.: 0.000 min
 Exp R.T. : 4.627 min
 Response: 0
 Conc: N.D.



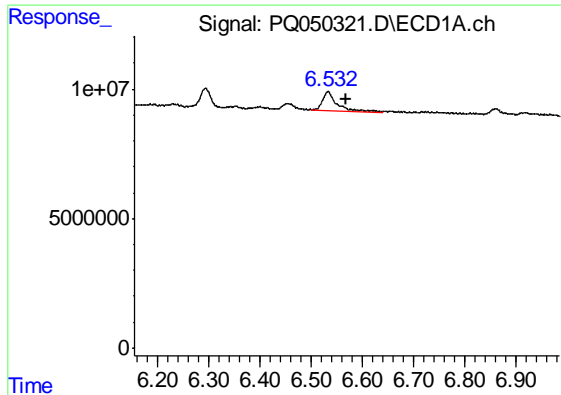
#12 AR-1232-2

R.T.: 6.293 min
 Delta R.T.: 0.043 min
 Response: 10362315
 Conc: 97.50 ng/ml



#12 AR-1232-2

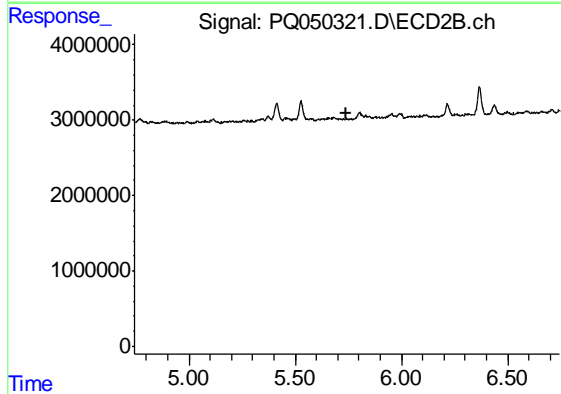
R.T.: 5.527 min
 Delta R.T.: -0.025 min
 Response: 2920896
 Conc: 30.79 ng/ml



#13 AR-1232-3

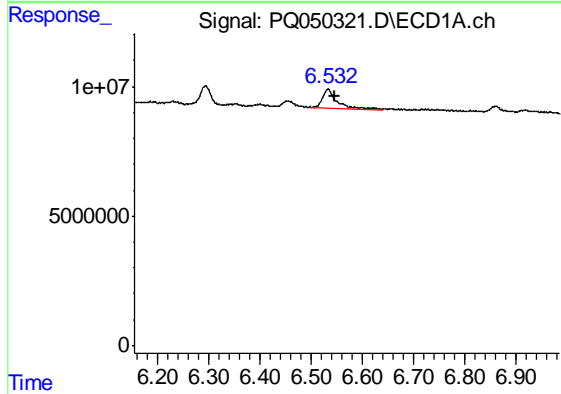
R.T.: 6.532 min
 Delta R.T.: -0.036 min
 Response: 13446299
 Conc: 62.16 ng/ml

Instrument :
 ECD_Q
 ClientSampleId :
 C0AT4



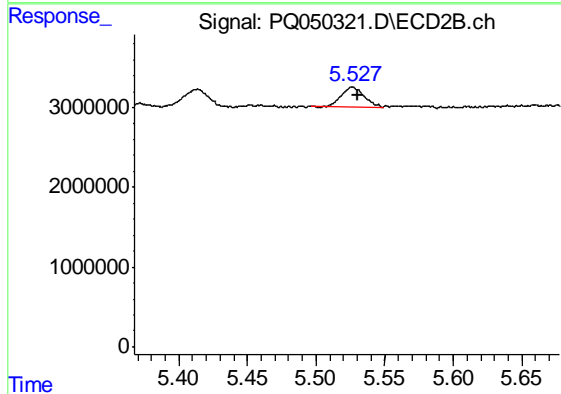
#13 AR-1232-3

R.T.: 0.000 min
 Exp R.T. : 5.743 min
 Response: 0
 Conc: N.D.



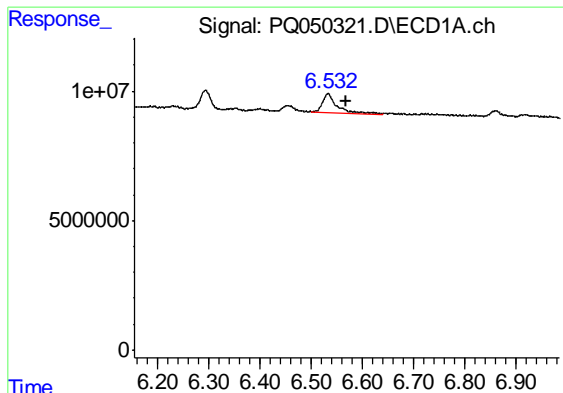
#16 AR-1242-1

R.T.: 6.532 min
 Delta R.T.: -0.013 min
 Response: 13446299
 Conc: 49.85 ng/ml



#16 AR-1242-1

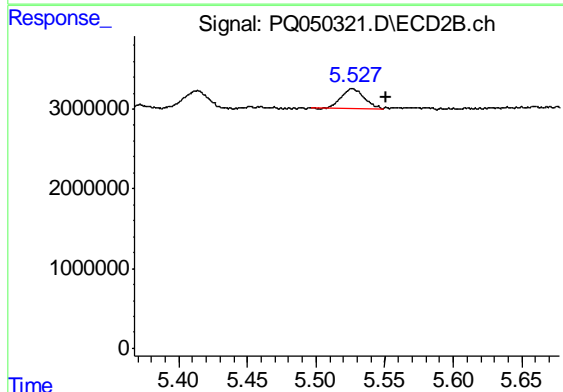
R.T.: 5.527 min
 Delta R.T.: -0.004 min
 Response: 2920896
 Conc: 22.98 ng/ml



#17 AR-1242-2

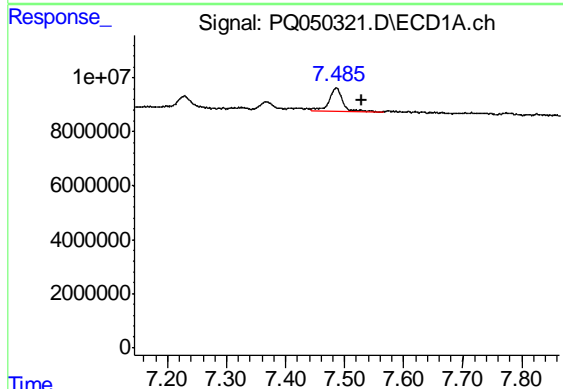
R.T.: 6.532 min
 Delta R.T.: -0.036 min
 Response: 13446299
 Conc: 35.61 ng/ml

Instrument :
 ECD_Q
 ClientSampled :
 C0AT4



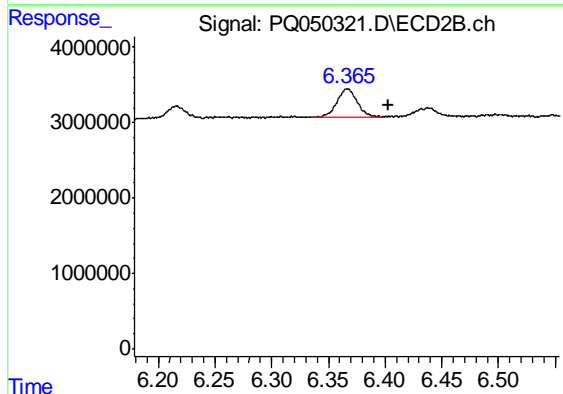
#17 AR-1242-2

R.T.: 5.527 min
 Delta R.T.: -0.024 min
 Response: 2920896
 Conc: 16.82 ng/ml



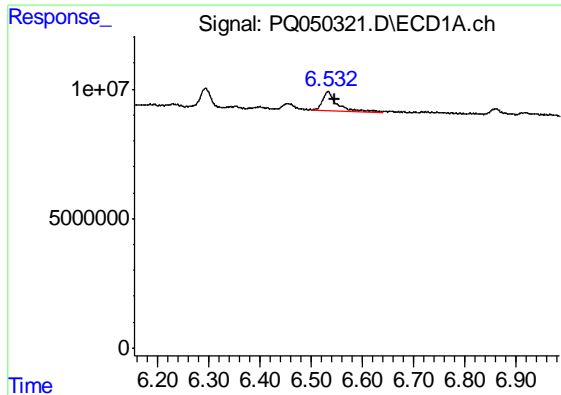
#20 AR-1242-5

R.T.: 7.486 min
 Delta R.T.: -0.043 min
 Response: 13743577
 Conc: 71.35 ng/ml



#20 AR-1242-5

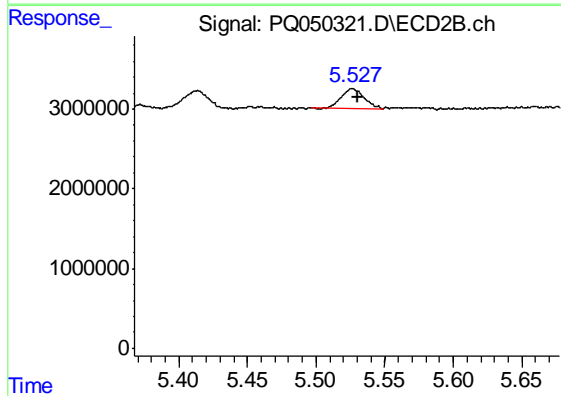
R.T.: 6.367 min
 Delta R.T.: -0.037 min
 Response: 4558441
 Conc: 34.20 ng/ml



#21 AR-1248-1

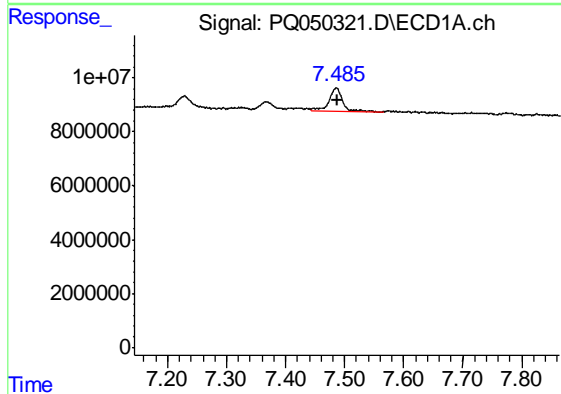
R.T.: 6.532 min
 Delta R.T.: -0.013 min
 Response: 13446299
 Conc: 61.84 ng/ml

Instrument :
 ECD_Q
 ClientSampled :
 C0AT4



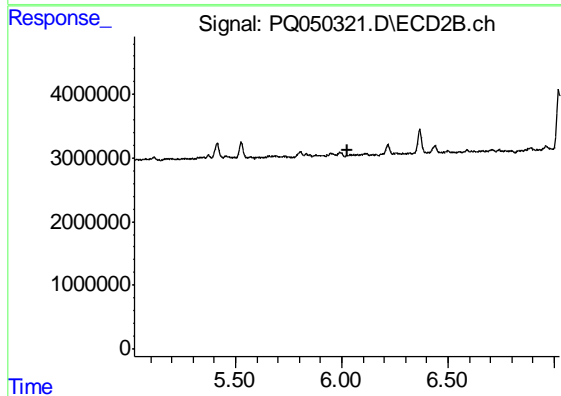
#21 AR-1248-1

R.T.: 5.527 min
 Delta R.T.: -0.004 min
 Response: 2920896
 Conc: 28.53 ng/ml



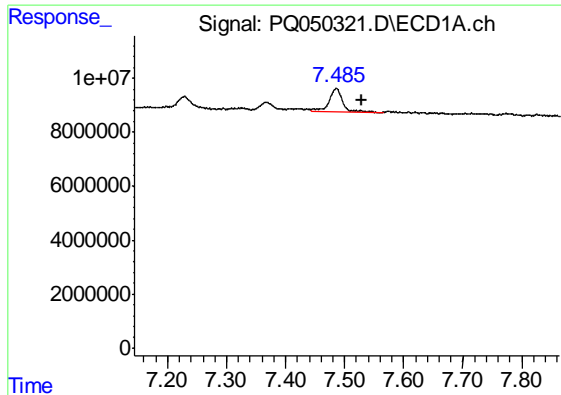
#24 AR-1248-4

R.T.: 7.486 min
 Delta R.T.: -0.003 min
 Response: 13743577
 Conc: 41.09 ng/ml



#24 AR-1248-4

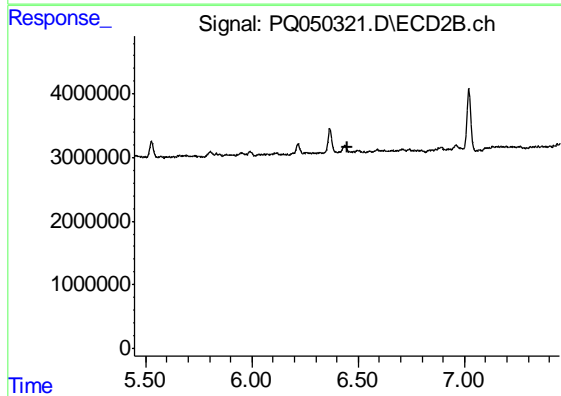
R.T.: 0.000 min
 Exp R.T. : 6.025 min
 Response: 0
 Conc: N.D.



#25 AR-1248-5

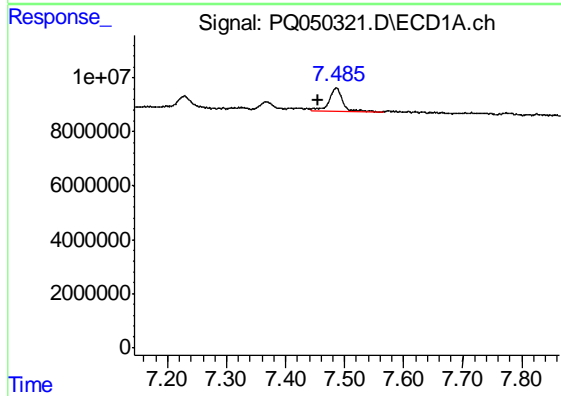
R.T.: 7.486 min
 Delta R.T.: -0.042 min
 Response: 13743577
 Conc: 43.66 ng/ml

Instrument :
 ECD_Q
 ClientSampleId :
 C0AT4



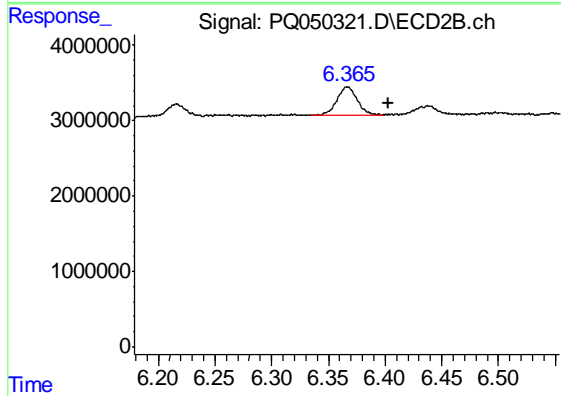
#25 AR-1248-5

R.T.: 0.000 min
 Exp R.T. : 6.447 min
 Response: 0
 Conc: N.D.



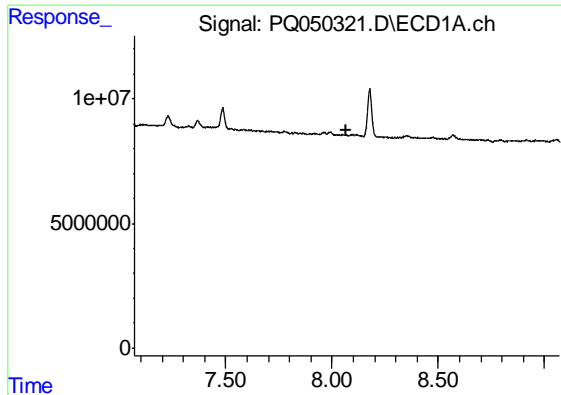
#26 AR-1254-1

R.T.: 7.486 min
 Delta R.T.: 0.030 min
 Response: 13743577
 Conc: 41.67 ng/ml



#26 AR-1254-1

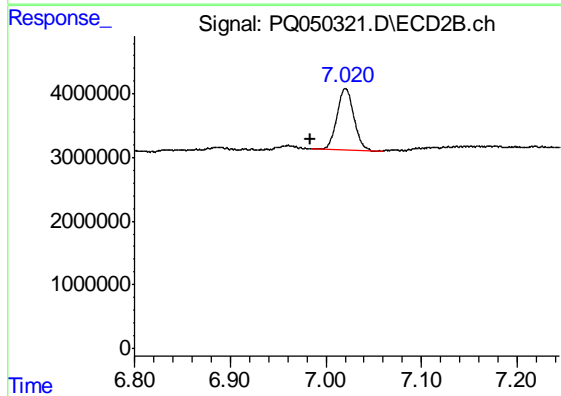
R.T.: 6.367 min
 Delta R.T.: -0.037 min
 Response: 4558441
 Conc: 16.45 ng/ml



#28 AR-1254-3

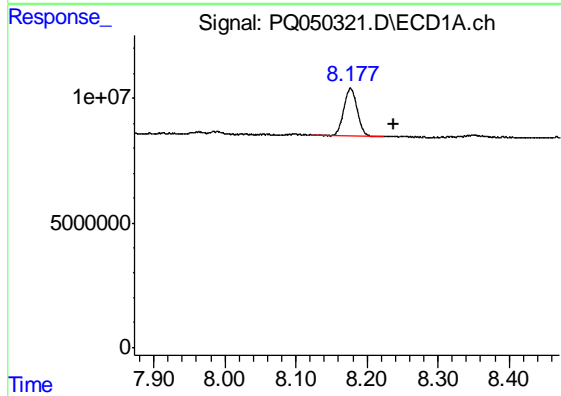
R.T.: 0.000 min
 Exp R.T. : 8.070 min
 Response: 0
 Conc: N.D.

Instrument :
 ECD_Q
 ClientSampleId :
 C0AT4



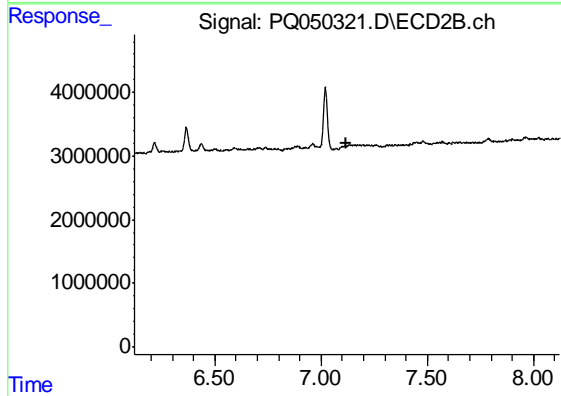
#28 AR-1254-3

R.T.: 7.021 min
 Delta R.T.: 0.037 min
 Response: 12088370
 Conc: 29.47 ng/ml



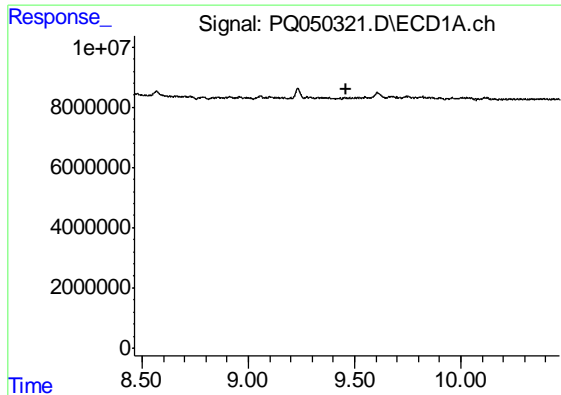
#31 AR-1260-1

R.T.: 8.177 min
 Delta R.T.: -0.061 min
 Response: 25197057
 Conc: 77.37 ng/ml



#31 AR-1260-1

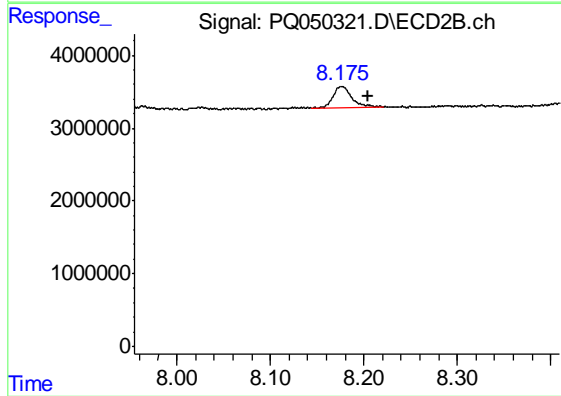
R.T.: 0.000 min
 Exp R.T. : 7.122 min
 Response: 0
 Conc: N.D.



#35 AR-1260-5

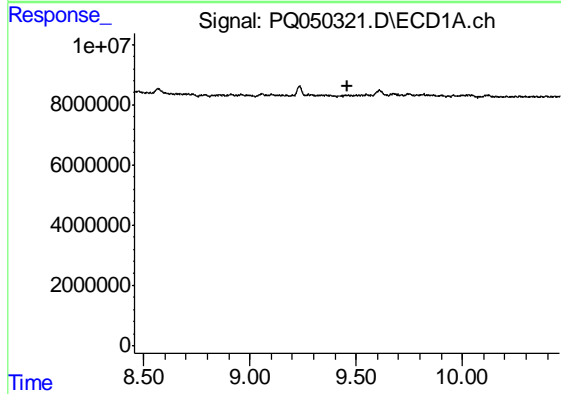
R.T.: 0.000 min
 Exp R.T. : 9.464 min
 Response: 0
 Conc: N.D.

Instrument :
 ECD_Q
 ClientSampled :
 C0AT4



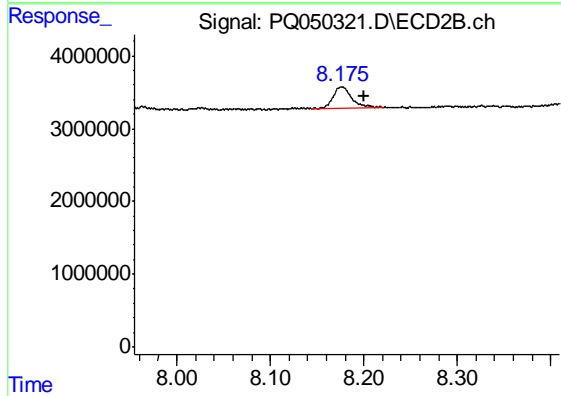
#35 AR-1260-5

R.T.: 8.177 min
 Delta R.T.: -0.028 min
 Response: 3981533
 Conc: 5.17 ng/ml



#37 AR-1262-2

R.T.: 0.000 min
 Exp R.T. : 9.457 min
 Response: 0
 Conc: N.D.



#37 AR-1262-2

R.T.: 8.177 min
 Delta R.T.: -0.024 min
 Response: 3981533
 Conc: 4.49 ng/ml