

Data Path : Z:\pestpcbsrv\HPCHEM1\ECD_Q\Data\PQ100923\
 Data File : PQ063588.D
 Signal(s) : Signal #1: ECD1A.ch Signal #2: ECD2B.ch
 Acq On : 10 Oct 2023 00:01
 Operator : YP\AJ
 Sample : 04699-08
 Misc : AR1232 LOQ 50 PPB
 ALS Vial : 41 Sample Multiplier: 1

Instrument :
 ECD_Q
ClientSampleId :
 LOQ-WATER-02-QT4-2023

Integration File signal 1: autoint1.e
 Integration File signal 2: autoint2.e
 Quant Time: Oct 10 06:36:33 2023
 Quant Method : Z:\pestpcbsrv\HPCHEM1\ECD_Q\Method\PQ091923.M
 Quant Title : GC EXTRACTABLES
 QLast Update : Wed Sep 20 05:26:41 2023
 Response via : Initial Calibration
 Integrator: ChemStation

Volume Inj. : 2 µl
 Signal #1 Phase : ZB-MR1 Signal #2 Phase: ZB-MR2
 Signal #1 Info : 30Mx0.32mmx 0.50µ Signal #2 Info : 30M x 0.32mm x 0.25µm

Compound	RT#1	RT#2	Resp#1	Resp#2	ng/ml	ng/ml

System Monitoring Compounds						
1) SA Tetrachlo...	3.461	2.780	107.3E6	80615031	22.903	23.326
2) SA Decachlor...	8.696	7.581	81201420	93509986	23.237	26.013
Target Compounds						
11) L3 AR-1232-1	3.815	3.130	6430367	4692704	61.750	53.971
12) L3 AR-1232-2	4.316	3.807	2899686	3850727	45.587	47.617
13) L3 AR-1232-3	4.596	3.967	5073695	2147605	48.416	50.628
14) L3 AR-1232-4	4.747	4.053	2416751	2222189	48.632	60.603
15) L3 AR-1232-5	4.846	4.213	1910840	2408185	50.309	55.825

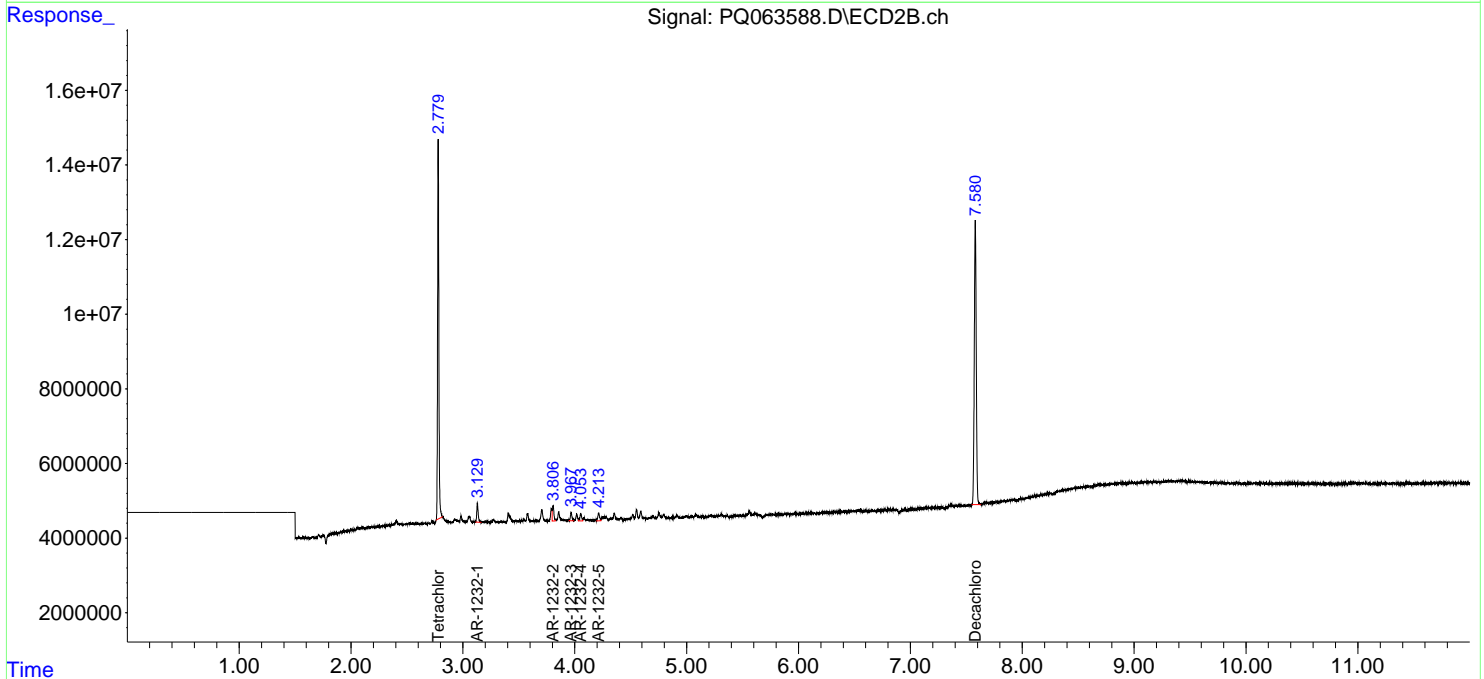
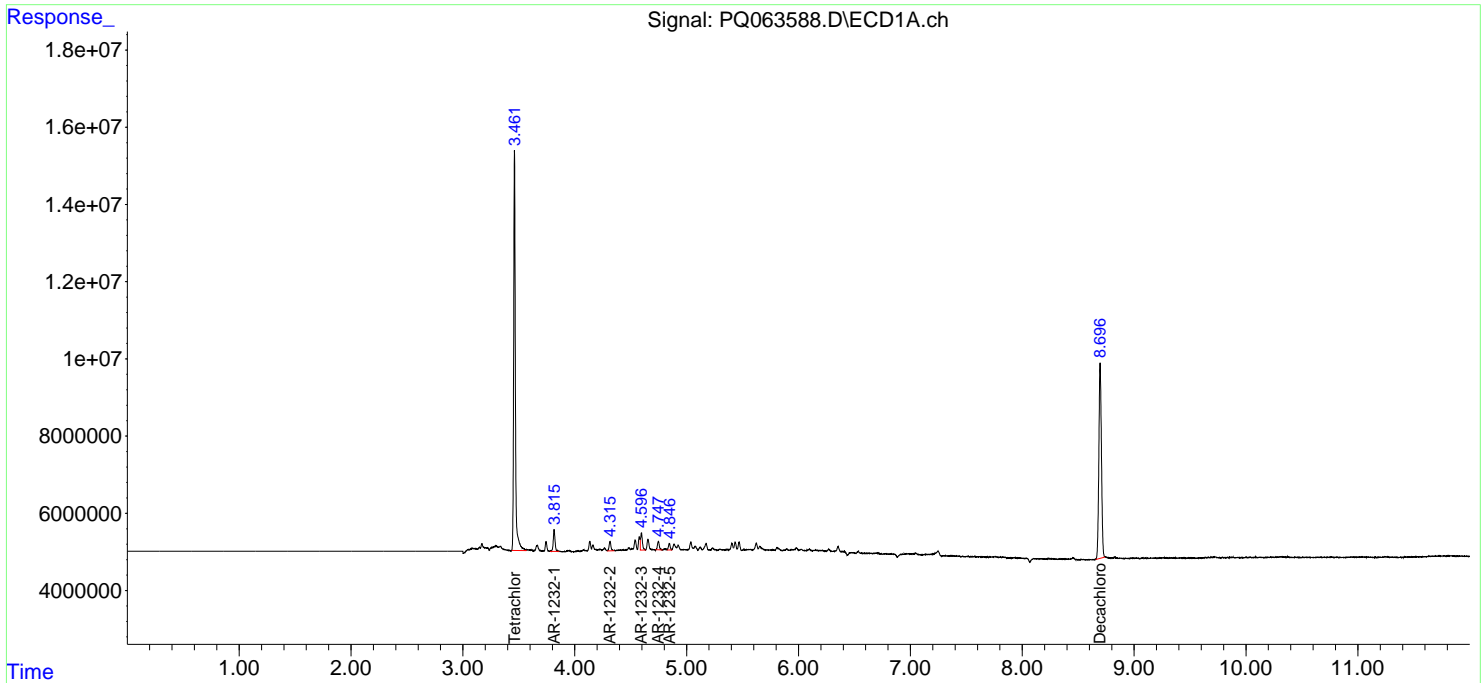
(f)=RT Delta > 1/2 Window (#)=Amounts differ by > 25% (m)=manual int.

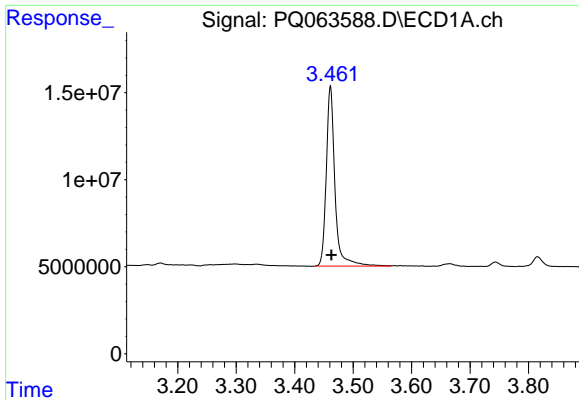
Data Path : Z:\pestpcbsrv\HPCHEM1\ECD_Q\Data\PQ100923\
 Data File : PQ063588.D
 Signal(s) : Signal #1: ECD1A.ch Signal #2: ECD2B.ch
 Acq On : 10 Oct 2023 00:01
 Operator : YP\AJ
 Sample : 04699-08
 Misc : AR1232 LOQ 50 PPB
 ALS Vial : 41 Sample Multiplier: 1

Instrument :
 ECD_Q
 ClientSampleId :
 LOQ-WATER-02-QT4-2023

Integration File signal 1: autoint1.e
 Integration File signal 2: autoint2.e
 Quant Time: Oct 10 06:36:33 2023
 Quant Method : Z:\pestpcbsrv\HPCHEM1\ECD_Q\Method\PQ091923.M
 Quant Title : GC EXTRACTABLES
 QLast Update : Wed Sep 20 05:26:41 2023
 Response via : Initial Calibration
 Integrator: ChemStation

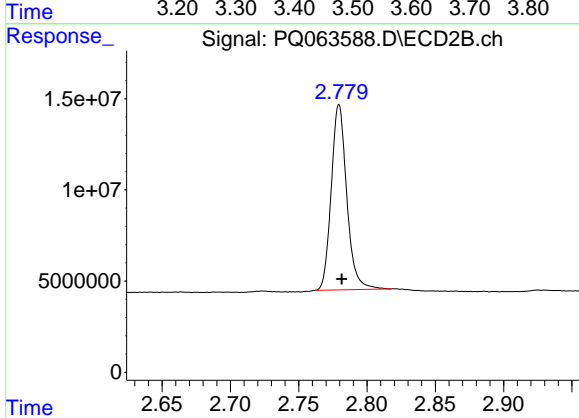
Volume Inj. : 2 µl
 Signal #1 Phase : ZB-MR1 Signal #2 Phase: ZB-MR2
 Signal #1 Info : 30Mx0.32mmx 0.50µ Signal #2 Info : 30M x 0.32mm x 0.25µm



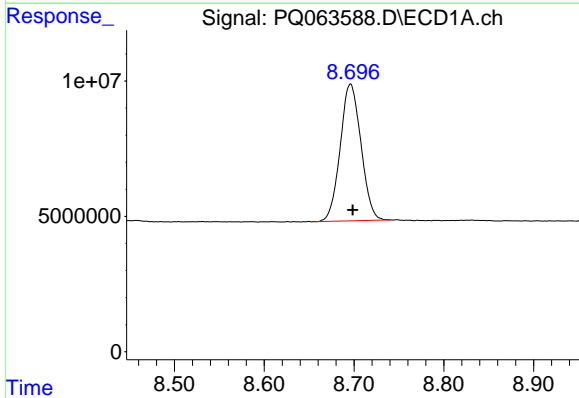


#1 Tetrachloro-m-xylene
 R.T.: 3.461 min
 Delta R.T.: -0.002 min
 Response: 107267582
 Conc: 22.90 ng/ml

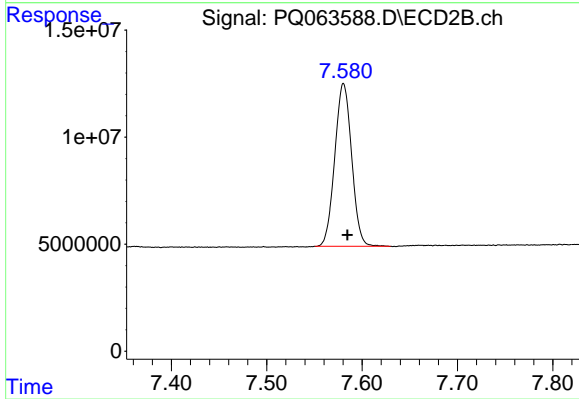
Instrument :
 ECD_Q
 ClientSampleId :
 LOQ-WATER-02-QT4-2023



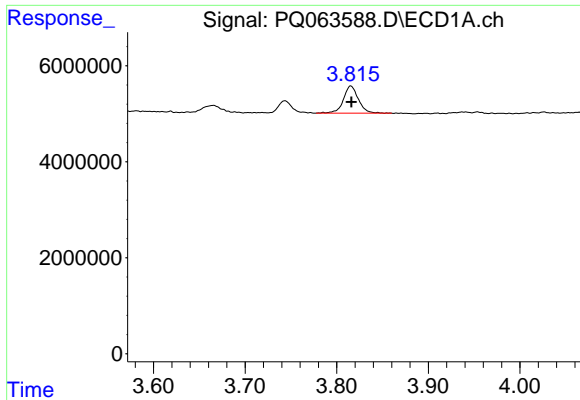
#1 Tetrachloro-m-xylene
 R.T.: 2.780 min
 Delta R.T.: -0.002 min
 Response: 80615031
 Conc: 23.33 ng/ml



#2 Decachlorobiphenyl
 R.T.: 8.696 min
 Delta R.T.: -0.002 min
 Response: 81201420
 Conc: 23.24 ng/ml



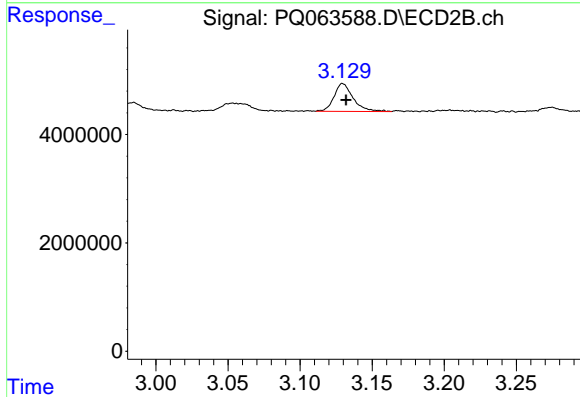
#2 Decachlorobiphenyl
 R.T.: 7.581 min
 Delta R.T.: -0.004 min
 Response: 93509986
 Conc: 26.01 ng/ml



#11 AR-1232-1

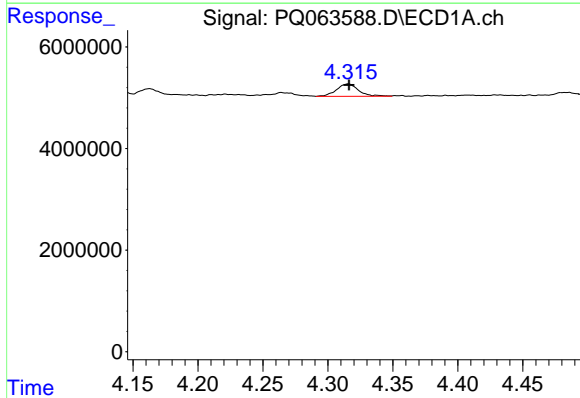
R.T.: 3.815 min
 Delta R.T.: 0.000 min
 Response: 6430367
 Conc: 61.75 ng/ml

Instrument : ECD_Q
 ClientSampleId : LOQ-WATER-02-QT4-2023



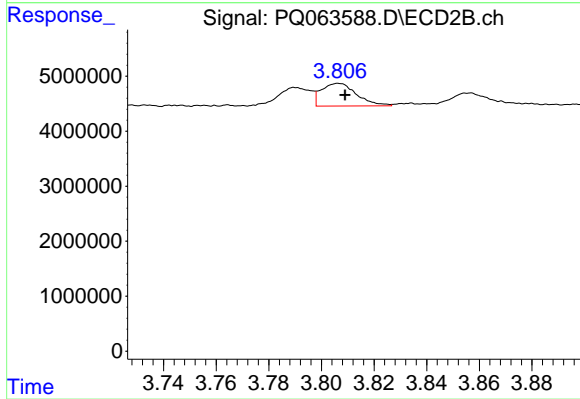
#11 AR-1232-1

R.T.: 3.130 min
 Delta R.T.: -0.002 min
 Response: 4692704
 Conc: 53.97 ng/ml



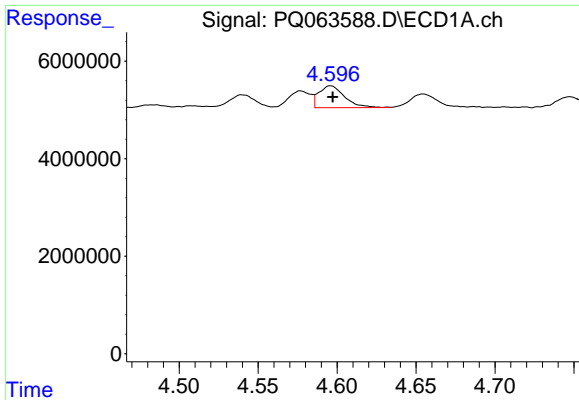
#12 AR-1232-2

R.T.: 4.316 min
 Delta R.T.: 0.000 min
 Response: 2899686
 Conc: 45.59 ng/ml



#12 AR-1232-2

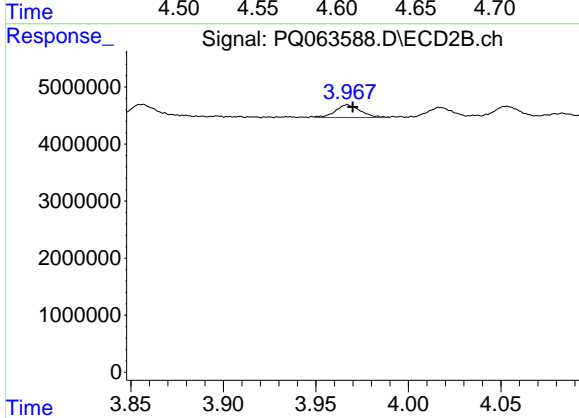
R.T.: 3.807 min
 Delta R.T.: -0.002 min
 Response: 3850727
 Conc: 47.62 ng/ml



#13 AR-1232-3

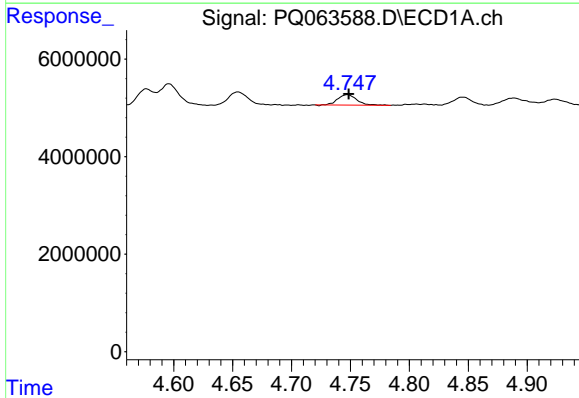
R.T.: 4.596 min
 Delta R.T.: -0.001 min
 Response: 5073695
 Conc: 48.42 ng/ml

Instrument :
 ECD_Q
 ClientSampleId :
 LOQ-WATER-02-QT4-2023



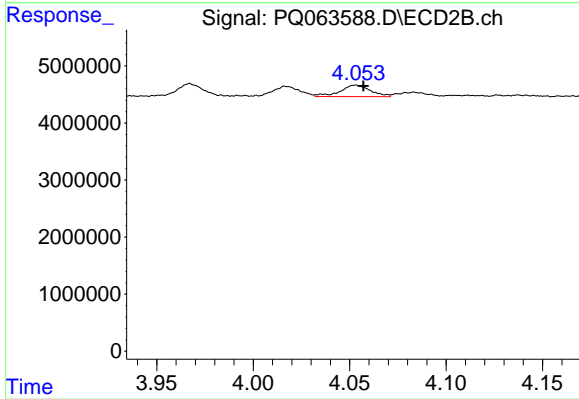
#13 AR-1232-3

R.T.: 3.967 min
 Delta R.T.: -0.003 min
 Response: 2147605
 Conc: 50.63 ng/ml



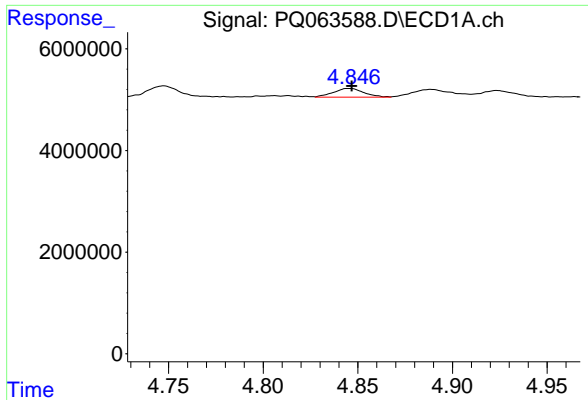
#14 AR-1232-4

R.T.: 4.747 min
 Delta R.T.: -0.001 min
 Response: 2416751
 Conc: 48.63 ng/ml



#14 AR-1232-4

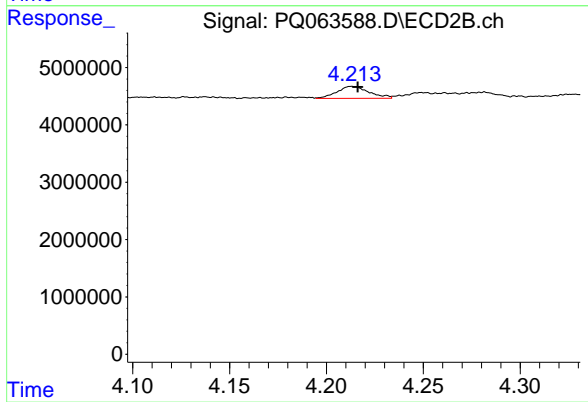
R.T.: 4.053 min
 Delta R.T.: -0.004 min
 Response: 2222189
 Conc: 60.60 ng/ml



#15 AR-1232-5

R.T.: 4.846 min
Delta R.T.: -0.001 min
Response: 1910840
Conc: 50.31 ng/ml

Instrument :
ECD_Q
ClientSampleId :
LOQ-WATER-02-QT4-2023



#15 AR-1232-5

R.T.: 4.213 min
Delta R.T.: -0.003 min
Response: 2408185
Conc: 55.83 ng/ml