

Data Path : Z:\pestpcbsrv\HPCHEM1\ECD_Q\Data\PQ100923\
 Data File : PQ063614.D
 Signal(s) : Signal #1: ECD1A.ch Signal #2: ECD2B.ch
 Acq On : 10 Oct 2023 06:23
 Operator : YP\AJ
 Sample : 04699-09
 Misc : AR1268 MDL 25 PB
 ALS Vial : 63 Sample Multiplier: 1

Instrument :
 ECD_Q
ClientSampleId :
 MDL-WATER-03-QT4-2023

Manual Integrations
APPROVED

Reviewed By :Yogesh Patel 10/10/2023
 Supervised By :Ankita Jodhani 10/11/2023

Integration File signal 1: autoint1.e
 Integration File signal 2: autoint2.e
 Quant Time: Oct 10 10:49:08 2023
 Quant Method : Z:\pestpcbsrv\HPCHEM1\ECD_Q\Method\PQ091923.M
 Quant Title : GC EXTRACTABLES
 QLast Update : Wed Sep 20 05:26:41 2023
 Response via : Initial Calibration
 Integrator: ChemStation

Volume Inj. : 2 µl
 Signal #1 Phase : ZB-MR1 Signal #2 Phase: ZB-MR2
 Signal #1 Info : 30Mx0.32mmx 0.50µ Signal #2 Info : 30M x 0.32mm x 0.25µm

Compound	RT#1	RT#2	Resp#1	Resp#2	ng/ml	ng/ml

System Monitoring Compounds						
1) SA Tetrachlo...	3.461	2.779	98576486	77589035	21.047	22.451
2) SA Decachlor...	8.697	7.580	80838881	95270458	23.133	26.503
Target Compounds						
41) L9 AR-1268-1	7.570	6.535	12642898	14597443	20.468	26.034m#
42) L9 AR-1268-2	7.649	6.599	11772093	12573122	20.561	25.278
43) L9 AR-1268-3	7.831	6.800	10025899	12164868	20.559	28.535 #
44) L9 AR-1268-4	8.155	7.092	3882601	4816813	20.182	26.013 #
45) L9 AR-1268-5	8.455	7.361	29025033	34554914	20.323	26.280 #

(f)=RT Delta > 1/2 Window (#)=Amounts differ by > 25% (m)=manual int.

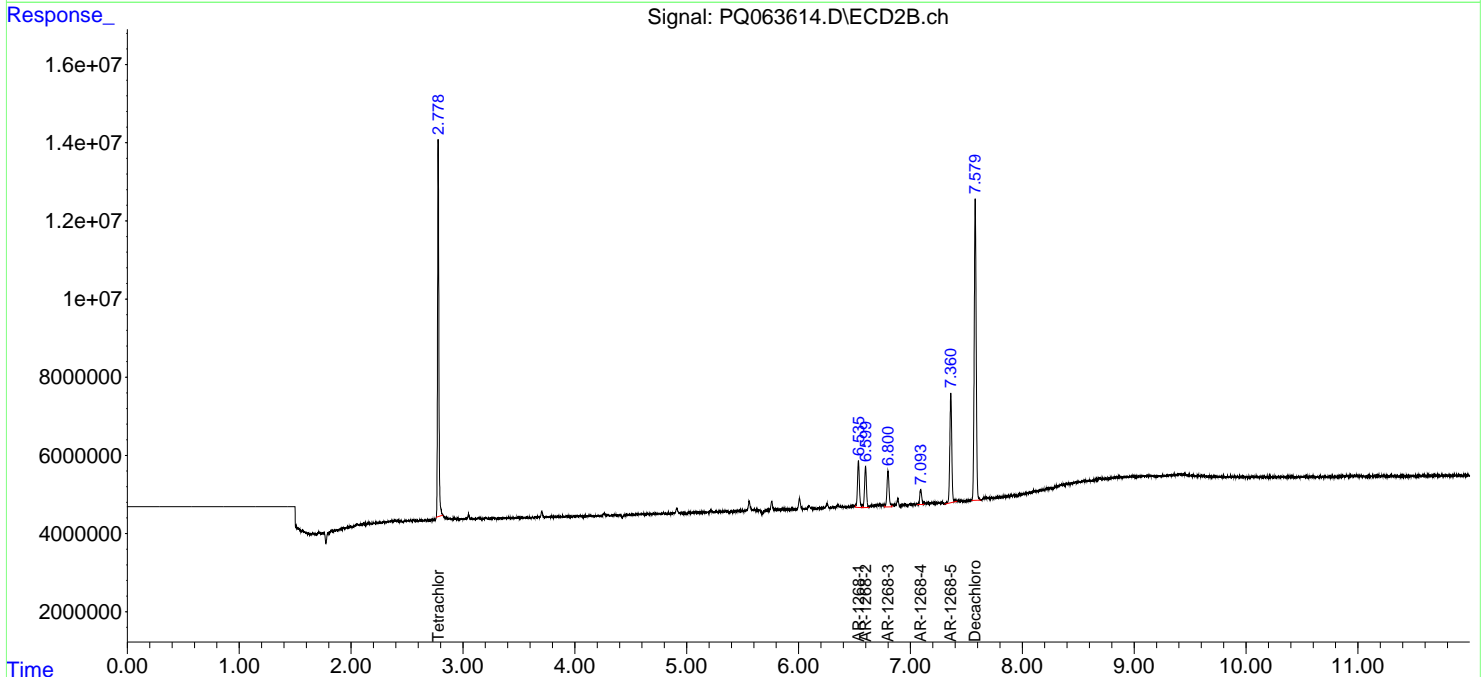
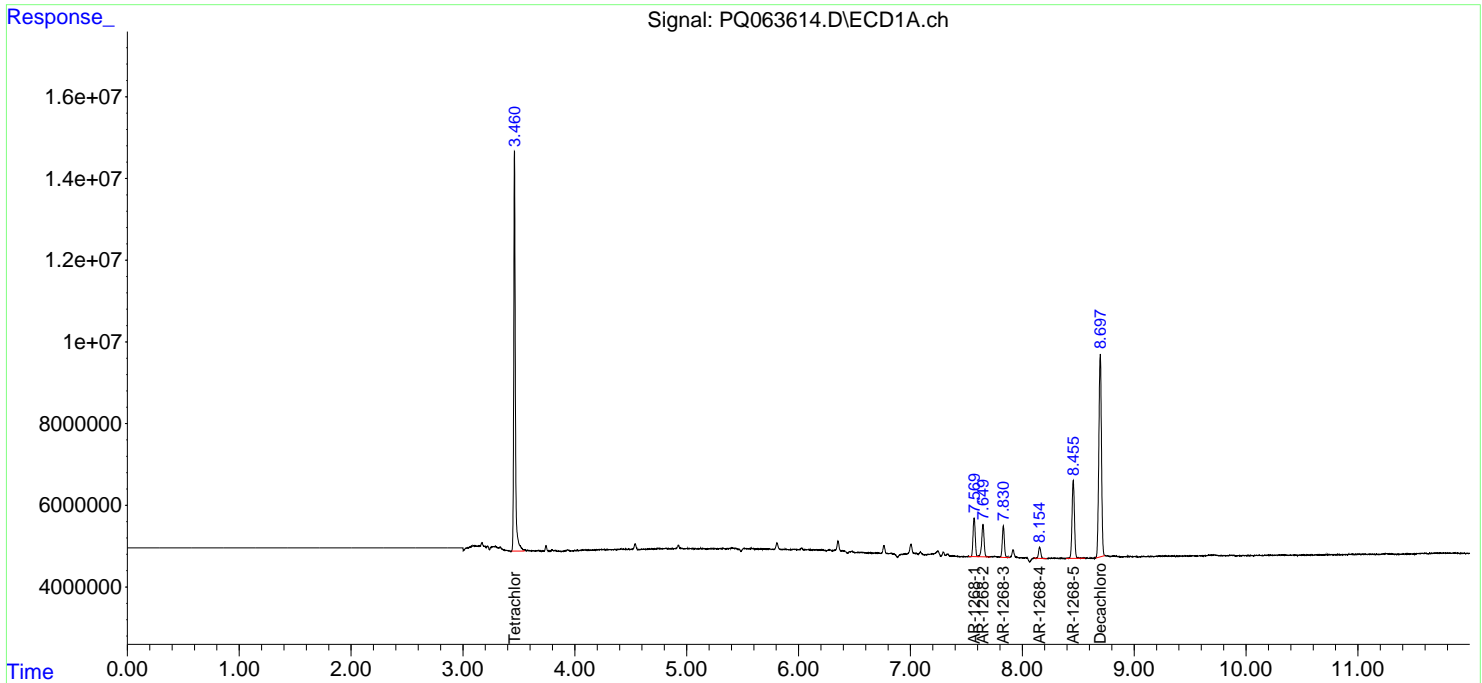
Data Path : Z:\pestpcbsrv\HPCHEM1\ECD_Q\Data\PQ100923\
 Data File : PQ063614.D
 Signal(s) : Signal #1: ECD1A.ch Signal #2: ECD2B.ch
 Acq On : 10 Oct 2023 06:23
 Operator : YP\AJ
 Sample : 04699-09
 Misc : AR1268 MDL 25 PB
 ALS Vial : 63 Sample Multiplier: 1

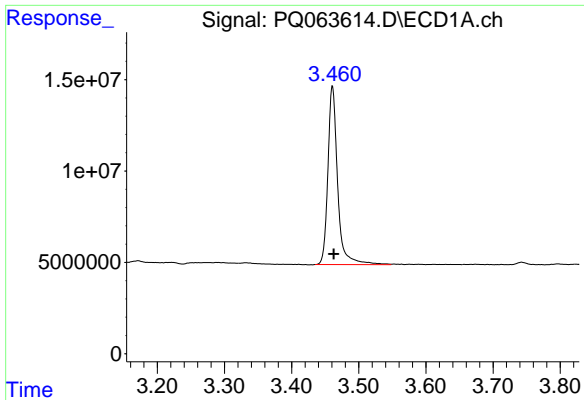
Instrument :
 ECD_Q
ClientSampleId :
 MDL-WATER-03-QT4-2023

Manual Integrations
APPROVED
 Reviewed By :Yogesh Patel 10/10/2023
 Supervised By :Ankita Jodhani 10/11/2023

Integration File signal 1: autoint1.e
 Integration File signal 2: autoint2.e
 Quant Time: Oct 10 10:49:08 2023
 Quant Method : Z:\pestpcbsrv\HPCHEM1\ECD_Q\Method\PQ091923.M
 Quant Title : GC EXTRACTABLES
 QLast Update : Wed Sep 20 05:26:41 2023
 Response via : Initial Calibration
 Integrator: ChemStation

Volume Inj. : 2 µl
 Signal #1 Phase : ZB-MR1 Signal #2 Phase: ZB-MR2
 Signal #1 Info : 30Mx0.32mmx 0.50µ Signal #2 Info : 30M x 0.32mm x 0.25µm





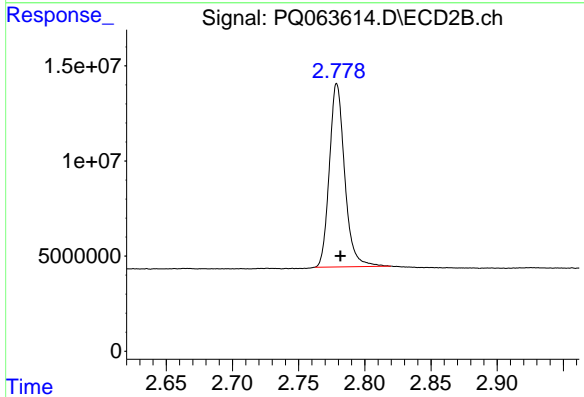
#1 Tetrachloro-m-xylene

R.T.: 3.461 min
 Delta R.T.: -0.002 min
 Response: 98576486
 Conc: 21.05 ng/ml

Instrument : ECD_Q
 ClientSampleId : MDL-WATER-03-QT4-2023

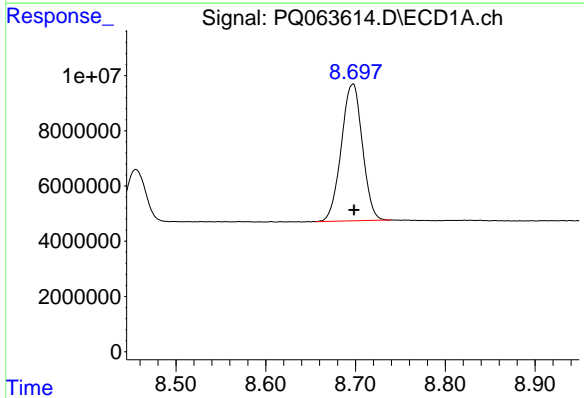
Manual Integrations
 APPROVED

Reviewed By :Yogesh Patel 10/10/2023
 Supervised By :Ankita Jodhani 10/11/2023



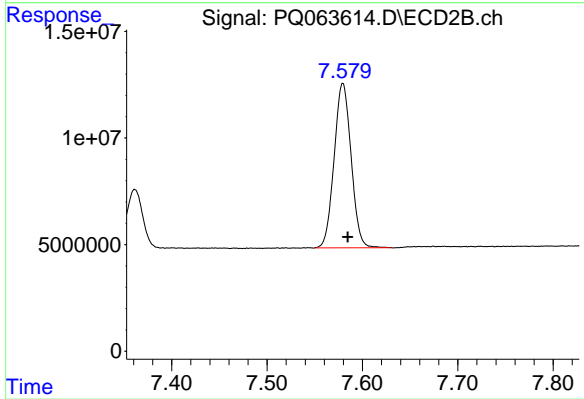
#1 Tetrachloro-m-xylene

R.T.: 2.779 min
 Delta R.T.: -0.003 min
 Response: 77589035
 Conc: 22.45 ng/ml



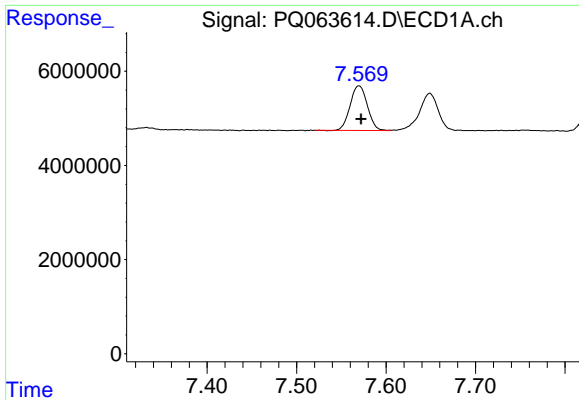
#2 Decachlorobiphenyl

R.T.: 8.697 min
 Delta R.T.: -0.002 min
 Response: 80838881
 Conc: 23.13 ng/ml



#2 Decachlorobiphenyl

R.T.: 7.580 min
 Delta R.T.: -0.005 min
 Response: 95270458
 Conc: 26.50 ng/ml



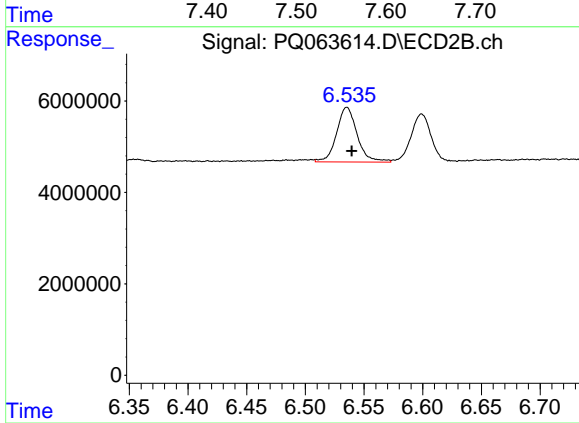
#41 AR-1268-1

R.T.: 7.570 min
 Delta R.T.: -0.002 min
 Response: 12642898
 Conc: 20.47 ng/ml

Instrument :
 ECD_Q
 ClientSampleId :
 MDL-WATER-03-QT4-2023

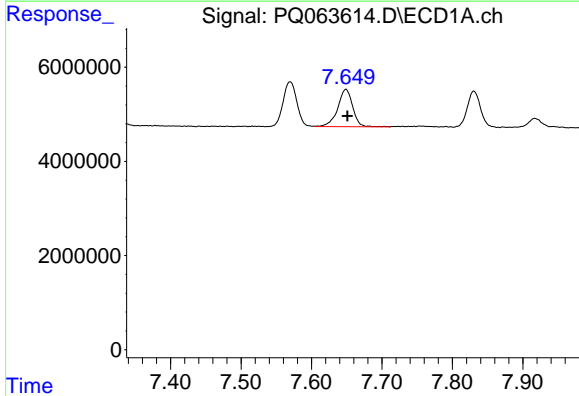
Manual Integrations
 APPROVED

Reviewed By :Yogesh Patel 10/10/2023
 Supervised By :Ankita Jodhani 10/11/2023



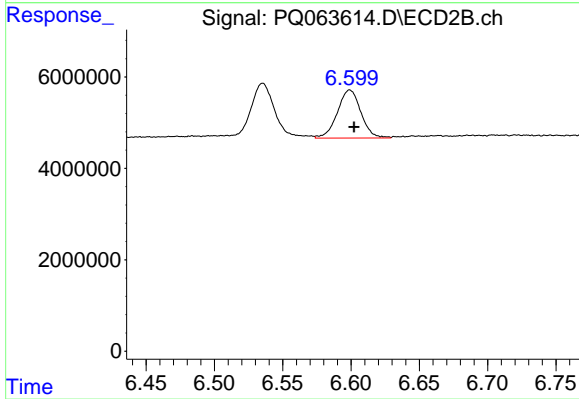
#41 AR-1268-1

R.T.: 6.535 min
 Delta R.T.: -0.004 min
 Response: 14597443
 Conc: 26.03 ng/ml m



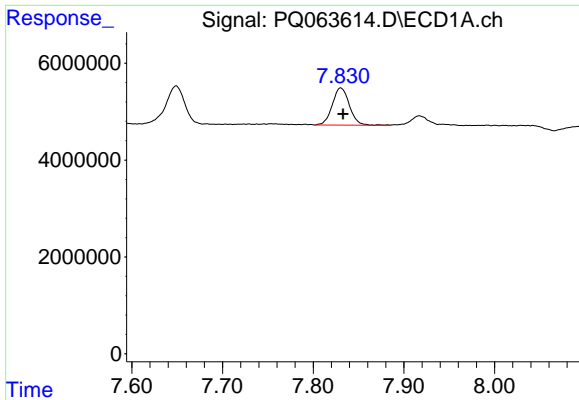
#42 AR-1268-2

R.T.: 7.649 min
 Delta R.T.: -0.002 min
 Response: 11772093
 Conc: 20.56 ng/ml



#42 AR-1268-2

R.T.: 6.599 min
 Delta R.T.: -0.003 min
 Response: 12573122
 Conc: 25.28 ng/ml



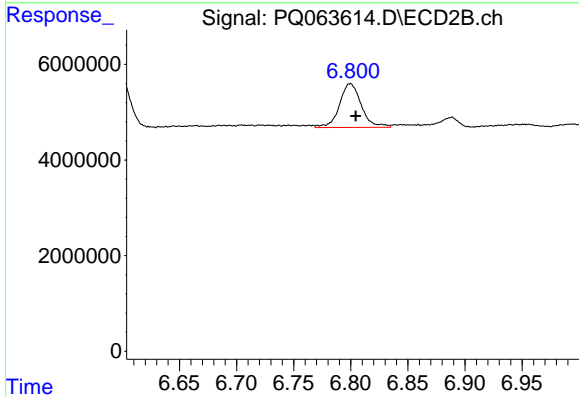
#43 AR-1268-3

R.T.: 7.831 min
 Delta R.T.: -0.002 min
 Response: 10025899
 Conc: 20.56 ng/ml

Instrument :
 ECD_Q
 ClientSampleId :
 MDL-WATER-03-QT4-2023

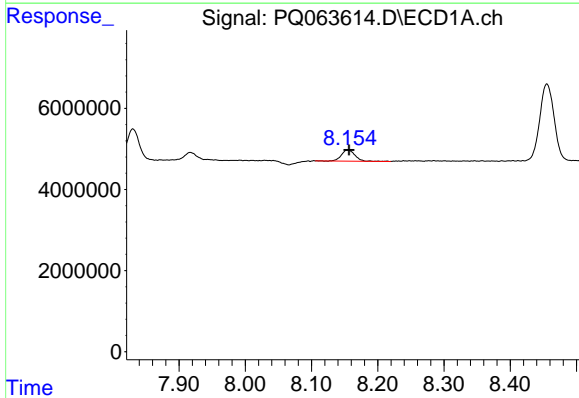
Manual Integrations
 APPROVED

Reviewed By :Yogesh Patel 10/10/2023
 Supervised By :Ankita Jodhani 10/11/2023



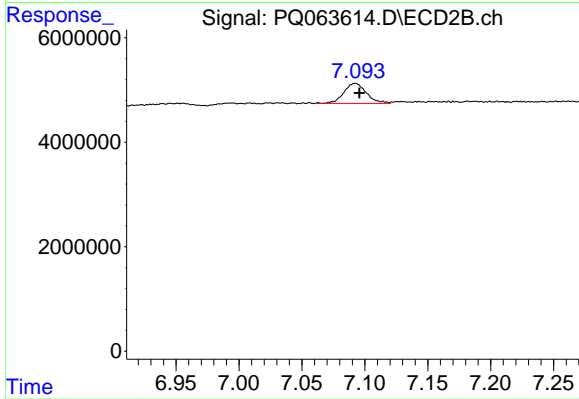
#43 AR-1268-3

R.T.: 6.800 min
 Delta R.T.: -0.004 min
 Response: 12164868
 Conc: 28.54 ng/ml



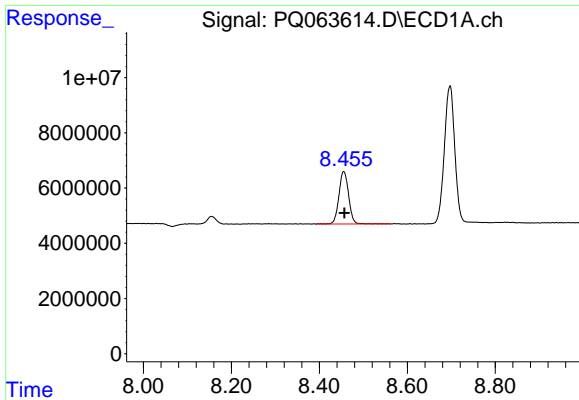
#44 AR-1268-4

R.T.: 8.155 min
 Delta R.T.: -0.002 min
 Response: 3882601
 Conc: 20.18 ng/ml



#44 AR-1268-4

R.T.: 7.092 min
 Delta R.T.: -0.003 min
 Response: 4816813
 Conc: 26.01 ng/ml



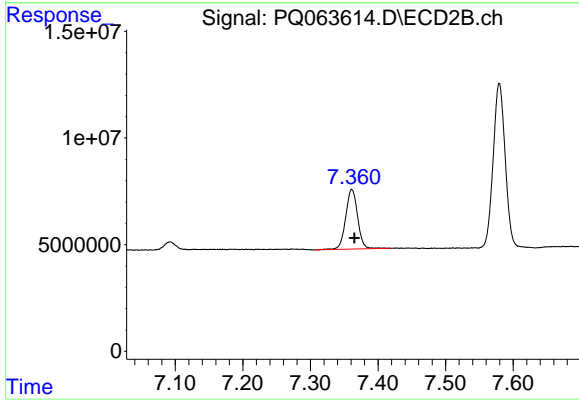
#45 AR-1268-5

R.T.: 8.455 min
 Delta R.T.: -0.002 min
 Response: 29025033
 Conc: 20.32 ng/ml

Instrument : ECD_Q
 ClientSampleId : MDL-WATER-03-QT4-2023

Manual Integrations
 APPROVED

Reviewed By :Yogesh Patel 10/10/2023
 Supervised By :Ankita Jodhani 10/11/2023



#45 AR-1268-5

R.T.: 7.361 min
 Delta R.T.: -0.004 min
 Response: 34554914
 Conc: 26.28 ng/ml