

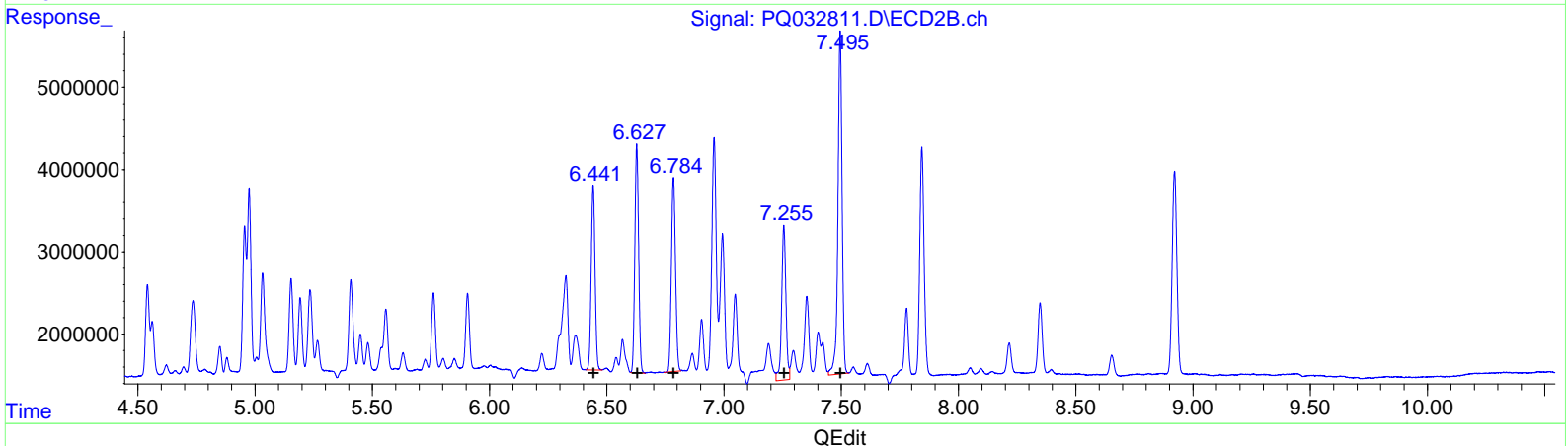
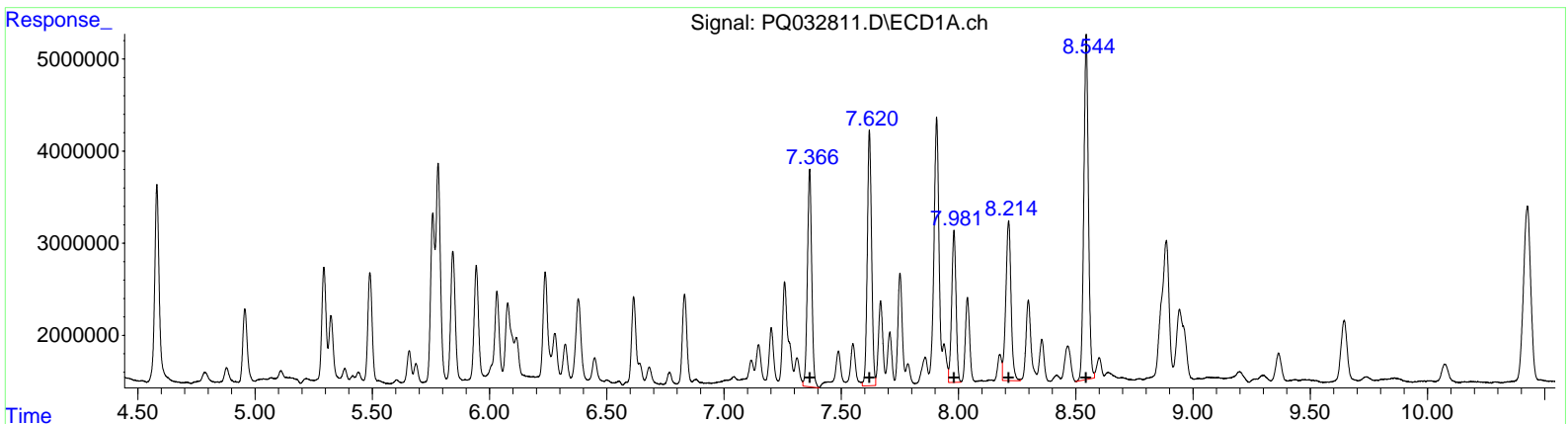
Data Path : Z:\pestpcbsrv\HPCHEM1\ECD_Q\Data\PQ101018\
 Data File : PQ032811.D
 Signal(s) : Signal #1: ECD1A.ch Signal #2: ECD2B.ch
 Acq On : 10 Oct 2018 12:27
 Operator : SM\SJ
 Sample : J5258-03MSD (Sig #1); J5250-03MSD (Sig #2)
 Misc :
 ALS Vial : 17 Sample Multiplier: 1

Instrument :
 ECD_Q
ClientSampled :
 ESNN1MSD

Manual Integrations
APPROVED
 Sohil
 10/11/2018 2:35:50 PM

Integration File signal 1: autoint1.e
 Integration File signal 2: autoint2.e
 Quant Time: Oct 12 06:53:07 2018
 Quant Method : Z:\pestpcbsrv\HPCHEM1\ECD_Q\Method\PQ100918CLP.M
 Quant Title : GC EXTRACTABLES
 QLast Update : Wed Oct 10 08:14:42 2018
 Response via : Initial Calibration
 Integrator: ChemStation

Volume Inj. : 1 µl
 Signal #1 Phase : ZB MR1 Signal #2 Phase: ZB MR2
 Signal #1 Info : 30Mx0.32mmx 0.5µm Signal #2 Info : 30M x 0.32mm x 0.25µm



(31) AR-1260-1 (L7)

R.T.	Response	Conc
7.37	30352498	283.78
7.62	35168452	278.51
7.98	21345414	274.04
8.21	26840149	265.15
8.54	51056076	270.38

(31) AR-1260-1 #2 (L7)

R.T.	Response	Conc
6.44	25789685	274.58
6.63	31404693	269.54
6.78	28917760	268.15
7.26	23981948	311.98
7.50	50971322	265.31

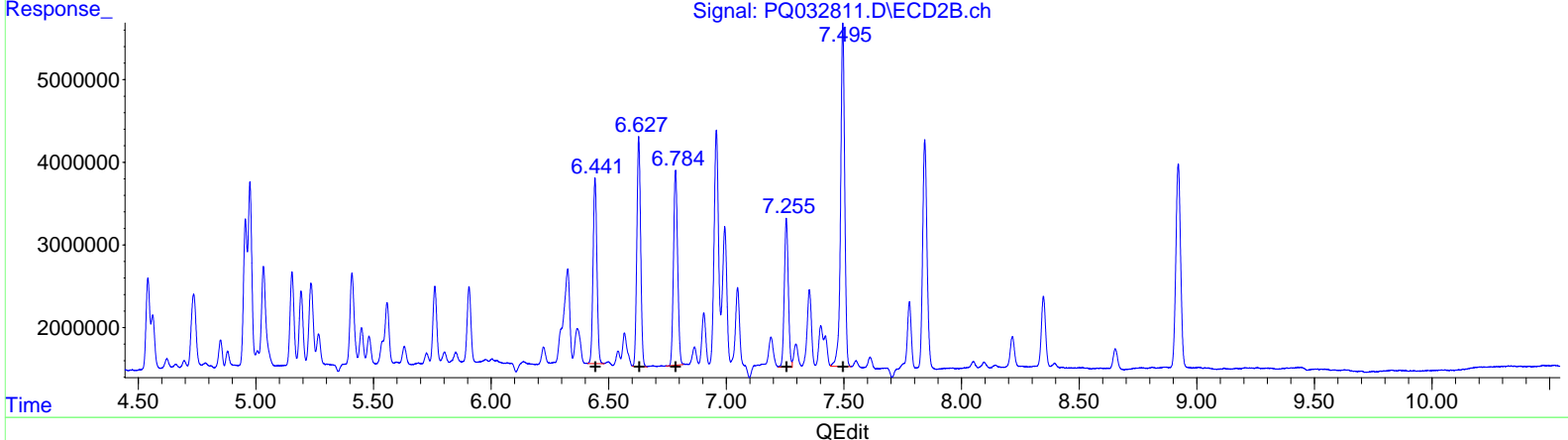
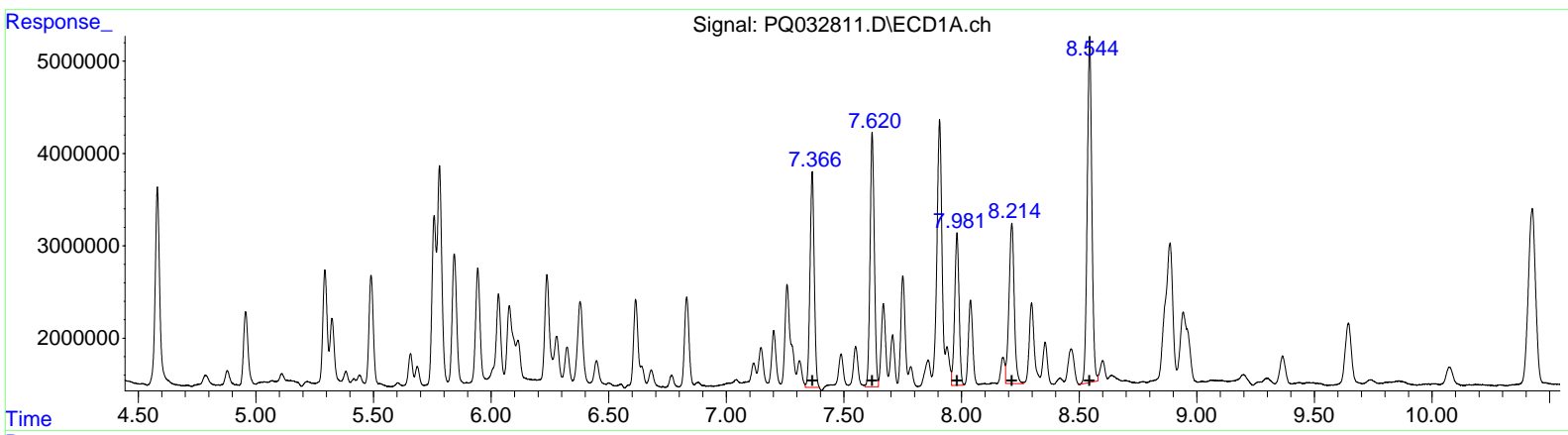
Data Path : Z:\pestpcbsrv\HPCHEM1\ECD_Q\Data\PQ101018\
 Data File : PQ032811.D
 Signal(s) : Signal #1: ECD1A.ch Signal #2: ECD2B.ch
 Acq On : 10 Oct 2018 12:27
 Operator : SM\SJ
 Sample : J5258-03MSD (Sig #1); J5250-03MSD (Sig #2)
 Misc :
 ALS Vial : 17 Sample Multiplier: 1

Instrument :
 ECD_Q
ClientSampled :
 ESNN1MSD

Manual Integrations
APPROVED
 Sohil
 10/11/2018 2:35:50 PM

Integration File signal 1: autoint1.e
 Integration File signal 2: autoint2.e
 Quant Time: Oct 11 03:22:51 2018
 Quant Method : Z:\pestpcbsrv\HPCHEM1\ECD_Q\Method\PQ100918CLP.M
 Quant Title : GC EXTRACTABLES
 QLast Update : Wed Oct 10 08:14:42 2018
 Response via : Initial Calibration
 Integrator: ChemStation

Volume Inj. : 1 µl
 Signal #1 Phase : ZB MR1 Signal #2 Phase: ZB MR2
 Signal #1 Info : 30Mx0.32mmx 0.5µm Signal #2 Info : 30M x 0.32mm x 0.25µm



(31) AR-1260-1 (L7)

R.T.	Response	Conc
7.37	29358488	274.49
7.62	34453210	272.84
7.98	21345414	274.04
8.21	26840149	265.15
8.54	51056076	270.38

(31) AR-1260-1 #2 (L7)

R.T.	Response	Conc
6.44	25789685	274.58
6.63	31404693	269.54
6.78	28917760	268.15
7.25	21221511	276.07
7.50	50135626	260.96

Data Path : Z:\pestpcbsrv\HPCHEM1\ECD_Q\Data\PQ101018\
 Data File : PQ032811.D
 Signal(s) : Signal #1: ECD1A.ch Signal #2: ECD2B.ch
 Acq On : 10 Oct 2018 12:27
 Operator : SM\SJ
 Sample : J5258-03MSD (Sig #1); J5250-03MSD (Sig #2)
 Misc :
 ALS Vial : 17 Sample Multiplier: 1

Instrument :
 ECD_Q
Client Sampled :
 ESNN1MSD

Manual Integrations
APPROVED

Sohil
 10/11/2018 2:35:50 PM

Integration File signal 1: autoint1.e
 Integration File signal 2: autoint2.e
 Quant Time: Oct 11 03:22:51 2018
 Quant Method : Z:\pestpcbsrv\HPCHEM1\ECD_Q\Method\PQ100918CLP.M
 Quant Title : GC EXTRACTABLES
 QLast Update : Wed Oct 10 08:14:42 2018
 Response via : Initial Calibration
 Integrator: ChemStation

Volume Inj. : 1 µl
 Signal #1 Phase : ZB MR1 Signal #2 Phase: ZB MR2
 Signal #1 Info : 30Mx0.32mmx 0.5µm Signal #2 Info : 30M x 0.32mm x 0.25µm

Compound	RT#1	RT#2	Resp#1	Resp#2	ng/ml	ng/ml

System Monitoring Compounds						
1) SA Tetrachlo...	4.582	3.861	28485546	20231086	13.885	13.008
2) SA Decachlor...	10.427	8.921	40230200	34639366	21.282	21.548
Target Compounds						
3) L1 AR-1016-1	5.758	4.956	21380543	17814435	307.060	311.181
4) L1 AR-1016-2	5.781	4.975	30950698	24326115	300.469	305.283
5) L1 AR-1016-3	5.844	5.154	18752034	13005671	299.471	313.539
6) L1 AR-1016-4	5.944	5.192	16334856	10247967	323.196	299.090
7) L1 AR-1016-5	6.237	5.409	15656669	13481099	303.831	295.050
31) L7 AR-1260-1	7.366	6.442	29358488	25789685	274.489m	274.580
32) L7 AR-1260-2	7.620	6.628	34453210	31404693	272.842m	269.544
33) L7 AR-1260-3	7.981	6.784	21345414	28917760	274.040	268.147
34) L7 AR-1260-4	8.214	7.255	26840149	21221511	265.147	276.072m
35) L7 AR-1260-5	8.545	7.495	51056076	50135626	270.385	260.963m

} 5510/12/18

(f)=RT Delta > 1/2 Window (#)=Amounts differ by > 25% (m)=manual int.