

Data Path : Z:\pestpcbsrv\HPCHEM1\ECD_Q\Data\PQ101019\
 Data File : PQ044215.D
 Signal(s) : Signal #1: ECD1A.ch Signal #2: ECD2B.ch
 Acq On : 10 Oct 2019 12:15
 Operator : HP\AJ
 Sample : AR1660CCC400
 Misc :
 ALS Vial : 3 Sample Multiplier: 1

Instrument :
 ECD_Q
 ClientSampleId :
 AR1660311

Integration File signal 1: autoint1.e
 Integration File signal 2: autoint2.e
 Quant Time: Oct 11 02:37:49 2019
 Quant Method : Z:\pestpcbsrv\HPCHEM1\ECD_Q\Method\PQ100819CLP.M
 Quant Title : GC EXTRACTABLES
 QLast Update : Thu Oct 10 02:55:10 2019
 Response via : Initial Calibration
 Integrator: ChemStation

Volume Inj. : 1 µl
 Signal #1 Phase : ZB MR1 Signal #2 Phase: ZB MR2
 Signal #1 Info : 30Mx0.32mmx 0.5µm Signal #2 Info : 30M x 0.32mm x 0.25µm

Compound	RT#1	RT#2	Resp#1	Resp#2	ng/ml	ng/ml

System Monitoring Compounds						
1) SA Tetrachlo...	5.319	4.355	83566337	94059369	21.495	21.071
2) SA Decachlor...	11.603	9.805	179.8E6	203.5E6	33.564	34.022
Target Compounds						
3) L1 AR-1016-1	6.640	5.638	50094858	56520552	441.418	412.038
4) L1 AR-1016-2	6.664	5.659	71001731	89014281	440.103	401.999
5) L1 AR-1016-3	6.731	5.857	44295711	43193823	435.185	413.906
6) L1 AR-1016-4	6.839	5.903	35411138	37696717	428.562	403.371
7) L1 AR-1016-5	7.156	6.139	34109324	50244111	450.968	410.894
8) L2 AR-1221-1	5.557	4.618	4968310	4997138	123.226	117.709
9) L2 AR-1221-2	5.664	4.721	6466188	6513414	221.846	221.616
10) L2 AR-1221-3	5.751	4.812	27641467	28784523	284.157	274.105
11) L3 AR-1232-1	5.751	4.812	27641467	28784523	329.394	311.050
12) L3 AR-1232-2	6.345	5.659	35987051	89014281	926.427	843.980
13) L3 AR-1232-3	6.664	5.857	71001731	43193823	925.511	874.052
14) L3 AR-1232-4	6.839	5.950	35411138	46544842	933.567	986.923
15) L3 AR-1232-5	6.936	6.139	31010935	50244111	1099.858	919.154
16) L4 AR-1242-1	6.640	5.638	50094858	56520552	513.112	476.862
17) L4 AR-1242-2	6.664	5.659	71001731	89014281	510.457	471.835
18) L4 AR-1242-3	6.731	5.857	44295711	43193823	498.417	467.018
19) L4 AR-1242-4	6.839	5.950	35411138	46544842	495.743	473.554
20) L4 AR-1242-5	7.628	6.523	5194365	36768555	68.324	288.551 #
21) L5 AR-1248-1	6.640	5.638	50094858	56520552	682.707	624.177
22) L5 AR-1248-2	6.936	5.903	31010935	37696717	313.052	271.972
23) L5 AR-1248-3	7.156	5.950	34109324	46544842	315.831	329.112
24) L5 AR-1248-4	7.585	6.139	5830699	50244111	46.311	292.516 #
25) L5 AR-1248-5	7.628	6.566	5194365	6104018	42.901	36.459
26) L6 AR-1254-1	7.557	6.523	23081869	36768555	171.539	126.064 #
27) L6 AR-1254-2	7.787	6.680	25876714	33521480	121.131	128.386
28) L6 AR-1254-3	8.174	7.125	15931019	82150919	64.748	188.028 #
29) L6 AR-1254-4	8.470	7.349	12174347	8997442	60.702	33.494 #
30) L6 AR-1254-5	8.904	7.784	98637063	131.0E6	412.113	327.518
31) L7 AR-1260-1	8.343	7.246	61549293	98145346	408.875	403.653
32) L7 AR-1260-2	8.609	7.442	78444703	119.6E6	398.579	396.159
33) L7 AR-1260-3	8.983	7.604	64843398	112.2E6	404.431	398.786
34) L7 AR-1260-4	9.231	8.092	79649866	98451299	407.929	391.346
35) L7 AR-1260-5	9.584	8.338	170.7E6	240.6E6	373.333	375.381
36) L8 AR-1262-1	9.046	7.784	33565221	131.0E6	309.051	671.094 #
37) L8 AR-1262-2	9.584	8.338	170.7E6	240.6E6	296.386	304.088
38) L8 AR-1262-3	9.949	8.628	117.2E6	54105327	282.618	170.603 #
39) L8 AR-1262-4	10.011	8.695	73962294	179.1E6	234.784	293.913 #
40) L8 AR-1262-5	10.762	9.214	58299367	64220779	229.353	229.037
41) L9 AR-1268-1	9.949	8.628	117.2E6	54105327	163.970	56.096 #

Data Path : Z:\pestpcbsrv\HPCHEM1\ECD_Q\Data\PQ101019\
 Data File : PQ044215.D
 Signal(s) : Signal #1: ECD1A.ch Signal #2: ECD2B.ch
 Acq On : 10 Oct 2019 12:15
 Operator : HP\AJ
 Sample : AR1660CCC400
 Misc :
 ALS Vial : 3 Sample Multiplier: 1

Instrument :
 ECD_Q
 ClientSampleId :
 AR1660311

Integration File signal 1: autoint1.e
 Integration File signal 2: autoint2.e
 Quant Time: Oct 11 02:37:49 2019
 Quant Method : Z:\pestpcbsrv\HPCHEM1\ECD_Q\Method\PQ100819CLP.M
 Quant Title : GC EXTRACTABLES
 QLast Update : Thu Oct 10 02:55:10 2019
 Response via : Initial Calibration
 Integrator: ChemStation

Volume Inj. : 1 µl
 Signal #1 Phase : ZB MR1 Signal #2 Phase: ZB MR2
 Signal #1 Info : 30Mx0.32mmx 0.5µm Signal #2 Info : 30M x 0.32mm x 0.25µm

	Compound	RT#1	RT#2	Resp#1	Resp#2	ng/ml	ng/ml
42)	L9 AR-1268-2	10.011	8.695	73962294	179.1E6	108.836	196.975 #
43)	L9 AR-1268-3	10.286	8.908	3636175	4093854	6.335	5.404
44)	L9 AR-1268-4	10.762	9.214	58299367	64220779	202.354	196.399
45)	L9 AR-1268-5	11.225	9.529	16317790	17356336	7.506	6.663

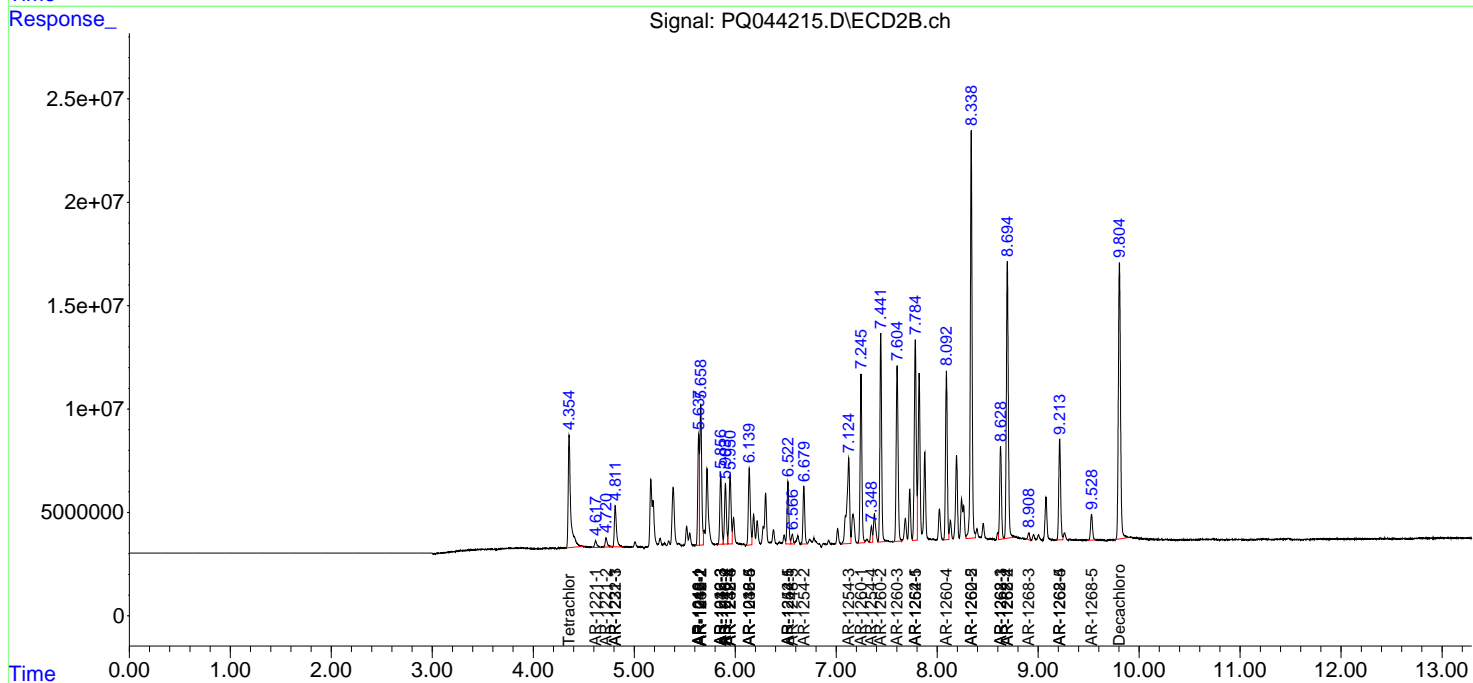
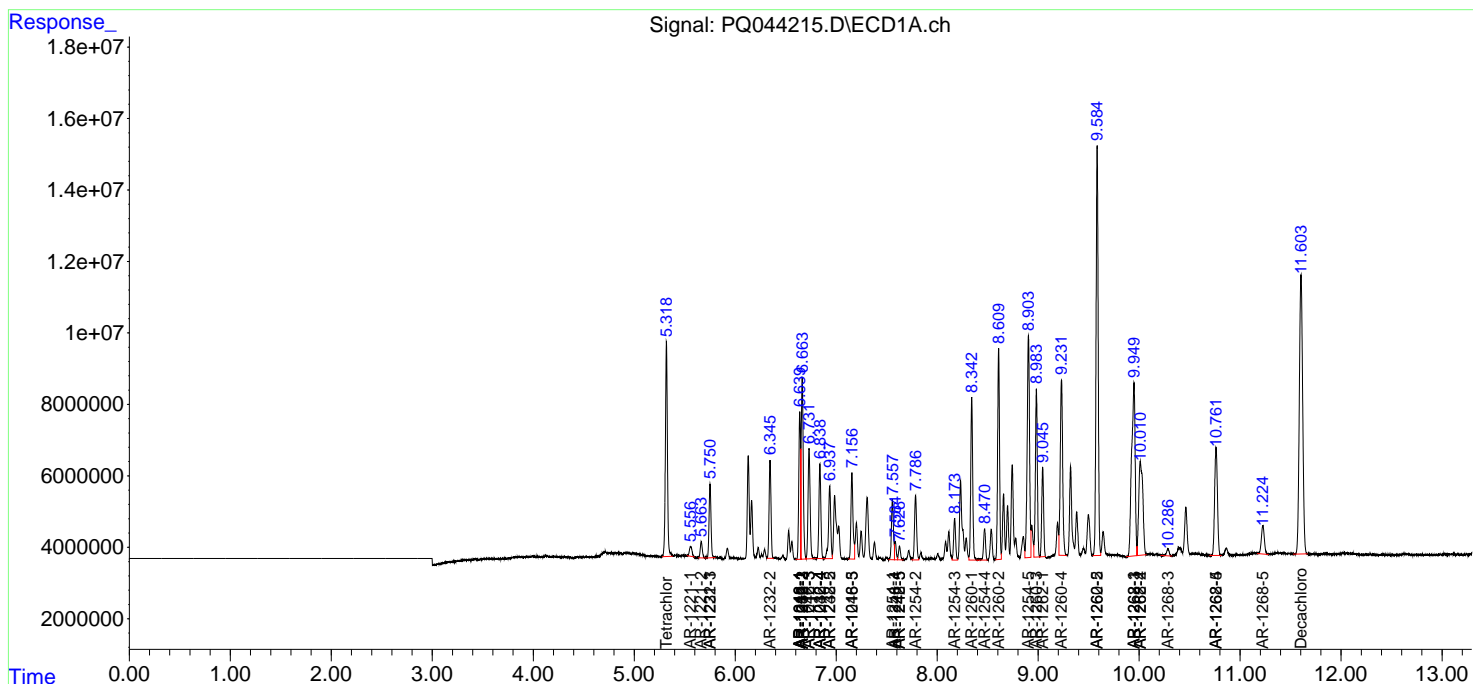
(f)=RT Delta > 1/2 Window (#)=Amounts differ by > 25% (m)=manual int.

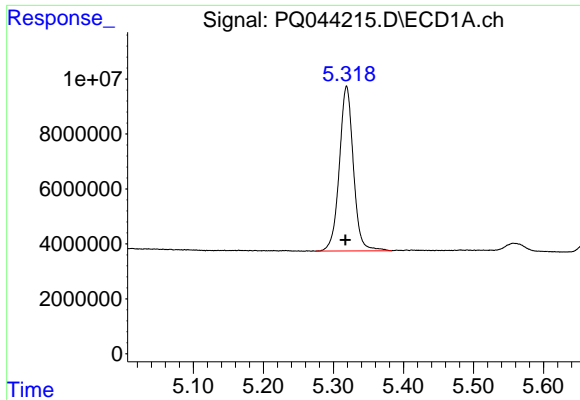
Data Path : Z:\pestpcbsrv\HPCHEM1\ECD_Q\Data\PQ101019\
 Data File : PQ044215.D
 Signal(s) : Signal #1: ECD1A.ch Signal #2: ECD2B.ch
 Acq On : 10 Oct 2019 12:15
 Operator : HP\AJ
 Sample : AR1660CCC400
 Misc :
 ALS Vial : 3 Sample Multiplier: 1

Instrument :
 ECD_Q
 ClientSampled :
 AR1660311

Integration File signal 1: autoint1.e
 Integration File signal 2: autoint2.e
 Quant Time: Oct 11 02:37:49 2019
 Quant Method : Z:\pestpcbsrv\HPCHEM1\ECD_Q\Method\PQ100819CLP.M
 Quant Title : GC EXTRACTABLES
 QLast Update : Thu Oct 10 02:55:10 2019
 Response via : Initial Calibration
 Integrator: ChemStation

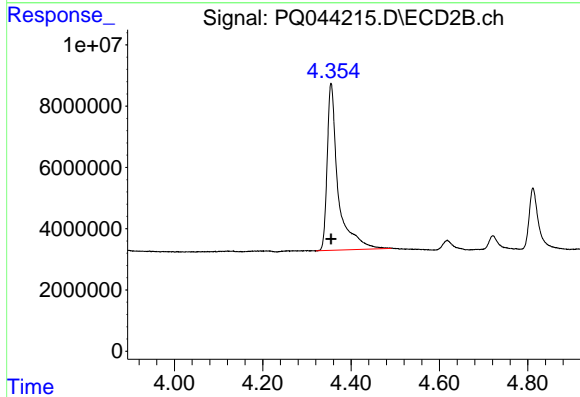
Volume Inj. : 1 µl
 Signal #1 Phase : ZB MR1 Signal #2 Phase: ZB MR2
 Signal #1 Info : 30Mx0.32mmx 0.5µm Signal #2 Info : 30M x 0.32mm x 0.25µm



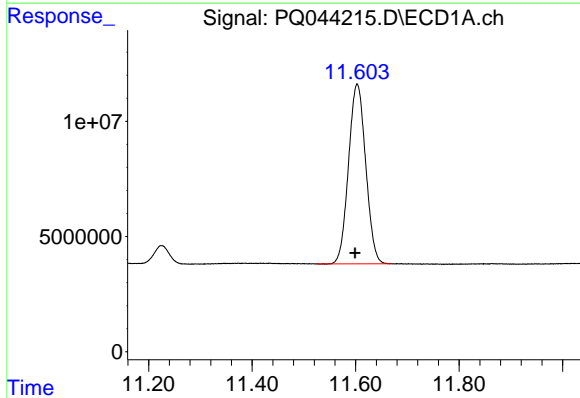


#1 Tetrachloro-m-xylene
 R.T.: 5.319 min
 Delta R.T.: 0.002 min
 Response: 83566337
 Conc: 21.50 ng/ml

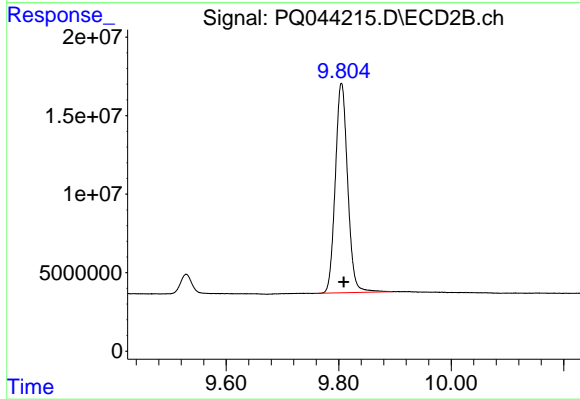
Instrument :
 ECD_Q
 ClientSampleId :
 AR1660311



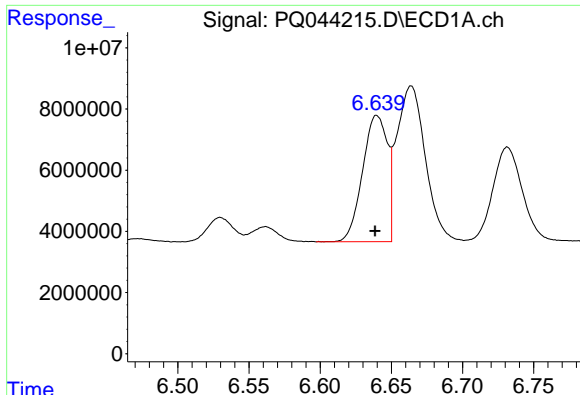
#1 Tetrachloro-m-xylene
 R.T.: 4.355 min
 Delta R.T.: 0.000 min
 Response: 94059369
 Conc: 21.07 ng/ml



#2 Decachlorobiphenyl
 R.T.: 11.603 min
 Delta R.T.: 0.004 min
 Response: 179822101
 Conc: 33.56 ng/ml



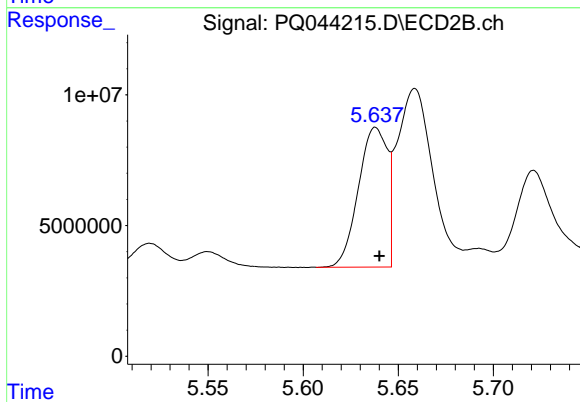
#2 Decachlorobiphenyl
 R.T.: 9.805 min
 Delta R.T.: -0.004 min
 Response: 203496821
 Conc: 34.02 ng/ml



#3 AR-1016-1

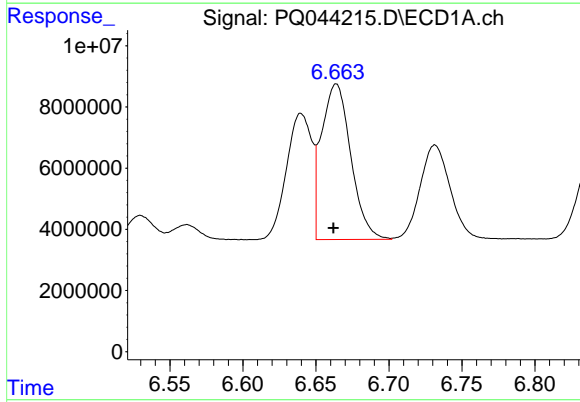
R.T.: 6.640 min
 Delta R.T.: 0.001 min
 Response: 50094858
 Conc: 441.42 ng/ml

Instrument :
 ECD_Q
 ClientSampleId :
 AR1660311



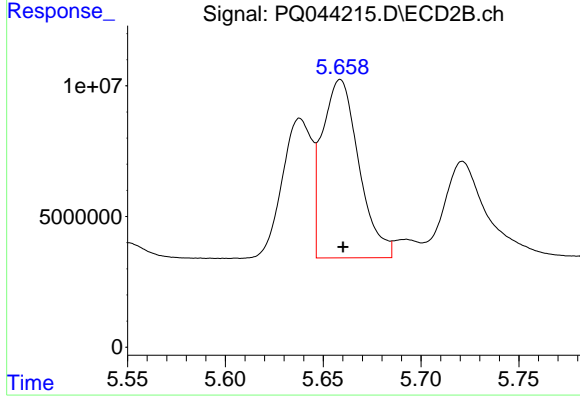
#3 AR-1016-1

R.T.: 5.638 min
 Delta R.T.: -0.002 min
 Response: 56520552
 Conc: 412.04 ng/ml



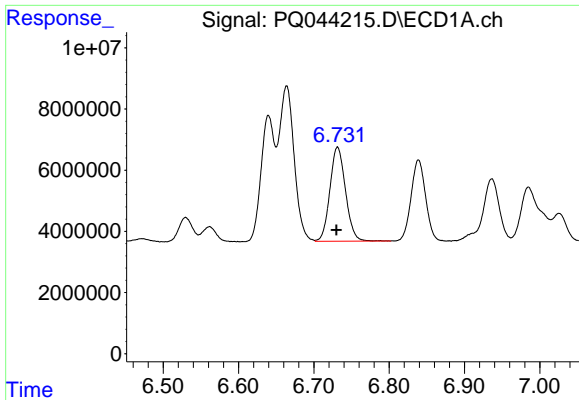
#4 AR-1016-2

R.T.: 6.664 min
 Delta R.T.: 0.002 min
 Response: 71001731
 Conc: 440.10 ng/ml



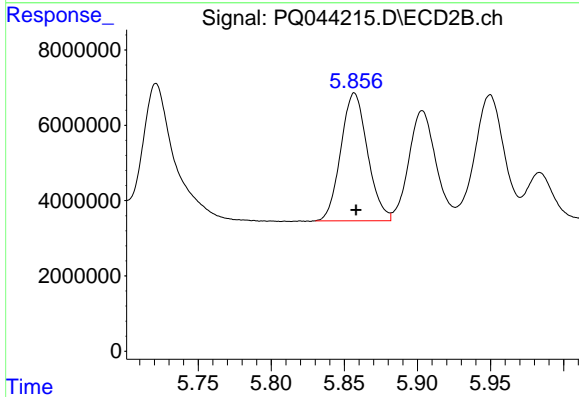
#4 AR-1016-2

R.T.: 5.659 min
 Delta R.T.: -0.001 min
 Response: 89014281
 Conc: 402.00 ng/ml

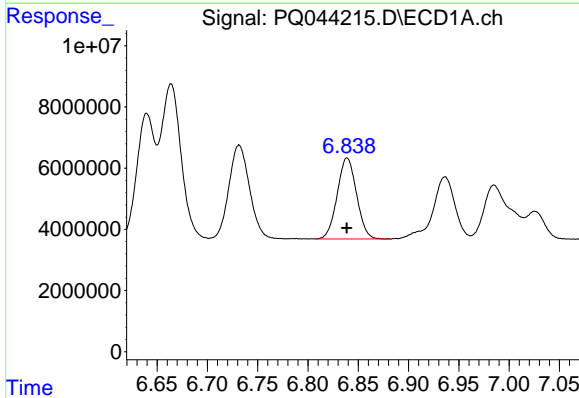


#5 AR-1016-3
 R.T.: 6.731 min
 Delta R.T.: 0.001 min
 Response: 44295711
 Conc: 435.18 ng/ml

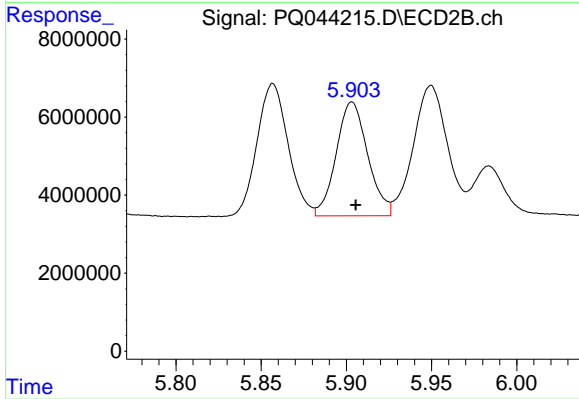
Instrument :
 ECD_Q
 ClientSampleId :
 AR1660311



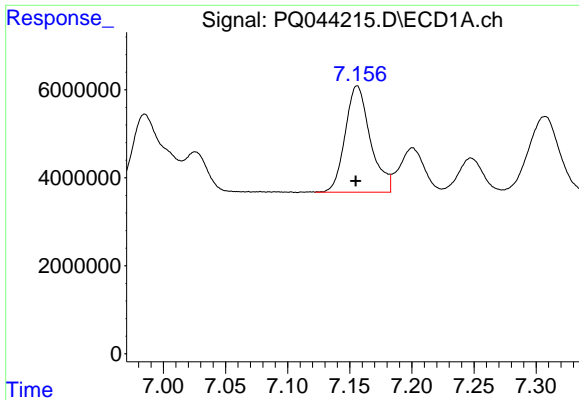
#5 AR-1016-3
 R.T.: 5.857 min
 Delta R.T.: -0.001 min
 Response: 43193823
 Conc: 413.91 ng/ml



#6 AR-1016-4
 R.T.: 6.839 min
 Delta R.T.: 0.000 min
 Response: 35411138
 Conc: 428.56 ng/ml



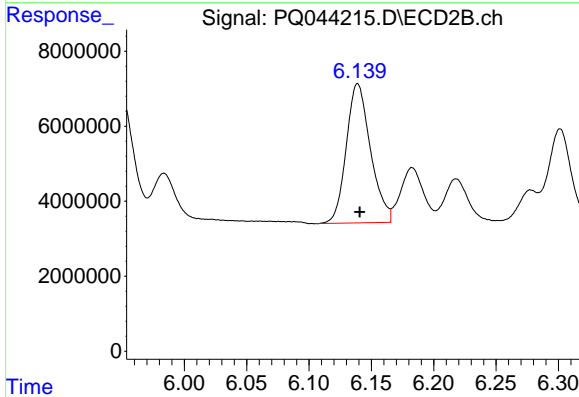
#6 AR-1016-4
 R.T.: 5.903 min
 Delta R.T.: -0.002 min
 Response: 37696717
 Conc: 403.37 ng/ml



#7 AR-1016-5

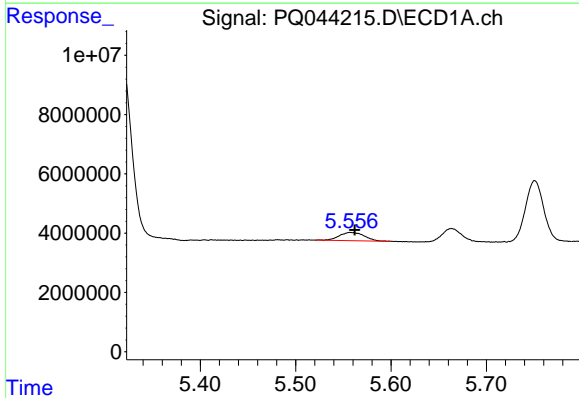
R.T.: 7.156 min
 Delta R.T.: 0.001 min
 Response: 34109324
 Conc: 450.97 ng/ml

Instrument :
 ECD_Q
ClientSampled :
 AR1660311



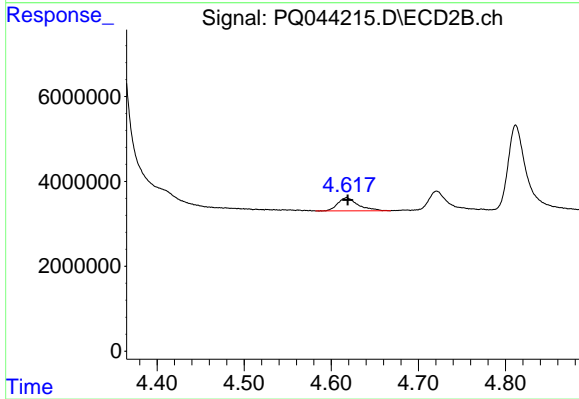
#7 AR-1016-5

R.T.: 6.139 min
 Delta R.T.: -0.002 min
 Response: 50244111
 Conc: 410.89 ng/ml



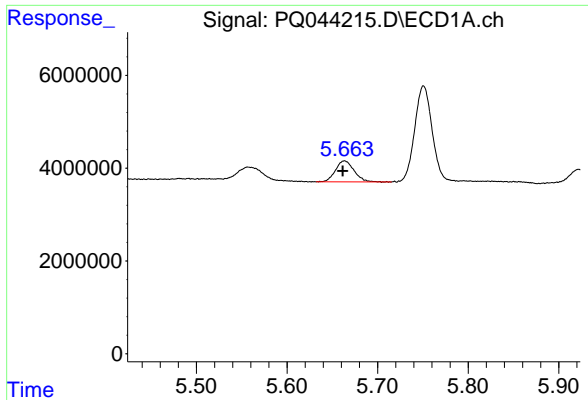
#8 AR-1221-1

R.T.: 5.557 min
 Delta R.T.: -0.005 min
 Response: 4968310
 Conc: 123.23 ng/ml



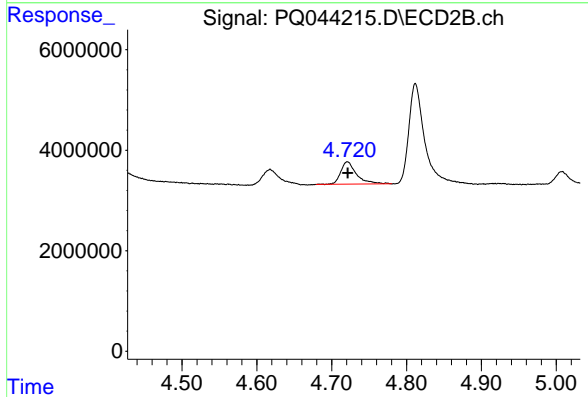
#8 AR-1221-1

R.T.: 4.618 min
 Delta R.T.: -0.001 min
 Response: 4997138
 Conc: 117.71 ng/ml

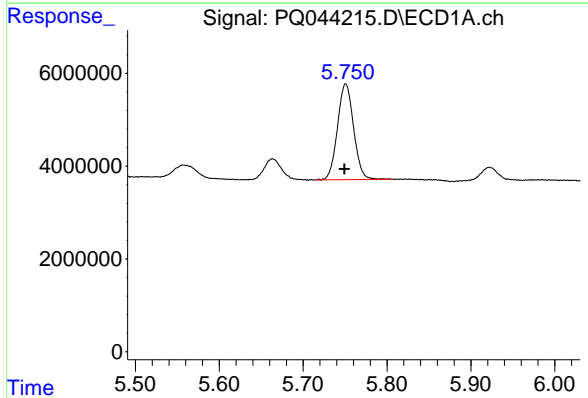


#9 AR-1221-2
 R.T.: 5.664 min
 Delta R.T.: 0.002 min
 Response: 6466188
 Conc: 221.85 ng/ml

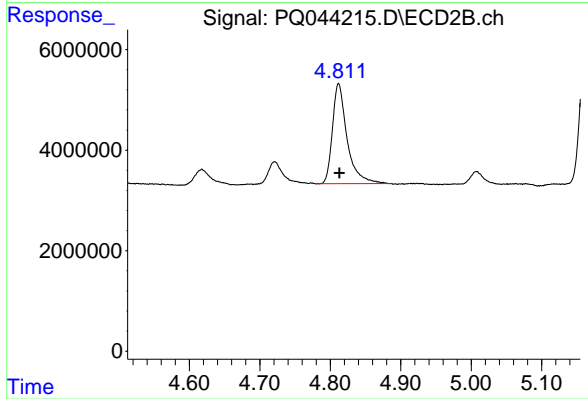
Instrument :
 ECD_Q
 ClientSampleId :
 AR1660311



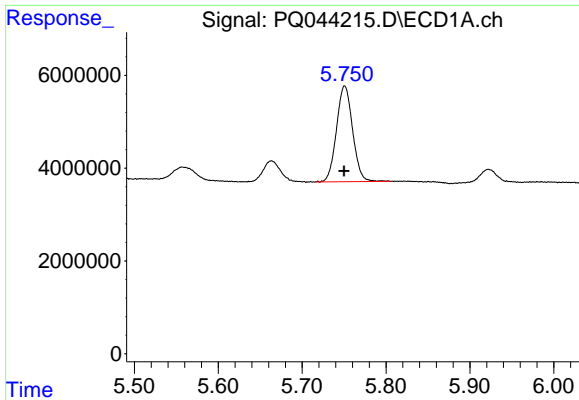
#9 AR-1221-2
 R.T.: 4.721 min
 Delta R.T.: 0.000 min
 Response: 6513414
 Conc: 221.62 ng/ml



#10 AR-1221-3
 R.T.: 5.751 min
 Delta R.T.: 0.002 min
 Response: 27641467
 Conc: 284.16 ng/ml

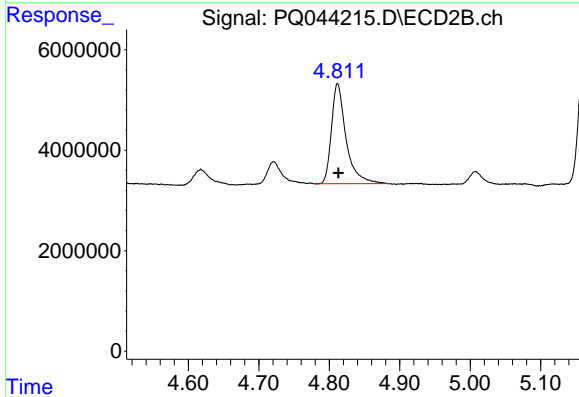


#10 AR-1221-3
 R.T.: 4.812 min
 Delta R.T.: -0.001 min
 Response: 28784523
 Conc: 274.10 ng/ml

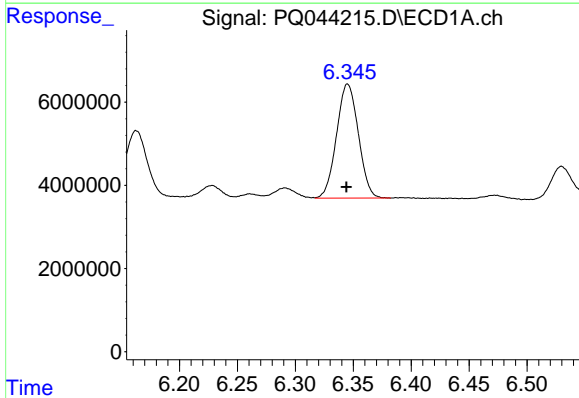


#11 AR-1232-1
 R.T.: 5.751 min
 Delta R.T.: 0.001 min
 Response: 27641467
 Conc: 329.39 ng/ml

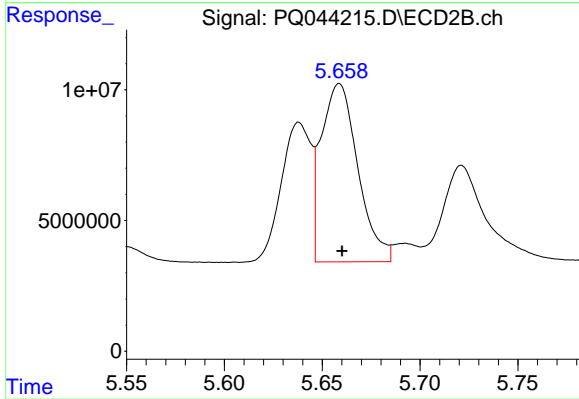
Instrument :
 ECD_Q
ClientSampleId :
 AR1660311



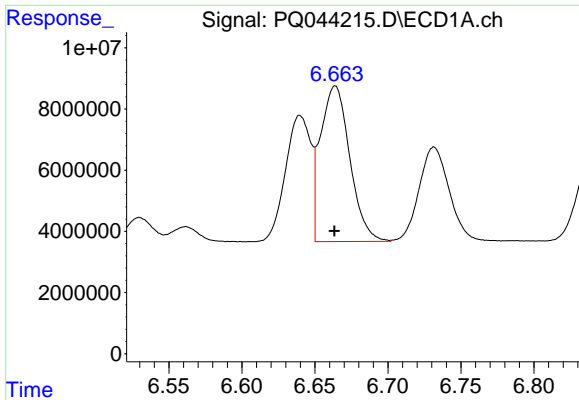
#11 AR-1232-1
 R.T.: 4.812 min
 Delta R.T.: -0.001 min
 Response: 28784523
 Conc: 311.05 ng/ml



#12 AR-1232-2
 R.T.: 6.345 min
 Delta R.T.: 0.001 min
 Response: 35987051
 Conc: 926.43 ng/ml



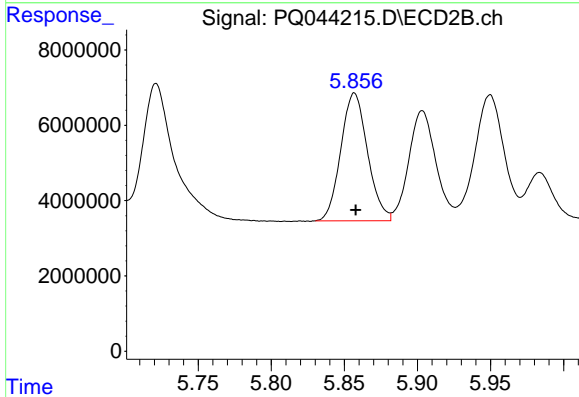
#12 AR-1232-2
 R.T.: 5.659 min
 Delta R.T.: -0.001 min
 Response: 89014281
 Conc: 843.98 ng/ml



#13 AR-1232-3

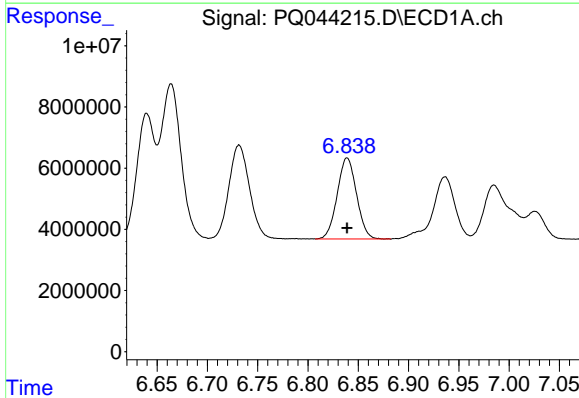
R.T.: 6.664 min
 Delta R.T.: 0.000 min
 Response: 71001731
 Conc: 925.51 ng/ml

Instrument :
 ECD_Q
 ClientSampleId :
 AR1660311



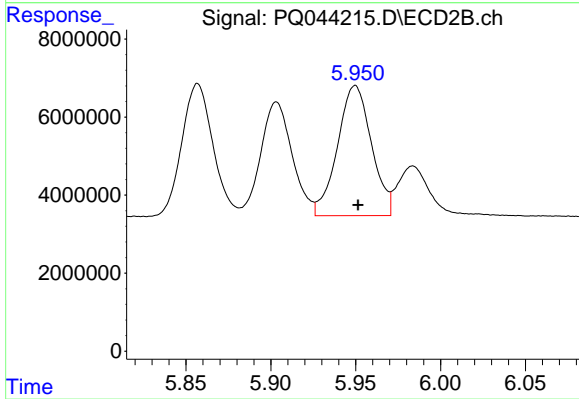
#13 AR-1232-3

R.T.: 5.857 min
 Delta R.T.: 0.000 min
 Response: 43193823
 Conc: 874.05 ng/ml



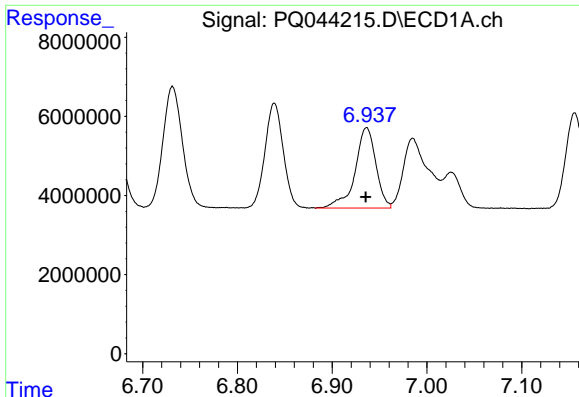
#14 AR-1232-4

R.T.: 6.839 min
 Delta R.T.: 0.000 min
 Response: 35411138
 Conc: 933.57 ng/ml



#14 AR-1232-4

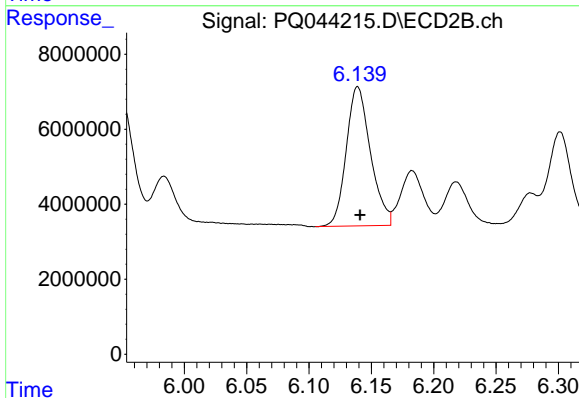
R.T.: 5.950 min
 Delta R.T.: -0.002 min
 Response: 46544842
 Conc: 986.92 ng/ml



#15 AR-1232-5

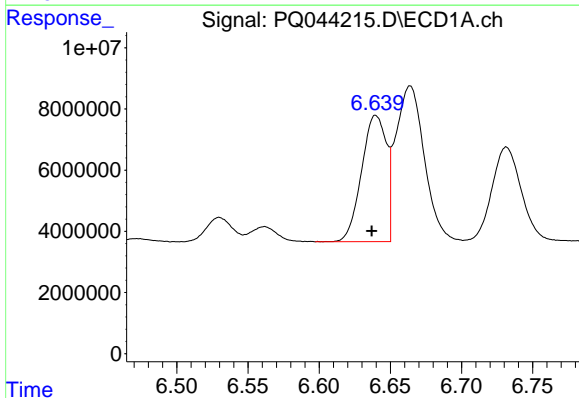
R.T.: 6.936 min
 Delta R.T.: 0.000 min
 Response: 31010935
 Conc: 1099.86 ng/ml

Instrument :
 ECD_Q
 ClientSampleId :
 AR1660311



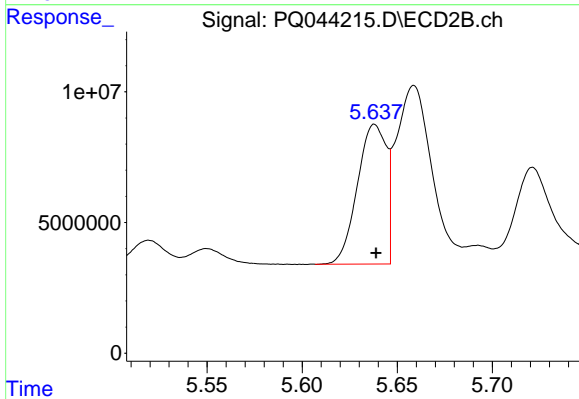
#15 AR-1232-5

R.T.: 6.139 min
 Delta R.T.: -0.002 min
 Response: 50244111
 Conc: 919.15 ng/ml



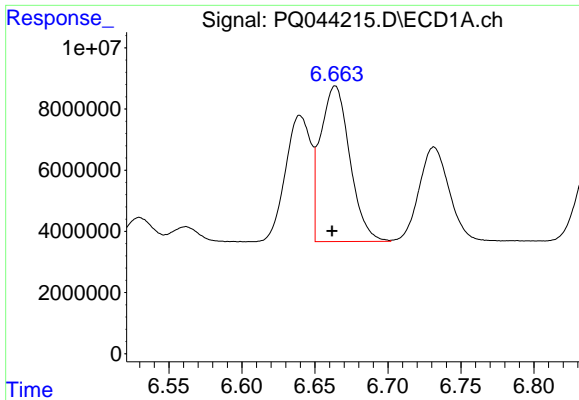
#16 AR-1242-1

R.T.: 6.640 min
 Delta R.T.: 0.003 min
 Response: 50094858
 Conc: 513.11 ng/ml



#16 AR-1242-1

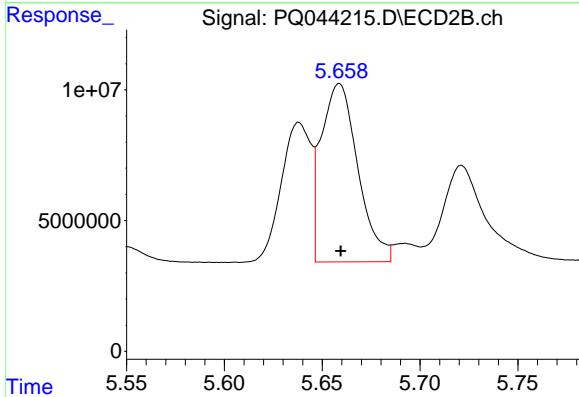
R.T.: 5.638 min
 Delta R.T.: 0.000 min
 Response: 56520552
 Conc: 476.86 ng/ml



#17 AR-1242-2

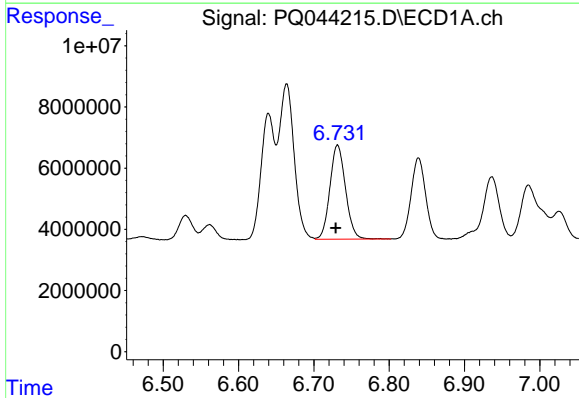
R.T.: 6.664 min
 Delta R.T.: 0.002 min
 Response: 71001731
 Conc: 510.46 ng/ml

Instrument :
 ECD_Q
ClientSampled :
 AR1660311



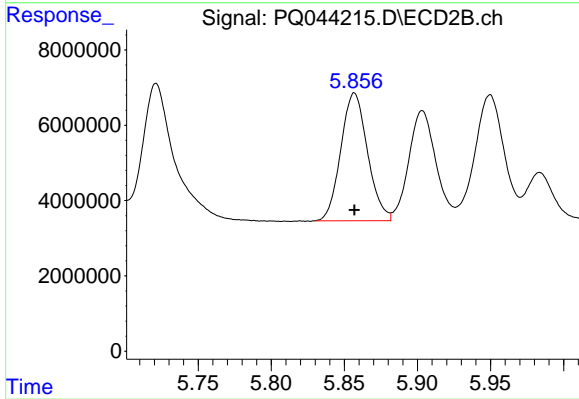
#17 AR-1242-2

R.T.: 5.659 min
 Delta R.T.: 0.000 min
 Response: 89014281
 Conc: 471.84 ng/ml



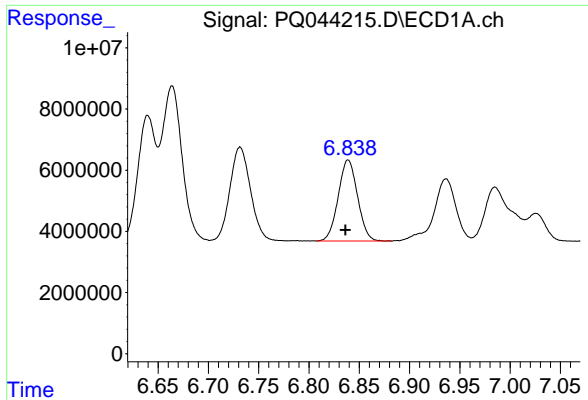
#18 AR-1242-3

R.T.: 6.731 min
 Delta R.T.: 0.002 min
 Response: 44295711
 Conc: 498.42 ng/ml



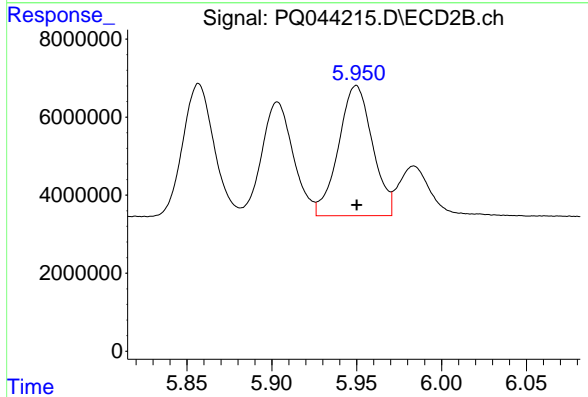
#18 AR-1242-3

R.T.: 5.857 min
 Delta R.T.: 0.000 min
 Response: 43193823
 Conc: 467.02 ng/ml

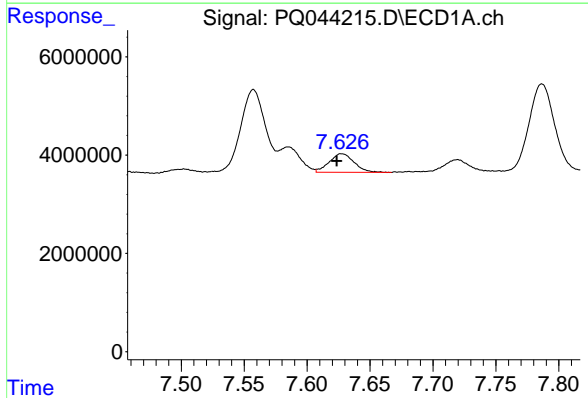


#19 AR-1242-4
 R.T.: 6.839 min
 Delta R.T.: 0.003 min
 Response: 35411138
 Conc: 495.74 ng/ml

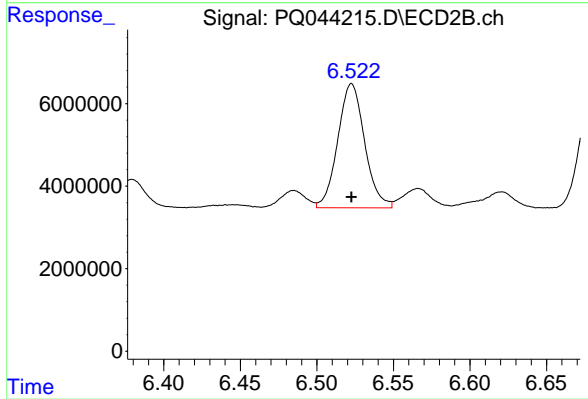
Instrument :
 ECD_Q
 ClientSampleId :
 AR1660311



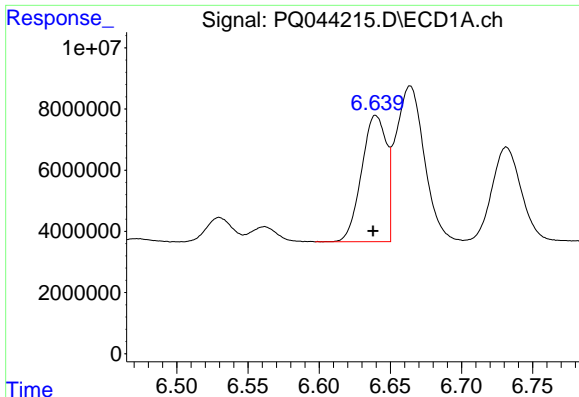
#19 AR-1242-4
 R.T.: 5.950 min
 Delta R.T.: 0.000 min
 Response: 46544842
 Conc: 473.55 ng/ml



#20 AR-1242-5
 R.T.: 7.628 min
 Delta R.T.: 0.004 min
 Response: 5194365
 Conc: 68.32 ng/ml



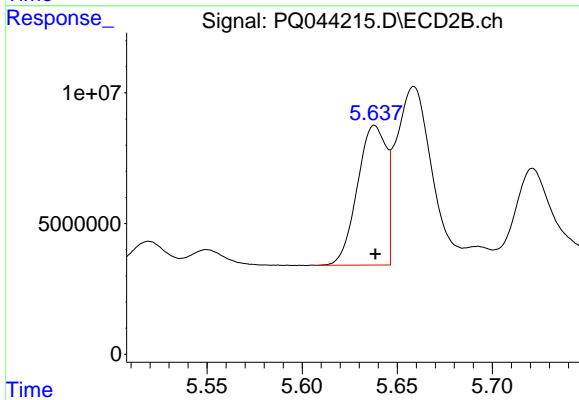
#20 AR-1242-5
 R.T.: 6.523 min
 Delta R.T.: 0.000 min
 Response: 36768555
 Conc: 288.55 ng/ml



#21 AR-1248-1

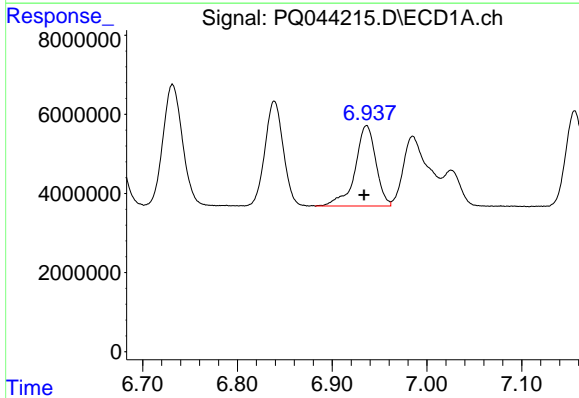
R.T.: 6.640 min
 Delta R.T.: 0.002 min
 Response: 50094858
 Conc: 682.71 ng/ml

Instrument :
 ECD_Q
 ClientSampled :
 AR1660311



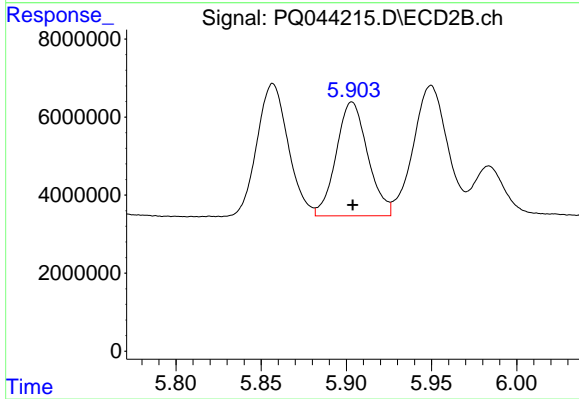
#21 AR-1248-1

R.T.: 5.638 min
 Delta R.T.: 0.000 min
 Response: 56520552
 Conc: 624.18 ng/ml



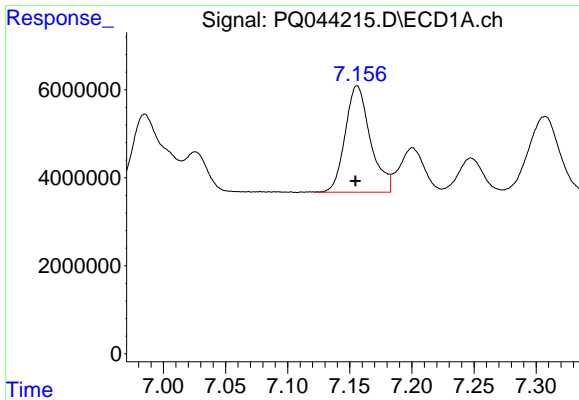
#22 AR-1248-2

R.T.: 6.936 min
 Delta R.T.: 0.002 min
 Response: 31010935
 Conc: 313.05 ng/ml



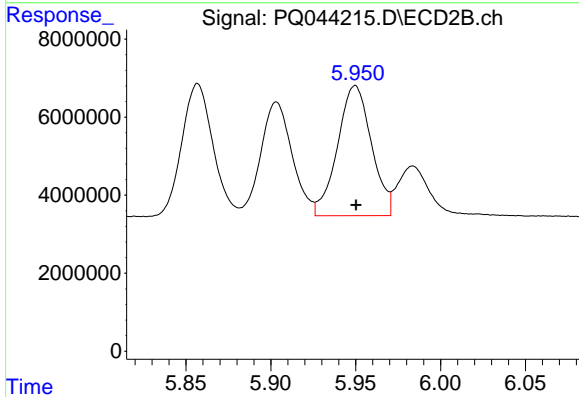
#22 AR-1248-2

R.T.: 5.903 min
 Delta R.T.: 0.000 min
 Response: 37696717
 Conc: 271.97 ng/ml

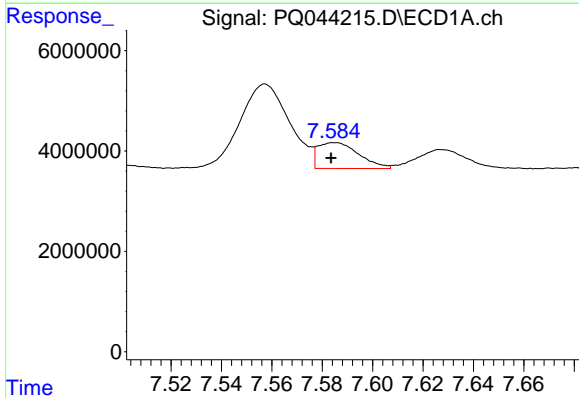


#23 AR-1248-3
 R.T.: 7.156 min
 Delta R.T.: 0.001 min
 Response: 34109324
 Conc: 315.83 ng/ml

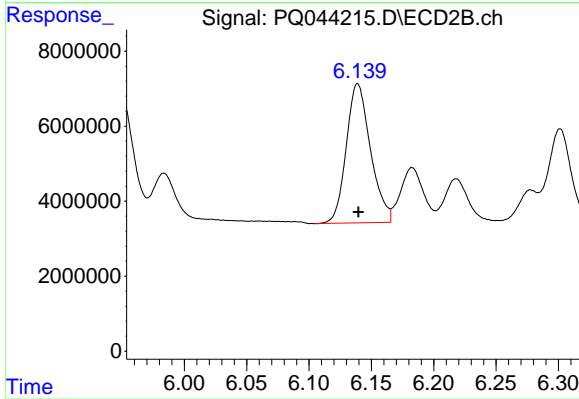
Instrument :
 ECD_Q
 ClientSampleId :
 AR1660311



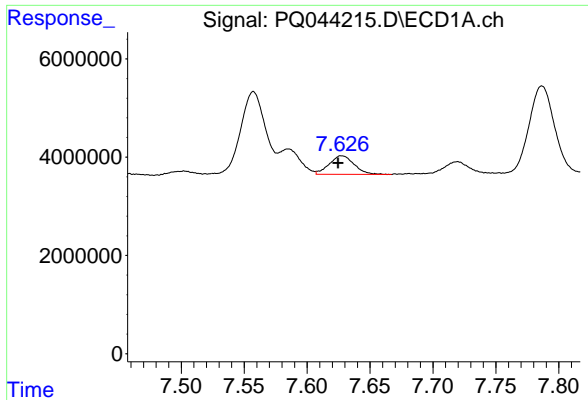
#23 AR-1248-3
 R.T.: 5.950 min
 Delta R.T.: 0.000 min
 Response: 46544842
 Conc: 329.11 ng/ml



#24 AR-1248-4
 R.T.: 7.585 min
 Delta R.T.: 0.002 min
 Response: 5830699
 Conc: 46.31 ng/ml

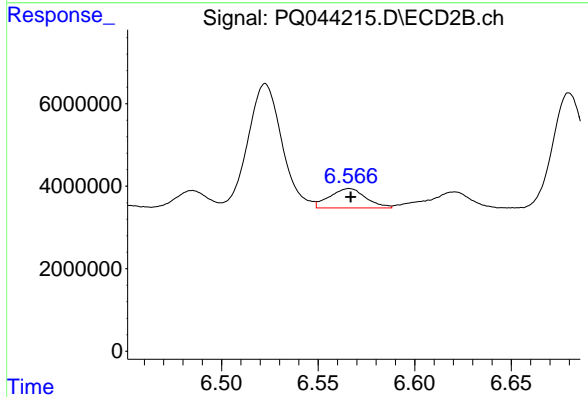


#24 AR-1248-4
 R.T.: 6.139 min
 Delta R.T.: 0.000 min
 Response: 50244111
 Conc: 292.52 ng/ml

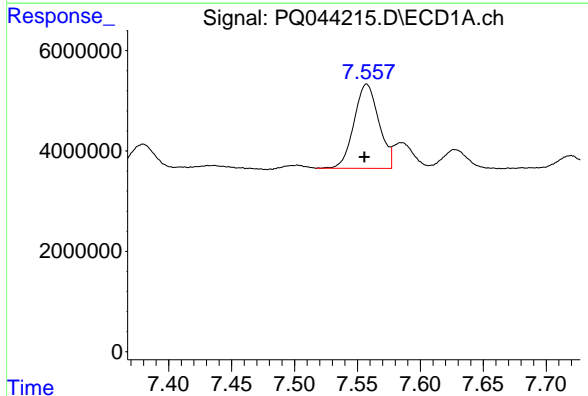


#25 AR-1248-5
 R.T.: 7.628 min
 Delta R.T.: 0.003 min
 Response: 5194365
 Conc: 42.90 ng/ml

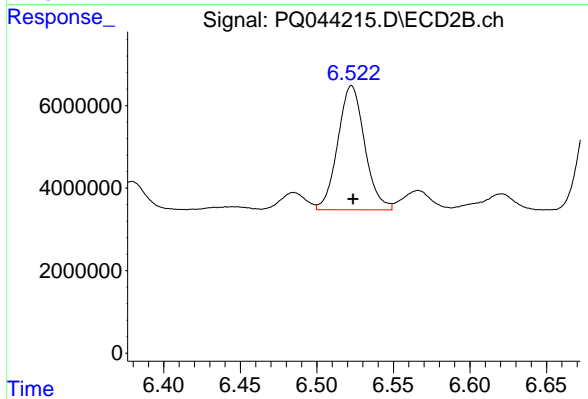
Instrument :
 ECD_Q
 ClientSampleId :
 AR1660311



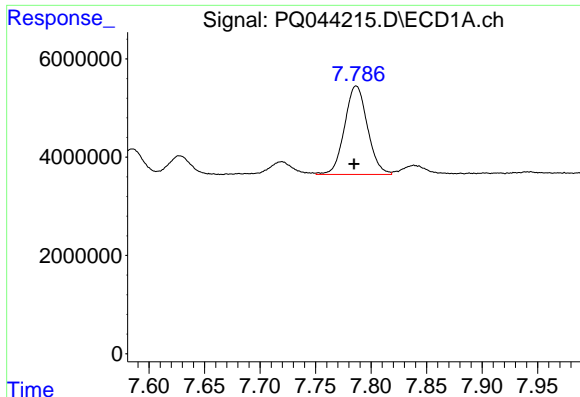
#25 AR-1248-5
 R.T.: 6.566 min
 Delta R.T.: 0.000 min
 Response: 6104018
 Conc: 36.46 ng/ml



#26 AR-1254-1
 R.T.: 7.557 min
 Delta R.T.: 0.002 min
 Response: 23081869
 Conc: 171.54 ng/ml



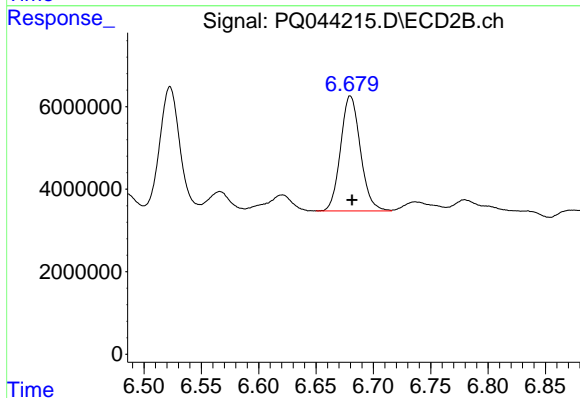
#26 AR-1254-1
 R.T.: 6.523 min
 Delta R.T.: 0.000 min
 Response: 36768555
 Conc: 126.06 ng/ml



#27 AR-1254-2

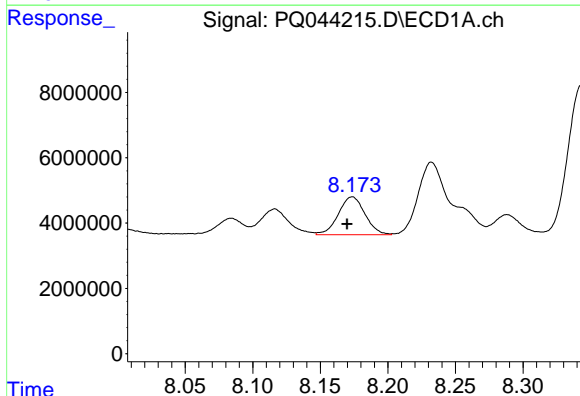
R.T.: 7.787 min
 Delta R.T.: 0.002 min
 Response: 25876714
 Conc: 121.13 ng/ml

Instrument :
 ECD_Q
 ClientSampled :
 AR1660311



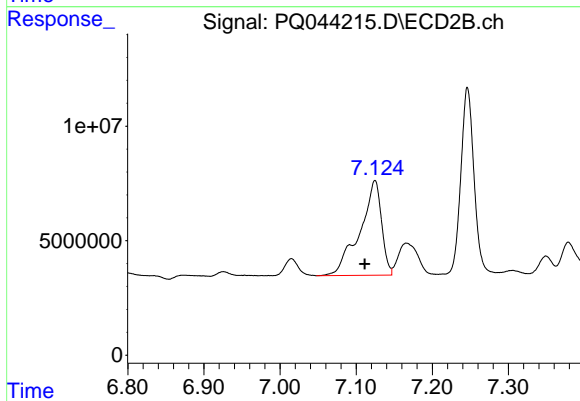
#27 AR-1254-2

R.T.: 6.680 min
 Delta R.T.: -0.002 min
 Response: 33521480
 Conc: 128.39 ng/ml



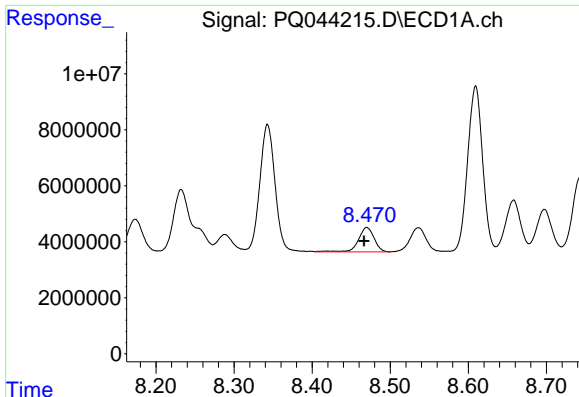
#28 AR-1254-3

R.T.: 8.174 min
 Delta R.T.: 0.004 min
 Response: 15931019
 Conc: 64.75 ng/ml



#28 AR-1254-3

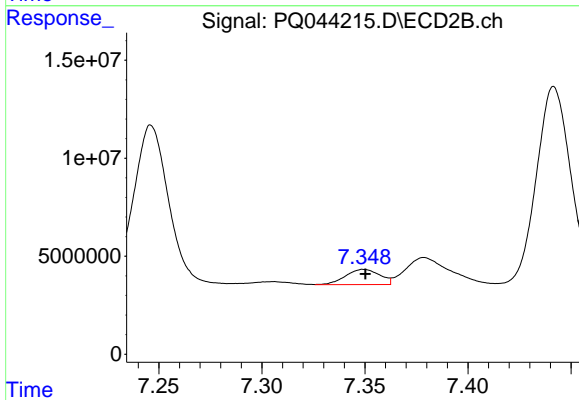
R.T.: 7.125 min
 Delta R.T.: 0.014 min
 Response: 82150919
 Conc: 188.03 ng/ml



#29 AR-1254-4

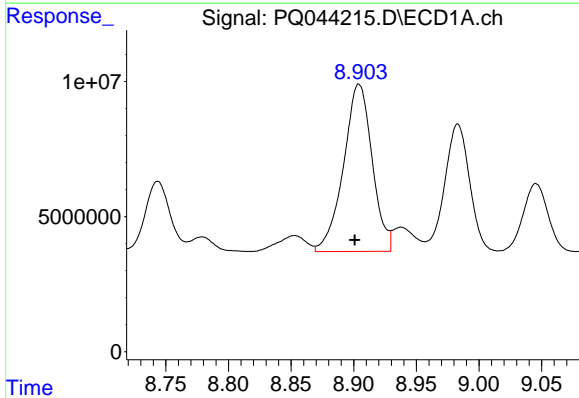
R.T.: 8.470 min
 Delta R.T.: 0.003 min
 Response: 12174347
 Conc: 60.70 ng/ml

Instrument :
 ECD_Q
 ClientSampleId :
 AR1660311



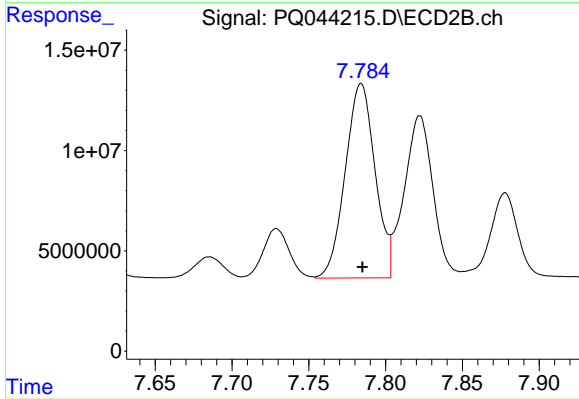
#29 AR-1254-4

R.T.: 7.349 min
 Delta R.T.: 0.000 min
 Response: 8997442
 Conc: 33.49 ng/ml



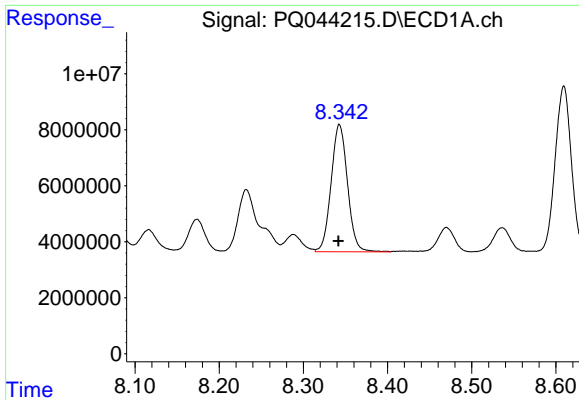
#30 AR-1254-5

R.T.: 8.904 min
 Delta R.T.: 0.003 min
 Response: 98637063
 Conc: 412.11 ng/ml



#30 AR-1254-5

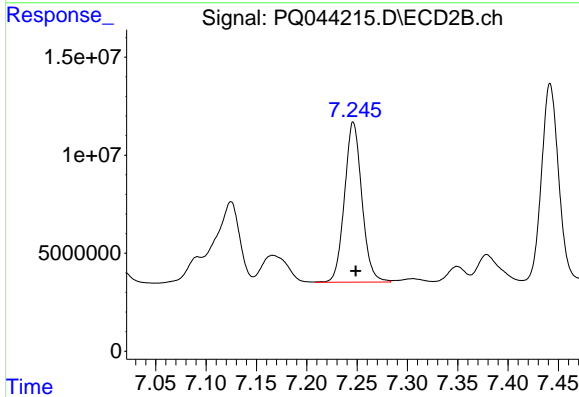
R.T.: 7.784 min
 Delta R.T.: 0.000 min
 Response: 130962508
 Conc: 327.52 ng/ml



#31 AR-1260-1

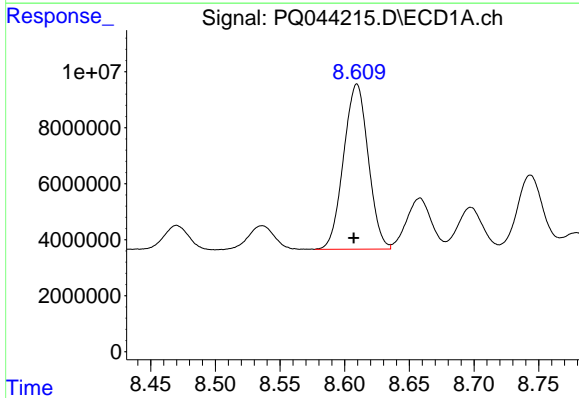
R.T.: 8.343 min
 Delta R.T.: 0.001 min
 Response: 61549293
 Conc: 408.87 ng/ml

Instrument :
 ECD_Q
 ClientSampled :
 AR1660311



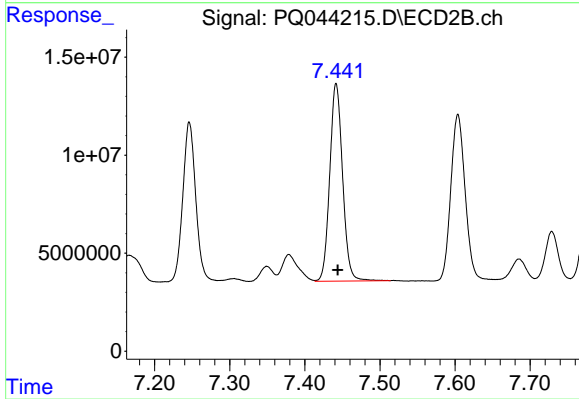
#31 AR-1260-1

R.T.: 7.246 min
 Delta R.T.: -0.002 min
 Response: 98145346
 Conc: 403.65 ng/ml



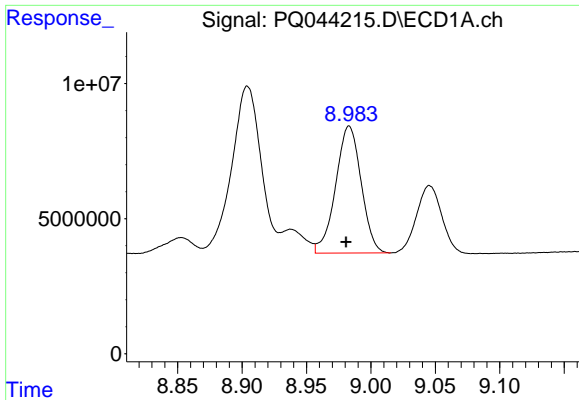
#32 AR-1260-2

R.T.: 8.609 min
 Delta R.T.: 0.003 min
 Response: 78444703
 Conc: 398.58 ng/ml



#32 AR-1260-2

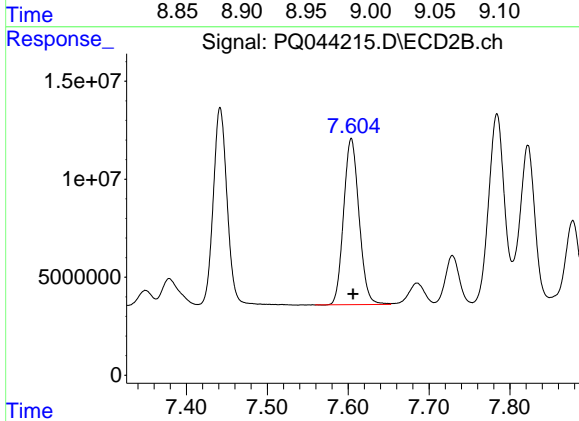
R.T.: 7.442 min
 Delta R.T.: -0.002 min
 Response: 119582587
 Conc: 396.16 ng/ml



#33 AR-1260-3

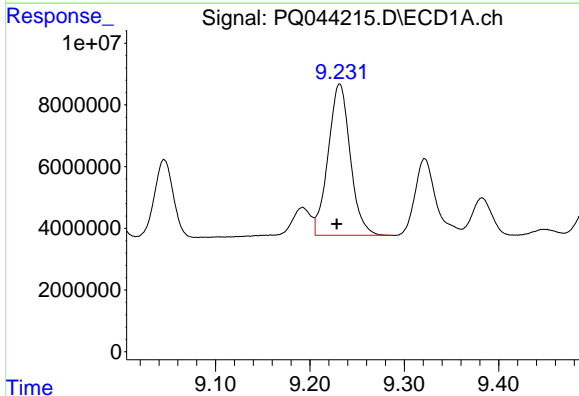
R.T.: 8.983 min
 Delta R.T.: 0.002 min
 Response: 64843398
 Conc: 404.43 ng/ml

Instrument :
 ECD_Q
 ClientSampled :
 AR1660311



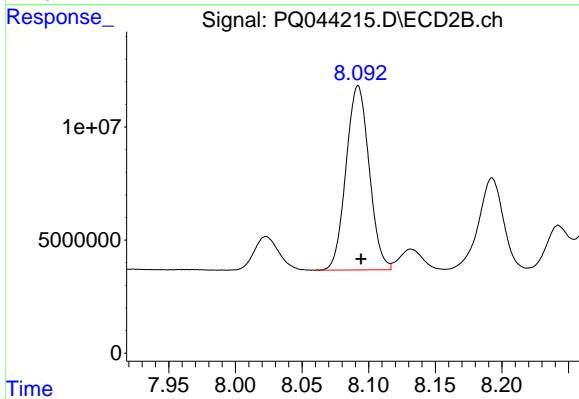
#33 AR-1260-3

R.T.: 7.604 min
 Delta R.T.: -0.002 min
 Response: 112226223
 Conc: 398.79 ng/ml



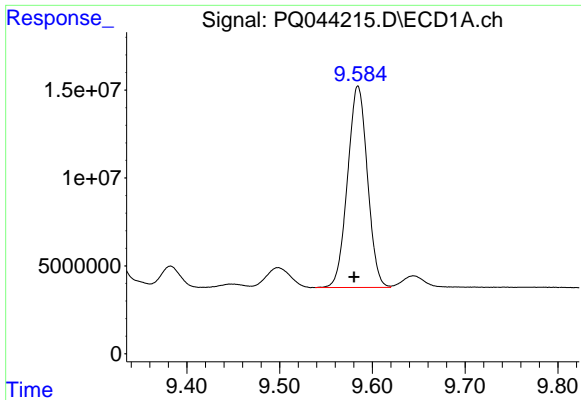
#34 AR-1260-4

R.T.: 9.231 min
 Delta R.T.: 0.003 min
 Response: 79649866
 Conc: 407.93 ng/ml



#34 AR-1260-4

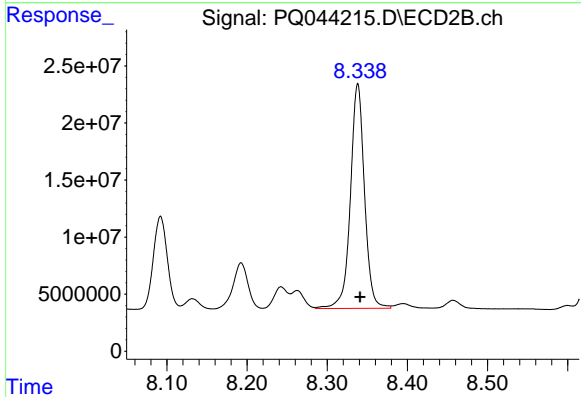
R.T.: 8.092 min
 Delta R.T.: -0.002 min
 Response: 98451299
 Conc: 391.35 ng/ml



#35 AR-1260-5

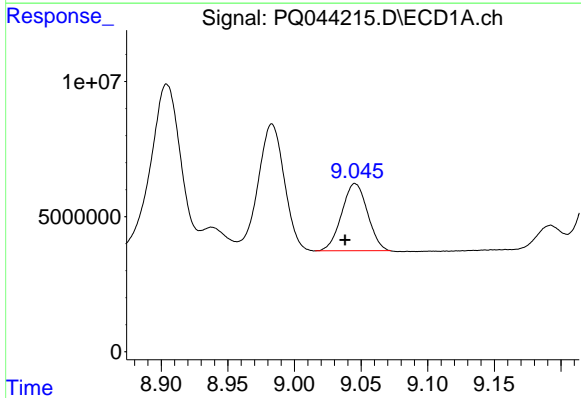
R.T.: 9.584 min
 Delta R.T.: 0.004 min
 Response: 170681846
 Conc: 373.33 ng/ml

Instrument :
 ECD_Q
 ClientSampled :
 AR1660311



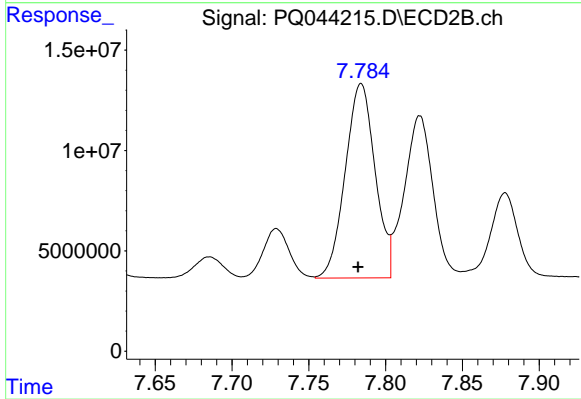
#35 AR-1260-5

R.T.: 8.338 min
 Delta R.T.: -0.003 min
 Response: 240592331
 Conc: 375.38 ng/ml



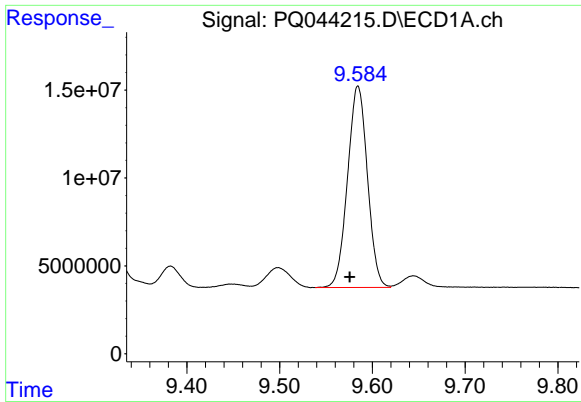
#36 AR-1262-1

R.T.: 9.046 min
 Delta R.T.: 0.007 min
 Response: 33565221
 Conc: 309.05 ng/ml



#36 AR-1262-1

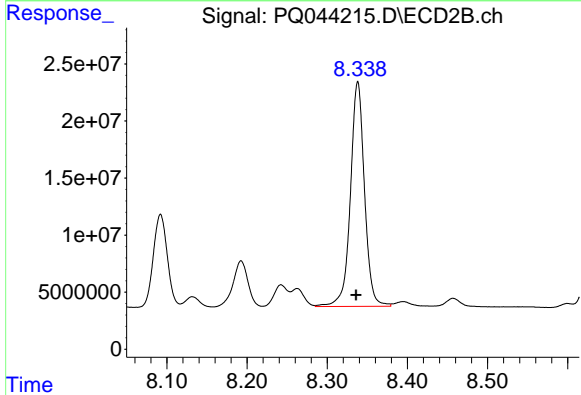
R.T.: 7.784 min
 Delta R.T.: 0.002 min
 Response: 130962508
 Conc: 671.09 ng/ml



#37 AR-1262-2

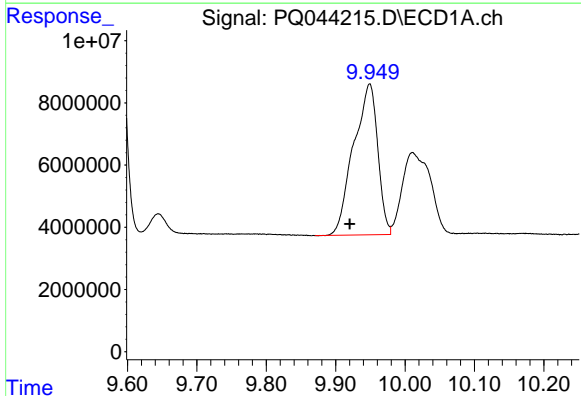
R.T.: 9.584 min
 Delta R.T.: 0.009 min
 Response: 170681846
 Conc: 296.39 ng/ml

Instrument :
 ECD_Q
 ClientSampleId :
 AR1660311



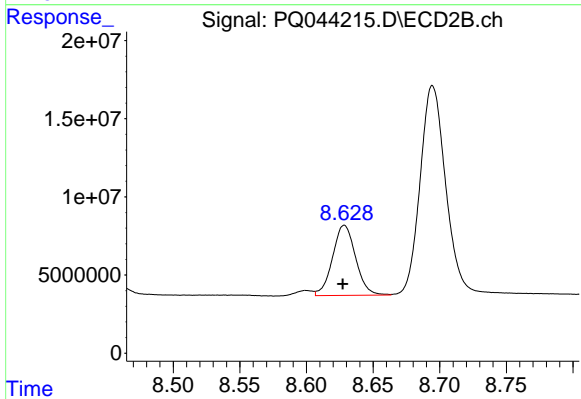
#37 AR-1262-2

R.T.: 8.338 min
 Delta R.T.: 0.002 min
 Response: 240592331
 Conc: 304.09 ng/ml



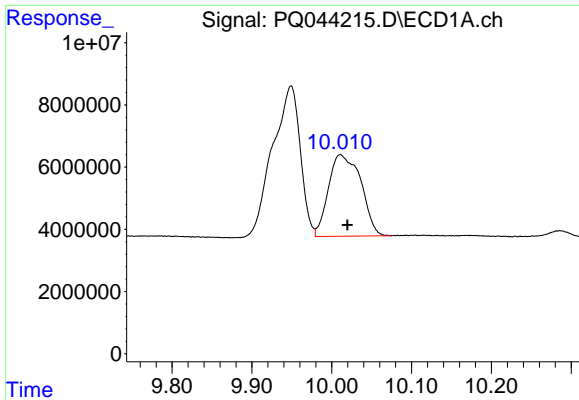
#38 AR-1262-3

R.T.: 9.949 min
 Delta R.T.: 0.029 min
 Response: 117247385
 Conc: 282.62 ng/ml



#38 AR-1262-3

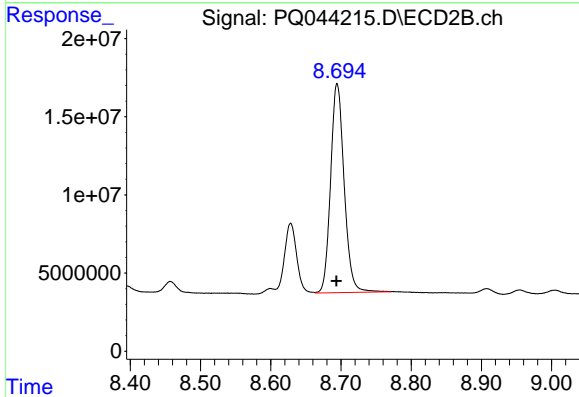
R.T.: 8.628 min
 Delta R.T.: 0.001 min
 Response: 54105327
 Conc: 170.60 ng/ml



#39 AR-1262-4

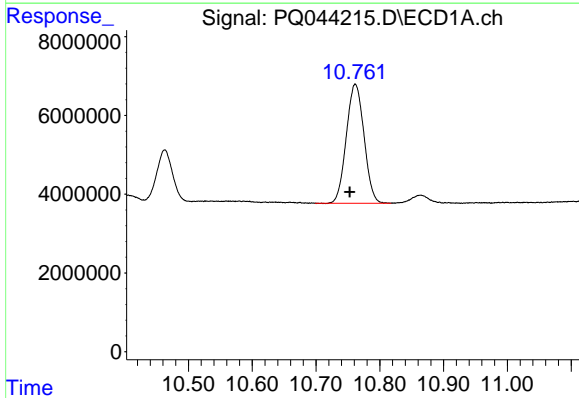
R.T.: 10.011 min
Delta R.T.: -0.009 min
Response: 73962294
Conc: 234.78 ng/ml

Instrument :
ECD_Q
ClientSampleId :
AR1660311



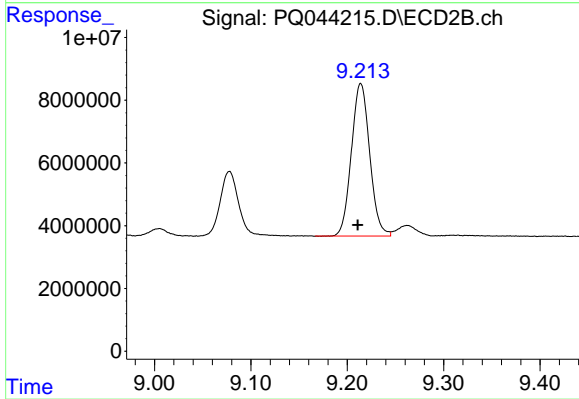
#39 AR-1262-4

R.T.: 8.695 min
Delta R.T.: 0.001 min
Response: 179122778
Conc: 293.91 ng/ml



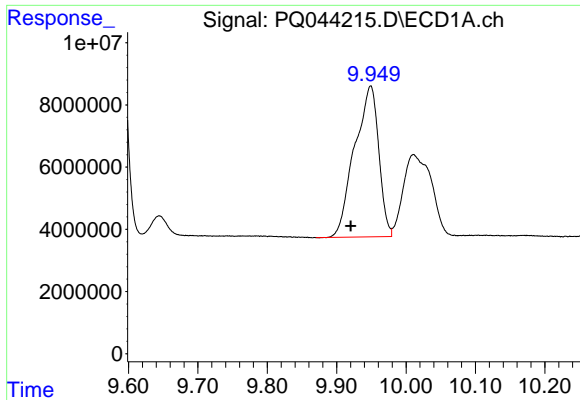
#40 AR-1262-5

R.T.: 10.762 min
Delta R.T.: 0.009 min
Response: 58299367
Conc: 229.35 ng/ml



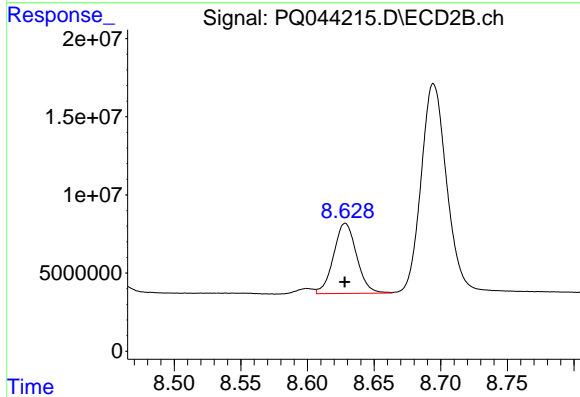
#40 AR-1262-5

R.T.: 9.214 min
Delta R.T.: 0.003 min
Response: 64220779
Conc: 229.04 ng/ml

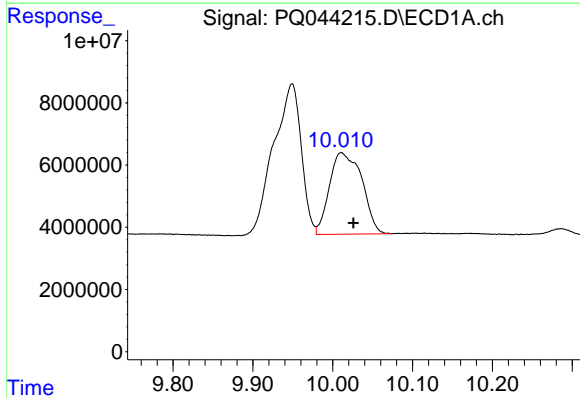


#41 AR-1268-1
 R.T.: 9.949 min
 Delta R.T.: 0.029 min
 Response: 117247385
 Conc: 163.97 ng/ml

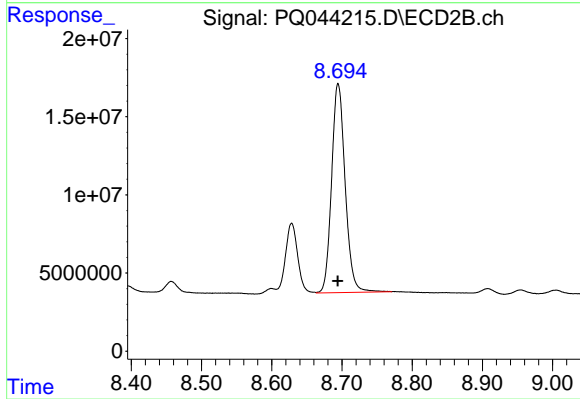
Instrument :
 ECD_Q
 ClientSampled :
 AR1660311



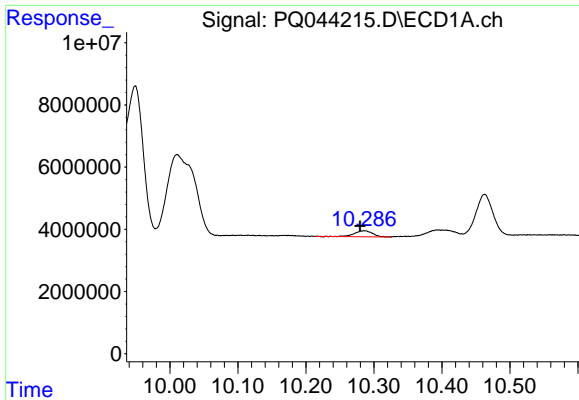
#41 AR-1268-1
 R.T.: 8.628 min
 Delta R.T.: 0.000 min
 Response: 54105327
 Conc: 56.10 ng/ml



#42 AR-1268-2
 R.T.: 10.011 min
 Delta R.T.: -0.015 min
 Response: 73962294
 Conc: 108.84 ng/ml

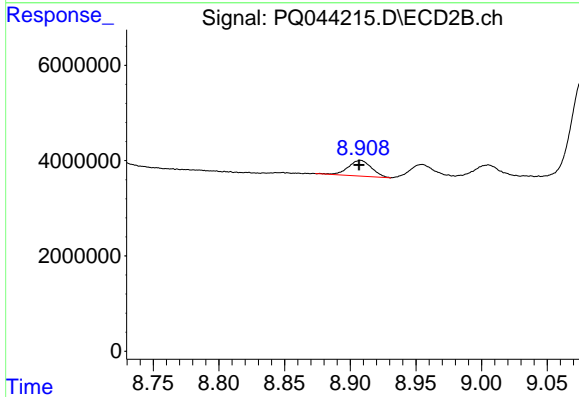


#42 AR-1268-2
 R.T.: 8.695 min
 Delta R.T.: 0.000 min
 Response: 179122778
 Conc: 196.97 ng/ml

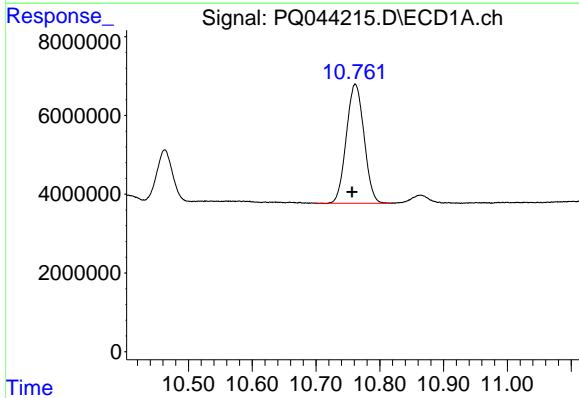


#43 AR-1268-3
 R.T.: 10.286 min
 Delta R.T.: 0.006 min
 Response: 3636175
 Conc: 6.34 ng/ml

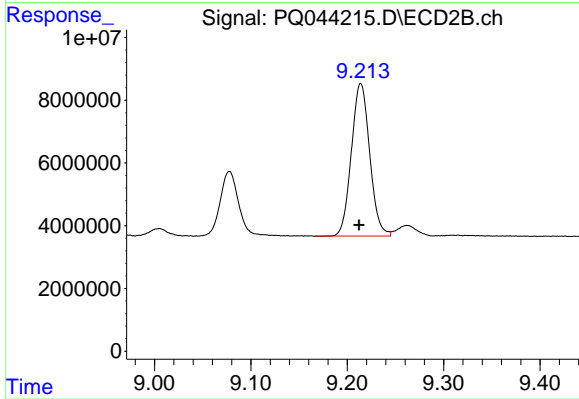
Instrument :
 ECD_Q
 ClientSampleId :
 AR1660311



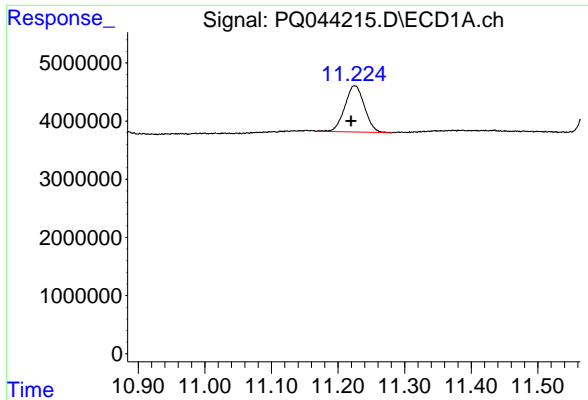
#43 AR-1268-3
 R.T.: 8.908 min
 Delta R.T.: 0.001 min
 Response: 4093854
 Conc: 5.40 ng/ml



#44 AR-1268-4
 R.T.: 10.762 min
 Delta R.T.: 0.005 min
 Response: 58299367
 Conc: 202.35 ng/ml



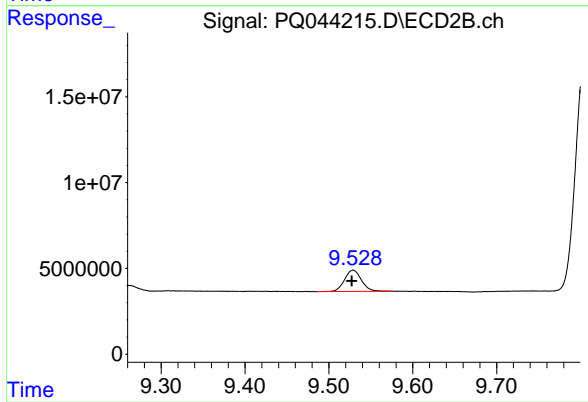
#44 AR-1268-4
 R.T.: 9.214 min
 Delta R.T.: 0.002 min
 Response: 64220779
 Conc: 196.40 ng/ml



#45 AR-1268-5

R.T.: 11.225 min
Delta R.T.: 0.005 min
Response: 16317790
Conc: 7.51 ng/ml

Instrument :
ECD_Q
ClientSampled :
AR1660311



#45 AR-1268-5

R.T.: 9.529 min
Delta R.T.: 0.002 min
Response: 17356336
Conc: 6.66 ng/ml