

Data Path : Z:\pestpcbsrv\HPCHEM1\ECD_Q\Data\PQ101019\
 Data File : PQ044224.D
 Signal(s) : Signal #1: ECD1A.ch Signal #2: ECD2B.ch
 Acq On : 10 Oct 2019 18:10
 Operator : HP\AJ
 Sample : K5296-05 10X
 Misc :
 ALS Vial : 13 Sample Multiplier: 1

Instrument :
 ECD_Q
ClientSampleId :
 C0AY2

Manual Integrations
APPROVED
 Ankita
 10/11/2019 1:44:52 PM

Integration File signal 1: autoint1.e
 Integration File signal 2: autoint2.e
 Quant Time: Oct 11 02:40:58 2019
 Quant Method : Z:\pestpcbsrv\HPCHEM1\ECD_Q\Method\PQ100819CLP.M
 Quant Title : GC EXTRACTABLES
 QLast Update : Thu Oct 10 02:55:10 2019
 Response via : Initial Calibration
 Integrator: ChemStation

Volume Inj. : 1 µl
 Signal #1 Phase : ZB MR1 Signal #2 Phase: ZB MR2
 Signal #1 Info : 30Mx0.32mmx 0.5µm Signal #2 Info : 30M x 0.32mm x 0.25µm

Compound	RT#1	RT#2	Resp#1	Resp#2	ng/ml	ng/ml

System Monitoring Compounds						
1) SA Tetrachlo...	5.318	4.355	25791983	18638790	6.634	4.175 #
2) SA Decachlor...	11.606	9.805	88798265	93077692	16.575m	15.561m
Target Compounds						
26) L6 AR-1254-1	7.559	6.523	5731.1E6	10577.4E6	42592.056	36265.485
27) L6 AR-1254-2	7.790	6.681	9545.6E6	11547.5E6	44683.917	44226.513
28) L6 AR-1254-3	8.176	7.112	12639.5E6	21160.9E6	51370.144	48433.489
29) L6 AR-1254-4	8.472	7.350	10881.1E6	14656.4E6	54253.619	54560.631
30) L6 AR-1254-5	8.907	7.786	14430.5E6	23543.7E6	60291.739	58879.392

(f)=RT Delta > 1/2 Window (#)=Amounts differ by > 25% (m)=manual int.

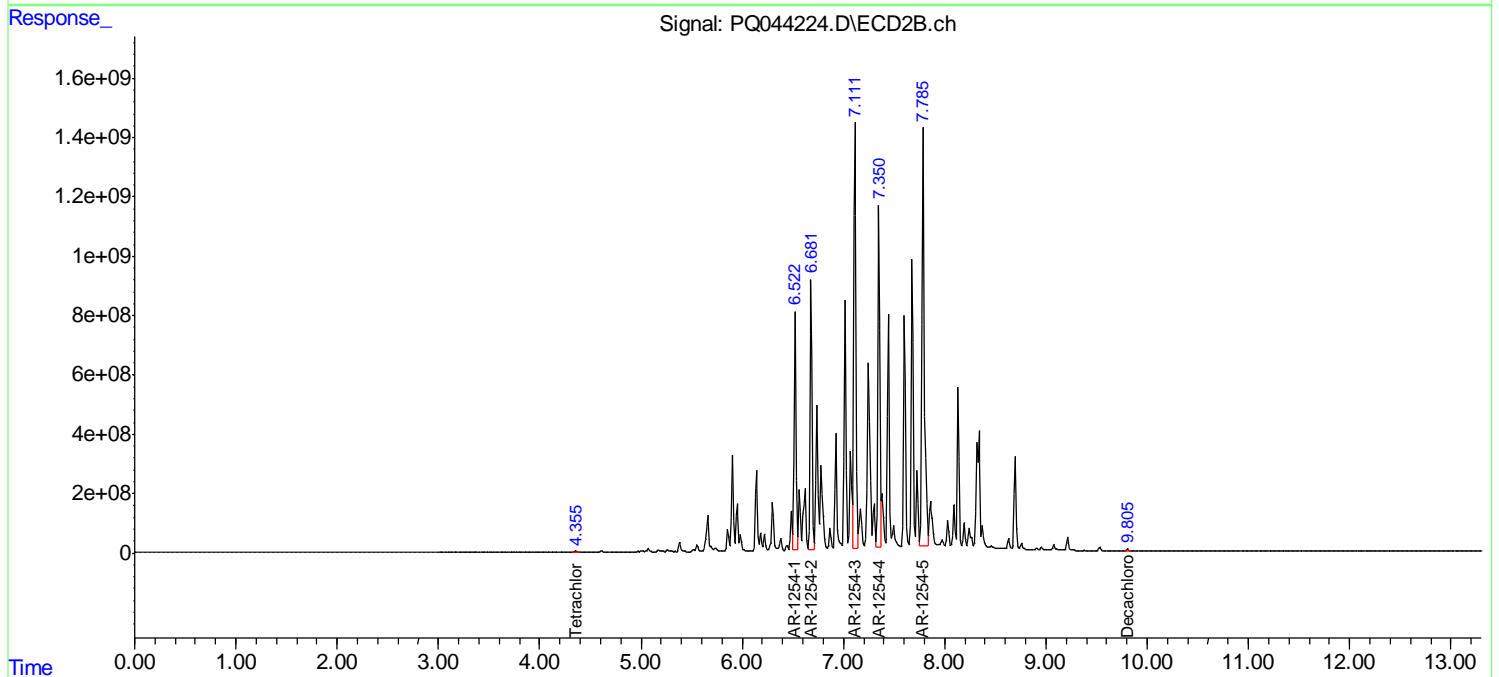
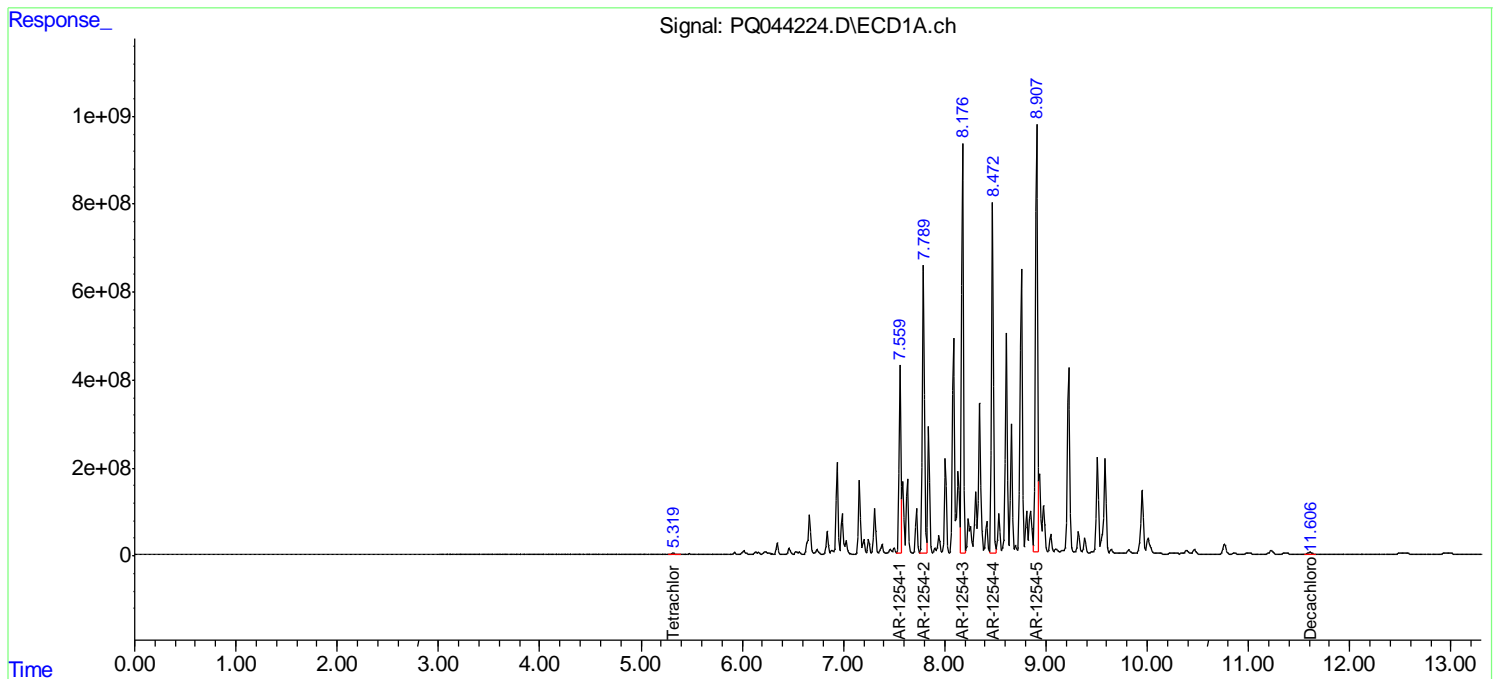
Data Path : Z:\pestpcbsrv\HPCHEM1\ECD_Q\Data\PQ101019\
 Data File : PQ044224.D
 Signal(s) : Signal #1: ECD1A.ch Signal #2: ECD2B.ch
 Acq On : 10 Oct 2019 18:10
 Operator : HP\AJ
 Sample : K5296-05 10X
 Misc :
 ALS Vial : 13 Sample Multiplier: 1

Instrument :
 ECD_Q
 ClientSampled :
 C0AY2

Manual Integrations
APPROVED
 Ankita
 10/11/2019 1:44:52 PM

Integration File signal 1: autoint1.e
 Integration File signal 2: autoint2.e
 Quant Time: Oct 11 02:40:58 2019
 Quant Method : Z:\pestpcbsrv\HPCHEM1\ECD_Q\Method\PQ100819CLP.M
 Quant Title : GC EXTRACTABLES
 QLast Update : Thu Oct 10 02:55:10 2019
 Response via : Initial Calibration
 Integrator: ChemStation

Volume Inj. : 1 µl
 Signal #1 Phase : ZB MR1 Signal #2 Phase: ZB MR2
 Signal #1 Info : 30Mx0.32mmx 0.5µm Signal #2 Info : 30M x 0.32mm x 0.25µm



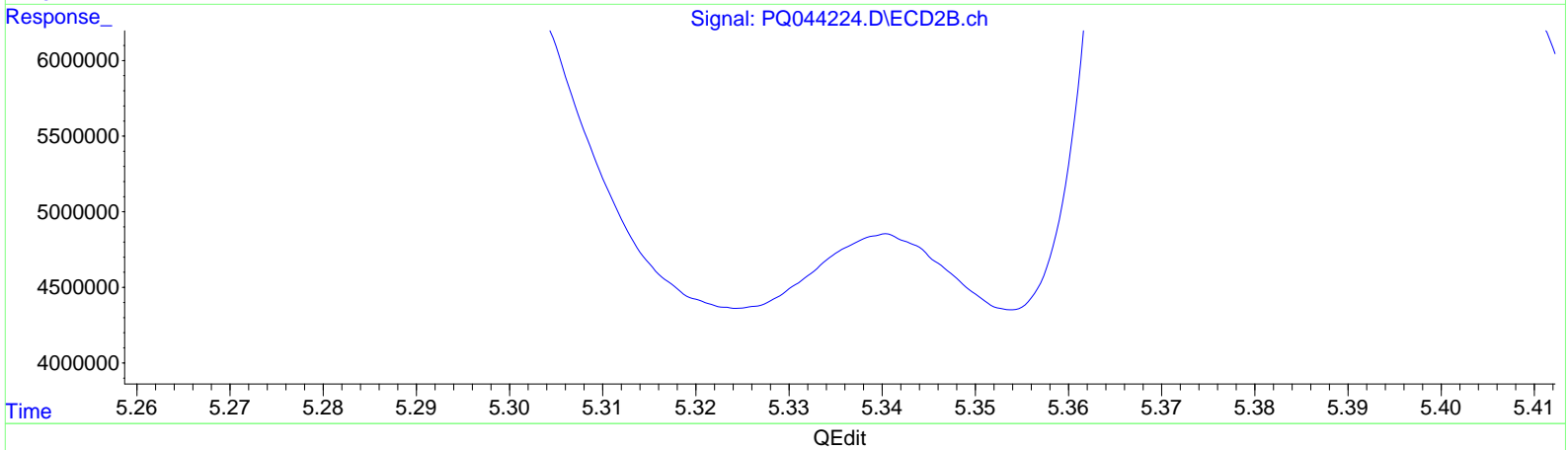
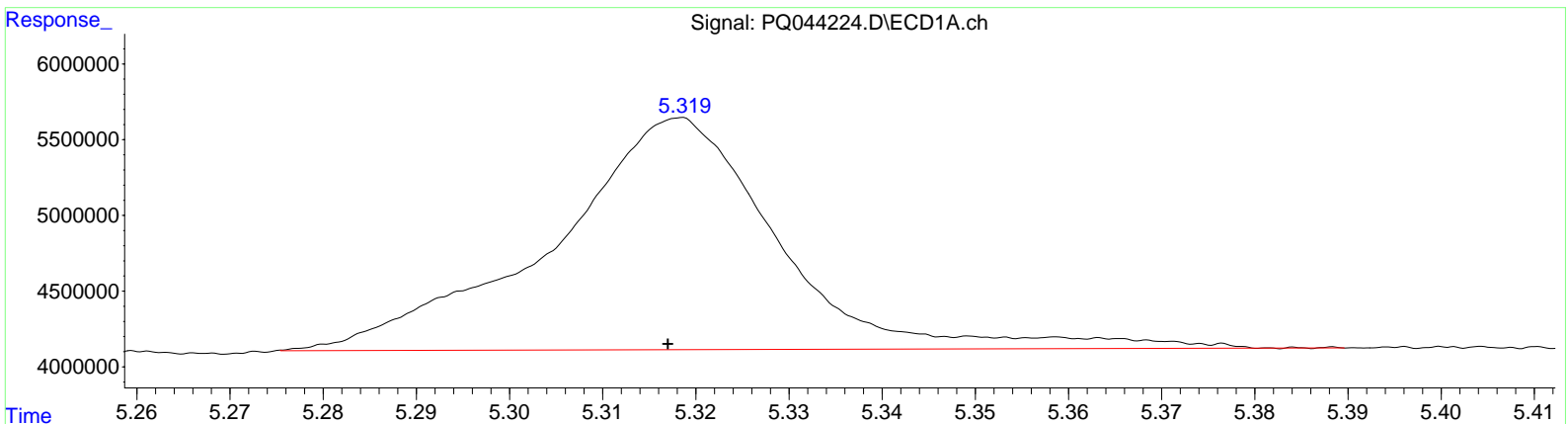
Data Path : Z:\pestpcbsrv\HPCHEM1\ECD_Q\Data\PQ101019\
 Data File : PQ044224.D
 Signal(s) : Signal #1: ECD1A.ch Signal #2: ECD2B.ch
 Acq On : 10 Oct 2019 18:10
 Operator : HP\AJ
 Sample : K5296-05 10X
 Misc :
 ALS Vial : 13 Sample Multiplier: 1

Instrument :
 ECD_Q
ClientSampled :
 C0AY2

Manual Integrations
APPROVED
 Ankita
 10/11/2019 1:44:52 PM

Integration File signal 1: autoint1.e
 Integration File signal 2: autoint2.e
 Quant Time: Oct 11 02:40:58 2019
 Quant Method : Z:\pestpcbsrv\HPCHEM1\ECD_Q\Method\PQ100819CLP.M
 Quant Title : GC EXTRACTABLES
 QLast Update : Thu Oct 10 02:55:10 2019
 Response via : Initial Calibration
 Integrator: ChemStation

Volume Inj. : 1 µl
 Signal #1 Phase : ZB MR1 Signal #2 Phase: ZB MR2
 Signal #1 Info : 30Mx0.32mmx 0.5µm Signal #2 Info : 30M x 0.32mm x 0.25µm



(1) Tetrachloro-m-xylene (SA)
 5.318min 6.634 ng/ml
 response 25791983

(1) Tetrachloro-m-xylene #2 (SA)
 4.355min 4.175 ng/ml
 response 18638790

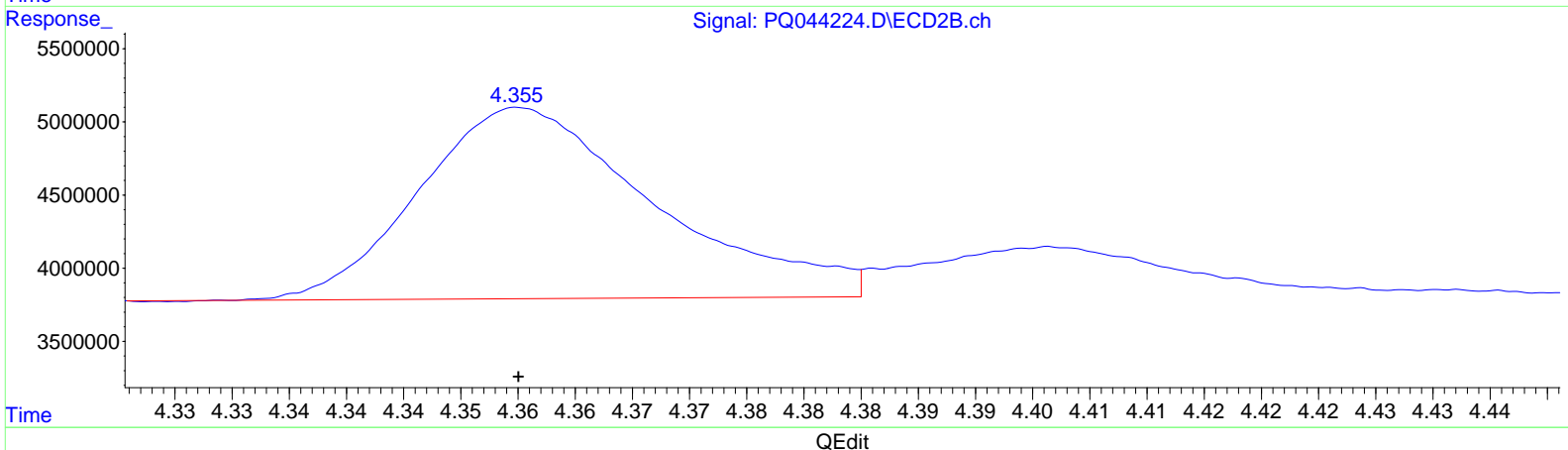
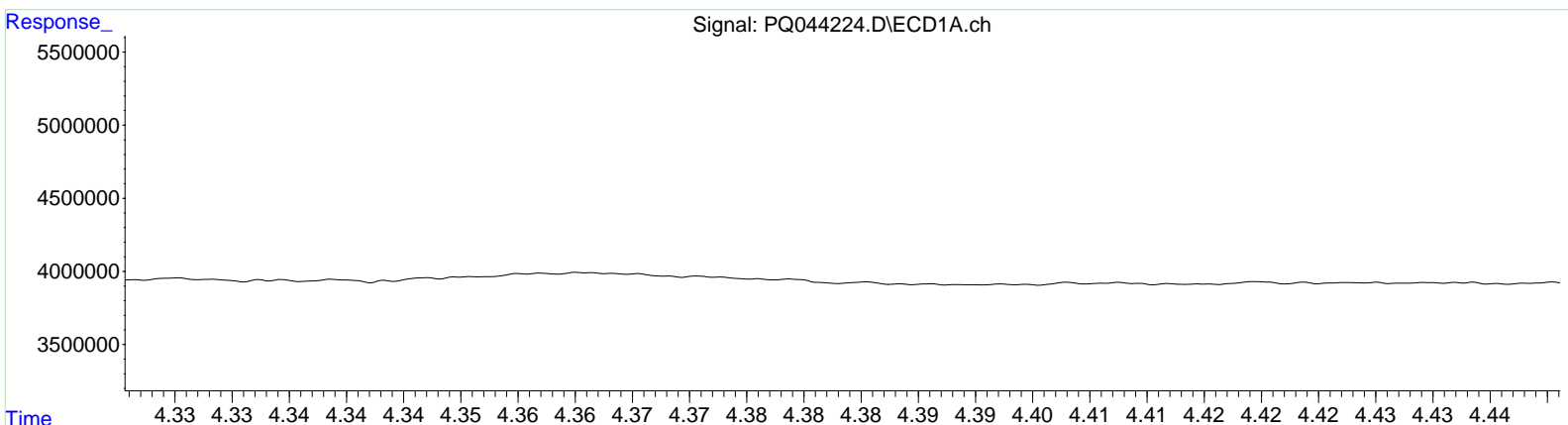
Data Path : Z:\pestpcbsrv\HPCHEM1\ECD_Q\Data\PQ101019\
 Data File : PQ044224.D
 Signal(s) : Signal #1: ECD1A.ch Signal #2: ECD2B.ch
 Acq On : 10 Oct 2019 18:10
 Operator : HP\AJ
 Sample : K5296-05 10X
 Misc :
 ALS Vial : 13 Sample Multiplier: 1

Instrument :
 ECD_Q
ClientSampled :
 C0AY2

Manual Integrations
APPROVED
 Ankita
 10/11/2019 1:44:52 PM

Integration File signal 1: autoint1.e
 Integration File signal 2: autoint2.e
 Quant Time: Oct 11 02:40:58 2019
 Quant Method : Z:\pestpcbsrv\HPCHEM1\ECD_Q\Method\PQ100819CLP.M
 Quant Title : GC EXTRACTABLES
 QLast Update : Thu Oct 10 02:55:10 2019
 Response via : Initial Calibration
 Integrator: ChemStation

Volume Inj. : 1 µl
 Signal #1 Phase : ZB MR1 Signal #2 Phase: ZB MR2
 Signal #1 Info : 30Mx0.32mmx 0.5µm Signal #2 Info : 30M x 0.32mm x 0.25µm



(1) Tetrachloro-m-xylene (SA)
 5.318min 6.634 ng/ml
 response 25791983

(1) Tetrachloro-m-xylene #2 (SA)
 4.355min 4.175 ng/ml
 response 18638790

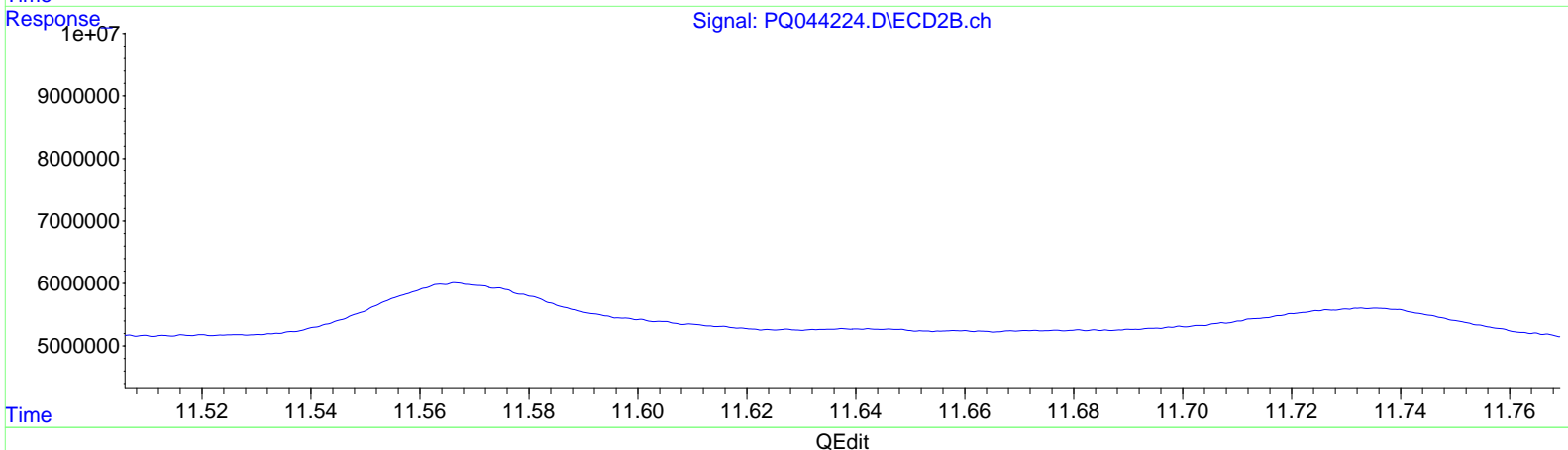
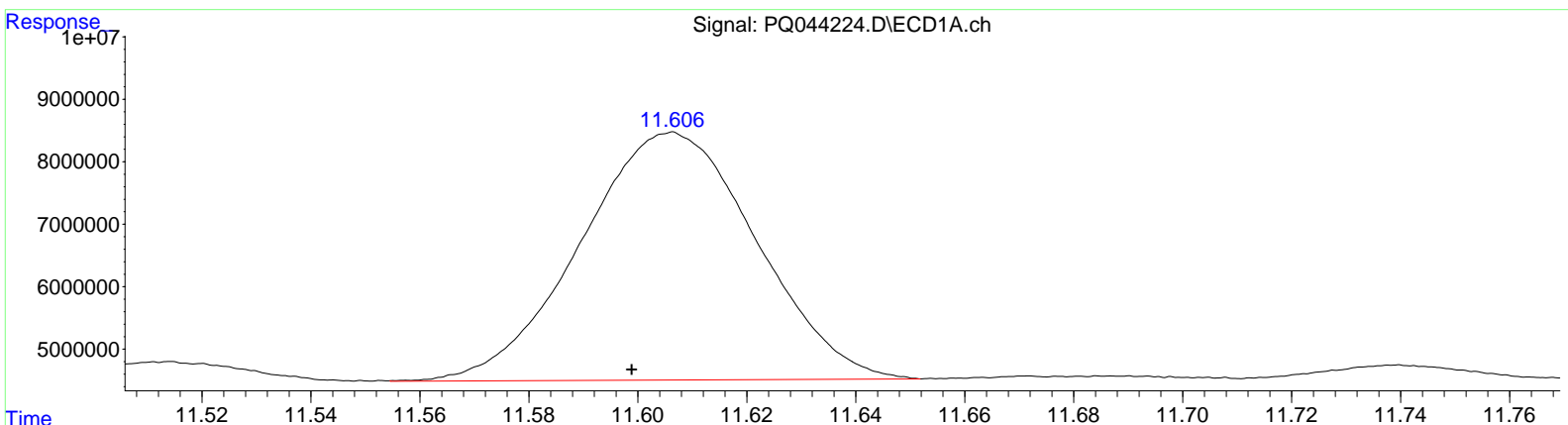
Data Path : Z:\pestpcbsrv\HPCHEM1\ECD_Q\Data\PQ101019\
 Data File : PQ044224.D
 Signal(s) : Signal #1: ECD1A.ch Signal #2: ECD2B.ch
 Acq On : 10 Oct 2019 18:10
 Operator : HP\AJ
 Sample : K5296-05 10X
 Misc :
 ALS Vial : 13 Sample Multiplier: 1

Instrument :
 ECD_Q
ClientSampled :
 C0AY2

Manual Integrations
APPROVED
 Ankita
 10/11/2019 1:44:52 PM

Integration File signal 1: autoint1.e
 Integration File signal 2: autoint2.e
 Quant Time: Oct 11 02:40:58 2019
 Quant Method : Z:\pestpcbsrv\HPCHEM1\ECD_Q\Method\PQ100819CLP.M
 Quant Title : GC EXTRACTABLES
 QLast Update : Thu Oct 10 02:55:10 2019
 Response via : Initial Calibration
 Integrator: ChemStation

Volume Inj. : 1 µl
 Signal #1 Phase : ZB MR1 Signal #2 Phase: ZB MR2
 Signal #1 Info : 30Mx0.32mmx 0.5µm Signal #2 Info : 30M x 0.32mm x 0.25µm



(2) Decachlorobiphenyl (SA)
 11.606min 16.575 ng/ml m
 response 88798265

(2) Decachlorobiphenyl #2 (SA)
 9.805min 15.561 ng/ml m
 response 93077692

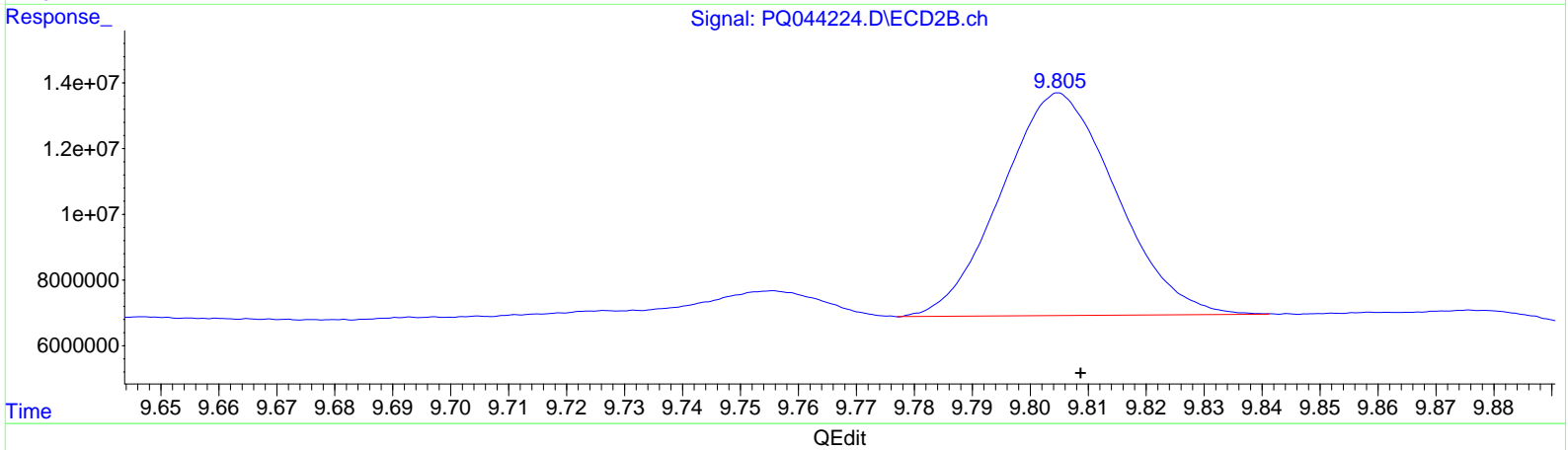
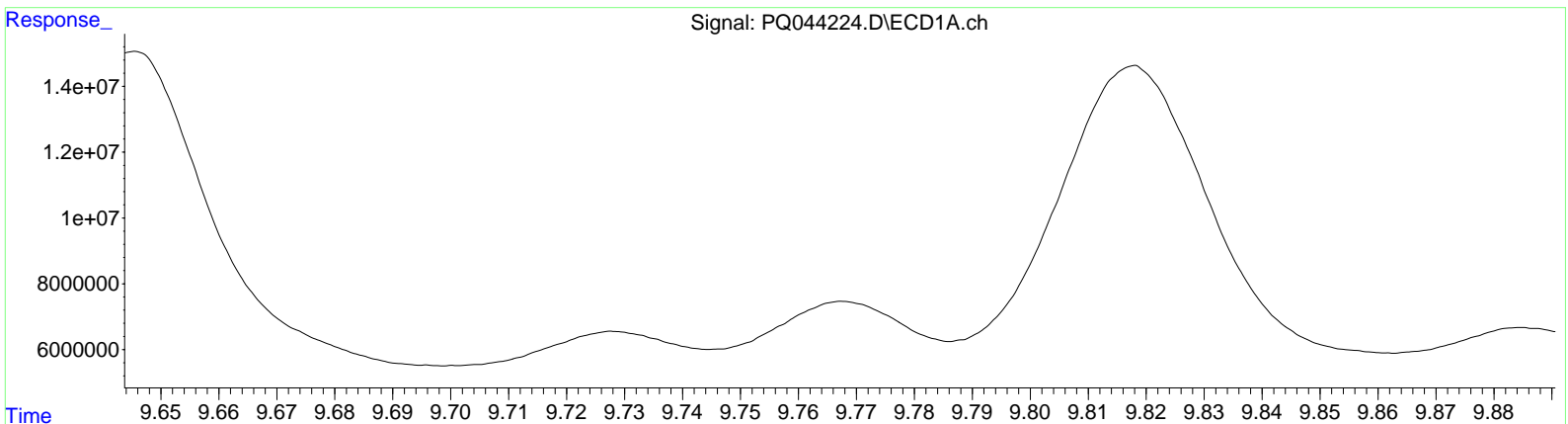
Data Path : Z:\pestpcbsrv\HPCHEM1\ECD_Q\Data\PQ101019\
 Data File : PQ044224.D
 Signal(s) : Signal #1: ECD1A.ch Signal #2: ECD2B.ch
 Acq On : 10 Oct 2019 18:10
 Operator : HP\AJ
 Sample : K5296-05 10X
 Misc :
 ALS Vial : 13 Sample Multiplier: 1

Instrument :
 ECD_Q
ClientSampled :
 C0AY2

Manual Integrations
APPROVED
 Ankita
 10/11/2019 1:44:52 PM

Integration File signal 1: autoint1.e
 Integration File signal 2: autoint2.e
 Quant Time: Oct 11 02:40:58 2019
 Quant Method : Z:\pestpcbsrv\HPCHEM1\ECD_Q\Method\PQ100819CLP.M
 Quant Title : GC EXTRACTABLES
 QLast Update : Thu Oct 10 02:55:10 2019
 Response via : Initial Calibration
 Integrator: ChemStation

Volume Inj. : 1 µl
 Signal #1 Phase : ZB MR1 Signal #2 Phase: ZB MR2
 Signal #1 Info : 30Mx0.32mmx 0.5µm Signal #2 Info : 30M x 0.32mm x 0.25µm



(2) Decachlorobiphenyl (SA)
 11.606min 16.575 ng/ml m
 response 88798265

(2) Decachlorobiphenyl #2 (SA)
 9.805min 15.561 ng/ml m
 response 93077692