

Data Path : Z:\pestpcbsrv\HPCHEM1\ECD_Q\Data\PQ101118\
 Data File : PQ032852.D
 Signal(s) : Signal #1: ECD1A.ch Signal #2: ECD2B.ch
 Acq On : 11 Oct 2018 01:33
 Operator : SM\SJ
 Sample : J5318-01
 Misc :
 ALS Vial : 64 Sample Multiplier: 1

Instrument :
 ECD_Q
 ClientSampleId :
 CON-220-1

Integration File signal 1: autoint1.e
 Integration File signal 2: autoint2.e
 Quant Time: Oct 11 04:46:07 2018
 Quant Method : Z:\pestpcbsrv\HPCHEM1\ECD_Q\Method\PQ091818.M
 Quant Title : GC EXTRACTABLES
 QLast Update : Wed Sep 19 02:07:33 2018
 Response via : Initial Calibration
 Integrator: ChemStation

Volume Inj. : 2 µl
 Signal #1 Phase : ZB-MR1 Signal #2 Phase: ZB-MR2
 Signal #1 Info : 30Mx0.32mmx 0.50µ Signal #2 Info : 30M x 0.32mm x 0.25µm

Compound	RT#1	RT#2	Resp#1	Resp#2	ng/ml	ng/ml

System Monitoring Compounds						
1) SA Tetrachlo...	4.579	3.860	51191656	42091169	22.078	21.017
2) SA Decachlor...	10.420	8.919	29655278	24640906	14.226	12.725

Target Compounds

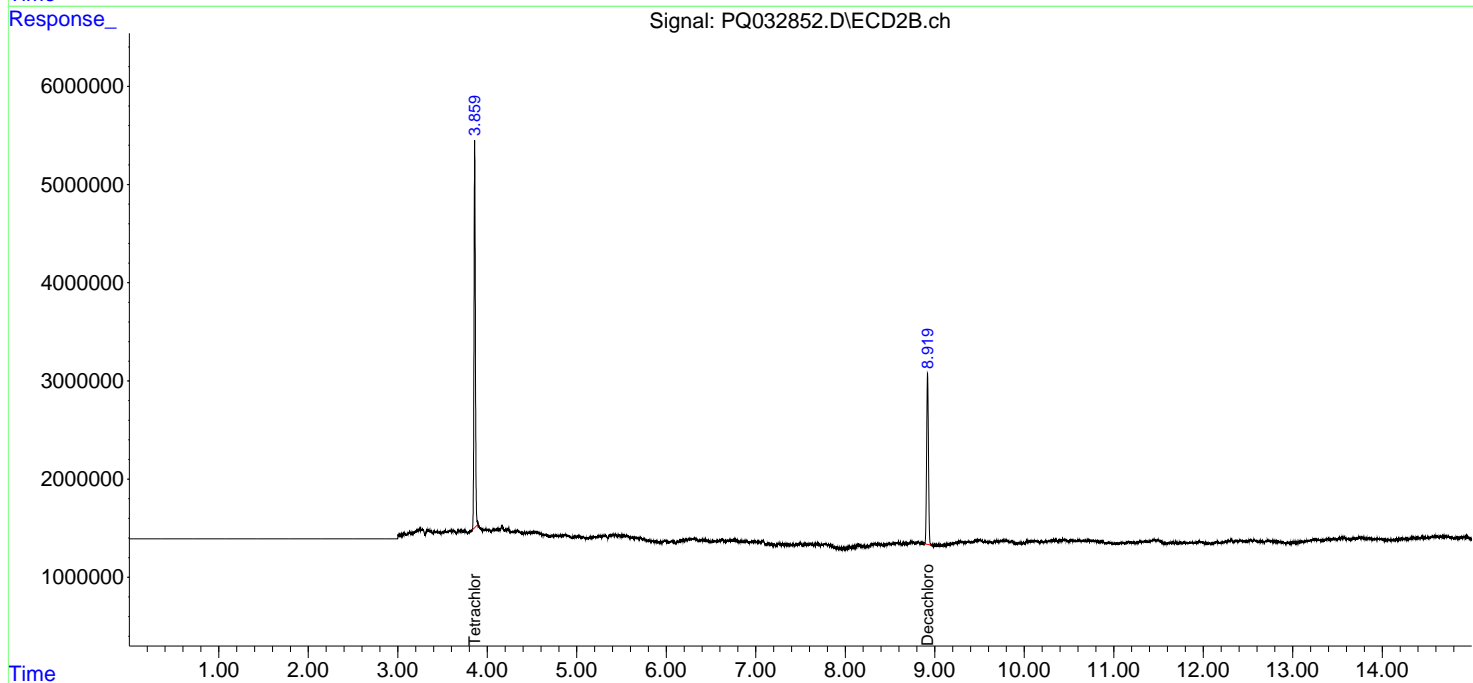
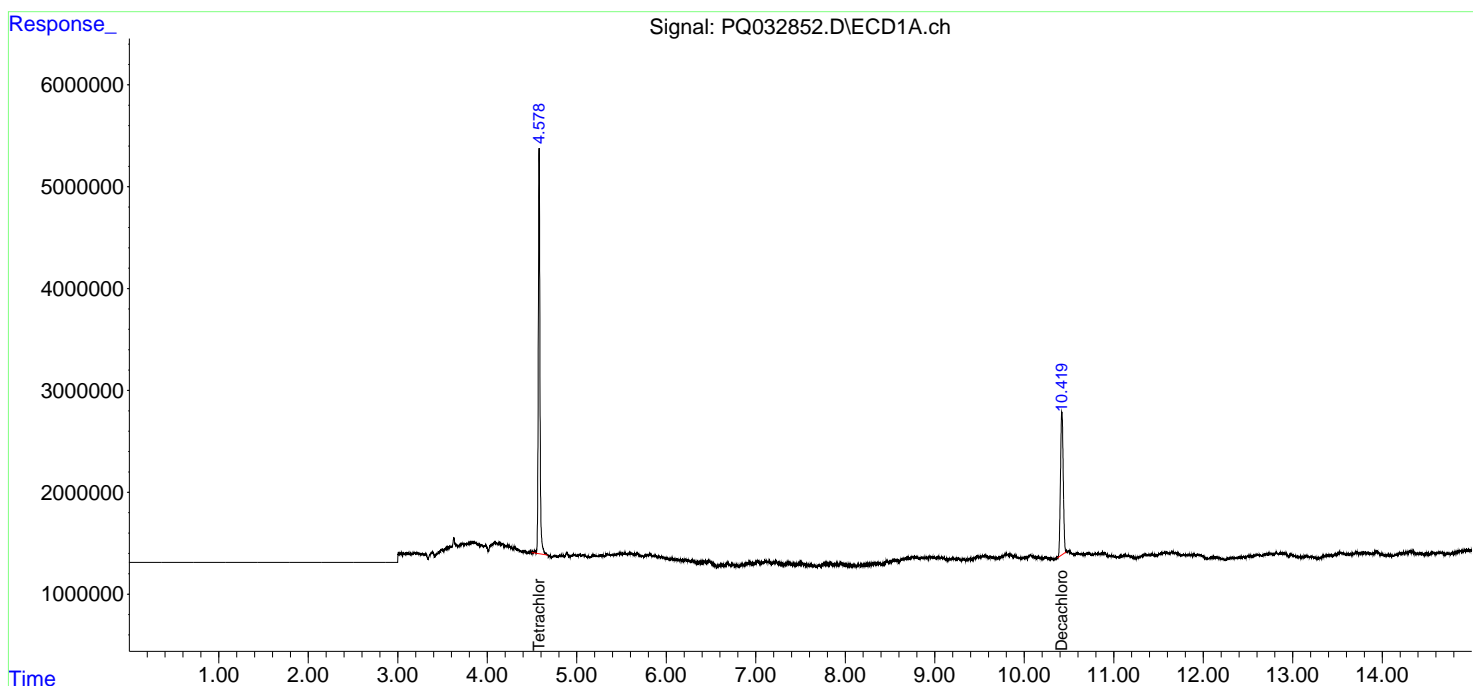
(f)=RT Delta > 1/2 Window (#)=Amounts differ by > 25% (m)=manual int.

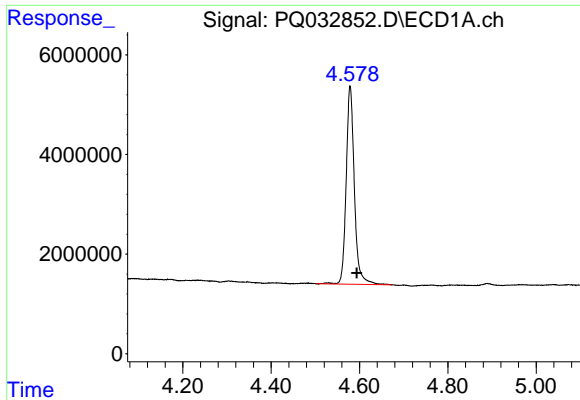
Data Path : Z:\pestpcbsrv\HPCHEM1\ECD_Q\Data\PQ101118\
 Data File : PQ032852.D
 Signal(s) : Signal #1: ECD1A.ch Signal #2: ECD2B.ch
 Acq On : 11 Oct 2018 01:33
 Operator : SM\SJ
 Sample : J5318-01
 Misc :
 ALS Vial : 64 Sample Multiplier: 1

Instrument :
 ECD_Q
 ClientSampled :
 CON-220-1

Integration File signal 1: autoint1.e
 Integration File signal 2: autoint2.e
 Quant Time: Oct 11 04:46:07 2018
 Quant Method : Z:\pestpcbsrv\HPCHEM1\ECD_Q\Method\PQ091818.M
 Quant Title : GC EXTRACTABLES
 QLast Update : Wed Sep 19 02:07:33 2018
 Response via : Initial Calibration
 Integrator: ChemStation

Volume Inj. : 2 µl
 Signal #1 Phase : ZB-MR1 Signal #2 Phase: ZB-MR2
 Signal #1 Info : 30Mx0.32mmx 0.50µ Signal #2 Info : 30M x 0.32mm x 0.25µm

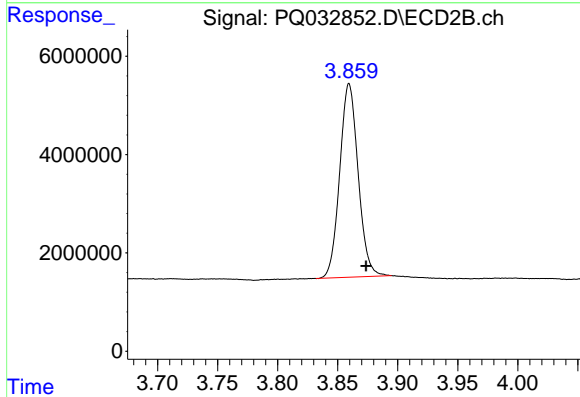




#1 Tetrachloro-m-xylene

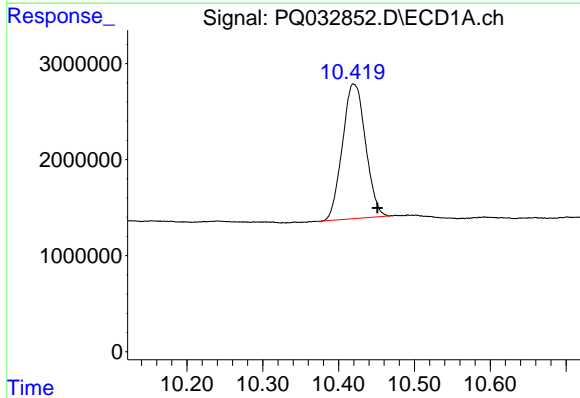
R.T.: 4.579 min
 Delta R.T.: -0.015 min
 Response: 51191656
 Conc: 22.08 ng/ml

Instrument :
 ECD_Q
 ClientSampleId :
 CON-220-1



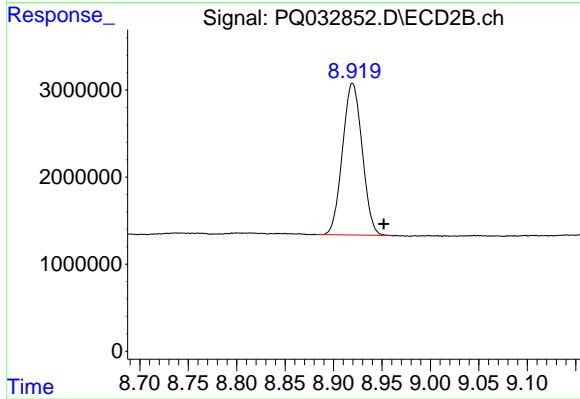
#1 Tetrachloro-m-xylene

R.T.: 3.860 min
 Delta R.T.: -0.014 min
 Response: 42091169
 Conc: 21.02 ng/ml



#2 Decachlorobiphenyl

R.T.: 10.420 min
 Delta R.T.: -0.032 min
 Response: 29655278
 Conc: 14.23 ng/ml



#2 Decachlorobiphenyl

R.T.: 8.919 min
 Delta R.T.: -0.032 min
 Response: 24640906
 Conc: 12.73 ng/ml