

Data Path : Z:\pestpcbsrv\HPCHEM1\ECD_Q\Data\PQ101618\
 Data File : PQ033256.D
 Signal(s) : Signal #1: ECD1A.ch Signal #2: ECD2B.ch
 Acq On : 17 Oct 2018 05:58
 Operator : SM\SJ
 Sample : J5257-07
 Misc :
 ALS Vial : 45 Sample Multiplier: 1

Instrument :
 ECD_Q
 ClientSampled :

Integration File signal 1: autoint1.e
 Integration File signal 2: autoint2.e
 Quant Time: Oct 17 07:17:43 2018
 Quant Method : Z:\pestpcbsrv\HPCHEM1\ECD_Q\Method\PQ100918CLP.M
 Quant Title : GC EXTRACTABLES
 QLast Update : Wed Oct 10 08:14:42 2018
 Response via : Initial Calibration
 Integrator: ChemStation

Volume Inj. : 1 µl
 Signal #1 Phase : ZB MR1 Signal #2 Phase: ZB MR2
 Signal #1 Info : 30Mx0.32mmx 0.5µm Signal #2 Info : 30M x 0.32mm x 0.25µm

Compound	RT#1	RT#2	Resp#1	Resp#2	ng/ml	ng/ml
System Monitoring Compounds						
1) SA Tetrachlo...	4.570	3.849	49373121	37448084	24.067	24.077
2) SA Decachlor...	10.402	8.899	84238848	67341672	44.564	41.891
Target Compounds						
3) L1 AR-1016-1	5.769	4.961	4890661	2588657	70.238	45.218 #
4) L1 AR-1016-2	5.769	4.961	4890661	2588657	47.478	32.487 #
5) L1 AR-1016-3	0.000	5.138	0	1993616	N.D.	48.062 #
6) L1 AR-1016-4	5.934	5.177	2284365	5108389	45.198	149.090 #
7) L1 AR-1016-5	6.225	5.393	3888264	2400388	75.455	52.535 #
8) L2 AR-1221-1	0.000	4.099	0	94420	N.D.	5.109 #
9) L2 AR-1221-2	0.000	4.153	0	234187	N.D.	17.705 #
10) L2 AR-1221-3	0.000	4.235	0	23060	N.D.	0.504 #
11) L3 AR-1232-1	0.000	4.235	0	23060	N.D.	0.666 #
12) L3 AR-1232-2	0.000	4.961	0	2588657	N.D.	68.843 #
13) L3 AR-1232-3	5.769	5.138	4890661	1993616	102.295	101.789
14) L3 AR-1232-4	5.934	5.223	2284365	2003597	95.905	116.738
15) L3 AR-1232-5	6.020	5.393	4144182	2400388	232.373	123.096 #
16) L4 AR-1242-1	5.769	4.961	4890661	2588657	81.953	53.201 #
17) L4 AR-1242-2	5.769	4.961	4890661	2588657	56.313	38.351 #
18) L4 AR-1242-3	0.000	5.138	0	1993616	N.D.	54.425 #
19) L4 AR-1242-4	5.934	5.223	2284365	2003597	52.972	54.397
20) L4 AR-1242-5	6.668	5.746	10056260	13517390	203.992	281.380 #
21) L5 AR-1248-1	5.769	4.961	4890661	2588657	98.597	63.169 #
22) L5 AR-1248-2	6.020	5.177	4144182	5108389	56.343	92.982 #
23) L5 AR-1248-3	6.225	5.223	3888264	2003597	47.578	35.777
24) L5 AR-1248-4	6.630	5.393	7206776	2400388	76.937	34.804 #
25) L5 AR-1248-5	6.668	5.787	10056260	5249621	113.235	75.941 #
26) L6 AR-1254-1	6.602	5.746	13083417	13517390	132.020	119.983
27) L6 AR-1254-2	6.821	5.891	20205187	9736137	129.289	98.599
28) L6 AR-1254-3	7.190	6.298	16654459	22474898	98.150	135.236 #
29) L6 AR-1254-4	7.474	6.550	15508590	2470420	125.602	23.219 #
30) L6 AR-1254-5	7.894	6.972	25857316	5678772	195.328	38.661 #
31) L7 AR-1260-1	7.352	6.427	13194316	11957945	123.361	127.315
32) L7 AR-1260-2	7.607	6.613	15615038	14410670	123.659	123.686
33) L7 AR-1260-3	7.965	6.768	7327088	12154655	94.068	112.707
34) L7 AR-1260-4	8.193	7.239	16111034	4809351	159.157	62.565 #
35) L7 AR-1260-5	8.528	7.511	9951088	1708849	52.699	8.895 #
36) L8 AR-1262-1	7.965	6.972	7327088	5678772	54.360	44.188
37) L8 AR-1262-2	8.528	7.511	9951088	1708849	40.243	7.134 #
38) L8 AR-1262-3	8.869	7.762	7971513	5796549	48.193	62.229 #
39) L8 AR-1262-4	0.000	7.826	0	11004138	N.D.	63.208 #
40) L8 AR-1262-5	9.625	8.329	2827722	1758826	32.320	21.796 #
41) L9 AR-1268-1	8.869	7.762	7971513	5796549	21.737	16.954

Data Path : Z:\pestpcbsrv\HPCHEM1\ECD_Q\Data\PQ101618\
 Data File : PQ033256.D
 Signal(s) : Signal #1: ECD1A.ch Signal #2: ECD2B.ch
 Acq On : 17 Oct 2018 05:58
 Operator : SM\SJ
 Sample : J5257-07
 Misc :
 ALS Vial : 45 Sample Multiplier: 1

Instrument :
 ECD_Q
 ClientSampleId :

Integration File signal 1: autoint1.e
 Integration File signal 2: autoint2.e
 Quant Time: Oct 17 07:17:43 2018
 Quant Method : Z:\pestpcbsrv\HPCHEM1\ECD_Q\Method\PQ100918CLP.M
 Quant Title : GC EXTRACTABLES
 QLast Update : Wed Oct 10 08:14:42 2018
 Response via : Initial Calibration
 Integrator: ChemStation

Volume Inj. : 1 µl
 Signal #1 Phase : ZB MR1 Signal #2 Phase: ZB MR2
 Signal #1 Info : 30Mx0.32mmx 0.5µm Signal #2 Info : 30M x 0.32mm x 0.25µm

	Compound	RT#1	RT#2	Resp#1	Resp#2	ng/ml	ng/ml
42)	L9 AR-1268-2	0.000	7.826	0	11004138	N.D.	35.610 #
43)	L9 AR-1268-3	9.181	8.031	2274822	3528107	8.072	13.791 #
44)	L9 AR-1268-4	9.625	8.329	2827722	1758826	23.405	15.945 #
45)	L9 AR-1268-5	10.054	8.634	4647756	5420366	5.027	6.480 #

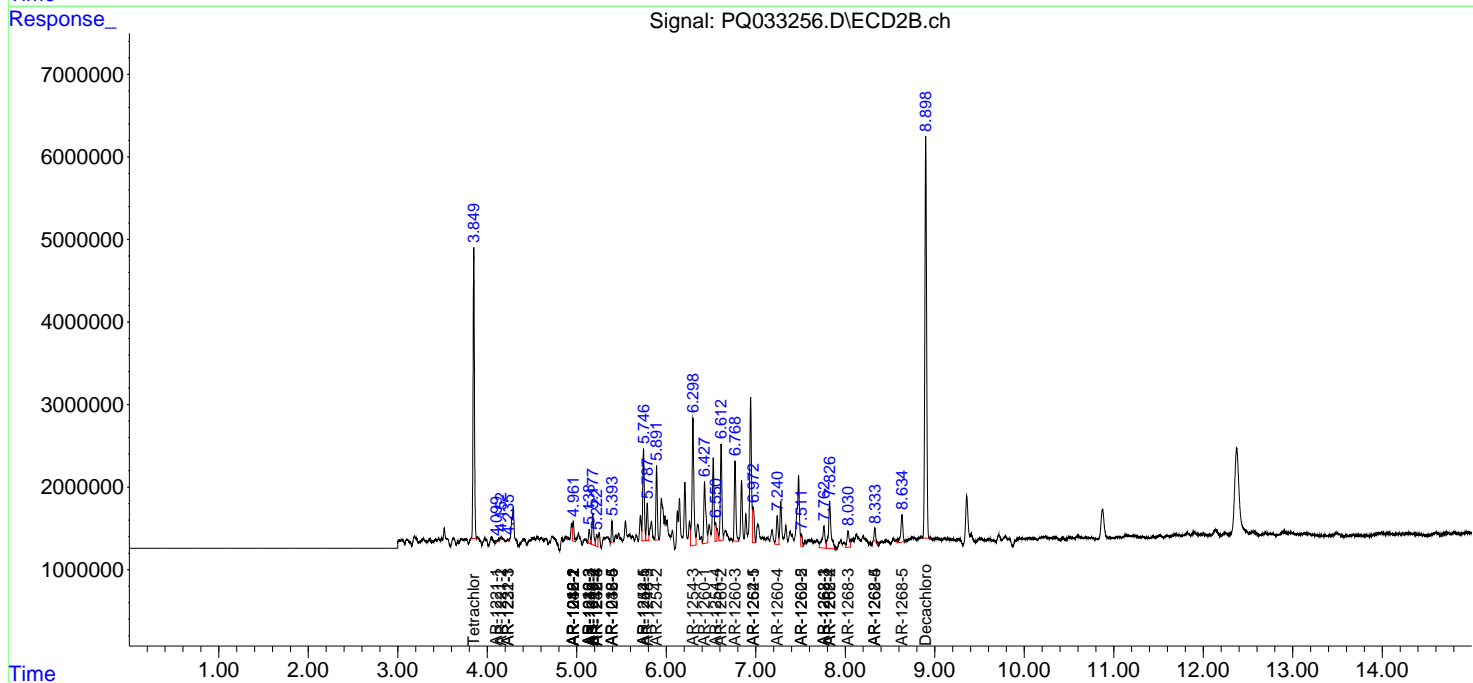
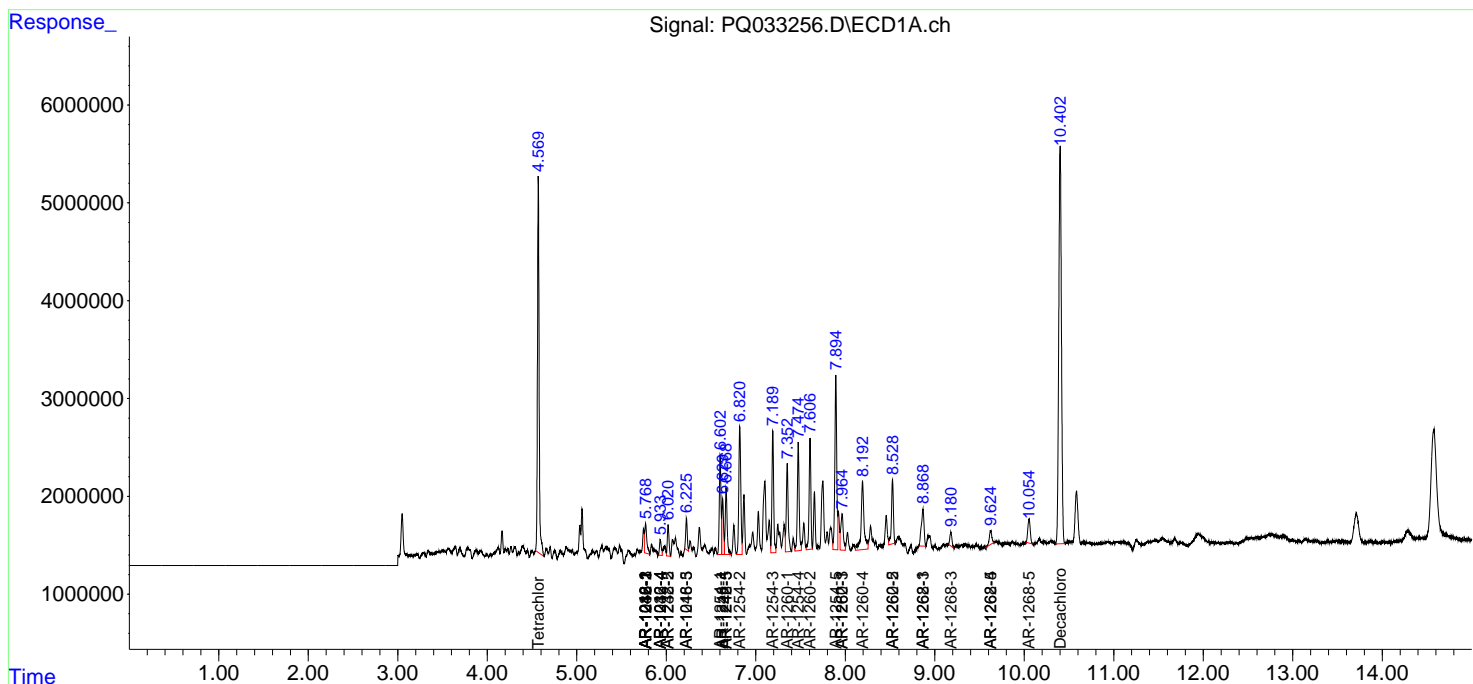
(f)=RT Delta > 1/2 Window (#)=Amounts differ by > 25% (m)=manual int.

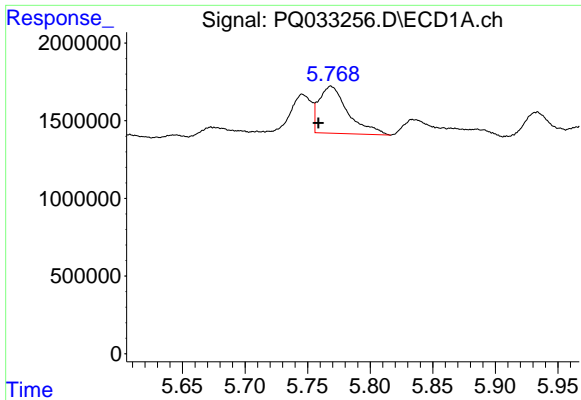
Data Path : Z:\pestpcbsrv\HPCHEM1\ECD_Q\Data\PQ101618\
 Data File : PQ033256.D
 Signal(s) : Signal #1: ECD1A.ch Signal #2: ECD2B.ch
 Acq On : 17 Oct 2018 05:58
 Operator : SM\SJ
 Sample : J5257-07
 Misc :
 ALS Vial : 45 Sample Multiplier: 1

Instrument :
 ECD_Q
 ClientSampled :

Integration File signal 1: autoint1.e
 Integration File signal 2: autoint2.e
 Quant Time: Oct 17 07:17:43 2018
 Quant Method : Z:\pestpcbsrv\HPCHEM1\ECD_Q\Method\PQ100918CLP.M
 Quant Title : GC EXTRACTABLES
 QLast Update : Wed Oct 10 08:14:42 2018
 Response via : Initial Calibration
 Integrator: ChemStation

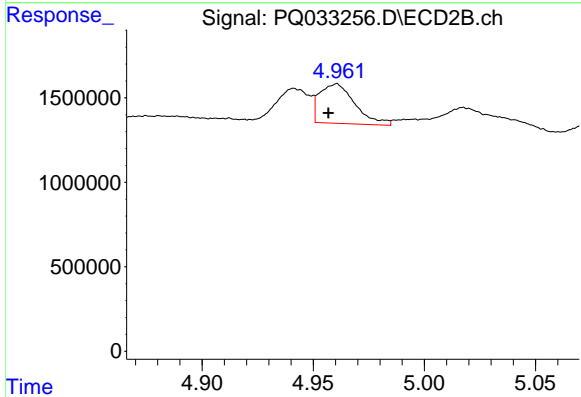
Volume Inj. : 1 µl
 Signal #1 Phase : ZB MR1 Signal #2 Phase: ZB MR2
 Signal #1 Info : 30Mx0.32mmx 0.5µm Signal #2 Info : 30M x 0.32mm x 0.25µm



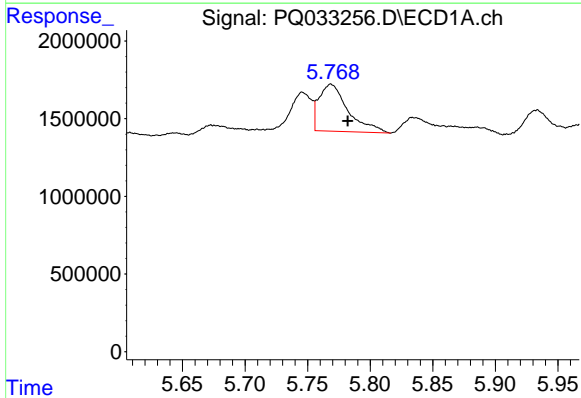


#3 AR-1016-1
 R.T.: 5.769 min
 Delta R.T.: 0.010 min
 Response: 4890661
 Conc: 70.24 ng/ml

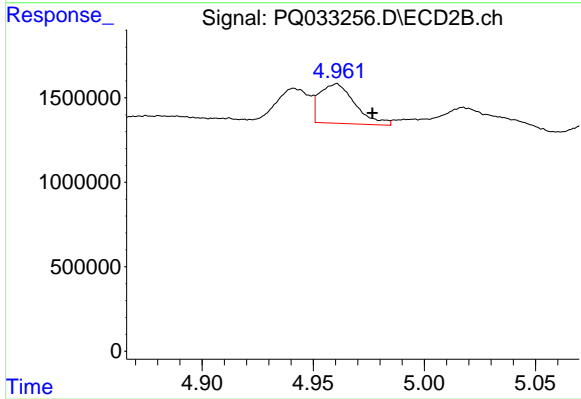
Instrument :
 ECD_Q
 ClientSampleId :



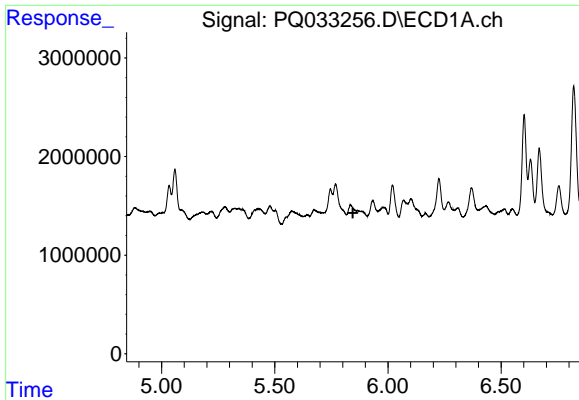
#3 AR-1016-1
 R.T.: 4.961 min
 Delta R.T.: 0.004 min
 Response: 2588657
 Conc: 45.22 ng/ml



#4 AR-1016-2
 R.T.: 5.769 min
 Delta R.T.: -0.013 min
 Response: 4890661
 Conc: 47.48 ng/ml

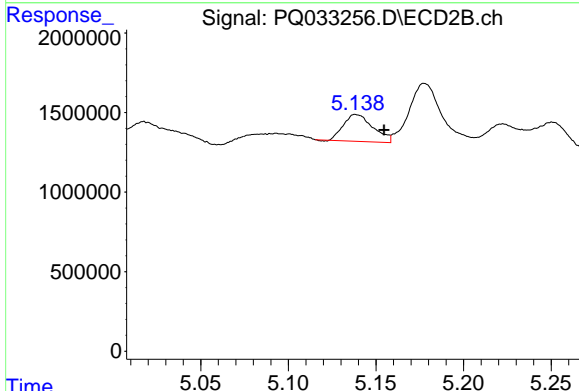


#4 AR-1016-2
 R.T.: 4.961 min
 Delta R.T.: -0.016 min
 Response: 2588657
 Conc: 32.49 ng/ml

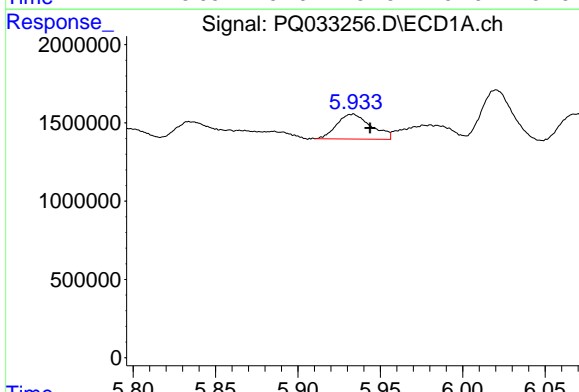


#5 AR-1016-3
 R.T.: 0.000 min
 Exp R.T.: 5.845 min
 Response: 0
 Conc: N.D.

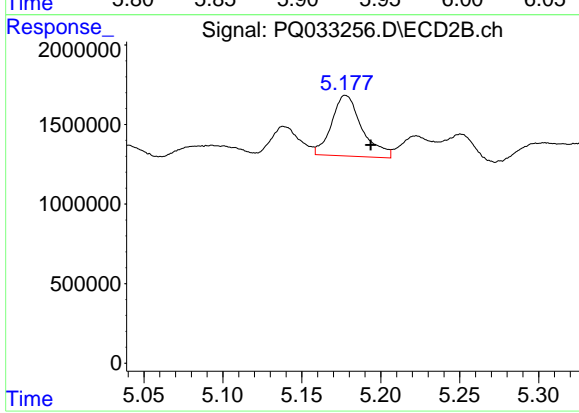
Instrument :
 ECD_Q
 ClientSampled :



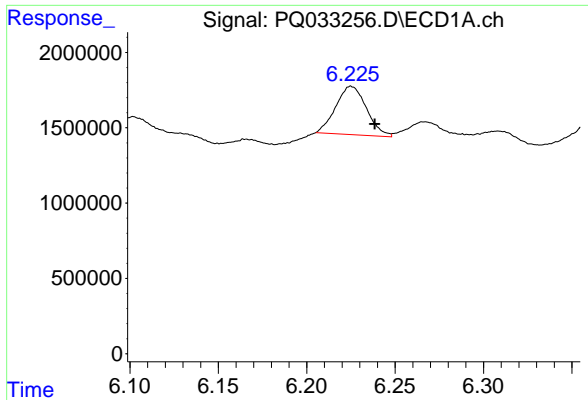
#5 AR-1016-3
 R.T.: 5.138 min
 Delta R.T.: -0.016 min
 Response: 1993616
 Conc: 48.06 ng/ml



#6 AR-1016-4
 R.T.: 5.934 min
 Delta R.T.: -0.010 min
 Response: 2284365
 Conc: 45.20 ng/ml



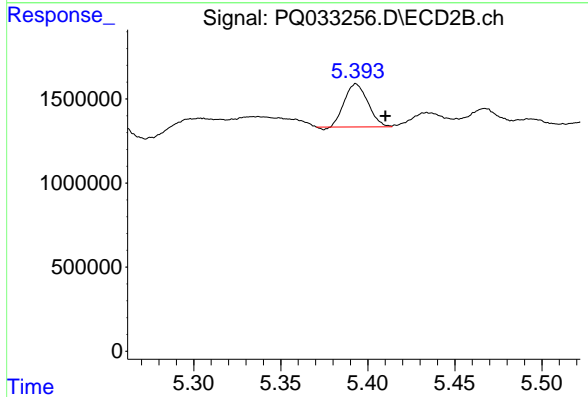
#6 AR-1016-4
 R.T.: 5.177 min
 Delta R.T.: -0.016 min
 Response: 5108389
 Conc: 149.09 ng/ml



#7 AR-1016-5

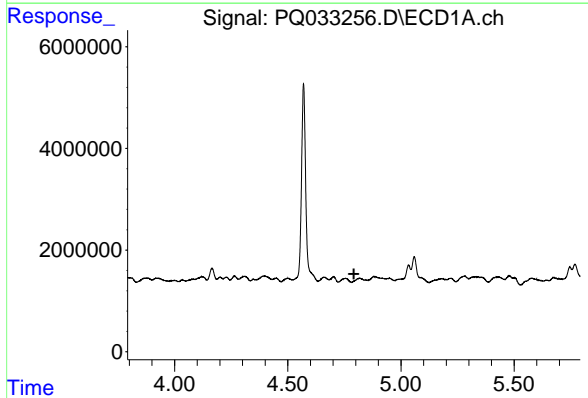
R.T.: 6.225 min
 Delta R.T.: -0.013 min
 Response: 3888264
 Conc: 75.45 ng/ml

Instrument :
 ECD_Q
 ClientSampled :



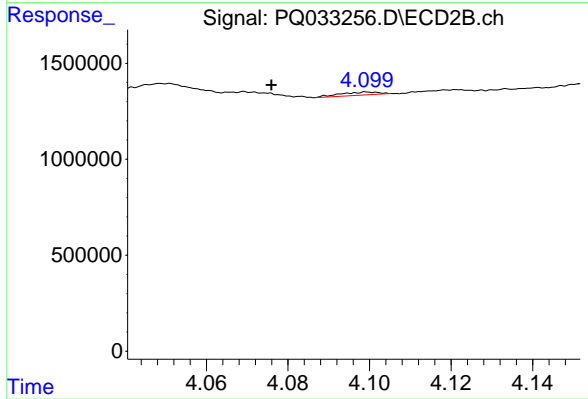
#7 AR-1016-5

R.T.: 5.393 min
 Delta R.T.: -0.017 min
 Response: 2400388
 Conc: 52.54 ng/ml



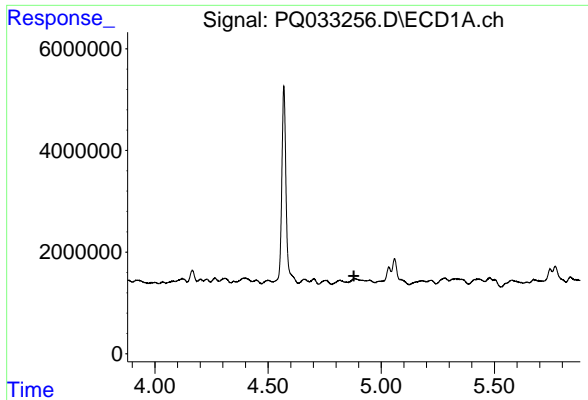
#8 AR-1221-1

R.T.: 0.000 min
 Exp R.T. : 4.792 min
 Response: 0
 Conc: N.D.



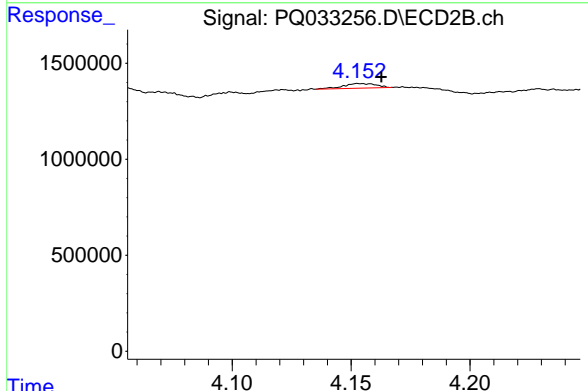
#8 AR-1221-1

R.T.: 4.099 min
 Delta R.T.: 0.023 min
 Response: 94420
 Conc: 5.11 ng/ml

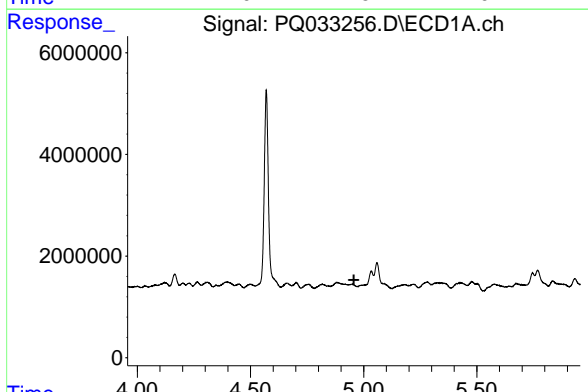


#9 AR-1221-2
 R.T.: 0.000 min
 Exp R.T. : 4.879 min
 Response: 0
 Conc: N.D.

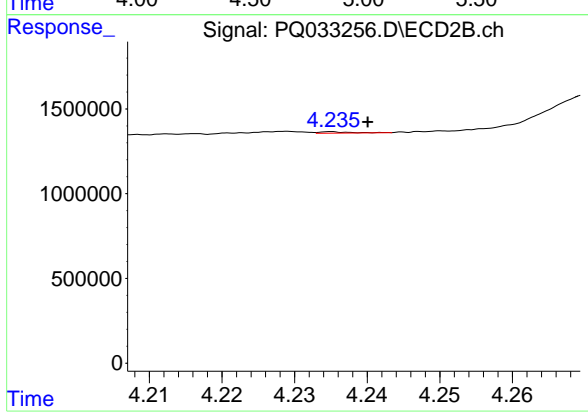
Instrument :
 ECD_Q
 ClientSampled :



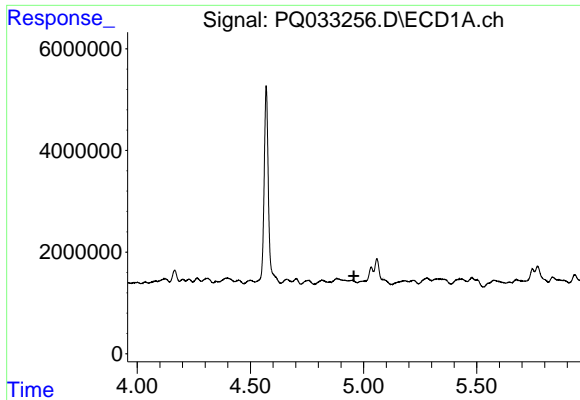
#9 AR-1221-2
 R.T.: 4.153 min
 Delta R.T.: -0.010 min
 Response: 234187
 Conc: 17.71 ng/ml



#10 AR-1221-3
 R.T.: 0.000 min
 Exp R.T. : 4.957 min
 Response: 0
 Conc: N.D.



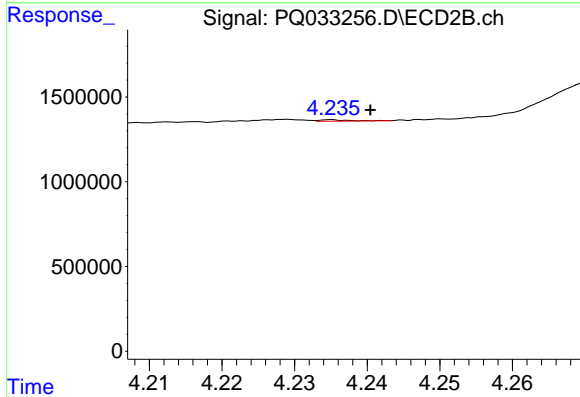
#10 AR-1221-3
 R.T.: 4.235 min
 Delta R.T.: -0.005 min
 Response: 23060
 Conc: 0.50 ng/ml



#11 AR-1232-1

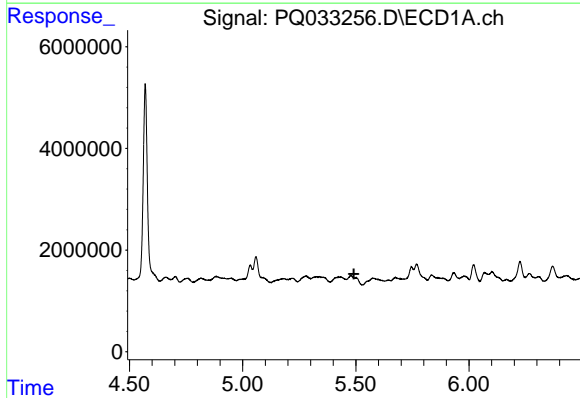
R.T.: 0.000 min
 Exp R.T. : 4.957 min
 Response: 0
 Conc: N.D.

Instrument :
 ECD_Q
 ClientSampleId :



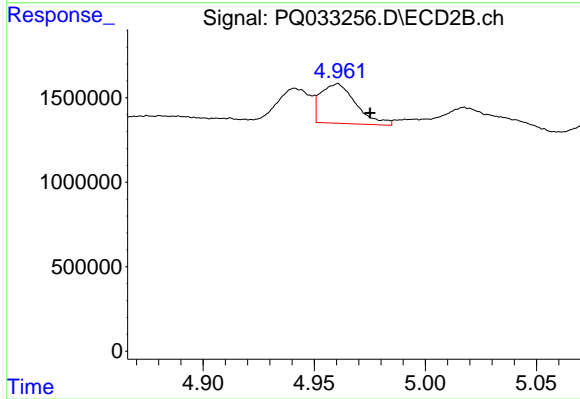
#11 AR-1232-1

R.T.: 4.235 min
 Delta R.T.: -0.005 min
 Response: 23060
 Conc: 0.67 ng/ml



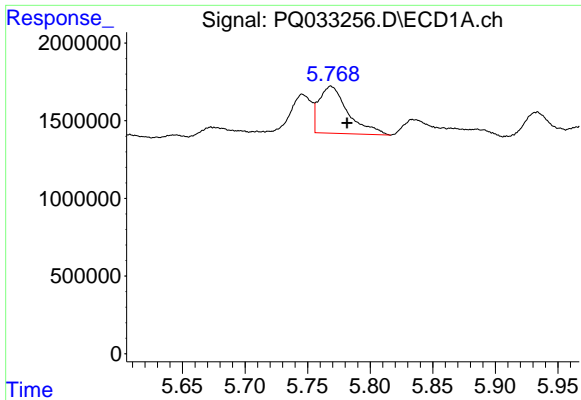
#12 AR-1232-2

R.T.: 0.000 min
 Exp R.T. : 5.491 min
 Response: 0
 Conc: N.D.



#12 AR-1232-2

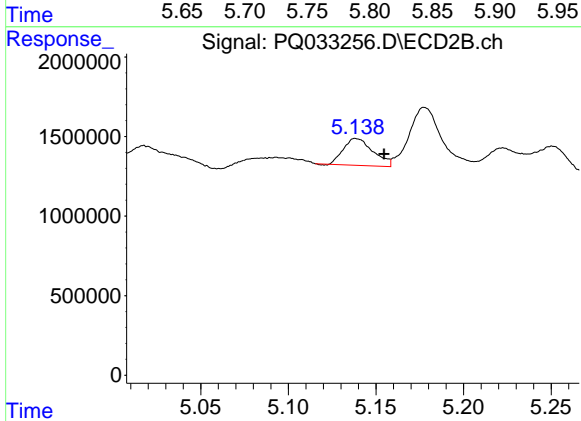
R.T.: 4.961 min
 Delta R.T.: -0.014 min
 Response: 2588657
 Conc: 68.84 ng/ml



#13 AR-1232-3

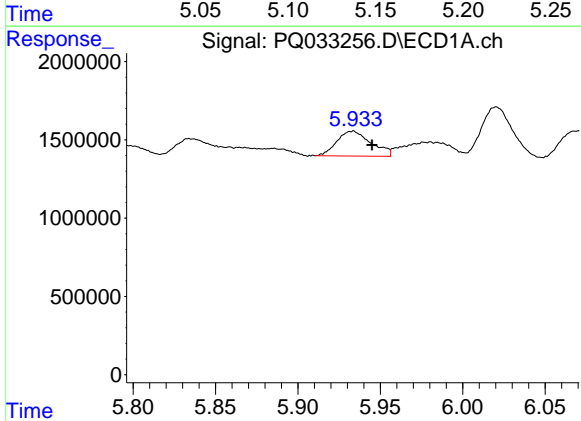
R.T.: 5.769 min
 Delta R.T.: -0.013 min
 Response: 4890661
 Conc: 102.29 ng/ml

Instrument :
 ECD_Q
 ClientSampleId :



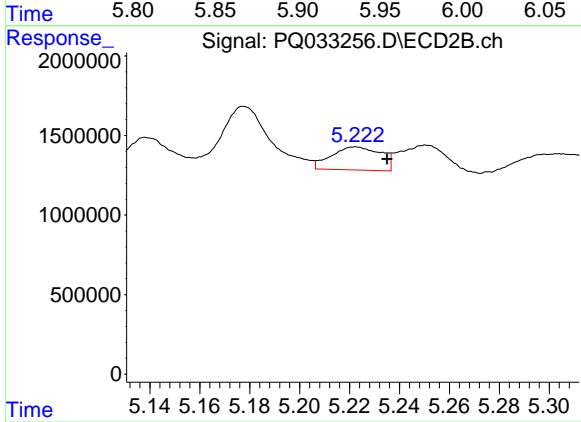
#13 AR-1232-3

R.T.: 5.138 min
 Delta R.T.: -0.017 min
 Response: 1993616
 Conc: 101.79 ng/ml



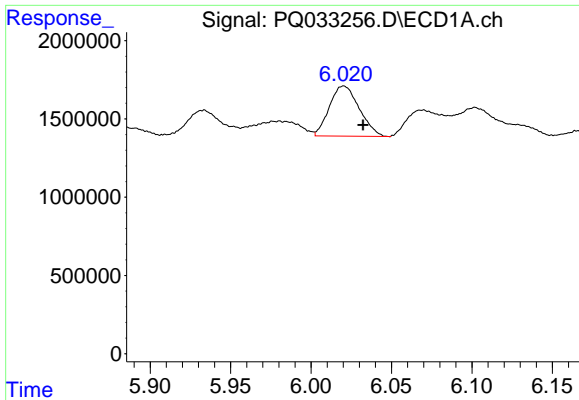
#14 AR-1232-4

R.T.: 5.934 min
 Delta R.T.: -0.011 min
 Response: 2284365
 Conc: 95.91 ng/ml



#14 AR-1232-4

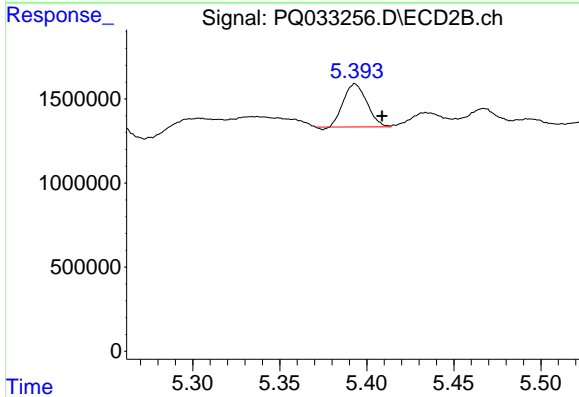
R.T.: 5.223 min
 Delta R.T.: -0.012 min
 Response: 2003597
 Conc: 116.74 ng/ml



#15 AR-1232-5

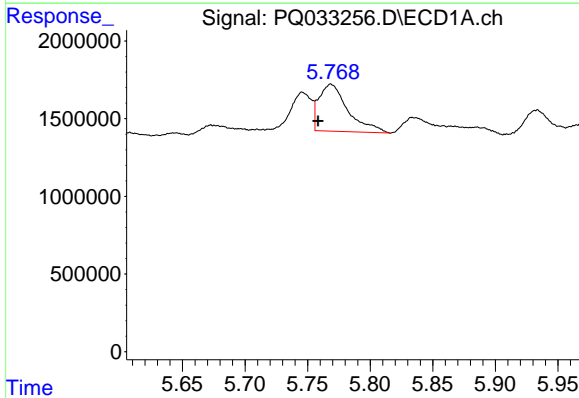
R.T.: 6.020 min
 Delta R.T.: -0.012 min
 Response: 4144182
 Conc: 232.37 ng/ml

Instrument :
 ECD_Q
 ClientSampleId :



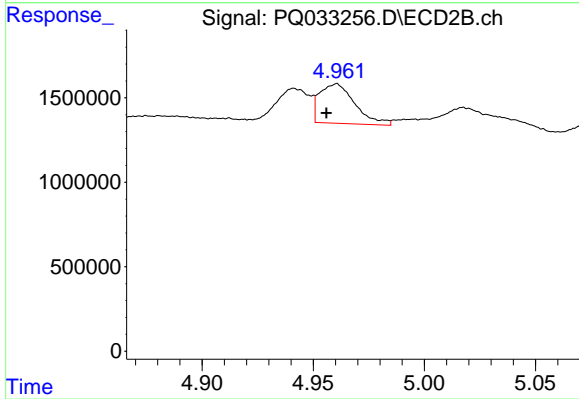
#15 AR-1232-5

R.T.: 5.393 min
 Delta R.T.: -0.016 min
 Response: 2400388
 Conc: 123.10 ng/ml



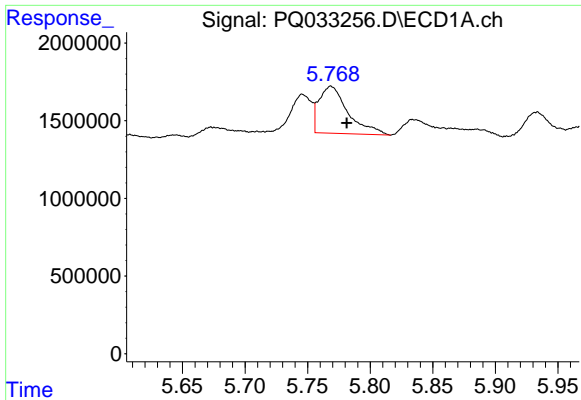
#16 AR-1242-1

R.T.: 5.769 min
 Delta R.T.: 0.010 min
 Response: 4890661
 Conc: 81.95 ng/ml



#16 AR-1242-1

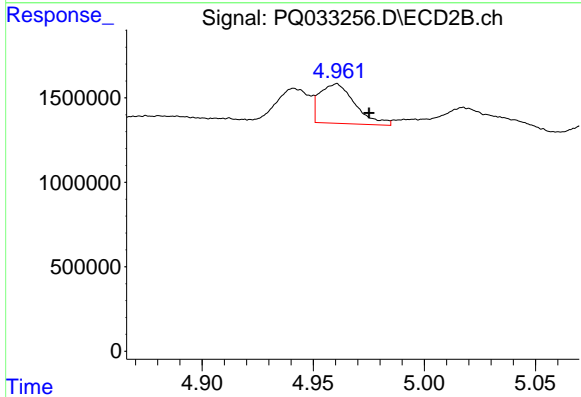
R.T.: 4.961 min
 Delta R.T.: 0.005 min
 Response: 2588657
 Conc: 53.20 ng/ml



#17 AR-1242-2

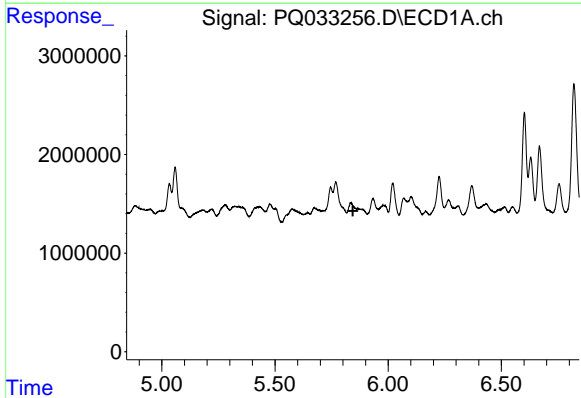
R.T.: 5.769 min
 Delta R.T.: -0.013 min
 Response: 4890661
 Conc: 56.31 ng/ml

Instrument :
 ECD_Q
 ClientSampleId :



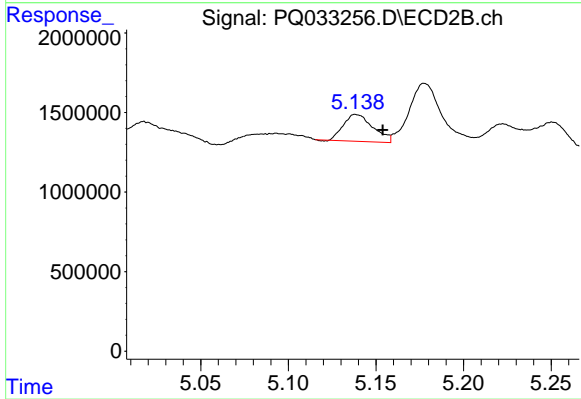
#17 AR-1242-2

R.T.: 4.961 min
 Delta R.T.: -0.014 min
 Response: 2588657
 Conc: 38.35 ng/ml



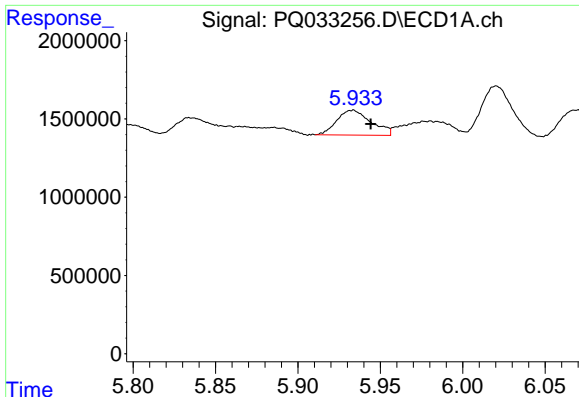
#18 AR-1242-3

R.T.: 0.000 min
 Exp R.T. : 5.844 min
 Response: 0
 Conc: N.D.



#18 AR-1242-3

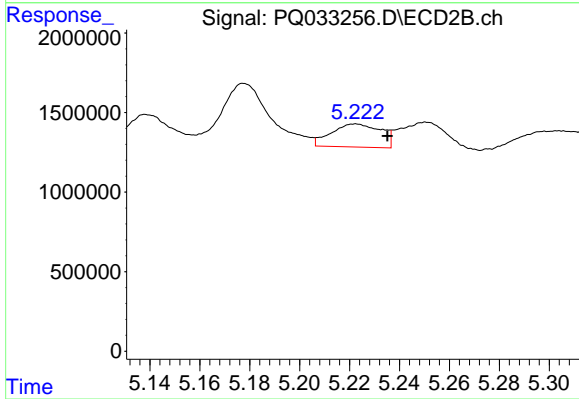
R.T.: 5.138 min
 Delta R.T.: -0.016 min
 Response: 1993616
 Conc: 54.42 ng/ml



#19 AR-1242-4

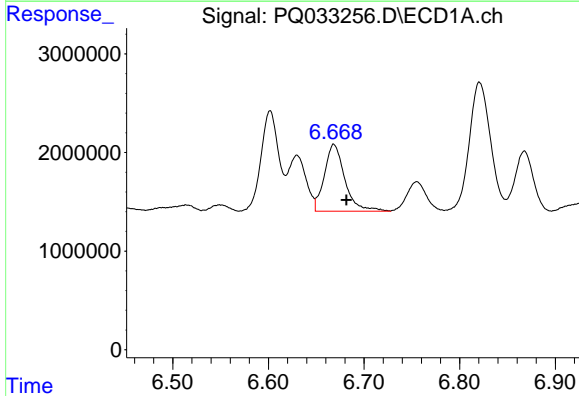
R.T.: 5.934 min
 Delta R.T.: -0.010 min
 Response: 2284365
 Conc: 52.97 ng/ml

Instrument :
 ECD_Q
 ClientSampled :



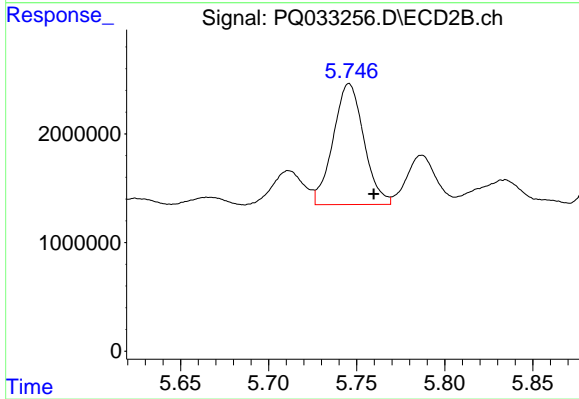
#19 AR-1242-4

R.T.: 5.223 min
 Delta R.T.: -0.012 min
 Response: 2003597
 Conc: 54.40 ng/ml



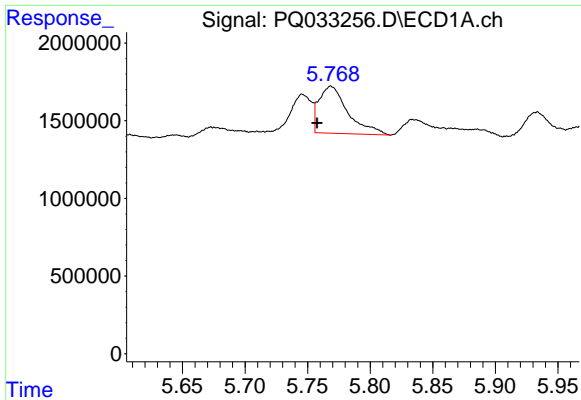
#20 AR-1242-5

R.T.: 6.668 min
 Delta R.T.: -0.013 min
 Response: 10056260
 Conc: 203.99 ng/ml



#20 AR-1242-5

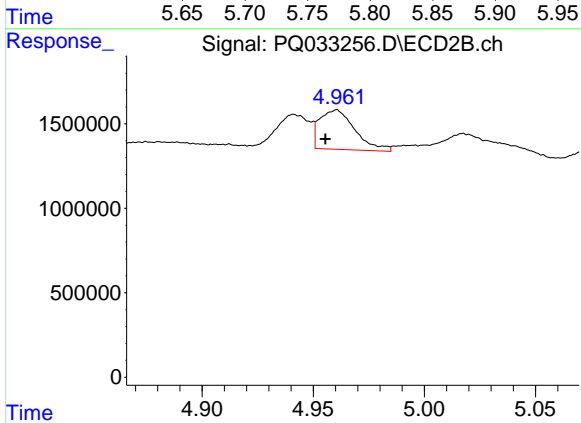
R.T.: 5.746 min
 Delta R.T.: -0.014 min
 Response: 13517390
 Conc: 281.38 ng/ml



#21 AR-1248-1

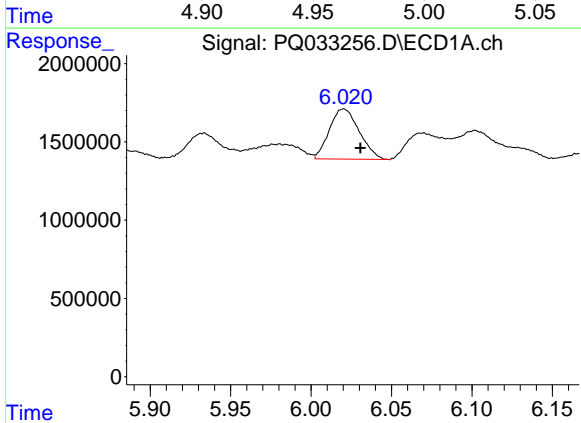
R.T.: 5.769 min
 Delta R.T.: 0.011 min
 Response: 4890661
 Conc: 98.60 ng/ml

Instrument :
 ECD_Q
 ClientSampled :



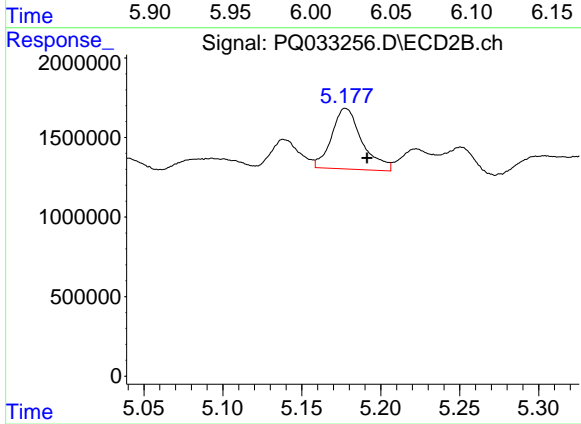
#21 AR-1248-1

R.T.: 4.961 min
 Delta R.T.: 0.005 min
 Response: 2588657
 Conc: 63.17 ng/ml



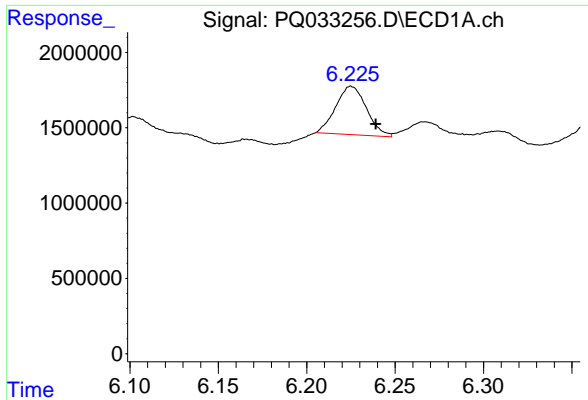
#22 AR-1248-2

R.T.: 6.020 min
 Delta R.T.: -0.010 min
 Response: 4144182
 Conc: 56.34 ng/ml



#22 AR-1248-2

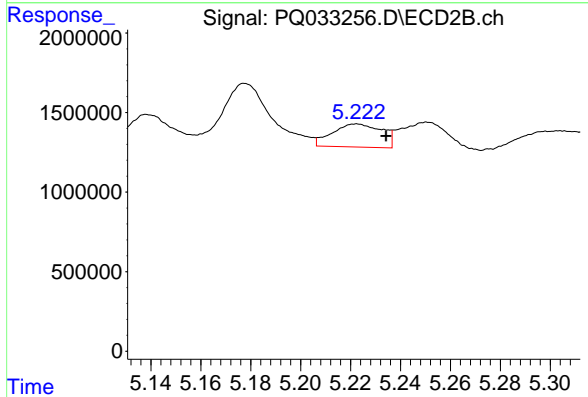
R.T.: 5.177 min
 Delta R.T.: -0.014 min
 Response: 5108389
 Conc: 92.98 ng/ml



#23 AR-1248-3

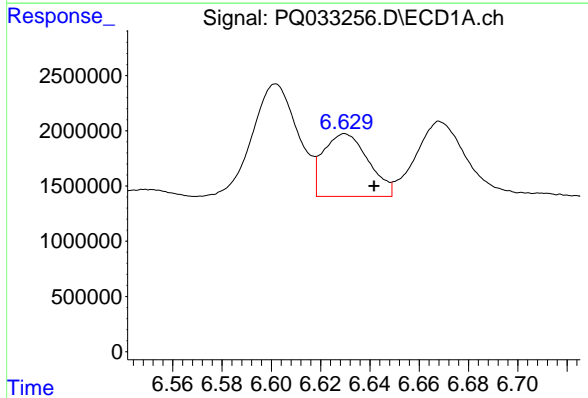
R.T.: 6.225 min
 Delta R.T.: -0.014 min
 Response: 3888264
 Conc: 47.58 ng/ml

Instrument :
 ECD_Q
 ClientSampled :



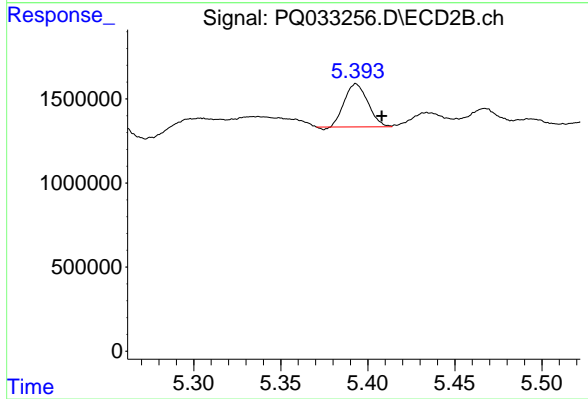
#23 AR-1248-3

R.T.: 5.223 min
 Delta R.T.: -0.011 min
 Response: 2003597
 Conc: 35.78 ng/ml



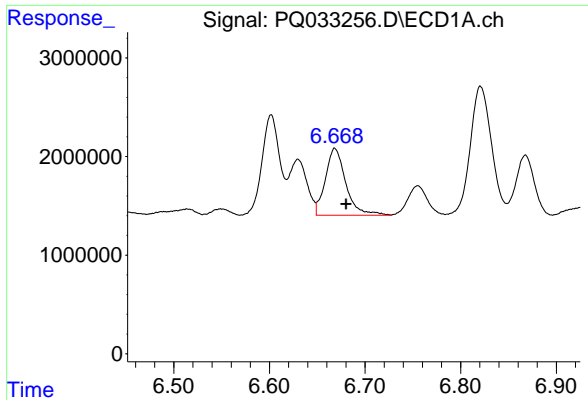
#24 AR-1248-4

R.T.: 6.630 min
 Delta R.T.: -0.012 min
 Response: 7206776
 Conc: 76.94 ng/ml



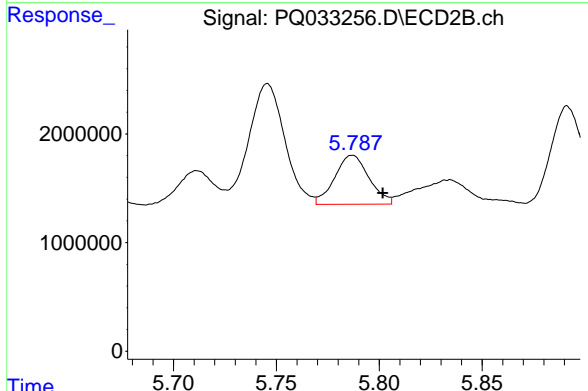
#24 AR-1248-4

R.T.: 5.393 min
 Delta R.T.: -0.015 min
 Response: 2400388
 Conc: 34.80 ng/ml

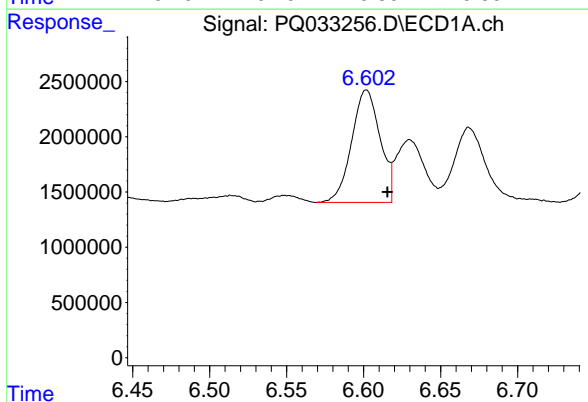


#25 AR-1248-5
 R.T.: 6.668 min
 Delta R.T.: -0.012 min
 Response: 10056260
 Conc: 113.24 ng/ml

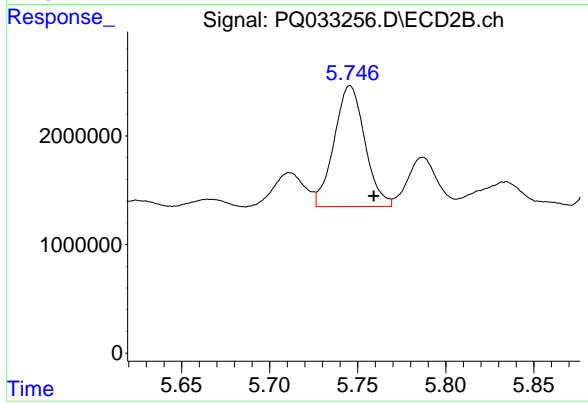
Instrument :
 ECD_Q
 ClientSampleId :



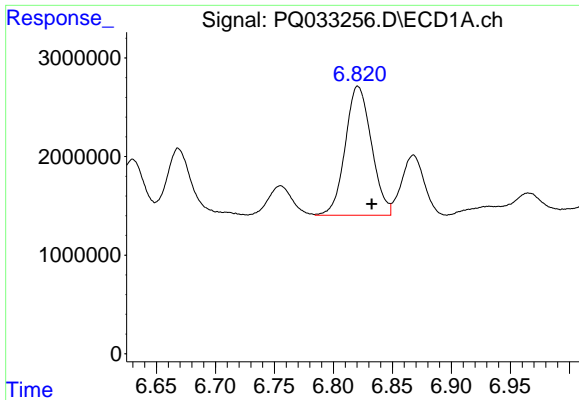
#25 AR-1248-5
 R.T.: 5.787 min
 Delta R.T.: -0.014 min
 Response: 5249621
 Conc: 75.94 ng/ml



#26 AR-1254-1
 R.T.: 6.602 min
 Delta R.T.: -0.013 min
 Response: 13083417
 Conc: 132.02 ng/ml



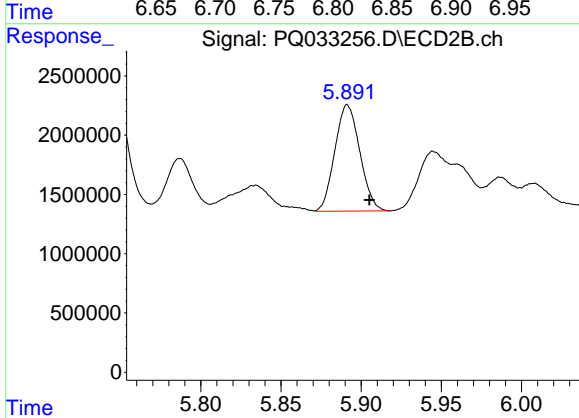
#26 AR-1254-1
 R.T.: 5.746 min
 Delta R.T.: -0.013 min
 Response: 13517390
 Conc: 119.98 ng/ml



#27 AR-1254-2

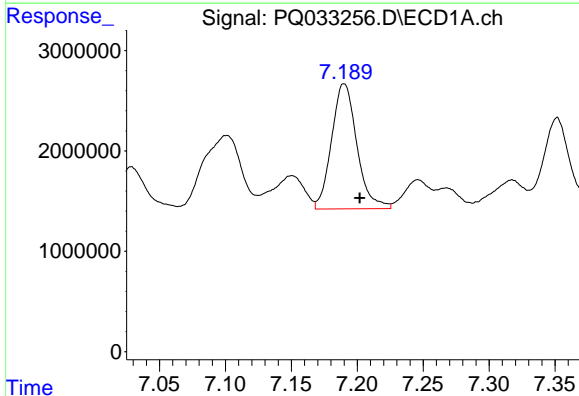
R.T.: 6.821 min
 Delta R.T.: -0.012 min
 Response: 20205187
 Conc: 129.29 ng/ml

Instrument :
 ECD_Q
 ClientSampled :



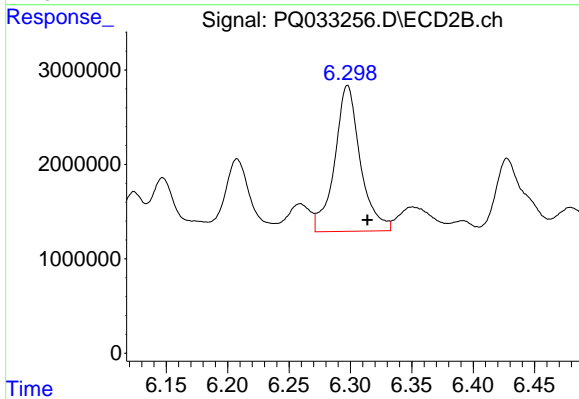
#27 AR-1254-2

R.T.: 5.891 min
 Delta R.T.: -0.014 min
 Response: 9736137
 Conc: 98.60 ng/ml



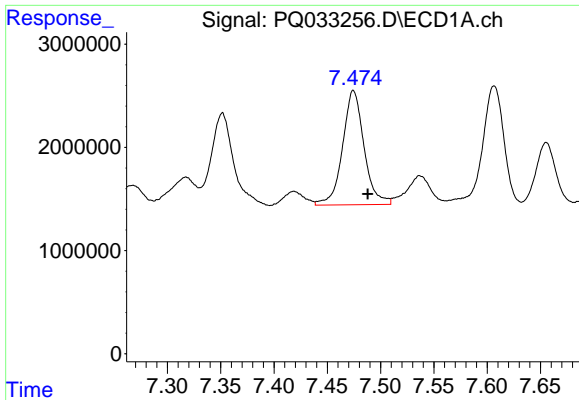
#28 AR-1254-3

R.T.: 7.190 min
 Delta R.T.: -0.012 min
 Response: 16654459
 Conc: 98.15 ng/ml



#28 AR-1254-3

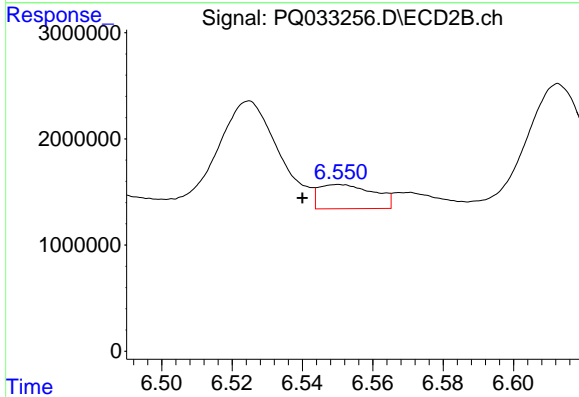
R.T.: 6.298 min
 Delta R.T.: -0.016 min
 Response: 22474898
 Conc: 135.24 ng/ml



#29 AR-1254-4

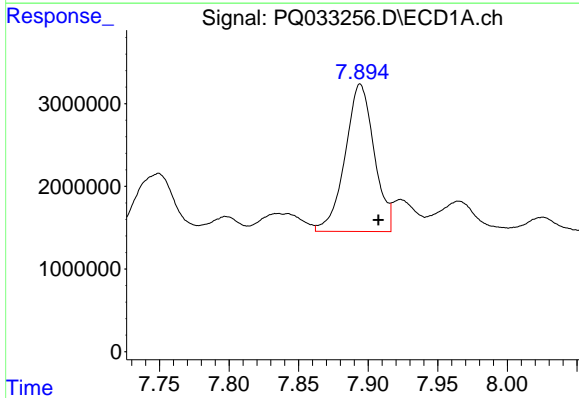
R.T.: 7.474 min
 Delta R.T.: -0.013 min
 Response: 15508590
 Conc: 125.60 ng/ml

Instrument :
 ECD_Q
 ClientSampleId :



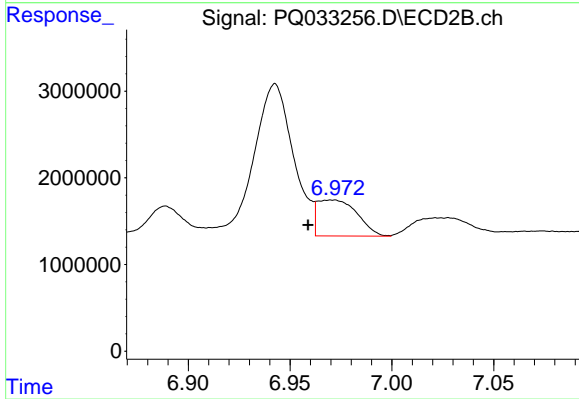
#29 AR-1254-4

R.T.: 6.550 min
 Delta R.T.: 0.010 min
 Response: 2470420
 Conc: 23.22 ng/ml



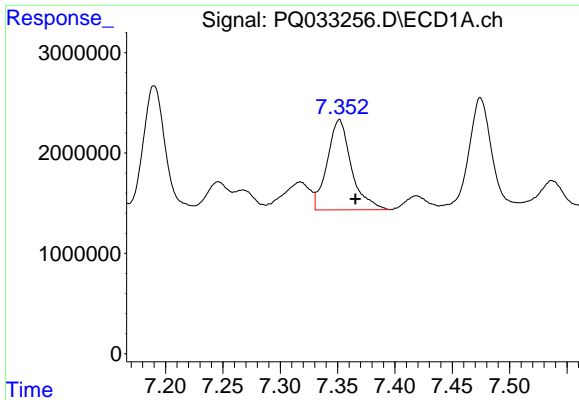
#30 AR-1254-5

R.T.: 7.894 min
 Delta R.T.: -0.013 min
 Response: 25857316
 Conc: 195.33 ng/ml



#30 AR-1254-5

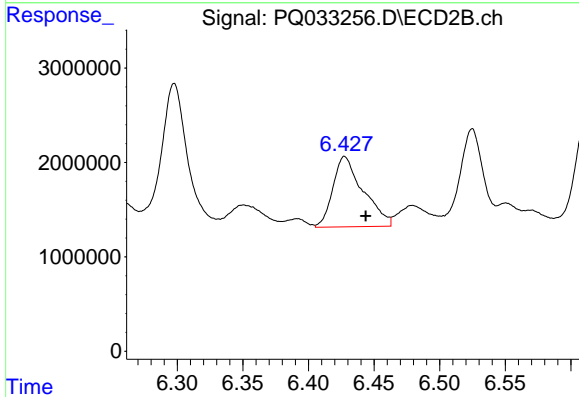
R.T.: 6.972 min
 Delta R.T.: 0.013 min
 Response: 5678772
 Conc: 38.66 ng/ml



#31 AR-1260-1

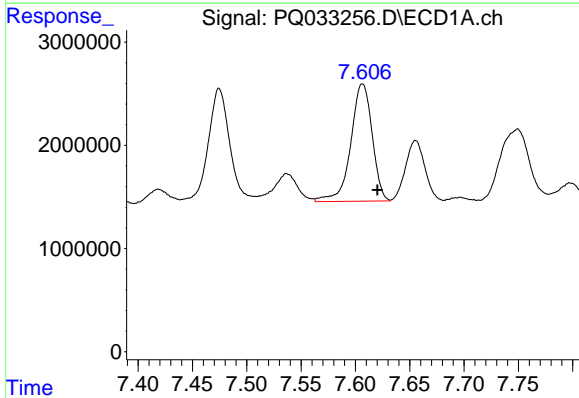
R.T.: 7.352 min
 Delta R.T.: -0.014 min
 Response: 13194316
 Conc: 123.36 ng/ml

Instrument :
 ECD_Q
 ClientSampleId :



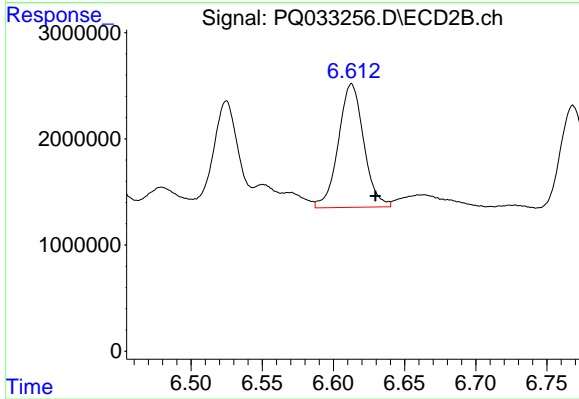
#31 AR-1260-1

R.T.: 6.427 min
 Delta R.T.: -0.016 min
 Response: 11957945
 Conc: 127.31 ng/ml



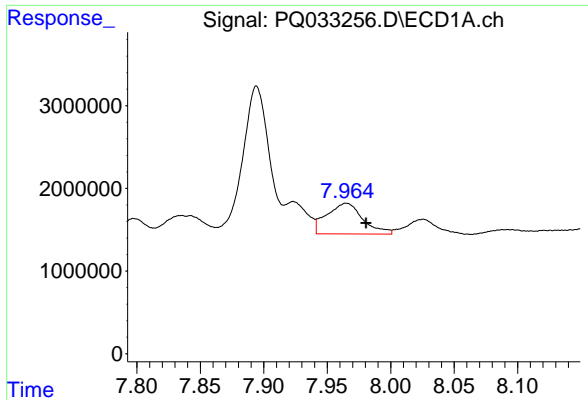
#32 AR-1260-2

R.T.: 7.607 min
 Delta R.T.: -0.014 min
 Response: 15615038
 Conc: 123.66 ng/ml



#32 AR-1260-2

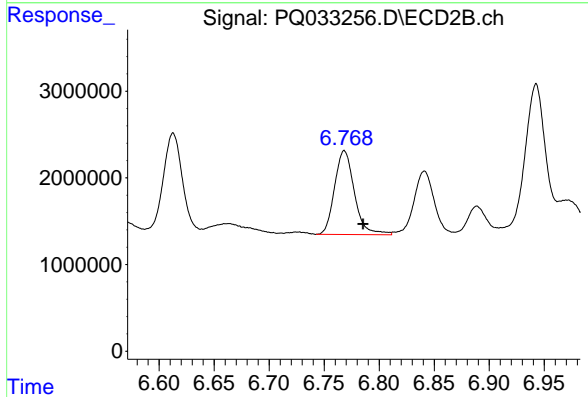
R.T.: 6.613 min
 Delta R.T.: -0.017 min
 Response: 14410670
 Conc: 123.69 ng/ml



#33 AR-1260-3

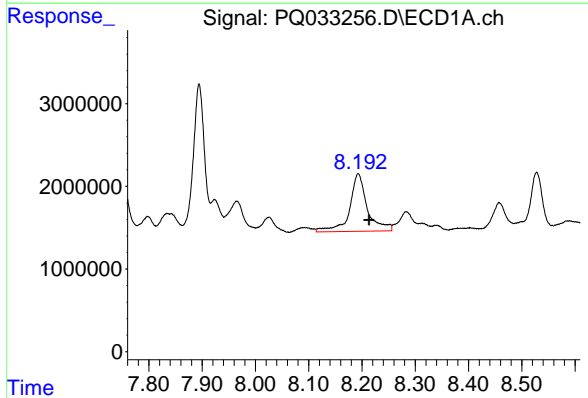
R.T.: 7.965 min
 Delta R.T.: -0.015 min
 Response: 7327088
 Conc: 94.07 ng/ml

Instrument :
 ECD_Q
 ClientSampleId :



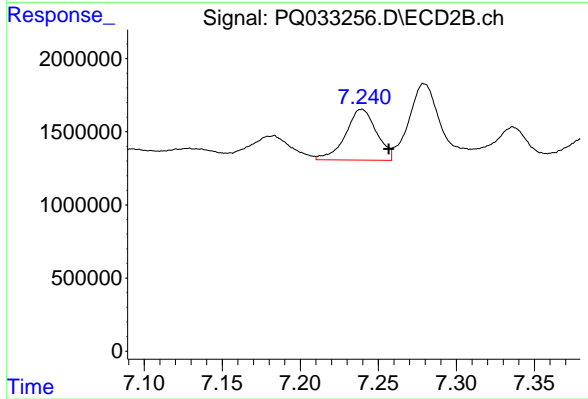
#33 AR-1260-3

R.T.: 6.768 min
 Delta R.T.: -0.017 min
 Response: 12154655
 Conc: 112.71 ng/ml



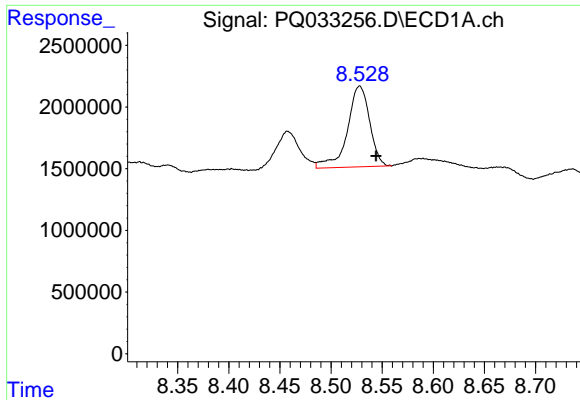
#34 AR-1260-4

R.T.: 8.193 min
 Delta R.T.: -0.020 min
 Response: 16111034
 Conc: 159.16 ng/ml



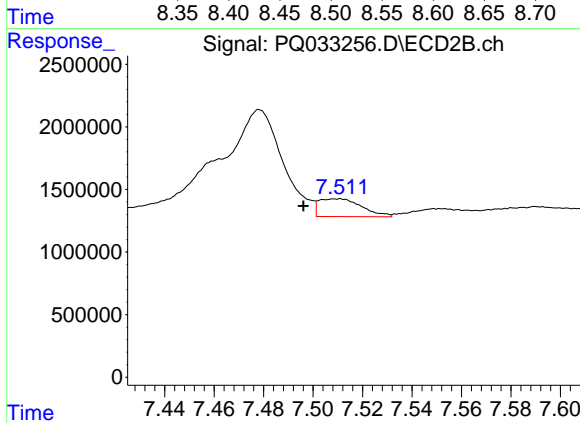
#34 AR-1260-4

R.T.: 7.239 min
 Delta R.T.: -0.017 min
 Response: 4809351
 Conc: 62.57 ng/ml

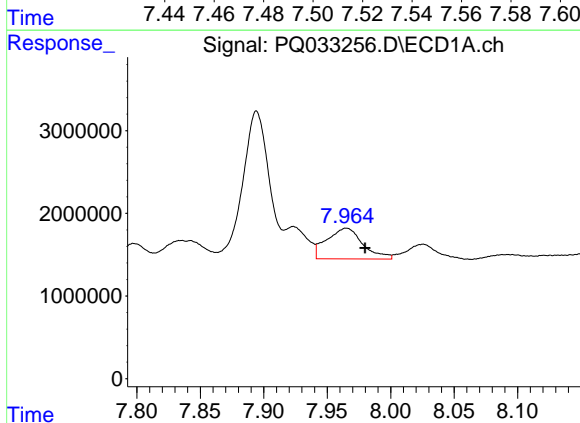


#35 AR-1260-5
 R.T.: 8.528 min
 Delta R.T.: -0.016 min
 Response: 9951088
 Conc: 52.70 ng/ml

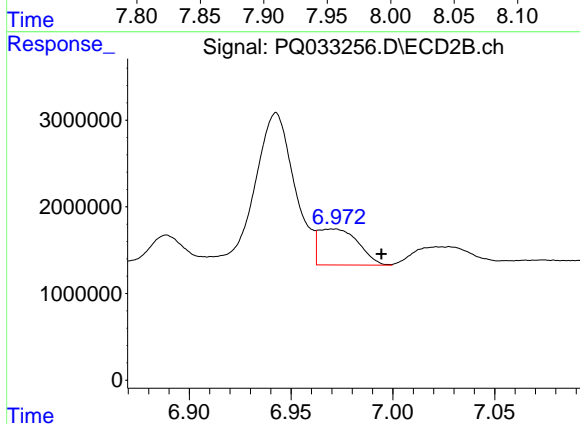
Instrument :
 ECD_Q
 ClientSampleId :



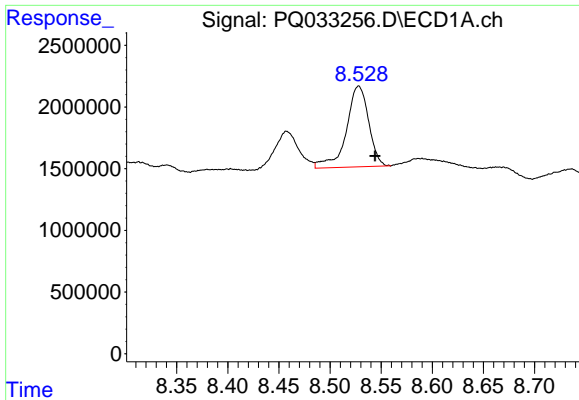
#35 AR-1260-5
 R.T.: 7.511 min
 Delta R.T.: 0.015 min
 Response: 1708849
 Conc: 8.89 ng/ml



#36 AR-1262-1
 R.T.: 7.965 min
 Delta R.T.: -0.014 min
 Response: 7327088
 Conc: 54.36 ng/ml

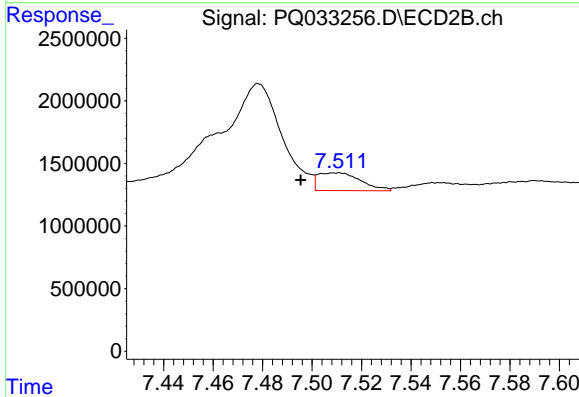


#36 AR-1262-1
 R.T.: 6.972 min
 Delta R.T.: -0.022 min
 Response: 5678772
 Conc: 44.19 ng/ml

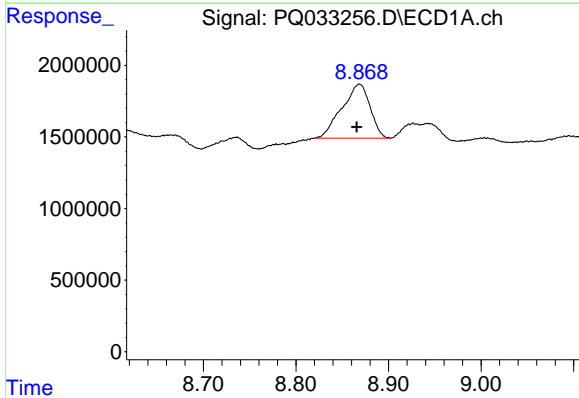


#37 AR-1262-2
 R.T.: 8.528 min
 Delta R.T.: -0.016 min
 Response: 9951088
 Conc: 40.24 ng/ml

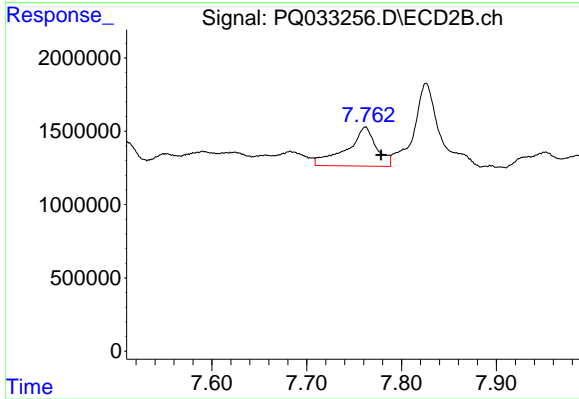
Instrument :
 ECD_Q
 ClientSampleId :



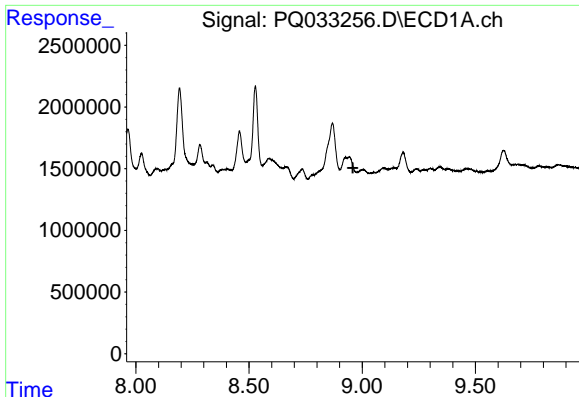
#37 AR-1262-2
 R.T.: 7.511 min
 Delta R.T.: 0.016 min
 Response: 1708849
 Conc: 7.13 ng/ml



#38 AR-1262-3
 R.T.: 8.869 min
 Delta R.T.: 0.003 min
 Response: 7971513
 Conc: 48.19 ng/ml



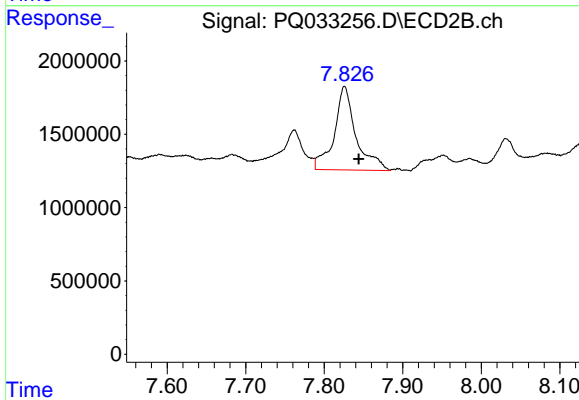
#38 AR-1262-3
 R.T.: 7.762 min
 Delta R.T.: -0.016 min
 Response: 5796549
 Conc: 62.23 ng/ml



#39 AR-1262-4

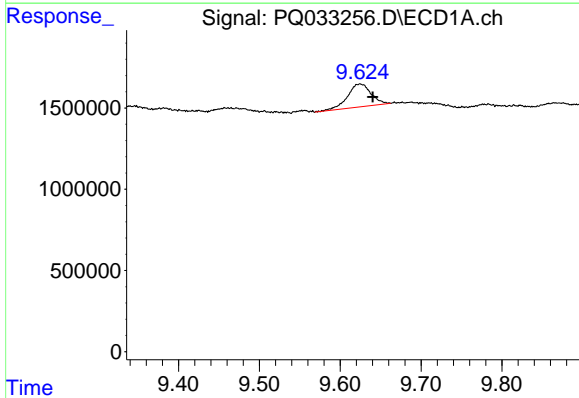
R.T.: 0.000 min
 Exp R.T.: 8.959 min
 Response: 0
 Conc: N.D.

Instrument :
 ECD_Q
 ClientSampled :



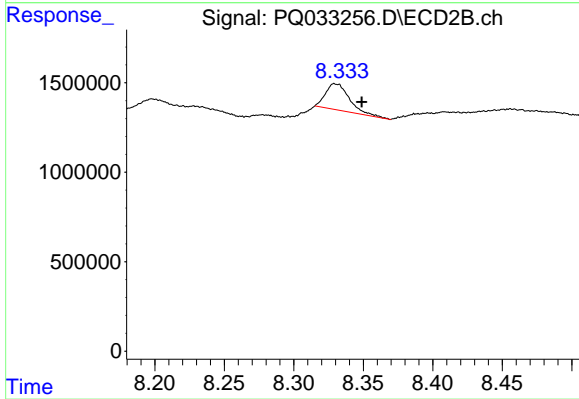
#39 AR-1262-4

R.T.: 7.826 min
 Delta R.T.: -0.018 min
 Response: 11004138
 Conc: 63.21 ng/ml



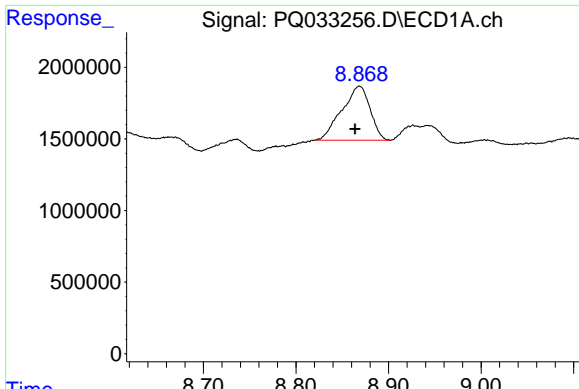
#40 AR-1262-5

R.T.: 9.625 min
 Delta R.T.: -0.016 min
 Response: 2827722
 Conc: 32.32 ng/ml



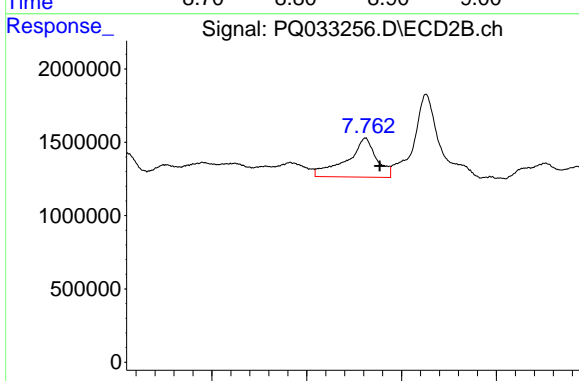
#40 AR-1262-5

R.T.: 8.329 min
 Delta R.T.: -0.020 min
 Response: 1758826
 Conc: 21.80 ng/ml

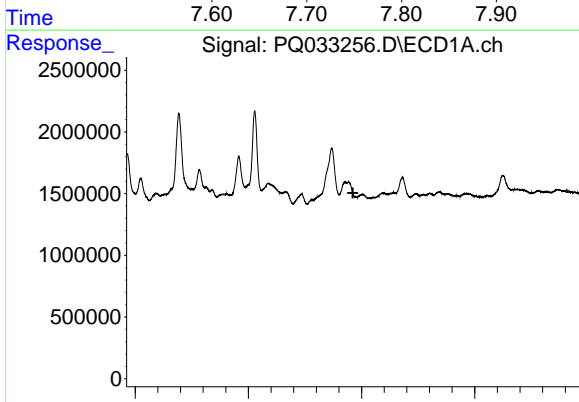


#41 AR-1268-1
 R.T.: 8.869 min
 Delta R.T.: 0.005 min
 Response: 7971513
 Conc: 21.74 ng/ml

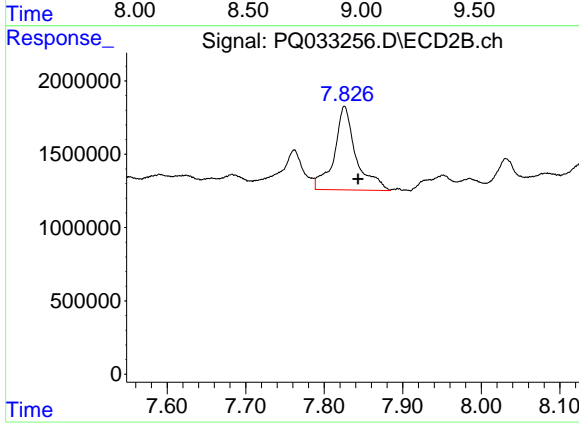
Instrument :
 ECD_Q
 ClientSampled :



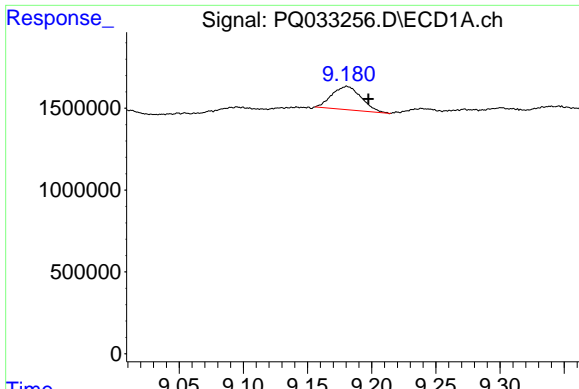
#41 AR-1268-1
 R.T.: 7.762 min
 Delta R.T.: -0.015 min
 Response: 5796549
 Conc: 16.95 ng/ml



#42 AR-1268-2
 R.T.: 0.000 min
 Exp R.T. : 8.962 min
 Response: 0
 Conc: N.D.

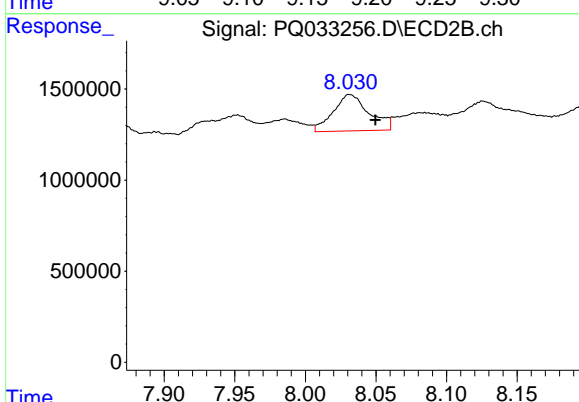


#42 AR-1268-2
 R.T.: 7.826 min
 Delta R.T.: -0.017 min
 Response: 11004138
 Conc: 35.61 ng/ml

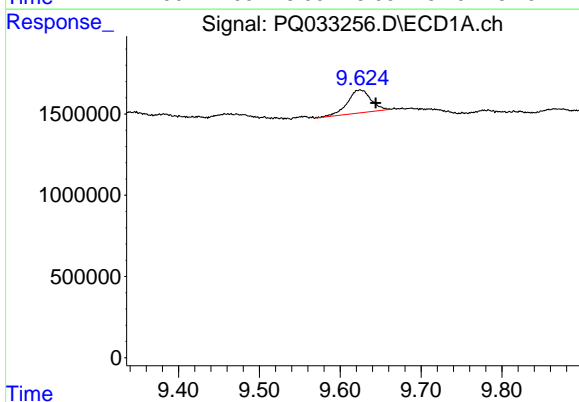


#43 AR-1268-3
 R.T.: 9.181 min
 Delta R.T.: -0.017 min
 Response: 2274822
 Conc: 8.07 ng/ml

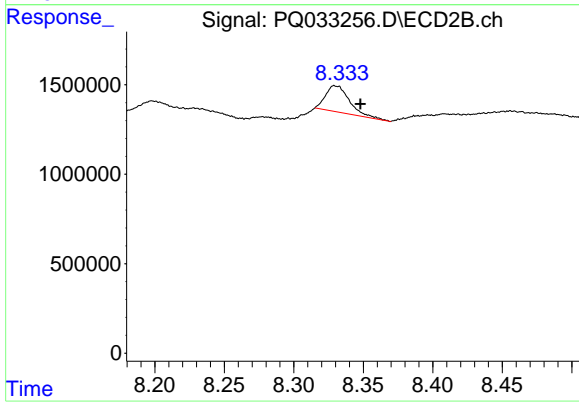
Instrument :
 ECD_Q
 ClientSampleId :



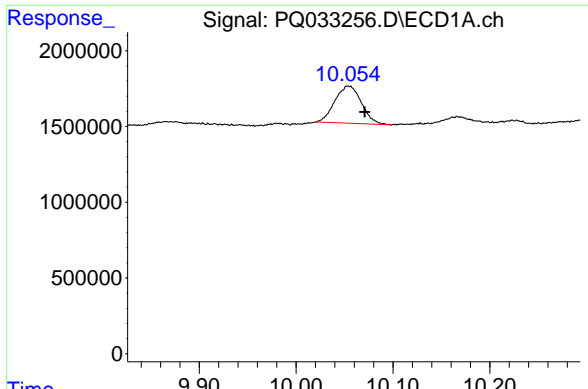
#43 AR-1268-3
 R.T.: 8.031 min
 Delta R.T.: -0.019 min
 Response: 3528107
 Conc: 13.79 ng/ml



#44 AR-1268-4
 R.T.: 9.625 min
 Delta R.T.: -0.019 min
 Response: 2827722
 Conc: 23.40 ng/ml



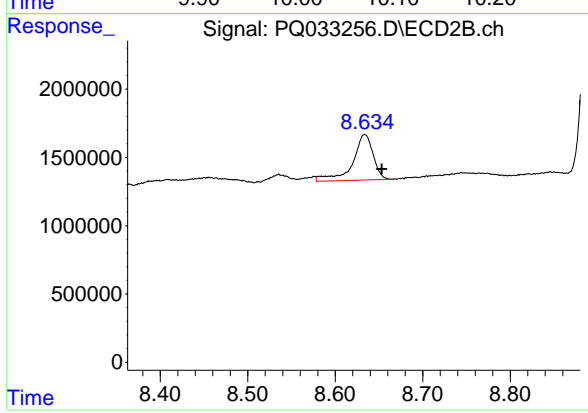
#44 AR-1268-4
 R.T.: 8.329 min
 Delta R.T.: -0.019 min
 Response: 1758826
 Conc: 15.94 ng/ml



#45 AR-1268-5

R.T.: 10.054 min
Delta R.T.: -0.017 min
Response: 4647756
Conc: 5.03 ng/ml

Instrument :
ECD_Q
ClientSampleId :



#45 AR-1268-5

R.T.: 8.634 min
Delta R.T.: -0.020 min
Response: 5420366
Conc: 6.48 ng/ml