

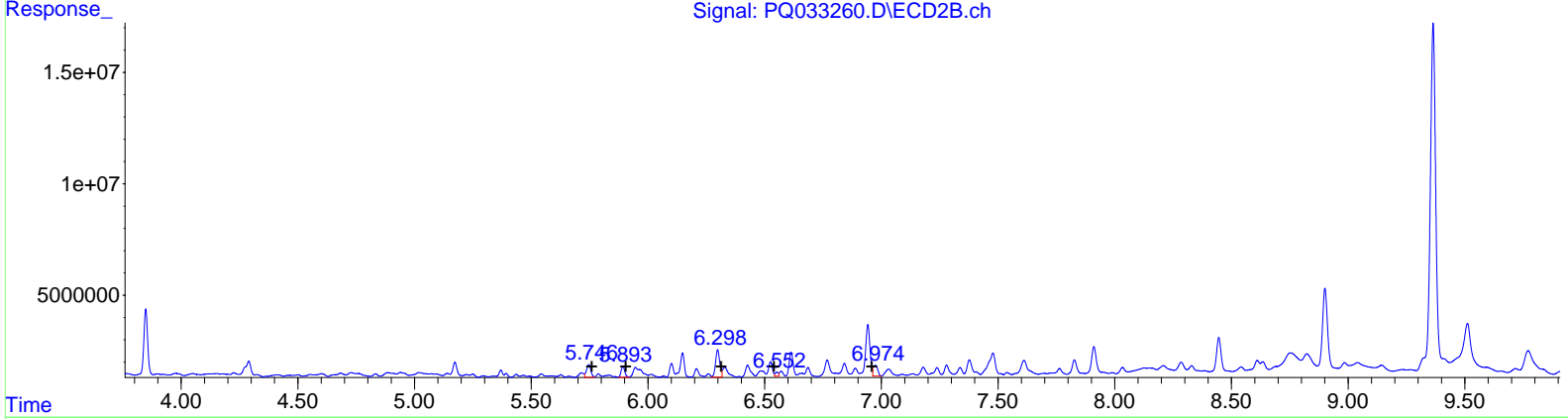
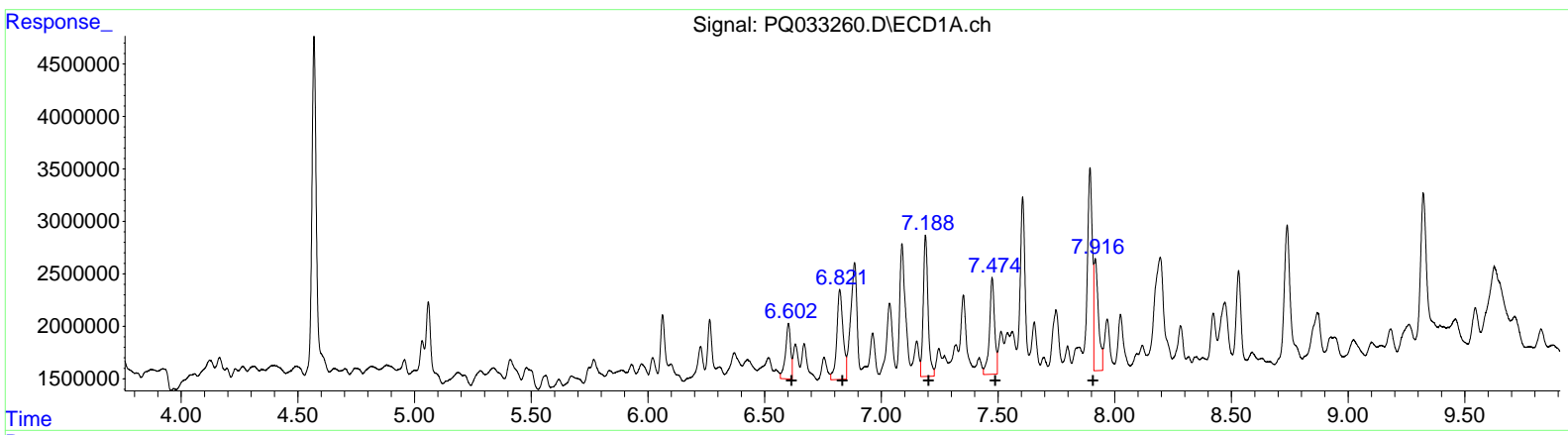
Data Path : Z:\pestpcbsrv\HPCHEM1\ECD_Q\Data\PQ101618\
 Data File : PQ033260.D
 Signal(s) : Signal #1: ECD1A.ch Signal #2: ECD2B.ch
 Acq On : 17 Oct 2018 07:26
 Operator : SM\SJ
 Sample : J5257-18
 Misc :
 ALS Vial : 50 Sample Multiplier: 1

Instrument :
 ECD_Q
ClientSampled :
 ESNN4

Manual Integrations
APPROVED
 Sohil
 10/23/2018 8:08:28 AM

Integration File signal 1: autoint1.e
 Integration File signal 2: autoint2.e
 Quant Time: Oct 23 01:53:31 2018
 Quant Method : Z:\pestpcbsrv\HPCHEM1\ECD_Q\Method\PQ100918CLP.M
 Quant Title : GC EXTRACTABLES
 QLast Update : Wed Oct 10 08:14:42 2018
 Response via : Initial Calibration
 Integrator: ChemStation

Volume Inj. : 1 µl
 Signal #1 Phase : ZB MR1 Signal #2 Phase: ZB MR2
 Signal #1 Info : 30Mx0.32mmx 0.5µm Signal #2 Info : 30M x 0.32mm x 0.25µm



QEdit

(26) AR-1254-1 (L6)		
R.T.	Response	Conc
6.60	8056010	81.29
6.82	15917063	101.85
7.19	19095377	112.53
7.47	13951823	112.99
7.92	14229540	107.49
(26) AR-1254-1 #2 (L6)		
R.T.	Response	Conc
5.75	7537807	66.91
5.89	5465627	55.35
6.30	15564102	93.65
6.55	1761125	16.55
6.97	6507628	44.30

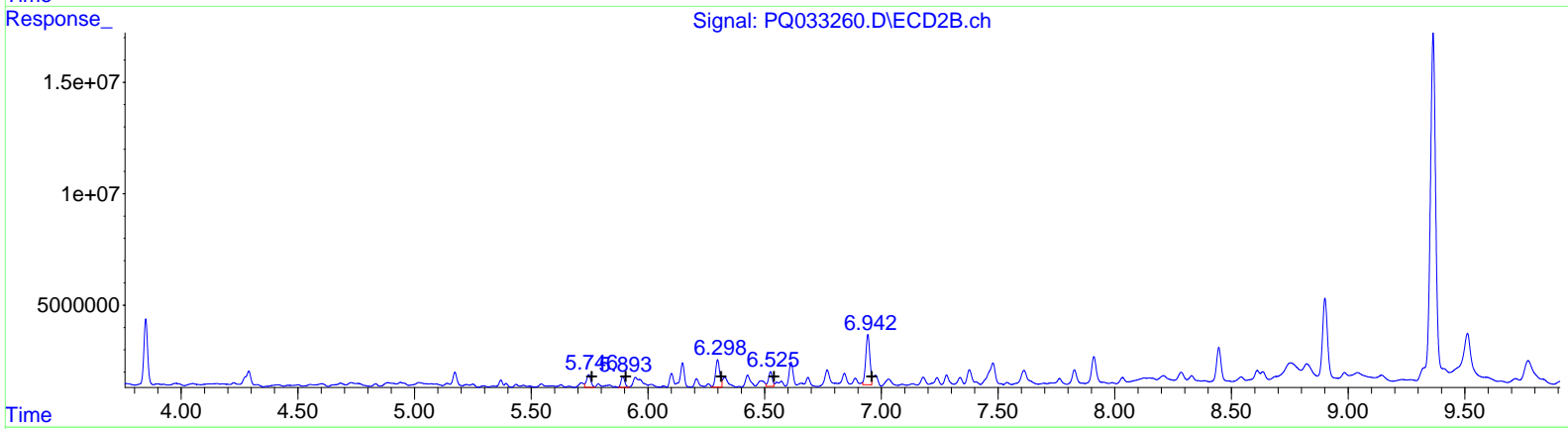
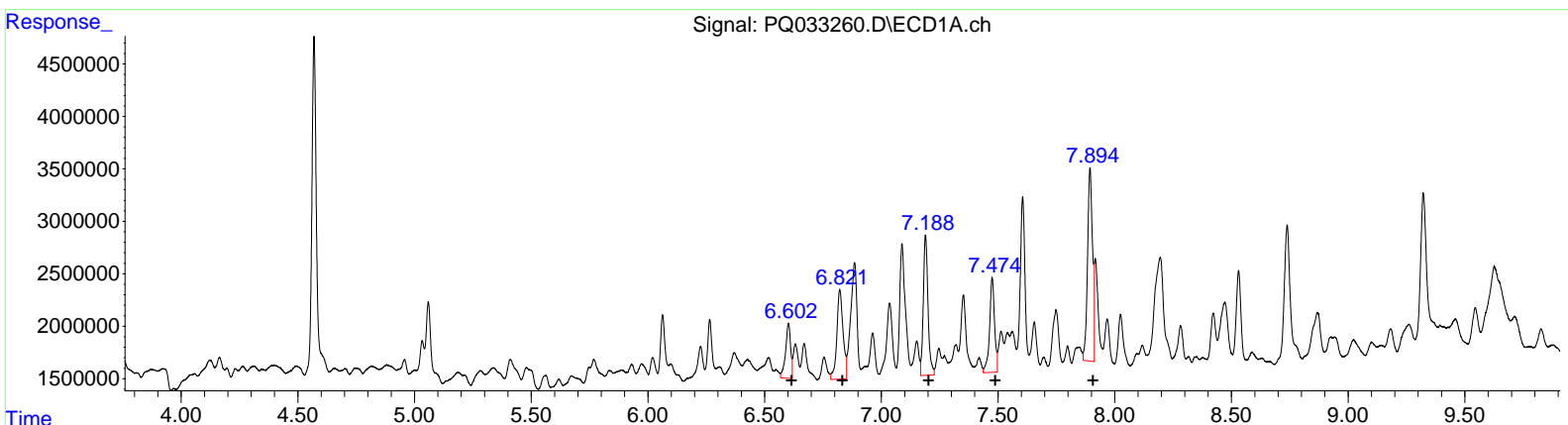
Data Path : Z:\pestpcbsrv\HPCHEM1\ECD_Q\Data\PQ101618\
 Data File : PQ033260.D
 Signal(s) : Signal #1: ECD1A.ch Signal #2: ECD2B.ch
 Acq On : 17 Oct 2018 07:26
 Operator : SM\SJ
 Sample : J5257-18
 Misc :
 ALS Vial : 50 Sample Multiplier: 1

Instrument :
 ECD_Q
ClientSampled :
 ESNN4

Manual Integrations
APPROVED
 Sohil
 10/23/2018 8:08:28 AM

Integration File signal 1: autoint1.e
 Integration File signal 2: autoint2.e
 Quant Time: Oct 17 16:33:59 2018
 Quant Method : Z:\pestpcbsrv\HPCHEM1\ECD_Q\Method\PQ100918CLP.M
 Quant Title : GC EXTRACTABLES
 QLast Update : Wed Oct 10 08:14:42 2018
 Response via : Initial Calibration
 Integrator: ChemStation

Volume Inj. : 1 µl
 Signal #1 Phase : ZB MR1 Signal #2 Phase: ZB MR2
 Signal #1 Info : 30Mx0.32mmx 0.5µm Signal #2 Info : 30M x 0.32mm x 0.25µm



(26) AR-1254-1 (L6)

R.T.	Response	Conc
6.60	7897531	79.69
6.82	15838178	101.35
7.19	18726974	110.36
7.47	13360464	108.20
7.89	27718341	209.39

(26) AR-1254-1 #2 (L6)

R.T.	Response	Conc
5.75	7537807	66.91
5.89	5465627	55.35
6.30	15564102	93.65
6.53	7461660	70.13
6.94	27364428	186.30

Quantitation Report (QT Reviewed)

Data Path : Z:\pestpcbsrv\HPCHEM1\ECD_Q\Data\PQ101618\
 Data File : PQ033260.D
 Signal(s) : Signal #1: ECD1A.ch Signal #2: ECD2B.ch
 Acq On : 17 Oct 2018 07:26
 Operator : SM\SJ
 Sample : J5257-18
 Misc :
 ALS Vial : 50 Sample Multiplier: 1

Instrument :
 ECD_Q
 Client Sampled :
 ESNN4

Manual Integrations
 APPROVED

Sohil
 10/23/2018 8:08:28 AM

Integration File signal 1: autoint1.e
 Integration File signal 2: autoint2.e
 Quant Time: Oct 17 16:33:59 2018
 Quant Method : Z:\pestpcbsrv\HPCHEM1\ECD_Q\Method\PQ100918CLP.M
 Quant Title : GC EXTRACTABLES
 QLast Update : Wed Oct 10 08:14:42 2018
 Response via : Initial Calibration
 Integrator: ChemStation

Volume Inj. : 1 µl
 Signal #1 Phase : ZB MR1 Signal #2 Phase: ZB MR2
 Signal #1 Info : 30Mx0.32mmx 0.5µm Signal #2 Info : 30M x 0.32mm x 0.25µm

Compound	RT#1	RT#2	Resp#1	Resp#2	ng/ml	ng/ml

System Monitoring Compounds						
1) SA Tetrachlo...	4.569	3.849	42591101	32433794	20.761	20.853
2) SA Decachlor...	10.403	8.901	73539032	50133954	38.903	31.186
Target Compounds						
26) L6 AR-1254-1	6.602	5.747	7897531	7537807	79.691	66.907
27) L6 AR-1254-2	6.822	5.893	15838178	5465627	101.346	55.351 #
28) L6 AR-1254-3	7.189	6.299	18726974	15564102	110.364	93.652
29) L6 AR-1254-4	7.475	6.525	13360464	7461660	108.204	70.131m#
30) L6 AR-1254-5	7.894	6.942	27718341	27364428	209.387m	186.298m

} SJ10/23/18

(f)=RT Delta > 1/2 Window (#)=Amounts differ by > 25% (m)=manual int.