

Data Path : Z:\pestpcbsrv\HPCHEM1\ECD_Q\Data\PQ101822\
 Data File : PQ059686.D
 Signal(s) : Signal #1: ECD1A.ch Signal #2: ECD2B.ch
 Acq On : 18 Oct 2022 22:39
 Operator : YP\AJ
 Sample : N4984-19
 Misc :
 ALS Vial : 25 Sample Multiplier: 1

Instrument :
 ECD_Q
 ClientSampleId :

Integration File signal 1: autoint1.e
 Integration File signal 2: autoint2.e
 Quant Time: Oct 19 05:09:50 2022
 Quant Method : Z:\pestpcbsrv\HPCHEM1\ECD_Q\Method\PQ100422CLP.M
 Quant Title : GC EXTRACTABLES
 QLast Update : Thu Oct 06 10:42:33 2022
 Response via : Initial Calibration
 Integrator: ChemStation

Volume Inj. : 1 µl
 Signal #1 Phase : ZB MR1 Signal #2 Phase: ZB MR2
 Signal #1 Info : 30Mx0.32mmx 0.5µm Signal #2 Info : 30M x 0.32mm x 0.25µm

Compound	RT#1	RT#2	Resp#1	Resp#2	ng/ml	ng/ml
System Monitoring Compounds						
1) SA Tetrachlo...	3.483	2.828	137.2E6	98498305	9.963	10.874
2) SA Decachlor...	8.654	7.604	82945969	116.6E6	16.702	15.276
Target Compounds						
3) L1 AR-1016-1	4.578	3.830	27319429	6834658	65.141	24.237 #
4) L1 AR-1016-2	4.606	3.857	40086482	4069900	64.661	9.582 #
5) L1 AR-1016-3	4.670	4.015	18007998	3005686	45.626	13.514 #
6) L1 AR-1016-4	4.757	4.052	38742986	7141309	117.657	41.771 #
7) L1 AR-1016-5	5.038	4.260	71279430	14881298	227.229	66.052 #
8) L2 AR-1221-1	3.683	3.048	3658536	806449	24.733	8.119 #
9) L2 AR-1221-2	3.763	3.098	9251534	5568111	89.390	81.346
10) L2 AR-1221-3	3.823	3.194	2804356	7351649	8.423	32.056 #
11) L3 AR-1232-1	3.823	3.194	2804356	7351649	9.965	38.180 #
12) L3 AR-1232-2	4.327	3.857	19374514	4069900	131.877	21.609 #
13) L3 AR-1232-3	4.606	4.015	40086482	3005686	140.467	30.822 #
14) L3 AR-1232-4	4.757	4.098	38742986	12231243	258.948	149.835 #
15) L3 AR-1232-5	4.832	4.260	25284110	14881298	240.891	155.849 #
16) L4 AR-1242-1	4.578	3.830	27319429	6834658	78.426	29.454 #
17) L4 AR-1242-2	4.606	3.857	40086482	4069900	78.371	11.675 #
18) L4 AR-1242-3	4.670	4.015	18007998	3005686	55.686	16.449 #
19) L4 AR-1242-4	4.757	4.098	38742986	12231243	143.777	72.514 #
20) L4 AR-1242-5	5.462	4.591	2255568	12100942	8.393	54.704 #
21) L5 AR-1248-1	4.578	3.830	27319429	6834658	103.003	38.444 #
22) L5 AR-1248-2	4.832	4.052	25284110	7141309	70.920	28.287 #
23) L5 AR-1248-3	5.038	4.098	71279430	12231243	165.967	48.445 #
24) L5 AR-1248-4	5.425	4.260	7131421	14881298	15.342	47.644 #
25) L5 AR-1248-5	5.462	4.629	2255568	16817660	4.900	53.525 #
26) L6 AR-1254-1	5.425	4.591	7131421	12100942	14.870	24.752 #
27) L6 AR-1254-2	5.610	4.740	23930287	18818803	32.174	43.455 #
28) L6 AR-1254-3	5.975	5.145	33657669	37167099	43.017	53.637
29) L6 AR-1254-4	6.262	5.370	7480542	24233383	13.684	56.291 #
30) L6 AR-1254-5	6.656	5.775	12121986	13012067	20.447	21.022
31) L7 AR-1260-1	6.168	5.267	5395229	30134068	9.697	66.881 #
32) L7 AR-1260-2	6.393	5.439	16628024	22807509	26.045	41.473 #
33) L7 AR-1260-3	6.740	5.606	4158269	14496673	9.298	27.944 #
34) L7 AR-1260-4	6.973	6.078	7864399	16459983	16.310	37.237 #
35) L7 AR-1260-5	7.299	6.297	26457225	28188261	30.008	27.639
36) L8 AR-1262-1	6.740	5.817	4158269	18636998	5.980	29.246 #
37) L8 AR-1262-2	7.299	6.297	26457225	28188261	24.339	24.100
38) L8 AR-1262-3	7.570	6.614f	5113109	15581579	7.691	33.835 #
39) L8 AR-1262-4	7.649	6.633	2245041	9686799	7.137	11.053 #
40) L8 AR-1262-5	8.100	7.154	1657148	46354199	5.805	116.656 #
41) L9 AR-1268-1	7.528	6.614f	10597970	15581579	9.072	11.076

Data Path : Z:\pestpcbsrv\HPCHEM1\ECD_Q\Data\PQ101822\
 Data File : PQ059686.D
 Signal(s) : Signal #1: ECD1A.ch Signal #2: ECD2B.ch
 Acq On : 18 Oct 2022 22:39
 Operator : YP\AJ
 Sample : N4984-19
 Misc :
 ALS Vial : 25 Sample Multiplier: 1

Instrument :
 ECD_Q
 ClientSampleId :

Integration File signal 1: autoint1.e
 Integration File signal 2: autoint2.e
 Quant Time: Oct 19 05:09:50 2022
 Quant Method : Z:\pestpcbsrv\HPCHEM1\ECD_Q\Method\PQ100422CLP.M
 Quant Title : GC EXTRACTABLES
 QLast Update : Thu Oct 06 10:42:33 2022
 Response via : Initial Calibration
 Integrator: ChemStation

Volume Inj. : 1 µl
 Signal #1 Phase : ZB MR1 Signal #2 Phase: ZB MR2
 Signal #1 Info : 30Mx0.32mmx 0.5µm Signal #2 Info : 30M x 0.32mm x 0.25µm

	Compound	RT#1	RT#2	Resp#1	Resp#2	ng/ml	ng/ml
42)	L9 AR-1268-2	7.649	6.633	2245041	9686799	2.145	7.487 #
43)	L9 AR-1268-3	7.800	6.828	16062385	7300545	19.109	6.613 #
44)	L9 AR-1268-4	8.100	7.154	1657148	46354199	5.132	102.344 #
45)	L9 AR-1268-5	8.421	7.380	18108645	4438456	8.040	1.241 #

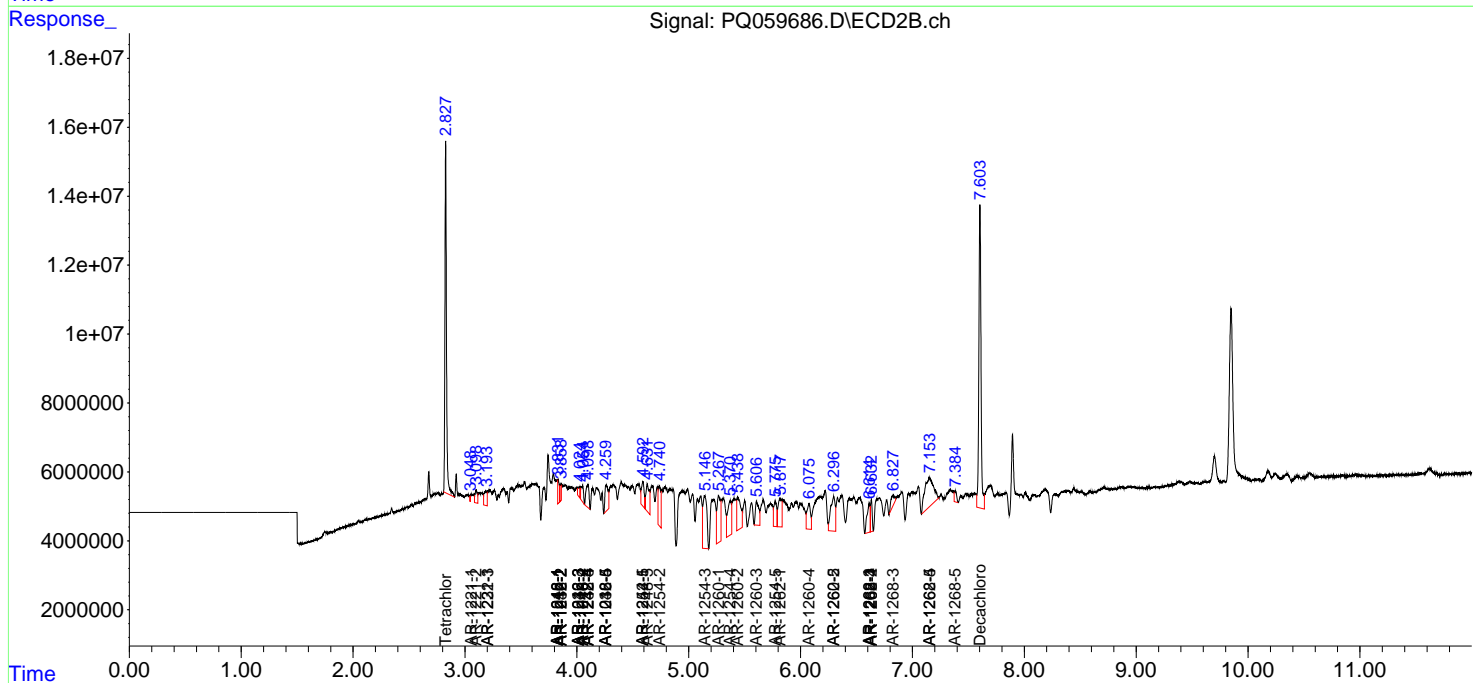
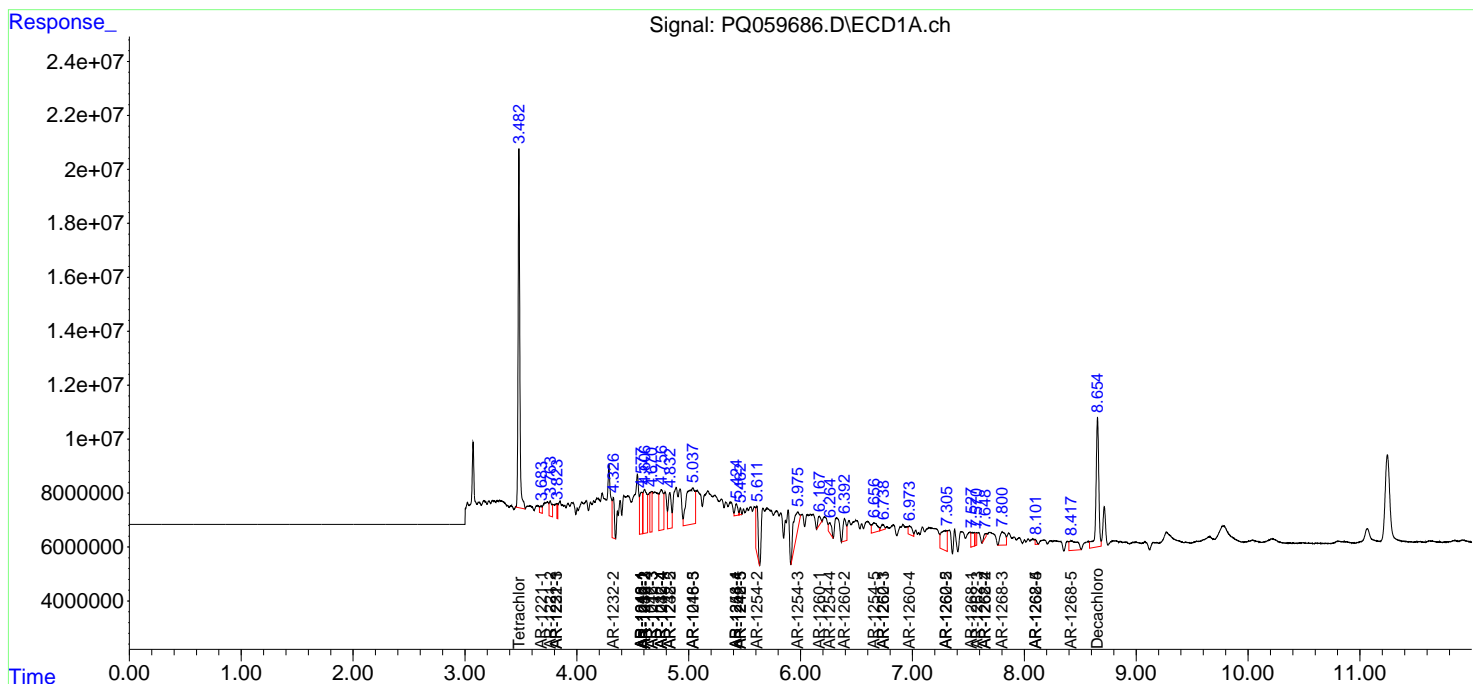
(f)=RT Delta > 1/2 Window (#)=Amounts differ by > 25% (m)=manual int.

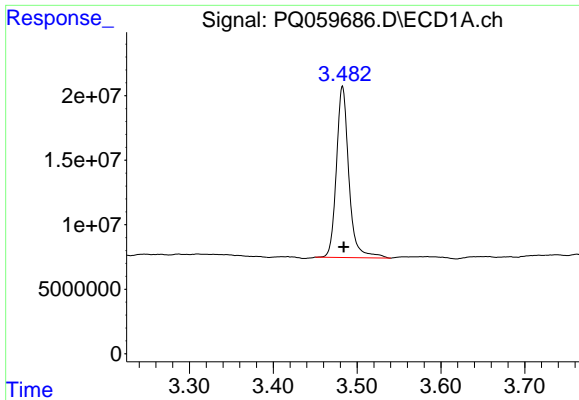
Data Path : Z:\pestpcbsrv\HPCHEM1\ECD_Q\Data\PQ101822\
 Data File : PQ059686.D
 Signal(s) : Signal #1: ECD1A.ch Signal #2: ECD2B.ch
 Acq On : 18 Oct 2022 22:39
 Operator : YP\AJ
 Sample : N4984-19
 Misc :
 ALS Vial : 25 Sample Multiplier: 1

Instrument :
 ECD_Q
 ClientSampleId :

Integration File signal 1: autoint1.e
 Integration File signal 2: autoint2.e
 Quant Time: Oct 19 05:09:50 2022
 Quant Method : Z:\pestpcbsrv\HPCHEM1\ECD_Q\Method\PQ100422CLP.M
 Quant Title : GC EXTRACTABLES
 QLast Update : Thu Oct 06 10:42:33 2022
 Response via : Initial Calibration
 Integrator: ChemStation

Volume Inj. : 1 µl
 Signal #1 Phase : ZB MR1 Signal #2 Phase: ZB MR2
 Signal #1 Info : 30Mx0.32mmx 0.5µm Signal #2 Info : 30M x 0.32mm x 0.25µm

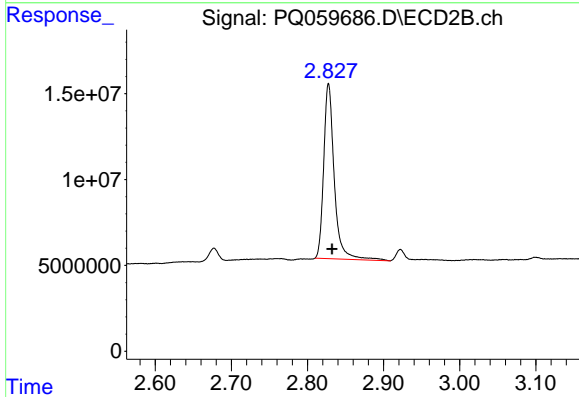




#1 Tetrachloro-m-xylene

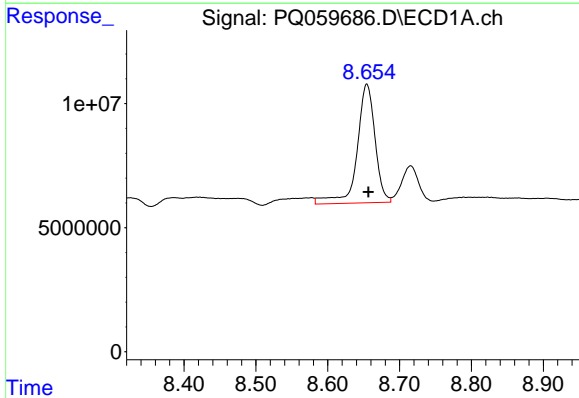
R.T.: 3.483 min
 Delta R.T.: -0.001 min
 Response: 137183995
 Conc: 9.96 ng/ml

Instrument :
 ECD_Q
 ClientSampleId :



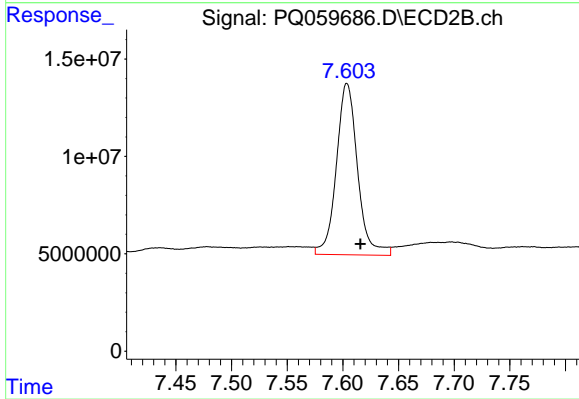
#1 Tetrachloro-m-xylene

R.T.: 2.828 min
 Delta R.T.: -0.005 min
 Response: 98498305
 Conc: 10.87 ng/ml



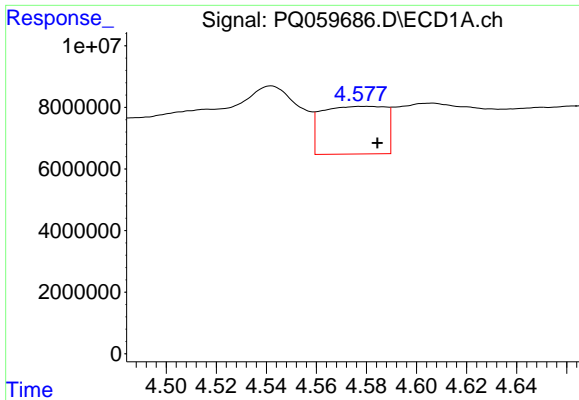
#2 Decachlorobiphenyl

R.T.: 8.654 min
 Delta R.T.: -0.002 min
 Response: 82945969
 Conc: 16.70 ng/ml



#2 Decachlorobiphenyl

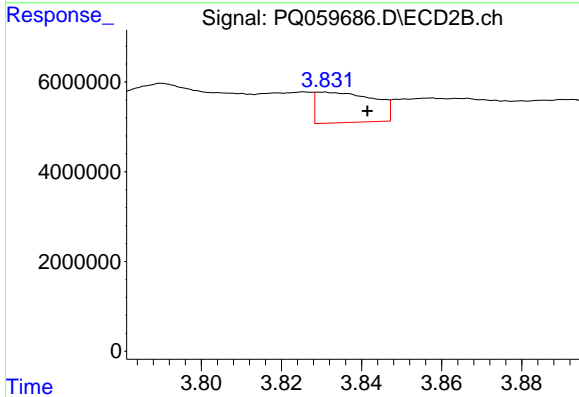
R.T.: 7.604 min
 Delta R.T.: -0.012 min
 Response: 116648589
 Conc: 15.28 ng/ml



#3 AR-1016-1

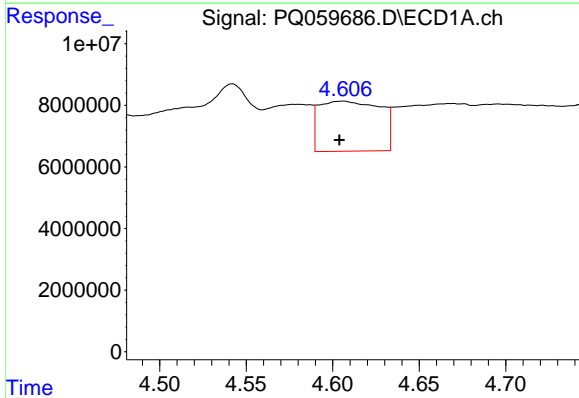
R.T.: 4.578 min
 Delta R.T.: -0.007 min
 Response: 27319429
 Conc: 65.14 ng/ml

Instrument :
 ECD_Q
 ClientSampleId :



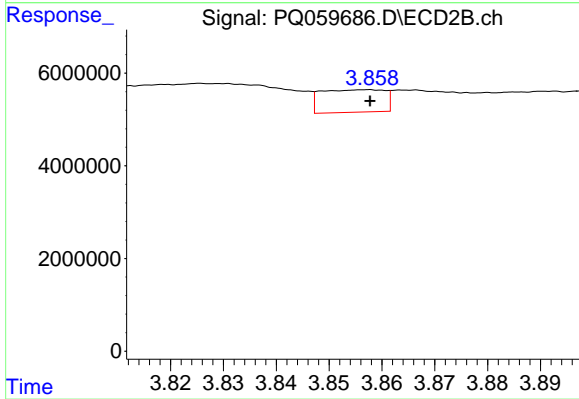
#3 AR-1016-1

R.T.: 3.830 min
 Delta R.T.: -0.011 min
 Response: 6834658
 Conc: 24.24 ng/ml



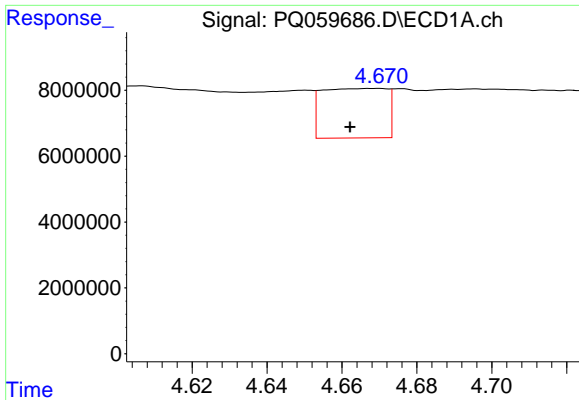
#4 AR-1016-2

R.T.: 4.606 min
 Delta R.T.: 0.002 min
 Response: 40086482
 Conc: 64.66 ng/ml



#4 AR-1016-2

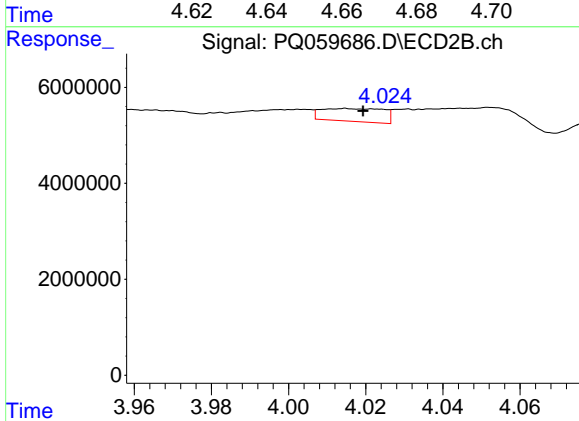
R.T.: 3.857 min
 Delta R.T.: 0.000 min
 Response: 4069900
 Conc: 9.58 ng/ml



#5 AR-1016-3

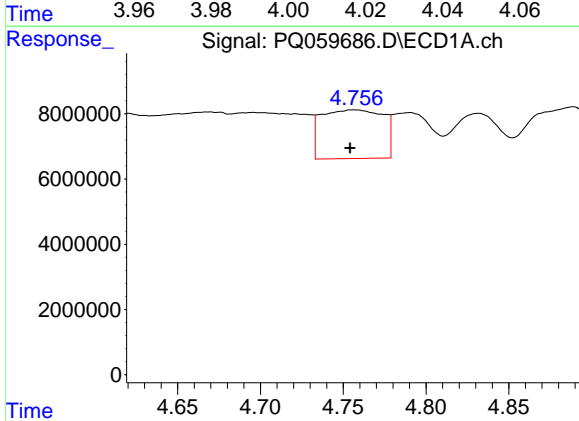
R.T.: 4.670 min
 Delta R.T.: 0.008 min
 Response: 18007998
 Conc: 45.63 ng/ml

Instrument :
 ECD_Q
 ClientSampleId :



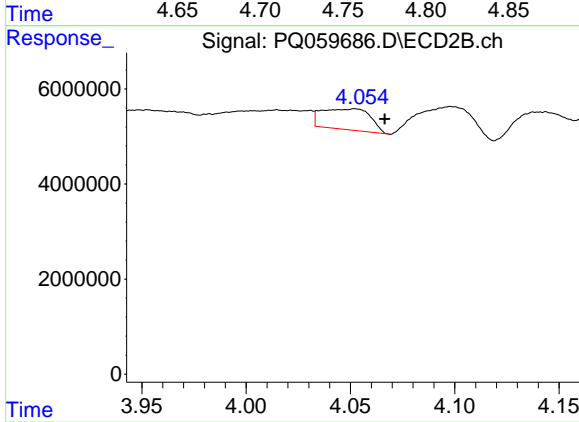
#5 AR-1016-3

R.T.: 4.015 min
 Delta R.T.: -0.004 min
 Response: 3005686
 Conc: 13.51 ng/ml



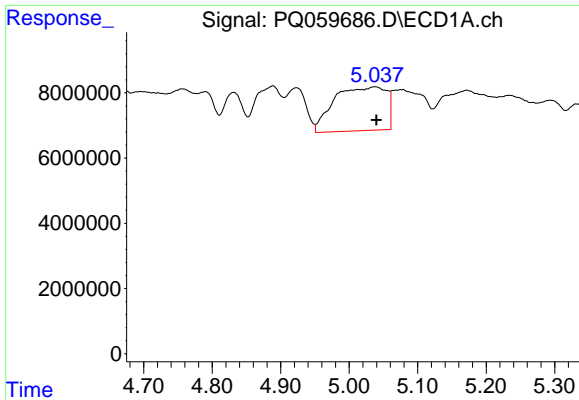
#6 AR-1016-4

R.T.: 4.757 min
 Delta R.T.: 0.003 min
 Response: 38742986
 Conc: 117.66 ng/ml



#6 AR-1016-4

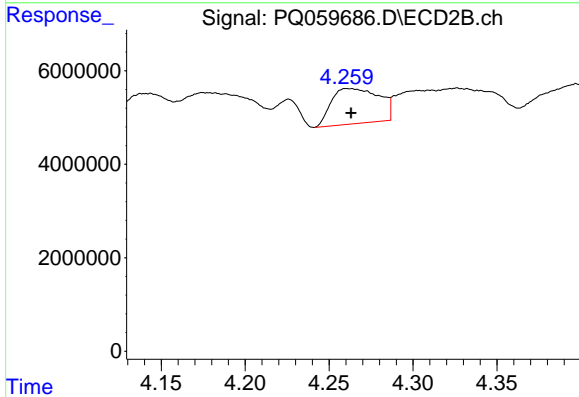
R.T.: 4.052 min
 Delta R.T.: -0.014 min
 Response: 7141309
 Conc: 41.77 ng/ml



#7 AR-1016-5

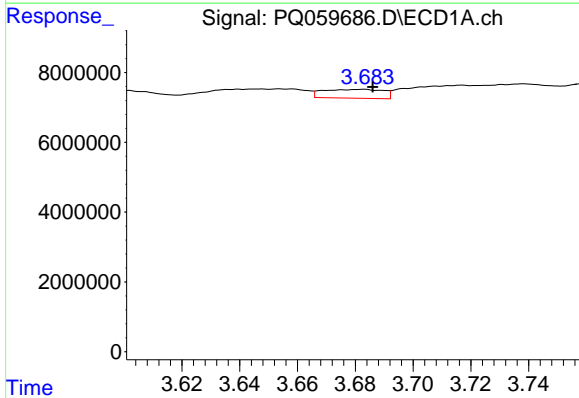
R.T.: 5.038 min
 Delta R.T.: -0.002 min
 Response: 71279430
 Conc: 227.23 ng/ml

Instrument :
 ECD_Q
 ClientSampleId :



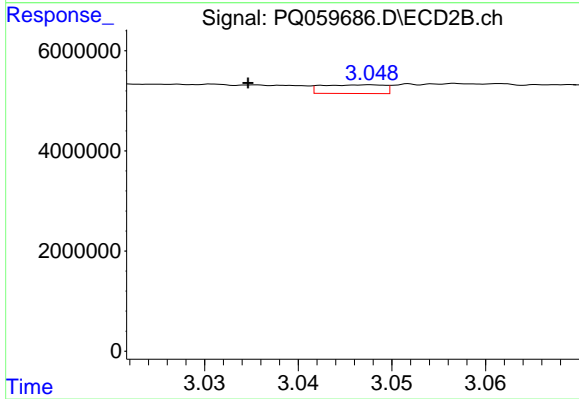
#7 AR-1016-5

R.T.: 4.260 min
 Delta R.T.: -0.003 min
 Response: 14881298
 Conc: 66.05 ng/ml



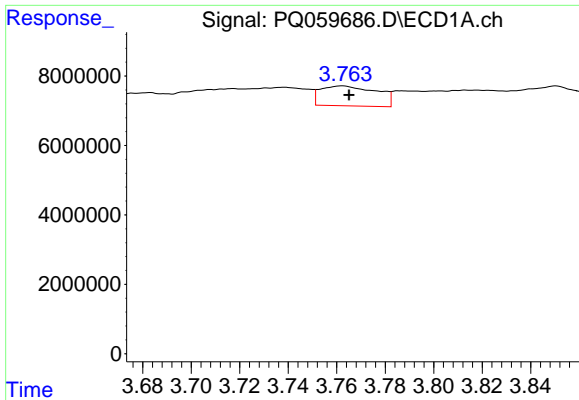
#8 AR-1221-1

R.T.: 3.683 min
 Delta R.T.: -0.003 min
 Response: 3658536
 Conc: 24.73 ng/ml



#8 AR-1221-1

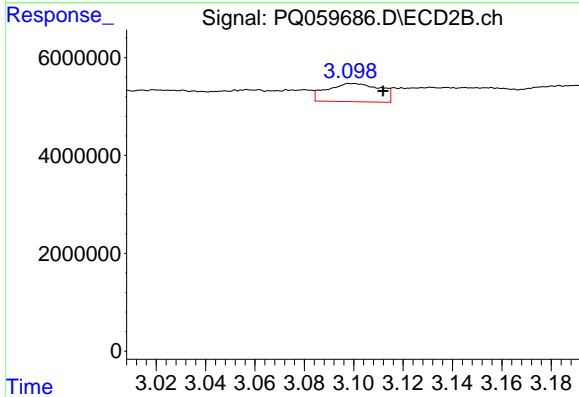
R.T.: 3.048 min
 Delta R.T.: 0.013 min
 Response: 806449
 Conc: 8.12 ng/ml



#9 AR-1221-2

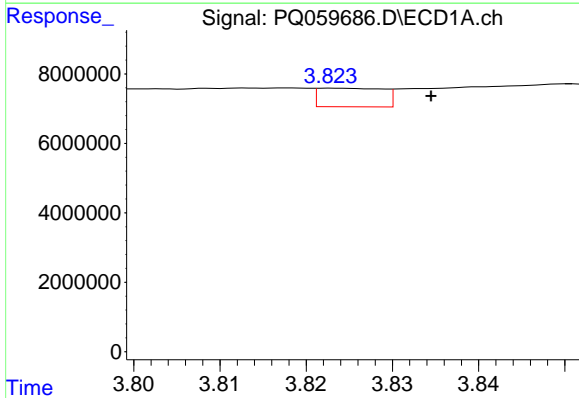
R.T.: 3.763 min
 Delta R.T.: -0.003 min
 Response: 9251534
 Conc: 89.39 ng/ml

Instrument :
 ECD_Q
 ClientSampleId :



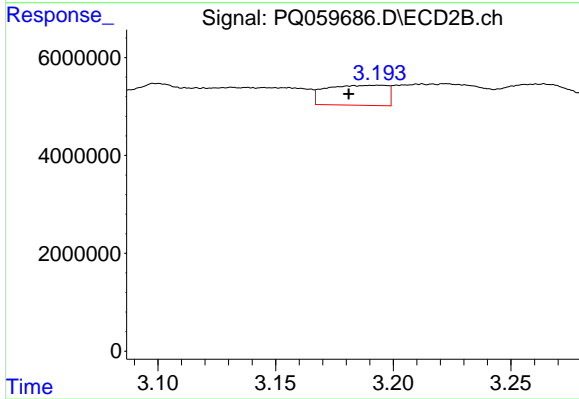
#9 AR-1221-2

R.T.: 3.098 min
 Delta R.T.: -0.013 min
 Response: 5568111
 Conc: 81.35 ng/ml



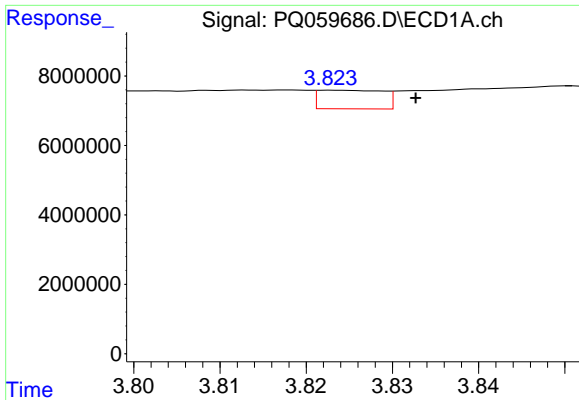
#10 AR-1221-3

R.T.: 3.823 min
 Delta R.T.: -0.012 min
 Response: 2804356
 Conc: 8.42 ng/ml



#10 AR-1221-3

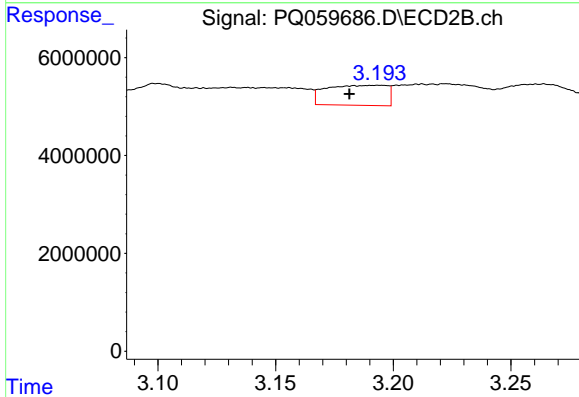
R.T.: 3.194 min
 Delta R.T.: 0.013 min
 Response: 7351649
 Conc: 32.06 ng/ml



#11 AR-1232-1

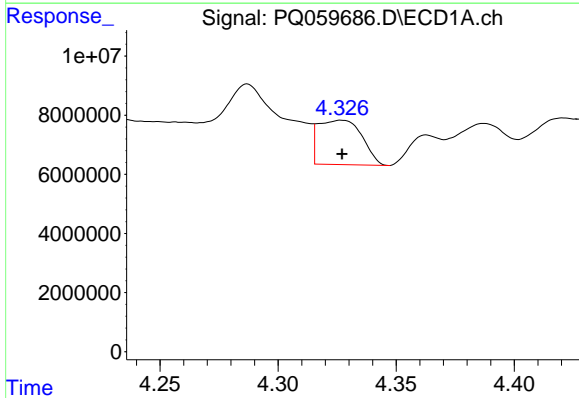
R.T.: 3.823 min
 Delta R.T.: -0.010 min
 Response: 2804356
 Conc: 9.96 ng/ml

Instrument :
 ECD_Q
 ClientSampleId :



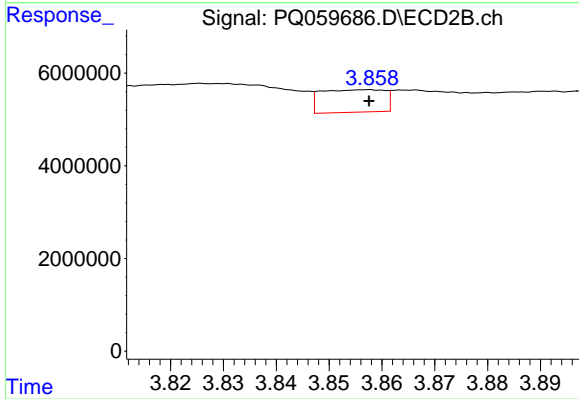
#11 AR-1232-1

R.T.: 3.194 min
 Delta R.T.: 0.012 min
 Response: 7351649
 Conc: 38.18 ng/ml



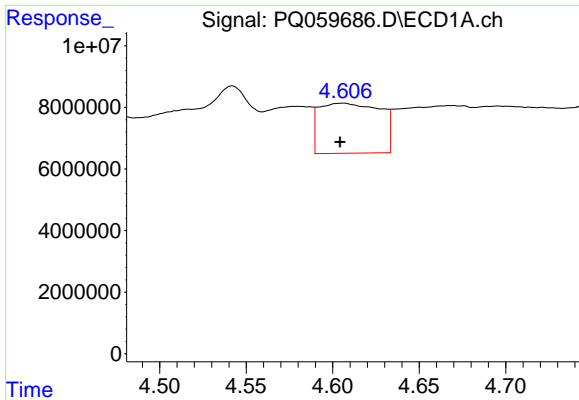
#12 AR-1232-2

R.T.: 4.327 min
 Delta R.T.: 0.000 min
 Response: 19374514
 Conc: 131.88 ng/ml



#12 AR-1232-2

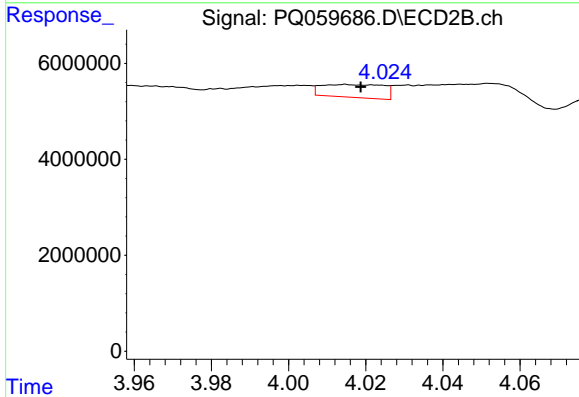
R.T.: 3.857 min
 Delta R.T.: 0.000 min
 Response: 4069900
 Conc: 21.61 ng/ml



#13 AR-1232-3

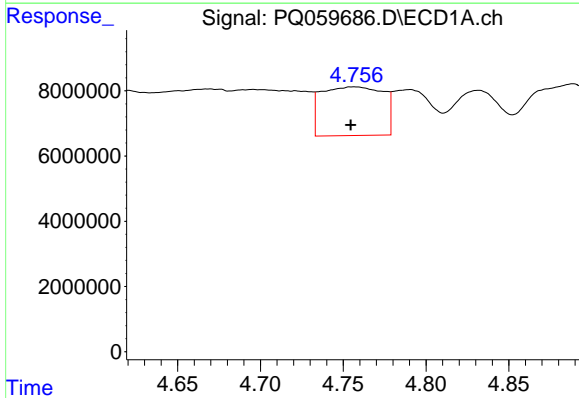
R.T.: 4.606 min
 Delta R.T.: 0.002 min
 Response: 40086482
 Conc: 140.47 ng/ml

Instrument :
 ECD_Q
 ClientSampleId :



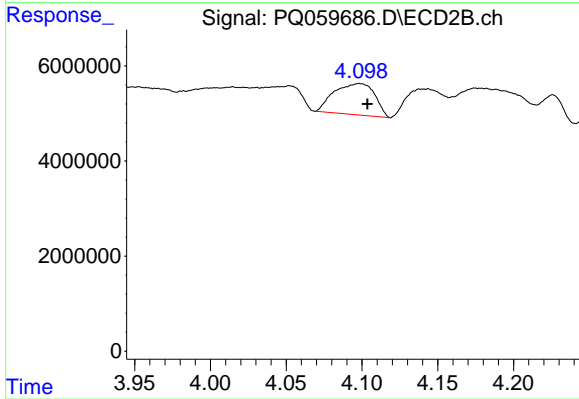
#13 AR-1232-3

R.T.: 4.015 min
 Delta R.T.: -0.004 min
 Response: 3005686
 Conc: 30.82 ng/ml



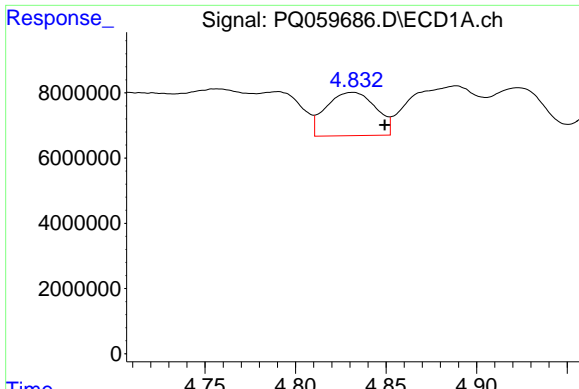
#14 AR-1232-4

R.T.: 4.757 min
 Delta R.T.: 0.002 min
 Response: 38742986
 Conc: 258.95 ng/ml



#14 AR-1232-4

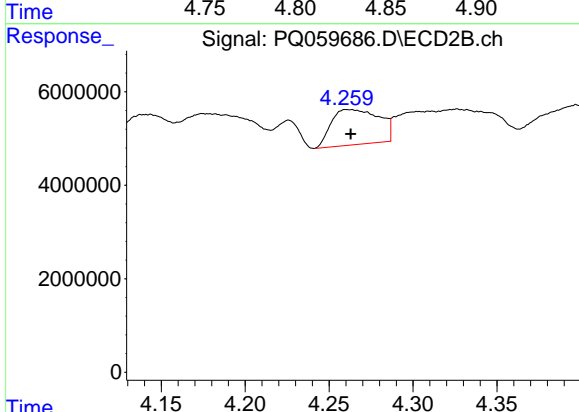
R.T.: 4.098 min
 Delta R.T.: -0.005 min
 Response: 12231243
 Conc: 149.83 ng/ml



#15 AR-1232-5

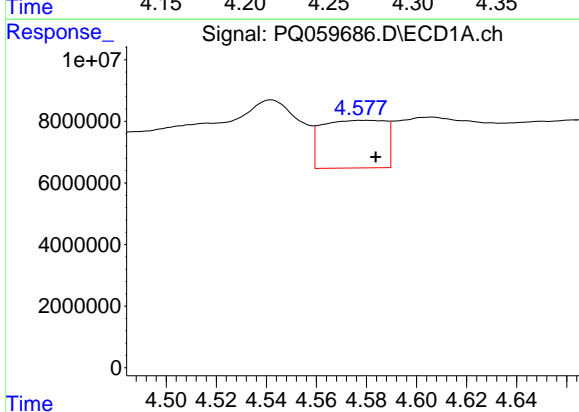
R.T.: 4.832 min
 Delta R.T.: -0.017 min
 Response: 25284110
 Conc: 240.89 ng/ml

Instrument :
 ECD_Q
 ClientSampleId :



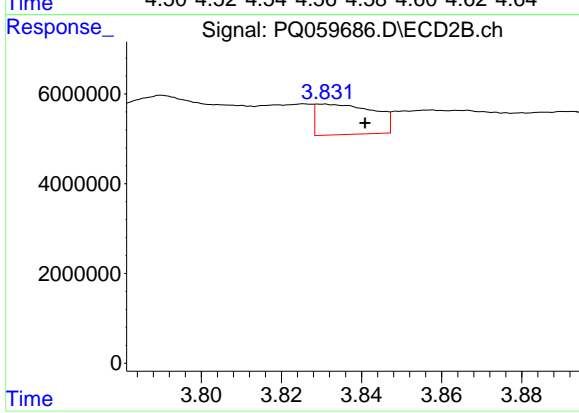
#15 AR-1232-5

R.T.: 4.260 min
 Delta R.T.: -0.003 min
 Response: 14881298
 Conc: 155.85 ng/ml



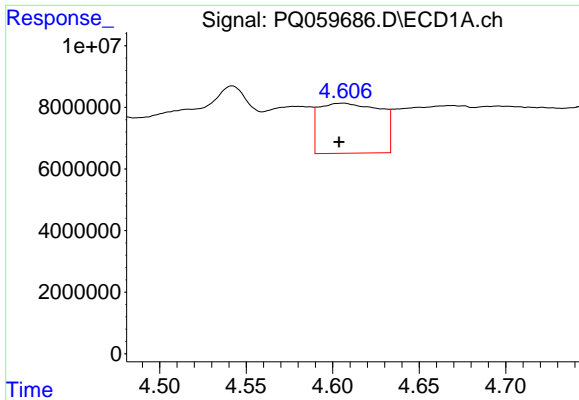
#16 AR-1242-1

R.T.: 4.578 min
 Delta R.T.: -0.006 min
 Response: 27319429
 Conc: 78.43 ng/ml



#16 AR-1242-1

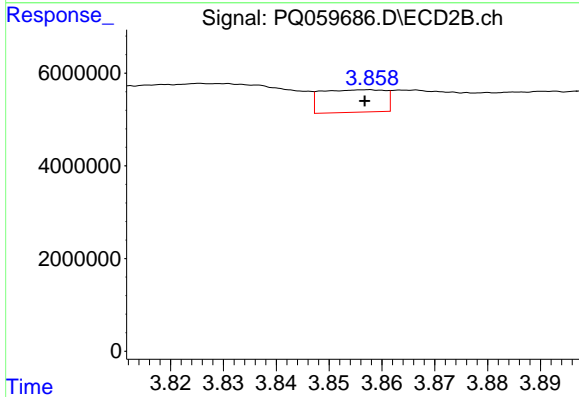
R.T.: 3.830 min
 Delta R.T.: -0.010 min
 Response: 6834658
 Conc: 29.45 ng/ml



#17 AR-1242-2

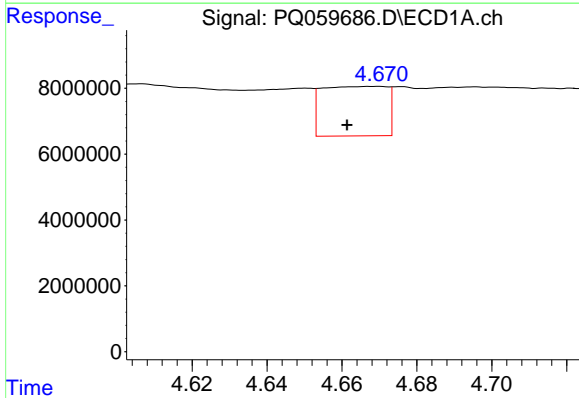
R.T.: 4.606 min
 Delta R.T.: 0.003 min
 Response: 40086482
 Conc: 78.37 ng/ml

Instrument :
 ECD_Q
 ClientSampleId :



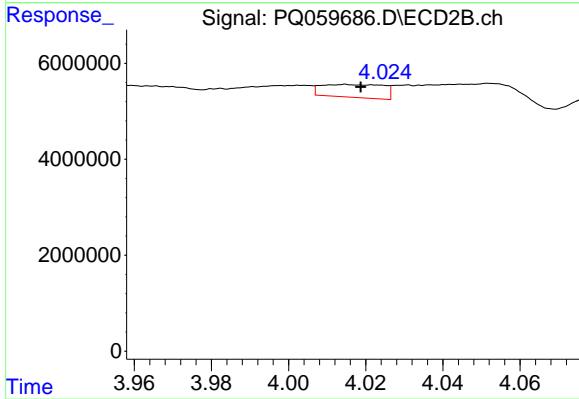
#17 AR-1242-2

R.T.: 3.857 min
 Delta R.T.: 0.000 min
 Response: 4069900
 Conc: 11.68 ng/ml



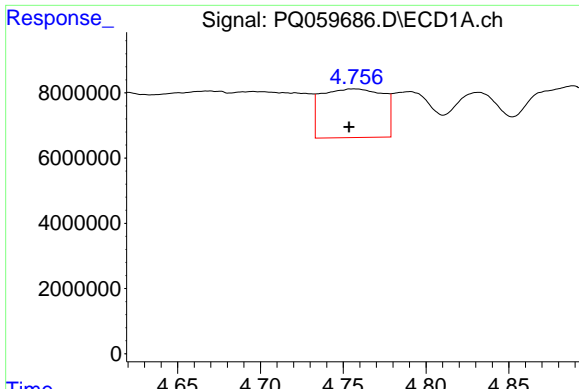
#18 AR-1242-3

R.T.: 4.670 min
 Delta R.T.: 0.009 min
 Response: 18007998
 Conc: 55.69 ng/ml



#18 AR-1242-3

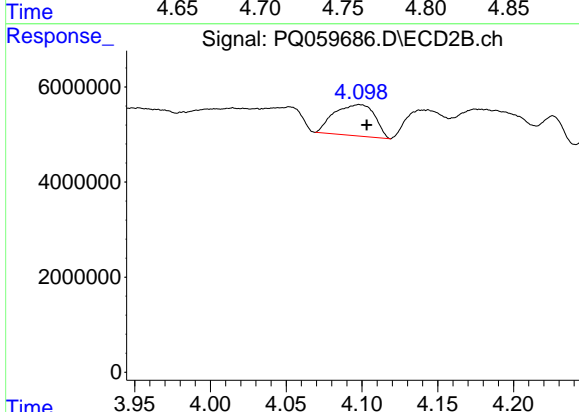
R.T.: 4.015 min
 Delta R.T.: -0.004 min
 Response: 3005686
 Conc: 16.45 ng/ml



#19 AR-1242-4

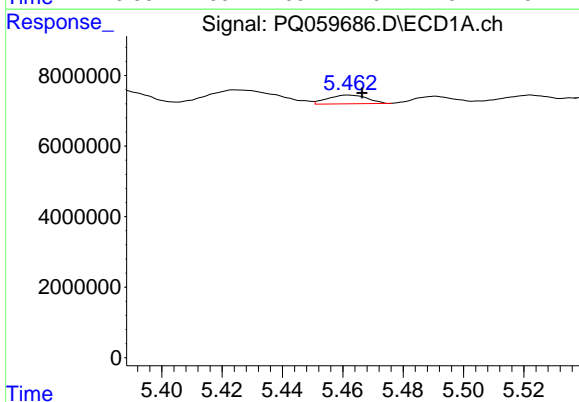
R.T.: 4.757 min
 Delta R.T.: 0.003 min
 Response: 38742986
 Conc: 143.78 ng/ml

Instrument :
 ECD_Q
 ClientSampleId :



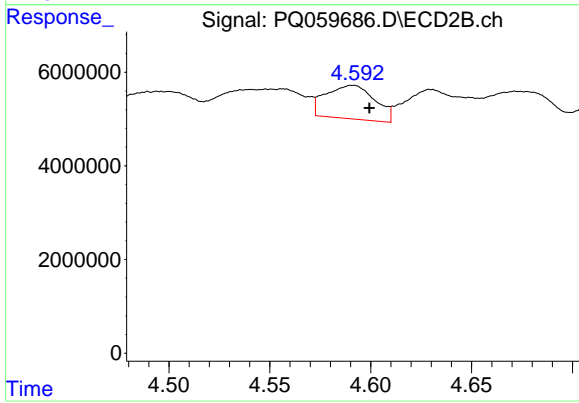
#19 AR-1242-4

R.T.: 4.098 min
 Delta R.T.: -0.005 min
 Response: 12231243
 Conc: 72.51 ng/ml



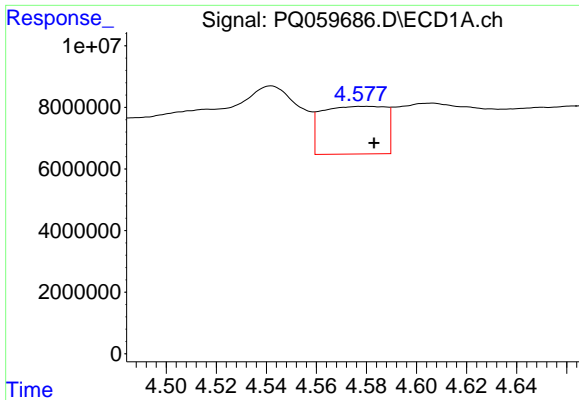
#20 AR-1242-5

R.T.: 5.462 min
 Delta R.T.: -0.004 min
 Response: 2255568
 Conc: 8.39 ng/ml



#20 AR-1242-5

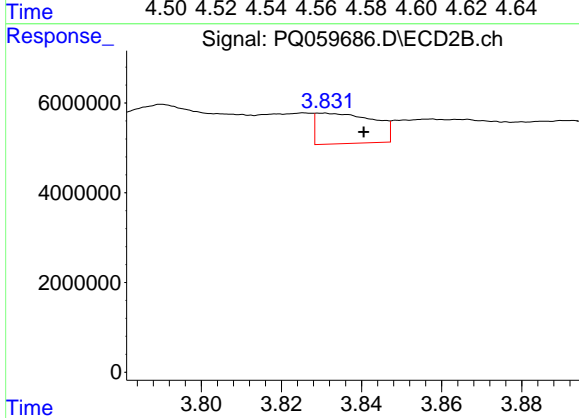
R.T.: 4.591 min
 Delta R.T.: -0.009 min
 Response: 12100942
 Conc: 54.70 ng/ml



#21 AR-1248-1

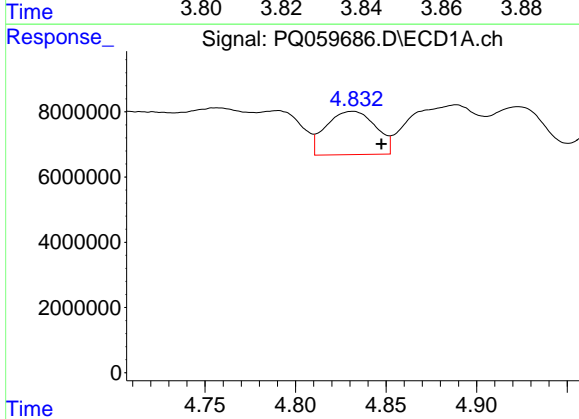
R.T.: 4.578 min
 Delta R.T.: -0.006 min
 Response: 27319429
 Conc: 103.00 ng/ml

Instrument :
 ECD_Q
 ClientSampleId :



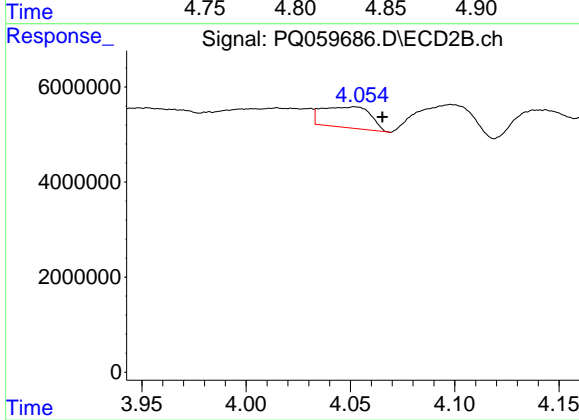
#21 AR-1248-1

R.T.: 3.830 min
 Delta R.T.: -0.010 min
 Response: 6834658
 Conc: 38.44 ng/ml



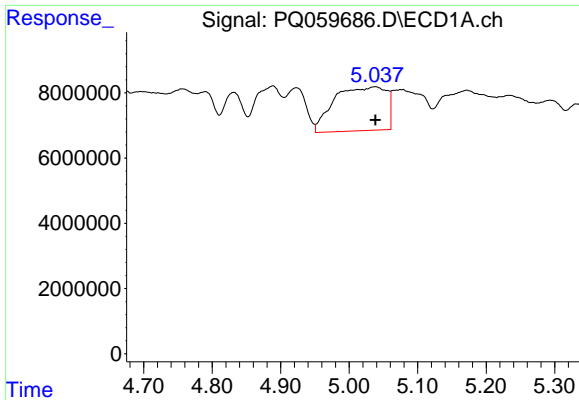
#22 AR-1248-2

R.T.: 4.832 min
 Delta R.T.: -0.015 min
 Response: 25284110
 Conc: 70.92 ng/ml



#22 AR-1248-2

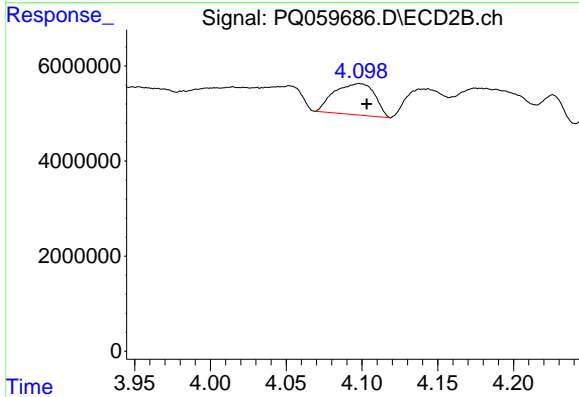
R.T.: 4.052 min
 Delta R.T.: -0.013 min
 Response: 7141309
 Conc: 28.29 ng/ml



#23 AR-1248-3

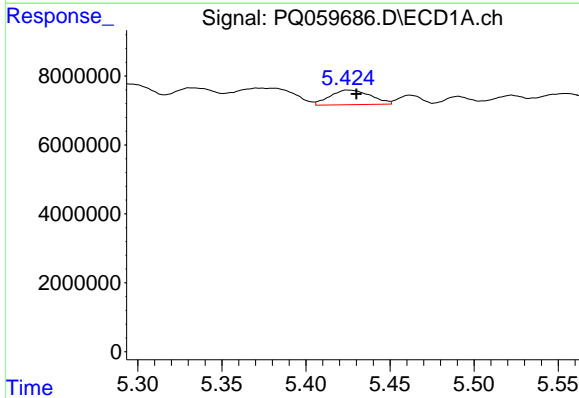
R.T.: 5.038 min
 Delta R.T.: 0.000 min
 Response: 71279430
 Conc: 165.97 ng/ml

Instrument :
 ECD_Q
 ClientSampleId :



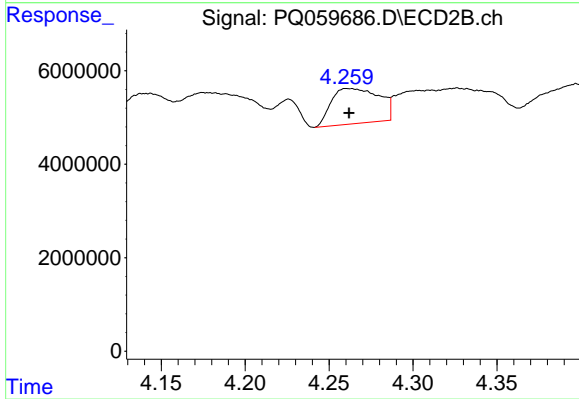
#23 AR-1248-3

R.T.: 4.098 min
 Delta R.T.: -0.005 min
 Response: 12231243
 Conc: 48.44 ng/ml



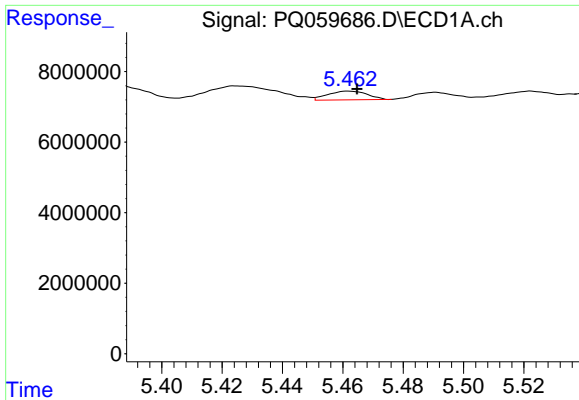
#24 AR-1248-4

R.T.: 5.425 min
 Delta R.T.: -0.005 min
 Response: 7131421
 Conc: 15.34 ng/ml



#24 AR-1248-4

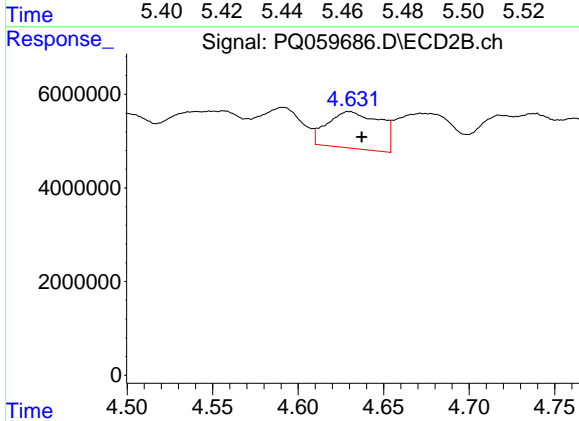
R.T.: 4.260 min
 Delta R.T.: -0.002 min
 Response: 14881298
 Conc: 47.64 ng/ml



#25 AR-1248-5

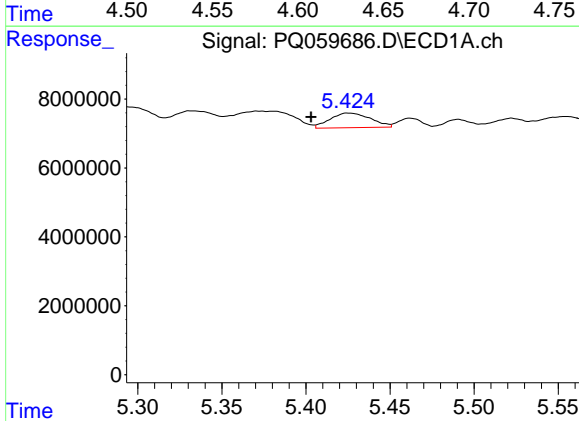
R.T.: 5.462 min
 Delta R.T.: -0.003 min
 Response: 2255568
 Conc: 4.90 ng/ml

Instrument :
 ECD_Q
 ClientSampleId :



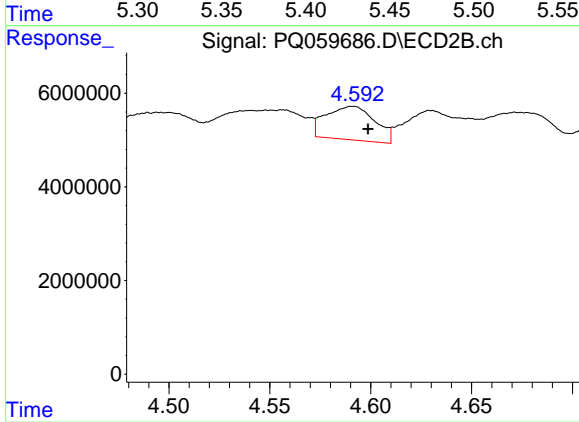
#25 AR-1248-5

R.T.: 4.629 min
 Delta R.T.: -0.008 min
 Response: 16817660
 Conc: 53.53 ng/ml



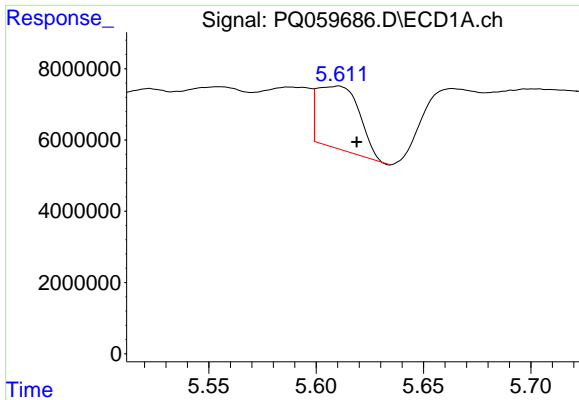
#26 AR-1254-1

R.T.: 5.425 min
 Delta R.T.: 0.022 min
 Response: 7131421
 Conc: 14.87 ng/ml



#26 AR-1254-1

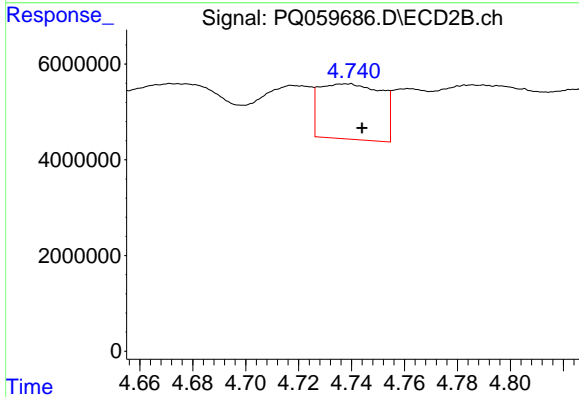
R.T.: 4.591 min
 Delta R.T.: -0.008 min
 Response: 12100942
 Conc: 24.75 ng/ml



#27 AR-1254-2

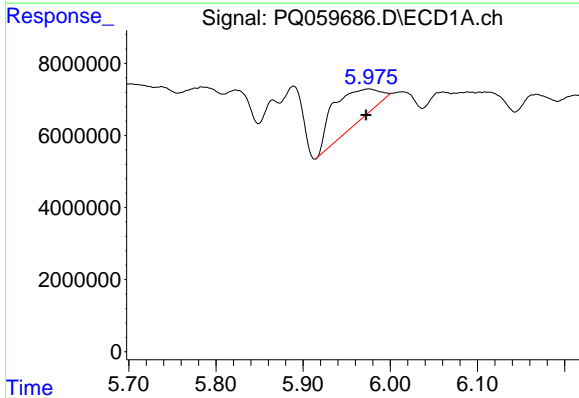
R.T.: 5.610 min
 Delta R.T.: -0.009 min
 Response: 23930287
 Conc: 32.17 ng/ml

Instrument :
 ECD_Q
 ClientSampleId :



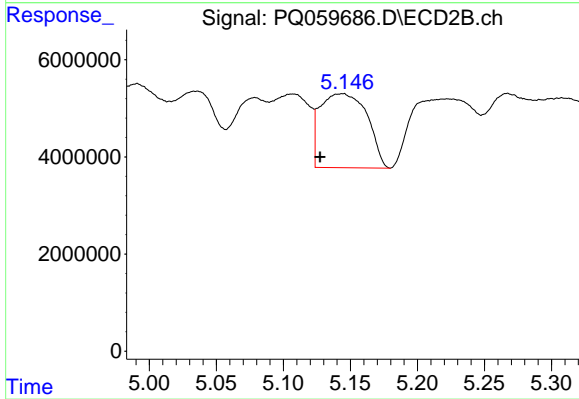
#27 AR-1254-2

R.T.: 4.740 min
 Delta R.T.: -0.004 min
 Response: 18818803
 Conc: 43.45 ng/ml



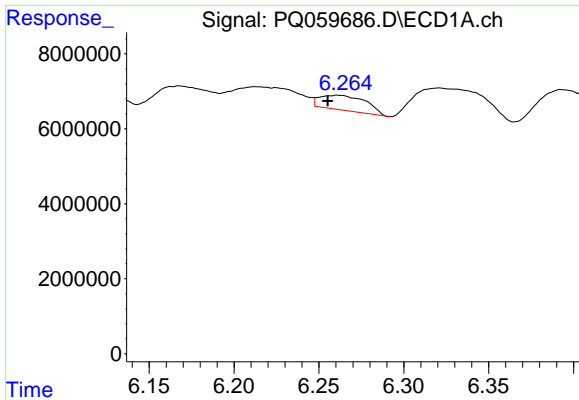
#28 AR-1254-3

R.T.: 5.975 min
 Delta R.T.: 0.003 min
 Response: 33657669
 Conc: 43.02 ng/ml



#28 AR-1254-3

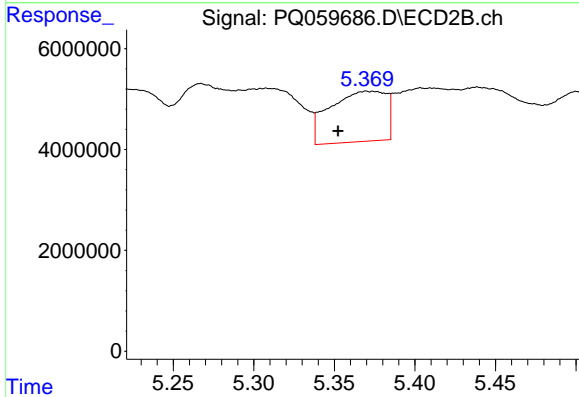
R.T.: 5.145 min
 Delta R.T.: 0.018 min
 Response: 37167099
 Conc: 53.64 ng/ml



#29 AR-1254-4

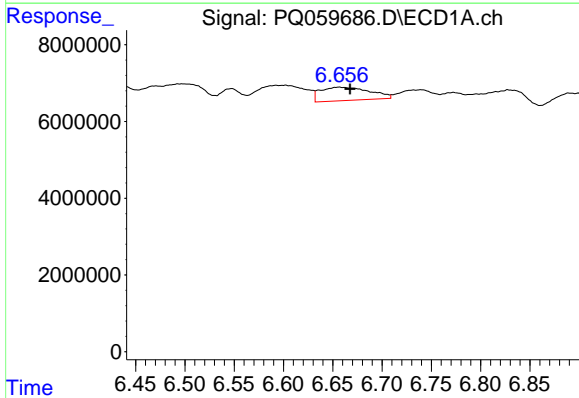
R.T.: 6.262 min
 Delta R.T.: 0.006 min
 Response: 7480542
 Conc: 13.68 ng/ml

Instrument :
 ECD_Q
 ClientSampleId :



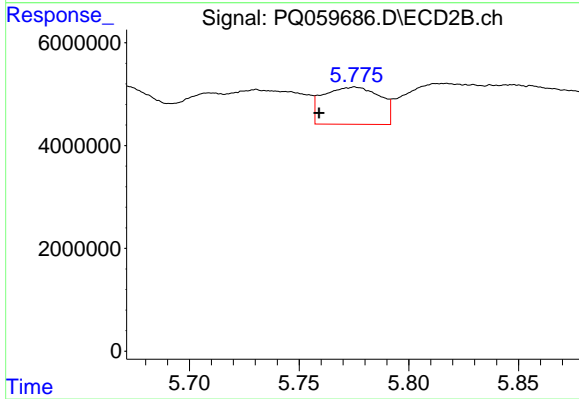
#29 AR-1254-4

R.T.: 5.370 min
 Delta R.T.: 0.017 min
 Response: 24233383
 Conc: 56.29 ng/ml



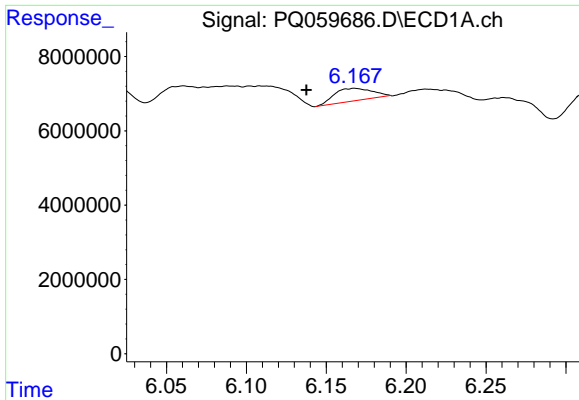
#30 AR-1254-5

R.T.: 6.656 min
 Delta R.T.: -0.011 min
 Response: 12121986
 Conc: 20.45 ng/ml



#30 AR-1254-5

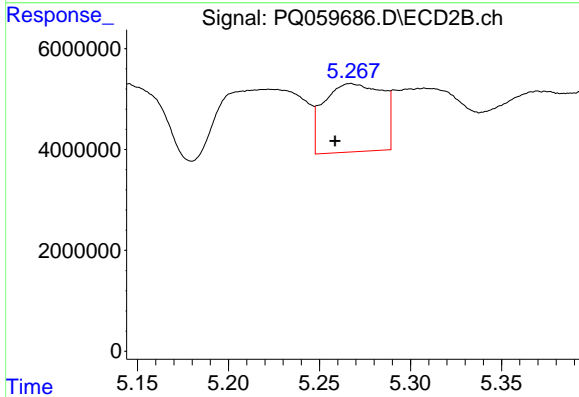
R.T.: 5.775 min
 Delta R.T.: 0.016 min
 Response: 13012067
 Conc: 21.02 ng/ml



#31 AR-1260-1

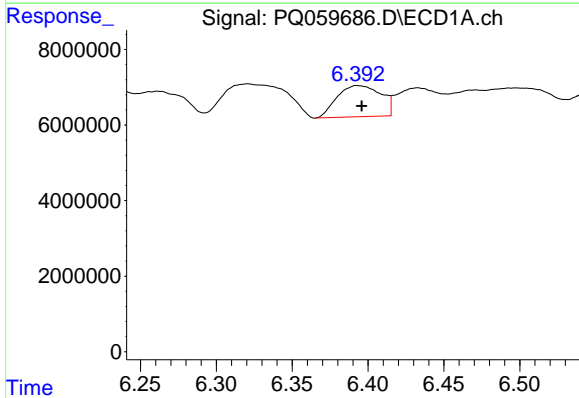
R.T.: 6.168 min
 Delta R.T.: 0.030 min
 Response: 5395229
 Conc: 9.70 ng/ml

Instrument :
 ECD_Q
 ClientSampleId :



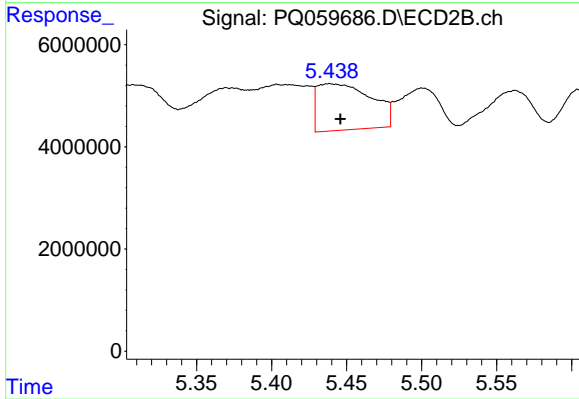
#31 AR-1260-1

R.T.: 5.267 min
 Delta R.T.: 0.009 min
 Response: 30134068
 Conc: 66.88 ng/ml



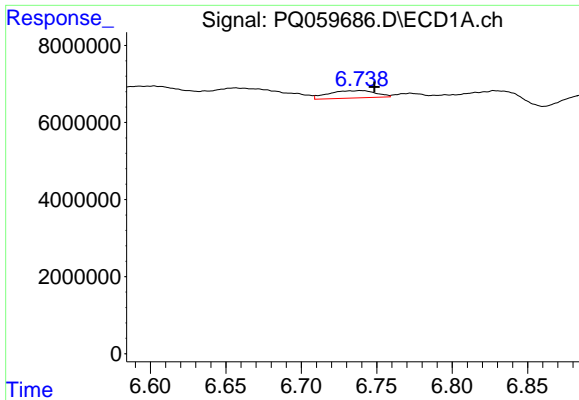
#32 AR-1260-2

R.T.: 6.393 min
 Delta R.T.: -0.003 min
 Response: 16628024
 Conc: 26.05 ng/ml



#32 AR-1260-2

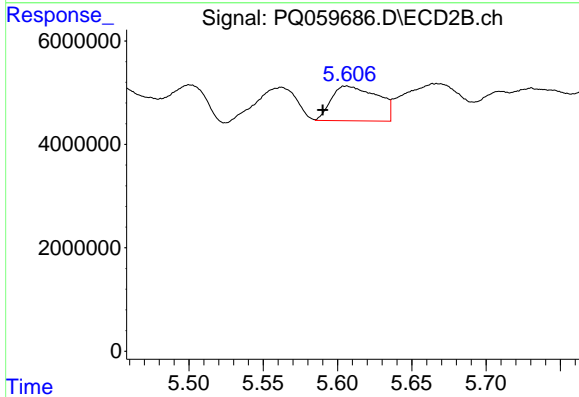
R.T.: 5.439 min
 Delta R.T.: -0.007 min
 Response: 22807509
 Conc: 41.47 ng/ml



#33 AR-1260-3

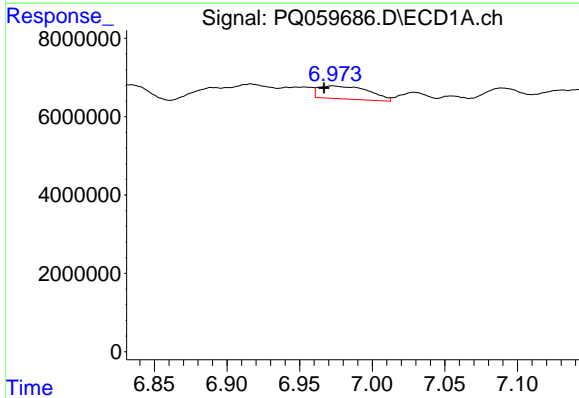
R.T.: 6.740 min
 Delta R.T.: -0.009 min
 Response: 4158269
 Conc: 9.30 ng/ml

Instrument :
 ECD_Q
 ClientSampleId :



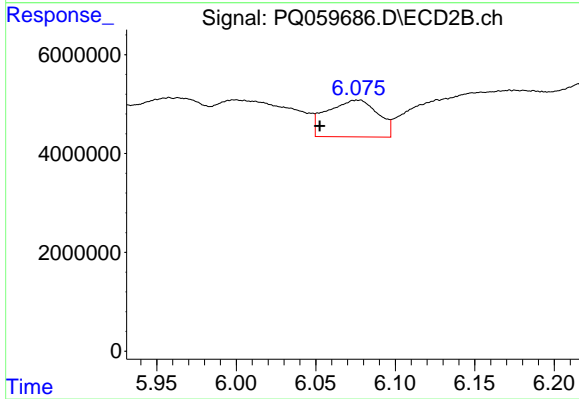
#33 AR-1260-3

R.T.: 5.606 min
 Delta R.T.: 0.016 min
 Response: 14496673
 Conc: 27.94 ng/ml



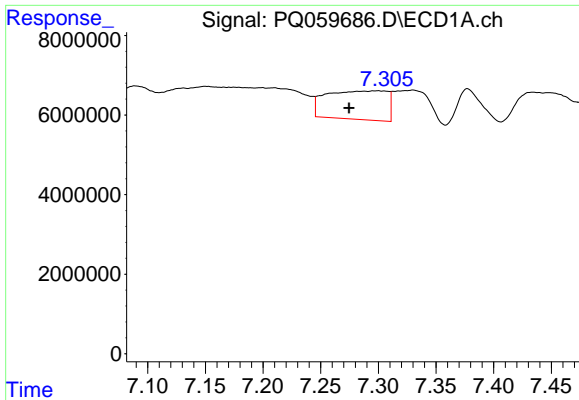
#34 AR-1260-4

R.T.: 6.973 min
 Delta R.T.: 0.006 min
 Response: 7864399
 Conc: 16.31 ng/ml



#34 AR-1260-4

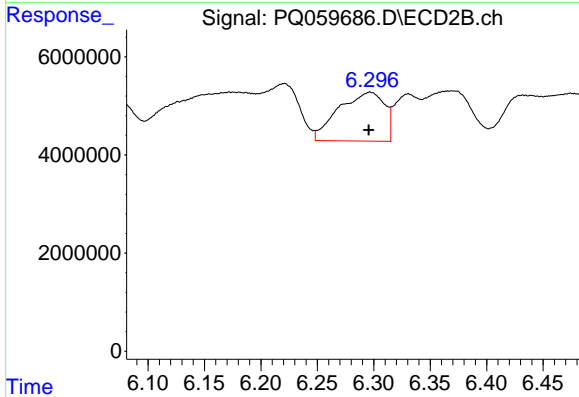
R.T.: 6.078 min
 Delta R.T.: 0.026 min
 Response: 16459983
 Conc: 37.24 ng/ml



#35 AR-1260-5

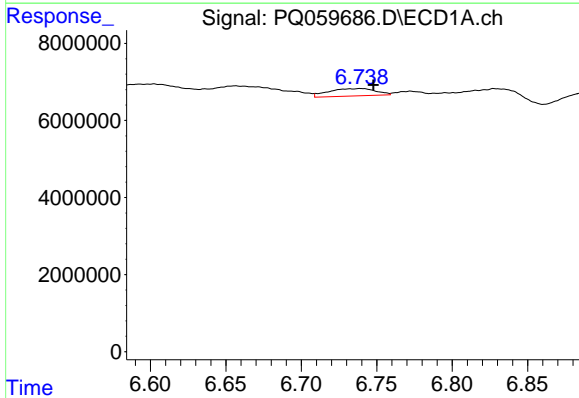
R.T.: 7.299 min
 Delta R.T.: 0.024 min
 Response: 26457225
 Conc: 30.01 ng/ml

Instrument :
 ECD_Q
 ClientSampleId :



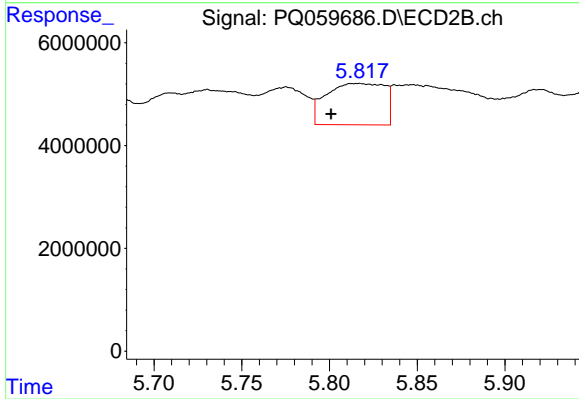
#35 AR-1260-5

R.T.: 6.297 min
 Delta R.T.: 0.001 min
 Response: 28188261
 Conc: 27.64 ng/ml



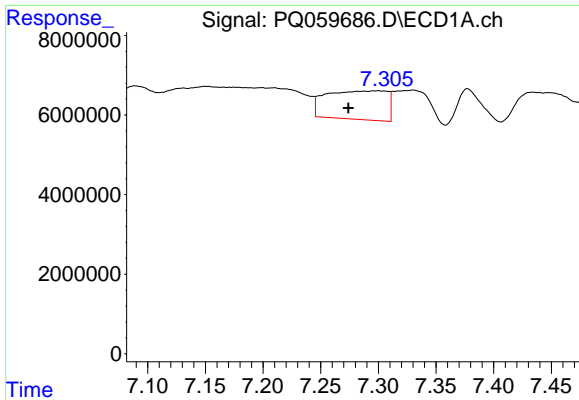
#36 AR-1262-1

R.T.: 6.740 min
 Delta R.T.: -0.008 min
 Response: 4158269
 Conc: 5.98 ng/ml



#36 AR-1262-1

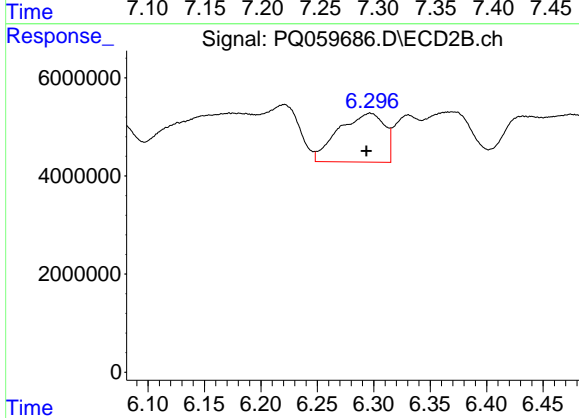
R.T.: 5.817 min
 Delta R.T.: 0.016 min
 Response: 18636998
 Conc: 29.25 ng/ml



#37 AR-1262-2

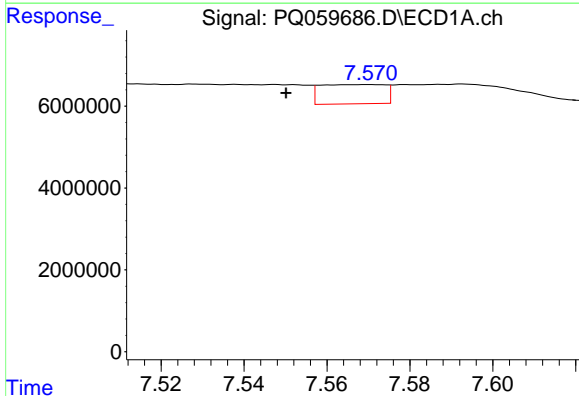
R.T.: 7.299 min
 Delta R.T.: 0.025 min
 Response: 26457225
 Conc: 24.34 ng/ml

Instrument :
 ECD_Q
 ClientSampleId :



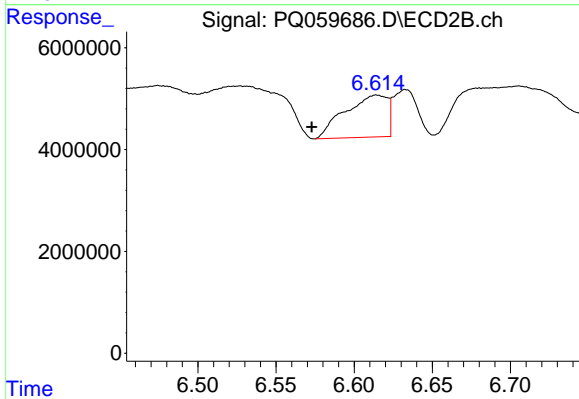
#37 AR-1262-2

R.T.: 6.297 min
 Delta R.T.: 0.003 min
 Response: 28188261
 Conc: 24.10 ng/ml



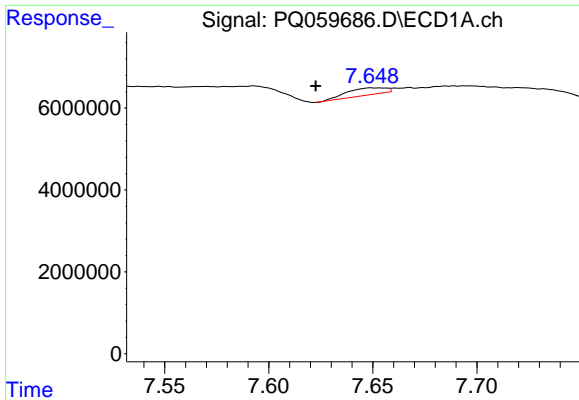
#38 AR-1262-3

R.T.: 7.570 min
 Delta R.T.: 0.020 min
 Response: 5113109
 Conc: 7.69 ng/ml



#38 AR-1262-3

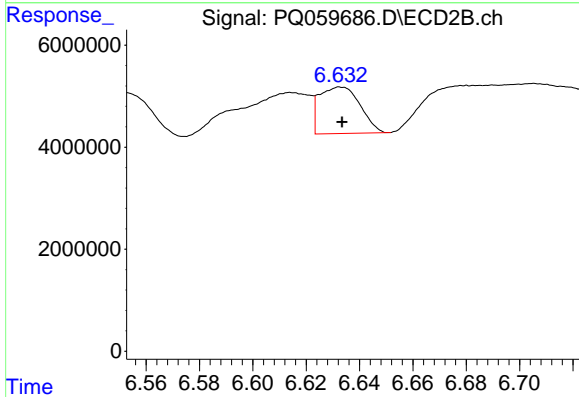
R.T.: 6.614 min
 Delta R.T.: 0.042 min
 Response: 15581579
 Conc: 33.84 ng/ml



#39 AR-1262-4

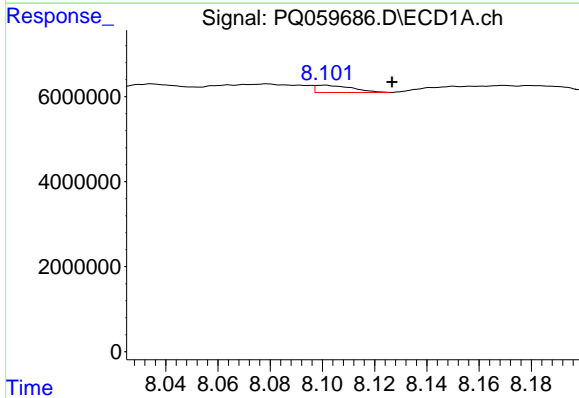
R.T.: 7.649 min
 Delta R.T.: 0.027 min
 Response: 2245041
 Conc: 7.14 ng/ml

Instrument :
 ECD_Q
 ClientSampleId :



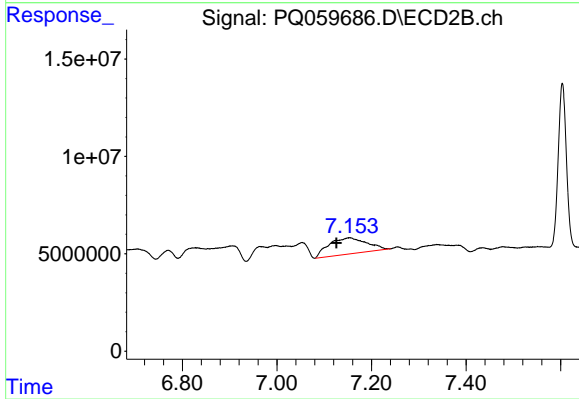
#39 AR-1262-4

R.T.: 6.633 min
 Delta R.T.: 0.000 min
 Response: 9686799
 Conc: 11.05 ng/ml



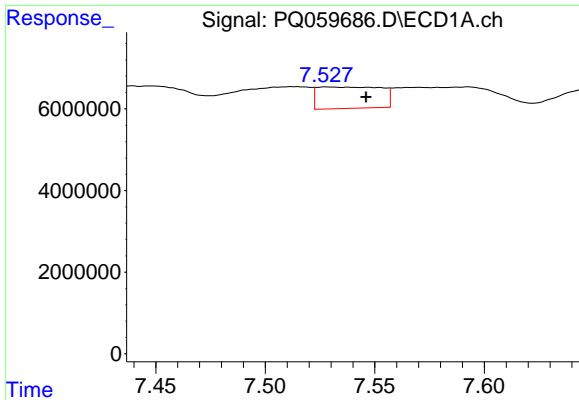
#40 AR-1262-5

R.T.: 8.100 min
 Delta R.T.: -0.026 min
 Response: 1657148
 Conc: 5.81 ng/ml



#40 AR-1262-5

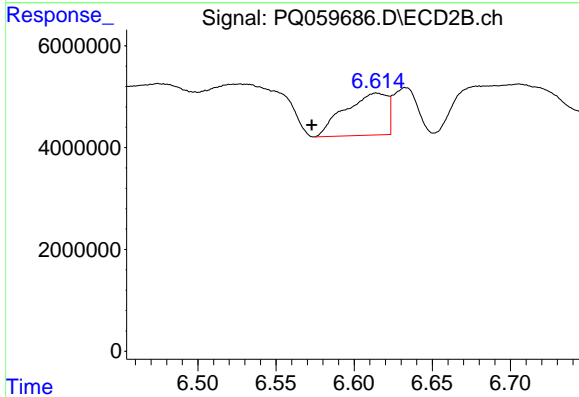
R.T.: 7.154 min
 Delta R.T.: 0.028 min
 Response: 46354199
 Conc: 116.66 ng/ml



#41 AR-1268-1

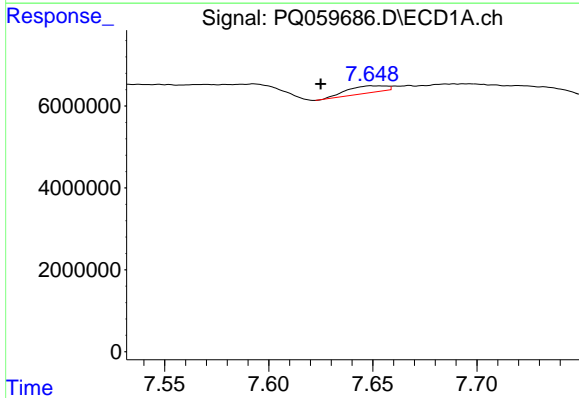
R.T.: 7.528 min
 Delta R.T.: -0.018 min
 Response: 10597970
 Conc: 9.07 ng/ml

Instrument :
 ECD_Q
 ClientSampleId :



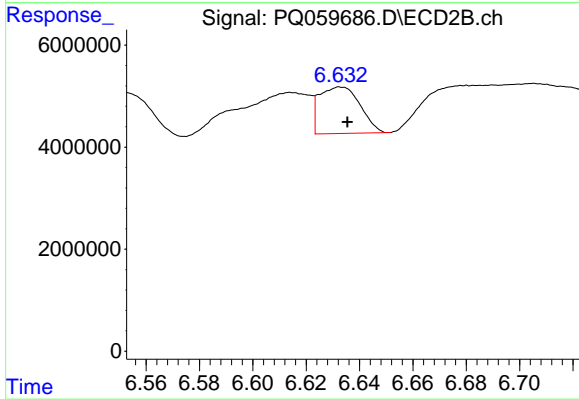
#41 AR-1268-1

R.T.: 6.614 min
 Delta R.T.: 0.042 min
 Response: 15581579
 Conc: 11.08 ng/ml



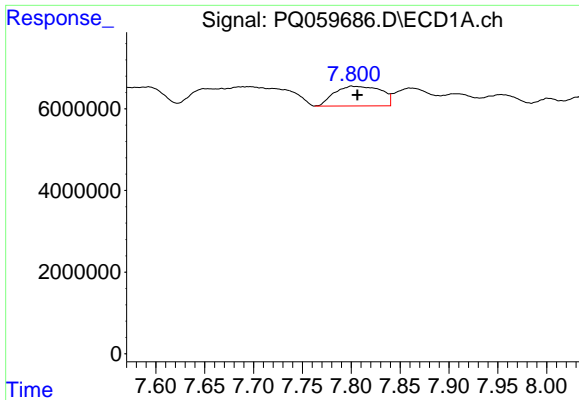
#42 AR-1268-2

R.T.: 7.649 min
 Delta R.T.: 0.025 min
 Response: 2245041
 Conc: 2.15 ng/ml



#42 AR-1268-2

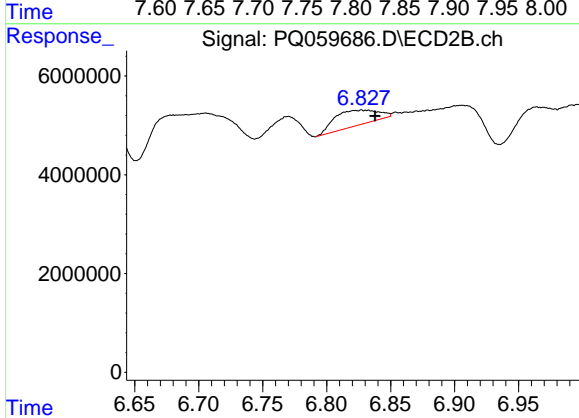
R.T.: 6.633 min
 Delta R.T.: -0.002 min
 Response: 9686799
 Conc: 7.49 ng/ml



#43 AR-1268-3

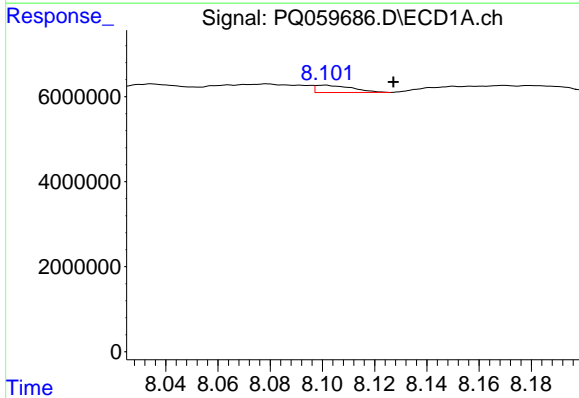
R.T.: 7.800 min
 Delta R.T.: -0.006 min
 Response: 16062385
 Conc: 19.11 ng/ml

Instrument :
 ECD_Q
 ClientSampleId :



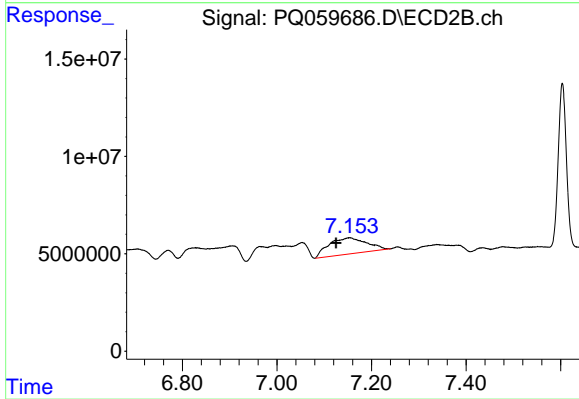
#43 AR-1268-3

R.T.: 6.828 min
 Delta R.T.: -0.010 min
 Response: 7300545
 Conc: 6.61 ng/ml



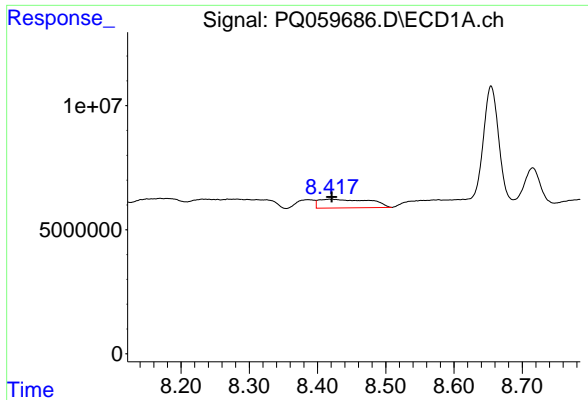
#44 AR-1268-4

R.T.: 8.100 min
 Delta R.T.: -0.027 min
 Response: 1657148
 Conc: 5.13 ng/ml



#44 AR-1268-4

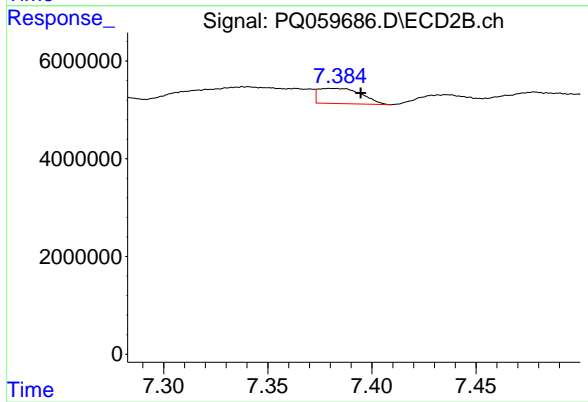
R.T.: 7.154 min
 Delta R.T.: 0.029 min
 Response: 46354199
 Conc: 102.34 ng/ml



#45 AR-1268-5

R.T.: 8.421 min
 Delta R.T.: 0.000 min
 Response: 18108645
 Conc: 8.04 ng/ml

Instrument :
 ECD_Q
 ClientSampleId :



#45 AR-1268-5

R.T.: 7.380 min
 Delta R.T.: -0.015 min
 Response: 4438456
 Conc: 1.24 ng/ml